

# THE TRIANGLE

of MU PHI EPSILON



## The Business of Music

Music as Art and Career

Spotlight on Joyce Castle

Get Ready for Convention 2008





# President's Message

*Tell me, I'll forget.  
Show me, I may remember.  
Involve me, I'll understand.*  
Chinese Proverb

Musicians are a prime example of this proverb. When we are involved in performance we begin to understand the intellectual process of the composer as well as the emotional impact of the composition – the cognitive and the affective. This same result can be transferred to our Fraternity involvement.

The 2008 Convention in Jacksonville, Florida is approaching. Our loyal alumni understand the meaning of Music, Friendship and Harmony because they have been involved in previous conventions. Even if they have not attended, alumni members have been involved in decisions at their local chapter level and then sent delegates to express their opinions and vote on important fraternity business. Those Mu Phis who have attended a convention know what a very special event it is, because they have experienced the outstanding performances and networking with other professionals. Without a doubt, involvement in a convention results in greater understanding of this wonderful organization known as Mu Phi Epsilon.

Collegiate members now have their first opportunity to be involved in a convention. It will be four days of nonstop exciting involvement with *Artistry and Action*. We encourage as many collegiates as possible to attend and understand the many sides of professional music.

Our most exciting news is that internationally acclaimed soprano Christine Brewer will give a master class, sing, and tell about her career. She is the epitome of *Artistry and Action*. Continuing with our focus on careers in music, there will be panelists talking about their work in music therapy, business, arts management, and publishing. And our 2007 International Competition winner, cellist Ruslan Biryukov, will give a most impressive performance.

Convention packets have been sent to each chapter president and information is available from the fraternity website ([www.muphiepsilon.org](http://www.muphiepsilon.org)). Updates of presentations will be posted and emailed as they become confirmed.

Become involved, and attend our wonderful convention!



With Mu Phi Love,

*Fran Irwin*

Fran Irwin  
International President

## EDITOR

Melissa Eddy  
editor@muphiepsilon.org

## DESIGN & PRODUCTION

Corinne Lattimer  
thetriangle@muphiepsilon.org

## ADVERTISING

Jan Scott, 314-997-6262  
advertise@muphiepsilon.org

## CONTRIBUTORS

**ACME** Carolyn Hoover

**BOOKSHELF** Rona Commins

**FINAL NOTES** Wynona Lipsett

**INTERNATIONAL CORNER** Doris Braun

**INTERVIEWS** Marcus Wyche

**UPON LISTENING** Sherry Kloss

## Send all material for publication to:

Melissa Eddy, editor@muphiepsilon.org  
Fax (512) 342-0515 or by mail to:  
P.O. Box 10042, Austin, TX 78766-1042. All materials submitted for publication become the property of MuPhiEpsilon. Requests for return are accepted and must be accompanied with a self-addressed stamped envelope.

## Deadlines for submission of articles:

Spring — January 15  
Summer — March 1  
Fall — July 15  
Winter — October 15

Change of address, renewals, notice of deceased members, requests for extra copies and subscription requests should be sent to:

Mu Phi Epsilon  
International Executive Office  
4705 N. Sonora Ave., Ste. 114  
Fresno, CA 93722-3947  
toll free: 1 (888) 259-1471  
fax: 1 (559) 277-2825  
e-mail: executiveoffice@muphiepsilon.org

The Triangle is published 4 times per year by Mu Phi Epsilon, International Professional Music Fraternity. Subscription price is \$20.00 per year. Single copies are \$8.00. Periodicals postage paid at Fresno, California and at additional mailing offices. Printed in the United States of America.

Member, Professional Fraternity Association.  
(ISSN 0041-2600) (Volume 101, Issue 4)

POSTMASTER: Send all changes of address to:  
Mu Phi Epsilon International Executive Office  
4705 N. Sonora Avenue, Ste. 114,  
Fresno, CA 93722-3947

## Features

- 4 Member Profile — Joyce Castle
- 6 Convention 2008
- 10 Music Business Education: A Student Perspective
- 13 Julia Scherer: Passion for Pianos and People



Photo Credit:  
Carol Rosegg

## Departments

- 7 Bookshelf
- 8 International Corner
- 12 Upon Listening
- 14 ACME — Artists, Composers, Musicologists and Educators
- 15 District-Chapter Directory
- 16 Applause & Encore
- 18 Final Notes
- 20 Collegiate Presidents
- 22 District Directors
- 23 International Executive Board & Foundation Board

## Fraternity Mission Statement

Mu Phi Epsilon International Professional Music Fraternity is a coeducational fraternity whose aim is the advancement of music in the community, nation, and world through the promotion of musicianship, scholarship, and music education, with emphasis on service through music.

# SPOTLIGHT ON JOYCE CASTLE

Interview by Marcus Wyche  
Delta Delta, Washington, D.C. Alumna

**O** *rpheus in the Underworld, Peter Grimes, Candide, Salome, Boris Godunov, HMS Pinafore, Der Rosenkavalier, The Medium, Rusalka, Die Fledermaus, Pirates of Penzance, Eugene Onegin, Die Walküre, Sweeney Todd, The Consul, The Rake's Progress, Gianni Schicchi, Le Nozze di Figaro*—this veritable Who's Who of opera and musical theater titles comprise just a small portion of mezzo-soprano Joyce Castle's musical credits and accomplishments.

An extraordinarily versatile singer with an expansive repertoire of 132 roles, Ms. Castle, Xi, is recognized internationally in classical and contemporary opera for her "richly nuanced voice, profound dramatic skills, and a superb sense of musicianship." Praised by *Opera Quarterly, Variety.com, Village Voice, New York Times, Seattle Times, Columbus Dispatch, and Washington Post* (to name a few), she recently finished a successful run with the New York City Opera, performing the role of Mme. De la Haltière in Massenet's *Cendrillon*. In December 2006, she performed a faculty recital at the University of Kansas (where she is Professor of Voice) titled *A Short History of a Long Career on the Stage – Part Two!* Recently added to her impressive discography is the new compact disc *Flesh & Stone: Songs of Jake Heggie*, where she is featured on a song cycle entitled "Statuesque," commissioned by Kansas University for her. And she will be keeping busy with future performing commitments in Seattle, Miami, Utah, and elsewhere that will take her at least to 2010, a year that will mark forty years as a professional singer.

## Small-Town Girl

Not bad for a girl living in a small town in Louisiana. But then, maybe, no one should have been surprised, given her earliest public experience: "My mother says I sang first at the age of three," Ms. Castle says. "She accompanied me in our little church. She said I was just wonderful," she continues, laughing, "but what else is a mother to say?"

Her career path seemingly chosen, Ms. Castle followed her original ambition to go into musical theater. But as her voice developed, she realized that the highest goal she could reach for was opera. "When I was in high school I was studying voice, and I was learning opera arias, a little bit here and there, as well as lieder and musical theater. Opera came gradually, as I think it should, because it requires a lot. The voice has to be ready.

"I started with smaller roles. I certainly started in smaller theaters than the Metropolitan or the New York City Opera. But then, little by little, my voice developed and [since then] I have been finding work for a very long time."

A reader of novels and biographies who enjoys touring museums and modern visual arts, Ms. Castle—who lived in Baldwin City, Kansas, from fourth grade on—went to the University of Kansas, where a special voice and theater major was created for her and she studied with Reinhold Schmid and Miriam Green. She graduated from KU in 1961, then studied with Julius Huehn at the Eastman School of Music. After receiving her master's degree in 1966, she performed in Western Opera Theater, landed her first full-time professional job with the San Francisco Opera in 1970, then spent seven years as an American in Paris working with French theater and repertoire and performing at French National Radio. After that came performances in London and Italy, then a rise in her career upon her return to the United States when she was hired by "boss, mentor, and surrogate mother" Beverly Sills for the New York City Opera and also made her Metropolitan Opera debut.

## Musical Chameleon

Throughout Ms. Castle's career she has been a musical chameleon. Her early experience in musical theater, beginning with and expanding on smaller roles, her European experience, the particular quality and inflection of her mezzo-soprano voice, her eagerness and ability to work with contemporary composers and productions (Michael Torke's critically acclaimed *Strawberry Fields*, for example, or Dominick Argento's *Casanova*), all have marked her as a performer who excels in musical mutability. To be sure, there are signature roles—a couple that come to mind are Herodias in *Salome* and Augusta Tabor in Douglas Moore's *The Ballad of Baby Doe*—but, more often than not, as she remarked in a 2006 interview, "I'm not the girl that gets the guy. I'm every-

Photo credit: Carol Rosegg



body's mother or grandmother, or a witch, sorceress, royalty—even a man! Or a silly, weird, or diabolical woman.”

While many bemoan the current state of classical music audience participation and the arts funding (or lack thereof) in public education, Ms. Castle, while agreeing it is very important to “fight for [arts education] in the schools,” remains “ever hopeful” about music's positive impact on American culture, particularly when considering the recent resurgence of opera. In this regard, she mentions Beverly Sills with much affection:

“Beverly used supertitles for *Cendrillon* in 1983, and I believe that was the first time they were used in the United States. I think it's very important for the world of opera, for getting new audiences in. Even for [new operas in] English ...although I pride myself on having good diction, there is so much going on, [supertitles] help the audience very much and therefore help us, because it makes the opera more accessible.

“Beverly Sills was my mentor,” she continues, “and if there was a better cheerleader for the world of opera, I don't know who it would have been. Opera has sprung up in so many cities around the United States. And although it's a very expensive art form, we need help, we need those people in the seats, and we need people supporting us. We just have to support our arts because it's so very important to the nation, to the individual. It broadens us, it makes us laugh, it makes us think deeper. I believe it is possible [art can] change one's feelings, change one's viewpoint.”

Is there a role she would like to do, but hasn't? “Janáček would be so right for me,” Ms. Castle says, “but I've had to turn it down. I'd like to do *Káťa Kabanová*. I love Janáček. My father was Czech; maybe that had something to do with it.”

## An Eye to the Future

With all her commitments—in performance, teaching, and recently being appointed to the

New York City Opera Board as well as joining the Honorary Board of the Mu Phi Epsilon Foundation—how much longer can she keep up the pace? “I tell people I'm going to be singing until they get the hook,” she says. “But, actually, that's not true. I will be singing as long as I'm singing well. And I record myself a lot. So, we'll see how long I can sing. I will perform as long as I can. I want to give time for the students, too.

“I have students in the Seattle, Des Moines, and Hawaiian programs, and they're getting out to the opera companies. The University of Kansas has put performing singers in a lot of companies. That's the next group of singers; they've got to get out there and sing. And if I can facilitate that in some way, that's extremely important to me.”

What advice does she give her music students? “The basic [thing] is, you've got to love what you're doing. Because it's too hard [otherwise]. If you love the music, your voice, the process, the possibility that you can take this song or that role and bring it to an audience, then that will make you really, really get serious. It takes a lot of practice, learning languages, figuring out meters, figuring out a new score. But if it's interesting, if that's what you really want to do, then it's fun. And that's the best.

“[These days] there are a lot more singers being turned out now. But on the other hand, there are a lot more companies, too. So I think if you want to sing, you'll find a place to sing. It may not be at the Metropolitan or New York City Opera, but if it's important to a student to sing, they're going to find ways. And music is important in so many ways, in so many venues. It's so very important in the community, in churches, in clubs, in theaters across the country. I believe if they search, they will find a way to [express] their talents.” ▲



Augusta in *Baby Doe*

Photo Credit: Mark Kiriuk



Public Opinion in Offenbach's *Orpheus in the Underworld*

Photo Credit: George Mott, Courtesy of Glimmerglass Opera



Strawberry Fields

Photo Credit: George Mott, Courtesy of Glimmerglass Opera



Widow Begbick in *Aufstieg und Fall der Stadt Maha*

Photo Credit: Clive Grainger



Jezebaba in *Rusalka*

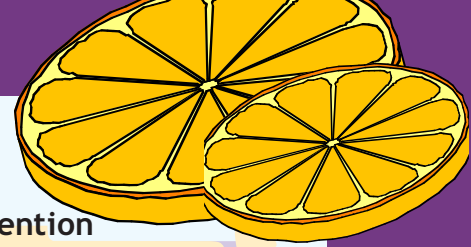
Photo Credit: Gary Smith

For more information on Joyce Castle, including an extensive biography, photos, news clips, and more, visit Janice Mayer & Associates, LLC, at [www.janicemayer.com](http://www.janicemayer.com). Interested music students can see Ms. Castle's University of Kansas profile at [www.arts.ku.edu](http://www.arts.ku.edu). Recordings of *Strawberry Fields*, *The Medium*, *The Consul*, and the Grammy-award winning *Candide* are available at the [amazon.com](http://amazon.com) and [barnesandnoble.com](http://barnesandnoble.com) websites. *Flesh & Stone: Songs of Jake Heggie* is available for purchase online by visiting the classical section of the Web store on the Broadway Cares/Equity Fights AIDS web site, [www.broadwaycares.org](http://www.broadwaycares.org), or by contacting Americus Records at (202) 237-2722. All proceeds from the CD will go to Classical Action: Performing Arts Against AIDS, a nonprofit organization that engages the performing arts community to raise funds for AIDS-related services across the United States.

# Artistry ACTION

Mu Phi Epsilon International Convention Jacksonville, FL - July 30-Aug 2, 2008

Mu Phi Epsilon 2008 Convention  
Crowne Plaza Hotel, Jacksonville, Florida  
Wednesday, July 30 - Saturday, August 2



## Artistry

### Sparkling performances!

- Internationally renowned soprano **Christine Brewer** (2005 Sterling Patron)
- MPE International Competition Winners:  
**Ruslan Biryukov** (*Mu Nu*), cello (2007)  
**Jorge Ávila** (*Omega Omega*), violin (2001)
- Soprano **Arietha Lockhart** (*Beta Gamma*, ACME)
- The **Ritz Singers** - Jacksonville's best young vocal talent
- Our own stellar **Music Delegates**

## Action

### Information and Inspiration!

- **Workshops and presentations** on music business, arts management, music therapy, recording, music education approaches, world music, collegiate-alumni relations, competition preparation, and more.
- Vocal **master class** with soprano **Christine Brewer** (participants selected by competitive application; class observation open to all).

## Location

Beautiful, newly renovated hotel overlooking Jacksonville's scenic riverfront - just minutes from skyway, downtown, shopping, nightlife, and museums.

## Registration

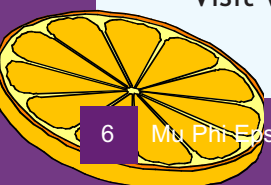
Complete convention packets, including registration forms, have been mailed to all chapter presidents and district directors.

Contact your local officer. OR

Contact the International Executive Office - 1-888-259-1471, OR

Visit [www.muphiepsilon.org/convention2008.htm](http://www.muphiepsilon.org/convention2008.htm) for convention information.

*Programs and artists subject to change.*



# Bookshelf

Rona Commins, *Alpha Delta, Sacramento Alumni*  
4331 Sierra Madre Drive, Sacramento, CA 95864 Phone: 916-487-2137

Email: ronacommins@yahoo.com

John Duke (1899-1984) is indisputably one of the greatest American song composers of the twentieth century, with a long career as performer, teacher, lecturer, and writer on musical subjects. But it was twenty-three years after the composer's death that this collaborative publication by Robin Fisher (*Phi Xi, Sacramento Alumni*) and Ruth Friedberg brings Duke's own words down from dusty shelves. Friedberg and Fisher discovered in the Smith College Archives a trove of file folders filled with Duke's journals, scrapbooks, typed lecture manuscripts, and book drafts. From a diary he began as a 17-year-old student to letters written two months before his death, what the editors have preserved gives rare insight into the psyche of a gifted artist.

It is not often that an individual has both the artist's intuitive ability and the writer's intellectual insight. Here we see both sides of Duke as he ponders the artist's role in society, the source of creativity, God's role in the creative process, the relationship between artist and public, and the emerging "modern" idiom of 20th century American music. The importance of these writings to 21st century musicology is in the composer's own words that bring insight into the development of music in the 20th century.

Included are diary entries 1917-1930, newspaper columns and reviews 1925-1950, lectures from 1944, presentations and writings for Music Teachers National Association and National Association of Teachers of Singing 1950-1981, a 1982 oral history interview from Yale, and letters from Duke to Ruth Friedberg 1961-1984. Editors Friedberg and Fisher present the material in a masterful format that is logical and easy to follow.

## Importance of Spirit & Song

"At last I have started a diary!" writes Duke on October 2, 1917. "I have often thought it would be interesting in later years to have a record not only of

what I did, but what I thought while studying at Peabody." At sixteen John Duke was awarded a full scholarship to study piano and composition at Peabody Conservatory in Baltimore.

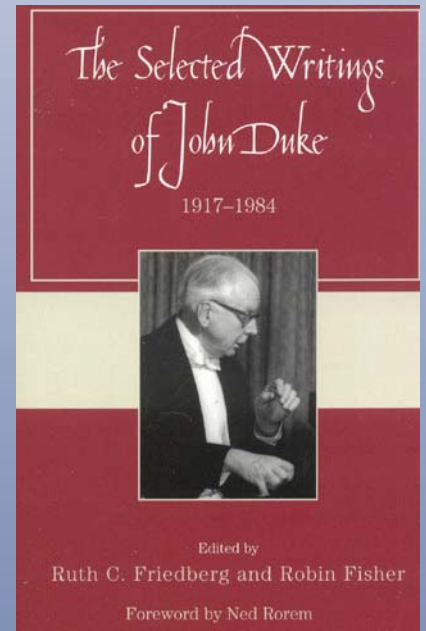
October 26, 1917: "This diary is an attempt to show what the real 'I' thinks and does ... I hope that sometime I may be able to express these big ideas which come into my mind, in my playing."

Duke's writings have a distinct spiritual element. Diary, November 27: "I am going to leave for home ... and say good-bye to my diary and my Baltimore life for a few days. But don't worry, I'll be back soon to learn more about this wonderful gift of God: Music." Essay fragments, 1920-1926: "Divine inspiration... (is) the true source for spontaneous and original creativity." Lecture, 1944: "Skepticism about religion has driven people to art as the only remaining repository of great spiritual experience."

He also believed strongly in melody and song. To the NATS convention, 1954: "The song element, the vocal impulse, is really the basic element in all music ... instrumental music is only effective in so far as it extends in time and enlarges in scope the vocal or melodic essence." Letters to Ruth Friedberg, June 18, 1961: "Vocal utterance is the basis of music's mystery ... Using words as musical material seemed to give my songs a quality that my instrumental music lacked."

Thanks to Friedberg and Fisher, we now can see John Duke as not only a gifted song composer, but also an articulate intellectual, philosopher, critic, and musical arbiter of the last century.

*Dr. Robin Fisher is Assistant Professor of Voice at Sacramento State University and an active opera and concert artist. Ruth Friedberg, Professor Emerita at Duke University, is a pianist, music writer, and lecture-recitalist.*



Ruth C. Friedberg and  
Robin Fisher, editors, 2007  
Paperback, 262 pp, \$45.00  
ISBN-10: 0-8108-5867-3

Includes: 13 b&w photos,  
appendixes, bibliography,  
and index.

Scarecrow Press,  
The Rowman & Littlefield  
Publishing Group, Inc.  
4501 Forbes Boulevard  
Suite 200  
Lanham, Maryland 20706  
1-800-462-6420  
fax 717-794-3803  
www.scarecrowpress.com

# International Corner

Doris Braun Alpha Kappa, Kansas City Alumni

## Introducing the International Committee

The Mu Phi Epsilon International Committee has been formed because we now have members all over the world, and will have more as our foreign student members finish their studies and return to their own countries. I will compile and keep updated a list of these members, with addresses and e-mail, to help them stay in touch with Mu Phi Epsilon and vice versa. It is my pleasure to announce the inaugural International Committee members:

- Andrew Cooperstock (*Mu Kappa*), faculty at University of Colorado and Brevard Music Center
- Keith Ford (*Alpha Kappa, Allied*), performer and music educator living in London, England
- Myrta Knox (*Epsilon Psi, Rochester Alumni*)
- Alex Shapiro (*Phi Nu, Allied*) composer
- Jeanine Wagner (*Epsilon Kappa*), faculty at University of Illinois

Each introduces herself or himself to *Triangle* readers, below. All have suggested needs the committee might address — such as tips on travel to certain locations, monetary exchange issues, language difficulties, and local customs to observe while visiting countries outside the U.S. — and offer their help to aid members facing any of these problems. Please contact me at [dorrislu@aol.com](mailto:dorrislu@aol.com) or 816-942-5533 with your inquiry.



**Doris Braun**  
International  
Committee Chairman

### Andrew Cooperstock



Heralded as a “technically impeccable and musically profound” pianist, Andrew Cooperstock performs widely as soloist and chamber musician and has appeared throughout five continents and in most of the fifty states. As the award-winning Opus Two with violinist William Terwilliger, he has recorded Aaron Copland’s complete works for piano and violin

and performed them worldwide. A graduate of the Juilliard School and the Cincinnati and Peabody Conservatories, Andrew currently chairs the keyboard department at the University of Colorado at Boulder and is a member of the artist-faculty at North Carolina’s Brevard Music Center. An initiate of *Mu Kappa*, he served on the International Foundation Board and is faculty advisor to *Delta Rho*.

### Alex Shapiro



I’m a composer steeped in the world of acoustic and electro-acoustic chamber music, and a great deal of my work emanates from people around the world whom I’ve never met. I’ve worked professionally as a composer since I was sixteen, and over the decades that have passed, much has changed in the way musicians build their careers. Thanks to the Internet, the tools now available to us are stunningly effective and allow all artists to be heard. I was delighted when I was invited to join

Mu Phi Epsilon’s International Committee because I believe the best way to help our colleagues develop their talents is to stress that none of us are local anymore. The more easily we can cross boundaries in our music and in our collaborations, the better for the state of our art. Mu Phi Epsilon can assist its members by helping them attain proficiency with the tools that will shift their careers to a joyful, global presence.



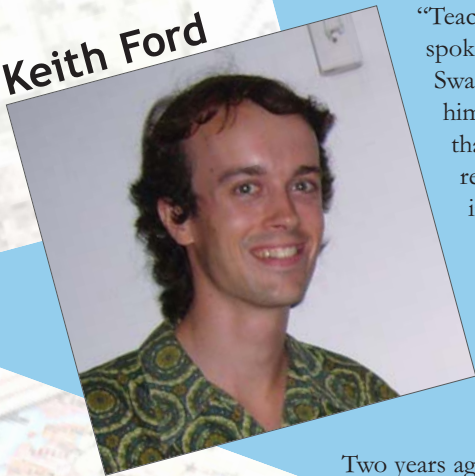
**Myrta Knox**



I became a Mu Phi Epsilon member on May 22, 1959 at *Epsilon Psi* (University of Illinois) and ever since I have been happily exercising our goals of Music, Friendship, and Harmony. Mu Phi provided many opportunities to sing and gave me incentive to practice, study, and take care of my voice just for the joy of music. When I became a member of this wonderful organization, I had no idea how much it was going to enrich my life. I found that being of service through music is extremely gratifying. I was

privileged to serve as president of the Rochester Alumni Chapter, District Director for Eastern Great Lakes, Province Governor for the same area, on the Executive Board for six years, and as ACME chairman for several years. As Vice President, Extension Officer, I helped establish several new chapters including our first Canadian chapter. Working with members for the good of our fraternity was a pleasure and the friendships made along the way will last forever. At the 2003 Centennial Convention in Cincinnati, it was a great surprise and honor to receive the Eleanor Wilson and Rosalie Speciale Lifetime Achievement Award.

**Keith Ford**



“Teacher, do you play blues?” Robert spoke Swahili and a little English, and my Swahili was limited. I began teaching him the notes of the blues scale, but that was too difficult. I tried a call and response technique, playing riffs within the scale while playing the twelve-bar blues with my other hand. This was working; Robert was hearing. After a few sessions, he was so creatively stimulated that he composed his own pieces from what he had learned.

like me but play different kinds of music. How do we stretch ourselves as artists? As a student, how do you grow a vision that goes beyond your degree program? These questions become only more interesting within an international context. We grow from connecting with musicians or other creative types outside our frame of reference.

Two years ago I finished my conservatory studies and looked forward to spending more time with Middle Eastern and East African music. I have made many interesting discoveries along the way in my collaborations with people who are musical

One of my former teachers aptly described such activities as being like a Petri dish experiment. If you put in a bit of music history, theory, piano lessons, etc., you are sure to get out of it a degree of some kind. If you throw something a bit more foreign into the mix, you don't know what you'll get, because no one will ever have added that particular ingredient. What is the ingredient you have yet to put into your musical mix?

**Jeanine Wagner**



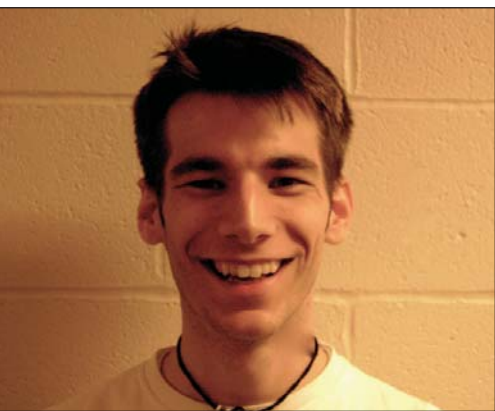
Jeanine Wagner has been on the voice faculty at Southern Illinois University at Carbondale since 1984. Noted as a soloist with a voice of “great beauty, expressive power and artistic quality,” Ms. Wagner was the 1994 winner of the Artist Presentation Society Award in St. Louis and the 1992 winner of the Mu Phi Epsilon International Competition. She was also an international finalist in the Luciano Pavarotti Competition and a regional winner in the Metropolitan Opera auditions. Her oper-

atic roles include The Queen of the Night in *Die Zauberflöte*, Constanze in *Die Entführung aus dem Serail*, the title role in *Rodelinda*, and Cunegonde in *Candide*. She and Margaret Simmons have presented concerts together throughout the U.S. and Canada and have given numerous recitals in Riga, Latvia, where Jeanine has also been a soloist with the Rigas Muzikalais Teatris Orchestra and Philharmonic Orchestra. An Associate Professor of Music at SIUC, she holds a DMA in voice from the University of Illinois and an MM in opera and musical theater from SIUC.

## Music Business Education: A Student Perspective

By **Melissa Eddy**, *Mu Theta, Austin Alumni*

Students across the country increasingly recognize the career potential of the business side of music. As interest grows, many colleges and universities are adding a music business major or related emphasis to their programs. Among them is Baldwin-Wallace College, home of the *Mu Phi* collegiate chapter. There the *Triangle* caught up with new *Mu Phi* member **Adam Sheldon**, who e-mailed with us about his arts management studies.



**Triangle:** What was your musical background before college?

**Adam:** Throughout middle school I participated in choral activities such as regional and state honors choirs, local school groups, and camps. In high school I continued to be extremely active in my ensemble and also attended two consecutive Interlochen summer sessions. Being an active part of your school really opens doors for leadership opportunities and networking with other area students. My junior and senior year, I was elected president of my choirs and asked to help organize and manage administrative tasks for all ensembles. This is where I really began to get a feel for what this career would be like.

**How did you become interested in studying music business?**

I came into college focused on a music education degree. In my first year I got the opportunity to work in the Conservatory's Outreach Department; the director is also the advisor for my school's Arts Management Program. Hearing a lot about the program and its opportunities, I spoke with him more about it and added the arts management emphasis last semester.

**What courses are included in your arts management emphasis?**

Students in the arts management program are required to have a minor in some area of business (administration, marketing, etc.); mine is in management. We also must have a fine arts major or minor (I have a music education major) and take specific arts management courses. Two internships are also required; I will do one this semester. I will have the opportunity to mix working with ensembles in an educational way (leading warm-ups, sectionals, rehearsals) and overseeing the ensembles' administrative responsibilities.

**Do you have a role model?**

I admire Bryan Bowser, the director of the Conservatory Outreach Department. He has a degree in music education and is actively pursuing an MBA. He teaches and also handles administrative tasks of the Conservatory. He works a lot in the surrounding community with programs, lessons, and concerts.

**What kind of work do you hope to do in the music business after graduation?**

I'm hoping to be an educator of music and manage arts programs. I know the things I get from this program will benefit me in numerous ways as I go out into a career in management and/or education. ▲

## Examples of Music Business Education Programs

Two institutions with *Mu Phi Epsilon* chapters (Baldwin-Wallace College, *Mu Phi*, and Western Illinois University, *Beta Omicron*) also have well-established music business or arts management programs. The programs illustrate the different directions such a career might take. Here are brief descriptions of each, excerpted from their web sites:

The **Arts Management Program** at **Baldwin-Wallace** prepares students to integrate the artistic and business elements of a career in the arts. The program consists at its minimum of a dance, music, theatre or visual art minor, a business minor, and dedicated arts management classes.



Photo Courtesy of the Western University Visual Production Center

Business and arts courses are taught by faculty from those academic divisions, while local arts management professionals serve as adjunct faculty and guest instructors to teach the arts management classes, directly linking students with professionals in the field. The required arts management courses are:

- Fine Art Appreciation
- Public Relations, Marketing & Fundraising for the Arts
- On-Campus Internship
- Senior Experience
- Off-campus Internship

For more information visit [www.bw.edu/academics/conservatory/academics/amg](http://www.bw.edu/academics/conservatory/academics/amg).



The **Western Illinois University School of Music** offers a **B.A. in Music Business** degree.

It provides a strong foundation in both music and business principles

and is the only music business program at an Illinois state institution to be accredited by both NASM and NAMM. In addition to required general education curriculum, the music business degree program consists of music core courses, including applied study in one principal performance medium; business courses in accounting, management, marketing, and others; a group of directed electives in business and music; and specific music business classes, which are:

- Introduction to Music Business
- American Popular Music
- Music Publishing
- Music Recording and Production Techniques OR Techniques of Electronic Music
- Current Issues in Music Business
- Internship

For more information, visit [www.wiu.edu/majors/degreeOverview.sphp?degree=58](http://www.wiu.edu/majors/degreeOverview.sphp?degree=58) and [www.wiu.edu/catalog/programs/music.php](http://www.wiu.edu/catalog/programs/music.php)

# MU PHI EPSILON FOUNDATION

## Mu Phi Epsilon International Artist RUSLAN BIRYUKOV



“An extraordinary, one of a kind performer. He has everything: technique, virtuosity, personality, communication, attractive and articulate presence, a great human story and background!” *Peter Mark, Artistic Director, Virginia Opera, General & Artistic Director, International Opera Alliance*

“A charismatic performer who brings the audiences to their feet. His artistry is both sensitive and passionate and his technical command of the instrument is stun-

ning.” – *The late Eleonore Schoenfeld, Piatigorsky Chair, USC Thornton School of Music*

Heralded as a charismatic performer, cellist **Ruslan Biryukov** is a musician who is committed to a lifetime of music making. His prodigal magnificence of cello sounds is shaped as a flowing monument to a concert that equates a sense of life with a sense of beauty. Mr. Biryukov’s schedule includes over one hundred performances annually, serving the purpose of sharing the art of music with audiences from all walks of life.

A DVD of Ruslan is available for any chapters interested in booking an Artist Concert by Ruslan. Contact the Concert Manager for a copy. See below for the contact information.

## HOW TO PRESENT AN ARTIST CONCERT

Has your chapter hosted an artist concert? If not, you should plan now to present our International Competition winner, Ruslan Biryukov, cellist, in a concert on your campus or in your city during the 2007/2008 or 2008/2009 or 2009/2010 seasons. It’s easy. All you have to do is fill out an “Official Booking Form” and send it with a check for \$200 made out to *Mu Phi Epsilon Foundation* to the Concert Manager listed below.

\$200 may seem like a big amount, but if you have ever tried booking an artist of the caliber of our competition winner, you know that most artist fees begin at \$600. The Foundation pays all travel expenses to and from each concert. Your responsibility while the artist is in your city is to provide an accompanist for solo recitals, housing, meals and transportation to and from the airport and within the city. Your chapter is also responsible for booking the hall, having the piano tuned, printing the programs, and making sure that there is enough advance publicity to have an audience of at least 75. The Foundation will provide you with a glossy print photo of the artist, program information, and biographical material to use for publicity.

There are many things you can do to make each of these tasks easier. If you are a small chapter, you may wish to co-sponsor a

concert with a neighboring alumni or collegiate chapter. Both chapters get credit and can share the duties. If the \$200 booking fee is a daunting prospect, why not try getting a local business to come up with a 50% match (list their names in the program). Perhaps a local bakery would provide refreshments for the reception. (Again, their name in the program is good advertising for them.) Don’t be afraid to ask for help. Many times people are just waiting to be asked, and you are providing a big service to the community by presenting a concert artist.

Did you know that our concert artist will also present one community service project and/or master class in addition to the formal concert? That is why you shouldn’t be shy about reaching out to corporations in your community for financial help.

Presenting a concert is a big job, but the experience you gain, the satisfaction which comes from hearing the results of your hard work, and the praise you will receive from all those who attend the concert will make it worth every bit of effort you put into it. So don’t delay. Send in your preliminary booking form soon!

### Help Wanted!!!

Mu Phi Epsilon Foundation has been very blessed by some generous bequests in the past three years that have allowed the addition of new projects along with the funding for promoting what it has always offered. What is needed are people to help with getting the message out to more people about these great programs. With modern technology there are many ways to do this more effectively and economically than in the past. But the Foundation needs people who have the expertise to take advantage of these methods. People for the following positions are needed:

**Publicity Chairman, Webmaster,** and a **Concert Manager** for the International Artist Concerts. In August we will also need two new Directors for the Mu Phi Epsilon Foundation

### Help Wanted!!!

Board. If you are available or know of someone who might fill these positions, please contact either of the following:

Lenita McCallum, President  
933 Via Rincon  
Palos Verdes Est., CA 90274  
(310) 375-8769  
E-mail: lbandcb@cox.net

Sandra Wiese, Treasurer / Concert Manager  
9099 Regency Woods Drive  
Kirtland, OH 44094  
(440) 256-5212  
E-mail: slw.mpeft@gmail.com

### Help Wanted!!!



# Upon Listening

Sherry Kloss, Epsilon Upsilon, Muncie Alumni  
3510 West University Ave, Muncie, IN 47303

Phone: 765-287-8469

Email: sherkl@excite.com

Upon listening to *Wine for the Soul*, music for harpsichord performed by Nancy Metzger (*Nu, Sacramento Alumni*), you will enter an enchanting world of the Baroque era. The composers Johann J. Froberger (middle 17th century), George Friedrich Handel and Johann Sebastian Bach (early 18th century), all organists, created music abundant in tonal and rhythmic vibrancy. This CD provides a compelling and memorable listening experience that joins music written more than three hundred years ago with performance on a contemporary harpsichord, built in 1994 by Byron Will. Ms. Metzger produces richness of sound, communicates mastery of style, and demonstrates personal conviction.

The program begins with J. S. Bach's brilliant "Chromatic Fantasy" and concludes with his Toccata in G Major. Both are instilled with musical and rhythmic momentum, stylistic articulation, and exquisite ornamentation. With a natural sense of musical direction, the artist travels through the musical key centers with freedom, yet always maintains the rhythmic architecture. Her interpretation displays the composer's improvisational intent in a convincing manner.

Handel's Suite No. 1 in A Major consists of dance movements that bring to mind the partitas of J. S. Bach. The Prelude and the following Allemande, Courante, and Gigue movements employ dotted rhythms characteristic of the French overture, providing an excellent glimpse of the stylized period dances. The "Overture to Amagigi," rich in ornamentation, dotted rhythms, and abounding charm, is a refreshing reminder of the expressive possibilities that lie within simplicity of structure.

German composer Froberger's "Toccata II" is a virtuosic display of compositional and performance brilliance. Improvisation contrasts with the formal structure of the fugato, all within a maze of harmonies, dynamic contrasts, and true deep probing. Especially in the Sarabande there is rich harmonization, with full octave sound amidst filigrees of ornamentation. This is ravishing music performed by a compelling harpsichordist.

Nancy Metzger is a harpsichordist, organist, educator, and author of *Harpsichord Technique: A Guide to Expressivity*. She has performed throughout the world and is currently president of *Sacramento Alumni*.



### Product Details

**Wine for the Soul**  
**\$15.00**

**Musica Dulce**  
6827 Coachlite Way  
Sacramento, CA 95831  
USA  
tel: 916-422-5168

email:  
musicadulce@rcip.com

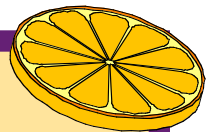
website:  
<http://www.rcip.com/musicadulce>



Nancy Metzger pursued musical studies at Syracuse University, the University of Oregon, and California State University, Sacramento. She holds a master's degree in music history, and was for several years a church musician, independent studio teacher and college music professor. Mrs. Metzger has performed public recitals on both harpsichord and organ throughout the USA and abroad.

Mrs. Metzger is widely known as the author of *Harpsichord Technique: A Guide to Expressivity*. Now in its second edition, this manual of Baroque performance practice is used throughout the U.S. and other English speaking countries.

Bookings and inquiries may be made directly to Nancy Metzger at [nmetzger@rcip.com](mailto:nmetzger@rcip.com)



### CONVENTION 2008 MUSIC DELEGATES WANTED

*The spotlight could be yours!* Share your musical talent and accomplishment with other Mu Phi members by being a Music Delegate at convention. Applications have been mailed to chapters and are also available through the International Executive Office and online. Deadline is March 1, 2008.

## Julia Scherer: Passion for Pianos and People

By Melissa Eddy, *Mu Theta, Austin Alumni*



Julia Scherer's initial reaction on being asked for a *Triangle* interview was, "Li'l ol' me?" Yet her diverse career is a good example of how a trained musician can find a satisfying niche in the business side of music. Julia began piano lessons at seven, continuing into college.

Her undergraduate major was linguistics with a piano performance minor, and her love for music led her later to take a master's in piano performance and pedagogy at Texas Tech University. She subsequently helped one of her teachers there, William Westney, develop and market his groundbreaking Un-Master Class, her first foray into the administrative side of music. She has been an active teacher and performer for over two decades. Initiated to *Alpha Kappa* in 1994, she is presently affiliated with *Kansas City Alumni*.

### Unexpected Turns

In 2003 Julia's professional life took an unexpected turn when she became Director of Development for Kansas City's Friends of Chamber Music. Julia says, "I'd been attending their Master Pianists series for over a decade and was thrilled to be offered this job. My three years with The Friends brought me into exhilarating contact with the world's finest musicians and also, as chief fundraiser for the organization, with respected community leaders and donors."

Another unexpected turn came in August 2006 when Schmitt Music – the Kansas City area's Steinway/Boston as well as Yamaha dealer – asked Julia to consider working for them. "Selling pianos had,

frankly, never occurred to me. But I agreed to have lunch and listen to what they had in mind." She learned that Schmitt's was looking for a particular profile – piano teacher – and realized that the job encompassed her favorite things: pianos and interacting with people.

Working on commission scared her, but she took the plunge. Now, she says, work "doesn't even feel like coming to work. I get paid to follow my passion!" And selling wasn't such a big leap: "As musicians we sell ourselves and the music we perform every time we go onstage."

### Matching People and Pianos

Although her job title is salesperson, Julia thinks of herself as a matchmaker, connecting people with just the right instruments. "I wouldn't dream of selling someone something that wasn't right for them. My job is to help people figure out what they need. My years as a teacher come in handy and my network in the music community is also an enormous asset." She says her Mu Phi membership adds to her credibility and is an important part of her network. Schmitt's hosted a recent Kansas City Alumni meeting where, surrounded by gorgeous Steinways, technician John Yeradi enchanted members with his presentation about what makes Steinway so special to concert artists the world over.

As a classically trained pianist, Julia was acquainted with both Steinway/Boston and Yamaha acoustic pianos, but had little knowledge of the Yamaha Clavinovas and Disklaviers, so she had to learn quickly. "Clavinovas are very fine digital pianos. They come closer than anything I've ever played to an acoustic grand piano, both in sound and feel. Disklavier is the state-of-

the-art player piano that marries a superb acoustic piano to a sophisticated computer, resulting in an instrument that can play back exactly what the pianist played, including every nuance of pedaling. We've come a long way from the old paper piano rolls!" The job has also heightened her skills in managing time and – since she works on commission – personal budgeting.

### Passion for Customer Service

Julia's workdays are focused on customer service. She responds to phone and email queries, interacts with drop-in customers, and follows up with those from previous days. She takes her turn with phone duty: "It's really important that when people call, they reach a pleasant, knowledgeable, caring person." She helps to prepare the in-store performance center for recitals and to produce special events such as clinics for people who have purchased Clavinovas and Disklaviers. Oh, and when she has time, she dusts the pianos. It's all worked quite well for her: she's already won an award as a top Disklavier salesperson and also sold the store's stunning rosewood Henry Z. Steinway Limited Edition Model B piano – an instrument priced upwards of \$130,000.

Julia Scherer has an uplifting philosophy about selling pianos. "It's enormously satisfying to connect people with an instrument that they love. The more inspiring the instrument, the more the person will want to play, practice and grow." Julia wouldn't say so, but her enthusiasm and matchmaking probably have something to do with it, too. ▲

Contact Julia at [julia.scherer@schmittmusic.com](mailto:julia.scherer@schmittmusic.com). She invites you to visit Schmitt Music's website at [www.schmittmusic.com](http://www.schmittmusic.com). To learn about the Un-Master Class visit [www.williamwestney.com/un-master\\_class.php](http://www.williamwestney.com/un-master_class.php).

# New Honorees

by Carolyn Hoover, *Mu Pi, Tacoma Alumni*, ACME Chairman  
 Tel: (206) 463-4605 Email: ACME@MuPhiEpsilon.org

Singer and composer **Adrienne Albert**, the child of European-trained professional violinists, began studying piano at age four and composition at ten. She earned a music degree from UCLA, and her piano teachers have included Jacob Gimpel and Aube Tzerko in Los Angeles and Joanna Graudan at Aspen Music School. She later studied composition with Stephan Mosko and orchestration with Albert Harris.



As a singer Adrienne has collaborated with composers like Igor Stravinsky, Leonard Bernstein, Phillip Glass, and Gunther Schuller, to name a few. Stravinsky discovered her “perfect boy alto” voice and hired her to be the alto soloist in his Mass. She

worked with the maestro on many occasions and made three solo recordings with him. Adrienne also enjoyed a long working relationship with Bernstein as a singer and as a contractor on the celebrated recordings of his Mass. Other Albert recordings include Charles Ives songs with the Columbia Symphony and Phillip Glass’s opera *The Photographer* with Glass conducting. She also worked as a studio singer in New York and Los Angeles.

She began composing her own music in the early 1990s, returning to UCLA to study composition and film scoring. She received a Certificate in Film Scoring in 1994 but found her strongest interest in writing music for the concert stage. Her concert works have been performed throughout the U.S., Europe, Thailand, and South Africa, and she has received many commissions, awards, and grants. She recently completed a work for Alaska’s Continental Harmony Project in Kenai, commissioned by the American Composers Forum and National Endowment for the Arts.

Adrienne writes, “Music has always been a central part of my life. Whether performing, singing, or composing, it is the thread that weaves through each part of my being. I find joy in every form of music ... We are each an amalgam of our pasts, influenced by our individual experiences, and I have been extremely fortunate to have had an extraordinary past which informs my present and makes me look forward with great enthusiasm to the future.”

Ms. Albert is the immediate past president of the *Los Angeles Alumni Chapter* of Mu Phi Epsilon. She is also a member of several other professional music organizations. For more information please see <http://www.adriennealbert.com>. Email Adrienne at [Adrienne@adriennealbert.com](mailto:Adrienne@adriennealbert.com).

Composer and educator **Dr. John McIntyre**, *Gamma Psi*, is currently on the faculty of Saint Mary-of-the-Wood College in Indiana. At Saint Mary he teaches music technology, counterpoint, and advanced composition, and has been involved with evaluations, faculty assembly tasks, and development of several new courses.



He brings to his teaching an academic background that touches on numerous musical genres. He earned a B.A. in music education from Western Washington State University and an M.M. in music theory and composition from the University of Miami. He topped those off with an eclectic D.M.A. from the University of Southern California that included study of church music, choral music, film scoring, history, and literature. He has further studied desktop music production and Gregorian paleography and chironomy at the Gregorian Chant Institute, Saint Joseph’s College in Rensselaer, Indiana.

Upon checking John’s web site one will find many compositions and recordings listed. Among his publishers are Live Oak House, Concordia Publishing House, Augsburg, Fortress Publishing, G.I.A., and the Lorenz Corporation. His compositions cover a wide gamut of combinations (choral to band, organ to brass) and follow both religious and secular persuasions. He has received many honors including ten ASCAPPLUS composer awards since 1998, most recently for 2007-2008. The award, given by the American Society of Composers, Authors and Publishers (ASCAP), reflects the Society’s continuing commitment to assist and encourage ASCAP composers. Awards are granted by an independent panel and are based upon the unique value and recent performances of the applicant’s catalog of original compositions.

Sister Martha Steidl, faculty member at Saint Mary and Fifth International Vice President of Mu Phi Epsilon, says of Dr. McIntyre: “Unusual in many ways, Dr. McIntyre was born and raised in Fairbanks, Alaska. As a teenager he was a reluctant pianist who preferred the tuba and guitar, but he is a lifelong learner ... John’s academic background ranges from Gregorian chant through contemporary, pop, electronic, and art music, enabling him to teach about, comment on, and perform in a wide range of styles ... The students here at Saint Mary-in-the-Wood College feel very comfortable with Dr. McIntyre and, among other things, initiated him into Mu Phi Epsilon. He is now the *Gamma Psi* chapter advisor.”

Dr. McIntyre is available to share his expertise and can be reached at [jmcintyre@smwc.edu](mailto:jmcintyre@smwc.edu). His web site is [www.jsmcintyre.com](http://www.jsmcintyre.com).

# District-Chapter Directory

\* Noted chapters are inactive.

## **ATLANTIC**

### **DISTRICT A1**

\*BETA-  
New England Cons, MA  
\*PHI UPSILON-Boston U, MA  
\*EPSILON PSI-  
The Juilliard School, NY  
\*GAMMA OMEGA-RI Coll  
BOSTON  
NEW YORK CITY  
\*PRINCETON

### **DISTRICT A2**

PHI GAMMA-Peabody Cons  
PHI PSI-Mary Washington U, VA  
DELTA DELTA-U of MD  
\*DELTA OMICRON-Salisbury  
State, MD  
PHILADELPHIA  
WASHINGTON DC

## **EASTERN GREAT LAKES**

### **DISTRICT EGL1**

LAMBDA-Ithaca Coll, NY  
MU UPSILON-Eastman School  
DELTA UPSILON-  
SUNY Geneseo, NY  
\*DELTA IOTA-  
U of Western Ontario  
\*ITHACA AREA  
ROCHESTER

### **DISTRICT EGL2**

PHI OMEGA-Westminster Coll  
\*EPSILON NU-WV University  
EPSILON UPSILON-  
Duquesne U, PA  
\*ALPHA THETA-PA State  
DELTA MU-  
Slippery Rock U, PA  
\*PITTSBURGH

### **DISTRICT EGL3**

PHI-Mount Union Coll, OH  
MU PHI-Baldwin-Wallace Coll  
PHI OMICRON-Cleveland Inst  
GAMMA PHI-Cleveland St  
ALLIANCE  
CLEVELAND  
CLEVELAND HEIGHTS

## **GREAT LAKES**

### **DISTRICT GL1**

GAMMA-U of MI  
\*PHI KAPPA-Wayne St U, MI  
EPSILON LAMBDA-  
Eastern MI  
DELTA GAMMA-  
Grand Valley State, MI  
ANN ARBOR  
DETROIT

### **DISTRICT GL2**

EPSILON-U of Toledo, OH  
MU PI-OH Wesleyan U  
TOLEDO

### **DISTRICT GL3**

\*MU XI-  
American Cons of Music, IL  
\*PHI SIGMA-DePaul U, IL  
\*EPSILON XI-U of IL  
GAMMA NU-Chicago St U  
\*CHICAGO SOUTHWEST  
GREATER CHICAGO  
URBANA-CHAMPAIGN

## **EAST CENTRAL**

### **DISTRICT EC1**

ALPHA ALPHA-  
Coll Cons-Cincinnati  
GAMMA ETA-Central St, OH  
CINCINNATI  
DAYTON

### **DISTRICT EC2**

KAPPA-Butler U, IN  
BETA THETA-TN Tech  
BETA PSI-U of IN  
BETA OMEGA-Ball St U  
\*DELTA KAPPA-  
Cumberland Coll, KY  
INDIANAPOLIS  
MUNCIE

### **DISTRICT EC3**

ZETA-DePauw U, IN  
EPSILON OMICRON-IN U  
GAMMA PSI-  
St Mary of the Woods, IN  
BLOOMINGTON  
TERRE HAUTE AREA

## **SOUTHEAST**

### **DISTRICT SE1**

ALPHA ZETA-Radford U, VA  
ALPHA XI-U of NC  
\*ALPHA UPSILON-  
Furman U, SC  
\*GAMMA RHO-NC A&T  
DELTA PHI-Averett Coll, VA

### **DISTRICT SE2**

MU-Brenau Coll, GA  
GAMMA PI-Shorter Coll, GA  
DELTA EPSILON-  
Columbus St U  
DELTA ZETA-Emory U, GA  
DELTA TAU-Mercer U, GA  
DELTA PSI-Clayton St U, GA  
ZETA GAMMA-Augusta St. U  
ATLANTA

### **DISTRICT SE3**

BETA BETA-Jacksonville U, FL  
\*DELTA ETA-U of No FL

### **DISTRICT SE4**

\*EPSILON GAMMA-  
Belhaven Coll, MS  
\*ALPHA GAMMA-  
U of So. MS  
\*BETA GAMMA-U of AL  
GAMMA ZETA-Delta St U, MS  
DELTA NU-Millsaps Coll, MS  
\*JACKSON

### **DISTRICT SE5**

BETA ZETA-Southern U, LA  
DELTA CHI-McNeese St U

## **SOUTH CENTRAL**

### **DISTRICT SC1a**

MU THETA-U of TX at Austin  
PHI XI-Baylor U, TX  
DELTA OMEGA-  
Our Lady of the Lake, TX  
AUSTIN  
HOUSTON

## **DISTRICT SC1b**

ALPHA PI-SW TX St  
BETA KAPPA-Trinity U, TX  
\*GAMMA DELTA-  
U of TX-Pan American  
GAMMA TAU-U of St Thomas  
SAN ANTONIO

## **DISTRICT SC2**

MU CHI-Southern Methodist U  
\*PHI TAU-U of No TX  
EPSILON EPSILON-  
TX Christian U  
ALPHA OMEGA-Stephen F  
Austin St, TX  
DELTA PI-Tarleton St, TX  
BETA MU-  
TX A&M U Commerce, TX  
DALLAS  
DENTON  
\*FORT WORTH

## **DISTRICT SC3**

EPSILON PI-TX Tech U  
\*ALPHA IOTA-Midwestern St,  
ALPHA NU-West TX A&M U  
ALPHA SIGMA-Abilene  
Christian U, TX  
\*LUBBOCK  
\*WICHITA FALLS

## **CENTRAL PROVINCE**

### **DISTRICT C1**

\*EPSILON KAPPA-  
So IL U-Carbondale  
\*EPSILON TAU-St Louis, MO  
\*BETA IOTA-  
So IL U-Edwardsville  
BETA OMICRON-Western IL U  
ZETA ALPHA-Williams Bapt  
Coll, AR  
ST LOUIS AREA

### **DISTRICT C2**

XI-U of KS  
\*MU MU-Manhattan, KS  
ALPHA KAPPA-  
U of MO Cons  
ALPHA MU-SW MO St  
\*GAMMA ALPHA-Evangel  
Coll, MO  
KANSAS CITY ALUMNI  
CHAPTER  
LAWRENCE  
SPRINGFIELD

## **NORTH CENTRAL**

### **DISTRICT NC1**

\*OMEGA-Drake U, IA  
MU ALPHA-Simpson Coll, IA  
MU PSI-Coe Coll, IA  
\*CEDAR RAPIDS  
DES MOINES

### **DISTRICT NC2**

\*PHI IOTA-Concordia Coll, MN  
EPSILON ALPHA-Coll of St  
Catherine, MN  
\*DELTA LAMBDA-  
Augsburg Coll, MN  
\*FARGO  
MINNEAPOLIS-ST. PAUL

## **DISTRICT NC3**

MU GAMMA-U of NE  
\*MU TAU-U of SD  
PHI ZETA-Morningside Coll, IA  
\*BETA NU-  
Dickinson St Coll, ND  
BETA PI-NE Wesleyan  
\*DICKINSON  
LINCOLN

## **WEST CENTRAL**

### **DISTRICT WC1**

\*MU KAPPA-U of OK  
GAMMA GAMMA-SW OK St  
GAMMA EPSILON-  
Oral Roberts U  
ZETA BETA-Cameron U, OK  
CENTRAL OKLAHOMA  
TULSA

### **DISTRICT WC2**

PHI PI-Wichita St U, KS  
EPSILON PHI-Friends U, KS  
\*ALPHA CHI-SW Coll, KS  
DELTA RHO-U of CO  
\*ALBUQUERQUE  
DENVER  
WICHITA

## **PACIFIC NORTH- WEST**

### **DISTRICT PNW1**

MU BETA-WA State U  
\*MU ZETA-Whitman Coll, WA  
\*EPSILON IOTA-  
E WA U, Cheney  
\*EPSILON RHO-U of MT  
\*ALPHA PSI-  
Whitworth Coll, WA  
\*GAMMA KAPPA-Boise St U  
\*PULLMAN  
SPOKANE

### **DISTRICT PNW2**

TAU-U of WA  
EPSILON SIGMA-  
Pacific Lutheran, WA  
BETA PHI-Seattle Pacific U, WA  
SEATTLE  
TACOMA

### **DISTRICT PNW3**

PHI LAMBDA-Willamette U  
\*BETA SIGMA-Western OR U  
\*EPSILON DELTA-  
Lewis & Clark, OR  
\*EPSILON THETA-  
Linfield Coll, OR  
\*ALPHA LAMBDA-Portland St  
NU-U of OR  
PORTLAND  
EUGENE  
SALEM

## **PACIFIC**

### **DISTRICT P1**

MU ETA-U of the Pacific, CA  
PHI CHI-Cal St-Fresno  
EPSILON MU-U of UT  
ALPHA DELTA-CSU-  
Sacramento  
\*BETA LAMBDA-CSU-Chico  
\*DELTA ALPHA, CSU  
FRESNO  
SACRAMENTO  
SALT LAKE CITY  
\*SAN JOAQUIN VALLEY

## **DISTRICT P2**

PHI MU-San Jose St  
\*EPSILON OMEGA-  
San Francisco St  
\*ALPHA EPSILON-  
Holy Names Coll  
\*BETA ETA-CSU-Hayward  
BERKELEY  
PALO ALTO  
SAN FRANCISCO  
SAN JOSE

## **PACIFIC SOUTHWEST**

### **DISTRICT PSW1**

MU NU-USC, Los Angeles, CA  
\*PHI NU-  
UCLA, Los Angeles, CA  
\*BETA DELTA-  
UCSB, Santa Barbara  
BEVERLY HILLS  
LOS ANGELES ALUMNI

### **DISTRICT PSW2**

BETA ALPHA-CSU-  
Fullerton, CA  
GAMMA SIGMA-CSUDH  
\*GAMMA CHI-  
CS Tech-Pomona, CA  
\*DELTA SIGMA-  
UC Irving, CA  
DELTA XI-AZ State U  
ZETA DELTA,  
U of LaVerne, CA  
\*BEACH CITIES SOUTH  
\*CLAREMONT  
FULLERTON  
SAN DIEGO  
PHOENIX  
PALOS VERDES PENINSULA

In October the Newstead Trio performed transcriptions by **Adrienne Albert** (*Phi Nu, Los Angeles Alumni*) of a suite of three Chinese folk songs by Wang Luobin. The performance took place at Tibet House in New York City.

**Maria-Pia Antonelli** (*Phi Upsilon, Boston Alumni*) and Lorraine DiGregorio gave a concert of 20th century semi-classical and popular Italian songs at the Dante Alighieri Center in October.

Flutists and *Ann Arbor Alumni* members **Debbie Ash** (*Gamma Omicron*) and **Glennis Stout** (*Phi Pi*) were roommates for the 40-member International Flute Orchestra's tour of Greece in May. The Orchestra visited historic sites and performed in Athens and Larissa, and took a cruise through the Greek Islands where they performed on the ship. Back in Michigan, Glennis gave demonstrations in Mt. Pleasant and Grand Rapids about the history of the flute, featuring twelve antique flutes and a Chinese flute from her collection, and Debbie played for an opera, several weddings, a flute camp, and the Plymouth Symphony.

Seven Grammy® Foundation Signature School Awards were presented to Texas schools for outstanding commitment to music education. The program was created in 1998 and awarded over \$20,000 in grants to 42 schools in 2006. Congratulations to Mu Phi teachers on these music faculties:

- Booker T. Washington High School for Performing and Visual Arts: **Beverly Chin** and **Tenesa Rasmussen**, both *Mu Chi*
- Flower Mound High School: **Darla McBryde Turner**, *Phi Xi*
- High School for Performing and Visual Arts in Houston: **Patricia Riggle Bonner**, *Mu Theta*
- Katy High School: **Cinthia Baeza**, *Epsilon Pi*
- Langham Creek High School, Houston: **Catherine Owens Wafford**, *Mu Chi*
- Midway High School, Waco: **Blair Williams**, *Phi Xi*

**Penny Fischer** (*Epsilon Lambda, Ann Arbor Alumni*) is principal flute with the Ann Arbor Symphony and a member of the symphony's Woodwind Quintet. She recently participated in the symphony's recording session of a work by Paul Fetler for the Naxos label. She also is president of Ann Arbor's Society for Musical Arts and immediate past president of the Southeast Michigan Flute Association.

Pianist **Madeleine Forte** (*Gamma Kappa, Allied*) and husband Allen were artists-in-residence at the University of Western Ontario in September. Madeleine has a new YouTube site featuring several recent performances. Visit [www.youtube.com/madeleineforte](http://www.youtube.com/madeleineforte).

Atlanta-area early music ensemble New Trinity Baroque, conducted by artistic director **Predrag Gosta** (*Delta Psi*), performed a November concert featuring works by Francesco Portinaro, a sixteenth-century composer whose works have recently been rediscovered.

*The World of Women in Classical Music* by **Ann Gray** (*Omega Omega*) has been nominated for two prestigious awards: a Pulitzer Prize in nonfiction and an ASCAP Deems Taylor Award for excellence in a publication about music. (See book review, Fall 2007 *Triangle*.) Ann writes, "I had the most unusual experience when I walked into [the Pulitzer] office when I was in New York in June. I gave the man my name and he said, 'Oh! You are Dr. Gray!' greeting me like a celebrity. It turned out that of the 2100 books submitted, at that precise moment he was handling mine! Just then the chair of the whole competition, Dr. Sig Gissler, walked in and I was introduced to him. He shook my hand warmly and exclaimed, 'Anne Gray! I received a letter about you and your book two weeks ago from Leonard Slatkin.' I consider this encounter an absolute miracle when one thinks of the odds of walking into that office at that moment."

**Melanie Hadderton**, *Alpha Iota*, is director of the Holiday High School Band in Wichita Falls, Texas, named as a 2007 Honor Band Finalist.

**CORRECTION:** The 2007 Chapter Advisor of the Year is **Marika Kyriakos** (*Alpha Kappa*). Her surname was misspelled in the Fall 2007 annual award announcements. *The Triangle* apologizes for the error.

**Sherri McMahon**, *Beta Alpha*, is a choir director at Klein Oak High School that was recently named a 2007 Grammy® Signature School and received a \$1,000 prize. The school was one of over 400 applicants and 22 prizewinners.

A composition by **Russell Nadel** (*Phi Gamma, Washington D.C. Alumni*) was premiered in October by the Woodbridge Flute Choir.

Six orchestral works by composer/pianist/author **Deon Neilsen Price** (*Gamma*) were recorded in the Ukraine in October by the Kiev Philharmonic Orchestra. Four pieces were under the direction of American conductor and 2007 Grammy® award winner John McLaughlin Williams, and two were directed by Californian guest conductor Berkeley Price. The CD will be released on the Cambria label in early 2008.

Senior choral music education major **Amey Szanto-Nicodemus** (Vice President, *Alpha Pi*) is co-founder, executive director, and lead music teacher of the New Braunfels (Texas) Theatre Company Performing Arts Academy, where she also teaches theatre and dance.

**Susan Williams**, *Mu Theta*, is director of the Westwood High School Orchestra in Round Rock, Texas. The orchestra was named as a 2007 Texas Honor Orchestra finalist.



# Encore

News from Chapters

According to the new (and, we might add, very spiffy) newsletter of *Alpha Pi*, the chapter's Recording Secretary **Audrey Dornbusch** is a fourth-generation Mu Phi, following her step-mother, aunt, grandmother, and great-grandmother! Audrey is a choral music education major, co-director of women's à capella ensemble Sugar & Spice, and a member of University Chorale at Texas State University.



notes to Ruth for a birthday memory book.

*Atlanta Alumni* held a special program in September to celebrate the 100th birthday of member **Ruth Allen** (*Mu Omega*). **Alice Oglesby**, **Bette Chambless**, and **Kay Haslett** performed and chapter members provided



**Pictured left to right. Front row:** Carol Cooper, Ruth Allen, Julia Torbert. **Back row:** Bette Chambless, Jean Somerlot, Jean Astrop, Kay Haslett, Margie Deer, Marilyn Dietrichs, Susan O'Leary, and Jean Woodruff Griffin.



**Cody Knott**, vice president of *Delta Pi* and marching band drum major at Tarleton State University, writes: "I would like to share a picture [of the Mu Phi flag] taken at our first football game of the season. It shows that no matter

which branch of music you are in, service counts, and that we of Delta Pi work well with the other three music organizations [on campus]. We would like all of Mu Phi to see what our chapter is doing to better Music, Friendship, and Harmony!"



*Delta Pi* chorister **Tracy Wier** (left) and vice president **Cody Knott**.

GL 1-2 District Director **Sue Owen-Bissiri** (*Lambda, Ann Arbor Alumni*) sends news of several *Gamma* members: Organist **Christine Chun** and pianist **Angela Wu** have received their doctorates and both have taken church positions in Michigan communities. **Xiaofeng Wu** passed his doctoral oral exams, then spent a few weeks in China in October. (All three were profiled in the spring 2007 *Triangle*.) Organist **Alan Knight** received his doctorate in spring 2007. Pianist **Dr. Kay Zavislak** has taken a faculty position at the University of Idaho after holding previous positions in piano pedagogy at the

University of Michigan and Albion College.

Note: In the Alumni Chapter Presidents directory in the Fall 2007 *Triangle*, the state of the **Bloomington** chapter was incorrect. The **Bloomington Alumni Chapter** is in Indiana. All other information in the listing is correct."

The September 2007 meeting of *Gamma Nu* featured "An Afternoon of Arias" presented by the Elgin (Illinois) Opera, accompanied by **Rosemary Schroeder** (*Phi Sigma, Greater Chicago Alumni*). The program, open to the public and presented in partnership with the *Greater Chicago Alumni*, Elgin Opera, and an area church, was a great opportunity for Mu Phi collegiate-alumni networking. The chapters were especially pleased that International President Fran Irwin attended.



**Pictured left to right. Front row:** Elaine Lavieri, Maribel Meisel **Middle:** Rosemary Schroeder, Reynolds Clifford, Fran Irwin, **Marion Kehrberg Back:** Mary Hough, Mark Sudeith

*Terre Haute Alumni* have focused their 07-08 programs on getting ready for Mu Phi's 2008 Convention. Called "Sea to Shining Sea," the series features chapter members' reminiscences of past conventions. Fall meetings recalled the Tacoma, San Antonio, and Greencastle conventions, with destination Cincinnati scheduled for January.

**Give Back to the Fraternity!**

**MΦE**  
MU PHI EPSILON

- New Products!
- Great Prices!
- Direct Support Programs!
- Perfect Graduation Gifts!
- Great for Alumni!
- Don't Miss Out on the Latest!

REGENT PROMOTIONS

**Ordering is easy online!**

[www.regentpromotions/mpe](http://www.regentpromotions/mpe)

# Final Notes

Wynona Wieting Lipsett, *Mu Chi*  
Immediate Past International President



Phone/Fax: (254) 562-9397

Email: wyndon@nctv.com

## Marjorie M. Shontz Adams

*Phi*, December 4, 2000

*Alliance Alumni*

Died May 11, 2007

Marjorie was the music librarian at Hiram College before her retirement in 1989, also a church musician, prolific composer, and accomplished pianist.

## Virginia Mary Davis Clevenger

*Mu Delta*, February 18, 1941

*Kansas City Alumni*

Died February 2, 2006

Virginia taught piano and voice and sang in choirs. She studied ballet and provided endowments for the advancement of music to various churches she attended.

## Elizabeth "Betty" Hamilton Dabcznki

*Mu Upsilon*, November 16, 1936

Died December 4, 2006

Betty was Eastman's first female French horn student and a highly regarded music educator. She taught in public schools, was an itinerant music supervisor in rural one-room schools, held numerous leadership positions, and received many awards for her service. Betty performed with the Rochester (NY) New Horizons Band, Westbrook (ME) Community Band, and Bridgton (ME) Band until shortly before her death at 89.

## Lois McNitt Dalzell

*Mu Mu*, March 25, 1928

*Fresno Alumni*

Died June 11, 2007

A high school music teacher in Kansas in her early years, Lois died at age 100.

## JoAnn Avery Eyre

*Phi Theta*, April 21, 1974

*St. Louis Area Alumni*

Died October 9, 2007

JoAnn was an organist, choir director, and church musician. She was a past president of the St. Louis Day Chapter and a member of American Guild of Organists.

## Mary Lucille Woodward Fischer

*Mu Kappa*, May 5, 1927

*Central Oklahoma Alumni*

Died October 11, 2007

Born in Indiana Territory 101 years ago, Mary Lu received her music degree from

University of Oklahoma where she sang in the Women's Quartet, had leading roles in musical productions, and was pianist for the OU radio station. She was a public school music teacher, church soloist, choir director, and private teacher of dance, voice and piano. She composed original lullabies for new mothers in her family and a musical prayer honoring Oklahoma City bombing victims.

## Martha Aladena Wilson Fontaine

*Zeta*, October 26, 1927

Died February 2, 2007

Aladena taught public school music and private piano. Active in her church, she contributed to Sunday school music and circle activities. As a member of Alpha Gamma Delta, she served as convention pianist, songbook co-editor and contributor, and in other leadership positions. She regularly played for Sunday vespers in her retirement home until her death at 100.

## Phyllis Jean "Jo" Ganoe

*Phi Lambda*, March 23, 1957

*Fresno Alumni*

Died July 1, 2007

Jo earned degrees in education, music, theology, and philosophy and had a fifty-year teaching career. She was recognized as an Outstanding Elementary Teacher of America in 1972 while teaching in the West Fresno School District, and St. Helen's School in Fresno named its Ganoe Library in her honor.

## Lois Jean Beamguard Sanford Hall

*Nu*, March 3, 1950

*Allied Alumni*

Died October 3, 2007

Lois was a public school music teacher in Idaho. Active in the children's music program at her church, she served as choir mother to ensure her own children were taught music.

## Ralph Kessler

*Phi Nu*, April 8, 1999

*San Fernando Valley Alumni*

Died October 5, 2007

A special election member, Ralph was a renowned composer, orchestrator, conductor, pianist and trumpeter. During WWII, he played first trumpet in Irving

Berlin's "This is the Army," and toured the world entertaining the troops. Also playing first trumpet in several Broadway musical theater productions, he was music arranger on the "Arthur Godfrey & Friends" television show during the 1950's. He received three Clio Awards for his scores for TV commercials. In Hollywood Ralph composed music for: "Jag," "Murder She Wrote," "Quincy," "Hawaii Five-O," "Streets of San Francisco," "Barnaby Jones," "Tiny Toons," and TV movies. He later composed a trumpet concerto, two tone poems and "The Journey of Odysseus" for symphony orchestra.

## Marian Janese Maddy Knight

*Phi Eta*, June 11, 1935

Died December 28, 2006

A Michigan State graduate with a double major in violin and piano, Marian was concertmaster for the university symphony. She began teaching privately in 1934 and used her earnings to purchase her first violin. An original member of the West Valley Symphony, she performed through the 2005 season when she retired at age 88. In 1994 she performed in Europe with the Brentwood Symphony Orchestra of St. Louis in a salute to the fiftieth anniversary of France's liberation.

## Marguerite C. O'Day

*Gamma Lambda*, February 16, 1974

*Denver Alumni*

Died July 6, 2007

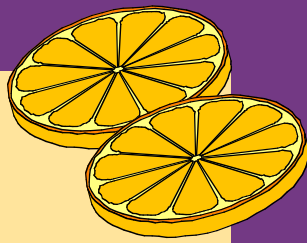
Marguerite was a church musician and music educator, serving for twenty-nine years as supervisor of elementary music education in Denver public schools. She received the Hall of Fame award from the Colorado Music Educators Association in 1955.

## Etta Frances Faires Trexler

*Mu Chi*, November 20, 1936

Died February 4, 2007

Etta wrote and published music to songs about Southern Methodist University while a student there in 1938. "We're Mustangs" and "Hail to SMU" are now in the Mu Phi Epsilon Library in the care of International Librarian Wendy Sistrunk.



# Artistry ACTION

Mu Phi Epsilon International Convention Jacksonville, FL - July 30-Aug 2, 2008

## Dr. Lynn M. Tschudy

*Epsilon Omicron*, April 1, 1982

Died July 31, 2006

Lynn was a professor of piano who received several school and national awards in recognition of her musical accomplishments. She will be remembered for deep faith, tremendous talent, and focused determination.

## Carla Wood Vincent

*Alpha Lambda*, November 15, 1959

*Portland Alumni*

Died May 29, 2007

Carla had her own radio show in the 1930's, teaching piano by ear (then the latest method). She went on to sixty-three years of teaching little fingers to play and hosting recitals in her Portland home, where she often took the bench herself to play the 1927 hit "Stardust."

## Mercedes Weed-Schmidt

*Sigma*, May 23, 1950

Died January 22, 2006

Mercedes was the owner of the Mohawk Paperback Exchange Bookstore in Springfield, Oregon. She died in an accident while riding her bicycle at age 77 with her grandson.

## Patron Remembered

### Dr. Carl Melvin Davidson, Jr.

*Patron, Los Angeles Alumni Chapter*

Born December 13, 1927

Died October 16, 2007

Dr. Davidson's life was dedicated to teaching the power and relevance of the arts. He held teaching and administrative posts at Nebraska Wesleyan University, Stephens College, and Loyola Marymount University from which he retired. He was the husband of Marian Bowker Davidson, who was national president of Mu Phi Epsilon 1974-1980 and continues to serve the Fraternity in many capacities, and was himself a staunch Mu Phi supporter. The *Los Angeles Alumni Chapter* writes: "Mel's contribution to our chapter and entire Fraternity can be said to be one of extreme loyalty. He was always there when you needed him."

## Convention Business

With convention only a few months away, chapters are selecting delegates and raising funds for their attendance. Don't forget these other business matters!

### International Executive Board Nominations

Do you know a dedicated Mu Phi with leadership experience? Consider nominating her or him for the International Executive Board. All international officer positions are open for the 2008-2010 triennium. IEB service is a lot of work but an invaluable networking opportunity and a lot of fun, too.

Nomination deadline is April 1, 2008.

### Special Award Nominations

Nominate outstanding members for these special awards given only at convention:

*Award of Merit* - Mu Phi who brings honor to the Fraternity

*Citation of Merit* - Non-member who has made major musical contributions

*Elizabeth Mathias* - Mu Phi recognized for unique achievement

*Lifetime Achievement* - Mu Phi for lifetime service to Fraternity beyond local chapter

*Orah Ashley Lamke* - Mu Phi for long and dedicated service without having held national office, given to a member from the convention host provinces (Atlantic and Southeast in 2008).

Nomination deadline is April 1, 2008.

### Silent Auction Donations

Chapters and individual members are asked to donate items and services for the silent auction. Books on musical subjects, music lessons, and artworks with a musical theme are just a few ideas. The more great items there are, the more successful and fun the silent auction will be. Think about what you would enjoy bidding on, and get creative!

Donation deadline is July 1, 2008.

Official forms for nominations and donations have been mailed to chapters and are also available through the International Executive Office.

# Collegiate Chapter Presidents

\* Noted chapters are inactive.

<b>A2</b> <b>DELTA DELTA</b> University of Maryland	<b>GL1</b> <b>DELTA GAMMA</b> Grand Valley State U. Brian Balch balchb@student.gvsu.edu	<b>KAPPA</b> Butler University John Doty jdoty@butler.edu	<b>GAMMA PI</b> Shorter College Jennifer Tripi jennifer.tripi@students.shorter.edu
<b>PHI GAMMA</b> Peabody Conservatory Mindy Heinsohn mheinso1@jhem.jhmi.edu	<b>EPSILON LAMBDA</b> Eastern Michigan Univ. Theresa Lynn Hintz thintz@emich.edu	<b>EC3</b> <b>EPSILON OMICRON</b> Indiana University Heather Bryan hbryan@indiana.edu	<b>MU</b> Brenau College Katherine Holley kholley@brenau.edu
<b>PHI PSI</b> Mary Washington Univ. Jeff Zieders	<b>GAMMA</b> University of Michigan Christine Chun cwchun@umich.edu	<b>GAMMA PSI</b> St. Mary of the Woods, IN Ariel White awhite@smwc.edu	<b>ZETA GAMMA</b> Augusta State Univ. Selina Maldonado smaldona@aug.edu
<b>EGL1</b> <b>DELTA UPSILON</b> SUNY	<b>GL2</b> <b>MU PI</b> Ohio Wesleyan Univ. EvaCecilia Koh eekoh@owu.edu	<b>ZETA</b> DePauw University Sarah Fox sfox@depauw.edu	<b>SE3</b> <b>BETA BETA</b> Jacksonville University
<b>LAMBDA</b> Ithaca College Melanie Wade wade.melanie@gmail.com	<b>EPSILON</b> University of Toledo Anne Doerfler Ad7440@sbcglobal.net	<b>SE1</b> <b>ALPHA XI</b> University of North Carolina at Greensboro Melissa Kessler muphialphaxi@yahoo.com	<b>SE4</b> <b>DELTA NU</b> Millsaps College Jacqueline Coale coalejf@millsaps.edu
<b>MU UPSILON</b> Eastman School Nate Reit nreit@mail.rochester.edu	<b>GL3</b> <b>GAMMA NU</b> Chicago State Univ. DoLisha Miller	<b>ALPHA ZETA</b> Radford University Tylia Jones tjones6@radford.edu	<b>DELTA ZETA</b> Emory University, GA Cole Wheelr findcole@gmail.com
<b>EGL2</b> <b>EPSILON UPSILON</b> Duquesne University Kenneth Perriello perriellok@duq.edu	<b>*Epsilon Xi</b> <b>*Mu Xi</b> <b>*Phi Sigma</b>	<b>DELTA PHI</b> Averett University James Abbott gospeldr@yahoo.com	<b>GAMMA ZETA</b> Delta State University Erik Taylor just_for19@yahoo.com
<b>PHI OMEGA</b> Westminster College, PA Jenna Diorio dioriojm@westminster.edu	<b>EC1</b> <b>ALPHA ALPHA</b> College Conservatory, Cincinnati Anna Alfeld scherzopower@yahoo.com	<b>SE2</b> <b>DELTA EPSILON</b> Columbus State Univ. Mark Dermer markdermer@gmail.com	<b>SE5</b> <b>BETA ZETA</b> Southern University Uletta S. Carter
<b>DELTA MU</b> Slippery Rock Univ. Rachel Ranson rgran24@sru.edu	<b>GAMMA ETA</b> Central State, Ohio Rachael Garrett rachaelonthekeys@yahoo.com	<b>DELTA ZETA</b> Emory University	<b>DELTA CHI</b> McNeese State Univ. Shani Harris Bagwell shanimarie81@hotmail.com
<b>EGL3</b> <b>PHI</b> Mount Union College Maria Fesz feszm@mu.edu	<b>EC2</b> <b>BETA OMEGA</b> Ball State University Leigh Alexovich laalexovich@bsu.edu	<b>DELTA PSI</b> Clayton College Christina Patterson Csu21125@ mail.claytonstate.net	<b>SC1</b> <b>ALPHA PI</b> Texas State University Christina Colgin musicatina08@hotmail.com
<b>PHI OMICRON</b> Cleveland Institute Lillia Keyes lillia.keyes@gmail.com	<b>BETA PSI</b> Univ. of Indianapolis Ryan Young youngre@uindy.edu	<b>DELTA TAU</b> Mercer University Julie Ann Collins thatsongjlikes@hotmail.com	<b>BETA KAPPA</b> Trinity University Analeasa Lopez analeasa.lopez@trinity.edu
<b>MU PHI</b> Baldwin Wallace Col. Mary Matthews mmatthew@bw.edu	<b>BETA THETA</b> Tennessee Tech Daniel Worthington drworthing21@tntech.edu		<b>DELTA OMEGA</b> Our Lady of the Lake Univ. Christina Reyes Daisyduck1985@yahoo.com
<b>GAMMA PHI</b> Cleveland State Univ.			

# 2007 - 2008

## **GAMMA TAU**

St. Thomas University  
Yvonne Velasquez  
velasqy@yahoo.com

## **MU THETA**

University of Texas  
Thomas DeWitt  
tkdewitt@mail.utexas.edu

## **PHI XI**

Baylor University  
Michelle Meneses  
michelle\_meneses@baylor.edu

## **SC2**

### **ALPHA OMEGA**

Stephen F. Austin Univ.  
Johanna Smith  
smithjm@titan.sfasu.edu

## **BETA MU**

Texas A&M University  
Heather Marie White  
Heather\_white@  
tamu-commerce.edu

## **DELTA PI**

Tarleton State Univ.  
Sarah Warner  
St\_swarnar@tarleton.edu

## **EPSILON EPSILON**

Texas Christian Univ.  
Corrie Linn Donovan  
c.donovan@tcu.edu

## **MU CHI**

Southern Methodist Univ.

## **SC3**

### **ALPHA NU**

West Texas A&M  
Rachel Johnson  
luckysonbird13@hotmail.com

## **ALPHA SIGMA**

Abilene Christian Univ.  
Bethany Smith  
bss05a@acu.edu

## **EPSILON PI**

Texas Tech University  
Kara Fortenberry  
karafortenberry@yahoo.com

## **C1**

### **BETA OMICRON**

Western Illinois Univ.  
Sarah Walker  
sjwalker87@yahoo.com

## **\*EPSILON KAPPA**

## **ZETA ALPHA**

William Baptist College  
Terry Henderson  
Hndrsn6@bscn.com

## **C2**

### **ALPHA KAPPA**

Univ. of Missouri  
Conservatory  
Jessica Sorn  
jms3kf@umkc.edu

## **XI**

University of Kansas  
Stephanie Schmid

## **ALPHA MU**

Missouri State Univ  
Sean Powell  
powell1@  
missouristate.edu

## **NC1**

### **MU ALPHA**

Simpson College, IA  
Sherrill Ann Buzbee  
sherrill.buzbee@simpson.edu

## **MU PSI**

Coe College, IA  
Courtney Cummings  
clcummin@coe.edu

## **NC2**

### **EPSILON ALPHA**

College of St. Catherine  
Kristie Tigges, FA  
kmtigges@stkate.edu

## **NC3**

### **BETA PI**

Nebraska Wesleyan  
Sara Smith  
ssmith4@nebrwesleyan.edu

## **MU GAMMA**

University of Nebraska  
David Woods  
dwoods@bigred.unl.edu

## **PHI ZETA**

Morningside College  
Marleta Smith  
mms003@morningside.edu

## **WC1**

### **GAMMA EPSILON**

Oral Roberts University

## **GAMMA GAMMA**

Southwest Oklahoma State Univ.  
Sarah Locke  
lockes@student.swosu.edu

## **ZETA BETA**

Cameron University, OK  
Clint Williams  
Cu\_composer@hotmail.com

## **WC2**

DELTA RHO  
University of Colorado  
Amanda Setlik  
asetlik@gmail.com

## **EPSILON PHI**

Friends University  
Danielle Scott  
scottda@friends.edu

## **PHI PI**

Wichita State University  
Sarah Fraser  
Ophelia\_124@hotmail.com

## **PNW1**

### **MU BETA**

Washington State University  
Rachel Waniata  
rachel\_waniata@mail.wsu.edu

## **PNW2**

### **BETA PHI**

Seattle Pacific University

## **EPSILON SIGMA**

Pacific Lutheran University

## **TAU**

University of Washington  
Lincoln Ballard  
lincolnatfsu@hotmail.com

## **PNW3**

### **PHI LAMBDA**

Willamette University  
Bonnie Jean Monk  
bmonk@willamette.edu

## **NU**

University of Oregon  
Crystal Zimmerman  
Czimmer2@uoregon.edu

## **P1**

### **ALPHA DELTA**

California State University  
Jonathan Hansen  
erikvonriese@yahoo.com

## **EPSILON MU**

University of Utah

## **MU ETA**

University of the Pacific  
Christine Parks  
fluffybalerina@yahoo.com

## **PHI CHI**

California State Fresno  
Mandi Griggs  
Dandi\_mandi16@hotmail.com

## **P2**

### **PHI MU**

San Jose State  
Katie Dukes  
phi\_mu\_president@yahoo.com

## **PSW1**

### **\*PHI NU**

UCLA

## **\*BETA DELTA**

UC Santa Barbara

## **MU NU**

USC, Los Angeles  
Ruslan Biryukov  
altopolis@gmail.com

## **GAMMA SIGMA**

CSU Dominguez Hills  
Micheal Lloyd  
tcbdrummer@aol.com

## **PSW2**

### **BETA ALPHA**

CSU Fullerton  
Athena Marie Reyes  
athenamarie@  
student.fullerton.edu

## **ZETA DELTA**

University of LaVerne, CA  
Sarrie Fleming  
sfleming2@ulv.edu

# District Directors

## **ATLANTIC DISTRICT A1**

Beverly Whitney  
8 Phillips Drive  
Westford MA 01886-3409  
(978) 692-7353  
Beverly158@msn.com

## **DISTRICT A2**

Elizabeth White  
3158 Gracefield Rd.  
Silver Spring, MD 20904  
(877) 801-2808  
dandewhite@comcast.net

## **EASTERN GREAT LAKES**

### **DISTRICT EGL1**

Signe Zale  
709 Whittier Road  
Spencerport, NY 14559  
(585) 594-8422  
sigbobzale@aol.com

### **DISTRICT EGL2**

Shannon Engle  
447 Millbridge Drive  
Lebanon, PA 17042  
(717) 279-7399  
daizhan@verizon.net

### **DISTRICT EGL3**

Nancy Jane Gray  
3070 Orchard Rd  
Silver Lake Village, OH  
44224-3126  
(330) 688-7990  
bobgrayz@aol.com

## **GREAT LAKES**

### **DISTRICT GL1 & GL2**

Susan Owen Bissiri  
2828 Hawks Avenue  
Ann Arbor, MI 48108  
(734) 971-1084  
slbissiri@sbcglobal.net

### **DISTRICT GL3**

Rosemary Schroeder  
3020 Majestic Oaks Lane  
St. Charles, IL 60174  
artws@aol.com

## **EAST CENTRAL**

### **DISTRICT EC1**

Marva Rasmussen  
5520 Homecrest Ln  
Mason, OH 45040  
marvarasmussen@aol.com

## **DISTRICT EC2**

Barbara Medlicott  
2530 Chaseway Court  
Indianapolis, IN 46268  
(317) 879-0999  
bmedlicotti@aol.com

## **DISTRICT EC3**

Director: TBA

## **SOUTHEAST**

### **DISTRICT SE1**

Kiyoshi Carter  
1015 Idlewood Drive  
Greensboro, NC 27408  
(336) 337-4937  
carterk@gcsnc.com

### **DISTRICT SE2**

Director: TBA

### **DISTRICT SE3**

Melissa Voshell  
12428 Hickory Forest Rd.  
Jacksonville, FL 32226-4204  
(904) 714-9553  
melflutey@bellsouth.net

### **DISTRICT SE4 & SE5**

Kimberly Richardson Gross  
16334 Mockingbird Lane  
Baton Rouge, LA 70819  
(225) 266-8631  
krgross1@cox.net  
choklatcitee@yahoo.com

## **SOUTH CENTRAL**

### **DISTRICT SC1**

*Co-Directors*  
Jediah Spurlock  
6408 Starstreak Drive  
Austin, TX 78745  
(512) 743-7894 cell  
sistas0ul@aol.com

Elda Garcia

911 Battle Bend #224  
Austin, TX 78745  
(512) 289-7113  
mezzoallegra@yahoo.com

### **DISTRICT SC2**

Sandra McMillen  
306 Shorewood Drive  
Duncanville, TX 75116  
(972) 298-5910  
skmcmillen@yahoo.com

## **DISTRICT SC3**

Cloyce Kuhnert  
4 Cherrywood Square  
Canyon, TX 79015-2035  
(806) 655-7920  
ckuhnert@mail.wtamu.edu

## **CENTRAL**

### **DISTRICT C1**

Cathy Woebling-Paul  
11852 Gold Leaf Drive  
St. Louis, MO 63146-4813  
(314) 567-3281  
cpoboe@netscape.net

### **DISTRICT C2**

Charlotte Brown  
12578 Barkley St.  
Overland Park, KS 66209  
(913) 345-8999  
Charannbro@prodigy.net

## **NORTH CENTRAL**

### **DISTRICT NC1**

Director: TBA

### **DISTRICT NC2**

Narissa Bach  
5021 Oliver Ave S  
Minneapolis, MN 55419  
(612) 925-0056  
narissavabene@yahoo.com

### **DISTRICT NC3**

Joan Reist  
801 Driftwood Dr  
Lincoln, NE 68510-4319  
(402) 488-0718  
jreist@unl.edu

## **WEST CENTRAL**

### **DISTRICT WC1**

Director: TBA

### **DISTRICT WC2**

Marilyn Hitchcock  
2016 Joann Street  
Wichita, KS 67203-1111  
(316) 942-6607  
flutetutor@cox.net

## **PACIFIC NORTHWEST**

### **DISTRICT PNW1**

Sharon Straub  
206 W High St.  
Spokane, WA 99203-1521  
(509) 838-2144  
sstraub@soe.gonzaga.edu

### **DISTRICT PNW2**

Director: TBA

### **DISTRICT PNW3**

Dorothy Stewart  
1443 Southwood Ct SE  
Salem, OR 97306-9555  
(503) 364-3969  
dstewart854@msn.com

## **PACIFIC**

### **DISTRICT P1**

Lestelle Manley  
4812 Alexon Way  
Sacramento, CA 95841-4306  
(916) 485-0415  
ms5cents@myway.com

### **DISTRICT P2**

Kira Dixon  
2223 Foxworthy Ave.  
San Jose CA 95124  
kiwiberrie0527@yahoo.com  
(408) 439-6076

## **PACIFIC SOUTHWEST**

### **DISTRICT PSW1**

Jamie Caridi  
1541 Wedgewood Way  
Upland, CA 91786  
909-920-3698  
psw1dd@muphiepsilon.org

### **DISTRICT PSW2**

Ann Nicholson  
611 Forest Lake Dr  
Brea, CA 92821-2849  
(562) 694-4007

## **District Directors Still Needed**

There are still district director openings in five districts. Serving as a district director is a wonderful networking experience and an opportunity to inspire and be inspired by fellow members. If you live in one of these districts and would like to serve -- or nominate a member -- please contact President Fran Irwin (president@muphiepsilon.org).

# Directory of Executive Officers

## Mu Phi Epsilon Fraternity Officers

### 2003-2008 INTERNATIONAL EXECUTIVE BOARD

#### International President

**Dr. Frances Irwin**  
*Epsilon Upsilon*  
6464 Rhodes Avenue  
St. Louis, MO 63109-2849  
Tel: (314) 752-2585  
Fax: (314) 353-8388  
president@muphiepsilon.org

#### First Vice President, Extension Officer

**Dale D. Griffa**  
*Epsilon Mu*  
187 Flax Hill Road #B4  
Norwalk, CT 06854-2849  
Tel: (203) 838-6615  
extensionofficer@  
muphiepsilon.org

#### Second Vice President, Collegiate Advisor

**Dr. Martha MacDonald**  
*Phi Xi*  
8909 Wildridge Drive  
Austin, TX 78759-7355  
Tel: (512) 345-3399  
collegiateadvisor@  
muphiepsilon.org

#### Third Vice President, Alumni Advisor

**Dr. Kurt-Alexander Zeller**  
*Mu Chi*  
1872 Central Park Loop  
Morrow, GA 30260-1291  
Tel: (770) 961-4400  
alumniadvisor@  
muphiepsilon.org

#### Fourth Vice President,

**Music Advisor  
David Champion**  
*Gamma Sigma*  
229 15th Street  
Manhattan Beach, CA 90266  
Tel: (310) 545-3442  
musicadvisor@  
muphiepsilon.org

#### Fifth Vice President,

**Eligibility Advisor  
Sister Martha Steidl**  
*Gamma Psi*  
Woodland Inn  
St. Mary-of-the-Woods, IN  
47876-1099  
Tel: (812) 535-5230  
eligibilityadvisor@  
muphiepsilon.org

#### Editor

**Melissa Eddy**  
*Mu Theta*  
P.O. Box 10042  
Austin, TX 78766-1042  
Tel: (512) 342-2785  
editor@muphiepsilon.org

#### Executive Secretary- Treasurer

**Gloria Debatin**  
*Phi Chi*  
International Executive Office  
(IEO)  
4705 N. Sonora, Ste. 114  
Fresno, CA 93722-3947  
Tel: (559) 277-1898  
Fax: (559) 277-2825  
Toll Free: 1-888-259-1471  
executiveoffice@  
muphiepsilon.org

### HONORARY ADVISORY BOARD

#### Katherine Guldberg Doepke

*Phi Beta*  
8300 Golden Valley Rd. #329  
Golden Valley, MN 55427  
Tel: (763) 513-1352  
Katdoepke@usfamily.net

#### Wynona Wieting Lipsett

*Mu Chi*  
148 LCR Cedar B-1  
Mexia, TX 76667  
Tel: (254) 562-9397  
wyndon@nctv.com

#### Lee Clements Meyer

*Phi Xi*  
8101 Club Court Circle  
Austin, TX 78759  
Tel: (512) 345-5072

### INTERNATIONAL CHAIRMEN

#### ACME

**Carolyn (Lyn) Hoover**  
*Mu Pi*  
7618 SW 259th Street  
Vashon Island, WA 98070  
Tel: (206) 463-4605  
ACME@MuPhiEpsilon.org

#### Bylaws

**Catherine van der Salm**  
*Phi Lambda*  
3707 100th Circle  
Vancouver, WA 98686  
Tel: (360) 258-0387  
Cathjoy@aol.com

#### Finance

**Kirsten Forbes**  
*Beta Sigma*  
7755 S. Duquesne Way  
Aurora, CO 80016-1345  
Tel: (720) 870-2020  
Kirsten\_Forbes@msn.com

#### International

**Doris Braun**  
*Alpha Kappa*  
12897 Prospect  
Kansas City, MO 64146  
Tel: (816) 942-5533  
dorrislu@aol.com

#### Membership

**Verna Wagner**  
*Epsilon Iota*  
1114 W Rosewood Pl.,  
Spokane, WA 99208  
Tel: (509) 325-3641  
Vjwagner@visionsprings.net

#### Music Librarian & Archives

**Wendy Sistrunk**  
*Mu Mu*  
1504 S. Ash  
Independence, MO 64062  
Tel: (816) 836-9961  
sistrunkW@umkc.edu

#### SERV

**Annette Albright**  
*Theta*  
53 Elm Street  
Lake Placid, NY 12946  
Tel: (518) 523-3169

### Mu Phi Epsilon FOUNDATION BOARD

#### President, Lenita McCallum

*Phi Iota*  
933 Via Rincon  
Palos Verdes Estates, CA 90274  
Tel: (310) 375-8769  
Fax: (310) 375-9504  
lbandcb@cox.net

#### Vice President, Recording

**Secretary, Marcus Wyche**  
*Delta Delta*  
2729 Nicholson St., Apt. 103  
Hyattsville, MD 20782  
Tel: (H) (301) 484-3652  
(W) (202) 393-6342  
VideoAuth@aol.com

#### Treasurer, Sandra Wiese

*Zeta*  
9099 Regency Woods Dr.  
Kirtland, OH 44094  
Tel: (440) 256-5212  
slw.mpeft@gmail.com

#### Chairman, Foundation Board

**Nancy Rutherford Hawkins**  
*Mu Mu*  
1405A Lawrence Ave.  
Lawrence, KS 66049  
Tel: (785) 842-1731  
Fax: (785) 838-4682  
nhawkins@ku.edu

#### Vice Chairman, OPEN

#### Coordinator, International Artists Competition

**Beverly Hoch**  
3819 Monte Carlo Lane  
Denton, TX 76210-1413  
Tel: (940) 591-6782  
beverlyhoch@hotmail.com

#### International President

**Dr. Frances Irwin**  
Tel: (314) 752-2585  
president@muphiepsilon.org

#### Non-Board Scholarship Chairmen

**Marie Brown (Ginger) Curea**  
Tel: (310) 459-5150  
shogasan@msn.com

#### Dr. Jeffrey Hoover

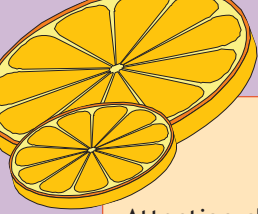
Tel: (309) 694-5113  
Fax: (309) 694-8505  
jhoover@icc.edu

#### Marilyn Sandness

Tel: (937) 434-2636  
Fax: (937) 434-8645  
sandness@erinet.com

#### Dr. Kristin Jonina Taylor

641-590-0547 (cell)  
kjtsonata@hotmail.com



# 2008 CONVENTION & MORE

## Convention Program Reserve Ad Space Now!

Attention chapters! Please consider purchasing an ad in the 2008 Convention program. It's an ideal way to honor special chapter members, remember those who've passed on, or just celebrate being part of Mu Phi Epsilon. If an ad isn't within your chapter's regular budget, consider asking members to sponsor one. An ad in the convention program will spotlight your chapter and also help support the convention financially.

For rates and details, contact advertising manager Jan Scott at [advertising@muphiepsilon.org](mailto:advertising@muphiepsilon.org).

## Donate Frequent Flyer Miles for Convention Travel



Do you have extra miles on your frequent flyer program that you don't need? Please consider donating them to Mu Phi Epsilon to help delegates travel to convention! Most programs now allow miles to be transferred to another person. If you have miles to donate, please contact the International Executive Office.

## Sponsor a Chapter to Attend Convention

Some of our smaller or newer chapters may need financial assistance to send their business delegate to convention. An alumni chapter (or even an individual member) could "adopt" a collegiate chapter by sponsoring its delegate's attendance. Don't know what chapter needs help? Contact IEO for a referral.

Convention 2008 Updates . . . . .page 6  
<http://muphiepsilon.org/Convention2008.htm>

## Violet Achievement Award



Alumni Chapters often recognize outstanding contributions of one of their members with the Violet Achievement Award. Has your alumni chapter considered honoring some special member in this way?

For more information on this chapter recognition award and to order a Violet Achievement pin contact the IEO at 1-888-259-1471.

## Members Medallion

This medallion is made to be worn at graduation and is suitable for fraternity functions. To order the medallion, call 1-800-478-3728 or email: [ken@kenjernigan.com](mailto:ken@kenjernigan.com).



## Advertising Opportunity

To advertise in The Triangle contact Jan Scott at 314-997-6262 or [advertise@muphiepsilon.org](mailto:advertise@muphiepsilon.org)

## USPS Statement of Ownership

Statement of Ownership, Management, and Circulation		This Statement Covers the Period	
Publication Title: <b>The Triangle of Mu Phi Epsilon</b>		<b>May 1, 2007</b>	
Issue Date: <b>05/01/2007</b>		Frequency: <b>Quarterly</b>	
Number of Issues Published Annually: <b>Four</b>		Annual Subscription Price: <b>\$6.</b>	
Yearly Subscription Price: <b>\$24</b>		Number of Copies of This Statement Prepared: <b>3,300</b>	
Total Copies: <b>3,300</b>		Total Copies of This Statement Distributed: <b>3,300</b>	
Copies of This Statement:		Copies of This Statement:	
1. Total Number of Copies (Net Press Run)	<b>13,800</b>	2. Total Number of Copies (Net Press Run)	<b>3,300</b>
3. Copies of Single Copies (Net Press Run)	<b>3,300</b>	4. Copies of Single Copies (Net Press Run)	<b>3,317</b>
5. Copies of Single Copies (Net Press Run)	<b>0</b>	6. Copies of Single Copies (Net Press Run)	<b>0</b>
7. Copies of Single Copies (Net Press Run)	<b>0</b>	8. Copies of Single Copies (Net Press Run)	<b>0</b>
9. Copies of Single Copies (Net Press Run)	<b>0</b>	10. Copies of Single Copies (Net Press Run)	<b>0</b>
11. Copies of Single Copies (Net Press Run)	<b>0</b>	12. Copies of Single Copies (Net Press Run)	<b>0</b>
13. Copies of Single Copies (Net Press Run)	<b>0</b>	14. Copies of Single Copies (Net Press Run)	<b>0</b>
15. Copies of Single Copies (Net Press Run)	<b>0</b>	16. Copies of Single Copies (Net Press Run)	<b>0</b>
17. Copies of Single Copies (Net Press Run)	<b>0</b>	18. Copies of Single Copies (Net Press Run)	<b>0</b>
19. Copies of Single Copies (Net Press Run)	<b>0</b>	20. Copies of Single Copies (Net Press Run)	<b>0</b>
21. Copies of Single Copies (Net Press Run)	<b>0</b>	22. Copies of Single Copies (Net Press Run)	<b>0</b>
23. Copies of Single Copies (Net Press Run)	<b>0</b>	24. Copies of Single Copies (Net Press Run)	<b>0</b>
25. Copies of Single Copies (Net Press Run)	<b>0</b>	26. Copies of Single Copies (Net Press Run)	<b>0</b>
27. Copies of Single Copies (Net Press Run)	<b>0</b>	28. Copies of Single Copies (Net Press Run)	<b>0</b>
29. Copies of Single Copies (Net Press Run)	<b>0</b>	30. Copies of Single Copies (Net Press Run)	<b>0</b>
31. Copies of Single Copies (Net Press Run)	<b>0</b>	32. Copies of Single Copies (Net Press Run)	<b>0</b>
33. Copies of Single Copies (Net Press Run)	<b>0</b>	34. Copies of Single Copies (Net Press Run)	<b>0</b>
35. Copies of Single Copies (Net Press Run)	<b>0</b>	36. Copies of Single Copies (Net Press Run)	<b>0</b>
37. Copies of Single Copies (Net Press Run)	<b>0</b>	38. Copies of Single Copies (Net Press Run)	<b>0</b>
39. Copies of Single Copies (Net Press Run)	<b>0</b>	40. Copies of Single Copies (Net Press Run)	<b>0</b>
41. Copies of Single Copies (Net Press Run)	<b>0</b>	42. Copies of Single Copies (Net Press Run)	<b>0</b>
43. Copies of Single Copies (Net Press Run)	<b>0</b>	44. Copies of Single Copies (Net Press Run)	<b>0</b>
45. Copies of Single Copies (Net Press Run)	<b>0</b>	46. Copies of Single Copies (Net Press Run)	<b>0</b>
47. Copies of Single Copies (Net Press Run)	<b>0</b>	48. Copies of Single Copies (Net Press Run)	<b>0</b>
49. Copies of Single Copies (Net Press Run)	<b>0</b>	50. Copies of Single Copies (Net Press Run)	<b>0</b>
51. Copies of Single Copies (Net Press Run)	<b>0</b>	52. Copies of Single Copies (Net Press Run)	<b>0</b>
53. Copies of Single Copies (Net Press Run)	<b>0</b>	54. Copies of Single Copies (Net Press Run)	<b>0</b>
55. Copies of Single Copies (Net Press Run)	<b>0</b>	56. Copies of Single Copies (Net Press Run)	<b>0</b>
57. Copies of Single Copies (Net Press Run)	<b>0</b>	58. Copies of Single Copies (Net Press Run)	<b>0</b>
59. Copies of Single Copies (Net Press Run)	<b>0</b>	60. Copies of Single Copies (Net Press Run)	<b>0</b>
61. Copies of Single Copies (Net Press Run)	<b>0</b>	62. Copies of Single Copies (Net Press Run)	<b>0</b>
63. Copies of Single Copies (Net Press Run)	<b>0</b>	64. Copies of Single Copies (Net Press Run)	<b>0</b>
65. Copies of Single Copies (Net Press Run)	<b>0</b>	66. Copies of Single Copies (Net Press Run)	<b>0</b>
67. Copies of Single Copies (Net Press Run)	<b>0</b>	68. Copies of Single Copies (Net Press Run)	<b>0</b>
69. Copies of Single Copies (Net Press Run)	<b>0</b>	70. Copies of Single Copies (Net Press Run)	<b>0</b>
71. Copies of Single Copies (Net Press Run)	<b>0</b>	72. Copies of Single Copies (Net Press Run)	<b>0</b>
73. Copies of Single Copies (Net Press Run)	<b>0</b>	74. Copies of Single Copies (Net Press Run)	<b>0</b>
75. Copies of Single Copies (Net Press Run)	<b>0</b>	76. Copies of Single Copies (Net Press Run)	<b>0</b>
77. Copies of Single Copies (Net Press Run)	<b>0</b>	78. Copies of Single Copies (Net Press Run)	<b>0</b>
79. Copies of Single Copies (Net Press Run)	<b>0</b>	80. Copies of Single Copies (Net Press Run)	<b>0</b>
81. Copies of Single Copies (Net Press Run)	<b>0</b>	82. Copies of Single Copies (Net Press Run)	<b>0</b>
83. Copies of Single Copies (Net Press Run)	<b>0</b>	84. Copies of Single Copies (Net Press Run)	<b>0</b>
85. Copies of Single Copies (Net Press Run)	<b>0</b>	86. Copies of Single Copies (Net Press Run)	<b>0</b>
87. Copies of Single Copies (Net Press Run)	<b>0</b>	88. Copies of Single Copies (Net Press Run)	<b>0</b>
89. Copies of Single Copies (Net Press Run)	<b>0</b>	90. Copies of Single Copies (Net Press Run)	<b>0</b>
91. Copies of Single Copies (Net Press Run)	<b>0</b>	92. Copies of Single Copies (Net Press Run)	<b>0</b>
93. Copies of Single Copies (Net Press Run)	<b>0</b>	94. Copies of Single Copies (Net Press Run)	<b>0</b>
95. Copies of Single Copies (Net Press Run)	<b>0</b>	96. Copies of Single Copies (Net Press Run)	<b>0</b>
97. Copies of Single Copies (Net Press Run)	<b>0</b>	98. Copies of Single Copies (Net Press Run)	<b>0</b>
99. Copies of Single Copies (Net Press Run)	<b>0</b>	100. Copies of Single Copies (Net Press Run)	<b>0</b>

Signature: **Alicia Robinson**, Executive Secretary-Treasurer/Publisher  
Date: **Sept. 28, 2007**

# Notice of Change of Address or Name

Click on Alumni Update Form at [www.MuPhiEpsilon.org](http://www.MuPhiEpsilon.org)



**Mu Phi Epsilon**  
International Executive Office  
4705 N. Sonora Ave., Suite 114  
Fresno, CA 93722-3947

[www.MuPhiEpsilon.org](http://www.MuPhiEpsilon.org)  
1-888-259-1471