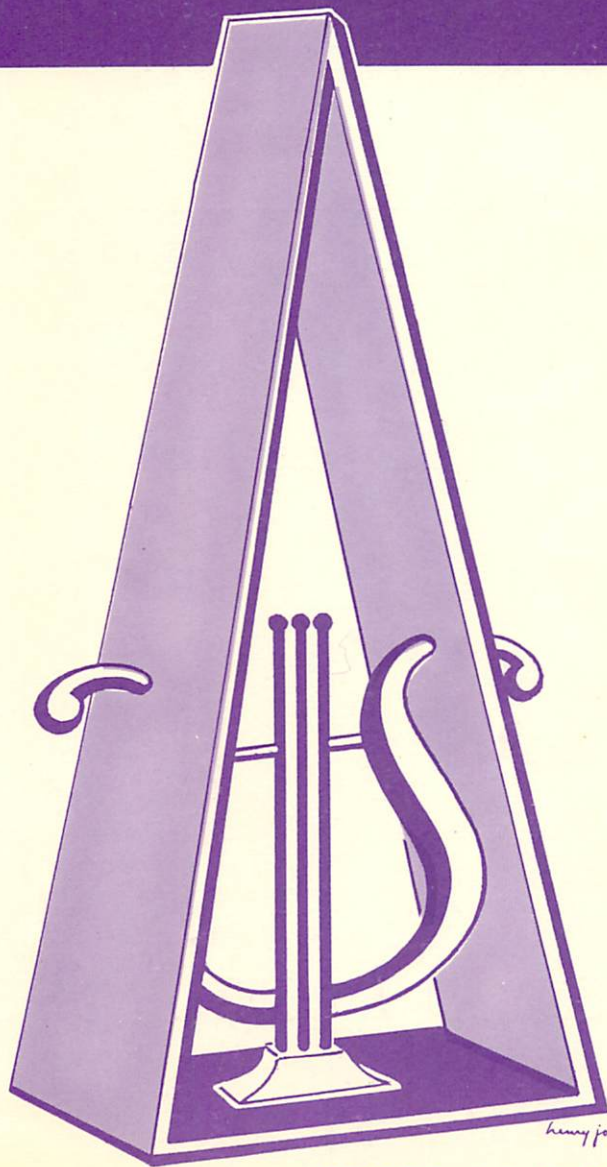


# Mu Phi Epsilon

*35<sup>th</sup> National Convention*



• JUNE 21-24 1960 •

THE MIRAMAR ♦ SANTA MONICA ♦ CALIFORNIA

*A Good Beginning  
Is the Safest Road to Success*

THIS MOTTO CAN BE APPLIED  
TO EVERY PHASE OF HUMAN ENDEAVOR,  
EVEN TO LIFE ITSELF

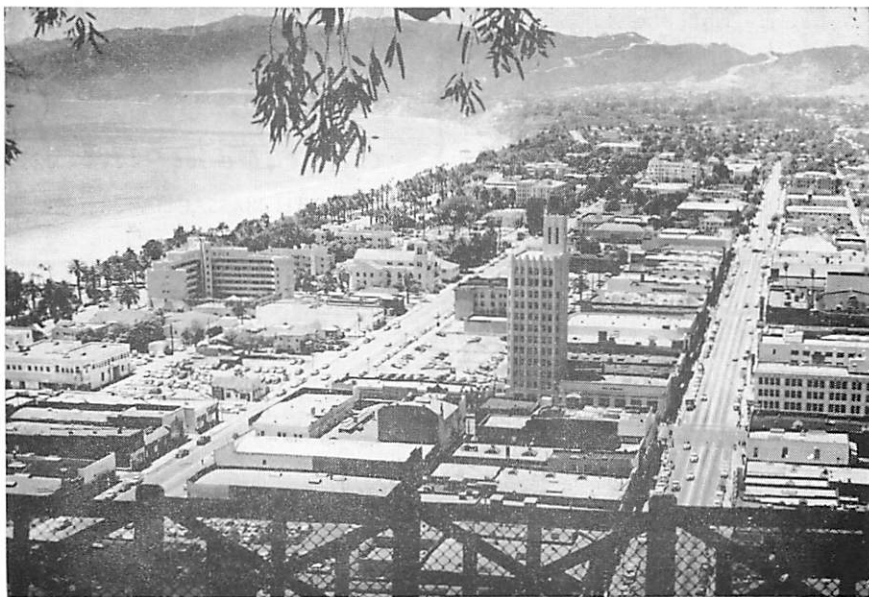
**BELWIN**

music publications

“Do Just That”

AVAILABLE AT ALL  
GOOD MUSIC STORES

*35th National Convention  
of  
Mu Phi Epsilon*  
NATIONAL MUSIC SORORITY



The Miramar—Santa Monica, Calif.

PACIFIC SOUTHWEST PROVINCE, Hostess

June 21-25, 1960

*"Pretty Neat"*  
**NOTEBOARDS**



sizes to fit  
pockets,  
purses, or  
notebooks

give  
New help for  
YOUR writing problems

designed—for you—Smooth, Durable,  
Colorful  
fits pocket or binder—Low, Flat, Firm  
holds papers—Tight Bite, No Chew

"ezvu" colors:  
ask your dealer or write  
aqua, beige,  
blue, coral,  
gray, green,  
ivory, peach,  
pink, yellow

**MAETON ASSOCIATES**  
7141 Potomac Street  
Riverside, California

WELCOME and BEST WISHES  
to  
MU PHI EPSILON

from the

*Miramar Hotel*

"Where the Crest of Good Living Begins"

In Beautiful Santa Monica—  
Overlooking the Blue Pacific...

*a Massaglia hotel*  
JOSEPH MASSAGLIA, JR., PRESIDENT



*Preeman's*

*Music*

*for*

*Everyone*

Mu Phi on our staff: Edith Kritner, Clara Benson, Esther Wiedower

*Morse M. Preeman*  
INCORPORATED

737 South Hill Street  
Los Angeles 55, Calif.



*“I believe in Music . . .”*

I believe in Music, the noblest of all the arts, a source of much that is good, just, and beautiful; in Friendship, marked by love, kindness, and sincerity; and in harmony, the essence of a true and happy life. I believe in the sacred bond of Sisterhood, loyal, generous, and self-sacrificing, and its strength shall ever guide me in the path that leads upward toward the stars.

—Ruth Jane  
Kirby,  
OMEGA



ROSALIE SPECIALE  
National President

*A Welcome*

from

National Council

and

Los Angeles Area chapters

to

Mu Phi Epsilon members, delegates and visitors, attending the 1960  
Convention in Pacific Southwest Province.

Together, we will develop the theme

"I BELIEVE IN MUSIC"

Each day will see its varied treatment through discussions,  
speakers, music, exhibits, and good fellowship  
By which we may more fully realize its enduring and  
unifying qualities now and always.



*National  
Officers*



ELOISE E. HILL  
First Vice President



GLORIAN BUTLER THOMAS  
Second Vice President



VIRGINIA PORTER FISER  
Executive Secretary-Treasurer



JANE HINKLE MCCLUGGAGE  
Third Vice President



RUTH HAVLIK  
Editor



HILDA HUMPHREYS  
Fifth Vice President



HELEN PURCELL MAXWELL  
Fourth Vice President

# *Hostesses*

## PACIFIC SOUTHWEST PROVINCE CHAPTERS

MU ETA College of the Pacific, Stockton	ALBUQUERQUE, New Mexico Alumnae chapter
MU NU University of Southern California, Los Angeles	BERKELEY Alumnae chapter
PHI MU San Jose State College, San Jose	BEVERLY HILLS Alumnae chapter
PHI NU University of California at Los Angeles, Los Angeles	FRESNO Alumnae chapter
PHI CHI Fresno State College, Fresno	LONG BEACH Alumnae chapter
EPSILON ETA George Pepperdine College, Los Angeles	LOS ANGELES Alumnae chapter
EPSILON OMEGA San Francisco State College, San Francisco	PALO ALTO Alumnae chapter
ALPHA DELTA Sacramento State College, Sacramento	PASADENA Alumnae chapter
ALPHA EPSILON College of the Holy Names, Oakland	SACRAMENTO Alumnae chapter
	SAN DIEGO Alumnae chapter
	SAN FERNANDO VALLEY Alumnae chapter
	SAN FRANCISCO Alumnae chapter
	SAN JOSE Alumnae chapter
	STOCKTON Alumnae chapter





MARTHA DAY  
General Chairman

Assistant chairman—Esther Wiedower  
Treasurer—Clara Benson  
Assistant treasurer—Darleen Evers  
Hospitality—Marion Smale  
Housing—Lucille Tackley  
Invitations—Annina Mueller  
Local Arrangements—Vivian Page Johnson  
Exhibits—Georgeanna Whistler  
Flowers—Ione Birdsall, Emma Stone  
Meal Tickets—Darleen Evers  
Music—Harriet Payne  
Printing—Esther Wiedower  
Publicity—Carolyn Gorka  
Photography—Brena Hazzard

Seated, left to right: Martha Day, Harriet Payne, Esther Wiedower

Standing, left to right: Esther Funk, Vivian Page Johnson, Annina Mueller, Edna Glassbrook, Lucille Tackley, Marion Smale, Carolyn Coe Gorka

*Local*

*Committee*

*Chairmen*

Registration—Edna Glassbrook, Leola Blair  
Transportation—Janet Green

#### SPECIAL ASSIGNMENTS

Pre- and Post-Convention—Esther Funk  
Collegiate Beach Party—Patricia Haglund  
Service Committee—Marjorie Hilliker,  
Jeanne Moore, Aliene Reed, Sima Mannick  
Ushers—Phi Nu and Mu Nu chapters  
Friendship Corner—Verna Rae Harkey  
Advertising—Vola Gribble  
Model Initiation—Marie Curea  
Banquet—Emily Sullivan



# Convention Committees, 1960

**Parliamentarian:** Bernice Austin Huestis, San Diego alumnae

## Rules of Order and Order of Business

Adviser: National President  
Chairman: Salt Lake City alumnae  
Members: Phi Iota, Mu Chi

## Credentials

Adviser: National Executive Secretary-Treasurer  
Chairman: Los Angeles alumnae  
Members: Registration committee of Pacific Southwest Province convention

## Courtesy

Adviser: National Third Vice President  
Chairman: Milwaukee alumnae  
Members: Alpha Lambda, Alpha Kappa, Alpha Theta, Epsilon Sigma, Mu Kappa, Phi Theta, Mu Phi; Oklahoma City, Atlanta, and Portland alumnae

## Ritual

Adviser: National President  
Members: Phi Nu, San Diego alumnae

## Scrapbooks

Adviser: National Fourth Vice President  
Chairman: Spokane alumnae  
Members: Alpha Eta, Alpha Iota, Epsilon Omega, Epsilon Xi, Mu Mu, Mu Alpha, Alpha Delta; Kansas City Evening, and Fort Worth alumnae

## Chapter Reports

Adviser: National Fifth Vice President  
Chairman: Seattle alumnae  
Members: Alpha Zeta, Alpha Epsilon, Mu Zeta, Epsilon Phi, Epsilon Lambda, Mu Gamma, Alpha Gamma; Albuquerque, Jackson, Cedar Rapids, and Des Moines alumnae

## Finance

Advisers: National Finance chairman and National Executive Secretary-Treasurer  
Chairman: New York alumnae  
Members: Epsilon Iota, Mu Xi, Epsilon Omicron, Mu Pi, Epsilon Kappa, Epsilon Zeta, Phi Zeta; Columbia, Evansville, Ann Arbor, Evanston-North Shore, and Austin alumnae

## Resolutions

Adviser: National First Vice President  
Chairman: Cleveland alumnae  
Members: Alpha Alpha, Phi Pi, Phi Sigma, Phi Chi; Berkeley, Chicago, Cincinnati, and Indianapolis alumnae

## Wardens

Mu Rho—Nu; Phi Epsilon—Mu Epsilon; Epsilon Gamma—Kappa; Phi—Epsilon Iota

## Tellers

Epsilon—Great Lakes province; Xi—South Central province; Richfield alumnae—North Central province; Mu Upsilon—Atlantic province; Columbus alumnae—East Central province; Long Beach alumnae—Pacific Southwest province; Tacoma alumnae—Pacific Northwest province

## *Convention in Brief*

<b>Monday</b> <b>June 20</b>	11:00- 1:30	A.M.	
	4:00- 6:00	P. M.	Preconvention registration Satellite foyer
	7:00- 9:00		
	2:00		Sightseeing tour leaves hotel
	6:30		Collegiate beach party
	8:30		Alumnae picture parade: Mu Phi in Europe, Frances Robinson
<b>Tuesday</b> <b>June 21</b>	7:00- 8:30	A.M.	Registration Satellite foyer
	9:00-12:00		Business session Nautilus room
	12:30	P. M.	Luncheon West Satellite room
	2:15- 3:30		Panel on professional opportunities Nautilus room
	3:45- 4:15		Memorial service Nautilus room
	4:30- 5:00		Province meetings
	7:00		Honors dinner West Satellite room
			National Council reception following dinner
<b>Wednesday</b> <b>June 22</b>	8:00- 9:00	A.M.	Instruction period Nautilus room
	9:00-12:00		Business session Nautilus room
	12:30	P. M.	Luncheon West Satellite room
	2:15- 3:15		Recital East Satellite room
	3:30- 5:00		Discussion period
	6:00		Dinner West Satellite room
	8:00 and 8:15		Buses leave hotel for UCLA
	8:45		Collegiate concert Schoenberg Hall, UCLA
<b>Thursday</b> <b>June 23</b>	8:00- 9:00	A.M.	Instruction period Nautilus room
	9:00-12:00		Business session Nautilus room
	12:30	P. M.	Luncheon West Satellite room
	2:30		Buses leave hotel for USC
	3:30- 5:00		The Convention Sings Founders Hall 133, USC
	5:00- 5:45		District meetings Founders Hall 133 and 129
	6:30		Dinner Town and Gown, USC
	8:30		Alumnae concert. Hancock auditorium, USC
<b>Friday</b> <b>June 24</b>	8:00- 9:00	A.M.	Instruction period Nautilus room
	9:00-12:00		Business session Nautilus room
	12:30	P. M.	Luncheon Patio
	2:15- 3:15		Expanding Musicianship at the Keyboard Nautilus room
	3:30- 4:15		Model pledging and initiation Aviation room
		7:30	
<b>Saturday</b> <b>June 25</b>	7:30- 9:00	A.M.	Voting Nautilus room
	9:00		Closing session Nautilus room
			Post convention tours

## *Pre-Convention Events*

<b>Monday</b> <b>June 20</b>	2:00	P.M.	Sightseeing tour leaves hotel, Second Street entrance
	6:30	P.M.	Collegiate beach party
	8:30	P.M.	Alumnae picture parade: Mu Phi in Europe—Frances Robinson

**TUESDAY**  
**June 21**

*Today*

7:00- 8:30 A.M. **REGISTRATION** Satellite foyer

9:00-12:00 A.M. **BUSINESS SESSION** Nautilus room

**OPENING CEREMONY**

Convention Invocation . . . . Louise St. John Westervelt, Mu Iota  
Charlotte Brown, Los Angeles alumnae, Convention Chaplain  
Invocation . . . . . Amy Worth, Seattle Alumnae

**ROLL CALL**

**OPENING ADDRESS** . . . . Rosalie V. Speciale, National President

**REPORTS OF NATIONAL OFFICERS AND CHAIRMEN**

12:30 P. M. **LUNCHEON** West Satellite room

**Welcome to the Golden State**

Hostesses: Beverly Hills alumnae, Mu Nu, Phi Nu  
Toastmistress: Thyra Snyder, Beverly Hills alumnae  
Invocation  
Welcome to Santa Monica . . . . . The Hon. Ben Bernard, Mayor  
Double Violin Concerto . . . . . Bach  
Linn Higbee      Roberta Hackman  
Phi Nu  
'Tis Liberty (Judas Maccabaeus) . . . . . Handel  
Von Ewiger Liebe . . . . . Brahms  
Keen (Six Millay Songs) . . . . . Halsey Stevens  
Emily McKnight, Mu Nu

2:15- 3:30 P.M. **PANEL DISCUSSION: Professional Opportunities** Nautilus room

Julie Howell Overshiner, Moderator  
Dr. Pauline Alderman, Musicologist, University of Southern California  
Anita Priest, Assistant Professor of Music, Los Angeles City College, and  
Organist, Los Angeles Philharmonic Orchestra  
Joan Meggett, Music Librarian, University of Southern California  
Edith Kritner, Educational Consultant, Morse M. Preeman, Inc.

3:45- 4:15 P.M. **MEMORIAL SERVICE:** San Diego alumnae Nautilus room

Reader: Bertha King Van Tilburg, Past National President

Chaplain: Mary Caldwell

Province representatives

Anna Belle Snyder, Alpha Theta, Atlantic  
Magda-Lynn Kachmar, Phi Omicron, Great Lakes  
Margaret Ann Goldsby, Alpha Mu, East Central  
Sharon Ferguson, Phi Iota, North Central  
Brenda McNeiland, Alpha Nu, South Central  
Dawn Williams, Alpha Lambda, Pacific Northwest  
Marie Papendick, Alpha Epsilon, Pacific Southwest

Lift Thine Eyes . . . . . Mendelssohn

Lord's Prayer . . . . . Josephine Forsythe, Tau Alpha (deceased)

Trio: Thyra Snyder, Jeanne Roodhouse, Carol Aldrich

Violin: Georgeanna Whistler Piano: Betty Piper

4:30- 5:00 P.M. **PROVINCE MEETINGS**—Election of nominating committee

7:00 **HONORS DINNER** West Satellite room

**Musicianship and Scholarship: Past, Present, and Future**

Hostesses: San Francisco and Berkeley alumnae, Epsilon Omega, Alpha Epsilon

Toastmistress: Symeta Kuper, Berkeley alumnae

Invocation: Ellen Darien Heider, San Francisco alumnae

Our 45-Year Members

Presentation of Awards

Sonata for Violoncello and Piano, Op. 6 . . . . . Samuel Barber  
Allegro ma non troppo  
Adagio, Presto  
Allegro appassionato

Joanna DeKeyser, cellist Marilyn Neeley, pianist  
Mu Nu

Nocturne, C# minor, Op 27, No. 1 . . . . . Chopin

Scherzo, E Major, Op. 54 . . . . . Chopin  
Marilyn Neeley, Mu Nu

**RECEPTION FOR NATIONAL COUNCIL**

## Spotlight . . .



MARGERY MacKAY

A native of New Hampshire, Margery has concertized throughout the country. She has sung with Los Angeles Civic Light Opera, New York City Center Opera, Ojai Festival (where Aaron Copland was her accompanist) and the Bach Festival at Carmel.



DOROTHY BISHOP

is an associate professor of music at USC. She has demonstrated class piano methods for national and regional conventions of MENC and for the St. Louis convention of MTNA. Dorothy conducted a piano teaching workshop at Teacher's College, Columbia University, and has been piano chairman of the Western division of MENC for the past six years.



ROYAL STANTON

Mr. Stanton is chairman of the music department at Long Beach City College, and minister of music at the First Congregational Church, Los Angeles. He has had 30 compositions or arrangements published, and has taken graduate courses in conducting with Robert Shaw and Julius Herford.

# Today

WEDNESDAY  
June 22

8:00- 9:00 A.M. **INSTRUCTION PERIOD**—required of all business delegates Nautilus room  
Eloise E. Hill, National First Vice President  
Glorian Butler Thomas, National Second Vice President  
Jane Hinkle McCluggage, National Third Vice President

9:00-10:15 A.M. **BUSINESS SESSION** Nautilus room

10:15-10:30 A.M. Recess

10:30-12:00 A.M. **BUDGET SESSION:** Eleanor Hale Wilson, National Finance Chairman

12:30 P.M. **LUNCHEON** West Satellite room

## Parade of Music and Roses

Hostesses: Pasadena and Albuquerque alumnae

Toastmistress: Helena Redewill, Pasadena alumnae

Invocation: A Choral Prayer—Pasadena alumnae quartet

Meine liebe ist gruen . . . . . Brahms

Sapphic Ode . . . . . Brahms

My Friend . . . . . Malotte

Common Bill . . . . . Bacon

Red Rosey Rush . . . . . Young

I'm in Love with Vienna . . . . . Strauss

Lee Madsen, Pasadena alumnae  
Grace Rowell Male, accompanist

Benediction . . . . . Grace Wilkins, Pasadena alumnae  
Pasadena alumnae quartet

## RECITAL

2:15- 3:15 **MUSICAL MOSAICS FROM SPAIN**

East Satellite room Arias from Carmen . . . . . Georges Bizet  
Habanera  
Seguidilla  
Card Aria  
Gypsy Song

Saeta . . . . . Joaquin Turina

Canzone del Velo (Don Carlo) . . . . . Giuseppe Verdi

Seguedilla . . . . . Manuel de Falla

MARGERY MACKAY, mezzo soprano  
Harper MacKay, piano

Sonata for Violin and Piano . . . . . Shirley Munger  
(Honorable Mention, Division III, Class B, 1959 Original Composition Contest)

NORMA LEE MADSEN, violin  
SHIRLEY MUNGER, piano

Sonata for Piano . . . . . Elizabeth Gould  
(Winner Division I, Class B, 1959 Original Composition Contest)

JUNÉ LUSK, pianist

## THE MEZZO'S DILEMMA

Faites-lui mes aveux (Faust) . . . . . Charles Gounod

Connais-tu le pays? (Mignon) . . . . . Ambroise Thomas

Non so piu cosa son (Nozze di Figaro) . . . . . W. A. Mozart

Octavian's Reply (Der Rosenkavalier) . . . . . Richard Strauss

Composer's Aria (Ariadne auf Naxos) . . . . . Richard Strauss

MARGERY MACKAY, mezzo soprano  
Harper MacKay, piano

3:30- 5:00 P.M. **DISCUSSION PERIOD** Nautilus room

Collegiate chapters on competitive campuses

Collegiate chapters on non-competitive campuses

Alumnae chapters with membership of more than 35

Alumnae chapters with membership of fewer than 35

6:00 **DINNER** West Satellite room

## Northern Lights

Hostesses: Palo Alto and San Jose alumnae, Phi Mu

Toastmistress: Dr. Violet Thomas, San Jose alumnae

Invocation: Marjorie Sherman, Palo Alto alumnae

Enough . . . . . Esther Cooper

An Inscription by the Sea . . . . . Jean Margaret DiLorenzo

Fog . . . . . Roy Harris

Love Went a-Riding . . . . . Frank Bridge

Io sono l'umile ancella (Adriana Lecouvreur) . . . . . Cilea

CLORINDA DiLONARDO, San Jose Alumnae, soprano  
Jean Margaret DiLorenzo, accompanist

The Contribution Educational Television Is Beginning To Make in  
Our American Culture

DR. RUDY BRETZ,  
Head, Educational Television, Department of Visual Communication, UCLA

8:00 and 8:15 P.M. Buses leave Second Street entrance for UCLA

8:45 P.M. **COLLEGIATE CONCERT** Schoenberg Hall, UCLA



# Collegiate Concert

Wednesday, June 22, 1960, 8:45 P.M., Schoenberg Hall, UCLA

- Le Rosier . . . . . Rousseau
- Waldesgesprach . . . . . Schumann
- Poveri fiori (Adriana Lecouvreur) . . . . . Cilea
- O Lovely World . . . . . Charles  
Glenda Parker, soprano      Phi Mu, San Jose
- Concerto in B Flat for Bassoon: La Notte . . . . . Vivaldi  
Introduction—Largo, Andante Molto  
"I Fantasmii"—Presto  
"Il Sonno"—Andante Molto  
"Sorge l'Aurora"—Allegro  
Penny Lorenz      Epsilon Omega, San Francisco  
Susan Wolfson, accompanist, Epsilon Omega
- Vergin, Tutto Amor . . . . . Durante
- Voi Che Sapete (Marriage of Figaro) . . . . . Mozart
- Floods of Spring . . . . . Rachmaninoff  
Sue DiJerlando, soprano      Epsilon Eta, Los Angeles  
Josephine Gottschalk, accompanist
- Ah, fors e lui (La Traviata) . . . . . Verdi
- Gretchen am Spinnrade . . . . . Schubert  
Therese Miller, soprano      Alpha Epsilon, Oakland  
Josephine Gottschalk, accompanist
- Sonatine pour le Piano . . . . . Ravel  
Modere  
Anime  
Dora McConnell      Phi Chi, Fresno
- Symphony in Yellow . . . . . Griffes
- In dem Schatten meiner Locken . . . . . Wolfe
- Voi lo Sapete (Cavalleria Rusticana) . . . . . Mascagni  
Hildegarde Sabrowsky, soprano      Mu Eta, Stockton  
Cynthia Lindhe, accompanist
- Die Nachtigall . . . . . Alban Berg
- Im Zimmer . . . . . Alban Berg
- L'amero (Arie des Aminta, aus Il Re Pastore) . . . . . Mozart  
Alice Field, soprano      Phi Nu, Los Angeles  
Linn Higbee, violin      Alice Williams, piano
- Suite, Op. 14 . . . . . Bartok  
Allegro  
Scherzo  
Allegro molto  
Sostenuto  
Sharon Davis, pianist      Mu Nu, Los Angeles
- Un bel di (Madama Butterfly) . . . . . Puccini
- Tell Me, Thyrsis . . . . . Nordoff
- There Shall Be More Joy . . . . . Nordoff  
Mary Ann Huffman, soprano      Alpha Delta, Sacramento  
Josephine Gottschalk, accompanist

THURSDAY  
June 23

# Today

8:00- 9:00 A.M. **INSTRUCTION PERIOD**—required of all business delegates Nautilus room  
Helen Purcell Maxwell, National Fourth Vice President  
Ruth Havlik, National Editor

9:00-10:15 A.M. **BUSINESS SESSION** Nautilus room

10:15-10:30 Recess

10:30-12:00 A.M. **COLLEGIATE PANEL:** Hilda Humphreys, moderator Nautilus room  
Membership—How To Gain, Train, and Maintain It

10:30-11:30 A.M. **ALUMNAE PANEL:** Jane Hinkle McCluggage, moderator Aviation room

12:30 P.M. **LUNCHEON** West Satellite room

## The Gold Rush

Hostesses: Sacramento and Stockton alumnae, Alpha Delta, Mu Eta

Toastmistress: Dorothy Sandelius, Stockton alumnae

Psalm 100—Marjorie Lawrence, Sacramento alumnae

Ain't It a Pretty Night (Susanna) . . . . . Carlyle Floyd

Trees on the Mountain (Susanna) . . . . . Carlyle Floyd

Three Short Songs . . . . . Soule

Marching Song

Where Go the Boats

The Swing

Betty Kirkpatrick, soprano  
Cynthia Lindhe, accompanist

2:30 P.M. Buses leave Second Street entrance for USC

3:00- 5:00 P.M. **THE CONVENTION SINGS:** Royal Stanton, director Founders Hall 133

I Hear a Harp . . . . . Brahms

Ye Fields of Light, Celestial Plains . . . . . Johann Franck

We Hasten with Eager but Faltering Footsteps . . . . . Bach

Anita Priest, piano  
Carolyn Funk, cello John Wunderlich, horn

5:00- 5:45 P.M. **DISTRICT MEETINGS** Founders Hall, 133 and 129

6:30 P.M. **DINNER** Town and Gown, USC

## Saludas Amigas

Hostesses: Long Beach and San Diego alumnae, Epsilon Eta

Toastmistress: Charlotte Stevenson, Long Beach alumnae

Invocation: Choral Grace . . . . . Long Beach alumnae trio

Keltic Sonata, Op. 59, #4, Second Movement . . . . . MacDowell

Mystic Sonnet—To a Tree in Bloom . . . . . Virtue

A Butterfly . . . . . Virtue

Money Musk—A Country Dance Tune . . . . . Sowerby

Constance Virtue, pianist San Diego alumnae

Meet Mu Phi Epsilon

8:30 P.M. **ALUMNAE CONCERT** Hancock auditorium, USC

# Alumnae Concert

Thursday, June 23, 1960 8:30 P.M. Hancock Auditorium, USC

Third Suite in C Major . . . . . J. S. Bach

Prelude  
Allemande  
Sarabande  
Bourrees I and II

Harriett Westling Shank, cellist Seattle alumnae

When I Am Laid in Earth (Dido and Aeneas) . . . . . Purcell

D'amor Sull'ali Rosee (Il Trovatore) . . . . . Verdi

Sola, Perduta, Abbandonata (Manon Lescaut) . . . . . Puccini

Nadine Salonites, soprano Sacramento alumnae

Josephine Gottschalk, accompanist

Ballade . . . . . Poenitz

Maestoso  
Lento  
Vivace con fuoco

Lois Adele Craft, harpist Los Angeles alumnae

Intermezzo, Op. 117, No. 2 . . . . . Brahms

Rhapsody, Op. 79, No. 1 . . . . . Brahms

Joanne Baker, pianist Kansas City alumnae

Lieder eines Fahrenden Gesellen . . . . . Mahler

Margaret Thuenemann, contralto Cincinnati alumnae

Betty Hoensch, accompanist Cincinnati alumnae

Sonata for Violin and Piano . . . . . Jurrian Andriessen

Allegro molto  
Molto lento  
Allegro

Violin: Norma Lee Madsen, Salt Lake City alumnae

Piano: Shirley Munger

FRIDAY  
June 24

## Today

8:00- 9:00 A.M. **INSTRUCTION PERIOD**—required of all collegiate delegates

Nautilus room

Virginia Porter Fiser, National Executive Secretary-Treasurer

9:00-10:15 A.M. **NATIONAL PROJECTS**

**Music Therapy:** Viola Anderson, National Chairman, presiding

The Place of Music Therapy in Education—Wilhelmina Harbert, Stockton alumnae; Professor Emeritus of Public School Music and Music Therapy, College of the Pacific, Stockton, Calif.; National First Vice President, National Association of Music Therapy

Reports of Therapy Activities of West Coast chapters

10:15-10:30 A.M. Recess

10:30-12:00 A.M. **Magazine Subscriptions in Action:** Helen Ramage, Detroit alumnae presiding

**International Music Relations:** Silliman University—Its Sight and Sounds

12:30 P. M. **FASHION LUNCHEON** Patio

**Bon Voyage**

Hostesses: San Fernando and Fresno alumnae, Phi Chi

Toastmistress: Mary Anna Essel, San Fernando alumnae

Invocation: Old Hundredth Psalm tune, sung in unison

Fashions by Julie Ann's Specialty Shop, 12162 Ventura Blvd., Studio City and Lala's Originals, 10212 Riverside Drive, Toluca Lake

Sarah Glas commentator Helen Riley, organist

Baldwin Organ through the courtesy of the Baldwin Piano Company

2:15- 3:15 P. M. **EXPANDING MUSICIANSHIP AT THE KEYBOARD:** Dorothy Bishop  
Nautilus room

3:30- 4:15 P. M. **MODEL PLEDGE AND INITIATION CEREMONIES:** Phi Nu chapter  
Aviation room

7:30 P. M. **BANQUET** Satellite room

# Spotlight . . .



MURIEL KERR

During the 1960-61 season Miss Kerr will appear as soloist with the Los Angeles Philharmonic Orchestra. She was on the piano faculty at Juilliard for eight years, and has appeared with orchestras in Philadelphia, Chicago, St. Louis, Canada, and Europe. Since 1955 she has been a member of the piano faculty at University of Southern California.



GEORGE KUYPER

Mr. Kuyper's AB degree is from Rutgers, his MA from Harvard. He had a teaching fellowship at New York University and has been a professor of English literature at the University of Michigan. He is a member of Phi Beta Kappa. Mr. Kuyper became General Director of the Southern California Symphony Association after many years experience as business manager of the Boston and Chicago symphony orchestras.

# Banquet

Friday, June 24, 1960 7:30 P.M. Satellite Room, The Miramar

Hostesses: Los Angeles alumnae

Toastmistress: Annina Mueller, Los Angeles alumnae

A Grace . . . . . Gladys Rich, Los Angeles alumnae  
(written especially for this occasion)

Margery MacKay, mezzo soprano

"I Believe in Music" . . . . . George Kuyper, General Director,  
Southern California Symphony Association

## CONCERT

Three anniversary composers of the 1959-60 season

Prelude and Fugue in E minor . . . . . Mendelssohn

Arabeske, Op 18 . . . . . Schumann

Novellette in F# minor, Op. 21 . . . . . Schumann

Andante Spianato and Polonaise, Op. 22 . . . . . Chopin

Muriel Kerr, pianist

Steinway piano

SATURDAY  
June 25

*Today*

7:30- 9:00 A.M. **Voting** Nautilus room

9:00 **CLOSING SESSION** Nautilus room

Installation of National Officers

Closing Ceremony

*Post-Convention Event*

1:00- 8:00 P. M. Disneyland—4 hours in the Magic Kingdom

Buses leave hotel from Second Street entrance





# *Music Delegates*

## COLLEGIATE

Mu Eta: Hildegard Sabrowsky, soprano

Mu Nu: Sharon Davis, piano

Phi Mu: Glenda Parker, soprano

Phi Nu: Alice Field, soprano

Phi Chi: Dora McConnell, piano

Epsilon Eta: Sue DiJerlando, soprano

Epsilon Omega: Penny Lorenz, bassoon

Alpha Delta: Mary Ann Huffman, soprano

Alpha Epsilon: Therese Miller, soprano

## ALUMNAE

Cincinnati: Margaret Thueneman, contralto

Kansas City: Joanne Johnson Baker, piano

Los Angeles: Lois Adele Craft, harp

Sacramento: Nadine Salonites, soprano

Salt Lake City: Norma Lee Madsen, violin

Seattle: Harriet Westling Shank, cello

## *Business Delegates*

### ATLANTIC PROVINCE

Beta—Sandra Lee Robertson  
Mu—Pearl McArthur  
Psi—Mary Ann Topper  
Mu Upsilon—Sally Counts  
Phi Gamma—Janet Rayburn  
Phi Upsilon—Margaret Barstow  
Phi Psi—Claire L. Wilkinson  
Phi Omega—Sandra Myers  
Epsilon Nu—Janice Holt Fowler  
Epsilon Upsilon—Juanita Martino  
Epsilon Psi—Lois Woolman  
Alpha Beta—Mary Ann Sidor  
Alpha Zeta—Martha Simmons  
Alpha Eta—Jo-Ann Romano  
Alpha Theta—Anna Belle Snyder  
Atlanta—Willa B. Lowrance  
Baltimore—Bernice K. Spratler  
Boston—Stella R. Levenson  
Connecticut Valley—Rose Mende  
Miami—Rosalind Wallach  
New York—Bettylou Scandling  
Philadelphia—Adelia A. Cubbon  
Pittsburgh—Barbara M. Rankin  
Rochester—Adelaide Waring  
Washington—Shirley Schleter

### GREAT LAKES PROVINCE

Gamma—Anne Emley  
Epsilon—Janet Kimble  
Sigma—Dolores Normann  
Phi—Diane Frankson  
Mu Xi—Oksana Lishchynsky  
Mu Phi—Sally Jo Stout  
Phi Kappa—Elizabeth Barnes  
Phi Omicron—Magda-Lynn Kachmar  
Phi Sigma—Sandra Sinkler

Epsilon Lambda—Eleanor M. Hassenzahl

Epsilon Xi—Georgeann Shive  
Ann Arbor—Lucy Selden Miller  
Central Chicago—Marjorie Hunter  
Chicago—Eugenia Wright Anderson  
Cleveland—Evelyn Treger Morgan  
Cleveland Heights—Sylvia Gatwood  
Detroit—Ellen Jones  
Evanston-North Shore—Mary Carter Jenkins  
Milwaukee—Eunice Groth  
Toledo—Florence Miller  
Urbana-Champaign—Rachel Elliott

### EAST CENTRAL PROVINCE

Zeta—Sara Mae Copeland  
Kappa—Annette E. Hay  
Mu Pi—Toby Jayne Spradling  
Phi Theta—Nancy Ordelheide  
Epsilon Gamma—Adelaide Steele  
Epsilon Zeta—Frances Henley  
Epsilon Kappa—Beverly Ann Holmes  
Epsilon Omicron—Julia Diana Ragains  
Epsilon Tau—Andrea Grisevich  
Alpha Alpha—Sondra Showalter  
Alpha Gamma—Janet Hardy  
Alpha Kappa—Joedy Meiers  
Alpha Mu—Margaret Ann Goldsby  
Cincinnati—Roma Carpenter  
Columbia—Irma Wheelock  
Columbus—Hazel George Cheney  
Dayton—Edythe Livingston  
Evansville—Claudia Hyde  
Indianapolis—Rachel L. Boothroyd  
Jackson—Sarastelle Jones Sigrest  
Kansas City—Irene Haynes Sees  
Kansas City Evening—Anita Strumillo  
St. Louis—Dorothy Dring Smutz  
St. Louis County—Doris Diephouse

## NORTH CENTRAL PROVINCE

Omega—JoAnn Moore  
Mu Alpha—Jean Pickard  
Mu Gamma—Ann Olson  
Mu Epsilon—Mary Helen Schmidt  
Mu Tau—Sharon Parker  
Mu Psi—Jennie Catherine Curtis  
Phi Zeta—Sharon Kruger  
Phi Iota—Sharon Ferguson  
Cedar Rapids—Mardean Joyce Holveck  
Des Moines—Frances Wellman  
Fargo—Viola Anderson  
Lincoln—Irene Barber  
Minneapolis—Marjean Carr Postlethwaite  
Richfield—Aldys Nelson

## SOUTH CENTRAL PROVINCE

Xi—Diane Hoisington  
Mu Theta—Mary K. Olson  
Mu Kappa—Beth Gambill  
Mu Mu—Betty Jean King  
Mu Rho—Jan Marie Cumbie  
Mu Chi—Lou Anna Hurt  
Phi Epsilon—Anne Bollinger  
Phi Xi—Jo-Ann Godec  
Phi Pi—Marlene Dirks  
Phi Tau—Virginia Rice  
Epsilon Epsilon—Betty Lumpkin  
Epsilon Mu—Doralee Durham  
Epsilon Pi—Susan M. Dixon  
Epsilon Phi—Leora Harner  
Alpha Iota—Anne Armour  
Alpha Nu—Judy Haddon  
Austin—Barbara Bracht Brazil  
Dallas—Patricia Crenshaw  
Denver—Evelyn J. Molzahn  
Fort Worth—Loretta Montgomery  
Oklahoma City—Joy Nethery  
Salt Lake City—Shirley Lindford  
Tulsa—Arleta Monahan  
Wichita—Mary Frances Gresham

## PACIFIC NORTHWEST PROVINCE

Nu—Nina Evelyn Sackett  
Tau—Marilyn Gay Abdnor  
Mu Beta—Beverly Kirkwood  
Mu Zeta—Sharon Zlatnik  
Phi Lambda—Elizabeth Laird  
Epsilon Delta—Linda Bruno  
Epsilon Theta—Lois Allen  
Epsilon Iota—Janice Morris  
Epsilon Rho—Lorraine Norma Peterson  
Epsilon Sigma—Gwendolyn Thomas  
Alpha Lambda—Dawn Williams  
Eugene—Margaret Kitts  
Portland—Nellie Tholen  
Salem—Myra Brand  
Seattle—Billie Jones  
Spokane—Irmingard Crowder  
Tacoma—Dorothy Mayo Patterson

## PACIFIC SOUTHWEST PROVINCE

Mu Eta—Cynthia Lindhe  
Mu Nu—Dora Jean McQuillin  
Phi Mu—Belle Muench  
Phi Nu—Marjorie Gloria Morris  
Phi Chi—Rose Marie Gibbs  
Epsilon Eta—Beatrice Brown  
Epsilon Omega—Sally Thompson  
Alpha Delta—Linda Schuler  
Alpha Epsilon—Marie Wright Papendick  
Albuquerque—Ruthmary Crowell  
Berkeley—Symeta Kuper  
Beverly Hills—Beatrice Carpenter Gelos  
Fresno—Jane C. Bird  
Long Beach—Jeanne Roodhouse  
Los Angeles—Edith Reeves Habig  
Palo Alto—Sue Jones Campbell  
Pasadena—Louise Paulson  
Sacramento—Jane Schlosser Cox  
San Diego—Louise Ridgway Milner  
San Fernando Valley—Carolyn Coe Gorka  
San Francisco—Juanita Lawson  
San Jose—Frances Robinson  
Stockton—Dorothy Sandelius

FOR APPOINTMENT  
EXBROOK 5-9698  
EXBROOK 4-9481

*Charles of London*

BEAUTY SALON

530 WILSHIRE BLVD.  
SANTA MONICA, CALIF.

JG

*Parasol*

*"Sweets Designed for Good Taste"*

11628 BARRINGTON COURT  
LOS ANGELES 49, CALIFORNIA  
GRanite 2-5512

1B

*Compliments  
from*

*Nadelle's*  
JEWELERS

425 WEST 5TH STREET  
LOS ANGELES 13  
MADISON 3-2016

EW

**CORNELL'S**

EXPERT CORSETIERES

BRASSIERES

CORSETS

LINGERIE

1234 THIRD ST.

SANTA MONICA

JG

*Attention Choral Directors!*

**NEW AND EXCITING CHORAL MUSIC**

Fill out the coupon below and mail to Pro Art Publications, Inc. We will keep you up-to-date on the latest in new choral music.

Check (✓) types of choruses you direct

SATB

SSA

Unison

SAB

SA

Male

Which type of choral music are you interested in?

Sacred

Secular

Do it now—return this coupon with your name and address to—

**PRO ART PUBLICATIONS, INC.**

469 Union Ave.  
Westbury L. I., New York

EW

*I heard - I saw - I met . . .*

*W*

---

*Thanks to a  
Mu Phi husband*

for the  
marquee sign

**LEO GORKA**

of

Leo Gorka Associates

2330 West 3rd Street, Los Angeles 57

DUnkirk 1-3977

---

*I heard — I saw — I met . . .*

---

**de KEYSER MUSIC**  
(next door to the Pickwick)

Specializing in unusual publications of Early  
Masters and Contemporary Composers.

6737 Hollywood Blvd.  
Phone HO 5-5035

VG

---

**MUSIC MEND**

Keeps New Music New

Preserves priceless copies

Most Sizes—Upright—Oblong—Octavo  
Polyethylene 20c Vinyl 60c  
Quantity price on request

Available only at MUSIC MEND  
223 N. Moore, Monterey Park  
AT 4-4246 Mrs. Vergie Westlund  
MD

*Missing A Note?*

**DON'T MISS THIS ONE**

**NORREN for THE FINEST  
MUSIC STORAGE EQUIPMENT**

MUSIC FILES  
FOLIO CABINETS  
GOWN CABINETS  
RECORD CABINETS

Why not write now  
for information

**THE NORREN MFG. CO.**

P. O. BOX 5086  
Pasadena, California

EW

*I heard – I saw – I met . . .*

---

*Thanks to a  
Mu Phi husband*

HENRY H. JOHNSON  
ARTIST

for the  
program cover  
design

124 West Fourth Street, Los Angeles  
MAdison 2-6336

---



1890  
1891  
1892  
1893  
1894  
1895  
1896  
1897  
1898  
1899  
1900

1901  
1902  
1903  
1904  
1905  
1906  
1907  
1908  
1909  
1910

1911