

THE
TRIANGLE
OF MU PHI EPSILON



Convention Issue

APRIL • 1932
Vol. XXVI Number 3

The TRIANGLE of MU PHI EPSILON

VOL. XXVI

APRIL, 1932

No. 3

TABLE OF CONTENTS

NATIONAL PRESIDENT'S MESSAGE	170
CONVENTION HEADQUARTERS	171
MEET THE GENERAL CHAIRMAN	172
OTHER MEMBERS OF THE RESIDENT COMMITTEE	173
"THE TRIANGLE DAILY" COMMITTEE	175
THE MODEL INITIATION COMMITTEE	176
OUR GIFTED HOSTESSES	177
THE COMMITTEE WELCOMES YOU	178
THE MUSICAL CENTER WELCOMES YOU.....	179
THE HEART OF AMERICA	180
YOUR HOME AWAITS YOU.....	182
HELENA MORSZTYN—A TRIBUTE	184
MINIATURES	186
WHY YOU SHOULD GO TO CONVENTION	188
CONVENTION WEATHER REPORTS	189
HOSPITALITY AT LONGVIEW FARM	190
ALL ABOARD FOR KANSAS CITY	191
CONVENTION PROGRAM	192
OF COURSE YOU'RE COMING!	193
CONVENTION DELEGATES	194
NATIONAL CLUB HOUSE NEWS	214
CHAPTER AND CLUB LETTERS	215



Be sure to visit the Royal Gorge in Colorado on the way to convention.
(Denver and Rio Grande Railroad)

THE TRIANGLE is the official publication of Mu Phi Epsilon, National Honorary Musical Sorority.
Founded November 13, 1903.
Incorporated under the laws of the State of Ohio on May 8, 1905. Member of the National Federation of Music Clubs.
THE MU PHI EPSILON TRIANGLE is published in February, April, September and November by the Alex. Duffer Printing Co., 853 Howard St., San Francisco, California.
Address all manuscripts and send all subscriptions to the Editor, Helena Munn Redewill, 835 Hyde St., San Francisco, California. Subscription price, \$1.75 a year. Single copies, 50 cents. Life subscription, Initiates, \$17.50. Present members, \$20.00.
All material must be in the Editor's office before the first of February, April, September and November, respectively, or it cannot be accepted.
Entered as second-class mail at the postoffice at San Francisco, California, under the act of March 3, 1879.

CONVENTION HOSTESSES

MEET THE GENERAL CHAIRMAN

BERTHA HORNADAY, Mu Delta president for three successive years and chairman of the Morning Musicale Series in 1927-28.



BERTHA HORNADAY

"Will it be a prosy, sedate, uninteresting crowd that will assemble in Kansas City in June? Well, we say *no!* Why, everyone is going to be so peppy you will declare they are *all* fresh from college. Each girl (old and young) will be on her toes, ready to step ahead of the next one and pull anyone along who lags behind.

Of course there *must* be some serious moments. We have many important things to consider, and we shall need our wits well-sharpened in deciding them. But the old adage, "All work and no play makes Jack a dull boy," is well in the minds of the Entertaining Committee and they are determined the 1932 Convention shall be nothing short of brilliant!

On adjournment of business sessions we shall make a dash for the swimming pool—or if the intermission is long enough to permit, the best movie houses of the city are within a stone's throw from the Club—and there will be *other* amusements.

AND THE STUNT PROGRAM! Why, Broadway has *never* seen such talent. So come on and join the merry group of Mu Phis!

BERTHA, *the Busy Bee.*"

Musically speaking: top-notch pianist, organist, teacher, first assistant to John Thompson, head of the piano department at Kansas City-Horner Conservatory. Assistant to Maurice Dumesnil in his master classes at the Conservatory in 1929-30. Organist at St. Mark's Lutheran Church at the present time. Delegate from Mu Delta to Mu Phi convention at Mackinac in 1930.

Socially speaking: the best pal in the world, one who will listen to your troubles but not complain of her own.

Recreations: European travel and study with a group of young student friends.

And here's her own message:

"How About That 1932 Convention?"

OTHER MEMBERS OF THE RESIDENT COMMITTEE

"ASK US ANYTHING!"

Zella Lukens Easley heads the Committee on Arrangements. You'll like Zella, another Mu Delta girl, because she will be looking out for your comfort every moment you are at convention. Incidentally, she is also a fine musician—Ernest Hutchinson, Alfred Cortot, Rudolph Ganz have coached her—but don't let that make you afraid of her. And *hist!* She's a marvel with finances, and has maneuvered a savings account for Mu Delta since 1928.



ZELLA LUKENS EASLEY

Nita Abrahams Taylor, another Mu Delta past president, is chairman of the Entertainment Committee. When she isn't singing in opera, or appearing as soloist with one of our large orchestras, or studying in Italy, Nita might be caught unawares in the backyard playing with her children or in the attic working out a new scheme for some stage decorations for a Mu Delta musicale.



NITA ABRAHAMS TAYLOR

Cordelia Brown Murphy, secretary of the Entertainment Committee, established the first musical scholarship in Kansas City through the Musical Club. *Service* is her middle name with *Loyalty* holding a crown. Her cherished memory is a long association with her teacher, Teresa Carreno, especially a summer together in the Austrian Tyrol.



CORDELIA BROWN MURPHY



GRACE KAUFMAN

Grace Kaufman is treasurer of the Convention Fund—doesn't that sound like being the Andrew Mellon of Mu Phi? Bertha Hornaday and Bertha King just know good treasurers by instinct. Grace is registrar at the Kansas City-Horner Conservatory, a charter member of Mu Delta and has handled \$14,000 in scholarship funds for her chapter. Musically speaking she is a graduate in piano of Bethany College.

Velma Schmidt Schreiber, chairman of the Transportation Committee, will attend to the endless details connected with trains, automobiles and airplanes. If you are stranded on Pike's Peak just wire Velma, who is vice-president of the Kansas City Alumnae Club, and past president of Xi Chapter. For diversion Velma looks after a Phi Mu Alpha husband and two small children.



VELMA SCHMIDT SCHREIBER

Lucille Miller Ferris, another Alumnae Club member imported from Xi Chapter, is chairman of the Publicity Committee. Beware, artless Mu Phi, lest you wander into print—Lucille may snap you unawares in the swimming pool! Lucille is a graduate of Oberlin Conservatory, and after further study and teaching in Missouri and New York she settled down as a young wife and mother and is now president of Kansas City Alumnae Club.



LUCILLE MILLER FERRIS

"THE TRIANGLE DAILY" COMMITTEE

Ruth Hird, chairman of the Newspaper Group, is vice-president of Mu Gamma Chapter, and a senior at the University of Nebraska. She vows that as a newspaper chairman she is a fine pianist and organist. But here's a secret—she has done lots of writing at college.



RUTH HIRD



MARJORIE SHANAFELT

Marjorie Shanafelt of the Lincoln Club has most unusual interests. First, she is curator of visual education at the Nebraska State Museum—doesn't that sound fascinating? When off duty Marjorie has been caught playing the harp and writing short stories for nature magazines.

Helen Mokrejs, president of Mu Psi Chapter, will graduate from Coe College in June in piano and pipe organ. Her favorite diversion is winning contests as a skilled pianist. But her famous uncle, John Mokrejs of New York, well known composer-pianist, is also sure that Helen can write.



HELEN MOKREJS



MARGARET SNYDER

Margaret Snyder comes from Omega Chapter at Drake University, where she is well known as a fine pianist, both in the concert field and over air lanes. Margaret had charge of the Drake University Radio Series for an entire year and incidentally, fine newspaper experience as well.

Carolyn S. Wooden, president for the past two years of the Des Moines Alumnae Club, is another member of the Newspaper Group. Carolyn hails from Beta, originally, leaving Boston for further study in Chicago and Madison. She has a reputation for executive efficiency and fine leadership in civic musical affairs.



CAROLYN S. WOODEN

Two other members of the Newspaper Group are Helen Curdy, Mu Delta, and Olivia Olsson Baker, Kansas City Alumnae Club.

THE MODEL INITIATION COMMITTEE

INITIATION plays a tremendous part in the career of a Mu Phi. It sets the stage for her by expressing Mu Phi hopes and ideals; by its sheer beauty it fills her with aspirations and emotions, with intense loyalty. It makes a consistently thrilling impression on all, from the youngest initiate to a distinguished member like Madame Schumann-Heink.

The committee for the model initiation ceremony at our convention in June hopes to make the ceremony one of the nicest ever to have been presented. For that reason they are asking you for suggestions. Are there some special features in your local service which you think might be worthy of incorporation into our national one? They will be given careful consideration by the committee.

Enterprise Knox, chairman of the Model Initiation Group, chorister of Xi Chapter, is president of the Kansas University Women's Glee Club, has been a music supervisor for six years, and will graduate in voice in June.



ENTERPRISE KNOX



Edith Goerwitz, teacher of piano and theory in the children's piano department at K. S. C., Manhattan, Kansas, graduated from Northwestern University. Was elected to Pi Kappa Lambda and Sigma Chapter of Mu Phi Epsilon. She has been the efficient president of Mu Mu the past year.

EDITH GOERWITZ

Mabel Louise Leffler of Phi Epsilon Chapter is head of the piano department at the College of Emporia, having studied at Oberlin Conservatory and with Tobias Matthay in London. A wide teaching experience previous to her position at Emporia gives Mabel an enviable record.



MABEL LOUISE LEFFLER

Mary Maxine Korfhage of Phi Delta Chapter will graduate in voice at the University of Missouri School of Music in June. Mary Max will sing at the convention delegates' formal concert as well as assist with the model initiation.



MARY MAXINE KORFHAGE

Catherine Hatch, Mu Delta, and Della Borders, Kansas City Alumnae Club, will also assist at the Initiation Ceremony.

OUR GIFTED HOSTESSES IN KANSAS CITY

By MINNA KENNEDY POWELL, *Music Editor of the Kansas City Star*

EVER since local Mu Phi girls have known they were to have the happiness of playing hostess to the 1932 convention, they have been considering their resources of hospitable entertainment. The Kansas City chapter is such an important factor in the cultural life of this city of 600,000 inhabitants that whatsoever the chapter designates, *that* it may have. This was immediately demonstrated by the cordial coöperation offered by the Kansas City Chamber of Commerce when Bertha Hornaday, delegate at the last convention at Mackinac Island, proposed to invite the convention to Kansas City. It has been demonstrated at every turn since.

When I say Mu Delta Chapter has been an important factor in the cultural life of the city, I do not mean that it has merely participated in that life as other musical clubs do. In the local Mu Phi membership are women who rank as *artists*—an unusually large number of them, some professional, others amateur, many in demand as soloists with the noted symphony orchestras—pianists, violinists, singers.

Why not, thought some of these Mu Phi leaders, use our artists in a series of musicales and take the proceeds to help struggling talent? A marvelous idea!

Members sold the tickets to their friends and to the music-loving public. No matter how much a Mu Phi member received elsewhere for her services, she contributed them to the morning musicales. In this way expenses were kept down and enough money was cleared the first season to pay the expenses of an ambitious and gifted girl while she studied for a year with a master in New York.

For eleven years these morning musicales have continued, always maintaining a high artistic standard and realizing enough profit each year to give one or two or three scholarships. Some of these scholarships have been with local teachers and some have been in eastern schools. One of them this year is with Artur Schnabel in Berlin, where Mary Betty Felts, graduate of the Kansas City-Horner Conservatory of Music, is continuing her piano studies.

The personnel of the Kansas City Chapter is of such high artistic caliber that the six concert programs each winter seem hardly enough. Subscribers are usually eager to renew their subscriptions and new ones are annually acquired.

This, then, is the Mu Phi convention Hostess Chapter. Assisting the Mu Delta girls are nine other chapters and clubs from the adjoining environs, a strong group of Mu Phis sharing in the responsibility of entertaining the Grand Chapter. They are called "The Heart of America Group" and consist of the following units of this splendid sisterhood: Mu Delta, Kansas City; Xi, Lawrence, Kans.; Mu Gamma, Lincoln, Neb.; Phi Delta, Columbia, Mo.; Phi Epsilon, Emporia, Kans.; Mu Mu, Manhattan, Kans.; Mu Psi, Cedar Rapids, Ia.; Omega, Des Moines, Ia.; Kansas City Alumnae Club; Lincoln Alumnae Club; Des Moines Alumnae Club.

THE COMMITTEE WELCOMES YOU

WELCOME, most welcome, Mu Phi sisters, to Kansas City!

"The Heart of America Committee" is already tense with the anticipation of seeing you and is diligently working out convention plans.

Those of you who have attended former conventions know what inspiration and stimulus is derived from the contact with the Grand Chapter. At once you will enter with activity and enthusiasm into the national life of the sorority.

And there will be recreations which we hope will attract you.

On the afternoon of your day of arrival there will be a sightseeing tour of the city. Starting with the Kersey Coates drive on the west side, affording a splendid view of the Missouri and Kaw River Valley, the drive will proceed by way of Penn Valley Park, past the Liberty Memorial, to the south side, showing the beautiful homes of Country Club, Sunset Hill, Indian Hills and Mission Drive. Then for a cup of tea at the charming Italian home of our Mu Delta sister, Ada Roberts (Mrs. Sam)! The return drive to the club will be via the Kansas City Art Institute and William Rockhill Nelson Gallery.

On another afternoon there will be a drive to Longview Farm, the summer home of Lula Long Combs, and her famous stables. Overlooking the beautiful lake on the estate we shall enjoy a picnic supper and linger until the cool of the evening when we shall return to the thrilling concert played by our distinguished sister, Helena Morsztyn. This event, as well as the delegates' formal concert, will be given in the artistically appointed Thomas A. Edison Hall.

We are endeavoring to arrange for you a convention that will be a happy memory and a time well-spent towards attaining the ideals of our beloved sorority. And what a joy it will be to meet those about whom you have heard so much, and also to greet old friends! We all shall certainly receive real inspiration from the contact with delegates from all parts of our wonderful country which in recent years has come into its own in the realm of music.

Again Mu Phi sisters we, "The Heart of America Committee", welcome you to Kansas City!

With Music, Friends and Harmony
Our lives are strewn with flowers,
Sweet perfume scents our thorny paths
And brightens all the hours.

"The Heart of America Committee",
CORDELIA BROWN MURPHY, *Secretary.*

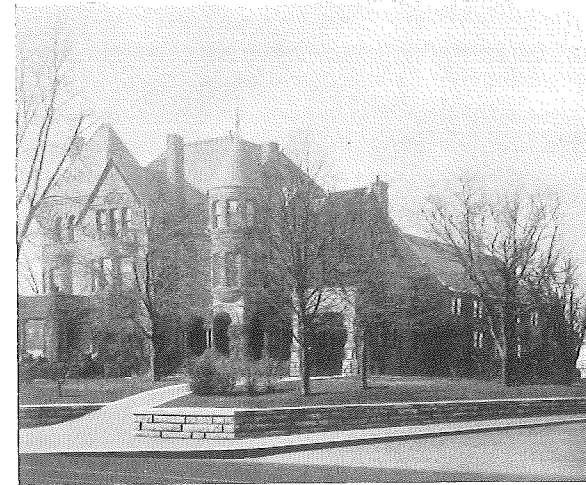
THE MUSICAL CENTER WELCOMES YOU

TO the Members of the Mu Phi Epsilon:

In behalf of the Kansas City-Horner Conservatory I should like very much to send in advance a word of greeting and welcome to those Mu Phis who expect to attend the convention in Kansas City in June.

In addition, I am sure that I can widen the circle of welcoming friends far beyond the confines of our school. Particularly for Mr. Conrad Mann and the Chamber of Commerce I am privileged to send greetings and good wishes.

We are very proud, indeed, of the Mu Phi Chapter existing in Kansas City.



Ridgway Hall, Mu Delta Chapter Home

For many years the members of this excellent group have taken advanced leadership in the cultural affairs of the city. They have been prominently identified with every movement making for musical advancement; their work has been helpful and inspirational throughout.

Because we have had the privilege for years of evaluating the work of the Mu Phis through the members of Mu Delta

Chapter, you will perceive, I am sure, how eager we are to meet their visiting sisters.

I know you will have a happy, profitable convention, and I hope you will enjoy your stay in Kansas City. I am sure that we will all feel the helpful influence of your visit and participate in a large measure in the inspiration that you will bring with you.

Our experience with Mu Phi activities has taught us to expect much from the members of your organization. Your devotion to your own musical ideals, your benevolent thought and care for young musicians, the high standing of your members, all have been impressed upon the public in Kansas City. So you will see, I am sure, how we are looking forward with eagerness to your visit.

Sincerely yours,

CHARLES F. HORNER, *President,*
Kansas City-Horner Conservatory.

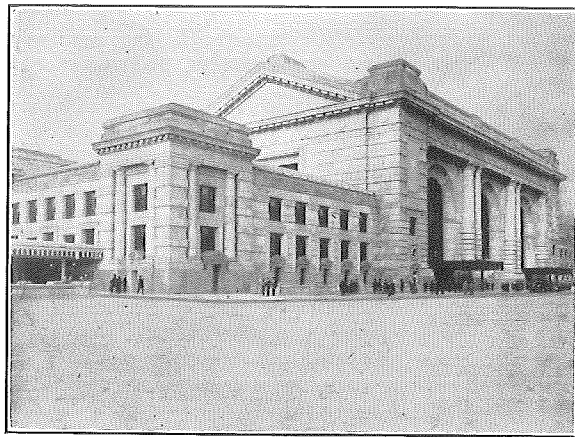
THE HEART OF AMERICA

By MARY E. WATSON, *Mu Delta*

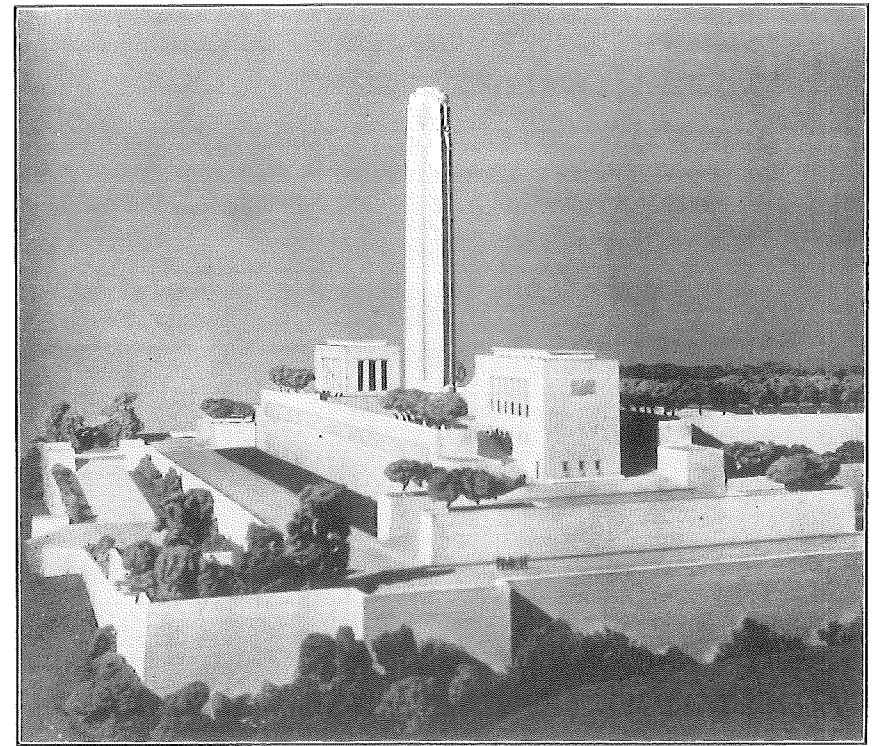
I DARESAY the eyes that convention-bound Mu Phis turn toward Kansas City are filled with curiosity. They need fear no disappointment. Kansas City is a city of surprises: called the most American city in the United States (for it has the smallest percentage of foreign-born inhabitants of any of the great cities); a city built upon hills—its western boundaries overlook the low rolling plains that unwind into the flat prairies of Kansas; a city that may boast of one of the most beautiful residential sections of any city in the country. Yet—in its heart is the vortex of iron and steam, a clang and confusion that comprise a great railway terminal and the largest freight yards in the world.

The magnificent cliff drive, rugged in almost unclaimed natural beauty, rises above the flat lands of the Missouri river valley, with an orderly pattern of truck gardens, railroads, grain elevators, and industrial buildings. The frame of a great cultural center, the William Rockhill Nelson Gallery of Art, stands in its lofty white beauty, the promise of the fulfillment of one man's civic ideal and pride (with masterpieces including a Titian, a Rubens, and one of the finest El Grecos in existence). Yet only a few miles away in a curve of low hills still stands the Shawnee Mission whose humble red brick walls sheltered the first missionaries that came to minister to the Indians of this territory.

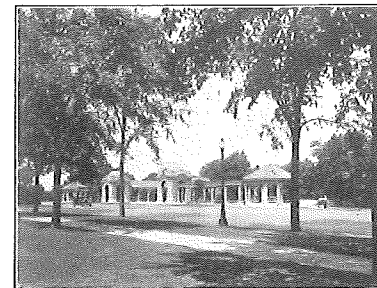
Upon her proud head this great city in the very heart of America wears the steel helmet of industry, yet the dust of the romantic Santa Fe trail still clings to her skirts. In her eyes, bright with the hopes of progress, linger the dreams of a little band of hardy pioneers who stood on the bluffs above the Missouri river three-quarters of a century ago and envisioned a city that should fling up its towers like banners to the sky—Kansas City, on the threshold of the western plains!



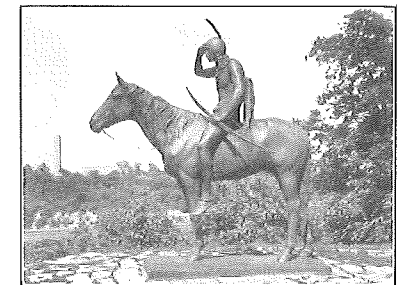
Union Station, Kansas City



New Kansas City Liberty Memorial

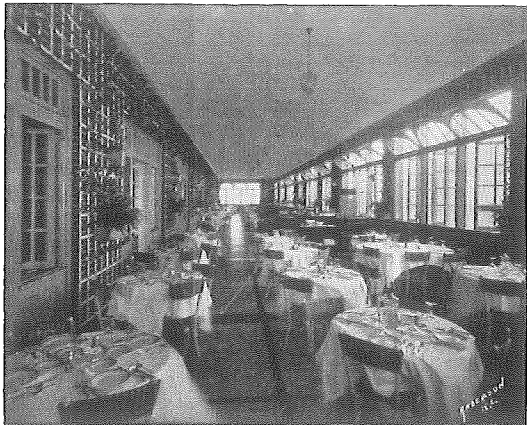


The Concourse on Benton Boulevard



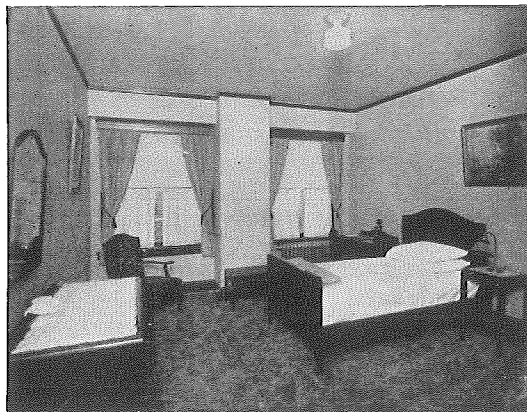
"The Scout" in Penn Valley Park

YOUR HOME AWAITS YOU—THE KANSAS CITY ATHLETIC CLUB

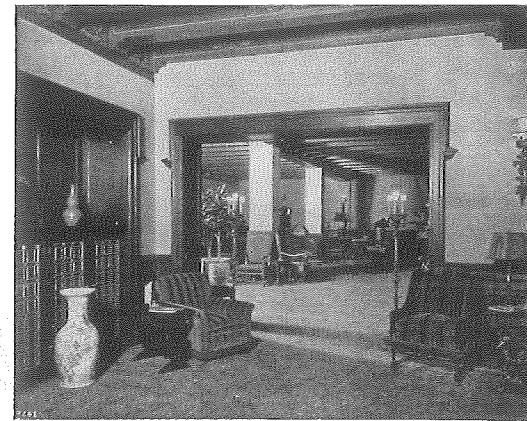
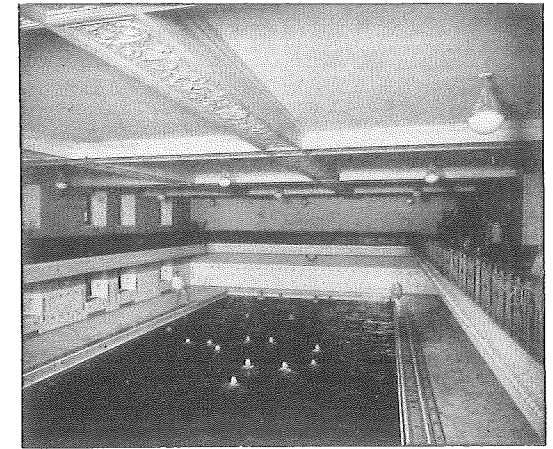


This beautiful roof garden has been given over to Mu Phis during convention and is especially designed to be cool on the hottest days. And they say the meals are the most delicious to be found anywhere!

When the pleasures and the cares of the day are over and there is nothing left but enchanting dreams, here is an airy, comfy room and a snow-white bed for the weary Mu Phi.

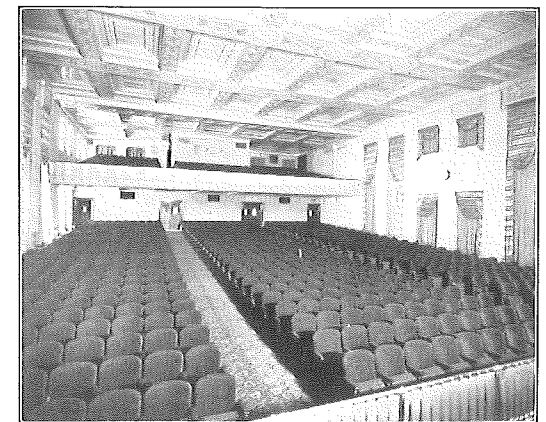


And, oh, for a refreshing plunge in this immense indoor swimming pool! Can't you just see Mu Phis by the dozen taking a "pep" dip before dinner each night? And no extra charge, either!



The keynote of the Club is struck in the beautiful lounge and library. Here one may cast away care, relax, and chat with congenial companions. Easy chairs, davenports, shaded lights—well, you know the continuation of that suggestion!

Thomas A. Edison Hall
in the
Kansas City
Power & Light Building
where the
Convention Concerts
will be held.



HELENA MORSZTYN

A tribute by HELENA MUNN REDEWILL, *National Editor*

ONE of the world's truly great pianists, an international celebrity, is a Mu Phi, active in Mu Epsilon Chapter since 1928, and a real flesh-and-blood sister. Is it not fortunate for us all that Sister Helena Morsztyn happens to be scheduled for a master class in Minneapolis in July and will arrive in the United States from a brilliant European concert season just in time for the national convention? And again, is it not fortunate that she will be able to appear in a special concert for Mu Phis and their friends, Thursday evening, June 23, generously giving of her abundant talent for the delight of the sisterhood? Can we ever thank her sufficiently? Or our Mu Delta sisters for making it possible for her to detour from Chicago to Minneapolis via Kansas City?



HELENA MORSZTYN

Truly, my typewriter hasn't enough exclamation points to express sufficiently my delight and yours, too, at this moment! And truly I know what I am talking about! I know my artists and I know my sisters—and this Mu Phi is one of the most gifted, kindly and sisterly of them all.

One torrid July day last summer she trekked—or taxied—across the burning avenues of Minneapolis to hear your humble editor play a recital of Musical Miniatures. And her very presence was so sweet, so genuinely interested, so entirely sisterly, that the other Helena forgot even to have stage fright!

But so much for a charming personal experience. Other Mu Phi readers of this magazine have similar delightful remembrances of this little lady, who numbers many of the crowned heads of Europe among her friends—and pupils—who plays for kings, queens and princesses every season on foreign tour in her journeys from India to Egypt, and who is so proud to wear the jeweled triangle our beloved sisterhood! We who number among our ranks—not as *honorary* but as *active* members—such superb artists as Madame Schumann-Heink, Mrs. H. H. A. Beach, Katherine Meisle and Ethel Leginska, to mention but a few of our world-renowned artist-members, we are just bursting with pride and joy to have their contemporary in rank, Helena Morsztyn, our convention guest.

We hope she will play a great deal of Chopin on her program, for as an interpreter of this most poetic of composers, she has few equals. She plays Chopin as only a Pole *can*, and perhaps as only that one other great Pole *does*. Of course I mean Paderewski, her close friend, and the close friend and associate of her

brother, Count Morsztyn, who is now secretary to the minister of Poland, having likewise been secretary to Paderewski during his administration as premier. For the Morsztyns are one of the oldest Polish families, well known in the history and literature of the country.

Perhaps you would like to know what a few of the critics say about "Our Helena." I can only quote briefly, taking a line here and there from the great mass of press notices before me. But the information will serve as an appetizer for this particular event at our 1932 convention, will make you want to come, and try to come, more than ever:

Helena Morsztyn has a technique rarely surpassed—ability to produce great warm masses of color, yet preserving a touch as light as gossamer and fleet as a butterfly.—*London*.

To see Helena Morsztyn play, her face radiant with ecstasy, her fingers marvellously agile and sure, gives one the vivid impression of a divine gift.—*Paris*.

Helena Morsztyn gave us a concert of pure music. No scintillating piquancy, no caprices, no jests, but pure, joyful playing.—*Berlin*.

Only a few stars keep their light for a long time; they are the artists in whom the real sacred fire burns. To these few belongs Helena Morsztyn.—*Leipzig*.

Both musically and technically she is amazing. Music vibrates in her; every bar she plays is interesting. It is at the same time attractive and astonishing, enjoyable and refreshing.—*Munich*.

An extraordinary revelation was the pianist, Helena Morsztyn—a genial interpreter who masters the keys with a rare artistic perfection.—*Rome*.

The pianist, Helena Morsztyn, can be called the female Rubenstein.—*Madrid*.

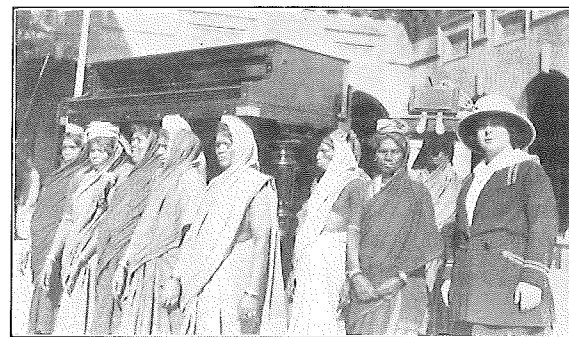
Helena Morsztyn has no affectations, no sentimentalisms. Her technique is not only astounding, it is without fault.—*Alexandria*.

When her instrument is made to sing, her pictures are infinitely tender watercolors or pastels. Or else, at another moment, we have sculpture of energetic lines, proud and immense. Helena Morsztyn came to us preceded by world-wide fame. But she surpassed even herself.—*Belgrade*.

The enthusiasm of the audience was boundless. Her playing was a triumph. Helena Morsztyn is a pianist of the finest school.—*Chicago*.

This artist possesses personality in a high degree. If there are such things as pianistic giants, Helena Morsztyn must surely be accounted one of that towering clan.—*Minneapolis*.

An artist to her finger tips. Helena Morsztyn lent fresh charm of pearl-like phrasing to a dozen Chopin miniatures. She must be numbered among the few worthy Chopin interpreters.—*New York*.



Fourteen native women in India delivering Helena Morsztyn's piano to the concert hall. Their fee was four annas, six cents! They were sincerely enchanted to receive double the sum for posing in this picture!

MINIATURES

By ORAH ASHLEY LAMKE, *Past National President*

Like jewels from a jewel box
Each glistening one adored,
Memory pictures I bring forth
To reënjoy the days of yore.

(A convention "Log" by one who attended many of them.)

—'05—

SINFONIA and Mu Phi delegates, met by a railroad official and put into a special coach, accompanied by a huge box of chocolates. On our way to Cincinnati for convention, my first! Thirteen officers and delegates all told. The luncheon at the Zoo. (Remember the black monkey who stole his keeper's brush and tried to paint his bars?) Supper, organ recital and dance with Sinfonians at Professor Sterling's lovely home. The festive ball. A charter granted, and Mu Phi a real national sorority. The rush back to Ann Arbor to sing through the May Festival, after which I did not speak for three weeks, honest; but it was worth it. The vice-presidency did not weigh heavily, the only duty being to look as dignified as the title sounded.

—'06—

Detroit—What a large gathering! Seven chapters now—we were indeed national. New laws to govern groups under such different conditions, but to everyone's satisfaction. Hospitality—the whirl took one's breath away. Everyone had those large automobile veils to tie over huge hats for the trip over the city. Autos with no front doors! I agreed to take my M. R. S. the night of the dance. It was a beautiful party.

—'07—

Ann Arbor—What a joy to meet the old girls! Do I dare say *old*? Yes indeed, for council appointed me alumnae delegate-at-large, and the alums now had a vote. Is not anyone old who can remember that thrilling tallyho ride? (I see our new members looking up that word.) Every man on the campus tried to get a bid to the dance, and every hack in town was engaged. They gave me the secretary's book to take home. Yes, everything was kept in one book, membership file and all.

—'17—

Ten years—Twenty-three chapters! Xi Chapter proving more than capable as hostess. A girl came all the way from Des Moines to petition for a chapter. The usual whirl of good time, plus some. To keep the ever-increasing list of alums interested in us proved much more work than taking care of a new baby,

but the enthusiasm of so many new sisters made me realize how much had been missed in the ten-year skip of conventions.

—'18—

Evanston on the Lake—Council at Effie's beautiful home with the waves dashing almost to the door. No one will ever forget the thrill of "Our Triangle" at the first morning session, led by Caliste herself. Iota Alpha's lovely tea. The flat tire, and barely making the concert, even minus a dinner. It takes navy uniforms to make a real ball. For the first time many visitors brought pep and gayety, which really is the making of a convention.

—'22—

One should not brag about their own party, but Theta did put on a good show on very short notice. The "Convention Hounds" were here in full force. Doris put us on our feet financially. Mayme was here with Club House idea and so enthused us that we alums gave her all the money we had raised for convention when our actives proved so successful that they did not need our help.

—'24—

By the Waters of Minnetonka—Radisson Inn in a profusion of lilacs, and such a gathering of old friends! No wonder two great achievements were born there—the Endowment, and a firm basis of increased Musical Standards. Every bit of entertainment was enjoyed, and those who slept (?) off the hall where the Alpha girls staged their 2 A. M. show had an extra treat. Who rang that cowbell at 4 A. M.? And, last is best—our own Professor Sterling was with us this time!

—'26—

By Lake Cayuga's Waters—One old Indian hunting-ground was so delightful we just had to try another one. The daily newspaper was a rare treat. Niagara Falls, Gilderoy's special conductor, down the breathtaking hills, S. A. I. party, and that luscious duck dinner will never be forgotten. So many alums that Doris had a little convention reorganizing that department, and only with Pearl's help could her work be carried on. Our Indian charm still held sway and Marguerite took back to New York the right to start our Club House. With us this time were two past presidents, Doris and Ora, and our other founder, Ted.

—'28—

Up, up, to Troutdale-in-the-Pines, our Denver sisters took us. Those glorious peaks to inspire us! Our endowment fund ever increasing under Mary's care now nearing its goal. Perhaps the fashion show best brought to us the realization of the many steps we had taken. That one chapter could entertain such a huge delegation (170 at our last dinner) was almost incredible. I can still taste the delicious trout and see the smiling faces. Would it be possible for me to carry on in Lucille's footsteps as the new National President? Would we ever realize again the great joy of having our two founders with us?

— '30 —

Mackinac, the Isle Beautiful—Once more the Great Spirit is with us to guide our big ship. And indeed we seemed on a big ship in that Grand Hotel, for it was officered by six entertaining groups from Detroit, Ann Arbor and Toledo, who so beautifully solved the problem of caring for our ever-increasing big family. Our Endowment completed and our Club House proving ever a joy, and—but it is so fresh in our memories we need say no more.

— '32 —

Kansas City—The "Heart of America" Group bids us come, and every Mu Phi heart is with them. Can we go a hundred strong? New sister, you must bring those new ideas for an ever-increasing Mu Phi growth. Older girls, old friendships renewed and loyalty shown will add one more jewel to your treasure box to be cherished more each coming year. To the greatest convention ever!!

WHY YOU SHOULD GO TO CONVENTION

By PEARL NOXON JOHNSON, *St. Louis Club, Past National Editor*

IF YOU are an old alumna you should go to convention to renew the pleasant friendships of by-gone conventions, to add a more mature judgment because of your past experiences, to forget the petty annoyances of this work-a-day world by contact with others, whether they be homemakers or members of the musical profession.

If you are a new alumna you should go to convention to participate once more in the fun and gayety which have always been a part of active sorority life, to compare notes with those who are also striving to reach the topmost rung of the ladder of success, to receive that inspiration necessary to sustain you through the many disappointments which normally fall to the lot of those who seek success in the art of music.

If you are a senior-to-be you should go to convention to gain the knowledge necessary to successfully carry on the work of the active chapter, to broaden your vision by forming friendships with sisters from the north, south, east, and west, to grasp the opportunity of personal contact with the members of the National Council so that written instructions later will have a more vital meaning. Convention will instil in you love and enthusiasm for Mu Phi which you in turn will pass on to those who follow.

Whether you be an old or new alumna or a member of an active chapter you should go to convention to feel the thrill which comes from daily association with those who seek the same great goal in music, friendship, and harmony.

CONVENTION WEATHER REPORTS

For the *Un-Conventional* Activities

Tell us whether you'll have fair weather flags,
And how warm the clothes we should pack in our bags?
How different's the heat at morning and noon
In Kansas City at convention in June?

Now to answer these questions from states far apart
Will say we can give you no definite chart.
The nights may be warm; then this is the place
For the flimiest chiffons, the thinnest of lace.
But the weather may cool (tho not a "cold snap")
So be sure that you bring some kind of a wrap.



The Athletic Club has a wonderful pool.
"The suit will be free" for *us*—that's the rule.
So don't bother to bring your own swimming suits,
But you will want to pack your own riding boots,
If you enjoy the following a cool bridle path
Before you indulge in a refreshing bath.

No heavy woolens, but lighter sports clothes
For your tennis, golf or distant horse shows.
It may be calm and there may be a breeze.
We won't predict—wear *just what you please!*

OLIVIA OLSSON BAKER,

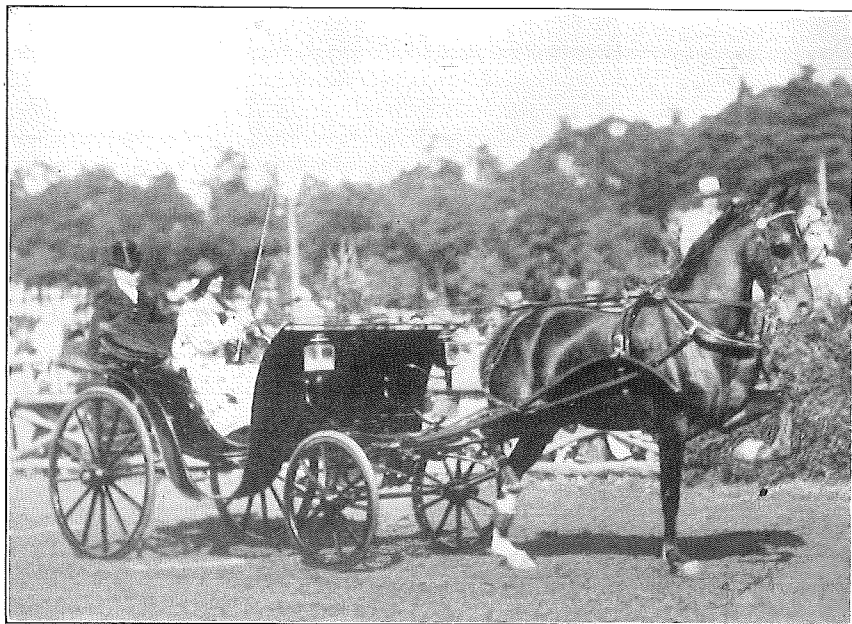
Kansas City Alumnae Club.

HOSPITALITY OF LONGVIEW FARM EXTENDED BY LOLA COMBS

THE name of Lola Long Combs is recognized, not only nationally but also internationally, in connection with her famous string of horses. She has made the breeding of beautiful horses an art to which she has devoted her best efforts, and today some of the most valuable and best-known horses of the world may be found in her stables.

Longview, the country home of Mrs. Combs, might well be called "the horse's paradise," it is so wonderfully equipped and managed. Here her horses wander from the beautiful stables out into clover, when they are not being shown in the ring. The estate contains a small race track where each year is staged a most interesting horse show.

Mrs. Combs, a woman of great charm and personality, has graciously extended the hospitality of Longview to our visiting and local Mu Phis and is helping the Entertaining Committee in planning a delightful entertainment there. This should prove to be a high point in the convention recreations.



"Chief of Longview," winner of a blue ribbon in every show in which he was entered.

ALL ABOARD FOR KANSAS CITY

By PEG STRINGHAM, *Mu Rho*

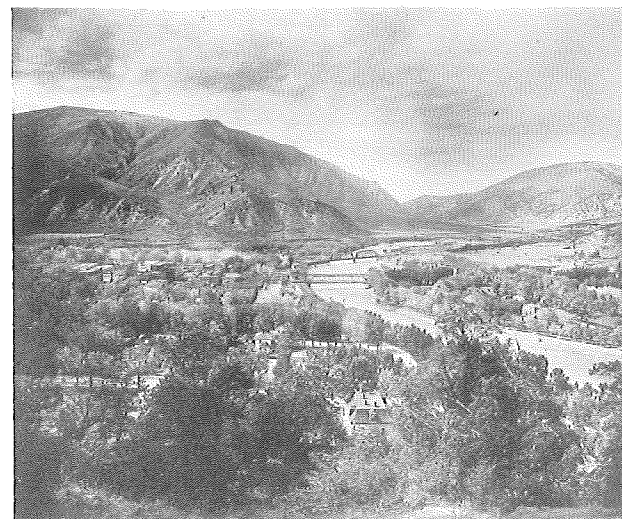
MU PHI convention! Oh boy! What a world of rich memories are mine as I recall the last one I attended in dear old Denver. Until my old age I shall be cheered by recollections of those fair days.

Something doing every minute with all lines of action, endeavor and thought focussed on one great idea—a Sisterhood in Music. The interesting business sessions with representative girls from every part of the United States popping up with new viewpoints and ideas; the musicales, receptions, the displays from different chapters; and the get-togethers in the wee small hours. Believe me, it is all worth hitch-hiking many miles to enjoy!

Mu Phi's Sisterhood has accomplished almost unbelievable results and with this unity of forceful spirit much more will yet be done through us for the cause of music. And the best place to get the larger vision beyond the horizon of a local chapter is at the National Convention. After attending even one convention of Mu Phi Epsilon, its purposes and what it offers to its members take on a vastly different meaning and color.

Believe me, if you want one of the most inspiring of experiences with the best bunch of girls in the United States, keep your appointment with the coming convention!

(EDITOR'S NOTE—It was Sister Peg, wife of Dr. Edwin L. Stringham, dean of the Denver College of Music in 1928, who helped make the twentieth national convention such a success).



Glenwood Springs, Colorado, is one of the most charming spots in the world to visit en route to Convention. (D. & R. G. R.R.)

CONVENTION PROGRAM

TUESDAY, JUNE 21

- 7:30 to 9:00 A. M.—Arrival of delegates and visitors.
 9:00 to 12:00 M. —Breakfast, unpacking, visits to swimming pool, beauty parlors, etc.
 12:30 P. M. —Luncheon.
 2:30 P. M. —Drive over the city and tea at Ada Roberts' (Mrs. Sam) home.
 6:30 P. M. —Informal dinner.
 8:30 P. M. —Reception.

WEDNESDAY, JUNE 22

- 7:00 A. M. —Breakfast.
 7:30 to 9:30 A. M.—Sorority examination.
 9:30 to 12:00 M. —Business session; luncheon.
 1:30 P. M. —Business session.
 6:30 P. M. —Formal dinner.
 8:30 P. M. —Delegates' formal concert (Thomas Edison Hall).

THURSDAY, JUNE 23

- 7:00 A. M. —Breakfast.
 9:00 to 12:45 P. M.—Business session.
 1:00 P. M. —Luncheon (giving time for a longer business session).
 2:30 P. M. —Trip to Longview and picnic supper.
 8:30 P. M. —Formal concert by Helena Morsztyn (Thomas Edison Hall).
 10:15 P. M. —Stunt program.

FRIDAY, JUNE 24

- 7:00 A. M. —Breakfast.
 9:00 to 11:00 A. M.—Business session.
 11:00 A. M. —Validation of railroad tickets.
 12:00 M. —Luncheon.
 1:30 P. M. —Business session.
 4:00 P. M. —Recreation.
 5:00 P. M. —Resume business session for one hour.
 8:00 P. M. —Formal banquet and model initiation.

SATURDAY, JUNE 25

- 8:00 A. M. —Breakfast.
 9:00 to 12:00 M. —Final business session and installation of officers. Adjournment.

CONCERNING THE POCKETBOOK:

RATES:

Kansas City Athletic Club: \$6.00 per day, 4½ days (American Plan).....\$25.35

A flat rate at the Club for those not staying at the Kansas City Athletic Club, includes
 5 luncheons, 2 dinners, picnic lunch and banquet (4½ days).....\$12.00

Price per meal for those not taking advantage of the flat rate:

Breakfast	\$.60
Luncheon75
Regular dinners	1.65
Picnic lunch	1.50
Banquet	3.00

No tipping allowed, service charge included in price.

OF COURSE YOU'RE COMING!

Make convention a vacation-jault, a journey into new territory, a summer lark! You will return home feeling refreshed, inspired, ready for better work. Next year you will have a new perspective for everything, most of all for Mu Phi Epsilon.

ROUTES—RAILROAD: The Missouri Pacific (official route) Reservations—

From the West—Address: E. F. Bertling, General Agent, Missouri Pacific Lines, Judge Bldg., Salt Lake City.

From all other points—Address: I. G. Miller, General Agent, Missouri Pacific Lines, 707 Walnut street, Kansas City, Missouri.

AIRLINES—Transcontinental and local.

HIGHWAYS—National and local.

ACCOMMODATIONS FOR VISITORS—

Hotel—Kansas City Athletic Club (official headquarters) \$6.00 per day—American Plan.

Garage—Mutual Garage, 50c per day.

Registration Fee—\$9.00 (includes tips and all extra assessments).

Swimming—Kansas City Athletic Club (complimentary to those registered at the club).

Horseback Riding—\$1.00 per hour; Golf 75c.

The "Heart of America Committee" is expecting your reservation before June 1, 1932. Registration blanks (see below) should be sent in as soon as possible.

If you wish to be assigned a room with a special friend, advise on registration blank. (Two girls will be assigned to each room).

A CALL TO ALL MU PHIS!

REMEMBER June 21st! COME to the "Heart of America!"

SEND your reservations early!

Loyally yours,

ZELLA F. EASLEY,

Chairman of Committee on Arrangements.

REGISTRATION BLANK

Address—Mrs. Joseph Easley, Chairman of Committee on Arrangements, c/o Chamber of Commerce, 3rd floor, Kansas City Athletic Club, Kansas City, Mo.

Name

Address

Are you arriving on the Mu Phi Special Train?.....

If not, please state how, and the date and time of your arrival.....

Do you expect to stay at the Kansas City Athletic Club?.....

If so, please state your preference of roommates. (2 girls in each room).

Please RETURN THIS BLANK PROPERLY FILLED OUT

BY JUNE 1, 1932

CONVENTION DELEGATES



VERA THOMPSON MARK

GYNETH FREED REDMAN, *Epsilon* Business Delegate

Epsilon's delegate to convention is her president, Guyneth Freed Redman. Guyneth has been an active member since 1914, and has filled most all offices in the chapter. She is a graduate of the Toledo Conservatory of Music and is at present studying with Otto Sturmer. Recently she was honored at a special recognition service in Broadway M. E. Church for eighteen years of continuous service as organist. By her faithfulness, capability, and her fine sense of humor, she has earned our love and respect and we are proud and happy to have her represent Epsilon at the 1932 convention.



GYNETH FREED REDMAN

BETTY CHERNEY, *Zeta* Business and Musical Delegate

Betty Cherney is Zeta's delegate to Mu Phi convention this year. Betty is quite an accomplished pianist. In her sophomore year she appeared on one of the university chapel programs, which is considered quite an honor for a student. She also gave a lovely junior piano recital in February. She has written a number of compositions for musical activities on the campus. She is to represent us as musical and business delegate.



BETTY CHERNEY

JUNE WEYBRIGHT LOEVY, *Theta* Business Delegate

Theta's candidate is June Weybright Loevy. She has been reelected president of the chapter and we are looking forward to another successful year under her able direction.

June is head of the Junior Piano Department of the Miller-Ferguson Institute which includes the piano department at Mary Institute.

Ensemble music and accompaniment have claimed her interest and she is an outstandingly fine artist.

We have unlimited confidence in her as a representative of Theta Chapter.



JUNE WEYBRIGHT LOEVY

SOLVEIG SHEVELSON, *Iota Alpha* Business Delegate

We are happy to present Solveig Shevelson, our president, as Iota Alpha's delegate to convention. Solveig studied voice at the Chicago Musical College under our own Rose Lutiger Gannon, and later with Mary Peck Thompson of Chicago. She was initiated into Mu Phi in 1925 and has served the chapter as historian and vice-president.

Believe it or not (and you won't when you see her), but Solveig is the mother of a daughter and two sons, and is now a proud grandmother! She is a lovely artist, a wonderful mother, and a most capable executive.



SOLVEIG SHEVELSON

MARY KEELEY, *Lambda* Business Delegate

Lambda Chapter is sending Mary Keeley as its delegate to convention this year. Mary is a member of the Westminster Choir School at Ithaca College and was initiated into Mu Phi Epsilon in November, 1931. She has been very active in school and sorority affairs and as a musician, she is exceedingly talented. We have elected Mary as our delegate because of her charming personality and keen ability in a business way.



MARY KEELEY



DOROTHY DRAHEIM

DOROTHY DRAHEIM, *Pi*
Business Delegate

Dorothy Draheim, '31, has been elected as our new president and delegate to our national convention at Kansas City. Dorothy has a vitalizing personality with high scholastic achievements. She has had appearances in both vocal and piano recitals and composed a hunting song which was recently performed. She graduated in Public School Methods, and holds a secretaryship for the head of the department. In Dorothy's fraternity life she was first chapter treasurer for two years. You will like her at convention. Yes, indeed!

TAMARA DMITRIEFF, *Rho Beta*
Business Delegate

Tamara Dmitrieff was born at Petrograd, Russia, receiving her first piano instruction from professors of Petrograd Conservatory. Coming to America in 1916 she first studied in Hartford, Connecticut. In 1921 she entered the Washington College of Music and received her piano teacher's diploma in 1923. Since 1925 she has been a popular member of the college faculty and a very active member of Rho Beta. She was awarded her artist diploma in 1930 and appears frequently on radio and concert programs.



TAMARA DMITRIEFF

FLORENCE OPHEIM, *Sigma*
Business Delegate

Florence Opheim, our president, will represent Sigma at convention in Kansas City this year.

Florence was an Applied Course student in the School of Music, Northwestern University, majoring in piano under Charles J. Hashe. She also received her teachers' certificate in public school music there. Additional work has been done with Jan Chiapusso and Jessie Willy. Her teaching connections have included Bush and North Shore conservatories. At present she is president of the Oxford Piano Teachers' Guild of America, Inc. Last, but by no means least, she has been president of Sigma Chapter for two years.



FLORENCE OPHEIM

RUTH HENELY, *Tau*
Business Delegate

Ruth Henely, our new president, is the lucky girl in Tau Chapter to go to the convention at Kansas City. After hearing Ruth play, her eleven years of hard work are revealed, for her performances are very fine with much style and beauty. This sister is outstanding in her performance as an ensemble player. For two years she has been a member of Tau Chapter's string quartette of which we are very proud and has made a great contribution musically to this group. We are glad to present our energetic Ruth to the delegates at Kansas City.



RUTH HENELY

EVELYN CONLEY, *Upsilon*
Business Delegate

Evelyn Conley of the Upsilon Chapter of the Cincinnati Conservatory of Music is to be the official delegate to the National Convention in June at Kansas City, Missouri. Evelyn has been an outstanding student at the Conservatory for three years and will receive her B.M. degree next year. She is a talented violinist and excellent pupil of Jean Ten Have. She is a first violinist of the Conservatory Orchestra and has taken part on many programs and concerts. Evelyn has been treasurer of Upsilon Chapter for two years and has taken a leading part in all the activities of the sorority.

VIRGINIA WIGLEY, *Phi*
Business Delegate

Virginia Wigley came to Phi Chapter from Akron University where she was a student for two years, and very active in musical affairs. She possesses a beautiful soprano voice and her vocal training has been entirely with Madame Rita Elandi, guest teacher at Mount Union. Virginia has the distinction of being the youngest choir director in Akron. She directs the choir at the Triplett Boulevard Baptist Church there. We are very proud of Virginia and hope that you will all learn to love her as we do.



VIRGINIA WIGLEY



ALMA GRAYCE MILLER

ALMA GRAYCE MILLER, *Chi*
Business Delegate

Alma Grayce graduated in piano from the Pennsylvania College of Music, Meadville, Pennsylvania, and studied coach accompanying in Rochester and at the Chicago Musical College, receiving a B.M. degree from the latter institution, majoring in composition. Many of her compositions have been performed by the Rochester Symphony Orchestra and the Buffalo Symphony. At the present time Alma Grayce is teaching piano, organ and theory at the Pennsylvania College of Music and is organist and choir director of the Congregational Church, Meadville.

MARGARET SNYDER, *Omega*
Business and Musical Delegate

Margaret Snyder, president of Omega Chapter for the coming year, is our business and musical delegate to convention. Margaret is a brilliant pianist, being a contest winner and appearing on many radio and recital programs. In fact, she had charge, for an entire year, of all the Drake University radio programs. But, best of all, Margaret possesses a radiant personality. Be sure to meet her! (*Margaret's picture appears with "THE TRIANGLE DAILY" Committee, page 175.*)



ESTHER STEARNS

ESTHER STEARNS, *Mu Alpha*
Musical Delegate

Mu Alpha Chapter elected both a musical and business delegate for attendance at the Mu Phi Epsilon National Convention.

The music delegate is Esther Stearns. She is president of Mu Alpha this year, is active in Delta Delta Delta and a member of the Simpson Madrigal Choir. She is also a very able pianist and will play a piano solo at the convention.

Janice Schreiber was elected as business delegate to the convention. She is the historian of Mu Alpha Chapter this year, an active in Delta Delta Delta, and a member of the Simpson Symphony Orchestra.

(Editor's Note—A few of the delegates sent in their own cuts which accounts for an occasionally larger picture.)

MRS. HEBER D. NASMYTH, *Mu Beta*
Business Delegate

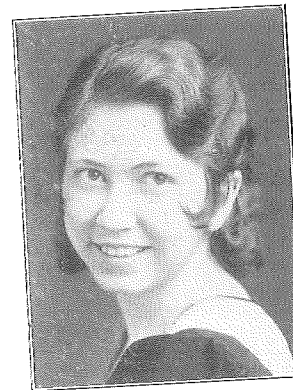
Mrs. Heber D. Nasmyth will be business delegate for Mu Beta Chapter at convention this summer. Mrs. Nasmyth is the oldest member of Mu Beta Chapter, having been initiated into Mu Phi Epsilon at Syracuse University in 1904 as a student, and in 1920 as a faculty member in Washington State College. She is a member of Kappa Alpha Theta, social fraternity; Mortar Board, women's honorary fraternity; and is at present a member of the piano staff at Washington State College.



MRS. HEBER D. NASMYTH

JOSEPHINE McDERMOTT, *Mu Gamma*
Business Delegate

Josephine McDermott was recently elected president of Mu Gamma. She will represent the chapter at the National Convention in Kansas City this June. Josephine studies piano with Floyd Robbins and voice with Howard Kirkpatrick. Her Junior recital in piano will be given May 11. The chapter thinks it has selected a very winsome new president—and girls, besides being musical and full of fun, she is athletic. Tennis is her hobby and you should see her dance!



JOSEPHINE McDERMOTT

GLADYS HOOVER HAVENS, *Mu Delta*
Business Delegate

Gladys Hoover Havens, business delegate, Mu Delta Chapter, has proved herself in concert and oratorio an artist of the highest type. She has appeared as contralto soloist with the symphony orchestras of St. Louis, Kansas City, Minneapolis, Detroit, and oratorio engagements have taken her repeatedly into the Southwest. She has traveled extensively with her husband, a past president of Rotary International, and last summer went with him to the convention in Vienna. She has served Mu Delta as president and program chairman.



GLADYS HOOVER HAVENS



GLADYS CRANSTON

VERA NARREGANG, *Mu Epsilon*
Business Delegate

Vera Narregang, who has filled the office of president since our charming Mildred Peterson left last fall, has been unanimously elected for the coming year. Her exquisite taste is only exceeded by her modesty, but a rare and sensitive tact will give our sorority an ideal leader. Her fine discernment for all that is best in music and understanding-sympathy with honest effort will no doubt endear her to the girls at convention as they have already commanded our affection.



VERA NARREGANG

MARY BOWER, *Mu Zeta*
Business Delegate

Mu Zeta's business delegate to 1932 convention—Mary Bower. She is tall, slim, with brown hair, hazel eyes, and a friendly smile; very capable and charming. She comes from Spokane, Washington. Has studied piano ten years in Spokane, voice two years with Mr. Howard Pratt at Whitman Conservatory, and two years of music theory at Whitman Conservatory and College, and assisted on a junior recital this spring. Her activities: Delta Delta Delta vice-president, Y. W. C. A. cabinet, glee club, journalistic staff.



MARY BOWER

GLADYS CRANSTON, *Mu Delta*
Musical Delegate

Gladys Cranston; born in England of English parents; educated in England; studied piano with Moissaye Boguslawski; studied singing and grand opera with parents, Ottley and Louie Cranston, internationally known in opera. Was for six years prima donna with the Royal Carl Rosa Opera Company in England. Now teaching voice, piano and song interpretation at the Cranston School of Music, Kansas City, Mo. Has large operatic, oratorio and song repertoire. President of Mu Delta Chapter.

HARRIETT FARR, *Mu Eta*
Business Delegate

Mu Eta is delighted to send Harriett Farr as the business delegate to the convention. Harriett has proved to be a popular and efficient president. She has appeared in voice and piano recitals this spring, besides making a tour as pianist throughout Central California, playing before schools and clubs.

In addition to Mu Phi Harriett is a member of Tau Kappa Kappa, Phi Sigma Gamma (modern language), and the All College Honor Society.



HARRIETT FARR



GLADYS COUTH HODGES

GLADYS COUTH HODGES, *Mu Theta Gamma*
Musical and Business Delegate

Gladys, who has a Master of Music degree, has studied abroad and concertized in this country and Mexico. She has had years of experience as a teacher. At present Gladys is on the faculties of the Incarnate Word College of San Antonio and the University Conservatory of Music, Austin, Texas. Gladys has served on the faculty of the music department of Michigan State College. She is a composer, and is a member of the Texas Manuscript Society.

LOLA FLETCHER, *Mu Iota*
Business Delegate

Lola Fletcher, a charter member of the chapter, is now entering her third term as president—an office which her experience, charming personality, and unswerving loyalty have enabled her to fill most efficiently and capably. Lola has studied with Louise St. John Westervelt, Frank LaForge and others, and holds degrees from Carthage College and Columbia School of Music, Chicago.

She is on the faculty of the Columbia School and is a member of the Musicians' Club of Women, the Chicago Artists' Association, and the Cordon. In private life she is Mrs. Stratford Colditz, and has a daughter, Mary Priscilla.



LOLA FLETCHER



REEFA TORDOFF

REEFA TORDOFF, *Mu Mu*
Business Delegate

Our president-elect for next year, Reefa Tordoff, will represent Mu Mu Chapter at the 1932 convention in Kansas City.

Reefa came to Kansas State College in 1931 as head of our piano department, with a fine background of study at Minnesota University, where she received her B. A. degree, and membership in Phi Beta Kappa. Also a year's study of piano with Tobias Mathay, and organ with Dr. Stanley Marchant in London, England.

Her loyalty and dependability in various activities in the department and in the chapter should make her an ideal delegate.

ALICE YEATON, *Mu Kappa*
Business Delegate

Mu Kappa is very proud of its business delegate this year. She is Alice Yeaton, wife of Lieutenant Ivan Yeaton, and one of the best all around girls you could ever find.

Alice is a senior in public school music, and in this line her work has been outstanding. Having been reared in Lawton, Oklahoma, she is a typical Oklahoma product; splendid sports-woman, thorough musician, and with lots of good, sound business ability.

HELEN MACEY, *Mu Nu*
Business Delegate

Helen Macey, president of Mu Nu, will represent her chapter at convention this year. Helen is a senior at the College of Music at the University of Southern California. She is majoring in organ, and studies with Dean Walter F. Skeele. She recently gave her senior recital in Bovard Auditorium and presented a program of delightfully varied compositions, ranging from Bach to some modern numbers by Clokey.

Mu Nu is happy to have Helen back with them again next year, as she is planning to continue work toward her master's degree.

HELEN MACEY



MARIE AMBROSIUS JOHNSON, *Mu Xi*
Business Delegate

President (incumbent) of chapter for two terms. Daughter of Herman Ambrosius, who was a pupil of Liszt; niece of Robert Ambrosius, 'cellist with Chicago Symphony for 25 years. Marie's musical activities began at the age of seven. A pianiste, accompanist and teacher, specializing in lecture recitals. Since 1922 she has been under the guidance of Ossip Gabrilowitsch. Gracious, capable, loyal and beloved.



MARIE AMBROSIUS JOHNSON

MARGARET CONWAY, *Mu Omicron*
Business Delegate

We are proud to send as business delegate Margaret, who is an excellent pianist and accompanist, and who—with her sister Pat, (a violinist)—performs quite often at the meeting of various musical organizations in Cincinnati. Margaret graduated from the College of Music in 1929 under Dr. Albino Gorno, and Post Graduated in 1931, winning the Springer gold medal.



MARGARET CONWAY

CHARLET CELLARS, *Mu Pi*
Business Delegate

Mu Pi is happy to be represented once more by Charlet Cellars, B. A. 1931, our very efficient president a year ago, and our president again for next year.

Charlet is an accomplished flutist and is a pupil of Ary Van Leeuwen, flutist of the Cincinnati Orchestra. She has played with the University Orchestra since her sophomore year in high school and was also flute soloist with the Singers Club for three years.



CHARLET CELLARS



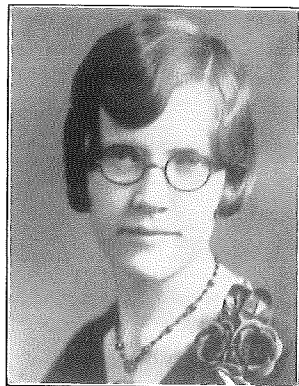
CELIA SMITH PHIPPS

CELIA SMITH PHIPPS, *Mu Rho*
Business Delegate

Mu Rho sends Celia Smith Phipps as business delegate. Celia was our first president, and has been elected president for next year. She received her diploma in piano from the College of Sisters of Bethany, and her degree in voice from Washburn College. She did post-graduate work with Madame Sigrid Lunde Souther at Washburn and Elwin Smith (Robert Elwyn) at the Denver College of Music. She has taught voice at the Denver College and at the Hiawatha Kansas Academy, and was soloist and choir director in churches in Topeka, Hiawatha, El Peno, Pueblo and Denver.

STELLA ANKER, *Mu Tau*
Business Delegate

Mu Tau Chapter is proud to send our new president, Stella Anker, to the convention. Stella is a 'cellist of unusual ability, and an untiring worker. She won first place for three years in State High School music contests. She is a pupil of Ella Colton, also a Mu Phi, and has studied with Hans Hess. Stella is generously contributing her time in solos, trios, and the university orchestra. She is a member of Alpha Lambda Delta. We want everyone at convention to meet and know her.



STELLA ANKER

IRENE GEDNEY, *Mu Upsilon*
Business and Musical Delegate

Mu Upsilon Chapter takes much pleasure in presenting to her sisters her musical and business delegate, Irene Gedney. Scholarship student at Albany Teachers' College and a full "A" student at Eastman; at Albany president of the Junior Monday Musical Club, accompanist for the Community Chorus, piano soloist for many recitals sponsored by musical clubs; radio accompanist and soloist at Schneckady, Albany and Rochester. Irene appeared recently at a weekly broadcast of the Rochester Civic Orchestra and has given many local concerts since coming to the Eastman school.



IRENE GEDNEY

MARIE DE KYZER, *Tau Alpha*
Business-Musical Delegate

Marie de Kyzer, lyric soprano, is well known as a concert, oratorio, church and phonograph singer. She was sent by Thomas A. Edison to be one of the first singers on the radio. As soloist, she traveled with the Minneapolis Symphony Orchestra. At present she is singing and teaching in New York City and New Haven, Connecticut, where she has large classes of pupils.

Marie studied in America and abroad. She has appeared as soloist with many well-known singing organizations throughout this country and Europe and has given many song recitals as well as lectures on voice culture.



MARIE DE KYZER

ETHEL MAE BISHOP, *Phi Beta*
Musical Delegate

Try to picture in your mind's eye a healthy, robust girl. Intelligent, a fine pianist, a most perfect accompanist. A girl who loves life, in the finest sense of the word, and whom everyone loves and respects. A girl who can look at the world with a straightforward, honest gaze—all in all, a perfect Mu Phi—that's our Ethel Mae Bishop, and we're proud of her and the honor she has brought to Mu Phi. She is three times winner of Juilliard Foundation local scholarships and is a graduate of both the MacPhail School of Music and the University of Minnesota. A girl to be justly proud of!



ETHEL MAE BISHOP

ELMA REITZ, *Phi Gamma*
Musical and Business Delegate

Introducing our charming president, Elma Reitz, whom we are sending to convention this year in double capacity. You will be missing something worth while if you fail to meet this diminutive lady with titian tresses, originally from Shamokin, Pennsylvania. Elma graduated from Bucknell College in piano and organ and has also two Peabody certificates—one in piano and one for voice. She is now doing church and radio work, vocal, in Baltimore. The editor's limitations as well as Elma's modesty necessitate the closing of this brief dissertation.



ELMA REITZ



Wis-
later
dent
dent
oice



HAZEL NICKELL

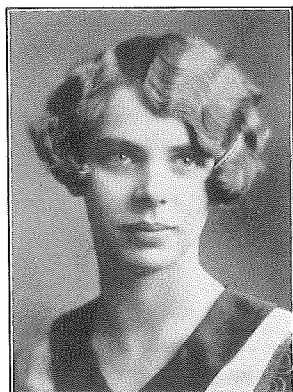
HAZEL NICKELL, *Phi Delta*
Business Delegate

Hazel Nickell is a junior in the College of Fine Arts of the University of Missouri. Before entering the university she studied violin with Professor Johannes Goetze in Moberly, Missouri, and Professor Russell Weber in Kansas City. She is now a pupil of Professor Rogers Whitmore. She is treasurer of Phi Delta Chapter of Mu Phi Epsilon, president of the Missouri chapter of Delta Gamma, and treasurer of the Junior League of Women Voters.

Mary Maxine Korfhage is Phi Delta's musical delegate.

EUNICE WAHLSTROM, *Phi Zeta*
Business Delegate

Eunice Wahlstrom is to be Phi Zeta's convention delegate. Eunice received her Bachelor of School Music, and Bachelor of Music degrees from Morningside College. Her major work in piano was under James Reistrup of Morningside College, and Arthur Poister of Redlands, California, with organ from Lucy Dimmitt Kolp of Morningside College. She was a charter member of Phi Zeta, and is to be president next year. Eunice is now an instructor of pianoforte in her Alma Mater.



EUNICE WAHLSTROM

VIRGINIA DAY, *Phi Eta*
Business Delegate

Dimpling with smiles is Virginia, but a little weighed down by her responsibilities as official delegate, also.

She is a Public School Music student at the college and studying piano with Mr. Lewis Richards. Her talent is often shown on programs of the chapter and in recitals given under the college auspices, as well as on what may be called the public platform.

She was initiated into Mu Phi Epsilon in January, 1932, and will be the president of the chapter in the academic year 1932-1933. We feel certain that the delegates to the convention will enjoy the friendship of this sister as much as her sisters in Phi Eta have done.



VIRGINIA DAY

REBA BENEWAY BROWN, *Ann Arbor Club*
Business Delegate

Reba was born in Lansing, Michigan; graduated from the high school at Port Huron, Michigan; had studied piano all through school. Attended literary college at University of Michigan. Specialized in dramatics. Was taken into Gamma Chapter in 1913. Married Robert K. Brown, who is professor of dentistry in the university in 1914. Has a son and daughter, and is taking work toward a degree. Taught dramatics in Richmond, Michigan, for two years. Has been president of Ann Arbor Alumnae Club for a year and a half. Will serve next year again.



REBA BENEWAY BROWN

ALICE ALLEN DRAYTON, *Boston Club*
Business Delegate

Alice Allen Drayton, pianist, our president-elect, is a graduate of New England Conservatory. High spots in her professional career are: Recitals in Boston, New York, Chicago, and two New England tours; soloist with various symphony orchestras including Boston Symphony and Boston Women's Symphony; music chairman, Massachusetts Federation of Women's Clubs; chairman, Professional Women's Club broadcasts; soloist for two seasons on the Mason & Hamlin broadcast; founder of Massachusetts Federated Choral Society and Boston Women's Symphony Orchestra.



ALICE ALLEN DRAYTON

GOLDIE TAYLOR, *Cincinnati Club*
Business Delegate

Cincinnati Club is very proud to send Goldie Taylor as convention delegate to the 1932 convention.

Goldie has her B. M. degree from Cincinnati Conservatory and is working on her master's degree. Two years ago she was a member of Harold Bauer's summer class in New York and while there lived at the club house and is very enthusiastic about returning. She teaches piano, is organist and choir directress of a church in Price Hill, gives monthly appreciation talks for one of the music clubs in our city, and has been program chairman as well as historian this year.



GOLDIE TAYLOR



LENORE MUDGE STULL

LENORE MUDGE STULL, *Des Moines Club*
Business Delegate

Des Moines Alumnae Club is very happy to send as business delegate Lenore Mudge Stull, a very accomplished pianist, organist and accompanist. She has studied with Percy Grainger and Albert Tufts, organist, of Los Angeles. She has been a great favorite with many concert artists. She has given sonata recitals with Arcule Sheasby, violinist, of Northwestern Conservatory, and Anthony Donato, of Rochester, New York; now head of violin department at Drake Conservatory. Lenore Stull is a member of Pi Kappa Lambda and Fortnightly Club of Des Moines, and is organist at Plymouth Congregational Church.

NELL GALLAGHER FOGARTY, *Des Moines Club*
Musical Delegate

Our musical delegate, Nell Gallagher Fogarty, hails from Alpha Chapter. She was a native of Covington, Kentucky, and perhaps it was only natural that she should have had her early musical education at the Cincinnati College of Music where she was a free scholarship pupil for six years and graduated with honors. She won the Springer gold medal for her artistic achievements. She has studied some in Chicago and New York, and has done considerable concert and recital work. At present she is teaching at home, and playing over the radio.

UNA FITZPATRICK CALLAHAN, *Dallas Club*
Business Delegate

Una Fitzpatrick Callahan is the business delegate from the Dallas Club to the national convention. Sister Callahan is one of our prominent sopranos here in Dallas. She was formerly on the faculty of the University of Texas Conservatory and music director of the St. Austin's Chapel Choir in Austin, Texas. She is a graduate of music at Salem College, North Carolina, and was a pupil in harmony and history with Dr. Charles S. Skilton, composer of Indian music. She has long been active in Texas music circles, and is well known to music lovers in the Southwest.



FLORENCE SCOVILL SMITH

FLORENCE SCOVILL SMITH, *Detroit Club*
Business Delegate

The Detroit Club delegate, Florence Scovill Smith, has been a Mu Phi builder. Graduating from the Detroit Conservatory in 1904 she taught there for two years. Delta Chapter, organized in March, 1905, sent her, a charter member, to the Cincinnati convention that year from which she returned national historian and with the next convention in her pocket for Detroit, which in turn made her national vice-president. Our club, organized in 1916 at her home, made her its first president. She is our president now.

ILA SINK, *Indianapolis Club*
Business Delegate

Ila Sink, delegate from the Indianapolis Club, has been an active Mu Phi since 1911. Has been treasurer and now is president of the club. Is active in the Expression and Aftermath clubs, musical and literary organizations, but is most interested in her home and daughter.

Ila never gets excited or worried, but does her work faithfully and well. Indeed she's a "bit of all right" and you'll enjoy meeting her at convention.



ILA SINK

SARA JANE SIMMONS, *Long Beach Club*
Business and Musical Delegate

Sara Jane Simmons became a member of Pi Chapter, at Lawrence College, Appleton, Wisconsin, in 1915 and graduated from Lawrence in 1916 with a major in voice.

In 1920 Sara Jane was a charter member and president of Pi Alumnae Club, which was later changed to Appleton Alumnae Club. She then came to California and in 1921-22 was president of the Los Angeles Alumnae Club and that year delegate to convention.

Sara Jane was also a charter member of our Long Beach Club and is this year our president and we expect to send her as our delegate to convention.

She has a lovely soprano voice and a charming personality, and is one of our best voice teachers. At present she is directing the Atlantic Methodist Choir in Long Beach.

BERNICE W. PARK, *Los Angeles Club*
Business Delegate

Bernice, a former member of Nu Chapter, is now president of Los Angeles Club. When she graduated from the University of Oregon in 1928 she was the youngest student ever to receive a B.M. degree. She has studied since with Arthur Friedheim and is now teaching piano. Bernice is also chairman of the music section of the Faculty Women's Club, U. C. L. A., and faculty adviser for Alpha Delta Pi. In addition to these duties she is secretary of the University of Oregon Alumni Association in Southern California.



BERNICE W. PARK



VERA PAYNE BROWN

VERA PAYNE BROWN, *Madison Club*
Business Delegate

Vera Payne Brown will represent the Madison Club at the Mu Phi Convention. Vera has been one of our most faithful and invaluable members, and we owe our sincerest gratitude to Lambda Chapter which initiated her. She is a graduate of Ithaca Conservatory of Music, where she was a pupil of Eric Dudley, and of the Cornell University School of Music where she studied with Hollis Dann. Vera has been very prominent in Madison musical circles, both as a contralto soloist, and as a choral director of great ability.

GRACE LECK WILLIAMS, *Minneapolis Club*
Business Delegate

Grace Leck Williams, pianist and organist, began her musical education at the age of seven. At twelve she gave two recitals at the Northwestern Conservatory of Music. Later she entered the University of Minnesota, graduating from the music department. After marriage she studied organ and took a course in choir directing at MacPhail School. Although busy bringing up two sons, she has held the position of organist and choir director at Knox Presbyterian Church for 18 years and has been an active member of the Thursday Musical for many years.



GRACE LECK WILLIAMS

EVA CLEMENT FRANKLIN, *New York Club*
Business Delegate

Eva Clement Franklin, Epsilon, experienced accompanist, ensemble player, piano teacher, was born in Ann Arbor where her father, Mr. Clement, conducted the college orchestra. In Toledo, Eva and her sister illustrated with two pianos their father's lectures on the symphony during the six years he conducted the Toledo Symphony. One of her many activities has been illustrating lectures with piano for Calvin Brainard Cady, and Thomas Whitney Surette. An active and loyal Mu Phi, she served while in Epsilon Chapter as president and secretary.



EVA CLEMENT FRANKLIN

JESSIE YUILLE YON, *Pittsburgh Club*
Business Delegate

The Pittsburgh Club takes special pleasure in announcing that their delegate, the president-elect, is Jessie Yuille Yon, a charter member and the first historian of Mu Phi Epsilon. Jessie studied voice at the Metropolitan College of Music with Professor Sterling and Elizabeth Mathias Fuqua. Previously she had studied for a year and a half in Glasgow, Scotland. Ever since her marriage she has been prominent here in church and concert work.



JESSIE YUILLE YON



JANE O'REILLY

JANE O'REILLY, *Portland Club*
Business and Musical Delegate

Member of Nu Chapter. Also an Alpha Phi. Member of Pro Musica. Jane taught the violin for four years at Linfield College, McMinnville. She was director of the Milwaukce (Oregon) High School Orchestra for three years and is a violinist with the Britz Opera Company. For the past two years she has played the viola with the Portland Symphony Orchestra. Her artistry on the violin is as exquisite as she, herself. She likes to ride horseback.

HELEN WILSON FERRIS, *Rochester Club*
Business and Musical Delegate

Treasurer for 1930-31 and president for 1931-32, Helen has been chosen musical and business delegate. A Rochesterian, she studied voice at Eastman School of Music under Arthur Alexander and Lucy Lee Call. When Mu Upsilon Chapter was installed, Helen became historian. She has been soprano soloist at Memorial Presbyterian Church in Rochester and at the First Methodist Church in Fairport, being choir director there as well. She is now singing at Brick Presbyterian Church in Rochester.



HELEN WILSON FERRIS



RUTH ROGERS JOHNSON

RUTH ROGERS JOHNSON, *St. Louis Club*
Business Delegate

Ruth Rogers Johnson is president of the St. Louis Club and is a pianist who received her B. M. degree at the Forest Park University under Ernest R. Kroeger, at the age of 15 years. She was organist at the Presbyterian Church at Sheraton, Iowa, for five years before she was married and had a large class of piano pupils there. She now has an apt pupil in her son, Roger, and an admiring husband. Ruth is actively engaged in club work in St. Louis and has held executive offices in many of them, as well as being in demand as soloist and accompanist. She has also been treasurer, recording secretary and vice-president of the St. Louis Club.

WINIFRED FORBES, *San Francisco Club*
Business Delegate

Winifred Forbes, Zeta, graduated at the American Conservatory of Chicago, continuing study under Leopold Kramer and Leon Sameini. She has also coached under Michel Piastro and Kathleen Parlow in San Francisco. A long and successful teaching career has taken Winifred to the universities of South Dakota, Illinois, Oregon and Iowa, and to Whitman College. Playing before Eugene Ysaye in Portland, Winifred was warmly commended as an artist. She appears on many programs in the San Francisco Bay district and is prominent in the musical club life of Berkeley, California, where she lives and teaches in her own charming studio-home.



WINIFRED FORBES

PERSIS HORTON, *Seattle Club*
Business Delegate

The Seattle Club is happy to send Persis Horton, its president, as convention delegate. Persis is a graduate of the University of Washington and was initiated into Tau Chapter in 1915. She attended Mills College and later studied with Kate Chittenden in New York and Tobias Matthay in London. She is an accomplished pianist, both as soloist and teacher. Besides Mu Phi her activities include Ladies Musical Club, Pro Musica and Mills College Club.



PERSIS HORTON



FRANCES G. HAMLIN

FRANCES GOODEMAN HAMLIN, *Toledo Club*
Business Delegate

Frances Goodeman Hamlin, a past president of Toledo Club, and who proved so efficient we are electing her again also as our delegate to convention. She recently finished serving three successful years as president for the Eurydice Club, which is the only ladies chorus in the city, so is well prepared to lead us through these hard times. She has a dandy husband and two fine boys and you will all enjoy meeting Fran at convention.



EDITH ATHEY

EDITH ATHEY, *Washington Club*
Business and Musical Delegate

Edith Athey studied piano with Clara Ascherfeld, Peabody Conservatory; Arthur Rosenstein and Harriet Ayer Seymour, New York City. She studied organ with Otis Swett, Dr. J. W. Bischoff, Richard Keep Biggs and Conrad Bernier. She received her bachelor of fine arts degree from the Washington College of Music in 1928. Edith taught music in the Washington schools until 1929. She now has a large class of piano pupils as well as a class of organ pupils at the Hamline School of Music. She is organist at Hamline Methodist Episcopal Church, secretary of the District of Columbia Chapter, American Guild of Organists, and president of the Washington Alumnae Club of Mu Phi. Edith was the first civic organist in the national capital.

BETTY KNOX, *Mu Chi*
Musical Delegate

Betty Knox, corresponding secretary and musical delegate from Mu Chi, will receive her B.M. degree in June, majoring in piano. Betty has had many public appearances as a pianist, having played in concert ever since she was six years old. She is also a professional accompanist and sang the coloratura lead in Cadman's Golden Trail last year under the composer's direction. Her campus activities include membership in Delta Zeta, Schubert Study Club and Van Katwijk Club.

(Material arrived too late for correct alphabetical listing.)



NATIONAL CLUB HOUSE



WITH the new year came a perfect avalanche of new girls into the Club House until we now have twenty-three resident-students. It is very jolly for us all and very gratifying for the National Council to know that the Club House is such a popular place.

The most important "house" event was our recent musicale, a review of which appeared in the *New York Evening Post*:

ST. PATRICK'S MUSICALE

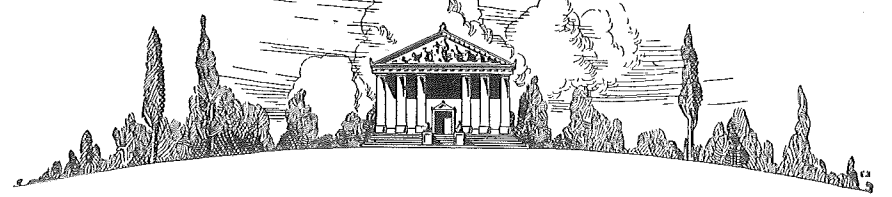
"The resident members of Mu Phi Epsilon gave their annual Saint Patrick Musicales last night at their national clubhouse in West Seventy-fifth Street. Barbara Custance, who hails from British Columbia, played Beethoven's Sonata, opus 36, No. 2. Janie Ellwood, a West Virginia girl, displayed a rich contralto voice in songs by Foudrain, Watts and Johnson. Byrd Elliot from Seattle, a Juilliard Music School pupil, played violin pieces by Dvorak, Kreisler, Paganini-Kreisler and Rachmaninoff-Press. Mary Ina Conner, a Tennessee lass, was her accompanist. Dorothy Bowen, a soprano from the Windy City, showed her dramatic as well as musical ability in three songs, an aria from Adriano Lecouvreur, by Cilea; Veniteto a veder l'mi, piccino, by Respighi, and La Castellana, by Penacchio. Geraldine Sturtevant, well-known accompanist, was at the piano. Harletta Thrasher from Indiana, a pupil of Carolyne Beebe, played pieces by Scriabine and Debussy and Rachmaninoff's arrangement of Moussorgsky's lively Hopak.

The last part of the program was a minstrel show that undoubtedly afforded as much fun for the girls participating as it did for the delighted spectators. Misses Fogg, Melba Thrasher, Otto and Harletta Thrasher were particularly pleasing in solo parts."

Patrons and Patronesses included many well-known New York musicians:

Mr. and Mrs. Solon Albert, Carolyne Beebe, Mr. and Mrs. A. C. Bierce, Mrs. Inez Brown, Dr. Hollis Dann, Mr. and Mrs. A. J. Franklin, Dorothea Flexor, Mr. and Mrs. Yeatman Griffith, Mrs. William Gustafson, Mr. and Mrs. Edwin Hughes, Mr. and Mrs. Earl Hunt, Mr. and Mrs. Josef Lhevinne, Mr. and Mrs. Frank LaForge, Queena Mario, Mr. and Mrs. George Meader, Mr. and Mrs. Eduard Naumann, Margaret Sherman (Mrs. A. A. Reading), Mr. A. A. Reading, Mr. and Mrs. Gilbert Rodgers, Dr. and Mrs. John Ross, Mr. Frederick Schlieder, Dr. Sigmund Spaeth, Mr. and Mrs. Sigismond Stojowski, Mrs. George Hotchkiss Street, Mr. and Mrs. Laurence Sturtevant, Edna M. Wederhoff, Mr. and Mrs. John Worley, Mr. and Mrs. William A. C. Zerffi.

CHAPTER AND CLUB LETTERS



The Editor regrets the necessity of cutting down many of the following letters to the three-hundred-word limit specified.

GAMMA

University of Michigan
Ann Arbor, Michigan

IT'S high time you were informed of Gamma Chapter's 1931-32 activities—and a very successful year it has been, we are proud to say.

Our first bow last fall was a tea, to which all the new and unaffiliated girls were invited. On November 12, the actives and local Alumnae Club had a joint buffet supper and musicale in the Cave Room of the Michigan League, commemorating Founders' Day. The alums furnished the eats and the actives, the program—the alums turned out to be as good cooks as they are musicians so a great feast was enjoyed by all.

Our next party was a delightful Christmas supper, December 12, at the home of Mrs. Alfred H. White.

February 17 was a gala evening for the Gammas. We gave our formal musicale in the ballroom of the Michigan League, for about 300 guests, friends, alumnae and faculty members. Mrs. Laura Littlefield and Louise Nelson gave an excellent program, doing both themselves and Mu Phi the greatest credit. The decorations were so artistically arranged that it actually made that huge ballroom look cozy and inviting. After the program, light refreshments were served, and everyone said they had had a wonderful time. I wish you all might have shared it with us.

Finding our coffers rather depleted, we gave a benefit bridge party, March 19, in the Michigan League, which did help our financial status, materially. Our newly elected girls

were guests at this party. There are five of them: Helen Bentley, Marion Works, Mardelle Carder, Virginia Ward and Margaret Swetnam. Gamma Chapter is having quite a struggle under the honorary status to compete with the other musical sororities in the school so we are extremely happy to initiate eight girls this year, and hope this indicates a further recognition of us as an honorary organization. All of which brings me to our next affair—initiation and the formal banquet, April 2.

GWENDOLYN PIKE.

DELTA

Detroit Conservatory of Music
Detroit, Michigan

WE'RE proudly introducing seven new members in this issue—Gladys Carpenter, Frances Carruthers, Lillian Crothers, Cecelia Hemstreet, Alice Polkinghorne, Helen Ramage and Marjorie Robbins. They were initiated on the day we had the honor of entertaining Helen Mueller, our province president. We're sorry we didn't have time in which to get better acquainted with Helen. That evening we also gained two new patronesses—Mrs. June Wells and Mrs. Osceola Pooler.

Our next meeting was a social gathering at Florence Molloy's. We played "Bunco" and had a grand time generally. Our theatre party at the Civic was so much fun we hope to hold another one soon.

There have been two study meetings since the last TRIANGLE. At the first, Gladys Carpenter and Leona Hahnke gave a very interesting program. The second was a joint meeting with the Alumnae Club at which Dr. Ray Heaps gave an illustrated talk on Green Pastures. The singing of Negro spirituals by a

quartette lent an appropriate atmosphere. Our April program will be given by the new members.

What a lot of business we had to attend to at the March meeting! First, I know, you'll all be glad that Vera Mark is going to be our delegate to convention. Jennie Coman is alternate, but we're hoping she'll go, even if not officially. Also, we want you all to meet our new president, Florence Molloy, who I'm sure will show up at Kansas City. Our other officers are: Vice-president, Wilma Harwood; treasurer, Mary Quello; recording secretary, Helen Ramage; corresponding secretary, Jennie Coman; chorister, Olive Merz; historian, Winifred Wagner (I can just hear Helena groan); warden, Helen Lehmann; chaplain, Cecelia Hemstreet; alumnae secretary, Vera Mark.

I must stop and go sell some tickets for the Bridge to help along our scholarship fund.

WINIFRED WAGNER.

EPSILON

Toledo Conservatory of Music Toledo, Ohio

OUR annual initiation and banquet was an event of March 5 in the Commodore Perry Hotel. Our new sisters are: Mary Huggins, concert-pianist, who is in charge of the Juilliard Extension work in the Toledo Museum of Art; Elizabeth Walker, 'cellist; Dorothy Jackson and Lois Bacon, sopranos. Guyneth Redman, our president, was toastmistress. The toasts were built around the theme Tre Corda; the first string representing the alumnae, the second string the patrons and the third the actives. These beautiful toasts were given by Frances Hamlin, Mr. Otto Sturmer, and Estella Moll. Following the banquet Prof. I. M. Simple (Mathilde Burns) and Company entertained us with several acts of vaudeville. Tears of laughter gave evidence that their efforts were greatly appreciated. And by the way, Cincinnati has not the only professional saw-player in the world! Our own versatile "Tillie" Burns is very accomplished on this instrument.

Esther Burnworth surprised us by becoming Mrs. Byron West and moving to Kentucky. Esther was very active and we miss her a lot.

Mabel Brady was guest artist on our February program. She sang an aria by Parker and a modern group. Eliner Riedel played piano selections by Debussy, Liszt and Moskowski. Florence Fisher played the Lalo Symphonie Espagnole and a group of dances by deFalla.

In March, Mrs. Lynnel Reed gave us a most interesting paper, Our Musical Heritage. Nancy Robinson played the Schumann Toccata and numbers by Dohnanyi, Ruth Earhart played the Franchomme Concerto for 'cello and several shorter numbers. Helen Lease Sloan sang an aria by Meyerbeer and a modern group which included Irish Song by our sister, Charlotte Ruegger.

HELEN DREYER.

ZETA

DePauw University School of Music Greencastle, Indiana

ZETA has been busily engaged in various kinds of musical activities this semester. On February 11, Jane Johnston Burroughs of Kappa Chapter gave a lovely voice recital in Meharry Hall. She was accompanied by Margaret Baille Steinhart. We were indeed proud of Jane since she formerly was a member of Zeta Chapter.

On February 18 Zeta presented the cantata, Slumber Songs of the Madonna, by May Strong, for chapel exercises. For the past four months we have devoted a part of our business and social meetings to the study of this cantata and we feel that it was a huge success. Dean McCutchan directed it for us and Edna Bowles, 'cellist; Louise Walker, violinist; Virginia Knaub, pianist, furnished the accompaniment.

On March 11 a tea for junior and sophomore women of music school was held at Rector Hall. This gave us an opportunity to become more acquainted with prospective material for Mu Phi.

At the last business meeting Betty Cherney was selected as convention delegate. We feel confident that Betty will derive much benefit from the convention and will bring many interesting comments and experiences back to us.

Louise Palmer Walker, one of our faculty

members and also a Mu Phi, gave a very interesting recital on January 19. Louise spent last summer in Europe studying violin.

IRMA G. DIRKS.

THETA

Kroeger School of Music St. Louis, Missouri

THE following is the order of events since January the 1st:

January 6th—A very enjoyable breakfast bridge was given at the Chase Hotel. About fifty members and guests were present.

January 13th—Dr. Kroeger most hospitably opened his house to us for the audition for prospective members.

January 17th—A tea at our president's house on this date was a very pleasant and successful affair.

January 20th—A lecture by Cecile Coombs, who is supervisor of music in East St. Louis schools. She spoke on Methods in Public School Music.

February 17th—Another very interesting lecture by Dorothy Gaynor Blake, the subject of which was, How I Compose. Dorothy dealt with psychological facts which she uses in composing for children.

February 21st—A tea at the house of Josephine Pipkin.

March 7th—The Initiation Ceremony and Banquet for our five new members—Mary Friess, May Guidry, Mable Henderson, Dorothy Miller, and Jean Williams—and was held at the Chase Hotel. The place cards for the banquet were decorated with a map of the country of Mu Phi Epsilon and Theta city, and this idea was carried out in the speeches. Pearl Johnson spoke as an established resident of Theta City, Cecile Coombs as a first year resident, and Lavina Gauen on Looking Forward. Toastmistress, Erma Welch. Speech of welcome, June Loevy.

March 15th—A program of ensemble music in which every member of the chapter took part.

March 30th—A lecture, How Music Is Printed, by Carl W. Kern.

We anticipate happy meetings in June.

NELLIE THOLEN.

IOTA ALPHA Chicago Musical College Chicago, Illinois

IN spite of the depression we have had splendid audiences at our series of concerts. Our fourth program was given by Phyllis Ferguson Hoyt, composer-pianist; Edith Trewartha, soprano, accompanied by Erma Rounds; Gretna Spokesfield, pianist; Isabel Zehr, contralto, accompanied by Grace Seiberling; and a most unusual ensemble of four violins with Linda Sool Steindel, Anah Webb, Anna Marie Gamble and Marietta Gihle.

Our fifth program was presented March 16th with the following artists: Mildred Huls and Berenice McNab, two-piano group; Ethel MacDonald Swindelle, contralto; Margaret Sweeney, harpist; Loretta Leidell, soprano; Mae McHugh, pianist; and a vocal quartet consisting of Juliette Burke, Elizabeth Hollingbery, Ethel Swindelle and Theresa Huening Schmidt. The first five of our series have been presented in the beautiful ballroom of the Illinois Woman's Athletic Club.

On April 20th our chapter will entertain at a spring luncheon, followed by a musicale, at the Belden Stratford. As the climax of our year's activities we shall present Rudolph Ganz and Edward Collins in a two-piano recital, one Sunday in May. We cannot express our great appreciation to these excellent artists who are donating their services to enlarge our scholarship fund. We hope to have a sold-out house and make it the big event of our year.

We do hope that you Mu Phis in southern California will have a chance to meet our president, Solveig Shevelson. We all hated to lose Solveig even for a few months, but what chance did we have of holding her here when a new granddaughter was the attraction in the West? Linda Sool Steindel, our vice-president, has taken over the presidential duties with such efficiency one would think she had held the office for years.

We want to send a large crowd from Iota Alpha to the Kansas City convention, and we wish the entertaining chapters the utmost success.

ELVA GAMBLE.

KAPPA

Arthur Jordan Conservatory of Music
Indianapolis, Indiana

THE big concert, which consisted of a ten-piano ensemble, assisted by Marie Dawson Morrell, artist violinist, and Robbye Cook, soprano, and winner of one of the Mu Phi scholarships, is over, and oh my! what a huge success! Every seat was taken, and we cleared \$500 from the ticket sales. The Indianapolis Star, one of our big daily papers here, gave us a wonderful writeup the morning after the concert, and said the concert was one of the biggest and best musicales ever put over by a music club in our city, and was certainly worthy of repetition.

Jeanette Harris entertained us at her home January 27. Rea Bauer gave a paper on The Life of MacDowell, and Marcia Clapp talked on The MacDowell Colony at Peterboro, having been a student there last summer. Marcia gave a very interesting talk and a detailed description of the colony. Helen Hollingsworth gave a talk on The National Camp at Interlochen.

We held election of officers at the last business meeting, and Leone Kinder Richman is president; Alberta Gaunt, vice-president; Ernestine Fleming, recording secretary; Ramona Wilson, corresponding secretary; Jeanette Harris, treasurer; Adah Hill, historian; Harriet Payne, warden; Frances Wishard, chorister; Zelma Hicks, alumna secretary; Selma Searcy, chaplain.

Leone Richman was elected business delegate to the sorority convention.

We are looking forward to an interesting time Tuesday evening when our province president, Ethel Hayward, of St. Louis, will be our guest. We are planning to initiate two girls at the home of Maud Titus, followed by a "pot-luck dinner," a business meeting, and a program by the girls.

GEORGIANA ROCKWELL.

LAMBDA

Ithaca College
Ithaca, New York

DOROTHA MAIER visited us for a few days last month and how glad we were to see her! She is minister of music at the Pres-

byterian Church in New Brunswick, New Jersey, and finds her work most interesting.

Alma Wilcox has accepted the position of supervisor of music at Cobleskill, New York. Helen MacNamara has been teaching there for the past three years.

Hester Foster is very busy in Carbondale, Pennsylvania, with church music and in April intends to go to Steubenville, Ohio, to direct the music in the Methodist church there.

On Wednesday evening, March 16, Dorothy Beard Little and Edna Kelly were initiated into Lambda Chapter.

A very interesting organ program was presented by some of the students in the Westminster Choir School on March 9 in the Methodist Church. Prelude and Fugue in F Major was played by Cecil Jacobson; Divertissement Cortège by Louis Vierne was played by Mary Keeley; Organ Concerto in D Minor by Handel was played by Margaretta Shanaman. The last selection included four movements—*adagio*, *allegro*, *larghetto*, *allegro* (*quasi presto*).

Jeanne King, Marguerite Saylor, and Eula Transou, seniors in the choir school, are presenting their senior voice recitals this month. These come as a part of the curriculum work to be accomplished in the senior year. Their programs include many sacred and secular selections with a wide variety of composers represented.

We were very sorry that Ada Britton's visit to Ithaca and Lambda chapter was postponed from the original date, but we were surely glad when she did come and how all of us wish that we might go to convention after talking about it so much!

XI

University of Kansas
Lawrence, Kansas

IN spring a young man's fancy may turn to love, but a young woman's fancy, particularly if she is a Mu Phi, turns to recitals. I'll tell you a little about the three of the ten which have been given.

Caroline House, pianist, began the season, February 8. She played compositions by Chaminade, Dobnanyi, Burleigh, Scriabine and others. In her last number, Concerto (Moszkowski), Professor Taylor assisted her on the

second piano. Caroline was assisted by Blanche Sams, soprano, who is one of our recent members. She sang selections from Bemberg, Schubert and Gounod.

Ruth Spindler appeared next, March 1. She presented numbers by Scarlatti, Bach, and other older composers. In her last number, Concerto (Grieg), Professor Preyer assisted her on the second piano. Ruth gave her senior recital in organ last year and has been organist of the Methodist Church here for several years.

Enterprise Knox, soprano, gave her recital March 21. It was most artistic and a triumphant success.

Other Mu Phis to give recitals this season are: Evelyn Swarthout, pianist; Dorothy Pierce, pianist; Dorothy Moore, pianist; Helen Stockwell, violinist; Faire Voran, pianist, and Kathleen McMorran, pianist; Lucile Gabel, pianist.

Clarice Painter, our province president, was here just a short time from February 23 to 24. Tuesday afternoon we met at Swarthout's home and Clarice Painter, Dean Swarthout, Dean Agnes Husband, Irene Peabody, and Alice Moncrieff were our guests. We held our regular business meeting earlier in the afternoon and followed that with a musicale and tea.

That same evening Clarice met with the active chapter and we held initiation for three new members: Blanche Sams '33, Alice Gallup '33, Helen Heaston '33. Helen Heaston was elected president of the Women's Self-Governing Association for next year, which is an honor we are proud to have won by a Mu Phi.

KATHLEEN MCMORRAN.

PI

Lawrence College
Appleton, Wisconsin

TALL tapering white candles, silver candelabra, just a touch of spring flowers in a remote corner, dignified formalities, dainty programs, beautiful voices, beautiful music, enthusiastic applause, and then finale—that was

our latest mile-stone, a recital. In keeping with previous practice the more important and formal occasion was followed by moments of cheerful relaxation, this time in the form of a midnight lunch with the natural unrestrained joy that follows performances.

Our inspection came last on Helen Mueller's list—perhaps unfortunately for us because we had to live up to the excellence of all the chapters that she had visited before mid-semesters, plus the fact that she might likely be more severe with her own chapter! This event, too, was followed by a "get together" inspired directly by Helen Mueller herself.

Mu Phi of Pi are still reveling in the success of the Lawrence A Cappella Choir which appeared on Appleton's Artist's Series March 31.

GENEVIEVE KLENNKIS.

RHO BETA

Washington College of Music
Washington, D. C.

RECENT sorority programs include a program at the Home for Incurables at which Betty Gray, Margaret Oxenburg, Grace Powell and Catherine Benson gave pleasure to the shut-ins. Our broadcast of music by French composers on the Federation of Music Radio Travelogue series was well presented by Tamara Dmitrieff, Betty Gray, Wilhelmina Amiss and Sara Becker. The twilight musicale at the Y. W. C. A. on March 13 was a beautiful program of sacred songs by Mary Burnett, violin selections by Wilhelmina Amiss and piano solos by Catherine Benson.

Our benefit concert at the Cleveland Park Congregational Church on March 14, arranged by our president, Betty Gray, and presented by Aurelia Beck, contralto; Betty Gray, soprano; Tamara Dmitrieff, pianist, and Wilhelmina Amiss, violinist, added a good sum to our treasury. The accompanist for all of these programs was Catherine Benson.

Ada Britton, our province president, was our guest on March 10 and 11, and the reception held in her honor at Sylvia Meyer's lovely old Georgetown home, was another of our enjoyable affairs with the Alumnae

Club. The Rho Beta girls who appeared on the program were Mary Burnett, Margaret Oxenburg and Grace Powell. The following evening at Betty Gray's home we were happy to welcome into the chapter Esther Strite, contralto soloist of Petworth Baptist Church. Betty served delicious refreshments and we all enjoyed our visit with Ada.

Individual activities include performances at the Friday Morning Music Club, Arts Club, Twentieth Century Club, Congressional Country Club, Women's City Club by Catherine Benson, presentation of the operetta *Pied Piper of Hamelin*, by the Girl Reserves, directed by Mary Burnett, piano duets by Sara Becker and Sara Wollock at the Jewish Community Center and solos at the Maryland State Society by Esther Strite.

CATHERINE BENSON.

SIGMA

Northwestern University
Evanston, Illinois

REALLY, there is so much talk about convention that it is a bit difficult to get down to chapter doings. However, Sigma has some news.

Easter vacation being over, we are settling down once more for the final struggle. One event on the social calendar bids fair to be a lovely one. The Sigma girls are giving a musical tea at the Georgian Hotel, Sunday afternoon, April 10, in compliment to the honor students in the school of music, our patronesses and musical friends.

Grace Parmele, soprano; Marie Briel, organist; Gladys Gilderoy Scott, contralto, and Lydia Koch, organist, presented a musicale on Sunday afternoon, February 21, at the Wilmette Baptist Church, which was truly a beautiful program. This musicale was open to the public and judging from the size of the audience these programs are highly appreciated.

Mae Strong gave a recital at the school of music Monday evening, March 21. Numerous reports say it was lovely, but we'd know that, regardless of reports.

Florence Opheim, our president, will be our delegate at the convention in Kansas City this

June. We feel so important to think that we can boast about a national officer, too. Marjorie Gallagher Kenny will also represent Sigma.

Word has been received of the arrival of a baby boy at Edith Bryant Viant's home, some time in January. Well, if he can't be a Mu Phi perhaps he will turn into a Phi Mu Alpha! Lucile Magill Weems writes that her cherub, who is a year old, now demands much of her time, but Lucile still manages to find time to sing.

FLORENCE THOMPSON BRADNER.

TAU

University of Washington
Seattle, Washington

WHAT a busy year, this 1932! Programs, teas, banquets, but best of all, new sisters. First, we grew by nine and now by six for we are preparing to initiate the second group. On December 13 we initiated Lucille Baker, Ilo Carey, Mildred Flynn, Ingrid Jacobsen, Florence Merriam, Mary Louise Schroeder, Frances Sibley, Elise Tiffany and Jane Wilson.

Our young hopefuls, who have just been elected, are Berenice Cambell, Adelaide Cole, Consuelo Houtz, Beatrice Kauffman, Madge Kuhworth and Lydia Pearl. We are extremely proud of our new sisters and their talent.

We have given all but two of our series of six chamber concerts. Our performances have included solos, quartettes, quintettes, and even a symphony by Borodin. Practically the entire instrumentation came from within Tau Chapter and Phi Mu Alpha, the men's musical fraternity at Washington.

Grace Ellis, last year's vice-president of our chapter and one of its most loyal members, has brought honor upon herself by becoming a member of the scholastic honorary, Phi Beta Kappa. Grace was graduated from the university in December. She is now living at her home in Wenatchee.

Our most recent event resulted in the casting of our vote which resulted with some fine looking, healthy new officers just two weeks old. Smile for the ladies, girls. Ruth Henely will wield the gavel for the coming year. She

also rates a trip to Kansas City. We wonder what for? The other officers are: Vice-president, Ingrid Jacobsen; recording secretary, Mary Louise Schroeder; corresponding secretary, Florence Merriam; treasurer, Jane Wilson; historian, Frances Sibley, and Chorister, Mildred Flynn.

Alice Sorenson gave an interesting piano recital on February 21.

Ruth Eichelberger is another pianist who gave a recital recently. Both girls are students of Ruth Bradley Keiser, as well as being piano teachers of distinction themselves.

WINIFRED LEIGHTON.

UPSILON

Conservatory of Music
Cincinnati, Ohio

THE girls of Upsilon Chapter have been working hard this year. Helen Brooks, pupil of Madame Petrovic, sang the Bell Song from *Lakme*, by Delibes, last month with the Conservatory Symphony Orchestra; and Virginia Morrison, pupil of Daniel Ericourt, played the Mozart A Major Concerto with the orchestra in the April concert. Helen, who is staff coloratura soprano at W. L. W., also had leading roles in *Robin Hood* and *Marriage of Figaro*, which were given by Conservatory Opera students.

We are delighted with the success of our new member, Mary Phillips Street, pianist and pupil of Daniel Ericourt. Mary was awarded the Clara Baur scholarship from the Conservatory.

Marguerite Zeiner and Evelyn Conley, violin students from the class of Jean Ten Have, appeared on a program in March.

Lucille Emerick, pupil of Jemmie Vardeman, gave a piano recital on April 14 in the Conservatory Concert Hall.

Anna Louise Kautz, pianist and pupil of Jemmie Vardeman, gave a program with Belva Kibler, contralto, and pupil of Madame Petrovic, in Charleston, West Virginia, recently.

Eleanor Moore, scholarship pupil of Madame Petrovic, is contralto soloist at Walnut Hills Christian Church.

All of us are looking forward to our formal recital in May and, of course, the convention in June.

VIRGINIA MORRISON.

PHI

Mount Union College
Alliance, Ohio

MU PHI girls at Mount Union have often contributed their talents to the chapel music programs. Fayne Braucher, Marie Schulte, and Evelyn Stahler, have each given a program of piano solos. Virginia Wigley and Janet Thomas have sung more than once and Marie also plays the organ every day.

Fayne is kept busy these days, for besides the various outside demands on her time, her senior recital date is near at hand. We are looking forward with pleasure to her program.

One of our latest initiates, Virginia Wigley, is doing a fine piece of work in her home town, Akron, Ohio, in conducting both the regular choir and a junior choir at the Triplet Boulevard Baptist Church there. She is the youngest choir director in Akron.

Evelyn has been the accompanist for the soloists appearing with the Alliance Symphony Orchestra, December 5 and March 6. She also is accompanying with the orchestra, the oratorio, *Elijah*, which will be presented at Mount Union College at commencement time.

The various clubs in Alliance afford many opportunities for Mu Phi girls to assist in music for the community. Most of us have appeared on programs for the Music Study Club and the College Woman's Club. Rose Boyer, Janet and Marie took part in a delightful George Washington program at the Woman's Club. This was given in costume and featured American music of Washington's time.

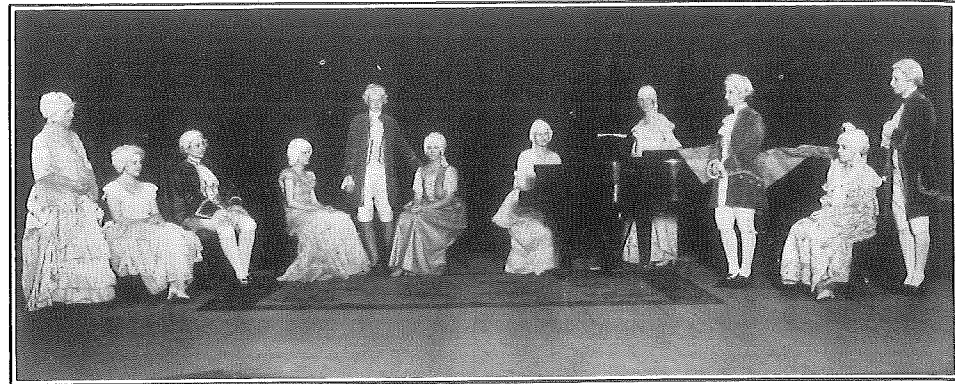
Madaline Tussing is at present interested in a project of which I hope to be able to tell you more later. Here and there along the line she appears with her violin, and sometimes she accompanies others on the piano, but her real brain child remains to be proved.

Greetings and best wishes to all.

OMEGA

Drake Conservatory
Des Moines, Iowa

IN FEBRUARY we were fortunate in having as a guest, Clarice Painter, our province president. During her visit we gave a program in chapel, in commemoration of George Washington's two hundredth birthday anniversary. The setting was the drawing room of George Washington's home where a group of his friends had met to honor him. Period costumes and furniture added to the effectiveness of the scene and music of American composers of the time was featured. Everyone agreed that our efforts rewarded us with the nicest program we have given in years.



The program included a Sonata by Alexander Reinagle, 1756-1809; Hail Columbia by Phillip Phile, 1750-1793; a fantasia on Maryland, My Maryland; and The Glorious Name of Washington (an 18th century air).

Characters in the program were patronesses and active members of Omega Chapter:

George Washington.....	Maxine Speaker	Julia Ward Howe.....	Helen Sailer
Martha Washington.....	Martha Capps	Lucy Rowson.....	Lenore Mudge Stull
Francis Hopkinson.....	Gertrude Shloss	Betsy Ross.....	Doris Hoff
Nellie Custis.....	Margaret Snyder	Celia Morris.....	Florence Swett
Mary Broadhurst.....	Margaret Corbin	Gilbert Fox.....	Leona Gabrielson
Ann Hodgkinson.....	Martha Hitchcock	Phillip Phile.....	Helen Luin Burgess
	Alexander Reinagle (accompanist).....	Juliette Redfern	

There were a number of luncheons and teas in Clarice Painter's honor, given by both active and alumnae groups. She witnessed the initiation ceremony for two new Mu Phis. They are Miriam Hockett, violinist, and Aletha Roop, pianist.

On March 8 we met at the home of Mrs. Paul Stoye, one of our patronesses, for a German musical. Those appearing on the program were Doris Hoff, Virginia Horton, Florence Swett, Helen Burgess, Margaret Corbin, and Juliet Redfern. Mrs. Stoye served lovely refreshments.

MU ALPHA
Simpson College
Indianola, Iowa

MU ALPHA Chapter was honored with the visit of Clarice Painter, province president, on February 19. That evening we entertained Miss Painter and some of our alumnae at dinner. After dinner we held our initiation ceremony at the home of Viola (Rich-

ards) Simpson, after which a program of musical numbers was given by some of our chapter members at the home of Mrs. Ray McCoy, one of our patronesses. The program consisted of piano and vocal numbers.

Simpson Conservatory presented Maxine Stetzler, pupil of George W. Weiler, in her senior piano recital on March 5.

The election of officers for the coming year,

and the delegates to the convention was held at our regular meeting on March 17. The following people were elected:

Esther Stearns, musical delegate to convention; Janice Schreiber, business delegate and president; Katherine Liggett, vice-president; Phoebe Penn, treasurer; Mary Ashby, recording secretary; Alice Mae Chester, corresponding secretary.

The election of the other officers was postponed until the beginning of the next school year because of the uncertainty of some of our actives returning to school in the fall.

Simpson Conservatory presented Janice Schreiber, pupil of George W. Weiler, in junior piano recital, March 23.

JANICE SCHREIBER.

MU BETA
Washington State College
Pullman, Washington

WHERE did we leave off last time? Oh yes, I was going to tell you about the musicale and tea we had, honoring our patrons and patronesses. It was held February 14 at the Alpha Gamma Delta house, and about 35 of our guests were in attendance. The refreshments and decorations were in keeping with the Valentine spirit. The following girls contributed to the program: Helen Hamilton, Iris Widdop, Clede Huber, Josephine Simas, Ruth Le Vesconte, Laila Svendby, Catherine Clancy and Emma Just. To Elsa Kressman with her helpful and original suggestions, her untiring efforts and gracious personality do we owe much of the success of our tea.

Elsa Kressman brought further honor to herself and Mu Beta at a concert held in Yakima by the Yakima Men's Choral Organization. By the many generous gifts of flowers and letters of appreciation Elsa Kressman has received, we are certain that the residents of Yakima were delighted with her performance.

One of our pleasantest events of last month was a joint party with Phi Mu Alpha, Men's Music Honorary Fraternity. After a pleasant evening of games and dancing refreshments were served. Everyone voted to have another very soon.

Mu Beta was asked to supply entertainment for a tea given by the Business and Professional Women of Pullman. Iris Widdop played several violin solos, accompanied by Emma Just and Helen Ross and Bernice Beaumont sang vocal duets, assisted by Catherine Clancy.

BERNICE BEAUMONT.

MU GAMMA
University of Nebraska
Lincoln, Nebraska

MANY interesting things have happened since our last chat together.

First of all, Mu Gamma was inspected by Clarice Painter, whom we enjoyed very much. A musicale tea was given in her honor at the home of Mrs. D. L. Redfern.

Our monthly musicale was presented at the home of Ruth Hird.

The new officers for next year are: President, Josephine McDermott; vice-president and warden, Lois Lefferdink; recording secretary, Marjorie Miller; corresponding secretary, Fern McDougal; historian, Betsy Benedict; chorister, Helen Gribble; alumnae secretary, Mary Jane Swett; treasurer, Arlene Larson.

Our thirteenth birthday banquet was held March 19 at the Cornhusker Hotel. Forty guests attended, including members of the active and alumnae groups, patronesses and guests. The decorations were carried out in pastel colors, and tapers and bowls of sweet peas of the same shades graced the table. Josephine McDermott, president-elect, presided as toastmistress. The theme of the toasts was, Mu Phi's Flower. Arlene Larson spoke on The Root; Hazel Gertrude Kinscella, The Stem; Ruth Hird, The Leaves, and Ardeth Pierce, The Blossom.

Just think of the events between now and next fall! Well, we'll see you at convention.

BETSY BENEDICT.

MU DELTA
Horner Conservatory of Music
Kansas City, Missouri

WITH the musical season drawing to a close, many delightful programs are being given.

on which the names of the Mu Delta girls appear frequently.

Two of our series of Morning Musicales have taken place since our last writing to THE TRIANGLE. Each one has been varied and outstanding, due to our splendid program chairman, Florence Stahl, and the fine coöperation of each sister in the Sorority. On February 12 the following artists appeared: Mary Watrous, pianist and composer; Mamie Austin, contralto, who is always popular with her audience; and Rose Ann Carr, soprano; and two guest artists: Lois Craft, harpist, and D. C. Hyder, Jr., a 17-year-old youth from Amarillo, Texas, whose violin studies have been made possible the last two years by Mu Phi Scholarships.

On March 11 the N. De Rubertes Orchestral Training School Orchestra furnished the program, assisted by Pearl Roemer Kelly, one of our most gifted pianists. The last musicale of our series will be given April 8, and is to be an Ensemble Program with the atmosphere of spring.

We celebrated George Washington's birthday in a truly delightful manner at the Kansas City Art Institute. It so happened that our province president, Clarice M. Painter, Mu Mu, was here for the purpose of chapter inspection that day. There was a business meeting, a short musical program at which Clarice made a brief but interesting talk on Mu Phi Epsilon. A simple luncheon was served in one of the art galleries. Immediately following, an initiation was held on the stage of Epperson Music Hall, which made a charming background for our ceremonies with the soft draperies and the faint light that came through the stained glass windows.

It will be of great interest to you all, I know, to hear that Dr. and Mrs. James R. Elliott (Pearl is our talented organist) have a new son, James R. Elliott, Jr., born on February 18.

In the near future, Mu Delta girls are sponsoring another benefit at the Shubert Theatre. With our treasury filled to overflowing, the success of the convention will be assured.

Will you be there? We hope so.

CHARLOTTE GARVER.

MU EPSILON

HELLO, everybody!

Especially to Mrs. Cammon, past president of our Patronesses Club, who is now in California and whom we miss very much; and Onalee Mair, who is studying in New York. We hear such fine reports of her marks and of the enthusiastic comment Mr. Damrosch gave when he heard her play.

Our February program was held at the MacPhail auditorium. Francis Kelly, pianist; Helen Bach, soprano; Eleanor Frank, violinist; and Edna Erickson, accompanist, gave us a very delightful program.

We had a very delightful honor students' tea at the home of Mr. and Mrs. MacPhail. On the program were Edna Belgum, Eleanor Frank and Edna Michelson, who won our scholarship this year.

Our March program was at the home of Marion Nordin. Helen Grotte, pianist; Marion Shook, violinist; Ruby Ledward, vocalist, and Hazel Michelson, accompanist, made up the enjoyable program.

A red letter day in our calendar of events was the tea which was held March 20 at the charming home of Genevieve Main for Sophie Breslau.

We were, of course, thrilled and proud over the opportunity to meet such a charming and famous artist, and to be able to say that she is a Mu Phi, and not only a Mu Phi but now a member of Mu Epsilon Chapter, a special initiation taking place Sunday. Sophie Breslau was very gracious in saying that wherever she went she was sure of a warm welcome from her Mu Phi sisters.

MARJORIE TAYLOR.

MU ZETA

Whitman College
Walla Walla, Washington

MU ZETA is happy to announce that within the next month we will initiate nine new members. At our last musical meeting these girls tried out before the chapter. The performance of each girl was marked by fine artistry and technic. Strangely enough, there is a preponderance of pianists. This group is marked by its versatility for everyone carries a full college course and is active in a number

of campus activities other than music. Their names and some of their "doings" follow:

Mary Bower, soprano, is a member of Delta Delta Delta and has had a busy year as a member of the Women's Varsity Debate Team. Just recently she was elected to Delta Sigma Rho, Forensic Honorary. Last fall she was a member of the Glee Club and the Women's Trio. Louise Stapp, pianist, is a member of Delta Delta Delta. Emily Coulter, pianist, is a member of Delta Gamma, and was accompanist for the Glee Club. Doris Taylor, pianist, is a member of Alpha Chi Omega. She gave her junior recital, recently, assisted by Mary Bower. Helen Wermager and Lucile Dammon, both pianists, are members of Alpha Chi Omega. Lucile Viste, pianist, and Alpha Chi Omega, was a member of the Glee Club. Vera Bennington, pianist, will be graduated from the conservatory this year.

The last of February two of our faculty members, Esther Sundquist Bowers and Alice Peterson, provided a delightful treat for us all in the form of a Sunday afternoon concert. Esther played a Haydn, a Beethoven, and a Grieg sonata for violin and piano. Before each sonata a short description of the music was given.

Anna Barber, lyric soprano, and Joyce Nye, coloratura soprano, are each presenting their graduation recitals soon. Joyce's recital is especially interesting as she is doing two operatic scenes in costume.

Virgil Hopkins was recently elected to B. K.
JOYCE WINIFRED NYE.

MU ETA
College of the Pacific
Stockton, California

FOUR worthy and talented girls have been elected to Mu Eta this semester. They are Marian Adams Woolley, soprano; Harriette Sulser, piano; Martha Hansen, piano; and Irma Belle Studley, violin.

We are anticipating many happy associations with our new members. They are to be initiated March 30. The ceremonies will be followed by a dinner and program, to which our alumnae and patronesses are invited. Virginia Short is going to tell us about her trip through Europe last summer.

An outstanding event this past month was the joint dinner and program meeting held with our brothers, the members of the local chapter of Phi Mu Alpha. We enjoyed a delicious meal in the college dining room, after which we were entertained by current events and musical numbers from both organizations. The climax of the evening was selections by a mixed vocal quartet, composed of two members from each group. They were Ileta Shimmin, Betty Hyde, Frank Freeman, Virl Swan. Barbara Bordon accompanied them.

On March 6 five Mu Eta girls—Miriam Burton, piano; Ileta Shimmin, soprano; Alice Langille, violin; Violet Rebaleati, piano, and Louise Bailey, soprano—gave a program for a group of the inmates of the State Hospital for the Insane at Stockton. Numbers of fine quality and interest were presented, and they were well received. The ladies seemed to enjoy all of it immensely.

We were fortunate to have as our inspector Helena Redewill, our beloved editor. We fell in love with her, and we wished that we might learn to know her better. Her stay here was a real pleasure to all of us, and we hope to see her again.

LOUISE BAILEY.

MU THETA GAMMA
University Conservatory of Music
Austin, Texas

OUR chapter was happy to receive a visit during the first week in March from Louisa Wicker Allensworth, Gulf Province president, who is soprano soloist for the Jackson Hill Baptist Church in Atlanta and an active member of the Mu Omega Chapter. Louisa was on an inspection tour of the active chapters of the gulf states. Soon after her arrival we had an initiation service, followed by a dinner at The Gables. Spring blossoms were used on the dinner table, and the following members of Mu Phi Epsilon attended: Minerva Blackman, Marion Reed, Willie Horne, Johnita Albers, Stella Stacy, Ann Crockett, Gladys Couth Hodges, Darthula Stohl, Kitty Neighbors, Myra Smith, Lucile Morley, Mary Belle Granger, Helen Stanley,

and the honor guest, Louisa Wicker Allensworth.

Following the dinner, a program was given in honor of the visiting officer. A feature of the program was the presentation of Gladys Couth Hodges, violinist, who has recently been elected to represent our chapter at the national convention in Kansas City in June. Other musical numbers were given by Lucile Morley and Stella Stacy. Stella also played two of her own compositions. The entire program was very much enjoyed. Gladys will act as both musical and business delegate at the coming convention, and she and Stella will submit compositions in the national composition contest.

It is needless to say that we enjoyed Louisa Allensworth. Her charm of manner and striking personality endeared her to all of our members, and we hope she will return soon.

Our regular musical programs this year have been held at the conservatory on Sundays at four o'clock, to which the public has been invited. They have been unusually well attended. We are planning other musical attractions before the school year is over.

WILLIE S. HORNE.

MU IOTA

Columbia School of Music
Chicago, Illinois

MARY CURRY LUTZ gave a charming recital the first week of March. She is taking her degree in piano this season. Also in the first week of March Jewel Prosser, contralto, gave an enjoyable concert in the Young American Artists Series.

It should not be overlooked that one of our successful teachers presented an extremely interesting pupil in recital in February. The teacher is Helen Frish Cunat and the pupil Clara Matter.

Mu Iota gave a very nice bridge party in February at the Medinah Athletic Club. I believe I mentioned last month that the w. k. depression only affects the necessities of life? Our party was crowded! Music was provided by de Mars and Davison, a Pair o' Pianists, and Anne Post, contralto. May I boast just a wee bit about this piano team? I am half of

it, you know! We have played this season at the South Shore Music Club at Jeannette Durno's Salon, and made a very successful appearance at the Chicago Artists Association. Last week we played for an exclusive style show at Marshall Field's and by the time you read this we shall have played over NBC from the Cleveland studios.

Mr. Dudley Buck of Columbia held One Hour of Music at the Cordon and presented four of his artists including our own Marie Morrissey, whom you all know.

We have taken in two new members since the last issue. Parthenia Vogelback entertained the chapter at initiation and the new Mu Iota's are Edna Nelson Hanson and Virginia Holland. We were honored to have as our guests Marjorie Kenney and Linda Soul of Iota Alpha. I cannot close this letter until I have told you that Anne Post sang the leading role in one of Sacerdote's opera presentations and did herself proud.

ANITA DE MARS.

MU KAPPA

Oklahoma University
Norman, Oklahoma

THIS season has been a very busy and profitable one for Mu Kappa Chapter at Norman.

Early in the winter our reception and "get acquainted party" at the Kappa Alpha Theta House was very lovely. Faye Livingstone, who has returned to us this season after several years spent in study in Munich, Germany, and New York City, sang most delightfully, and the University String Quintette played for us. The quintette is composed of Paul Carpenter, first violin; Mary Ann Staig, second violin; Dorothy Forsyte, viola; Dorothy Tullus, 'cello, and Eugene Hassel, piano. Dorothy Tullus and Mary Ann Staig belong to us.

Later, Mu Phi Epsilon presented Virginia Billups Greene and Helen Lord of Oklahoma City, in a two-piano recital. These girls delighted the large audience with their very artistic playing. Following the recital, we entertained them with a tea at the Faculty Club. Virginia is a graduate of Oklahoma University.

Our own annual recital was interesting for

Mu Phi claims some splendid musicians, and their program left nothing to be desired. Genevieve Taft, Mildred Davis, Lucille Paynter and the string quintette appeared at this time.

The program meetings in charge of Dorothy Tullus have really been an inspiration this year. She has followed the development of instrumental chamber music from the earliest date up to the modern period. Her programs have been well thought out and the periods profusely illustrated.

WILDAH BROOKE MORRIS.

MU MU

Kansas State College
Manhattan, Kansas

MU MU Chapter, in spite of the fact that we started the year with just one student member, has made a fairly creditable showing this year. We felt greatly encouraged to be able to initiate early in the fall three fine girls—Frances Jack and Alice Clema, majors in music education, with minors in piano and organ; and Alice Bozarth, major in applied music.

Six faculty members have remained active, and with the married sisters who live here, we have managed to fill the offices, and otherwise "carry-on."

Doris Chapman-Sherer is teaching part time in the children's piano department at the college. Lillian Boyer-Daugherty has taught music two days a week in a neighboring town, keeping her membership both in our chapter and in the Manhattan Music Club.

Alice Sayre has been most helpful in our study and social programs, twice opening her home for our reception and tea for new music students, and a regular social meeting of the chapter. She has also just presented us with a junior member—a fine ten-pound boy! Helen Jerard is another active who does her share by serving most efficiently as chapter treasurer, although more than busy as supervisor of music in the city schools.

Our program committee chairman has planned a fine series of interesting study programs, which have been given at various homes or apartments of members. These have been followed with a bit of sociability, one of them a lovely dinner given us by our

patronesses, Mrs. Floyd and Mrs. Davis.

A program by the student members of the chapter was given recently. Jean Sellards, one of Xi's members, who is attending K. S. C. this semester, performed most creditably on this program.

RUTH HARTMAN.

MU NU

University of Southern California
Los Angeles, California

MU NU had the pleasure and honor of entertaining Helena Redewill during her short visit to Los Angeles recently. A tea complimenting Sister Helena was given at the Knickerbocker Hotel in Hollywood. We are sorry that her stay was of necessity such a brief one, but we realize that such a busy person cannot expect to remain in one spot for very long.

The annual benefit concert given by Mu Nu for the purpose of raising money for our scholarship fund was given this year at the Philharmonic Auditorium. We presented Selma Siegleman, concert pianist, and one of our active members, as soloist with the Los Angeles Philharmonic Orchestra. She chose the Schumann A Minor Concerto and played it with exquisite artistry and interpretation. This is the second time Selma has appeared with this orchestra, besides having appeared with the concert orchestra of U. C. L. A.

Prospective members were entertained at a lovely tea at Gertrude Granor's home the 21st of February. Gertrude, doing double duty as hostess and soloist, contributed to the program with a group of songs. Betty Moore and Veva Reeder played violin and piano selections. Decorations were chosen to accent the red, white and blue motif, since George Washington's birthday was but a day off. Three girls, Pauline Gastrich, Margaret Walters, and Mary Sousa, were selected for membership in Mu Phi Epsilon, and they will be initiated April 8 at Menlo Manor.

Election of officers for the coming year resulted in the reelection of our president, Helen Macey. Peggy Maule will assist her in the office of vice-president.

Our last social meeting was held at the home of Helen Dill, in her Spanish bungalow atop a high hill in Westwood. A very inter-

esting playlet was given by three of the girls, the moral of which was "Don't neglect your husband. Someone else may start paying attention to him." The married members of our group were greatly impressed.

GLENNA GOULD.

MU XI

American Conservatory of Music
Chicago, Illinois

HILDA BROWN MEYNE, ardent enthusiast for affairs cultural, chairman of Cook County League Women Voters, staged (I am not groping for words) a colorful Russian tea with true and lovely conformity, including samovars, caviar and costumes. Maurice Hindus, noted lecturer on Russia, was a guest.

Alvena Reckzeh, Kathryn Anderson, annual duo-piano recital, Kimball Hall. What critic would presume to other than pay tribute to these technicians?

Mu Xi represented at Chicago Artists' Association by Ethel Heide Wishover, contralto; Elsa Holinger Teschan, soprano; Nesta Smith, violinist; Alvena Reckzeh, Elsa Chandler, accompanists.

Phyllis Eileen Barry, 'cellist, soloist at Crystal Ballroom, Blackstone Hotel, introduced innovation giving recital in pajamas, first time on concert stage.

Cara Verson, leading exponent of modern pianism, leaves in April for tour of the East, with recital in New York City.

Helen Leefelt directed Elmhurst Women's Chorus at Sunday Evening Club, Orchestra Hall.

Emma Freeicks, soprano, soloist Jefferson Park Altrui Club, broadcast from WCFL. With Nesta Smith, violinist, Alvena Reckzeh, accompanist, program for Irving Park Relief Association.

Final Formal Diana Court was most noteworthy. To attempt to adequately commend Mac Doelling Schmidt, pianist, Merrie-Mitchell Maier, soprano; Lucille Turner, violinist; Margaret Lagerquist, pianist, and Elsa Chandler, accompanist, with 300 words would be facetious. Robert Ambrosius, Chicago Symphony 'cellist, accompanied by Mae Doelling Schmidt, gave Rubinstein's Sonata in D Major masterfully.

PHYLLIS EILEENÉ BARRY.

MU OMICRON
College of Music
Cincinnati, Ohio

MU OMICRON Chapter held its initiation on February 4 at the Netherland Plaza. Two girls were taken into the chapter—Nellie Belle York, a contralto from the class of Italo Picchi, and Genevieve Verborg, pianist, from the class of Hans Rischard. After the initiation at five, a dinner was served, followed by a dance. Estelle Hinz acted as toastmistress and a very capable one. She was introduced by our president, Amelia Hamberg. Responses were given by Margaret Conway, Helen Witt, and two guests of honor, Alma Geiser, our national secretary, who presented the certificates to the newly elected members, and Hazel Piercy, president of the Cincinnati Alumnae Club. Nellie Belle favored us with an original song written to Mu Phi, to which the musical accompaniment was written and performed by Genevieve. Three of our patronesses were with us, namely, Mrs. Romeo Gorno, Mrs. William Blasi and Mrs. B. E. K. Evans, who offered an impromptu speech to our girls, expressing her gratitude at being with us, which was none the less mutual.

The February musical was held at the home of our patroness, Mrs. Blasi, Helen Witt being chairman of the program, which consisted of an afternoon with MacDowell. Piano selections were rendered by Virginia Duffey, vocal solos by Mary Elizabeth Wallace, and the sketch of MacDowell's life by Kate Cornish. This was followed by moving pictures taken in the various countries by Miss Isle Huebner of Vienna, who is on the piano faculty at the College of Music and who takes a group of girls abroad each year, including some of our own Mu Phis. She lectured as the pictures were being shown, making a very pleasant afternoon.

The March musical was held at the home of Helen Witt, with Edythe as chairman of the program.

Piano selections were given by Doris Wulf, reading by Kate Cornish, and violin solos by Edythe Tolken, who substituted, one member being ill.

KATE CORNISH.

MU PI
Ohio Wesleyan School of Music
Delaware, Ohio

FOR some reason our chronicles have been missing so this is a summary.

Our monthly program meetings, held jointly with Phi Sigma Mu and attended by the Triangle Club members, have covered a wide range of subjects, with readings from Wallaschek's Primitive Music, Combarieu's Evolution of Music, Dyson's New Music, Mursell's Principles of Musical Education, Dvorak and Deems Taylor. Musical illustrations were helpful at all times.

A high spot in our year was the weekend visit of our inspector, Helen Mueller.

Our three seniors—Marion Johnson, Vadis Gardner and Ruth V. Thomas—have been doing practice teaching preparatory to work in music supervision.

Marion Johnson, president, was recently elected to Phi Beta Kappa. She gave a violin recital in March and is planning a piano recital. She is first violinist in the orchestra and violin soloist for the Singers Club.

Ruth V. Thomas, treasurer, was elected recently to Pi Kappa Lambda.

Vadis Gardner, secretary, is assistant accompanist for the Singers Club.

Isabel Thomas, historian, is on sabbatical leave this semester and is in New York studying and enjoying the musical life.

Ella V. Johnson gave a faculty recital on the rebuilt Pilcher organ in the music hall in November and is to give one on the new Kimball in Gray Chapel.

We are happy to have some alumnae with us as actives. Dorothy Bussard is teaching French in the city high school, Ruth Thomas is an assistant to the Dean of Women, and Charlet Cellars is at home studying and teaching. Charlet is to be our president again next year. With the added inspiration gained from her second convention we know she will prove even more enthusiastic than when president a year ago.

ELLA V. JOHNSON.

MU RHO
Denver College of Music
Denver, Colorado

MR. and Mrs. Phillip Fenton (Alice Montgomery) are the proud parents of a baby girl, Phyllis Anita, born March 23. Mother and daughter are fine, and Alice hopes to be with us again at our April meeting.

Must tell you about our St. Patrick's party. Mary Converse was our delightful hostess, and the party was in honor of our newly elected officers. Bill Mitchell, a real Scotchman, sang some Scotch and Irish songs for us accompanied by Celia Phipps. Cecil Smith, who spent the last summer in Europe, gave a most interesting account of her travels. Quite an unusual thought was expressed by Cecil regarding the European attitude toward our American jazz. She said that the people whom she met always asked her to play some American jazz. Apparently they enjoyed hearing it, but would always denounce it—yet expected her—as an American to uphold it. Then such delicious refreshments for us all with the color and spirit of St. Patrick very much in evidence. It was quite a gala occasion and very much enjoyed by all. Alice Slaughter Hornaday, who has been unable to be with us for some time, was there and we only hope she can come regularly from now on.

Mu Rho had a delightful visit with our western province president, Clarice Painter, the 13th of February. We had a luncheon at the Olin Hotel for her at noon, a model initiation at the school in the afternoon, and a formal musical at the home of Mary Converse in the evening. The affairs of the day were planned on such short notice that many of us were unable to be present, but those who were there expressed themselves as having met a most charming girl.

PEARLE L. POAGUE.

MU TAU
University of South Dakota
Vermillion, South Dakota

ON February 17 our province president, Clarice Painter, made us a flying visit. We were happy to have a prospective Mu Phi, Della Ericson, to initiate at our inspection in-

itation. Della Ericson is a fine pianist and already a loyal Mu Phi. Marjorie Dudley entertained us at a lovely luncheon, after which we gave a musicale for our guest of honor.

On February 26 Mu Tau Chapter gave two open programs; one at convocation for student body and faculty; the other at Faculty Women's Club.

I wish you could have heard Marjory Wilson's lovely program of her own compositions given on March 8. "Midge" holds the honor of being the first person to receive a master of music degree at the University of South Dakota. Her program consisted of solos for violin, 'cello, piano, and voice. The last number consisted of a trio for violin, 'cello and piano in three movements (her master's thesis). Another lovely program, one of chamber music, was given on March 17 by our university string quartette, consisting of Dean Colton, first violin; Ella Colton, our Mu Tau 'cellist; Professor Boardman, viola; and Marian Mitchell, second violin, our Mu Tau patroness.

We wish we could all come to convention. We are sending our newly elected president, Stella Anker, and we want you to meet her.

GENEVIEVE TRURAN.

MU UPSILON CHAPTER Eastman School of Music Rochester, New York

MU UPSILON CHAPTER has had no cessation of activities since its last news letter. On February 23 one of our members, Rita Watts, kindly opened her home for the monthly musicale, which was this time the occasion of initiating our newest member, Bertha Coon. A very interesting paper on Russian music, given by Emiline Bodler, supplemented the musical program presented by Anne Morrow, mezzo-soprano; Bertha Coon, pianist, and Dorothy Pfeffer, soprano.

To augment its scholarship fund the chapter sponsored the George Arliss movie, *The Man Who Played God*, which netted about \$65. And our scholarship fund is to receive still more substantial support. On the evening of April 11, in Kilbourn Hall, one of our patrons, Max Landow, a well-known concert artist, has most kindly consented to give a recital for the benefit of Mu Phi. Mr. Lan-

dow needs no introduction to Rochester audiences so we are expecting a large number of people to avail themselves of the privilege of hearing him.

Plans have been completed for our public spring musical, which is to be held in Kilbourn Hall, Saturday afternoon, April 23. The program includes a double harp number, organ, voice, piano selections and a string ensemble.

Irene Gedney and Dorothy Pfeffer have been elected as our musical and business delegate and alternate to the convention to take the places of Suzanne Withus and Eileen Malone, who find it impossible to attend.

And now last, but not least, we have just had the pleasure of entertaining our province president, Ada Britton. Her visit and helpful suggestions have proven a quickening stimulus to the sorority. On Friday afternoon at MacDowell Hall we held in her honor a tea and musicale in which the participants were Margaret Tolson, Dorothy Pfeffer, Arline Piper, Anne Morrow and Irene Gedney.

HARRIET BALCOM READ.

MU PHI Baldwin-Wallace Conservatory of Music Berea, Ohio

MU PHI Chapter at Baldwin Wallace Conservatory, Berea, Ohio, is making every effort to arouse the enthusiasm and spirit of every girl by planning interesting programs for the next three months.

First we are planning a big reunion for March 7. Our president, Louise Stretch, has invited us to her home for that event. It promises to be a fine entertainment and a lovely social time for all of us who truly enjoy getting together.

We will sponsor a bridge party later in the month. The proceeds will go towards furnishing our new room.

In April we wish to celebrate the first use of this new room in some special way and so we have decided to entertain our patronesses at a tea, and the alumnae with a varied program in the evening of that same day. We sincerely hope that everyone who has ever been interested in Mu Phi Chapter will make every effort to visit us on that occasion.

Our spring musicale takes place in May. We are counting on some of our alumnae to help us make this a success by having them appear on our program.

Because of some oversight, it was not mentioned in the February issue of THE TRIANGLE under Interesting Mu Phis that Ruth Huber is a member of Mu Phi Chapter of Baldwin Wallace Conservatory, Berea, Ohio, and that Carleton H. Bullis is head of the theory department of that conservatory. I have been asked to correct these two omissions.

RUTH E. HUBER.

MU CHI Southern Methodist University Dallas, Texas

THE spring rush of senior recitals is upon us. This year Mu Chi Chapter has ten seniors of whom we are justly proud. They are: Francelle Bellinger, public school music; Florence Bedford, piano; Francis Deaderick, piano; Edwina Gilbert, piano; Betty Knox, piano; Joel Estes Lichte, piano; Lillian Morrison, public school music; Helen Ray, violin; Elizabeth Rea, organ; Elizabeth Russell, piano. At the last business meeting Agnes Maxwell, president and president-elect for next year, was chosen as our business delegate to the convention in Kansas City. Betty Knox will be our musical delegate. Several other members are planning to be there, too.

In February we were honored by a visit from Louisa Wicker Allensworth, Atlanta, Georgia. During her stay a musical tea was given at Highland Park Town Hall. The program was given by Eudoxia Bradfield, Gladys Fried, Viola van Katwijk and Betty Knox. The tea service was presided over by Elizabeth Todd and Valerie Foscue. The Alumnae Club honored Sister Louise with a chicken dinner at the home of Zella Stanyer. The guest list included members of the active chapter.

Elsie Golden was hostess to Mu Chi Chapter for the program meeting on March 22. Ruth Townsend was the assisting hostess. Several of the alumnae members were present, making quite a party.

Gladys Fried, Dora Poteet and Viola van Katwijk were presented in recital at McFarlin Auditorium March 24 as a feature of the an-

nual Founders' Day program of Southern Methodist University.

Our last public program of the season will be an organ concert in McFarlin Auditorium on May 7.

VALERIE GOULD FOSCUE.

MU OMEGA Atlanta Conservatory of Music Atlanta, Georgia

THESE are very busy days with the members of Mu Omega Chapter. One of the most delightful programs the chapter has ever presented, took place on January 16 when an ensemble program was beautifully rendered by Agnes Conley, leader. Caroline Hall: paper, Chamber Music; Louisa Allensworth, voice; Frances Collins, violin; Margie Griffith and Burnham Marsh, harps; Miriam Johnston, Rubye Lewis, Grace Dodd and Claudia Hayes at the piano.

Our annual inspection took place February 20, with Sister Louisa Allensworth, gulf province president, and our own member, was inspecting officer. A musicale was given in her honor at this time and a large group of friends were invited to enjoy this and the tea following. We are happy to have the inspiring association of Sister Louisa. She has also visited Texas, Oklahoma and Florida on inspections, as well as Mu Chapter at Gainesville, Georgia.

An all-piano program will be presented on March 20, and on April 6 Margie Griffith will give her hospitable home to the chapter for an evening musical at which time Agnes Conley will preside. A violin group will be given by Agnes Adams; voice numbers by Louisa Allensworth and Virginia Moore, and harp numbers by Margie Griffith and Burnham Marsh, with delightful piano presentations by Rubye Lewis, Ina Jolly, Margaret Eason and Miriam Johnston. The public will be invited to attend this musical.

Mu Omega has recently sponsored an afternoon musical at the Candler Hotel in Decatur, which was enthusiastically received, and invited back.

Convention plans are being definitely worked out. Both the musical and business delegates, as well as alternate, have been selected.

With the election of officers for the year 1932-1933, we are happy to retain Rubye Head Lewis as our president. She is a gracious leader and a most helpful sister.

VIRGINIA MOORE.

TAU ALPHA New York City

MARY BROWNING and Genevieve Lewis played recently at Carnegie Hall in the National Woman's Symphony Orchestra under Ethel Leginska, Mu Phi.

Beatrice MacCue sang March 15 for The Daughters for the Defense of the Republic at Hotel Astor.

Janet Ross, chairman of music during Lent at the Fifth Avenue Presbyterian Church, New York, accompanied Mrs. Johnston Nali, wife of the Belgian Consul, and also Mary Browning, Tau Alpha.

Bertha Freyd accompanied recently for Mrs. Lampert in folk-songs and Effim Rosanoff, 'cellist; Grace McDermott, violinist, in Mt. Vernon; and Mrs. Zaitlin, in New Rochelle.

Ada Britton, province president, paid us an inspection visit on March 24. Janet Ross was hostess and Marie de Kyzer and Bertha Freyd participated in the musical program; also Byrd Elliot.

We initiated that evening Mary Bryan Swain, soprano, and Hazel Griggs, pianist. Mary Swain received the major part of her musical education in Chicago under Thomas MacBurney, Herman Devries, and Isaac Van Grove. She toured the west and south both in Chautauqua and concert work. In Chicago, she sang in many leading churches; at the Art Institute, and on the Sunday afternoon programs of the leading hotels. She plans to give two programs in April at the Bronxville Woman's Club.

Hazel Griggs made her first public appearance at the age of seven. After a course with local teachers she entered Kidd-Key Conservatory, Texas, graduating with honors. She has been a scholarship student of Margaret Liszniewska, Cincinnati Conservatory, and of Alfred Cortot in the Ecole Normale de Paris. Other teachers have been Josef Lhevinne, Bertha Bert and Josef Adler. In January, Hazel

played at the Barbizon and in April will give another program there. She will play in Kutztown, Pennsylvania, in May.

MILDRED L. MILES.

PHI BETA University of Minnesota Minneapolis, Minnesota.

ON April 26, we will present our girls in an open program. Mary Francis Lehnerts is in charge, so we're sure of its being a success.

There's hardly a year that goes by that we don't have one of our Phi Beta girls win out in local competition. This year it was Hildred Brohaugh, violinist, who tied for first place in the Thursday musical contest held in Minneapolis in January.

Our new sisters have been kept busy playing for various clubs. In February, Hildred Brohaugh played for the Dining Club, an organization whose membership includes the deans from different colleges at the University. Then both Hildred and Adelaide Lacy played for the College Women's Club. Such contacts are making Mu Phis known on the campus.

This spring several of our girls are being presented in recital. May 5, Hildred Brohaugh is giving a violin recital. May 10, Mary Frances Lehnerts is being heard in a song recital. And May 17, Nina St. John, our only senior, is presenting a piano recital.

We are busy as usual giving candy sales, but on April 20 and 21 we are sponsoring a benefit bridge at Raeferters. And on the evening of May 19 we will take over the campus theatre. You see, we're determined to raise enough money to send our two delegates to convention, besides awarding our fifth annual \$50 scholarship. Miriam Lieberman-Edelmann has charge of the bridge, and Mary Frances Lehnerts, the theatre.

In the near future the university chapters of Sigma Alpha Iota, Phi Mu Alpha, and Mu Phi Epsilon will present the Bach B minor mass, under the capable direction of Prof. Donald N. Ferguson and Prof. Abe Pepinsky.

ETHEL MAE BISHOP.

PHI GAMMA Peabody Conservatory of Music Baltimore, Maryland

WE WERE all thrilled last Sunday evening, March 20, when one of our new patrons, Howard Rutledge Thatcher, teacher of harmony and counterpoint at Peabody, received an enthusiastic ovation when his Concerto in A, for violin, still in manuscript, was played at the last concert of the season of the Baltimore Symphony Orchestra at the Lyric Theatre. Barbara Lull, violinist, of California, was the soloist, with Mr. Thatcher in the conductor's stand.

Our new patrons, to be initiated in April, are: Mr. and Mrs. Thatcher, Charles H. Bochau, vocal instructor at Peabody, and Mrs. Bochau, and Miss Bertha Bassett, assistant superintendent of the preparatory department.

Marie Hogan, post-graduate student in piano, under Austin Conradi, gave a recital in North Hall at Peabody, February 11. Marie also gave several recitals at her home in St. Petersburg, Florida, while there on a visit recently.

Our talented Bee Osgood gave a recital for the Baltimore Music Club recently. Elizabeth Bolek, Elma Reitz and Betty Gumpper Hocker have also been soloists on recent programs of the club.

On Friday, March 11, Phi Gamma, gave a musicale at the Mt. Vernon Place M. E. Church, by which we benefited financially. Those participating were Marie Hogan, Betty Gumpper Hocker, Charlotte Houston, Ruth Hall and Elma Reitz. Once again Sylvia Meyer, harpist, graciously lent her assistance. Which reminds us that we have been invited to meet with the Washington Club, with which Sylvia is affiliated, at her home there on April 11.

So much for news. As for gossip: Mary Lewis Blalock went home to Florida in February. We expect to publish soon a notice concerning her in the habituary column, but as yet we haven't his name.

All aboard—next stop Kansas City for the luckier ones. Au 'voir, Mu Phis.

V. RUTH HALL.

PHI DELTA University of Missouri Columbia, Missouri

A BENEFIT bridge was given by Phi Delta Chapter on February 20 at Harris'. Refreshments and prizes were furnished by the Columbia merchants. Approximately \$40 was cleared.

On March 9 a social meeting was held at the home of Mrs. Marshall Bryant, one of Phi Delta's patronesses. Guests at the meeting were Misses Hildur Leland and Kathleen Fowler and Mrs. Daisy Woods Hildreth. The musical program was given by Virginia Babb, Elizabeth Chevalier, Myra Laxton Gregg and Margaret Tello. Virginia played Feux Follets by Philipp. Elizabeth Chevalier, violoncellist, played Lamento by Fauré and Serenata Napoletana by Sagambati. Myra sang Comme Raggio di sol by Caldara. Both Elizabeth and Myra were accompanied by Margaret Tello. Following the musical program, Mrs. George Venable gave a very interesting talk on the National Federation of Music Clubs and activities of the Federation in Missouri.

On March 17 the University Women's Glee Club, under the direction of Geneva Youngs, gave a concert in the university auditorium. The concert was considered excellent by many who heard it. Mary Maxine Korfhage was one of the soloists. Frances Mann was the accompanist.

The delegates elected to represent Phi Delta Chapter at the national convention are Hazel Nickell, business delegate, and Mary Maxine Korfhage, musical delegate.

Myra Laxton Gregg and her husband recently left Columbia to make their home in Greenville, Missouri. Myra will be missed by Phi Delta members in Columbia.

L. ALICE WILHITE.

PHI EPSILON College of Emporia School of Music Emporia, Kansas

PHI EPSILON was most happy to have a visit, February 24, from their province president, Clarice Painter of Mu Mu. They wish her stay could have been longer.

Spring activities for the chapter opened March 13, when Cora Edwards was presented

in a voice recital. March 20 a vesper program was given by the School of Music. Six Mu Phis, Esther Smith, Evelyn Mitchell, Julia Valensuela, Helen King, Doris Gunn and Bernice Milner participated in a four-piano, sixteen-hand number, fugue in A minor, by Bach-Grainger and Mabel Leffler played the piano in the lovely Fantasie by Demarest for organ and piano.

The eighteenth annual spring music festival for the College of Emporia opens April 3, when the Vesper A Capella Choir, of which all Mu Phis but one are members, will present The Messiah, by Handel. Gladys Havens, contralto, from Kansas City, Missouri, will be the guest soloist in both The Messiah and the concert to be given the following night by the Vesper A Capella Choir. April 5 the London String Quartette will give a concert and April 6, Percy Grainger, the A Capella Choir and the College of Emporia Symphony Orchestra will present an all-Grainger program. Mr. Grainger will be assisted by the following Mu Phis: Pianists, Mabel Leffler, Esther Smith, Evelyn Mitchell, Helen King, Julia Valensuela, Doris Gunn and Bernice Milner; vocal soloists, Cora Edwards, Dorothy Gartner and Lois Boulton.

BERNICE MILNER.

PHI ZETA
Morningside College
Sioux City, Iowa

AS I write this epistle of my Phi Zeta sisters we are enjoying a most welcome spring recess.

Classes, lessons and everything were dropped for a day after the arrival of Clarice Painter for chapter inspection. Although her visit with us was brief we enjoyed it all. With business over in the morning we had a luncheon and musicale at the dormitory. Girls appearing on the musicale were Irene Bentley, Louise Smith, Muriel Irwin, and Dorothy Smith.

Two of our number have recently given recitals. Muriel Irwin, contralto, gave her senior recital, and Margaret Propp gave her junior recital.

Second semester pledging has given us one new sister, Louise McCracken; mezzo-soprano. Louise has been singing in a mixed quartette,

which has been doing quite a lot of broadcasting this year.

Five of us girls are working hard getting ready for our annual spring choir tour which will start soon after vacation.

Our big topic of conversation at meetings now is the convention. We do wish that we could all go because it seems so close this year. But if we do not go we know we shall be well represented by our delegate, Eunice Wahlstrom. Eunice is to be our new president this coming year.

Several of the girls have been appearing on public programs recently. Margaret Propp accompanied solo numbers at our last band concert; Joyce Woodford and Louise Smith, members of a string quartette, have been appearing as entertainers on various programs in the city; Eunice Wahlstrom accompanied for the Easter cantata of the First Lutheran Church Choir; and Elizabeth MacCollin has been acting as judge at music contests.

Since this is the last TRIANGLE this year we want to take this opportunity to wish all of you a very happy summer vacation.

DOROTHY SMITH.

PHI ETA
Michigan State College
East Lansing, Michigan

THE musical activities of the chapter have continued during the last two months, and the monthly programme meetings have been held as usual. At the evening musicale given for Helen Mueller, Frances Ayres, Doris Posthumous, Florence Herbert, and Beatrice Brody rendered selections in their various mediums. It may be noted in passing that Frances played violin compositions composed by Mr. Arthur Farwell of the faculty here, and given in public for the first time. It is whispered that in one composition of fairy-like texture, Mr. Farwell wrote for and about our Frances, and if so, he has succeeded admirably in portraying her whimsicality.

The February and March meetings were held at the homes of Doris Posthumus and Mrs. LeMoyné Snyder, respectively. Those providing the programme at the latter were Pauline Sandham, and Mary Ellen Davis, while the former took the form of a George

Washington birthday party, with the group as a whole providing patriotic music.

Betty Waters was initiated on March 6, and the chapter was very happy to welcome her as a sister. It is a great joy to see the homogeneity of the chapter with respect to the ideals, attainments and personalities of its members.

It is just too bad that the chapters do not possess wishing carpets, on which we might journey one and all to Kansas City in June, but since railway and airplane companies still require tickets purchased with the national currency, we shall be compelled to go psychic and be with the delegates "in spirit" only—but that we shall do, to say nothing of enjoying it vicariously through the report of our own delegate, and the more comprehensive TRIANGLE.

MARGUERITE TAYLOR PATTON.

ANN ARBOR CLUB

OUR one hundred dollar scholarship fund was divided between two students in the amount of \$50 each. This money was received from the proceeds of a quilt sale held last year. We also have a loan fund accommodating three students for this year.

Most of our members are active musically and several have been before the public recently. Louise Nelson has accompanied one of Professor Hackett's special students in a recital. She has also been the pianist on a program given at a Mu Phi formal, at the Michigan League in the ballroom. Laura Littlefield, accompanied by Ava Comin Case, was on the same program. Grace Johnson Konold has been general chairman of arrangements for a Washington bicentennial tea given by the D. A. R's. in the Michigan League. She also sings for the Woman's Club in April. Laura Whelan will accompany her. Thelma Lewis will sing several of Goethe's lyrics for the centenary program in commemoration of Goethe's death, by the University of Michigan, in Hill Auditorium, on March 22. Juva Higbee led the Ann Arbor High School Chorus of 80 voices in several numbers before the Woman's Club recently and has directed a high school opera. She will direct the children's chorus on Friday afternoon of the May

festival. Edith Koon and Roxy Cowin assisted at a Parent Teacher program in the Mack's School, recently. Edith arranged a piano class demonstration and Roxie was director of the Boys and Girls Glee Club. Dorothy Paton, our national treasurer, is studying voice with Arthur Hackett this semester. She will sing for a missionary convention held here in April and she has assisted Juva in the opera and was director of the pageant for the Washington Bicentennial given by the high school students. Dr. Adams of the Clements Library in the University assisted in furnishing material for the pageant. Dorothy played the minuet for them and went with them to Lansing, Michigan, when the pageant was presented there. Dorothy is now working on a minstrel show for the high school. Reba Brown, our president in the club, opened her home recently for the bookshelf and stage section of the Faculty Women's Club. Reba has a son who attends St. John's Military Academy at Delafield, Wisconsin.

LAURA MAE WHELAN.

BOSTON CLUB

JUST when we had two fine programs I especially want to display, programs are being banned by headquarters. What a blow! At our February meeting to our great delight we had as a guest Mrs. H. H. A. Beach, Mu Phi Epsilon's most distinguished member. Mrs. Charles Overlander, one of our patronesses, opened her home to us for the evening, and a few guests were invited. Songs, part songs and piano pieces by Mrs. Beach were presented, the composer herself generously playing several numbers. Of our own members, Maurine Palmer, Virginia Stickney Snow, Louise Daley, Abbie Conley Rice, Antoinette Perner Morash, Alice Allen Drayton and Margaret Chaloff participated in the program.

In February also we gave our annual bridge-musical—a gratifying success from social and musical standpoints, though not as beneficial to our philanthropic fund as we had hoped. (Old Man Depression again.) The program by Artiss DeVolt, harpist; Elizabeth Travis Behnke, pianist, and the Mu Phi Epsilon Trio with Margaret Chaloff accompanying, really deserves a complete report.

On March 2 we were entertained at the home of Katharine Ford. The scheduled program, German music, was given by Louise Beach Whenman and Elizabeth Travis Behnke. Election of officers promoted Alice Allen Drayton to the presidency, Mable Musgrave succeeding to the vice-presidency. The rest of the officers continue as before. And right here I want to pay tribute to Abbie Conley Rice, our outgoing president. She has our gratitude and admiration for the splendid way she has filled the office.

With great pride we announce that Tsuya Matsuki is in London for six months, having been awarded the first American scholarship under Stanley Chappell at the London Academy of Music.

Continued in our next.

UNA L. ALLEN.

CINCINNATI CLUB

ACT III

SCENE I—Took place in the home of Mary Halliday, with the Alumnae club officers assisting in the rites of hospitality. The guest speaker of the day was Mr. Arthur S. Postle, instructor in speech, at the University of Cincinnati. His subject was Musician's Speeches. A two-piano program was presented by Gusje Hunche and Hilda Myers (Mu Omricon), and Bertha Krehbiel and Irma Wilson.

Scene II—Was staged in Ethel Hesser's home with its lovely atmosphere of old things. Illness invaded the ranks of the scheduled performers, but Germania Kuehn rose nobly to the rescue and sang some old songs, while Bernice Mozinger added to her list of heretofore cultivated talents, that of "melodeonist." Frances Loftus also substituted most ably for some of the absentees.

Scene III—The home of Russel Burns, Bertha Krehbiel and Germania Kuehn assisting. This important day ushered in the election of officers for next year, with the following results: President, Russell Burns; vice-president, Ethel Hesser; recording secretary, Helen Kramer; corresponding secretary, Bertha Krehbiel; treasurer, Lorene Bullerdick; historian, Ruth Stille. With this group of efficient girls we shall look forward to a most successful year.

We have always known that Mary Halliday enjoyed globe trotting. We did feel, however, that she would always be loyal in returning to home soil. Imagine our surprise to learn at the last meeting that in the near future she will go to California to live. There is a very vital reason. It will be Mary Halliday Walker, who goes west. We wish them the best of every thing.

Epilogue—We have brought to the Mu Phi stage our yearly doings. We have made mistakes, but we have tried sincerely to go forward, with emphasis ever upon the ideals of Mu Phi for music, harmony and friendship.

GOLDIE R. TAYLOR.

DES MOINES CLUB

ON the 18th of February we were very happy to entertain Clarice Painter, West Central province president from Manhattan, Kansas, at the home of Ruth Needham. At our regular meeting, the evening of the 2nd of February, our hostess was Kate Holmes Cowper, the wife of the dean of Drake Conservatory. The program was given by Eleanor Rehmann, Marjorie Moss Thomas and Cornelia Williams Hurlbut. For our March 1 meeting Faye Taylor Grimes was our hostess. We elected our officers for the next year at this time.

I neglected to mention in my last letter that we were happy to welcome Carolyn Scott Donato into our midst in January. She is from Mu Upsilon at Rochester, New York. She was married to the head of our violin department at Drake Conservatory during the Christmas vacation. Her husband, Anthony Donato is a graduate of the Eastman School of Music.

The well known concert violinist, Ilza Niemack, has been a guest at some of our meetings and we earnestly hope that she will find the time to be a regular member beginning next fall. She hails from Tau Alpha Chapter.

On the evening of the 29th of February the Civic Music Association presented the Sinfonia Trio as the fourth number on their course. The personnel of the trio consists of Paul Stoye, piano; Anthony Donato, violin, and Franz Kuschan, 'cello. They are Phi Mu Alpha brothers and in turn are each married

to Mu Phi sisters. The Des Moines Club gave a reception in their honor following the concert.

We are looking forward to seeing you all at convention in June, so until then, au revoir.

BEATRICE KUSICHAN.

DETROIT CLUB

HERE'S howdy!

Hope my first letter didn't cause the space cut! Didn't we leave off about Xmas? After that Freida Gagel Harrington entertained us with a real party at the Y. W. C. A. for our social meeting. Then came the special meeting for inspection at the Wardell Hotel, comprising our business session, Delta's initiation and the banquet, which were all made the more enjoyable by Helen Mueller's presence. She makes inspection so pleasant to take.

Our next gathering was for business at Myra Coleman's, and did we do business? My yes! While Myra was still dazed your scribe talked her out of a pot of ivy. (Hope she recalls the circumstances.) A Valentine's eve party at Florence Higginson's, a pot-luck affair, included the boy friends—if at all friendly. At the program meeting at Phoebe Levrens, Winifred Richardson read a paper, Pot-pourri, which brought us all up to date and Marjorie Deyo gave us a lovely program of songs. I, a jet black crow, rushed out to buy the Russian ones. That is inspiration.

March's usual business meeting was held at Florence Smith's in the evening to permit the evening group to attend election of officers. The 15th of the month we provided our friends and ourselves a most entertaining evening by bringing Mr. Ray Allison Heaps of Ann Arbor to Detroit to talk to us in one of our churches on Green Pastures. His lecture was illustrated with slides and accompanied by spirituals sung by a colored quartette.

Today at Katherine Montgomery's, brought us Miss Grace Barber, musical director of the Detroit Community Union, who talked to us and brought with her two talented pupils of piano and violin.

I'm sure our editor will not mind being told publicly how much the last TRIANGLE was

enjoyed. It was so amusing and interesting—its people all warm to the touch! Till we meet again, good luck and a great convention!

EDNA ROBERTSON BARNES.

INDIANAPOLIS CLUB

ANOTHER TRIANGLE letter is due and I find myself without my usual supply of news. Perhaps it's just as well, for the letter must be short and, with convention appearing on the horizon, everyone will want to hear all about it. Certainly the data on convention, which has already arrived, sounds mighty interesting.

The card party we were on the verge of having, at my last writing, has happened and most successfully, too. Martha Wall and her committee worked hard and everything was just grand. The committee and those performing were all dressed in Martha Washington costumes with all the trimmings—white wigs, cameos, etc. Silhouette plaques of George and Martha Washington were the table prizes and besides there was quite a variety of door prizes. When tea was served, we had an entertaining musical program provided by Virginia Leyenberger on her 'cello, and Dorothy Ryker and Lutie Gruber, who sang songs appropriate to the occasion. Little Lutie Ann Gruber also gave some clever readings. So a good time was had by all—and we made some money.

The March meeting was held at Nell Kemper McMurtreys' home. Marjorie Gaston gave a talk on the Symphony Orchestra and analytical notes were added by Grace Hutchings. Oh, yes, we had election of officers and all of us have our respective offices for another year.

April 6 brings our monthly meeting and also a guest, Miss Ethel Hayward, east central province president, who is inspecting us this spring. We are looking forward to her visit with pleasure.

I guess it's best to stop when one has nothing more to say so that means me. Here's to convention and may we all meet in Kansas City.

HELEN SMITH FOLZ.

KANSAS CITY CLUB

GOOD morning, ladies!

This is Station KCAC at Kansas City, Missouri.

We are delighted to introduce Lucille Ferris, who will tell you of the interesting things of the Kansas City Alumnae Club. Margaret Fisher and Esther Robey are doing fine work giving music lessons without remuneration to needy children. Mildred Barney and Ethel Lutz gave marvelous recitals this winter in Epperson Hall.

Marjorie Gard's darling baby girl is starting life by being a regular attendant at Mu Phi meetings.

Our sympathy goes out to Margaret Hull in the loss of her mother, and to Pauline Jolliffe, who lost her brother.

Our February meeting was with Marie Raab and Hazel Youngmeyer at Marie's home.

On March 11 we met with Louise Anderson in her lovely home. We could hardly get down to business for so much "Oh-ing" and "Ah-ing" over her beautiful apartment—these brides get all the breaks.

We have four girls on convention committees: Velma Schreiber, transportation; Olivia Baker, convention news; Lucille Ferris, pamphlets, and Della Borders, model initiation. Dot Ashlock Longstreth of De Soto, Kansas, visited our last meeting.

Hazel Youngmeyer commutes from Fredonia, Kansas for our meetings, and you'll hear a lot from her as she is the new historian. Let me extend a hearty invitation to all to come to Kansas City in June.

Thank you, Lucille.

KCAC now signing off. Your announcer is
HAZEL HESS YOUNGMEYER.

LINCOLN CLUB

THE outstanding feature of the two months that have elapsed since the last news letter was the visit of Clarice Painter who spent two days with us the middle of February inspecting the active and alumnae groups. A Sunday evening gathering was held at the home of Beth King. The actives were apportioned the early part of the evening and the alums the late hours, which, since youngsters shouldn't stay up late, was an appropriate

division of time. Adeline Leffler was responsible for the lovely late lunch that was served during the evening. Monday noon there was an alumnae luncheon in Clarice's honor at the University Club and as many as possible gave her a cheering and appreciative *au revoir*.

At the March meeting, at the home of Bernice Bays, we held election of officers and in recognition of services satisfactorily performed, the entire personnel of the present office holders was reelected. Those who will carry on for another year are Sarah Apperson as president; Jean Decker, vice-president; Bernice Bays, secretary; Marie Laughlin, treasurer; Marjorie Shanafelt, historian, and Ruth Haberly, chaplain.

There is, of course, a great deal of interest over convention and most of the last two meetings has been devoted to that topic.

MARJORIE SHANAFELT.

LONG BEACH CLUB

Long Beach, California

THE last meeting of our club was a very important one for us. It was held at the home of Cora Lee Young, where we were rigidly inspected by our national vice-president, Gladys Stalling. We have been very fortunate in having Gladys present at most of our meetings, parties and programs and hope she will continue her visits with us.

During the business meeting we elected our new officers and selected our new president, Sara Jane Simmons as delegate to convention.

After the business meeting we listened to a very fine program on American music presented by Cora Lee Young. We were honored by the presence of Helen Macey and Edna Schinnerer from Mu Nu Chapter, Los Angeles.

In February we enjoyed a dinner and evening of bridge at the home of Grace Fischer, at Bell. The regular meeting of the month was held at the home of Marian Williams at Compton and our next meeting will be a picnic at Banning Park, Wilmington, where we will have the great outdoors to talk convention and plans for the coming year.

For the summer vacation we will probably plan some picnics and beach parties which

have been quite a success in the past two years.

Best wishes for the Kansas City convention.
ERMA C. GREEN.

LOS ANGELES CLUB

LOS ANGELES Alumnae Club has contributed during the last year to the Music School settlement scholarship benefit performance of Mu Nu, and last but not least the club is a founder-member for the young people's concerts by the Philharmonic Orchestra, and the name appears third on the program list of subscribers.

The philanthropic committee, under the chairmanship of Lucille Tackley, has continued to help a needy family that was so ably provided for last year with Gladys Stalling as chairman. Our girls are assisting in relief work in other fields. Effie Compton and Alice Kraemer are sewing for the Mexican settlement and, by the way, Alice is again active in the club and we are delighted! She and Ethelynn Knorpp are entertaining the club at their regular meeting, Saturday.

Our last meeting was held at Norma Brown's with Effie Compton and Charlotte Anderson assisting hostesses. Sorry I'm not permitted to speak of programs, and as this is my "swan song" I'll trust the next historian to carry on.

Auf Wiedersehen.

INEZ SCHERCK DREIFUS.

MADISON CLUB

THE Madison Club is busy with plans to augment the funds for our scholarship loan fund which, during this period when the dollars are in hiding, is no small task. Last year we made long-period loans, without interest, to two girls who are partially earning their own musical educations, and we hope to make at least one such loan each year, building up a rotating fund which will insure the permanence of such annual loans.

Among the enterprises from which we hope to realize a profit is a tentative schedule of out-of-town concerts, and a local benefit bridge-musical to be given next month.

Some of the members of our club, together with a group of Ila Lunt's a capella singers,

furnished a free Sunday afternoon concert for children at our local settlement house. The program was a most worthwhile contribution to the efforts which are being made to give inspirational entertainment to children from homes which cannot afford to bring it to them.

We are fortunate this spring in having Barbara Hildreth Lathrop back with us. She has been in Chicago for the past few years, studying 'cello at the American Conservatory, and has made several tours in Chautauqua and vaudeville. She gave a group of 'cello solos at our Neighborhood House program and has already, since her return, played a one-hour radio program of 'cello solos.

Viola Anderson will sing, in a concert sponsored by the St. Andrew's Guild, a group of Chinese songs arranged by Bainbridge Crist, which will be sung in costume. Several of our members assisted in Easter concerts and cantatas, among them Erma Duncan, who directed her choir in the cantata *Easter tide*, by Protheroe.

We are very happy to have with us this year another new member, Stella Dizon, from Phi Alpha Chapter, who is now a piano major at the University of Wisconsin School of Music.

BEATRICE WALKER LAMPERT.

MINNEAPOLIS CLUB

THE February business and program meeting was held at the home of Ann Gallogly. Grace Williams was elected convention delegate with Ruby Ledward as alternate. The program was given by Katherine Butterfield, Blanche Moir, Charlotte Skinner and Beulah Durfee.

The luncheons we gave at MacPhail School for three consecutive Saturdays made us \$30 richer.

March 12, Harriet Bratrud entertained the club members and husbands. Dinner was served at 6:30 and music, games and cards followed. Agnes Fryberger gave the story of Natoma. Ethel Johnson sang excerpts from each act with the assistance of Harriet Allen, pianist.

My husband I are very happy to announce the birth of a tiny doll of a daughter, Marilyn

Mae, on Palm Sunday, March 20. Thus our quartette of daughters is complete.

The club met for a business and program meeting at the home of Charlotte Skinner on March 18. Grace Williams was elected president; Charlotte Skinner, treasurer, and Katherine Butterfield, secretary.

Space does not allow me to list in detail the work our girls have been doing since January. Suffice it to say that Harriet Bratrud, Beulah Durfee, Ruby Ledward, Grace Williams, Agnes Fryberger and Ann Gallogly have appeared on several interesting programs recently.

Edna Furlong Johnson has joined our ranks and we are very happy to have her with us again.

Myrtle Weigel Ingvalson is back in the city and expects to come into the club next season.
MAUD SCOTT MANTZ.

NEW YORK CLUB

ON February 27 Edna Werdehoff was our hostess when she entertained with a delightful George Washington bridge party at the clubhouse. Refreshments and prizes were attractive and appropriate, reminding us of our illustrious forefather. Club members and the following guests—Dorothy Hays, Idyll Fagg, and Tommie Ralston—enjoyed Edna's hospitality. It is good to see Idyll again and we are reminded of that first winter of our existence when she was our treasurer.

This month we have endeavored to time our hostess party, business meeting and program to the arrival of our province president, Ada Britton, who was coming to inspect us. So we've gone dashing about at our usual busy pace, carrying on our varied duties and pursuits, but with one ear to the ground, so to speak, to get the signal for the gathering of our scattered, faithful clan. This gathering eventually took place on the night of March 23, when Elta Osthoff was our charming hostess in her attractive new home in Bogota, New Jersey, with Ada Britton as guest of honor. A delicious four-course dinner was served at a table made gay and festive with yellow and pink tulips, and yellow candles.

Did you know—

That Leota Lane, who has been singing at

the Palace Theatre and on the RKO circuit, will open an engagement at Loew's State Theatre this week?

That Ann Mathews, harpist, recently made a flying trip to Indianapolis, where she had a professional engagement and visited at home?

That Lela Rossey has moved from Summit to Jersey City?

That Edna Werdehoff can be justly proud of the girls in her club house family who gave such a clever St. Patrick's minstrel?

That Ethel Bacon is collecting antiques for her home in Mincola, Long Island?

That it's spring—and it's whispered there is romance in the air?

That, herewith, I hand the quill pen to my successor and wish you all a happy summer.
DOROTHY CECIL ULLRICH.

PHILADELPHIA CLUB

THE concert given by Morris Braun was a delightful affair. Our guests were not many, but a very appreciative audience. Irene Garrison gave a dinner party preceding the concert, her guest of honor being Emma Skillman Stone of California.

A letter informs us that Orrie Kaiser had a delightful trip to the West Indies. We are always glad to hear anything concerning the activities of Omicron Alumnae, especially the ones who are not members of our club.

We wish to extend our sympathy to Martha Greenawald Callahan in the death of her husband.

A business meeting was held at the home of Flora Bristow, and our programme meeting was held in Hilda Radey's studio. Our special guest was Adell Harnef, who sang several numbers for us. We also had violin, piano-duos and a paper read on Musical Appreciation After Forty Years of Age.

Our last business meeting was the election of officers and the convention delegate. The officers are: Flora Bristow, president; Helen Behre, secretary; Ruth Houston, treasurer; Helene Weber, historian. Ruth Houston was elected to represent our club at convention.

We are planning a spring frolic at Medford Lakes. Since Dame Winter failed in her share of our planned skating party, we feel sure spring will come to our aid.

Our musical tea will be held in the studio of Clara Kase Bowman. Mr. and Mrs. Bowman, assisted by Morris Braun, will provide the musical part, while we all will provide and serve the tea. Mrs. Bowman is one of the patronesses of the active chapter.

Our club sends best wishes to the chapters who will act as hostesses for the convention. May it be a howling success.

HELENE WEBER.

PITTSBURGH CLUB

ELIZABETH IRWIN, the retiring president, deserves all credit for the success we have had. Her great interest in the club and its future is a constant inspiration.

Jessie Yon sang the Cadman Hour over station KDKA, a program sponsored by the National Federation of Music Clubs.

Margaret Stockdale appeared on a similar program featuring the songs of Frank La Forge.

Leone Woelfel, soprano, substituted recently at the Third Presbyterian Church.

Doris Peoples is studying with Else Sternsdorff.

Beulah Marston was the accompanist for a program given at the Woman's City Club.

Ruth Barnes recently sang on the Drama-Comedy Club and Illinois Club programs which were held in the Hotel Astor, New York City.

Jean Cleavenger is studying with Mr. Ellsworth Giles. She has just returned from New York, where she had an audition at the Columbia Broadcasting Company.

Carolyn Mehaffey scored a great success as Laura in La Gioconda, which was given in part by members of the Tuesday Musical Club.

During the past month other Mu Phis who were heard over station KDKA are Beulah Marston, pianist, and Leone Woelfel, soprano.

In February Jean Zimmerman played a group of violin solos at the Brentwood Christian Church.

The Easter program of the Tuesday Musical Club was in charge of Grace Hall. Other Mu Phis in the program were Leone Woelfel and Grace McMillan.

On March 15 Ada Britton inspected our club. In her honor we had a supper and musicale at the home of Elizabeth Irwin. The

program was given by Jessie Yon, Carolyn Mehaffey and Bernice Austin.

MARGARET STOCKDALE.

PORTLAND CLUB

GERTRUDE GRAVES MARTIN was hostess to our members and invited guests in February. She told in interesting detail of her life spent in India, where her husband was in governmental service for a number of years. Assistant hostesses for this musical tea were our president, Ethel Brown Parker; Vera Smith, Jean Acorn, Lucille Murton and Lillian Pettibone.

Lora Teshner, Dorothy Robinson and Jane O'Reilly are members of our club appearing regularly with the Portland Symphony Orchestra this winter. Of course you will remember reading about Lillian Pettibone's appearing as guest artist with the symphony orchestra in January. We were all very happy about this. We held a line party for her, and she received a great many beautiful flowers. After the concert a reception was given her at the studio of Ruth Bradley Keiser. Needless to say, the critics were unanimous in their praise of her work.

Our March meeting was held at the home of Margaret Kern. This was very interesting and enjoyable to all of us. Although Margery Milnes, who was to sing, was forced to cancel her program on account of a bad cold, our meeting was a great success because it brought us two new members and because we listened to a vivid description of Frances McGill's summer spent in the Orient. Frances had seemingly hundreds of pictures of her travels which increased the interest of her talk. Margaret's spacious home was charming with flowers everywhere; and serving at the table were Jane O'Reilly, Marian Giger, and the hostess.

Jane O'Reilly was selected as our delegate to the convention this year. Jane is a very talented and capable young woman and she is to serve as both our business and musical delegate.

Margaret Skavlan attended our last meeting and we were thrilled to meet her. We hope she will come regularly. Virginia Ferris, too, is another member who joined our group this winter.

That's all, Mu Phi! Hope you have a happy vacation.

JESSIE GREER.

ROCHESTER CLUB

GEORGE WASHINGTON'S birthday was celebrated at our February meeting in the form of a dinner meeting at the home of Virginia Ritz. A business meeting followed. Helen Ferris was elected musical and business delegate to convention and Gerry Briggs as alternate. The program included two papers on Customs and Music of Colonial Times, which were given by Stella Barlow and Elizabeth Langworthy respectively. The musical program was given by Carol Clement playing the Brahms Intermezzo and the Chopin Tarantelle.

During March we enjoyed the visit and inspection of our club by Ada Britton. A special business meeting was held at the home of Gerry Briggs, followed by an informal discussion. Helen Ferris, voice, and Gerry Briggs, piano, presented a brief musical program.

The proposed slate of officers for 1932-33 is as follows: President, Rachel Chamberlain; vice-president, Gerry Briggs; secretary, Doris Dodge; treasurer, Stella Barlow; historian, Carol Clement. These will be voted in at our April meeting.

We are to be Rachel Chamberlain's guests at tea on Friday, April 1. At that time we will have a short meeting to take care of some important business that has come up.

Now, just a brief resume of our schedule to complete the year includes a dinner meeting for April at the home of Stella Barlow. Dr. Howard Hanson, director of Eastman School of Music, is to be the guest of honor. He will give a talk on Modern American Music. You can guess how interesting it's sure to be!

May will be the meeting of annual reports, and we are closing the season in June with an all-American program.

GERRY BROADWELL BRIGGS.

ST. LOUIS CLUB

IN February we met at my home with Maurine Vredenburgh, Edna Goerlich and Vivian Evans assisting hostesses. Ruth Hayden

gave a paper on modern French poetry and Ora Johnson was responsible for a delightful talk given by Miss Chamberlain of Washington University on the modern school of French art, illustrated by stereopticon slides. Marietta Schumacher, soprano; Katherine Carmichael and Orah Lamke, pianists, gave the musical portion of the program.

Marie Trotter entertained the club at her home in March with Pauline Baker, Katherine Carmichael and Maude Turner assisting. I gave a paper on the music of modern Germany illustrated by Thelma Carroll, contralto, who sang some of Richard Trunk's things. Other numbers were given by Ruth Johnson, pianist, and Marion Whitehead, soprano. Edith Habig discussed the Drama of Today in Germany.

Dorothy Gaynor Blake has been giving pre-symphony lectures this season, the mornings of the concerts. Just another one of the lovely things our Dorothy can do exceedingly well.

Edith Habig has appeared as accompanist at the annual concert of the Liederkrantz Choral Society, and is appearing as soloist with Frank Parker, Diseur, at the Principia Academy. The Mu Phi Quartette, composed of Dorothy Neville and Orah Lamke, sopranos; Marie Trotter and Lavine Gauen, contraltos, have been filling engagements. Marion Whitehead, soprano, and I were with them on a program for the unemployment relief committee.

Ruth Johnson gave piano numbers on a St. Patrick's Day program for the R. M. A. and at a colonial tea recently. Madeline Rider and I gave a group of piano and violin numbers for the Drama Study Club.

We are all working hard for our charity costume concert on March 29. More of that later.

Hope to see you all at convention.

CHARLOTTE BURTON STOCKTON.

SAN FRANCISCO CLUB

ONCE more California greets you—this time with perfect weather — sunshine, roses, blossoms n'everything.

Our last meeting was held at Margaret Covey's home in Berkeley.

A meeting of the nominating committee

was held first and our report was unanimously received by those present. Our new officers are:

President, Winifred Forbes; vice-president, Mildred Brown; secretary and treasurer (combined), Agatha Hackett; recording secretary, Gladys King; historian, Marjorie Sterner.

Winifred will be our business and musical delegate to convention and I know you will all be thrilled over her wonderful violin playing and do hope she has a gloriously thrilling time with you all.

We had two charming and talented Mu Phis with us who have just joined our midst. They are namely, Elizabeth Reeves and Mildred Nelson, both from Tau Chapter. We are hoping they will be with us next year.

After a very important business meeting we all were entranced by a wonderful program. Gladys King read a very interesting high-brow paper on modern music and musicians. We all sat in rapt attention, enjoying every word. She very ably illustrated a phase and fancy of one of the modern composers, Harold Hansen. Winifred Forbes, violinist supreme (we think); one of our visitors, Elizabeth Reeves, 'cellist; and Dorothy Wines Reid, accompanist, made a perfect trio for the interpretation of several Moskowski and McDowell numbers.

After much talking we all enjoyed Margaret's delicious refreshments.

Our next meeting will be held at my home on May 15 at 636 Maple Court at 2:30 P. M.

MARJORIE STERNER.

SEATTLE CLUB

OUR annual silver tea was given at the Zeta Tau Alpha House on January 31. Despite inclement weather we had a splendid attendance. We are greatly indebted to Louise Banks and members of the Zeta Tau Alpha Sorority for their assistance in making the tea a success. The following presented an excellent program: 'Cello numbers by Eleanor Hale Southern, accompanied by Ruth DeWitt Peters; vocal group by Emily Hall Bushnell, accompanied by Marion Elwell; piano numbers by Esther Winks Hilburn and a flute and string quartette number by Catherine Moore, Ruth Henley, Winifred Leighton, Juliet Brodine and Phyllis Dent. Mrs. Louise Van

Ogle and Mrs. H. P. Banks presided at the tea table.

The next event was a dessert bridge party held on March 5 at the home of Persis Horton. It was a happy gathering of Mu Phis and their friends, and then, too, we realized a neat little sum to help swell our treasury which was further augmented by raffling a Godey print, donated by Persis.

Beulah Sickles, program chairman, deserves much credit for the fine programs which we have enjoyed throughout the year. At the January meeting Helen Spencer, hostess, we heard a violin group by Louise Oliver, accompanied by Irene Bostwick, piano numbers by Esther Hilburn. Current events were given by Nina Bauer. In February we met with Mary Kalk and listened to piano selections by Isabel Baker, a talk on group piano instruction by Ethel Poole Morck and current events by Rita Bricker. Persis Horton was elected convention delegate with Ferne Flagg as alternate. Vivian MacFarlane will be hostess for March. The program will consist of violin numbers by Ruth Ringstorff, vocal groups, Julia Rose and Olga Reed; piano group, Vivian MacFarlane; 'cello numbers, Eleanor Hale Southern. Mary Kalk will give the current events.

Best wishes for a successful 1932 convention.
FERNE FLAGG.

TOLEDO CLUB

THE last time I wrote you we were looking forward with fear and trembling to a visit from our Great Lakes province president, Helen Mueller. Well! We were not with her long before our fear and trembling melted into real pleasure in entertaining her, and her visit with us was all too short.

At the present writing we are trying to raise money for our delegate to go to convention, for walking would be tough between here and Kansas City so—we are selling chances on a lovely satin quilt (green and gold), which is to be drawn April 20. If anyone wants to take a 10-cent chance on a \$40 quilt just write me and I will see that you get the tickets. We would all love to go to convention, but it's a tough year for Toledo people so will be with you in spirit.

Our sympathy goes out to Mabel Brady who lost her father this winter and to Frances Hamlin and Ada Green who recently lost their mother.

Several of the girls have been on the sick list this winter, but glad to report all are better now. One of the girls, Hortense Heinle, scraped enough together to drive to Florida for a few weeks. Otherwise we have all been home.

We are especially proud of two of our girls who are taking leads in two different operas. Mabel Brady, who is soloist in the Congregational Church, is to have the leading part in The Mikado, a charity play which the Elks are sponsoring. Norma Emmert is to take one of the leads in Fatinitza, which the Scottish Rite Opera Company is to put on in the near future. She will also be a soloist in The Messiah with the Toledo Choral Society.

ETHEL S. THURSTON.

WASHINGTON CLUB

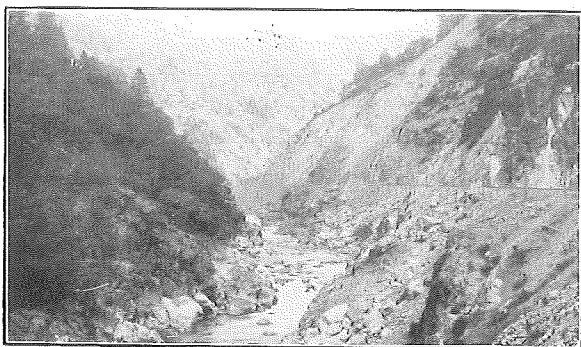
SINCE the last issue of THE TRIANGLE we have had a splendid visit from our province president, Ada Britton. On the evening of March 10, our club in conjunction with Rho Beta Chapter, met at the home of Sylvia Meyer for a musical program and social hour. Greta von Beyer, pianist; Frances Cole, soprano, accompanied by Quinta Frey, and Sylvia Meyer, harpist, appeared for the Alumnae Club. We had quite a large group out and

everyone enjoyed getting acquainted with Ada Britton. The following day the Alumnae Club had a luncheon at the home of Helen Lyon with Ada Britton as guest of honor. The luncheon was followed by a business meeting. During her visit here, Ada was the guest of Helen Lyon.

Quite a number of the girls have been appearing in recital lately. Greta von Beyer was guest soloist with the Tuesday Evening Music Club in a recital at the Arts Club the last of February. Hazel Gibson Wood, soprano, with Charlotte Klein as accompanist, Quinta Jensen Frey, pianist, and Vera Neely Ross, contralto, with Olive Constant Pratt as accompanist, have all appeared on Friday Morning Music Club programs recently. April 1 Charlotte Klein, F. A. G. O., will give the program for the Friday Morning Music Club at the new Metropolitan Memorial Methodist Episcopal Church in Wesley Heights. On February 26, Edith Athey presented her piano pupils in a very charming recital at the Thomas Circle Club.

At our March business meeting the following officers were elected: Edith Athey, president; Thelma Tawney, vice-president; Olive Pratt, secretary; Dorothy Sornbarger, treasurer; Inez Miller, historian, and Helen Bellman, chaplain. Edith Athey was elected to represent us at convention as both business and musical delegate.

VERA NEELY ROSS.



Feather River Canyon, California, another beauty-spot for western delegates to see on the way to Kansas City.
(Western Pacific Railroad)

MU PHI EPSILON FRATERNITY DIRECTORY

FOUNDERS

PROFESSOR W. S. STERLING.....	Cincinnati, Ohio
ELIZABETH MATHIAS	Cincinnati, Ohio

HONORARY ADVISORY BOARD

ELIZABETH MATHIAS FUQUA (MRS. JOHN W.), 1434 Eleventh Street, Greeley, Colo.....	Alpha
MYRTLE PALMER LEACH (MRS. F.), 26 Montrose Street, Malden, Mass.....	Gamma
ELFRIDA LANGLOIS KENT (Deceased).....	Delta
ALICE DAVIS BRADFORD (MRS. L.), 3051 Daytona Ave., Westwood, Cincinnati, Ohio.....	Alpha
ORA BETHUNE JOHNSON (MRS. J. F.), 7179 Washington Ave., St. Louis, Mo.....	Theta
MARY TOWSLEY PFAU (MRS. WM.), (Deceased).....	Alpha
ROXIELETTIE TAYLOR YEATES (MRS. JOHN), Cody, Wyo.....	Theta
ANCELLA M. FOX (MRS.) (Deceased).....	Iota Alpha
HARRIET THOMPSON WRIGHT (MRS. WM. E.), "Rancho del Corazon," Lindsay, Calif.....	Chi
DORIS BENSON (MRS. WALTER), 671 Lincoln Ave., Winnetka, Ill.....	Iota Alpha
PERSIS HEATON TRIMBLE (MRS. CHARLES M.), 1211 N. E. Street, Indianola, Iowa.....	Mu Alpha
LUCILLE EILERS BRETTSCHEIDER (MRS. AUGUST, JR.), 3426 Morrison Place, Clifton, Cincinnati, Ohio	Alpha
ORAH ASHLEY LAMKE (MRS. GEORGE), 138 Linden Ave., Clayton, Mo.....	Delta

NATIONAL OFFICERS, 1930-32

President—BERTHA MARRON KING (MRS. DANIEL P.).....	Mu Epsilon
2829 Park Ave., Minneapolis, Minn.	
Vice-President—GLADYS STALLING (MRS. C.).....	Mu Delta
2644 Hollyridge Drive, Hollywood, Calif.	
Secretary—ALMA M. GEISER (MRS. C. E.).....	Alpha
5719 Hamilton Ave., Cincinnati, Ohio	
Treasurer—MISS DOROTHY PATON.....	Gamma
1911 Austin Ave., Ann Arbor, Mich.	
Musical Adviser—MARJORIE G. KENNEY (MRS. R. E.).....	Sigma
4869 North Hermitage Ave., Chicago, Ill.	
Editor—HELENA MUNN REDEWILL (MRS. F. H.).....	Gamma
835 Hyde St., San Francisco, Calif.	
Alumnae Officer—NORMA MUELLER STONE	Kappa
Hanover, New Hampshire	

National Club House: 57 W. 75th St., New York City. Apt. 102.
Illinois Women's Athletic Club: 111 E. Pearson St., Chicago, Ill.

Chapter Equipment

Chapters and Clubs will please order all equipment from the National Vice-President, Gladys B. Stalling (Mrs. Carl), 2644 Hollyridge Drive, Los Angeles, Calif.

Make checks payable to Mu Phi Epsilon, and accompany each order with your check.

Song Books	\$1.25.....	Treasurers', Index	\$1.25.....
Directories.....	1.50.....	Card Index File	1.50.....
Formal Bids15.....	Cards for File, 100.....	.40.....
Demit Cards15.....	Box Letter File	1.00.....
Triangle Songs25.....	Purple Satin, yd	2.75.....
Examination Paper, sheet	.03.....	White Satin, yd.	2.50.....
Examination Envelope05.....	White Nainsook, yd.17.....
Secretary's Sheets, 100	1.25.....	White Muslin, 36 in. yd.	.15.....
Treasurer's, Ledger, 10075.....	Pattern for Robe45.....
Treasurer's, Journal, 10075.....	Pattern for Stole15.....
Treasurer's Plain, 10075.....	Altar Cloth, complete	6.00.....

No charge for Constitutions, Secret Ceremonies, Affiliation Cards, Perforated File Cards.

HAVE YOU MOVED OR MARRIED?

The Business Manager is very anxious to have THE TRIANGLE reach you each issue. As she has no way of knowing changes of names or addresses unless notified, please fill out the blank below and send to

HELENA MUNN REDEWILL
835 HYDE STREET
SAN FRANCISCO, CALIFORNIA

Name.....

Married name.....

Address.....

Have you a Life Subscription?.....

Last address at which TRIANGLE was received.....

GIFTS

GIFTS

GIFTS

GIFTS

GIFTS

GIFTS

GIFTS

GIFTS

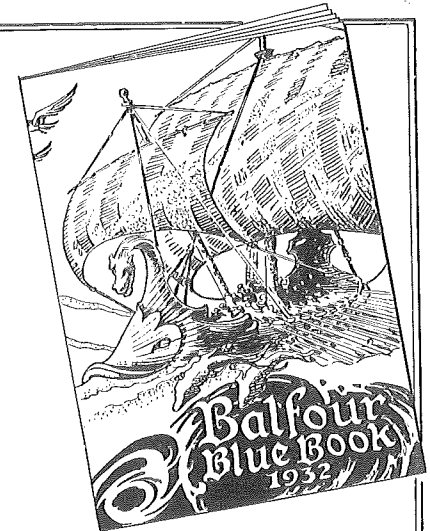
GIFTS

GIFTS

GIFTS

GIFTS

GIFTS




GIFTS-BOTH GREAT AND SMALL -
FOR EVERY OCCASION-SEE THE
BALFOUR BLUE BOOK
YOUR COPY IS NOW READY-

L.G. BALFOUR COMPANY

ATTLEBORO - MASSACHUSETTS

KNOWN WHEREVER THERE ARE SCHOOLS & COLLEGES



THE BOOK FOR MODERN GREEKS

1932

Burr, Patterson & Auld Co.
 MANUFACTURING FRATERNITY JEWELERS
 2301 SIXTEENTH STREET, DETROIT, MICHIGAN

ANNOUNCING

The 1932 Line of Fraternity Jewelry, Novelties,
 Rings, Favors, Programs and Stationery

New Designs -- New Ideas -- New Prices
 All In Tune With The Times

THE 1932 EDITION
 OF
THE BOOK FOR MODERN GREEKS

and a special illustrated price list
 of the badges of your Sorority will
 be mailed you upon request

BURR, PATTERSON & AULD CO.

Manufacturing Fraternity Jewelers
 2301 Sixteenth Street
 DETROIT, MICHIGAN