

MU PHI EPSILON

The

V. 37
4

TRIANGLE

October

1943



GREETINGS



I send love to all my Mu Phi girls.

I pray that all possible blessings will come to *EVERY* MU PHI wherever she may be.

Affectionately yours in Mu Phi

W. S. STERLING, *Mus. Dr.*

THE TRIANGLE of Mu Phi Epsilon

VOLUME 37



NUMBER 4

ETELKA EVANS, *Editor and Business Manager*

BERTHA KREHBIEL, *Associate Editor*

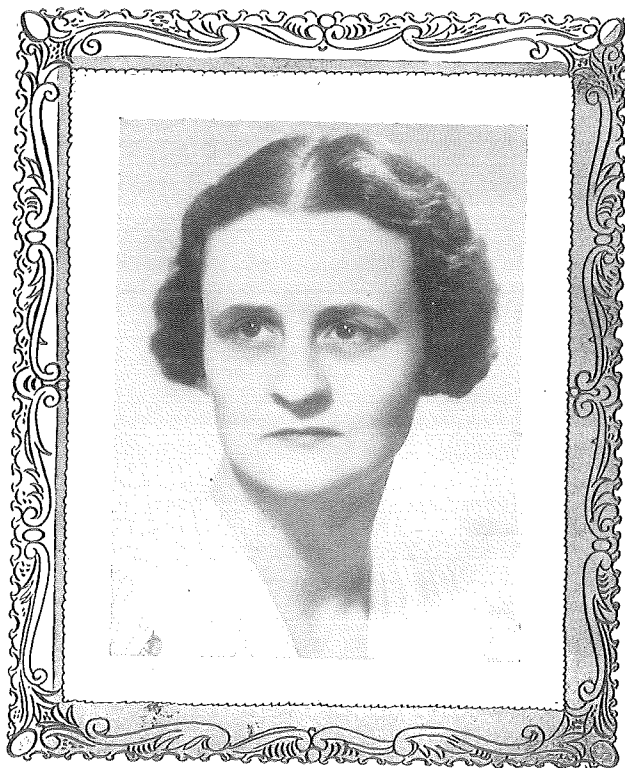
THE CONTENTS

Greetings—W. S. Sterling.....	Cover	II
Proclamation		2
The President's Page.....		3
Mu Phi Epsilon—1903-1943.....		4
A Bit of Mu Phi History.....		5
Greetings from Our Past National Presidents.....		6
Mu Phi Epsilon in the War.....		10
Our Militant Members.....		11
Victory Musicales		13
Achievements		14
Appreciation for Founders' Day Pennies.....		15
1943 Honors		16
In Memoriam		18
A Message to the Alumnae of Mu Phi Epsilon.....		19
Greetings from the Second Vice President.....		20
Convention Headlines		22
Letter from Tau Alpha Chapter.....		24
National Executive Committee Meeting.....		25
Reports of Officers.....		30
National Departments		39
Resolutions		43
Mu Phi Epsilon Annual Audit Report.....		46
Calendars		55
Official Directory		59

• OCTOBER • 1943 •

THE TRIANGLE of Mu Phi Epsilon is published four times yearly, during the months of October, December, February and April, at 2642 University Avenue, Saint Paul, Minnesota, By Leland Publishers, Incorporated (The Fraternity Press), for Mu Phi Epsilon, National Music Honor Society. The subscription price is \$1 per year.

Entered as second class matter at the postoffice at Saint Paul, Minnesota, under the act of March 5, 1879.



Proclamation

DEAR SISTERS IN MU PHI EPSILON:

We are about to bring to a close forty years of Music, Friendship and Harmony in the Sisterhood in which we take such pride. Let us enter into our FOUNDERS' DAY celebrations with a spirit of loyalty to the ideals for which MU PHI EPSILON was founded in 1903, and with an humble rededication of ourselves to the advancement, through music, of democracy and freedom in our beloved country.

AVA COMIN CASE,
National President.



The President's Page

As we enter upon our forty-first year of existence, we have many problems to be solved within our group—some of our own making, and many which have resulted from conditions in the world today. Sincerely conscious of these problems, your National Executive Committee has endeavored to effect legislation which will ease burdensome financial responsibilities and relieve certain other situations throughout our chapters. My annual report to the Committee was written with the general membership in mind, and I ask each of you to read it with great care, for I have tried to explain the national situation in regard to our Honor classification. New and revitalizing legislation has been enacted in almost every national department, and I am anxious that the motions and resolutions printed elsewhere in THE TRIANGLE be very thoroughly read, particularly by the officers of each active and alumnae chapter. The Committee has tried to use wisely the emergency powers granted by Grand Chapter at the 1942 Convention, and welcomes all constructive criticism from chapters or individuals.

Elsewhere, also, in this magazine you will find a word on our definite war activity for the coming year. As you have no doubt guessed, one of the purposes of the joint war activity is to create a fine spirit of coöperation in musical endeavor among the members of the four music sororities. May I ask for the utmost in coöperation from the many active and alumnae chapters of our large society.

One of the grave dangers in connection with the postponement of our 1944 Convention, of which the Executive Committee is fully aware, is that of the possible disintegration of our society. For this reason, we must have a closer relationship than ever before between the chapters and the national organization. No problem is too small to receive the genuine interest of your national officers. I cannot stress this too strongly, for it is impossible to give aid in a situation of which one is ignorant! Report the activities of your chapters often and be assured that you may have the personal visit of a national officer if it is found necessary.

May we all have a profitable and happy year in the knowledge that we are giving of the best that is in us for the progress of the world!

Ava Comin Case

MU PHI EPSILON 1903-1943

Fortieth Anniversary of Our Society's Existence

ETELKA EVANS, *Editor*

FOUR DECADES of useful service to the cause of Music is something of which to be very proud. Looking back over our many accomplishments we can rejoice that our organization was one of the first to raise the requirements demanded of students in Music Schools and Colleges throughout America. During recent years many factors have contributed to placing music in the high position that it now holds in the educational world but let us not forget that great credit must always be accorded Mu Phi Epsilon for taking some of the first steps toward "honor standards" for the music student.

In the life of a human being the years from birth to the age of forty might be divided into three periods—the Formative Period of Childhood; the Enthusiastic, Energetic Period of the Twenties and the More Mature Dignified Period of the Thirties. Mu Phi Epsilon has passed through these three stages of development and has established its principles and ideals and stabilized its position in the music world.

"Life begins at forty" seems to be the slogan of the day and surely this is true of our Society. We have done a great work for the youth of our country, we have to our credit many members who rank among the best musicians of the land but this

is only a beginning, there is much more for us to do and we must press forward with renewed vigor to greater and greater achievements. In the present terrific cataclysm it is the youth of the world which is doing the larger part of the fighting but that youth must have the guidance of older minds to help formulate the plans for the campaign. The same thing is true in the life of our organization. We look to the youthful members to carry forward the torch but the older members must point the way and steady the hands which hold the torch, if we are to reach the highest goals and fulfill our greatest mission.

Fifteen years ago we celebrated our Silver Anniversary and we rejoiced that this could be counted as a "Sterling" Silver Event. The symbol for the Fortieth Anniversary is the Ruby, the color of which suggests the life stream of mankind. It is an interesting coincidence that Thanksgiving Day and Mu Phi Epsilon's Birthday come in the same month and it seems appropriate that in this our fortieth year, we give thanks for the splendid life stream of our Society which is adding its vitalizing pulsations to the Musical Heart-Beat of our land.

May we take the letters of the word "ruby" to form an acrostic with this significance:

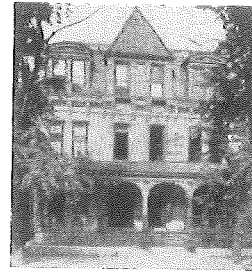
*R*e-dedication of our Sisterhood to a

*U*nity of purpose—that of bringing the

*B*eauty and idealism of the musical art to the

*Y*outh of the present and the future.

Let us go forward into the fifth decade of our existence with joy and courage knowing that, when the fiftieth anniversary arrives, we will reap a



A Bit of Mu Phi Epsilon History

ALMA STERLING FINDLAY
Charter Member

THE accompanying picture is that of the Metropolitan College of Music which was owned by Professor W. S. Sterling and located on East Auburn Avenue, Cincinnati, Ohio. Professor Sterling greatly desired that a Sorority be founded in his School and so, on that memorable day—Friday the Thirteenth of November, 1903—a group of young girl students were gathered together in the middle room on the left side of this double house to consider the possibility of founding Mu Phi Epsilon. Professor Sterling and Miss Elizabeth Mathias were the founders. Our charter was drawn up by Mr. Calvin Vos and Mr. Simon Jordan, both of whom were Phi Mu Alpha Fraternity brothers of Mr. Sterling's at the Cincinnati College of Music. The first meeting was long and serious and we had several other meetings before all the details of the new Sorority were settled. Our charter members included: ELIZABETH MATHIAS (Mrs. Fugua, Greeley, Colo.), President

ALMA STERLING (Mrs. Findlay, Cincinnati, Ohio), Vice-President
ETHEL KIMBALL (Mrs. Vance, Baltimore, Md.), Treasurer
EDITH WHITE (Mrs. Scott, Cincinnati, Ohio), Secretary
ELIZABETH STEWART (deceased), Chaplain
LILLIAN SUTTON (Mrs. Cleland, deceased), Warden
JESSIE YUILLE (Mrs. Yon, Pittsburgh, Pa.), Chorister
JANE BELLIS (address unknown), Historian

On November 26, 1903, we gave our first reception, inviting all the students and teachers of the Metropolitan College.

Our first initiation was held on December 21, 1903, at which time thirteen members were added to the charter group. A second initiation was held February 2, 1904. We brought three fine artists to Cincinnati and gave two operas. We worked very hard but felt well repaid since our performances were most artistically given.

Having very little money in our treasury we increased our funds by imposing fines upon our members—tardiness 5c; absence 10c; failure to prepare on a current event 50c. We were very formal, never calling each other by our first names until after February of the year 1905!!

Professor Sterling gave us our Sorority Rooms, which were on the third floor of the College, and it was here that we held the first Mu Phi Epsilon Convention in June, 1904.

By February, 1907, there were ten Chapters and we were launched on our splendid career which has proven of so much worth to the musical life of the nation.

Greetings from Our PAST NATIONAL PRESIDENTS

DEAR MU PHI SISTERS:

As I read again the words of our creed, words which meet our eye every time we pick up a copy of THE TRIANGLE, I am glad that I am a Mu Phi! I am glad that I am, or have been, a musician. Music has enriched my life; the friendship of my sisters has sweetened it; harmony with my surroundings and the demands and opportunities of my life has been an ideal toward which I have striven, an ideal all unachieved but the struggle has been easier because of my sorority—Mu Phi Epsilon.

As one of the older (or shall I say *earlier*) presidents, one of those who worked in the pioneer days when the vexed question of "honorary basis" was just coming into the very life's blood of our organization, to furnish at once a stimulus and a problem, I am bursting with pride in the achievements of our beloved sisterhood. Mu Phi Epsilon has certainly justified its existence; it has made a nationwide contribution to musicians and music lovers as we have gone farther and farther afield, as chapter after chapter has been added to our roll.

While my own life has not followed the professional music route, in later days, music has always been my greatest pleasure, my greatest medium of escape from life's problems and a stimulus to endeavor. For some years I have been a teacher of English, in high schools or colleges, and have come to realize more and more the esthetic kinship of

great literature and great music. In Monticello College, and later in William Woods College, both Junior colleges for women, I was in close touch with very good music departments, and realized how much such departments did for the students, both those who were themselves working in the conservatory branch, and those who were given the privilege of listening to concerts, student and professional. A school without a good music department is the poorer for it, in my opinion.

I have continued to practice, as I have opportunity; it is my relaxation and pleasure, but is no longer of a professional calibre. Like many others I have found that one must choose one's path and then may not unduly stray therefrom if anything save dilettantism is desired. So—my profession is now teaching, and not the teaching of music. But music does satisfy my esthetic needs. I'd like to follow up the fascinating subject of the necessity of satisfying one's "esthetic needs" if one is to attain harmonious living. The eminent philosophic thinker, George Santayana, has developed the subject in a brilliant and thoroughly rational discussion, so far as estheticism lends itself to the cool demands of reason. But I must return to the much less interesting subject of my own activities.

A few years ago I was teaching in a most unusual school, The Desert Health School, situated some miles south of Palm Springs, in southern California. Our ranch, eleven miles

from that "swanky" winter resort of former times, now the scene of much military training activity, was surrounded by the desert, with its great dunes and ceaselessly shifting sands, on three sides. On the fourth rose the San Bernardino mountains, the highest peaks of which were always covered with snow. A few miles away was the Coachella Valley, noted for its dates, and a little further the rich Imperial Valley, so pleasant in winter, an inferno in summer. This school was for the most part conducted out-of-doors; sun suits were in order, for staff as well as students, and we all soaked in the health-giving properties of sun and clean, dry air. This school, alas, was a casualty of war and is closed for the duration!

Now, I am living and teaching in the Ozarks; my school a one-room, one-teacher high school of two grades and few pupils. It offers me a real opportunity for service and I, in turn, am getting much from these simple folk of limited experience but sturdy stock, mostly of English blood. My esthetic satisfactions come largely from the beauty of our Ozark valley, with the rippling "Spring Branch" and the crystal clear, swiftly flowing waters of the Current River, noted for its rainbow trout, just a few yards from the living porch on which I am typing these hasty lines. To the East and to the West are hills, covered with many varieties of trees; among these are dogwood to beautify the spring, and pines to make a splash of green against the snows of winter. It is lovely; it is restful; it is peaceful, far removed from wars and rumors of wars.

But my husband and I are not entirely divorced from national and

world affairs. We listen avidly to "the news," as given us by radio speakers at almost any hour of the day; we read our newspapers; we are intensely aware of the needs and ferments of our national life; we do long for an opportunity to make our contribution to national and world needs, and, before too long, plan to get again into the current of present-day affairs.

May there soon be an end of man's breaking of God's laws and may we all have restored to us the right to live in harmony with each other and with our surroundings, whatever they may be. For us of Mu Phi Epsilon music will always be one of the great harmonizing forces, a "source of much that is good, just, and beautiful." With Keats we can say of Beauty, with a deeper meaning than is often given to the term,

*"Beauty is truth, truth beauty"—
that is all
Ye know on earth, and all ye need
to know."*

ORA BETHUNE JOHNSON
Fifth National President

It is a pleasure to write a greeting to Mu Phi Epsilon members. Some of the names bring memories of most pleasant associations in past years, while others suggest possible future acquaintances.

I certainly do congratulate each member on the development of our organization. I hope membership in it has brought to each the joy and satisfaction I have felt in being one of this group of music lovers.

My home is still the same to which I came shortly after the 1917 convention at Lawrence, Kansas. I have not been away from it for very long at a time. Fortunately for me, peo-

ple from all over the country come this way and I have been able to enjoy visits from friends I might not have seen had I not been on the road to Yellowstone Park.

I've found piano music interesting all these years. I enjoyed helping some little folks read notes and finger the keys some years ago and now that my own once little boy has grown tall and wears our country's uniform, I find myself with pupils enough to keep me busy five days a week. Our location gives me a lovely drive into town. So with my husband and son, my home and piano, I keep busy and as happy as one can expect to be in these troubled times.

My address is Cody, Wyoming, and I should be happy to greet you, should the trail you follow lead this way.

Sincerely yours,
ROXIELETTIE TAYLOR YEATES
Seventh National President

DEAR SISTERS IN MU PHI EPSILON:

DURING these days when so many of us are giving our ALL to the demands of service or duty—while we are barred from the joy of musical expression in our usual manner, we must carry on with our music flowing full and free in our hearts. As Victor Hugo has written,

*"Be like the bird that halting in her flight
Awhile on boughs too slight,
Feels them give way beneath her,
and yet sings
Knowing that she hath wings."*

We have a source of Infinite strength to draw upon in our beloved Sisterhood, for founded as it is upon our "Triangle" of Music, Friendship and Harmony, it embraces also the sacred symbolic

meaning of the Triangle—God—Nature and Art. And as the expression of Music is universal in Nature, so also is the appreciation of music universal in Man, and the song in our hearts will be heard and understood. And so, with Henry van Dyke let us voice this thought,
*"Music, I yield to thee,
As swimmer to the sea,
I give my spirit to the flood of song;
Bear me upon thy breast
In rapture and at rest.
Bathe me in pure delight and make me strong.*

*From strife and struggle bring release,
And draw the waves of passion into tides of peace."*

Faithfully yours,
HARRIET THOMPSON WRIGHT,
Ninth National President.

LOOKING back to the first convention thirty-eight years ago with only thirteen delegates, one realizes the amazing growth of Mu Phi Epsilon. At that time there were only five chapters; now, we number forty-nine active chapters and a strong Alumnae organization both of which have many projects, educational and philanthropic.

This all round growth has given us a well recognized place in the musical life of our country. Our members are outstanding in every musical field. For this place today we must pay tribute to those first members whose aim and purpose was well defined.

The nucleus upon which they built, Friendship, has stood out clear and steadfast throughout the years. True Friendship stimulates us to greater zeal in our efforts for our beloved art; Music, and Friendship creates Harmony.

Let us increase our efforts to give

to others a greater service; for the world today, more than ever before, needs the three things we stand for: Music—Friendship—and Harmony.

ORAH ASHLEY LAMKE,
Thirteenth National President

MY DEAR MU PHI SISTERS:

In such turbulent times as we are experiencing, it is the duty of all strong minded individuals to give moral and spiritual support to those less fortunate than we.

We must look beyond the despair, degradation and heartbreaks of this war-torn world. We must put aside purely self-centered, material affairs and look beyond to deeds and acts of higher and loftier consideration.

It is evident that, constantly, we must buoy our spirits with those qualities which demand respect and inspire confidence.

Music, the finest of the arts, is one powerful element of this support; one, which knows no barriers and speaks from heart to heart.

Now is the opportune time for Mu Phi Epsilon to reach pinnacles of great height. At no time in the history of the sorority, has our large membership had a greater challenge than at present.

No longer can we bask in the shadows of selfishness. We must forget ourselves; give of our talents to restore broken morale. To be sure, we know that each and every Mu Phi member is conscious of present-day needs, and is doing her bit, as opportunities present themselves. However my admonition and plea at this time is: to work harder; strive further; seek new avenues of approach, and thus give of ourselves as we have never before. In so doing we are working

for the uplift of human nature and the glorification of music, friendship and harmony as expressed in Mu Phi Epsilon.

Never fail to live up to the trust Mu Phi Epsilon placed in you, for MU PHI EPSILON WILL NOT FAIL YOU.—DOROTHY ELIZABETH PATON,
Fourteenth National President.

MY DEAR SISTERS IN
MU PHI EPSILON:

I am proud of Mu Phi Epsilon's ability to adjust itself to changing national and world conditions and to give itself not only through its music, but in unselfish service in the world struggle in which we are now engaged. It was my privilege to attend the annual meeting of the National Executive Committee which was held in Minneapolis July 3, 4, 5. The annual reports from our chapters speak eloquently of the fact that numerically we are as strong as, if not stronger than, in peacetimes; that musically and academically our members are distinguishing themselves as significantly as though there were no distractions such as the present world conflict; that the year's list of honors conferred upon our members is a long and imposing one; and that in addition to all this, our members, both active and alumnae, are engaged in every known type of war service, from collecting scrap metal and kitchen fats to civilian defense work, blood donations through the Red Cross, and service in the WACS, WAVES, SPARS, and Marines. Truly, Mu Phi Epsilon is a magnificent American institution!

Loyally,
BERTHA MARRON KING
Fifteenth National President



Mu Phi Epsilon

IN THE WAR

WACs and WAVES

LaRue Johnson	Dallas Alumnae	WAVE
Carolyn Coe	Mu Nu	WAVE
Joan Lamb	Phi Omicron	WAC
Betty Louise Wagner	Mu Psi	WAC

GOVERNMENT WAR SERVICE

Dallas Alumnae

Florence Volk	Civil Air Patrol
Phoebe Levering	Tank Automotive Center, Ordinance Department
Edith Rice	Tank Automotive Center, Ordinance Department
Joy Thompson	Tank Automotive Center, Ordinance Department

Gamma

Dorothy Paton	Supervisor, Tank Automotive Center, Ordinance Department, Detroit, Michigan
Mary Schindler	Willow Run Bomber Plant
Jean Steet	Willow Run Bomber Plant

Kappa

Catherine Callis	Ordinance Department
------------------------	----------------------

Los Angeles Alumnae

Mary Hobson Crow	Vega Aircraft
Alice TeeGarten	Douglas Aircraft
Margarette Wibble Walker	Rating Examiner, Federal Civil Service

Mu Nu

Leola Blair	Defense War Plant
-------------------	-------------------

Pittsburgh Alumnae

Carolyn Mahaffey	War Plant
------------------------	-----------

Phi Nu

Ramona Blair	U. S. Army Camp
Margaret M. Moran	F.B.I.
Catherine Charlton Perfit	Douglas Aircraft
Lorraine Poulsen	Vega Aircraft

Phi Pi

Joan E. Buller	War Production Plant
Barbara Hobson	War Production Plant
Alta Songer	War Production Plant
Glennis Metz	Civil Service Secretary, Washington, D.C.

IN MEMORIAM

Pvt. Arthur W. Broomell, Jr.	Son of Lois C. Broomell At Ft. Eustis, Va., in basic training
Major George Hart, U.S.A.	Husband of Eve Hart Killed in crash of Yankee Clipper, Tagus River, Portugal
Lieut. Paul Painter	Brother of Ruth Bader Killed in Bomber crash, Boise, Idaho
Marine PFC. William Coleman Strubbe	Son of Emma Strubbe Killed in action in South Pacific

Our Militant Members

CAROLYN COE, *Ensign, U.S.N.R.*

On March 24, 1917, I gave the census taker of Springfield, Illinois, one more nose to count in his reckonings. Nothing particularly phenomenal happened during those years in which I was in the process of growing up. As the years progressed I fell in step with the rest of the children my age, beginning piano lessons at the age of six, spending Saturday mornings at dancing class, getting mosquito-bitten and sunburned at Girl Scout camp every summer, and absorbing the legends and facts concerning Abraham Lincoln.

High School meant to me what it meant to the rest of the students—proms, football games, the gradual lessening of the importance of piano, dancing, and Girl Scouts in favor of literary societies, bridge clubs, and, in my case, membership in the advanced high school orchestra of ninety pieces. I think this was the start of an active interest in music as far as my future was concerned, for the conductor of our group was a woman of great ability and charm and her practice of turning over the baton to me when she wanted to retire to the back of the school auditorium to engage in some critical pre-concert listening made an impression that lasted long after the concert was yearbook-history.

After pouring over the usual volumes of college catalogues, I postponed any decision as to where to spend four years in the pursuit of

whatever one pursues in college, and spent six weeks at the University of Iowa, attending a summer music school conducted by the Department of Music for high school students. By the end of the six weeks, all thoughts of college were mingled with impressions of that campus, so September found me back at Iowa, floundering under the hardships of pledge life as an Alpha Delta Pi and once more studying piano, this time in earnest. I managed to devote enough time to the academic side of my education to send my grade cards home without hanging my head and at the same time made sure not to neglect the social activity on the campus. My activities along that line seemed to lean toward University Chorus, broadcast work, yearbook staff, orientation work, and dance committees, plus the customary sorority life. In 1938 (June) I found myself the possessor of a Bachelor of Arts degree, with a Music major and English and French minors.

Plans were already made for me to continue studying, only at the University of Southern California. I squeezed in six weeks of business school and a shorthand credential before leaving for the West Coast and gave myself a workout typing class notes for practice.

Two years at U.S.C. brought me a Master's Degree, a General Secondary Teaching Credential, and membership in Mu Phi Epsilon. The two years were separated by one period of several months in

which I made good use of my shorthand and typing in a secretarial capacity.

Armed with my degrees, my credential, and my membership in Mu Phi, I sought—and won—a position teaching music at Clearwater Junior High School, in the Compton, California district. This kept me satisfied for a year-and-a-half and gave me a chance to attend Mu Phi meetings, but to stand by and watch a war go by without jumping into the affair somewhere along the line was impossible, and on January 19, 1943, I raised my right hand and swore to obey my Commander-in-Chief, as a member of the United States Navy. I knew teachers were terribly important in the scheme of things, but I wanted to be sure I was serving where I could do the *most* good, not just *some* good.



BETTY LOUISE WAGNER
Corporal, U.S.A.

I have been asked to furnish a bit of my "life-history" for the readers of THE TRIANGLE.

I graduated from Coe College in May, 1942, with a B.M. degree. I was a member of Mu Psi Chapter beginning with my Junior year and continuing active until after my graduation. I was also a Collegiate in the American Guild of Organists. I played the organ in the First Baptist Church and in Turner's Mortuary Chapel in Cedar Rapids and taught piano in the same city. I won the Marshall Bidwell organ scholarship at Coe College in 1938 and a piano scholarship in 1936. Now I'm helping Uncle Sam!!

I joined the WACs in February, 1943, when they were the WAACs. I took my Basic Training at Fort Des Moines, Iowa, and graduated March 6, 1943. I was an Auxiliary until May when I was promoted to

CONTINUED ON PAGE 21



THREE NATIONAL PRESIDENTS
Left to right, Esther Cox-Karge, Delta Omicron; Kathleen Davison, Sigma Alpha Iota; Ava Comin Case, Mu Phi Epsilon.

Victory Musicales

VICTORY MUSICALES: What are they?

VICTORY: freedom for all the arts, freedom to live and let live, freedom to grow and be happy.

MUSICALES: the musician's opportunity to express himself for his own joy and the pleasure of others.

Put the two together and add the word JOINT—and you have the answer to our desire for a real war project for 1943-44. Joint Victory Musicales offered to the general public in February or March by the combined chapters of Delta Omicron, Phi Beta, Sigma Alpha Iota and Mu Phi Epsilon—the admission price to be a Victory Bond or Stamp. This is a project which will need the talents and abilities of each one of us: the performer, the conductor,

the composer, the musicologist, the organizer, the salesman. The possibilities for service are endless and the rewards will be gratifying.

Three of the National Presidents have their heads together making plans for you. Miss Grace Mattern, National President of Phi Beta, who was unable to attend this meeting, has promised the full cooperation and support of her sorority. Watch for specific information in the fall mails to aid you in making your local plans.

Remember: this does not take the place of your already-established war activities; it is an additional offering we musicians are privileged to make toward the return of peace at an early date!—DOROTHY ELIZABETH PATON, *National Coördinator of War Activities.*

ACHIEVEMENTS

N.A.A. Music Research Award Won by Louise Carol Titcomb

MABEL HENDERSON, *Theta*

THE National Alumnae Association of Mu Phi Epsilon can justly be proud of its achievement in wartime activities. It can feel an equally great pride in the fact that in a time when minds are filled with thoughts of the great conflict and hands are busied with war efforts, there are those who turn their spare time to studies connected with their musical profession and who do research work along lines of interest in our own great realm of music. It is very gratifying this year to be able to report that our annual Music Research Fellowship Competition has been a great success, with five of our Mu Phi sisters submitting erudite theses, which are the result of an immense amount of study and labor. This contest is highly rated all over the country, and the fact that we can keep it going in these tense years is another evidence of our influence in helping to maintain a normal condition in our nation.

There are five whose names go on our Honor Roll for research work this year. It gives the National Alumnae Association great pleasure to place at the head of the list the name of Louise Carol Titcomb, Lambda and Mu Phi-at-Large, who by the decision of the judges was given the first place and who therefore receives the National Alumnae Fellowship Award of One Hundred Dollars for her thesis "English Cathedral Music from the Reformation to Purcell."

Louise Carol Titcomb received her B.M. from the Westminster Choir College, her Public School Music Certificate from Ithaca College, and her M.A. from Cornell. She has also studied at the New England Conservatory, at the Leefson-Hille Conservatory of Philadelphia, at Washington University in St. Louis and Fontainebleau in France. She has had private instruction in voice, piano and organ with interesting teachers,



among whom could be mentioned Casadesus, Widor and Vierne of Paris. She has made a study of church music in the Wellesley Summer School and in the English School for Church Music in Chislehurst, England, and has held many interesting positions. At present she is organist and director of three choirs in the First Presbyterian Church of Auburn, New York. We congratulate Louise on her winning of our award—and ourselves on the worth of her splendid thesis, a synopsis of which you will soon see in THE TRIANGLE.

The second place in the contest goes to Catharine Gleason, Mu Upsilon and Rochester Alumnae, for the thesis "Principles of Keyboard Technique in 'Il Transilvano' by G. Diruto." Catharine received her Master's degree from the Eastman School of Music in the Department of Music Literature. She is now a member of the organ faculty of the school.

Another place of honor goes to Ramona Blair for her thesis "Techniques

in the Masses of Jean de Ockeghem." Ramona was a charter member of Phi Mu Chapter at the University of California at Los Angeles, and received both her A.B. and her M.A. there. She was elected to Phi Beta Kappa, studied under Arnold Schoenberg and held the Thomas Fellowship at Radcliffe College.

Another who is given a place on our research Honor Roll this year is Mary Ruth Myers, Mu Upsilon and Mu Phi-at-Large, who submitted an interesting thesis on "The Controversy Regarding the Authorship of the Mozart Requiem." Mary Ruth received her A.B. in music from Juniata College, and her M.A. from the Eastman School of Music. She is at present head of the Piano Department at Juanita College.

To complete our roll of honor for this year we place a plaque with the name of Carolyn Birney, Mu Omicron and now of Theta, whose research work was on the subject: "Michael Haydn—His Life and Works." Carolyn received her B.M. from Cincinnati Conservatory of Music and her M.M. from Cincinnati College of Music. She has taught in several colleges and is at present at Onachita College in Arkadelphia, Arkansas, as teacher of violin. She has played with the Cincinnati Civic, St. Louis Philharmonic, and Arkansas State Symphonies. Her hobby is writing and one of her poems was included in the *Poetry Digest of American Poetry* for 1942. Some of

her poems were enjoyed in our TRIANGLE of April, 1943.

The judges for our contest were men of national reputation. Dr. Karl Gehrkens, well known as a Department Editor of *The Etude*, who has retired from active professorship in Oberlin College and is now Professor Emeritus. He is the Music Editor of Webster's "New International Dictionary."

Dr. Warren D. Allen is organist and Professor of Music and Education at Stanford University. He is the author of *Philosophies of Music History* and "Music Histories" in the *Encyclopedia of Music and Musicians*. Recently his "Our Marching Civilization," which is an introduction to the study of music and society, has been published by the Stanford University Press.

Dr. Quincy Porter is the Director of the New England Conservatory of Music. He has been a member of the board of the League of Composers and of the International Society for Contemporary Music and of the Executive Board of the Music Teachers National Association. He has been composing since 1928 and has written string quartets, a symphony, sonatas for violin and piano and many other works.

We feel very proud to have had such men for our judges and all the girls who entered the contest are grateful to have had such able criticisms of their theses.

Appreciation for the Founders' Day Pennies

ONCE more we wish to thank all the Active and Alumnae Chapters, who by their voluntary gifts to the Founders' Day Penny Fund have made possible the continuance of this very worth-while competition in research. Now that the theses which are entered in the contest are given publication in our TRIANGLE, the musical world is permitted to benefit by the research findings. The girls who have done the deep research and study

have their work set up in permanent form where it can reach the people, and Mu Phi attains new positions of honor because of the study and talent of her members. A new contest will be held this coming year and those Mu Phis who are interested in musicology are asked to enter. All members are reminded that this year we celebrate our Fortieth Anniversary and are asked to please send in their "Pennies."

1943 Honors

Active Chapters

★ **GAMMA**—Mortar Board: Jean Jeffrey (president), Nancy Upson, Frances Vyn; *Phi Kappa Phi*: Harriet Porter (president), Violet Oulbegian; *Kappa Kappa Gamma*: Phyllis Crawford (orientation adviser and officer); *Manager of ice skating and orientation adviser*: Nancy Upson; *Vice-president of Panhellenic*: Frances Vyn; *Marine officer training*: Betty Upson; *Glee Club president*: Patty Spore.

★ **ZETA**—*Pi Kappa Lambda*: Jane Schlosser, Juanita Gahimer; *Mortar Board*: Shirley Madsen, Jane Schlosser; *U. Senior Ring* (given to the most outstanding junior): Shirley Madsen.

★ **IOTA ALPHA**—*Winner of N.A.A. Music Research Award*: Vera Whitlock; *Soloist at Commencement*: Maria Miyamoto; *President, Chicago Woman's Symphony Orchestra Ass'n*: Sydnie Cooley.

★ **KAPPA**—*Pianist with Indianapolis Symphony Orchestra*: Dorothy Munger; *Appointed to Indianapolis Symphony Orchestra*: Harriet Payne; *President of Indianapolis Matinee Musicals*: Lucille Wagner.

★ **MU**—*Who's Who*: Betty Larkins; *Phi Beta Sigma*: Betty Schaupp, Louise Harwell; *Sigma Phi Alpha*: Nancy Betts, Louise Harwell, Martha Frances Laws, Betty Schaupp.

★ **NU**—*Who's Who, Winner state and district N.F.M.C. Contest, Fee and living scholarship at New England Conservatory*: Elizabeth Walker; *First place in Mu Phi Epsilon Composition Contest* (violin): Barbara Crisp.

★ **XI**—*Mortar Board; Pi Lambda Theta; Pi Kappa Lambda; Federation of Women's Clubs Contest* (winner in piano): names not given.

★ **TAU**—*Mu Phi Epsilon Scholarship* joint winners: Dorothy McGregor, Rosamund Hirschorn; *Phi Beta Kappa*: Imogene Horsley, Phyllis Rader; *Pi Lambda Theta*: Rosamund Hirschorn, Ruth McLeod; *Pi Lambda Theta* (president): Mary Durning; *Director UW Musical Comedy for Servicemen*: Helen Haugen; *Soloists with UW musical organizations in concerts*: Phyllis Rader, Dorothy McGregor, Mary Durning.

★ **UPSILON**—*Pi Kappa Lambda*: Eloise Wolf; *Commencement prizes*: Eloise Wolf; *Schubert medal at Commencement*: Eleanor Schellhaus.

★ **PSI**—*Mortar Board*: Elaine Dylla, Marian Hack; *Kappa Delta Epsilon* and *Phi Alpha Theta*: Marian Hack.

★ **OMEGA**—*Sieve and Shears*: Helen Harbour, Peggy Christie, Marion Williams; *Pi Kappa Lambda*: Helen Harbour, Peggy Christie, Marion Williams; *Collegiate Who's Who*: Marion Williams.

★ **MU BETA**—*President of Women Students*: Marjorie Marks; *Honored on Honors Day Program*: Marie Miller, Marie Larson, Betsy Teel, Marjory Marks.

★ **MU GAMMA**—*Phi Beta Kappa*: Rosalie Tookey; *Pi Lambda Theta*: Dorothy Carlson, Mary Helen Bush; *University Honor Roll* (upper tenth): Marie Hassel, Mary Helen Bush, Rosalie Tookey.

★ **MU EPSILON**—*President Minnesota Federation of Music Clubs*: Ethelwynne Kingsbury; *Teaching Fellowship at Smith College*: Lucile Snyder; *Soloists at Commencement*: Lucile Snyder, Jean Nylin, Carol Robinson.

★ **MU ZETA**—*Phi Beta Kappa* (1); *Mortar Board* (2); *Junior Women's Honorary* (5); *Sophomore Women's Honorary* (1).

★ **MU ETA**—*Pi Kappa Lambda*: Marian Sill, Vivian Bradley, Lois Johnson; *All-College Honor Society*: Marian Sill.

★ **MU THETA EPSILON**—*Eastman School of Music Scholarship*: Marjorie Walthall.

★ **MU KAPPA**—*Mortar Board*: Dorothy Jean Gentry, Jean Cash; *Junior Honor Class*: Dorothy Jean Gentry, Jean Cash; *Who's Who*: Elaine Kopp, Anna K. Swinney; *Annual \$50.00 Award to Outstanding Music Student*: Dorothy Jean Gentry; *Letzeiser Award*: Anna K. Swinney.

★ **MU XI**—*State Jr. Chairman, Ill. F.M.C.*: Alma Grambauer; *State Choral Chairman, Ill. F.M.C.*: Helen L. Wilson; *Vice-President and Program Chairman Musicians Club of Women*: Blythe Owen; *President, Women's Organist Guild*: Mary Ruth Craven; *Elected to Musicians' Club of Women*: Frances Huff Butler.

★ **MU PI**—*Mortar Board*: Virginia Klein; *Chi Omega* (president): Ruth Shieber; *Honors upon graduation*: Carol Armstrong.

★ **MU UPSILON**—*Music Chairman N. Y. Fed. Women's Clubs*: Anna Husband; *Soloist premier performance Burrill Phillips Piano Concerto*: Sylvia Muehling; *Members Rochester Philharmonic Orchestra*: Rima Rudina, Lorene Carpenter, Thelma Gaspar Beach, Marguerite Baker Figeroid, Irene Gedney Grabb; *Original Symphony broadcast on a national hook-up*: Ruth Wylie; *Represented on annual Student Symposium*: Adele Drill, Margaret Vardell.

★ **MU PHI**—*Who's Who*: Jane Stull; *White Rose Oration* (local honor): Jane Stull; *Valedictorian 1943 college graduating class*: Sara Hammerschmidt; *Milton T. Baldwin Scholarship*: Frances Kadulski; *Laurels* (local honors to juniors): Janice Schwendeman.

★ **MU CHI**—*Mu Phi Epsilon Senior Award to outstanding music student*: Jane Sykes; *Pi Beta Phi Junior Music Award*: Betty Jane Preston, Dorothy McLandon; *"M" Award*: Ora Louise Cox; *Elected School Beauty*: Jeanne Turner.

★ **MU PSI**—*Magna Cum Laude*: Lenore Sherrard; *Cum Laude*: Rosalyn Kopeccky; *Carrie Mack Prize* (piano): Rebecca Evans; *Crawford Music Prize* (theory): Lenore Sherrard, Rebecca Evans.

★ **PHI BETA**—*Philomenian Scholarship*: Alma Klawitter; *Pan Hellenic Scholarship*: Virginia Swenson; *Pi Lambda Theta*: Virginia Nicholson; *Eta Sigma Upsilon*: Janet Brandt; *Soloists at Commencement*: Virginia Nicholson, Katherine Guldberg; *President North Central Division M.E.N.C.*: Dr. Hazel B. Nohavec.

★ **PHI GAMMA**—*\$100.00 each Award for outstanding work in major*: Charlotte Rossberg Windsor, Elsa Elya.

★ **PHI THETA**—*Winner, Young Artists Contest sponsored by Women's Assoc. St. Louis Symphony* (string section): Dorothy Isbell; *Member of Chorus, St. Louis Municipal Opera*: Dorothy Bailey.

★ **PHI IOTA**—*Cum Laude*: Alice Gilbertson, Mildred Sjoldal, Edith Sunde; *Junior Scholarships*: Elsie Berge, Edith Herseht, Velma Dyrstad.

★ **PHI KAPPA**—*Scholarship in Graduate School*: Helen Grannis.

★ **PHI LAMBDA**—*Alpha Kappa Nu*: Jean Jackson; *"Who's Who"*: Mary M. Live-say.

★ **PHI MU**—*Outstanding Scholarship*: Peggy Airth; *Appearances with Symphony*: Letha Medlin, Dorisse Thomasen, Rosalie Woon; (further honors given at close of school term not yet reported).

★ **PHI NU**—*Phi Beta Kappa*: Ruth Drewes; *Pi Lambda Theta*: Eda Schlatter, Margaret Spiller, Edith Ellersieck; *President M.E.N.C. for Western Region*: Mrs. Helen Dill.

★ **PHI OMICRON**—*Faculty, Cleveland Institute*: Ruth Ross; *Faculty, Cleveland Music School Settlement*: Elaine Sutin, Muriel Carmen; *Scholarship*: Elaine Sutin.

★ **TAU ALPHA**—*Music Chairman, Clinton Defense Council of C.D.U.O.*: Leota Lane; *Flute Soloist with all big orchestras in city*: Mildred Hunt; *Oratorio Performances*: Rose Dirman.

Alumnae Chapters

★ **BOSTON**—*Judge, Mass. F.M.C. Piano Contests*: Kathryn Ford.

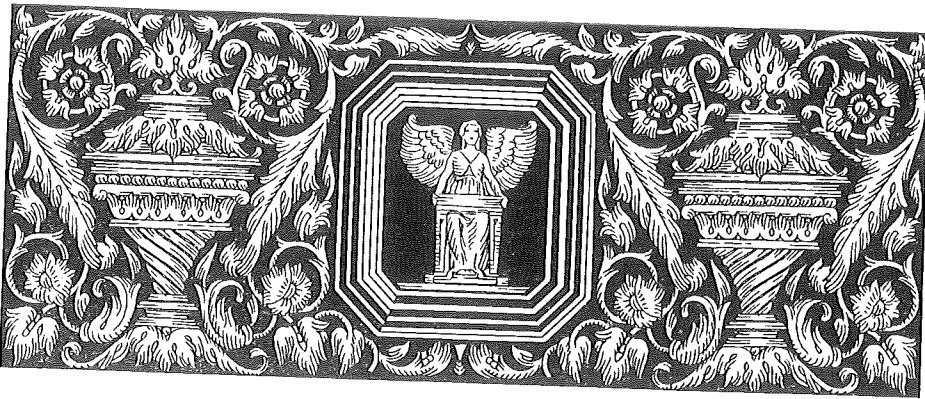
★ **CINCINNATI**—*N.F.M.C. Board Member from Ohio; Chairman Senior Education Dept., Chairman Edgar Stillman Kelley Junior Scholarship*: Etelka Evans.

★ **DES MOINES**—*Assistant Hostess, Camp Dodge Induction Center*: Evelyn Gallagher; *Instructor in Ground School Civilian Pilot Training*: Marie Moun-tain; *Soloist, Drake-Civic Symphony Orchestra*: Kathryn Fletcher Shreves.

★ **LOS ANGELES**—*President, Eta Chapter of Pi Kappa Lambda*: Helen Macey; *Sec'y-Registrar, L. A. Chapter American Guild of Organists*: Helen Macey; *Sec'y, Eta Chapter of Pi Kappa Lambda*: Annina Mueller; *President, Utah Women's Club*: Helen Noack; *3rd Vice-President, Women's Breakfast Club*: Helen Noack; *1st Vice-President, Opera Reading Club of Hollywood*: Emily Sullivan; *2nd Vice-President, Opera Reading Club of Hollywood*: Bernice Park; *Past President, Dominant Club*: Edna Gunnar Peterson; *President, Beach Society of Pasadena*: Cora Lee Young; *Director, Civic Music Ass'n of Pasadena*: Patricia Hellweg; *Full-time war job at Vega*: Mary Hobson Crow; *Toured with Charles Wakefield Cadman*: Marguerite Bitter.

★ **MINNEAPOLIS**—*President Northern Lights District of N.F.M.C.*: Bertha Mar-ron King.

★ **WASHINGTON**—*Honors for compositions entered in Original Composition Contest*: Susannah Coleman, Berenice Wiers; *Natl 2nd Vice-President of Mu Phi Epsilon*: Dr. Charlotte Klein.



In Memoriam

MR. AUGUST BRETTSCHEIDER, JR., passed away suddenly after a brief illness on July 8, 1943. Gus, the husband of Lucille Eilers Brettschneider, was 51 years of age and was beloved by all for his genial, kindly personality. Lucille served Mu Phi Epsilon faithfully and efficiently during the years 1922-28 as National Secretary and National President. During this time many members learned to know her husband and as his business carried him to many cities he often renewed these friendships. Our heartfelt sympathy goes out to Lucille and the young son Karl, aged 12, and we pray God to abide with them and bring them comfort.

ALMA GEISER.

MARY HAYS CHAMBERLAIN. A letter from Henrietta Everitt Winslow, of Salem, Indiana, brings the sad news of the death of Mary Hays Chamberlain, of Salem who was initiated into Zeta Chapter in 1929.

Mary Hays died on March 28th after a year's illness. She was a graduate of DePauw and taught music in the schools of Morocco and South Bend, Indiana. We extend our deepest sympathy to her mother and all her Mu Phi friends.

RICHARD L. FREE, a very promising young musician and the son of Grace A. Free of Shaker Heights, Cleveland, Ohio. Richard was a graduate of Shaker High School and was studying engineering at Case School of Applied Science. He was a member of Delta Tau Delta Fraternity and of the American Federation of Musicians. He enlisted as an apprentice seaman shortly before his eighteenth birthday and expected to be called into active service on May 15, but died on May 10, in St. Luke's Hospital as the result of an injury sustained in a hockey game. Our sincere sympathy goes to our Mu Phi Sister, Grace Free, in the loss of so young and gifted a son.

A Message To The Alumnae of Mu Phi Epsilon

MABEL HENDERSON, *Theta*

EVERYONE knows that Actives soon grow to be Alumnae, and that while the Actives are the growing points of our organization, it is in the Alumnae body that the annual rings of growth are really shown. In order, therefore, that our Mu Phi tree shall show a dependable trunk on which the Active chapters may bud luxuriantly, it is necessary that the life-carrying sap flow through every portion of the Alumnae structure. There are still many Mu Phis over the country who have been unable to avail themselves of the companionship of the National Alumnae Association and who therefore do not help to make Mu Phi a greater influence. Mu Phi needs in its Alumnae Assn. each musician who has been honored with membership.

Feeling the necessity of a larger national membership, and realizing that our present organization makes it almost impossible for small groups to have national connection because of the heavy financial responsibility entailed, the National Executive Committee voted the addition of a new classification to our Alumnae organization. In taking this action, the National Executive Committee evoked the wartime emergency powers granted by the 1942 Convention. If, as we hope, this proves a valuable addition to our organization, it can be made a permanent part of our By-Laws by a vote of the next Convention. This is not an untried plan, for it has proven successful in similar organizations.

The new plan offers three types of membership for our Alumnae, and

thus makes national coöperation available to all who have the honor to be Mu Phis.

1. ALUMNAE CHAPTERS—which remain as they always have been—the loyal, dependable body of Mu Phis, who keep in touch with every phase of the work, fulfill every responsibility, and who, through representation in national Conventions, help to guide the destinies of Mu Phi Epsilon.

2. ALUMNAE CLUBS—Here is an old name, but it brings a new classification. This will take care of small groups that find it impossible to pay the Convention Budget, but which desire to have national connection, and which through such connection could add immeasurably to our national influence. These CLUBS will pay the usual \$1.25 per capita dues and will thus be kept in touch with all national activities. However since they are not required to pay the Convention Budget, they will not be given representation at Convention. Any such group that later desires a vote in Convention, may petition to become a CHAPTER. Upon payment of its portion of the Budget, such a CHAPTER may then have a voting delegate at Convention. We feel that the inclusion of such a group in our National Alumnae Association will help to extend our membership and influence.

3. MU-PHIS-AT-LARGE—This classification is for those who have no opportunity for active connection with either a CHAPTER or a CLUB. Members in this group aid the National Alumnae Association by pay-

ing the usual membership fee of fifty cents, and in return are kept in touch with N.A.A. activities.

With these three types of membership, it should be possible to enroll in the National Alumnae Association every Mu Phi who has demitted from an ACTIVE CHAPTER. And, we are going to need every one, if we are to come through these days as an organization of value. We have done things of real worth up to the present. The future will be of our own making. As individuals and as chapters, we must make our-

Greetings From The Second Vice President

As you already know, the next Mu Phi Epsilon Convention has been postponed, and the M. S. Contest has also been postponed. This will enable ALL Mu Phis to put their shoulder to the wheel for the all-out war effort. For those of you who had planned to submit compositions this year, may I ask that you please hold them for the next contest.

In planning your programs for the coming year may I again suggest that you feature Latin American Music, or music of the United Nations. This, too, will be in keeping with our Victory program.

The Pan American Union here in Washington has issued three very helpful lists of music, choral, instrumental, etc.; which may be had for the asking. Address: Music Division, Pan American Union, Washington, D. C.

1. Selected List of Latin American Song Books, etc., prepared by Leila Fern. Third edition, enlarged, 1943.
2. Latin American Music and Books on Latin American Music, 1942.
3. Music Series.

These lists are invaluable in mak-

ing ourselves count in our own communities. As a national body we have immense possibilities for musical influence, for morale building, and for war aid. Our National Alumnae Association is going forward in war effort. Read in THE TRIANGLE of what we have done, and watch for news of interest this fall.

Mu Phi has lived forty years!—so she begins life anew. Send in your forty pennies to the Founders' Day Fund, and let's make every Mu Phi Alumna a member of the National Alumnae Association.

ing up programs, and I hope you will take advantage of the opportunity, and make a point to get them.

Since we do not have sufficient space under "Chapter Letters" for programs in detail, representative programs will be included on this page from time to time, and I hope you will send me copies of all programs.

Sincere good wishes for a wonderful year. Please write me.

Loyally yours,

CHARLOTTE KLEIN.

WAR BENEFIT CONCERT

The Second Church in Boston

presents

The Alumnae Chapter of Mu Phi Epsilon

Tuesday Evening, December 8,
1942 at 8:30 o'clock

Program

- Chorale Improvisation: Lord Jesus
Christ Turn Now to Us, Op. 65
Sigfrid Karg-Elert
- Beside Still Waters from "The Pas-
toral Psalms," Op. 30, No. 5
Seth Bingham
- Toccata from "The Fifth Symphony"
Widor

FLORENCE FLANDERS, *Organist*

- On Wings of Song . . . *Mendelssohn*
Amaryllis . . . *arr. Parlow*
*Lullaby from "Erminie" . . . *Jacobowski*
June Rhapsody . . . *Mabel Daniels*
Lullaby . . . *Brahms*
VIRGINIA SELLARS, *Soprano*
PAULINE RADFORD, *Soprano*
ANTOINETTE MORASH, *Contralto*
RUTH BIRCH *at the Piano*
*Special arrangement by Antoinette
Morash

- Mazourka Op. 26 *Zarzicki*
En Bateau *Debussy*
Hora-Staccato *Dinicu-Heifetz*
LORENA COLE, *Violinist*
MABEL MUSGRAVE *at the Piano*

- Depuis le Jour from "Louise"
Charpentier
A Spirit Flower . . . *Campbell Tipton*
The Spring Song from "Natoma"
Victor Herbert
VIRGINIA SELLARS, *Soprano*
MILDRED BOWKER *at the Piano*

- Allegro Moderato from "The Second
Trio," Op. 34 *Chaminade*
España from "Rhapsody"
Chabrier-Alder
HOPE WRIGHT, *Violinist*
ORA LARTHARD DEAN, *Cellist*
ALICE ALLEN MELVILLE, *Pianist*

- O, Divine Redeemer *Gounod*
FLORENCE OWEN LUCAS, *Contralto*
VERA WHITE *at the Organ*

Organizations which may wish to sponsor a similar Mu Phi Epsilon Concert are invited to communicate with Mabel Musgrave, 36 Varick Hill Rd., Waban, Mass.

ROCHESTER ALUMNÆ CHAPTER

Assisted by members of Mu Upsilon
Chapter

1. Contralto Solos
Mon Coeur S'ouvre a'ta Voix
from Samson et Delilah
Saint Saens
A Slumber Song of the Madonna
Head
Sing a Song of Sixpence
Malotte
GERALDINE RHOADS TRAVER
2. Piano Solos
Preludes *Debussy*
La Terrasse des Audiences du
CLAIR DE LUNE
Feux d'artifice
NORMA BESS HOLMES

3. Harp Solos
Impromptu Caprice *Pierre*
Scintillation *Salzedo*
ANN NISBET
4. Soprano Solos
Sleep That Flits On Baby's Eyes
Carpenter
The Woodpigeon *Lehmann*
British Children's Prayer . . . *Wolfe*
Life *Curran*
FRANCES DEWITT BABCOCK
5. Anna Magdalena Bach . . . *J. S. Bach*
Impersonated by CAROL FRANK
CLEMENT
6. Vocal Ensemble
In These Delightful Pleasant
Groves *Purcell*
Hush Song *Franke Hayling*
The Two Clocks *Rogers*
Dawn *Curran*
ELIZABETH GIBAUD LORENE CARPENTER
ADELAIDE WARING ANN NISBET
ALMA JACKSON MARGARET CRAIG
MURIEL FAIRBANKS ADELE DRILL
OLIVIA POWELL HELEN MCHOSE
GERALDINE RHOADS TRAVER, *Director*
GLADYS ROSSDEUTSCHER, *Accompanist*

Our Militant Members

CONTINUED FROM PAGE 12

Corporal. I am stationed in the Headquarters Company, Branch A, Camp Ruston, La., which is a branch of the Fifth WAC Training Center. This is a very large camp as we have ten companies of new recruits to train for Uncle Sam.

I joined the WACs because of my special interest in the Army. I have an uncle—Major R. F. Shafer—stationed in the Medical Corps at Camp Breckenridge, Ky., and numerous college chums stationed all over the world. I feel that Mu Phi Epsilon is a great organization, I enjoy the magazine you send out and wish to be a life subscriber. I would very much appreciate any bits of news you would care to write me. I hope to hear from some of you who read this sketch. My address is: Corporal Betty L. Wagner, Headquarters Company, 42nd Training Regiment, Branch A., 5th WAC T.C., Camp Ruston, La.

CONVENTION HEADLINES

Music Educators' Conference

VIRGINIA SHORT, MΦE Representative

THE California-Western Music Educators' Conference which met at the Biltmore Hotel in Santa Barbara from April 18 to 22 really was the Wartime Institute that it was advertised to be. Perhaps the most outstanding personality there was Augustus Zanzig, sent to us from the Treasury Department to conduct a workshop to train leaders for Community Singing. Fifty Music Educators were selected to be his special pupils, but many other interested persons attended the daily sessions held at eight A.M. From his long years and vast experience as a director of recreation, Mr. Zanzig gave us great insight into the psychology of groups of people, the vital importance of the underlying rhythm and the positive statement that only those who love music, those particular songs that they are leading, should attempt to lead others.

Dr. John Lund, of the U. S. Department of Education, spoke to us on the part that music can play in the Victory Corps. There was a panel on War Savings in the School Curriculum, another on Supervisors' Wartime Problems, another on The Problems of School Bands and Orchestras in Wartime, and a fourth on Music in the Wartime Community which was headed by George Hjelte, Director, Office of Civilian Defense, Los Angeles. An interesting feature on this panel was the presence of Michiel Marsman, an engineer at the Lockheed-Vega airplane plant at Burbank, who is doing much to promote music among the employees of that huge concern.

Perhaps the highlight of the Conference was the Military Banquet which was held at the beautiful Montecito Country Club on Tuesday evening. Dinner music, outside of the spontaneous singing of all those present which went on almost constantly throughout the evening, was provided by an orchestra of enlisted men from Hoff General Hospital in Santa

Barbara, organized and conducted by an Army Captain who is a surgeon there. The speakers told of music work being done for the men in the various armed services. One speaker was Miss Vera Ewing, formerly a music teacher at Arizona State College, Flagstaff, who is now a Red Cross worker at Letterman General Hospital in San Francisco. The chief speaker was Capt. Lyle Welch, Special Services Officer, now stationed in Los Angeles. He also was formerly a music teacher, then a Warrant Officer leading an Army Band and because of his splendid work in that field was promoted to his present rank. He spoke most interestingly and informatively on the problems of a music teacher who enters a band in the armed forces.

We had a General Session devoted to Pan-American Understanding Through the Arts and a Pan-American Banquet. There was also an evening meeting devoted to our Allies, Russia, represented through her songs and dances, and China, whose History and Present Status was most interestingly portrayed by Dr. Hu-Shan Han, Professor, University of California, Los Angeles.

Mu Phi's were much in evidence. Of course we were extremely honored to have Helen Dill of U.C.L.A. as president of the California Western Conference. At the banquet on Monday evening she extended the greetings of the Conference to all the Mu Phi's there. We were delighted to have with us Hazel Nohavec of the University of Minnesota who is the newly elected President of the North Central Conference. She brought greetings from Phi Beta Chapter. Another outstanding guest was Hazel Kinscella, who is now a member of Tau Chapter at the University of Washington; she also spoke for Mu Gamma, at the University of Nebraska, where she had been for a longer time. Both of the Hazels had prominent places on our programs. Your official repre-

sentative, Virginia Short, Mu Eta, College of Pacific, as Second Vice President of the Conference, presided at one of the General Sessions and also made brief talks on an Instrumental Panel, on Music Enjoyment, and was on the conductors' panel. The arrangements for the banquet had been made by Ardis Carter, Mu Eta, of Santa Barbara. Ardis also presented her splendid A Cappella Choir at a General Session thereby adding to the laurels of Mu Phi. There were 23 Mu Phi's at the banquet which was presided over by Mary Elizabeth White, Mu Nu, who also brought greetings from the Los Angeles Alumnæ Chapter. Phi Nu, U.C.L.A. was represented by June Sams. Phi Mu, San Jose State College, and the San Francisco Alumnæ Chapter were represented by Frances Robinson. Genevive Hargiss of Arizona

State Teachers College, Tempe, spoke for Xi Chapter, University of Kansas.

(I must add a personal comment on how war affected us. At the beautiful banquet at the Montecito Country Club they made no pretence of serving butter and I am sure that the coffee was "Ersatz.")

Dr. Han told us that in China as soon as one starts school and is called a student that means "A Learning to Live Person." I feel sure that after such a Conference we are more than ever impressed that the chief function of music is to help people to live. As Mu Phi's we can do much service in the War effort to help in giving programs at the USO's and at Army and Navy Camps and Hospitals and spread the gospel of coöperation through participation in music in our own communities.

The National Federation of Music Clubs Holds Wartime Biennial Convention in New York City

RUTH BRADLEY, *Tau Alpha*

FOUR DAYS of business meetings, musical events, with a radio festival of the air, constituted a stimulating convention for the National Federation of Music Clubs this year. It was held at the Biltmore Hotel, from May 6-9.

Mrs. Guy Patterson Gannett of Portland, Maine, was reelected President for the next two years. She is making a splendid leader for our Federated Clubs during these trying War Years!

The Young Artist Contests were held as usual, and the four young Artists were presented in the Victory Concert the third night of the Convention.

This Concert was given in the Ballroom of the Waldorf Hotel, and was a lengthy, exciting affair, consisting of the 4 Young Artists, with a massed Victory Chorus of 400 Women's Voices and James Melton as soloist.

The Edgar Stillman Kelley Junior Scholarship Auditions were held again. Credit for this project goes to our own Mu Phi Sister, Etelka Evans—who has raised enough money (by donations) to

offer each winner a \$750 dollar scholarship over a period of three years.

The closing event was a Dinner, which created much interest in a panel discussion of several international speakers on the subject, "The Values and Uses of Music in Wartime." A musical program by three service men was greatly enjoyed. The Duo Piano Team, Whittemore and Lowe, were Seamen who were favorites on our Tau Alpha Programs last winter—they having appeared on two of our programs at the Town Hall Club with tremendous success.

Mu Phis are doing prominent work in the Federation.

Marie Morrisey Keith (Mrs. Royden J.) is President of the Illinois Federation and took a very active part in the Biennial Convention serving as Chairman of the President's Council. She was appointed Chairman of the Finance Committee and also Chairman of the Budget Committee as well as being elected to the National Board of Directors. In ad-

dition to her work with the Kelley Scholarship, Etelka Evans was elected to the National Board of Directors and appointed Chairman of the Education Department of the Federation. Bertha Marron King was appointed President of the Northern Lights District—she'll make a fine President as all Mu Phis will testify. Mrs. Gannett has called a National Board Meeting in Minneapolis for September 16 to 19 and here Ethelwynne Kingsbury, who is the President of the Minnesota Federation, will act as hostess to the National Board. Mrs.

Gannett has invited me to be present at this meeting and talk about Musical Therapy in Hospitals—and demonstrate its uses. Here is a new field for Music Clubs and musicians to participate in! Musical therapy is now received by doctors, nurses and patients in Hospitals as a bridge which often leads to recoveries and always establishes a better mental outlook. It is more than mere entertainment, when carefully chosen to meet the needs of the listeners. Music Clubs should take an active part in this important work throughout the Country.

LETTER FROM TAU ALPHA CHAPTER

Dear Sisters in Mu Phi Epsilon:

We are growing steadily in membership—which is unlimited—and we shall be exceedingly glad to welcome any Mu Phi to our midst. Our membership includes those who have continued their activities in the musical world both as professionals and teachers, as well as those who have gone into other professions and business.

It will be to our mutual advantage to have you join us for we shall renew and make stronger the ties binding us to our sisters in all parts of the country and you will find warm friends to welcome you and to advise you, if called upon, in the choice of instructors, teachers and schools here.

This past season an interesting series of programs was put on in connection with Town Hall Music Committee in Town Hall Club for the entertainment of Service Men, who took part in the presentation of the programs. The series was most successful and we feel sure that the program for the coming season will be even more interesting and worth-while.

Our regular meetings will be held the second Saturday of the month at two o'clock at the Pan Hellenic Club Room, Beekman Tower Hotel, 49th Street at First Avenue—Eldorado 5-7300. Beatrice MacCue, 5 Patsy Place, Great Neck, N. Y., our President, can be reached in New York City at Cortland 7-9495.

Yours cordially
TAU ALPHA CHAPTER

National Executive Committee Meeting

July 3, 4 and 5, 1943, Curtis Hotel, Minneapolis, Minnesota

A NEW TYPE of procedure was inaugurated at the 1943 Annual Meeting of the National Executive Committee of Mu Phi Epsilon. Since the procedure was new we felt that a brief explanation concerning it should precede the actual Minutes of the Meeting.

About ten days before the committee convened the president sent to each committee member an agenda which outlined all the matters of importance that were to be discussed and gave a tentative schedule of the day and hour for the discussion of each. The president requested that each member read the agenda carefully and come to the meeting prepared to discuss everything contained in it.

The first two days of the meeting were given over to informal, detailed considerations of the pros and cons of each subject and the third day, after each point had been duly considered, the voting took place. This method of conducting the business of the meeting gave each committee member a clear overall picture of many matters, which were interrelated, before the final decisions were made, and everyone felt it to be an improvement over the former manner of acting on each subject separately as it came up for discussion.

Saturday Morning, July 3

All members of the National Executive Committee of Mu Phi Epsilon, the National Executive Secretary-Treasurer and the Auditor met in the National Executive Office at the MacPhail School of Music in Minneapolis at 10:00 a.m. The two new members of the committee were shown the various features of interest in the office after which the following topics were discussed and valuable information concerning them was obtained.

1. THE TRIANGLE surplus and how it is utilized.
2. Possibilities of a drive for Life Subscriptions to THE TRIANGLE.
It was suggested (a) that the Third National Vice President, in her Fall Letter to the alumnae chapters, urge Life Subscriptions; (b) that the National Executive Secretary-Treasurer send to each chapter a list of all its members who hold annual subscriptions with the request that each chapter put on a drive for Life Subscriptions.
3. Manner of paying the second instalment of the Convention Budget Fund.
(a) Chapters have the option of paying the \$40.00 in full; in small amounts as convenient; or waiting until the next convention year.
(b) Checked on the Phi Beta or Phi Zeta deficit of \$10.00 on the 1943 payments. Found it to be Phi Zeta and made correction in the audit.
4. Closing of the National Club House in New York City and distribution of its contents.
5. Most advantageous way to invest the money received from the matured Life Insurance Policies.
(a) Interest-bearing War Bonds or those which mature in twelve years.
(b) The Auditor advised placing some of the money in a savings bank and the remainder in War Bonds. In this manner some of the money would be available for immediate use if needed.
6. Advantages of per capita as opposed to per chapter basis for computing the convention tax.
7. Number of departments necessary for the most efficient and least expensive management of the finances of Mu Phi Epsilon.
(a) Audit without a bookkeeping fee; (b) Audit with a bookkeeping fee. The consensus seemed to be that, since the yearly auditing expense would be practically the same under either system of bookkeeping, the present plan appeared to be the most efficient and accurate.

The discussions were completed at 12:30 and a recess was declared.

Saturday Afternoon, July 3

The first regular business session of the 1943 National Executive Committee meeting was called to order by the president, Ava Comin Case, at 2:30 p.m. in the committee room at the Curtis Hotel, Etelka Evans acting regularly as secretary. All five members of the committee and the National Executive Secretary-Treasurer were present. The meeting was opened with ceremony. The reading of the minutes of the 1942 meeting was waived since these minutes had been approved previously and printed in the October, 1942, issue of *THE TRIANGLE*.

The President called for the Reports of the National Officers.

The reports of the First Vice President; the Second Vice President; the Third Vice President; the Editor-Recording Secretary and the National Executive Secretary-Treasurer were read and placed on file.

The report of the President was deferred.

The President called for the presentation of chapter reports (statistical and financial) by the province governors. These were given in the following order:

Pacific, Margarette Walker; West Central, Mabel Henderson; East Central, Etelka Evans; Great Lakes, Ava Comin Case; Atlantic, Charlotte Klein.

The conditions revealed by these reports were thoroughly discussed and valuable, constructive suggestions were made.

The President asked the First Vice President to prepare a compendium of these reports and suggestions for publication in the October, 1943, issue of *THE TRIANGLE*.

The President called for the reports of the chairmen of national departments.

Public Relations—None had been submitted.

Radio—Informal report given by the President. Formal report to be sent later for publication.

Endowment-Finance—None had been submitted.

Wartime Activities—Read and placed on file.

Manual—The manual as issued constituted this report.

The School of Music at Gad's Hill Center—Was deferred.

The President then asked the National Executive Secretary-Treasurer to present a detailed report of the yearly activities of this office. This was read and gave a clear picture of the great volume of work which passes through the National Executive Office.

The meeting recessed at 7:00 p.m.

Saturday Evening, July 3

The meeting reconvened at 10:30 p.m. with all five committee members and the National Executive Secretary-Treasurer present.

The report of the President was read and placed on file.

The Manual was discussed. Suggestions from chapters and the National Executive Committee were presented and a few changes were agreed upon. The postponement of the 1944 convention was discussed and it was decided to ask a parliamentarian for an interpretation of the wording of the constitution regarding the election of officers in the event the convention is postponed.

A message from Tau Alpha was presented suggesting that a telephone listing for Mu Phi Epsilon be taken in the New York City Telephone Directory. The advisability of securing such a listing in three geographically well located cities—New York, Chicago and Los Angeles—was discussed and it was decided to investigate the cost and advantages of such a procedure.

Moved by the Editor that the National Executive Committee ratify the authorization for Tau Alpha to initiate Helen Traubel "in absentia" through a written pledge of affiliation. Seconded and carried.

The National Executive Secretary-Treasurer informed the committee that a number of the door-knockers which had been used in the National Club House were still undisposed of and asked what should be done with them. Moved by the Second Vice President that the door-knockers be donated to the scrap-metal drive. Seconded and carried.

The meeting adjourned at 12:10 a.m.

Sunday Morning, July 4

All members of the National Executive Committee met in the President's room at 9:30 a.m.

The following matters were brought up for discussion:

1. Alumnae chapters and how to meet their problems.

The President outlined a plan which would allow the forming of alumnae clubs that would keep alumnae members in close contact with the national organization but would not necessitate the payment of the convention tax.

2. The standards that Mu Phi Epsilon wishes to maintain and how to accomplish what we desire in this field.

The President gave a detailed report of her conferences with the various persons connected with matters pertaining to rating. Her clear-cut statements on these subjects were very enlightening to the committee and served to clarify many points which had hitherto been somewhat obscure.

3. The jewelry contract, as affected by the war, and other matters pertaining to the jewelry situation.

The President gave a report of her findings, gathered from an extensive investigation into this very involved matter.

4. Conditions connected with the East Lansing chapter.

The President reported her conferences with the National President of Sigma Alpha Iota in regard to the joint situation of the two groups involved.

5. The President then gave a detailed report of her meeting with the President and National Executive Board of Sigma Alpha Iota for the purpose of clarifying certain matters which had long been misunderstood.

The meeting recessed at 12:30 p.m.

Sunday Afternoon, July 4

The committee members all gathered in the President's room at 3:30 p.m. and discussion was resumed.

1. The management of the National Executive Office.

The President reported her investigations as to auditing and bookkeeping practices and fees and gave details of her conference with a prominent auditor whom she had consulted on this matter.

2. The reallocation of funds for *THE TRIANGLE*.

The Editor presented a plan whereby certain items of expense for circulating *THE TRIANGLE* could be paid by the business office rather than from *THE TRIANGLE* publications budget.

3. The necessity of a change in two of the national departments, Endowment-Finance and Public Relations.

The meeting adjourned at 5:30 p.m. so that the committee could attend the supper and musical given in honor of its members by the Minneapolis and St. Paul chapters.

Monday Morning, July 5

All committee members met in the President's room at 8:00 a.m.

Discussions continued on:

1. The Joint War Activity with Sigma Alpha Iota, Delta Omicron and Phi Beta. The President outlined the plan which had been worked out by the National Presidents of the four sororities.

2. Chapter Inspections

(a) The question of chapter requests for the professional services of the national officers for concerts for the chapters was brought up and it was decided that each officer should be allowed to make her own arrangements for such services.

(b) Chapter inspections are to be authorized whenever necessary as an emergency measure.

3. The National Music Council and the advisability of continuing membership in this organization. The decision was in the affirmative.

4. Advertising in the national music magazines.

5. Problems of Extension

- (a) Possibilities of placing chapters in junior colleges of high standing and in conservatories where academic work is required.
- (b) The petition for the re-instatement of Phi Chapter at Mount Union College, Alliance, Ohio, was presented.
- (c) Possibility of giving financial aid to groups in universities which are interested in installing new chapters but cannot afford the expense of installation.
- (d) Requirements for special elections. A letter from Goldie Taylor, president of Mu Omicron Chapter, was read. This letter asked information on such requirements.

6. Disposition of the money from the matured insurance policies.

The National Executive Secretary-Treasurer was asked to come in to the meeting and give information as to whether this money had been designated for any specific purpose by those who took out the policies.

7. Appointment of a convention chairman for the next convention.

8. Statement by the National Executive Secretary-Treasurer, as to the proportional share which it seemed fair to ask the National Alumnae Association to contribute to the running expenses of the National Society.

The meeting recessed at 12:00 noon and each committee member was instructed to come to the afternoon meeting with her motions written out so that the voting could proceed with as little delay as possible.

Monday Afternoon, July 5

All committee members met in the President's room at 3:00 p.m.

The President read a letter from the director of the Mu Phi Epsilon School of Music at Gad's Hill Center. This served as an informal report from this department.

The President outlined a plan whereby the national organization might take over this school as a big national project, making it an outstanding work for the entire society to support in a large way.

Discussion followed as to whether the National Executive Committee should vote to give a substantial sum to its support during the year 1943-44.

The President read a resolution from Gamma Chapter relative to the granting of one or more scholarships or merit awards at the National Music Camp at Interlochen, Michigan. Since the season was already well advanced it was decided to postpone any action on this matter until another year.

Ballot No. 15—on Special Elections—was presented and voted upon. The first name received an affirmative, the second a negative vote. The President then read the resolution presented by Committee Number 8 and adopted at the Twenty-seventh National Convention in Denver, Colorado, August, 1942, which gave the National Executive Committee "power, during the present national emergency, to act as the supreme governing body of Mu Phi Epsilon." The President then called for the presentation of motions and resolutions. These were presented and acted upon as follows:

1. Moved by the Second Vice President that Bertha King be retained as National Executive Secretary-Treasurer at the salary of \$1,800, as specified by the 1942 Convention and that she be given a two weeks' vacation with pay. Seconded and carried.

2. Moved by the Second Vice President that emergency secretarial help for the operation of the National Executive Office be first approved by the National Executive Committee. Seconded and carried.

3. Moved by the Second Vice President that Mr. A. Edward Westling be retained as auditor and bookkeeper of the society for the year 1943-44. Seconded and carried.

4. Moved by the First Vice President that \$10,000 from the matured life insurance policies of \$15,049.53 be invested in Series G War Bonds and that \$5,049.53 be retained as an emergency fund. Seconded and carried.

5. Moved by the Second Vice President that the cost of sending Mu Phi records

and equipment to a new national officer be included in the expense account of the outgoing national officer. Seconded and carried.

6. Moved by the Second Vice President that the 1944 National Biennial Convention be postponed. Seconded and carried.

7. Moved by the Second Vice President that, because of the indefinite postponement of the 1944 Convention, the National Executive Committee postpone the appointment of a convention chairman until a later date. Seconded and carried.

8. Moved by the Second Vice President that the original Manuscript Contest be postponed to coincide with the date of the next convention. Seconded and carried.

9. Moved by the Third Vice President that the President be allowed a secretarial budget of \$300 for the year May 15, 1943, to May 15, 1944. Seconded and carried.

10. Moved by the First Vice President that, at the discretion of the National Executive Committee, monies be allocated from the emergency fund to establish new chapters, not to exceed ten. Seconded and carried.

11. Moved by the First Vice President that the extension of membership for junior colleges be delayed until a later date. Seconded and carried.

12. Moved by the Third Vice President that \$1,000 from the surplus of the National Alumnae Association treasury be invested in War Bonds, Series G. Seconded and carried.

13. Moved by the Third Vice President, in order to distribute more equably the expenses which fall upon the chapters, such expenses be prorated between the Active and Alumnae chapters. Seconded and carried.

14. The Third Vice President presented the following resolution:

WHEREAS, it is the desire of the National Executive Committee to further the influence and scope of the National Alumnae Association and bring the privileges and inspiration of membership in the national organization within the reach of a large number of loyal Mu Phis, and

WHEREAS, it has been found that there are many small groups of Mu Phis throughout the country who desire connection with the N.A.A. in order that they may aid in the united effort, and

WHEREAS, these groups are too small to become National Alumnae chapters with the financial obligations entailed, and

WHEREAS, investigation of other organizations has revealed a successful plan of having two kinds of alumnae groups, called respectively chapters and clubs,

BE IT THEREFORE RESOLVED, that: there be added to the N.A.A. a second type of alumnae group—to be called Alumnae Clubs—which will be without convention financial responsibilities or representation.

Moved by the Third Vice President that the resolution be adopted, pro tempore, by the National Executive Committee and presented for permanent ratification at the next convention. Seconded and carried.

15. Moved by the Editor that the policy of running a professional card for the Society of Mu Phi Epsilon in each issue of the national music magazines—*The Musical Courier*, *Music News*, *The Musical Leader* and *The Pacific Coast Musician*—be continued and that a similar card be run in *Musical America*. Seconded and carried.

16. The Editor presented the following resolution:

WHEREAS, there is great need for publicity, and

WHEREAS, there is frequently considerable delay in the mails,

BE IT THEREFORE RESOLVED, that: the Public Relations Committee be enlarged to include two new chairmen—one in the east and one in the middle west, leaving the present chairman to represent the west—so that news items for the national magazines may be taken care of with greater dispatch.

Moved by the Editor that the resolution be adopted. Seconded and carried.

17. Moved by the Editor that the circulation expenses of THE TRIANGLE, such as the transcript, the address cards and the postage on returned TRIANGLES sent to incorrect addresses, be charged, against THE TRIANGLE revenue and not be included as part of THE TRIANGLE annual budget. Seconded and carried.

18. Moved by the First Vice President that, since Marguerite Patton, as the wife of Major Patton, no longer has a permanent address, Martha Seifried be appointed chairman of the Endowment Finance Committee and that Marguerite Patton be retained as a member of the committee. Seconded and carried.

19. Moved by the First Vice President that the National Executive Committee authorize a gift of five hundred dollars (\$500) to the Mu Phi Epsilon School of Music at Gad's Hill Center. Seconded and carried.

The minutes of the entire meeting were read and approved.

The meeting closed with ceremony at 7:15 p.m.

ETELKA EVANS, *Recording Secretary*

SOCIAL EVENTS CONNECTED WITH THE 1943 EXECUTIVE COMMITTEE MEETING

Sunday Evening, July 4

A most delightful supper was given in honor of the committee members by the Mu Phis of Minneapolis and St. Paul. Helen Mueller acted as toastmistress and, in her own inimitable way, made everyone happy with her clever introductions and remarks. Each committee member was introduced and gave greetings and thanks for the warm hospitality extended to the committee. After the supper all adjourned to the studio of Countess Helena Morsztyn where a fine program was given by the National President, Ava Comin Case, pianist, and the National Third Vice President, Mabel Henderson, soprano, accompanied by the National Second Vice President, Charlotte Klein. After the program a short social hour was enjoyed.

Monday Noon, July 5

All members of the National Executive Committee and the National Executive Secretary-Treasurer were the guests of the publisher of THE TRIANGLE—Mr. Leland F. Leland—for luncheon at the Curtis Hotel. In addition to a delicious repast there was much interesting conversation and some business discussion which proved enlightening to the newer members of the committee. We are all indebted to Mr. Leland for a delightful break in the strenuous work of the committee meetings.

Reports of Officers

Δ THE PRESIDENT Δ

TO THE MEMBERS OF THE NATIONAL EXECUTIVE COMMITTEE:

I should not like to present any report of the work of this office without first paying tribute to you, the members of the National Executive Committee, and to the Executive Secretary-Treasurer. I should never have believed it possible to receive such genuine coöperation from a group of colleagues as I have had this year, and the confidence you have placed in me has been one of the most gratifying experiences of my life.

My contacts with the chapters as Governor of the Great Lakes Province have not been as personal and as numerous as I should have liked, but lack of transportation funds and the heavy presidential duties have accounted for a major portion of this situation.

I have had the enjoyment and honor of appearing on a number of programs for the chapters this year—sometimes as piano soloist and occasionally as part of a chapter program. These appearances were made possible by the generosity of the chapters in paying my transportation expenses, and I feel that the occasions were mutually beneficial, especially in view of the fact that regular chapter inspections were abolished for the duration.

It has been my privilege to attend the meetings of the National Music Council as representative for the Society. These meetings are attended by well-known men in the music world, and the organization itself is the only one of its kind for the professional musician. Although it has as members many commercial organizations, over three-fourths of its members are from professional organizations. This makes it a really worthwhile Council for such an organization as ours, for it voices the

opinions of the professional musician in the United States. The Council has two main objectives: What can the musician do to aid his country and what can his country do to aid him? This offers many reciprocal possibilities, and it is my personal opinion, as your representative on this Council, that much good may come from its efforts.

As the year 1942-43 draws to a close and I look back over the months, I feel a pride in Mu Phi Epsilon and the place the organization has filled during this war time. Our school chapters have allied themselves enthusiastically with the campus war activities, and our alumnae chapters have been busily engaged in war projects, both as individuals and as Mu Phi groups. No organization should be actively functioning today unless it contributes in some way to the "all out for victory" march of the allied countries. So, it is with gratification that I read the reports of our National Coördinator of War Activities and her committee members. In line with other allied efforts, four music fraternities—Sigma Alpha Iota, Delta Omicron, Phi Beta and Mu Phi Epsilon—have agreed to band together in a joint war activity during 1943-44. The national presidents of the four groups are hoping that in this way it will be possible to accomplish more than could be done by each group separately. I know that it is not necessary for me to ask for your wholehearted co-operation in this project.

It has become increasingly apparent to me that a clarification of Mu Phi Epsilon's classification is a paramount necessity if the organization is not to become completely stagnant. It has been an impossibility for the Extension Department to function effectively in the past few years, for no school is willing to annex a chapter of a society which has no recognized standing. Our attempt to be rated or accepted for membership in the Association of College Honor Societies has appeared to have availed us nothing, for our request for admission has been tabled three times, and the Association has ceased to function in the past two years.

Many changes have taken place in the fraternal world since Mu Phi Epsilon was given honor recognition in *Baird's Manual* in 1936. This listing of our Society came as a result of the untiring efforts of Elizabeth Kidd, who was Chairman of the Honor Standards Committee, later being made Councillor-at-large, and more recently the beloved National President of the Society.

The organizations which appear to fulfill the requirements set up by the 1940 edition of *Baird's Manual* in the honor field are those which elect late in the student's college course, elect on a strict upper percentile basis, have few social and financial requirements, have no functioning alumnae organization, and are in a large field of education. It can easily be seen that Mu Phi Epsilon could not fit into this classification and that, furthermore, it has no desire to. It has been my pleasure this year to visit about one-third of our active and alumnae chapters—en route to business appointments for the Society or to my own professional engagements. As a result of these visits, I have come to the conclusion that the large proportion of our membership wants an organization which is a worthwhile influence in a student's life, one which stimulates and encourages her in her musical endeavors, one which fosters professional attitudes in its members by giving them opportunities to know, personally, women in the professional field, and finally, an organization which will continue to minister to her professional needs and interests after her college days, through its large alumnae association. Furthermore, conferences with directors of music schools throughout the country have proven to me that the majority of them are only interested in a vital society of this type.

Since the 1940 edition of *Baird's Manual* showed us that Mu Phi Epsilon could no longer rightfully consider itself an Honor Society, the National Council, during the 1940-42 biennium, endeavored to have a new classification created for Mu Phi Epsilon, so that it would be possible for us to function as a Professional-Honorary. There appear to be other societies which are floundering between the Scylla and Charybdis of the Professional classification and the Honor classification. My conferences this year, however, have shown no possibility of the creation of such a two-fold classification. That you may have confidence in my information and my personal opinions, I might say that in addition to the conferences mentioned earlier, I have

talked with the former President of the Interfraternity Conference and present Chairman of the Rating Committee recently appointed by the Interfraternity Conference; the present Editor of *Baird's Manual* and Chairman of the Committee on Interfraternity relations of the Conference; the Secretary and the President of the aforementioned Association of College Honor Societies; the President of the Conference of the Deans of Women; the National President of Delta Omicron; the National President and the entire National Board of Sigma Alpha Iota; the National President of Pi Lambda Theta, and many other well-informed fraternity people.

The danger in any classification other than Honor for Mu Phi Epsilon, as certain of our members feel, is more apparent than real. There will always be dangers in local elections to the Society, whether these elections be made under Honor, Recognition, or Professional Classification. In certain chapters where the elections to Mu Phi Epsilon are made through faculty recommendations—as befits a true Honor Society—two freshmen elections were made this past year; so it is possible for mistakes to be made even now. Also, though a student have a straight "A" record, she may have no professional ability or no personality which will assure her success in her chosen field. Further, elections on a strict scholastic percentile are almost prohibitive for an organization such as ours, for lack of dual membership with other music sororities makes our possible election acceptances small; in addition, the limited enrollment in music schools contributes its share of small election possibilities. A true Honor Society must not be selective by reason of high fees and dues. Thus, all of our national projects in which we take such pride, would necessarily have to be limited, were we to attempt to operate on a strict Honor basis. Further, a true Honor Society should have in its chapters all the honor students of the school; this, of course, is impossible for Mu Phi Epsilon since dual membership with other music sororities is prohibited at this time and, if my conferences can be trusted, is sure to continue to be so prohibited.

At the time Mu Phi Epsilon began its campaign for recognition as an honorary, there were no such societies in the music field. During these past years, Pi Kappa Lambda has come into existence and has been recognized as the only Honor Society for men and women in music. Also, many campuses now have chapters of Phi Kappa Phi, a recognized Honor Society for men and women in all fields of education. In such a limited field as music it would seem, therefore, that two Honor Societies would very adequately take care of honor recognition for students. Furthermore, in the past there was only a rather weak Women's Professional Panhellenic Association. Now, this organization—like many other fraternal organizations—is large and wields a tremendous influence in the Greekletter world. Also, within this Panhellenic, there has been formed a small group or committee composed of the music professionals alone. This committee has met two or three times this past year, and seems to be accomplishing something in the way of setting up ethical standards to which all professional societies must adhere. There is a court of appeal, in cases of need, and it is the earnest hope of Delta Omicron, Phi Beta, and Sigma Alpha Iota, that this council of music organizations will fill a long-felt need in creating greater coöperation between its members, and in raising the standards of election into the three societies.

The main objective for Mu Phi Epsilon in 1915 in making the momentous decision to become an honorary society was to raise the standards of its membership—both the standards of scholarship and of performance. This objective has been partially fulfilled. We all realize that the quality of musicianship and scholarship now shown by our members is finer than formerly. However, we must realize that this has come about partially because the standards of music schools have been raised: more academic work is required, and more students take the four-year degree course. We must not lose sight of the fact that our strict election requirements have supplemented the finer quality of work required of students at the present time; these two things have resulted in our fine membership. In restricting ourselves so very definitely scholastically, we have lost some members for the organization who were fine performers, but perhaps because of this very fine performing ability were unable to take the time required to reach the restrictingly high scholarship required.

There is a certain amount of glamour attached to the word "honor" which no one can deny; but there is—as we all know too well—no glamour attached to the task of keeping alive chapters which depend for their existence on small numbers of scholastically high students who may or may not be good performers, and who may or may not have any interest in each other as individuals. It is conceivable that Mu Phi Epsilon could be made so attractive in social, professional, and scholastic qualifications that it would be an honor to be elected to membership—whatever the classification. I am not unmindful of the unwillingness of some of our chapters to accept a classification other than Honor for our organization, but, at the same time, I am not unmindful of the feeling of discouragement and defeat found in many of our chapters in attempting to operate under this very classification.

It is with great regret that I must close this report to you without a conclusive and satisfactory answer to our problems. However, I offer you the hope that I may have the answer soon, for there is to be a meeting of the Rating Committee appointed by the President of the Interfraternity Conference early this fall to which I, as the representative of Mu Phi Epsilon, have been invited. It is my earnest desire that at this time a very definite solution may be found for us, and I shall do my utmost to present the aims of Mu Phi Epsilon in such a way as to guarantee a permanent and satisfactory conclusion of our attempts to make our society one which is a continuing force for progress and happiness in the lives of college and professional women musicians.

Respectfully submitted, AVA COMIN CASE.

Δ THE FIRST VICE PRESIDENT Δ

SISTER PRESIDENT, AND MEMBERS OF THE NATIONAL EXECUTIVE COMMITTEE:

As chairman of the department of Reference and Extension, your First Vice President has had an interesting and busy year. Because of the excellent work done by her predecessor, and the fine support she has given, this department has been able to function much more easily.

The activities of the department of Extension and Reference have been conducted along two lines: first, the promoting of interest in schools toward the establishing of chapters, and second, matters pertaining to the maintenance of the standards of the Society.

Nine new chapter possibilities have been followed through with extensive correspondence. Only one failed to qualify; the other schools, although expressing interest, felt it necessary, due to conditions, to postpone their decision until later. However, it is the opinion of this office that there will be very little expansion for the duration of the war, and that our efforts should be used in the directing and maintaining of our established chapters.

Because of the conditions in which we find the world today, and because schools are hesitant to take on new obligations by the establishing of new chapters, the major work of this office has been done in the second division. The second part of this report, therefore, will cover matters pertaining to the maintenance of the standards of the society. This was carried on through correspondence, letters of encouragement, information, resolutions for "special elections," etc.

Early in the year, a letter of helpful suggestions was compiled by this office and sent to all active chapters. Contents of this letter was furnished by the chapters, with some twenty-seven chapters contributing.

Nineteen new members have been admitted into Mu Phi Epsilon under "special election" with seven failing to qualify. Ten chapters used this method to enlarge their membership, and I would recommend that more chapters take advantage of this means of election.

Twenty letters were written to chapters regarding eligibility problems. Most of these had to do with the determining of the upper fourth or fifth in schools, which led to the belief that many chapters are unable to determine this and, therefore, are not electing all that they really are entitled to. It is hoped that this condition may improve in the coming year with the information found in the manual on this subject.

Extensive correspondence with the National President, as well as with other Members of the National Executive Committee, has been a part of this program—in fact, some three hundred letters have been sent from this office.

Although this report may not convey to you that for which it was intended, all has been done with the purpose and wish to preserve and maintain the strength of Mu Phi Epsilon through these precarious times.

As Governor of the Pacific Province, the problems have been comparatively few, although here, as every where, the problem of keeping active chapters functioning is causing the greatest worry. A letter was sent to each chapter in this province, and all but two replied. For the most part the letters and programs have been encouraging. The one regret of your Province Governor is that the requests for visits to the chapters could not be granted, as personal contacts are invaluable in helping to work out chapter problems.

It has been a privilege and a great satisfaction to serve as a Member of the National Executive Committee of Mu Phi Epsilon, and to enjoy the close association with such fine women as those who represent our Society.

Respectfully submitted,

MARGARETTE W. WALKER

Δ THE SECOND VICE PRESIDENT Δ

SISTER PRESIDENT, AND MEMBERS OF THE NATIONAL EXECUTIVE COMMITTEE:

As Second Vice President of Mu Phi Epsilon, I beg to submit the following report:

The War Song contest with Mr. Edwin Hughes, Dr. Earl Moore, and Mr. John C. Kendel as judges was a major assignment, and while not successful, created much interest. While we had hoped for many more contestants we do feel that the deadline did not allow a sufficient amount of time for all those interested.

Two letters have been sent to the entire membership, suggesting that they exchange programs at least within their respective provinces, and also that they make very definite contributions toward the war effort.

Two letters have been sent to all chapters in the Atlantic Province, and two letters were written for THE TRIANGLE.

Have received numerous requests for program material, which was sent promptly, and in reply received very appreciative thanks from the members.

Have attended several meetings of the Washington Alumnæ Chapter, and at the request of Phi Gamma visited with them in April.

Have at all times stressed the importance of all Mu Phis making a very definite contribution to the war effort.

Respectfully submitted,

CHARLOTTE KLEIN

Δ THE THIRD VICE PRESIDENT Δ

SISTER PRESIDENT AND MEMBERS OF THE NATIONAL EXECUTIVE COMMITTEE OF MU PHI EPSILON:

My duties as National Third Vice President of Mu Phi Epsilon are three-fold as stated in the 1942 By-Laws. First, as the national officer in charge of the National Alumnæ Association, I wish to report that I have kept in touch with all of the chapters of the Association, and have endeavored to give them inspiration, and whatever guidance they desired. This has been done by means of three general letters in fall, winter, and spring, and by individual answers to all the letters and reports that have come from chapters. There were only three of the chapters that did not keep in touch with me in this way during the year.

I am sorry to report that two chapters—Alliance and Austin—have felt it necessary to request inactive status for a time. They have both been splendid chapters and are loyal Mu Phis, and we hope that ere long we can welcome them back into the national organization.

In this connection, I should like to report that it has seemed wise to take action which provides that an alumnæ chapter, petitioning for inactive status, shall

fill out a formal petition as a matter of record. We have, therefore, drawn up such a form, and we hope that the use of it will prevent any misunderstandings, either on the part of the chapter petitioning, or that of the National Executive Committee. Instructions concerning this will be incorporated in the new manual.

My second duty is to organize alumnæ chapters. During this year some groups have been contacted with organization in view. However, not much has been done along this line, because of the feeling that the present time is not the best for stressing new organizations. We feel even more keenly, however, that this is no time for retrenchment in things cultural, and so we have placed our main emphasis on making our present groups more active and more united. We feel that in uniting our efforts, as we do in Mu Phi Epsilon, we have greater strength for giving aid in our national emergency. The National Alumnæ Association has sponsored our Mu Phi Epsilon war program, and the report of our Department of Wartime Activities will make us very proud of what we have done, and will stir us to greater endeavor for keeping our groups actively working together.

Because of our splendid wartime activities, and because we are an organization that definitely helps to raise the morale of our citizenry in a time of need, as well as because we ourselves feel the need for our social contacts, and because we have the longing to hear beautiful music and to express ourselves through this medium, we find our talented membership loyally standing by. We also have been pleased to see many rejoining our chapters, in order that through our excellent war organization, they might offer better service to our country. Statistics on membership and the finances of the National Alumnæ Association may be found in the reports of the National Executive Office.

As national officer in charge of the annual Music Research Fellowship Competition, it is my pleasure to report a splendid response and interest on the part of all chapters, both active and alumnæ, in the Founders' Day Penny Fund, reports of which will be found in the financial records. By means of this fund, we were again enabled to carry on our contest in Musicology which this year had five contestants, offering us theses of exceptional merit. We were honored by having as our judges men of national reputation, who gave most willingly of their time and talents. The judges for our contest were Dr. Warren D. Allen of Stanford University, Dr. Karl Gehrken, formerly of Oberlin College, and Dr. Quincy Porter of the New England Conservatory. As a result of the judges' decisions, the award this year goes to Louise Carol Titcomb, Lambda and Mu Phi-at-large, for her thesis, "English Cathedral Music from the Reformation to Purcell." The second place in the contest goes to Catharine Crozier Gleason, Mu Upsilon and Rochester Alumnæ, for her thesis, "The Principles of Keyboard Technique in Il Transilvano by G. Diruto."

As Province Governor of the West Central Province, I wish to report that I have tried to keep in touch with my chapters by means of general letters in the fall and spring and by personal notes in response to all reports.

Sincerely yours,

MABEL HENDERSON

Δ THE EDITOR Δ

SISTER PRESIDENT AND FELLOWMEMBERS OF THE NATIONAL EXECUTIVE COMMITTEE:

My function in Mu Phi Epsilon is three-fold—that of National Editor of THE TRIANGLE; National Recording Secretary and Province Governor of the East Central Province: therefore, my Report has three sections the most important of which is, of course, that relative to the editing and publishing of THE TRIANGLE.

A little less than a year ago I presented to you and the Grand Chapter my first Biennial Report as Editor and Financial Manager of THE TRIANGLE of Mu Phi Epsilon. Since then we have published four issues—October and December, 1942; February and April, 1943.

The October issue was devoted to the Convention. The December issue carried a number of interesting articles one of which—"The Mass Singing Movement in China" by Liu Liang Mo—was what is known in newspaper parlance

as a "scoop" for THE TRIANGLE was the first musical magazine to print an article on this very unusual phase of the war. Furthermore the article was written, especially for THE TRIANGLE, by the founder of the movement who is now becoming very famous since he has been visiting many educational centers throughout the United States during the past few months telling the same story which our subscribers had the opportunity of reading in their December TRIANGLE.

The December issue also introduced a new section which was entitled "Mu Phi Epsilon and the War." This section, as you know, consists of lists of our members, their fathers, brothers, husbands and sons who are serving in the armed forces or are working in vital war industries.

In February we published the second "All-Article" issue which contained ten excellent articles on erudite subjects by our own members.

The April issue stressed Mu Phi poets and gave a large amount of space to the war activities of our members. Judging from the many kind letters received these issues met with the approval of our readers. My Associate Editor, Bertha Krehbiel, and I are very grateful for your commendation and pledge you our best efforts for the future.

This week marks the third year of my Editorship and I have been taking stock, as it were, of what has been accomplished. We have published eleven issues in all since Bertha and I took over. A few figures will give you a picture of certain phases of the work:

For the October, 1940, issue (edited by my predecessor) the circulation was.....	4,300
For the December, 1940, issue the circulation had increased to.....	4,400
By February, 1941, it went up to.....	4,650
In April, 1941, due to a revision of the subscription list, it dropped to.....	4,550
In October, 1941, we opened the season with.....	4,476
In December, 1941, we printed.....	4,894
This increase was due to the fact that this was our first All-Article issue and we printed 200 extra copies for sale to persons not on our regular subscription list.	
In February, 1942, the circulation was.....	4,650
In April, 1942, it increased to.....	4,800
In October, 1942 (due to another revision), there was a decrease to.....	4,600
In December, 1942, the circulation rose to.....	5,000

And has remained at that figure for the two succeeding issues of the current season.

You will notice that our circulation has increased from 4,300 to 5,000, a gain of 700 copies, but our Budget of \$2,600 per year or \$650 per issue has remained exactly the same although of course it costs much more to print and mail 5,000 copies than it did to print and mail 4,300. Your Editors have cut the corners in many ways always striving, however, to keep up the standard of material which we put into the magazine. We have used 60 lb. paper instead of 70 lb. This is a "two point" saving. 1.—The lighter paper costs less per thousand sheets and 2.—The magazine is not as heavy to mail and, therefore, costs less postage per copy. Another means of economizing to which we resorted was that of two issues—December, 1942, and February, 1943—with only fifty-six pages instead of the usual sixty-four. However this economy was somewhat discounted by the fact that the October, 1942, issue contained sixty-eight pages. This was necessary in order to carry all the Convention Reports, Minutes, etc. In spite of all we could do it has cost us this year, as you will see by your Audit, \$2,664.63 to publish and circulate THE TRIANGLE. This is \$64.63 more than our Budget. However—believe it or not—we still have a balance of \$31.78 in the bank with a bill of \$8.40 for postage still to be paid which reduces our balance to \$23.38. This phenomenon of a balanced budget in spite of the higher cost of circulation, was made possible by the careful saving of the two previous years.

We started from scratch in 1940—thanks to the kindness of the National Treasury which wiped out the small deficit that existed in THE TRIANGLE account at the

close of my predecessor's régime. In the spring of 1941, after our first year of publication, we had a surplus of \$31.29. Last year we managed to save enough so that we had a balance of \$79.41 and that has enabled us to meet the expense which exceeded our budget during the current season.

We hope for miracles in the future but we would like to ask for an increase in our budget so that we will not be as cramped as we have been and can add new features for the betterment of the magazine. We feel that in all probability expenses will be considerably higher next year and of course we sincerely hope that the circulation will continue to increase even though it will cost us more to publish and circulate if it continues to rise as it has done during the past three years.

Trusting that you will give this matter careful consideration I bring this somewhat statistical portion of my Report to a close and pass on to the section pertaining to my duties as National Recording Secretary.

In this capacity I have attended the Pre-Convention Meeting of the National Council, the Grand Chapter Convention and Post-Convention Meeting of the National Executive Committee—all of which were held in Denver, Colorado, during the last of August, 1942—and have kept the minutes for the three meetings.

The minutes for the Grand Chapter were very complicated and, although we employed a professional stenographer, the minutes had to be carefully checked and prepared for publication in *THE TRIANGLE*. In this difficult and time-consuming work I had the efficient coöperation of Bertha Krehbiel, delegate from the Cincinnati Alumnae Chapter, and Martha Seifried, delegate from Mu Omicron Chapter. I wish at this time to publicly thank these two loyal Sisters for their kind assistance. When we had completed our work the minutes were sent to the Committee, appointed at the Convention by the National President, for the purpose of reading and approving them for filing and publication. The minutes were approved without correction and appeared in the October, 1942, issue of *THE TRIANGLE*.

As Province Governor my activities have consisted of sending a Form Letter to all Chapters in my Province and answering the numerous personal letters which have come from the Chapters and individuals belonging to the East Central Province.

Respectfully submitted,

ETELKA EVANS

CALENDARS

These special calendars are for Presidents, Secretaries, Treasurers, and Historians. Kindly distribute same for filing in official record books.

MU PHI EPSILON NATIONAL EXECUTIVE OFFICE

BERTHA M. KING, NATIONAL EXECUTIVE SECRETARY-TREASURER
MacPHAIL SCHOOL OF MUSIC
MINNEAPOLIS, MINN.

ACTIVE CHAPTER CALENDAR—Sept., 1943-June, 1944

Obligations of Active Chapter Officers to National Officers

FIRST WEEK OF SCHOOL. OFFICERS meet to plan for the coming year. Rehearse and memorize ceremonies. Order supplies from National Executive Office (address given above).

SECRETARY send to National Executive Office, names and addresses of all members who were active last year but are inactive at present. Also send a similar list to the President of your local Alumnæ Chapter.

SECRETARY notify all national officers of changes in names and addresses of chapter officers, if any, from June lists.

Appoint committee for Founders' Day Celebration.

November 1 —Study Constitution, By-Laws, and Manual. Study Parliamentary Law.

HISTORIAN'S NEWS LETTER FOR THE TRIANGLE due at office of National Editor, Etelka Evans, Conservatory of Music, Cincinnati, Ohio. These letters and any other article for THE TRIANGLE *must be typewritten*, double-spaced, using one side of paper only and leaving generous margins all around. Give chapter name as well as name and location of school at top of page 1. Sign your own name at end. Condense letters to 150-word limit. Send only condensed recital programs unless your news letter is very brief. Send in pictures and write-ups for (1) outstanding members eligible for Interesting Mu Phis column; (2) Mu Phi Mothers and Daughters; (3) Interesting Professional Mu Phi Husbands and Wives; (4) WAVES, WACs, MARINES, SPARS, and lists for "Mu Phi Epsilon in the War" (see pages 27-32 of April, 1943, issue). Poetry by members appreciated at all times; articles for the All-Article issue; also timely musical articles by outstanding Faculty Members. Don't call sisters Mrs. and Miss; always use first names. *Note change of date: November 1 is the dead-line. Due to slow-down of mails and printing we MUST have this material on the 1st rather than the 15th of November.* No material sent after this date can be used.

MU PHI EPSILON PUBLICITY: Remember contributions to the National Scrap Book. Paste clippings on white paper (8x11-inch size, please). All clippings must mention *Mu Phi Epsilon*. Send same to the Department of Public Relations as follows: easterners send to Margaret Sherman, Chairman, Eastern Division, 165 W. 83rd St., New York, N. Y.; mid-westerners send to Anna Burton De Graw, Chairman, Mid-Western Division, 11109 So. Hoyne Ave., Chicago, Ill.; and westerners send to Bernice Park, Chairman, Western Division, 1423 Warnall Ave., West Los Angeles, Calif.

November 13—FOUNDERS' DAY. FORTIETH ANNIVERSARY.

FOUNDERS' DAY PENNIES: An annual Founders' Day Fund, sponsored by the National Alumnæ Association for the purpose of stimulating research in musicology, was authorized by the 1938 National Convention. Payment to this fund is voluntary, but every Mu Phi is asked to give a penny for each year of Mu Phi Epsilon's existence. These pennies—40 for this year—are to be presented at your Founders' Day celebrations. Send total amount to the National Executive Office for the Research Fellowship Fund. Make checks payable to *Mu Phi Epsilon National Alumnæ Association*.

November 15—TREASURER send to National Executive Office (1) first part of Annual National Tax (\$1.75 per capita); (2) one list of names and correct addresses of active members (be sure to give names in full, including married and maiden names, and state whether such addresses are to be used for TRIANGLE mailing); (3) TRIANGLE annual subscriptions (\$1.00 each) for all members without life subscriptions.

December 1 —TREASURER send \$20.00 to National Executive Office, this being first installment to Convention Savings Fund (pooled fare for delegates and convention expense). *Optional. See footnote No. 3.*

February 1 —CONTESTANTS, Music Research Fellowship: send notice of intention to enter the contest, to the National Third Vice President, Mabel Henderson, 761 Belt Ave., St. Louis, Mo.

March 1 —HISTORIAN'S TRIANGLE news letter due at National Editor's office (see November 1 for directions). *Note change of date: March 1 is the dead-line date!*

April 1 —TREASURER send \$20.00 to the National Executive Office, this being second installment to Convention Savings Fund. *Optional. See footnote No. 3*
MANUSCRIPTS for N.A.A. Music Research Fellowship Contest due on or before this date. Send application and material to National Third Vice President (address above).

April 15 —TREASURER send to National Executive Office (1) second part of Annual National Tax (\$1.25 per capita) and (2) list of names and addresses of second semester active members.

May 15 —End of fiscal year. Treasurer's books must be examined and approved by Chapter President and Finance Committee.

June 1 —PRESIDENT send annual report (statistical), also names and addresses of new officers, to National Executive Office on special report forms and blanks for officers' lists provided by that office.
TREASURER send annual financial report signed and approved by Chapter President and Finance Committee to National Executive Office on blanks provided by that office.

NOTES: No. 1—Special order blanks in triplicate, accompanied by check, must be used for purchasing sorority insignia. All orders must be sent by Chapter Treasurer direct to the National Executive Office. Make checks payable to MU PHI EPSILON. *Use only the order blanks which are issued by JOSTEN'S, the official jewelers. Add 10% Federal jewelry tax to all jewelry payments.*

No. 2—All matters of national and chapter policies shall be referred to the National President, Ava Comin Case, School of Music, University of Michigan, Ann Arbor, Mich.

No. 3—The payment of 1943-44 Convention Savings Fund installments is optional this season because war conditions necessitate postponement of the 1944 National Convention. Chapters which wish to pay this year as usual and thus finish their obligation for the next Convention may do so; other chapters may defer their payments until the year before the next Convention. A very few chapters have not completed their 1942-43 payments to this Fund; such chapters may complete those payments during 1943-44.

No. 4—Annual subscriptions to THE TRIANGLE expire with the October issue, hence the necessity for prompt Renewals in order that they may be in effect for the December issue.

These special calendars are for Presidents, Secretaries, Treasurers, and Historians. Kindly distribute same for filing in official record books.

MU PHI EPSILON NATIONAL EXECUTIVE OFFICE
BERTHA M. KING, NATIONAL EXECUTIVE SECRETARY-TREASURER
MacPHAIL SCHOOL OF MUSIC
MINNEAPOLIS, MINN.

ALUMNAE CHAPTER CALENDAR—Sept. 1943-June, 1944

Obligations of Alumnae Chapter Officers to National Officers

September 20—OFFICERS meet to plan for coming year. Rehearse and memorize ceremonies. Order supplies from National Executive Office (address given above).

PRESIDENT send properly filled out demit cards, for all members entitled to them, to National Executive Office to be placed on file.

October 1 —SECRETARY notify all National Officers of changes in names and addresses of chapter officers, if any, from June lists.
Appoint committee for Founders' Day Celebration.

October 15 —TREASURER send to National Executive Office (1) N.A.A. membership dues (\$.50 annually or \$7.50 life); (2) National Tax (\$.75); and (3) TRIANGLE annual subscriptions (\$1.00 each) for all members without life subscriptions, accompanied by typewritten list with names and addresses of members, also chapters in which they were initiated. Life subscriptions, \$11.50 each. Make checks payable to *Mu Phi Epsilon National Alumnae Association*.
The National Executive Office provides forms for the typewritten lists. A separate section designated as "B" on the lists should indicate those members who have life subscriptions to THE TRIANGLE. Such members, of course, are exempt from the \$1.00 annual subscription.

November 1 —Study Constitution, By-Laws, and Manual. Study Parliamentary Law.

HISTORIAN'S NEWS LETTER FOR THE TRIANGLE due at office of National Editor, Etelka Evans, Conservatory of Music, Cincinnati, Ohio. These letters and any other article for THE TRIANGLE *must be typewritten*, double-spaced, using one side of paper only and leaving generous margins all around. Give chapter name as well as name and location of school at top of page 1. Sign your own name at end. Condense letters to 150-word limit. Send only condensed recital programs unless your news letter is very brief. Send in pictures and write-ups for (1) outstanding members eligible for Interesting Mu Phis column; (2) Mu Phi Mothers and Daughters; (3) Interesting Professional Mu Phi Husbands and Wives; (4) WAVES, WAGs, MARINES, SPARS, and lists for "Mu Phi Epsilon in the War" (see pages 27-32 of April, 1943, issue). Poetry by members appreciated at all times; articles for the All-Article issue; also timely musical articles by outstanding Faculty Members. Don't call sisters Mrs. and Miss; always use first names. *Note change of date: November 1 is the dead-line. Due to slow-down of mails and printing we MUST have this material on the 1st rather than the 15th of November. No material sent after that date can be used.*
MU PHI EPSILON PUBLICITY: Remember contributions to the National Scrap Book. Paste clippings on white paper (8x11-inch size, please). All clippings must mention *Mu Phi Epsilon*. Send same to the Department of Public Relations as follows: easterners send to Margaret Sherman, Chairman, Eastern Division, 165 W. 83rd St., N. Y.; mid-westerners send to Anna Burton De Graw, Chairman, Mid-Western Division, 11109 So. Hoyne Ave., Chicago, Ill.; and westerners send to Bernice Park, Chairman, Western Division, 1423 Warnall Ave., West Los Angeles, Calif.

November 13—FOUNDERS' DAY. FORTIETH ANNIVERSARY.
FOUNDERS' DAY PENNIES: An annual Founders' Day Fund, sponsored by the National Alumnae Association for the purpose of stimulating research in musicology, was authorized by the 1938 National

Convention. Payment to this fund is voluntary, but every Mu Phi is asked to give a penny for each year of Mu Phi Epsilon's existence. These pennies—40 for this year—are to be presented at your Founders' Day celebrations. Send total amount to the National Executive Office for the Research Fellowship Fund. Make checks payable to *Mu Phi Epsilon National Alumnae Association*.

- December 1 —TREASURER send \$20.00 to National Executive Office, this being first installment to Convention Savings Fund (pooled fare for delegates and convention expense). *Optional. See footnote No. 3.*
PRESIDENT write a fall report-letter to the National Third Vice President, Mabel Henderson, 761 Belt Ave., St. Louis, Mo. Include report on Founders' Day; send yearbooks and program data.
- February 1 —CONTESTANTS, Music Research Fellowship: send notice of intention to enter the contest, to the National Third Vice President, Mabel Henderson (address above).
- March 1 —HISTORIAN'S TRIANGLE news letter due at National Editor's office (see November 1 for directions). *Note change of date: March 1 is the dead-line date!*
PRESIDENT write a spring report-letter to the National Third Vice President (address above).
- April 1 —TREASURER send \$20.00 to the National Executive Office, this being second installment to Convention Savings Fund. *Optional. See footnote No. 3.*
MANUSCRIPTS for N.A.A. Music Research Fellowship Contest due on or before this date. Send application and material to National Third Vice President (address above).
- May 15 —End of fiscal year. Treasurer's book must be examined and approved by Chapter President and Finance Committee.
- June 1 —PRESIDENT send annual report (statistical), also names and addresses of new officers, to National Executive Office on special report forms and blanks for officers' lists provided by that office.
TREASURER send annual financial report signed and approved by Chapter President and Finance Committee to National Executive Office on blanks provided by that office.

- NOTES: No. 1—Special order blanks in triplicate, accompanied by check, must be used for purchasing sorority insignia. All orders must be sent by Chapter Treasurer direct to the National Executive Office. Make checks payable to MU PHI EPSILON. *Use only the order blanks which are issued by JOSTEN'S, the official jewelers. Add 10% Federal jewelry tax to all jewelry payments.*
- No. 2—All matters of national and chapter policies shall be referred to the National President, Ava Comin Case, School of Music, University of Michigan, Ann Arbor, Mich.
- No. 3—The payment of 1943-44 Convention Savings Fund installments is optional this season because war conditions necessitate postponement of the 1944 National Convention. Chapters which wish to pay this year as usual and thus finish their obligation for the next Convention may do so; other chapters may defer their payments until the year before the next Convention. A very few chapters have not completed their 1942-43 payments to this Fund; such chapters may complete those payments during 1943-44.
- No. 4—Annual subscriptions to THE TRIANGLE expire with the October issue, hence the necessity for prompt renewals in order that they may be in effect for the December issue.

Official Directory

FOUNDERS

- PROFESSOR W. S. STERLING.....Cincinnati, Ohio
ELIZABETH MATHIAS.....Cincinnati, Ohio

HONORARY ADVISORY BOARD

- ELIZABETH MATHIAS FUQUA (MRS. JOHN W.), Island Grove Hospital, Greeley, Colo.Alpha
MYRTLE PALMER LEACH (MRS. F.), 26 Montrose Street, Malden, Mass.....Gamma
ELFRIDA LANGLOIS KENT (Deceased).....Delta
ALICE DAVIS BRADFORD PECK (MRS. ARTHUR), 40 Wilmuth Ave., Wyoming, OhioAlpha
ORA BETHUNE JOHNSON (MRS. J. F.), Darien, Mo.....Theta
MARY TOWSLEY PFAU (MRS. WM.), (Deceased).....Alpha
ROXILETTIE TAYLOR YEATES (MRS. JOHN), Cody, Wyo.....Theta
ANGELLA M. FOX (MRS.), (Deceased).....Iota Alpha
HARRIET THOMPSON WRIGHT (MRS. WM. E.), 482 Glenn Ave., Fresno, Calif.Chi
DORIS BENSON (MRS. WALTER), Spikeswood Farm, Woodruff, Wis.....Iota Alpha
PERSIS HEATON TRIMBLE (MRS. CHARLES M.), (Deceased).....Mu Alpha
LUCILLE EILERS BRETTSCHEIDER (MRS. AUGUST, JR.), 3426 Morrison Place, Clifton, Cincinnati, Ohio.....Alpha
ORAH ASHLEY LAMKE (MRS. GEORGE), 138 Linden Ave., Clayton, Mo.....Delta
DOROTHY ELIZABETH PATON, 1307 Iroquis Place, Ann Arbor, Mich.....Gamma
BERTHA MARRON KING (MRS. DANIEL P.), MacPhail School of Music, Minneapolis, Minn.....Mu Epsilon
ELIZABETH AYRES KIDD (MRS. A. E., JR.) New Trier High School, Winnetka, Ill.Mu Xi, Sigma

NATIONAL EXECUTIVE COMMITTEE 1942-44

- President—AVA COMIN CASE (MRS. LEE O.).....Gamma, Ann Arbor Alumnae School of Music, University of Michigan, Ann Arbor, Mich.
First Vice President—MARGARETTE WIBLE WALKER.....Mu Nu, Los Angeles Alumnae 5163 So. Normandie, Los Angeles, Calif.
Second Vice President—CHARLOTTE KLEIN.....Rho Beta, Washington Alumnae 3217 Wisconsin Ave. N.W., Washington 16, D. C.
Third Vice President—MABEL HENDERSON.....Theta 761 Belt Ave., St. Louis, Mo.
Editor—ETELKA EVANS.....Upsilon, Cincinnati Alumnae Cincinnati Conservatory of Music, Cincinnati, Ohio

NATIONAL LIBRARIAN

- ELIZABETH MATHIAS FUQUA (MRS. JOHN W.), Island Grove Hospital, Greeley, Colo.

NATIONAL EXECUTIVE OFFICE

- Executive Secretary-Treasurer*
BERTHA MARRON KING (MRS. DANIEL P.).....Mu Epsilon, Minneapolis Alumnae MacPhail School of Music, Minneapolis, Minn.

* * MU PHI EPSILON * NATIONAL DEPARTMENTS * *

EDITORIAL BOARD

Etelka Evans, National Editor.

Associate Editor—

Bertha Krehbiel, *Alpha, Cincinnati Alumnae*; 2565 Perkins Lane, Cincinnati, Ohio.

PUBLIC RELATIONS

Margaret Sherman, *Tau Alpha*, Chairman Eastern Division; 165 W. 3rd St., New York, N. Y.

Chairman Mid-western Division: Anna Burton De Graw, *Chicago Alumnae*; 11109 So. Hoyne Ave., Chicago, Ill.

Bernice Woodson Park (Mrs. Donald K.), *Los Angeles Alumnae*, Chairman Western Division; 1423 Warnall Ave., West Los Angeles, Calif.

Mary Louise Ackley, *Philadelphia Alumnae*; 11 So. State St., Vineland, N. J.

Ann Nisbet, *Mu Upsilon*; 922 So. Church St., Winston-Salem, N. C.

Estelle Gehlke Miller (Mrs. C. F.), *Cleveland Alumnae*; 2939 Berkshire Rd., Cleveland Heights, Ohio.

Helen Baer (Mrs. N.), *Epsilon*; 3509 Revere Dr., Toledo, Ohio.

Lavina Gauen, *St. Louis Alumnae*; 4012 Flora Pl., St. Louis, Mo.

Irma Ahola, *Phi Beta*; Three Arts Club, Chicago, Ill.

Ethel Hicks Lutz (Mrs. H.), *Kansas City Alumnae*; 1830 E. 48th Ter., Kansas City, Mo.

Susan Ellen Hamman, *Mu Chi*; 3712 Miramar, Dallas, Texas.

Catherine Flood, *Seattle Alumnae*; Seattle Daily Times, Seattle, Wash.

Marcella Thorp, *Mu Eta*; 321 E. Rose St., Stockton, Calif.

RADIO

Jewel Bethany Hughes (Mrs. Edwin), *Tau Alpha*, Chairman; 338 W. 89th St., New York, N. Y.

Geraldine Rhoades Traver (Mrs. C. R.), *Rochester Alumnae*; 315 Cobbs Hill Dr., Rochester, N. Y.

Betty Larkins, *Mu*; Oak Ridge, N. C.

Anna Burton DeGraw, *Chicago Alumnae*; 11109 So. Hoyne Ave., Chicago, Ill.

Betty Ann Ritzenhein, *Phi Kappa*; 448 Merrick, Detroit, Mich.

Leota Lowry (Mrs. Palmer D.), *Des Moines Alumnae*; 4514 Beaver Crest Dr., Des Moines, Iowa.

Marian Laut, *Kappa*; 5270 Pleasant Run Blvd., Indianapolis, Ind.

Fern Heiny, *Denver Alumnae*; 975 Washington, Denver, Colo.

Margaret Dietrich, *Mu Delta*; 910 W. 33rd Ter., Kansas City, Mo.

Marcelle Vernazza (Mrs. J. A.), *San Francisco Alumnae*; 344 11th Ave., San Francisco, Calif.

Bernice Stusser, *Tau*; 826 Gwynn Pl., Seattle, Wash.

ENDOWMENT FINANCE

Martha Seifried, *Mu Omicron*, Chairman; 3117 Portsmouth Ave., Cincinnati, Ohio.

Marguerite Patton (Mrs. H. S.), *Lansing-East Lansing Alumnae*; 926 University Dr., East Lansing, Mich.

Dorothea Kerr, *Meadville Alumnae*; 601 Chestnut St., Meadville, Pa.

Anna Lea Mayhew, *Phi Xi*; Uvalde, Texas.

Betsy Teel, *Mu Beta*; 511 Cottage Ave., Cashmere, Wash.

DEPARTMENT OF WARTIME ACTIVITIES

Dorothy Elizabeth Paton, *Ann Arbor Alumnae*, National Co-Ordinator; 1307 Iroquis Place, Ann Arbor, Mich.

Helen Fisk Torrey (Mrs. Wm.), *Washington Alumnae*, Atlantic Province Director; 3045 Davenport St. N. W., Washington, D. C.

Frances Huff Butler (Mrs. O. G.), *Mu Xi*, Great Lakes Province Director; 5403 Dorchester, Chicago, Ill.

Bertha Krehbiel, *Cincinnati Alumnae*, East Central Province Director; 2565 Perkins Lane, Cincinnati, Ohio.

Cleo Frost Furr (Mrs. D. T.), *Dallas Alumnae*, West Central Province Director; 4218 THROCKMORTON, Apt. 13, Dallas, Texas.

Genevieve Clancy Dundore (Mrs. John, Jr.), *Portland Alumnae*, Pacific Province Director; 1126 N. E. Imperial Ave., Portland, Ore.

MANUAL

Erma Louise Krupp Johnson (Mrs. James I.), *Chicago Alumnae*, Chairman; 833 15th St., Wilmette, Ill.

Elizabeth Ayres Kidd (Mrs. A. E., Jr.), *Past National President*, Adviser; New Trier High School, Winnetka, Ill.

Rachel Boothroyd, *Iota Alpha*; 2155 Pierce Ave., Chicago, Ill.

Jeannette Risler, *Mu Iota Delta*; 325 Cumberland, Park Ridge, Ill.

Frances Huff Butler, *Mu Xi*; 5403 Dorchester, Chicago, Ill.

Anna Burton DeGraw, *Chicago Alumnae*; 11109 So. Hoyne Ave., Chicago, Ill.

Marguerite Patton (Mrs. H. S.), *Lansing-East Lansing Alumnae*; 926 University Dr., East Lansing, Mich.

MU PHI EPSILON SCHOOL OF MUSIC AT GAD'S HILL CENTER

Director: Frances Huff Butler (Mrs. O. G.), *Mu Xi*; 5403 Dorchester, Chicago, Ill.

Treasurer: Alma E. Grambauer, *Mu Xi*; 1350 Henry St., Des Plaines, Ill.

Representative on Settlement Board of Gad's Hill: Marjorie M. Sherman (Mrs. H.), *Mu Xi*; 714 Washington Ave., Wilmette, Ill.

Active and Alumnae Chapter Roll

ATLANTIC PROVINCE

Province Governor—CHARLOTTE KLEIN, Mus.D., F.A.G.O., *National Second Vice President*; 3217 Wisconsin Ave. N. W., Washington 16, D. C.

Beta—New England Conservatory of Music.....Boston, Mass.
President—ROSE BONGIOVANNI, 27 Dickinson Rd., Brighton, Mass.

Mu—Brenau CollegeGainesville, Ga.
President—LOUISE HARWELL, Brenau College, Gainesville, Ga.

Psi—Bucknell UniversityLewisburg, Pa.
President—LOUISE LAUBE, Bucknell University, Lewisburg, Pa.

Mu Upsilon—Eastman School of Music, University of Rochester...Rochester, N. Y.
President—ADELE DRILL, Eastman School of Music, Rochester, N. Y.

Phi Gamma—Peabody Conservatory of Music.....Baltimore, Md.
President—HELEN HOWELL, 509 Park Ave., Baltimore, Md.

Tau Alpha—Trigonus.....New York, N. Y.
President—BEATRICE MACCUE, 5 Patsy Pl., Great Neck Village, Long Island, N. Y.

Atlanta Alumnae Chapter
President—DOROTHY HIATT, 66 Clay St. S. E., Atlanta, Ga.

Boston Alumnae Chapter
President—MILDRED C. BOWKER (Mrs. E. M.), 78 Harvard Ave., Brookline, Mass.

Meadville Alumnae Chapter
President—BONNIE INGLEFIELD (Mrs. P. D.), 733 Liberty St., Meadville, Pa.

Philadelphia Alumnae Chapter
President—DELPHINE DESIO, Aquilla Apts., 48th and Sansom St., Philadelphia 39, Pa.

Pittsburgh Alumnae Chapter
President—MARGARET CALVERT LANE (Mrs. E. H.), 307 King's Highway, Rosslyn Farms, Carnegie, Pa.

Rochester Alumnae Chapter
President—MILDRED A. RANDALL, Eastman School of Music, Rochester, N. Y.

Washington Alumnae Chapter
President—QUINTA FREY, 4236 47th St. N. W., Washington, D. C.

GREAT LAKES PROVINCE

Province Governor—AVA COMIN CASE (Mrs. LEE O.), *National President*; School of Music, University of Michigan, Ann Arbor, Mich.

Gamma—University of MichiganAnn Arbor, Mich.
President—JEAN WESTERMAN, 333 So. Division, Ann Arbor, Mich.

Epsilon—Toledo Conservatory of Music.....Toledo, Ohio
President—HELEN BAER, 3509 Revere Dr., Toledo, Ohio.

Iota Alpha—Chicago Musical College.....Chicago, Ill.
President—HELEN PRUNKARD, 64 E. Van Buren St., Chicago, Ill.

Sigma—Northwestern UniversityEvanston, Ill.
President—JEAN HOLCOMB, Northwestern University School of Music, Evanston, Ill.

- Mu Xi**—American Conservatory of MusicChicago, Ill.
President—MARJORIE HUNTER SCHNEEFUS, 711 Rush St., Chicago, Ill.
- Mu Pi**—Ohio Wesleyan UniversityDelaware, Ohio
President—RUTH E. SCHIEBER, Austin Hall, Delaware, Ohio.
- Mu Phi**—Baldwin-Wallace CollegeBerea, Ohio
President—MARGARET ROSE, Baldwin-Wallace College, Berea, Ohio.
- Phi Kappa**—Wayne UniversityDetroit, Mich.
President—HELEN GRANNIS, 17167 Edinborough Rd., Detroit, Mich.
- Phi Omicron**—Western Reserve University.....Cleveland, Ohio
President—HELEN LEINO, 4106 Clinton Ave., Cleveland, Ohio.
- Ann Arbor Alumna Chapter**
President—LOUISE CUYLER, 1305 E. Stadium Blvd., Ann Arbor, Mich.
- Chicago Alumna Chapter**
President—MARIE HOOVER ELLIS, 321 Lake St., Evanston, Ill.
- Cleveland Alumna Chapter**
President—MARJORIE F. LENTZ (MRS. D. W.), 2736 Division Ave., Apt. 422, Cleveland, Ohio.
- Detroit Alumna Chapter**
President—MARJORIE DEYO (MRS. W. B.), 1442 Boston Blvd. W., Detroit, Mich.
- Lansing-East Lansing Alumna Chapter**
President—
- Toledo Alumna Chapter**
President—GEORGIA G. BLAIR (MRS. R. R.), 2055 Robinwood Ave., Toledo, Ohio.

EAST CENTRAL PROVINCE

Province Governor—ETELKA EVANS, *National Editor*, Conservatory of Music, Cincinnati, Ohio

- Zeta**—De Pau University.....Greencastle, Ind.
President—EVELYN CRUMP, 1025 So. Indiana St., Greencastle, Ind.
- Theta**—Kroeger School of MusicSt. Louis, Mo.
President—FERN O. KELLY, 7442 Canton, University City, Mo.
- Kappa**—Arthur Jordan School of Music.....Indianapolis, Ind.
President—MARI WAGNER, 5235 Graceland Ave., Indianapolis, Ind.
- Upsilon**—Cincinnati Conservatory of Music.....Cincinnati, Ohio
President—ELOISE WOLF, 3131 Fairfield, Cincinnati, Ohio.
- Omega**—Drake UniversityDes Moines, Iowa
President—JANE MAUCK, Fine Arts College, Drake University, Des Moines, Iowa.
- Mu Alpha**—Simpson College.....Indianola, Iowa
President—LOLA McLAUGHLIN, Simpson College, Indianola, Iowa.
- Mu Epsilon**—MacPhail College of Music.....Minneapolis, Minn.
President—JEAN NYLIN OLSSON, 3942 Vincent Ave. No., Minneapolis, Minn.
- Mu Omicron**—College of Music.....Cincinnati, Ohio
President—DORIS WULF, 2527 Moorman Ave., Cincinnati, Ohio.
- Mu Psi**—Coe College.....Cedar Rapids, Iowa
President—RUTH BURESCH, 1724 2nd Ave. S. E., Cedar Rapids, Iowa.
- Phi Beta**—University of Minnesota.....Minneapolis, Minn.
President—JANET BRANDT, University of Minnesota, Minneapolis, Minn.
- Phi Theta**—Lindenwood College.....St. Charles, Mo.
President—MARTHA ANN ENGLAND, Lindenwood College, St. Charles, Mo.
- Cincinnati Alumna Chapter**
President—HELEN EILERS (MRS. WM.), 7623 Montgomery Rd., Cincinnati, Ohio.
- Des Moines Alumna Chapter**
President—MRS ROY L. CLARK, 1616 46th St., Des Moines, Iowa.
- Indianapolis Alumna Chapter**
President—CHARLETTIE LIEBER, 3444 N. Pennsylvania St., Apt. 13, Indianapolis, Ind.
- Minneapolis Alumna Chapter**
President—HELEN MUELLER, 2709 Blaisdell Ave., Minneapolis, Minn.
- St. Louis Alumna Chapter**
President—HELEN BARCOCK (MRS. O. E.), 335 No. Central Ave., Clayton, Mo.
- St. Paul Alumna Chapter**
President—CHARLOTTE McCALLUM (MRS. J. T.), 161 Amherst Ave., St. Paul, Minn.

WEST CENTRAL PROVINCE

Province Governor—MABEL HENDERSON, *National Third Vice President*, 761 Belt Ave., St. Louis, Mo.

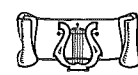
- Xi**—University of Kansas.....Lawrence, Kans.
President—JUSTINE PETERSON, University of Kansas, Lawrence, Kans.
- Mu Gamma**—University of Nebraska.....Lincoln, Nebr.
President—SHIRLEY L. SMITH, University of Nebraska, Lincoln, Nebr.
- Mu Delta**—Kansas City Conservatory of Music.....Kansas City, Mo.
President—DELLAH V. BORDERS, 1208 Huntington Rd., Kansas City, Mo.

- Mu Theta Epsilon**—University of Texas.....Austin, Texas
President—DORIS JEAN TAYLOR, 911 W. 22½ St., Austin, Texas.
- Mu Kappa**—University of Oklahoma.....Norman, Okla.
President—JUANITA RICE, 508 E. Macy, Norman, Okla.
- Mu Mu**—Kansas State College.....Manhattan, Kans.
President—LORRAINE JOHNSON, 1030 Thurston St., Manhattan, Kans.
- Mu Tau**—University of South Dakota.....Vermilion, So. Dak.
President—SELMA GRAVROK, 202 Linden Ave., Vermilion, So. Dak.
- Mu Chi**—Southern Methodist University.....Dallas, Texas
President—JANE E. SYKES, 3219 Southwestern, Dallas, Texas.
- Phi Epsilon**—College of Emporia.....Emporia, Kans.
President—MARTHA ANNE WAGER, 1223 West St., Emporia, Kans.
- Phi Zeta**—Morningside CollegeSioux City, Iowa
President—LOIS ROORDA, 1504 Morningside Ave., Sioux City, Iowa.
- Phi Iota**—Concordia CollegeMoorhead, Minn.
President—VIOLA ANDERSON (MRS. H. O.), 1038 1st St. No., Fargo, No. Dak.
- Phi Xi**—Baylor University.....Waco, Texas
President—MARY JO BOYKIN, Memorial Dormitory, Waco, Texas.
- Phi Pi**—University of Wichita.....Wichita, Kans.
President—ARDEEN BURKETT, 114 No. Pinecrest, Wichita, Kans.
- Dallas Alumna Chapter**
President—VALERIE FOSCUE (MRS. A. W.), 3300 Milton, Dallas, Texas.
- Denver Alumna Chapter**
President—HENRIETTA SHELDON, 3427 Harrison, Denver, Colo.
- Kansas City Alumna Chapter**
President—MARGARET F. FISHER (MRS. J. M.), 6318 Wornall Rd., Kansas City, Mo.
- Lincoln Alumna Chapter**
President—BETH KING (MRS. F. R.), 2825 Manse, Lincoln, Nebr.

PACIFIC PROVINCE

Province Governor—MARGARETTE WIBLE WALKER, *National First Vice President*, 5163 So. Normandie, Los Angeles, Calif.

- Nu**—University of Oregon.....Eugene, Ore.
President—GENEVIEVE GRAVES, 1670 Alder St., Eugene, Ore.
- Tau**—University of Washington.....Seattle, Wash.
President—MILDRED TOWNSEND, 5753 30th N. E., Seattle, Wash.
- Mu Beta**—Washington State CollegePullman, Wash.
President—EUNICE WOLTERS, Washington State College, Pullman, Wash.
- Mu Zeta**—Whitman College.....Walla Walla, Wash.
President—JOYCE MCKAY, Prentiss Hall, Walla Walla, Wash.
- Mu Eta**—College of the Pacific.....Stockton, Calif.
President—BETTY HERRICK, Manor Hall, C.O.P., Stockton, Calif.
- Mu Nu**—University of Southern California.....Los Angeles, Calif.
President—THYRA SNYDER, 601 So. Poinsetta Ave., Compton, Calif.
- Phi Lambda**—Willamette University.....Salem, Ore.
President—MARY MARGARET LIVESAY, 440 Division, Salem, Ore.
- Phi Mu**—San Jose State CollegeSan Jose, Calif.
President—MARGARET AIRTH, 25 So. 5th St., San Jose, Calif.
- Phi Nu**—University of California at Los Angeles.....Los Angeles, Calif.
President—EDITH ELLERSIECK, 1415 Victoria Ave., Los Angeles, Calif.
- Los Angeles Alumna Chapter**
President—LOUISE PELZEL (MRS. JOHN), 311 So. Reeves Dr., Beverley Hills, Calif.
- Portland Alumna Chapter**
President—LILLIAN PETTIBONE, 319 S. W. Oak St., Portland, Ore.
- San Francisco Alumna Chapter**
President—JUNE SANDERS, 583 Salvaterra St., Stanford University, Calif.
- Seattle Alumna Chapter**
President—EILENE RISEGARI (MRS. S.), 133 16th No., Seattle, Wash.



ACTIVE AND ALUMNAE CHAPTERS' EQUIPMENT AND SUPPLIES

Active and Alumnae Chapters will please order all equipment and supplies from the National Executive Office, MacPhail School of Music, Minneapolis, Minn. Make checks payable to MU PHI EPSILON, and accompany each order with your check.

Song Books	\$1.00	Treasurer's Membership	
Formal Invitations15	Sheets, 25 for35
Demit Cards15	Correspondence Folders	
Triangle Songs25	with Crest, each05
Examination Paper, sheet	.03	Card Index File	1.50
Examination Envelope05	Pattern for Robe45
Treasurer's Receipt sheets		Pattern for Stole15
25 for35	Altar Cloth, communicate	
Treasurer's Disbursement		with Executive Office	
Sheets, 25 for35	Mu Phi Epsilon Shield ...	3.50
		Triangle75

No charge for Constitutions, Secret Ceremonies, Affiliation Cards, Perforated File Cards.

Please purchase the following articles from your local dealers:
 Secretary's Sheets.....Cards for File.....Box Letter File.....
 Secretary's and Treasurer's books (regulation leather covers) for replacement of old books.

The Mu Phi Epsilon Shield, which, according to the revised Secret Ceremonies is a part of the equipment for initiation, is now obtainable at the National Executive Office.

Change of Name and Address

Must be sent not later than the first day of month of issue of Triangle to the NATIONAL EXECUTIVE OFFICE, MacPhail School of Music, Minneapolis, Minn.

Post Office will not forward copies unless extra postage is sent. Duplicate copies cannot be issued to those who fail to send notice of their change of name or address.

USE THIS FORM

Chapter..... Date of Initiation.....

Former Address:

Name

Street and Number.....

City and State.....

New Address:

Name

Street and Number.....

City and State.....



Sole Official Jewelers to Mu Phi Epsilon

Owatonna, Minn.

MU PHI EPSILON BADGE

Raised Lyre

Plain Beveled Border.....\$ 7.00 ...
 Whole Pearls

Flat Lyre

Plain Border

White Gold Extra (Note Extra Charges)

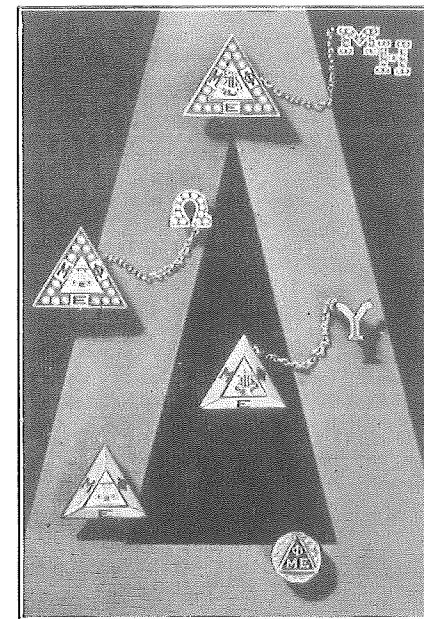
18K Plain Badges.....\$ 3.00 ...
 18K Jeweled Badges..... 4.00 ...
 18K White Gold Guard
 Pins

GUARD PINS

Coat of Arms.....\$ 2.75 ...
 Large Size One Letter Two Letters
 Plain

PATRONESS PINS

Plain Nugget Back.....\$ 4.50 ...
 Half Pearls, close set... 8.50 ...
 Whole Pearls, crown set.. 13.25 ...



Mu Phi Epsilon Medal ★ Diamond Set Pins
 Communicate with the Executive Office

Please add 10% Federal Tax to all payments for jewelry

Please mail your jewelry orders with check to
 Mu Phi Epsilon National Executive Office,
 MACPHAIL SCHOOL OF MUSIC, Minneapolis, Minn.

JOSTEN'S

Sole Official Jewelers

General Offices and Main Plant
 Owatonna, Minnesota

Sales Service Offices in
 Principal Cities