

Vol. 41 #3

The Triangle



OF MU PHI EPSILON

May, 1947

Vacation Days

*Sing me a song of the out-of-doors,
Of the mountains, field and sea,
Where the skies are clear and the breezes cheer,
And the heart of man is free.*

*I am overspent by the ceaseless din
Of the subway and the street,
For the crowds distress and the walls oppress
With their sultry gathered heat.*

*Give me a glimpse of the meadows green,
Give me space where I can see;
I will roam at will and enjoy the thrill
Of Creation's ecstasy.*

*Let me dream awhile as I hear the song
Of the robin, thrush and wren,
I shall find release in an inward peace,
And return—refreshed—again.*

From "Highways to Happiness" by Alfred Grant Walton. Reprinted
by permission of Harper & Brothers, Publishers.

The Triangle

Of Mu Phi Epsilon

VOLUME 41



NUMBER 3

In This May, 1947, Issue

Vacation Days.....	Cover	11
Ava Comin Case: <i>National President</i>		2
Opportunity Knocks Twice: <i>Helen C. Dill</i>		3
Introducing Our New MΦE National Chairmen.....		4
Memories: <i>Hilda Butler Farr</i>		6
They Chose Mu Phi: <i>Midwinter Installations</i>		7
Music For Victory: <i>Laura Helen Coupland</i>		11
About Laura Helen Coupland.....		13
The Poet's Page.....		14
Omega's String Quartet.....		15
In Memoriam: <i>Marjorie Evans</i>		16
The Pride of Mu Phi.....		17
Information If You Please.....		20
Meeting the Challenge of the Physically Handicapped: <i>Bernice Paula Jackson</i>		23
Family Relations in Mu Phi Epsilon.....		24
In the News.....		29-35
Historians Reporting		36
Mu Phi Epsilon Directory.....		59-64
The Mu Phi Epsilon Creed.....	Cover	IV

Mildred M. Christian, Editor

THE TRIANGLE of Mu Phi Epsilon is published four times yearly, the first of November, January, March and May, at 2642 University Ave., Saint Paul, Minnesota, by Leland Publishers, Incorporated (The Fraternity Press) for Mu Phi Epsilon, National Music Sorority. The subscription price is \$1.00 per year. Deadlines for copy: Materials for publication must reach the Editor, 1568 Lauderdale Ave., Lakewood 7, Ohio, before the tenth of September, January, March and the fifteenth of November. Entered as second class matter at the postoffice at Saint Paul, Minnesota, under the act of March 5, 1879.



Ava Comin Case
National President

OPPORTUNITY KNOCKS TWICE



BY HELEN C. DILL

*Phi Nu and Beverly Hills Alumnae Chapter
Reëlected Chairman, National Scholarship Awards*

△ CONTRARY to the old phrase that opportunity knocks but once, Mu Phi Epsilon presents every active chapter throughout the country with a second opportunity to participate in the yearly Scholarship Awards Contest.

It was in the spring of 1946 that the pattern for the Scholarship Awards was set up. Your chairman awaited returns most eagerly. Out of fifty-six active chapters in our sorority at that time, twenty-one entered candidates for the Scholarship Cash Prize of \$50 and the two Honorable Mentions. It was my duty, as outlined by National Council, to select five girls whose records appeared most outstanding. This list with the data regarding them was forwarded to President Ava who, with the Council mem-

bers, voted on the winners. For 1946 the winners were: Cash Prize, Virginia Dale, Phi Iota Chapter, Concordia College, Moorhead, Minnesota; Honorable Mention, Maxine Cady Barnes, Nu Chapter, University of Oregon, Eugene, Oregon; Lucile Harley, Mu Phi Chapter, Baldwin-Wallace College, Berea, Ohio.

Each chapter had been asked to choose a Senior member whose activities were outstanding considered from the following viewpoints: (1) her scholarship average for the four years up to her final half year; (2) her professional activities; (3) her Mu Phi Epsilon activities (offices held, etc.) and (4) her campus activities. The article about Virginia Dale in the November, 1946, TRIANGLE, will surely impress you with

(CONTINUED ON PAGE 13)



Grayce Clark

NATIONAL CHAIRMAN
MAGAZINE AGENCY

GRAYCE KENT CLARK
Des Moines Alumnae

△ "WITH the fourth year of our MAGAZINE AGENCY well under way we can point with pride to the development of a business nurtured during lean years of the war by the inspiring guidance of Martha Seifried, Mu Omicron, our first National Chairman of the Magazine Agency," reports Grayce Kent Clark, who succeeded Martha Seifried as national chairman.

We are happy to extend our deepest appreciation to Martha for the many hours she spent, not only in organizing the agency but in developing it into a growing concern for the worthwhile purpose of helping maintain the Mu Phi Epsilon School of Music at Gad's Hill Center, thus opening opportunities to the many students who study there each year.

In late February, seventy-five

chapters were participating in helping Mu Phi Epsilon support this national altruistic project. This is an increase of twenty-nine chapters during the past year. It is our sincere hope that the few remaining chapters will give us their support in the near future.

Our goal for this year is \$6,000 in magazine sales. This is twice the amount of our actual sales last year. At the time this is written, there is every indication that we are well on the way toward our goal. However, in order to achieve our objective, it is necessary that *every member subscribe for at least one magazine each year.*

As part of the sound planning by Martha, we now have five province



chairmen to handle the sales in each province. The chapter chairmen send their orders to their respective province chairmen. They in turn send the orders immediately to the magazine agency in New York City. The five province chairmen send monthly reports to the national chairman, who keeps a record of all subscriptions and handles all finances. Grateful thanks is expressed to her Mu Phi sisters for their splendid coöperation and loyal support.

Members are urged to contact their chapter chairman to place sub-

scriptions. There are approximately 3,000 magazines to choose from. Subscriptions may be personal, gifts to someone, or renewals. Renewals particularly should make it easy to carry on our slogan, "*A minimum of one subscription for each member each year.*"

At the end of the year, June 1, there will be a cash award of \$25 to the chapter whose membership turns in the most subscriptions. All chapters are especially urged to make plans to obtain a steady flow of new and renewal subscriptions during the summer months. Let us make those summer months profitable. This will get us off to a flying start at the beginning of the next school year.



NATIONAL CHAIRMAN
MUSIC IN HOSPITALS

VIOLA M. ANDERSON, *Phi Iota*

△ A MUSIC IN HOSPITALS program was instituted in 1944 by the National Federation of Music Clubs and was adopted by our sorority in 1945 when National Council appointed Hildur Shaw (Phi Iota) National Chairman for Mu Phi Epsilon. Under her able direction we made a fine beginning and as you recall from her report given at Convention last summer, nearly \$900

was contributed to assist the National Federation of Music Clubs in this work. Truly, this is a reflection of hard work on the part of all chapters of Mu Phi and more especially on Hildur as chairman of the project. We all offer her a big vote of thanks in appreciation of her efforts.

The object of MUSIC IN HOSPITALS program is to assist in building up the morale and uplifting the spirits of the sick and wounded in Veterans, Military and Naval Hospitals. Our contributions help purchase musical instruments, such as pianos, radios, auto harps, phonographs, records, music, etc.; assist in giving scholarships for veterans refresher courses; and in carrying out work among hospitalized veterans. Part of our contributions go into the Anne Gannett Foundation and will be used exclusively in work among the disabled veterans.

There is a need for especially trained teachers and workers who are willing to give free musical in-

Viola Anderson



struction to men in veterans' hospitals as well as individuals or performing groups who will participate in hospital recreation programs. I hope many of you have been taking part in presenting programs in hospitals—be they civilian or veteran. Later a questionnaire will be sent you regarding your activities along this line, so that a report on it can be given at the National Federation of Music Clubs Convention this spring. We are eager to have Mu Phi participate in a large measure so that we may submit a creditable

record. Do try to direct some of your efforts into this phase of the work.

Reports have been coming to me consistently from NEO on your contributions. We are hopeful that we shall soon have 100% coöperation. It is truly gratifying to head up a committee when one has such fine backing from the members. Thank you one and all for your loyal support of this very worthy cause. (See pp. 21-22 for list of chapters and clubs who have thus far supported MUSIC IN HOSPITALS project.)

Memories

*It only seems a little while
Since both of them were small
It's hard to recognize them now
For they have grown so tall.*

*Sometimes I cannot yet believe
Those childish years are done
When rooms were filled with toys and dolls—
Hilarity and fun.*

*Those busy years—how sweet they were—
I wonder where they went?
Until they're gone one never knows
How much they really meant.*

*Today I'm proud of both of them
And so I shouldn't fret—
But baby pranks—and teddy bears—
These things I can't forget.*

HILDA BUTLER FARR.

Chicago Alumnae Chapter

They

CHOSE MU PHI

☆ EPSILON GAMMA
☆ BEVERLY HILLS ALUMNAE
☆ WICHITA ALUMNAE

Welcome

Installations—Midwinter, 1947

EPSILON GAMMA CHAPTER Belhaven College

BY HELEN TRAVIS AVERY

△ ON the week end of February 21, 22, 1947, Mu Phi Epsilon installed Epsilon Gamma Chapter at Belhaven College, a Presbyterian Girls' College, in Jackson, Mississippi. Ava Comin Case, our beloved National President, ably assisted by our own Mabel Henderson, former Council Member, had charge of the installation.

The events of the week end began Friday with a Morning Coffee at the home of Dr. and Mrs. G. T. Gillespie, our College President, and his charming wife. After the lunch hour the girls were formally pledged;

the pledge ceremony was followed by a lecture and examination.

Initiation was held Saturday afternoon at three o'clock in the B.C.A. parlor at Belhaven followed immediately by chapter installation, then installation of officers. Eighteen charming girls became the first initiates of Epsilon Gamma Chapter.

Mu Phi Epsilon members who assisted with the installation besides Miss Mabel Henderson were: Mrs. Wyman Sanders and Mrs. Harold V. Avery of Jackson, and Miss Elise Cambon of New Orleans, Louisiana. We deeply appreciated their assistance.

Immediately following the ceremony, a formal recital was presented by five members of Epsilon Gamma Chapter in Cunningham Chapel at Belhaven. The crowning climax was the last number on the program,

Beethoven's Appassionata Sonata by Ava Comin Case. She left us all awed at the beauty and precision of her playing.

At seven o'clock, Saturday evening, we ended our gala week end with a beautiful banquet at the Heidelberg Hotel. The table decorations were carried out in our purple and white colors. It was attended by the active chapter, the installing Mu Phis and guests, President and Mrs. G. T. Gillespie, Dean Purnell Wilson, Mr. Harold V. Avery, Mrs. J. T. Caldwell, teacher of singing and Mrs. T. A. Middleton, teacher of piano. In concluding the banquet, Mrs. Case installed Mrs. Caldwell and Mrs. Middleton as patronesses and Mr. Avery as patron of our new chapter.

To say we still have our heads in the clouds is speaking the truth, for the installation of Epsilon Gam-

ma Chapter is the culmination of a dream and hope we have had for a long time. Speaking as an old-time Mu Phi, I am confident you sisters would be very proud of our baby chapter, and they are so proud of "you-all!" We feel honored that Epsilon Gamma Chapter is the first in the state of Mississippi and we are eager to uphold the fine and sincere principles of Mu Phi Epsilon.

BEVERLY HILLS ALUMNAE CHAPTER Beverly Hills, California

BY EVAMARIA MORITZ LANNING

△ TOWARD the end of 1946, Mu Phi's in and around Los Angeles were excitedly talking about the new alumnae chapter soon to be formed. For weeks discussions had been held



Epsilon Gamma Chapter, Belhaven College, Jackson, Mississippi—(Front row, seated, left to right) Margaret Williams, Jimmie Doss, Dorris Matthews; (Second row, seated) Edwina May, Margaret Eleanor Brown, Mary Anne Martin, Mrs. Wyman Sanders, Miss Elise Cambon, Mrs. Ava Comin Case, Miss Mabel Henderson, Mrs. Harold Avery, Eva Gene Kersh, Rosa Wyse Foyde, Mary Taylor Sandefur; (Third row, standing) Cynthia Knight, Janie Gill, Dol Fenton, Mary Bailey, June Bedinger, Elaine Jenkins, Mattie Ellis, Evelyn Roland.



Beverly Hills Alumnae Chapter, Beverly Hills, California

concerning the need for an evening group for professional and other members who were unable to meet during the day. So, with the organization plans and year's program settled, the Beverly Hills Alumnae Chapter was officially and proudly installed on December 8, 1946, with twenty-four charter members.

The ceremony took place at the home of charter member Wilhelmina Lindquist, in the candlelit living room. The afternoon began with a musical program given by Marguerite Bitter, pianist; Mary Piastro, violinist, and Eloise Smith, soprano. The installation ceremony of the chapter and officers was conducted by Margaret Wible Walker, National First Vice President, with Ethel Gabrielle, president of the Los Angeles Alumnae Chapter assisting. The officers installed were: Carolyn Coe, president; Helen Colwell, vice president; Eloise Smith,

recording secretary; Esther Funk, corresponding secretary; Marian Kalstrom, treasurer; Ethel Croft, warden; Wilhelmina Rutherford, chaplain, and Ruth Plough, chorister. Congratulatory messages from the National Officers were read, and others were received from over twenty alumnae chapters throughout the country, making the new chapter feel very welcome.

With the impressive installation a warm memory now, the Beverly Hills Alumnae Chapter has already embarked upon a vigorous program. The second meeting was held jointly with the Los Angeles Alumnae Chapter. Activity has begun on a magazine project aimed to raise money for the Chicago Gads Hill Music Department. And with seven or eight new girls desiring to affiliate, the new chapter is off to a flying start, and is looking forward

eagerly to the activities of a promising year.

The twenty-four charter members are: Marguerite Bitter, La Verle Caliguirri, Carolyn Coe, Helen Colwell, Ethel Croft, Grace Davenport, Helen Dill, Vera Eubank, Elfleda Fisher, Esther Funk, Ruthella Gibbons, Beryl Hatch, Marion Johnston, Marian Kalstrom, Wilhelmina Lindquist, Ruth Anne McKean, Ruth Plough, Mary Piastro, Wilhelmina Rutherford, June Sams, Jean Saundusky, Hazel Sherwin, Eloise Smith, Edith Wells.

WICHITA ALUMNAE CHAPTER Wichita, Kansas

BY MARGUERITE DUPREE HOPKINS

△ SUNDAY AFTERNOON, December 29, 1946, will long be remembered by a happy group of Mu Phis in

Wichita, Kansas. On that afternoon, at the home of Mrs. Ralph Eby, the Wichita Alumnae Chapter was formally installed with Miss Matilda Guame, formerly of that city, as installing officer.

A lovely tea followed the installation ceremony with purple and white sorority colors reflected throughout the appointments. The serving table was centered with an arrangement of purple, white and yellow asters and was lighted with white tapers. Miss Lois Gordon was in charge of arrangements.

Members and patronesses of the Phi Pi Chapter of Wichita University were invited guests.

Officers installed at a short business meeting following the tea were: Marguerite Campbell Elliott, president; Mary Eby Bickford, secretary; Ardeen Burkett, treasurer; and Marguerite DuPree Hopkins, historian. (See chapter letter in HISTORIANS REPORTING section.)

Wichita Alumnae Chapter, Wichita, Kansas. Left to right, front row: Wanda Anderson, Margaret Claire Motter, Thelma Siebel, Mary Eby Bickford, Matilda Guame, installing officer; Ardeen Burkett, Margaret Campbell Elliott, Lois Ayres Gordon, and Catherine Colver Johnson. Second row: Marguerite DuPree Hopkins, Joan Edgar Buller, Beatrice Sanford Pease, Ruth Frank, Madge Marshall, Carol Showalter Holman and Mrs. Thurlow Lieurance.



BY LAURA HELEN COUPLAND

△ THERE is a new thing under the sun, a good thing brought by war to the ancient, conservative country of China. It began with a young man named Nieh-Erh, truly a musical genius, a hero who paid with his life for his patriot dream. He was born in the southernmost province called Yunnan and, even as a lad, earned his own living by playing the fiddle for a traveling band of actors. Always he dreamed of making songs that the road builder and the burden-bearer would sing to ease the pain of living. He made his way to Shanghai, where the first Chinese motion pictures were being produced. Working as a clerk in a store by day, he spent his evenings writing music and leading groups of

men, friends or strangers, anyone who would come in, singing together. Now, never before in the 4,000-year history of China had men sung together except the antiphonal chants of road-workers to time their strength to rhythm. There were solos, love songs from the theaters for the most part, but nothing like chorus singing.

Then came 1931 and Japan's invasion of Manchuria. Thoughtful young men saw the inevitable march of the aggressor into their own country; it was a time for men to work together; a time for courage; for singing songs of courage and resistance. Nieh-Erh got his great chance: he was to compose music for a movie called, "The Children

of the Storm." It's theme song began with these stirring words:

"Arise, Ye who refuse to be bond-slaves!

*With our very flesh and blood,
Let us build a new Great Wall!"*

It struck a chord from the hearts of all the people. A record was made; overnight the whole nation was singing. It became the official song for little groups of guerrillas, many of them college students who had slipped away from their classes to strike a blow for their country.

But the teachers and graduates of music schools laughed. The music, they said, was amateurish; trashy. Nieh-Erh was deeply hurt. He must study; must learn how to bring his dream of uniting Western and Chinese music into one integrated whole. America? That is what he wanted, but it was too far, too expensive for his slender means. Japan lay nearer; Japan had good schools; Japan was welcoming Chinese students. (Many went there and came back to use their knowledge against their enemy.) In the summer of 1934, a year after the composition of "Chee-lai," at the age of 23 he went to Japan to study. One month later his body was found floating in the ocean. Drowning, the Japanese said; but his friends who saw the corpse say it was still bleeding from eyes, ears and mouth. He was known as a hot-hearted patriot and he had met the fate of a patriot in an enemy land.

His friend, Liu Liang-Mo, a Y.M.C.A. Secretary in Shanghai, caught the torch. Later, he told an interviewer that he "felt a sense of mission to continue Nieh-Erh's ef-

forts." Beginning with sixty under-privileged youths—clerks, apprentices, office boys and elevator operators who were so burdened with the hardness of their lives that they never smiled—he taught them to sing, beginning with "Chee-lai." The next week the group was not sixty but a hundred and sixty. The movement was taken up in Peking where, the summer of 1935, Lee Pao-ch'en, who made the fine accompaniment and English translation of Chee-lai, organized a city-wide chorus of school boys and girls in a concert given, appropriately enough, in front of the Palace of Supreme Harmony in the old Forbidden City of the Chinese emperors. Four thousand people attended the concert.

The next year, the Japanese came to Peking. Their first bombing targets everywhere were the schools and colleges. Students and teachers, with the books they could carry in their hands, started walking west. With them went the songs of courage and resistance and a pledge that each one, whenever he learned a new song, would teach it to others. The government sent groups of students under the leadership of Lee Pao-ch'en and others to give concerts for the soldiers and teach them to sing together. Training for leaders of group singing was given by the National Military Council. Many songs were taught, including the National Anthem, San Min Chu I, but still the most popular was "Chee-lai":

"Arise, ye who refuse to be bond-slaves,

With our very flesh and blood

Let us build a new Great Wall!"

About Laura Helen Coupland

LAURA HELEN COUPLAND was born in Texas, and graduated in 1919 from Columbia School of Music in Chicago. After a year of private teaching in Longview, Texas, she went to Canton, China, to teach music in Pooi To Girls' Middle School. Laura lived in Canton from 1920 to 1925, and they were troublous times. In fact there was constant fighting in that vicinity the entire five years. She became ill and was sent home on short notice, packing trunks at noon and taking the five o'clock boat to Hong Kong. Later her companion in the school had to be rescued by an American gun boat, whereas Laura's father had the state department cabling about her safety.

Coming back to the States, she worked for a Master's degree in composition at Columbia, joining

the faculty at that school in 1927. At present she has a studio in the north suburb of Chicago. Writing is her hobby. She has sold two piano pieces, which the publishers have found very successful. Two other easy compositions are about ready to reach the market, published by Clayton F. Summy Company.

She has had several articles published in the "Etude" and "Children's Activities," and is at present working on three books for children to be published this year.

Laura would appreciate any used music for church, piano or voice or combination of voices for Chinese music students, as she is still in contact with a former pupil living in Kunming. Her address is 799 Elm St., Winnetka, Illinois.

Opportunity Knocks Twice

(CONTINUED FROM PAGE 3)

the caliber of girls whose records were submitted. Not one, but a dozen impressive records!

There are some difficulties, however, in selecting a "best" candidate from among the entrants. Campuses differ. Some are extensive and have very large enrollments; some are small in area and number of students; while others are located in city buildings with no campus at all. Again the curricula vary greatly, from the conservatory type giving mostly applied music with little or no courses in general subjects such as language, science, and history, to the university type course where perhaps only half of the units may be in music and

the remainder being courses in general subjects. To justly equate the candidates from their reports makes one wish for the wisdom of Solomon.

Our hope is that EVERY active chapter will honor some splendid girl this spring. To the victor goes not a perishing crown of laurel, but the sum of fifty dollars as tangible appreciation of her merit.

SINCERE APPRECIATION

FOR your many messages of encouragement; for filling the mail box with wonderful news of our great Sisterhood; and for your promptness in meeting requests and deadlines. I do thank you—
MILDRED M. CHRISTIAN, EDITOR.

The POET'S PAGE

LOVE WALKS TODAY

"Love's own sweet loveliness walks today!"
This song came forth from the bell of a flower,
That, growing beneath the poplars gray,
Cried aloud from its woodland bower.

"Wake up," it called, "Rejoice" and "Sing."
"For all the world is gay.
The sun, our own majestic king
Up over the clouds his court holds sway."

"The eagle has spread his giant wings,
Long hours ago he took his flight,
And over the farthest hilltop rings
The blackbird's carol of pure delight."

"All the daffodils marched at dawn,
I saw them in stately array;
While many a startled, spotted fawn
Leapt to their call of, 'Up and away!'"

"Hunters have ridden swiftly by,
A farm hand trudged off to his field.
While here to her lad, a lassie shy
The sweetness of one breathless kiss did yield."

"Ah, love's own sweet loveliness is here,
And always so 'twill be.
Come snow, come hail, come doubt or fear,
Love reigns supreme—God's love for thee!"

BERNICE SPRATLER
Phi Gamma

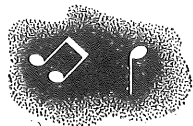
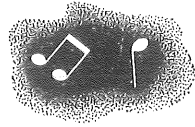
CONCERTO

Long, fluid waves of tone
Roll over me, through me,
Mounting, sweeping, warm,
As I lie, involved within myself.

I was cold, disfigured in mind,
Given over to complexity, littleness.
The dissatisfaction of the age, the
Madness of the world, was mine.

Lush, glorious patterns of warmth
Touched me; notes and harmonies
Became bright challenges of strength.
I rose and walked, singing.

JEAN UNNEWEHR SMITH
Mu Phi Chapter



Left to right: Margaret Davis, Sally (Sarah Jane) Needham, Lois Fish and Marlys Read Cook.

Omega's STRING QUARTET

DRAKE UNIVERSITY,
Des Moines, Iowa

Personnel:

Margaret Davis, first violinist, is also concertmaster of Drake-Des Moines Symphony Orchestra; member of the staff orchestra of radio station WHO; on the faculty of preparatory violin department, Drake University, two years; has appeared as soloist with Drake-Des Moines Symphony, St. Benedict College Symphony, Atchison, Kansas, and De Rubertis Orchestra of Kansas City, Missouri.

Margaret was winner in the string division of the National Federation

of Music Clubs Contest in New York, April, 1946. The winning composition, "First Suite for Three Stringed Instruments" was performed in October, 1946, at the Iowa Federation of Music Clubs' Convention. Now a senior, Margaret and Lois Fish, cellist, are both listed in *Who's Who* among students in *American Colleges and Universities*. Margaret is the past president of Omega Chapter and her home is in Atchison, Kansas.

Sally Needham, second violinist (see biographical sketch, page 28).

Lois Fish, cellist, from Belmont, Massachusetts. For one year, Lois was principal cellist of the Drake-Des Moines Symphony; staff cellist with radio station WHO, and winner of 1947 Mu Phi Epsilon \$100 scholarship, awarded by the Des Moines Alumnae Chapter in contest.

Marlys Read Cook, violist from Des Moines Alumnae Chapter, holds both a Bachelor's and Master's degree in Music Education from Drake University. She is principal violist in the Drake-Des Moines Symphony and has appeared as soloist with that

organization. At present, Marlys is teaching stringed instruments in the Des Moines public schools.

This group, with Nancy Cook, pianist, toured professionally in 1945-1946, giving concerts in Iowa and Kansas. Its major appearance was a recital in Joselyn Memorial Auditorium, Omaha, Nebraska, March, 1946, sponsored by the Nebraska Federation of Music Clubs. This year the second violinist is LeRoy Bauer of the Drake violin faculty; otherwise the group is entirely Mu Phi.

★ IN MEMORIAM ★



Marjorie Evans

lision which occurred in Albany on March 1, while she and her husband were returning home from a visit with friends in Eugene, Oregon.

Her husband, John Stark Evans, suffered slight injuries. As head of the music department at Lewis and Clark College, Portland, Oregon, he and Marjorie worked together for and eagerly looked forward to the installation of the new Mu Phi Epsilon Chapter, scheduled to take place the latter part of March.

Marjorie's untimely death leaves a gaping void especially for the Trouveres Club, a girl's honorary music society, which she organized and sponsored as the future Mu Phi Chapter. She was also state president of the League of Women Voters.

Our deepest sympathy is extended to Mr. Evans; to her sisters in Mu Phi Epsilon and to the students of Lewis and Clark College who held her in such high esteem.

WORD has just been received from Portland Alumnae Chapter of the sudden death of MARJORIE EVANS in an automobile col-

THE PRIDE OF MU PHI

JOYZELLE RAY

Joyzelle Ray of the San Francisco Alumnae Chapter recently distinguished herself as an outstanding pianist in her recital at Marines' Memorial Theater.

Joyzelle graduated from the Cincinnati Conservatory of Music and then received European training under the eminent pedagogue, George Gruenberg. She also has worked with Jakob Gimpel, the brilliant Polish pianist. For the past three years she has been assistant professor of piano at the Dominican Conservatory of Music in San Rafael where she has given numerous recitals. Joyzelle has appeared successfully in recitals in the Middle West and on the Pacific Coast. Her radio appearances include engagements with the Columbia Broadcasting System in its Cincinnati stations, with the National Broadcasting Company Station KPO in San Francisco and more recently in the Evening Concert Series over KYA.

Press notices have acclaimed Joyzelle as one of the foremost among the younger American Pianists. Our alumnae chapter is justly proud of Joyzelle.—MILDRED MCKEE.

CATHERINE VENDITTI HASEMAN

Catherine Venditti Haseman, talented member of Phi Sigma Chapter entered De Paul University, Chicago, Illinois, in 1930 as a special student, re-entering in 1937 as a

candidate for an A.B. degree. She graduated in 1941 as a piano major under Walter Knupfer. Since then she has spent two years as music director in the Junior High School of Berwyn, Illinois; has appeared four times as soloist with the De Paul Symphony Orchestra; has performed at Great Lakes Naval Station; and was guest soloist on a Virginia radio broadcast.

In 1942 Catherine married Carl Haseman, professor of orchestration at Northwestern University.

On Sunday, February 16, she gave a piano recital in the Little Theater of De Paul University, Chicago. At the present time she is giving frequent recitals in and around Chicago, teaching piano in her Chicago home, and very busily engaged in rearing a two and a half year old son.—LOIS ANDERSEN.

Joyzelle Ray





←
Catherine
Venditti
Haseman

versities her senior year; and was contralto soloist in the Concordia Concert Choir under Paul Christensen and sang in Seattle, Spokane, Portland, Vancouver, as well as many other cities on tour.

A recent letter to Hildur Shaw dated February 9, 1947, says in part: "I'm living in what the English call 'digs'—a small room in a large apartment house. I had been warned by Grace Vernon as to the abnormal condition of England and the inconveniences I'd have to put up with. However, it isn't all as bad as I had pictured it. The present fuel condition is critical . . . everything is rationed; but no one is starving. The greatest lack is sugar . . . consequently I have a continual craving for candy, which is rationed to a pound a month.

People here on the whole seem to have a far broader knowledge than we of classical literature, art and music. . . . The average Englishman takes time off to go to the theater, concerts and art galleries. I read every spare moment, study French, attend as many concerts as I can, visit art galleries, and get all confused in London's little winding streets. (They remind me of the ones in "the city" near Saint Paul.)

Teyte-Vernon Studio is at present located at Thigmore Hall. Grace Vernon teaches the de Redzke method of voice production.

Maggie Teyte, now on concert tour, is expected to return in April to coach her students. I am very pleased with the method which strives for effortless singing and simplicity. . . . Grace Vernon is a very charming person, besides being a perfectionist and a taskmaster. I look forward to each lesson and go away realizing how much I have to learn

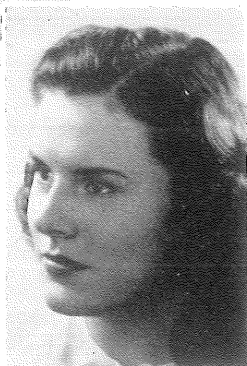
before I know anything. At first I took four lessons a week, then three, and shall cut it to two when I feel I can practice by myself. Finding a place to practice is the most difficult of all. What I am hoping for is a piano in the place I live.

Well, Hildur, that's really about all I can tell you now. . . . It is a shame more people aren't able to study in another country to see how other people live and think. My best wishes to Phi Iota and to all the Mu Phi girls. I miss you all very much."

ELISE CAMBON

Elise Cambon, organist of St. Louis Cathedral, New Orleans, Louisiana, is one of the foremost musicians of that city, and one of the very few specialists in the rare and beautiful art of the Gregorian Chant.

As a child she and her sisters studied piano in Paris where her father was attache to the U. S. Embassy for seven years. Back in Louisiana she continued her studies with the late Madame Eugenia Wehrmann Schaffner but not with a career in mind. Upon graduation from Newcomb in 1940, she became a social worker. But Elise was not happy; two years later, as a hobby, she studied organ with Ferdinand Dunkley. Fascinated and thrilled with the instrument, she soon excelled in it. The next year, encouraged by Palmer Christian, celebrated organist of the University of Michigan, she entered the University for advanced study. It was here that Elise became affiliated with Mu Phi Epsilon. Twice granted scholarships because of her unusual gifts, she will receive her M.A. degree from the University of Michigan this year.



Estelle
Johnson
→

ESTELLE JOHNSON

Estelle Johnson, a graduate of Concordia College, Moorhead, Minnesota, last June, sailed for England, January 3, where she is now studying voice at the Teyte-Vernon School. After appearing as contralto soloist on the active delegates program during the Victory Convention, Estelle continued her study in New York with Maggie Teyte and Conraad Bos. Her teacher at Concordia was Thelma Halvorsen, a splendid Mu Phi who has helped many girls to stardom.

Besides serving Phi Iota Chapter in many capacities, Estelle is a member of Alpha Psi Omega, National Honor Dramatics Society and Alpha Zeta Phi, local honorary. She served on the student forum two years; reigned as Homecoming Queen in 1945; was listed in Who's Who among American Colleges and Uni-





INFORMATION *If You Please*

ATTENTION, MU PHI COMPOSERS!

ARE you represented in the NATIONAL MU PHI COMPOSER'S FILE? The chapters really WANT to perform your compositions. Please send a list of them today either published or unpublished, to the office of the national second vice president, RUTH ROW CLUGHER, 21 KENT ROAD, UPPER DARBY, PA. If the composition has been published please include name of publisher. If not, state whether or not manuscript copies are available for lending to the various chapters. Mention chapter affiliation as well as home address.

FRIENDS OF HARVEY GAUL COMPOSITION CONTEST

Immediately following the untimely death of Dr. Harvey B. Gaul, December 7, 1945, Pittsburgh, wishing to honor this distinguished citizen, organized "The Friends of Harvey Gaul, Incorporated." Announcement of its first Composition Contest has just been received. It is divided into two classifications—

(a) *A Composition for Organ.*

(b) *An anthem for Mixed Voices.*

A prize of \$50.00 will be awarded in each classification. For rules of the contest write: The Friends of Harvey Gaul, Inc., 315 Shady Avenue, Pittsburgh 6, Pa. All compositions must be submitted on or before September 1, 1947.

MU PHI EPSILON 1948 ORIGINAL COMPOSITION CONTEST

Although February 1, 1948, may now sound distant, it is not really too soon to begin thinking about your entries for the next Original Composition Contest. Please note the change of deadline from March 1, as in previous contests to February 1. This has been done to allow the judges enough time to arrive at a decision before the 1948 Convention.

Detailed instructions will be printed in the November TRIANGLE and

REMINDER

November TRIANGLE material is receivable—NOW. Deadline September 10.

also sent to all Active and Alumnae Chapters and Clubs. (See last January TRIANGLE for 1946 winners.)

BALLAD FOR YOUTH

By PHYLLIS FERGUS HOYT

Of interest to Mu Phis is a new *Ballad for Youth*, recently published by the Pallma Company in Chicago. The number is dedicated to "Citizens of Tomorrow" and is for high school choruses.

The music was written by Mu Phi's Phyllis Fergus Hoyt, gifted composer and former president of the National Pen Women. The words were supplied by Philip Maxwell, director of *The Chicago Tribune's* Chicagoland Music Festival. Mr. Maxwell is the husband of Helen Purcell Maxwell of Depauw's Zeta Chapter of Mu Phi Epsilon.

RIGHT OFF THE RECORD

Recent Recordings of Special Interest

By BEATRICE MULLIAN MOORE

MESSIAH—*Handel*

Isobel Baillie, Gladys Ripley, James Johnson and Norma Walker with Huddersfield Choral Society and Liverpool Philharmonic Orchestra conducted by Malcolm Sargent (Columbia MM 666).

NORMA—*Bellini*

Gina Cigna, Ebe Stigani, Giovanni Breviario, Taneredi Pasero, Ardriana Perres, Emilio Rienzi, EIAR Chorus directed by Achille Consoli and EIAR Symphony Orchestra conducted by Vittorio Gui (Decca—Parlophone records).

WALK TO THE PARADISE GARDENS—*Delius*

Cincinnati Symphony Orchestra, Eugene Goosens, Conductor (Victor—11-9493).

SYMPHONY No. 5—*Prokofiev*

Philharmonic Symphony Orchestra of New York, Arthur Rodzinski, conductor (Columbia MM 661).

HELP WANTED!

THE TRIANGLES of the following Mu Phis have been marked "Unclaimed" by the Post Office Department. If you do not wish to have your TRIANGLE meet the same fate, notify the National Executive Office, 6604 Maplewood Ave., Sylvania, Ohio, of any change of address *immediately*. Transcripts are sent to the publisher one month in advance of the publication date. Bernice Oechsler will appreciate your assistance in helping to locate the following:

Helen Faye Erickson—Mu Upsilon
Ruth Keim Hirst—Omicron
Claire Garlick—Tau
Eleanor Sink Chapman—Iota Alpha
Margaret (Peggy) Airth—Phi Mu
Vera Isabelle Wright White—Beta
Beatrice Judson Parish—Mu Upsilon
Peggy Elaine Hearn Youngblood—Phi Psi
Catherine Berthola Pirosh—Theta
Olive Lloyd Harris—Phi Gamma
Marjorie Catlin—Phi Pi
Gladys D. Fried—Mu Chi (?)
Dorothy W. Howell Rybolt—Nu
Ruth M. Farwell Kilby—Mu Zeta
Mary Griffith Hallenbeck Nelson—Lambda
Elsie Camilla Heiberg—Phi Iota
Marceline Morin—Mu Omicron
Evelyn Crump Robbins—Zeta
Dorothy Jean Sedick—Phi Kappa
Marion Elizabeth Hack—Psi
Joan Jennings—Iota Alpha
Ruth Orcutt—Iota Alpha

MUSIC IN HOSPITALS FUND

Received since close of fiscal year on May 31, 1946, all of which is now credited to receipts as of our year 1946-47:

Kansas City	\$17.33
Meadville	5.00
Mu Beta	10.00
Oklahoma City	50.00

Xi	20.00
Rochester and Mu Upsilon....	50.00
Philadelphia	5.00
Nu	5.00
Denver	38.75
Tulsa	75.00
Gamma	50.00
Zeta	15.00
Detroit	15.00
Tau	10.00
St. Paul	5.00
Chicago	25.00
Phi Chi	5.00
Phi Nu	10.00
Mu Epsilon	10.00
Phi Mu	5.00
Denver	38.75
Portland	5.00
Seattle	10.00
Phi Omicron	10.00
Epsilon Alpha	5.00
Milwaukee	10.00
Cincinnati	15.00
Cedar Rapids	10.00
Mu Omicron	5.00
Theta	10.00
Boston	10.00
Indianapolis	10.00
Cleveland	15.00
Kappa	10.00
Meadville	5.00
Epsilon	15.00
Pittsburgh	10.00
Phi Theta	3.50
Xi	20.00
Jean Klussman—Xi Sponsor..	5.00
Phi Epsilon	5.00
Toledo	10.00
New York City.....	5.00
San Francisco	10.00
Ann Arbor	10.00
Chicago	15.00
Iota Alpha	10.00
San Diego	5.00

Total cash contributed.....\$718.33
Pledged but not paid:
Phi Mu

15.00

Phi Phi	1.00
St. Louis	10.00
Nu	5.00
Oklahoma City	15.00
Phi Iota	100.00
Phi Zeta	5.00
Phi Pi	10.00
Phi Nu	15.00

Total pledged

\$176.00

Total cash contributed.....\$718.33

Total pledged

\$176.00

Total Available

\$894.33

CONGRATULATIONS!

WEDDING BELLS

Mu Nu—Dorothy B. Parcels to Paul Hasselbring, December, 1946, at Hiawatha, Kansas. Address: Box 854, Lodi, California.

Epsilon—Jean E. Bollinger to Jack Jones, February, 1947, at Toledo, Ohio.

Gamma—Carolyn Street to Henry Austin, January, 1947, at Santa Fe, New Mexico.

Phi Gamma—Lola Sanders to James Emory Faust, February 8, 1947, at Washington, D. C.

Mu Omicron—Dorothy Robinson to Benjamin Helburn Sachs, Jr., December, 1946, at Cincinnati, O.

STORK VISITS

Mu Epsilon—
Daughter, Ethel Mae II, to Wm. B. and Ethel Mae Bishop Gillette, February 1, 1947, New York City.

Cleveland Alumnae—
Daughter, Carol Mae, to Theodore and Doris Brown Scherzer, December 23, 1946, Lakewood, Ohio.

Philadelphia Alumnae—
Son, Bruce Joseph, to Joseph H. and Victoria Totoff Nolin, December 11, 1946, Philadelphia, Pa.



Enjoying a piano lesson although they cannot hear a note of music, are a group of deaf children, under the supervision of Ferne Heiny of the Denver Alumnae Chapter. (Note how some of the children rest their hands on the piano to feel the vibrations.)

Meeting the Challenge OF THE PHYSICALLY HANDICAPPED

BY BERNICE PAULA JACKSON

Denver Alumnae Chapter

△ FERNE HEINY, teacher of piano classes in the Denver Public Schools, organized a class in piano for deaf and hard of hearing students at Evans school three years ago, and since that time interest has steadily increased.

The method Ferne uses is a combination of lip reading, careful observation of the movement of the teacher's hands, and imitation of what is seen. Although the children do not hear with the physical ear,

they are able to hear mentally through the vibrations they feel when placing their hands on the piano or sounding board. The children play accurately with good clear tones, and seem to sense when they play a wrong note.

To illustrate the skill the deaf children are able to attain, Ferne placed some from her deaf class on a recital she gave at Chappell House, with normal children participating,

(CONTINUED ON PAGE 28)



Dorothy Ornest Feldman

MU UPSILON'S ORNEST SISTERS

△ OUT of Mu Upsilon Chapter have come two fine professional Mu Phi sisters: Naomi and Dorothy Ornest. Each in her own right has won many honors. Both received their Bachelor of Music degree in voice, with Lucy Lee Call, from the Eastman School of Music, Rochester, New York. In addition, Dorothy has a piano major with Donald B. Liddell.



Naomi Ornest

Family RELATIONS in Mu Phi Epsilon

Now married to Robert S. Feldman on the faculty of the University of Michigan, Dorothy is happily affiliated with the Ann Arbor Alumnae Chapter. During her first year in Ann Arbor, she completed her Master's degree in voice under Arthur Hackett. Since then she has studied with Mrs. Arthur Schnabel whenever she can steal away to New York.

Continuing an active concert career in both voice and piano begun in Rochester, Dorothy has given many recitals throughout Michigan. She has sung with the University's String Quartette, the Flint Symphony and enjoyed the dramatic



Phi Iota's Irene and Georgia Tainter

experience of the leading soprano role in "The Chocolate Soldier."

Of her most exciting and encouraging performances, Dorothy places at the top her appearance last season with the New Friends of Music in Town Hall, and this season, with the New York Philharmonic Chamber Orchesta at the Saratoga Springs Music Festival. In addition to Mu Phi Epsilon, her affiliations are with Phi Kappa Phi and Pi Kappa Lambda.

The leading role in a high school production of Friml's "Firefly" started Naomi Ornest pursuing an operatic career. "By then, thoroughly stage struck," says she, "Imagine my joy at receiving a state scholarship to study at Eastman." During her four years there she received the Mu Phi Epsilon award and the George Eastman Scholarship. She appeared as soloist with the Rochester Philharmonic Orchestra, and many choral groups on the campus, and had the leading role in three operas. The McCurdy Scholarship award made it possible for her to appear on station WHAM in two concerts, the station over which her sister Dorothy had frequently been heard. Later Naomi had an FM program of her own.

At present Naomi is in New York studying with Mrs. Arthur Schnabel. Recently she had the lead in "Der Rosenkavalier" at Hunter College.

In April she is to sing the lead in an American opera at the Waldorf-Astoria as a result of having won the State Federation of Music Clubs' contest in 1946. Naomi writes: "My lessons and concert appearances, supplemented by teaching and studio accompanying, keep me busy and happy working toward the full realization of a career as an opera and concert singer."

IRENE AND GEORGIA TANTER

Mother - Daughter

△ PHI IOTA is very proud to present this musical mother-daughter team, Irene and Georgia Tainter. They have been performing together since Georgia was a little girl, the mother Irene accompanying the daughter violinist in many concerts throughout North Dakota.

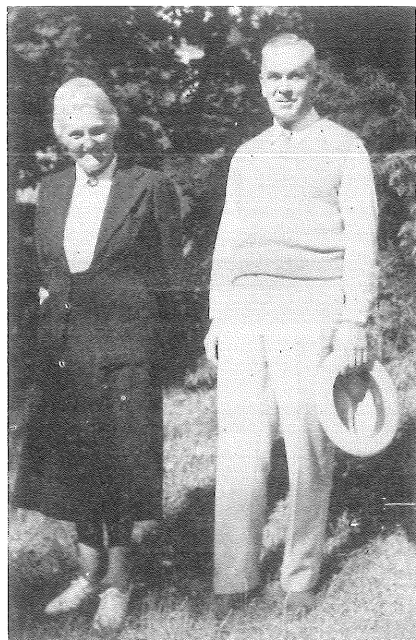
Irene attended the New England Conservatory of Music, Fargo College, receiving her B.M. degree from Concordia School of Music, with a major in piano. For many years she taught piano at Fargo and Concordia Colleges, and served as church

organist in the city. She was largely instrumental in bringing Phi Iota Chapter to Concordia. Active in many state and local music groups, Irene has contributed much to the musical life of the community. Married to a leading physician who has found it necessary to spend two or three months each year in the south, Irene and Georgia have contributed to and shared in the musical and recreational life of Florida.

It was during her senior year at Rollins College, Florida, that Georgia was married. While a student there, she played in the college quartette, trio and orchestra. For three years she was violinist in the Florida Bach Festivals and gave several recitals. Recently, she was a winner of one of the North Dakota State Federation of Music Clubs' contests, and last year appeared as soloist on the MSTC Lyceum series. Georgia is rated as one of the top ten women golfers in the United States and has participated in most of the national tournaments during the past few years. Her social affiliation is Kappa Kappa Gamma, and Irene is a Gamma Phi Beta.

MU BETA CHAPTER'S LOUISE AND HEBER NASMYTH

△ LOUISE FERGUSON was born in Victoria, British Columbia, and had all her early training in All Hallows' School for Girls, where music and languages were stressed. She matriculated from McGill University but attended Toronto Conservatory of Music instead of McGill; then to Syracuse University, New York, where she took the course leading to Bachelor of Arts in Music. A teachers' course in Boston was followed by three years' study in Germany with Paul Lutzenko and



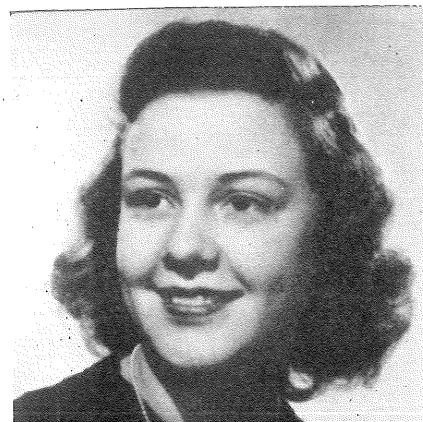
Severin Eisenberger. When making plans to go to Berlin, a mutual friend and distant relative gave Louise a letter of introduction to Heber Nasmyth who had just finished a year's study in Milan, Italy, and was in Berlin studying voice with Richard Lowe and Franz Emmerich. This friend asked that Heber help Louise get settled, with the language, etc., which he proceeded to do! At the end of the first year they were engaged and were doing a great deal of concert work as Baritone and accompanist. Appearances at Leipzig, Halle, Berlin, etc., took place during the next two years, then they returned to America for concerts throughout Canada. Later came their marriage and concert appearances in the United States. Next a teaching position at the University of Illinois, where their son was born, and finally to the State College of Washington, where they have been

for the past twenty-six years, both teaching and doing concert work. Here Louise became affiliated with the then newly organized Mu Beta Chapter of Mu Phi Epsilon. She represented Mu Beta as delegate at a convention in Kansas City. An advisor to Mu Beta for a great many years, Louise only recently resigned this office. At the time of her resignation she was presented with a beautiful volume of Audubon's America by the chapter she had served so long. She also holds membership in Mortar Board and Kappa Alpha Theta.

Heber and Louise have three lovely grandchildren, whom they visited in Los Angeles last summer, and they are looking forward to a reunion of the two families at the summer home "Glenwild," near Victoria, B. C., this coming summer. The accompanying picture was taken at "Glenwild."

Among their memories they treasure premieres of all the Richard Strauss operas with Strauss conducting at the Berlin Royal Opera House; the d'Albert opera, with visits to his home; "Hansel and Gretel" with Humperdinck in the box; and the performances at the Royal Opera of Enrico Caruso.

The Needhams



ABOUT THE NEEDHAMS
MOTHER—*Ruth*
DAUGHTERS—*Sally (Sarah Jane), Ruth Mary*

BY MILDRED SHORT GALLATIN

△ DES MOINES ALUMNAE CHAPTER has the distinction of having in its membership, Ruth Kline Needham, mother of two Mu Phi daughters, Sally and Ruth Mary.

After graduating from Des Moines Musical College in 1913, Ruth studied piano and organ at Drake University for two years. During that



time she was affiliated with Omega chapter of Mu Phi Epsilon. After leaving school she was organist at the Greenwood Congregational church for ten years during which time she was married to Dring D. Needham, a Des Moines attorney.

Besides being a busy wife and mother, Ruth is assistant organist at Plymouth Congregational church; is active in musical circles as piano soloist, accompanist and duo-pianist; and contributes in many ways to the civic life of Des Moines.

In 1944, Sally (Sarah Jane) received her B.M. degree from Oberlin Conservatory of Music, Oberlin, Ohio, with a major in violin. While in Oberlin she studied with Raymond Cerf and Reber Johnson.

Following graduation, she worked as Cryptanalytic aide for Communications Division of U. S. Army at Arlington, Virginia, until the end of the war. That September she entered Drake University where she re-

ceived her Master of Music degree in violin as a student of Professor Frank B. Noyes. During her year at Drake she became a member of Omega chapter. At present she is director of Youth and Young People's choirs at Brick Presbyterian church in New York City and is studying violin with Edouard Déthier of Julliard School of Music.

Ruth Mary, also a violinist, graduated from Stephens College, Columbia, Missouri, in 1945. She was principal of second violins of Burrall Symphony Orchestra at Columbia, Missouri. She attended Oberlin Conservatory of Music last year and is now a student in Drake University where she will graduate with a Bachelor of Music Education degree, violin major. She was initiated into Omega Chapter in January of this year. The Des Moines Alumnae chapter had the pleasure of hearing her play at a recent meeting.

Meeting the Challenge

(CONTINUED FROM PAGE 23)

and no one in the audience even suspected their handicap.

She has had many interesting experiences in this work, the worse the case, the greater the challenge, and the greater the thrill of seeing them progress. One of her most interesting pupils was a little girl seven years old. She was completely deaf, could not speak a word, had very poor vision, and had a paralyzed upper lip. She could not read lips and did not know her letters. There was a real challenge! Inside of three months the little girl played a lovely little number on a recital. Ferne

said she doesn't know who was the more thrilled, she or the girl's mother.

There are many instances in which this piano training has enriched the lives of these handicapped children to a marked degree.

The above picture was published in a leading Denver newspaper and created so much interest that the KLZ Broadcasting station asked Ferne for an interview. Her work so appealed to the managers of the Baldwin Piano Company, that they gave her a lovely new piano for the exclusive use of the deaf children.

San Francisco, Cal.
Joyzelle Ray in Piano Magic
 JOYZELLE RAY, a young woman of excellent musical background and sponsorship, last night at the Marines Memorial Theater, played a piano program of Handel, Schumann, Brahms, Bartok, Poulenc and Beethoven. In each the artist displayed virtuosity and scholarship. She latterly has studied with George Oppenberg, disciple and relative of Schnabel, acclaimed the greatest living exponent of Beethoven. It was to be expected she would conspicuously excel in the "Six Bagatelles" and the Sonata, Op. 109, a major of Beethoven. She did not disappoint. She gave more than good measure of execution. Technique and interpretation were in the Schnabel tradition. Comparable to these offerings was her playing of the Schumann "Arabesque, Opus 13," technically complex, poetically lovely, filled with some of Schumann's most profound utterances. Quite different in mood and manner of playing was Bela Bartok's Rhapsody in C major and "Five Bagatelles." They were lively and terse.

Miss Ray's approach to the keyboard is held without loss of femininity — authoritative, yet poised and contained. Her harmonics are clean and her chromatics limpid and colorful. Her choice of program is an index to her high standard of musicianship.
 —M. H. D.

N. Y. Concerts
 MUSICAL COURIER
Maria Mendoza Appears
 Maria Mendoza, who gave her New York recital Feb. 4, is one of those fortunate possessors of a lyric soprano voice which is equal to the sustained legato of the classics, the weight of lieder and the subtle shading of the French and modern Italian. The voice is notable for range, smoothness and a warm tonal color which retains clarity and distinct diction under all dynamic demands. Miss Mendoza deserves citation also for her selectivity in program material and her musicianly approach. Listed on her program were the opening Bach air, Come make my Heart Thy Home; a group of lieder by Brahms and Strauss; three Marx songs; the Casta Diva from Bellini's Norma; Debussy and Turina compositions and an English group comprised of The Bird (first performance), by John Duke, Walk Sirena, Winter Watts' lovely dramatic song.
 M. C.

Newly Organized Chapter Officers



OFFICERS for the newly-organized alumni chapter of Mu Phi Epsilon are pictured, from left to right: **Lola Ayres Gordon**, Vice President; **Ardeen Burkett**, treasurer; **Marguerite Ellott**, president, and **Emily Blyden**, secretary.

Los Angeles 1947 Engagements
KADLEY-MATHIS — Constance Mathis, daughter of Mr. and Mrs. Leiland A. Mathis of Glendale, Charles L. Kadley, President.

Mr. and Mrs. A. M. Kistley The bride-elect was a Zeta Tau Zeta at Occidental College and is president of Mu Phi Epsilon at U.C.L.A. Her fiance, a senior at U.C.L.A., attended Pasadena Junior College. The engagement was announced at a tea yesterday by Mrs. Mathis home.

AMERICAN-STATESMAN, AUSTIN, TEXAS



Joan Kuhl and **Betty Jean Houser** will present a two-piano recital Sunday at 4:30 in the Recital Hall. Both are members of the music faculty of the College of Fine Arts, University of Texas.

Music of the West Magazine, 1947 February, 1947 MU PHI NEWS

Mu Nu Chapter
 Dr. and Mrs. Arnold Wagner, members of Mu Nu chapter of Mu Phi Epsilon, held their annual tea and musicale honoring patrons of the chapter, January 12, 1947. Highlighting the affair was the installation of Dr. and Mrs. James Sample, Dr. and Mrs. Miklos Rosza, Dr. Ernst Toch, Mr. and Mrs. William Gould, and Mr. Ralph Rush, as patrons. All are noted for their encouragement of young talent and for their active interest and participation in the practice and profession of music.

Margaret W. Walker, national first vice-president of the sorority, welcomed the new patrons, followed by a musical tribute from **Terry Mignon**, violinist, and **Jean Rotzler**, soprano and president of MuNu chapter. General arrangements for the afternoon were under the direction of **Dorothy Recco**.

The new patrons were instructed in their duties and privileges and were then introduced to members of the chapter and patrons of longer standing. In the latter group were Mr. and Mrs. L. E. Bolymer, Mr. and Mrs. Horatio Cogswell, Dr. Ernest Kanitz, Dr. Mary Sinclair Crawford, and Mr. Howard Patmore. Mu Nu chapter is located at the University of Southern California.

Portland, Oregon
 Miss Joannetta King, pianist, will be presented in concert at Portland, Oregon, on February 13, playing the Ravel concerto with the University of Oregon Band. J. H. Stehn of the University faculty will conduct the performance. Miss King is vice-president of Nu chapter at the University of Oregon, and her selection as soloist with the University Band is a tribute to her outstanding talent.

Phi Mu Chapter
 Phi Mu Chapter of Mu Phi Epsilon held its annual dinner during January at the home of Mr. and Mrs. Clarence Gustlin, Los Angeles, with Constance Mathis, president, as hostess. The program was presented by Mr. Gustlin, pianist; Elizabeth Burr, flutist; Catherine Crunk, soprano, and Phyllis Hausman, pianist.



Kennell-Bills photo, Wilshire engraving. MRS. KNOX

Phyllis Gray Knox To Appear in Recital

Eugene native and alumnae groups of Mu Phi Epsilon will sponsor Phyllis Gray Knox in a piano recital Thursday evening at eight o'clock at the School of Music Auditorium on the university campus.

Mrs. Knox recently returned from two years' study at the New England Conservatory of Music in Boston, where she received both her bachelor and master's degree in music. She made numerous concert appearances in the east, and while in Boston appeared as soloist with a famous Boston Symphony. Her previous study was with Augusta Potter Underwood of Eugene.

Mrs. Knox is a member of Mu Phi Epsilon and also of Phi Kappa Gamma, national music and scholastic honorary, a soloist in the Rachmaninoff concerto, on the second piano.

Oct. 20-'46 Music Sorority to Present Annual Autumn Musicale

Mu Phi Epsilon, national music sorority, will present its annual autumn musicale at 8:15 p. m. Friday at Drake university auditorium.

Guests of honor will be new students at the university. The program will be open to the public.

On Program. Appearing on the program, which has been arranged by Mrs. Forest L. Stewart, program chairman, will be Mrs. George H. Watta, soprano, president of alumnae chapter, and Miss Margaret Davis, violinist, president of Omega chapter.

An operatic duet will be sung by Misses Betty Jo Burton and Marian Johnson, and duo-piano numbers will be played by Misses Frances Freudenberg and Evelyn Wachtel, Miss Dorrie Shearer, contralto, and Miss Bonnie Compton, pianist, will play solos.

A feature of the program will be a string quintette, which will play compositions by Cesar Franck. Personnel of the group will be Miss Margaret Davis, first violin, Roy Bauer, second violin, Mrs. Marlys Cook, viola, Miss Lois Fish cello and Miss Nancy Cook, piano.

Miss Evaleno Bell will direct the Mu Phi Epsilon chorus in a special arrangement of the sorority song.

Mrs. Roland A. Gallagher is promotional chairman of the sorority.

3 SCHOLARSHIPS GIVEN AT DRAKE

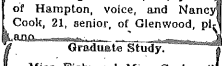
Three \$100 scholarships to the college of fine arts at Drake university were awarded Saturday by the Dea Moines Alumni chapter of Mu Phi Epsilon, national music fraternity.



LOIS FISH



NANCY COOK



DOROTHY BREDT

Miss Evaleno Bell will direct the Mu Phi Epsilon chorus in a special arrangement of the sorority song.

Mrs. Roland A. Gallagher is promotional chairman of the sorority.

Berea, Ohio Baldwin-Wallace Conservatory of Music National Federation of Music Clubs 24th Biennial Convention Detroit, Mich. The Old Maid and the Thief Will be given by the Baldwin-Wallace Workshop, Mr. Leonard Treash, Conductor, on Opera Day (THURSDAY, APRIL 24, 1947). The following voice students will participate: Mary Anna Essel, Arlene Ferwer, Oscar McCullough and Miss Janice Schwendeman of the Faculty.

Drake-Des Moines

Miss Yeend, Lanza Given Ovation With Symphony

By HARRY E. BURKE. The joint St. Louis debut of Miss Yeend, soprano, and Mario Lanza, tenor, with the St. Louis Symphony Orchestra under Vladimir Golschmann's baton at Kiel Auditorium last night resulted in an ovation which threatened to become a fiesta despite the fact that to a symphony devotee singers mean "opera" and opera means "work."

And despite, too, the fact that Miss Yeend's first essay entered into the realm of coloratura—that of "the noon-whistle girls"—and provided this reviewer in advance with every possible reason to exploit his prejudices.

She has sung with the orchestra "The Jewel Song" from "Faust"—a Marguerite garb in Mestophlean scarlet, and singing more or less that way. While Mr. Lanza had in his first disclosure—the M'appari from "Martha"—revealed a fine tenor, splendidly placed and used with ease, despite his boyish manifestation of nervousness.

The result—a triumph. After a duo episode from "Boheme" as an encore. After the "Boheme" episode, the program was necessarily repeated.

Mu Phi Epsilon Events

Paula Lechner, soprano, was soloist at the first all meeting of the New York City Alumnae Chapter of Mu Phi Epsilon in the Panhellenic Club Room of the Becker Tower Hotel. Gayle Giles was her accompanist. Founders' Day was observed. The program was presented by Grace Hoffman, mezzo-soprano, and Elaine Sully, violinist.

Five new members were initiated at the sorority's Victory Convention: Geraldine Spatziani, soprano; Edith Nestberg, contralto; and Mary Craig, soprano. Chapter officers for this year are Gladys Shafer, president; Doris Frerichs, vice-

president; Elizabeth Ball Kurz, recording secretary; Lois MacMahon Joyce, corresponding secretary; Marie deKryzer, treasurer; Gertrude Otto, historian; Jean Cumming, warden; Adelaide Van Wey, chaplain; Margaret Sherman, chorister.

IN THE NEWS



AT A REUNION OF MUSICIANS, members of Mu Phi Epsilon, national music sorority, Saturday at the Park Hill home of Mr. and Mrs. George Minnendon Parsons (at left) are (left to right next to the hostess) Gertrude Hopkins, harpist, who has appeared here on Chamblaine Club programs and with the Melo Glee Club; Rose Blizman, oratorical singer; Gladys Shafer, president of the society's New York Chapter, in whose honor the party was given, and (standing) Louise Blizman, pianist, winner last year of an appearance at Carnegie Hall with the New York Philharmonic; pianist, entertained for the 30 guests at the Parsons home, 158 Alta Avenue. Mrs. Parsons was hostess. Hopkins will play in Yonkers this Fall at First Presbyterian Church. Mrs. Parsons was national chairman for the recent New York City convention of the sorority.

Pianist Louise Meizner, Luventritt Award winner in 1945, gave a recital on Nov. 5 which included works by Beethoven, Mendelssohn, Debussy, Gershwin, and Prokofeff. Miss Meizner is equipped with a big technique, and gets a good sound out of the piano. That the lady has a special affinity for the modern was evidenced by her excellent readings of Debussy's "Pour le Piano," and Prokofeff's high spirited, brittle third sonata—S. L. S.

Mrs. John Galen Spencer (Ada Belle Filer) was heard in programs in Pittsburgh and Fort Scott, Kans., recently. She will sing before the Kansas City (Mo.) Alumnae Chapter of Mu Phi Epsilon, Jan. 21.

Mrs. John Galen Spencer (Ada Belle Filer) was heard in programs in Pittsburgh and Fort Scott, Kans., recently. She will sing before the Kansas City (Mo.) Alumnae Chapter of Mu Phi Epsilon, Jan. 21.

IN THE NEWS

St. Louis Post-Dispatch



Jean Browning Is Fiancee of Easterner

Friends of Miss Jean Browning, daughter of Mrs. Nona J. Browning of the Parkview Hotel, will be interested in the announcement of her engagement to Francis King Carey Madeira, which was made at a party given Thursday at the home of Mr. Madeira's parents, Mr. and Mrs. Percy C. Madeira Jr., 46 Tunbridge rd., Havertown, Pa. Mrs. Browning went east Dec. 20 to join her daughter, who has been making her home in New York for several years.

Well known in musical circles, Miss Browning studied piano here under Leo Miller and voice with Bernard Ferguson. She was awarded a fellowship in the Juilliard Graduate School of New York, where she met her fiance, who was also studying there on fellowships with Mme. Olga Samaroff in piano and the late Albert Stessel in conducting, both former St. Louisans. Miss Browning remained at Juilliard for five years and since then has devoted her time to study in New York and recitals and concerts. She is now a member of the San Carlo Opera Company, singing leading contralto roles. She has appeared here twice with the Little Festival in 1935. A former student at Washington University, she is a member of the Mu Phi Epsilon sorority.

MISS JEAN BROWNING, daughter of Mrs. Nona J. Browning. Her engagement to Francis King Carey Madeira was announced Thursday.

Mrs. Dill Retains Chairmanship

The National Council of Mu Phi Epsilon announces the reappointment of Helen C. Dill of Beverly Hills as National Chairman of Scholarships for 1946-47. Mrs. Dill will consider the professional, cultural, and extra-curricular qualifications of scholarship candidates presented by each active chapter of the sorority. From this group a list of five outstanding petitioners is forwarded to the National Council which then makes the final selection of one cash prize winner and two honorable mentions. Of the latter honors for 1946, one was presented to Maxine Cady Barnes of Nu chapter, University of Oregon. The cash prize was won by Virginia Dale of Phi Iota chapter at Concordia College, Minnesota.

The position of National Scholarship Chairman requires a person of broad professional and cultural experience as a basis for judgment. Mrs. Dill's record as an educator is impressive. She is at present Supervisor of Training (Music) at U.C.L.A. and holds degrees from the



University of Southern California, Columbia University Teachers' College, the University of New Mexico, and a credential in music from U.C.L.A. During the previous decade, she made a study of European music festivals, traveling from Scandinavia to Italy.

Her abilities have been further recognized through her reappointment by Dr. Luther Richman, president of the Music Educators' National Conference, as chairman for 1946-48 of the committee on film music in education. She is a member of the Advisory Council of the National Film Music Council and the American Psychological Association. Her administrative activities include the presidency for 1941-43 of the California Western Division of the M.E.N.C., a term as a national director of that organization, and Faculty Advisor to Phi Mu chapter of Mu Phi Epsilon at U.C.L.A. Her most recent honor is her listing in the postwar edition of Leaders in Education.

ELIZABETH WYSOR HONORED BY FLORENCE WICKHAM

at a supper party after the Town Hall recital of Miss Wysor on Oct. 8. In the group are Mr. and Mrs. Vincenzo Celli, Alis Williamson, Julian Swaman, Barton Cornwall, Florence Wickham, Edw. Smith, Miss Wysor, Joseph Barnett, Alice De Cevie, Mr. and Mrs. Cesare Sotera, Robert Savini, Mr. and Mrs. Deems Taylor. (Photo by Cosmo-Silla)

MUSICAL LEADER Mu Phi Epsilon Announces Awards

Mu Phi Epsilon, National Music Sorority, announces the results of its 1946 biennial Original Composition Contest, which is open only to members of the sorority. The three judges this year were Dr. Howard Hanson, George Frederick McKay, and Dr. Herman R. Reichbach. There are six divisions in the contest.



MUSICAL COURIER

Music News

CATHERINE SAURER



CATHERINE SAURER, who will appear in recital March 9 in Kimball Hall, will present works by Franck, Chopin, Brahms, Liszt and Balakirev as well as her own composition "Thema, Variations and Toccata."

PIANIST - COMPOSER

Sara Jane Horning Soloist in Oratorio
The Dow Chorus of Midland, Mich., directed by Able conductor, Dr. T. A. Osburgh, presented Mendelssohn's "Elijah" Dec. 9-10. The performance was well balanced. The soloists were lovely Sara Jane Horning, whose expressive, true to pitch, and of exquisite quality, and John Toms, tenor, who within three years has taken his place among the foremost oratorio artists.
On Dec. 11 Miss Horning was soprano soloist in an impressive performance of Handel's "Messiah" at the 1st Congregational Church at Muskegon, Mich. Again she won well deserved praise for her musicianship and high artistry.

Musical Leader Mu Phi Epsilon News

Active and Alumnae Chapters and Clubs of Mu Phi Epsilon, National Music Sorority, had a busy fall season. Many chapters have had initiations and social events in connection with rushing, and all chapters report outstanding Founders' Day programs. The members and patronesses of the Twin Cities chapters were entertained at a musicale and supper by the newly-installed Epsilon Beta Chapter of the College of St. Catherine in St. Paul. The Cedar Rapids chapters presented a formal musicale at the Sinclair Memorial Chapel at Coe College which was open to the public and unusually well attended. The sorority members from Madison, Appleton and Milwaukee joined forces in a dinner and concert held at the College Women's Club in Milwaukee. It has been the custom for many years to have voluntary offerings of poems at the Founders' Day celebrations, and it is through this Fund that the Musical Research Contest of the Sorority is supported.
Many of the chapters have already started their annual scholarship concert series and others have made plans for spring events of this nature. The Kansas City groups have held two such musicales—the first one being "An Evening of Music in the Mellow Manner" which played to a capacity house of almost 1000. Plans are also being made by the Sorority for spring musicales in commemoration of the Founders, with the express purpose of building up a fund known as the Sterling Memorial Fund. This Fund will be expended on a large project at the time of the sorority's fifth anniversary in 1953.

Musical Leader New Orchestra Work by Van Vactor

At a Mu Phi Epsilon Scholarship Concert in Atkins Hall, William Rowland Nelson Art Gallery, Kansas City, "An Introduction and Presto," by David Van Vactor, young American composer and conductor, was premiered Nov. 26. The work presented by a chamber music ensemble consisting of twelve members was well received. It starts with a positive melody in clear harmony and moderate tempo, and builds up to a finale in what a Kansas City critic calls "A bewildering speed, written in complex counterpoint." The work is described as unexpectedly effective for small instrumentation.
The composition is dedicated to the Mu Phi Epsilon sorority.
In addition to the new "Introduction and Presto" which the composer conducted, the ensemble was heard in the Mozart Concerto for Flute and Strings. Here, Mr. Van Vactor displayed his virtuosity as a flutist, assisting artists on the program with Mr. Van Vactor and Magenta were Mary Kate Parker, pianist, and Magenta Kerlback, soprano. Walter Cook was accompanist.

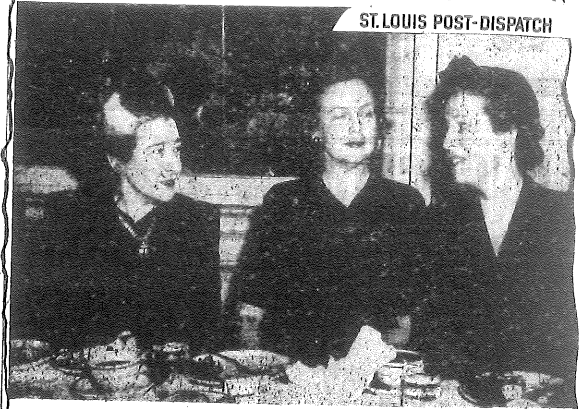
Musical Courier Mu Phi Epsilon Announces Winners

Winners in the 1946 composition contest of Mu Phi Epsilon, national sorority, are, composition for other instruments, by Miss Basig, a work for voice and piano; song, Genevieve Davison Fritter, Cleveland, Ohio; chorus, by Jean Williams, Portland, Ore., an honorable mention going to Bounta Crooke, Washington, D. C.; ensemble, by Roberta Presden of Ann Arbor, Mich.
The Mrs. H. H. A. Beach Memorial Award, open only to former prize winners, was won by Susannah Armstrong Coleman of Washington, D. C., with a work for two pianos. An honorable mention was given Mildred Novot of Dublin, Tex. Besides a money prize, each winner was given a silver loving cup.
The sorority's contest is held in the spring of each convention year and is open to members only. The judges this year were Howard Hanson of the School, George Frederick McKay, University of Washington, and B. Reichenbach.

Musical Leader Mu Phi Epsilon Plans Musicales For Monday

Mrs. Ava Conin Case and Miss Thelma Lewis will present a musical program at the dessert meeting of Mu Phi Epsilon alumnae night to be held at 7:30 Monday, Devondshire Rd.
Mrs. Case will play "Appassionata" by Beethoven, while Miss Lewis will sing "Suppino Love Lyric" and "Song Cycles" by Mary Turner Salter. She will be accompanied by Miss Laura Whelan.

At Luncheon for Symphony



MRS. GRAYSON CARROLL, left, Mrs. J. EUGENE BAKER and Mrs. J. SHEPPARD SMITH JR. at a luncheon given Friday in the lower room of the Congress Hotel, by the Women's Association of the St. Louis Symphony Society of which Mrs. Carroll is president. Mrs. Baker is program chairman and Mrs. Smith, head of the luncheon fund drive. The luncheon was in honor of the women members of the St. Louis Symphony Orchestra.

Concert Presented By Mu Phi Epsilon
Musicians Heard in Piano, Violin And Vocal Performance

By FREDERICK ROINTZ
The concert which was presented by the local chapter of Mu Phi Epsilon in the auditorium of the Museum of Art yesterday afternoon was the first of the several performances of local Mu Phi Epsilon which will give throughout the season.

Opened by Rankin
The program was opened by Rankin with the playing of Schumann's Piano Sonata in G minor, p. 22. In the second movement he achieved a considerable amount of calm thoughtfulness of Schumann's music. And the third movement she played with a notably elegant touch of the tricky rhythms of the movement.

In the vocal portion of the program Helen Leese Sloan substituted for Edna Clement who was disposed of expertly by Mrs. Anna Baker. Mrs. Sloan sang four songs, by far the best of which in content and performance, in the opinion of the reviewer, was the "Symphony in Yellow" of Griffes.

Tone Very Pleasant
Florence Fischer Miller, violinist was accompanied by Isabella Reichert in her playing of the first movement of the Romance in F major, Ravel's Piece in F major and the best of which in content and performance, in the opinion of the reviewer, was the "Symphony in Yellow" of Griffes.

Folk music stems from the heart. It is simple and sincere, yet its very simplicity causes many concert singers to ignore this medium. Why? Don't they realize that it takes the longest time to realize that, most sincere feeling to project a simple folk melody? They cannot rely on the florid vocal accompaniment of the great settling of the emotional climaxes of the German folksongs, the "Lied" of the French nor the "chanson" of the Spanish. A folk tune requires every resource of the artist. One hears many concert programs and occasionally finds one folk song "thrown" into the fast group—the group to the audience appealing group as a "sop" it emerges as over-enthusiasm. But alas! that has happened often to the original folk music that is ours. The folk music that is ours is the music of great singers, not only on the concert stage but in night clubs, radio, such and Broadway shows. Having medium and universal appeal in so many mediums shows most conclusively the real value of folk music.

Here's a tip, concert singers—look into the vast and wonderful collections of folk songs; then sing them—not from the throat—but from the heart.

Fortnightly Program Varied

The Fortnightly Musical Club presented piano, violin and vocal music at Willard Chapp Hall of the Cleveland Institute of Music yesterday afternoon, with Mrs. Norman Caldwell, president, presiding. The diversified program, the club's sixth formal concert, was planned by Mrs. Enold Foster Hardick and introduced Virginia Eppinger, pianist, accompanied by Catherine Gensler, violinist, at the piano, and Beatrice Krebs, mezzo-soprano, with her able piano accompaniment. A responsive, beautifully designed Stradivarius violin, with its delicately spun tone, was sounded concertively by Mrs. Fritter in her playing of Debussy's Sonata in G minor.

DRAKE UNIVERSITY
CHAPTERS OF
MU PHI EPSILON
SIGMA ALPHA IOTA
PHI MU ALPHA-SINFONIA
present
AN EVENING OF MUSIC

* Los Angeles Times
—SATURDAY, FEB. 8, 1947*



HER CAREER'S THE SEA—Capt. Mary P. Converse, passing through Los Angeles from Denver to see her granddaughter, says she expects to go to sea again.

Great-grandma Expects to Skipper Ship Again

Capt. Mary P. Converse came to Los Angeles from Denver yesterday to cuddle her month-old great-granddaughter Gildee for the first time. A veteran navigator, charting U.S. merchant marine, the Canal, Indian Ocean and the South Atlantic, widowed Mrs. Converse is the only female licensed skipper in the merchant marine—is looking forward to going to sea once more.

Gave Navy Instruction
She is 75, a native of Boston, and in 1940 she was granted a captain's license. Since that time she has given navigational instruction to a total of 2500 Navy officers in the dining room of her Denver home. In 1935 Mrs. Converse, who arrived on the Union Pacific's

Los Angeles Limited, was given her second pilot's license. "My husband owned a steam yacht," she said, "and that's how I became interested in sea-faring. I have logged a total of 33,700 miles as a junior navigator and I did all I could to help my country during the war by instructing its naval officers through five years for the Navy Department in the dining room of my Denver home."

Expects to Sail Again
"I expect to be able to go to sea again before the end of 1950 when my license expires, but right now I want to see my new great-granddaughter Gildee at Santa Paula." Gildee is the granddaughter of Elisha E. Converse, 53, Santa Paula rancher, one of a family of three sons and one daughter of the woman skipper.

BETWEEN FRIENDS

'Tilly' Cuts Birthday Cake Marking 94th Anniversary

The rarest person at the Mu Phi Epsilon tea last Sunday, was the guest of honor and only male member—A. B. Tilghabast.

Following the Museum of Art, was the Museum of Art, was the guest of honor and only male member—A. B. Tilghabast. "Tilly" as he is affectionately called, is a member of persons here known to hundreds cut the cake with care strokes cut the cake (which he cut the day before), and by using his 94th birthday (which was the day before), and by using his 94th birthday (which was the day before), and by using his 94th birthday (which was the day before).

Adelaide Van Wey
Folk music stems from the heart. It is simple and sincere, yet its very simplicity causes many concert singers to ignore this medium. Why? Don't they realize that it takes the longest time to realize that, most sincere feeling to project a simple folk melody? They cannot rely on the florid vocal accompaniment of the great settling of the emotional climaxes of the German folksongs, the "Lied" of the French nor the "chanson" of the Spanish. A folk tune requires every resource of the artist. One hears many concert programs and occasionally finds one folk song "thrown" into the fast group—the group to the audience appealing group as a "sop" it emerges as over-enthusiasm. But alas! that has happened often to the original folk music that is ours. The folk music that is ours is the music of great singers, not only on the concert stage but in night clubs, radio, such and Broadway shows. Having medium and universal appeal in so many mediums shows most conclusively the real value of folk music.



ADELAIDE VAN WEY

Three Music Majors To Present Concert Of Original Music

Something new in a literal sense of the word will be offered a Wesleyan audience on the evening of March 7th in Sanborn hall auditorium, when an entire program will be comprised of original music written by three members of the creative composition class of the department of music. Sponsors of the event, which will begin at 8:15 are the three musical societies on the campus; Mu Phi Epsilon, Phi Mu Alpha, and Pi Kappa Lambda.

The composers are all seniors who will graduate in the spring: Marilyn Sidnell, Lakewood, a piano major, will receive both the B. M. and B. A. degrees. She is president of Mu Phi Epsilon and is a member of Pi Kappa Lambda and the Mortar Board. Lenore Pyle of New Castle, Penn., also a piano major is a candidate for the B. M. degree. She is a member of Mu Phi, and serves as pianist for the symphonette. Roberta Shaw, whose home is in Manila, is listed for a B. A. with music (organ) as major. She is a member of Phi Beta Kappa and Mu Phi, and is chapel organist.

Their program, on which all three composers will perform, assisted by Mary Alyn Kuhn and Eleanor Gilchrist, vocalists, and a small A Cappella Choir, has been arranged to include a representative sampling of the various types of music written during the past semester. It will consist of the following numbers:

- I. Group of Songs:
 - "Delusion" (Text by Tzu Yeh; A. D. 265-419) — Roberta Shaw
 - "Theology" (Poem by Dorothy Parker) — Roberta Shaw
 - "The Half Ring Moon" (Poem by John Tab) — Marilyn Sidnell
 - Mary Alys Kuhn
 - II. Suite for Piano: "Phantasmagoria" — Marilyn Sidnell
 - 1. Reverie in Gray (7:00 a. m., Wednesday)
 - 2. Valse Moanette (1:00 a. m., Monday)
 - 3. Sanborn Hall (9:00 a. m., Friday)
 - III. Group of Songs:
 - "Serenade" (Poem by E. C. Pinckney) — Roberta Shaw
 - "The Last Question" (Poem by Dorothy Parker)
 - "The Calico Cat" (Poem by Vachel Lindsay) — Eleanor Gilchrist
 - V. Group for A Cappella Choir:
 - "From Koera": (Texts translated from Korean Folk Songs) — Roberta Shaw
 - 1. Sweet Sixteen
 - 2. Blue Gentian Song
 - 3. Mill Song
- Choir, conducted by Roberta Shaw
V. Suite for Two Pianos — Lenore Pyle
 - 1. Prelude
 - 2. Marche
 - 3. Waltz
 - 4. Finale
 Lenore Pyle and Marilyn Sidnell



MU PI CHAPTER, Ohio Wesleyan University, Delaware, Ohio. Left to right (first row) Barbara Wenger, Lenore Pyle, Betty Parks; (second row) Eleanor Marsh, Phoebe Sears, Marilyn Sidnell, president, Mrs. Robert Bowlus, Kay Kuhn, Dorothy Dull, Peggy Jo Gordon, Nancy Curllis; (third row) Gertrude Beattie, Sara Mae Hoover, Roberta Shaw, Ruth Plak, Lee Irving, Sara Lou Benjamin, Betty Blampied. Members absent from the picture: Eleanor Gilchrist, Marion Hunter, Elva Welday, Connie Conner, Esther Samonte, Rachel Roudeshush, Hazel Stratton.

DeGrassi Plays At Sorority Guest Musicale

Signor Antonio de Grassi, violinist, was featured artist at the annual guest day musicale held by alumnae members of Mu Phi Epsilon, national music sorority, yesterday afternoon at the home of Miss Laura Musto, patroness of San Francisco Alumnae Chapter.

The guest performer, who is also a patron of the sorority, was accompanied in his selections by Isabelle Hesselberg. Piano solos by Alice Redewill Miller were featured on the program, which was arranged by Mrs. Alice Howett. Other entertainment included a special presentation of music inspired by dance forms and illustrated by Julia Rose Phillips, soprano, and a trio comprised of Geraldine Rose, William Lawrence and Maurine Cornell. Patrons and patronesses invited to the affair included Dr. and Mrs. Henry A. Beaudoux, Dr. and Mrs. William E. Kauth, Messrs. and Mesdames Lawrence Washington, Edgar S. Browning, P. Orman Ray, Stanley Hiller, Mesdames Marcus S.: Koshland, Tanja Ury, J. T. Moore, Nora Crow-Winkler, Milton Ray, Antonio de Grassi and Countess.

DeGrassi Plays At Sorority Guest Musicale

The hostess was assisted in arrangements by Mrs. Felix Butler, patroness, and Mesdames Francis H. Redewill, John Kelly and Harry J. McClure. Tea was served to members and guests. Alumnae members of this vicinity include Mesdames Alma Andrews, Lydia Boothby, Arlene Cox, Meta Gordon, Carl F. Jacobson, Arthur Johnson, James McClelland, Stuart McKee, Roy Trogden, Dwight Thornburg, and the Misses E. C. Kirk, Miriam Burton, Rosellen Cornett, Bozina Kalas, Helen Palmer, Frances Robinson, Bernice Rose, Rosalie Speciale, Barbara Standing, Violet Thomas and Meroy Boham.

Seven Are Elected To Mu Phi Epsilon Chapter

Seven new members were elected to the Mu Phi Epsilon, national music sorority and honorarium Thursday. They are as follows: Connie Conner, junior; LeVonne Irving, sophomore; Kay Kuhn, senior; Rachel Roudeshush, senior; Esther Samonte, senior; Hazel Stratton, sophomore; and Barbara Wenger, sophomore. The sorority now boasts a total membership of twenty-five, the most in its history dating from 1925.

After the initiation ceremony reception was held at the Gamma Delta house. Sarah Hoover was in charge of refreshments. The regular meeting time of the organization is the first and third Thursday of every month at 8:00 p. m. The next meeting will be a pledge show given by new initiates. Mr. Keller, head of the music department, will be at the following meeting, on subject, "What to do with a college student." The music group is planning to sponsor the sorority song-fest this year.

National President of Mu Phi Epsilon In Recitals

Ava Conin Case, national president of Mu Phi Epsilon, continues a busy season of touring at the University of Michigan and other engagements. Recently she was heard in recitals at Ann Arbor, both as soloist and accompanist. On March 18 she will present a recital with Hardin Van Duersen. Mrs. Case represented Mu Phi Epsilon at the National Music Council in New York December reporting on her work as chair of the committee on "Music Used to Combat Juvenile Delinquency." She will represent the sorority at the NASM and MTNA meetings in St. Detroit in April. She will install a chapter of Mu Phi Epsilon at Belhaven College, Jackson, Miss., this month.

MUSICAL LEADER



HISTORIANS

Reporting

★ ★ ★ ATLANTIC PROVINCE ★ ★ ★

EPSILON BETA QUEENS COLLEGE

CHARLOTTE, NORTH CAROLINA

ON March 8 in Chambers Auditorium at Queens College, the Mu Phi sponsored a performance of Gilbert and Sullivan's *The Pirates of Penzance* by the combined orchestra and chorus of Queens College and Davidson College. Among Mu Phi in the cast were Betty Barber as Mabel, Doris Turner as Ruth, Travis Wylie as Kate, and Kitty Cooper, Laura Sanford, Margaret Holt, and Joanne MacAuley in the chorus.

New girls pledged to Mu Phi at the end of the first semester were: Joanne MacAuley of Seneca, S. C.; Alice Womack of Charlotte, N. C.; Betty Barber of Savannah, Ga.; Margaret Holt of Savannah, Ga.; Virginia Brosius of Charlotte, N. C.; Gloria Snelling of Lenoir, N. C., and Margaret Peters of Florence, S. C.—CHARLOTTE MAFFITT.

PHI GAMMA PEABODY CONSERVATOY OF MUSIC BALTIMORE, MARYLAND

The holiday season was a busy one for some of our Mu Phi sisters. One of the most outstanding and versatile in our chapter is Catherine Rowe, who conducted the Stewart Employes' Christmas Choir of fifty voices in daily programs throughout December. Recordings were also made for daily use on the radio. A talented singer, Catherine sang for the American Guild of Organists, the British, Methodist, and Goucher Alumni clubs of Baltimore, and the Lions' Club of Kingsport, Tennessee.

On December 17, Mildred Hutchins was guest contralto soloist in Handel's "Messiah" given by the University of New Hampshire Glee Club.

During December Lola Sanders was soloist for the American Society on Public Relations, Willard Hotel; sang the

soprano in Mendelssohn's "Elijah" at St. John's Church, Lafayette Square, Washington, D. C.; appeared as soloist at the annual Christmas pageant and party sponsored by the Y.W.C.A. and on January 3, was presented on the Friday Morning Music Club program.

Rilla Rowe, contralto, sang for the Baltimore chapter of the D.A.R. on December 18 and on January 11 for the Washington Sinfonetta at the Washington Missionary College.

Florence Dorsey conducts her own radio show at Station WITH, Baltimore, five days per week.

Mr. and Mrs. LeRoy Evans were installed as Patron and Patroness of Mu Phi at the Thomas home, Homeland, Baltimore.

Following their annual custom, members of Phi Gamma presented a concert of choral music in the Club House Auditorium of the Maryland Casualty Company, Baltimore, on February 9. Assisting artists, also Mu Phis, were Lillian Dunn, Organist, and Julia Schnebly, pianist. Catherine Rowe was the very capable director.—LOLA SANDERS FAUST.

PSI BUCKNELL UNIVERSITY LEWISBURG, PA.

Psi Chapter is growing not only in membership but in social functions at Bucknell. As a matter of fact we are getting the reputation of being the most active non-social organization on campus.

On January 20 we held initiation for our five pledges, after which the actives presented a program on light opera. Our new initiates are: Barbara Bond, Nancy Derkacy, Odette Hutchison, Ann Kazary (a newlywed!), and Patricia Smith.

The next big event was our Rush Tea on February 23. Invited were all those women students who had one or more of the necessary qualifications. Our pur-

pose was to acquaint the girls with the organization and encourage them to secure all the requirements for membership. We had fun singing some of our favorite Mu Phi songs for them. Miss Melicent Melrose, our faculty advisor, Mrs. Paul Stoltz, an alumna and Mrs. James McClure, a patroness, each gave a short talk on the sorority and Mrs. Harold Easley graciously reigned as hostess for the affair.

On March 3 our initiates gave a fine program entitled "Well-known Love Songs" and treated us with refreshments afterwards.

Dolores Yacos, vice president of Psi Chapter, gave her Senior Recital on March 6. Her program included three German Art Songs, several American folk songs and the lovely but difficult, "Jo Vous Vivre" aria from *Romeo and Juliet*. Almost 100 faculty and students attended!

Dorina Tucey, former Bucknell student and Mu Phi, who has returned in the capacity of piano instructress, recently accompanied her Oberlin roommate in a New York recital.

The most important affair scheduled as yet for this semester will be held in April when we will sponsor our traditional Inter-Sorority Song Contest. The winning group will receive an inscribed plaque as the award.

Greetings to Mu Phi everywhere.—MARCIA HUCKINS.

PHI PSI MARY WASHINGTON COLLEGE OF THE UNIVERSITY OF VIRGINIA FREDERICKSBURG, VIRGINIA

GREETINGS from Phi Psis. We're in the midst of making last-minute preparations to receive eight grand pledgees into our chapter. Plans are being made to have a formal initiation ceremony, followed by a tea to be held in April.

Phi Psi had the privilege of recognizing our patrons and patronesses and presenting a musical program for the February 13, 1947 Convocation. Especially interesting to the audience was "Norwegian Rhapsody," an original composition by Dr. Herman Reichenbach, played by Leland Bailey. Dr. Reichenbach, a member of our faculty, was a judge for the Original Composition Contest.

We're very proud of four seniors in our chapter who were selected to represent our college in *Who's Who of American Colleges and Universities* including Jean Kirby, Sylvia Francis, Irene Taylor, and our president, Nora Bryant.

It is hard for us to express our devotion and appreciation to our faculty advisor, Mrs. Vera Neely Ross. She has been so patient, and understanding that if we had a medal of merit, it would certainly be given to her for being not only a sister, but a mother to our chapter. This past March 2, marked our first anniversary as members of Mu Phi Epsilon; and as we look back on this year we've felt more than once like one of Mu Phi's baby chapters. Yet, all in all, seeing that we have gained such respect and interest on the hill, all our members are looking forward to the completion of a successful and profitable year.—JANE SUMPTER.

BETA NEW ENGLAND CONSERVATORY OF MUSIC BOSTON, MASS.

ELECTION of officers was held at the last regular meeting of Beta Chapter, as follows: Joan Hall, president; Helen Smith, vice president; Cleo Williams, corresponding secretary; Lilla Shaughnessy, recording secretary; Emma Jane West, treasurer; Betty-Lee Holmgren, historian; Dolores Baldyga, warden, Helen Orpen, chorister; Elizavetha Sokoloff, chaplain.

Cleo Williams, music chairman, has announced that the following will perform in the spring concert to be held jointly with Phi Mu Alpha-Sinfonia on April 10: Takouhi Chorbajian, piano; Jean Robinson, organ; Edna Mayer, voice. The joint chorus will sing two numbers, *Exultate Deo* by Mabel Daniels, a Mu Phi sister and *Chorus of Homage* by Gericke.

Betty-Lee Holmgren is to represent New Hampshire, her home state, in the Student Musicians' Audition sponsored by the National Association of Music Clubs. She is to be the soprano soloist in a performance of *Olivet to Calvary* to be given on Good Friday at St. Paul's Church in Concord, N. H.

Lilla Shaughnessy, Mary Spylios, and

Dolores Baldyga are to appear in student recitals at the New England Conservatory of Music soon.

Edna Mayer, who studies voice with Gladys Miller, also a Mu Phi, has been engaged as soprano soloist at the Wellesley Hills Congregational Church. She recently played the part of Rosemaybud in Gilbert & Sullivan's *Ruddigore*, produced by the Peabody Players.

Jean Robinson recently gave her senior recital in organ before a good-sized and enthusiastic audience. Her program included works by Bach, Franck, Widor, Viérne, Sowerby, and Hindemith.

Takouhi Chorbajian was a guest artist at a Musicale at Becker Junior College in Worcester. She played works by Beethoven, Ravel, Chopin, and Brahms.

Virginia Macgown, who is vocalist with Bruce Clark's orchestra, sang recently in Manchester, New Hampshire, and at the annual tea of the Franklin Square House in Boston.

Beta Chapter has planned a musicale for the evening of March 10. Plans are also being made for a pledging ceremony in the near future.—EMMA JANE WEST.

MU

BRENAU COLLEGE,
GAINESVILLE, GA.

ON February 5, the prominent Don Cossack Chorus ended this year's series of concerts presented by the Gainesville Federated Music Club.

Jane Ringo Unhoch and Frances Brown gave a joint voice and piano recital on February 20. Both are alumnae of Mu Chapter. This was the first of the new year's customary faculty recitals. Two other faculty members, Evelyn Crim and Anne Bussey Seigler gave a joint voice recital on March 20. The last of the year was a duo-piano program presented by Patron, Franciszek Zachara, Director of Music, and his assistant Evelyn Baya. This was an outstanding feature of the traditional May Festival. Other musical presentations during the festival, which featured members of Mu Phi Epsilon, included a program of operatic excerpts brilliantly directed by Mme. Marguerite Ringo, head of the voice department; and a concert by the college orchestra, the soloist being

Eliza Holmes Feldman, piano; Mme. Marguerite Ringo, voice, both of whom are alumnae of Mu Phi Epsilon, and Hazel Horton Read, violin, a Mu Phi patroness.

On April 18, a very lovely senior piano recital was given by Nancy Goode, president of Mu Chapter. Nancy is a pupil of Eliza Holmes Feldman, assistant professor of piano.

And so ended another successful year of musical activities on Brenau Campus.—EVELYN BAYA.

BOSTON ALUMNAE

JANE YOUNG DAVIS, who has given recitals in Chicago, Omaha, Evanston, and Cedar Rapids, was heard in a half hour broadcast on Tuesday, February 4, over WANN in Annapolis, Maryland. She played works of Debussy, Schubert, and Chopin.

Our former president, Jerry Stone, has an enviable record. She has been a Mu Phi for 15 years and has been a member of three different chapters. In all that time she has never missed a meeting. We were afraid that she was going to break that record at the February meeting but she arrived in time for refreshments and her record is still unbroken.

Louise Beach Whenman continues to be active in musical circles. Among her engagements recently have been appearances before the Friday Club of Everett and two concerts at the Ring Sanatorium in Arlington.

We met with Beta and Phi Upsilon Chapters at a benefit party for the Sterling Memorial Fund on February 20. The party was held in the Women's Educational Building of Boston University and was a decided success.

Phyllis Knox gave a splendid recital in Jordan Hall on Tuesday, March 4. Her audience was a large and most enthusiastic one.—RUTH ROCKAFELLOW BIRCH.

WASHINGTON, D. C. ALUMNAE

RUTH MORGAN, our program chairman, has made an effort this year to encourage active participation in programs by all of our girls. She divided the membership into nine groups, each group being responsible for one program.

At our January meeting we heard

Jean Heers play a Delius violin sonata with Susannah Armstrong Coleman as accompanist. Berenice Wiers sang a group of her original songs accompanied by Dorothy Sornborger.

A musical quiz program at our February meeting was found to be entertaining as well as educational. Excerpts from folk music, piano, violin, voice, and orchestral scores were performed by Dorothy Guion, Jean Heers, Evelyn Johnson Davis, and Thelma McAdoo. Prizes were given for the highest scores.

We are looking forward to hearing our president, Olive Pratt, play the Schumann "Papillons" in April.

March 16 we are presenting a program at the Y.W.C.A. Featured will be Dorothy Russell Todd, pianist; Anne Haley, soprano, with Leland Bailey, accompanist; Margaret Tolson and Fannie Mae Henbest, duo-pianists; and Jean Heers and Susannah Armstrong Coleman in a Mozart sonata for piano and violin.

We have already pledged one membership to the National Symphony Orchestra and are trying to raise enough money for another sustaining membership. Our girls have always been active supporters of the Symphony. We feel a special interest too, perhaps, because our Sylvia Meyer Gasch is harp soloist with the orchestra.

Sorrow has recently visited Ruth Morgan's home. We extend our sympathy to her for the loss of her husband, Charles G. Morgan.

Dorothy Guion deserves well earned praise for the splendid musical programs she has arranged for the Arts Club of Washington where she is the program chairman this year.

You Mu Phis visiting in Washington, do look us up. We meet the second Monday every month and always welcome visitors.—EVELYN JOHNSON DAVIS.

NEW YORK CITY ALUMNAE

ON December 6 an evening musicale was given for our patrons and friends by the following girls: Eleanor Berger, mezzo-soprano; Vivien Harvey, pianist-composer (Upsilon) and a trio composed of Mildred Hunt Wummer, flutist; Lillian Rehberg, cellist; Evi Iaci, pianist. We were delighted to have as our guests Ruth Row Clutcher, Second

National Vice President and several other members of the Philadelphia Alumnae group.

Programs for our meetings have been beautifully presented by Louise Meiszner, pianist; Jean Cumming, soprano; Merle Mitchell, pianist; Gayle Gilcs, pianist-contralto; Edith Nast, violin; Vivien Harvey, piano; and Helevi Nordstrom, soprano.

It was a treat to hear from Myra Olive of Tau Chapter at our March meeting. She has taught music in Shanghai, China, for a number of years. To our program and tea came Grace Yang, in whose school Myra teaches. They are returning to Shanghai in April.

At this meeting we were happy to add two affiliates to our roll: Edith du Bois Mangum, Sigma, and Muriel Cook, Beta.

Merle Mitchell and Eula Fortner did a wonderful job of directing a chorus of 60 Camp Fire Girls in Christmas programs at the Waldorf-Astoria, Grand Central Station, and the Presbyterian Old Ladies' Home. They are now working on Easter programs.

Ruth Bradley has served faithfully and efficiently as the National Chairman of the "Committee on Music in Hospitals," for the National Federation of Music Clubs. She will conduct two important forums at the Biennial for that organization in Detroit in April.

Beatrice MacGue, too, has made a big contribution to Music in Hospitals. During the past year she has taught singing to 72 men individually in St. Albans Naval Hospital. Some of these men have continued to study after their discharge and make weekly trips to her studio. One man wrote that "your lessons have done more for me than many of the doctors."

We wish space permitted us to tell in detail of some of the splendid things our members are doing but since that isn't permissible we'll boil it down to names and places.

Edith Sunde, soprano, sang for the Dixie Club.

Jean Cumming, soprano, sang for the Kiwanis Installation Dinner, the Century Club Annual Banquet, The Musicians' Club, the D.A.R. 50th Anniversary and Virginia Society Banquet.

Rose Dirman, soprano, was soloist in the Bach St. Matthew Passion.

Doris Frerichs, pianist, appeared in concert in Glen Rock, N. J., and is slated for one in Paterson in April.

Mildred Hunt Wummer, flutist, appeared with the Bach Circle in Town Hall.

Elva Kelsall, contralto, was soloist in the Beethoven Mass with the Philadelphia Symphony.

Mu Phi who appeared on Station WNYC American Music Festival pro-

* * * GREAT LAKES PROVINCE * * *

EPSILON

TOLEDO CONSERVATORY OF MUSIC
TOLEDO, OHIO

SINCE the last issue of the TRIANGLE, Epsilon has held the musical spotlight of Toledo.

First came the chapter concert in the Museum of Art, February 26, which was given by Janet Rankin and Evelyn Wahlgren, pianists, Helen Lease Sloan, soprano, and Florence Fisher Miller, violinist, with Marana Baker and Isabelle Reichert, accompanists. Following the concert, we honored one of our patrons, Mr. A. B. Tillinghast (94 years old) with a Birthday Tea.

Evelyn Wahlgren was heard in her annual recital at the Museum, before a large and appreciative audience. Evelyn began her spring Radio Series for Young Listeners March 4 and will continue for six weeks. Listen in on Tuesdays at 1:45 over WSPD.

Friends of Music presented their last concert in the Chamber Music Series in February and five Mu Phi were featured—Cecile Vashaw, violinist; Marana Baker, Berenice MacNab, Janet Rankin, pianists, and Ethel Kimbell Arndt, conductor of the chorus. Our patroness, Emma Endres Kountz, has been lecturer for the series.

Next came the concert by a selected orchestra from the elementary school orchestras directed by Mathilde Burns. This was the outstanding musical event of the season in school circles, and was given in the Museum.

The most recent civic event in which Mu Phi was prominent was the concert given by the Toledo Choral Society. The accompaniment was played by a double string quartet composed of Florence Fisher Miller, Patricia Sourenne, 1st vi-

grams were: Paula Lenchner, Vivien Harvey, Jean Cumming, Doris Frerichs, Rose Dirman, and Hazel Griggs.

Plans are being made for an April Musicale-Tea, for patrons and friends, at the home of Rose Dirman. The program will be given by Mary Frances Lehnerts, contralto; Doris Frerichs, pianist; Lillian Rehberg, cellist; Rose Dirman, soprano; and a talk by Paul Creston, composer.—GERTRUDE OTTO.

olins; Beatrice Bailey, Virginia Cramer, 2nd violins; Mathilde Burns, Cecile Vashaw, violas; Emily Rairdon Derrer, Elizabeth Walker, cellos. The "Seasons" by Haydn was presented with Mary Willing, patroness of Epsilon, conducting.

February 25 we had a closed program in the home of Ethel Arndt with Virginia Cramer, violinist, Ethel Arndt and Wendene Shoupe, pianists, giving the program. Wendene is a former Tau Alpha member in New York and is now residing in Findlay, Ohio. Another closed program is planned for March with Margaret Strole giving a book review on "Clara Schumann," Joan Bollinger Jones, violinist, and Helen Lease Sloan, soprano.

The final concert for the season will be held in the Museum in May and will feature Marian Wood and Gladys Chisholm, duo-pianists, Elsa Clement, soprano and Patricia Sourenne, violinist.

Our new members, initiated in January, are De Ruth Sage Wright, Marian Wood, Gladys Chisholm, Louise Rowan Wetherill, pianists, and Joan Bollinger Jones, violinist.—GUYNETH REDMAN.

PHI SIGMA DE PAUL UNIVERSITY CHICAGO, ILLINOIS

PHI SIGMA is planning a benefit concert, tea and musicale sometime in May, the proceeds from which will go to Gads Hill Center, our national project. All other chapters are invited.

Along with the concert, Phi Sigma is also giving a Scholarship contest in which violinists from the city and suburban high schools may participate. The winner of this scholarship will be given the opportunity to study violin at De Paul University, under one of our finer teachers for one semester.

Two girls of Phi Sigma have been married recently. They are Eleanor Chester and Julia Vandemur. We extend our wishes for a happy married life.

Rose Therese Schneider, and Lois Andersen, both seniors at De Paul University, will be giving their graduation recitals in May. Rose Therese will give a vocal recital and Lois will give an organ recital.—LOIS ANDERSEN.

SIGMA NORTHWESTERN UNIVERSITY EVANSTON, ILLINOIS

FORMAL rushing for professional sororities at Northwestern has just come to a close, and Sigma has five lovely pledges: Nancy Bacon, Madge Brody, Dorothy Bromann, Thelma Glass, and Janisse Hultgren—all able musicians who should prove a credit to Sigma and Mu Phi. The two rush parties were quite successful, the first held in the lounge of the Georgian Hotel in Evanston, and the second at the home of one of our gracious alums, Helen Purcell Maxwell. Rushing for freshmen will be held in April, so by the end of this quarter Sigma should have a good-sized, active chapter.

Peggy Ausburg gave her senior recital Wednesday, March 5—a fine performance. Her graduation will mean a loss to us, but we wish her lots of luck, and hope she'll continue in an alumnae chapter wherever she goes.

Extracurricular activities are making many demands on our time, but we're proud to have our girls making a good name for themselves and the sorority. The chief activities are: special school productions which require arranging and performing, solo appearances, and church work in and around Evanston. We are especially proud of Millie Drefs, who was just chosen one of the 26 finalists out of 176 auditions for leads in the all-school musical variety show.

We're looking forward to another active quarter, and to reading the news of our sister chapters everywhere.—CATHRYN DETWEILER.

PHI OMICRON WESTERN RESERVE UNIVERSITY CLEVELAND, OHIO

PHI OMICRON Chapter was happy to welcome our National President, Ava

Comin Case, to Cleveland in December. We were sorry her visit was so short and are looking forward to having her with us longer next time she is here.

On February 23 we held a record program in Harkness Chapel. Each of us brought unusual records we owned, and a very different program resulted. The records ranged from Gregorian Chant, a harp recording of several sea chanties, to several modern works.

Eunice Podis presented a program on February 25 for the Kansas City Alum group in the auditorium of the Power and Light Building. It was one of their morning concert series presented to raise money for the scholarship fund. Eunice's program consisted of works by Bach, Chopin, Brahms-Paganini, and a group of modern composers. She reports a wonderful time, including luncheon at a leading hotel, a tour of the city, and a children's concert at the orchestra hall.

On March 13 Phi Omicron entertained our new pledges and the Reserve Chapter of Phi Mu at the home of Janet Fisher. Everyone had such a good time that we are hoping to have more such activities in the future.

Our yearly patrons' program took place on March 23 at the Music School Settlement. Mr. and Mrs. Clement Miller presented two-piano selections, and the program was completed by Gretchen Nobis Garnett, soprano, and Mrs. William Cherubini.—MARGARET GEBERT.

GAMMA UNIVERSITY OF MICHIGAN ANN ARBOR, MICHIGAN

LAST MONTH, at the home of Mrs. Paul R. Kempf, we initiated 16 new members: Joanne Baker, Harriet Boden, Patricia Baumgarten, Betty Estes, Vivian Goldberger, Nell Hocutt, Lisbeth Hildebrandt, Emogene Holland, Helene Jarvis, Anne Massie, Roberta Meyers, Lydia Pekarsky, Genevieve Shanklin, Norma Swinney, Mary Topa, and Joanne Utley. A week later a group of them performed for the chapter at a formal musicale which was held at the home of Mrs. Alexander Ruthven, wife of the President of the University. At that time Mrs. Hickman Price, Jr., Mrs. Albert Logan, and Mrs. Andrew White were installed as patronesses.

Mu Phi has been unusually well represented on the University calendar this term. Recitals have been given by Lynnda Peltz and Kathryn Karch, organists; Jean Morgan, violinist, and Helen Ashley and Jean Farquharson, pianists. Still to be presented are piano recitals by Joanne Baker, Helene Jarvis, and Nancy Marsh, and a voice recital by Barbara Lee Smith.

Doris Gale has been elected President of Gamma to succeed Joanne Ling, who has just left for Houston, Texas.

Our newlyweds, Carolyn and Henry Austin, and Barbara Lee Smith have leading roles in Mozart's "The Marriage of Figaro" which is being given here next week.

Margaret Kimball Wilson, Mu Phi who received her B.M. and M.M. degrees in piano here, has just returned to Buffalo after a brief visit in Ann Arbor.—W. JEAN FARQUHARSON.

MU XI

AMERICAN CONSERVATORY OF MUSIC CHICAGO, ILL.

DUE to an emergency appendectomy, I have been out of touch with my Mu Phi sisters for the past few months and am at a loss to know what to write. However, I will do the best I can.

Lorraine Storz, organist, who will receive her B. M. degree in June, has won the Young Artists' Concert of the Society of American Musicians. She will be presented in a debut recital in Kimball Hall, April 8. Her program will include works of Dupré, Bach, Franck, Parker and Mulet.

Catherine Saurer Smith, former Mu Xi, is playing a recital at Kimball Hall, March 9. Featured in the dual role of pianist-composer, she is performing the Chopin Sonata op. 58, representative works of Franck, Brahms and Liszt, as well as her own Theme, Variations and Toccata.

Frances Phelps managed an operatic puppet show at a carnival sponsored by the Student Association of the American Conservatory. Mu Xis gave forth with their own operatic arias, with amazing range of bass solos to coloratura trills, all of which netted a pretty penny for our treasury.

Elsie Alenius, one of our newest members, played at Miss Robert's advanced

pupils recital in the conservatory Recital Hall. Her most beautiful contribution was the Mendelssohn Violin Concerto.—ADELE TILSON.

MU PHI CHAPTER

BALDWIN-WALLACE COLLEGE BEREA, OHIO

NEW officers for the coming year have been chosen by the Mu Phis of the Baldwin-Wallace Conservatory. They are Norma Boyle, president; Winifred Lindhorst, vice president; Mary K. Friedly, treasurer; Dolores Owen, recording secretary; Hazel Dobbins, corresponding secretary; Nada Pavlovich, social chairman; Martha Carman, chaplain; Jean Vasconi, historian; Gloria Davis, alumnae secretary, and Evelyn Davis, warden.

Highlighting this quarter will be the presentation of two one-act operas—Puccini's "The Cloak" and Menotti's "The Old Maid and the Thief." Both operas are to be given on March 14 and 15 with a double cast in each. Several of our girls have been cast in leading roles: Among them Arlene Ferver, soprano, and Mary Anna Mosher Essel are taking part in both operas. Shirley Bromley, who gave her junior voice recital in February, is doing the role of Miss Todd in "The Old Maid and the Thief." (Shirley, by the way, is leaving us at the close of this term to go back to Wisconsin and head for the altar.)

Jean Churchill, contralto, presented her senior voice recital in February—Jean is now wearing a beautiful diamond. Later this month Delores Owen will give her junior piano recital and Mary Jean Olson Brown, past president of Mu Phi, will present her senior piano recital. Mary Jean is also leaving us at the close of this quarter to join her husband in California. Two joint recitals were given by Arlene Ferver and Mary Jean Brown in Youngstown and Canton, Ohio.

The Mu Phis invited Dr. William Pendell, French professor at Baldwin-Wallace College, to a dinner meeting in February. He spoke about the "French Movements of Literature in the Nineteenth Century and the Corresponding Development of the Art Song." Mrs. Pendell, the former Mary A. Marting, one of our patronesses, sang songs illustrating the trends.

The new actives and pledges of Mu

Phi Epsilon presented a program for the members and patronesses of the sorority. Among the guests were Mrs. Mildred Christian, National Editor of the TRIANGLE, and Mrs. Vera Otto—both former members of our chapter.—JEAN VASCONI.

IOTA ALPHA

CHICAGO MUSICAL COLLEGE CHICAGO, ILL.

IOTA ALPHA has been successful in having a rule passed by the Interfraternal Council for second semester pledging of new students. This has thrown our heaviest "rushing" activities at the beginning of the second semester. Right now we are rushing about twenty girls, and we expect to be able to pledge a good percentage of them.

On February 3, our very loyal and beloved past president, Helen Prunkard, assumed new duties and responsibilities in the division of Music Copyrights at the Library of Congress, Washington, D. C.

Our new president, Ethel Witt, is extremely capable and inspiring. She is a junior, piano major, teaches out in Chicago and in the Preparatory Department at the College. Before coming to Chicago, she had some very valuable teaching experience in the Quinn School of Music, Lakewood, Ohio, with sister Doris Quinn.

The Chicago chapters have been presenting a series of concerts at Gad's Hill this season. Our program will be on March 23, with Phi Sigma. We are also planning an Interchapter Concert for Gad's Hill benefit to be presented sometime in May.

To help increase our scholarship fund, we are selling tickets on a radio which will be raffled off in assembly on March 17, St. Patrick's Day. There will also be benefit to the scholarship fund from the Spring Musicales which we are planning to sponsor the latter part of May.

Many of our girls are active in professional work. Our cellist treasurer, Elsie Gulyanics, is a member of the South Bend, Indiana, Symphony, plays with two ensemble groups and the College Orchestra. She recently played the Saint-Saens concerto in South Bend. Betty Buckley, until a recent fire completely destroyed the puppets and the puppet

theater, was the head puppeteer at the Kungsholm restaurant. Marilyn Hash recently filled a six-week engagement singing in an opera quartette at the "Latin Quarter," one of Chicago's fashionable night clubs. Charlotte Chambers is a member of the staff orchestra at station WLS. I am sure that our new initiate, Joan Jennings, is very well known to you, for she is "Joanne" on the Hour of Charm.—SARA JANE HORNUNG.

CHICAGO ALUMNAE

Two pleasant innovations in our meetings were recently enjoyed: a Christmas party at our president's home, and a White Elephant sale at Elva Gamble's. The latter netted about \$80. One of our girls modeled some of the clothes on sale, giving a modified version of the "strip tease" as each article was sold.

Our Hilda B. Meyne is chairman of the Women's Committee for the Chicago Symphony. Della Vail Borders moved here from Kansas City and is studying cello with Hans Hess. Already playing in a trio with Minnie Jernsberg, violinist, and Octavia Gould, pianist, they were recently presented in a program at the Hyde Park Music Club by the president, Eugenia Wright Anderson.

Our members have made so many concert appearances that space will not permit more than a mention of them.

Blythe Owen appeared before the District Federation of Music Clubs and the Musicians' Club of Women, playing her own composition. Blythe was one of three finalists in a \$1,000 prize contest for an orchestral suite, "State Street," sponsored by Henry H. Lytton, famous merchant and music lover.

Catherine Saurer has given piano recitals in Wisconsin, Indiana and Illinois; played for the Chicago Artists' Association and a recital in Kimball Hall.

Cara Verson, pianist, in recitals through the West and South is featuring the works of American and Latin American composers in her causerie, "Music of the Twentieth Century."

Elva Gamble, soprano, appeared before several music clubs in Chicago and suburbs. Octavia Gould and Grace Holland were accompanists.

Olive June Lacey was recently the featured soloist at the Bryn Mawr Com-

munity Church and was soloist at the Methodist District Convention. Our former president, Marjorie Sherman, and Elva Gamble did a composition by Blythe Owen before the Musician's Club recently, and Ethel Swindel, soprano, appeared at the Arts Club March 10. Ethel is active on the boards of the Lake View Musical Society and the Musicians Club of Women.

Mae Dolling Schmidt, chairman for Illinois in the Federation's drive to collect money for the rebuilding of Queen's Hall in London, recently appeared before the Illinois Federation of Music Clubs' First District Concert. She wrote a rhymed story, "Peace and Harmony Through Music" read throughout the program as the scenes were presented.

Hilda Butler Farr, composer and poet, won a prize on the "Musical Corsage" program, over Station WAIT, for describing her favorite Irving Berlin song, "Always." The corsage will be forthcoming at the Chicago *Tribune* banquet on May 7. Hilda's movie short, "Woman Speaks," had its seventh release in March. One of her late poems was featured in E. V. Durling's column in the *Herald-American*.—JULIET BURKE.

CLEVELAND ALUMNAE

CLEVELAND Alumnae Chapter held its December meeting at the home of Ruth Gill Kaiser. We were delighted to have Ava Comin Case, National President, as our guest. The highlight of the evening was her talk to us of the forthcoming Convention. Affiliated at that meeting were Dorothy Bomgardner, Loraine Merryweather Newhall, and Norine Wines. An informal program of carol singing closed the evening.

Our January hostess was Beatrice Mulian Moore. After a most appetizing dinner a fine program was presented by Viola Petersen, pianist; Marion Pease, violinist, and Garda Metcalf Colvin, soprano. Norma Toole and Lucille Harley were affiliated.

Helen Hannen opened her home for our February meeting. Here the program was given by Norma Toole, soprano, and Lynn Cannon Hunston and Virginia Richards Mitchell, duo pianists. Much of the business discussion of these last meetings has been devoted to the planning of a successful 1948 Mu Phi Convention.—ROYAL SHIELDS BROWN.

TOLEDO ALUMNAE

Greetings to all our sisters new and old!

Although we all realize that we could spend full time on just one of our year's programs, we have enjoyed each of them immensely when they were given. Our last one consisted of the study of Siegfried—Die Götterdämmerung & Parsifal—given in May. With so much to cover, we don't have much time to chatter; but we do plenty of talking at the lunch table which precedes the program.

This year we are charging 50 cents each for our luncheons. This, with our soap sales, is taking the place of our annual rummage sale to make money for the sorority.

Our group has been smaller since the first of the year. Georgia Blair and Hortense Heinle have been in the South for several months and Edna Miller's mother has been ill, which has prevented her from being with us. Have a grand vacation, everyone!—FLORENCE MILLER CRAMER.

ANN ARBOR ALUMNAE

Our Christmas meeting was held at the home of Sarah Kilgour at which time we celebrated the season with jolly musical skits and ended with carols. Co-hostesses were Helen Titus and Marjorie Miller.

A large crowd turned out to hear Ava Comin Case play at the January meeting in the home of Florence Small. It is always an event when Ava plays, and this occasion proved that only Ava, who is master of other arts besides music, could toss off Appassionata Sonata in so brilliant a fashion. Assisting hostesses were Dorothy Paton and Mildred Webber.

This is a red letter year for programs in our chapter. In February, Marian Owen, pianist, and Dorothy Feldman, soprano, gave a most stunning program for us at the delightful home of Mayme Worley. Mary Stubbins and Ethel Shanklin assisted Mayme that evening. Marian will be long remembered for her Master's recital last spring, when she played Medtner, Poulenc and Debussy with great style and finish. Dorothy sang Bach, a Mozart Motet and a Brahms group with her usual artistic interpretation and fine feeling.

These performers are in great demand in Ann Arbor. Ava and Dorothy gave a program recently for the music section of the Faculty Women's Club of the University, and Marian played at a benefit performance in Mt. Clemens.

Our music in hospitals continues with Alta Muehlig entertaining generously with her accordion. Alta has a tremendous repertoire and never fails to learn any new number requested by the boys. Her many experiences are varied. She indeed deserves a medal!

Our chapter greatly misses Nadine Flinders who has left to join her husband in China. Constance Hackett is going over the top with the magazine subscriptions. At our last meeting she read a note from headquarters stating we were the champions of the Great Lakes Province.

To assist the active chapter seven of our members gave a supper at Edith Kempf's in honor of the new initiates. Hostesses were Louise Cuyler, Constance Hackett, Thelma Lewis, Margaret Matteson, Marguerite Fairchild, and Mildred Wilson.—FRANCES THROOP.

DETROIT ALUMNAE

This chapter was happy to have talented Rose Dirman in Detroit on November 15 when she was soloist at Pro Musica's first recital of the year in the Institute of Arts. On that day she was our guest at a delightful luncheon in the Rackham Building.

* * * EAST CENTRAL PROVINCE * * *

KAPPA

ARTHUR JORDAN SCHOOL OF MUSIC
INDIANAPOLIS, INDIANA

We have been rather busy this season. Last December 3, 1946, we had the pledging of five girls: Mary Louise Masters, Marjorie Morrison, Doris O'Dell, Helen Schimkat, and Betty Wales. Nancy Carlson sang and a two-piano selection was given by Mae Engle and Mary Feketa. This meeting was held at the Student Hall.

December 10, 1946, was our Noël Fest. It was held with the other musical organizations at school in the North Methodist Church. This included an excellent dinner.

January 7, 1947, was the date of our

Kay Green, program chairman, has given us enjoyable music programs for six of the past nine meetings. The most recent was at the home of our chapter president, Doris Houghton, when Beth Shafe pleased us with her cello solos, Ellen Jones sang three beautiful songs and Kay Green played the Debussy numbers which she performed so well on the Tuesday Musicales program of January 21. Three visiting Mu Phis were with us at this meeting: Florence Howell of Buffalo, Dorothy Hall Hughes of Glendale, California, and Mary Lee Elison, former Toledo resident.

Ruth Dayer is chairman of the Tuesday Musicales nominating committee. Lucy Hicks is secretary in the Wayne University Alumni office. Beth Shafe was cello soloist on the March 4 Tuesday Musicales program.

The St. Joseph Episcopal Church choir is sponsoring a recital on March 27 with Kay Green pianist and Helen Horne, coloratura soprano.

Doris Houghton will play piano and also solo-vox on the Rochester Tuesday Musicales program of March 18. Marian Jewell has been soprano soloist in cantatas and oratorios for the Sunday evening vesper service at Cranbrook Christ Church.

Plans are being made for a dinner, April 24, at the Statler Hotel for all Mu Phis attending the National Federation of Music Clubs' Biennial Convention.—BERTHA BERGMAN SOBESKY.

Public Recital given in the Odeon. Gertrude Irestone opened the program with two organ numbers. Virginia Pearson played two selections on the French Horn accompanied by Mae Engle. The third performer was Barbara Bailey, contralto, who gave a group of four songs. Joanne Viellieu was her accompanist. Dorothy Munger closed our program with one movement of a concerto by Rachmaninov. Waneta Reed was at the second piano.

February 4, 1947, we had the installation of officers who are as follows: President, Joanne Viellieu; Vice President, Evelyn Piel; Treasurer, Joan McCord; Recording Secretary, Mary Ann Jamison; Corresponding Secretary, Waneta Reed;

Historian, Martha Hodshire; Alumnae Secretary, Melva Shull; Warden, Martha Metcalf; Chaplain, Barbara Bailey; and Chorister, Mary Fekete. The picture for the yearbook was taken. Evelyn Piel and Gertrude Irestone played organ selections for us.

Barbara Bailey, accompanied by Joanne Vielleiu, sang at the afternoon session of the Indiana Federation of Music Clubs, March 4, 1947. March 11, 1947, we are planning to hold the pledging of new girls in the Student Hall. We are now eagerly anticipating April 11, 1947—for on that date we are to be hostesses for the North Central Music Educators' Conference. All in all it has been a good year and promises to continue that way.—**MARTHA HODSHIRE.**

MU EPSILON

MACPHAIL SCHOOL OF MUSIC
MINNEAPOLIS, MINN.

SOON after our last letter, Mu Epsilon girls found themselves deep in holiday plans for two children who are bed patients at nearby Glen Lake Sanitarium. Selecting gifts and cards to make their Christmas a merry one added a full measure of joy to our own.

At present we are all culling over our old music in preparation for a rummage sale that Margaret Stableski is planning. The proceeds are to go into our Music in Hospitals fund.

We all miss Marian Anderson Horak, who recently moved to Dallas, Texas.

We have just completed a very successful rushing season, which reached its climax at the home of Mrs. DeForest Spencer. There we were very happy to initiate the following patron and patronesses: Mr. and Mrs. John McKay, Mrs. Leland Stanford Duxbury, and Mrs. Stanley Hawks. In the near future we are planning an initiation for two new members and a pledge service for four.

This is a very busy season for the students in our chapter. Thelma Jacobson, Charlotte Wharton, Mary Ann Simard are preparing spring recitals, and the following will be heard on the commencement program: Mary Ann Simard, Thelma Jacobson, Marilyn Norman.—**AVISMERI MACGAFFEY.**

MU OMICRON COLLEGE OF MUSIC CINCINNATI, OHIO

IN January, Mu Omicron Chapter began its new year with a most enjoyable meeting at the home of Erma Davis. This meeting was called for the election of new officers for the coming term. Election results were: Gertrude Jacobs, president; Myrtle Whitehead, vice president, and Margaret Thueneman, Chorister.

Doris Wulff, President of Mu Omicron, entertained at her home in February, at which time the formal initiation ceremonies took place.

The new initiates were: Margariete Remark, Wilma Rahning, Wilma Lewis, Ruth Young, Tabiatha Robbins, Lucile Patronis.

February 28 marked the outstanding event of the month: A joint meeting and Musicales with Upsilon Chapter was held at the home of Mu Omicron's patron and Alumnae Club's member, Mr. and Mrs. Sigmund Efron. Preceding the Musicales, Mu Omicron installed Miss Norma Richter and Mr. Alfred E. Rose as patrons. Arlene Rodenberg and Elaine Ritter were chosen as new pledges.

The installation of new officers will be held at the home of Helen Witt in Wyoming, March 23.—**BETTY HOENSCH.**

MU ALPHA SIMPSON COLLEGE INDIANOLA, IOWA

INITIATION in January brought Mary Ecroyd, Shirley Duckett, Dorothy Henderson and Ruth McClennan into active membership. Their interest and cooperation in our activities have brought an awareness of Mu Phi to the Simpson campus, which is a credit to the Chapter. A recent program presented at Chapel was outstanding.

In January a prospective Mu Alpha member arrived at the home of Leona and John Wilkins in the form of a daughter, Cynthia Beth. "Lindy" is our efficient secretary, who represented our Chapter at the National Convention in New York last summer.

Three of our girls are soon to present their Senior recitals: Jean Liggett, our President, in voice; Belva Harper, piano,

and Mary Lou Boyles, piano and part of a voice recital. Gwendoline Frame presented her piano recital on January 27. We are proud of the fine work they are doing.—**HELEN SOLBERG SMITH.**

PHI RHO MINNEAPOLIS COLLEGE OF MUSIC MINNEAPOLIS, MINNESOTA

HELLO THERE! Our first major event since our last letter was the orchestral concert given November 5, in the college auditorium. Ruth Havlik, pianist, and Judith Dudley and Virginia Lull, vocalists, gave excellent performances.

December 3, Phi Rho gave a recital featuring Mae Detert, soprano, Therese Ryan, pianist, and Peggy Ramstad, accompanist.

Ruth Havlik was accompanist for contra-bass player Radivoj Lah of the Minneapolis Symphony Orchestra, in his recital, January 14. Peggy Ramstad, pianist, gave a group of numbers in an all-Schumann concert, January 28.

Marilyn Alm gained valuable experience and had an interesting and exciting time when she was accompanist for John Gurney, baritone, on his five-week mid-western tour.

Our new officers were installed in ceremonies given in the college auditorium, February 11. They include: Mae Detert, president; Hyldred Nelson, vice president; Therese Ryan, treasurer; Connie Sullivan, corresponding secretary; Judith Dudley, recording secretary; Peggy Ramstad, historian; Elsie Kwakernaat, chaplain; and Ottila Dorr, warden. We want to wish them success in directing the activities of our chapter in the coming year.—**PEGGY RAMSTAD.**

PHI THETA LINDENWOOD COLLEGE ST. CHARLES, MISSOURI

THE December meeting of Phi Theta Chapter consisted of a violin recital by Alice Gene Beardsley, a new pledge. In January we had a study of German baroque opera, while in February we enjoyed an interesting discussion of the composer, Roy Harris.

The annual party for our patrons and patronesses was given February 10. For the program, Dr. Homer Clevenger, history professor, compared Germany during the Hitler regime to America of the

same era. Music written during the same period was played to show the influence of historical events upon the fine arts.

Receptions have been held for the campus guest artists, Leonard Pennario and Ruth Posselt.

Recently two of our members, Barbara Ann Little and Lucette Stumberg, played piano concertos with the Lindenwood College Orchestra. Lucette played the Brahms' Concerto in B \flat Major, No. 2, while Barbara Ann played the Beethoven Concerto in C Major, No. 1—**BARBARA ANN LITTLE.**

DES MOINES ALUMNAE

DES MOINES Alumnae are enjoying a busy and successful year. An interesting and varied musicale was presented in the Drake University Auditorium to a large audience earlier in the year.

Also the club sponsored a concert by duo-pianists Whittemore and Lowe at Hoyt Sherman Place, for the scholarship fund. Yearly, three \$100 scholarships in the Drake School of Fine Arts, are awarded by Mu Phi to the winners of contest auditions. This year, two of the awards were won by Mu Phis: Lois Fish, cellist, and Nancy Cook, pianist. The third winner was Douglas Bredt, vocalist. Thirty-two contestants were auditioned and we feel this was the finest contest we have ever had.

The alumnae chapter also awards a \$15 prize to the sophomore having the highest scholastic average. Practical encouragement of scholarship and musicianship is surely very worthwhile.

Our programs for meetings have been planned on music from different countries. At present, "white elephant" sales to aid our budget have added to the fun of two regular meeting nights. Plans are under way for the Silver Tea for the Sterling Memorial Fund in April, and for three rushing parties this spring.—**MAYME LYONS.**

CINCINNATI ALUMNAE

As the year progresses, we find our members busy with both Mu Phi activities and the various offerings of Cincinnati's musical season. We are group subscribers to the concerts of the Cincinnati Symphony Orchestra. The names of many of our sisters will be found on

the membership lists of different cultural organizations of our city. Two of our members have been honored recently: Etelka Evans, former editor of THE TRIANGLE, was elected president of the Southwest District of the Ohio Federation of Music Clubs, while the former assistant editor, Bertha Krehbiel, is the new president of the local Woman's Music Club. Our group has contributed to the following funds during the past year: The Ann Gannett Scholarship Fund, The State Fund for Wounded Veterans, The Edgar Stillman Kelley Scholarship, and, of course, our own Mu Phi project—Music in the Hospitals.—BABETTE EFFRON.

INDIANAPOLIS ALUMNAE

THE Indianapolis Alumnae Chapter celebrated Founders' Day with Kappa Chapter, the Patroness Club, and members of Zeta Chapter at DePauw University, with a lovely dinner on November 13, 1946, at the Propylaeum Club. Initiation was held before the dinner for four initiates, who presented a program following the dinner.

Our Christmas meeting was held at the home of Dorothy Test Hiatt and was outstanding in every way. Following a delicious dinner, Helen Quig presented a program entitled "Carols at Christmas" featuring some beautiful and seldom heard carols, and ending with the old Moravian custom of presenting everyone with a lighted candle. The social committee passed out holly corsages to everyone, and the exchange of gifts was cleverly carried out by using phrases from "Jingle Bells," "Deck the Halls" and other Christmas songs.

The January meeting was held at the home of Maude Essex Titus, featuring a dinner followed by a program given by Ann Mathews, harpist, Lorinda Cottingham Howell, violinist, and Elsie Stefan, pianist, one of the new initiates.

Irma Christena Judd was hostess for the February dinner meeting. A delightful book review, "From the Top of the Stairs," by Finletter, was given by Helen Talge Brown.

The March meeting was held at the home of Pearl Munday Dedert, and the program was given by Jessamine Barkley Fitch, soprano; Marjorie VonStad-

en Bernat, cellist, and Ernestine Fleming, pianist.

We are exceedingly proud of our outstanding member, Jane Johnson Burroughs, soprano, who has been giving a series of three song recitals in the ballroom of the Marott Hotel. In her January program she sang early English, German, French and contemporary English compositions in addition to a Wagnerian aria. Her final recital, March 23, will include groups of songs by Donaudy, Griffes, Debussy, Strauss and Rachmaninoff.

We are planning a guest tea in May, which is an annual event of the chapter, and one toward which everyone looks with pleasure.—LORINDA COTTINGHAM HOWELL.

ST. PAUL ALUMNAE

IN looking back on this past winter St. Paul Alumnae Chapter has been busy. We started our fall with a fine report of the convention given us by our Minneapolis alumnae representative, Lucille O'Connell.

One of our loveliest and happiest times was the joint Twin City Founders' Day tea held at the College of St. Catherine. The program was varied with both alumnae and active chapters represented. Mrs. George Darrell of St. Paul was installed as a patroness at this time.

We entertained our husbands and patronesses at a Christmas party at the home of Julie McGregor. Julie, Dorothy Nieman, Clementine Gifford and Ann Gallogly gave us a fine program after a very sumptuous supper. Our fun for the evening was a Treasure Auction at which we made sixty-five dollars to further our local project, the lending library of orchestra scores for the St. Paul Public Schools.

In January our patronesses gave us a most enjoyable evening both in program and get-acquainted time. March 11, we are going to entertain active chapters and alumnae from Minneapolis at a brunch at Charlotte McCallum's.

Several of our members have appeared as artists during the year: Dorothy Nieman, Julie McGregor, Clementine Gifford, Ann Gallogly, Harriet Allen, Doris Stickney, Odelia Erdos, and Irma Wheelock.

We plan to appear on the Twin City Quiz again in April. Last April our good representatives earned us ninety dollars with their brightness, and added a large boost to our lending library. Substantial contributions have been made to Gads Hill, Music in Hospitals and the Red Cross.

Plans are being made for our spring musical and tea to be held at the home of one of our patronesses, Mrs. Edgar D. Russel, with both alumnae actives and patronesses performing.—MARGUERITTE GOUDE MEYER.

ST. LOUIS ALUMNAE

ST. LOUIS has been host to the Music Teachers National Association Convention. The Mu Phi luncheon in charge of Helen Babcock was a happy occasion for our Alumnae and Theta Chapter. Mabel Henderson presided, and it was a real inspiration to meet our sister Mu Phis from all over the country. Ava Comin Case, our National President; Hazel Nohavac Morgan, Mrs. Crosby Adams, Mrs. James Quarles, Kay Anderson, National Convention Chairman; Mary Craig, an Associate Editor of *Musical Courier*, were among our honored guests.

On February 10, the St. Louis Alumnae joined Theta in an evening musical and reception for Sigma Alpha Iota at Adelaide Adam's home.

The spaghetti supper at Irene Chambers was really fun, as our husbands contributed much to the program which Lucille Gewinner planned.

Our morning Lenten Musicals began Monday with a delightful program by Lucille Gewinner, pianist; Charlotte Stockton, violinist; Pauline Baker, contralto, accompanied by her daughter, Elizabeth Buck.

On March 17, Ruth Johnson will be the narrator for a sketch written by Ruth and Ellen Graf entitled, "The Eternal Feminine." The program will be in costume.

The last concert on March 31 will consist of violin and harp, cello, and an a cappella choir, with music in accord with Holy Week.

The regular programs have been interesting, and we are looking forward to book review on "Diaries of Tschai-kowsky," "Life and Background of a

Society Composer," and Belle Brickley is going to give us the "Latest Developments in Boogie Woogie."

The closing program will be an exchange with Theta.—IRENE PAGE CHAMBERS.

MINNEAPOLIS ALUMNAE

MINNEAPOLIS Alumnae Chapter sends greetings to all its music friends everywhere and particularly to those who might have been one of our members. We have had excellent attendance at our meetings and due to the diligent work of our Program Chairman we have been privileged to enjoy some fine programs.

On April 7, four representatives from our Chapter will compete with four representatives from the St. Paul Chapter on the radio program "The Quizz of the Twin Cities." Not only does it give us an opportunity to match wits with the St. Paul Chapter but it also helps swell our bank account providing we know the right answers. After the broadcast we are being entertained by Phi Beta in the first of our exchange programs, with members of our Alumnae group furnishing the musical program. Those performing are Maude Mantz, violinist, with Marian Kemerer, accompanist; Avonelle Poehler, pianist; and Jennie Westling will entertain us with her Clavichord. Virginia Shaw, Mu Epsilon, will sing two of Elizabeth Griebnow's original compositions.

We are anticipating with pleasure a luncheon on March 11 at Charlotte MacCullum's when we are to be guests of the St. Paul Alumnae Chapter.

Among our philanthropies this year has been our annual contribution to the Minneapolis Symphony Orchestra Fund and our main project, "Music in Hospitals." Our President, Lucille O'Connell, and Elizabeth Griebenow have devoted a great deal of time and effort investigating needs musically in our hospitals. We have bought records and sheet music for the Veterans Hospitals in Minneapolis and St. Cloud, Minnesota, and also furnished vocal talent for the Sunday church service at the Minneapolis Veterans Hospital. We are also contributing to the National "Music in Hospitals" project.

Because of ill health, Karleen Fiscner has found she can no longer take an

active part in our group this year. We sincerely hope she will be able to rejoin us again in the fall. Minneapolis Mu Phis are happy to welcome Frances Cole, who comes to us from the Washington Alumnae Chapter.—HAZEL LEVERSON PERCY.

EVANSVILLE ALUMNAE CLUB

THE Evansville Alumnae Club has had several very interesting meetings this year. On Founders' Day we had the pleasure of having Mabel Henderson with us. Everyone came with a "bundle" which, when put together, made up a most delicious buffet supper. Eugenia Cash Beasley, our hostess, played a lovely program of piano music. We certainly enjoyed having Mabel with us and hope she'll come again—but soon!

Maurine Bailey Taylor and Alberta Bromm were in charge of the October meeting which was held at Maryland Hartloff Blackburn's home. The program was listed in the paper very professionally as "Instrumental Ensembles." But to us it was an evening of hilarious fun, each of us using an unfamiliar instrument.

We also remember pleasantly an evening spent as guests of the Evansville S.A.I.s at a buffet supper in October. They, too, have a small group; it's always fun to join forces.

Maryland Blackburn had the program for December. After several "brain twister" quizzes we had a carol sing.

Mary Stratton Legeman and Rossana McGinnis Enlow presented a lovely two-piano program at our January meeting and Muriel Oeth was in charge of the February meeting, at which time she gave a most interesting and enlightening talk on Debussy, his works and their interpretations. Muriel comes to us from Kappa where she is still an active member since she was initiated this fall.

Our March meeting is to be given by

* * * WEST CENTRAL PROVINCE * * *

MU THETA EPSILON
UNIVERSITY OF TEXAS
AUSTIN, TEXAS

MU THETA EPSILON is very proud of its members' outstanding accomplishments. Evelyn Busby won the National

Louise Wells Richardson, vocalist, and Alberta Bromm, organist.

Rossanna Enlow and her Awards Committee are busy contacting our high schools, getting the names of girls who wish to try out for the Mu Phi award. This will be the second annual award of its kind, an award to the most outstanding senior girl in the music department of each of the public high schools. All four of last year's winners are enrolled in colleges, one in a school which boasts a Mu Phi chapter. (And she tells us she's keeping up her Mu Phi average!)

We are quite proud to have Mary Stratton Legeman, our president, and Rossana McGinnis Enlow on the board of directors of the Evansville Musicians' Club. Mary is sponsor of the Junior Musicians' Club, a branch of the larger group for high school students. Louise Wells Richardson is assistant of the latter named group.

We are also proud of our Mu Phi children. Wells Richardson, Louise's son, is drum major of the Bosse High School band and also plays flute in that organization. Beverly Keefe, daughter of Maurine Taylor, plays violin in the Bosse orchestra and viola in the Evansville Philharmonic Orchestra—Maurine is principal of the second violin section of the latter group.

Also, Kathryn Gilb Huisman and Maurine Taylor are members of the faculty of Evansville College. Also in the Honors Department is Maryland Blackburn, who was this year made East Central Province chairman of the Mu Phi magazine project.

We are still a small group, having only eight members since we lost Vievia Hoelscher Chrisman to California. Vievia's husband, Lee, a Phi Mu by the way, is teaching at California State University. Our loss is California's gain!

Greetings and best wishes to all from the Evansville Mu Phi Alums.—ALBERTA BROMM.

Mu Phi Composition Award with her suite for piano; a former member of our chapter, Mildred Novit, received honorable mention for the H.H.A. Beach award; and Betty Jane Steele won the Young Artist Contest, sponsored by the

Austin Symphony Orchestra and will appear as their guest soloist in April.

Betty Hill, one of our spring pledges, received the vocal award in the Young Artist Contest and will also appear with the Austin Symphony in April. Other promising pledges include: Katherine Cain, Doris Freudiger, Jean Short, and Laura Lee Green.

In cooperation with the other Texas Chapters of Mu Phi, Mu Theta participated in a most interesting program held at Baylor University.

In order to promote greater interest in meetings, our chapter has had faculty members, who have concertized, speak of their experiences and give valuable information about performance.—LOIS ZABEL.

PHI PHI
UNIVERSITY OF KANSAS CITY
KANSAS CITY, MISSOURI

OF all the interesting things that happened to us the most exciting was the marriage of our faculty adviser, Della Willson, now Mrs. William G. Chester. The only sad aspect to this situation was that she deserted us to live in Baltimore, Md.

One of our achievements has been to cooperate in the establishment of the required Panhellenic Council on the University campus. This is composed of representatives from Mu Phi Epsilon, Sigma Alpha Iota, and two law sororities, Kappa Beta Pi, and Phi Delta Delta. Our own Maree Murlin was elected first President of this Council, at its first meeting on November 18.

Our next achievement was to pledge and initiate Virginia Voightlander, a promising young artist of Kansas City. She has been awarded a fellowship at Julliard School of Music in New York. She was featured with the Kansas City Philharmonic Orchestra on December 22 in a concert.

Our latest achievement has been the rushing and pledging of ten new girls from the University campus.—JACQUELINE G. MILLER.

XI
UNIVERSITY OF KANSAS
LAWRENCE, KANSAS

On February 16, Xi Chapter presented a variety program at the Winter

General Hospital in Topeka, Kansas. It was a program for the closed ward patients only. According to those in charge of special services, the response was unusually good and we were asked to return in March. A small group of the girls serenaded in the wards, and the patients seemed so grateful. We felt rewarded for our efforts. In our way, we felt we were helping those who at present cannot help themselves.

On April 11 we are planning an all-day outing to towns in this vicinity where our former Mu Phis are teaching. This will be fun and we look forward to it as one of the main events of the spring. Another important date on our calendar will be the annual Mu Phi vespers for the entire Fine Arts School.

Marjean Carr, president of Xi Chapter, presented the first piano recital of the season on March 2. As has always been the custom, the Mu Phis sat together in the front of the auditorium. The program included compositions by Bach, Beethoven, Brahms, Chopin, Tansman, Debussy and Franck.—MARJEAN CARR.

PHI IOTA
CONCORDIA COLLEGE
MOORHEAD, MINNESOTA

PHI IOTA CHAPTER has been very active this year in the promotion of special projects.

A Music in Hospitals benefit program was given March 18 under the direction of Viola Anderson, national chairman of Music in Hospitals, and Maude Wenck.

The number of scholarships to be given to outstanding music students of Concordia has been raised to five, and the amount of the awards has also been increased. Henceforth, the freshman and sophomore awards will be \$15 and \$25, respectively. The junior award of \$50 has been named the Hildur Lavine Shaw Junior Scholarship, after our own national vice president. Another award of \$100 will be given annually to an outstanding music student. To the music valedictorian of the senior class the chapter gives annually the Mu Phi Epsilon Medal.

Projects are under way for raising money toward a chapter room in the proposed music building at Concordia.

A convocation program was given in

April in the college chapel by Phi Iota members.

Phi Iota sponsored Dorothy Mae Gilbertson, accompanied by Delores Kron McDonald, in a public concert in February, and is sponsoring Lois McKenzie, contralto, in the North Dakota State Federation of Music Clubs, Young Artists Division.

Several of our members sang in the Concordia College Choir which appeared in such cities as Milwaukee, Chicago, and Minneapolis in its recent tour of Minnesota, Wisconsin, and Illinois.

We hear regularly from Estelle Johnson, Concordia graduate of 1946, who is now studying voice in London under Maggie Teyte.—MARINDA THOMPSON.

MU DELTA

CONSERVATORY OF MUSIC KANSAS CITY, MISSOURI

MU DELTA CHAPTER has just had a sweeping victory in that every bid sent the second semester was accepted.

We are extremely proud of our new pledges for they represent the most outstanding freshman girls. They are Martha Calman, Joan Potter, June McWhorter, Juanita Coy, Emma Low Diemer, and Mary Guinta.

On March 15, we will have initiation services for six girls who pledged Mu Phi during the first semester. This will be held at the beautiful home of Marie McCune.

On Feb. 25, Mu Phi Epsilon in Kansas City presented Eunice Podis in a fine concert on our scholarship series. This was followed by luncheon. The group also had a delightful dinner honoring Paula Lenchner who sang with the Kansas City Philharmonic in January.

Emalie Koetting has been elected president of Mu Delta, succeeding Mary Kate Parker. Installation ceremony will be held on March 13.

Our final Musicale will be the presentation of Mozart's comic opera, "The Impresario," conducted by David Van Vactor and directed by Gladys Cranton. The Allied Arts Orchestra will assist in what promises to be a fine climax to this year's series.—MARY KATE PARKER for (V.J.D.).

DENVER ALUMNAE

THE Denver Alumnae Chapter has had a busy year. Ruby Nedges, our

President and harpist, went to Pueblo to play with Cavallo who conducts the Pueblo Civic Symphony for the premiere performance of Braggiotti's "Pianorama." Raffaello Cavallo, by the way, is mentioned in Gene Fowler's new book, "Solo in Tom-Toms."

Janet Fee, our songbird at KOA, was vocal soloist with the Denver Symphony in a Twilight concert on Sunday afternoon. She is a new member of our chapter and we are so proud to have her.

Our girls have been giving concerts regularly at Fitzsimons hospital. Last month, Ruby Hedges, harpist; Rosella Hinton, cellist, and Janet Fee, vocalist, gave a lovely program out there.

Joyce Sadler Orr, pianist, gave a fine program for the Alliance Francaise this month, and she also plays for the dinner hour every Sunday evening at Cherry Hills Country Club.

Violette McCarthy, vocalist, gave a program of modern music for the Musicians Society accompanied by Gladys Kendall. In February Gladys gave a program of piano compositions for the Lions Club of Denver at their noon luncheon. We are very proud of Ferne Heiny and her work with the deaf and dumb children in the public schools.

Our Founders' Day program was a very outstanding one. One of its highlights was having Orah Lambke with us. She told us all about the beginning of Mu Phi. We have been very privileged and honored to have Orah with us all this winter while she is visiting her brother.

The Denver Music Council has honored us. We are asked to act as chairman for a series of programs to be given twice a month at Ft. Logan for the World War I soldiers.

Ada Bloedorn is the President of the Music Teachers Association. There are about 150 members in this new group which combines the State and Denver.

We are planning another one of our Annual Spring Musicale Teas to be given around Easter time. We always have this one big project which brings our chapter before the public and also, being a silver offering Tea, helps the finance department.—BERNICE JACKSON.

OKLAHOMA CITY ALUMNAE CLUB

THE January meeting of the Oklahoma City Alumnae Club of Mu Phi Epsilon was held in the beautiful new studio of Minneletha White who recently returned to live and teach in Oklahoma City after years of coaching for M.G.M. in Hollywood. The program consisted of the achievements of Helen Traubel relived in a bit of research by Mildred Shaughnessy.

In February, Grace Frank permitted us to use her new Hammond organ, at which time, Mary Haley, Grace, and Joy Wimber presented a fine program of organ works ranging from the classics to modern compositions. Aside from her position as organist at the First Presbyterian Church, Grace is very active in many organizations. On March 23 she will play on the initial program of the State Federation of Music Clubs.

Mary Haley is Secretary of the Organists' Guild and plays for the Chapel services at Tinker Field.

In the early winter, Elizabeth Lindquist was asked to play the dedication service for the new organ installed in the Methodist Church in Purcell, Okla. Since then she teaches and directs the choir there.

Our President, Hettie Baum, was active recently in collecting funds for the new Y.M.C.A. As a hobby she is selling real estate; but is finding time to sing for the White Breakfast at the Federation of Music Clubs' Convention, March 25.

We have been blessed by the acquisition of a live wire in the person of Minnie Martin Howe of Mu Nu Chapter. Her daughter is enrolled in our State University and Minnie is affiliated with both the Active Chapter and the Alumnae Club.

April brings our own Merle Montgomery back to us. She is touring the States lecturing on "The Shiller Method of Composition." Merle will entertain us at a Guest Night so old friends may see and hear her again.

Ruth Petty, Lambda Chapter, formerly of Wewoka, has become one of us and will play several violin solos on our Guest Night program.

Since I am Secretary of the State

Music Teachers' Association and have just finished the State Convention, I shall now rest my pen.—MILDRED SHAUGHNESSY.

LINCOLN ALUMNAE CLUB

THIS is truly "The End of a Perfect Day"—A bit weary, but happy. With the assistance of Marjorie Shanafelt and Altinus Tullis, yours truly entertained twenty-seven loyal Mu Phi sisters with a dessert luncheon.

Can you hear us singing THE TRIANGLE? Louise Philbrick (Mrs. C. R.), a newcomer to Lincoln and our patroness presented a lovely group of songs. We also enjoyed talented Arline and Charline Shepperd with Charma Davis as accompanist from Mu Gamma and an artist paper by Irene Barber.

Several of our inactive girls were here—Ruth Dennison, mother of two kiddies, finds time to serve as Organist-Director of the choir in the Second Baptist Church; Edna McConnell, a lovely pianist, is a secretary to a prominent attorney; Leona Williams is secretary to Chancellor Knight of Wesleyan University; Mildred Shannon is Supervisor of Music in Burchard, Nebr., schools; Irene Faulhaber, a homemaker with one son, finds time to serve as an accompanist for several singers; proving that busy homemakers and career girls can share their talents.

Our Beth Miller is spending a few weeks in New York. Following the Mu Phi program on Sunday, March 30, we plan to entertain our active girls and nine wonderful pledges with a buffet supper in the home of Charlotte Hummel. We are also planning our Annual Guest Musicale in April.—PANSY N. SCHLEGEL.

TULSA ALUMNAE CLUB

ON February 26 the Alumnae Club met at the home of Fidelia Triani O'Hara. Our new and efficient president, Nola Wilson Anderson, presided. Plans for the year were discussed. In addition to the regular business meeting, Josephine H. Miller sang in a delightful manner songs from the early classical period, accompanied by Adah Lore Redman. We are happy to include Adah into the club. She was formerly of Lambda Chapter.

A word of congratulations to Olive German Houston for her splendid work as chairman of our magazine subscriptions. Our members have been actively engaged in teaching, business and numerous other activities; thus the Tulsa Club is keeping music to the fore.—FIDELIA TRIANI O'HARA.

WICHITA ALUMNAE

At the very first business meeting of the Wichita Alumnae Chapter following the Installation Tea, it was decided to sponsor a benefit dance at the Blue Moon on January 30, 1947. Wanda Anderson and Marguerite Hopkins were appointed to make necessary arrangements with the Blue Moon management. The proceeds were to be used for a musical scholarship to be presented to a talented, needy student from Wichita University.

We made enough profit from the dance to give two scholarships. One has already been awarded through Phi Pi chapter. The other is to be administered by the Alumnae chapter and will be awarded to an outstanding undergraduate Phi Pi who wins the auditions to be held on April 7, 1947.

Since the installation ceremony we have had three interesting meetings. Marguerite Campbell Elliott, president, entertained the chapter at her home in January. Tickets for the dance were distributed and plans for presenting outstanding Wichita talent through Mu Phi sponsorship were discussed.

The February meeting was held at the

home of Beatrice Sanford Pease. Gretchen Dalley, cellist and Marguerite Elliott, pianist, performed the Rachmaninoff Sonata for 'Cello and Piano. Thelma Siebel and Joan Buller presented a clever musical quiz skit.

The March meeting was held at the home of Margaret Motter. Mrs. B. L. Lewis gave a most effective illustrated talk on the Romantic History of the Shawl Industry. Arrangements were discussed concerning the recital we are sponsoring on March 31. This is to be presented by David Robertson, concertmaster of the Wichita Symphony and Beatrice Sanford Pease, assistant concertmaster. Both Mr. Robertson and Mrs. Pease are members of the Wichita University Faculty. We are extending invitations to prominent musicians, music educators and patrons of music in Wichita to hear these two outstanding musicians in recital. The April meeting will be held in Fisk Hall on the campus of Wichita University. Auditions for the second scholarship will be conducted and election of officers for the coming year will be held.

We have had a very enjoyable, though short, year together and hope that next year will bring forth the same happiness and friendships. Although our chapter is small we anticipate a steady growth both in numbers and achievements in the coming years. We enjoy sharing our sisterhood in opportunities for fostering sorority friendships and also in furthering the cause of music in our community.—MARGUERITE D. HOPKINS.

* * * PACIFIC PROVINCE * * *

TAU

UNIVERSITY OF WASHINGTON
SEATTLE, WASHINGTON

TAU CHAPTER has been enjoying a very active year. A large group of girls were initiated soon after the turn of the year. Members of the Seattle Alumnae Chapter assisted at the initiation. The new members are Marian Adams, flutist; Aileen Foster, vocalist; Jeannine Foster, vocalist; Sue Wooten, flutist and pianist; Ruth Dunlap, violinist; Charlotte

Houghland, pianist; Winifred Balsiger, vocalist; Persis Reynolds, vocalist; Carol Swanson, cellist; Betty Betz, vocalist; June Beard, vocalist; and Elaine Barnhart, pianist. A Mu Phi of long standing is Jean Schumacher, who transferred to our chapter on the night of the initiation. Her entrance into Tau Chapter was marked by her winning of the annual alumnae scholarship.

Forthcoming plans for the chapter include concerts, a theater party, and a Mu Phi-Phi Mu dance.—DOROTHY DAVIS.

NU

UNIVERSITY OF OREGON
EUGENE, OREGON

ACTIVITY for Nu Chapter began the very first day of the term when Phyllis Gray Knox appeared in a piano recital at the School of Music. He had word last week that Phyllis was the featured soloist in a recital at the Boston Conservatory of Music in March.

We had a very interesting program meeting January 21, when Dr. Elston of the University School of Music talked to us about modern American music, and particularly about the Music Festival to be held here this spring. You'll be hearing about it later!

This term the Browsing Room Recorded Concerts are under the direction of Margaret Holm.

February 17, Mu Phi talent went out on the air waves with a half-hour program. Two more programs are already planned for the spring term.

Traditionally Nu girls are called upon to usher at many of the Music School recitals. This term saw us "on the spot" for the Band Concert, Woodwind recital, University String Quartet Recital, and the Violin recital of our adviser, Mary Knapp Allton.

Our big project for the term was the Annual Bridge Benefit. The proceeds are mainly for our Opera Score Collection—(we now have sixteen scores with money for more!) We cleared more than ninety dollars this year with almost one hundred attending.

In January a Mu Phi octet was organized. We learned a group of old English folk songs which we presented in costume at the Mu Phi Patroness Silver Tea, February 26 at the Pi Beta Phi house on the campus. The program was so well received, and we had so much fun doing it, that we are planning to keep up our work.

We are proud to announce the pledging of six wonderful girls: Lucretia Prentiss, Ann Whitaker, LaTrelle McCall, Eleanor Sakrison, Reitha Bauman and Janet Kelsey. Formal pledging ceremony was held February 18, with a program by the active girls following.

On February 28 we were happy to initiate Naomi Yaggi Kellis, voice in-

structor at the School of Music. Almost all of the women on the faculty of the School of Music are now Mu Phis.

We are looking forward to the visit of our Province Governor, Margarette Wible Walker on April 1, and to the installation of the new Mu Phi chapter at Lewis and Clark College on March 29. We are so happy to welcome our new neighbor chapter.—JERINE NEWHOUSE.

PHI CHI

FRESNO STATE COLLEGE
FRESNO, CALIFORNIA

HERE it is, the second month of another semester which finds a number of our girls busily preparing for their senior recitals: Elaine Sauer, Helena Kaprielian, Margaret Sebler, pianists, and Annabelle Kroeker Rieke, soprano.

Since our last newsletter, two very lovely affairs have occurred. On December 8, 1946, after a buffet dinner, we had our pledging ceremony at the home of our sponsor, Lyllis D. Lundkvist. Following that, the pledges were presented in a public recital at the home of Mrs. C. Wesley Bird, patroness. Their program consisted of piano and instrumental numbers. On the night of December 18, we had a most enjoyable Christmas party at the home of Ruth Yakligian where we indulged in a few games and "stunts" and exchanged gifts.

We are now planning for the initiation ceremony to be held March 22 here at the school in the co-ed lounge. We are also having a public recital following the ceremony at which members will present selections. A dessert get-together after the recital to honor our new girls will be held once again at the home of our charming sponsor. Initiates include: Helena Kaprielian, Lorraine Kaprielian, Eleanor Heiskell, Patricia Heiskell, Lillian Harmon, Kathryn Taylor, Helen Kazato, and Furn Coe.

As this is just the beginning of the semester we will be planning many other nice affairs to be held in the future.—MARJORIE CHOW.

PHI MU

SAN JOSE STATE COLLEGE
SAN JOSE, CALIFORNIA

WE have just finished initiating ten lovely girls into our Phi Mu Chapter.

In spite of the rain all the formals were beautiful.

Besides our regular concerts this spring, one of which is to be built around some of the original Mu Phi compositions played at convention last summer, we are planning a joint concert with Phi Mu Alpha. Their fine brass players combined with our string players will work out well.

In regard to music in the hospitals: we are co-operating with Phi Mu Alpha on a local project. We believe more can be accomplished in this way. We have lots of plans for these two quarters and you will be hearing from Phi Mu Chapter again.—MARJORIE R. FOLSOM.

MU BETA

WASHINGTON STATE COLLEGE
PULLMAN, WASH.

ON January 7, eleven pledges were initiated into the Mu Beta Chapter at Washington State College. These girls were: Betty Bell, Mary Dayharsh, Susan Jacobsen, Sylvia Lou Newton, and Avis Paulson of Spokane; Helen Duncan, Sunnyside; Jackie Hansen, Hoquiam; Jackie Kay Lynch, Colville; Mary Lou Monroe, Tacoma; Theodora Schroeder, Puyallup; and Betty Slaughter, Longview.

On January 21, officers were installed by the outgoing president, Barbara Seat. The new officers are: June Kretz, president; Lois Ann Divelbiss, vice president; Mary Dayharsh, recording secretary; Theodora Schroeder, corresponding secretary; Avis Paulson, alumnae secretary; Helen Duncan, treasurer; Susan Jacobsen, chaplain; Betty Bell, warden; Betty Slaughter, historian; Sylvia Lou Newton, musician.

February 13, the alumnae of our chapter held a formal reception for Mr. Julian De Gray, an instructor from Bennington College who was on a tour sponsored by the Association of American Colleges. At the reception the girls had a chance to talk with him, and enjoyed hearing about his interesting experiences.

Two of our members, Delores Young, violinist, and Barbara Critchlow, contralto, are working on their senior recitals which will be given in the spring. An-

other event to which we are all looking forward, is a picnic being planned with Phi Mu Alpha.

We feel particularly honored that Mrs. E. Louise Nasmyth, who was our adviser for many years, has been asked to write an account of her and Mr. Nasmyth's musical life together.—BETTY SLAUGHTER.

SAN FRANCISCO ALUMNAE

CHRISTMAS was made brighter for hospitalized veterans by our Mu Phis. Jean Curtis took her girls' glee club and a cappella choir to the Oakland Regional Hospital, Symeta Kuper played in the wards of the Oak Knoll Hospital and Julia Phillips, accompanied by Symeta Kuper, sang for the Palo Alto Veterans Hospital. Many members contributed programs regularly. Julia Phillips is on the Federation of Music Clubs Hospital Committee.

Our patronesses have been most generous in sponsoring our guest day musicales. From one to two hundred people attend. Dr. and Mrs. Henry Beaudoux entertained on Founders' Day; Miss Laura Musto opened her lovely home in February, when Antonio de Grassi, patron, was presented in a group of violin solos. Alice Redewill Miller played a piano group brilliantly. Illustrations of dance rhythm, arranged by Alice Howatt, were also played by Geraldine Rode, Maurine Cornell and Wilma Laurence, stringed trio, assisted by Julia Phillips, soprano. In April Mrs. Stanley Hiller will be our hostess.

In January, at Jessie Cutten's home, Harriet Ihrig, violinist, accompanied by Symeta Kuper; Rhea Fischer, soprano, accompanied by Marcella Vernazza; and Jessie Cutten and Ruth Cornell Cook, duo-pianists, furnished the program. In March we met with Pearl Johnson. Virginia Marshall, an interesting Mu Phi guest, told of her experiences as Red Cross worker in Mare Island Hospital. Miriam Burton, pianist, and Maurine Cornell, cellist, accompanied by Geraldine Rode, gave the program.

Bernice Rose, County Music Supervisor, and Lydia Boothby, San Jose State College faculty member, will attend the California Western Music Educators Conference at Salt Lake City. Anne Mc-

Clelland is president of the Santa Clara County Music Teachers Association. Mary Jean Zimmerman is in New York planning Industrial Music Programs. Ruth Cornell Cook leaves soon for a Caribbean cruise.

Many members are appearing in concert. Elizabeth Krueger was featured as soloist with the San Francisco Theological Seminary A Cappella Choir on tour. She will soon give a concert in Santa Cruz. Rhea Kessler Fischer will sing for the P.E.O. convention. Lois Dangremond Flenner, violinist, played for the Berkeley Piano Club. Symeta Kuper, pianist, gave a program for the Etude Club of Berkeley and Alice Redewill Miller, pianist, was guest soloist of the Piano Club of Phoenix, Arizona.—MILDRED BROWN MCKEE.

PORTLAND ALUMNAE

THE December meeting of the Portland Alumnae Club was a Christmas party and surprise shower for Lillian Acorn of Mu Zeta who was married to Mr. Everett Sydney Ferguson on December 28. This meeting was held at the home of Ethel Brown Parker.

The February meeting held at the home of Lorene West Roberts featured a group of Hugo Wolff songs by Bertha McDouglas, a group of French songs by Joanna James Ellis, and some early American songs by Pearl Pickens Mitchell and her husband Bill. Pearl and Bill were professional entertainers on a New York City radio program for many years.

The original production, "Las Pasadas," a Mexican Christmas, written by Pearl Allison Peterson was very successfully presented by the grade school children of Laurelhurst under the direction of Belva June Mayer.

Ruthelbert Wolfenden Holt has a new baby girl, Molly, born November 17. The other little girl, Sara Jane, is now two years old.

Our president, Ethel Brown Parker, is also the newly elected president of the Greater Past Chief's association of the Oregon Pythian Sisters. This organization has been reactivated after several years of dormancy due to the war.

Our March meeting will be held at the home of Katie Potter Fray and will

feature a string quartet—the Hayden Op. 33 No. 3. Edith Woody will review two books—"Hayden, A Creative Life In Music" by Geiringer and "Music in Our Times" by Salazar.—KATIE POTTER FRAY.

SAN DIEGO ALUMNAE CLUB

TEMPUS FUGIT around here. Here it is March and time for another letter. The San Diego Club will have a meeting next Sunday. Our president, Sigrid Steevers, will preside and welcome a new member, Grace Small. Grace and her husband live in La Jolla, a beautiful place up the coast from San Diego.

Yours truly will appear on the program playing her original composition for piano, Nocturn in d minor. The title not being too original.

We will have very good food at our meeting, because Marie Lowry, the hostess, always has it at her house. We have added the opening and closing ceremonies to our meetings ever since Margaretta Walker visited us. Caliste will accompany the TRIANGLE song at the close of the meeting.

Twelve dollars, recently earned at a White Elephant sale in January, will help on the fund for Mr. Sterling's marker.

Best wishes to everyone for a Happy Easter—MARY H. WALKER.

LOS ANGELES ALUMNAE

ON the evening of January 24 we inaugurated what will become an annual affair hereafter, the joint meeting of this chapter with the Beverly Hills Alumnae, Phi Nu and Mu Nu chapters. Ethel Gabriel presided, and matters of joint interest were discussed and voted upon. Jean Rotzler, soprano, and president of Mu Nu chapter, sang Brahms' lieder, accompanied by Charlotte Brown. Dr. Carlotta Wagner of this chapter acquainted us with certain conclusions on the psychology of learning as set forth in her doctor's thesis. We heartily recommend them to the sisterhood. Margaretta Walker was present, and so was Helen Dill, our esteemed national chairman of scholarships. We closed the evening with Mu Phi chapter and sumptuous refreshments for both

of which Eloise Smith's home is ideally suited.

Maggie Teyte appeared in Los Angeles in a concert early in February, and several members visited her backstage to wish her well. Your correspondent attended the concert, and it was in every way a credit to our famous sister. We regret that fatigue and haste prevented Miss Teyte from sampling our hospitality more fully.

We have a treat in store for our March meeting which will feature the compositions of Grace Good Reed, who you will recall won the Composition Award for 1945. We shall hear a violin, piano, and cello trio, violin and cello solos, and two musical readings. Grace has not been well for about a year, but she elected not to deprive us of the recital and will perform the piano parts herself. On March 20 and 27 this chapter's annual scholarship competitions at USC and UCLA respectively will take place for the purpose of encouraging any outstanding talent to be found in the fields of voice, instrumental music, organ, or accompanying. Elizabeth Copeland, our chairman, reports that one of the judges will be Joseph Piastro, violinist and husband of Mary Piastro of the Beverly Hills Alumnae chapter. Eda Schlatter, pianist, is a former winner of this annual event, and is completing an Eastern concert tour. We are proud to have her on our membership list.

The month of April promises to be an exciting one, for we shall present the scholarship winners to the membership early in the month and then sponsor our first public concert since the war. Mr. and Mrs. Guy Maier, duo-pianists, have been engaged for the evening of the twenty-fourth, and proceeds will be retained in our scholarship fund. Mrs. Maier is a Mu Phi, so she and Mr. Maier have a personal interest in the success of the concert. The hardworking committee in charge of arrangements includes Ethel Gabriel, Fay Sanders, Elizabeth and Frances Copeland, Mary Jane Barton, Frances Latta.

In closing it is my pleasant duty to report the recent marriage of Louise Miller to Mr. Lawrence Cook and the addition to our roster of Linda Sool Denby and Francine Courtwright.—SUE JONES CAMPBELL.

SEATTLE ALUMNAE

Our January meeting was most interesting and unusual. It featured Alice Poot who gave an illustrated lecture on Ecuador and Peru, using both colored movies and stills. Exhibits were shown of South American costumes, insects and early instruments. Dorothy Davis gave flute numbers based on Ecuadorian and Inca music.

Alice spent two years in South America, where she taught English. She is now teaching Spanish in Junior High School in Seattle and is in great demand for public appearances.

We are all looking forward to our annual spring concert to be held in May.

Plans are being made by Montana Williams, chairman, who is assisted by Phyllis Rowe and Margaret Wood.

The scholarship winner of Tau chapter, Jean Shumacher, pianist, is being featured. Also appearing on the program will be Dorothy McGregor Coy, accompanied by Sylvia Bratrud Taylor, both of whom won scholarships in past years.

The program will conclude with a string trio composed of Louise Oliver, Margaret Forbes and Eleanor Wilson.—DORIS SUTTON.

SPOKANE ALUMNAE CLUB

SPOKANE ALUMNAE CLUB was on the patroness list for two outstanding musical performances during the past month. The first was the Eleanor Skok concert with the Spokane Philharmonic Symphony Orchestra; the second, the concert of Carolyn Faulkner, a Mu Phi doing graduate work at Washington State College under the teaching guidance of Mrs. La Verna Kimbrough, also a Mu Phi. Miss Faulkner has a mezzo-soprano voice of extraordinary range and richness.

The program for our March meeting will be the review of a musical book by Miriam Radcliffe of Cheney. Miriam is an out-of-town member who annually supplies us with a fascinating program.

Mary Short, one of our teaching members, is again in charge of the piano adjudication series to be held here in May.—MIRIAM HUNTER.

MU PHI EPSILON DIRECTORY

FOUNDERS

WINTHROP S. STERLING, Mus.D.....(Deceased)
ELIZABETH MATHIAS FUQUA

HONORARY ADVISORY BOARD

ELIZABETH MATHIAS FUQUA (Mrs. John W.), Apt. 10 Lafayette Apts., Greeley, Calif.Alpha
MYRTLE PALMER LEACH (Mrs. F.)Gamma
ELFRIDA LANGLOIS KENT (Deceased).....Delta
ALICE DAVIS BRADFORD PECK (Mrs. Arthur), 40 Wilmuth Ave., Wyoming, OhioAlpha
ORA BETHUNE JOHNSON (Mrs. J. F.), (Deceased).....Theta
MARY TOWSLEY PFAU (Mrs. Wm.), (Deceased).....Alpha
ROXILETTE TAYLOR YEATES (Mrs. John), Cody, Wyo.....Theta
ANCELLA M. FOX (Mrs.), (Deceased).....Iota Alpha
HARRIET THOMPSON WRIGHT (Mrs. Wm. E.), 482 Glenn Ave., Fresno, Calif.Chi
DORIS BENSON (Mrs. Walter), Spikeswood Farm, Woodruff, Wis.....Iota Alpha
PERSIS HEATON TRIMBLE (Mrs. Charles M.), (Deceased).....Mu Alpha
LUCILLE EILERS BRETTSCHEIDER (Mrs. August, Jr.), 3426 Morrison Place, Clifton, Cincinnati, Ohio.....Alpha
ORAH ASHLEY LAMKE (Mrs. George), 138 Linden Ave., Clayton, Mo.....Delta
DOROTHY ELIZABETH PATON, 1307 Iroquois Place, Ann Arbor, Mich.....Gamma
BERTHA MARRON KING (Mrs. Daniel P.), 208 Oliver Ave. So., Minneapolis 5, Minn.....Mu Epsilon
ELIZABETH AYRES KIDD (Mrs. A. E., Jr.), New Trier High School, Winnetka, Ill.....Mu Xi, Sigma

NATIONAL COUNCIL 1946-47

President—AVA COMIN CASE (Mrs. Lee O.).....Gamma, Ann Arbor Alumnae School of Music, University of Michigan, Ann Arbor, Michigan
First Vice President—MARGARETTE WIBLE WALKER.....Mu Nu, Los Angeles Alumnae 5163 So. Normandie, Los Angeles 37, California
Second Vice President—RUTH ROW CLUTCHER (Mrs. John).....Philadelphia Alumnae 21 Kent Road, Upper Darby, Pennsylvania
Third Vice President—HILDUR LAVINE SHAW (Mrs. W. S.).....Phi Iota 1319 Ninth Street, South, Fargo, North Dakota
National Editor—MILDRED MARTIN CHRISTIAN (Mrs. Henry C.).....Mu Phi, Cleveland Alumnae, 1568 Lauderdale Avenue, Lakewood 7, Ohio

NATIONAL EXECUTIVE OFFICE

Executive Secretary-Treasurer

BERNICE SWISHER OECHSLER (Mrs. Ralph J.).....Epsilon, Toledo Alumnae 6604 Maplewood Avenue, Sylvania, Ohio

* * MU PHI EPSILON * NATIONAL DEPARTMENTS * *

ENDOWMENT FINANCE

- Great Lakes*—DOROTHY E. PATON, *Chairman, Ann Arbor Alumnae*, 1307 Iroquois Place, Ann Arbor, Michigan.
East Central—Adah M. Hill, *Kappa*; 3444 No. Pennsylvania, Indianapolis 5, Ind.
West Central—Una Callahan (Mrs. J. E.), *Austin Club*; 702 Lamar Blvd., Austin, Texas.
Pacific—Lillian Pettibone, *Portland Alumnae*; 319 S. W. Oak, Portland, Ore.
Atlanta—Louisa W. Allensworth (Mrs. E. B.), *Atlanta Alumnae*; 781 Crestridge Dr. N. W., Atlanta, Ga.

EDITORIAL BOARD

MILDRED MARTIN CHRISTIAN, *National Editor*

Atlantic:

Beta—Martha Jean Robinson, Suite No. 1, 114 The Fenway, Boston, Mass.
New York City—Margaret Sherman, 165 W. 83rd St., New York, N. Y.

Great Lakes:

Phi Omicron—Martha Immel, 11112 Bellflower Rd., Cleveland 6, Ohio.
Detroit—Doris P. Houghton, 18298 Indiana Ave., Detroit, Mich.

East Central:

Mu Omicron—Doris Wulff, 2527 Moorman Ave., Cincinnati 6, Ohio.
St. Louis—Adelaide B. Adams (Mrs. Hampton), 2 Windemere Place, St. Louis 12, Mo.

West Central:

Mu Gamma—Ara Jane Hill, 4035 Holdredge St., Lincoln, Nebr.
Kansas City—Margaret S. Hamilton (Mrs. W.), 4016 Wabash, Kansas City, Mo.

Pacific:

Nu—Wilma Jeanne Wilson, Hendricks Hall, Eugene, Ore.
Los Angeles—Ethel W. Gabriel (Mrs. Chas. H.), 1142 S. Longwood Ave., Los Angeles 6, Calif.

Pacific Coast Press Representative: Sue Jones Campbell (Mrs. B. J.), 2653 Halm Avenue, Los Angeles 34, Calif.

NATIONAL LIBRARIAN

ELIZABETH MATHIAS FUQUA, Apt. 10, Lafayette Apts., Greeley, Colo.

ALUMNAE BOARD

HILDUR LAVINE SHAW, *Alumnae Advisor*.

Atlantic:

Rochester—Helen K. McHose (Mrs. A. Irvine), 37 Summit Dr., Rochester 10, N. Y.

Washington—Quinta J. Frey (Mrs. J. W.), 4236 47th St. N. W., Washington 16, D. C.

Great Lakes:

Chicago—Marie L. Keller (Mrs. Warren H.), 10020 S. Hoyne Ave., Chicago 43, Ill.

Lansing-East Lansing Club—Harriet Hillier, 331 Southlawn, East Lansing, Mich.

East Central:

Minneapolis—Lucille T. O'Connell (Mrs. G. E.), 5733 Wentworth, Minneapolis, 9, Minn.

St. Louis—Cleo Milligan (Mrs. R. H.), 7575 Stanford, St. Louis, Mo.

West Central:

Denver—Violette M. McCarthy (Mrs. Lorne V.), 1035 So. Fillmore Way, Denver 9, Colo.

Tulsa Club—Belle Vickery Matthews (Mrs. Tom B.), 1412 S. Utica, Tulsa 4, Okla.

Pacific:

San Francisco—Julia Rose Phillips (Mrs. Dariel), 355 Filbert St., San Francisco, Calif.

Seattle—Eleanor H. Wilson (Mrs. P. R.), 2800 39th St. W., Seattle, Wash.

MAGAZINE SUBSCRIPTION AGENCY BOARD

GRAYCE KENT CLARK (Mrs. Roy L.), *Chairman, Des Moines Alumnae*; 1616 46th St., Des Moines, Ia.

Atlantic—Elizabeth Prokop, *Mu Upsilon*; 149 Versailles Rd., Rochester 5, N. Y.

Great Lakes—Eunice Groth (Mrs. W. W.), Milwaukee Club; 4824 W. Townsend St., Milwaukee 10, Wis.

East Central—Maryland H. Blackburn (Mrs. D. V.), Evansville Alumnae, 751 E. Powell Avenue, Evansville 13, Ind.

West Central—Wilma Cozart, *Phi Tau*; Box 5245, T. C. Station, Denton, Texas.

Pacific—Martha Day, *Los Angeles Alumnae*; 1735 Canyon Dr., Los Angeles, Calif.

MANUAL

MABEL HENDERSON, *Chairman, Theta, St. Louis Alumnae*; 761 Belt Ave., St. Louis 12, Mo.

RITUAL

BERTHA M. KING, *Chairman, Minneapolis Alumnae*; MacPhail School of Music, Minneapolis, Minn.

MUSIC IN HOSPITALS

VIOLA M. ANDERSON (Mrs. H. O.), *Chairman, Phi Iota*; 1038 1st St. No., Fargo, N. Dak.

SCHOLARSHIPS

HELEN CHUTE DILL, *Chairman, Phi Nu*; 304 N. La Peer, Dr., Beverly Hills, Calif.

MU PHI EPSILON SCHOOL OF MUSIC AT GAD'S HILL CENTER

Director and Representative on Settlement Board of Gad's Hill: FRANCES HUFF BUTLER (Mrs. O. G.), *Mu Xi*; 5405 Dorchester, Chicago 15, Ill.

Treasurer—ALMA E. GRAMBAUER, *Mu Xi*; 1350 Henry St., Des Plaines, Ill.

Active and Alumnae Chapters

ATLANTIC PROVINCE

Province Governor—RUTH ROW CLUTCHER (Mrs. JOHN), National Second Vice President; 21 Kent Road, Upper Darby, Pennsylvania

Beta—New England Conservatory of Music.....Boston, Mass.

President—MARTHA JEAN ROBINSON, Suite I, 114 The Fenway, Boston, Mass.
Mu—Brenau College.....Gainesville, Ga.

President—NANCY GOODE, Alpha Gamma House, Gainesville, Ga.

Psi—Bucknell University.....Lewisburg, Pa.

President—DOROTHY GLECKNER, Bucknell University, Lewisburg, Pa.

Mu Upsilon—Eastman School of Music, University of Rochester.....Rochester, N. Y.

President—BETTY BRADFIELD, 424 University Ave., Rochester, N. Y.

Phi Gamma—Peabody Conservatory of Music.....Baltimore, Md.

President—BERNICE SPATLER, 4715 Dunkirk Ave., Baltimore 29, Md.

Phi Upsilon—Boston University.....Boston, Mass.

President—DORIS HILTS LAVELY (Mrs. Wm.), 17 Yarmouth St., Boston, Mass.

Phi Psi—Mary Washington College of the University of Virginia....Fredericksburg, Va.

President—NORA BRYANT, College Station, Fredericksburg, Va.

Phi Omega—Westminster College.....New Wilmington, Pa.

President—MARILYN LOUISE ASHBAUGH, Ferguson Hall, New Wilmington, Pa.

Epsilon Beta—Queens College.....Charlotte, N. Car.

President—TRAVIS WYLIE, 1941 Woodcrest Ave., Charlotte 4, N. C.

Atlanta Alumnae Chapter—

President—LOUISA W. ALLENSWORTH (Mrs. E. B.), 781 Crestridge Dr. N. E., Atlanta, Ga.

Boston Alumnae Chapter

President—VIRGINIA PRIOR MORRELL (Mrs. W. STUART), 62 Dwight St., Brookline, Mass.

- Meadville Alumnae Club*
 President—DOROTHEA KERR, 601 Chestnut St., Meadville, Pa.
- New York City Alumnae Chapter*
 President—GLADYS SHAFER, 449 W. 21st, New York 11, N. Y.
- Philadelphia Alumnae Chapter*
 President—PAULINE BRINKMAN WOLF (MRS. EDOAR), 216 So. 46th St., Philadelphia 39, Pa.
- Pittsburgh Alumnae Chapter*
 President—BERNICE AUSTEN, 1083 Shady Ave., Pittsburgh, Pa.
- Rochester Alumnae Chapter*
 President—GLADYS ROSSDEUTSCHER, Eastman School of Music, Rochester 4, N. Y.
- Washington Alumnae Chapter*
 President—OLIVE PRATT (MRS. R. H.), 714 N. Wayne, Arlington, Va.

GREAT LAKES PROVINCE

- Province Governor*—Ava Comin Case (Mrs. Lee O.), National President;
 School of Music, University of Michigan, Ann Arbor, Michigan
- Gamma*—University of Michigan.....Ann Arbor, Mich.
 President—DORIS GALE, 1308 East Ann, Ann Arbor, Mich.
- Epsilon*—Toledo Conservatory of Music.....Toledo, Ohio
 President—MARANA BAKER, 622 W. Woodruff, Toledo 2, Ohio.
- Iota Alpha*—Chicago Musical College.....Chicago, Ill.
 President—ETHEL A. WITT, 64 E. Van Buren, Chicago, Ill.
- Sigma*—Northwestern University.....Evanston, Ill.
 President—CONSTANCE CONKLIN, Chapin Hall, Evanston, Ill.
- Mu Xi*—American Conservatory of Music.....Chicago, Ill.
 President—MARY LOUISE SAYRE FLYNN, 7102 Luella Ave., Chicago 49, Ill.
- Mu Pi*—Ohio Wesleyan University.....Delaware, Ohio
 President—MARILYN SIDNELL, Monnett Hall, Delaware, Ohio
- Mu Phi*—Baldwin-Wallace College.....Berea, Ohio
 President—NORMA BOYLE, Merner-Pfeiffer Hall, Berea, Ohio.
- Phi Kappa*—Wayne University.....Detroit, Mich.
 President—JEANNE SMALLWOOD, 16571 Stansbury, Detroit 4, Mich.
- Phi Omicron*—Western Reserve University.....Cleveland, Ohio
 President—MARTHA IMMEL, 11112 Bellflower Rd., Cleveland 6, Ohio
- Phi Sigma*—DePaul University.....Chicago, Ill.
 President—FRANCES E. ALDER, 6112 N. Kilbourne, Chicago 30, Ill.
- Ann Arbor Alumnae Chapter*
 President—MAYME WORLEY (MRS. J. S.), 841 Oakland, Ann Arbor, Mich.
- Chicago Alumnae Chapter*
 President—MARIE LUTMAN KELLER (MRS. W. H.), 10020 So. Hoyne Ave., Chicago 43, Ill.
- Cleveland Alumnae Chapter*
 President—HAZEL MINER GILPIN (MRS. R. M.), 10118 Thrush Ave., Cleveland 11, Ohio
- Detroit Alumnae Chapter*
 President—DORIS P. HOUGHTON (MRS. M. G.), 18298 Indiana, Detroit 31, Mich.
- Toledo Alumnae Chapter*
 President—DARRELL HEWS PETERSON (MRS. ARTHUR), 2628 Powhatan Pkwy., Toledo 6, Ohio
- Milwaukee Alumnae Club*
 President—HELENE WERNECKE, 3560 No. Oakland Ave., Milwaukee 11, Wis.

EAST CENTRAL PROVINCE

- Province Governor*—Mildred Martin Christian (Mrs. Henry C.), National
 Editor; 1568 Lauderdale Ave., Lakewood 7, Ohio
- Zeta*—DePauw University.....Greencastle, Ind.
 President—MARTHA PAYNE, Alpha Gamma Delta, Greencastle, Ind.
- Theta*—Kroeger School of Music.....St. Louis, Mo.
 President—ELEANOR DEBNEY, 4973 Mardel Ave., St. Louis 9, Mo.
- Kappa*—Arthur Jordan School of Music.....Indianapolis, Ind.
 President—FLORINE DUFF, 1213 No. Pennsylvania St., Indianapolis 2, Ind.
- Upsilon*—Cincinnati Conservatory of Music.....Cincinnati, Ohio
 President—MARJORIE TAYLOR, Highland Ave. & Oak St., Cincinnati 19, Ohio
- Omega*—Drake University.....Des Moines, Ia.
 President—MARGARET DAVIS, 1226 48th Street, Des Moines, Ia.
- Mu Alpha*—Simpson College.....Indianola, Ia.
 President—JEAN LIGGETT, Delta Delta Delta, Indianola, Ia.

- Mu Epsilon*—MacPhail College of Music.....Minneapolis, Minn.
 President—ALICE ARNESON, 1721 W. Franklin, Minneapolis 5, Minn.
- Mu Omicron*—College of Music.....Cincinnati, Ohio
 President—DORIS WULFF, 2527 Moorman Ave., Cincinnati 6, Ohio
- Mu Psi*—Coe College.....Cedar Rapids, Ia.
 President—KATHLEEN KAHLER, Voorhees Hall, Cedar Rapids, Ia.
- Phi Theta*—Lindenwood College.....St. Charles, Mo.
 President—COLLEEN JOHNSON, Irwin Hall, St. Charles, Mo.
- Phi Rho*—Minneapolis College of Music.....Minneapolis, Minn.
 President—ESTELLE LARSEN WYLIE (MRS. EUGENE), 2020 Nicollet Ave., Minneapolis, Minn.
- Epsilon Alpha*—The College of St. Catherine.....St. Paul, Minn.
 President—ANNE MARIE SPAETH, Caecilian Hall, St. Paul, Minn.
- Epsilon Gamma*—Belhaven College.....Jackson, Miss.
 President—CYNTHIA ELAINE KNIGHT, Belhaven College, Jackson, Miss.
- Cincinnati Alumnae Chapter*
 President—CLARA W. YOUMANS (MRS. HAROLD), 2214 Highland Ave., Cincinnati 19, Ohio
- Des Moines Alumnae Chapter*
 President—CLARA DAVISSON WATTS (MRS. G. H.), 4212 Holland Dr., Des Moines 10, Ia.
- Indianapolis Alumnae Chapter*
 President—RUBY WINDERS, 332 N. Ritter Ave., Indianapolis, Ind.
- Minneapolis Alumnae Chapter*
 President—LUCILLE TAYLOR O'CONNELL (MRS. G. E.), 5733 Wentworth, Minneapolis, 9, Minn.
- St. Louis Alumnae Chapter*
 President—ADELAIDE B. ADAMS (MRS. HAMPTON), 2 Windemere Place, St. Louis 5, Mo.
- St Paul Alumnae Chapter*
 President—DOROTHY MURPHY NIEMAN, 1545 Goodrich, St. Paul 5, Minn.
- Cedar Rapids Alumnae Club*
 President—EDNA MAE KRIZ SILA (MRS. LOUIS H.), 1017 21st St. S. E., Cedar Rapids, Ia
- Evansville Alumnae Club*
 President—MARY STRATTON LEGEMAN (MRS. RALPH), 506 Roosevelt Dr., Evansville, Ind.

WEST CENTRAL PROVINCE

- Province Governor*—Hildur Lavine Shaw (Mrs. W. S.), National Third Vice
 President; 1319 Ninth St. So., Fargo, No. Dakota
- Xi*—University of Kansas.....Lawrence, Kansas
 President—MARJEAN CARR, Miller Hall, Lawrence, Kans.
- Mu Gamma*—University of Nebraska.....Lincoln, Nebr.
 President—ARA JANE HILL, 4035 Holdrege, Lincoln, Nebr.
- Mu Delta*—Kansas City Conservatory of Music.....Kansas City, Mo.
 President—MARY KATE PARKER, 20 W. 36th St., Kansas City 2, Mo.
- Mu Theta Epsilon*—University of Texas.....Austin, Texas
 President—NANCY BOWEN, 2001 University Ave., Austin, Texas.
- Mu Kappa*—University of Oklahoma.....Norman, Okla.
 President—MARI GUMM SCOTT (MRS. L. J.), 514 So. Webster, Norman Okla.
- Mu Mu*—Kansas State College.....Manhattan, Kans
 President—NEVA JEAN FLEENER, 812 No. Manhattan, Manhattan, Kans.
- Mu Tau*—University of South Dakota.....Vermillion, So. Dak.
 President—JANET ROBINSON RICHARDSON, 611 Center St., Vermillion, So. Dak.
- Mu Chi*—Southern Methodist University.....Dallas, Texas
 President—DOROTHY JEAN HARDING, Box. 243 S.M.U., Dallas, Texas
- Phi Epsilon*—College of Emporia.....Emporia, Kans.
 President—JOYCE BROWN, Dunlap Hall, Emporia, Kans.
- Phi Zeta*—Morningside College.....Sioux City, Ia.
 President—LOIS McCALLUM, 3312 Vine, Sioux City, Ia.
- Phi Iota*—Concordia College.....Moorhead, Minn.
 President—BORGHILD TORVIK, 610 9th St. So., Moorhead, Minn.
- Phi Xi*—Baylor University.....Waco, Texas
 President—ROSEMARY HYNDS (MRS.), 1821 Gorman Ave., Waco, Texas
- Phi Pi*—University of Wichita.....Wichita, Kans.
 President—GLORIA BROWNING FOUTS (MRS. F. M.), 1743 No. Holyoke, Wichita, Kans.
- Phi Tau*—North Texas State Teachers College.....Denton, Texas
 President—ANN SHANDS, 1023 W. Sycamore, Denton, Tex.

- Phi Phi*—University of Kansas City.....Kansas City, Mo.
President—MARGARET GUSTAVESON, 5532 Woodland, Kansas City, Mo.
- Denver Alumnae Chapter*
President—RUBY WILMETH HEDGES (Mrs. W.), 633 Logan, Denver, Colo.
- Kansas City Alumnae Chapter*
President—MARGARET STANLEY HAMILTON (Mrs. R. W.), 4016 Wabash, Kansas City 4, Mo.
- Lincoln Alumnae Chapter*
President—DOROTHY MAY VANDERSLICE (Mrs. Carl), 1948 Harwood, Lincoln, Nebr.
- Wichita Alumnae Chapter*
President—MARGUERITE CAMPBELL ELLIOTT (Mrs. Robert N.), 429 So. Volusia, Wichita, Kansas
- Austin Alumnae Club*
President—UNA CALLAHAN (Mrs. J. E.), 2513 McCallum Drive, Austin, Texas
- Dallas Alumnae Club*
President—EVELYN CRUTCHER MITCHELL (Mrs. E. B., Jr.), 4639 Edmondson Ave., Dallas 9, Texas
- Houston Alumnae Club*
President—HELEN PORTER LAPAT (Mrs. Wm.), 2301 Maroneal Blvd., Houston 5, Texas
- Oklahoma City Alumnae Club*
President—HETTIE BAUM (Mrs. E. Eldon), 2544 N. W. 30th, Oklahoma City, Okla.
- Tulsa Alumnae Club*
President—NOLA WILSON ANDERSON (Mrs. Fay T.), 1119 E. 26th St., Tulsa 5, Okla.

PACIFIC PROVINCE

- Province Governor*—Margarette Wible Walker, National First Vice President, 5163 So. Normandie, Los Angeles 37, Calif.
- Nu*—University of Oregon.....Eugene, Ore.
President—WILMA JEANNE WILSON, Hendricks Hall, Eugene, Ore.
- Tau*—University of Washington.....Seattle, Wash.
President—JEAN DEPUE, 6823 19th N. E., Seattle, Wash.
- Mu Beta*—Washington State College.....Pullman, Wash.
President—BARBARA SEAT, Kappa Alpha Theta, Pullman, Wash.
- Mu Zeta*—Whitman College.....Walla Walla, Wash.
President—ANNA SALTERS, Prentiss Hall, Walla Walla, Wash.
- Mu Eta*—College of the Pacific.....Stockton, Calif.
President—MARILYNNE BURGER, College of the Pacific, Stockton, Calif.
- Mu Nu*—University of Southern California.....Los Angeles, Calif.
President—JEAN ROTZLER, 1937 N. Canyon Dr., Hollywood 28, Calif.
- Phi Lambda*—Willamette University.....Salem, Ore.
President—MARION ERIKSON, 275 Hood St., Salem, Ore.
- Phi Mu*—San Jose State College.....San Jose, Calif.
President—JEWELL SMITH, 1163 Norval Way, San Jose, Calif.
- Phi Nu*—University of California at Los Angeles.....Los Angeles, Calif.
President—CONSTANCE MATHIS, 1118 Glendon, Los Angeles 24, Calif.
- Phi Chi*—Fresno State College.....Fresno, Calif.
President—ELAINE SAUER, 254 E St., Fresno, Calif.
- Epsilon Delta*—Lewis and Clark College.....Portland, Oregon
President—PATRICIA J. OSBORNE, 4109 N. E. Davis, Portland 15, Oregon.
- Beverly Hills Alumnae Chapter*
President—CAROLYN COE, 235½ South Elm Drive, Beverly Hills, Calif.
- Los Angeles Alumnae Chapter*
President—ETHEL GABRIEL (Mrs. Chas. H.), 1142 So. Longwood Ave., Los Angeles 6, Calif.
- Portland Alumnae Chapter*
President—ETHEL BROWN PARKER (Mrs. J. L.), 2670 N. W. Buehla Vista Terrace, Portland 10, Ore.
- San Francisco Alumnae Chapter*
President—JULIA ROSE PHILLIPS (Mrs. Dariel), 355 Filbert St., San Francisco, Calif.
- Seattle Alumnae Chapter*
President—HELEN M. KRETSINGER, 4337 15th N. E., Seattle 5, Wash.
- Eugene Alumnae Club*
President—EDNA LESIE PEARSON (Mrs.), 1479 High, Eugene, Ore.
- San Diego Alumnae Club*
President—SIGRID LIER STEEVES (Mrs. Geo. W.), 4317 Argos Drive, San Diego 4, Calif.
- Spokane Alumnae Club*
President—IRMINGARD KING CROWDER (Mrs. John), 1223 West Sinto, Spokane, Wash.

WEAR YOUR MΦE BADGE EVERY DAY

The L. G. Balfour Comapny is proud to be appointed Sole Official Jeweler to Mu Phi Epsilon. To the members and officers, we pledge our cooperation and give our assurance and guarantee of traditional Balfour high quality, prompt service, and courtesy.

INSIGNIA PRICE LIST BADGES

Plain Bevel Border.....	\$ 5.00
Crown Set Pearl.....	14.00
Crown Set Pearl, 3 Diamonds...	67.00
Crown Set Pearl, 6 Diamonds...	120.00
Crown Set All Diamond.....	279.00
Raised Lyre additional.....	1.00
Recognition Pin 10K.....	1.75
Pledge Pin, Sterling.....	0.75

PATRON OR PATRONESS PINS

Nugget border.....	4.00
Crown Set Pearl.....	13.00

GUARD PINS

	MEDIUM OR SMALL		LARGE
<i>Single Letter</i>			
Plain Gold.....	\$ 2.25	\$ 4.00	
Close Set Pearl.....	4.50	6.00	
Crown Set Pearl.....	6.00	8.00	
<i>Double Letter</i>			
Plain Gold.....	3.50	6.50	
Close Set Pearl.....	7.00	11.50	
Crown Set Pearl.....	6.00	8.00	

ADD 20% FEDERAL TAX TO ABOVE PRICES
AS WELL AS ANY STATE TAXES IN EFFECT

Note . . . All orders for insignia must be placed with Mu Phi Epsilon National Executive office, with the Secretary-Treasurer, Mrs. R. J. Oechsler, 6604 Maplewood Avenue, Sylvania, Ohio.

MΦE MUSIC AWARD MEDAL

Illustrated at the right is the Music Award Medal, made in sterling or gold filled qualities.

Sterling Silver	\$2.25
10K 1/10 Double Rolled Gold Plate.....	3.50
18" Sterling Neck Chain.....	0.75
18" Gold Filled Neck Chain.....	1.00

ADD 20% FEDERAL TAX TO ABOVE PRICES. MAIL ORDERS TO NATIONAL EXECUTIVE OFFICE.

1947 BLUE BOOK

Beautiful crested rings, bracelets, lockets, pendants, compacts, photo frames, writing portfolios, billfolds, and other fine crested gifts.

Mail post card for **FREE COPY**.

Sole Official Jeweler to Mu Phi Epsilon

L. G. **BALFOUR** COMPANY
FACTORIES AT ATTLEBORO MASSACHUSETTS





he

*Mu Phi Epsilon
Creed*

*I believe in Music, the noblest of all the arts,
a source of much that is good, just, and beauti-
ful; in Friendship, marked by love, kindness,
and sincerity; and in Harmony, the essence of
a true and happy life. I believe in the sacred
bond of Sisterhood, loyal, generous, and self-
sacrificing, and its strength shall ever guide me
in the path that leads upward toward the stars.*

—RUTH JANE KIRBY, Omega