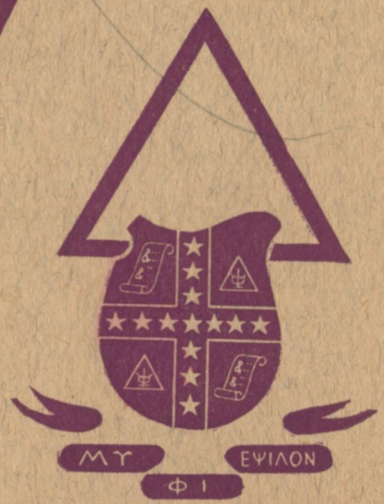


v. 41 # 1

The Triangle



OF MU PHI EPSILON

November, 1947



CALENDAR

1947-48

- First Week of School: *President* calls meeting of chapter officers to inspect chapter equipment, discuss fall materials received from NEO (National Executive Office, 6604 Maplewood Avenue, Sylvania, Ohio), and make plans for the year.
- Corresponding Secretary* reports any changes in name and address of chapter officers to NEO and orders supplies for the year (from NEO), enclosing check and remittance blank secured from *Treasurer*.
- September 10—*Historian*: All material for inclusion in November TRIANGLE must be in Office of National Editor, Mildred M. Christian, 1568 Lauderdale, Lakewood 7, Ohio.
- November 13—Founders' Day. Forty-fourth Anniversary.
- Treasurer* sends with remittance blank to NEO, check for Founders' Day Fund voluntary contribution of 44 pennies per member.
- November 15—*Treasurer* and *Corresponding Secretary* prepare and send to NEO, fall membership lists (on official forms) and check with remittance blank to cover fall per capita taxes (\$1.50 per member) and Convention taxes (\$1.25 per member), and TRIANGLE subscriptions for annual subscribers (\$1.00 per year).
- Historian*: Deadline for material for January TRIANGLE. *Omit newsletter*.
- December 15—*President* writes fall report letter to your Province Governor concerning chapter activities and problems.
- January 10—*Historian's* required newsletter due at Office of National Editor; Deadline for all material for March TRIANGLE.
- February 1—Manuscripts for Original Composition Contest due at Office of *National Second Vice President*, Ruth Row Clutcher, 21 Kent Road, Upper Darby, Pa.
- February 1—Contestants, Musicological Research Contest: send notice of your intention to enter contest to *National Third Vice President*, Hildur L. Shaw, 1319 Ninth St. So., Fargo, No. Dak.
- March 10—*Historian*: Deadline for material for May TRIANGLE. Convention delegate glossy and biographical sketch due. *Omit newsletter*.
- Last Week of First Semester: *President* appoints Nominating Committee for new Chapter officers.
- April 1—Manuscripts for Musicological Research Contest due at Office of National Third Vice President (address given above, Feb. 1).
- First Month of Second Semester—*President* calls meeting of chapter for the election of new officers, who will be installed in office during the second month of the second semester.
- Corresponding Secretary* reports the names and addresses of new chapter officers (on official forms) to NEO.
- April 15—*Treasurer* and *Corresponding Secretary* prepare and send to NEO, spring membership lists (on official forms) and check, with remittance blank to cover spring per capita taxes (\$1.50 per member), and Convention taxes (\$1.25 per member).
- President* writes spring report-letter to your Province Governor.
- June 1—*President*, *Treasurer*, and *Corresponding Secretary* send annual reports to NEO (on official forms).

★ The Triangle ★

Of Mu Phi Epsilon

VOLUME 41



NUMBER 4

In This November, 1947, Issue

Call to Founders' Day.....	2
Chicago Alumnae Chapter Presents Distinguished Mu Phi.....	3
<i>By Marie L. Keller</i>	
National Scholarship Winner: <i>Lorena Joyce Brown</i>	5
From Our Second Vice President: <i>Ruth Row Clutcher</i>	6
Announcing 1948 Composition Contest.....	7
On Tour with "Fif" and the San Francisco Symphony.....	8
<i>By Marjorie M. Fisher</i>	
They Chose Mu Phi: Spring 1946 Installations.....	13
The Musicological Research Contests.....	15
<i>By Hildur Lavine Shaw</i>	
The Pride of Mu Phi.....	17
Mu Phi in Peabody Opera.....	20
Chapter Initiates	24
Ideas from Phi Xis Deep in the Heart of Texas.....	31
Tribute to Etelka Evans.....	34
Chapter Honors—1946-47.....	35
Family Relations in Mu Phi Epsilon.....	40
Information, If You Please.....	42
Triangle Tidbits	45
Losses in Our Sisterhood.....	48
Mu Phi Epsilon Directory.....	51

Mildred M. Christian, Editor

THE TRIANGLE of Mu Phi Epsilon is published four times yearly, the first of November, January, March and May, at 2642 University Ave., Saint Paul, Minnesota, by Leland Publishers, Incorporated (The Fraternity Press) for Mu Phi Epsilon, National Music Sorority. The subscription price is \$1.00 per year. Deadlines for copy: Materials for publication must reach the Editor, 1568 Lauderdale Ave., Lakewood 7, Ohio, before the tenth of September, January, March and the fifteenth of November. Entered as second class matter at the postoffice at Saint Paul, Minnesota, under the act of March 5, 1879.

Dedicated

to the loving memory of

DR. WINTHROP S. STERLING

who with

ELIZABETH MATHIAS FUQUA

founded Mu Phi Epsilon

Again this year, the entire sisterhood will take pride in honoring our founders with their voluntary contributions to the

Dr. Sterling Memorial Fund

established in memory of Dr. Sterling for the advancement of music in America.



WINTHROP S. STERLING
(Deceased November 16, 1943)

Call to Founders' Day

It is November—the Thanksgiving month of the year. It is a time for family gatherings—of festivity and happiness, and of thoughtful contemplation on our many blessings. Let us use this month which belongs to MU PHI EPSILON as a time of gathering together in joy and happiness, in sisterly friendship, and in prayerful thanks that our beloved Founders chose the thirteenth of November, 1903, as the day to dedicate themselves and the many sisters joining with them in the years to come to the betterment of the world through music.

With sincere affection for each sister in MU PHI EPSILON,
AVA COMIN CASE
National President



MARIE MORRISSEY KEITH (MRS. ROYDEN JAMES)
President, National Federation of Music Clubs

CHICAGO ALUMNAE CHAPTER *presents* Distinguished Mu Phi

BY MARIE L. KELLER, *President*
Chicago Alumnae Chapter

△ MARIE MORRISSEY KEITH is indeed a distinguished Mu Phi that Chicago Alumnae Chapter is proud to present nationally, having recently achieved one of the nation's highest musical honors—that of being President of the National Federation of Music Clubs.

Marie was born in New York where her ancestors who had come to America in 1678 had finally settled after crossing the country in covered wagons. She started her

musical career as a pianist, and at sixteen was playing a pipe organ in Brooklyn and conducting an adult glee club. She became more interested in voice, and at twenty made her Towne Hall debut as a contralto. Immediately she was engaged as soloist for the Fifth Avenue Presbyterian Church of New York City, where she remained for six years. During this time she was given a long-term recording contract, and also appeared with Mario Chamlee



National Scholarship Winner

LORENA JOYCE
BROWN
Phi Epsilon

△ THIS YEAR'S winner of the National Scholarship Award is Lorena Joyce Brown of Atchison, Kansas. Joyce, as she is known to most of her friends, graduated (cum laude) last spring from the College of Emporia, Emporia, Kansas, with a degree of Bachelor of Music Education.

An accomplished musician, Joyce not only majored in organ, but also piano. She has studied violin with Joseph Harding of the Kansas City Philharmonic and has also had experience with the viola and bass clarinet.

While attending the College of Emporia, Joyce was active in many musical activities, but her first love was Mu Phi Epsilon. In the Phi Epsilon chapter she was corresponding secretary, vice-president, and president. She was selected to represent her chapter, as a delegate, to the national convention in New York City in July, 1946. Sincerely interested in Mu Phi she added much to the chapter by her faithfulness.

For two years Joyce served as

chapel organist. She was also accompanist for the women's glee club, ensembles, and soloists. This spring she was organist for "The Messiah" presented by a chorus of 175 voices. She was also a member of the A Cappella Choir and the College Symphony Orchestra.

Joyce was not only active in musical activities on the campus but also in every other phase of college life. She was president of the Student Christian Association, a member of Athena Honor Society, a member of Alpha Kappa Chi and was selected for Who's Who in American Colleges and Universities. Off the campus, she was a member of the women's quartet and the choir of the First Presbyterian Church in Emporia.

Her professional career is just beginning. Having presented senior recitals in both piano and organ and having obtained her Bachelor of Music Education degree in the spring, Joyce was immediately summoned to the schools of Ponca City, Oklahoma, for a teaching position.

Proudly Phi Epsilon Chapter says, "Best wishes and congratulations to you, Joyce!"—MARY HELEN BECK, *Historian*.

al Federation of Music Clubs have held as many important offices as Marie during the brief seven years it has taken her to reach the highest office in that distinguished organization.

For eighteen years Marie has been a loyal and devoted member of Mu Phi Epsilon. Mu Iota Chapter at Columbia School of Music in Chicago was her active affiliation, but Chicago Alumnae Chapter has claimed her since 1933. Our members turned out en masse at the Chicagoland Music Festival Luncheon at the Stevens Hotel on August 15, when Marie was the honored guest and principal speaker. Saturday night at the Chicagoland Festival in Soldiers Field she was feted as honor guest before an audience of 95,000 music lovers.

As she leaves in September on a tour that will have taken her over the entire country by late spring, we bid her Godspeed and wish her the success she so richly deserves. Should she come to your city, be sure to welcome her: you will find her a true Mu Phi and a sincere and appreciative friend.

August 4, 1947

DEAR MEMBERS OF MU PHI EPSILON:

Your gracious congratulations and good wishes upon my recent election to the presidency of the National Federation of Music Clubs were received with deepest appreciation.

To measure up to the high standards established by predecessors in this office and to carry forward with wisdom and steadfastness of purpose the successful development and unfoldment of our many projects, is at any time an arresting challenge. If, in this unpredictable era of our history, I may even in part fulfill your expectancies, I shall be most humbly grateful.

Please be assured that my talents and strength shall be completely dedicated to this accomplishment during my tenure of office, and that your evidences of faith and confidence will contribute far more than you can know to whatever successes may be ahead in this administration.

With warmest thanks, I am

Faithfully yours,

MARIE MORRISSEY KEITH
(Mrs. Royden J. Keith)

on one of the first nation-wide radio broadcasts from New York. As Marie Morrissey she was widely known as a recitalist in concert, oratoria, and radio. She was soloist with leading symphony orchestras, including those of Cincinnati and Minneapolis, and appeared at the most important music festivals over the country, including the Bach Festival in Bethlehem, Pa., Cincinnati May Festival and the Evanston Festival.

Marie has resided in our city since her marriage to Royden James Keith on December 20, 1920. As Mrs. Keith, she very shortly retired from the concert stage and began devoting her time to the promotion of music by participating in numerous musical organizations and activities throughout Chicago.

In 1940 Marie was elected president of the Illinois Federation of Music Clubs, a position which she held with distinction for four years, still having time to be president of the Auxiliary Ambulance Corps of Illinois. After such wonderful success as a state president it is natural that she should achieve national prestige. Few women in the Nation-



From . . .
 Our Second
 National
 Vice President

RUTH ROW
 CLUTCHER

I want to thank all chapters, clubs, and individuals who have so wholeheartedly cooperated in getting this file started. I know it has meant a great deal of work on the part of busy people, but I feel sure it has been time well spent. I say "started" because I know we have only scratched the surface of Mu Phi Epsilon compositions. While we are keeping before us our aim of advancing music in America let us remember first of all our own Mu Phi Epsilon members of whom we can well be proud, and introduce their compositions wherever and whenever possible. And please, each chapter, be quite sure that your own composers, active or alumnae, have not been overlooked.

The following composers are represented in our file at the present time: Eugenia Wright Anderson—Chicago Alumnae Chapter; Mary Ruth Jesse Aull—St. Louis Alumnae Chapter; Dorothy Gaynor Blake—St. Louis Alumnae Chapter; Evelyn Busby—Mu Theta Epsilon Chapter; Louise Crawford—Cedar Rapids Alumnae Club; Bonita Crowe—Washington Alumnae Chapter; Margaret Davis—Omega Chapter;

Mu Phi Epsilon's
 National
 Composers' File

It is with a great deal of pleasure that I am able to report that our National File of Mu Phi Epsilon Composers and Compositions now represents twenty-seven composers and well over two hundred compositions, more than one hundred of which are published. Copies of a large percentage of those still in manuscript are available either from this office or directly from the composer. Lists of these compositions are now being made up according to musical category and will be sent to any chapter, club, or individual upon request. The various categories are piano, violin, organ, voice, choral, ensemble and orchestral, as well as a short list of published articles on musical subjects. Addresses of composers may be requested from this office.

Roberta Dresden—Gamma Chapter; Hilda Butler Farr—Chicago Alumnae Chapter; Kathryn Whitfield Ford—Boston Alumnae Chapter; Genevieve Davisson Fritter—Cleveland Alumnae Chapter; Octavia Reader Gould—Chicago Alumnae Chapter; Elizabeth Henderson—Pittsburgh Alumnae Chapter; Josephine Janes Hutchinson—San Diego Alumnae Club; Dorothy James—Ann Arbor Alumnae Chap-

ter; Dorothy Keller—Mu Nu Chapter; Lorna Koplín—Mu Phi Chapter; Eugenia Frothingham Lombard—Boston Alumnae Chapter; Lucille Manker—Chicago Alumnae Chapter; Mildred Novit—Mu Theta Epsilon Chapter; Jean Schumacher—Tau Chapter; Persis Heaton Trimble—Past National President; Constance Virtue—Alpha Chapter; Caliste Conant Walker—San Diego Alumnae Club; Esther I. Wiedower—Mu Mu Chapter; Jean Williams—Portland Alumnae Chapter; Amy Worth—Seattle Alumnae Chapter.

Announcing

THE 1948 ORIGINAL COMPOSITION CONTEST

Closing Date: February 1, 1948

Compositions shall be divided into six classes:

- A. H. H. A. Beach Memorial Award: open to former **FIRST PRIZE** winners **ONLY**. Only one composition of any kind may be entered by any one former first prize winner. Award, \$50.00.
- B. Orchestra: concerti, symphonic works, miscellaneous smaller forms. Award, \$50.00.
- C. Ensemble (chamber music): string ensemble, quartette, trio, etc. Award, \$25.00.
- D. Choral Music: cantatas, anthems, etc. Award, \$25.00.
- E. Vocal Solos: Award, \$25.00.
- F. Instrumental Solos: Award, \$25.00.

The Mu Phi Epsilon Original Composition Loving Cup will be awarded to the composer of the best composition of all classes. Her name and the name of her chapter will be engraved on the Cup.

RULES

1. ALL contestants must be members of Mu Phi Epsilon
2. All manuscripts must be in the hands of the National Second Vice President, Ruth Row Clutcher, 21 Kent Road, Upper Darby, Pa., not later than February 1, 1948. Return postage should be included
3. Only unpublished compositions may be submitted. Composers of songs and choral works must indicate that they have secured permission from authors of texts before submitting compositions.
4. Not more than one manuscript in each class may be submitted by any one contestant.
5. Manuscripts must be neatly and legibly written in ink.
6. Each manuscript must be marked with title, nom de plume, AND its class letter.
7. Each manuscript must be ac-

(CONTINUED ON PAGE 16)



On Tour With "Fifi" and the San Francisco Symphony

BY MARJORY M. FISHER*
San Francisco Alumnae Chapter

△ MLLE FIFI and I joined the San Francisco Symphony's tour to see the world. Fifi was on a leash. I wasn't. And the fact that my adolescent dream of touring the one night stand circuit was realized with a Corona instead of a Strad as the qualifying instrument robbed the adventure of not one whit of thrill and excitement. In fact, it increased it. Because I never had to worry whether or not I would be too tired to play well when night came. I could always correct my mishits and get a story into the last air mail while the music makers were acknowledging the nightly ovation and, together with Fifi, anticipating a post-concert hamburger somewhere between concert hall and depot.

For that was the plan—a daily report to the symphony's home city via the columns of the *San Francisco News*. I had applied for the assignment the very day the tour was

announced—almost a year ahead of time. Two months before the tour was to start, Editor Frank Clarvoe OKed my project. And in the wee small hours of the morning of March 16, the San Francisco Symphony Special pulled away from the Oakland mole bearing the ninety-five instrumentalists, three property men, the orchestra's executive staff (manager, assistant manager, public relations director), librarian and me—with Conductors Pierre and Doris Monteux and Fifi, the tour's mascot, comfortably established in the drawing room compartment at the tail end of the last of the seven Pullmans.

For seven weeks, the orchestra knew the train as "home." We went to bed in one city, awakened in another in time for breakfast. Only occasionally was there need for a diner. One such occasion was made memorable by the courteous thoughtfulness of the Canadian Pacific R.R. which printed a special

breakfast menu for the train with a gay Mountie on the outside and the inscription "San Francisco Symphony Tour" inside the cover. The fare was lavish and excellent and the price for the table d'hote meal only \$1.25. (Some of the men had two of the entrees, and all for the same price!) Try doing that in the USA!

But it was a far stretch from Oakland to the Canadian Pacific. It represented about 10,000 miles (the entire tour covered 15,469 miles of railroads)—with the one-night stands bound together by such keynotes as Woolworths and Kresses to make the traveler feel at home, to where he could buy souvenir postals for less than half the rate charged at hotel and depot newsstands. They were also bound together by a nation-wide chorus of Red Caps whose theme song is "But the COMPANY gets forty cents" when you hand them a half dollar for toting four pieces of baggage. (I longed for the courage to say "Yes! And the COMPANY pays YOU a SALARY").

It included such places as Visalia, (Calif.) where they had not seen a passenger train for so many years that fond parents brought their youngest offspring down to the tracks and invaded our home to show the youngsters what a passenger train was like! From there we went into Los Angeles and to hotels, traveling to Ontario and Pasadena concerts by bus before moving back into the train for a trek to San Diego and back to L.A. before heading for Phoenix, Arizona.

In Phoenix I first became aware of the strange booking operations employed in cities where a Civic or Community Concert Series has been

established. NCAC and Columbia (Civic and Community sponsors, respectively) although ostensibly competitors, play ball with each other at the expense of independent local managers. The booker-sponsored series has first choice of all attractions going through the territory, whether booked by NCAC or Columbia. And it seems that these local groups can change their minds, say NO! a couple times—and then when they find the independent concert manager buys the attraction they have rejected, they can still reverse their decision, say "We want it"—and get it! The TRIANGLE is not exactly the place to argue the pros and cons of booking systems—but any Mu Phi members who are affiliated with managerial groups can follow through on the subject by reading the *Musical Digest* for last April.

From Phoenix we went to El Paso for an afternoon concert. And across the bridge into Juarez for dinner. This is probably the cleanest of the Mexican border towns and is a Mecca for tourists. Consequently it is a line of souvenir shops, street stalls, and eating places. We selected the largest and well-recommended dining spot and while I have an aversion to musical entertainment along with my meals, I thought that at least a Mexican night club would have something a bit different and colorful to offer. Alas! The first act was introduced as a very special event—a tap dancer from Chicago. Whereupon we sought the more colorful street—bought souvenirs and crossed the border back into the USA and headed for the tracks and train.

We arrived late the following day

*Music Editor *San Francisco News*

in San Antonio, Texas, which is in my opinion, the most charming city in the entire country. And its Hotel Anthony is the cleanest and most beautifully managed hotel I have encountered anywhere since long before the war. I want to go back there and spend at least a week. As it was, I had but a scant twenty-four hours—sixteen of which I stole for myself by leaving the symphony train and going ahead of the orchestra through Houston and Galveston to get four days in New Orleans before rejoining the orchestra in Montgomery. In the meantime, the symphony went into Northern Texas—into Forth Worth, Denton and Wichita Falls—before following my trail to the coast. The orchestra saw only as much of New Orleans as could be seen from the train. Because it was Holy Week, they did not venture an engagement there.

A series of blind dates paid big dividends in New Orleans and I had a gay and interesting time there. But the one Mu Phi will be most interested in was the adventure on my last day. It was Sunday—the day I had selected for the Mississippi River sightseeing ride, knowing all my N.O. acquaintances were week-ending out of town and nothing in the city would be open—except the SS President at the Canal Street docks.

I went to the pier early, and sat in a sheltered spot on the deck watching the oncoming throngs. Just as I began to wonder if I looked as funny and uninteresting to the others as they did to me, an attractive woman approached and asked if the seats next to me were taken. I was glad to say that they were not, and welcomed her and her nice appear-

ing husband to my corner, grateful that it was this couple, among all the hundreds, that elected to join me in that special corner.

They had motored from Iowa, and we began discussing our New Orleans adventures. They invited me to join them for dinner after the trip. I was delighted to have found such congenial company for my last night in New Orleans—and this is what we did: Had turtle soup and chef's salad and oyster Rockefeller at La Louisianne; baked Alaskas at the Court of the Two Sisters; visited the Farmers' Market and wound up at the Morning Call for coffee and the best doughnuts in the world—and not until I got back to San Francisco and received a note from her did I have the slightest idea that Mrs. Henry Holcher of Cedar Rapids, Iowa, was a Mu Phi! No wonder she was so nice!

Rejoining the orchestra in Montgomery the following day I found the entire aggregation anti-Texas minded—but they did admit San Antonio was beautiful! As for the rest—they were willing to turn it back to the Indians.

I took a more kindly view of the state's major cities—having been treated like the prima donna instead of the reporter during the hours I spent in Houston—and the beauty of the country between Houston and New Orleans was wondrous compensation for any possible disappointment over the bleak coast at Galveston.

The gray moss hanging from the gray ghostlike trees through the Bayou country made the swamps unforgettable and called to mind the poet's lines concerning "the murmuring pines and hemlocks, bearded

with moss and garlands of green"—but I searched unsuccessfully for the green. "Too early," explained my New Orleans friends.

From that point on, the trip gained in interest and we inspected (and were inspected by) Birmingham, Atlanta, Spartanberg, Richmond—then declared Easter a holiday and spent it seeing Williamsburg before moving on to Washington, Pittsburgh, and New York. And at each successive stop, we discovered that the larger the city and the better its own symphony orchestra, the bigger and better the ovation bestowed upon ours.

That does not mean the smaller cities did not appreciate and respond enthusiastically to the orchestra. They did. And in almost every city outside of the music capitals, Pierre Monteux added an encore to the program. In the major cities the ovations were not only overwhelming but they afforded the extra thrill of seeing the conductors of their orchestras (and almost the entire personnel, too) in the audience.

Toscanini, Reiner, Koussevitsky—and dozens of others—were in our audiences, and all marveled that Pierre Monteux who celebrated his 72nd birthday anniversary in Norfolk, had conducted a concert a day and still showed no signs of weariness.

Yet the thrill of winter snows in April was provided by Canada, and and it was as welcome as it was unexpected. The only compensation for being awakened at 6 A.M. by immigration and customs officials at the border, was to peer out the window and see snow falling. Ottawa, Montreal and Quebec were magic cities with their rapidly falling

or newly fallen snow and not even the near blizzard that greeted us in Ottawa kept the hardy San Franciscans from filling every possible moment with sightseeing. And how beautiful was the Parliament Building—and how formal and dignified; the department of the legislators in executive session!

As a usual thing, we all knew where our fellow travelers were heading and knew who we could find at the Chamber of Commerce, in hotel rooms or lobbies, on public tennis courts or riding the sightseeing buses, if any. We were also quite sure to know who was staying on the train to sleep, read, play cards—or just sitting by the tracks lazily watching the natives go by until hunger or the approach of the concert hour forced them into town. But it was not so in Canada.

Every member of the party started off to see the cities. I spent an entire day in Montreal and did not run across anyone I knew until late in the afternoon when I met two of the men in the Cathedral on a sightseeing tour we were taking on different buses, and again just prior to dinner when shoppers met on the street en route to train, laden with purchases of all sorts ranging from perfumes to overcoats and from linens to shoes.

In Quebec we had the thrill of seeing our concert advertised in French, and shopped in one store in the French section where they had to page an English-speaking saleslady to wait on our party. It has always been a source of wonder to me how anyone could live in a country without learning the language thereof. Yet even in the States, the French seem loathe to

adopt any language other than their native tongue.

After leaving Canada, I left the Symphony Special when it reached Buffalo en route to Jamestown, N. Y., and returned to New York for a spree and to Boston for the Symposium on Music Criticism held at Harvard the first three days in May. And it was the very day I left the train that Fifi had her big night.

Mrs. Monteux' French poodle had made headlines by being rejected and ejected from a Los Angeles hotel, and by being denied the privilege of attending the concert in Constitution Hall in Washington. She had attended every concert up to that point and behaved very beautifully in the concert halls—but very badly when relegated to the baggage room in Constitutional Hall. But Mlle Fifi was due to have her night.

The train was late and did not reach Jamestown until about a half hour before curtain time. It took two hours to get the baggage car unloaded and the instruments and stands and music transported and set up in the concert hall at each stop. And the audience had started assembling at 7 P.M. It was preposterous that it should have to wait until 9:30 for the overture.

And so Doris Monteux (Mrs. Pierre) who is a great story teller went out on the stage to entertain

the audience with accounts of the Monteux and orchestra doings—leaving Fifi backstage with Mrs. Naoum Blinder, wife of the concertmaster, and the only wife apart from Mrs. Monteux to make the trip.

Mrs. Monteux had been talking a little while when Pierre Monteux requested Mrs. Blinder to let go of Fifi's leash.

"You know what will happen, don't you?" inquired Mrs. Blinder.

"Zat ees why I vant you to drop eet" replied the conductor.

Whereupon Mlle Fifi made a dash from the wings to the center of the stage and costarred for the next half hour with her "mamma"—much to the delight of the Jamestown audience. I would have liked to have seen performance!

I should have very much liked to have continued the homeward trip on the Symphony Special but the lure of New York was too great. Back in New York they were still talking of the great success of the San Francisco Symphony—and two of our orchestra's former concertmasters—Louis Persinger and Michel Piastro—were among the most enthusiastic appreciators of the orchestra which, like Young Lochinvar, had come out of the west—and triumphed, winning ovations at every stop.

FAITH WITH WINGS

HILDA BUTLER FARR, *E. V. Durling's*
column—*Herald American, Chicago*
Alumnae Chapter

I know
That you have faith in me
And from that knowledge I can soar

Above prosaic daily tasks
To heights
Unknown before.
Your faith in me is far above
All other joys the world contains . . .
Because of this my vanished dreams
Return like soothing rains.—

THEY CHOSE MU PHI

Installations—Spring 1946

EPSILON DELTA CHAPTER Lewis and Clark College

BY PATRICIA OSBORNE GILHAM

△ EPSILON DELTA CHAPTER of Mu Phi Epsilon was installed on the week end of March 28, 1947, at Lewis and Clark College, in Portland, Oregon. Margarette Wible Walker, our beloved National First Vice President, was our installing officer. She arrived in Portland by plane in time to enjoy a lovely dinner, at the home of Margaret Notz Steinmetz, our Faculty Adviser. Immediately following dinner, the events of the week end began to unfold. Assisted by our own Ella Mae Howard, wife of the Dean of the college and sponsor of our Chapter, Margarette Walker formally pledged the girls.

Saturday morning, a breakfast for all officers and advisors was served by Frances Berry Turrell, woman faculty member. Questions were answered for us at this time and the duties of the officers explained.

A delightfully informal luncheon on Lake Oswego with all members present was the next event of the day. Dr. Howard, Dean of Lewis & Clark College, was an invited guest for the afternoon.

The moment we all had been an-

ticipating finally arrived that afternoon. The Portland Alumnae Chapter prepared the beautiful drawing room of the women's building while the girls changed for the ceremony. We all felt a sense of humility at the honor being bestowed upon us, and the beauty and dignity of the ceremony left a lasting impression on each and every girl. Margarette Walker again officiated, ably assisted by Ella Mae Howard; Ethel Parker, President of the Portland Alumnae Chapter; Faye Holman, Genevieve Dundore and Lillian Pettibone, all of the Portland Alumnae Chapter, and Mary Margaret Dundore of the Nu Chapter.

The only cloud to darken an otherwise bright and happy occasion, was the untimely and shocking death of Marjorie Evans, wife of our Dean of Music, John Stark Evans. Marjorie worked gallantly to bring Mu Phi Epsilon to the campus of Lewis and Clark College. In her honor a memorial service was held following the initiation. We members of the newly formed Epsilon Delta Chapter will remember Marjorie Evans with love and deep gratitude for her unflinching efforts on our behalf. Ella Mae Howard is now taking over as sponsor for our Chapter and her guidance and helpful assistance is greatly appreciated.

A formal banquet at the Benson Hotel with 200 guests present was our last appointment for the day.

With John Stark Evans acting as Toastmaster, we were greeted by Ethel Parker, Dr. Morgan S. Odell, President of Lewis and Clark College, Marie Peary from the Nu Chapter of Oregon, who presented Epsilon Delta Chapter with a lovely historian's book, Phyllis Gray Knox of the Eugene Alumnae Chapter and Mrs. Charles Gale, representing the Patronesses.

Following the greetings from the various representatives, Margarette Wible Walker spoke of Mu Phi Epsilon. Bringing us from the time it originated up to the present day in a very interesting manner. A short program followed presenting Patricia Barnard, pianist, Patricia Osborne Gilham, soprano, and Margaret Notz Steinmetz, accompanist.

With twelve new girls to be pledged this fall, our chapter will be a thriving one to say the least. We are all looking forward to a year of vigorous activity. The girls feel especially proud of the fact that they are Charter Members in such an organization and will strive to live up to the high ideals of Mu Phi Epsilon.

Assisting our chapter in many ways will be the following patronesses: Mrs. E. E. Ripley, Mrs. Morgan S. Odell, Mrs. Emma B. Meier, Mrs. Victor Creed, Mrs. Maurice Seitz, Mrs. Glen Z. Townsend, Mrs. Ora Bess Seeburger, Mrs. Wilson Johnson, Mrs. Charles Gale, Mrs. Warren C. Hunter, Miss Freda O. Hartzfeld and Mrs. E. T. Dwyer.



Epsilon Delta Chapter, Lewis and Clark College, Portland, Oregon—(Standing, left to right) Karen Lafky, Shirley Haga Zumwalt, Patricia Barnard, Frances Berry Turrell, Maude P. Bohlman, Margaret Notz Steinmetz, Ella Mae Howard, Virginia Muhle, Connie Berkey, Patricia Pike. (Seated) Nancy Dewey, Grace Hoyt, Patricia Osborne Gilham, President Margarette Wible Walker, Gloria Anderson, Dorothy Kirkwood, Abigail Trask. Not in picture: Gloria Kibbee Cooke, Loretta Kaimbach, Janet Pohlman, Marian Russchoff, Billy Ryburn and Patricia Steen.

The Musicological Research Contests

BY HILDUR LAVINE SHAW
National Third Vice President

△ As part of the National program of Mu Phi Epsilon, there was established some years ago by the alumnae of our sorority, a Musicological Research Contest to encourage study, research, and discussion in the field of musicology—with a view to publication of the material thus secured in the Mu Phi Epsilon Triangle. These contests have had the good fortune to be helped and supported by all Mu Phi members who voluntarily contribute Founders' Day Pennies (one for each year of the sorority's existence) commemorating the founding of our beloved sorority. The sponsors of this Musicological Research Contest (your alumnae) are extremely grateful for the continued interest of this project.

It is the policy of Mu Phi Epsilon to secure the finest musicologists in the United States to act as judges, so as to have the best, most complete, and honest evaluation possible of the works submitted. This is a rare opportunity for all Mu Phis to win a hundred dollar prize, have the work criticized by eminent musicologists, and the thesis printed in an



issue of THE TRIANGLE. This year, Dr. William S. Newman, University North Carolina, Chapel Hill, North Carolina, Dr. Lloyd Hibberd, North Texas State Teachers College, Denton, Texas, and Dr. Raymond Keendahl, University of Michigan, Ann Arbor, Michigan, graciously consented to act as judges.

Two theses were submitted last April first. However, the judges were unanimous in the thought that the papers presented were too short to warrant a hundred dollar prize. It is hoped that the two who contributed the theses will heed the advice and suggestions of these outstanding musicologists—correct the errors made, and lengthen their papers to the desired ruling.

This year is but another milestone along our road. Our foundation is sure, our enthusiasm is growing—our future is limited by one thing only, and that is the degree of support which you will give.

As Chairman of this contest, I

invite suggestions and recommendations in helping our organization to further the goals of this activity—that will be of assistance in guiding the alumnae association to enlarge this worth-while project. The success of these contests depends directly upon the co-operation of all Mu Phi. It is an opportunity for all. Let's not lose that opportunity because of our inertia, lack of vision, and disinterest. May I anticipate your entrance in this contest?

CONTEST RULES

(If for any reason you may not find in these rules and suggestions what you are looking for, I will always be glad to answer your inquiries. These rulings correspond with those of the National Assn. of Music Schools and meet the approval of the American Musicological Society. Remember—papers should be a CREATIVE EFFORT and a contribution to knowledge; bibliography must be adequate—list sources on which study was based alphabetically by authors—use proper technique of footnote writing.)

Composition Contest Rules Announced

(CONTINUED FROM PAGE 7)

companied by a sealed envelope containing composer's name, nom de plume, name of original chapter, present affiliation, and full address. No indication of composer's identity shall appear elsewhere. The envelope must be marked on the outside with name of composition, nom de plume, and class letter. If class letter does not appear on manuscript AND outside of envelope composition cannot be entered in contest. The envelope will be

1. Contest shall be open to all members of Mu Phi Epsilon.
2. Applicant shall submit material of a research nature, and shall exhibit evidence of creative ability. *Rulings for guidance as to standard of workmanship and length of thesis will be sent to each contestant.*
3. Applicant shall not submit the same thesis in more than one contest, but may submit a revision and further development of a subject already presented.
4. All contest theses shall be passed upon by a group of judges well known in the field of Musicology.
5. An award of one hundred dollars (\$100.00) will be made if, in the opinion of the judges, any thesis merits the award.
6. No special form of application blank is necessary, but a letter must be sent to the National Third Vice President by February 1, 1948, indicating the desire of the writer to enter a thesis in the contest. The thesis itself must be in the office of the National Third Vice President (Hildur Lavine Shaw, 1319 Ninth Street South, Fargo, North Dakota), before midnight April 1, 1948.
7. Applicant shall give name, address, name of chapter of initiation, and present affiliation (chapter or Mu Phi-at-large).
8. A self-addressed stamped envelope or fee sufficient to cover Railway Express shall accompany the thesis for the return of the manuscript.

- held in the office of the National Second Vice President until after the reports—made by titles only—of the three judges have been received by her.
8. Announcement of prize winners will be made at the 1948 National Convention.
9. Prizes may be withheld if, in the opinion of the judges, none of the compositions submitted are of caliber warranting an award. The decision of the judges will be final.

THE PRIDE OF MU PHI

PHI PHI'S VIRGINIA VOIGTLANDER

VIRGINIA VOIGTLANDER was born in Plainfield, New Jersey, and began the study of the violin at the early age of six. A few years later, as a junior member of the Kansas City Music Club, she was awarded a silver cup for having won it three years in succession.

Virginia's frequent attendance at Juilliard School of Music Summer School, studying with Louis Bostelman, Louis Persinger and Sascha Jacobson, won her many honors through high school.

Virginia graduated from the Juilliard School of Music in 1943 as an honor student. Up to 1942 she studied with Sascha Jacobson when, in national competition, she was

awarded a Fellowship for study with Edouard Dethier in the Graduate School.

Six months of 1945 was spent touring France and Germany as soloist and concert master of the Roesch Little Symphony Orchestra, assembled in New York.

In 1947 Virginia was first place winner for Missouri in the national competition for the \$1,500 award offered by Paul LaValle, radio orchestra leader. She also qualified for the semi-finals in the National Federation of Music Clubs' Contest in the central region at Kansas City, Missouri. She tied for first place in violin.

Virginia has appeared as soloist with Efrem Kurtz and the Kansas City Philharmonic Orchestra and made a solo appearance with Thor Johnson and the Juilliard Symphony Orchestra recently. She graduated this spring from the Juilliard Graduate School of Music. Her Mu Phi affiliation is with Phi Phi Chapter who are extremely proud to present so talented a sister in the *Pride of Mu Phi*.

PHYLLIS GRAY KNOX

Nu Chapter and Eugene Alumnae have long watched with joy and admiration the accumulated musical achievements of Phyllis Gray Knox. When pledged to Mu Phi Epsilon, she had already made a noteworthy name for herself as a concert pianist.

While her husband, David Knox, served overseas, Phyllis decided to complete her senior year at the New England Conservatory of Music.



The end of two years in Boston found her with both B.A. and M.A. degrees in music; membership in Pi Kappa Lambda; a goodly collection of recital and concert appearances; and an engagement as soloist in the Beethoven "Emperor" Concerto with the famed Boston "Pops" Orchestra.

This year, after being presented in a concert at the University of Oregon by Mu Phi, she returned to Boston for a formal Jordan Hall debut. Both critics and friends who made up the enthusiastic audience acclaimed it an outstanding concert. —LOUISE C. WHITTON.

MU NU'S EDA SCHLATTER JAMESON

Mu Nu's Eda Schlatter, now Mrs. Rex F. Jameson, began her musical education at the age of five, appeared as soloist with Symphony Orchestra in the Grieg "Concerto" at



PHYLLIS GRAY KNOX

fifteen, and has been appearing regularly in concert since.

At twenty-one Eda graduated with highest honors from the University of California at Los Angeles. Her graduate work there was in composition.

Winner of various contests in performance, she was also recipient of the Phi Beta Plaque for excellence in music arts in 1941 and the Mu Phi Epsilon award in 1940. Aside from her many California concerts, Eda has appeared in concerts in the East and Middle West with great success. Mu Nu is indeed proud of the sister who with each concert reaffirms the enviable reputation she has already acquired.

MU PHI'S MARY FRIEDLY

Mary Friedly of Warren, Ohio, is the pride of Mu Phi Chapter at Baldwin-Wallace Conservatory of Music, Berea, Ohio. As a Junior,

Mary was awarded first place in the piano division of the Ohio "Student Musicians' Contest" in Columbus, March 14, 1947. These contests are annually conducted by the National Federation of Music Clubs. Mary will graduate this year with a piano major. Her teacher is Mr. Carl Schluer, head of the piano department and husband of Margaret Murray Schluer, formerly of Omega Chapter. Mary serves her chapter as treasurer this year.—SELMA RIEMENSCHNEIDER.

GAMMA'S KATHRYN KARCH

Gamma Chapter of Mu Phi Epsilon has many members of whom they are very proud. One in whom they take special pride is Kathryn Karch of Monroe, Michigan. Kathryn came to the University of Michigan in 1943 with a fine high school record and with the honor of being awarded the High School Music Cup. During her freshman year at the University she had the highest scholastic average of first-year women music students and was the recipient of the Gamma Chapter Mu Phi Epsilon Medal. As a sophomore, she again rated at the top of her class and received the \$50 scholarship award for that honor. Her senior year has been one of

many honors for Kathryn for she has been awarded membership in Phi Kappa Phi, Pi Kappa Lambda, and Phi Beta Kappa! In addition she was awarded the highest honor of the School of Music, the Stanley Medal, given for outstanding scholastic and professional achievement.

BETA'S AURA MONGADA

Beta Chapter is proud to have Aura Mongada of Bogotá, Colombia, as one of its newest members. Last April she was guest soloist with the Mexico Symphony Orchestra in Mexico City. Senor Miguel Aleman, President of Mexico, attended.

Aura took her first piano lessons at the age of six, from her mother, also an accomplished pianist. At fourteen she won a competitive scholarship at the Conservatorio Nacional de Música in Bogotá, and graduated from that institution in 1945. That fall she entered the New England Conservatory of Music, Boston, Massachusetts, where she has studied with Beveridge Webster and Miklos Schwalb while working for the Soloist's Diploma.

Aura will give a recital at Town Hall in New York in November. In December she is scheduled to go on tour through Central and South America.—EMMA JANE WEST.



KATHRYN KARCH

AURA MONGADA

MARY FRIEDLY



By BERNICE SPRATLER
Phi Gamma Chapter

△ IN the early part of 1937, a performance of a Menotti Opera, "Amelia Goes to the Ball," sung in English, was heard at the Lyric Theatre in Baltimore, Maryland. As a companion piece, "The Wretched Sailor" by Darius Milhaud, was also performed. Fritz Reiner conducted the orchestra.

There was something unique about this production in the beautiful old theatre which has housed many of the most famous artists ever to appear in America—unique, in that it brought an internationally famous man into Baltimore and to the teaching staff of the Peabody Conservatory. That artistic individual was the present Director of the Peabody Opera Class, Dr. Ernest Lert, Phd.

Dr. Lert's distinguished career as Director of Opera in Europe, was well known when he came to America. His first work in this country was with the Metropolitan Opera Company where he spent two years. Then he went to the Curtis Institute of Music in Philadelphia to head its Opera Department. It was

ACT I LA BOHEME—MAY 2ND PERFORMANCE PEABODY OPERA

Left to Right: Albert Schwartz—Collin; Joseph Papa—Rodolfo; Albert Hirsch—Schaunard; Benoit—Maurice Penn; Marcello—Le Roy Werner.



★ Mu Phis in

while he had an opera group from that school out on the road that the Menotti and Milhaud creations were heard in Baltimore.

The Director of the Peabody Conservatory of Music, hearing the performance at the Lyric Theatre, realized that Baltimore needed just such a personality in its musical life. Dr. Lert soon after, accepted an invitation to join the Peabody faculty.

With inspiration and courage a slow building-up process was then developed in the Opera Department of the school. It was the intent and purpose from the outset to maintain the Peabody Opera Class on a professional and vocational footing.

There was a sincere endeavor to make opera logical and understandable. Realizing that the English language would be a most efficient tool in helping to bring this about, all works prepared for production were sung in English. Symbolizing forms were abolished and a down-to-earth, natural type of acting adopted. All effects were spontaneously achieved and creation from within stressed.

ACT IV

Left to Right: Catherine Rowe—Musetta, MΦE; Joseph Drogheo—Collin; Clare Burns—Mimi, MΦE; Raymond Hamilton—Rodolfo.



Peabody Opera

One of the first public performances of the Opera Class was "The Jewel Merchants" by Louis Cheslock of the Peabody faculty. From that time on, the Peabody Opera Department became outstanding as an exponent of good operatic works sung in well-translated versions of the original.

The repertoire of the Department contains such works as "Pagliacci," "Cavalleria Rusticana," "Bastien and Bastienne," "The Magic Flute," "Don Giovanni," "Sister Angelica," and "La Boheme." All of these operas have been cast and performed in the professional manner with orchestra, stage settings, and appropriate costumes at the end of each current school year.

Two very fine miracle plays have also been performed. One, arranged by Father Dougherty, S.J., of St. Ignatius Church in Baltimore, was sung in 1945 by members of the Opera Class with Agnes von Rinteln at the organ. The other (one of the above-named operas) Puccini's, "Sister Angelica," was given by an all-female cast in 1946, with an or-

ACT II

Musetta—Ella Schlenuers, MΦE; Alcendora—Marvin Gardiner.



chestra under the direction of Leroy Evans, opera coach for the class, and a patron of Phi Gamma Chapter of Mu Phi Epsilon. Mr. Evans is also the apprentice conductor for the Baltimore Symphony Orchestra.

A number of Mu Phis have taken an active part in all that goes on within the confines of the Opera Department. In the earlier years, when Martha Larrimore appeared in an older work of D'Albert, "Martha in the Lowlands," the fine talent which eventually brought her to the Charles Wagner Company was discerned. Members of Mu Phi who appeared at the same time in other opera works immediately extended her a warm invitation to join the Peabody Chapter. And, when "Don Pasquale" and "Martha" were played at the Maryland Theatre in Baltimore there were Mu Phis in the cast. Appearing as professional talent, the original source of their casting stemmed from the Peabody Opera Class.

Musical life in Baltimore received a tremendous infusion of accelerated activity and higher standards of

ACT III—"CAFE MOMUS"

Left to Right, Top row: "Schounard"—Conrad Gottlieb; Musetta—Catherine Rowe; Collin—Joseph Dragheo—Marcello—Marvin Gardiner; Mimi—Clare Burns; Rodolfo—Raymond Hamilton; Drum Major—Guardon; Lower Row, Men and Women (MΦE). Lower Right: Alcindoro—Maurice Penn, Waitress.



achievement with the coming of Reginald Stewart to Peabody as its new Director in 1940. The Opera Class received its share of this added vitality to the strong life already beating steadily within its precincts. Now, along with developing singers who were to act in opera, there was an idea that the Opera Class could function somewhat as a workshop to foster new compositions, build up conductors, librettists, et cetera.

When one stops to consider that Boris Goldowsky, present Opera Director at New England Conservatory of Music, and Metropolitan Opera Commentator, also Sylvan Levin, of the Philadelphia-La Scala Opera Company, were formerly assistants of Dr. Lert when he was still at the Curtis Institute, it is perfectly natural that Peabody coincided with the objective idea that among the ranks of its students there would emerge some of this ilk.

One individual in this supporting classification who shows promise of achieving her goal is Betty Lou Everett, a Mu Phi, who several years ago was a student of Musical History under Dr. Lert. The brief question, "How does one go about becoming a Director of Opera?" netted Betty Lou the opportunity of a lifetime.

Betty Lou was examined by Dr. Lert and found to be quite intelligent along the lines expected of an assistant. So, she was given her chance. At first the duties were simple—she merely moved furniture during the Opera Class sessions. Then her first assignment came in the form of some back-stage conducting of the chorus for a major production. After this a singing part, the role of Magdalena in "Rigolet-

to," fell to her lot. Finally she was made a stage manager for the 1947 production of "La Boheme."

During the interim Betty Lou was permitted to work out and direct the staging of certain local productions. In the early spring of 1947 she was in New York for rehearsals of a professional company which produced the "Abduction from the Harem," an adaptation of Mozart's, "Seraglio." This opera, with a New York cast, played a short time later in Baltimore and Betty Lou had full charge of the stage during the five-day rehearsal prior to production and for the actual four-day period of performance.

Her work has led her directly into the responsibility of being stage-manager for the 1947 Peabody Opera production, "La Boheme." Leroy Evans conducted the orchestra, and a number of Mu Phis appeared, both in major and minor roles.

During the past two years, 1946-1947, over a dozen Mu Phis have been productive singing artists of the Opera Class, while the two-night performance of "La Boheme" in May of this year brought three Mu Phis to the front as professional talent.

Ella Schleuness, as Musetta in the first night production, established herself as a clever actress of beautiful appearance and fine vocal endowment. In the second night production, Clara Burns as Mimi, proved to be a most sensitive and well-schooled artist for the part, while Catherine Rowe, as her companion, Musetta, showed excellent musical stature and feeling for the role—with a flair for comedy added to it. Both Clare and Catherine

achieved these stellar roles by the end of their first year within the class—a point it is well to notice in watching for further progress where these Mu Phis are concerned.

Glancing through the program one sees the names of such Mu Phis as Mildred Hutchins, Shirley Wikler, Bernice Spratler, Catherine Schotter, Erma Wolf Ihrie, Norma Pumphrey. And, in looking over the year's accomplishments within the Opera Class, many of these same names appear with almost incredible performances behind them.

For example, Erma Wolf Ihrie, dramatic soprano, has mastered a number of difficult roles during the short time she has been in the Opera Class. Erma has appeared in recital in all of the following: Leonara, in Beethoven's "Fidelio;" Aida in "Aida;" Witch in "Hänsel and Gretel;" Santuzza in "Cavalleria Rusticana;" Tosca in "Tosca;" the Princess in "Rosenkavalier;" Waltraute in "The Walkyrie;"—also a number of shorter roles.

To Mildred Hutchins, contralto, can be accredited Carmen in "Carmen;" Mama Lucia in "Cavalleria Rusticana;" Martha Schwertlein in "Faust;" the Mother Superior in "Sister Angelica;" Schwertleite in "The Walkyrie;" Magdalena and Giovanna in "Rigoletto;" and a major role in the Miracle Play of 1945. Along with this, Mildred was a member of the Opera Class Quartet—as was Catherine Rowe, soprano) which sang a cycle of rarely heard Brahms quartets opus 92 at an opera recital in May, 1947. This quartet also sang the song "Warum" from the same cycle of songs at the Conservatory Exhibition concerts during Commencement week (in

commemoration of the Brahms festival which was observed in Baltimore during 1946-1947.)

Ella Schleuness, lyric soprano, came to Dr. Lert when very young and has learned a number of parts within the Class room—singing them later to professional advantage on the Opera Class programs and elsewhere. Ella gives a professional reading to such roles as Nedda in "Pagliacci;" Lola and Santuzza in "Cavalleria Rusticana;" Musetta in "La Boheme;" Countess Ceprano in "Rigoletto;" Tosca in "Tosca;" and Grimmerde in "The Walkyrie."

Lost to Phi Gamma Chapter this year, but one who will be long remembered for her fine performances in the Opera Department, is Olive Harris, now of New York City. Olive, who is a lyric soprano, sang the role of Donna Elvira in "Don Giovanni" in May of 1945 at Peabody, and again, in 1946, the yearly production lead came to her in the title role of Puccini's, "Sister Angelica." Since living in New York, Olive has, among other things, been soloist at New York's famous Riverside Church.

During the war years, when few male voices were available, the Puccini presentation, "Sister Angelica," filled a certain gap in the Opera Class. Being an all-woman production it was perhaps one of the most unusual—and certainly ranks among the rarely heard repertoire on the class roster. Three of the leads for this performance have already been mentioned as Mu Phis. The fourth, who is also a Mu Phi, sang the role of "The Mistress of the Novices." She is Bernice Spratler, dramatic soprano.

A number of supporting artists

(CONTINUED ON PAGE 33)

CHAPTER INITIATES

BETA

Dolores Frances Baldyga
Clinton, Mass.
Faith Coakley
Norwood, Mass.
Betty-Lee Holmgren
Concord, New Hampshire
Aura Teran Moncada
Bogotá, Colombia, S.A.
Lee Morgan
Scarsdale, N. Y.
Karen Brown Morrill
Somerville, Mass.
Helen Marie Orpen
Fall River, Mass.
Serena Jane Rubin
Holbrook, Mass.
Helen Pitman Smith
Leominster, Mass.
Cynthia Irwin Swift
Brewster, Mass.
Drema Lois Taylor
Lewisburg, West Virginia

GAMMA

Joanne Johnson Baker
Larned, Kansas
Patricia Ann Baumgarten
Ann Arbor, Michigan
Harriet Augusta Boden
Indiana, Pennsylvania
Betty Jane Estes
St. Louis, Missouri
Vivian L. Goldberger
Woodmere, New York
Lisbeth Louise Hildebrandt
Ann Arbor, Michigan
Nelle Hocutt
Hattiesburg, Miss.
Emogene Holland
Memphis, Tennessee
Helene Joan Jarvis
Albion, Michigan
Nancy Garside Marsh
Skyland, North Carolina
Elizabeth Anne Massie
Pembroke, Kentucky
Roberta Meyers
Detroit, Michigan
Lydia Pekarisky
Gary, Indiana
Genevieve Ruth Shanklin
Ann Arbor, Michigan
Norma Lee Swinney
Marion, Illinois
Mary Shaw Topa
Ann Arbor, Michigan
Joann Irene Utley
Detroit, Michigan

EPSILON

Joan Elizabeth Bollinger
Toledo, Ohio

Gladys Chisholm
Toledo, Ohio
Marian Wood
Toledo, Ohio
Louise Rowan Witherell
Toledo, Ohio
DeRuth Sage Wright
Toledo, Ohio

ZETA

Veronica Hortense Bowen
Indianapolis, Indiana
Christine Hyde Brown
Springfield, Illinois
Charlotte Loraine Cole
Chicago, Illinois
Grace Louise Grogan
West Bend, Wisconsin
Mary Lane Hubbell
Elgin, Illinois
Juanita Louise Pyritz
Indianapolis, Indiana

THETA

Wilma Jo Fulton
St. Louis, Missouri
Janet Claire Hagen
Glendale, Missouri
Dorothea Andrews Maxwell
University City, Missouri
Anna Virginia Phillips
Lebanon, Illinois
Bonnie Jeanne Trowbridge
University City, Missouri

IOTA ALPHA

Elizabeth Louise Boldenweck
Winnetka, Illinois
Margery Wells Giles
Shreveport, Louisiana
Janet Lee Goethals
Mishawaka, Indiana
Ann Goldstein
Chicago, Illinois
Valoise Idell Johnston
Canton, South Dakota
Bette Lou Lemler
Mishawaka, Indiana
Matina W. Papadogianis
Chicago, Illinois
Harriet Ann Poling
Dayton, Ohio
Rosemary Louise Rushford
Chicago, Illinois
Sara Frances Stapp
Chicago, Illinois
Juanita Verner
Memphis, Tennessee

KAPPA

Mary Louise Masters
Indianapolis, Indiana

Marjorie Louise Morris
Elizabethtown, Indiana
Marie Susan North
Brookston, Indiana
Doris Lee Odell
Michigantown, Indiana
Muriel Evelyn Oeth
Evansville, Indiana
Virginia May Pearson
New Augusta, Indiana
Rose Rohner
Carroll, Iowa
Helen Alice Schimkat
Wayne, Michigan
Elsie Louise Stefan
Indianapolis, Indiana
Betty Delia Wales
Indianapolis, Indiana

MU

Marjorie Adair Pollock
Washington, D. C.
Clair Price
Sparta, Georgia
Ruth Doris Qualls
Olive Hill, Kentucky

NU

Mary Margaret Dundore
Portland, Oregon
Helen Marie Hudson
Bend, Oregon
Altha Adelle Johns
Athena, Oregon
Naomi Yaggy Kellis
Eugene, Oregon
Claire Elizabeth Lewis
Camas, Washington
Virgene Lindley
Eugene, Oregon
Helen Elaine McPetridge
Newport, Oregon
Dorothea Marie Schaeer
Portland, Oregon

XI

Jeanne Marie Aldridge
Kansas City, Kansas
Betty Jane Barkis
Nickerson, Kansas
Eleanor May Brown
Bethel, Kansas
Pearl Clothier
Stafford, Kansas
Maxine Dunkelberg
Osborne, Kansas
Mildred Garrison
Marion, Kansas
Harriet Ann Harlow
Kansas City, Missouri
Patricia Harris
Goodland, Kansas

Donna Lou Holm
Topeka, Kansas
Martha Myers
Norwich, Kansas
Margaret Nelson
Concordia, Kansas
Shirley Jean Ousley
Lee's Summit, Missouri
Ruth Reisner
Lawrence, Kansas
Emily Schnabel
Kansas City, Kansas
Phyllis Seacat
Ashland, Kansas
Shirley Sloan
Kansas City, Kansas
Elaine Thalman
Kansas City, Missouri
Betty Rae Thomas
Leavenworth, Kansas
Twila Wagner
Bennington, Kansas
Sara Elizabeth Webb
Blue Springs, Missouri

SIGMA

Nancy Elizabeth Bacon
Snyder, New York
Maurita Mae Bergh
Chicago, Illinois
Madeleine Harris Brodie
Detroit, Michigan
Dorothy Eloise Bromann
Burlington, Iowa
Mildred Isabelle Drefs
Omaha, Nebraska
Ruth Elizabeth Ford
Freeport, Illinois
Thelma Glass
Chicago, Illinois
Lorraine M. Haggenjos
Barrington, Illinois
Janisse Annette Hultgren
Evanston, Illinois
Marilyn Ruth Penner
Arkansas City, Kansas

TAU

Marian Adams
Spokane, Washington
Winnifred Eunice Balsinger
White Salmon, Washington
Mary Elaine Barnhart
Wenatchee, Washington
Winnifred June Beard
Seattle, Washington
Betty Juanita Betz
Seattle, Washington
Ruth Marie Dunlap
Longview, Washington
Aileen Ann Foster
Seattle, Washington
Jeannine Rehmke Foster
Burton, Washington
Charlotte Joan Houghland
Springfield, Idaho
Margaret J. Moritz
Seattle, Washington
Persis Fidelia Reynolds
Bellingham, Washington
Carol Shirley Swanson
Bellingham, Washington
Susan Jean Wooton
Seattle, Washington

UPSILON

Mary Alice Burns
Pineville, West Virginia
Caryldeen Elizabeth Nelson
Jamestown, New York

PSI

Alice M. Bogdanoff
Havertown, Pennsylvania
Barbara Jane Bond
Lewisburg, Pennsylvania
Nancy Grimm Derkacz
East Orange, N. J.
Mary-Elizabeth Green
Easton, Pennsylvania
Odette Rose Hutchison
Lansdowne, Pennsylvania
Anna Gold Kazary
Lewisburg, Pennsylvania
Margery Jane Reinhart
Lewisburg, Pennsylvania
Nancy Sherrard
Chambersburg, Pennsylvania
Patricia Louise Smith
Lewisburg, Pennsylvania
Marjorie Louise Walter
Mechanicsburg, Pennsylvania

OMEGA

June Marie Dwyer
Des Moines, Iowa
Diane Lou Griffith
Des Moines, Iowa
Glenna Groseclose
Des Moines, Iowa
Margaret Ann Heft
Oakland, Iowa

Beverly Ann Isebrands
Rock Rapids, Iowa
Cornelia Christine Lunde
Marshalltown, Iowa
Helen Gloria Melaas
Des Moines, Iowa
Ruth Mary Needham
Des Moines, Iowa
Betty Nadine Nicholas
Ree Heights, South Dakota
Marilyn Louise Post
Des Moines, Iowa
Doris Louise Sepal
Clearfield, Utah
Margaret Ann Taylor
Des Moines, Iowa
Mary Margaret Timmerwilke
Des Moines, Iowa
Rose Mary Wallace
Des Moines, Iowa
Lois Elaine Williams
New Providence, Iowa
Sally Marie Winter
Des Moines, Iowa

MU ALPHA

Clara Louise Beck
Indianola, Iowa
Shirley Beryl Duckett
Fontanelle, Iowa
Mary Lincoln Ecroyd
Indianola, Iowa

Dorothy Arlene Henderson
Barrington, Illinois
Ruth Irene McLennan
Earlham, Iowa

MU BETA

Betty Grace Bell
Rockford, Washington
Carolyn Campbell
Puyallup, Washington
Mary Alice Dayharsh
Spokane, Washington
Laura Helen Duncan
Sunnyside, Washington
Evelyn Joanne Fisher
Bellingham, Washington
Jacquelyn Ramona Hansen
Hoquiam, Washington
Frances Dorothy Hunter
Spokane, Washington
Susan Anita Jacobsen
Spokane, Washington
Jacqueline Lynch
Colville, Washington
Mary Lou Monroe
Tacoma, Washington
Sylvia-Lou Newton
Spokane, Washington
Avis Edith Paulson
Spokane, Washington
Theodora Marie Schroeder
Puyallup, Washington
Elizabeth Marie Slaughter
Longview, Washington
Phyllis Gossum Sleeth
Pullman, Washington

MU GAMMA

Mary Ann Campbell
Lincoln, Nebraska
Charma Florence Davies
Delavan, Wisconsin
Kathleen Mae Donovan
Lincoln, Nebraska
Virginia Ann Lange
Lincoln, Nebraska
Patricia Audrey Line
Broken Bow, Nebraska
Florence Toby Nerenberg
Omaha, Nebraska
Ruth Paul Padgett
Lincoln, Nebraska
Marilyn Jeannine Parks
Table Rock, Nebraska
Elaine Putensen
Bloomfield, Nebraska

MU DELTA

Martha Calnan
Troy, Kansas
Juanita Augusta Coy
Kansas City, Missouri
F'lo-Jean Durst
Kansas City, Missouri
Mary A. Guinta
Kansas City, Missouri
Ethna Maxyne Mathisen
Kansas City, Missouri
Julianne Drew McLean
Wichita, Kansas

Rowena June McWhorter
Kansas City, Missouri
Shirley Joan Potter
Pleasanton, Kansas
Betty Anne Rosenstock
Kansas City, Missouri
Gayle Rutherford Sabin
Kansas City, Missouri
Vivian Martha Unruh
Aulne, Kansas

MU EPSILON

Margaret Louise Barnard
Minneapolis, Minnesota
Sally Marie Falkner
Miles City, Montana
Phyllis Editha Heike
Minneapolis, Minnesota
Jackie Ann Maxwell
Great Falls, Montana
Eva Kaye Michalson
Minneapolis, Minnesota
Aldys Ruth Nelson
Minneapolis, Minnesota
Marilyn Jean Norman
Minneapolis, Minnesota
Marjorie Delores Pedersen
Dodge Center, Minnesota
Charlotte Fae Wharton
Alexandria, Minnesota
Marjorie Lois Ziegler
Wayzata, Minnesota

MU ZETA

Rosamond Werner Foster
New Castle, Delaware
Pauline Agnes Hansen
Winslow, Washington
Ruth Aletta Lehmann
Everett, Washington
Merilyn Grace Pratt
Oakesdale, Washington
Margaret June Whitnall
Yakima, Washington
Helen Ida Young
Seattle, Washington

MU ETA

Beverly Faye Campbell
Fair Oaks, California
Doris May Carpenter
Everett, Mass.
Valerie Florence Clinkscales
Fresno, California
Janet Alice DeGroote
Rochester, New York
Joann Elliott
Stockton, California
Rosamay Ferguson
Alameda, California
Sally E. Geistweit
Oakland, California
Audrey Ruth Kline
Willows, California
Georgia Martinelli
Colfax, California
Eleanor Jean McBride
Lindsay, California
Dorothy McLatchy
San Francisco, California

Bertha Melcher
Lodi, California
Patricia Bradbury Meyer
Stockton, California
Lois C. Post
Reno, Nevada
Jane Claire Scott
Stockton, California
Martha Louise Scott
Vallejo, California
Wilma Ruth Talboj
Palo Alto, California
Claire Anne Wilkens
San Francisco, California

MU THETA EPSILON

Katherine Jane Cain
Austin, Texas
Doris Nelle Freudiger
Austin, Texas
Laura Lee Green
Beaumont, Texas
Bettie Virginia Hill
Austin, Texas
Jean Short King
Austin, Texas

MU KAPPA

Louie Jane Ballew
Wilson, Oklahoma
Joan Bates
Konawa, Oklahoma
Virginia Claire Clark
Oklahoma City, Oklahoma
Robertta Alice Heard
Cushing, Oklahoma
Carolyn Hough
Tulsa, Oklahoma
Eleanor Faye Hubbard
Oklahoma City, Oklahoma
Lois Maxine Morris
El Reno, Oklahoma
Catherine Louise Stewart
Norman, Oklahoma

MU MU

Jeanne Bernice Anderson
Partridge, Kansas
Ruth Geraldine Beam
Kinsley, Kansas
Joyce Anne Crippen
Manhattan, Kansas
Jerry Lou Gatz
McPherson, Kansas
Mary Elizabeth Mustard
Abilene, Kansas

MU NU

Joyce Ellen Anderson
St. Johns, Arizona
Lois Adele Benedict
Los Angeles, California
Sylvia Lenore Bengston
Los Angeles, California
Helen Lois Brainard
San Marino, California
Althea Roberta Fraser
Inglewood, California
Joyce Alcene Gardner
Grand Junction, Colorado

Phebe Pavon
Los Angeles, California
Virginia Rosamond Petersen
Los Angeles, California
Helen Yates Rich
Huntington Park, California

MU XI

Elsie Vistoria Alenius
Chicago, Illinois
Billie Frances Braden
Chicago, Illinois
La Delle Estes
Lewisburg, Tennessee
Elaine Florence Greenwall
Elmhurst, Illinois
Lillian Marie Klazura
Gary, Indiana
Katherine Jane Nesmith
Harvey, Illinois
Frances Ruth Reading
Farber, Missouri
Phyllis P. Velander
Skokie, Illinois

MU OMICRON

Wilma Lee Lewis
Batavia, Ohio
Mary Lucille Patronis
Cincinnati, Ohio
Wilma Rahning
Madeira, Ohio
Marguerite Alice Remark
Harrison, Ohio
Tabitha Jane Robbins
Jackson, Ohio
Ruth Kimball Young
Harriman, Tennessee

MU PI

Connie May Conner
St. Marys, Ohio
LeVaughn Irving
Glendale, California
Mary Alys Kuhn
Xenia, Ohio
Rachel Priscilla Roudebush
Columbus, Ohio
Esther Irene Samonte
Laoag, Ilocos Norte, Philippines
Hazel Mae Stratton
Findlay, Ohio
Barbara Alice Wenger
Cleveland Heights, Ohio

MU TAU

M. Jane Buntley
Sioux City, Iowa
Adele Elizabeth Clark
Vermilion, South Dakota
Rosemary Mann
Madison, South Dakota
Rosalie Salome McNeely
Gettysburg, South Dakota
Adeline Nora Schmidt
Vermilion, South Dakota

MU UPSILON

Maria Helen Bryson
San Jose, California

Justine Damon Cleary
Detroit, Michigan
Ruth Ellen Cole
Bridgeport, Connecticut
Rosa Strenge Drake
Fulton, New York
Bennie Garelick
Monroe, Louisiana
Dorothy Evelyn Helmer
Frankfort, New York
Sarah Jane Herron
Rochester, New York
Myrtle Estelle Mauldin
Matherville, Mississippi
Bruill Alice McKinney
Cleveland Height, Ohio
Hazel Ruth Overmiller
Larned, Kansas
Janice Rose Overmiller
Larned, Kansas
Mary Elizabeth Ross
Williamsport, Pennsylvania
Grace Catherine Ruby
Cuyahoga Falls, Ohio
Dorothy Grace Schafenacker
North Wales, Pennsylvania
Janet Marilyn Stewart
Elgin, Illinois
Mary Jeanne vanAppledorn
Rochester, New York

MU PHI

Martha Jane Carman
Sandusky, Ohio
Evelyn Naomi Davis
Canton, Ohio
Gloria Anne Davis
Canton, Ohio
Betty Jane Houtz
Lakewood, Ohio
Nada Pavlovich
Lorain, Ohio
Marie Lucretia Snyder
Berea, Ohio
Betty Jean Vasconi
Greenville, Pennsylvania

MU CHI

Barbara Jo Fox
Raymondville, Texas
Ruth Dexter North
Arlington, Texas
Wanna Ruth Wright
Shawnee, Oklahoma

MU PSI

Margaret Ruth Bell
Cedar Rapids, Iowa
Olive Jane Carano
Oskaloosa, Iowa
Margaret Ann Phinney
Mount Vernon, New York
Mary-Ellen Vaura
Moline, Illinois

PHI GAMMA

Beatrice J. Y. Kwong
Baltimore, Maryland
Priscilla Ann Lyon
Kinston, North Carolina

Norma MacDonald
Baltimore, Maryland
Margaret Boyd McGuire
Baltimore, Maryland
Winifred Jane Ross
Chambersburg, Pennsylvania
Shirley Constance Snyder
Wilkes-Barre, Pennsylvania

PHI EPSILON

Mary Helen Beck
Colorado Springs, Colorado
Kathryn Elaine Fry
Spearville, Kansas
Margaret Jean Keraus
Wakeeney, Kansas
Shirley Joan Prosser
Osage City, Kansas
Mariette Simpson
Detroit, Michigan
Barbara Jean Teats
Colorado Springs, Colorado
Charlotte Louise Walker
Topeka, Kansas

PHI ZETA

Elizabeth Ann Beckman
Albion, Nebraska
Barbara Jean Brewer
Early, Iowa
Karell Elvina Brodsky
Rapid City, South Dakota
Evelyn Virginia Hall
Everly, Iowa
Marilyn Jean Hansen
Sac City, Iowa
Lois Maxine Krogh
Sergeant Bluff, Iowa
Audrey Lucille Laude
Kingsley, Iowa
Nadene Yvonne Law
Lawton, Iowa
Gloria Ellen Peterson
Correstionville, Iowa
Dorothy Jean Pierce
Auburndale, Massachusetts
Alyce Darlyne Schwinderman
Macedonia, Iowa
Jean Arlene Smith
Jefferson, Iowa
Jayne Marie Soiseth
Sioux City, Iowa
Margaret Lorraine Vik
Draper, South Dakota
Margaret Ann Youngstrom
Storm Lake, Iowa

PHI THETA

Alice Gene Beardsley
Fairmount, Indiana
Norma Jean Blankenbaker
Kirkwood, Missouri
Barbara Ann Little
West Liberty, Iowa
Marjorie Moehlenkamp
St. Charles, Missouri
Lucette Anne Stumberg
Austin, Texas
Patricia Hope Tuttle
Mt. Prospect, Illinois

PHI IOTA

Alice Marie Anderson
Canton, South Dakota
Doris Eleanor Erickson
Moorhead, Minnesota
Ruth Elaine Johnshoy
Moorhead, Minnesota
Marian Eleanor Kienholz
Denver, Colorado
Marion Estelle Krageland
Fargo, North Dakota
Barbara Frances Lusk
Fargo, North Dakota
Carol Esther Seby Reishus
Minot, North Dakota

PHI KAPPA

Bettyann Bird
Ferndale, Michigan
Donna Jean Duncan
Berkley, Michigan
Ruth Elenora Fuleihan
Flint, Michigan
Janice Miriam Kempf
Detroit, Michigan
Joan Mary McGillivray
Detroit, Michigan
Elenora Marie McRobbie
Detroit, Michigan
Patricia Dolena Prouse
Detroit, Michigan
Margaret Ruth Reed
Detroit, Michigan
Dorothy Jean Sedick
Detroit, Michigan
Nellie A. Sedorak
Detroit, Michigan
Eleanor Margaret Short
Detroit, Michigan
Helen Jane Thompson
Detroit, Michigan
Shirley Zaft
Detroit, Michigan

PHI LAMBDA

Pauline Jeanette Bristlin
Oregon City, Oregon
Joy La Dene Bushnell
Sherwood, Oregon
Helen Marie Ellis
Corvallis, Oregon
Edith Mae Fairham
Salem, Oregon
Vee Aldene Gould
Newberg, Oregon
Melva June Williamson
Monmouth, Oregon

PHI MU

Genevieve Dorraine Ahlgren
Ripon, California
Emily Rose Baptista
Oakland, California
Betty Virginia Dilg
Oakland, California
Virginia-Luise Howe
San Mateo, California
Ruth Helen Kruse
Palo Alto, California
Colleen McCann
Salinas, California

Robert Mitchell
Taft, California
Faye Florena Peoples
Burlingame, California
Mary Ellen Pea
Santa Clara, California
Jane Sarah Pope
Modesto, California
Elizabeth M. Robinson
Palo Alto, California
Alwine Greta Sorensen
San Mateo, California
Barbara Joyce Wells
San Jose, California
Ardis Irene Whitehead
Santa Rosa, California

PHI NU

Elizabeth Field Burr
Piedmont, California
Nancy Lucile Curran
Pomona, California
Sally Diane Deutchman
Beverly Hills, California
Evelyn Dorothy Geosits
North Hollywood, California
Dorothy Jean Graham
Venice, California
Vivian Joyce Holly
Culver City, California
Lou Ella Rankin
North Hollywood, California
Jean Shubin
Bell, California
Doris Gulbransen Stanton
Santa Monica, California
Pauline Turrill
Los Angeles, California
Virginia Henley Warwick
Los Angeles, California

PHI XI

Katharine Louise Arnold
Winchester, Virginia
Alva Nell Beacham
Palestine, Texas
Ernestine Florence Biddie
Seguin, Texas
Nancy Elaine Biles
Fort Worth, Texas
Annie B. Combs
El Dorado, Arkansas
Mary Frances Crumpler
Magnolia, Arkansas
Violet Jane Daniel
Sapulpa, Oklahoma
Cynthia Mae Day
Winslow, Arizona
Emma Sue Depwe
Orange, Texas
Martha Louise Granstaff
Weatherford, Texas
Carol Ellen Hodges
Houston, Texas
Elynor Rose Jarosek
Waco, Texas
Mary Lynne Leachman
Dallas, Texas
Mary Edith Loyd
Ballinger, Texas
Josephine Troy Maguire
Ocoee, Florida
Maxine Ann McLendon
Pharr, Texas

Georgene Vera Myers
York, Nebraska
Virginia Kathleen Nash
Ryan, Oklahoma
Wanda Nelson
Brenham, Texas
Margaret Elaine Pirtle
El Dorado, Arkansas
Shirley Belle Polk
Kansas City, Missouri
Virginia Louise Powell
San Antonio, Texas
Sue Wilson Ratteree
Waco, Texas
Frances Lois Roach
Richmond, Texas
Janice Rogers
Wellington, Kansas
Nancy Louise Scruggs
San Antonio, Texas
Dorothy Nell Sharp
Dallas, Texas
Mary Ila Ullom
Sweetwater, Texas
Era Jo Upshaw
Stamford, Texas
Nina Jean Wallis
Dallas, Texas
Colleen Ward
Tulia, Texas

PHI OMICRON

Florence Evelyn Bates
Painesville, Ohio
Norma Lucille Benuska
Lakewood, Ohio
Lois Jane Hardy
Rushford, New York
Ruth Elizabeth McCamman
Erie, Pennsylvania
Frances Shirley Nichols
Salina, Kansas
Ellen Cleminshaw Weaver
Chagrin Falls, Ohio
Marjorie Louise Zimmerman
Cleveland Heights, Ohio

PHI PI

Beverly Coldsnow
Wichita, Kansas
Gretchen Dalley
Wichita, Kansas
Tennie Marie Dyer
Lamesa, Texas
Constance Gloria Fettes
Wellington, Kansas
Marjorie Ann Raders
Edinburg, Texas
Edna Mae Stone
Philadelphia, Pennsylvania
Mary Lu Taggart
Wichita, Kansas

PHI RHO

Judith Lee Dudley
Minneapolis, Minnesota
Virginia Le Lull
Minneapolis, Minnesota
Connie Mae Sullivan
Minneapolis, Minnesota

PHI SIGMA

Bernice Frances Bielawa
Chicago, Illinois

Nancy Lee Davis
East Chicago, Indiana
Catherine Frances Haseman
Chicago, Illinois
Marie Eucharista Radzin
Chicago, Illinois

PHI TAU

Olna Virginia Broadfoot
Dallas, Texas
Jennie Elizabeth Cope
McCamey, Texas
Jeaneane Jo Dowis
Grapevine, Texas
Katherine Emilie Duce
Corpus Christi, Texas
Elaine Dupuis
Port Arthur, Texas
Eda Ruth Friedline
Grand Saline, Texas
Katherine Inez McNeill
Houston, Texas
Nannette Reese
Dallas, Texas
Elizabeth Anne Schafer
Fort Worth, Texas
Mary Helen Snow
Harlingen, Texas
Dorothy Treybig
San Antonio, Texas

PHI UPSILON

Maria-Pia Antonelli
Brighton, Massachusetts
Clare Alexander
Allston, Massachusetts
Anne Asadourian
Manchester, New Hampshire
Elizabeth Pinder Bailey
East Providence, Rhode Island
Margaret Ellen Bresnahan
Proctor, Vermont
Patricia Carolyn Brown
Woods Hole, Massachusetts
Ruth Elizabeth Burckel
Methuen, Massachusetts
Mary Louise Crawford
Pittsfield, Maine
Dorothy May Cutting
Sudbury, Massachusetts
Rose Theresa Desandis
Worcester, Massachusetts
Barbara Gavin Dower
Wakefield, Massachusetts
Dorothy Rose Ferry
Westdale, Massachusetts
Cynthia Coburn Fox
Dracut, Massachusetts
Mary Elizabeth Frost
Winchester, New Hampshire
Arlene Elizabeth Gerstenberger
Lawrence, Massachusetts
Marion Isabell Horwood
Winchester, Massachusetts
Priscilla Anne Huse
Lowell, Massachusetts
Anne Patricia Kane
Lawrence, Massachusetts
Marjorie Parker Kloppenburg
Manchester, Connecticut
Glori Verna MacKay
Worcester, Massachusetts

Bette Ann Mahoney
Framingham, Massachusetts
Lillian Gertrude Murray
Boston, Massachusetts
Jean Elaine Nickerson
Dorchester, Massachusetts
Gloria Jean Richmond
Brookline, Massachusetts
Irene Pacheco Silvia
Fall River, Massachusetts
Clivetta Lois Stuart
Memphis, Tennessee
Lois True Thurlow
Hawthorne, Massachusetts
Betty Anne Tozier
Medford, Massachusetts
Evelyn Ann Velander
Worcester, Massachusetts

PHI PHI

Marjorie May Fairchild
Kansas City, Missouri
Norma Jean High
Kansas City, Missouri
Betty Jeanne Highley
Kansas City, Missouri
Marie Mistele
Kansas City, Missouri
Verna Murfin
Kansas City, Missouri
Leona Rae Peltzman
Kansas City, Missouri
Marian Sorg
Kansas City, Missouri
Virginia Markley Voigtlander
Kansas City, Missouri
Helen Frances Woodruff
Kansas City, Missouri
Karen York
Kansas City, Missouri

PHI CHI

Furn Elinor Coe
Fresno, California
Barbara Jeanne Finch
Fresno, California
Lillian Elinor Harmon
Fresno, California
Eleanor Rosalie Heiskell
Fresno, California
Patricia Ann Heiskell
Fresno, California
Helena Mary Kaprielian
Fresno, California
Lorraine June Kaprielian
Fresno, California
Helen Keiko Kazato
Fresno, California
Mary Louise Kohler
Fresno, California
Kathryn Louise Taylor
Fresno, California
Janet Mae Wallin
Kingsbury, California

PHI PSI

Florence Vivian Archibald
Arlington, Virginia
Muriel Harmon
Newberry, South Carolina

Virginia Anne Lynch
Petersburg, Virginia
Jane Hodgson McCullough
Alexandria, Virginia
Mary Lou Vollmer
Norfolk, Virginia
Dorothy Rose Wehrle
Charleston, West Virginia
Mary Felicia White
Springfield, Virginia
Harriet Ann Willson
Arlington, Virginia

PHI OMEGA

Dorothy Eileen Haas
New Wilmington, Pennsylvania
Virginia Lee Hilke
New Wilmington, Pennsylvania
Shirley Elizabeth Russell
Colliersville, New York
Doris Ann Wanamaker
New Wilmington, Pennsylvania
Charlotte Elaine Weimer
New Wilmington, Pennsylvania

EPSILON ALPHA

Mary Margaret Hanlon
Aitkin, Minnesota
Sister Ann Harvey
Saint Paul, Minnesota
Patricia Marie Koempel
Saint Paul, Minnesota
Ruth Annette Koempel
Saint Paul, Minnesota
Anna Marie Mahrt
Custer, South Dakota
Margaret Gertrude Sheridan
Saint Paul, Minnesota
Marian Rita Welte
Crookston, Minnesota

EPSILON BETA

Sarah Elizabeth Barber
Virginia Brossius
Margaret S. Holt
Joanne Macaulay
Margaret Peters
Gloria Snelling
Alice Womack

EPSILON GAMMA

Mary Elizabeth Bailey
Laurel, Mississippi
Julia Piatt Bedinger
Asheville, North Carolina
Marilyn Jean Black
Kerrville, Texas
Virginia Nann Blossom
Forest, Mississippi
Frances Neal Boyd
Greenwood, Mississippi
Margaret Eleanor Brown
Canton, Mississippi
Doris Mae Catlin
Paducah, Kentucky
Jimmy Lee Doss
Houston, Mississippi
Mattie Hearon Ellis
Winona, Mississippi

Sara Violet Everett
Yazoo City, Mississippi
Doris Fenton
Rolling Fork, Mississippi
Rosa Wyse Forde
Goodman, Mississippi
Velta Mae Fulmer
Logansport, Louisiana
Janie Louise Gill
Horn Lake, Mississippi
Elaine Christine Jenkins
Union, Mississippi
Eva Gene Kersh
Brandon, Mississippi
Cynthia Ellen Knight
Inverness, Mississippi
Mary Anne Martin
Brandon, Mississippi
Lucy Dorris Matthews
Vaughan, Mississippi
Edwina Elizabeth May
Jackson, Mississippi
Patti George Pieri
Biloxi, Mississippi
Evelyn Roland
Woodville, Mississippi
Mary Taylor Sandefur
Jackson, Mississippi
Sue Randolph Stockett
Woodville, Mississippi
Ruby Sara Sumrall
Indianola, Mississippi
Margaret Clayton Williams
Jackson, Mississippi

EPSILON DELTA

Gloria Elaine Anderson
Portland, Oregon
Patricia Irene Barnard
Portland, Oregon
Carolyn Elizabeth Berkey
Portland, Oregon
Maude Irene Bohlman
Portland, Oregon
Gloria Kibbee Cooke
Portland, Oregon
Nancy Jeanne Dewey
Portland, Oregon
Grace Laurine Hoyt
Portland, Oregon
Loretta Elaine Kalmbach
Portland, Oregon
Dorothy Faye Kirkwood
Beaverton, Oregon
Lois Karen Lafky
Tigard, Oregon
Virginia Lee Muhle
McMinnville, Oregon
Patricia Jeanne Osborn
Portland, Oregon
Patricia Louise Pike
Portland, Oregon
Janet Ruth Pohlman
Portland, Oregon
Marian Margaret Ruschhoff
Portland, Oregon
Billie Odylene Ryburn
Portland, Oregon
Patricia Elizabeth Steen
Portland, Oregon
Margaret Notz Steinmetz
Portland, Oregon

Abigail Trask
Cottage Grove, Oregon
Frances Berry Turrell
Portland, Oregon
Shirley Haga Zumwalt
Kellogg Park, Oregon

Initiated at 1946 Convention
under sponsorship of BETA
Mary Wesley Craig
New York, New York
Eva Iaci
New York, New York

Edith Eskbridge Nast
New Rochelle, New York
Lillian Rehberg
Yonkers, New York
Geraldine Spatzianni
New York, New York

Total Initiates 1946-47—581

Los Angeles Alumnae Chapter

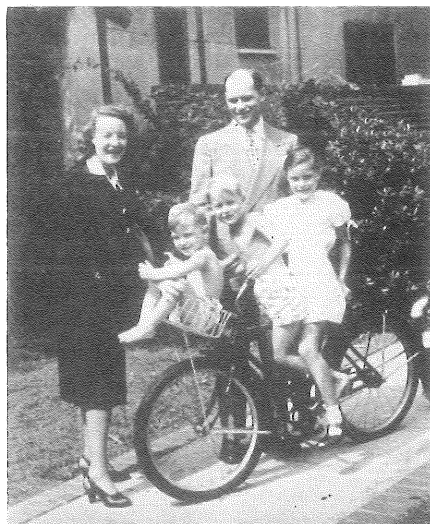
Winner in Magazine Sales for Gad's Hill

△ *Life* magazine recently had an article entitled *Woman's Dilemma* which suggested that American women need an outside activity to be attractive to their husbands or husbands-to-be. I suggest getting magazine subscriptions for Mu Phi to swell our Gad's Hill fund.

You make new friends and learn amazing things about your old friends. It's surprising, but many people feel anonymous behind a telephone, which is the quickest and most efficient subscription getter. A prominent Mu Phi musician subscribes to *Popular Mechanics* and tries out all the new gadgets between Handel and Sowerby.

You'll agree with the magazine department "People are Funny." A minister gave me five gift subscriptions to the *Reader's Digest* while berating the magazine as an instrument of the devil. Obviously he enjoys his work.

It is thrilling to discover sources of information. One customer thanks me yet for introducing her to the Friday edition of the *New York Sun*. The department on antiques is her bible. Mothers have been relieved to discover funny books which are approved by *Parents' Magazine*

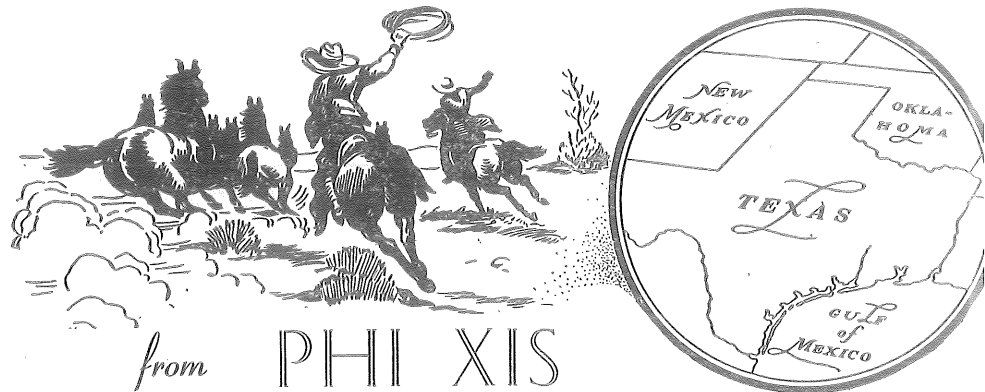


Elise Arbuthnot Byler, Chairman, says: "All this, a singing job and getting magazine subscriptions for Mu Phi makes life interesting."

and leading educators. The *New York Times* Sunday edition with "News of the Week in Review" is exactly what the men want, and the ads and theater section keep the women busy. The magazines on glamour have solved many a deb's tragedy.

In spite of all the good you're doing and all the fun you're having, it only takes about three hours a week during the rush season and much less than that later.—ELISE ARBUTHNOT BYLER, *Magazine Chairman, Los Angeles Alumnae Chapter.*

★ IDEAS ★



from PHI XI Deep in the Heart of Texas CONVENTION - PROGRAM - BROADCAST

BY LENA FRANCES LOONEY

△ PHI XI CHAPTER of Mu Phi Epsilon at Baylor University, Waco, Texas, entertained Texas Mu Phi chapters at a convention February 22 and 23. Delegates from Mu Chi, Mu Theta Epsilon and Phi Tau Chapters arrived in Waco Saturday afternoon, February 22. The convention opened that evening in Waco Hall with a musical program which was open to the public.

After the program a lovely reception was held at the home of Mr. and Mrs. Barney Garrett, patrons of Phi Xi chapter. The convention closed Sunday morning, February 23, with a breakfast at the Roosevelt Hotel. The Phi Xi Red-Headed Trio composed of Nancy Biles, Shirley Polk, and Mary Ila Ullom sang "A Mu Phi Girl."

Every girl who attended the convention seemed to leave with a determination to go back to her chap-

ter and start working immediately on new ideas she had gained from associating with other Texas Mu Phis. It was certainly an inspiration to be a part of the convention and the Texas girls really feel like "sisters" now. The idea was so well received that Mu Theta Epsilon chapter has invited the Texas girls to meet in Austin next year with the hope that the convention will continue each year.

CHAPEL PROGRAM and BROADCAST
Immediately after the convention, Phi Xi chapter began work on a university chapel program which was presented March 31 before the student body and broadcast over station KWBU. The stage setting was that of a garden party and all of the Mu Phi girls who were formally dressed appeared on the stage. The numbers were announced in the following manner:

SCRIPT

Narrator: From Waco Hall on the campus of century-old Baylor University we bring you the regular chapel program being presented today by Mu Phi Epsilon, Natipnal Music Sorority—Ladies and Gentlemen—the Girls.

Girls: "Dub Song"

Narrator: That's the Dub Song—I don't know what Dub means—the girls won't tell me—I'm not a member of the sorority—To begin the program let's use the words of the Dub Song to introduce these girls. Kit Arnold says—

I'm going to sing you a little song,

The performance of which will not take long—

Kit sings—"Adoration," by Boyd.

Kit Arnold: Boyd—"Adoration."

Narrator: Now if you allow for worry and tears I'm afraid this song would last for years. It's a nostalgic tune and one about love—"Whispering" with the Red-Head Trio.

Trio: "Whispering"

Narrator: Ann Jackson listened, thought, wept and prayed—for an

inspiration that could be played— And alas she found it—and here she is playing Kriesler's "Sicilienne and Rigandon."

Ann Jackson: Kreisler—"Sicilienne and Rigandon."

Narrator: The truth about Janice Rogers is very plain to see. Now she may be no Cyril Scott or Claude Debussy—But she's a lovely fixture in any living room—and here she is to play Ravel's "Pavane."

Janice Rogers: Ravel—"Pavane."

Narrator: In announcing for the Mu Phi cause which forces me right here to pause. . . . They say I've left out one whom we just can't afford to miss—Our regular chapel organist, Mary'O. Thompson to play Scherzo by Widor.

Mary'O. T.: Widor—"Scherzo."

Narrator: Well, there you've heard it . . . the Mu Phi Dub Song—all but five lines about Mu Phi Epsilon . . . so they want to tell you how proud they feel before Mu Phi to humbly kneel . . . for even though we've quipped and made fun, they love dear Mu Phi Epsilon.

Girls: Hum

Music, Friendship and Harmony at Texas Mu Phi Epsilon Convention, Baylor University, Waco, Texas. Left to right: Mu Theta Epsilon, Texas U. in Austin; Mu Chi, Southern Methodist U. in Dallas; Phi Taus, North Texas State Teacher's College in Denton. From the center to right and in front, Phi Xis, the hostess chapter.



Convention Musicale

PHI XI CHAPTER OF BAYLOR UNIVERSITY

presents

THE TEXAS CHAPTERS OF MU PHI EPSILON

Waco Hall, February 22, 1947, 8:15 p.m.

PROGRAM

Triple Fugue in Eb on "St. Anne"	Bach
Jane Bell, organist, Phi Xi	
Recitative: And God Said with Verdure Clad from The Creation	Haydn
*Long Remembrance	Kilpatrick
Bonjour Seizon	Delibes
A Memory	Ganz
Martha Holmes, vocalist; Marjorie Poole, accompanist. Mu Chi	
Four Preludes	Shostakovich
Toccatà	Prokofieff
Lois Zabel, pianist. Mu Theta Epsilon	
Se tu ma mi, se sospiri	Pergolesi
At the Well	Hageman
Arleta Bowles, vocalist; LaVerne Hunt, accompanist. Phi Tau	
Adagio from Organ Toccatà in C	Bach
Aubade from Le Roi D'ys	Lalo
La Fileuse	Dunkler
Betty Smith, cellist; Geraldine Sypert, accompanist. Phi Xi	
The Engulfed Cathedral	Debussy
LaVerne Hunt, pianist. Phi Tau	
Romance	Bunn
Georgene Myers, flutist; Richard L. Morse, accompanist. Phi Xi	
Una Voce poco fa, from The Barber of Seville	Rossini
Ann Ekins, vocalist. Mu Theta Epsilon	
**Teddy Bear Suite	Busby
Forest Murmurs	Liszt
Toccatà	Debussy
Jane Brown, pianist. Mu Chi	

* Composed by a composition teacher at S.M.U.

**This Suite won the Mu Phi Epsilon composition award for piano solo this year.

USHERS

Anne Jackson, Mildred Blackmon, Mary Edith Loyd, Jo Maguire

MU PHIS IN PEABODY OPERA

(CONTINUED FROM PAGE 23)

were also Mu Phis. They sang what amounted to major roles, being sisters or nuns who emerged from the chorus from time to time as part of the continuity of the story which is primarily Sister Angelica's. These singers were Christine Behm, Erma Wolf Ihrle, Vera Schwartz, Lola Sanders, Ella Schleuness, Catherine Schottler, and Betty Lou Everett, who also acted as assistant to the producer, Dr. Lert.

In years to come one can expect Mu Phi Epsilon to participate just

as strongly as now in all that occurs at Peabody Conservatory. And when one looks back at that first big road performance of the Opera Class of Curtis Institute—"Amelia Goes to the Ball" with Florence Kirk and Edwina Eustice here in Baltimore, we can expect that the same type of thing can happen to our girls year in and year out. Mu Phis can expect the opportunity to be heard and to progress through their affiliations with the Peabody Opera Class—and all that it stands for.

Tribute to ETELKA EVANS



△ AFTER nine years of devoted service to the promotion of the Edgar Stillman Kelley Junior Scholarship, our Mu Phi sister, Etelka Evans, has this year resigned as its active National Chairman. Concerning Etelka's work Mrs. Edgar Stillman Kelley has written me as follows:

"To find such a project might seem a simple thing to do and at first none of us dreamed that it would have such far-reaching results. It is building up a memorial to my husband beyond our greatest expectations, while opening the door to ever larger opportunity and increasing inspiration to the many talented young Americans the country over."

"My gratitude to and admiration for ETELKA EVANS, a great woman."

From the years 1937-1941 Etelka was head of the Junior division of the National Federation of Music Clubs which then numbered some sixty thousand members between the ages of five and eighteen.

In traveling from one state to another during the first part of her incumbency Etelka heard many talented children and "no money to continue their musical education" was the usual story. Therefore Etelka determined to start a project which should offer a scholarship to children under the age of sixteen years. In the Fall of 1938, having

made careful plans with the assistance of Julia Fuqua Ober, at that time president of the N.F.M.C., Etelka presented her project to the board of directors. The plan was to offer a scholarship of two hundred and fifty dollars to be awarded by contest throughout the nation, each winner privileged to hold the scholarship for three years, provided he showed evidence of progress each year. Etelka asked permission to name the scholarship in honor of Edgar Stillman Kelley, at that time dean of American composers.

The project was unanimously accepted and one hundred dollars was voted by the Board to Etelka as a nucleus for the scholarship. Since then eight winners have been selected and four thousand, five hundred dollars has been paid out in scholarships.

It is the earnest wish and prayer of Etelka that this fund shall continue to grow and ever be a beautiful memorial to that revered American composer—Edgar Stillman Kelley.—BERTHA KREHBIEL.

CHAPTER HONORS 1946-47

★ BETA: *MU PHI EPSILON* Scholarship Medal: Helen Orpen.

★ ZETA: *Pi Kappa Lambda*: Marcia Hamilton, awarded Van Denman plaque; Romaine Thomas Adams; Composer of music for annual Campus show: Carol Croup.

★ THETA: *Women of Achievement of St. Louis*, Jean Browning, at present leading contralto of San Carlo Opera Company.

★ IOTA ALPHA: *Freshman Scholarship Award*: Bette Lemler; *Sophomore Scholarship Award*, Elsie Gulyanics.

★ KAPPA: Contest held by Fabian Sevitzyk, Conductor of Indianapolis Symphony Orchestra, Barbara Bailey.

★ MU: *Who's Who in American Universities and Colleges*, Nancy Goode; *Senior Honor Society*, Clair Price.

★ NU: *MU PHI EPSILON Patroness Scholarship*, Johnette King; *Beta Gamma Sigma*, Jean Girts, Lois Roeder; *Pi Lambda Theta*, Jean Girts; Piano Soloist with University Concert Band, Johnette King; *State Fee Scholarship*, Elizabeth Pollock, Virginia Burt; Joanne Twedt, Helen Hudson, Lina Lou Pope, Dorothy Schaer; Virgene Lindley, Jerine Newhouse; Violin Soloist, Women's Choral Club Concert, Mary Kapp Allton; *Alpha Gamma Delta*; Bever-

ly Howard; *Orchesis*, Beverly Howard.

★ XI: *Pi Lambda Theta*, Marjorie Parmiter, Lylas Gugler, Caroline Morriss, Beverly Reitz Evans; *Mortar Board*, Helen Howe; *Pi Kappa Lambda*, Marjean Carr; *Highest Scholarship Sophomore Class*, Betty Barkis; *Highest Scholarship Junior Class*, Betty Barkis; *Pi Kappa Lambda Award* for outstanding Sophomore for the year, Maxine Dunkelberg.

★ SIGMA: *Pi Kappa Lambda*, Marilyn Penner; Highest grade average in *Music School Junior Class*, Marilyn Penner; *Professional Panhellenic Council*, Cathryn Detweiler: One of the musical directors in the *University Musicale* and wrote some of the music used in the fall water show, Sue Eckley; *Alpha Lambda Delta*, Wilma Andrew (pledge), June Hefty (pledge) and Jennie Slater (pledge).

★ TAU: *Phi Beta Kappa*, Dorothy Davis; *Matrix Table*, Ruth Dunlap; *Honors Convocation*, Jeanne Dupue; *Repertory Playhouse* singing lead, June Beard; *Woman Band Conductor* on University staff, Rachel Swarner; *Alumni Scholarship Award*, Jean Schumacher.

★ PSI: *Alpha Kappa Delta*, Dolores Marie Yacos; *Pi Sigma Alpha*, Marcia Huckins, Nancy Derkacz; *Dr. Paul S. Stolz Award*, Mary Elizabeth Green; *Women's Glee Club*,

Dorothy Gleckner, Alice Bogdanoff, Mary Elizabeth Green; *Mortar Board*, Dorothy Gotterer; Highest Honor on Campus, *President of Women's Student Government Association*, Dorothy Gotterer.

★ OMEGA: *Who's Who in American Universities and Colleges*, Leslie Davis Berg, LaVerne Sedrel Briggs; Margaret Davis, Lois Fish; *Sieve and Shears*, LaVerne Sedrel Briggs, Nancy Cook, Margaret Davis, Eleanor Evans, Lois Fish, Shirley Buford Heater; Dorrie Shearer; *Drake's Who's Who*, LaVerne Sedrel Briggs; *Alpha Kappa Lambda*, Margaret Davis; *Fed. Young Artists' Concerts*, Margaret Davis; *Pi Kappa Lambda*, Margaret Davis; *Delta Gamma*, Shirley Buford Heater; *Kappa Alpha Theta*, Dorrie Shearer; *Social Panhellenic*, Shirley Buford Heater, Dorrie Shearer; *Fed. Student Musicians' Contest*, Dorrie Shearer.

★ MU ALPHA: *Who's Who in American Colleges and Universities*, Mary Lou Boyles.

★ MU GAMMA: *Mortar Board*, Mary Ann Campbell.

★ MU DELTA: Marlys Ann Waters, soprano, winner of *Tri-State Federation Award*, first place in Women's Voices Division; and first place in women's voices *Kansas City Musical Clubs Contest*.

★ MU EPSILON: "Stairway to Stardom" *Contest over WCCO*, Charlotte Wharton; *Thursday Musical's Senior Voice Contest*, Marilyn Anderson Norman; *MU PHI EPSILON Scholarship*, Margaret Stableski; *MU PHI EPSILON Music Award Medal*, Marilyn Anderson Norman; *soloists with MacPhail Orchestra*, Thelma Larson Jacobson, Mary Anne Simard, Charlotte

Wharton, Marilyn Anderson Norman.

★ MU ETA: *Who's Who in American Colleges and Universities*, Donna Perrott, Marilynne Burger; *All College Honor Society*, Donna Perrott; *Pi Kappa Lambda*, Janet DeGroot.

★ MU THETA EPSILON: *Wednesday Morning Music Club of Austin*, Betty Jane Steele, Betty Hill, Lois Zauhl.

★ MU KAPPA: *Elsworth-Dungan Award*, Joan Bates.

★ MU NU: *Ebell Club Scholarship Key*, Jean Rotzler; *Pi Kappa Lambda*, Jean Rotzler, Sylvia Bengston.

★ MU XI: *Commencement Contest*, Elsie Alenius; *Young Artists' Contest in Organ*, Lorraine Storz; *S.A.I. Piano Scholarship Contest*, Adele Tilson.

★ MU OMICRON: *Mu Phi Epsilon Prize*, Wilma Rahning.

★ MU PI: *Phi Beta Kappa*, Marilyn Sidnell, Gertrude Beattie; *Judicial Pres.*, *Women's Student Government*, Sara Lou Benjamin; *Pi Kappa Lambda*, Lenore Pyle.

★ MU TAU: *MU PHI EPSILON ACHIEVEMENT AWARD*, Rosemary Mann; *Cum laude*, Janet Robinson Richardson.

★ MU PHI: *Magna cum laude*, Mary Jean Brown; *Cum laude*, Jean F. Churchill, Mabel Arlene Ferver, Ellen Mary Grissinger. *Ohio Federation of Music Clubs*, first place, Mary K. Friedly; regional contest at Indianapolis, second place, Mary K. Friedly.

★ MU PSI: *Who's Who in American Colleges and Universities*, Vida Rumbaugh.

★ PHI GAMMA: *Voice Award at Commencement*, Catherine Rowe.

★ PHI EPSILON: *Who's Who in American Colleges and Universities*, Ellinor Brown Porter, Lorena Joyce Brown, Marjorie Ingold; *Summa Cum Laude*, Ellinor Brown Porter; *Athena cup and Athena Honor Society*, Ellinor Brown Porter; *Athena Honor Society*, Lorena Joyce Brown; *Honor Roll*, Margaret Keraus; *Cum Laude*, Lorena Joyce Brown; "The Messiah," Lorena Joyce Brown, Organist, Lucile Porter, Soprano; *Emporia Symphony Orchestra*, Constance Brown (alumna), guest soloist.

★ PHI ZETA: *Who's Who in American Universities and Colleges*, Barbara Schmidt, Lois McCallum; attendant to Homecoming Queen 1947, Barbara Schmidt; *National Methodist Scholarship*, Lois McCallum.

★ PHI THETA: *National Federation of Music Clubs of Missouri*, Lucrette Stumberg.

★ PHI IOTA: *Alpha Society*, Dorothy Mae Gilbertson; *North Dakota State Federation of Young Artists Contest*, Lois McKenzie; *Senior Medal Award*, Dorothy Mae Gilbertson; *Sophomore Scholarship*, Marian Krageland; *Daveau Music Scholarship*, Marinda Thompson, Phoebe Berge, Mary Lou Wenberg, Barbara Lusk, Marian Kienholz.

★ PHI LAMBDA: *4-Year Scholarship*, Geraldine Schmoker, Edith Fairham; *1-Year Scholarship*, Aldene Gould, Katherine Schissler, Joy Bushnell.

★ PHI NU: *J.O. Downing Schol-*

arship, Jean Shubin; *State of California Scholarship*, Ellen Halopoff; *Delta Epsilon*, Theresa Welch; *Phi Beta Kappa*, Pauline Turrill; *Alumni Contest*, Esther Wolf, Phyllis Hausman; *Music Workshop*, Ramona DeBra, Adeline Ostrowsky, Virginia Warwick; *Teaching Assistant*, Natalie Limoneck; *San Carlos Opera Company*, Helen Limneos.

★ PHI OMICRON: *Clemens Award in Music*, Louis Zimmerman; *Ranney Scholarship*, Louise Zimmerman; *Phi Beta Kappa*, Martha Immel.

★ PHI PI: *Kappa Delta Pi*, Melba Bram, Gloria Browning Fouts, Dorothy Bruce, Abbie Marie Slentz, Mary Frances Titus, Nancy Glenn; *Women's Federation of Music Clubs*, Gloria Fitters; *May Queen*, Dorothy Bruce; *Outstanding Senior*, Gloria Browning Fouts; *Alumnae Chapter Scholarship*, Mary Frances Titus.

★ PHI UPSILON: *Who's Who in American Universities and Colleges*, Gloria Savcheff; *Boston University Hall of Fame*, Gloria Savcheff; *Scarlet Key*, Gloria Savcheff, Doris Hilton Lavelly; *Freshman Award*, Gloria MacKay; *Junior Scholarship*, Betty Bailey; *Dean's List*, Doris Hilton Lavelly; *Alpha Phi*, Doris Hilton Lavelly.

★ PHI PHI: *S.A.I. Composition Contest for 1946-1947*, Betty Highley.

★ PHI PSI: *Dean's List*, Betty Bane (4 years), Sylvia Francis (4 years), Nelle Clarke (4 years); *Alpha Phi Sigma*, Betty Fulk, Jane Sumpter, Jane McCullough, Irene Taylor, Sylvia Francis, Anne Haley, Jean Kirby, Muriel Harmon, Lois Saunier, Donna Littman, Nelle Clarke, Virginia Crowder, Nora

Bryant; *Band Manager*, Betty Bane, Anne Haley; *President of Glee Club*, Jane Sumpter; *Cap and Gown*, Irene Taylor, Sylvia Francis, Muriel Harmon, Lois Saunier; *French Club*, Jane Sumpter; *Council of Baptist Student Union*, Jane Sumpter; *Science Club*, Jane McCullough; *Athletic Association*, Jane McCullough; *Who's Who Among American Universities and Colleges*, Irene Taylor, Sylvia Francis, Jean Kirby, Nora Bryant; *Senior Honor Society*, Irene Taylor; *Alpha Tau Pi*, Irene Taylor; *Student Government Betty Lewis House President*, Irene Taylor; *Winner 1945-46 Song Contest*, Irene Taylor; *Alpha Phi Sigma Award*, Sylvia Francis; *Student Government House President of Virginia*, Jean Kirby; *Concert mistress of Orchestra*, Ruth Sargent; *May Court*, Muriel Harmon, Lois Saunier; *Pres. Junior Class*, Lois Saunier; *President 1947-48 Senior Class*, Lois Saunier; *Beauty Contest MΦE Representative*, Lois Saunier; *Composer Winning Song Contest 1946-1947*, Nora Bryant.

★ **EPSILON ALPHA:** *Schubert Club Award*, Patricia Koempel (piano), Ruth Koempal (violin); *Alpha Phi Epsilon*, Helen Mahl; *Campus Secretarial Club*, Helen Mahl; *Campus Music Club*, Gloria Krautkremer; *Rosebearer College Graduation 1945*, Gloria Krautkremer (highest non-academic honor for juniors); *Mississippi Valley Festival, 1945*, Helen Spaeth.

★ **EPSILON BETA:** *Salutatorian Class 1947*, Laura Sanford; *Boarding Student Council*, Doris Turner, Laura Sanford; *Sigma Mu*, Laura Sanford; *Senior Superlative*, Travis Wylie; *Dean's List*, Travis Wylie; *Orientation Committee*, Travis Wy-

lie; *Lead in "Pirates of Penzance,"* Travis Wylie; *Lead in "The Mikado,"* Doris Turner; *Tennis Championship*, Kitty Cooper (4 years); *Letter Club*, Kitty Cooper (4 years); *International Relations Club*, Kitty Cooper.

★ **EPSILON GAMMA:** *Who's Who in American Colleges and Universities*, Rosa Wyse Forde; *Honor Graduate*, Rosa Wyse Forde, Margaret Eleanor Brown; *Secretary Student Body*, Rosa Wyse Forde; *MΦE Scholarship*, Margaret Eleanor Brown; *Cristen Award in Voice for 1945-1946*, Frances Boyd; *President Senior Class*, Margaret Williams; *Business Manager "Belhaven Miss,"* Cynthia Knight; *1st President Epsilon Gamma Chapter of MU PHI EPSILON*, Cynthia Elaine Knight.

ALUMNAE

Chapter Honors, 1946-1947

Ann Arbor: Dorothy Ornst Feldman sang with Philharmonic at Saratoga Springs Festival, with Detroit Oratorio Society and Cleveland Chorus.

Chicago: Marie Morrissey Keith was elected President of the National Federation of Music Clubs.

Cincinnati: Bertha Krehbiel and Etelka Evans have become life members of the National Federation of Music Clubs.

Cleveland: Pres. Fortnightly Musical Club, Thelma Goldsword; Chairman International Relations of Ohio State Federation of Music Clubs, Enola Burdick; Vice President, Ohio Federation of Music Clubs, Lucretia Valentine; Pres. Music and Drama and Chm. Audition Comm. of Fortnightly, Estelle Miller; Chm. Lake-wood Program-Lecture Comm.

Cleveland Orchestra, Doris Quinn; Sec. Altrusa Club and representative to Nat'l., Panhellenic from Theta Upsilon, Beatrice Moore.

Detroit: Marian Jewell, Ex. Board, Tuesday Musicalé; Doris Houghton, Ex. and Rec. Secretary, Tuesday Musicale.

Indianapolis: Featured in *Indianapolis Star* as "A Woman Who Has Achieved," Jessamine Barclay Fitch.

New York City; Helen Traubel, who keeps active membership; Louise Meiszner, pianist, who has appeared with several symphony orchestras as soloist and 1947 Town Hall Concert artist; other Town Hall concerts by Elisabeth Wysor, Mary Frances Lehnerts, Mina Earnest, Caroline Thomas; Paula Lenchner, signed with Chicago Opera for fall, 1947.

St. Louis: Thelma Carroll, who has been Pres. Women's Symphony Society for 2 years; Ruth Johnson, Writer's Club.

Toledo: Frances Hamlin, for leadership of the most successful County Concert Series campaign ever held in Lancaster, Ohio, assuring future continuance.

Dallas: Dora Poteet, Head Organ Dept. S.M.U., chosen to play opening recital at June Convention of National Guild of Organists.

SUMMER, 1947

Mu Phis on the faculty at the University of Michigan; Top row, left to right: Dorothy James, Mary Fishburn (friend), Marian Owen, Ava Case, Louise Cuyler. Bottom row: Helen Titus, Thelma Leins (seated), Mary Muldowney (friend).

Oklahoma City: Merle Montgomery, specialist in music theory, now employed by Carl Fischer, Inc., lectures on The Schillinger System of Musical Composition.

Beverly Hills: Helen Dill, Member of U.C.L.A. Faculty; Chm. Nat'l, Comm. Films for MENC; Wilhelmina Rutherford, Pres. El. Music Teachers of L.A. City Schools; Marguerite Bitter, Faculty U.S.C., and presented faculty concert as pianist.

Portland: Jean Williams won first in MU PHI EPSILON choral Contest.

San Francisco: Joyzelle Ray, Concert work and acclaimed by critics.

Seattle: Persis Horton, Pres. Washington State Federation of Music Clubs.

Washington: Susannah Armstrong Coleman, MΦE Original Composition Contest Winner of the Cup; Bonita Crowe, Honorable Mention in MU PHI EPSILON Original Composition Contest.

Wichita: Margaret Motter, Pres. Wichita Civic Music Ass'n; members of Wichita Symphony Orchestra, Marguerite Elliott, Lois Gordon, Carol Holman, Beatrice Pease.

Eugene: Phyllis Gray Knox, Piano Concert in Jordan Hall, Boston, Mass., and soloist with Boston "Pops" Orchestra.





NU CHAPTER'S ALLTONS

HERE at the University of Oregon we have a faculty husband and wife, Donald and Mary Kapp Allton, who represent a fine example of partnership in life and in music. Mr. Allton is the Assistant Professor of Organ and Theory and the faculty advisor for Phi Mu Alpha Sinfonia. Mary is the mother of three lively children, is a fine violinist and the faculty and alumna advisor for Nu Chapter. Each of the Alltons was presented in a recital by the School of Music last year.

Donald Allton was nine when he began to take lessons on the piano. Five years later he was playing the pipe organ and at fifteen was the church organist in his home town of Portland, Maine. His University work was done at Eastman School of Music. There he received his

B.M. degree in organ pedagogy and M.A. degree in theory.

Mary Kapp Allton has studied violin and piano since she was six years old. She received her Bachelor's degree in piano, violin and composition at the Arthur Jordan Conservatory of Music. While there Mary was initiated into Kappa Chapter and was the recipient of three Mu Phi Epsilon scholarships. Cupid intervened at this time and she went to Eastman School of Music where she met Donald. While there she received a teaching fellowship, earned a Master's degree in composition, and studied violin with Gustav Tinlot. She is a member of Pi Beta Phi social sorority.

Mary and Donald were married in December of 1938. Their professional work began at the University

Family Relations in MU PHI EPSILON

of Kentucky. In 1942 Mary Baldwin College of Virginia called Mr. Allton to the position of Acting Head of the Music Department.

The Alltons have now lived three years in Eugene, Oregon. Both have contributed much to the musical life of the campus and community: Mr. Allton as teacher, choral conductor, accompanist and organist and Mary Allton as soloist, and member of the University of Oregon String Quartet. Their genuine friendliness, their youth and good-natured manner makes them "one of us," yet takes nothing away

from the tremendous respect and admiration we have for them.—JERINE NEWHAUSE.

BETH AND FRED SHAFE

BETH KALMBACH SHAFE was initiated into Phi Kappa Chapter on February 12, 1939. In June of the same year she received her Bachelor of Science degree from the College of Education at Wayne University, Detroit.

Armed with her college degree, eight years of study on the 'cello, and five years on the harp, Beth went to Cass Technical High School, Detroit, in September of 1939, to teach the harp and 'cello. She was no stranger to the school, having been graduated from Cass in June, 1935, at which time she was recipient of the Booth Scholarship,

... presenting Professional Husbands and Wives

which entitled her to study with a recognized music teacher for two years. She chose Georges Miquelle, solo 'cellist of the Detroit Symphony Orchestra, as her teacher.

After 1944 Beth no longer taught in the Detroit schools. As harpist she organized a Mu Phi trio which now performs extensively in Detroit. She is a member of the Tuesday Musicale and has appeared as 'cello soloist for that group and for the Birmingham Musicale.

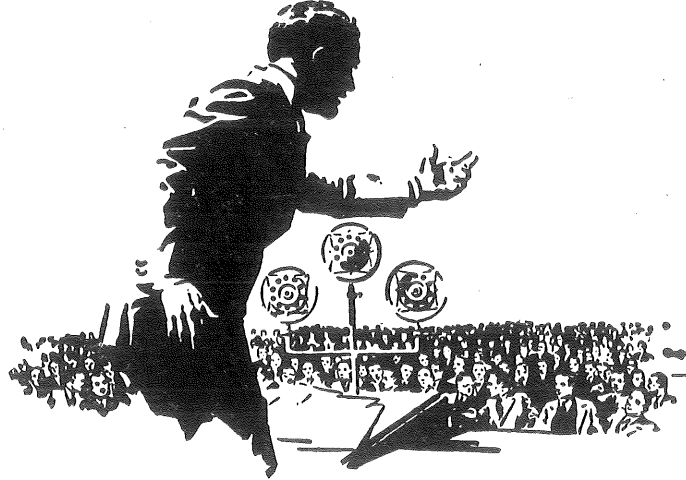
Beth has now added a Master of Arts degree to her accomplishments, and has been instrumental in help-

ing to organize a 95-piece symphony orchestra in Detroit, composed of school teachers and their families. Private instruction on harp and 'cello fills out her very busy days.

Fred Shafe, like his Mu Phi wife, has two college degrees to his credit, a Bachelor of Science in Education, and a Master of Arts in Music. Since his graduation from college in 1938 he has been engaged in teaching instrumental music in Detroit's public schools. He has spent the past five years as director of bands and orchestras at Cooley High School, nationally recognized for its musical achievements. His concert band holds a first division rating in high school band festivals.

Fred began his music studies when he was very young, playing successively the piano, the violin, and the cornet. He early joined the ranks of Detroit's professional musicians, doing orchestra and bank work. He has appeared with the trumpet trio of the Detroit Federation of Musicians' summer band on scenic Belle Isle. He is now assistant first trumpet player with the Faculty Symphony Orchestra, president of this fine organization, and also holds the presidency of the Detroit School Band and Orchestra Association.





INFORMATION *If You Please*

PLAN TO ATTEND NOW NATIONAL CONVENTION

June 23-24-25-26
Cleveland, Ohio

RIGHT OFF THE RECORD

Important Recordings Recently Released:

By *Beatrice Mullian Moore*

B MINOR MASS—Bach

Robert Shaw conducting the RCA Victor Chorale and orchestra. Soloists: Anne McKnight, June Gardner, Lydia Summers, Lucius Nietz and Paul Matthen. DMC 118 RCA Victor

VALSE NOBLES ET SENTIMENTALES—Ravel

DAPHNIS ET CHLOE SUITE No. 1

SARABANDE—Debussy-Ravel

San Francisco Symphony Orchestra, Pierre Monteux, Conductor
RCA Victor

HÄNSEL AND GRETEL—Humperdink

Metropolitan Opera Association production. Soloists: Rise Stevens, Nadine Conner, Thelma Votipka,

John Brownlee, and others. Max Rudolph, Conductor.

Columbia's first recording from the stage of the Metropolitan Opera House with Metropolitan artists, chorus, and orchestra.

SELECTIVE DIALING

for your Listening Pleasure
Serious Music Programs on the Air
(Consult your local newspaper for time and station in your area.)

Sunday— E.S.T.

NBC String Quartet

8:30 A.M. NBC

Organ Recital—9:15 A.M. CBS

Tone Tapestries9:30 A.M. MBS

Salt Lake Tabernacle

Choir11:30 A.M. CBS

N. Y. Philharmonic

Symphony3:00 P.M. CBS

Symphonette4:30 P.M. NBC

Sunday Evening

Hour8:00 P.M. ABC

Are you helping to support
GAD'S HILL SETTLEMENT
SCHOOL?

Order a magazine TODAY!

Sunday continued

Invitation to Music 11:30 p.m. CBS

Monday

Voice of Firestone 8:30 p.m. NBC

Telephone Hour 9:00 p.m. NBC

Tuesday

Boston Symphony 9:30 p.m. ABC

Wednesday

Eileen Farrell 11:30 p.m. CBS

Thursday

Piano Quartet 11:30 p.m. NBC

Saturday

Metropolitan Opera 2:00 p.m. ABC

NBC Symphony 6:30 p.m. NBC

Chicago Theatre 10:00 p.m. MBS

DO YOU KNOW

... that the *Hooper Survey* reveals only a two to three per cent listening audience for symphony programs on the air, while the most popular variety programs receive a twenty-five to thirty per cent? You can help to keep fine programs on the air and encourage more of them by (1) LISTENING; (2) COMMENDING the sponsor or broadcaster by card or letter. For your convenience the names and addresses of the major networks follow:

AMERICAN BROADCASTING CO., INC.
RCA Bldg., 30 Rockefeller Plaza
New York 20, N. Y.

COLUMBIA BROADCASTING SYSTEM, INC.
485 Madison Ave., New York, N. Y.

MUTUAL BROADCASTING SYSTEM
1440 Broadway
New York 18, N. Y.

NATIONAL BROADCASTING COMPANY
30 Rockefeller Plaza
New York 20, N. Y.

Life subscriptions to THE TRIANGLE may be had by sending fifteen dollars (\$15.00) to NATIONAL EXECUTIVE OFFICE, 6604 Maplewood Ave., Sylvania, Ohio.

Make checks payable to Mu Phi Epsilon

Report TRIANGLE address changes promptly to *NEO*.

NEW ANNUAL SUBSCRIBERS TO THE TRIANGLE, WELCOME

(None of whom are now affiliated with a chapter or club but who wish to keep in touch with their sisters through our magazine:

Kathleen Molyneux Bernhard, Alpha; Nellie Merrell Chesebrough, Epsilon; Margaret Beagle Grieser, Alpha; Naomi Newby MacCoy, Zeta; Ada Goodman Green, Epsilon; Jessie Kistler Ebert, Gamma; Lucille Johnson Means, Beta; Addie Helms James, Beta; Elsie Zeller Evers, Gamma; Leah Benbow Burchfield, Beta; Helen Wright Dormand, Epsilon; Marie Marion Gavin, Beta; Bertha Redwine Jett, Alpha; Ruth Juleff Mills, Gamma; Lorene Lehn-dorff Hoffman, Gamma; Weltha Ann Graham, Beta; Alice Halt

Have you invited your patronesses to subscribe to THE TRIANGLE?

Lietz, Mu Epsilon; L. Pearl Seiler, Beta; Grace Secor Leinaweaver, Epsilon; Kathryn Wright Seger, Gamma; Thelma Hamilton Hutton, Gamma; Pricilla Sterling Mix, Beta; Rheamona Green Less, Zeta; Irma Hand Watts, Zeta; Freda Bauman Adams, Epsilon; Mildred Howard Schnacke, Beta; Jeanette Leach Pietsch, Mu Epsilon; Helen Weaver Tower, Sigma; Virginia S. Beck Helm, Mu Iota; Edith Gilbert Warren, Mu Eta; Carol Perrenot Longone, Alpha; Lorene Lehn-dorff Hoffman, Gamma; Thelma Hamilton Hutton, Gamma.

MU PHIS WITH NEW FOREIGN ADDRESSES:

Margaret Taylor Patton—Phi Eta, Public Safety, A.P.O. 742, c/o Postmaster, New York, N. Y.

Evelyn Doreen Henderson Shy—Mu Upsilon, c/o Capt. George M. Shy-0542460, Office of the Surgeon, 10th Constab. Regt., A.P.O. No. 154, c/o Postmaster, New York, N. Y.

Merle Thomas Rice—Mu Gamma, Christian Mission, Takhatpur, Bilaspur District, C.P., India.

Carolyn M. A. Reed Travis—Mu Nu, c/o Capt. John A. Travis, 187th Med. Disp. Avn., A.P.O. 207, c/o Postmaster, New York, N. Y.

Mary Kay Crumbaker Williamson—Nu, c/o Capt. William G. Williamson-0402560, Hq. U. S. Forces in Austria, Quartermaster Section, A.P.O. 777, c/o Postmaster, New York, N. Y.

INITIATES FROM ABROAD

Esther Samonte—Mu Pi, 2-20-1947, Philippine Islands.

Millie Blackman—Phi Xi, 3-20-1946, Honolulu.

Lillian Murray—Phi Upsilon, 12-13-1946, Jamaica, British West Indies.

Aura Teran Moncada—Beta, 1-6-1947, Bogotá, Colombia.

WEDDING BELLS

Phi Delta—Nadeen Burkeholder to Kelley E. Williams, February 22, 1947, at Trenton, Mo. Address: Box 302, Dixon, Mo.

Theta—Jean Browning to Francis King Carey Madeira, June 17, 1947, at St. Louis, Mo.

Mu Upsilon—Helen Woolston to Richard Vernon Anderson, June 14, 1947, at St. Louis, Mo. Address:

1505 Del Norte Ave., Richmond Heights, Mo.

Mu Beta—Irene Hamchick to Lt. Joseph P. Williams, August, 1946, at Bad Nauheim, Germany, while serving for American Red Cross. Address: 33 Via Canan, Millbrae, Calif.

Theta—Lavina Gauen to John W. Mueller, August 11, 1947, in Chicago. Address: 4012 Flora Blvd., St. Louis, Mo.

* * *

MUSICIANS' CLUB OF AMERICA Sponsored by the Florida State Music Teachers' Association

April 7, 1947

Dear Mrs. Christian:

This line is to thank you for the article concerning the Musicians' Club of America in the recent edition of THE TRIANGLE. Since that was written we have been working night and day to bring plans to completion that we may begin building this summer. I very much hope we may be able to include a room donated by Mu Phi Epsilon as a memorial to Dr. Sterling. I need not tell you what a rare soul he was. A memorial of this sort would be a blessing to thousands and is the sort of thing which would most fittingly commemorate his name and his gentle goodness to everyone and particularly his founding this fraternity which has grown to be so strong and significant.

I am enclosing my check for \$2.00 with the request that you have sent me copies of THE TRIANGLE.

With my thanks again and best wishes for the continuation of your excellent work, I am

Sincerely yours,

BERTHA FOSTER

18 Belle Isle
Miami Beach, Fla.

TRIANGLE TIDBITS

about

Mu Phis Here and There

Mary Kay Crumbaker (Mrs. W. G.) Williamson, Nu, writes interestingly from Vienna, soon after joining her husband who is with the Armed Forces:

"When the beastly weather permits I take four one-hour lessons a week (privately) from Madame and Professor Duhan of the Akademie. . . . The beautiful opera house and the lavish costumes and settings of yesteryear were destroyed by bombs, but in spite of this opera maintains itself at the pinnacle of the arts. . . . Neglected to say that all of the many inconveniences are worth any cost because my husband and I after five years of marriage are together for the first time under conditions which allow us to work together and to have a "home"; these two rooms hold more happiness for us than any grand villa could anywhere else on earth."

* * *

Carolyn Reed Travis (Mrs. J. A.) Mu Nu and Spokane Alumnae Club writes a bit from Germany:

"We spent the Holidays enjoying skiing, the spectacular ice review, hockey, visiting quaint shops at Gormish and touring Oberammergau, the village of the Passion Play Theatre. Recently we went to Berchtesgaden. I hope we will be settled here until we return to the good old U.S.A. Things have been so un-

settled, I could not write until now.

"Living just five miles north of Munich, the past month has made it possible to hear the Munich Philharmonic Orchestra and a chorus of 250 perform Hadyn's Creation, a piano concert by Horst Minkofski of Dresden, and another piano program by young Julius Katchens of New York. The latter included Hitler's retreat where we saw the remains of his home, S.S. guard barracks et cetera, and could bring at close hand through binoculars, Egel's Nest, constructed at a cost of 25 million marks and taking 3,000 men one year.

"A shopping spree took us to Salzburg, Austria, and I want to go back to visit the spots connected with Mozart's life. We've visited wood working factories, glasseri fabrik, and watched various craftsmen work."

* * *

Our Bernice at NEO is as proud as can be these days. She has a new granddaughter, Anne Henry, born, of all times, at 1:32 A.M. on August 20, 1947. We'll wager if Grandma Bernice has anything to say about it, she'll be a Mu Phi someday.

* * *

Detroit Host to National Federation of Music Clubs' Biennial Convention, April 20-27, 1947.

Mu Phis in and around Detroit had a week of feasting when the first national convention of music clubs since Pearl Harbor convened at the Book-Cadillac Hotel. Our Mu Phi booth, with Marjorie Deyo as chairman of Information, served as a guide to all visiting Mu Phis. Other departmental chairmen from our chapter were, Kathryn Montgomery, Audrey Jennings and Doris Houghton. The Mu Phi Epsilon banquet held in the English Room, Hotel Staller, found such luminaries in our midst as: *Ava Comin Case*, National President; *Mildred Martin Christian*, National Editor; *Bernice Oechsler*, National Executive Secretary-Treasurer; Federation National Chairmen: *Etelka Evans*, *Dr. Haxel Nohovac Morgan*, *Ruth Bradley* and *Marie Keith*. These and many others responded to toasts called upon by *Ava Comin Case*.

Ruth Bradley acted as accompanist to an evening of opera at Music Hall following the banquet.

Marie Morrissey Keith, a Chicago Mu Phi, was elected National President of the Federation of Music Clubs, an honor of which we are all justly proud.—HAZEL SMITH, *Historian*, *Detroit Alumnae Chapter*.

* * *

Dellah Vail Borders, formerly of Kansas City and now in Chicago, writes: "I just returned from a gorgeous trip to Hawaii where I spent three glorious weeks with my daughter, her husband and two babies (one of whom is brand new). . . . I fell in love with the magic of the island as well as my two grandsons."

* * *

With deep regret the Eugene Alumnae bid farewell to *Aurora Potter Underwood* who is leaving

the University of Oregon music faculty after twenty-eight years. She has accepted a position teaching piano at the newly established University of Portland music school in Portland, Oregon.

* * *

Mildred King Wearn of Jackson Heights, New York, and *Aleene Grossart Brugmann* were among the Mu Phis noted at the annual Alumnae Day celebration at the New England Conservatory, Boston, Mass.

* * *

Lola Sanders Faust, soprano, and her husband, *James*, tenor, have just returned to their home in Washington, D. C., after several singing engagements in Texas. *Lola* is a member of Phi Gamma Chapter.

* * *

Phi Gamma Chapter honors go to *Florence Dorsey Scheidt* who is a woman Commentator, specialty staff writer, musician and radio actress at the FM-AM radio Station WITH. Recently she was featured as the pre-eminent woman in Baltimore's radio life in an article written for *Attic to Cellar*, current radio magazine. She is also soloist at St. John's church in Ellicott City and active in the Hopkins University Playhouse.

* * *

Denver, Colorado, boasts a Music Council, a most commendable organization. Twenty-two music organizations are members. Denver Alumnae Chapter has accepted the chairmanship of the committee which is arranging the bi-monthly musical programs on behalf of the Council at the Fort Logan Veterans Hospital. Talented new members added to the chapter's roster

include: *Mary Sue Warriner*, Phi Gamma, *Ruth Kilby*, Mu Zeta, and *Ardis Larson*, Mu Alpha.

* * *

Beth Miller of the Lincoln Alumnae Chapter "Planed" to Fontainebleau, France, on July 14, to study at the American Art School, Piano with Robert Casadessus, Composition with Nadio Boulanger. She played in the closing formal recital, August 26, AND played for Marcel Dupre on August 28. She visited in Switzerland and London before returning home.

* * *

Ruth Haberly, *Halcyn Hooker*, *Betty Wright*, *Dorothy Vanderslice*, *Alice Brown*, *Maybelle Allen* and *Velma Snook*, represent Lincoln chapter in the Lincoln Schools, and *Mildred Shannon* is music supervisor in the Friend, Nebraska, High School. *Altinus Tullis* conducted several 4-H Clinics through Nebraska for the Extension Department of the University of Nebraska.

* * *

Nora Babbitt Harsh, Gamma, Chicago, Illinois—teacher of singing, writing a book about six hundred celebrities she has interviewed.

Bernice White Scott, Xi, Mankato, Kansas—has a class of 90 piano pupils.

Edith Gilbert Warren (Mrs. Ray M.) Orange, California—organist, twenty years; a class of 40 piano pupils.

Helen M. Weaver Tower, Sigma, Kenosha, Wisconsin—renewed associations with Mu Phis at NFMC in Detroit.

Anna L. Garthy Benge, Benkelman, Nebraska—pianist for many civic groups; teaches music in schools

and privately; gives talks on her hobby, a collection of 250 dolls. *Jeanette M. Pietsch* (Mrs. L. E.) Sandpoint, Idaho—accompanist for Treble Clef Chorus.

* * *

In June, St. Louis Alumnae feted *Belle Brickey*, their treasurer, reinstalled for the fifteenth consecutive time. A second stanza of THE TRIANGLE dedicated and sung to her, a silver tray of gifts including a memory book in which everyone wrote their sentiments, completed the surprise evening for Belle.

* * *

Gladys Rich's CANTICLE OF THE GULLS was performed during the summer by the choir of the Mormon Church in Salt Lake City.

* * *

Los Angeles Alumnae bid Godspeed to *Linda Sool Denby* who went abroad this Fall.

* * *

Martha Immel, Phi Omicron, and *Lydia Boothby*, San Francisco Alumnae harpists, will be continuing their study in New York this winter.

* * *

Mr. and Mrs. Stanley Hiller, patron and patroness of Mu Phi Epsilon, recently opened their lovely home to the San Francisco Alumnae and friends for a DR. STERLING MEMORIAL Musical and Tea.

* * *

Frances Robinson conducted the Summer Symphony at San Jose State College.

* * *

Late notice: *Etelka Evans* is convalescing after a very serious operation in September. Mu Phis send loving thoughts and best wishes for a speedy and complete recovery.

LOSSES

In Our Sisterhood

CHARLOTTE KLEIN

CHARLOTTE KLEIN, beloved immediate past National Second Vice President, suddenly followed her dear mother in death after eight months on July 4, 1947. In poor health the past year, Charlotte courageously carried on with her teaching at Fredericksburg, Virginia, daily driving back and forth to her home in Washington in order to care for a very ill mother and an aged aunt. In March she gave a beautiful organ recital in Washington and in June opened her home for the Organists' Guild. She will long be remembered for her unselfish devotion and duty to Mu Phi Epsilon. Carol B. Wagner of the Washington Alumnae Chapter best expresses comfort to a grieved sisterhood in a poem dedicated to her loving memory:

Out of God's celestial console
Undying notes of love and faith
Reach below to comfort those she knew.

Choirs immortal join the anthem,
Hers the heavenly organ's score,
And those *Harmonies* eternal
Reach an everlasting shore.
Love and *Friendship* were the handmates
Of the art she understood;
True to her ideals, she labored
Through her noble life for good.
Eternal worker for the Art most true.

Keep the watch above us, Sister,
Lead us on to better things;
E'er remind us of the beauty
In our hearts that *Music* brings.

—CAROL B. WAGNER

ETHELWYNNE KINGSBURY

Mu Epsilon Chapter

The summer has brought great grief and loneliness to Mu Phis of Minneapolis and St. Paul in the death of Ethelwynne Kingsbury, beloved member of Mu Epsilon Chapter and member-in-spirit of all the other active and alumnae chapters of these two cities as well. Borne to a life of rugged good health, Ethelwynne suffered an ac-

cident in her eighth year which limited her to life in a wheel chair. *Limited* is not the word, though, for she acknowledged neither limitations nor handicaps. Rather, she made of them stepping stones on which she advanced steadily in her education both academic and musical, until she became one of our Northwest's finest musicians. Her beautiful voice, dynamic personality and vision, combined with her splendid musicianship, placed her in the front ranks of our voice teachers.

Ethelwynne's watchwords were "COURAGE" and "SERVICE," directed to all who touched her life, but principally to the physically handicapped.

We are indebted to Dr. Annie S. Greenwood, Minneapolis writer and lecturer, for a beautiful character sketch of Ethelwynne reprinted from *The Etude* in our December, 1944 TRIANGLE.—BERTHA M. KING.

Our heartfelt sympathy is extended to our sisters in Minneapolis and St. Paul, to Ethelwynne's family and friends wherever they may be.

* * *

NELLE THIELE MANNING, beloved wife of Mr. J. R. Manning of Kingston, Texas, passed away on June 6, 1947, after a serious illness of seven months. Until the fall of 1946 Nelle took an active part in music circles throughout Kingston and the state. She served as director of a church choir and choral group; as president of the Kingston Music Club; State Treasurer of the Federated Music Clubs of Texas; and for many years taught piano and voice. She was a character member of *Mu Theta Chapter* of Mu Phi Epsilon. Our sincere sympathy is extended to her husband

and to her many friends who held her in such high esteem.

* * *

FAYE CROWELL, mezzo-soprano, died very suddenly March 24, 1947, following a brief illness. Faye entered Chicago Musical College in 1925, where she was a pupil of Isaac Van Grove. In March, 1926, she was initiated into *Iota Alpha* Chapter and held the Mu Phi Epsilon Scholarship. She received her Mus.B. degree from Chicago Musical College in 1927.

After teaching at Missouri State Teachers College and at the University of Kansas, Faye returned to Chicago Musical College where she has been a member of the voice faculty since 1930. In June, 1942, the college granted her a M.Mus. Ed. degree. She was always active in church and choir work and taught in the Chicago Public Schools. Our deepest sympathy is extended to her family, friends, and to *Iota Alpha* Chapter for the loss of their beloved sister.

* * *

MARTHA JANE SEXTON of Tonkawa, Oklahoma, passed away on June 28, 1947. Although in ill health for several years, she remained courageous and cheerful and was able to complete the work for the degree of Bachelor of Music Education at the College of Emporia, Emporia, Kansas, in January, 1947.

Martha Jane took an active part in all the musical activities of the college. She directed the Friends Church Choir in Emporia, served as Sunday School teacher and as sponsor of Christian Endeavor groups. She was a member of the college Y.W.C.A. and a member and officer of Rainbow girls.

Initiated into Phi Epsilon Chapter

in April, 1943, Mary Jane served her chapter as treasurer and chaplain. Possessed of a beautiful contralto voice, she held promise of a fine musical career. Our deepest sympathy is extended to the family and members of Phi Epsilon Chapter, who feel keenly the loss of their beloved sister.

* * *

As THE TRIANGLE goes to press we are saddened by the news of more losses in our Sisterhood. Our sincere sympathy is extended to their families and loved ones everywhere.

Seattle Alumnae lovingly honor

the memory of *Edith Packer Blaine* who passed away in the Spring after a prolonged illness.

A sudden heart attack took the life of beloved *Celia Smith Phipps* in early June. Her loss will be keenly felt by her sisters in the San Francisco and Denver Alumnae Chapters, whom she served as recording secretary and president, respectively.

* * *

Phi Lambda Chapter, Salem, Oregon, tells of an impressive memorial service held for two loved alumnae sisters: *Mary Schultz Duncan* and *Mrs. Walter Denton*.



PHOTOGRAPH TAKEN FOLLOWING INITIATION CEREMONY OF BETA CHAPTER, NEW ENGLAND CONSERVATORY OF MUSIC, BOSTON, MASSACHUSETTS, MAY 12, 1947.* (Front row, seated, left to right) *Karen Morrill, Cynthia Swift, Drema Taylor, Lee Morgan, Jane Rubin, and Faith Coakley* (the new initiates); (second row, left to right) *Betty Lee, Holmgren Dolores, Baldyga, Elizavetha Sokoloff, Helen Orpen, Mary Spyllos and Jean Robinson*; (third row, left to right), *Virginia MacGown, Emma Jane West, Cleo Williams, President Joan Hall, Helen Smith, Lilla Shaughnessy, and Takouhi Chorbajian*.

*Carr Organ Room.

MU PHI EPSILON DIRECTORY

FOUNDERS

WINTHROP S. STERLING, Mus.D.....(Deceased)

ELIZABETH MATHIAS FUQUA

HONORARY ADVISORY BOARD

- ELIZABETH MATHIAS FUQUA (Mrs. John W.), 2006 7th Ave., Greeley, Calif.Alpha
 MYRTAL PALMER LEACH (Mrs. F.).....Gamma
 ELFRIDA LANGLAIS KENT (Deceased).....Delta
 ALICE DAVIS BRADFORD PECK (Mrs. Arthur), 40 Wilmuth Ave., Wyoming, OhioAlpha
 ORA BETHUNE JOHNSON (Mrs. J. F.), (Deceased).....Theta
 MARY TOWSLEY PFAU (Mrs. Wm.), (Deceased).....Alpha
 ROXILETTE TAYLOR YEATES (Mrs. John), Cody, Wyo.....Theta
 ANGELLA M. FOX (Mrs.), (Deceased).....Iota Alpha
 HARRIET THOMPSON WRIGHT (Mrs. Wm. E.), 482 Glenn Ave., Fresno, Calif.Chi
 DORIS BENSON (Mrs. Walter), Spikeswood Farm, Woodruff, Wis.....Iota Alpha
 PERSIS HEATON TRIMBLE (Mrs. Charles M.), (Deceased).....Mu Alpha
 LUCILLE EILERS BRETTSCHEIDER (Mrs. August, Jr.), 3426 Morrison Place, Clifton, Cincinnati, Ohio.....Alpha
 ORAH ASHLEY LAMKE (Mrs. George), 138 Linden Ave., Clayton, Mo.....Delta
 DOROTHY ELIZABETH PATON, 1307 Iroquois Place, Ann Arbor, Mich.....Gamma
 BERTHA MARRON KING (Mrs. Daniel P.), 208 Oliver Ave. So., Minneapolis 5, Minn.....Mu Epsilon
 ELIZABETH AYRES KIDD (Mrs. A. E., Jr.), New Trier High School, Winnetka, Ill.....Mu Xi, Sigma

NATIONAL COUNCIL 1946-47

- President—AVA COMIN CASE (Mrs. Lee O.).....Gamma, Ann Arbor Alumnae School of Music, University of Michigan, Ann Arbor, Michigan
 First Vice President—MARGARETTE WIBLE WALKER.....Mu Nu, Los Angeles Alumnae 5163 So. Normandie, Los Angeles 37, California
 Second Vice President—RUTH ROW CLUTCHER (Mrs. John).....Omicron, Philadelphia Alumnae 21 Kent Road, Upper Darby, Pennsylvania
 Third Vice President—HILDUR LAVINE SHAW (Mrs. W. S.).....Phi Iota 1319 Ninth Street, South, Fargo, North Dakota
 National Editor—MILDRED MARTIN CHRISTIAN (Mrs. Henry C.).....Mu Phi, Cleveland Alumnae, 1568 Lauderdale Avenue, Lakewood 7, Ohio

NATIONAL EXECUTIVE OFFICE

Executive Secretary-Treasurer

- BERNICE SWISHER OECHSLER (Mrs. Ralph J.).....Epsilon, Toledo Alumnae 6604 Maplewood Avenue, Sylvania, Ohio

* * MU PHI EPSILON * NATIONAL DEPARTMENTS * *

FINANCE

- Great Lakes*—Dorothy E. Paton, *Chairman, Gamma, Ann Arbor Alumnae*; 1307 Iroquois Place, Ann Arbor, Michigan.
East Central—Adah M. Hill, *Kappa*; 3444 No. Pennsylvania, Indianapolis 5, Ind.
West Central—Una Callahan (Mrs. J. E.), *Mu Theta Gamma, Austin Club*; 702 Lamar Blvd., Austin, Texas.
Pacific—Lillian Pettibone, *Mu Beta, Portland Alumnae*; 319 S. W. Oak, Portland, Ore.
Atlanta—Louisa W. Allensworth (Mrs. E. B.), *Mu Omega, Atlanta Alumnae*; 781 Crestridge Dr. N. W., Atlanta, Ga.

EDITORIAL BOARD

MILDRED MARTIN CHRISTIAN, *National Editor*

Atlantic:

- Beta*—Martha Jean Robinson, R.F.D. No. 3, Harriman, Tenn.
New York City—Margaret Sherman, 165 W. 83rd St., New York, N. Y.

Great Lakes:

- Phi Omicron*—Ruthlyn Milota, 18400 Hiller Ave., Cleveland 19, Ohio.
Detroit—Doris P. Houghton (Mrs. M. G.), 18298 Indiana Ave., Detroit, Mich.

East Central:

- Mu Omicron*—Doris Wulff, 2527 Moonman Ave., Cincinnati 6, Ohio.
St. Louis—Adelaide B. Adams (Mrs. Hampton), 2 Windemere Place, St. Louis 12, Mo.

West Central:

- Mu Gamma*—Ara Jane Hill, 4035 Holdredge St., Lincoln, Nebr.
Kansas City—Margaret S. Hamilton (Mrs. W.), 4016 Wabash, Kansas City, Mo.

Pacific:

- Nu*—Wilma Jeanne Wilson, Ann Judson House, 1332 Kincaid, Eugene, Ore.
Los Angeles—Ethel W. Gabriel (Mrs. Chas. H.), 1142 S. Longwood Ave., Los Angeles 6, Calif.
 Pacific Coast Press Representative: Sue Jones Campbell (Mrs. B. J.), 2653 Halm Avenue, Los Angeles 34, Calif.

NATIONAL LIBRARIAN

ELIZABETH MATHIAS FUQUA, 2006 7th Ave., Greeley, Colo.

ALUMNAE BOARD

HILDUR LAVINE SHAW, *Alumnae Advisor*.

Atlantic:

- Rochester Club*—Helen K. McHose (Mrs. A. Irvine), 37 Summit Dr., Rochester 10, N. Y.
Washington—Quinta J. Frey (Mrs. J. W.), 4236 47th St. N. W., Washington 16, D. C.

Great Lakes:

- Chicago*—Marie L. Keller (Mrs. Warren H.), 10020 S. Hoyne Ave., Chicago 48, Ill.
Lansing-East Lansing Club—Harriet Hillier, 331 Southlawn, East Lansing, Mich.

East Central:

- Minneapolis*—Lucille T. O'Connell (Mrs. G. E.), 5733 Wentworth, Minneapolis, 9, Minn.
St. Louis—Cleo Milligan (Mrs. R. H.), 7575 Stanford, St. Louis, Mo.

West Central:

- Denver*—Violette M. McCarthy (Mrs. Lorne V.), 1035 So. Fillmore Way, Denver 9, Colo.
Tulsa Club—Belle Vickery Matthews (Mrs. Tom B.), 1412 S. Utica, Tulsa 4, Okla.

Pacific:

- San Francisco*—Marcelle W. Vernazza (Mrs. J. A.), 334 11th Ave., San Francisco 18, Calif.
Seattle—Eleanor H. Wilson (Mrs. P. R.), 2800 39th St. W., Seattle, Wash.

MAGAZINE SUBSCRIPTION AGENCY BOARD

- GRAYCE KENT CLARK (Mrs. Roy L.), *Chairman, Omega, Des Moines Alumnae*; 1616 46th St., Des Moines, Ia.
Atlantic—Elizabeth Prokop, *Mu Upsilon*; 149 Versailles Rd., Rochester 5, N. Y.
Great Lakes—Eunice Groth (Mrs. W. W.), *Mu Lambda, Milwaukee Club*; 4824 W. Townsend St., Milwaukee 10, Wis.
East Central—Maryland M. Blackburn (Mrs. D. V.), *Gamma, Evansville Club*, 751 E. Powell Avenue, Evansville 13, Ind.
West Central—Marguerite Campbell Elliott (Mrs. R. N.), *Phi Pi, Wichita*; 429 So. Volusia, Wichita, Kansas.
Pacific—Martha Day, *Mu Nu, Los Angeles Alumnae*; 1735 Canyon Dr., Los Angeles, Calif.

MANUAL

- MABEL HENDERSON, *Chairman, Theta, St. Louis Alumnae*; 761 Belt Ave., St. Louis 12, Mo.

RITUAL

- BERTHA M. KING (Mrs. Daniel P.), *Chairman, Mu Epsilon, Minneapolis Alumnae*; 208 Oliver Ave. So., Minneapolis 5, Minn.

MUSIC IN HOSPITALS

- VIOLA M. ANDERSON (Mrs. H. O.), *Chairman, Phi Iota*; 1038 1st St. No., Fargo, N. Dak.

SCHOLARSHIPS

- HELEN CHUTE DILL, *Chairman, Phi Nu*; 304 N. La Peer, Beverly Hills, Calif.

MU PHI EPSILON SCHOOL OF MUSIC AT GAD'S HILL CENTER

1919 West Cullerton, Chicago, Ill.

- Director and Representative on Settlement Board of Gad's Hill*: FRANCES HUFF BUTLER (Mrs. O. G.), *Mu Xi*; 5405 Dorchester, Chicago 15, Ill.
Treasurer—ALMA E. GRAMBAUER, *Mu Xi*; 1350 Henry St., Des Plaines, Ill.

Active and Alumnae Chapters

ATLANTIC PROVINCE

Province Governor—RUTH ROW CLUTCHER (Mrs. JOHN), *National Second Vice President*; 21 Kent Road, Upper Darby, Pennsylvania

- Beta*—New England Conservatory of Music.....Boston, Mass.
President—JOAN M. HALL, 129 Hemenway Street, Boston 15, Mass.
Mu—Brenau College.....Gainesville, Ga.
President—CLAIR PRICE, Alpha Chi House, Gainesville, Ga.
Psi—Bucknell University.....Lewisburg, Pa.
President—ODETTE HUTCHISON, Women's College, Lewisburg, Pa.
Mu Upsilon—Eastman School of Music, University of Rochester.....Rochester, N. Y.
President—JESSIE ROBERTA ALLARDICE, 424 University Ave., Rochester, N. Y.
Phi Gamma—Peabody Conservatory of Music.....Baltimore, Md.
President—BERNICE K. SPRATLER, 4715 Dunkirk Ave., Baltimore 29, Md.
Phi Upsilon—Boston University.....Boston, Mass.
President—RACHEL WING, 24 Mt. Vernon St., Boston, Mass.
Phi Psi—Mary Washington College of the University of Virginia....Fredericksburg, Va.
President—JANE MILTON SUMPTER, 1851 College Station, Fredericksburg, Va.
Phi Omega—Westminster College.....New Wilmington, Pa.
President—MARY CRAWFORD, Ferguson Hall, New Wilmington, Pa.
Epsilon Beta—Queens College.....Charlotte, N. Car.
President—GLORIA SNELLING, Queens College, Charlotte 4, No. Car.
Atlanta Alumnae Chapter—
President—LOUISA W. ALLENSWORTH (Mrs. E. B.), 781 Crestridge Dr. N.E., Atlanta, Ga.
Boston Alumnae Chapter
President—VIRGINIA PRIOR MORRELL (Mrs. W. Stuart), 62 Dwight St., Brookline, Mass.

New York City Alumnae Chapter

President—MARGARET SHERMAN, 165 West 83d St., New York 24, N. Y.

Philadelphia Alumnae Chapter

President—PAULINE BRINKMAN WOLF (Mrs. Edgar), 216 So. 46th St., Philadelphia, Pa.

Pittsburgh Alumnae Chapter

President—LAURA WILCOX FRANKLIN (Mrs. S. P.), West Waldheim Road, Fox Chapel, Pittsburgh 15, Pa.

Washington Alumnae Chapter

President—GERTRUDE D. PARSONS (Mrs. HAROLD A.), 732 Whittier Street, Takoma Park 12, D. C.

Meadville Alumnae Club

President—HARRIETT L. MOESSNER REYMORE (Mrs. E. E.), 170 Reynolds Ave., Meadville, Pa.

Rochester Alumnae Club

President—HELEN McHOSE (Mrs. Irvine), 37 Summit Drive, Rochester, N. Y.

GREAT LAKES PROVINCE

Province Governor—Ava Comin Case (Mrs. Lee O.), National President; School of Music, University of Michigan, Ann Arbor, Michigan

Gamma—University of Michigan.....Ann Arbor, Mich.

President—LOIS IRENE FORBURGER, Martha Cook Dorm., Ann Arbor, Mich.

Epsilon—Toledo Conservatory of Music.....Toledo, Ohio

President—MARANA BAKER, 622 West Woodruff, Toledo 2, Ohio

Iota Alpha—Chicago Musical College.....Chicago, Ill.

President—ETHEL A. WITT, 64 E. Van Buren Ave., Chicago, Ill.

Sigma—Northwestern University.....Evanston, Ill.

President—CATHRYN DETWEILER, 647 University Place, Evanston, Ill.

Mu Xi—American Conservatory of Music.....Chicago, Ill.

President—FRANCES PHELPS, 1018 Forest Ave., River Forest, Ill.

Mu Pi—Ohio Wesleyan University.....Delaware, Ohio

President—NANCY Jo CURLIS, Monnett Hall, Delaware, Ohio

Mu Phi—Baldwin-Wallace College.....Berea, Ohio

President—NORMA LEE BOYLE, Merner-Pfeiffer Hall, Berea, Ohio

Phi Kappa—Wayne University.....Detroit, Mich.

President—HELEN JANE THOMPSON, 8535 Burnette, Detroit 4, Mich.

Phi Omicron—Western Reserve University.....Cleveland, Ohio

President—JANET M. FISHER, 10810 Lake Shore Boulevard, Bratenahl, Ohio

Phi Sigma—DePaul University.....Chicago, Ill.

President—ROSE THERESE SCHNEIDER, 5565 Cleveland St., Gary, Ind.

Ann Arbor Alumnae Chapter

President—FRANCES M. THROOP (Mrs. PALMER S.), 619 East University Ave., Ann Arbor, Mich.

Chicago Alumnae Chapter

President—MARIE LUTMAN KELLER (Mrs. W. H.), 10020 So. Hoyne Ave., Chicago 43, Ill.

Cleveland Alumnae Chapter

President—THELMA MERNER GOLDSWORD (Mrs. NORMAN), 3400 Hollister Road, Cleveland Heights 18, Ohio

Detroit Alumnae Chapter

President—MARION S. JEWELL (Mrs. LLOYD V.), 18547 Magnolia Drive, Detroit 19, Mich.

Toledo Alumnae Chapter

President—DARRELL HEWES PETERSON (Mrs. ARTHUR), 2628 Powhatan Parkway, Toledo 6, Ohio

Lansing-East Lansing Alumnae Club

President—MARGARET KELLER HALIK (Mrs. GLEN W.), 535 Hillcrest Ave., East Lansing, Mich.

Milwaukee Alumnae Club

President—RUTH LEE, 4233 North Ardmore Ave., Milwaukee 11, Wis.

EAST CENTRAL PROVINCE

Province Governor—Mildred Martin Christian (Mrs. Henry C.), National Editor; 1568 Lauderdale Ave., Lakewood 7, Ohio

Zeta—DePauw University.....Greencastle, Ind.

President—MARY LANE HUBBELL, Pi Beta Phi House, Greencastle, Ind.

Theta—Kroeger School of Music.....St. Louis, Mo.

President—ELEANOR DEBNFY, 4973 Mardel Ave., St. Louis 9, Mo.

Kappa—Arthur Jordan School of Music.....Indianapolis, Ind.

President—JOANNE VIELLIEU, 558 Middle Drive, Woodruff Place, Indianapolis, Ind.

Upsilon—Cincinnati Conservatory of Music.....Cincinnati, Ohio

President—LILLIAN BLUESTEIN, Highland Ave. and Oak St., Cincinnati 19, Ohio

Omega—Drake University.....Des Moines, Ia.

President—DORRIE SHEARER, 2916 Cottage Grove Ave., Des Moines, Iowa

Mu Alpha—Simpson College.....Indianola, Ia.

President—JEANNE WARNER, 705 North C, Indianola, Iowa

Mu Epsilon—MacPhail School of Music.....Minneapolis, Minn.

President—THELMA LARSON JACOBSON (Mrs. C. G.), 2616 Hennepin, Minneapolis 8, Minn.

Mu Omicron—College of Music.....Cincinnati, Ohio

President—GERTRUDE JACOBS, 3410 Bishop St., Cincinnati 20, Ohio

Mu Psi—Coe College.....Cedar Rapids, Ia.

President—OLIVE CARANO, Voorhees Hall, Cedar Rapids, Ia.

Phi Theta—Lindenwood College.....St. Charles, Mo.

President—LUCETTE STUMBERG, Irwin Hall, St. Charles, Mo.

Phi Rho—Minneapolis College of Music.....Minneapolis, Minn.

President—MAE DETERT, 1408 Spruce Place, Minneapolis, Minn.

Epsilon Alpha—The College of St. Catherine.....St. Paul, Minn.

President—PATRICIA MARIE KOEMPEL, 2122 Roblyn Ave., St. Paul 4, Minn.

Epsilon Gamma—Belhaven College.....Jackson, Miss.

President—CYNTHIA ELAINE KNIGHT, Belhaven College, Jackson, Miss.

Cincinnati Alumnae Chapter

President—ALMA MASSMAN GEISER (Mrs. CHARLES), 5719 Hamilton Ave., Cincinnati 24, Ohio

Des Moines Alumnae Chapter

President—PEARL SORENSON GROTH (Mrs. ALTON O.), 3909 Waveland Drive, Des Moines, Iowa

Indianapolis Alumnae Chapter

President—RUBY WINDERS, 332 No. Ritter Ave., Indianapolis, Ind.

Minneapolis Alumnae Chapter

President—CHARLOTTE PETERSON SKINNER (Mrs. J. E.), 4419 Aldrich Ave., Minneapolis 9, Minn.

St. Louis Alumnae Chapter

President—MILDRED ADAMS HUSSONG (Mrs. D. EARL), 3339 No. Central Ave., Clayton 5, Mo.

St Paul Alumnae Chapter

President—HARRIET G. ALLEN, 1855 Ashland Ave., St. Paul 5, Minn.

Cedar Rapids Alumnae Club

President—ELEANOR HOUTS, 1808 Washington Ave. S.E., Cedar Rapids, Iowa

Evansville Alumnae Club

President—MAURINE K. TAYLOR (Mrs. JAMES), 821 East Chandler Ave., Evansville, Ind.

WEST CENTRAL PROVINCE

Province Governor—Hildur Lavine Shaw (Mrs. W. S.), National Third Vice President; 1319 Ninth St. So., Fargo, No. Dakota

Xi—University of Kansas.....Lawrence, Kansas

President—HARRIET HARLOW, 1001 West Hills, Lawrence, Kansas

Mu Gamma—University of Nebraska.....Lincoln, Nebr.

President—KATHLEEN DONOVAN, 846 Garfield, Lincoln, Nebr.

Mu Delta—Kansas City Conservatory of Music.....Kansas City, Mo.

President—MARLYS ANN WATTERS, 231 East 46th St., Kansas City, Mo.

Mu Theta Epsilon—University of Texas.....Austin, Texas

President—ELPENIKI KOUTSIGOS, 2915 Rio Grande, Austin, Texas

Mu Kappa—University of Oklahoma.....Norman, Okla.

President—ROBERTA HEARD, 1012 Monnett, Norman, Okla.

Mu Mu—Kansas State College.....Manhattan, Kans.

President—NORENE FRANCIS, Van Zile Hall, Manhattan, Kansas

Mu Tau—University of South Dakota.....Vermilion, So. Dak.

President—DOROTHY JUNE SMITH, Alpha Phi House, Vermilion, So. Dak.

Mu Chi—Southern Methodist University.....Dallas, Texas

President—DOROTHY JEAN HARDING, Box 243, S.M.U., Dallas, Texas

Phi Epsilon—College of Emporia.....Emporia, Kans.

President—MARY HELEN BECK, DUNLAP HALL, College of Emporia, Emporia, Kansas

Phi Zeta—Morningside College.....Sioux City, Ia.

President—LOIS ELAINE McCALLUM, 3312 Vine Ave., Sioux City 20, Iowa

Phi Iota—Concordia College.....Moorhead, Minn.

President—RUTH HERDIS BERGE, 624 5th St. North, Fargo, North Dakota

Phi Xi—Baylor University.....Waco, Texas

President—ANNIE B. COMBS, Burselson Hall, Waco, Texas

Phi Pi—University of Wichita.....Wichita, Kans.

President—PEGGY G. LENTZ, 1702 Fairmount, Wichita, Kansas

Phi Tau—North Texas State Teachers College.....Denton, Texas

President—NANNETTE REESE, Mu Phi Epsilon Box, Music Hall, North Texas State Teachers College, Denton, Texas

- Phi Phi*—University of Kansas City.....Kansas City, Mo.
President—DOROTHY CORTELYOU, 5516 Rockhill Road, Kansas City, Mo.
- Denver Alumnae Chapter*
President—VIOLETTE MCCARTHY (MRS. LORNE V.), 1035 So. Fillmore Way, Denver, Colo.
- Kansas City Alumnae Chapter*
President—LOIS WUERTZ (MRS. O. K.), 829 Westover Road, Kansas City, Mo.
- Lincoln Alumnae Chapter*
President—FRANCES HALLETT (MRS. SHELDON), 3434 South 28th, Lincoln, Nebr.
- Wichita Alumnae Chapter*
President—LOIS AYRES GORDON (MRS. RUSSELL), 602 So. Green, Wichita 9, Kans.
- Austin Alumnae Club*
President—UNA CALLAHAN (MRS. J. E.), 702 Lamar Blvd., Austin, Texas
- Dallas Alumnae Club*
President—FLOYLEE HUNTER HUNTER (MRS. EUGENE J.), 4382 McArthur Drive, Dallas, Texas
- Houston Alumnae Club*
President—HELEN PORTER LAPAT (MRS. WM.), 2301 Maroneal Blvd., Houston, Texas
- Oklahoma City Alumnae Club*
President—MINNALETHA JONES WHITE, 3018 Paseo, Oklahoma City 3, Okla.
- Tulsa Alumnae Club*
President—HELEN COLBURN RINGO (MRS. BOYD R.), 2446 East 18th St., Tulsa, Okla.

PACIFIC PROVINCE

- Province Governor*—Margarette Wilbe Walker, National First Vice President; 5163 So. Normandie, Los Angeles 37, Calif.
- Nu*—University of Oregon.....Eugene, Ore.
President—WILMA JEANNE WILSON, Ann Judson House, 1332 Kincaid, Eugene, Ore.
- Tau*—University of Washington.....Seattle, Wash.
President—WINIFRED JUNE BEARD, 1906 East 45th, Seattle 5, Wash.
- Mu Beta*—Washington State College.....Pullman, Wash.
President—JUNE ROBERTA KRETZ, P.O. Box Duncan Dunn, Pullman, Wash.
- Mu Zeta*—Whitman College.....Walla Walla, Wash.
President—EUNICE MARGARET MAIER, 1007 Howard St., Walla Walla, Wash.
- Mu Eta*—College of the Pacific.....Stockton, Calif.
President—VALERIE F. CLINKSCALES, West Hall C.O.P., Stockton, Calif.
- Mu Nu*—University of Southern California.....Los Angeles, Calif.
President—GRACE MINASIAN, 1217 So. Walnut Grove Ave., Rosemead, Calif.
- Phi Lambda*—Willamette University.....Salem, Ore.
President—KATHERINE SCHISSLER, 1647 Waller St., Salem, Ore.
- Phi Mu*—San Jose State College.....San Jose, Calif.
President—JANE SARAH POPE, 281 South 9th St., San Jose, Calif.
- Phi Nu*—University of California at Los Angeles.....Los Angeles, Calif.
President—ELIZABETH FIELD BURR, 10816-34 Lindbrook Drive, Los Angeles 24, Calif.
- Phi Chi*—Fresno State College.....Fresno, Calif.
President—ELEANOR R. HEISKELL, 318 Peralta Way, Fresno, Calif.
- Epsilon Delta*—Lewis and Clark College.....Portland, Oregon
President—PATRICIA OSBORNE GILHAM (MRS. ROBERT B.), 57 Richardson Court, Portland 1, Ore.
- Beverly Hills Alumnae Chapter*
President—CAROLYN COE, 235½ South Elm Drive, Beverly Hills, Calif.
- Los Angeles Alumnae Chapter*
President—ETHEL W. GABRIEL (MRS. CHAS. H.), 1142 Longwood Ave., Los Angeles 6, Calif.
- Portland Alumnae Chapter*
President—MARJORY KATHLEEN HEERMANS, 2157 N.W. Lovejoy, Portland 10, Ore.
- San Francisco Alumnae Chapter*
President—SYMETA ZIMMERMAN KUPER (MRS. NATHAN), 1441 Bonita, Berkeley 9, Calif.
- Seattle Alumnae Chapter*
President—RUTH HENLEY FROST (MRS. R. F.), Box 301, Route 2, Tacoma, Wash.
- Eugene Alumnae Club*
President—EDNA LESLIE PEARSON (MRS. T. A.), 1479 High St., Eugene, Ore.
- San Diego Alumnae Club*
President—RUTH SCOTT CHRISTENSEN (MRS. A. C.), 3129 Curtis St., San Diego 6, Calif.
- Spokane Alumnae Club*
President—HELEN WOODWARD QUAIPE (MRS. LAURENCE), South 2712 Post St., Spokane, Wash.
- Tacoma Alumnae Club*
President—MARY TEEL JOHNSON (MRS. D. H.), 1603 No. Adams, Tacoma.



CALENDAR

1947-48

September—*President* calls meeting of chapter officers to make plans for the year.

Corresponding Secretary reports any changes in names and addresses of chapter officers to NEO (National Executive Office, 6604 Maplewood Ave., Sylvania, Ohio) and orders supplies for the year (from NEO) enclosing check and remittance blank secured from *Treasurer*.

September 10—*Historian*: All material for inclusion in November TRIANGLE must be in the Office of the National Editor, Mildred M. Christian, 1568 Lauderdale, Lakewood 7, Ohio.

October 15—*Treasurer* and *Corresponding Secretary* prepare and send to NEO, fall membership lists (on official forms) and check with remittance blank to cover fall per capita taxes (\$.75 per member), and Convention taxes (\$1.25 per member—for Alumnae chapters only), and TRIANGLE subscriptions for annual subscribers (\$1.00 per year).

November 13—Founders' Day. Forty-Fourth Anniversary.

Treasurer sends with remittance blank to NEO, check with remittance blank for Founders' Day Fund voluntary contribution of 44 pennies per member.

November 15—*Historian*: Deadline for material for January TRIANGLE. Omit newsletter.

December 1—*President* writes fall report letter to National Third Vice President, Hildur L. Shaw, 1319 9th St. So., Fargo, No. Dak.

January 10—*Historian's* required newsletter due at Office of National Editor; Deadline for all material for March TRIANGLE.

February 1—Manuscripts for Original Composition Contest due at Office of *National Second Vice President*, Ruth Row Clutcher, 21 Kent Road, Upper Darby, Pa.

February 1—Contestants, Musicological Research Contest: send notice of your intention to enter contest to *National Third Vice President*, Hildur L. Shaw (for address, see above, Dec. 1).

March 10—*Historian*: Deadline for material for May TRIANGLE. Convention delegate glossy and biographical sketch due. Omit newsletter.

March 15—*Treasurer* and *Corresponding Secretary* prepare and send to NEO, spring membership lists (on official forms) and check with remittance blank to cover spring per capita taxes (\$.75 per member), and Convention taxes (\$1.25 per member—for Alumnae Chapters only).

April 1—Manuscripts for Musicological Research Contest due at Office of National Third Vice President, Hildur L. Shaw (for address, see above, Dec. 1).

President writes spring report-letter to National Third Vice President.

June 1—*President*, *Treasurer*, and *Corresponding Secretary* send annual reports to NEO (on official forms).



he
Mu Phi Epsilon
Creed

I believe in Music, the noblest of all the arts, a source of much that is good, just, and beautiful; in Friendship, marked by love, kindness, and sincerity; and in Harmony, the essence of a true and happy life. I believe in the sacred bond of Sisterhood, loyal, generous, and self-sacrificing, and its strength shall ever guide me in the path that leads upward toward the stars.

—RUTH JANE KIRBY, Omega