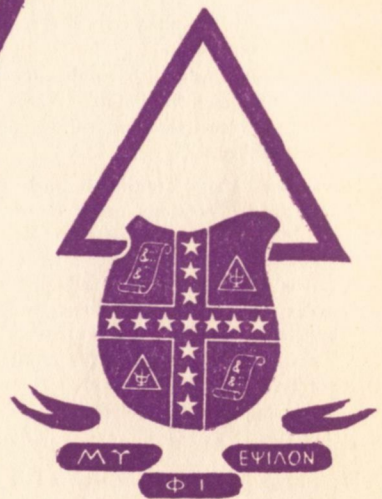


vol. 43 #2

# The Triangle



**OF MU PHI EPSILON**

*January, 1949*



## CALENDAR

1948-49

- First Week of School:** *President* calls meeting of chapter officers to inspect chapter equipment, discuss fall materials received from NEO (National Executive Office, 6604 Maplewood Avenue, Sylvania, Ohio), and make plans for the year.  
*Corresponding Secretary* reports any changes in name and address of chapter officers to NEO and orders supplies for the year (from NEO), enclosing check and remittance blank secured from *Treasurer*.
- September 10—*Historian*:** All material for inclusion in November TRIANGLE must be in Office of National Editor, Orah Ashley Lamke (Mrs. G. W.), 1327 McCutcheon Rd., Apt. F, Richmond Heights 17, Mo.
- November 13—Founders' Day.** Forty-fifth Anniversary.  
*Treasurer* sends with remittance blank to NEO, check for Founders' Day Fund voluntary contribution of 45 pennies per member.
- November 15—*Treasurer* and *Corresponding Secretary*** prepare and send to NEO, fall membership lists (on official forms) and check with remittance blank to cover fall per capita taxes (\$1.50 per member) and Convention taxes (\$1.25 per member), and TRIANGLE subscriptions for annual subscribers (\$1.00 per year).  
*Historian*: Deadline for material for January TRIANGLE. *Omit newsletter*.
- December 15—*President*** writes fall report letter to your Province Governor concerning chapter activities and problems.
- January 10—*Historian's*** required newsletter due at Office of National Editor; Deadline for all material for March TRIANGLE.
- February 1—Contestants,** Musicological Research Contest: send notice of your intention to enter contest to *National Third Vice President*, Hildur L. Shaw, 1319 Ninth St. So., Fargo, No. Dak.
- March 10—*Historian*:** Deadline for material for May TRIANGLE. *Omit newsletter*.
- Last Week of First Semester:** *President* appoints Nominating Committee for new Chapter officers.
- April 1—Manuscripts** for Musicological Research Contest due at Office of National Third Vice President (address given above, Feb. 1).
- First Month of Second Semester—*President*** calls meeting of chapter for the election of new officers, who will be installed in office during the second month of the second semester.  
*Corresponding Secretary* reports the names and addresses of new chapter officers (on official forms) to NEO.
- April 15—*Treasurer* and *Corresponding Secretary*** prepare and send to NEO, spring membership lists (on official forms) and check, with remittance blank to cover spring per capita taxes (\$1.50 per member), and Convention taxes (\$1.25 per member).
- President* writes spring report-letter to your Province Governor.
- June 1—*President*, *Treasurer*, and *Corresponding Secretary*** send annual reports to NEO (on official forms).



# ★ *The Triangle* ★

Of Mu Phi Epsilon

VOLUME 43

NUMBER 2



*In This January, 1949, Issue*

To Phi Mu Alpha.....	2
National Scholarship Winner.....	3
Fraternity Public Relations.....	4
Installation of New Chapters.....	6
A New Music Project in St. Louis.....	9
A Mu Phi Musician in Present Day Athens.....	10
Observations on Music and Musicians in Postwar Athens.....	11
Jiyu Gakuen .....	12
Mu Phis First Program for First Initiates.....	13
The Pride of Mu Phi.....	14
Our Past National Presidents.....	18
Chapter Notes.....	20
One Big Family.....	22
Mu Phis Here and There.....	23
In the News.....	28
Mu Phi Epsilon Directory.....	31

*Orah Ashley Lamke, Editor*

THE TRIANGLE of Mu Phi Epsilon is published four times yearly, the first of November, January, March and May, at 2642 University Ave., Saint Paul, Minnesota, by Leland Publishers, Incorporated (The Fraternity Press) for Mu Phi Epsilon, National Music Sorority. The subscription price is \$1.00 per year. Deadlines for copy: Materials for publication must reach the Editor, 1327 McCutcheon Road, Apartment F, Richmond Heights 17, Mo., before the tenth of September, January, March and the fifteenth of November. Entered as second class matter at the postoffice at Saint Paul, Minnesota, under the act of March 5, 1879.

To  
Phi  
Mu  
Alpha

Greetings from Mu Phi Epsilon  
to

THE OFFICERS AND DEARLY ESTEEMED MEMBERS OF PHI MU ALPHA, SINFONIA, ON THE OCCASION OF THEIR GOLDEN ANNIVERSARY NATIONAL CONVENTION.

ON behalf of your sister Sorority, Mu Phi Epsilon, I extend warmest greetings to Sinfonia, our brother fraternity on this happy occasion. May the bonds of friendship which have given us inspiration and joy in the achievement of our mutual aims and ideals be strengthened by all that this Convention means in the history and development of your beloved organization. Mu Phi Epsilon owes deepest gratitude to three pioneer Sinfonians: to Calvin Vos, Simon Jordan, and to Dr. W. S. Sterling, revered founder of our sorority, who aided Elizabeth Mathias Fuqua, co-founder in working out legal technicalities while organizing it and in obtaining the Mu Phi Epsilon National Charter from the state of Ohio. Since wise Sinfonian guidance and help in our early days was the pattern upon which our own growth evolved, Mu Phi Epsilon salutes Sinfonia as the very warp and woof of its own foundation and continuance. May we continue this expanding, beneficent development in the even deeper, closer professional and friendship motif as brother and sister fraternity. And may Sinfonia reach higher aims and ideals through its years of activity based on a rich, productive past.

Fraternally yours,

MARGARETTE WIBLE WALKER, *National President*

MU PHI EPSILON

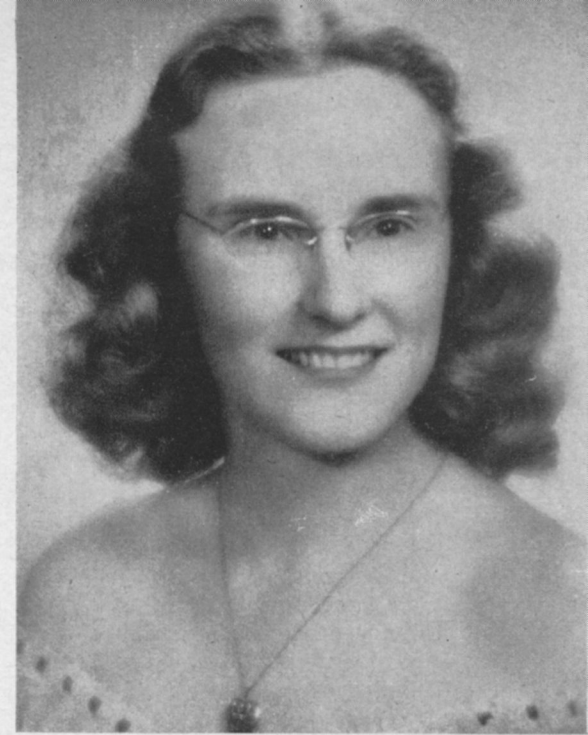
From the Sinfonian 50th Anniversary Issue.

National  
Scholarship  
Winner

WILMA JEANNE WILSON was born in Coos Bay on the Oregon coast. Music has always been an important part of her life. She first attended a musical kindergarten and studied piano through grade, high school, and college. One of her early teachers was Mildred Rood Stevenson a Sigma Mu Phi.

In Junior High School she was Student Body President and accompanied the chorus. She was assistant guardian for Bluebirds and young Camp Fire Girl groups and counseled at various camps during the summers. Her high school days saw increased musical activities in duo-piano and glee club work. She was a member of the scholastic and activity Honorary Society and had the lead in the Junior class play, graduating in 1944 with first place awards in scholarship, music, and girl's citizenship and receiving the all-county citizenship D.A.R. award. The following fall she entered the University of Oregon, studying piano with George P. Hopkins and organ with Donald W. Ollton (both Mu Phi husbands).

She was initiated into Mu Phi Epsilon in 1945 and was very active in sorority affairs, serving as president for two years (1946-48), as business delegate to the National Convention in New York City in 1946 and on the National Editorial Board 1946-48.



Nu chapter received the Chapter Service award for 1946-47.

Throughout her college years she appeared often as accompanist and recital soloist, and was a member of the Choral Union and Vesper Choir. She also was a member of the Y.W.C.A. and Christian Fellowship and an active member of Ann Judson House, a Christian living organization on the Oregon campus.

Wilma Jeanne received her B.A. in piano in June 1948 with "superior academic achievement." She accompanied Nu chapter's music delegate at the Cleveland Convention at which time she received the National Scholarship award.

This fall Wilma Jeanne is doing graduate work at the University of Michigan with piano as a major and theory as a minor. She is studying piano with Ava Comin Case, our Past National President and is enjoying her affiliation with Gamma chapter.



# Fraternity Public Relations

BY AVA COMIN CASE, *Past National*

*President*

IN this day and age we find our lives very definitely interlaced with our brothers both at home and abroad. Spans of distance and time mean very little, and inter-dependence and inter-responsibility have become a part of our every day living.

The fraternity of today, whether it desires it or not, finds itself strongly entwined not only with other fraternities in its specific field, but with general fraternity life and with the activities of non-Greek letter organizations in its general professional field. Although this may be more generally true in the field of music, it is true to a certain extent with all professional fraternities. It is in this sense that the professional fraternity has a duty to its members in addition to the commonly accepted responsibilities of leadership-training which all general fraternities accept as a part of the obligation to their members.

The non-Greek professional organizations serve as an excellent guide post to the college fraternity in planning the activities and projects for its members. To state more clearly what I mean by this I should like to use the field of music as an example, since obviously I have more information on that particular subject than any other. I feel that anything I might say here would, no doubt, be applicable to any of the other professions represented in the Professional Panhellenic Association.

The four music sororities in the PPA hold organizational member-

ships in the Music Teachers National Association, the Music Educators National Conference, the National Association of Schools of Music, the National Federation of Music Clubs, and the National Music Council. Each one of these large national organizations is closely allied with the activities of our four college music fraternities through the aims and ideals expressed in their Constitutions.

Through the programs of the MTNA and the MENC, we are informed of the trends of the work of the private and college music teacher. Our collegiate membership is potential material for these larger national bodies and our alumnae membership is already out in the field. It is a wise fraternity which watches the trends of music education as evidenced by the national programs of activities of these groups and plans the specified work for its collegiate groups to minimize the transition between the undergraduate and the graduate days.

The association between the NASM and our music fraternities is a very important one, for it is through this organization that we carry on our extension work. It is an easy matter to pursue extension activities in schools which are members of the NASM, but our greatest help comes in evaluating the work done in schools which are not yet members. It is through an acquaintance with the requirements of the NASM that we are able to judge the

musical and theoretical attainments of a school which, for some reason or another, does not hold membership in this Association. Curiously enough, it has often been possible, through our extension activities, to interest a school in requesting and receiving membership in the NASM as a prerequisite to the chartering of a chapter of one or another of our music fraternities on that particular campus!

The association of the music fraternities with the very large and effective National Federation of Music Clubs is largely through our alumnae membership. Most of our alumnae chapters are group members of the NFMC and many of the national workers are fraternity members as well. Since the over-all aim of the music fraternity and the NFMC is the same, i.e., help for the young, potential musician, support of all national music movements of importance, and the furtherance of American music, it is evident that the closest coöperation between these two organizations—the music fraternity and the NFMC—is of great mutual benefit. The Young Artists Contests are a case in point, for while no music fraternity has enough wealth among its own chapters to sponsor such large contests, its support of these contests through small annual donations helps the NFMC materially in carrying out a program of real help for the struggling young professional musician in the way of financial aid, appearances with large orchestras and in large music centers, and smaller concert engagements so necessary to the growth of young musicians. Through the similarity of activities of the music fraternity and the NFMC, the young college student is taught to lend sup-

port in many ways to important music movements, to give of his time and talent to the underprivileged, to help to foster peace and good-will throughout the world through music, and to further the cause of the American musician and of American music.

The participation of the music fraternity in the program of the National Music Council is a peculiar one—one more of association of thinking rather than of actual participation in a specific program of activity. The Council is composed of some fifty national organizations in the professional and commercial music field. The representatives at the semi-annual meetings are some of the best-known and best-informed music educators, music merchants, composers, and artists in America today. The problems of the musician are thoroughly discussed, and often definite solutions are found. In coöperation in the consummation of these solutions, the music fraternity finds its rightful place, and often makes its plans for fraternity activity through the needs expressed at these meetings. The theoretical discussions often lead to the practical working out of the solutions through the active and alumnae chapter projects. Indeed, it often seems that the music fraternities are the only organizations in the NMC which are actively engaged in working out the problems which are brought to light through the discussions of the Council meetings!

In this rather sketchy review of the situation in the music world I have tried to point out to you how our fraternity members are trained to support movements of importance in their specific fields; how they are

(CONTINUED ON PAGE 25)

# INSTALLATION OF

## EPSILON CHAPTER

*Texas Christian University  
Fort Worth, Texas*

MAY 21, 1948, was an outstanding day on the campus of Texas Christian University, for two National Musical Fraternity Chapters were installed—Delta Mu of Phi Mu Alpha Fraternity and Epsilon Epsilon of Mu Phi Epsilon Sorority.

Epsilon Epsilon installation was the fulfillment of the desire of twenty-two girls to be members of Mu Phi Epsilon. Starting as a local honorary music club, we were sponsored by Mrs. T. S. McCorkle, wife of our Dean of Fine Arts Department and assisted by Helen Travis in making our petition for Mu Phi. Ava Comin Case, National President, was the installing officer. The pledge cere-

mony took place on May 20 followed by a musicale-tea in honor of Mrs. Case at the home of Mrs. McCorkle.

A beautiful pre-installation joint musicale was given on the next afternoon after which each fraternity had its respective initiation, and installation ceremony. Each fraternity was assisted by members from Denton, Dallas, and Waco, Texas. Over one hundred people attended the formal banquet which followed and this was again a joint occasion. The banquet room was beautifully decorated and an unusual lighting effect used. Dean McCorkle was an outstanding toastmaster. Visiting members responded to his toasts and the installing officer for Phi Mu Alpha and our own Ava Comin Case were the speakers. It was a most inspiring and joyous two days.



*Seated, left to right: Helen Marie Brown, Lucille Nussbaum, Jean Hill, Gloria Callaway, Alice Benthall, Enel Shaw, Betty O'Keefe, Katherine Ann Frank, Miriam Nethery, Tressie Cloar, Betsy Frasier, and Jane Pittman. Standing, left to right: Dorothy Musgrove, Francalene Boone, Ora Mae Clark, Edith McLeod, Josephine Mussetter, Miss Jeannette Tilleit, Mrs. Ava Comin Case, Mrs. Lilita W. McCorkle, Norma Cheverton, Betty Sue Williamson, Louise Spiegelmire, Lillian Thompson, Eula Meers, and Audre Lou Abney.*

# NEW CHAPTERS

## EPSILON ZETA

*Hendrix College  
Conway, Arkansas*

BY MARY MARGARET HOLMES

THE Epsilon Zeta chapter of Mu Phi Epsilon was founded at Hendrix College, Conway, Arkansas, May 23, 1948. Our chapter represents to the present members several years of work and planning on the part of past members of our local sorority, Theta Alpha Epsilon. It also represents the efforts of present members who promoted and participated in a musical last spring preceding the initiation to secure the necessary money to finally fulfill our dream of being affiliated with a national sorority.

The day was indeed a happy one for us all and the presence of Ava Comin Case on our campus made us

feel doubly proud of our achievement as she guided us onward to a desire for greater progress in an active chapter on our campus. Through her enthusiasm, patience, and guidance, we were made to feel at once that we had been allowed to join a wonderful sorority of which we all could be proud.

Following a luncheon in Tabor Hall on the Hendrix campus, the installation service was held in Gallo-way, women's residence hall. Assisting Ava Comin Case were Mabel Henderson and Katherine Cowan, both of St. Louis, Missouri, and Margaret Kay, a former member of the Mu Phi Epsilon Chapter at the University of Michigan, now a member of Hendrix Music faculty.

A musicale by the members and

(CONTINUED ON PAGE 27)



*Left to right (front row) Mary Margaret Holmes, President, Elizabeth McDowell, Mildred K. Shields, Corresponding Secretary, Nancy Lane Purkins, Katharine Gaw, Faculty Sponsor, Suzanne Williams, Secretary, Barbara Lawrence, Margaret Kay, Faculty Sponsor; (back row) Martha Landers, Vice President, Eloise Arnold, Treasurer, Doris Nell Darby, Alumnae Secretary, Polly Wright, Jean McAnally, Historian and Chaplain, Lewis Crawford Wilson, Chorister and Warden.*





Left to right, seated: Joan Mahn, Jerrie Huffaker, Norma Davis, Madie Uehling Hohener. Standing: Margaret Keith, MaRee Williams, Verna Rae Morrill, Margarette Wible Walker, Mary Phillips, Marvyl Hoven, Maxine Banton.

## EPSILON ETA CHAPTER

*George Pepperdine College  
Los Angeles, California*

BY MIRIAM SCHARLACK

FOUNDERS' DAY of Mu Phi Epsilon, November 13, 1948, was celebrated in the Los Angeles area by the installation of Epsilon Eta chapter on the campus of George Pepperdine College. Officiating was Margarette Wible Walker, national president, and Pacific province governor, a former Los Angeles woman who is now Dean of Women at Texas Technological College, Lubbock, Texas. Assisting her were Barbara Dupuy, president of Mu Nu chapter at University of Southern California, Marjorie Jackson of Mu Nu, and Ellen Halopoft, president of Phi Nu chapter at University of California at Los Angeles. Also taking part were members of Los Angeles and Beverly Hills Alumnae.

Installation of the chapter at the

President's Home followed a morning meeting and luncheon at which Mrs. Walker discussed the basic ideals of the organization, stressing sincerity in friendship and in service, as well as in musicianship. Following the ceremonies of initiation and installation tea was served, with Eloise Smith and Aliene Reed, presidents of Beverly Hills and Los Angeles Alumnae, respectively, pouring. Guests included members of the five Mu Phi Epsilon chapters in Southern California, their patrons and friends. A musical program was presented by Verna Rae Morrill and Jerrie Huffaker, pianists, and Marvyl Hoven, vocalist.

The main feature of the tea was the induction of patrons and patronesses by Mrs. Walker.

Mr. Hugh M. Tiner, President of Pepperdine College, and Mrs. Tiner, Dr. and Mrs. Russel N. Squire and Mr. Neil Hill of the music department will serve in this capacity. Fac-

(CONTINUED ON PAGE 25)

# A New Music Project in St. Louis

BY MABEL HENDERSON

*Past National Vice President*

FOR the past three years, Saint Louis has been developing a very unique organization which has for its main object the encouraging of talented young musicians in the Greater St. Louis area. The organization is known as the Artist Presentation Committee, and began merely as one of the committees of the large overall St. Louis Music Sponsors which we hope will some day unify and coordinate all the music interests of the city. The chief interest was to provide opportunities for young artists to appear in public recital under a sponsorship that would insure for them the recognition that they deserve, and also hoped to give them a chance for some financial assistance. To this end the committee planned carefully and worked diligently. The result was that last year a most successful series of recitals was given, presenting six young artists, and at this writing, the second series is in progress, presenting again six young artists—three pianists, two singers and one violinist.

The Committee has now become independent, is thoroughly organized, and is legally incorporated. It hopes, by giving these opportunities for recitals, to stimulate young musicians to continue their study and artistic development. In a small way, these concerts are in St. Louis what a Town Hall recital is in New York. The Committee takes complete charge of all arrangements for the concerts, and through its Guarantee Fund underwrites the expenses for

the entire series. After deducting the expenses, the Committee presents the artists with the remainder of the ticket sale. In this way it hopes to assist the young musicians in their further preparation for their careers.

At the conclusion of each series, auditions are held to select artists for the next year's series of concerts. Those applying for auditions must present repertoire lists and programs to show them to be of artist grade, and experience. At the auditions the applicants are carefully graded by a group of well qualified judges, none of whom has any direct interest in the applicant. The artists chosen by the judges are then invited to appear in the next series of recitals.

The Artist Presentation Committee is a non-profit organization. In its membership will be found representatives of all circles of music activities in St. Louis. Its plan has been received with great enthusiasm by all interested in music education and training. Our Mu Phis are especially well represented in this endeavor. Irene Chambers is the General Chairman of the Committee. Another Mu Phi heads up the Application Division of the Committee, and there are eight Mu Phis on the Board of Directors. It is hoped that some day other cities will develop similar organizations and that there can be an interchange of artists, thus providing more opportunities for public appearances for these young artists who are starting out on their careers.

*A Mu Phi  
Musician  
in  
Present Day Athens*

BY NELLIE WALKER FREELAND

A YEAR and a half spent in Greece recently provided Juliet Dowdy Alexopoulos with an unusual and enriching musical experience, and sent her home with a problem in transcribing music from Byzantine into modern "Western" notation which should make a large contribution to our understanding of Greek music.

As a member of Xi chapter at the University of Kansas, Juliet Dowdy majored in piano with Carl A. Preyer, and studied organ with Charles S. Skilton. Later she received her Master of Music degree from the Eastman School of Music, and studied piano with many artist teachers in this country and in England, including Jose Echaniz, Carlos Buhler, and Alexander Raab. She has been a member of the music faculties at Western Maryland College, Kent State University, and Kansas Wesleyan University, teaching piano and theory, and has played in concerts and recitals in this country, as well as doing accompaniment and ensemble work during her stay in Greece.

While teaching at Kent University, in 1939, she married Dr. Constantine J. Alexopoulos, a member of the botany faculty. In 1944 Dr. Alexopoulos went to Athens, Greece, as Deputy Director of the Division of Agriculture of the United Nations Relief and Rehabilitation Administration, arriving there on the first relief ship to enter Greece with the British Army. In September 1945 Juliet joined him in Athens, and while there she worked as administrative assistant in the Administrative Services Division of UNNRA, in that section responsible for the physical welfare of the personnel.



JULIET DOWDY ALEXOPOULOS

Juliet had long been interested in Greek folk songs. Now, on trips to Crete, Delphi, and Euboia she had opportunity to hear the villagers sing and play the truly ancient songs, which are a part of the traditions desperately clung to, during four hundred years of Turkish occupation, by patriots who fled to inaccessible mountain villages, and refused to let foreign influences enter their lives.

In a style of the Byzantine church music, but antedating even this, the Greek folk songs are, in the opinion of Greek scholars, the most ancient type of music existing on the European continent today.

A desire to record some of these very old songs in their traditional form, led Juliet into a more detailed study of that field of Byzantine music, where the octave is divided, not into half steps, but into unevenly spaced tonal divisions, (as many as forty two within an octave), and where rhythms are extremely free. For this study she was fortunate to have as a teacher Spyros Peristeris, professor of Byzantine music at the Conservatory of Athens, whose father, Constantine Peristeris had published, in Byzantine notation, a book (now out of print) of over three hundred folk songs collected in different parts of rural Greece. Juliet treasures a

(CONTINUED ON PAGE 26)

*Observations on Music and Musicians  
in Postwar Athens*

BY JULIET DOWDY ALEXOPOULOS

MUSIC, always an important part in Athenian life, continued in Athens even during the war and during occupation, but sometimes under great difficulties. Lack of essential materials such as strings for the orchestral instruments did not lighten the difficulties, and all public musical programs were under the constant censorship of the German military authorities.

Now again the National Symphony Orchestra is functioning regularly, giving weekly concerts at the Olympia Theatre during the winter season, and summer outdoor concerts in the ancient theatre of Herodes Atticus at the foot of the Acropolis. The Symphony and Opera Company, at least partially state supported, charge a reasonable admission fee for their programs, and always perform to capacity audiences. A number of Athenian artists appear as soloists with the symphony as well as in solo concerts, recitals and radio programs, and visiting musicians from other countries are again performing in Athens. The conservatory and numerous private teachers continue to give musical instruction in the city, and church music is being carried on in the traditional manner by the better choirs in the city.

Because of my interest in Byzantine music, and in the historical aspects of Greek folk music, which

seem to be a direct descendant of the music of Ancient Greece, I was privileged to have some very interesting conferences with Prof. Spyros Peristeris, authority on Byzantine and Greek folk music, and with Prof. Constantine Psahos, now retired, who is the recognized "world authority" in this field. Another interesting experience was that of seeing and hearing the organ especially invented by Prof. Psahos for playing Byzantine music. This organ, by means of small keys placed between the black and white keys, is able to play the most used of the 42 distinct pitches within the octave, employed in the performance of Byzantine music—pitches smaller than the quarter tones.

Financially the standard of living for professional musicians is pitiable, and decidedly insufficient for their needs. Most of them are forced to hold other positions in addition to their music positions in order to live, in the face of terribly high living costs and extremely low wages. Such living conditions are taking their toll of musicians and scholars in Greece today, and forcing them, in cases where they are unable to perform additional work, to part with their most cherished possessions. An example is that of Prof. Psahos who is offering for sale as a unit, his unique and rare collection of Byzantine mu-

(CONTINUED ON PAGE 26)



# Jiyu Gakuen

At the Cleveland Convention I was asked to be Chairman of the Committee on International Music Relations and Rehabilitation. This is a new committee and a very important project, especially for an organization such as Mu Phi Epsilon, one of whose basic beliefs is in the universal language of music.

Our focusing point at this time is the Jiyu Gakuen School in Japan. This school was completely bombed out during the war, which means that all of their teaching material disappeared literally into thin air. It is now our aim and our responsibility to re-stock this library.

Mr. Clarence A. Davies, who is in charge of this and is located in Tokyo, has not been able as yet to give us a detailed account of what is needed. However, that information will be forthcoming shortly as he is making a special trip to the school for us.

In the meantime we can be getting our lists ready so that we will be sure that the music we send will fit their program. So I am asking each chapter President to appoint a committee to compile lists of everything available and send them to me as soon as possible. Then I shall be able to tell

*(Read—Mrs. Hani's Self-Made School, in December issue of The Reader's Digest—EDITOR.)*



BERNICE AUSTIN

you what material to send and also the method of procedure.

There are many Mu Phis who are not affiliated with an active or alumnae chapter who read the TRIANGLE. Would you, too, please go through your music and see what you could send?

Please send me lists only, now. The music itself will all have to be assembled and shipped through the New York office of the Civil Affairs Division of the United States Army, under whose direction we are working. You will receive the details on this later.

Those of us who have gone through bombing know all too well what a tremendous lift this project can mean and those who have not experienced it can certainly imagine. But don't stop there! Please compile your lists and get them to me as soon as possible. The address is

Bernice Austin,  
1083-A Shady Avenue,  
Pittsburgh 6, Penna.

## Social Evening and Concert

By the ALPHA CHAPTER of the

## MΦE

Sorority

in honor of the initiates

In the Concert Hall of the Metropolitan College of Music. December Twenty-first—Nineteen Hundred and Three

# Mu Phi's First Program for First Initiates

Program	Program
Remarks by the President S. Elizabeth Mathias	SOLO—"Who is Sylvia" ..Schubert Jessie Yuille
PIANO—Andante Symphony No. 1—Beethoven Edith White Elizabeth Mathias Elizabeth Steward Alma Sterling (Two pianos)	SOLOS—α Violets Wright b Spring Song Becker Lilian Sutton
VOCAL SOLOS—α Hindoo Song Bemberg b Spring Song Ries Edith White	QUARTETTE—"The Lord Is My Shepherd" Schubert Elizabeth Mathias Alma Sterling Ethel Kimball Edith White Jennie Bellis Elizabeth Steward Lilian Sutton Jessie Yuille
TRIOS—α "Lift Thine Eyes" Mendelssohn b Charity W. S. Sterling Lilian Sutton Elizabeth Mathias Jennie Bellis	Officers of the Sorority

# THE PRIDE OF MU PHI

## EILEEN STEENSEN

EPSILON is happy to have one of her "wandering sisters" back, after an exciting and thrilling five years. Eileen Steensen, pianist, just returned from a summer of study and travel in Europe. In 1943 she went to Great Barrington, Mass., to study with Robert Casadesus. The next year found her in Denver studying with Josef and Rosina Lhevinne and later the same year she entered the Graduate French Department of Columbia University, receiving her bachelor's degree in 1945. During 1945-46 she toured Army and Navy bases and hospitals both in the U.S. and overseas in the Concert Division of the U.S.O., flying to Cairo, Egypt,

EILEEN STEENSEN



in 1945. She returned to Columbia University, receiving her Master's degree in French in 1947 and during 1947-48, taught in the School of General Studies at Columbia. Early this summer she went to Europe, studying music at the American Division of the Paris Conservatory at Fontainebleau, France. Her piano study was with Robert and Gaby Casadesus and Music Analysis with Nadia Boulanger. She also played in the Master Class. Her travels took her to England, Italy, France, Switzerland and Germany.

Eileen is a real asset to the musical life of Toledo.—GUYNETH REDMAN

## DORIS FRERICHS

OCCASIONALLY, one finds an artist who likes to remain in the background and allows her music to speak for itself. You may recall the name of Doris Frerichs, listed on committees during the Convention in New York. Doris was there—working behind scenes in connection with "props" and seeing that things were in order before the Convention opened. Doris was initiated into the New York Chapter several years ago when it was Tau Alpha, and as Former Vice President of the present New York City Alumnae Chapter, worked faithfully and was only too glad to take on any assignment asked of her. She was a faithful member of the Board even though she had to drive miles to attend the meetings, from her home in New Jersey.

This brief statement is only used by way of introduction to show you the general character of an outstanding young American pianist in New York City of whom Olin Downes said after her first Town Hall Concert, "She played prevailingly with taste, poetical fancy, brilliantly and to the pleasure of the audience . . . and also as a wholly intelligent musician."

In her teens, Doris was awarded the Bamberger Scholarship for a course at the Institute of Musical Art of the Juilliard School of Music. At graduation, she won the highest honors offered by the school, and again in the postgraduate artist course, she received the Faculty scholarship and appearances with orchestra. She is the outstanding Artist pupil of Carl M. Roeder.

Doris has concertised throughout the East, and has broadcast over the principal American networks. In addition, she maintains studios in New Jersey, New York City, and Columbia University.



## DOROTHY MUNGER

KAPPA Chapter is proud to present Dorothy Munger, artist pianist, who will be concertizing a great deal in the present season. She has appeared as soloist with the Indianapolis Symphony Orchestra in many concerts and on national broadcasts. She has been acclaimed by critics in Indianapolis, Washington, D. C., St. Louis, and other cities.—MARY LOUISE MASTERS



DORIS FRERICHS

It is a pleasure to know and be associated with Doris Frerichs and we appreciate her as one of our outstanding Mu Phis.—GLADYS SHAFER

DOROTHY MUNGER







MARYJANE ALBRIGHT

MARYJANE ALBRIGHT, soprano from Cheyenne, Wyoming, is a Mu Phi of whom Gamma Chapter is especially proud. Beginning her voice studies at the age of 16, Maryjane attended the Universities of Nebraska and Denver on music and dramatic scholarships, and also won a scholarship to and was graduated with magna cum laude honors from Colorado Woman's College in Denver. There she was active in numerous campus and civic activities, including the Denver Opera Company, Delta Tau Kappa, and the Student Legislature. She was also recipient of the faculty award for being the most outstanding student.

Coming to the University of Michigan in the summer of 1946, Maryjane has continued her record of outstanding scholarship and participation in activities. After giving an

exceptionally fine graduating recital in June, she has begun work on her master's degree in voice which she expects to receive in June, 1949. She has sung leading roles in "The Bartered Bride," "Carmen," "The Marriage of Figaro," and "The Telephone," produced by the Michigan Repertory Players.

Besides serving as vice president of Gamma Chapter, Maryjane is a member of Madrigal Singers and Opera Workshop, and has numerous professional engagements, including solo work in the Brahms "Requiem." Further honors which she has won include membership in Senior Women's Society, Pi Kappa Lambda and Phi Kappa Phi. She was also named winner of a Babcock Scholarship of \$100, awarded to the outstanding senior in Music School.

Maryjane's beautiful voice and artistry, her charm, and her cooperation and achievement in office have made her an invaluable member of Gamma Chapter. We feel justly proud of her and wish her continued success in her singing career.—ELSIE STEFAN



BLUE PLATES

*Old blue plates, resting on a shelf,  
All mellowed through the years;  
Thy beauty speaks appealingly,  
Sweet memory endears.*

*On pondering thy true design,  
The peace upon that shelf,  
I see God's plan, His perfectness,  
That lifts me out of self.*

FAY BLAIR HOMAN  
Xi, Portland Alumnae

BETTY JEAN O'KEEFE

EPSILON EPSILON chapter of Texas Christian University is proud to have as one of its members such a fine vocalist as Betty O'Keefe from Pine Bluff, Arkansas.

Active as a vocalist and piano accompanist while in high school, Betty has proven to be even more active and outstanding during her college career. A lyric coloratura, she has been and is an outstanding soloist for both T.C.U. and various organizations in Ft. Worth. She had the leading role in "The Pirates of Penzance" given by the T.C.U. Choral Club last spring. In addition to this, Betty had the role of Frasquita in "Carmen" as presented by the Ft. Worth Civic Opera Company under the direction of Walter Herbert of the New Orleans Opera Company. She has been a member of the Ft. Worth Civic Opera Chorus for two seasons previous to her role in "Carmen." She showed her ability as a choir director last year when she directed the United Religious Council Choir of T.C.U.

Betty is a charter member, former vice president, and present treasurer of Epsilon Epsilon Chapter. She is also serving as secretary of the T.C.U. Choral Club and the Fine Arts Council.—EULA MARIE MEERS



BETTY JEAN O'KEEFE

RECENT PUBLICATIONS OF MU PHI COMPOSERS

Milwaukee Alumnae Club:

Edna Ruff—Its Fun to Sing—a song book—Hall and McCreary.

Winifred Ryan—Gaily the Troubador—a book of well known songs arranged for the Recorder—Schirmer.

St. Louis Alumnae Chapter:

Mary Ruth Jesse (Mrs. J. M. Aull)—Play Easies—a book of 39 very easy pieces, designed to ease the gap between first and second books—Shattinger, St. Louis.

Dorothy Gaynor Blake — Wild Horses, Grade 1, Sleigh-bell Time, Grade 2—Clayton F Summy.

(CONTINUED ON PAGE 26)

HONOR

Mu Nu—Lois Benedict, Phi Kappa Phi and Pi Kappa Lambda. (This was received too late for the November listing.—EDITOR.)

## Our Past National Presidents

**Elizabeth Mathias Fuqua**, (Ted to her contemporaries). Founder and First and Third National President is now home after a long illness in the hospital. It was your Editor's privilege to visit with her last summer and such a visit about early Mu Phi days. Her two sons live in California and Elizabeth spends the winter months with them. Always abreast of educational trends, she has been active in the A.A.U.W., the Medical Auxiliary, and the Graphic Club, and served as president of the last two. Elizabeth is proud of Mu Phi and intensely interested in its progress.

**Myrtal Palmer Leach**, Mu Phi's first delegate to convention and Second National President, and her husband live in Salem, Massachusetts. Through Katharine Shirley's efforts we were happy to locate Myrtal just before going to press. We hope to tell you more about her later.

**Roxillette Taylor Yeates** was married just after the Lawrence, Kansas Convention when her term of office expired and went out to a Wyoming ranch and a log house which John had ready for her. Her many friends sighed and were sure she and her grand piano were lost forever. But not so, Roxillette, who had such a large piano class in St. Louis, soon found music lovers in the wilds and established a class in Cody. They recently moved from the ranch into the "city," she says Cody is so classed now, and is quite music conscious with Community Con-



ELIZABETH FUQUA AND SON JOHN

certs and Local Choral Societies. She has a large piano class and gives two public recitals each year. A number of her pupils are heard over the radio. Her son, Jack, is an electrical engineer but finds time to sing in a choir in Washington, D. C., and occasionally play the violin. Roxillette says on two occasions visiting artists have recognized the insignia on her Mu Phi ring and that it is always a thrill to meet sorority sisters who come west.

**Lucille Eilers Bretschneider** is such a versatile musician that she

should have more days in the week. She has a large piano class, spending two days in nearby suburbs of Cincinnati, is organist at Clifton Avenue Science Church and does a great deal of coaching and accompanying. In her spare (?) time, she says—"I knit, needlepoint, tend my flowers (Lucille has a green thumb) and write letters to my son." Her son Carl is midshipman third class at Annapolis. After a cruise to Lisbon, Leghorn, Rome, Pisa, Florence, Gibraltar, and Cuba last summer he joined Lucille at Put-in-Bay where they spent their vacation on an island.

**Orah Ashley Lamke**—now National Editor.

**Bertha Marron King**—you all know is our National Chairman on Ritual. This with all five chapters in and about Minneapolis claiming her, and acting as advisor to the three active chapters seems a busy life in itself, but all this and membership in many musical organizations in the city and state are sandwiched in between her heavy full-time schedule as a faculty member of the Piano Department of the MacPhail School of Music. Her hobby is her "ducky cottage" in the pines of northern Minnesota. A very busy life and she says, "I love it."

**Elizabeth Ayres Kidd**—we all know as a teacher, lecturer, writer and pilot of some Mu Phi unit. She is now president of our rather new Evanston-North Shore Alumnae Chapter. Is chairman of the North Central Division of National Project on Creative Music of the Music Educators National Conference, and Director of the

Department of Musicology, New Trier Township High School, Winnetka, Illinois. Elizabeth gave a lecture demonstration for the Chicago Alumnae of Wisconsin University recently and just returned from such a lecture on pre-Spanish-Latin American musical instruments in Fort Wayne, Indiana.

**Ava Comin Case**—our beloved recent past President since giving up her Mu Phi duties is teaching full time in the Piano Department of the University of Michigan. The University has wanted this for a number of years but she says with a family and Mu Phi, she could only do fifteen hours. That seems a heavy schedule when we think of all she accomplished for our sorority. She has a number of Mu Phi students. Her older son was married just before convention and the younger one is living in the fraternity house so she and husband, Lee, feel they are on a second honeymoon after celebrating their twenty-fifth anniversary this fall. Ava appeared on the Detroit Alumnae Founders' Day program. On November 29 on the Ann Arbor Alumnae program—Gave a piano recital for the Lansing Alumnae December 1 and will give a recital in Ann Arbor in February. She is Vice President of the P.P.A. and was guest speaker when a new panhellenic group was formed in Pittsburgh in October. She enjoyed meeting some of our Pittsburgh Mu Phis there.

Our appreciation to these sisters who laid such a strong foundation and built so well. In loving memory

(CONTINUED ON PAGE 26)



# Chapter Notes

**Mu Nu** chapter conducted an information bureau for new students on the campus during registration week. Appreciation for the help was expressed by faculty and students, so we plan to do this each semester.

**Phi Tau** chapter gave a reception for their initiates with the administration staff and music faculty, the college members of Phi Mu Alpha and Sigma Alpha Iota on the campus as guests.—Seven outstanding pledges wore deep purple velveteen berets during the last week of pledge-ship—Portions of church services are offered in and around Denton—We charter a bus for students attending the Dallas Symphony concerts, a service to the School of Music and giving a wider acquaintance of Mu Phi among the students—We join Phi Mu Alpha and Sigma Alpha Iota in presenting a full scholarship each fall to an outstanding freshman student.

**Epsilon Alpha** chapter shared a program November 10 with the Music Club of the College of St. Catherine—After attending convention Sister Mary Davida started work on her Ph.D. at Eastman's School of Music—Sister Regina Marie attended Northwestern University during the summer to continue work on her Master's degree—Patricia Koempel is at the University of Minnesota to work on her Master's degree. She was awarded a teaching fellowship.

**Phi Theta** chapter cooperating with Delta Phi Delta, Lindenwood's

local music organization opened the school year with a tea given for all music majors and minors—Barbara Ann Little and Lucette Anne Stumberg, who graduated last June, were awarded at Commencement time a Lindenwood Fellowship for graduate study, which is being divided between them. Barbara Ann is at Iowa University this year and Lucette, Texas University.

**Phi Lambda** chapter celebrated Founders' Day with a banquet with the Patrons and Patronesses as guests. A musical program and a talk on Mu Phi's project Gad's Hill followed—A chapel program for the University student body and a program of American music open to the public will be given soon.

**Phi Upsilon** chapter enjoyed entertaining Mildred Christian, National First Vice President, in September with a luncheon and a tour of Boston University's new campus. Many members hold church positions whereby they gain experience and help earn part of their college expenses—Joined with Boston Alumnae chapter and Beta in a Founders' Day concert—After the installation of Mu Alpha local musical fraternity as a new chapter of Phi Mu Alpha, Mu Phis entertained with refreshments.

**Epsilon Zeta** chapter joined with Phi Mu Alpha on our campus in September to sponsor a picnic for the purpose of honoring our music faculty and new music majors while also publicizing our organizations.

**Phi Sigma** chapter initiated six outstanding girls at the Edgewater Beach Hotel on October 24.—A very successful Founders' Day celebration was held in Recital Hall at De Paul University with Mu Xi, Sigma, and Iota Alpha. Each chapter contributed to the program which included piano, flute, voice, and an unusual trio composed of three cellos.

**Kappa** chapter opened the school year with an open reception, September 26 for new students—A rush party and musicale was held at the home of one of our patronesses. November 13 was both Founders' Day and our fall initiation. Six fine musicians were welcomed to our chapter after which a banquet was held at the Riley Hotel.

**Chicago Alumnae** chapter has held two Musicales-Teas for their scholarship fund—The first presented Symons Hoierman, soprano, Rhea Shelters, accompanist; duo-pianists, June Weybright Reeder and Eulalia Stade; Mu-Art Trio with Octavia Gould, piano, Minnie Cedargreen Jernberg, violin and Dellah Vail Borders, cello.—The second featured Margaret Farr Wilson, pianist; Elva McMullen Gamble, soprano, with Marie Lutman Keller, accompanist; Minnie Cedargreen Jernberg, violinist, with her daughter, Mrs. Collins as accompanist.—A third program planned by the Ways and Means Committee was a lecture and films on "Berlin Today" by Howard Denby, our Linda Sool's husband, who has recently returned after three years in Germany.

**Des Moines Alumnae** were happy to present Eunice Podis, a Mu Phi of whom we are all proud, in a musicale held in Des Moines' new

Art Center—The proceeds were used to augment the scholarship fund—This year's award contest was held on Founders' Day. Betty Jo Burton, a Mu Phi on Drake University staff presented a song cycle at our first meeting.—Our Mu Phi sextets gave a group of songs from foreign countries at Christmas time.

**Kansas City Alumnae** have made plans for an outstanding season of Tuesday Morning Musicales. This will be the twenty-seventh season. All the money goes to the scholarship fund.—Most welcome to our membership this fall is Joan Baker, Gamma, who is teaching at Kansas City University. Other Mu Phis teaching there are Mary Dawson, Mary Weaver, and Virginia Mackie.

**San Jose Alumnae Club** sends greetings and appreciation to all for their words of welcome and congratulations—A program was presented early in October for the San Francisco Alumnae Chapter — A joint Founders' Day Musical Tea with Phi Mu chapter was given at the home of Marjorie Sherman.

**Detroit Alumnae Chapter** was entertained at a musicale by Dr. Carl Beutel, pianist, and Earl Morse, violinist, at the Morse Music School. The program included the Cesar Franck Sonata for violin and piano.—Our president, Marion Jewell, wrote the words and music to the Mu Phi Grace which was sung at the National Convention in Cleveland.

**Spokane Alumnae Club** celebrated Founders' Day with a buffet supper and a mother-daughter piano duo program by Irmingard King

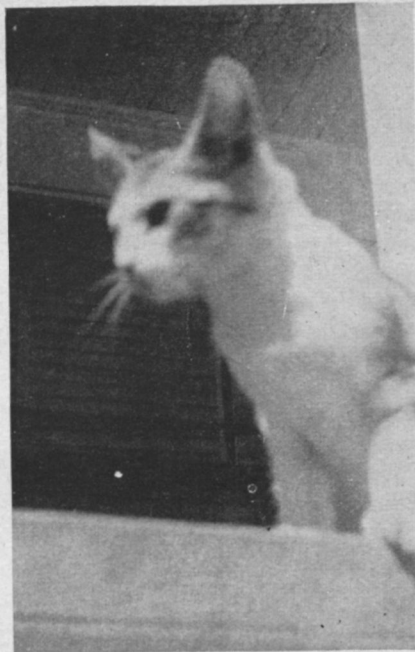
(CONTINUED ON PAGE 27)

# One Big Family

BY BARBARA DUPUY

LAST year Lois Benedict, a Mu Nu senior talked Elizabeth Griffin into turning over her home to the Mu Nu chapter for a Co-op house. Eleven Mu Phis now share this home. There are two separate units upstairs and down, each unit has a kitchen, fully equipped and a dining and living room. The girls share the work and responsibilities of cleaning and setting up the schedule. There are pianos, property of the girls living in the house, to practice upon and time schedules arrange hours for each person. The duties rotate each week with two girls at a time doing cooking and marketing and the others keeping the house clean. The girls are really learning to cook and are always tempting each other with their new experiments. The house hasn't blown up yet with any of our baking powder biscuits, but we keep our fingers crossed. Occasionally we invite friends in and have formal dinners and every birthday is celebrated with cake and song. We must be good for five of the girls who have lived in the house will be married by Christmas.

The active chapter holds its meetings and many social gatherings here.



MIMI (HOUSE MASCOT)

On meeting nights many of the girls eat at the house to save the time of going home and we have merry dinner talks.

The house runs under its own hours of quiet, and problems are brought up and discussed and thoroughly ironed out by the occupants. We are trying to learn to live together and share our music with one another. The Actives and Alumnae of other chapters are invited to spend their summer at the house, if they are going to be in the city for any of the summer school sessions. They should contact the President, Barbara Dupuy at 725 W. 32 Street, Los Angeles 7, California.

We highly recommend the idea to others as a fine way to share music, friendship, and learn the lessons of harmonious living.

# Mu Phis Here and There

June Weybright Reeder, Evanston-North Shore Alumnae chapter, is head of the piano educational department of the American Academy of Music, a subsidiary company of Mills Music, Inc. She has written a set of books which was displayed at the recent M.T.N.A. in Chicago. June will begin a lecture course for them at Lyon-Healy in Chicago the middle of January.

Mary Ellen Whitson, past National Treasurer, wrote the lives of the composers for the piano student programs presented at the State Festival.

Gilderoy Scott, Mu Gamma, former president of the Chicago Alumnae Chapter and head of the Voice Department of Frances Shimer College, Mt. Carroll, Illinois, was recently married. She is now Mrs. A. M. Newens and lives at 123 Winchester Way, Falls Church, Virginia. Gilderoy is anxious to meet any sorority sisters and hopes to get back in Mu Phi work.

Edith Fairham a senior member of Phi Lambda chapter was contralto soloist in the Messiah in Salem, Oregon.

Adelaide Adams, former president of the St. Louis Alumnae chapter, with her husband, the Reverend Hampton Adams, attended the first meeting of the World Council of Churches at Amsterdam, August 22 through September 4. They were able, at the same time, to witness the

ceremonies commemorating the abdication of Queen Wilhelmina of the Netherlands, and the investiture of the new Queen Juliana. Adelaide has described the elaborate pageant portraying periods of the retiring queen's life, which was staged by the populace of greater-Amsterdam, as all pomp and circumstance. She particularly enjoyed seeing the children of the royal family. A very significant part of the trip was their sojourn at Berchtesgaden, Germany, where they were guests of the Chaplins of the Disciples Church. This was a meeting of all of the Chaplins in the American Zone. The invitation came through Major Richard Cheatham of Heidelberg. The beauty of this former Hitler stronghold will never be forgotten. Other places visited were: Switzerland, France, England and Scotland. In all of the countries touched by the war, Adelaide was most impressed with the dauntless spirit of the people.

## IN MEMORIAM

Geraldine Rode, Nu, San Francisco Alumnae Chapter was killed this last August when a tire on the automobile she was driving blew out. Her husband and two sons who were with her were not injured. Geraldine was a devoted mother, active worker in church and schools, organist and teacher. She is greatly missed and mourned by her community and sorority sisters. Our deepest sympathy goes to her family and many friends.



NEW ANNUAL TRIANGLE  
SUBSCRIPTIONS

Kirk, Vallie N. (Mrs.), Gamma  
1257 Mac Vicar, Topeka, Kansas  
Vallie is busy teaching piano and  
playing professionally. She is the  
mother of Jacqueline McDorothy  
Kirk a Sigma Mu Phi.

Clements, Mary Tucker Noble (Mrs.  
John A.), Zeta  
209 East Jefferson Street, Craw-  
fordsville, Indiana

DuBois, Millicent Robinson (Mrs.  
Hascall B.), Lambda  
E. School Lane, Yardley, Bucks  
Co., Pennsylvania

Fish, Mildred Osburn (Mrs. Wal-  
ter), Lambda  
202 South Avenue, DuBois, Penn-  
sylvania  
Mildred has a position as church  
organist.

Stannard, Bernice Yeo. (Mrs. George  
E.), Nu  
545 E. Mariposa Street, Altadena,  
California

Wendland, Melba M. Parkes (Mrs.  
Harry J.), Mu Nu  
275 N. Hillcrest Blvd., Inglewood,  
California

Nelson, Ruth P., Mu Nu  
1619 Portland Avenue, Minne-  
apolis, Minnesota

Perry, Dorothy Lee Seidel (Mrs. Ed-  
win), Pi  
121 Stephenson Avenue, Me-  
nominee, Michigan

Meyer, Marguerite Goude (Mrs.  
Marshall F.), Pi  
943 Bevan Street, San Gabriel,  
California

Newens, Gladys Gilderoy Scott (Mrs.  
A. M.), Mu Gamma  
123 Winchester Way, Falls  
Church, Virginia

MARRIAGES

Mu Nu:  
Marise Murphy to Jim Blake. They  
were married on the "Bride and  
Groom" program broadcast over  
station A.B.C. They received  
many gifts and a honeymoon in  
Canada.

Phi Pi:  
Tennie Marie Dyer to Walter L.  
Lengel—June 6, 1948  
Zoe Kane to David Levenson—June  
20, 1948  
Zellah Mae Dustin to Wayne L. Up-  
ton—July 1, 1948  
Mary Frances Titus to Merrill Gres-  
ham—June 1, 1948  
Abbie Slentz to Cecil Kenagy—  
August 15, 1948

Epsilon Alpha:  
Gloria Krautkremer to James Barry  
—July 31, 1948

Lansing-East Lansing  
Alumnae Club:  
Leone Schavey Butters to Rev. Dale  
Emerson Turner—September 26,  
1948, at Grand Rapids, Michigan

Mu Gamma:  
Gladys Gilderoy Scott to Adrian M.  
Newens

Spokane Alumnae Club:  
Marjorie Catlin to John G. Daly—  
last summer

—————

*In this New Year, just to be  
May sadness turn in flight,  
May peace and joy enter in  
Your heart, with all its might.*  
O.A.L.

BIRTHS

OMEGA—Mr. and Mrs. Robert  
Daniel Heater (Shirley Ann Bu-  
ford), 2010 Bird, Joplin, Mis-  
souri—a daughter, Diana Lee on  
November 25, 1947

PHI PI—Mr. and Mrs. Charles El-  
liott (Marjorie Stoner)—a son,  
Rahn Roy on November 2, 1948

DETROIT ALUMNAE CHAP-  
TER—Keith and Betty Moore—  
a daughter, Mary Jean, on Jan-  
uary 25, 1948  
Robert and Margaret Thibideau—  
a son, Charles Richard, on August  
13, 1948

LANSING-EAST LANSING  
ALUMNAE CLUB—Einer and  
Beatrice Brody Larsen—a daugh-  
ter, Margaret Christine, on Jan-  
uary 13, 1948  
Morton and Celia Van Arsdale  
Decker—a son, Van Arsdale, on  
March 12, 1948

PHI SIGMA—Curtis and Gretchen  
Bailey—a daughter, Elizabeth  
Ann, on September 17, 1948

*Thank You*

DEAR SISTERS:  
Your many expressions relative  
to my illness have been received.  
It reaffirms our sisterhood. From  
the depth of my heart I thank you.  
I am always with you in spirit.  
MARY ELLEN WHITSON

FRATERNITY PUBLIC  
RELATIONS

(CONTINUED FROM PAGE 5)

trained to an awareness of the pres-  
ent-day problems; how they are  
taught to work not only in their own  
localities and among their own mem-  
bers but are taught to add their  
small efforts to the larger good; and,  
lastly, how they are made increas-  
ingly aware of the need for their par-  
ticular talents today in the postwar  
world through the unspoken but  
surely well-supported thought: "Mu-  
sic for all, first; for my fraternity, in-  
dividually, and me, personally, last."

(This speech was made at a  
round-table discussion at the last  
Professional Panhellenic Convention.  
Ava is now Vice President of the  
P.P.A.)



EPSILON ETA CHAPTER

(CONTINUED FROM PAGE 8)

ulty advisor of the group is Miss Ce-  
cilia Dvorak.

In greeting the guests at tea, Presi-  
dent Maxine Banton of Epsilon Eta  
chapter said,

"If pride is evil, as some will in-  
sist, then I am very much afraid the  
great amount of pride I feel today  
puts me somewhat in the position of  
a Miss Faustus—selling out for a mo-  
ment or two of happiness. But I will  
confess, I think the exchange a good  
one. Without doubt the other initi-  
ates present will agree with me on  
this: the George Pepperdine Col-  
lege chapter of Mu Phi Epsilon has  
known no other moment of such  
heartening satisfaction, such com-  
plete happiness. Our acceptance

into Mu Phi Epsilon brings honor not alone to the charter members in this chapter, but also upon the entire college. With enthusiasm, felicity, abundant energy, and most important perhaps, friendliness, we shall work wholeheartedly for this national organization."

The Founders' Day banquet in the evening with all the chapters of the Los Angeles area was a thrilling experience. We are most happy to be a part of this great sisterhood, Mu Phi Epsilon.

### A MU PHI MUSICIAN IN PRESENT DAY ATHENS

(CONTINUED FROM PAGE 10)

copy of this book given her by Mr. S. Peristeris as a very precious and necessary part of the research in which she is now engaged—that of transcribing the music from Byzantine notation, and, with the help of her husband, making translations. She hopes, in collaboration with Mr. Peristeris to publish the collection in this country, so that these bits of living music history may be of value to more musicians than they are in their present form.

Dr. Alexopoulos is now on the faculty of Michigan State College and we are very proud to have Juliet as a member of the Lansing-East Lansing Alumnae Club.

### OBSERVATION ON MUSIC AND MUSICIANS IN POST WAR ATHENS

(CONTINUED FROM PAGE 11)

sic books—a library, probably the finest in the world, of some 500 volumes including very rare 15th and 16th century hand illuminated books and manuscripts, to the collection of which he has devoted his entire life, and with which, even throughout the

starvation years of the war he steadfastly refused to part. Here indeed is a unique opportunity for some musical foundation to acquire a rare library of outstanding value in the field of musicology!

### RECENT PUBLICATIONS OF MU PHI COMPOSERS

(CONTINUED FROM PAGE 17)

The Measuring Worm, Grade 1, Huckleberry Finn, Grade 2, with a Yo-Heave-Ho, Grade 2-3, The Lone Prairee, Grade 3, The Brook, Grade 4—Willis Music Company.

Portland Alumnae Chapter:

Jean Williams—Ring Out, Wild Bells—a three part women's chorus—Harold Flammer.

Evanston-North Shore Alumnae Chapter:

June Weybright (Mrs. Reeder)—Oft Heard Tunes, eight pieces in book and separate sheets; Oft Heard Early American Tunes, ten pieces in sheet and soon in book—Clayton F. Summy.

A Dozen Duets, music and pictures—Willis Company.

Technic for Pianists Books 1 and 2, All in a Day (includes pictures), Jungle Music—Mills Music Inc.

### OUR PAST NATIONAL PRESIDENTS

(CONTINUED FROM PAGE 19)

we pay tribute to Elfrida Langlois Kent, Ora Bethune Johnson, Mary Towsley Pfau, and Persis Heaton Trimble.

We are sorry that we did not hear from Alice Bradford Peck, Harriet Wright, Doris Benson, or Dorothy Paton. We hope we can give you up to date news of them in a future issue.—EDITOR.

### CHAPTER NOTES

(CONTINUED FROM PAGE 21)

Crowder and daughter, Hazel. Our club is well represented in the musical life of the city. Three of our members are active in the Spokane Music Teachers Group, two members are on the music faculty of Whitworth College, three in Spokane Public Schools, and three playing in the Spokane Philharmonic Orchestra.—We are especially thoughtful of two members, Margery Segessemann Halverson and Marian Lawton, who are confined because of illness and an automobile accident.

Eugene Alumnae Club extends deepest sympathy to Dee Davidson Sigwart for the loss of her husband. Dee is a charter member and has been treasurer of the club since its organization.

### REMEMBER GAD'S HILL MUSIC SCHOOL

THROUGH your magazine subscriptions Mu Phi Epsilon sustains one of her most worth-while projects, Gad's Hill Music School. Just a little effort on your part gives such a large return, when you think of all the many underprivileged children who are made happy and are given a musical education by our magazine proceeds. It not only means their happiness and enjoyment but also that of their parents and of the people in their community. Make your chapter the high-

est ranking group in our Magazine Contest this year.

Remember your chapter treasury benefits by your subscription.

Remember birthdays, anniversaries, the friend who entertained you so beautifully, and the friend who is ill by sending your subscription through your local chairman, to

GRAYCE KENT CLARK  
National Chairman  
Magazine Subscription Agency

### EPSILON ZETA

(CONTINUED FROM PAGE 7)

a tea honoring the guests and new members completed the day and we were launched on a new experience on our campus. Each member feels the responsibility of charter membership and is striving to make the beginning of Epsilon Zeta a meaningful one.

Please get your TRIANGLE material in early. You will have a much better magazine if everything does not rush in on the deadline.—EDITOR.

Plan your budget to include the 1950 Convention in Seattle!







**MRS. EVELYN LUCKEY** (center), an office worker, was presented a check for \$200 last night by Dr. William Heyne, director of the 1947 Bach Festival, for her entry in the festival contest. **Mrs. Dorothy Gaynor Blake** (right), a composer, was also a prize winner. —Globe-Democrat Photo

## Singer Jean Browning Madeira Engaged by the Metropolitan

**Ex-St. Louisian Who Began as Pianist and Appeared Here Switched to Voice in 1940.**



**JEAN BROWNING MADEIRA**

**Jean Browning Madeira**, St. Louis contralto who began her musical career as a pianist, has been engaged by the Metropolitan Opera Company of New York, Edward Johnson, the Met's general manager, announced today.

The singer, daughter of Mrs. Lee R. Browning of the Parkview Hotel, 40 North Kingshighway, thus reached the high point of a career that began here after intensive study in piano and voice, with Leo Miller and Bernard Ferguson, further studies in New York and leading roles with the Chautauqua (N.Y.) and San Carlo Opera companies.

Several years ago, as a pianist, she won the St. Louis Symphony Society contest for young artists, appearing with the St. Louis Symphony Orchestra as a soloist at a children's concert. By 1940, however, she had switched to voice and was one of four young women in the United States to win two-year scholarships to the Juilliard School of Music in New York City.

She remained at the Juilliard school for five years, following which she gave concerts and recitals, including appearances as

soloist with the Little Symphony Orchestra. She was featured soloist in the Bach Festival here in 1945, then went on to appearances with the Chautauqua and San Carlo groups. She spent three months touring parts of Europe last summer with the Menotti Opera Company.

Her husband is Francis King Carey Madeira, organizer and conductor of the Rhode Island Philharmonic Orchestra and an assistant professor of music at Brown University, Providence, R. I. He, too, has appeared here with the Little Symphony.

### Leginska Presents Pupils

Ethel Leginska's annual "little symphony concerto program," which serves to present her pupils in professional recital, again turned up its usual complement of fantastically able and youthful players. Among them were such previously heard and praised players as Marilyn Needley and Josephine Rodriguez, each of whom showed steady development, and newcomers Anne Ware (51), Leon Zambrowicz and Peggy Constance. Miss Leginska's stable of pianistic prodigies is the musical equivalent of Calumet Farms' stable of race horses. They are winners, every one.

MUSICAL COURIER

### Ruth Watanabe has been appointed librarian of Sibley Music Library at the Eastman School of Music, to succeed Barbara Duncan who retired after serving as librarian since 1922. Miss Watanabe is a member of the American Association of University Women, the Modern Language Association, Music Library Association, American Musicological Society, Phi Beta Kappa Alumni of Southern California, Phi Kappa Phi, senior honor scholastic fraternity; Pi Kappa Lambda, graduate honorary music society; Delta Phi Alpha, German honorary; Epsilon Phi, English honorary, and is president of Rochester Alumnae Chapter of Mu Phi Epsilon, music sorority. Sibley Library is the largest collegiate music collection in the country.

### Mu Phi Epsilon

The activities of Mu Phi Epsilon for the Summer have centered very largely around the 1948 Convention. The Great Lakes National Convention was held in Cleveland June 23-26.

Several changes were made in the officers of the sorority for the coming biennium. Margarette Wible Walker, Dean of Women and Professor of Music at Texas Technological College, Lubbock, Texas, former vice president for six years, was elected National President; Mildred Martin Christian, Cleveland, Ohio, former Editor, was elected Vice President; Orah Ashley Lamke, past president, was elected Editor of the Triangle, the magazine of the sorority. The other officers remained the same, Mrs. Ruth Row Clutcher, second Vice President, Philadelphia, Pa.; Mrs. Hildur Lavine Shaw, third Vice President, Fargo, North Dakota, and Mrs. Bernice Swisher Oechsler, National Executive Secretary-Treasurer, Sylvania, Ohio.

With the resignation and subsequent moving to the Pacific Coast of Frances Huff Butler, Director and Representative on the Settlement Board of Gad's Hill Center, Winifred Erickson was appointed her successor. Mu Phi Epsilon School of Music at Gad's Hill Center is the altruistic project of the sorority, and plans for its continued growth and development fill an important place in the program of the organization. Miss Erickson has served on the staff of the music school for six years, and with her appointment plans will continue in much the same direction as before.

The 1950 Convention will be held in Seattle, Wash., with the Pacific Province acting as hostess. This is the first time since 1936 that a convention will be held on the Pacific Coast.

Plans for the coming biennium include the installation of several active chapters in the early fall; development of plans for the Sterling Memorial under the chairman-

## Mu Phi Epsilon National Convention

The Great Lakes Convention of Mu Phi Epsilon, National Music Sorority, was held at the Hotel Cleveland, Cleveland, Ohio, June 23-26. Helen M. Hannen, of Cleveland, acted as general chairman, and active and alumnae chapters within the Great Lakes Province participated as hostesses.

This Convention marked the 29th biennium of a distinguished and old professional sorority. Helping to make the meeting of nearly 300 delegates one long to be remembered, was the well-coordinated program of continuous business and professional activity under the direction of Ava Comin Case, National President of Mu Phi Epsilon.

The four days included varied and interesting events, from the opening luncheon where a representative of the Honorable Thomas E. Burke, Mayor of Cleveland, addressed the group, to the closing business meeting, when newly elected national officers were installed. This roster included: Margaret Wible Walker, newly elected President, of Lubbock, Texas; Mildred Christian of Lakewood, Ohio, First Vice-President; Ruth Row Clutcher of Upper Darby, Pa., Second Vice-President; Hildur Lavine Shaw of Fargo, N. D., Third Vice-President; and Orah Ashley Lamke of Richmond Heights, Mo., National Editor. Mrs. Bernice Swisher Oechsler was re-appointed to the position of Executive Secretary-Treasurer in charge of the National Executive Office.

A highlight of intense interest was found in the Cleveland Orchestra Pop Concert on June 23, when Eunice Podis, pianist, appeared as soloist with the orchestra under the direction of Rudolph Ringwald, conductor.

Other brilliant members of Mu Phi appeared in the Original Composition Concert; the Alumnae Chapter Concert; and the Active Chapter Concert.

Hildur Lavine Shaw headed activities when Gad's Hill, Mu Phi Music Settlement in Chicago, was discussed.

To Mildred Martin Christian, outgoing Editor of the Triangle, and incoming First Vice-President, goes credit for many correlating activities, and especially the informal supper gathering where Bernice Oechsler, National Executive Secretary-Treasurer, brought out the full meaning of Mu Phi Epsilon in her homey talk on "Mu Phi Friends."

At the President's Reception, preceding the Formal Banquet, over four hundred guests were greeted by the National Council, among them being Rt. Hon. Carl V. Weygandt, Chief Justice of the Supreme Court of the State of Ohio, who later addressed the audience. Also appearing on the banquet program was Mrs. Marie Morrissey Keith, National President of the National Federation of Music Clubs, and a member of Mu Phi Epsilon.

At a Formal Dinner in the Ball Room of the Hotel Cleveland on Thursday, June 24, Margarette Wible Walker, outgoing First Vice-President, and newly elected National President, presided as mistress of ceremonies—interpolating into the main stream of entertainment formal greetings to Phi Chapter of Mt. Union College, Alliance, Ohio, whose twenty-one members were formally initiated at the Convention.

Post Convention attractions included an afternoon concert of ancient instrument music and a tour of Severance Hall on the campus of Western Reserve University. Following this, the entire Convention group was entertained at a formal tea by the Women's Committee of the Cleveland Orchestra, with Mrs. Carl V. Weygandt, president, and Mrs. H. Lee Bassett, chairman, presiding in the Committee Board Rooms.



**ADELAIDE VAN WEY**, contralto, on her return to Silvermont, her home in Brevard, N. C. Her summer concerts included programs of folk songs of the Americas at Teachers College, Cullowhee, N. C., and in the Mirror Room of the Hotel Noble, Blytheville, Ark. In addition to her repertory of regional folk tunes of the United States, spirituals, the Creole songs which she has published in her recordings, and the South American contributions, the contralto has featured folk songs in contemporary settings by Paul Bowles, Victor Young and other American composers. At the piano, Robert Nobl Hill was the assisting artist.

### Mu Phi Epsilon Convention At Cleveland

The twenty-ninth biennial convention of M Φ E, national music sorority, was held in Cleveland, Ohio, June 23-26. The four-day conferences highlighted the aims of the sorority—to work together harmoniously to further the cause of American music and the American musician and to foster a close friendship among the members of the sorority.

The convention, presided over by the retiring national president, Ava Comin Case, concerned itself with the ways and means of advancing the ideals through plans for chapter cooperation in national and local projects, through furtherance of scholarship loans, through national contests and chapter support of the outstanding national project, the Mu Phi Epsilon School of Music at Gad's Hill Center in Chicago.

Formal music programs by active and alumnae chapter delegates and a program of winning compositions in the 1946 original composition contest were presented.

National council members elected for the next biennium were: Margarette Wible Walker of Lubbock, Texas, national president; Mrs. Henry C. Christian, Lakewood, Ohio, first vice-president; Mrs. John Clutcher, Upper Darby, Pennsylvania, second vice-president; Mrs. W. S. Shaw, Fargo, North Dakota, third vice-president; Mrs. George W. Lamke, Richmond Heights, Missouri, editor; and Mrs. Ralph Oeschler, Sylvania, Ohio, executive secretary-treasurer.

Banta's Greek Exchange

## Music Fraternity Will Celebrate Anniversary

THE 45TH ANNIVERSARY of the founding of Mu Phi Epsilon, national music sorority, will be celebrated by the St. Louis active and alumnae chapters with a dinner at Candlelight House at 6:30 p. m. Tuesday.

Mrs. George W. Lamke of St. Louis, national editor of "The Triangle," the sorority magazine, will speak.

Other members participating in the program will be Mrs. R. V. Anderson, Miss Katherine Carmichael, Miss Cecile Coombs, Mrs. George H. Dieckman, Mrs. E. M. Galloway, Miss Mabel Henderson, Mrs. James A. Kelly, Mrs. Frank A. Neal, Mrs. Arnold F. Schoenlis and Mrs. Blaine Ulmer.

Mu Phi Epsilon was founded at the Metropolitan College of Music at Cincinnati, Ohio, on Nov. 13, 1903, for the promotion of scholarship and musicianship among members.

A national project of the organization is the Mu Phi Epsilon School of Music at Gad's Hill Settlement, Chicago, Ill. Complete support of the school is sponsored by the members.

An annual project of the St. Louis chapter is the Spring recital given by outstanding senior girls from St. Louis high schools. Scholarship medals are awarded each of the girls who are recommended by their music teachers for participation in the recital.

### Wins Song Audition.

**Mariys Ann Watters**, 19-year-old daughter of Mr. and Mrs. C. N. Watters, 231 East Forty-sixth street, has been chosen to replace Lillian Murphy on the Songs We Love program, heard on WDAP at 12:15 o'clock Sundays. Miss Murphy is in New York, where she is appearing with James Melton on Harvest of Stars. Miss Watters was chosen from approximately 500 applicants who were auditioned in the WDAP studios. She is a senior at the Conservatory of Music of Kansas City, majoring in voice under the guidance of Latonia Barnett. Miss Watters sang at the Mu Phi Epsilon national convention in Cleveland last June.

Kansas City Star  
26, 1948.



**WINS SINGING ROLE**—Mariys Ann Watters will become the regular vocalist on Songs You Love (WDAP) at 12:15 o'clock today. She was selected from a field of nearly 500 auditionists.

STAR-TIMES



### Resident Is Listed As Music Educator

The recently published 1948 edition of Who's Who in American Education carries the name of Lois von Haupt, well-known musician



Lois von Haupt

and teacher and resident of Scarsdale. Hers is the only name to represent Westchester County among the comparatively few names of music-educators listed.

She comes to the fore through her promotion of music as a cultural factor, not only in her work as a teacher but also through her extensive lecturing through such channels as the Child Study Association, Parents-Teachers Associations and piano teacher groups. Highly progressive in her work in sight-reading and keyboard harmony, her published material is listed in the Library of Congress.

This season Miss von Haupt will present at her residence a series of four public lectures, beginning September 27 on the subject of "The Significance of Musical Styles."

*Washington University Alumni Bulletin*

Jean Browning, ex-'39, is singing one of the leading roles in "The Medium," American opera, which is being presented on tour this season in London, Paris and Rome.

### Mu Phi Epsilon National Convention

CLEVELAND.—The Great Lakes Convention of Mu Phi Epsilon, National Music Sorority, held recently at the Hotel Cleveland, marked the 29th biennial. Helen M. Hannen acted as general chairman, and all active and alumnae chapters within the Great Lakes Province participated as hostesses.

Approximately 600 delegates attended the 4 day sessions of varied and interesting events and the programs formulated under the direction of Ava Comin Casse. The newly elected national officers installed included: Margarette Wible Walker, president, of Lubbock, Tex.; Mildred Christian, Lakewood, first vice-president; Ruth Rowe Clutcher, Upper Darby, Pa., second vice-president; Hildur Lavine Shaw, Fargo, N. D., third vice-president; and Orah Ashley Lanke, Richmond Heights, Mo., national editor. Bernice Swisher Oechsler was re-appointed to the position of executive secretary-treasurer in charge of the national executive office.

The new National President, Mrs. Walker, is a graduate of Willamette University, Salem, Ore, with a degree in music. She also holds two other music degrees from the University of Southern California. She is a member of Pi Beta Phi, social sorority; Phi Lambda Theta, national education sorority; and is a sponsor of Beta Sigma Phi, young business and professional women's sorority in Los Angeles.

Musical highlights of the convention were the Cleveland Orchestra Pop Concert with Eunice Podis, pianist, member of Phi Omicron Chapter, as soloist, Rudolph Ringwald conducting the Original Composition Concert; the Alumnae Chapter Concert; and the Active Chapter Concert, programs planned by Ruth Rowe Clutcher, second vice-president, national music advisor. Hildur Levine Shaw, third national vice-president, headed activities devoted to the Gad's Hill, Mu Phi Music Settlement in Chicago discussion.

The many social functions were largely attended, about 400 delegates greeting the past and incoming presidents and the National Council at the first reception where the Rt. Hon. Carl V. Weygandt, Chief Justice of the Ohio State Supreme Court, was guest speaker. At the scheduled banquet, Mrs. Walker presided, introducing entertainers and formally acknowledging the admission to membership of 21 members of Phi Chapter of Mt. Union College, Ohio, who had been initiated in due ceremony preceding the dinner program.

Post-convention attractions included a concert of ancient instrument music; a tour of Severance Hall on the campus of Western Reserve University; and a formal tea by the Women's Committee of the Cleveland Orchestra with Mrs. Carl V. Weygandt, president, and Mrs. H. Lee Bassett, chairman, presiding in the committee board rooms.

MUSICAL COURIER



ARTISS DE VOLT

In the courtyard of the Cloister, Sea Island, Ga., where she will return to give three concerts in February. Miss de Volt begins a cross-country tour the end of this month, with concerts in New Mexico, Missouri, Illinois, Iowa. Late in November she will appear in New England, including several Boston recitals, then start south with bookings in North and South Carolina. The harpist's spring tour begins in February, through Georgia, with a concert in Atlanta, on to Tennessee and Kentucky (with an appearance at Bowling Green), then into Ohio, with a program at Kenyon College; back south, and north by way of the coast, through Delaware. In July, 1949, Miss de Volt sails for Austria to teach again at the Mozarteum.

### Engaged to Wed



MISS MARJORIE LOUISE ZIMMERMAN

Mrs. Franklin L. Zimmerman, 3317 Tullamore Road, Cleveland Heights, announces the engagement of her daughter, Marjorie Louise, to Mr. Merle LeRoy Bergstrom, son of Mr. Carl J. Bergstrom, of Minneapolis, Minn. Miss Zimmerman is a senior at Flora Stone Mather College where she is president of Mu Phi Epsilon. She is also known as a harpist with the Cleveland Women's Orchestra and the Philharmonic Orchestra.

*Cleveland Plain Dealer*

### To Hear Noted Guest Artists

Members of Mu Phi Epsilon alumnae national music sorority will entertain their friends at a concert Wednesday at 8:15 p. m. in the parlors of Peoples church, East Lansing.

Guest artist Ava Comin Casse, assistant professor of piano at the University of Michigan, will play a group of numbers. They are "Adagio" (Mozart), "Rondo, op. 129" (Beethoven) and "Ballade, op. 52" (Chopin).

Mrs. Casse, graduated from Oberlin college and the University of Michigan has done graduate work in Italy. She studied in this country with Arthur Schnable. Former head of piano at Huron college, South Dakota she has done extended concert work in the Midwest. She is former national vice president of the music sorority for which she is appearing here and now holds the same office for the Professional Panhellenic association, organization composed of all professional sororities.

Local artists will appear on the program. The Mendelssohn trio consisting of Mrs. Glen Halik, pianist, Glen Halik, violinist and Mrs. Harrison Marshall cellist will perform "Trio in D Minor" (Mendelssohn), in two movements, Mrs. Einar Larsen, contralto will sing a group of numbers. They are "Hat Dich Die Liebe Beruhrt" (Marx), "Befreit" (Strauss) and two Mozart numbers—"Alleluja" and an aria from the opera, "Titus." Miss Mary Goodell will accompany her.

Both the Haliks and Mrs. Larsen have music studios in the community. Coming here in recent years from conducting and teaching positions in the west, Mr. Halik is concert master of the Lansing symphony orchestra. Mrs. Marshall has long appeared on music programs here. Mrs. Larsen, following return from graduate study in Juilliard School of Music in New York taught in Illinois Wesleyan and Pomona colleges. She is widely known for the oratorio and concert work. She has coached with Fred Patton, Louis Graver and Edgar Nelson.



AVA COMIN CASSE



BEATRICE BRODY LARSEN

Mrs. Casse, University of Michigan pianist and Mrs. Larsen Lansing contralto will take part in a Mu Phi Epsilon musical program Wednesday at 8:15 p. m. in the parlors of Peoples church, East Lansing.

*News, December 2, 1948  
Lansing - East Lansing Alumnae Club*

### Mu Phi Epsilon Musicale Draws 150 Guests Wednesday

Seasonal gatherings of Christmas greens were placed about the woman's parlors of Peoples church, East Lansing, Wednesday evening for the musicale sponsored by Mu Phi Epsilon, national professional music sorority.

### Mu Phi Epsilon Presents Musical

Alumni Group Entertains Friends and Guests

### Mu Phi Giving Guest Concert By John Toms Concert and Opera Tenor



JOHN TOMS

THE ARTS ARE PREDOMINANT this week—the drama—music. Later in the week, on Thursday, Mu Phi Epsilon, national music sorority, is bringing John Toms, tenor, of Chicago as the sorority's guest artist for its guest night. Mr. Toms' program will be presented in the ball room at Student Union, and following it, Mu Phi Epsilon is reviving a traditional custom—a reception for the artist and his accompanist, Miss Marcia Hamilton. The members of the alumnae chapter of Mu Phi Epsilon will serve as hostesses, and they will be assisted at the refreshment table by the following patronesses: Mrs. C. C. Camp, Mrs. A. R. Congdon, Mrs. J. Floyd McLain, Mrs. C. R. Philbrick, Mrs. G. W. Rosenlof, Mrs. T. J. Thompson and Mrs. D. A. Worcester.

Seating the guests at the concert will be Miss Charma Davies, Miss Eleanor Hansen, Miss Virginia Lang, Miss Ruth Padgett and Mrs. Elaine Putensen.

### St. Louisan Makes Debut at 'Met' In Opera Starring Helen Traubel



*St. Louis Post Dispatch*

—Associated Press Wirephoto.  
JEAN BROWNING MADEIRA (center) getting kisses of congratulation last night in New York from HERBERT W. COST, 374 Walton avenue, St. Louis, her sponsor, and HELEN TRAUBEL, Metropolitan Opera star.



# MU PHI EPSILON DIRECTORY

## Founders

WINTHROP S. STERLING, Mus.D.....(Deceased)

ELIZABETH MATHIAS FUQUA

## Honorary Advisory Board

ELIZABETH MATHIAS FUQUA (Mrs. John W.), 2006-7th Ave., Greeley, Colo. ....*Alpha*  
 MYRTAL PALMER LEACH (Mrs. F.), 2 Messervy St., Salem, Mass.....*Gamma*  
 ELFRIDA LANGLOIS KENT (Deceased) .....*Delta*  
 ALICE DAVIS BRADFORD PECK (Mrs. Arthur), 40 Wilmuth Ave.,  
 Wyoming, Ohio .....*Alpha*  
 ORA BETHUNE JOHNSON (Mrs. J. F.) (Deceased) .....*Theta*  
 MARY TOWNSLEY PFAU (Mrs. Wm.) (Deceased) .....*Alpha*  
 ROXIELETTIE TAYLOR YEATES (Mrs. John), 1119 Rumsey Ave., Cody, Wyo. ....*Theta*  
 ANCELLA M. FOX (Mrs.) (Deceased) .....*Iota Alpha*  
 HARRIET THOMPSON WRIGHT (Mrs. Wm. E.), 482 Glen Ave., Fresno, Calif. ....*Chi*  
 DORIS BENSON (Mrs. Walter), Spikeswood Farm, Woodruff, Wis. ....*Iota Alpha*  
 PERSIS HEATON TRIMBLE (Mrs. Charles M.) (Deceased) .....*Mu Alpha*  
 LUCILLE EILERS BRETTSCHEIDER (Mrs. August, Jr.), 3426 Morrison Place,  
 Clifton, Cincinnati, Ohio .....*Alpha*  
 ORAH ASHLEY LAMKE (Mrs. George W.), 1327 McCutcheon Road,  
 Richmond Heights 17, Mo. ....*Delta*  
 DOROTHY ELIZABETH PATON, 1307 Iroquois Place, Ann Arbor, Mich. ....*Gamma*  
 BERTHA MARRON KING (Mrs. Daniel P.), MacPhail School of Music,  
 Minneapolis, Minn. ....*Mu Epsilon*  
 ELIZABETH AYRES KIDD (Mrs. A. E., Jr.), New Trier High School,  
 Winnetka, Ill. ....*Mu Xi, Sigma*  
 AVA COMIN CASE (Mrs. Lee O.), School of Music, University of Michigan,  
 Ann Arbor, Mich. ....*Gamma*

## National Council—1948-50

*President*—MARGARET WIBLE WALKER, Dean of Women, Texas Technological  
 College, Lubbock, Texas .....*Mu Nu, Los Angeles Alumnae*  
*First Vice-President*—MILDRED MARTIN CHRISTIAN (Mrs. Henry C.),  
 1568 Lauderdale Ave., Lakewood 7, Ohio .....*Mu Phi, Cleveland Alumnae*  
*Second Vice-President*—RUTH ROW CLUTCHER (Mrs. John),  
 21 Kent Road, Upper Darby, Penn. ....*Omicron, Philadelphia Alumnae*  
*Third Vice-President*—HILDUR LAVINE SHAW (Mrs. W. S.),  
 1319 Ninth Street, South, Fargo, North Dakota .....*Phi Iota*  
*National Editor*—ORAH ASHLEY LAMKE (Mrs. George W.), 1327  
 McCutcheon Road, Richmond Heights 17, Missouri ....*Delta, St. Louis Alumnae*

## National Executive Office

*Executive Secretary-Treasurer*

BERNICE SWISHER OECHSLER (Mrs. Ralph J.) .....*Epsilon, Toledo Alumnae*  
 6604 Maplewood Avenue, Sylvania, Ohio

## MU PHI EPSILON

## National Departments

### ALUMNAE BOARD

HILDUR LAVINE SHAW, *Alumnae Advisor*

*Atlantic Province*—  
*Pittsburgh*—Jessie Yuille Yon (Mrs. Charles), 5075 Forbes St., Pittsburgh 13, Pa.  
*Washington*—Quinta J. Frey (Mrs. J. W.), 4236-47th St. N.W., Washington 16,  
 D. C.  
*Great Lakes Province*—  
*Chicago*—Marie L. Keller (Mrs. Warren H.), 10020 So. Hoyne Ave., Chicago  
 48, Ill.  
*Cleveland*—Thelma M. Goldsword (Mrs. Norman), 3400 Hollister Road, Cleve-  
 land Heights 18, Ohio.  
*East Central Province*—  
*Minneapolis*—Lucille T. O'Connell (Mrs. G. E.), 5733 Wentworth, Minneapolis  
 9, Minn.  
*St. Louis*—Pauline J. Baker (Mrs. Paul W.), 7028 Kingsbury Blvd., University  
 City 5, Missouri.  
*West Central Province*—  
*Denver*—Violette M. McCarthy (Mrs. Lorne V.), 1035 So. Fillmore Way, Den-  
 ver 9, Colorado.  
*Wichita*—Lois Ayres Gordon (Mrs. Russell), 602 So. Green, Wichita, Kans.  
*Pacific Province*—  
*Beverly Hills*—Esther B. Funck (Mrs. Roland), 251 So. McCarty Drive, Beverly  
 Hills, Calif.  
*San Francisco*—Marcelle W. Vernazza (Mrs. J. A.), 334-11th Ave., San Fran-  
 cisco 18, Calif.

### CONSTITUTION AND BY-LAWS

MARTHA MANSFIELD SEIFRIED, *Chairman*, 3117 Portsmouth Ave., Cincinnati 8, Ohio

### EDITORIAL BOARD

*Atlantic Province*—  
*Psi*—Odette Hutchison, Women's Coll., Bucknell Univ., Lewisburg, Penn.  
*Washington*—Gertrude D. Parsons (Mrs. Harold A.), 732 Whittier St., Takoma  
 Park 12, D. C.  
*Great Lakes Province*—  
*Epsilon*—Guyneth F. Redman (Mrs. Clyde), 666 Thayer St., Toledo 9, Ohio  
*Cleveland*—Esther M. Keller, 1261 Fry Ave., Lakewood 7, Ohio  
*East Central Province*—  
*Epsilon Gamma*—Sue R. Stockett, Belhaven College, Jackson, Miss.  
*St. Paul*—Harriet G. Allen, 1855 Ashland Ave., St. Paul 5, Minn.  
*West Central Province*—  
*Xi*—Harriet Harlow, 1001 West Hills, Lawrence, Kansas  
*Wichita*—Carol S. Holman (Mrs. Elton), 1845 No. Lorraine, Wichita 6, Kansas  
*Pacific Province*—  
*Mu Nu*—Barbara Dupuy, 725 West 32nd St., Los Angeles 7, Calif.  
*San Francisco*—Symeta Z. Kuper (Mrs. Nathan), 1441 Bonita St., Berkeley 9,  
 Calif.

### FINANCE

*Great Lakes*—DOROTHY E. PATON, *Chairman*, 1307 Iroquois Place, Ann Arbor, Mich.  
*Atlantic*—Katharine Shirley, 11 Park Drive, Boston, Mass.  
*East Central*—Helen Melaas, 1518 Washington, Des Moines, Iowa  
*West Central*—Beverly Coldsnow, 4332 East Lewis, Wichita, Kansas  
*Pacific*—Eloise J. Smith (Mrs. Glee C.), 850 So. Shenandoah, Los Angeles, Calif.

### INTERNATIONAL MUSIC RELATIONS AND REHABILITATION

BERNICE L. AUSTIN, *Chairman*, 1083 A Shady Ave., Pittsburgh 6, Penn.

## MAGAZINE SUBSCRIPTION AGENCY BOARD

- GRAYCE KENT CLARK (Mrs. Roy L.), *Chairman*, 1616-46th St., Des Moines, Iowa  
*Atlantic Province*—Gladys Shafer, 449 West 21st St., New York 11, N. Y.  
*Great Lakes Province*—Eunice Groth (Mrs. W. W.), 4824 W. Townsend St., Milwaukee 10, Wisc.  
*East Central Province*—Zelma L. Hicks (Mrs. Leon), 5221 No. Pennsylvania, Indianapolis, Ind.  
*West Central Province*—Hettie M. Baum (Mrs. E. Eldon), 2544 N.W. 30th St., Oklahoma City 7, Okla.  
*Pacific Province*—Gertrude Squyer, 27 North Vega St., Alhambra, Calif.

## MU PHI EPSILON SCHOOL OF MUSIC AT GAD'S HILL CENTER 1919 West Cullerton, Chicago, Ill.

- Director and Representative on Settlement Board of Gad's Hill*—  
 WINNIFRED R. ERICKSON, 1951 West Schiller St., Chicago 22, Ill.  
*Treasurer*—ALMA E. GRAMBAUER, *Mu Xi*; 1350 Henry St., Des Plaines, Ill.

## MUSIC IN HOSPITALS

- VIOLA M. ANDERSON (Mrs. H. O.), *Chairman*, 1038-1st St. North, Fargo, N. Dak.

## NATIONAL LIBRARIAN

- ELIZABETH MATHIAS FUQUA, 2006-7th Ave., Greeley, Colo.

## 1950 CONVENTION

- ELEANOR E. HALE WILSON (Mrs. P. R.), *Chairman*, 2800-39th West, Seattle, Wash.

## PUBLIC RELATIONS

- BERNICE K. SPRATLER, *Chairman*, 4715 Dunkirk Ave., Baltimore 29, Maryland  
*Atlantic Province*—Gertrude Otto, 120 West 70th St., New York 23, N. Y.  
*East Central Province*—Eleanor Keith Rehmann (Mrs. John C.), 3240 Terrace Drive, Des Moines, Iowa  
*Pacific Province*—Grace McAbee Bullock (Mrs. Cecil F.), 4806 Purdue St., Seattle 5, Wash.

## RITUAL

- BERTHA M. KING (Mrs. DANIEL P.), *Chairman*, MacPhail School of Music, Minneapolis, Minn.

## SCHOLARSHIPS

- HELEN CHUTE DILL, *Chairman*, 339 Reeves Drive, Beverly Hills, Calif.

## STERLING MEMORIAL FUND

- |                    |                   |
|--------------------|-------------------|
| AVA COMIN CASE     | STERLING MEMORIAL |
| HILDUR LAVINE SHAW | MEMORIAL FUND     |

## Active and Alumnae Chapters

### ATLANTIC PROVINCE

- Province Governor*—RUTH ROW CLUTCHER (Mrs. JOHN), National Second Vice President; 21 Kent Road, Upper Darby, Pennsylvania  
*Beta*—New England Conservatory of Music.....Boston, Mass.  
*President*—KAREN MORRILL, 2 Park Avenue, Somerville, Mass.  
*Mu*—Brenau College.....Gainesville, Ga.  
*President*—NANCY JONES, Brenau College, Gainesville, Ga.  
*Psi*—Bucknell University.....Lewisburg, Penn.  
*President*—ODETTE ROSE HUTCHISON, Women's College, Lewisburg, Penn.  
*Mu Upsilon*—Eastman School of Music, University of Rochester.....Rochester, N. Y.  
*President*—JUSTINE DAMON CLEARY, 424 University Ave., Rochester, N. Y.  
*Phi Gamma*—Peabody Conservatory of Music.....Baltimore, Maryland  
*President*—FLORENCE PASSEN, 907 De Soto Road, Baltimore 23, Md.  
*Phi Upsilon*—Boston University.....Boston, Mass.  
*President*—GLORIA V. MACKAY, Charlesgate Hall, 4 Charlesgate East, Boston 15, Mass.  
*Phi Psi*—Mary Washington College of the Univ. of Virginia.....Fredericksburg, Va.  
*President*—HARRIET A. WILLSON RICE (Mrs. MILLARD), Box 1442 Coll. Sta., Fredericksburg, Va.  
*Phi Omega*—Westminster College.....New Wilmington, Pa.  
*President*—SHIRLEY E. RUSSELL, 318 Ferguson Hall, New Wilmington, Pa.  
*Epsilon Beta*—Queens College.....Charlotte, N. Car.  
*President*—JEANNE WALKER, Queens College, Charlotte, N. Car.

### Boston Alumnae Chapter—

- President*—KATHERINE SHIRLEY, 11 Park Drive, Boston, Mass.

### New York Alumnae Chapter—

- President*—MARGARET SHERMAN READING (Mrs. ALFRED), 165 West 83rd St., New York 24, N. Y.

### Philadelphia Alumnae Chapter—

- President*—VELMA D. SHIPP, 1633 Spruce St., Philadelphia 3, Penn.

### Pittsburgh Alumnae Chapter—

- President*—JESSIE YUILLE YON (Mrs. CHARLES), 5075 Forbes St., Pittsburgh 13, Penn.

### Washington Alumnae Chapter—

- President*—GERTRUDE DYRE PARSONS (Mrs. HAROLD A.), 732 Whittier St., Takoma Park 12, D. C.

### Meadville Alumnae Club—

- President*—BETTY M. HOFFMAN HUMES (Mrs. HAROLD), 828 Water St., Meadville, Pa.

### Rochester Alumnae Club—

- President*—RUTH WATANABE, Eastman School of Music, Rochester 4, N. Y.

## GREAT LAKES PROVINCE

- Province Governor*—MILDRED MARTIN CHRISTIAN (Mrs. HENRY C.), National First Vice-President; 1568 Lauderdale Ave., Lakewood 7, Ohio

- Gamma*—University of Michigan.....Ann Arbor, Mich.  
*President*—PATRICIA BAUMGARTEN, 1205 Hill St., Ann Arbor, Mich.

- Epsilon*—Toledo Conservatory of Music.....Toledo, Ohio  
*President*—JANET MARGARET RANKIN, Box No. 310, R. No. 2, West Central Ave., Toledo 6, Ohio

- Iota Alpha*—Chicago Musical College.....Chicago, Ill.  
*President*—ROSEMARY L. RUSHFORD, 6015 West Melrose, Chicago 34, Ill.

- Sigma*—Northwestern University.....Evanston, Ill.  
*President*—JENNIE MAE SLATER, Delta Zeta House, Evanston, Ill.

- Phi*—Mt. Union College.....Alliance, Ohio  
*President*—Margaret A. Meacham, Elliott Hall, Alliance, Ohio

- Mu Xi*—American Conservatory of Music.....Chicago, Ill.  
*President*—FRANCES R. PHELPS, 1018 Forest Ave., River Forest, Ill.

- Mu Pi*—Ohio Wesleyan University.....Delaware, Ohio  
*President*—BARBARA ALICE WENGER, Monnett Hall, Delaware, Ohio

- Mu Phi*—Baldwin-Wallace College.....Berea, Ohio  
*President*—JEAN ANN STEINMAN, Merner-Pfeiffer Hall, Berea, Ohio

- Phi Kappa*—Wayne University.....Detroit, Mich.  
*President*—PATRICIA D. PROUSE, 16230 Griggs (210) Detroit, Mich.

- Phi Omicron*—Western Reserve University.....Cleveland, Ohio  
*President*—M. LOUISE ZIMMERMAN, 3317 Tullamore Rd., Cleveland Heights, Ohio

- Phi Sigma*—DePaul University.....Chicago, Ill.  
*President*—NANCY LEE DAVIS, 4219 Northcote Ave., East Chicago, Ind.

- Ann Arbor Alumnae Chapter*—  
*President*—FRANCES MIKE THROOP (Mrs. PALMER), 619 East University Ave., Ann Arbor, Mich.

- Chicago Alumnae Chapter*—  
*President*—CAROLYN H. STUBBS WOODEN (Mrs. JOHN C.), 700 Hinman Ave., Evanston, Ill.

- Cleveland Alumnae Chapter*—  
*President*—THELMA MERNER GOLDSWORD (Mrs. NORMAN), 3400 Hollister Road, Cleveland

- Detroit Alumnae Chapter*—  
*President*—MARION S. JEWELL (Mrs. LOYD V.), 18547 Magnolia Dr., Detroit 19, Mich.

- Evanston-North Shore Alumnae Chapter*—  
*President*—ELIZABETH AYRES KIDD (Mrs. A. E., Jr.), R. 1, Box 338-B, Glen Oak Acres, Glen View, Ill.

- Toledo Alumnae Chapter*—  
*President*—ETHEL SLAYTON THURSTON (Mrs. NORMAN T.), 2058 Glenwood Ave., Toledo 2, Ohio

- Lansing-East Lansing Alumnae Club*—  
*President*—BEULAH RAEBUCK CROSS (Mrs. FRED H.), 1707 West Ottawa, Lansing, Mich.

- Madison Alumnae Club*—  
*President*—JEANNE B. ELDRIDGE, 209 Kedzie Street, Madison, Wis.

- Milwaukee Alumnae Club*—  
*President*—RUTH LEE, 4233 North Ardmore Ave., Milwaukee 11, Wisc.

## EAST CENTRAL PROVINCE

- Province Governor*—ORAH ASHLEY LAMKE (Mrs. GEORGE W.), National Editor; 1327 McCutcheon Rd., Richmond Heights 17, Missouri

- Zeta*—DePauw University.....Greencastle, Ind.  
*President*—KATHLEEN MAIN, Lucy Rowland Hall, Greencastle, Ind.

- Theta*—Kroeger School of Music.....St. Louis, Mo.  
*President*—ELIZABETH D. BAKER BUCK (Mrs. W. EARL, Jr.), 7028 Kingsbury Blvd., St. Louis 5, Mo.

- Kappa*—Arthur Jordan School of Music.....Indianapolis, Ind.  
*President*—EVELYN RUTH PIEL, R.F.D. No. 9, Box 321, Indianapolis 44, Ind.

- Upsilon*—Cincinnati Conservatory of Music.....Cincinnati, Ohio  
*President*—MARY ELLEN MERRICK, Highland and Oak St., Cincinnati, Ohio



- Omega*—Drake University.....Des Moines, Iowa  
*President*—HELEN GLORIA MELAAS, 1518 Washington, Des Moines, Iowa
- Mu Alpha*—Simpson College.....Indianola, Iowa  
*President*—ROBERTA LEE STARRY, 406 No. Buxton, Indianola, Iowa
- Mu Epsilon*—MacPhail School of Music.....Minneapolis, Minn.  
*President*—THELMA LARSON JOHNSON (MRS. C. G.), 2611 Inglewood Ave., Minneapolis, Minn.
- Mu Omicron*—College of Music.....Cincinnati, Ohio  
*President*—MYRTLE JEAN WHITEHEAD, 1227 Elm St., Cincinnati 10, Ohio
- Mu Psi*—Coe College.....Cedar Rapids, Iowa  
*President*—JEAN BENNER BUCK (MRS. MERLE), No. 1 Marquis Court, Cedar Rapids, Iowa
- Phi Theta*—Lindenwood College.....St. Charles, Mo.  
*President*—KATHERINE LOUISE PEMBERTON, Lindenwood College, St. Charles, Mo.
- Phi Rho*—Minneapolis College of Music.....Minneapolis, Minn.  
*President*—JEAN MARJORIE HEILSTAD, 3418 Blaisdell, Minneapolis 8, Minn.
- Epsilon Alpha*—The College of St. Catherine.....St. Paul, Minn.  
*President*—HELEN LOUISE BOENING, The Coll. of St. Catherine, St. Paul, Minn.
- Epsilon Gamma*—Belhaven College.....Jackson, Miss.  
*President*—SUE RANDOLPH STOCKETT, Belhaven College, Jackson, Miss.
- Cincinnati Alumnae Chapter*—  
*President*—ALMA MASSMAN GEISER (MRS. CHARLES E.), 5719 Hamilton Ave., Cincinnati 24, Ohio
- Des Moines Alumnae Chapter*—  
*President*—PEARL SORENSON GROTH (MRS. ALTON O.), 3909 Waveland Drive, Des Moines, Iowa
- Indianapolis Alumnae Chapter*—  
*President*—LUCILLE SHIELDS HOSS (MRS. HENRY G.), 4801 Park Ave., Indianapolis 5, Ind.
- Minneapolis Alumnae Chapter*—  
*President*—JENNE NELSON WESTLING (MRS. A. E.), 5320 1st Ave. South, Minneapolis 9, Minn.
- St. Louis Alumnae Chapter*—  
*President*—MILDRED ADAMS HUSSONG (MRS. D. E.), 339 No. Central Ave., Clayton 5, Missouri
- St. Paul Alumnae Chapter*—  
*President*—HARRIET G. ALLEN, 1855 Ashland Ave., St. Paul 5, Minn.
- Cedar Rapids Alumnae Club*—  
*President*—ELEANOR HOUTS, 1808 Washington Ave., S.E., Cedar Rapids, Iowa
- Evansville Alumnae Club*—  
*President*—LOUISE L. WELLS RICHARDSON (MRS. W. FRANK), 1023 E. Mulberry St., Evansville 13, Ind.

#### WEST CENTRAL PROVINCE

- Province Governor*—HILDUR LAVINE SHAW (MRS. W. S.), National Third Vice-President; 1319 Ninth St. So., Fargo, North Dakota
- Xi*—University of Kansas.....Lawrence, Kansas  
*President*—HARRIET ANN HARLOW, 1001 West Hills, Lawrence, Kansas
- Mu Gamma*—University of Nebraska.....Lincoln, Nebraska  
*President*—VIRGINIA ANN LANGE, 1529 South 9th, Lincoln 2, Nebraska
- Mu Delta*—Kansas City Conservatory of Music.....Kansas City, Mo.  
*President*—MARLYS ANN WATTERS, 231 East 46th St., Kansas City, Mo.
- Mu Theta Epsilon*—University of Texas.....Austin, Texas  
*President*—LAURA LEE GREEN, 2601 University Ave., Austin, Texas
- Mu Kappa*—University of Oklahoma.....Norman, Okla.  
*President*—CATHERINE LOUISE STEWART, 925 Chautauqua, Norman, Okla.
- Mu Mu*—Kansas State College.....Manhattan, Kans.  
*President*—JERRY LOU GATZ, 1834 Laramie, Manhattan, Kansas
- Mu Tau*—University of South Dakota.....Vermillion, So. Dak.  
*President*—ADELE ELIZABETH CLARK, R. No. 2, Vermillion, So. Dakota
- Mu Chi*—Southern Methodist University.....Dallas, Texas  
*President*—MARY JEANNE BROOKS, 3637 Asbury, Dallas, Texas
- Phi Epsilon*—College of Emporia.....Emporia, Kansas  
*President*—MARGARET JEAN KERAUS, Dunlap Hall, College of Emporia, Emporia, Kansas
- Phi Zeta*—Morningside College.....Sioux City, Iowa  
*President*—ELIZABETH ANN BECKMANN, 3313 Vine Ave., Sioux City, Iowa
- Phi Iota*—Concordia College.....Moorhead, Minn.  
*President*—GERTRUDE SZAROLETA, Concordia College, Moorhead, Minn.
- Phi Xi*—Baylor University.....Waco, Texas  
*President*—ERA JO UPSHAW, Burleson Hall, Waco, Texas
- Phi Pi*—University of Wichita.....Wichita, Kansas  
*President*—BEVERLY BEE COLDSNOW, 4332 E. Lewis, Wichita, Kansas
- Phi Tau*—North Texas State Teachers College.....Denton, Texas  
*President*—RUTH REAVLEY, Box 5663 T. C. Station, Denton, Texas
- Phi Phi*—University of Kansas City.....Kansas City, Mo.  
*President*—BETTY HIGHLEY REUBART (MRS. DALE), 4049 Campbell, Kansas City, Mo.
- Epsilon Epsilon*—Texas Christian University.....Fort Worth, Texas  
*President*—JEAN HILL, Waits Hall, Box 185, T.C.U., Fort Worth, Texas

- Epsilon Zeta*—Hendrix College.....Conway, Arkansas  
*President*—MARY MARGARET HOLMES, Hendrix College, Conway, Arkansas
- Denver Alumnae Chapter*—  
*President*—ETHEL TOBUREN WARD (MRS. C. P.), 1427 Humboldt, Denver, Colorado
- Kansas City Alumnae Chapter*—  
*President*—ADA BELLE FILES SPENCER (MRS. JOHN GALEN), Summerlea Gardens, Bethel, Kansas
- Lincoln Alumnae Chapter*—  
*President*—FRANCES J. BOLTON HALLETT (MRS. E. SHELDEN), 3434 South 28th, Lincoln, Nebraska
- Oklahoma City Alumnae Chapter*—  
*President*—GLADYS SPANGLER JOHNSTON (MRS. DAVID C.), 2817 N. W. 19th St., Oklahoma City, Oklahoma
- Wichita Alumnae Chapter*—  
*President*—CAROL SCHOWALTER HOLMAN (MRS. ELTON), 1845 No. Lorraine, Wichita 6, Kansas
- Dallas Alumnae Club*—  
*President*—RUTH HOGG VICK (MRS. WILLIAM PLOWDEN, III), 5339 Drane Drive, Dallas 9, Texas
- Houston Alumnae Club*—  
*President*—HELEN PORTER LAPAT (MRS. WILLIAM), 2301 Maroneal Blvd., Houston, Texas
- Tulsa Alumnae Club*—  
*President*—ELIZABETH HAMANN GRIFFITH (MRS. E. F.), 2720 East 51st St., Tulsa, Oklahoma

#### PACIFIC PROVINCE

- Province Governor*—MARGARETTE WIBLE WALKER, National President; Dean of Women, Texas Technological College, Lubbock, Texas
- Nu*—University of Oregon.....Eugene, Oregon  
*President*—MARY MARGARET DUNDORE, 1021 Hilyard, Eugene, Oregon
- Tau*—University of Washington.....Seattle, Wash.  
*President*—MARIAN ADAMS, 1866 Shelby St., Seattle 2, Wash.
- Mu Beta*—Washington State College.....Pullman, Wash.  
*President*—HELEN DUNCAN, Davis Hall, Pullman, Wash.
- Mu Zeta*—Whitman College.....Walla Walla, Wash.  
*President*—MERILYN GRACE PRATT, Prentiss Hall, Walla Walla, Wash.
- Mu Eta*—College of the Pacific.....Stockton, Calif.  
*President*—BEVERLY FAYE CAMPBELL, South Hall C.O.P., Stockton, Calif.
- Mu Nu*—University of Southern California.....Los Angeles, Calif.  
*President*—BARBARA RUTH DUPUY, 725 West 32d, Los Angeles 7, Calif.
- Phi Lambda*—Willamette University.....Salem, Oregon  
*President*—JOY L. BUSHNELL, Delta Gamma House, Salem, Ore.
- Phi Mu*—San Jose State College.....San Jose, Calif.  
*President*—PRISCILLA ANN PHILLIPS, 470 So. Tenth St., San Jose, Calif.
- Phi Nu*—University of California at Los Angeles.....Los Angeles, Calif.  
*President*—ELLEN HOLLAND HALOPOFF (MRS. WM.), Apt. 109, 2810 Leeward Ave., Los Angeles, Calif.
- Phi Chi*—Fresno State College.....Fresno, Calif.  
*President*—LILLIAN ELINOR HARMON, 1742 So. Cedar, Fresno, Calif.
- Epsilon Delta*—Lewis and Clark College.....Portland, Oregon  
*President*—ABIGAIL TRASK, Lewis and Clark College, Portland 1, Oregon
- Epsilon Eta*—George Pepperdine College.....Los Angeles, Calif.  
*President*—MAXINE BANTON, 1121 West 79th St., Los Angeles 44, Calif.
- Beverly Hills Alumnae Chapter*—  
*President*—ELOISE M. JONES SMITH (MRS. GLEE C.), 850 So. Shenandoah, Los Angeles, Calif.
- Los Angeles Alumnae Chapter*—  
*President*—ALIENE CHERRY REED (MRS. WM. K.), 67 Las Flores Ave., Arcadia, Calif.
- Portland Alumnae Chapter*—  
*President*—MARJORY KATHLEEN HEERMANS, 2157 N. W. Lovejoy, Portland 10, Ore.
- San Francisco Alumnae Chapter*—  
*President*—SYMETA ZIMMERMAN KUPER (MRS. NATHAN), 1441 Bonita, Berkeley 8, Calif.
- Seattle Alumnae Chapter*—  
*President*—RUTH P. HENLEY FROST (MRS. R. F.), Box 95-c, Route 2, Renton, Wash.
- Eugene Alumnae Club*—  
*President*—KATHERYN H. ORME ASEY (MRS. FRANK), 541 East 19th, Eugene, Oregon
- San Diego Alumnae Club*—  
*President*—VETA ROGERS RIEGEL, 3632 Kenyon St., San Diego 10, Calif.
- San Joaquin Alumnae Club*—  
*President*—MARIAN A. WICHERT LONG (MRS. CLAYTON), Box No. 1216, Oakdale, Calif.
- San Jose Alumnae Club*—  
*President*—BARBARA STANDRING, 170 So. 11th, San Jose, Calif.
- Spokane Alumnae Club*—  
*President*—MARIE M. LARSON RODKEY (MRS. JOHN P.), W. 1014 Knox, Spokane 12, Wash.
- Tacoma Alumnae Club*—  
*President*—SARAH E. HANBY GORDON (MRS. RALPH C.), 9664 Bridgeport Way S.W., Tacoma, Wash.
- Walla Walla Alumnae Club*—  
*President*—IVADELL TUESLEY YOUNG (MRS. JOHN O.), R. No. 2, Box 433-A, Walla Walla, Wash.





# INITIATES - ACTIVE ALUMNAE

*Order Your Pin From Your Official Jeweler*

The L. G. Balfour Company, your official jeweler, guarantees the protection of your insignia—each piece is die struck to insure accurate design and uniform weight. It is then painstakingly finished by master jewelry craftsmen in exact accordance with your official contract specifications. All orders are handled in accordance with your fraternity regulations.

**HOW TO ORDER:** All orders for insignia must be placed with the Mu Phi Epsilon National office, with the Secretary-Treasurer.

### INSIGNIA PRICE LIST BADGES

Plain Bevel Border.....	\$ 5.00
Crown Set Pearl.....	14.00
Crown Set Pearl, 3 Diamonds...	54.00
Recognition Pin 10K.....	1.75
Pledge Pin, Sterling.....	0.75

### GUARD PINS

	Single Letter	Double Letter
Plain Gold.....	\$ 2.25	\$ 3.50
Close Set Pearl.....	4.50	7.25
Crown Set Pearl.....	6.50	11.50

Taxes: Add 20% Federal Tax and any prevailing State Tax to prices quoted.

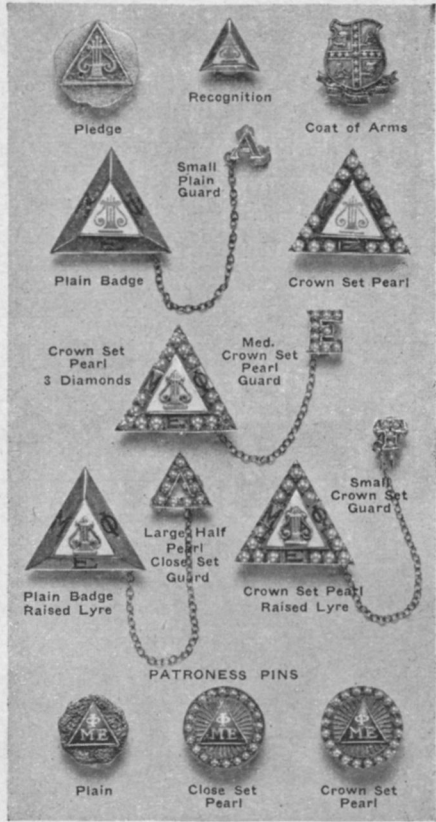
### 1949 BALFOUR BLUE BOOK

Beautiful fraternity jewelry including gold and silver rings, charm bracelets, Ronson lighters, sultan billfolds, and party favors.

*Write for FREE COPY\**  
*\*Mailed in USA only*

*Sole Official Jeweler to Mu Phi Epsilon*

**L. G. BALFOUR COMPANY**  
**FACTORIES AT ATTLEBORO MASSACHUSETTS**



### ADDITIONAL BALFOUR FRIENDLY SERVICES

Representatives call to make regular displays at chapter houses. Balfour stores are located in educational centers for your prompt service. Stationery, placecards, invitations and programs are available as an added service to your chapter. Send for samples.



# CALENDAR

1948-49

September—*President* calls meeting of chapter officers to make plans for the year.

*Corresponding Secretary* reports any changes in names and addresses of chapter officers to NEO (National Executive Office, 6604 Maplewood Ave., Sylvania, Ohio) and orders supplies for the year (from NEO) enclosing check and remittance blank secured from *Treasurer*.

September 10—*Historian*: All material for inclusion in November TRIANGLE must be in the Office of the National Editor, Orah Ashley Lamke (Mrs. G. W.), 1327 McCutcheon Rd., Apt. F, Richmond Heights 17, Mo.

October 15—*Treasurer* and *Corresponding Secretary* prepare and send to NEO, fall membership lists (on official forms) and check with remittance blank to cover fall per capita taxes (\$.75 per member), and Convention taxes (\$1.25 per member—for Alumnae chapters only), and TRIANGLE subscriptions for annual subscribers (\$1.00 per year).

November 13—Founders' Day. Forty-fifth Anniversary.

*Treasurer* sends with remittance blank to NEO, check with remittance blank for Founders' Day Fund voluntary contribution of 45 pennies per member.

November 15—*Historian*: Deadline for material for January TRIANGLE. *Omit newsletter*.

December 1—*President* writes fall report letter to National Third Vice President, Hildur L. Shaw, 1319 9th St. So., Fargo, No. Dak.

January 10—*Historian's* required newsletter due at Office of National Editor; Deadline for all material for March TRIANGLE.

February 1—Contestants, Musicological Research Contest: send notice of your intention to enter contest to *National Third Vice President*, Hildur L. Shaw (for address, see above, Dec. 1).

March 10—*Historian*: Deadline for material for May TRIANGLE. *Omit newsletter*.

March 15—*Treasurer* and *Corresponding Secretary* prepare and send to NEO, spring membership lists (on official forms), and check with remittance blank to cover spring per capita taxes (\$.75 per member), and Convention taxes (\$1.25 per member—for Alumnae Chapters only).

April 1—Manuscripts for Musicological Research Contest due at Office of National Third Vice President, Hildur L. Shaw (for address, see above, Dec. 1). *President* writes spring report-letter to National Third Vice President.

June 1—*President*, *Treasurer*, and *Corresponding Secretary* send annual reports to NEO (on official forms).





*he*

*Mu Phi Epsilon  
Creed*

*I believe in Music, the noblest of all the arts, a source of much that is good, just, and beautiful; in Friendship, marked by love, kindness, and sincerity; and in Harmony, the essence of a true and happy life. I believe in the sacred bond of Sisterhood, loyal, generous, and self-sacrificing, and its strength shall ever guide me in the path that leads upward toward the stars.*

—RUTH JANE KIRBY, *Omega*