

V. 45 #4

# The Triangle



of Mu Phi Epsilon  
May, 1951



# ... The • Active • Chapters

## CALENDAR

1950-1951

**First Week of School:** *President* calls meeting of chapter officers to inspect chapter equipment, discuss fall materials received from NEO (National Executive Office), 6604 Maplewood Avenue, Sylvania, Ohio, and make plans for the year.

*Corresponding Secretary* reports any changes in name and address of chapter officers to NEO and orders supplies for the year (from NEO), enclosing check and remittance blank secured from *Treasurer*.

**September 10—Historian:** All material for inclusion in November TRIANGLE must be in the Office of National Editor, Grayce Kent Clark (Mrs. Roy L.), 1616-46th St., Des Moines, Iowa.

**November 13—Founders' Day.** Forty-Seventh Anniversary.

*Treasurer* sends with remittance blank to NEO, check for Founders' Day Fund voluntary contribution of 47 pennies per member.

**November 15—Treasurer and Corresponding Secretary** prepare and send to NEO, fall membership lists (on official forms) and check with remittance blank to cover fall per capita taxes (\$1.50 per member) and Convention taxes (\$1.25 per member), and TRIANGLE subscriptions for annual subscribers (\$1.00 per year).

*Historian's* required fall newsletter due at Office of National Editor; deadline for material for January TRIANGLE.

**December 15—President** writes fall report-letter to your Province Governor concerning chapter activities and problems.

**January 10—Historian:** Deadline for material for March TRIANGLE.

**February 1—Contestants, Musicological Research Contest:** send notice of your intention to enter contest to Berniece E. Wallis (Mrs. Harold E.), 2126 Shelby St., Seattle 2, Wash.

**March 10—Historian:** Deadline for required spring newsletter and other material for May TRIANGLE.

**Last Week of First Semester:** *President* appoints Nominating Committee for new Chapter officers.

**March 15—Manuscripts for Musicological Research Contest** due at Office of Berniece E. Wallis (Mrs. Harold E.), 2126 Shelby St., Seattle 2, Wash.

**First Month of Second Semester—President** calls meeting of chapter for the election of new officers, who will be installed in office during the second month of the second semester.

*Corresponding Secretary* reports the names and addresses of new chapter officers (on official forms) to NEO.

**April 15—Treasurer and Corresponding Secretary** prepare and send to NEO, spring membership lists (on official forms) and check, with remittance blank to cover spring per capita taxes (\$1.50 per member), and Convention taxes (\$1.25 per member).

*President* writes spring report-letter to your Province Governor.

**June 1—President, Treasurer and Corresponding Secretary** send annual reports to NEO (on official forms).

**June 1—Manuscripts for Original Composition Contest** due at office of National Second Vice-President, Elva B. McMullen Gamble (Mrs. Eugene E.), 9333 So. Hamilton Ave., Chicago 20, Ill.

# THE TRIANGLE OF MU PHI EPSILON



## CONTENTS for MAY, 1951

	Page
Our President's Message.....	2
San Jose Alumnae Club Becomes Chapter.....	3
Presenting the Winners—1950 Original Composition Contest.....	4
Judges for 1951 Original Composition Contest.....	6
Historic Gems of the Father-Founder.....	8
The Old Timers' Orchestra.....	10
Lure of Laguna Beach.....	12
In the News.....	13
Pat Merriam Writes Tuneful History.....	14
Pride of Mu Phi Epsilon.....	15
Triangle Tidbits .....	16
In the News.....	17
A Patroness' Golden Key to Lighten the Hours.....	19
Historians Reporting .....	20
Mu Phi Epsilon Directory.....	41

*Grayce Kent Clark, Editor*

THE TRIANGLE of Mu Phi Epsilon is published four times yearly, the first of November, January, March and May, at 2642 University Ave., Saint Paul, Minnesota, by Leland Publishers, Incorporated (The Fraternity Press) for Mu Phi Epsilon, National Music Sorority. The subscription price is \$1.00 per year. Deadlines for copy: Materials for publication must reach the Editor, 1616 46th St., Des Moines, Ia., before the tenth of September, January, March and the fifteenth of November. Entered as second class matter at the postoffice at Saint Paul, Minnesota, under the act of March 5, 1879.

VOLUME 45

NUMBER 4







Ruth Row Clutcher, National President

## Our President's Message

△ As one of the organization members of the National Music Council, Mu Phi Epsilon has formally offered its services to the government of the United States to assist with all facilities possible in bringing comfort and stimulation that music can give to our armed forces and communities during the period of national emergency. A copy of the resolution as passed by the National Music Council has been sent to the President of the United States and to government and military officials.

Let us emphasize anew, therefore, the importance of our Music in Hospitals Fund as well as the services our chapters are able to contribute directly on a local level. Music is needed more than ever during a period of national emergency.

RUTH ROW CLUTCHER, National President

## San Jose

### ALUMNAE CLUB INSTALLED

△ THE San Jose Alumnae Chapter of Mu Phi Epsilon was installed at a candlelight ceremony followed by a musical and tea at 2:45 P.M. on February 18, 1951, at the home of Rosalie Speciale. Thirty-six members were present.

Pearl Johnson (past National Editor) was the installing officer. The following officers were installed: Mildred McKee, Pres.; Edith Egan,

Vice Pres.; Arleen Cox, Corr. Sec.; Evabelle Fuller, Recording Sec.; Marjorie Sherman, Treas.; Erma-Louise Johnson, Historian; Betty Jean Merritt, Chaplain; Rosalie Speciale, Warden; Ann McClelland, Chorister.

After the ceremonies of installation a beautiful musical program was presented.

(CONTINUED ON PAGE 48)

*Officers of the San Jose Alumnae Chapter, Left to right: (first row) Rosalie Speciale, Warden; Edith Egan, Vice President. Second row: Arlene Cox, corresponding secretary; Mildred McKee, President; Pearl Johnson, Installing Officer; Evabelle Fuller, Recreational Secretary. Third row: Ann McClelland, Chorister; Betty Jean Merritt, Chaplain; Erma Johnson, Historian; Marjorie Sherman, Treasurer.*





# PRESENTING THE WINNERS

## 1950 Original Composition Contest

BY ELVA McMULLEN GAMBLE  
National Second Vice President

△ BLYTHE OWEN, whose "Sonata for Violin and Piano" won first prize in Division I, was initiated into Mu Xi Chapter in 1934, and is now a member of the Chicago Alumnae Chapter. Her compositions have won prizes in many competitions including our own contests in 1942, the Delta Omicron National Award in 1944, Henry J. Lytton Award in 1946 and the Lakeview Musical Society Award in 1949. Blythe has studied at the Chicago Musical College, Northwestern University, Eastman School of Music, and spent the summer of 1949 in Fontainebleau, France, taking further piano work with Robert Casadesus

Ruth S. Wylie

and composition with Nadia Boulanger and Jean Batalla. At present she is teaching at the Cosmopolitan School of Music in Chicago. Blythe also won Honorable Mention in this Division for her American Symphony.

In Division II no prizes were awarded in Classes A and B and in Class C Honorable Mentions were given to "Love's Philosophy" by Vivian Loretta Alvstad, Mu Chi Chapter, and "Fantasia" for piano by Elizabeth Beckman, Phi Zeta Chapter.

Ruth S. Wylie, who is an assistant professor of Composition and Theory

(CONTINUED ON PAGE 18)

Blythe Owen



THE MAY 1951 TRIANGLE OF MU PHI EPSILON

# 1950

## PRIZE WINNERS

### Mu Phi Epsilon Original Composition Contest

#### DIVISION I (Former first prize winners)

First Prize: Sonata for Violin and Piano

Blythe Owen (Chicago Alum. Chapter)  
151 S. Schiller Street  
Chicago, Illinois

Honorable Mention: American Symphony  
Blythe Owen

#### DIVISION II (undergraduate)

CLASSES A AND B: (No Prizes awarded)

CLASS C:

Honorable Mention: "Love's Philosophy" song  
Vivian Loretta Alvstad, Mu Chi  
Heimdal, North Dakota  
"Fantasia" piano  
Elizabeth Beckman, Phi Zeta  
3312 Vine  
Sioux City, Iowa

#### DIVISION III (graduate)

CLASS B:

First Prize: "String Quartet No. 2"

Ruth S. Wylie (unaffiliated)  
5738 Kensington Road  
Detroit 24, Michigan

Honorable Mention: "Theme and Variations"  
Katharine Mulky (Xi)  
1310 Louisiana  
Lawrence, Kansas

CLASS C:

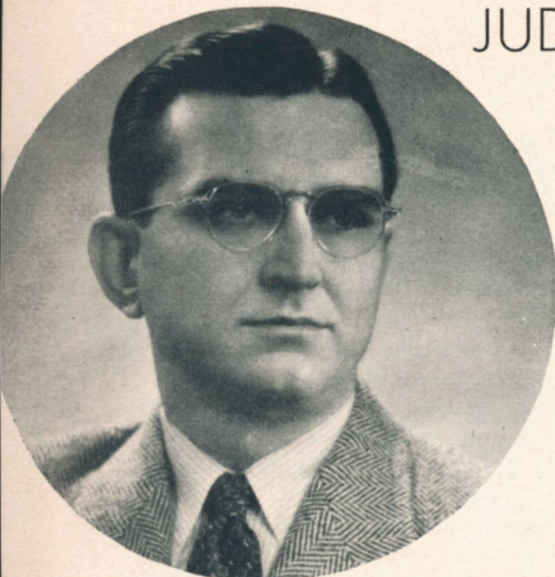
First Prize: "Thoughtful Piece"  
(clarinet and piano)

Ruth S. Wylie

Honorable Mention: "A Noel" (choral number)  
Minabel Hunt (Los Angeles Alumnae)  
119 N. Hobart  
Los Angeles, California

THE MAY 1951 TRIANGLE OF MU PHI EPSILON





Anthony Donato

## JUDGES FOR '51

# Original Composition Contest

State Teachers College and the University of Texas and at present is Professor of composition and orchestration at Northwestern University and conductor of the University Chamber Orchestra. His compositions include orchestral numbers, chamber music, songs, solo works for piano, violin, horn and other instruments and choral numbers. His "Sonata for Horn and Piano" was commissioned by the National Association of Schools of Music and was performed at their convention in Cincinnati in November 1950.

△ △ △

△ IRWIN FISCHER was born at Iowa City in 1903 and received his early musical education in Chicago. He continued his studies in Paris, Budapest and at Salzburg. At present he is the organist of the Chicago Symphony Orchestra and of Ninth Church of Christ, Scientist, Chicago; and conductor of the American Conservatory Orchestra and the South Side Symphony Orchestra of Chicago. His orchestral compositions have been given frequent performances in not only his home city, but also in New York and Washington, D. C. He has appeared as solo-

ist in his Piano Concerto with the Chicago Symphony, Civic Orchestra and Mutual network.

△ △ △

△ ALEXANDER TCHEREPNIN was born in 1899 and received his early training in Russia from his father, Nicolai Tcherepnin, an outstanding composer and conductor at the Imperial Opera House. He studied composition and piano at the Paris Conservatory and while in Paris wrote his first ballet which was commissioned by Anna Pavlova. Over 130 of his compositions are published by 20 publishers and include operas, ballets, orchestral, chamber and piano works. His symphonic works have been performed by most of the leading conductors both here and abroad. In 1949 he joined the faculty of De Paul University in Chicago and is now completing a new symphonic work to be given its world premiere in this country.

Alexander Tcherepnin



Irwin Fischer

△ It is a pleasure to announce the names of the three outstanding composers who have consented to act as judges for our 1951 Original Composition Contest. They are all busy with their own creative work, but are eager to stimulate interest in American music, and to encourage the young composers. For the first time all three judges are living in the same area and will not only examine the compositions individually but will meet as a board to discuss their final choices. We are most grateful to them for their willingness to assist Mu Phi Epsilon in this project.—ELVA McMULLEN GAMBLE, *National Second Vice President.*

△ △ △

△ ANTHONY DONATO was born in Prague, Nebraska, in 1909, and received his musical education at the Eastman School of Music. He has served as head of the violin department at Drake University, Iowa

## Marriages

Epsilon—

Dorothy Diller Neubrecht to Clifford Muradith—Febr. 10, 1951

Epsilon Iota—

Georgiana Wallace to Wallace Plowman—Febr. 16, 1951

Mu Epsilon—

Mary Anne Simard to Robert Story—Sept. 4, 1950

Marjorie Winney to Robert Berlin  
Barbara Kinney to Gerald Ludvigson—  
March 11, 1950

Mary Ellen Sturtevant to William Jenkins—Sept. 2, 1950

Margaret Stableski to Joseph St. George—  
May 11, 1950

Gloria Burkhart to James Cooper—Apr. 19, 1950

## Correction

BETA—Emelia M. Anderson  
to Samuel J. Ade—  
September 2, 1948—not 1949





Founder's Daughter

△ BARBARA STERLING REMINGTON, daughter of our beloved founder, Dr. W. S. Sterling, has graciously consented to write for us some interesting glimpses into the life of "the Father-Founder" as she so affectionately terms him.

She writes, "before I take up my main subject, I should like to recall what little I can of the co-founder, Elizabeth Mathias Fuqua. I remember her so pleasantly as my first piano teacher in father's college. I can remember that pleasant confusion of musical sounds so characteristic of a music school, as I ascended the massively balustraded stairs to her sunny spacious room for my lesson. She wore the current Gibson Girl long flared skirt, and a white embroidered blouse, the high neck being supported with whale bone. We all affectionately called her 'Thais,' and the last time father saw her at a convention, he wrote that she was 'the same dear Thais as ever.'

## Historic Gems of the Father-Founder

"I've been delving into old letters from the parents, looking for references to Mu Phi Epsilon. You see, I haven't had the privilege of living with them, except for visits, since I was nineteen, so we've had to depend largely upon correspondence for family intercourse.

"I shall discuss the parents together, for the moment, and from the standpoint of character, first. They were noted for their mutual devotion which, however, instead of separating them from other people, seemed to enlarge their capacity for friendship towards others. They seemed incapable of malice or jealousy, and I have never heard one unkind word between them. It is amazing how many people have found them saintly, lovable, idealistic and endowed with fine minds and considerable personal charm. They were interested not in apparent values but in actual ones; not in how much they could get, but in how much they could give. They were contributing to fifteen different charities besides rendering personal aid, financial and otherwise, to innumerable individuals, most of whom were down and out, often finding jobs for them and rehabilitating them.

"In addition, they were 'up to their ears' in churchwork—which

brings me to the question: what was back of all this; what was their motive? Well, we all know, when we stop to think of it, that to get a correct perspective on the values of life, we must get a bird's-eye-view of them. It was this view which was the governing factor of their lives and they achieved this by living close to Him. It is an attitude of mind. Indeed, this, I think, is the true Mu Phi Epsilon meaning of 'Harmony.'

"As they grew into middle life and failing strength they tended, even as the great Bach, to withdraw more and more from social life, but their friends seemed to understand the situation and their friendships remained permanent. They had perhaps given too generously of themselves, and their pocketbooks, that is, viewed from a worldly standpoint, so that there were a few trying years, until the Sisters of the Transfiguration, to whom my father especially had rendered a variety of services, invited them to live on their beautiful grounds.

"The Episcopal Sisters of St. Helena have had them as guests and my brother and two sisters have contributed regularly to their expenses. My sister, Louise, was a help and comfort when the three lived together in Miami, Florida.

"In conclusion, I might quote those comments about them which come to mind. Speaking of my mother, Bishop Matthews once said that she was 'spiritually powerful,' and of the 'Father-Founder,' Dr. Gavin, another great churchman, said that he was 'the greatest saint he'd ever known.'

"My husband said that 'a great spiritual power radiated from them, affecting some lives far removed

from theirs,' and his mother said that my mother was 'charmingly individual,' and that father was 'the most precious person she had ever met.'

"This transcendent quality showed itself in their music. I can still hear the bubbling, soaring quality in my mother's voice as she sang scraps from Gilbert and Sullivan or other songs, and father's playing had what my husband called, 'that rare quality—spiritual exaltation!' One of the old reviews of one of father's organ recitals said that 'his soul seemed to mingle with the instrument.'"

Mrs. Remington jokingly adds, "When we are born into an environment we're bound to absorb some of it, but we may have to reach an advanced age before we can appraise its values. I think I've about reached that age, and at the rate I'm going, I calculate that the benefits of my early environment will have worked their way to the surface of what I call my character."

We deeply appreciate Barbara Sterling Remington's willingness to write these historic gems for us, because they will enrich our store of knowledge of our Father-Founder, Dr. W. S. Sterling.

△ △ △

## The Eternal Triangle

DONNA MAE KRUSEL, president of Sigma chapter, has written an original skit, "The Eternal Triangle," a fairy tale of how Mu Phi Epsilon might have originated. This is available to all Mu Phi Epsilon chapters to be performed at a rush party. We appreciate Donna's generosity in inviting all of the chapters to write to her for the skit, if they wish.





Frieder Weissmann, internationally famous orchestra conductor (Old Timers' Orchestra)

## The Old Timers' Orchestra

phony orchestra composed of old musicians who had had a glorious career. At first I thought this was not practical and felt that even the name "Old Timers' Orchestra" was of no interest. In fact, who cares about old artists? And what would be the principal purpose of such an organization when there are so many symphony orchestras scattered throughout the country? However, Mr. Goutkin had the right answer for all questions and, after discovering that real artists never refuse to make good music wherever there is an opportunity, he succeeded in forming the orchestra. He encountered a great number of extreme difficulties, but his faith in final success inspired him always to overcome these until good luck turned in his favor.

The best luck was when a member of the orchestra invited Dr. Frieder Weissmann to hold one rehearsal just for the purpose of making some good music. The result of that rehearsal was most interesting for both the Old Timers and the Conductor, as the most perfect understanding was immediately established and with enthusiastic mutual consent, Dr. Weissmann was requested to be the permanent conductor of the "Old Timers' Orchestra." After a few rehearsals, the orchestra under his in-

spiring direction reached such a high degree of artistic perfection that it surprised the most skeptical. Even the Administration of Local 802 American Federation of Musicians began to look upon the Old Timers' Orchestra with sympathetic eyes and worked out the idea of presenting it to the public of New York. On the evening of August 13, 1949, the first concert sponsored by Local 802, AF of M, and conducted by Dr. Weissmann was presented at the Music Grove in Brooklyn's Prospect Park and attended by over four thousand people who enjoyed it beyond description judging by the enthusiastic and spontaneously prolonged applause. Also the principal daily newspapers of New York City reported the event most favorably and an editorial in the New York *Herald-Tribune* of August 16, 1949, ended with these words: "All in all, the Orchestra promises to be quite an addition to our musical life. It may even put the child prodigies out of business. Go to it, Old Timers!"

Since that memorable event many other concerts have been presented to the public in various places, including The Mall in Central Park and the Metropolitan Museum of Art, always attended by large crowds enjoying the splendidly performed and interesting programs. At one of the recent concerts at the Museum, the First Symphony of Gustav Mahler was presented with such clarity and perfect blending of musical effects that even the music critics in their reviews considered it an outstanding performance.

The merit for such achievements must go principally to Dr. Weissmann, an artist of the highest calibre, a profound musician second to

none among the greatest living today and a man of wide literary and philosophic learning. His deep knowledge of human psychology enables him to get the most out of these players, who in turn make any sort of personal sacrifice, when necessary, to please him. They respond to his sincerity, charm and knowledge with devotion and coöperation, happy to still have the opportunity to make good music.

The orchestra is composed of about eighty-five first-class artists, average age sixty-five, mostly former members of the New York Philharmonic, the Metropolitan Opera Association, the N.B.C. Orchestra, and similar groups. To show a real artist's tendency to never be satisfied but always working for perfection, I relate that some months ago, after the reading rehearsal of the First Symphony of Mahler, several members of the orchestra, who are around eighty years of age, asked permission to take their parts home to study the difficult passages. Then there is the first flutist, Isaack Fidelman, seventy-six, who always complains—and probably has all of his musical life—that his instrument is never in perfect order and cannot bring out the effects he wishes. One morning one of his colleagues asked him how his flute was and the answer was as usual, "very bad, very bad." "Well," retorted the colleague "why don't you try a couple of aspirin on it," which brought a look of disgust to Mr. Fidelman's face. Later he told me that he has sold everything he had of any value in order to raise the sixteen hundred dollars necessary to pay for a solid gold flute he has ordered and which will be completed in a few weeks. He feels that, with

(CONTINUED ON PAGE 18)



# Lure of Laguna Beach

△ "As you desire me, so am I"—PIRANDELLO.

Laguna Beach, comparable to the quotation, has a universal fascination. A salubrious climate and a setting of superb natural beauty are Laguna's more obvious charms.

From "My house on the top of a hill, where the clouds go drifting by," I see the blue ocean always singing, giving my heart the wideness of herself and the everlasting music of the waves.

The shimmering Pacific seems to

*Esther Paul McQuie of Laguna Beach, California. Mu Theta Gamma, Austin, Texas—'32. Los Angeles Alumnae '50 and 51.*



have an affection for Laguna's countless coves and bays, which lend a touch of the unexpected to mile after mile of smooth, golden beaches. An artist would rhapsodize, "Such loveliness I must put on canvas!" The writer would say, "In this quiet place I will write brave, true words."

For culture we have numerous organized groups. Opera Guild, Opera Workshop, Community Concert Course, Music Lovers' Club, The Arts Association and Community Players.

Because of the annual Festival of Arts held each summer in Irvine Bowl, Laguna Beach has been called "The Oberammergau of America." Every summer thousands of visitors from all parts of the world, as well as from every state in the Union, plan a mecca to this unique event. Audiences are invariably spellbound at the beauty and artistry of the nightly "Pageant of the Masters," a series of reproductions of art masterpieces recreated with living models expertly made up and authentically costumed. The figures are posed against backgrounds painted to scale and enclosed in a huge gold frame. An unseen narrator tells the story of the pictures, and their artists. Especially arranged music is an integral part of the program. Each night the Pageant of the Masters is climaxed by a spectacular reproduction of Leonardo da Vinci's "The Last Supper," which sends the audience away in a mood of profound awe.

Laguna Beach is also a city of substantial citizens and lovely homes. We have many film celebrities, famous writers, composers, poets, former opera stars, concert artists and artists of radio fame.

(CONTINUED ON PAGE 48)



Suite" by Milhaud; and "Andante and Variations" by Schumann. Miss Szaroleta is a member of the Fargo-Moorhead symphony orchestra, advisor to the PKX literary society, member of the faculty-student forum chairman of the faculty activities committee and the newly elected president of the Phi Iota Chapter of Mu Phi Epsilon. She will be a piano soloist with the Concordia band in a future Wednesday evening radio broadcast.



HILL BILLY MUSIC echoed from the Wednesday Club Monday when Mu Phi Epsilon staged the first of three Lenten musicals. Mrs. Edward Galloway sang "Hush My Babe" to woe Richard Johnson.

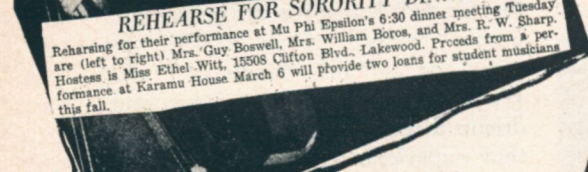


VERA DADE (Mrs Willoughy H.) contributed an Oriental dance as guest artist on the program. "World Harmony in Music" was the theme of the performance.

PRETTY ANN ELEE HUSSONG danced barefoot to "Pop Goes the Weasel." The tot is the daughter of the Earl Hussongs.



SHIRLEY ROSA LUCAS (Mrs. Jules) performed on the violon d'amour. The next musical on Mar. 5 will feature Mu Phi composers.



REHEARSE FOR SORORITY DINNER Rehearsing for their performance at Mu Phi Epsilon's 6:30 dinner meeting Tuesday are (left to right) Mrs. Guy Boswell, Mrs. William Boros, and Mrs. R. W. Sharp. Hostess is Miss Ethel Witt, 15508 Clifton Blvd., Lakewood. Proceeds from a performance at Karamu House March 6 will provide two loans for student musicians this fall.



Practice For Pianists. Members of the University's chapter of Mu Phi Epsilon, national musical society, are shown practicing for a children's Christmas program to be given at 2:30 Sunday afternoon in the Michigan League Ballroom.



MISS JANET ADAMS, music librarian, shows the "Alpine Glee Singer," dated 1852, used in Oregon Territory, open at "Flora's Festival." On the wall is Miss Kinsella's book, "History Singers," containing a reprint of a boy's letter in 1856 telling about the cantata.



MISS HAZEL KINSCHELLA, of the School of Music faculty at the University of Washington, beside the "baby organ" or melodeon she gave the university. She is in the Music Center alcove in the School of Music Library. Cases above the organ contain 19th Century ballads, some dated in the 1850's. On the organ is "The Beauties of Harmony," dated 1835. It is printed with "buckwheat" or shaped notes.





Florence Coardy Merriam

△ FLORENCE COARDY (Pat) Merriam, of Pullman, Washington, is a Mu Phi, who, with her singing organizations, is making Inland Empire history. Her "Merry Wives of Pullman" is a group which represents the merger in 1948 of singers from three organizations in this college town—Faculty Dames, Newcomers and American Association of University Women. Within the larger group is a small one, the "Merry Aires."

Now Pat has organized a male group, "The Squires," and they complement each other, the latter assisting the "Merry Wives." The men come from all walks of life. Pat says she found them in the wheat fields as well as one who is head engineer in a power company, and professors, businessmen, graduate students, high school teachers, etc.

These groups, from the beginning have had only one director,

## PAT MERRIAM

*Writes  
Tuneful History*

Pat Merriam, widely known in the Northwest for her musical talents in many directions—as a concert artist, choral director, composer, and voice and piano teacher. She has burned the midnight oil to complete manuscript copies and enlarge her personal choral library.

As for the personnel, come storm, come any obstacles, nothing deters these wives from attending two-hour weekly rehearsals. In sponsoring their project each chipped in five dollars toward a permanent library. For other expenses they assessed themselves dues. Their library of music constantly grows. Some music is memorized from blackboards.

They do an annual benefit concert that Pat selects from any place in the United States for an immediate worthy project. Over \$2,000 was raised for the Guest House at Walla Walla, which made a hope and dream a reality for the chorus when they experienced the extreme pleasure of seeing appreciation on the faces of the bedridden patients.

Their popularity mounted and now the singers have ended their third successful year, performing fourteen concerts last year, and ending this season with a Choral Concert in April in Todd Hall on the campus of Washington State College. They were the main concert attraction for the "Apple Blossom Festival" this year.

(CONTINUED ON PAGE 40)



Eleanor Schneider, Phi Kappa Chapter, Detroit

△ PHI KAPPA CHAPTER in Detroit is proud to present Eleanor Schneider who recently won the Philadelphia LaScala Grinnell Opera Award for the Metropolitan Opera in New York. Eleanor was a Junior at Wayne University and she tried out for this \$2000 scholarship among 50 other contestants. The finals were narrowed to ten and then to three contestants. Eleanor was chosen for the award and she left in January for New York to study under Wilfred Pelletier, director of the Metropolitan Opera. She will be given a part in one of the operas when the Metropolitan goes on tour next October. Her teacher in Detroit was Mr. Avery Crew.—MARILYN MOELLER.

## VIRGINIA JOHNSON

△ VIRGINIA JOHNSON, Tau chapter, has just won a Rotary fellow-

## PRIDE OF

*Mu  
Phi  
Epsilon*

ship for voice study in Paris. She was sponsored in Rotary International World Competition by the Rotary Club of Torrington, Wyoming, her home town, before coming to the Puget Sound Area several years ago. She competed with entrants from many parts of the world. Her award provides tuition and living for advanced study at the National Conservatory of Music in Paris for the 1951-52 academic years, as well as some travel.

A graduate student at the University of Washington, Virginia hopes to complete her M.A. Degree this spring. She is a member of

(CONTINUED ON PAGE 40)

Virginia Johnson, Tau.





# Triangle Tidbits

**Evalen Bell**, Omega, who is a member of the faculty at John Mills School, Elmwood Park, Illinois, was a member of the visiting staff for the January Midwinter Music Clinic at the University of Wisconsin. She gave a demonstration and lecture with Junior High School voices, and also appeared on a panel discussion.

**Mary Parker Converse**, Mu Rho, Denver composer, was represented at the Colorado Composers Festival, sponsored by the Colorado Federation of Music Clubs.

Mu Phi Epsilon of Kansas City presented **Virginia Voigtlander**, Phi Pi, violinist, of Stephens College faculty, and **Mary Craig French**, well-known soprano, for its autumn curtain-raiser in Edison Hall.

**Frances Grund**, Mu Iota, vocalist, of the Chicago American Conservatory faculty, presented her students in a matinee concert in Recital Hall, Kimball Bldg. in the fall. The review from "Musical Leader" reports, "The performance of the fourteen soloists indicated solid musical preparation."

**Beth Miller**, Mu Gamma, pianist, appeared in concert at Kimball Hall in Chicago on January 23.

**Mrs. John W. Mueller**, St. Louis Alumnae Chapter, was featured in a full column write-up in the "St. Louis Post-Dispatch" for Sunday, November 19. She is a former president, and now chairman of sponsors, of the St. Louis Alumnae Chapter, which annually sponsors three Lenten morning musicales for the benefit of scholarships. She is also a member of the state board of the Missouri Federation of Music Clubs. This winter much of her time will be given to her duties as state chairman of the student musician's auditions to be held in the spring.

**Elizabeth Travis**, Beta, gave a piano recital on December 9 in Chicago at Fullerton Hall. She played the Bach Sonata in D minor and gave the first Chicago performance of Fuleihan's Sonata No. 1. Miss Travis has won acclaim throughout South America, Europe, and many cities in the United States.

**Sylvia Muehling**, Mu Upsilon, pianist, **Eleanor Berger**, NYC Alumnae mezzo-soprano, and **Hildur Barten**, Mu Upsilon, were on the program of the Timely Topics Club meeting, Wednesday, January 10, in the Hotel Wellington, New York City.

**Helen Leefelt**, Mu Xi, an outstanding choral conductor of Elmhurst, Illinois, directed the Elmhurst Philharmonic Choral Club in two performances of Handel's "The Messiah" on December 10 and 11.

**Jean Hutcheon**, Sigma, daughter of **Elsie Hubbard Hutcheon**, charter member of Mu Alpha, is now teaching music in the public schools of Sandwich, Illinois.

**Dorothy Parrish**, New York City Alumnae Chapter, gave a lecture-recital on the music of Bela Bartok at the Phillips Gallery in Washington, D. C., January 8.

**Helen Piper Law** was re-elected Secretary and **Frances Landon Kivlin** was elected Treasurer of the University of Wisconsin School of Music Alumni Association in January.

**Adele Tilson**, Mu Xi, was featured soloist of a Popular Concert of the Chicago Symphony Orchestra conducted by Tauno Hannikainen.

**Darlene Maher Evers**, contralto, was a soloist in the Drake University presentation of "The Messiah" in Des Moines' KRNT Theater on December 9. She is president of Omega Chapter.

**Elizabeth Wysor**, New York City Alumnae Chapter, had a leading role in the new Benjamin Britten-Eric Crozier musical "Let's Make an Opera." "Philippine Experience" by **Grace Wash** won second place in the Midwestern Writers' Conference.

**Ruthlyn Milota**, Phi Omicron, has succeeded Dixie Holden as Broadcaster of the WBOE Radio Music Lessons in Cleveland. Dixie, a member of the Cleveland Alumnae Chapter, has moved into the position of Assistant Supervisor of Music at the Board of Education.

**Rachel Williams Rice**, Mu Rho, pianist, was presented in a Faculty recital at Western State College of Colorado on November 19, 1950.

**Pauline Baker**, St. Louis Alumnae Chapter, has a Musical Quiz program on Station WEW each Thursday afternoon. Questions sent in are answered by local musical experts.

**Paula Lechner**, New York City Alumnae Chapter, was guest artist at the annual opening dinner of the Musicians Club, Hotel Plaza, on November 14; she has also commenced a busy season at the Metropolitan Opera.

**Lucille Campbell Cooper**, pianist of the University of Wisconsin music faculty, is appearing this season with the Pro Arte quartet.

**Joan Metcalf Schaefer**, Epsilon, is Dean of Women at the Carnegie Institute of Technology and Margaret Morrison Carnegie College for Women at Pittsburgh, Pennsylvania.

**Janet Hagen Ulmer**, Theta, was one of four talented young St. Louis musicians presented by The Artist Presentation Committee in January.



Frances Yeend as she appeared in concerts at New Trier High School, Winnetka.

Phi Xi Chapter entertained other Texas chapters in first Texas State Convention in 1947.



Each year Phi Iota girls belong to the Concordia Concert Choir at the Concordia Conservatory of Music, Moorhead, Minnesota.



Phi Zeta Chapter in Sioux City, Iowa

## IN THE NEWS

Phi Kappa's dance at "Wintermart." Served root beer and pretzels.



Initiates, alumnae and charter members at Epsilon Mu initiation.





## Old Timers

(CONTINUED FROM PAGE 11)

the sound of his solid gold flute, the Old Timers' Orchestra will reach a much higher degree of perfection in tone quality.

Another reason for recent artistic excitement was the publicity in all the papers concerning the return to the first viola player of this orchestra, Guiseppe Vanni, of his very valuable instrument which was stolen twenty-one years ago. He also thinks that the tone of his two hundred

years old viola will make an improvement on the quality of the sound of the whole orchestra.

Dr. Weissmann has repeated on many occasions that the artistic satisfaction he derives from the Old Timers' Orchestra surpasses any he has had from the many orchestras he has conducted in Europe, South America, United States and Canada. He feels that this orchestra has the only musicians who love to make music for real art's sake rather than for stipulated salaries.

BY ATTILIO MARCHETTI

(Formerly solo oboist with the New York Philharmonic, Metropolitan Opera Association, Philadelphia Symphony Orchestra)

## Winners

(CONTINUED FROM PAGE 4)

at Wayne University in Detroit and an initiate of Mu Upsilon Chapter, won two first prizes in Division III. Her "String Quartet No. 2" was given first prize in Class B and her "Thoughtful Piece" for clarinet and piano, first prize in Class C. Ruth studied at Wayne University, Eastman School of Music and at the Berkshire Music Center, Tanglewood, Mass., where she had composition with Arthur Honegger, Samuel Barber and Aaron Copland. Before joining the faculty at Wayne University she taught at the University of Missouri, and in 1948 was awarded the University of Missouri Summer Research Grant to write her second symphony. Her orchestral works have been performed by the Rochester Civic Orchestra; Wayne University Symphony Orchestra; Joplin Civic Orchestra; Hastings, Nebraska, Orchestra; Arkansas Philharmonic, and Virginia State Orchestra. In May her Good

Luck Overture will be performed on a program celebrating Detroit's 250th Anniversary.

Honorable Mention in this Division went to Katharine Mulky of Xi for her "Theme and Variations" in Class B, and to Minabel Hunt of the Los Angeles Alumnae Chapter for her choral number "A Noel" in Class C.

Congratulations to these winners, and may this spur them on to finer efforts in the field of composition. Our thanks, also, to all the other Mu Phis who entered the Contest, and may we remind you of the 1951 Contest and suggest that you all try again.

## Births

*Epsilon Iota*—

Mr. and Mrs. Jack Shrauger (Phyllis Dubois) a son, Michael Kyle

*Lansing—E. Lansing Alumnae*—

Mr. and Mrs. Robert C. Burchill (Harriett Hillier), a daughter, Emily Elna, July 11, 1950

Mr. and Mrs. Richard L. Johnston (Katherine Freeman), a daughter, Peggy Ann, July 31, 1950



Mrs. Sam Shloss

## A PATRONESS' GOLDEN KEY to Lighten the Hours

△ THROUGHOUT the United States loyal women are giving hours of their time, and gladly, to lighten and make brighter the many hours that our service boys are having to spend in veterans' hospitals. One of these women in Iowa is none other than one of our own loyal patronesses, Mrs. Sam Shloss—Gertrude to us—who is State Chairman of Music in Hospitals for the National Federation of Music Clubs.

In addition to organizing a training course for thirty women in April of 1948, Gertrude personally has given over three hundred hours at the Des Moines Veterans' Hospital

as performer and teacher of the auto harp.

She was one of the first patronesses of Omega chapter, and was chairman of the Scholarship Fund committee last year for the Des Moines Alumnae chapter. Several years ago she wrote and directed a citywide Girl Scout Pageant in Des Moines. She and her husband are charter members of the Civic Music Association here, and each has served as president. These are only a few of the music projects the Schlosses have untiringly accomplished in Des Moines.



# Historians Reporting

## △ △ Atlantic Province △ △

**BETA CHAPTER** is proud to have played an important role in forming the Professional Panhellenic Council at the New England Conservatory of Music. Working with the other two music sororities, we drew up a constitution and rules for rushing which have worked very successfully and have been heartily endorsed by our National President.

On Founders' Day we held our annual joint tea and concert with Phi Upsilon and the Boston Alumnae Chapter.

Congratulations to Elizabeth Gill, pianist, who was awarded the Beta Scholarship. Betty Lee Holmgren, Donna Walsh, and Cynthia Swift were scholarship students at Tanglewood last summer.

We have had a busy year under our president, Vivian Johnston, and are looking forward to more activities under our new officers headed by Mary Ryan.—**DONNA WALSH, Historian.**

**MU CHAPTER** sponsors a sale of tickets each year to the all Star Concert Series which is held in Atlanta, Georgia. These tickets are sold among the Brenau College and the Brenau Academy students.

Initiation was held Monday evening February 12, and the following girls were initiated: Jane Laird Bovard, Betty Rose Herndon, Jacquelyn Hogsed and Barbara Huie. Following initiation our faculty advisor, Eliza Holmes Feldmann, entertained all the active members at a party at her home.

Five of our members will give senior recitals this spring. They are: Sarah Davidson, Marie Harris, Ruth Kirby, Anita Oliver, and Bebe Wells. These girls will graduate in May and we really will miss them and wish them the best of luck.—**MARIAN MARTIN, Historian.**

**MU UPSILON CHAPTER** has been having a very busy and happy year. Our activities began in November when we had a fashion show in Foster Hall. The models were girls from our own chapter

and the clothes were loaned to us by Levines, one of the exclusive shops of Rochester. The clothes were so beautiful and we had such a good audience that we decided to make this fashion show an annual event.

In December we had a Christmas tea in honor of our patrons. The highlight of the afternoon was a visit from Santa Claus, Elaine Bonazzi. A few evenings later we were invited to a Christmas party at the home of Gladys Rosseutcher, alumna. Since we were all filled with the Christmas spirit, we had a caroling party on December 14. In the group were members of Sigma Alpha Iota, Phi Mu Alpha boys and our own chapter. This was followed by a party at the dormitory. We felt we had spread much Christmas cheer.

So far we have given two musicales, one for the alumnae club, and the other for our patroness, Mrs. Belle S. Gitelman, who presented a preview showing of some of her paintings. She spent last summer in Europe and plans to tell our chapter of her experiences at one of our future meetings.

In February seventeen girls were initiated. Following this we had a delicious spaghetti dinner at Lorenzo's Restaurant. Our future plans include a noon recital in Kilbourn Hall at the Eastman School of Music and a spring concert with Phi Mu Alpha fraternity.—**DORIS M. RAHL, Historian.**

**PHI UPSILON CHAPTER** joined forces with all organizations of the B. U. College of Music for the second annual "College of Music Formal" which was in the Hotel Statler, Boston, Mass., in February. Representing Mu Phi Epsilon on the committee were: Janice Cole, Audrey Andrew, Lois Robling, Elizabeth Saucerman and Susan Shelvin.

As Americans, we are all proud of our heritage, the native land of the four hero chaplains who gave their lives for brotherhood when the *S. S. Dorchester*

was sunk in 1943. We remember that when their ship was torpedoed, these four chaplains, one Catholic, one Jewish, and two Protestant, gave their own lifebelts to the men of the ship and were last seen kneeling on the deck of the sinking ship praying to one God. In the past eight years many philanthropic works have been done in the name of the four chaplains, the latest of these being the "Chapel of the Four Chaplains," which was dedicated in Philadelphia in February.

As members of Mu Phi Epsilon we are doubly proud of our heritage as one of our sisters, Mary Fox Murray is the daughter of George Fox, one of the four chaplains. Mary has served Phi Upsilon chapter as chaplain and as historian.

A "Sterling-Mathias Musical Tea" for mothers of Phi Upsilon chapter members will be given at the home of our faculty advisor, Margaret Starr McLain in April.

We are proud of Maria Gaillard who is studying at the University of Bruges in Holland. Maria was initiated last spring while studying at B. U. She was awarded a research scholarship to continue her extensive study of folk song.

Phi Mu Alpha Sinfonia will join with our chapter in a joint concert of liturgical music in April at B. U.'s "Daniel L. Marsh Chapel" under the direction of Everett Titcomb, a member of the faculty and a Sinfonian, with Samuel Walter, organist, also on the faculty.

The following have received scholarships: Hazel Farwell, Katherine Ela, New England Scholarship; Ethel Thibodeau, B. U. General; Mary F. Conway, Worcester County Young Artists' Recitals, and Eileen Collari's honors are: Entry in "Who's Who in American Colleges and Universities" and Scarlet Key.

Appearing on a graduate recital will be: Elizabeth Anne Saucerman, pianist, and on senior recitals: Helen Elizabeth Dyer, Joanne Adams Roach, Olga Stone, Eileen Marie Collari, Lois Jane Hill, Hazel Adelaide Farwell, and Helen Scott, pianists; Janice Helen Cole, violinist. Joan Carol Johnson, soprano; and Mary Frances Conway, organist. In April will be a mixed concert by members of Phi Upsilon chapter.

Initiates were: Elsie Louise Kruger, Shirley Elizabeth MacMillan, Nancy True McGowan, Delores Pauline Mer-

cier, Mae D. Reinstein, Helen Frances Scott, Yvette Therese St. Jean, Ethel Theresa Thibodeau, Janice Muriel Thresher, Maxine Emma Webber and Natalie Rochelle Werbner.—**ANNE M. GRAY, Historian.**

**PHI PSI CHAPTER** is again planning to award a Loving Cup to the outstanding musician in the class of 1951.

Work has begun on a new Fine Arts Building at Mary Washington and Phi Psi Chapter plans to make a donation in the form of some needed equipment to the building, and continue this practice annually.

In January we had a most successful reception and musical program in honor of the patrons and patronesses of our chapter. At this time the new chairman of the patrons and patronesses was formally installed.

Phi Psi has been continuing their monthly sales which are very successful. Also, we are in charge of directing the local Presbyterian Church Choir for the year, which is providing experience for all the girls.—**DONNA HANKLA.**

**EPSILON NU'S** faculty sponsor, Elizabeth A. McEnney, was guest soloist with the University Community Symphony Orchestra in November, singing "Deh per questo istante," by Mozart, and "Il est doux" by Massenet.

Also in January, Kathryn Maiolo, Dolores Lawson, and Bernadine McCutcheon gave a joint recital. Lois Ann Flesher appeared on recital in February; all were accompanied by Mrs. McEnney. Doris Crawford, Jeanne Rampp, Bernadine McCutcheon and Dolores Lawson entertained for the University Campus Club tea in February.

In March our chapter held initiation in Haden Chapel of Wesley Church. Following this our patronesses, Mesdames Samuel Morris, Charles Baker, Weldon Hart and Irvin Stewart, served a buffet supper for the members and initiates in the home of Mr. and Mrs. Charles Baker.

Our sorority sponsored a recital in February by Thomas Richnor, pianist, and faculty member at Columbia University.—**DORIS JEAN CRAWFORD, Historian.**

**NEW YORK CITY ALUMNAE CHAPTER'S** outstanding success was our



concert and broadcast over WNYC at Carl Fischer Hall, in February, which was part of that radio station's annual American Music Festival under the direction of Herman Neuman, who was all over the stage helping us. Thirteen American composers were represented, seven of them Mu Phi's. On this program Frances Yeend of the City Center Opera appeared both as artist and composer, as did Blythe Owen, pianist, who came from Chicago to do so and who is a Mu Phi prize winner. Ruth Bradley who was at the piano for Frances Yeend was also represented by one composition sung by Frances. Others who appeared on the program were Jean Cumming, Margaret Weyand, Elva Kelsall, Dorothy Parrish, Doris Bolvig, Hildur Barten, Lillian Rehberg, Mary Gale Hafford, Norma Holmes, Elizabeth Artman, Bernice Urdane, Guelda Sherman, Gwendolyn Thomas and Helen Clark Moore who conducted the ensembles. Assisting were these gentlemen: Lawrence Turner, Clark Steigerwalt, Michael Barten and Charles Miller, two of them Mu Phi husbands. Jean Cumming returned from Bermuda the middle of January, having made for several months very successful appearances in hotels, churches, concerts and on radio. Artists who performed at our last two meetings were Ora Witte (our Feb. meeting was at her lovely studio), Doris Froelich, Sylvia Muehling, Lucretia Harrison, Ethel Murray and Gladys Hodges. Rose Dirman was soloist for several months of Oratorio Sundays at the Holy Trinity Lutheran Church, Central Park West. Frances Yeend appeared in Verdi's *Manzoni Requiem* with the Dallas Symphony Orchestra. After her recent lecture-recital in the Phillips Gallery at Washington, D. C., the Washington Post said in reference to her rendition of Bartok music, "Dorothy Parrish is a bold woman whose talents justify her daring." *The Times-Herald* stated "Dorothy Parrish shows mastery of Bartok music." Sylvia Muehling, pianist, gave her second successful recital at Town Hall in February. Grace Hoffman, mezzo, is the second annual winner of a Blanche Thebom scholarship, providing two years musical education. Ruth Bradley will tour in the West as follows: Indianapolis, April 10; Centralia, Ill.,

April 17; Tacoma, Wash., May 8, a piano recital for the benefit of the Mu Phi Scholarship Fund; Salt Lake City, May 13, accompanist for Paula Lechner of the Metropolitan Opera in her recital for the National Federation of Music Clubs; Palo Alto, Texas, May 21, piano recital. Then she goes to Southern California and back to Portland, Oregon, and maybe to Alaska and home by fall. On Feb. 14 a program of Ruth's songs was sung in Camden, N. J., before the Beethoven Club.

Mrs. Hattie Bradley, mother of Ruth Bradley Jones, passed away January 10, 1951. She was a true friend of Mu Phi Epsilon, and will be remembered by many of our members as a charming hostess and one who was very near to the hearts of many of us.—ROBERTINA ROBERTSON, *Historian*.

**WASHINGTON ALUMNAE CHAPTER** was entertained in February by our "veep," Mary Louise Hill, while President Lola Orr was vacationing in Florida. But Lola, always on the alert, was in the thick of Mu Phi Epsilon plans even there, helping St. Petersburg set up an alumnae chapter.

Sylvia Meyer, National Symphony harpist, received the crowning distinction of being designated harpist in "Holiday" magazine's "dream orchestra" (March issue.) Last month Sylvia gave a delightful and informative 45-minute radio broadcast and has recently been featured with her harp on television.

Susannah Coleman accompanied baritone David Baker in a recital at the Arts Club in February. Mr. Baker presented two of Sue's compositions here as well as earlier in New York on his Carnegie Hall recital. An inspirational vespers' program at the Emory Methodist Church was given recently by Gertrude Parsons, organist. We are proud, indeed, of the capabilities of Quinta Frey and Olive Witters, 1st and 2nd vice presidents, respectively, of the Friday Morning Music Club.

Plans for the spring include our District conference in Philadelphia, March 31, and a joint program in April with S.A.I.—DORTHLYN GRIFFIN SMITH, *Historian*.



## East Central Province



**ZETA CHAPTER** has had a very pleasant year. Soon after the school opened in the fall we held a tea for all Mu Phi alumnae, women faculty members in the School of Music, and all women students who are music majors or are in the School of Music. This tea was very well attended and a successful affair. We initiated five girls in October with a dinner following. Also in October we pledged nine girls, the largest group for several years. On Founders' Day we met with our alumnae members for a dessert and short program. In December our last two classes of initiates combined to give their pledge recital, which was a very well prepared and presented program. This year, we are continuing our practice of ushering at all university band concerts. We also are still following the custom of giving a scholarship of \$50.00 each semester to a woman student in the School of Music.

This year we are starting a new idea of sending at the end of each semester a newsletter to our chapter alumnae.—VIRGINIA ARNOLD.

**THETA CHAPTER** has been running along smoothly. Our programs are contrasts, such as vocal works, old and new or instrumental, old and new. We had pledge ceremony November 6 for seven girls and initiated them in January. One of them, Phyllis Sutphin, was chosen to appear on the St. Louis Artists' Presentation Committee programs. She was very favorably received.

Our chapter goes caroling in Scruggs Vandervoort Barney, a large department store each year, and this year was no exception. We wear red capes and sing in the three dining places accompanied by flute or violin. The money turned over to Carolers' Society.

The Lenten Musicale Committee worked very hard planning our three programs, one of which is always costumed. The proceeds of this go into our scholarship fund. Our Christmas program was in a large church with a huge new organ so that our many organists had a chance to appear, along with numerous vocalists.—HELEN ANDERSON.

**OMEGA CHAPTER** is having a busy and successful year. We started the year

by being invited to a Smorgasborg given by the Des Moines alumnae Chapter at Walnut Woods. There was food galore! Later in the fall we gave a joint musicale with the Sigma Alpha Iota's and the Phi Mu Alphas in which Darlene Maher Evers sang the solo in Brahms' *Alto Rhapsody* and the three groups combined in a chorus to sing several numbers. This semester, in February, Omega chapter gave an Open Musicale at the lovely home of our new patroness, Mrs. Fred Swanson, Jr. Those performing were: Geneva Devine, pianist; Shirley Kluckhohn, mezzo-soprano; Norma Myhr, soprano; a sextet composed of Darlene Evers, Margaret Grogan, Joan Toepfer, Betty Kay Higdon, Dorothy Luft, and Shirley Clingman, and a trio composed of Ann Schoonover, violin; Pat Noel, cello, and Jane Hayes, pianist. Unaffiliated girls, members of Phi Mu Alpha and Sigma Alpha Iota and several of our alumnae attended, as well as several parents. The hostess served refreshments to complete a very enjoyable afternoon.

Omega chapter has just completed a successful rush week which was climaxed by a very enjoyable rush party "Easter Parade" at the spacious home of Mrs. David Milligan, one of our patronesses. To carry out the theme of the party by making Easter hats, the Omega girls brought ribbons, flowers, veils, paper doilies and paper plates, pipe cleaners, et cetera. Two Mu Phi's dressed as Easter bunnies passed the materials around, letting each rushee choose her material to work with. After the girls completed their hats, they paraded around the room to be judged and the winner was given a chocolate rabbit for a prize. We now have five very fine pledges: Hope Nelson, Barbara Dixon, Joan Harper, Lorraine Hess, and Marianne Schneider. Last semester we pledged and initiated Ann Schoonover, Pat Noel, Gretchen Gutshall, Beverly Bell, and Catherine Conant.

The election of officers was held recently, the results being: President, Dorothy Luft; Vice President, Margaret Grogan; Recording Secretary, Gretchen Gutshall; Corresponding Secretary, Charlotte Vanicek; Treasurer, Joan Toepfer; Historian, Carolyn Combs; Rush Chair-



man, Betty Kay Higdon; Chaplain, Shirley Patterson Clingman; Warden, Joyce Gibbs; Magazine and Publicity Chairman, Catherine Conant.

Right now we are practicing for our Sweetheart Sing to be held on March 12 in which the social sororities and fraternities compete, and the three professional fraternities, Sigma Alpha Iota, Phi Mu Alpha and Mu Phi Epsilon each sing while the judges are making their decisions. Our chorister, Geneva Devine, made fine arrangements of the Mu Phi "Dub Song" and "Body and Soul."

Girls of Omega Chapter have been busy individually as well as in group work for MΦE, as shown by the achievements of the following girls: Gertrude Van Ginkle, *Who's Who Among Students in American Colleges and Universities*, President of Kappa Kappa Gamma and Song Leader of the Kappas in Sweetheart Sing and Senior Recital; Margaret Grogan, Second Place in the Mu Phi Epsilon Scholarship Voice Contest; Darlene Maher Evers, Quax's (Yearbook) *Who's Who, Who's Who in American Colleges*, "The Messiah" contralto soloist, sang the role of Baba in "The Medium" given by Drake students, Night of Opera soloist, and senior recital. Shirley Kluckhohn, Song leader of Chi Omega in Sweetheart Sing, Night of Opera Soloist, and senior recital. Shirley Patterson Clingman, High Honor Scholarship Winner, spring semester of 1951. Joyce Gibbs, Social Chairman of Phi Mu. Dorothy Luft, Scholarship Chairman and Song Leader of Delta Zeta. Virginia Lee, first alternate in the Sigma Alpha Iota Scholarship Contest for piano students. Carolyn Combs, Phi Sigma Iota (Honorary Romance Language Fraternity), and winner of the Christian Science Scholarship for a Fine Arts Student, and Jane Hayes, Senior Recital.

We are now looking forward to being hostesses at the Mu Phi Epsilon Area Conference to be held in Des Moines April 21. All Iowa chapters and alumnae chapters have been invited to attend.

We of Omega chapter hope that all other Mu Phi Epsilon chapters are having and will continue to have as successful and busy years as we are having.—CAROLYN COMBS, *Historian*.

MU ALPHA has spent a busy year working and having fun while learning. One of the highlights of our year came when we served coffee and doughnuts to the President's Planning Conference of Phi Mu Alpha Sinfonia, which met on the Simpson College campus in January. In return we were invited to their banquet that evening, and our picture is to appear in the current issue of the *Sinfonian*.

In February we pledged eight girls and initiated our first semester pledge, Janet George. Two of our new pledges, Doris Boruff and Joan Walter, are candidates for Beauty Queen. Also Doris Boruff, Marcene Ross, and Phyllis Young are candidates for Representative Women, an award given annually to outstanding students on campus.

Plans are being made for a "What-Should-I-Call-It" party, and a snack bar for the Music Hall in an effort to make money for the Area Conference planned in Des Moines in April.

Aside from these Mu Phi activities, student recitals are getting under way; and we're all busy presenting and attending these enjoyable programs. We're busy, but we love it!—PHYLLIS YOUNG, *Historian*.

MU EPSILON CHAPTER started the fall season with a very successful candy sale in the MacPhail School lobby, September 13. The proceeds went into the scholarship fund.

Several girls have gone to the Veterans' Hospital for their entertainment programs in the wards and for church services. Cleo Hiner is in charge.

We had a wonderful Christmas party at Mrs. Paul Preus'.

Our February rushing party was held at Mrs. Omar Curtis'. There were some rare art masterpieces since everyone drew pictures of a song.

The patronesses had a tea at Mrs. Russell Ives, for their scholarship fund. On the program from our chapter were Mary Ellen Sturtevant Jenkins, soprano; Gloria Burkhart Cooper, violinist; and Lenore Engdahl Kwaniewski, pianist.

We are very happy to welcome Mrs. R. M. Quinn as one of our patronesses. She was initiated at the Christmas party. Gloria Cooper is a violinist with the Birmingham Symphony Orchestra. Jack-

ie Melvin is concertmistress with the Spokane Symphony Orchestra. Joyce Hanson received the Mu Epsilon Scholarship last June.—LOUISE COBLEY.



Left to right: Ruth Havlik, Esther O'Toole and Janice Tkach.

PHI RHO CHAPTER has found a wonderful way to earn money and serve our school all at the same time and we would like to share it with you. We call it "Snack Day." About once every two or three weeks we serve sandwiches, cake or cookies and coffee to the students and teachers at the college.

To begin with each member donated a certain amount of time, food, energy and equipment and in that way no one was particularly hard-pressed. We have worked it out to the point where it is almost a self-sustaining project now as far as food and cost donations. However, time and energy will always be needed but that's what makes it all so much fun. Why don't you try a "Snack Day" at your school or college?

We are happy to say that we have had one lovely open program during the post-Christmas season and are planning on two more. In March, a recital was given in the college auditorium with Rose Marie Hinman and Esther O'Toole each doing a group of vocal solos, Evalyn Rieke Shenk performed a group of violin solos and our Phi Rho Trio, consisting of Rose Marie, Esther and Janice Tkach, concluded the program with a selection of Brahms "Zigeunerlieder." Ruth Havlik accompanied throughout the recital.

The two programs we had in April were a violin recital by Evalyn Shenk and a voice recital by Esther O'Toole on

Tuesday, April 24. Ruth Havlik will be the accompanist for both of these ladies.

We have had an interesting year and are looking forward to greeting seven new pledges and welcoming them into our group.—MAE DETERT, *Historian*.

EPSILON GAMMA CHAPTER sponsored Clyde Ellzey in a concert on January 11. We made approximately fifty dollars to give to the Shepperd Memorial Fund.

Allie Ruth Causey and Gerry Cade were initiated into our chapter in February.

Beth Chapman, Hampton Holland, and Sara Ruth Rochester are going to be pledged on March 9. The pledge service is to be followed by a supper in Helen Travis Avery's home.

Helen Traubel gave a concert in Jackson in February. Epsilon Gamma Chapter sent her a corsage of violets.

Our chapter is going to present a musical program at the Veterans Hospital in April and a radio program in May.

Epsilon Gamma Chapter plans to close the year's activities with a banquet at one of the local restaurants.—BETTY ANNE STORER, *Historian*.

CINCINNATI ALUMNAE CHAPTER has been saddened by the death recently of Francis Payne Raber, an early member of Alpha Chapter. Francis was active in musical circles of Cincinnati and gave particularly of her time and energy to volunteer work for the Symphony Orchestra.

Our first meeting of the current year was a memorial service for three Alpha Chapter members and our co-founder, Elizabeth Mathias Fuqua, all of whom passed away last year. The three members were Sara Craig MacLeod, Anna Von Unruh Woolley and Madeline Moser Hughes.

Francis Yeend, our good Mu Phi friend from Seattle and talented and attractive soprano of opera and the concert stage, was soloist at the last Matinee Musicale of the Cincinnati Series and received "rave" notices from the newspaper critics for her beautiful voice, artistry and charm.

All of the Cincinnati Mu Phi Chapters will join in honoring Helen Traubel with a tea at the College of Music when she



appears as soloist with the Cincinnati Symphony Orchestra on April 13.—ANNETTE FILLMORE MANNING, *Historian*.

**ST. LOUIS ALUMNAE CHAPTER** opened their year with a tea at the home of Ellen Graf. It was a lovely party and we enjoyed hearing a report of the National Convention from our president Cleo Milligan.

The theme of our programs for the year is "Composers of the First Half of the Twentieth Century." So far we have heard modern French, German, Russian and American composers.

At the present time we are looking forward to our Lenten Morning Musicales. These are given in conjunction with Theta Chapter. The proceeds from these musicales are used for our Scholarship Fund.

The first one is entitled "World Harmony in Music." Music of Norway,

Spain, the Orient and pioneer and modern music of America will be used on this program.

The second program is dedicated to Mu Phi Composers. The composers whose works are being used are June Weybright, Dorothy Gaynor Blake, Evelyn Busby, Blythe Owen, Dorothy James, Gladys Rich, and Mrs. H. H. A. Beach. June Weybright and Dorothy Gaynor Blake will appear on the program.

The third program is mostly Sacred Music. This program always comes the Monday of Holy Week so the program is in keeping with this.

We still have programs of composers of North and South America, England, Slavic, and Italian to be given to complete our year and we are looking forward to hearing all of them. Our year will close with installation of officers and a picnic at the country home of one of our past presidents, Charlotte Stockton.—RUTH FUERST SCHOENLE, *Historian*.



## Great Lakes Province



**GAMMA CHAPTER** elected officers in March. Carol Eagle, president, is a member of Gamma Phi Beta and Wyvern, sophomore honorary women's society. Nancy Finlay will receive her Master's Degree in Music Education in June. In April a group from our chapter entertained the Odd Fellows Club in South Lyon. They were: Lillian Johnson, Joan Zapf, Carol Eagle and Barbara. They sang barber shop favorites. The proceeds of the program went to the group's treasury.

In February fifteen girls were initiated. Initiation was held at the home of Mrs. Paul Kempf. A dinner followed. In March the initiates presented a musicale for the actives and patronesses. Rose Marie Jun, Gamma alumna, and now teaching fellow at the University, recently performed as one of the winners of the student solo contest. She sang the part of Pamina in "The Magic Flute" by Mozart, a student production. This opera was presented five nights at the University and on a special television broadcast to the Detroit area. Other Mu Phi's performing in the opera were: Gloria Goman, Betty Wiles, Ruth Campbell and Joan Zapf.

Members who presented recitals as partial fulfillment for their degrees this June are: Emily Karch, Doris Anderson, Ruth Stein, Dottie Webb, and Siglinde Soskojus, pianists, and Mary Lou Herold and Mary Lown Richards, organists. Other members receiving degrees in June are: Pat Herman, Delore Oates, Lanotte Flower, Jo Anne Green and Nancy Finlay.

Doris Waldecker and Betty Woltdt are members of the University Symphony Orchestra, which presented concerts in Detroit and Ann Arbor, and several nearby towns. A special concert of contemporary music was presented in March for all actives and alumnae in Ann Arbor and Ypsilanti. Gamma girls performing were Barbara Stoltz, Ruth Campbell, Norma Heyde and Ruth Campbell.—LENORE BROOKS, *Historian*.

**IOTA ALPHA** girls are very busy. Cleone Carney and Maxine Knorr, pianists, and Elaine Ryback, Fr. Horn, and Lucile Ringel, vocalists, presented a musical program for the Woodshore Women's Club in March. Jean Stern, pianist, will appear on the inter-chapter recital at Gad's Hill in April. At a very lovely

initiation ceremony in January six girls were initiated, namely: Cleone Carney, Georgiana Becker, Jean Stern, Loretta Sedlack, Anna Mary Look and Elaine Ryback.—LUCILE RINGEL.

**MU XI CHAPTER** officially opened our 1950 school year with a formal rush tea at the Blackstone Hotel, which was a tremendous success. Among those present were rushees, five guests from our Northwestern Chapter and twenty-five of our own members. Elva Gamble, National Second Vice President, gave a fine talk on our sorority. Our second rush party was informal and the theme of the evening was that of a circus. There was a fortune teller, bearded lady, snake charmer, hula dancer, real lion, et cetera. A good time was had by all—right down to the last hot dog.

We had a lovely Christmas party at the conservatory with the exchanging of gifts and refreshments. Carol Smith and Lola Pinney represented Mu Xi in the "Mu Phi of the Year Contest," sponsored by the Chicago Alumnae Chapter. Decorations of an Easter theme did much to make a successful evening at our initiation ceremony at the Conservatory. A musical program and refreshments followed.

For our main money-making endeavor this year we are planning on giving our "Melodeopia," which is a take-off on "Little Nell and the Wayward Father," set to operatic music. It will be given in April at the Conservatory Recital Hall, admission 50c. We awarded a \$100 prize to the winner of our annual scholarship contest held at the Conservatory. In March we are giving a joint recital with the other music sororities in our school. Patricia Royney and Mary Hartley will represent Mu Phi Epsilon. Profits will be divided among the sororities, admission also 50c.—LOLA PINNEY.

**PHI KAPPA CHAPTER** participated in the annual "Wintermart" put on by Wayne University. Featured was a German Band with dancers. The rest of the members served root beer and pretzels in a booth next to the band.

Sally Dow is now studying in Paris.

On March 25, our chapter presented a Bach concert at the First Congregational Church. Appearing were a vocal ensemble accompanied by Shirley Wall; a

trio with Ruth Bell and Dorothy Hess, flutists; Beth Shafe, cellist, and Janet Witham, pianist; Shirley Zaft, soprano, with Viola Olds, accompanist; Harry Langsford, guest organist; a string ensemble with voice with Shirley Zaft, soprano, Dorothy Hess and Ruth S. Bell, flutists, Jeanne Nuechterlein, clarinetist, Beth Shafe, cellist, and Viola Olds, pianist.

New officers are: Janet Witham Hochstein, president; Collette Salon, vice president; Janet Bell, recording secretary; Joan Horne, corresponding secretary; Marion Moeller, historian; Shirley Wall, chorister; Audrey Marlow, chaplain; and Viola Olds, alumnae correspondent.

The Detroit Musicians' League of Detroit had a meeting in which they featured the three music sororities in Detroit. Each of the sororities participated in the program. From Mu Phi Epsilon was Marilyn Moeller playing a flute solo with Janet Witham Hochstein accompanying.—VIOLA MAE OLDS.

**EPSILON LAMBDA CHAPTER** at Ypsilanti, Michigan, has had an eventful time during the past few months. We held our Sacred Music Concert in January. Instrumental and vocal solos by individual members and choral numbers by the chapter as a group comprised the program which included an organ solo, "Autumnal," by our chapter adviser, Dorothy James. Also in January, we gave a reception for soprano, Edna Phillips, following her concert appearance in Pease Auditorium. Our chapter held a joint semi-formal dance named "Frolic, Opus No. 1" with the local Delta Xi Chapter of Phi Mu Alpha Sinfonia Fraternity in January.

Members of our chapter have appeared in recent college events. Mignon Miller had a leading role in the senior musical, "Go Get 'Em." Mary Troub, oboist, performed as soloist in the college orchestra concert. Marie Shaker and Lucille Nelson, pledges, and Joanne Wilson have appeared in public student recitals. During the Christmas season, Epsilon Lambda Chapter provided a music room at the All-College Christmas Party and took part in the all college Christmas Sing. Different members have served as ushers at various musical functions of the college.

We are proud to have Ann Emerick,



Catherine Kemp, Lucille Nelson, Gretchen Pearson, Marie Shaker, and Eleanor Voldrich as our new pledges.—**JOANNE WILSON.**

**ANN ARBOR ALUMNAE CHAPTER** has had a series of very interesting programs at our meetings on the theme, "A Year of American Music." They have been chosen and arranged by our very able chairman, Frances Danforth. Our November program was devoted to works of Mu Phi composers, including selections for both piano and organ by our own Dorothy James.

On March 5 we invited the actives of Gamma and Epsilon Lambda chapters and their patronesses to be our guests at a musicale held in the Michigan League.

Lois Harper Anderson, who teaches both at the University and in the Ann Arbor public schools, directs a program entitled "Song Festival" two days a week on station WUOM. We were all very proud of Lois when we learned that it had been voted the favorite program by listeners to the station. It will soon be lengthened from fifteen minutes to half an hour.

Alta Muehlig is recuperating from an automobile accident. Alta has played many programs on her accordion in the Veterans' hospitals and in Ann Arbor, and we will all be glad when she is up again.

Louise Cuyler is on sabbatical leave for the second semester. She received a grant from the Rackham Fund for research and is traveling in Greece, Italy, and France.—**SARAH VANCE KILGOUR.**

**CLEVELAND ALUMNAE CHAPTER** sponsored a theater night in March at Karamu House. Proceeds will be used toward two scholarship loans that we are making available to the two active chapters, Phi Omicron and Mu Phi. Each scholarship is for \$100.00, each payable two years after graduation without interest. The musical is "Lost in the Stars" and Bernice Austin Huestis was accompanist for all the solos.—**SOPHIE SOEFKER HERZBERGER.**

**COLUMBUS ALUMNAE CHAPTER,** one of the youngest in our Mu Phi Epsilon family, is gaining and growing steadily. Olive June Dickson opened her home

for our first Founders' Day celebration. At Christmas time a party was held at the home of Dorothy Stevens Humphreys. In February we met with Virginia Payne of Worthington. After a formal business meeting, active girls from Mu Pi chapter presented the program. They were: Alice Amich, vocalist, and Marian Thompson, accompanist. Doris Scherzer, violinist, and Carol Evans, accompanist, from our chapter also were on the program. An informal tea followed.—**DOROTHY K. BUSSARD, Historian.**

**THE LANSING-EAST LANSING ALUMNAE CLUB** was entertained by our president, Nell Freeland, in September at her home. Evelyn Bailey reported on the convention at our October meeting and a lovely piano program was given by Esther Hagen Rogers.

We shared our November program with our husbands when George Parsons, guest speaker, told of his experiences in Germany last summer and showed many beautiful pictures. Juliet Dowdy Alexopoulos was the hostess. Ruth Ann Tukey told of her travels and musical experiences last spring in Belgium, France and England, at our February meeting at the home of Celia Van Arsdale Decker.

Following a custom of many years, our annual Christmas dinner was held at the home of Evelyn Partridge Bailey, with a charming musical program arranged by Harriet Hillier Burchill.

A discussion and demonstration of contemporary school music materials was given at the January meeting by Agnes Hemstreet Horton and Luella Howard Sheldon. A presentation of "Crokipo Suite" story and music will be given at the March meeting by Nell Walker Freeland at the home of Pauline Taylor Breddahl. April will find everyone traveling out to the Ingham Sanitarium for our annual program to entertain the patients there.

"Music in Present Day Greece" will be the topic in May when Juliet Alexopoulos will give highlights of many rich musical experiences during a recent two-year study in that country. The meeting will be held in the home of Majel Horning Schneider. A picnic in June, at which we will entertain our husbands and children, will close the year.—**ZELETTA WATERS PARSONS.**

**TOLEDO ALUMNAE CHAPTER'S** closing event for 1950 was a big holiday party between Christmas and New Year's for members and their husbands. At the suggestion of our own Bernice Oechsler we departed from our usual custom of giving a basket at Christmas and sent the *Saturday Evening Post* for one year, and some books, to Robert V. Shuff, superintendent of schools, Hoonah, Alaska. Because there is such a shortage of good reading material there this was very

△ △ *West Central Province* △ △

**MU GAMMA** held its rush party in early February at the home of Mrs. Floyd McLain. The program theme was "MU PHI Through the Years." We are proud of new pledges: Dorothy Armstrong, Lorraine Coats, Jo Ann Dunn, Bonnie Hammond, Helen Nelson, Marilyn Paul, Marion Urbach, Shirley Whitaker, and Kathleen Wilson.

The annual Mu Phi Epsilon scholarship award was presented to Eleanor Flanagan. The award, worth \$50, was presented by Mrs. Alice Beberstein, Alumnae chapter president, at a school of music convocation.

Members of Mu Gamma who have given their senior recitals are: Elinor Hanson, Jeanette Schweser, Jo Ann Hansen, and Mary Phillip.

We presented a joint recital with Delta Omicron, Sigma Alpha Iota, and Phi Mu Alpha Sinfonia. Our Founders' Day banquet and Christmas party were enjoyed by all. We are now making plans for formal initiation and a platter party.

The highlight in the spring was a joint musical with Delta Omicron and Sigma Alpha Iota. Senior girls from the Lincoln high schools who are interested and talented in music will be our guests. A coffee hour will follow the evening program.—**ELEANOR FLANAGIN.**

**MU THETA** initiated our fall pledges in January. They were: Mary Frances Adams, Anita Carleton, Shirley Van Cleave, Jean Evans, Joyce Gilstrap, Julia Hagood, Martha Keller, Lloyl Martin, Lorene Michalopolos and Barbara Oster. Following the initiation the pledges presented a program for the chapter members.

much appreciated. Just passing it along. Maybe some of the others have some books they would like to send.

In addition to the program already reported we are to have a book review of "Behind the Gold Curtain" by Mary Ellis Peltz (story of the Metropolitan Opera from 1853-1950), by Dorothy Keeney. Also, "The Trapp Family Singers" by Maria Augusta Trapp, will be reviewed.—**MARIE B. WHELAN.**

In February we had a rush tea followed by a short program. Six girls were pledged this last semester. To give scholastic assistance to music students, our chapter is offering tutorial service free of charge. In the halls we keep a box into which students may drop notices asking for aid. We ask that they give us a schedule of their classes, so that we may arrange a time for one of our members to help them.

Six Mu Theta's attended the Area Conference at T.C.U. in Forth Worth. The chapter report at the conference was given by the president, Martha Keller. Barbara Oster led a round-table discussion on "Attendance at Chapter Meetings." Bayla Sheinberg, Laura Cullen, Lorene Michalopolos and June Stokes participated in the visiting delegates' recital.

Some of our Chapter Honors are as follows: Orange Jackets, University Service organization: Pat Cater, June Stokes, Barbara Oster. June Stokes, pianist, and Jeanne Marie Widergren, vocalist, were presented in recitals in Scott Hall in Dallas this season as they were winners of the Dallas Civic Federation Contest last year. Elsie Dvorak will have the lead soprano role in "The Bartered Bride." President of MENC: Mary Frances Going. Austin Symphony Timpianist: Jo Ann Quillian.—**LAURA CULLEN.**

**MU KAPPA CHAPTER** introduced Mu Phi Epsilon to new students with an information booth placed under our bulletin board at the time of semester enrollment. Several members shared the responsibility of helping students. Schedules, bulletins, and other materials were



made available and members served as guides in the music building.

After installation, Wilda Griffin, associate professor of voice in Oklahoma University, entertained at a spaghetti supper. Our guest was our Province Governor, Mrs. Don Williams. We are grateful to alumnae and patrons who have invited us to have social meetings in their homes. The spirit of informality and the opportunity to know these friends has meant much to our chapter.

At present we're making big plans for rush week. We are having a "Jeans and Plaid Shirt" supper. Dorothy Young, second vice president, will present a puppet show, organize for a game of charades, and conclude with a group "sing."  
—MARY RUTH McCULLEY, *Historian*.

**MU MU CHAPTER** is busily planning two recitals to be given during April. The first will be presented at the Fort Riley Military Hospital. The second, in conjunction with the Fine Arts Festival which is featured on the K.S.C. campus during that week. Music by contemporary American composers will be performed.

Mu Phi Epsilon is also well represented in other features of the festival. Joanne Frudden and Pat Glotzbach will sing solo parts in the opera, "Amelia Goes to the Ball," by Menotti and other members will be singing in the chorus.

The Chapter entertained girls eligible for membership in Mu Phi Epsilon at a rush party held before the Christmas holiday season. The decorations and refreshments were based on the holiday theme.

Corinne Holm presented her senior recital in February. Members of the Chapter ushered for the recital and will also usher at Joanne Frudden's recital May 18.

Patricia Hale Scoggan appeared in the one act opera, "The Telephone," by Menotti which was presented at the Kansas Music Education Association Convention in November, at Topeka, Kansas.

Hilda Grossman, Assistant Professor of Music, here at Kansas State, is taking a year's leave of absence from her duties to study in Chicago.

An affiliation service was held March 1, for Patricia Glotzbach and Margaret Nelson who have transferred from Xi

Chapter. The service was followed by a dinner at the apartment of the Chapter president, Mrs. Frank Mosier.

The Ways and Means Committee is busy on projects to raise money for the scholarship fund. The scholarship, awarded in the spring, is given to a musically outstanding senior girl who is planning to attend K.S.C.

On the campus, Mu Phi Epsilon is represented in many musical organizations. Included are the college band, A Capella Choir, the college civic orchestra, the Madrigal Singers, American Guild of Organists, and various smaller ensembles and groups.

Mu Mu Chapter is proud to have a larger membership this year than in previous years.

**MU RHO CHAPTER** celebrated Founders' Day with the annual banquet. The program was provided by alumnae and actives. Also, in November Mu Rho presented a joint recital with Sigma Alpha Iota and Phi Mu Alpha. Outstanding on the program which included vocal solos and duets, and piano selections, were a trumpet trio, a brass ensemble and a choir made up of members from the three groups. It was directed by Roger D. Fee, member of Phi Mu Alpha. Mu Rho girls taking part were: Florence Blumenthal, Joan Howie, Beverly Bauer, Margie Clowes, Greta Lea Ferris and pledges: Madeline Stierwalt, Mary Ruth Kelly and Shirley Harkness.

At the annual Associated Women Students' banquet several Mu Rho girls were awarded honors. Joan Howie was honored for holding a straight "A" average. Only this fall Joan became a member of the Denver Symphony Orchestra under the direction of Saul Caston. She plays violin and is a sophomore at Denver University. Betty Hoyt was awarded the Georgia Crowell Memorial Award as the outstanding junior woman on campus.

In February the three groups mentioned above presented a musicale. These are held in Denver University's new student union, and tea and cookies are served following the program.—GRETA LEA FERRIS, *Historian*.

**MU CHI CHAPTER**—Ruth Rankin Rutherford, pianist, and Louise Bote-fuhr, mezzo soprano, accompanied by

Paul Vellucci, presented a program for the joint meeting of Sigma Alpha Iota and Mu Phi Epsilon on March 12. Ruth, Assistant Professor of piano at S.M.U., is a graduate of Julliard Graduate School. Her teachers included Olga Samaroff, Ernest Hutcheson, Rubin Goldmark, Hans Letz and Feliz Salmond. She has been soloist with the Julliard Orchestra under Albert Stoessel, and the Dallas Orchestra under Fritz Fall and Paul van Katwijk. She was, also, soloist with the National Radio Music Week.

Mu Chi members attended the state area conference in Ft. Worth where we received many new ideas about pledge activities, public relations and money-making projects.

Nine pledges were initiated in March. Another Piano Achievement Clinic will be held in December, 1951. On Founders' Day fourteen new initiates were honored. A tea honoring prospective members was given in November by Mu Chi and members of the Dallas Alumnae Chapter. At Christmas Mu Chi and Phi Mu Alpha entertained the Music School and faculty with an open house. The Christmas tree traditionally decorated by Mu Chi Chapter contributed to the holiday atmosphere of the music building.

In January, Donna O'Steen, Gretchen Cherry and Mildred Beck, pianists; Pat Norvell, Shirley Walker and Alice Nell Oughton, vocalists, presented a program for the alumnae chapter meeting. Donna also presented a recital in the Dallas Fine Arts Museum in March. Presented in solo recitals this year have been: Pat Norvell, Pat Hill, Flora Stafford, Alice Nell Oughton, Mary Ann Smith, Mildred Beck, Gretchen Cherry, Mary Elizabeth Moore, Martha Jo Smith, Dorothy Weaver, Dorothy Shelton and Shirley Walker.—MILDRED BECK, *Historian*.

**PHI ZETA CHAPTER** has now elected its officers for the ensuing year and is busy getting the various activities under way. Our new officers are: Everly Wissink, president; Sally Nissen, vice president; Vyonne Oskvig, recording secretary; Marcella Carlson, corresponding secretary; Mary Claire Gunderson, treasurer; Virginia Booth, warden; Mary

Anne Rasmusson, historian; and Shirleen Nystedt, chaplain.

The new pledges are Iris Lintner, Alma Rexwinkle, Aileen Lindquist, Patricia Carpenter, Sally Blake, Malvina Tott, Anamae Koole, Marjorie Gasser, and Beverly Kinsey.

Plans are in the making for a Silver Tea. Our intentions are to invite the music lovers of Sioux City for whom we shall present an ensemble recital. A tea will follow. In this way we hope to raise money for starting a permanent library of ensemble music for Phi Zeta Chapter.

The coming of spring means it is time for the senior recitals. Those who are practicing diligently for this event are Doris Leivstad, Beverly Spielman, Jeanne Cramer, Nelda Hildreth, Carol Rutledge, and Evelyn Perrin.

The discussion of how to make our meetings more profitable and unique has been taking place at our last meetings. We have decided to have a listening lesson one Tuesday night of the month. Another night is to be spent by asking faculty members to perform for us. Plans are to invite one or two teachers at a time and have them present an hour program. Through this we hope to enrich our musical experience and strengthen our chapter of Mu Phi Epsilon.—MARY ANNE RASMUSSON, *Historian*.

**PHI IOTA CHAPTER** entertained at a reception for Frances Yeend, after her concert at the college in January. North Lounge of Fjelstad Hall was beautifully decorated with ferns, flowers, and candles, and the tea table carried out Mu Phi colors. Musical friends from the three colleges, Fargo, and Moorhead, were our guests. Hildur Shaw was in charge of arrangements which always insures a most successful affair.

January 27 many of the girls leave on a concert tour with the Concordia Choir to the West coast. Arlene Buckneberg, a Phi Iota, is soprano soloist. Thelma Halverson, voice teacher, will be faculty representative.

Phi Iota raised almost one hundred dollars at our Rummage Sale in December. This money is used for scholarships which are given to high-ranking students at commencement time.

In March we will give our annual Music in Hospital concert. This is al-



ways eagerly looked forward to by the public and has proven to be an excellent way of raising money for such a worthy project.

Among other activities on the campus will be the usual round of junior and senior recitals given by members. Our sorority is also well represented in the Fargo-Moorhead Symphony Orchestra. The latter assisted in a performance of the "Messiah" given recently by the choruses of Fargo and Moorhead. This community thrives on music, and we as Mu Phi's, are happy we can contribute.—THELMA HALVERSON, *Historian*.

**PHI XI CHAPTER** has had many varied activities this year. Wanda Nelson, a graduate student from Brenham, Texas, was one of the soprano soloists in the presentation of "The Messiah" in December, which is given annually by the Baylor University School of Music.

Wanda, Betty Sue Beard, our vice president; Dorothy Hunt, chaplain; and Miriam Nethery, corresponding secretary, will present their senior recitals this spring. Miriam was also soprano soloist in "The Messiah," and in March was soloist in the Brahms "Requiem." Ann Northum was one of the alto soloists in the Mozart "Requiem" given in November and in "The Messiah."

Members of our chapter who are in the Baylor Symphony Orchestra include: Joan Riffey, Milley Harwell, Janey Aiken, Shirley Ward, Sarah Starnes and Martha Reid Davenport.

We presented a musical program at the home of our patrons, Mr. and Mrs. Barney Garrett.—MARY JOE EDWARDS, *Historian*.

**EPSILON EPSILON CHAPTER** was convention host to the Texas State Convention of Mu Phi Epsilon held March 3 and 4 at Texas Christian University in Fort Worth. Olive Galloway Williams, National Third Vice President and Province Governor of West Central Province, was our Convention Guest.

Registration began at 2 p.m., March 3. Chapters present were Mu Theta, Phi Tau, Mu Chi and our own Epsilon Epsilon. Phi Xi was unable to send delegates. Thirty-seven girls registered.

The opening session was held at 3:30 in the Green Room of the Fine Arts Building. Mrs. Williams presided. Chap-

ter reports were given by the president of each chapter. The reports revealed progress that has been made in Texas during the past year. A letter, received from the National President, was read concerning the establishment of new chapters at other Texas colleges. A very lively and inspiring round-table discussion followed, led by Mrs. Williams. Among the topics discussed were chapter relations, attendance at chapter meetings, charges for initiation, activities for pledges, and public relations.

During this period everyone participated by telling of the various activities of her own chapter. Many suggestions were given on improvement of the meetings, money-raising projects, and publicity as well as other topics. Especially interesting were the reports that concerned the activities of the pledges. Because of the ready response of each girl, every chapter benefited by this exchange of ideas. Light refreshments were served.

At 6:30 an informal dinner was served on the campus where everyone became better acquainted.

On Saturday evening, after a welcoming speech by Dean T. Smith McCorkle of the School of Fine Arts of T.C.U., the hostess chapter presented a recital for the convention delegates and invited guests. Following the program, Mrs. Williams gave an address on the aims and ideals of Mu Phi Epsilon.

A breakfast was served the next morning at the home of Mrs. T. S. McCorkle, our faculty sponsor. Afterwards a program was presented by visiting delegates.

The Convention was adjourned after the program with plans of continued progress for Mu Phi Epsilon in Texas. We hope to establish chapters in other colleges and universities in our state. Next year the meeting will be held at Baylor University in Waco, Texas.

In January we presented a variety show entitled, "A Rinkey-Dink Turns to Fantasy." We made a profit of \$77.00. Other money-making projects included selling sandwiches in the dormitories by the pledges. This helped them earn \$5.00 each, which was required. In February six pledges were initiated. In March new officers were installed. The retiring president, Frances Halstead, received a silver dish necklace with MPE

inscribed on it. Plans for the future include a dessert party in March honoring the prospective pledges. Another activity is our annual dinner with Phi Mu Alpha Sinfonia.—LOUISE DEAIGH, *Historian*.

**EPSILON MU** in Salt Lake City began the New Year with four new members: Dwan Jacobsen, Marian Bradshaw, Jo Ann Hunsaker and Gladys Gladstone, initiated December 3. At their initiation Rachel Isbell, former president of the Denver Alumnae chapter, was our charming guest. We are grateful to her for the valuable ideas and suggestions that she gave us.

Three guest speakers and musicians, all faculty members of the University music department, have highlighted our meetings this quarter. Dr. David Shand led a group discussion on the importance of music in our daily lives, illustrating with recorded music. Mr. Reid Nibley thrilled those in attendance with his interpretation of the "Emperor Concerto" by Beethoven. Dr. Helen Folland assisted him at the second piano. At our final meeting in February, with her wit and charm, Emma Lucy Gates Bowen, told us of her experiences in opera.

New officers elected are: Dwan Jacobsen, president; Noriene Rogers, vice president; Marian Bradshaw, recording secretary; Jo Ann Hunsaker, corresponding secretary, Norm McCleod, treasurer; Norma Lee Madsen, historian, and Geraldine Mariani, chorister.

The chapter is making plans for a fifteen minute radio program of music through our spring quarter.

At the Jewish Music Festival presented by the Salt Lake United Jewish Council in February three Epsilon Nu girls appeared. They were: Sally Peck, violist, Gladys Gladstone, pianist, and Norma Lee Madsen, violinist.

At the Chamber Music Festival presented by the Department of Music at the University of Utah several of our members performed. They were Norma Lee, Sally, Norma and Helen Folland. Dr. Feri Roth of the world-famous Roth Quartet was director.

Norma Lee, Sally and Norma also play with the University Symphony Orchestra.

A committee was selected to make

arrangements for the dinner that Epsilon Mu will sponsor for all Mu Phis who attend the National Music Festival, presented by the National Federation of Music Clubs this coming May 13 in Salt Lake City.—JO ANN HUNSAKER.

**DENVER ALUMNAE CHAPTER** honored Alec Templeton at a reception following his performance at the Park of the Red Rocks last summer. Mrs. Templeton, Saul Caston, conductor of the Denver Symphony Orchestra, and Mrs. Caston were honored guests at the gala reception, which was held at the home of Mildred Kyffin.

Our alumnae members joined with the Mu Rho chapter for our Founders' Day Banquet at the Argonaut Hotel. The program consisted of a clarinet solo by Revea Carter, Mu Rho, piano selections by Gladys Kendall, and a vocal group sung by Violette McCarthy.

Compositions performed on our regular meetings this year have been primarily works of American composers. The March program is to be devoted to two piano compositions by American composers. Mu Rho members were special guests at our Christmas party held at the home of Irene Heppner. Emily Joy sang Christmas carols. Refreshments followed and a gift exchange.

Our April meeting was at the home of Sara Winters for our annual buffet supper, followed by a musical program. On April 22 the Denver Alumnae chapter joined with the Mu Rho chapter as hostesses at a Silver Tea and Musicale at the home of Katharine Perenyi. The proceeds from this annual musicale were used as a Scholarship Fund to be presented to the outstanding Mu Rho junior at the University of Denver's Honors Convocation Day held in May.—OLLIE JANE STOHLMAN.

**KANSAS CITY ALUMNAE CHAPTER** has had a very interesting and successful year. We have had three Morning Musicales in beautiful Edison Hall in October, December and February. Our February program, "Music of Latin Countries" was most colorful and fascinating. We were very proud of the performers: Julianne McLean, pianist, Vera Jean Douthat-Whitlow, soprano and guest artist, Pasquale Ficarra, cellist, with her accompanist, Pearl Roemer Kelly; and



Virginia Burke and Pauline Houts, duopianists.

For such successful programs we are indebted to Rae Swanson, business manager, Maxine Frye, Ada Belle Spencer and Pearl Roemer Kelly and Virginia Torrance.

Our last large function this year is to be a Garden Musicale and Tea in June at the home of Pearl Elliott. Appearing on the program will be Della Border, cellist, Vivian Menees and Bobby Menees, harpists, Roberta Maness, Mu Delta, voice, and a group in folk dances.—NINA GRIFFITH, *Historian*.

**LINCOLN ALUMNAE CHAPTER** opened its season with a luncheon held at the Cornhusker Hotel. Patronesses and members of Mu Gamma Chapter were invited for the gala occasion, for we were honoring Mu Phi Epsilon's National Third Vice President, Olive Williams, our own former president and delegate to National Convention. We are very proud that the honor has come to Olive, who is so richly deserving of this trust. Mu Gamma Chapter girls were warmly congratulated for having won the National Achievement Award at our Convention in Seattle, Washington. Sharing honors and receiving Recognition Pins for their noble and untiring effort in behalf of Mu Gamma Chapter as well as the Alumnae Chapter were Frances Hallett and Charma Davies Lepke. Charma and her husband, Rev. John Lepke, are now in a Mission Station in South Africa and we know that wherever Charma is, there will be Music!

Under the capable and gracious leadership of our president, Alice Bieberstein, we are having a series of interesting meetings and programs presented by our members and guest artists. A fine, illustrated lecture was given by Irma Dammé, who traveled in Europe with her husband for several weeks in the autumn. At another meeting Marjorie Shanafelt, our excellent harpist, puppeteer and assistant to the director of the Museum at the University of Nebraska, gave an interesting résumé of her trip by freighter from California to Denmark with a former member of our chapter, Sarah Apperson Volf. Sarah has recently moved to Copenhagen, Denmark,

where her husband, a prominent physicist, is now in business.

We are very happy to welcome two new members, Marilyn Schultz and Lois Talbot Gilbert. Marilyn, newly appointed to the piano faculty at the University of Nebraska, came from Upsilon Chapter at Cincinnati Conservatory. She is faculty advisor to Mu Gamma Chapter. Her beautiful playing has added much to our programs. Lois, wife of Dale Gilbert, the head of the Voice Department at Doane College, is a valuable addition to our group. The Gilberts are graduates of Northwestern University. Lois accompanies her husband at his many recitals.

Beth Miller Harrod leads a busy life, commuting between her piano studios in Denver, Lincoln and Omaha. She was married to Col. Charlton Harrod in Denver last September and has since appeared in concert in Times Hall, New York City, Kimball Hall, Chicago, and other places.

Adelaide Spurgin has had a busy schedule, singing on many programs and directing the choirs at the First Methodist Church, of this city.

Three of our members are on the Board of Directors of the Lincoln Symphony Orchestra Association, Frances Hallett, Beth Harrod and Margaret Lindgren.

At a January student recital at the School of Music our annual scholarship was awarded to Eleanor Flanagan, violinist from Mu Gamma Chapter. Greetings and best wishes to all Mu Phis.—MARGARET LINDGREN, *Historian*.

**OKLAHOMA CITY ALUMNAE CHAPTER** met with Genevieve Hodder in January, Anne Roberts and Helen Mitchell of Guthrie being assistant hostesses. The musical program was by Ruth Petty, violinist, accompanied by Ruby Payte, and Milicent Aiken, soprano, accompanied by Gladys Johnston.

In February S.A.I. entertained us at our annual joint meeting. After a cover dish supper we separated and each held a short business meeting, then all reassembled for a music program in the living room. Representing Mu Phi were Jan Goethals, dramatic soprano, and Carolyn Hicks, pianist. Jan has recently won first place in a contest sponsored by the Wichita Falls Symphony Orchestra

and will appear with them April 30. Anne Roberts won second place and in view of the unusually rigid requirements and competition we feel very proud that the two top honors went to Mu Phi's.

From March seventh to tenth there will be a music teachers convention here and we plan to have a breakfast for all visiting members.—MARY HALEY, *Historian*.

**WICHITA ALUMNAE CHAPTER** is closing a profitable, busy and interesting year under the guidance of Ardeen Casado (Mrs. Antonio) as president. \$155.00 is in the treasury from the rummage sale directed by Peg Decker (Mrs. Harold).

Bonnie Moltz of Phi Pi Chapter, Wichita University, was winner of the Senior Applied Music Scholarship awarded for the second semester. The fall scholarship auditions will be held in April. Programs have been given during the winter months at the Masonic Home and Huston Home for the Aged planned by Marguerite Hopkins (Mrs. John).

In the Wichita Symphony Orchestra we have Beatrice Sanford Pease (Mrs. Carlos) violin; Carol Schowalter Holman (Mrs. Elton M.) flute; Lois Ayres Gordon (Mrs. Russell E.) cello; Mary Bickfor (Mrs. Christy R.) harp, and Marguerite Campbell Elliott (Mrs. Robert N., Jr.) cello, piano, celesta.

Marguerite Smith Miller (Mrs. Luther E.), Beatrice Sanford Pease, Inez Pratt J. Jamison, Carol Schowalter Holman and Thelma Hughes Coombs all are on the music faculty of Wichita University while Frances Shuler Taylor, Geraldine Gazt and Lois Ayres Gordon are on the music faculty of Friends' University.

△ △

*Pacific Province*

△ △

**NU CHAPTER** at the University of Oregon has been enjoying a new music building since the fall of 1949. Its modern-lighted and sound-proofed studios and class rooms are much appreciated by all the students and faculty.

On December 10 our chapter worked with two other organizations in the presentation of an all musical Christmas program. Decorations included three huge Christmas trees hung with sleet,

Beatrice Sanford Pease is a member of the Wichita String Quartet and the Wichita String Trio. Beatrice was a member of Louis Persinger's Master Class at Colorado College, where she played the Franc Sonata for a special faculty recital.

Thelma Hughes Coombs acted as accompanist for two artists Lara Browning and Shirley Russell appearing before the Saturday Afternoon Musical Club. Thelma toured with Lara Browning on her midwest concert engagements. Mary Lou Cervania directs the Mother Singers' Chorus.

Christa Fisher, Margaret Motter and Lois Ayres Gordon all are Minister of Music, Christa at St. Paul's Methodist; Margaret, Grace Methodist; and Lois at First United Presbyterian churches.

Saturday afternoon Musical Club will have Lois Ayres Gordon as its president next season. This past season Lois has been Vice President, Peg Decker, Recording Secretary; Ardeen Casado, Treasurer; Marguerite Miller, Board Member, and Margaret Claire Motter, Chairman for the Anna Scott Gray Scholarship.

Four new members have affiliated with us: Joe Leavenson (Mrs. Davis); Marguerite Miller (Mrs. Luther); Mary Frances Titus Graham (Mrs. Merrill), all from Phi Pi. Esther Audrey Cash (Mrs. A. B.) from Mu Mu Kansas State.

Wanda Anderson and Christa Fisher received their Master of Music Education degrees from Northwestern University. Lois Gordon is on the National Alumnae Board of Mu Phi Epsilon. In May we entertain with a guest night at the country home of Dr. and Mrs. N. C. Sevin, and Mrs. Sevin being a patroness.

and special lighting effects. Our members participated in the chorus, brass ensemble, string ensemble, and others helped with decorations and special arrangements.

Our local alumnae group gave their annual concert in February.

Seven of our senior girls are presenting their recitals this year. In February seven of our chapter attended a conference at Lewis and Clark College in Port-



land. Ellen Liebe and Joyce Everson presented a Hindemith sonata for violin and piano. The other five girls attending were Dorothy Gavig, Barbara Fulton, Mary Swigart, La Verne Watts, and Beverly Goheen. They reported the meetings as inspirational. Our Pacific Province Governor, Eleanor Hale Wilson, was there.

In cooperation with two other musical organizations, members of our chapter will take part in a concert of American music to be given March 11.—MARY FRANCES ROBINSON, *Historian*.

TAU CHAPTER wishes to announce the result of the Frances Dickey Memorial Scholarship competition which was held at the Founders' Day Celebration. Each year Seattle Alumnae Chapter awards a year's music instruction fee to a Tau girl actively studying applied music at the University of Washington. This year two scholarships were awarded, one to Henrietta Mastenbrook, graduate student in piano, and the other to Dawn Bliss, cellist and senior.

In January eleven girls were initiated at the home of Adelle Ratcliffe, Tau alumnae. We are very proud of Virginia Johnson, graduate voice student, who has been selected by the Rotary Club of Torrington, Wyoming, and part of Colorado and Western Nebraska, as candidate for one of the Rotary International Fellowships to study music abroad.—SHIRLEY LOCKER.

MU BETA CHAPTER'S social activities have been many and varied. One of the first functions was an informal party honoring underclassmen interested in music, given in conjunction with Phi Mu Alpha in December. In January we gave a tea for our twenty-seven patronesses. The program was furnished by the new initiates. A coffee hour and reception was planned for Vivian Della Chiesa on February 28, but was cancelled due to her illness. We presented her with a bouquet during the performance and after the concert she graciously received the members of our chapter for an informal chat. Our service project for the college was decorating for the Christmas Vespers at Bryan Hall.

Eight pledges were initiated in December. New officers were elected and installation was February 13 at the Pull-

man home of Mrs. Nasmyth, former adviser, who is at present living at San Gabriel, California. The new officers are: President, Joan Chisholm; Vice President, Nancy Scoles; Recording Secretary, Barbara Kitlar; Corresponding Secretary, Lenna Deutsch; Treasurer, Billie Nicholls; Assistant Treasurer and Chorister, Barbara Juneau; Historian, Lucille Seger; and Warden and Chaplain, Alice Park.

Alumnae members of Mu Beta will be sorry to hear that Jackie Jermy (Mrs. Robert Barns) was fatally injured in an automobile accident October 28, 1950.

Marilyn Stocker, our past president, gave her senior piano recital February 28. Sylvia-Lou Newton, a graduate student, accompanied Mr. Lloyd Linder, voice instructor at the college, in a song recital, January 14.—LUCILLE SEGER.

MU ETA CHAPTER will be selling homemade candy at the College of the Pacific's annual Band Frolic during the second week of March. The proceeds from this candy sale go towards a scholarship for a music major who will be entering her Junior year next fall at the Conservatory.

President Joyce Heaton relinquishes her gavel to newly elected June Hunt on night of March 11 at which time new officers will be formally installed. Nadine Stuhlmuller, Marilyn Graffis, and Betty Howard, three of the chapter's outstanding musicians, will present selections for the evening's entertainment.

Mrs. Ellis Harbert, our adviser and head of the Conservatory's Musical Therapy Department, supervises therapy work at the State Hospital in Stockton. Members of Mu Eta Chapter are going to present a musical program at the Hospital around the first of May.

Ten members have just returned from the College of Pacific A Cappella annual choir tour which included ten days and traveling through four states.

PHI NU CHAPTER—On Friday, February 9, we held our initiation at the home of Ramona Mathewson, alumnae representative. The initiates are Ruth Lauren, cellist; Diane Jasin, pianist; and Carolyn Matthias, organist. We were delighted to have as our guests Esther Funk, president of the Beverly Hills Alumnae chapter, and Martha Day, Los Angeles Alumnae treasurer.

Margaret Walker, past National President, honored us with her presence at our Rush Tea, held in Kerckhoff Hall, Thursday, February 22. This was followed by a luncheon on Thursday, March 1, honoring the rushees, held at Truman's Restaurant in Westwood Village.

Results of the elections which took place March 2 were as follows: President, Lorraine Eckardt, winner of MPE Performance Contest; First Vice President, Pat Stroman; Second Vice President, Eileen Schiff; Recording Secretary, Mary Black, Corresponding Secretary, Haruko Hokama; Treasurer, Carolyn Matthias; Warden, Shirley DeVries; Chaplain, Mary Bledsoe; Chorister, Avis Lange, and Historian, Ann Brunner.

We are happy to announce that our Annual Royce Hall Concert will be given on Friday, March 16. The program will be composed predominantly of contemporary works and includes two first performances. They are "Before Dawn" by Henry Leland Clarke, and "Grapes" by Boris Kremenliev. Clarence Mader, another local composer, is also being represented on the program by two organ compositions, to be played by his pupil, Elfrieda Dolch.

On the agenda for the future are our Performance Contest, sponsored by the Los Angeles Alumnae, and our Annual Patrons' and Patroness' party.

—CAROLYN J. REED, *Historian*.

EPSILON DELTA'S initiates are: Rebecca Cockrum, Jean Compton, Helen Gale, Verna Hagen, Velna Hurley, Barbara Heddon and Claire Hodgkins.

Pledges are: Delores Menstell, Virginia Norman, Janet Brande and Winifred Garlock.

Louis Kaufman, noted violinist, and his accompanist-wife, Annette, visited the Lewis and Clark College campus March 12 and 13, meeting with music students, leading seminars, and presenting an evening concert in the campus theater. A reception honoring the Kaufmans was given by members of Epsilon Delta chapter following the concert. The large drawing room of the new Women's Dormitory was the scene of the tea and reception to which friends of the honored guests and interested patrons were invited.

EPSILON ETA CHAPTER—Five girls were pledged in a candlelight cere-

mony in March. They were Betty Glen Barger, Lucy Gregg, Kay Ritter, Hettie Lu Wilson and Tommie Wilson. Following the service the members and their adviser, Margaret Kaye Hill, entertained with a dinner.

An informal musical was held later in the evening by members of our chapter. Following the program a reception was held for the Music faculty members, all the pledges, members of Phi Mu Alpha Sinfonia and other guests.—JO CLAIRE KNOLL, *Historian*.

EPSILON IOTA CHAPTER tells with heavy hearts of the passing of one of its greatest friends, our beloved patron, and the President of our college, Dr. Walter W. Isle. As a patron of the arts, and staunch supporter of all of the musical activities of Eastern Washington College, Dr. Isle's passing has left an emptiness in the life of our school not to be easily replaced. On March 1 a memorial convocation was held in his honor, and several of our Epsilon Iota girls were participants. Altamae Sims, Kay Foes and others helped to make the memorial a beautiful tribute to a beloved man.

On November 27 the Spokane Philharmonic Orchestra presented Burdette Squire Smith, harpist, and Georgiana Wallace Plowman, flautist, in the "Concerto for Flute and Harp in C" by Mozart. A lovely reception honoring the soloist followed the concert. Epsilon Iota is proud of Georgiana.—CAROL BULLOCK, *Historian*.

BEVERLY HILLS ALUMNAE CHAPTER has been "knee-deep" in various activities. Christmas was celebrated early in December with a Chapter birthday party for guests at the beautiful home of our President, Esther Funk. A program innovation was a choral group of members under the direction of Sue Campbell. We are so sorry to be losing Sue who is moving to the state capital, Sacramento. "Music in Correctional Institutions" was the unusual topic for the January meeting with Billy Lindquist in Westwood. Tex-Rozelle Brown told of the first year of teaching music in an institution in Los Angeles for difficult girls. Everyone admired her attractive personal manner and her desire to help these girls from unfortunate homes. Ruth



Plough gave piano numbers and Thyra Snyder sang. In February "New Phases in Music Education" were discussed by a symposium with Helen Dill, Chairman, speaking on "Music Films"; Marjorie McFarlin on "Artistic Teaching Bulletin-Boards"; Marie Erhart on "Wire-Recorders"; and Betty Estes on "Elementary String Classes." It was our first visit to the attractive new home of LaVerle Caligiuri. Very soon the Chapter will spend an evening at the Neighborhood Music School for a business meeting, and a program given by young east side students of the School. This should prove a good mental spring-board for our annual Benefit on April 17, when we take over the audience side of a theater in Westwood for a play. Proceeds will go towards our philanthropies, one of which being this very fine Neighborhood Music School, over which Mu Phi Epsilon Anina Mueller presides so capably.—HELEN C. DILL.

**PORTLAND ALUMNAE CHAPTER** and musical Portland are very closely bound together because of our participation in so many of the established activities of our various professions. For example, if attending a Symphony concert, we find Jane O'Reilly and Rulhelbert Wolfenden Holt in the viola section and Carol Canfield playing violincello.

In the Portland Chamber Orchestra, we see numerous sisters, including Claire Hodgkins Walker, concert mistress, Hope Jaquith and Olive Oldfield, violins; Grace Hoyt and Donna Jane Macklin, second violins; Patricia Steen, principal, Helen Brunner and Muriel Fitts, viola; Arlie Dale Hull, principal, and Katie Potter Frey, cello; Edith Kilbuck, piano. Several of these are members of Epsilon Delta.

The Portland Symphonic Choir lists on its teaching staff, Jeanne Scott, voice, and Director of Carolers, and Danae Livesay, French. Edith Woody sings in the choir and in the Chorale group are Billie Ryburn, Danae Livesay and Shirley Bender.

Our alumnae chapter is an associate member of the Portland Symphonic Choir and also of the Portland Chamber orchestra.

In local schools of higher education, the faculty includes Margaret Notz

Steinmetz, Carroll Townsend and Maud Bohlman at Lewis and Clark College. Aurora Potter Underwood is an instructor of piano at the University of Portland.

The public schools include several Mu Phi on their teaching staffs—in high schools are: Jean Acorn Vancil, Danae Livesay, Ariss Englund, Bertha MacDougall, Harriett Baldwin and Helen Brunner. Grade schools include: Belva-June Mayor, Lillian Acorn Ferguson, Catherine True and Marjorie Means. Joanna James Ellis has classes at the Holy Child Academy. Patricia Steen is on the faculty at St. Helen's Hall.

Church organists include: Ella May Howard, Rose City Methodist; Sylvia Troch Bush, Central Presbyterian, and Jean Harper, Eighth Church of Christ, Scientist. These three and Oralie Bybee are also active members of the Oregon chapter, American Guild of Organists.

Many of our girls are prominent in the private teaching profession—to mention a few: Lillian Pettibone, Alice Bogardus, Jean Williams, Nellie Tholen, Maude Ross Sardam, and Louise Smith.

A capacity crowd at our Fashion Show and Tea March 3 at Evelyn Gibson's Gown Shop made us very happy, because a new scholarship fund will be created by the proceeds from this project. Edwina Anderson and Margaret Hudson were responsible for the success of the afternoon.

The meeting in May will be at the home of Mrs. E. V. Creed, president of the patroness group of Epsilon Delta. Graduating members of Epsilon Delta will present the program.—JEAN HARPER, *Historian*.

**THE SAN DIEGO ALUMNAE CLUB** held a luncheon meeting in January. Ruth Christensen, soprano, and Josephine Hutchinson, composer, gave us a charming program of Josephine's songs. The White Elephant sale for the benefit of the Sterling Memorial Fund was a nice success. We were happy to welcome Margaret Forbes, violinist, from the Seattle Alumnae chapter.

Grace McCollum Small will be in charge of our Mu Phi registry table when the Western Division of the Music Educators' National Convention meets here March 18 to 21. We are having a lunch-

con meeting on the 19th and are looking forward to meeting members attending the Convention.

Through our National office we have heard that Mari Elizabeth Wise, Kappa, and Ann Elizabeth Iverson, Mu Zeta, are in our midst. Our ever-watchful membership chairman, Bess Bangert, has been in touch with them, as well as with Kay Kellog, Mu Nu, and we anticipate that these three sisters will affiliate with us soon.

Mrs. Melhorn will sing a group of our Josephine Hutchinson's songs, with the composer at the piano, Sunday afternoon, March 11, at Balboa University. Louise Milner, pianist-accompanist, is appearing soon on an Army-Navy program at the YMCA.—EDITH TREWARTH DORSEY, *Historian*.

**SAN FRANCISCO ALUMNAE CHAPTER**—With the yellow blossoms of the acacia trees brightening my window I will write this Spring newsletter giving a résumé of our year's meetings with Marcelle Vernazza, president, and Helena Redewill, vice president and program chairman. In September we met at the home of Senta Titsworth in San Francisco, and Christine McCann, violinist, played a group of solos accompanied by Ann McClelland. This was followed by the wonderful convention report by Marcelle. In October Lois Dangremond Flenner was hostess in her new home in Orinda, and the program was given by Elizabeth Camp, pianist, and Andrea Johansen, contralto, accompanied by Juanita Lawson. Dessert luncheon preceded the musicale, and business afterwards.

The Founders' Day musicale was held at the home of Madame Antonio di Grassi, patroness, and was given by Joyce Davis, soprano; Alice Miller, pianist; and Signor di Grassi, violinist. Alice Miller was hostess in January. Following the dessert luncheon the program was given by Lois Flenner, violinist, Audrey Ammons, soprano, accompanied by Symeta Kuper, and June Sanders who gave a very interesting talk on her months spent in Europe last year. In February the chapter's meeting was cancelled in order that the members might attend the installation of the San Jose Alumnae Chapter on February 18.

The March regular meeting was held at the home of Juanita Lawson. Symeta Kuper, pianist, Frederica Downing, contralto, and Dwight and Harriet Thornburg, duo-pianists, gave the program.

A Guest Day was held in April at the Santa Clara Ave. Methodist Church in Alameda where Austin and Eileen Coggin gave a program of piano and organ numbers, assisted by Julia Phillips, soprano, and Frances Robinson, violist. The May musicale, at the home of Ruth Cook in Berkeley, had the following members scheduled to appear: Nellie Alexander, pianist, Marjorie Sherman, soprano, Margaret Seagrave, violinist, and Alice Miller, pianist. The installation of new officers is also scheduled. The year is to end with a family picnic in June at the home of Marjorie Sherman in Los Altos. Virginia Schau and Senta Titsworth will give a program assisted by Mu Phi children.—LOIS DANGREMOND FLENNER, *Historian*.

**SEATTLE ALUMNAE CHAPTER** has had a year fired with enthusiasm, sparked by the National Convention and the thrill of having it here in Seattle.

Our annual scholarship tryouts were held at a joint meeting with the girls of Tau Chapter at a Sunday evening fireside. It is a joy to hear the talents of the active chapter members.

Our meeting in January was a joint one with Sigma Alpha Iota. Gwendolyn Mines Remy, pianist, and Nona Zimmerman, contralto, contributed our part of the program.

Our last meeting was highlighted by a program of two-piano music. Because of the facilities provided in the recital hall of the new Music Building on the University of Washington campus, a program of this type was possible for one of our regular monthly meetings for the first time. The two teams who performed were Ruth De Witt Peters and Ruth Wilson Anderson and Miss Janet Adams and Billie McCleary Jones. Dr. Kathleen Munro was the speaker of the evening.

Faculty members of Mu Phi Epsilon were hostesses. These were Eileen Risegari, Kathleen Munro, Irene Bostwick, Helga Lind, Catherine Adams Root, Dorothy Cadzow, Helen Hall, Karla Kantner, Hazel Kinscella, Claire Peterson,



Alice Sorenson, Miriam Terry, Florence Bergh Wilson, Edith Woodcock and Janet Adams.—BILLIE McCLEARY JONES, *Historian*.

**STOCKTON ALUMNAE CHAPTER** had an inspiring and delightful program of modern dance for its February meeting. Led by June Hunt of our active chapter, Mu Eta, five dancers entertained with dances to ideas given by the audience and set to impromptu music cleverly played by Scott Coulter.

For the March 7 meeting the chapter met in Modesto at the home of Pauline Cruickshank and made definite plans for raising money for our depleted treasury. A nominating committee was appointed to report at the April meeting with a slate of officers for election and installation in May.—LAURA LEE PADDOCK, *Historian*.

**TACOMA ALUMNAE CHAPTER** started its fall activities with an enthusiastic meeting at the Town House apartment home of Blanche Hill Evans. The report on Convention was especially interesting for we were installed as an alumnae chapter on the Friday of convention week. For our October meeting, the program chairman, Elizabeth Rhodes Kennedy, instructor at the College of Puget Sound, presented Mr. Paul Revitt, violinist, as the evening soloist. He is also on the Puget Sound faculty, and Elizabeth accompanied him. November was a busy month with three special affairs: (1) Mu Phi Epsilon auditions for outstanding high school girl musicians on November 4, (2) Benefit recital given by Margaret Myles, contralto, and assisting artist Gordon Epperson, 'cellist, on November 10 at Weyerhaeuser Hall of the YWCA, and (3) Founders' Day Banquet, with our husbands as guests, at Daniels' Cafe in nearby Puyallup. The latter program presented Carol Reed Travis and Marie Miller Fortier in piano duets, and a vocal trio composed of Eileen Van Aiken, Evelyn Eustace Voth and Katherine Peterson Gronen, with Marie Miller Fortier as accompanist. Esther Saager Jones and Mary Herbst Buchanan also gave interesting talks about Gad's Hill School and our national Mu Phi Epsilon contests.

Our next program came in January, when we had an opportunity to hear

three of our members who are organists for the first time. Joy Gunderson Patching, one of the soloists, invited us to the First Church of Christ, Scientist, Lakewood. Two other members also enjoyed by us were Evelyn Eustace Voth and Mary Herbst Buchanan.

February was also a feature month, for we entertained the Recognition Recital soloists at the lovely home of Gertrude Graves Martin on February 19. Our members who played for this evening were Carol Reed Travis, pianist, the vocal trio, and an instrumental group composed of VaLois Wahlgren, violinist; Elsie Berge, 'cellist; Ardis O'Neal Larson, pianist, and Virginia Washburn Morrison, clarinetist. The Recognition Recital was presented on February 27,

Interesting spring features ahead of us are the annual guest night which will be a review of and music from "La Traviata." Tacoma will have an opportunity to see Frances Yeend as Violetta on May 2 when the Tacoma Philharmonic presents the opera, and we felt the need of knowing more about it before seeing it.—MARIE MILLER FORTIER.

△ △ △

## We Point with Pride

(CONTINUED FROM PAGE 15)

Wesley Club and Kappa Phi. She has sung principal roles in University Opera Workshop productions and has been guest soloist with the University Symphony and the Clarion Male chorus. Last April she was chosen to sing in concert in Seattle with Igor Gorin, Metropolitan baritone, and she gave her second solo concert at the University in February.—SHIRLEY LOCKER.

△ △ △

## "Pat" Merriam

(CONTINUED FROM PAGE 14)

Our very best wishes to Pat Merriam of the Northwest, a member of Mu Phi Epsilon who is enjoying every minute she is developing good choral music.

# MU PHI EPSILON DIRECTORY

## Founders

DR. WINTHROP S. STERLING, *November 28, 1859-November 16, 1943*

ELIZABETH MATHIAS FUQUA, *deceased May 17, 1950*

## Honorary Advisory Board

ELIZABETH MATHIAS FUQUA (MRS. JOHN W.) (Deceased) .....	Alpha
MYRTAL PALMER LEACH (MRS. FRANK), 2 Messervy St., Salem, Mass. ....	Gamma
ELFRIDA LANGLOIS KENT (Deceased) .....	Delta
ALICE DAVIS BRADFORD PECK (MRS. ARTHUR), 40 Wilmuth Ave., Wyoming, Ohio .....	Alpha
ORA BETHUNE JOHNSON (MRS. J. F.) (Deceased) .....	Theta
MARY TOWSLY PFAU (MRS. WILLIAM) (Deceased) .....	Alpha
ROXIELETTIE TAYLOR YEATES (MRS. JOHN), 1119 Rumsey Ave., Cody, Wyo. ....	Theta
ANGELLA M. FOX (MRS. O. S.) (Deceased) .....	Iota Alpha
HARRIET THOMPSON WRIGHT (MRS. WILLIAM E.), 482 Glen Ave., Fresno, Calif. ....	Chi
DORIS BENSON (MRS. WALTER), Spikeswood Farm, Woodruff, Wisc. ....	Iota Alpha
PERSIS HEATON TRIMBLE (MRS. CHARLES M.) (Deceased) .....	Mu Alpha
LUCILLE EILERS BRETTSCHEIDER (MRS. AUGUST, JR.), 3426 Morrison Place, Clifton, Cincinnati, Ohio .....	Alpha
ORAH ASHLEY LAMKE (MRS. GEORGE W.), 1327 McCutcheon Road, Richmond Heights 17, Missouri .....	Delta
DOROTHY ELIZABETH PATON, Observatory Lodge, 1402 Washington Heights, Apt. 304, Ann Arbor, Mich. ....	Gamma
BERTHA MARRON KING (MRS. DANIEL P), MacPhail School of Music, Minneapolis, Minnesota .....	Mu Epsilon
ELIZABETH AYRES KIDD (MRS. A. E., JR.), New Trier High School, Winnetka, Illinois .....	Mu Xi
AVA COMIN CASE (MRS. LEE O.), School of Music, University of Michigan, Ann Arbor, Michigan .....	Gamma
MARGARETTE WIBLE WALKER, 2310 Scarff St., Los Angeles 7, Calif. ....	Mu Nu

## National Council—1950-52

<i>National President</i> —RUTH ROW CLUTCHER (MRS. JOHN), 21 Kent Road, Upper Darby, Pennsylvania .....	Omicron
<i>National First Vice-President</i> —ELEANOR E. HALE WILSON (MRS. P. RAYMOND), 2800-39th Avenue West, Seattle 99, Washington .....	Tau
<i>National Second Vice President</i> —ELVA B. McMULLEN GAMBLE (MRS. EUGENE E.), 9333 South Hamilton Avenue, Chicago 20, Illinois .....	Xi
<i>National Third Vice-President</i> —OLIVE E. GALLOWAY WILLIAMS (MRS. DON S.), 3035 South 44th Street, Lincoln 2, Nebraska .....	Xi
<i>National Editor</i> —GRAYCE KENT CLARK (MRS. ROY L.), 1616-46th Street, Des Moines, Iowa .....	Omega

## National Executive Office

*National Executive Secretary-Treasurer*—BERNICE S. OECHSLER (MRS. RALPH J.), 6604 Maplewood Avenue, Sylvania, Ohio .....

Epsilon



# National Departments

## ALUMNAE BOARD

- Alumnae Adviser*—OLIVE E. GALLOWAY WILLIAMS (Mrs. Don S.),  
*National Third Vice President*
- Atlantic Province*—  
Jessie Yuille Yon (Mrs. Charles), 335 Locust, Edgewood, Penn.  
Lola M. Miller Orr (Mrs. W. J. B.), 4400 Cathedral Ave., Washington 16, D. C.
- Great Lakes Province*—  
Sarah A. Vance Kilgour (Mrs. Raymond L.), 513 Oswego, Ann Arbor, Mich.  
Thelma M. Goldsword (Mrs. Norman), 3400 Hollister Road, Cleveland Heights 18, Ohio.
- East Central Province*—  
Ruth Cline Needham (Mrs. Dring D.), 6015 Waterbury Circle, Des Moines 12, Iowa.  
Pauline J. Baker (Mrs. Paul W.), 7028 Kingsbury Road, University City 5, Mo.
- West Central Province*—  
Violette M. McCarthy (Mrs. Lorne V.), 1035 So. Fillmore Way, Denver 9, Colo.  
Lois Ayres Gordon (Mrs. Russell), 225 So. Poplar, Wichita, Kansas.
- Pacific Province*—  
Irva L. Rickson Rageth (Mrs. Alfred C.), 1922 Riddle Court, Stockton, Calif.  
Bertha MacDougall, 708 No. Killingsworth, Portland 11, Ore.

## EDITORIAL BOARD

- Atlantic Province*—  
*Active Representative*—Donna Maria Hankla, Box 1651 M.W.C., Fredericksburg, Va.  
*Alumnae Representative*—Una Allen, 53 Hancock Street, Boston, Mass.
- Great Lakes Province*—  
*Active Representative*—Guyneth F. Redman (Mrs. Clyde), 666 Thayer St., Toledo 9, Ohio.  
*Alumnae Representative*—Shirley Pierson Norberg (Mrs. Willard), 5317 No. Christiana St., Chicago 25, Ill.
- East Central Province*—  
*Active Representative*—Carolyn Combs, 1232 29th St., Des Moines, Iowa  
*Alumnae Representative*—Harriet G. Allen, 1855 Ashland Ave., St. Paul 5, Minn.
- West Central Province*—  
*Active Representative*—Janyce Patterson, 1224 4th Ave., Salt Lake City, Utah  
*Alumnae Representative*—Gloria E. Turquette Brydon (Mrs. Russell), 4312 Junius St., Apt. 2, Dallas, Texas.
- Pacific Province*—  
*Active Representative*—Barbara Dupuy, 328½-21st St., Manhattan Beach, Calif.  
*Alumnae Representative*—E. Marie Miller Fortier (Mrs. Joseph), 7015 So. Clement, Tacoma 9, Wash.

## DISTRICT CONFERENCES

- RUTH HOGG VICK (Mrs. William Plowden, III), 5338 Drane Drive, Dallas 9, Tex.  
50th ANNIVERSARY OBSERVANCE  
Chairman—Mildred Martin Christian (Mrs. Henry C.), 1568 Lauderdale Ave., Lakewood 7, Ohio.

## FINANCE

- Great Lakes Province*—DOROTHY E. PATON, *Chairman*, Observatory Lodge, 1402 Washington Heights, Apt. 304, Ann Arbor, Michigan.  
*Atlantic Province*—Katharine Shirley, 11 Park Drive, Boston, Mass.  
*East Central Province*—Helen Melaas Canine (Mrs. Willard, Jr.), Drake Trailer Camp No. 232, Des Moines, Iowa.  
*West Central Province*—Edna S. Ver Haar Deacon (Mrs. Stanley), 2208 West 56th St., Kansas City 2, Missouri.  
*Pacific Province*—Carolyn M. A. Reed Travis (Mrs. John A.), 9639 Bridgeport Way S.W., Tacoma 9, Wash.

## INTERNATIONAL MUSIC RELATIONS AND REHABILITATION

- BERNICE AUSTIN HUESTIS (Mrs. R. A.), 3832 Kirkwood Road, Cleveland Heights, Ohio.

## MAGAZINE SUBSCRIPTION AGENCY BOARD

- Chairman*: Helen McKie Ramage (Mrs. John), 15724 Turner St., Detroit 21, Mich.

- Atlantic Province*—Ruth Handbury, 4431 Spruce St., Philadelphia 4, Penn.  
*Great Lakes Province*—Almira Lindgren Snyder (Mrs. K.), 2618 Lincolnwood Drive, Evanston, Ill.  
*East Central Province*—Dorothy I. Mueller Kirkman (Mrs. Robert), 1055 4th Ave., Marion, Iowa.  
*West Central Province*—Irene Lewis Barber (Mrs. DeWitt), 4202 Hillside, Lincoln, Nebr.  
*Pacific Province*—Gertrude Squyer, 27 North Vega St., Alhambra, Calif.

## MU PHI EPSILON SCHOOL OF MUSIC AT GADS HILL CENTER

- 1919 West Cullerton, Chicago, Ill.  
*Director*—Winnifred R. Erickson, 1951 West Schiller St., Chicago 22, Illinois.  
*Treasurer*—Alma E. Grambauer, 1350 Henry St., Des Plaines, Illinois.  
*Representative on Settlement Board*—Carolyn H. Stubbs Wooden (Mrs. John C.), 700 Hinman Ave., Evanston, Ill.  
*Publicity Chairman*—Ruth E. Earhart Werchman (Mrs. John), 725 So. Ashland Blvd., Chicago 7, Ill.

## MUSIC IN HOSPITALS

- Chairman*—Viola Moen Anderson (Mrs. Henry O.), 1038-1st Street North, Fargo, North Dakota

## 1952 CONVENTION

- Chairman*—Jenne Nelson Westling (Mrs. A. E.), 5320-1st Ave. South, Minneapolis.

## PUBLIC RELATIONS

- Gertrude Otto, 120 West 70th St., New York 23, N. Y.  
Eleanor Keith Rehmman (Mrs. John C.), 3240 Terrace Drive, Des Moines, Iowa.  
Grace McAbee Bullock (Mrs. Cecil F.), 4806 Purdue St., Seattle 5, Wash.

## RITUAL

- Chairman*—Frances R. Phelps, 1018 Forest Ave., River Forest, Ill.

## SCHOLARSHIPS

- Chairman*—Helen Chute Dill, 339 Reeves, Beverly Hills, Calif.

## STERLING-MATHIAS MEMORIAL

- Chairman, Sterling-Mathias Memorial Fund*—Hildur Lavine Shaw (Mrs. William S.), 1319-9th Street South, Fargo, North Dakota.  
*Chairman, Sterling-Mathias Memorial*—Ava Comin Case (Mrs. Lee O.), School of Music, University of Michigan, Ann Arbor, Michigan.

## Active and Alumnae Chapters

### ATLANTIC PROVINCE

- Province Governor*—RUTH ROW CLUTCHER (Mrs. JOHN), National President, 21 Kent Road, Upper Darby, Pennsylvania.  
*Beta*—New England Conservatory of Music ..... Boston, Mass.  
*President*—VIVIAN JOHNSTON, 129 Hemenway St., Boston 15, Mass.  
*Mu*—Brenau College ..... Gainesville, Georgia  
*President*—BENA BOLTIN WELLS, Phi Mu House, Gainesville, Georgia  
*Psi*—Bucknell University ..... Lewisburg, Pennsylvania  
*President*—MARGARET AVIS NIPPES, W 73, Harris Hall, Lewisburg, Penn.  
*Mu Upsilon*—Eastman School of Music, University of Rochester ..... Rochester, N. Y.  
*President*—DORIS LUCILLE LONDON, 424 University Ave., Rochester 7, N. Y.  
*Phi Gamma*—Peabody Conservatory of Music ..... Baltimore, Maryland  
*President*—ANNE LOUISE MEYER, 613 Colraine Road, Baltimore 29, Maryland  
*Phi Upsilon*—Boston University College of Music ..... Boston, Mass.  
*President*—MARY FRANCES CONWAY, 11 East Newton St., Boston 18, Mass.  
*Phi Psi*—Mary Washington College of the Univ. of Virginia ..... Fredericksburg, Va.  
*President*—DONNA MARIA HANKLA, Box 1651 M.W.C., Fredericksburg, Va.  
*Phi Omega*—Westminster College ..... New Wilmington, Penn.  
*President*—MINA BELLE PACKER, 211 Ferguson Hall, New Wilmington, Penn.  
*Epsilon Beta*—Queens College ..... Charlotte, No. Car.  
*President*—SUZANNE SCHEER, 1712 Kenilworth Ave., Charlotte 3, No. Car.  
*Epsilon Nu*—West Virginia University ..... Morgantown, West Va.  
*President*—BERNADINE MCCUTCHEON, 221-C Woman's Hall, Morgantown, West Va.  
*Boston Alumnae Chapter*—  
*President*—RUTH B. ROCKAFELLOW BIRCH (Mrs. ALFRED K.), 52 Mayo Ave., Needham, Mass.  
*New York Alumnae Chapter*—  
*President*—ELEANOR MEHL BERGER (Mrs. ARNOLD R.), No. 1 Luquer Lane, Port Washington, L. I., N. Y.



- Philadelphia Alumnae Chapter*—  
President—VELMA D. SHIPP, 1633 Spruce St., Philadelphia 3, Penn.
- Pittsburgh Alumnae Chapter*—  
President—JESSIE YUILLE YON (MRS. CHARLES), 335 Locust St., Edgewood, Pennsylvania
- Washington Alumnae Chapter*—  
President—LOLA M. MILLER ORR (MRS. WM. J. BRYAN), 4400 Cathedral Ave. N.W., Washington 16, D. C.
- Rochester Alumnae Club*—  
President—RUTH WATANABE, Eastman School of Music, Rochester 4, N. Y.

### GREAT LAKES PROVINCE

- Province Governor*—ELVA B. McMULLEN GAMBLE (MRS. EUGENE E.), National Second Vice President, 9333 So. Hamilton Ave., Chicago 20, Ill.
- Gamma*—University of Michigan ..... Ann Arbor, Mich.  
President—NANCY ANNE FINLAY, 602 Lawrence, Ann Arbor, Mich.
- Epsilon*—Toledo Conservatory of Music ..... Toledo, Ohio  
President—JANET MARGARET RANKIN, R. 2, Box 310, Toledo 6, Ohio
- Iota Alpha*—Chicago Musical College ..... Chicago, Ill.  
President—JUANITA VERNER, 1906 No. Fremont, Chicago 14, Ill.
- Sigma*—Northwestern University ..... Evanston, Ill.  
President—DONNA MAE KRUSEL, 628 University Place, Evanston, Ill.
- Phi*—Mt. Union College ..... Alliance, Ohio  
President—GEORGIA LOUISE WILCOXON, 2121 Shunk Ave., Alliance, Ohio.
- Mu Xi*—American Conservatory of Music ..... Chicago, Ill.  
President—LOLA PINNEY (MRS. BELMONT R.), 30 Forest St., Park Forest, Chicago Heights, Ill.
- Mu Pi*—Ohio Wesleyan University ..... Delaware, Ohio  
President—MARILYN RUTH SLADE, Mobbett Hall, Delaware, Ohio
- Mu Phi*—Baldwin-Wallace College ..... Berea, Ohio  
President—SARALU COVERT DILLER (MRS. DWAIN E.), 231 Elmwood Drive, Berea, Ohio
- Phi Kappa*—Wayne University ..... Detroit, Mich.  
President—SHIRLEY ANN WALL, 16100 Ferguson, Detroit 27, Mich.
- Phi Omicron*—Western Reserve University ..... Cleveland, Ohio  
President—JOAN L. TEER RONIS (MRS. L.), 2457 Derbyshire Road, Cleveland Heights 6, Ohio
- Phi Sigma*—De Paul University ..... Chicago, Ill.  
President—SHIRLEY JANE MARES, 2406 So. Grove St., Berwyn, Ill.
- Epsilon Lambda*—Michigan State Normal College ..... Ypsilanti, Mich.  
President—PEGGY HEATON IRWIN, 211 Jones Hall, Ypsilanti, Mich.
- Ann Arbor Alumnae Chapter*—  
President—THELMA LEWIS, 1211 Birk Ave., Ann Arbor, Mich.
- Chicago Alumnae Chapter*—  
President—MARIE MUELLER WALLERICH (MRS. GEORGE W.), 814 Monroe Ave., River Forest, Ill.
- Cleveland Alumnae Chapter*—  
President—ARLINE ELIZABETH KADEL, 1543 Lewis Drive, Lakewood 7, Ohio
- Columbus Alumnae Chapter*—  
President—FRANCES GOODEMAN HAMLIN (MRS. HORACE J.), 325 E. Chestnut St., Lancaster, O.
- Detroit Alumnae Chapter*—  
President—BETH KALMBACH SHAFER (MRS. FRED J.), 16744 Harlow, Detroit 27, Michigan
- Evanston-North Shore Alumnae Chapter*—  
President—LAURA C. JONES THOMPSON (MRS. RICHARD H., JR.), Robin Road, Bannockburn, Deerfield, Ill.
- Toledo Alumnae Chapter*—  
President—FLORENCE MILLER CRAMER, 2058 Glenwood Ave., Toledo 2, Ohio
- Lansing-East Lansing Alumnae Club*—  
President—NELLIE C. WALKER FREELAND (MRS. PAUL F.), R. 1, Dimondale, Mich.
- Madison Alumnae Club*—  
President—SYLVIA SCHEEL ANDERSON (MRS. ELTON B.), 612 Howard Place, Madison 3, Wis.
- Milwaukee Alumnae Club*—  
President—RUTH RENDEN SULLIVAN (MRS. JOSEPH E.), 4912 No. Elkhart Ave., Milwaukee 11, Wisconsin

### EAST CENTRAL PROVINCE

- Province Governor*—GRAYCE KENT CLARK (MRS. ROY L.), National Editor 1616-46th Street, Des Moines, Iowa
- Zeta*—De Pauw University ..... Greencastle, Ind.  
President—VIRGINIA RUTH ARNOLD, 510 Crown St., Greencastle, Ind.
- Theta*—Kroeger School of Music ..... St. Louis, Mo.  
President—HELEN J. WOOLSTON ANDERSON (MRS. RICHARD V.), 1732 Del Norte, Richmond Heights 17, Missouri
- Kappa*—Jordan College of Music ..... Indianapolis, Ind.  
President—RITA MARIE FUSZEK, 1213 No. Pennsylvania, Indianapolis 2, Ind.
- Upsilon*—Cincinnati Conservatory of Music ..... Cincinnati, Ohio  
President—JOYCE AILEEN FISHER, Conservatory of Music, Cincinnati 19, Ohio
- Omega*—Drake University ..... Des Moines, Iowa  
President—DARLENE L. MAHER EVERS (MRS. GENE, JR.), Drake Trailer Camp No. 114, Des Moines, Iowa
- Mu Alpha*—Simpson College ..... Indianola, Iowa  
President—BETTY JEANE ATKINS, Tilton Court F-22, Indianola, Iowa

- Mu Epsilon*—MacPhail School of Music ..... Minneapolis, Minn.  
President—MARGARET M. STABLESKI ST. GEORGE (MRS. JOSEPH), 3545 No. Russell, Minneapolis, Minn.
- Mu Omicron*—College of Music ..... Cincinnati, Ohio  
President—R. THERESA HRAMETZ, 1227 Elm St., Cincinnati 10, Ohio
- Mu Psi*—Coe College ..... Cedar Rapids, Iowa  
President—MARGARET RAE MACH, 2057 Washington Ave. S.E., Cedar Rapids, Iowa
- Phi Theta*—Lindenwood College ..... St. Charles, Mo.  
President—EMILY TERRY, Lindenwood College, St. Charles, Mo.
- Phi Rho*—Minneapolis College of Music ..... Minneapolis, Minn.  
President—RUTH MARJORIE HAVLIK, 1122 Adams St. N.E., Minneapolis, Minn.
- Epsilon Alpha*—The College of St. Catherine ..... St. Paul, Minn.  
President—FLORENCE MARGARET LENIHAN, 4232 Fremont Ave. South, Minneapolis, Minnesota
- Epsilon Gamma*—Belhaven College ..... Jackson, Miss.  
President—MARY ELLEN CROSSLAND, Belhaven College, Jackson, Miss.
- Epsilon Kappa*—Southern Illinois University ..... Carbondale, Ill.  
President—LEAH MARIE BRADLEY, Anthony Hall, Carbondale, Illinois
- Cincinnati Alumnae Chapter*—  
President—MARTHA MANSFIELD SEIFRIED, 3117 Portsmouth Ave., Cincinnati 8, Ohio
- Des Moines Alumnae Chapter*—  
President—RUTH CLINE NEEDHAM (MRS. DRING D.), 6015 Waterbury Circle, Des Moines 12, Ia.
- Indianapolis Alumnae Chapter*—  
President—MARJORIE VON STADEN BERNAT (MRS. SAUL), 5155 Central Ave., Indianapolis 5, Ind.
- Minneapolis Alumnae Chapter*—  
OLGA BACKVOLD GRINDER (MRS. A. G.), 5644-12th Ave. South, Minneapolis 9, Minnesota
- St. Louis Alumnae Chapter*—  
President—CLEO CELESTE MILLIGAN (MRS. ROY H.), 7575 Stanford, University City 5, Missouri
- St. Paul Alumnae Chapter*—  
President—AGNES SNELL HAYES (MRS. ROGER J.), 92 So. Cambridge Ave., St. Paul 5, Minn.
- Cedar Rapids Alumnae Club*—  
President—A. LUCILE MCKEE ANTHONY (MRS. PAUL), 3170 Adel St. S.E., Cedar Rapids, Ia.
- Evansville Alumnae Club*—  
President—KATHRYN E. GILB HUISMAN (MRS. CARL), Hillcrest Home, West Indiana Ave., Evansville, Indiana

### WEST CENTRAL PROVINCE

- Province Governor*—OLIVE E. GALLOWAY WILLIAMS (MRS. DON S.), National Third Vice President, 3035 South 44th St., Lincoln 2, Nebraska
- Xi*—University of Kansas ..... Lawrence, Kansas  
President—JACQUELYN YVETTE STOOPS, 1215 Oread, Lawrence, Kansas
- Mu Gamma*—University of Nebraska ..... Lincoln, Nebraska  
President—ELINOR MAE HANSON, 626 North 16th St., Lincoln, Nebr.
- Mu Delta*—Kansas City Conservatory of Music ..... Kansas City, Missouri  
President—MARTHA JANE MILLER, 5334 Harrison, Kansas City 4, Mo.
- Mu Theta*—University of Texas ..... Austin, Texas  
President—SARAH ANN HANOVER, 708 Landon Lane, Austin, Texas
- Mu Kappa*—University of Oklahoma ..... Norman, Oklahoma  
President—LUCILLE M. BOATMAN BRITE (MRS. ROBERT N.), 524 West Boyd, Norman, Okla.
- Mu Mu*—Kansas State College ..... Manhattan, Kansas  
President—C. JOAN MAHANNA MOSIER (MRS. FRANK), 519 No. Manhattan, Manhattan, Kansas
- Mu Rho*—Lamont School of Music, University of Denver ..... Denver, Colorado  
President—BEVERLY ANN BAUER, 12030 East Colfax Ave., Denver 8, Colo.
- Mu Tau*—University of South Dakota ..... Vermillion, South Dakota  
President—JULIE ANN RAUK, 102 South Yale, Vermillion, So. Dak.
- Mu Chi*—Southern Methodist University ..... Dallas, Texas  
President—MARY ANN SMITH, Tri-Delt Box S.M.U., Dallas, Texas
- Phi Epsilon*—College of Emporia ..... Emporia, Kansas  
President—MARJORIE ANN FISK, Dunlap Hall, Emporia, Kansas
- Phi Zeta*—Morningside College ..... Sioux City, Iowa  
President—DORIS JEAN LIEVESTAD, 3312 Vine Ave., Sioux City 20, Iowa
- Phi Iota*—Concordia College ..... Moorhead, Minnesota  
President—BORGHILD GUNNLANG TORVIK, 1019-9th Ave. So., Moorhead, Minn.
- Phi Xi*—Baylor University ..... Waco, Texas  
President—G. ANN NORTHEUM, Box 66, Burleson Hall, Waco, Texas
- Phi Pi*—University of Wichita ..... Wichita, Kansas  
President—THELMA LAVONNE GRABER, 3616 East 21st St., Wichita 15, Kansas
- Phi Tau*—North Texas State Teachers College ..... Denton, Texas  
President—LEOTA VINGENT, Box 5085 N.T.S.T., Denton, Texas
- Phi Phi*—University of Kansas City ..... Kansas City, Missouri  
President—DOLORES MAE WATERS, 3220 Karnes Blvd., Kansas City 2, Mo.
- Epsilon Epsilon*—Texas Christian University ..... Fort Worth, Texas  
President—FRANCES RUTH HALSTEAD, Box 486 T.C.U., Forth Worth, Texas
- Epsilon Zeta*—Hendrix College ..... Conway, Arkansas  
President—SUZANNE WILLIAMS, Miller Hall, Conway, Arkansas
- Epsilon Mu*—University of Utah ..... Salt Lake City, Utah  
President—NORMA LEE MADSEN, 2809 Connor St., Salt Lake City, Utah



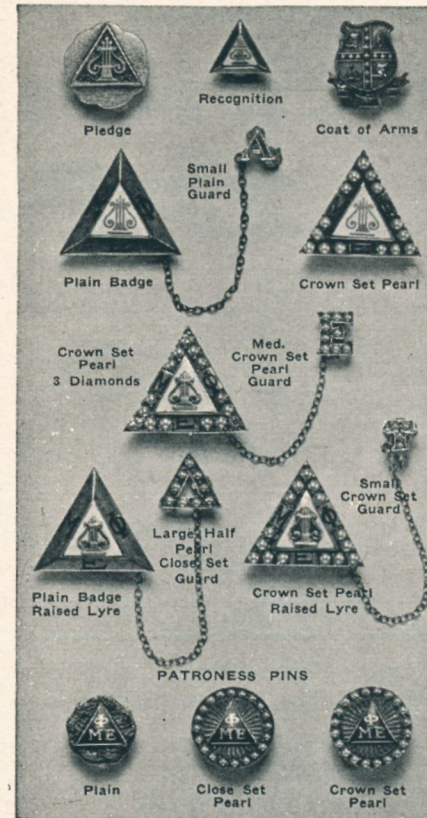
- Dallas Alumnae Chapter—*  
 President—LYDA L. WOOD BUSSEY (MRS. CHARLES D.), 5601 Greenbrier Drive, Dallas, Texas
- Denver Alumnae Chapter—*  
 President—ALVIE MARIE OLSON, 975 Washington, Denver, Colo.
- Kansas City Alumnae Chapter—*  
 President—EDNA S. VER HAAR DEACON (MRS. STANLEY), 2208 West 56th St., Kansas City 2, Mo.
- Lincoln Alumnae Chapter—*  
 President—ALICE E. HUSSONG BIEBERSTEIN (MRS. PAUL C.), 1549 South 23d St., Lincoln, Neb.
- Oklahoma City Alumnae Chapter—*  
 President—RUTH SCOTT PETTY (MRS. DENNIS H.), 1409 N.W. 19th St., Oklahoma City 6, Okla.
- Wichita Alumnae Chapter—*  
 President—ARDEEN F. BURKETT CASADO (MRS. TONY), 215 South Glendale, Wichita, Kansas
- Tulsa Alumnae Club—*  
 President—JOSEPHINE H. QUINN MILLER (MRS. NORMAN H.), 1729 So. Baltimore, Tulsa, Okla.

### PACIFIC PROVINCE

- Province Governor—*ELEANOR E. HALE WILSON (MRS. P. RAYMOND), National First Vice President, 2800-39th Ave. West, Seattle 99, Washington
- Nu—University of Oregon* ..... Eugene, Oregon  
 President—ELLEN MARGARETE LIEBE, 1353 Agate St., Eugene, Oregon
- Tau—University of Washington* ..... Seattle, Washington  
 President—MARGARET LEA BULLOCK, 4806 Purdue Ave., Seattle 5, Wash.
- Mu Beta—Washington State College* ..... Pullman, Washington  
 President—MARILYN LYNETTE STOCKER, Kappa Kappa Gamma, Pullman, Wash.
- Mu Zeta—Whitman College* ..... Walla Walla, Wash.  
 President—C. JANET CATION, 122 Pearl St., Walla Walla, Wash.
- Mu Eta—College of the Pacific* ..... Stockton, Calif.  
 President—JOYCE ANNETTE HEATON, South Hall C.O.P., Stockton, Calif.
- Mu Nu—University of Southern California* ..... Los Angeles, California  
 President—MARTHA JOSEPHINE SPRATT, 6517 West Olympic Blvd., Los Angeles 35, Calif.
- Phi Lambda—Willamette University* ..... Salem, Oregon  
 President—LOIS ANN GOTTWALD, 505 No. Capitol St., Salem, Ore.
- Phi Mu—San Jose State College* ..... San Jose, California  
 President—KATHARINE BELLE FULLER, R. 2, Box 152, Campbell, Calif.
- Phi Nu—University of California at Los Angeles* ..... Los Angeles, California  
 President—ELFRIEDA MARIA ALICE DOLCH, 10775 Lindbrook Drive, Los Angeles 24, Calif.
- Phi Chi—Fresno State College* ..... Fresno, California  
 President—BEATRICE ELAINE ERICKSON, 817 Weldon, Fresno, Calif.
- Epsilon Delta—Lewis and Clark College* ..... Portland, Oregon  
 President—BARBARA JEAN FORBES, Ivy Hall, Lewis and Clark College, Portland 1, Oregon
- Epsilon Eta—George Pepperdine College* ..... Los Angeles, Calif.  
 President—JERRIE ANN HUFFAKER, 1121 West 79th St., Los Angeles 44, Calif.
- Epsilon Theta—Linfield College* ..... McMinnville, Oregon  
 President—ROSE M. DRUSE CAUGHRAN (MRS. CLARENCE), Box 544, Linfield College, McMinnville, Oregon
- Epsilon Iota—Eastern Washington College of Education* ..... Cheney, Wash.  
 President—EILEEN CAROLYN WEBB, 315 Monroe Hall E.W.C.E., Cheney, Wash.
- Beverly Hills Alumnae Chapter—*  
 President—ESTHER BEER FUNK (MRS. ROLAND), 251 So. McCarty Drive, Beverly Hills, Calif.
- Los Angeles Alumnae Chapter—*  
 President—MINABEL MORRIS HUNT (MRS. EARL R.), 119 No. Hobart, Los Angeles 4, Calif.
- Portland Alumnae Chapter—*  
 President—BERTHA MACDOUGALL, 708 No. Killingsworth St., Portland 11, Oregon
- San Francisco Alumnae Chapter—*  
 President—MARCELLE E. WYNN VERNAZZA (MRS. JEROME A.), 334-11th Ave., San Francisco 18, Calif.
- San Jose Alumnae Chapter—*  
 President—MIDRED L. BROWN MCKEE (MRS. STUART S.), 868 Clintonia Ave., San Jose 10, Cal.
- Seattle Alumnae Chapter—*  
 President—LUCILLE I. BAKER GALT (MRS. DONALD S.), 9106-12th N.E., Seattle 5, Washington
- Spokane Alumnae Chapter—*  
 President—EUNICE I. WOLTERS BARR (MRS. ROBERT), East 3327 Congress, Spokane, Wash.
- Stockton Alumnae Chapter—*  
 President—IRVA L. RICKSON RAGETH (MRS. ALFRED C.), 1922 Riddle Court, Stockton, Calif.
- Tacoma Alumnae Chapter—*  
 President—EILEEN C. RAABERG VAN AUKEN (MRS. M. M.), 814 North Cushman, Tacoma 7, Washington
- Eugene Alumnae Club—*  
 President—MARJORIE J. SCOBERT WILSON (MRS. ROBERT W.), 62 West 20th St., Eugene, Oregon
- Honolulu Alumnae Club—*  
 President—LAMORA SAUVINET GARY, 332-A Royal Hawaiian Ave., Honolulu, T. H.
- San Diego Alumnae Club—*  
 President—MARY BUSH CALDWELL (MRS. ALLEN), 1825 Cypress Ave., San Diego 3, Calif.
- Walla Walla Alumnae Club—*  
 President—MYRTLE E. FALK, 130 Dice Place, Walla Walla, Wash.

# YOUR Balfour BADGE

## A Beautiful Symbol of Friendship



Your pin is an emblem of fraternity—of lasting friendship and fellowship during your college days. Fashioned of fine gold and precious jewels by the hands of Balfour Craftsmen, your fraternity pin will always be a treasured symbol of your membership. As your official jeweler, Balfour guarantees the highest quality, finest workmanship, and assures you of our sincere desire to please.

### Insignia Price List

BADGES:	
Plain	\$ 5.00
Close set pearl	10.00
Crown set pearl	15.00
Crown set pearl, 3 diamonds	39.00
Crown set pearl, 6 diamonds	63.50
Crown set all diamond	123.50
Raised Lyre on badges	\$.100 additional
Recognition pin, 10K gold	\$ 1.75
Pledge pin, sterling	.75
Greek (drop) letter pendant, 10K gold	2.25
Same with gold filled chain	3.00

PATRON OR PATRONESS PINS	
Nugget border	\$ 4.00
Close set pearl	10.75
Crown set pearl	13.50

MUSIC AWARD CHARM	
Sterling	\$ 2.00
1/10 10K gold filled	3.00

GUARD PINS	Single Letter	Double Letter
Plain gold	\$ 2.25	\$ 3.50
Close set pearl	4.50	7.25
Crown set pearl	6.50	11.50

**NOTE:** The small size guards are no longer available.  
**TAXES:** 20% Federal Tax and any state taxes are in addition.  
**REGULATIONS:** Orders for official insignia should be placed with National Executive Office.

### 1951 Balfour Blue Book

A 64-page catalog featuring a complete selection of crested rings, jewelry, billfolds, stationery, knitwear, awards, programs, favors, and gifts.

Mail post card NOW for YOUR FREE COPY!

Sole Official Jeweler to Mu Phi Epsilon  
**L. G. BALFOUR COMPANY**  
 Attleboro Massachusetts

In Canada . . . Contact your nearest BIRKS' STORE

THE MAY 1951 TRIANGLE OF MU PHI EPSILON



# Change of Name and Address

Must be sent not later than the first day of month of issue of Triangle to the NATIONAL EXECUTIVE OFFICE, 6604 Maplewood Ave., Sylvania, Ohio.

Post Office will not forward copies unless extra postage is sent. Duplicate copies cannot be issued to those who fail to send notice of their change of name or address.

USE THIS FORM

Chapter of Initiation..... Date of Initiation.....

Name at time of initiation.....  
 (Family) (First) (Middle)

Present Name .....  
 (Family) (First) (Middle)

Husband's Name, if married.....  
 (Family) (First) (Middle)

Former Address .....  
 (Number) (Street)  
 (City) (State)

New Address .....  
 (Number) (Street)  
 (City) (State)

## San Jose Installed

(CONTINUED FROM PAGE 3)

The San Francisco Alumnae Chapter cancelled its regular February meeting in order to attend the ceremonies. Members of Phi Mu Chapter at San Jose State assisted with the tea and played in the instrumental ensemble on the program.

At the close of the program, tea was served in the dining room where the tea table had been artistically decorated with white camellias and bunches of violets.

Small ceramic violet bowls inscribed with MΦE and the date of installation were handmade by a committee of Alumnae Chapter members and given as favors to

everyone who attended the ceremonies.—ERMA-LOUISE JOHNSON.

## Old Timers

(CONTINUED FROM PAGE 12)

Helen Traubel made us a visit a few years ago, and now has her home here, with an ocean view. Madame Flagstad has spent weeks with us and wishes to return soon.

The vacationer will say, "Here is everything—gayety and laughter to revive my spirit, surf and sun to rejuvenate my body, and a lift in the air to send me away with a young heart. One hears, "I came for a day and stayed for a lifetime."

Sunset—the little village in blossomtime—the water—ships that pass.—ESTHER PAUL McQUIE.

# THE ALUMNAE CHAPTERS



## CALENDAR

1950-1951

September—*President* calls meeting of chapter officers to make plans for the year.

*Corresponding Secretary* reports any changes in names and addresses of chapter officers to NEO (National Executive Office, 6604 Maplewood Ave., Sylvania, Ohio) and orders supplies for the year (from NEO) enclosing check and remittance blank secured from *Treasurer*.

September 10—*Historian*: All material for inclusion in November TRIANGLE must be in the Office of the National Editor, Grayce Kent Clark (Mrs. Roy L.), 1616-46th St., Des Moines, Iowa.

October 15—*Treasurer* and *Corresponding Secretary* prepare and send to NEO, fall membership lists (on official forms) and check with remittance blank to cover fall per capita taxes (\$.75 per member), and Convention taxes (\$1.25 per member—for Alumnae chapters only), and TRIANGLE subscriptions for annual subscribers (\$1.00 per year).

November 13—*Founders' Day*. Forty-Seventh Anniversary.

*Treasurer* sends with remittance blank to NEO, check with remittance blank for *Founders' Day* Fund voluntary contribution of 47 pennies per member.

November 15—*Historian's* required fall newsletter due at Office of National Editor; deadline for material for January TRIANGLE.

December 1—*President* writes fall report-letter to National Third Vice President Olive E. Galloway Williams (Mrs. Don S.), 3035 So. 44th St., Lincoln 2, Nebr.

January 10—*Historian*: Deadline for material for March TRIANGLE.

February 1—Contestants, Musicological Research Contest: send notice of your intention to enter contest to Berniece E. Wallis (Mrs. Harold E.), 2126 Shelby St., Seattle 2, Wash.

March 10—*Historian*: Deadline for required spring newsletter and other material for May TRIANGLE.

March 15—*Treasurer* and *Corresponding Secretary* prepare and send to NEO, spring membership lists (on official forms) and check with remittance blank to cover spring per capita taxes (\$.75 per member), and Convention taxes (\$1.25 per member—for Alumnae Chapters only).

March 15—Manuscripts for Musicological Research Contest due at Office of Berniece E. Wallis (Mrs. Harold E.), 2126 Shelby St., Seattle 2, Wash.

*President* writes spring report-letter to National Third Vice President.

June 1—*President*, *Treasurer* and *Corresponding Secretary* send annual reports to NEO (on official forms).

June 1—Manuscripts for Original Composition Contest due at office of National Second Vice-President Elva B. McMullen Gamble (Mrs. Eugene E.), 9333 So. Hamilton Ave., Chicago 20, Ill.





he  
Mu Phi Epsilon  
Creed

*I believe in Music, the noblest of all the arts, a source of much that is good, just, and beautiful; in Friendship, marked by love, kindness, and sincerity; and in Harmony, the essence of a true and happy life. I believe in the sacred bond of Sisterhood, loyal, generous, and self-sacrificing, and its strength shall ever guide me in the path that leads upward toward the stars.*

—RUTH JANE KIRBY, Omega