

v. 47 #2

The Triangle



of Mu Phi Epsilon
January, 1953

... The Active Chapters

1952-53 CALENDAR

FIRST WEEK OF SCHOOL: President calls meeting of chapter officers to inspect chapter equipment, discuss fall materials received from NEO (National Executive Office), 6604 Maplewood Avenue, Sylvania, Ohio, and make plans for the year.

Corresponding Secretary reports any changes in name and address of chapter officers to NEO and orders supplies for the year (from NEO), enclosing check and remittance blank secured from Treasurer.

SEPTEMBER 10—Historian: All material for inclusion in November TRIANGLE must be in the Office of the National Editor, Ruth Havlik, 1122 Adams St. N.E., Minneapolis 13, Minn.

NOVEMBER 13—Founders' Day. Forty-Ninth Anniversary.
Treasurer sends with remittance blank to NEO, check for Founders' Day Fund voluntary contribution of 49 pennies per member.

NOVEMBER 15—Treasurer and Corresponding Secretary prepare and send to NEO, fall membership lists (on official forms) and check with remittance blank to cover fall per capita taxes (\$1.50 per member) and Convention taxes (\$1.25 per member), and TRIANGLE subscriptions for annual subscribers (\$1.00 per year).

Historian's required fall newsletter due at Office of National Editor; deadline for material for January TRIANGLE.

DECEMBER 15—President writes fall report-letter to your Province Governor concerning chapter activities and problems.

JANUARY 10—Historian's required newsletter due at Office of National Editor. Deadline for all material for March TRIANGLE.

FEBRUARY 1—Contestants, Musicological Research Contest: send notice of your intention to enter contest to Ardeen Burkett Casado (Mrs. Tony), 215 So. Glendale, Wichita, Kans.

MARCH 1—Closing date for entries in Mu Phi Epsilon Song Contest for 1953.

MARCH 10—Historian: Deadline for required spring newsletter and other material for May TRIANGLE.

MARCH 15—Manuscripts for Musicological Research Contest due at Office of Ardeen Burkett Casado (Mrs. Tony), 215 So. Glendale, Wichita, Kans.

LAST WEEK OF FIRST SEMESTER: President appoints Nominating Committee for new Chapter officers.

FIRST MONTH OF SECOND SEMESTER—President calls meeting of chapter for the election of new officers, who will be installed in office during the second month of the second semester.

Corresponding Secretary reports the names and addresses of new chapter officers (on official forms) to NEO.

APRIL 15—Treasurer and Corresponding Secretary prepare and send to NEO, spring membership lists (on official forms) and check, with remittance blank to cover spring per capita taxes (\$1.50 per member), and Convention taxes (\$1.25 per member).

APRIL 15—President writes spring report-letter to your Province Governor.

JUNE 1—President, Treasurer and Corresponding Secretary send annual reports to NEO (on official forms).

JUNE 1—Manuscripts for Original Composition Contest due at office of National Second Vice President, Elva B. McMullen Gamble (Mrs. Eugene E.), 9333 So. Hamilton Ave., Chicago 20, Ill.



CONTENTS for JANUARY, 1953

	Page
Historical Reflections.....	2
Mu Phis Here and There.....	5
Report of National Meeting of Association for Music Therapy.....	6
Music Therapy at Work.....	9
The Pride of Mu Phi Epsilon.....	10
Announcing 1953 Original Composition Contest.....	11
More Jewels in Our Crown.....	13
Phi Iota at Homecoming.....	18
Mu Phi Epsilon Annual Awards.....	19
Portland Chapter Awards Scholarship.....	21
Interlochen Dedication.....	22
Historians Reporting.....	23
Interlochen Dedication Reservation Blank.....	39
Mu Phi Epsilon Directory.....	40

Ruth Havlik, Editor

THE TRIANGLE of Mu Phi Epsilon is published five times yearly, the first of September, November, January, March and May, at 2642 University Ave., Saint Paul, Minnesota, by Leland Publishers, Incorporated (The Fraternity Press) for Mu Phi Epsilon, National Music Sorority. The subscription price is \$1.00 per year. Deadlines for copy: Materials for publication must reach the Editor, 1122 Adams St., N. E., Minneapolis 13, Minn., before the tenth of September, January, March and the fifteenth of November. Entered as second class matter at the postoffice at Saint Paul, Minnesota, under the act of March 5, 1879.

VOLUME 47

NUMBER 2





Myrtal Palmer Leach, Second National President of Mu Phi Epsilon, 1905-07

tion was had at the hands of a family friend and was followed after graduation from high school by a year in Kalamazoo in studying piano with a noted professor and "boning up" on literary subjects necessary to entering University of Michigan. I think the happiest years of my younger life were those in the University School of Music and the Literary Department. They opened an entirely new vista for me and contacts with my teachers and students inspired me to work like a Trojan, so that the year before I

HISTORICAL

graduated in both subjects, I was the happy possessor of an invitation to become one of the students selected to become a charter member of *Gamma Chapter* of Mu Phi Epsilon, this event taking place on May 20, 1904. We were seven in all, and were we happy! Immediately upon graduation I became Organist and Choir Director in the First Presbyterian Church in Ann Arbor where a quartet composed of two voice teachers from the School of Music and two members of the *Sinfonia* Fraternity helped make the year musically rich and satisfying.

The first annual convention of Mu Phi Epsilon was held in Cincinnati, Ohio, on June 17-18-19, 1904. As Beta Chapter was then inactive, it happened that I was the first and only delegate to the convention and came home wearing the wings of National Vice President. I

△ WHEN I was first asked to write of my memories about my early work for our sorority and my own musical life, my first thought was, "How can I? Can I go back over 50 years of activity both musical and personal, and recall all that I should?" Well—I will try.

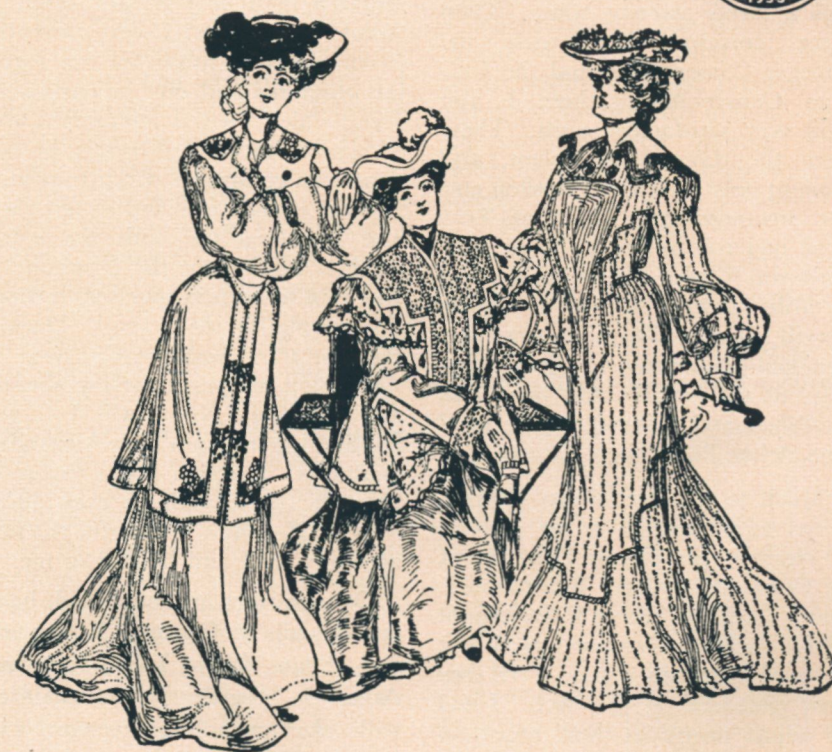
I think I must be about the oldest sister in our beloved sorority, being born on August 17, 1876, in lower Michigan, near Kalamazoo. My love of music must have been inherited, for my grandfather and father were violinists and an aunt was a noted singer and teacher of voice and piano. My first piano instruc-

wore these rather complacently, I must confess, for I felt the office did not carry too much responsibility, which I felt was best for me in my then state of inexperience as to sorority life. My placidity was short-lived, for the following January, our National President and close friend, Elizabeth Mathias, had a nervous collapse and had to resign her office. This left little, inexperienced ME to take over. Did I have to work and study? I shall never cease to be grateful for the help given me by our brother fraternity (*Sinfonia*).

My own chapter pulled with me completely also. There were pins to be more completely designed (mostly the jeweled type), charters to be made out, and certificates to be outlined for new membership which we hoped to increase. In passing, I wish to mention that my chapter gave me the first crown-set membership pin in Mu Phi Epsilon.

Our *Beta Chapter* in the New England Conservatory in Boston had been organized the year before my own chapter but had become inactive because, as they frankly

REFLECTIONS...



owned, they had been too clannish and did not look up new girls, until they were finally down to one active member. I felt I could not rest until their chapter was reactivated, so I began a correspondence with the Head of the Conservatory, and finally it all worked out nicely and the chapter was once more active.

It gave me great pleasure to next install Delta Chapter in the Detroit Conservatory of Music with ten good members. They have always been very active and I believe closed their first year with 16 members. After that came a request from a local chapter in Syracuse, New York, who wished to affiliate with us and become National. What a wonderful time we had at that ceremony. They were a fine group of girls and had a lovely sorority house. Then came correspondence with the Kroeger Conservatory and the Chicago Conservatory, where I also paid very satisfactory visits. Those were the days—I ate, slept, and thought only of Mu Phi Epsilon and her advancement. The first Year Book had to be outlined and printed. That was a poser for me for we had so little material to use. Florence Scovill (Delta Chapter) was our National Historian and was a great help to me; finally, the book was published and printed by our local Ann Arbor Press.

Much to my everlasting surprise, I was recommended to the position of Head of the Organ Department in Converse College, Spartanburg, South Carolina, where I also taught piano. Believe it or not, my sisters, I stayed there ten years. Were they busy years? I'll say they were. I had to adjust myself to their system of three in each class, but finally

worked it out satisfactorily. I found Converse to be very up-to-date, with a fine auditorium which had a large stage and seating capacity for 2500. I had a four-manual organ to use for teaching and concert work and it was my good luck to be able to graduate students from both of my departments. There were many concerts given by faculty and whenever I had a graduate student giving a recital, it was nice to be able to draw from the violin department and then add my postgraduate organ student and with the addition of two grand pianos, we gave some fine orchestral programs. Their Music Festival occurs in April, and it was gratifying at those times to be able to play the organ under the leadership of Walter Damrosch. What a man he was, and what a wonderful director! I was constantly looking up new music for our regular programs and one in particular about which I was much excited was composed entirely of music by all American composers. Each to whom I wrote seemed gratified at my plan and furnished me with the extra music I needed for the program. I was glad to keep in touch with these fine people for many years. During the first three years at Converse, I spent each summer traveling abroad and studying. Never will I forget my first organ lesson with Alexandre Guilmant. It seems I was expected to recite (play) with my eyes blindfolded. He was a wonderful teacher and very kind and helpful to me.

One amusing incident which happened while at Converse I must tell you about. Before I had left Ann Arbor I became well acquainted with that wonderful woman and singer, Madame Schumann-Heink,

who often sang for us and was so well beloved. It was a proud evening when I had the honor of ushering her into our Gamma Chapter as an Honorary Member. Converse College had always had a series of Artist's Concerts during the winter season and Madame Schumann-Heink sang for us several times. On that unforgettable first time, I had been downtown and called on her at her hotel and she asked me to be sure and come back to see her after the concert. So I went back to the Green Room to find it jammed mostly with students anxious to meet her. I stood at the door of the room, waiting my turn, when all of a sudden she spied me and sweeping everyone aside, hurried down the line, throwing her arms about me and exclaiming, "Mein own seester," in her broken English. My girls were astonished for they thought we were related and were quite put out that I had not told them. I had to explain that we were *Sorority Sisters in Mu Phi Epsilon*.

About this same time I was called to take the position of Organist and Choir Director in the Baptist church in Spartanburg, which I kept up to the time I left Spartanburg. During this period of the World War, my husband-to-be was an officer stationed at Camp Wadsworth, in Spartanburg, and we decided to marry before he was called overseas. We had a military wedding in the drawing rooms of the College, with several of the foreign service officers attending in their striking uniforms, and were married by Dr. Pell, President of the College. I remained in the College until December, 1918, and after my husband's return he again took up his former work in the Public Service Commission in

New York City. After spending a brief period in Flint, Michigan, we moved to Malden, Mass., where we lived for 18 years. During this time I was active in the Women Musician's Club in Boston, did some teaching, and was Organist and Choir Director of Mysticside Congregational Church. In 1940 we moved to Salem where we now live quietly (as much as the Leach's ever can). This last summer we had a surprise visit from Bernice Oechler, and if all of our National Officers are like Bernice, I do not wonder that our Sorority has grown to such proportions. I was glad to have a copy of the first Mu Phi Epsilon Year Book to give Bernice for our Archives.

My affection and interest in Mu Phi Epsilon are as strong as ever but I sometimes feel like one on "the outside looking in." I am very proud of the Sorority and her progress and am glad that my little mite of retrospection has been desired. With much love and good wishes to all my sisters,

Yours fraternally,

MYRTAL PALMER LEACH

Second National President

Mu Phis Here and There

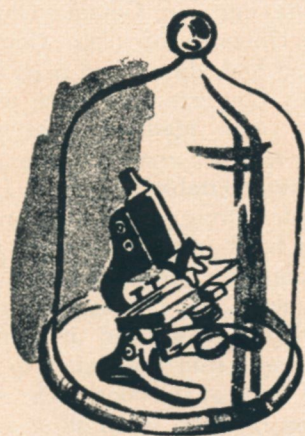
Minneapolis Mu Phis were proud and delighted to visit with Frances Lehnerts, talented and lovely soprano, in November. Frances sang several concerts in the Northwest, among them one at the University of Minnesota, her alma mater. This outstanding musical event increased our pride in our sister and the opportunity to speak with her at a luncheon later, was a source of inspiration to all Mu Phis present!

△ COMING away from the Third National Meeting of the Association for Music Therapy at Topeka recently, I was filled with enthusiasm and the hope that I could pass on to you Mu Phi Epsilon members an interest and create a desire to investigate the opportunities and possibilities of this new field.

Outstanding national figures in music, psychiatry, and medicine spoke to us. I regret that space forbids listing of names. Panel discussions and lectures centered about these topics: Music in Mental Hospitals; Music for Tuberculous Patients; Music for the Mentally Retarded; Coördination of Music Therapy with Other Adjunctive Therapies; Psychiatric Concepts of Music Therapy; Use of Electronic Instruments in Music Therapy; Clinical and Experimental Research; Research Techniques and Limitations; Research Literature. Two Mu Phis gave fine papers on their actual work as therapists. Lois Benedict, Hollywood, California, acted as chairman of the panel on "Music in Corrective Institutions" and told of "The Function of Music in a Woman's Jail." Lois is President of the Music Research Association of California and is continuing work toward her M.E. degree with a Major in Functional Music. Wilhelmina K. Harbert, Professor of Musical Guidance and Therapy, Stockton, California, gave a splendid report on "Some Results from Specific Techniques in the Use of Music with Exceptional Children." Our sorority can be justly proud of the wonderful contributions of these two members in this new branch of musical education.

It is only recently that the use of

... Music



Report of the Meeting for the

music in hospitals has assumed any importance. The medical profession has been slow in accepting its value although psychiatry has seen its worth for some time. A great step forward was taken at this meeting by the adoption of a set of standards acceptable to the Medical Groups which lead to a B.A. or B.M. in Music Therapy. I am stating these requirements for the benefit of those who may be interested.

GENERAL EDUCATION (30)*

Sufficient flexibility is permitted under General Education to allow for the specific requirements of various institutions.

PHYSICAL EDUCATION (4)

To include as many dancing activities as possible—folk, square, tap and creative dancing.

(*Numerals indicate minimum semester hours.)

Therapy...



National Association of Music Therapy

MUSIC (60)

Basic Theory (2 years) to include Rhythmic and Melodic. Dictation, Sight Singing, Keyboard Harmony, Harmony.

History of Music (1 year)

Piano. Great stress to be placed on sight playing, accompanying, transposition, improvising accompaniments to given melodies, playing by ear, and a wide knowledge of piano literature.

Voice. Preferably class voice, which should include vocal methods.

Organ.

Class Instruments. At least 1 semester each of Brass, Woodwind and Strings. Percussion instruments recommended. Instrumental ensemble highly desirable.

Conducting.

Arranging. Basic work in arranging and adapting for small groups of instruments and vocal combinations.

Recreational Music. Included under this are non-symphonic instruments, rhythm band, musical games, and community singing.

SOCIAL STUDIES (8)

Principles of Sociology.
Delinquent and Normal Behavior.
Mental Hygiene.
The Family.

PSYCHOLOGY (16)

General Psychology.
Child or Adolescent Psychology.
Abnormal Psychology

Psychology of Music (Minimum of 4 S.H.)

Influence of Music on Behavior (3 to 5 S.H.)

Clinical and Experimental Psychology recommended.

GENERAL ELECTIVES (10) Total 128 S.H.

CLINICAL TRAINING

A minimum of six months' residence internship in an approved neuro-psychiatric hospital. Students planning to work with mentally defective or handicapped children should spend an additional two months in an appropriate institution.

The latitude of service and desirable traits of the worker were brought out in "A Telescopic Clinic for Volunteer Services." We must not minimize the great contributions

of all who serve in any volunteer capacity. However, from our ranks should come those who wish to make Music Therapy their career. If among our talented girls there are those who have love for their fellow man and seek to be of service to humanity, I can think of no greater opportunity than to choose this new field which holds out such a bright promise of gratification for helping fellow beings. It becomes, then, a matter of information and education as regards Music Therapy to be disseminated to each individual and group within our sorority. It is hoped that this report has whetted the curiosity of many to seek more information from me regarding it, and of others to offer volunteer services to hospitals in home communities. Your chairman is most eager to communicate with all of you now taking or considering taking work

leading to an M.T. degree and all who do volunteer work. In order that MΦE may take its rightful place with other musical sororities, we must stress and publicize the work I feel sure members are doing. Won't you let me know *directly* what you are accomplishing locally and please see that news items relating to your work appear in community publications. This appears to be an extremely rewarding career for our young musicians to enter upon. I urge every one interested, to start making plans to attend the 1953 meeting of the NAMT at East Lansing, Michigan.

VIOLA M. ANDERSON
Chairman, Music in
Hospitals

Marriages . . .

Bertha Marron King, past National President, to V. B. Van Tilburg, in November, 1952, in Vista, California.
Artiss de Volt, internationally known harpist, to Robert Mathias Zacharias, on August 9, in Salzburg, Austria.

Cedar Rapids Alumnae

Virginia Ohmann to Leo Geesaman, June 22, 1952.
Irma Kubik to Carl Dresselhaus, June 20, 1952.
Betty Isabella Thompson, Maumee Valley Alumnae, to Harold Edward Wahl, August 16, 1952.
Jo Anne Stricklin, Mu Pi, to Roger Kennedy, April, 1952.
Miriam Jane Francis, Mu Pi, to Philip Richard Dietterich, September, 1952.
Kathleen Brodle, Epsilon Alpha, to George Creighton Hottinger, September 20, 1952.

**MTNA CONVENTION,
Netherland-Plaza Hotel,
Cincinnati, Ohio,
February 19-22, 1953**



Viola M. Anderson



Janet Lindecker, Maumee Valley Alumnae, is a graduate of Mary Manse College, taking graduate work at the University of Toledo and receiving a degree of Musical Therapy at Michigan State College.

Music Therapy AT WORK

△ THERE is music in the air these days at Cleveland's Child Study Institute—magic mood music, intended to relax tension and stimulate pleasant rather than destructive thoughts in the troubled minds of boys and girls forcibly detained. It's called Musical Therapy, this new wrinkle in mental aid to emotionally maladjusted youngsters. The musical therapist is Janet Lindecker, possessor of a brand of courage that has won the admiration and respect of "problem" children who as a rule regard officials warily. Janet, though not completely blind, sees very little, and cannot distinguish individuals in

a group or even the notes she plays so accurately on her tiny piano. Her handicap is one which oddly enough, gives her a kinship with the youngsters she instructs and in the 14 months she has carried on at CSI, only one child ever tried to take advantage of her poor eyesight by placing a chair in her path, much to the indignation of other youngsters present.

Janet states her goals concisely: "To help children live more worthwhile lives . . . to make the program broad enough in scope to let them express themselves by playing or singing, for music is a morale build-

er." Her program is conducted on a voluntary basis with sessions on Thursday and Friday nights and individual instruction in piano, voice, violin, autoharp or almost any instrument in which a child expresses interest. There are musical quizzes, movies with musical background and information on various composers, and records of both "long hair" and popular artists. Testing programs for rhythm are also conducted by use of the autoharp, which allows one with ability to progress rapidly. A program is also being set up whereby the children make many of their own instruments. Though never taking over the work of counselors or psychologists, Miss Lindecker has discovered that children at a piano often are in a mood to pour out their troubles to her because they feel she is a friend. In group work the principle of reaching a child at his own level is used. If the group is in a state of excitement, the programs begin with spritely music, gradually taming down. If

the group is depressed, she will start with a sad song, working into a gayer mood.

Few persons are aware that the therapist herself must prepare painstakingly for each program, memorizing note by note the music she cannot see. Individual lessons also are learned by memory, a jump ahead of the student.

Miss Lindecker, who is perhaps the only musical therapist to teach children in a detention home, frankly admits she is "feeling her way" in a highly experimental field. Sometimes her programs are highly successful, depending upon the reciprocity of the group; then again, there may be minor behavior flare-ups which necessitate the dismissal of the group for the evening. It is through work of this nature that musical therapy, as a field, is given an opportunity to expand and to prove its value as "the universal language for reaching soul and spirit."—*Toledo Times*, Toledo, Ohio, Oct. 13, 1952.

The Pride of Mu Phi Epsilon

MARY MARGERY COURSE
HOENACK

△ MARY MARGERY COURSE HOENACK isn't one to sit back when she feels something needs doing. And when her children started attending the Montgomery County schools, she began to realize what an inadequate music program was being presented in those schools. She began talking with other parents and organized meetings of people interested in the development of a better music program. The

Administrative Assistant to the Superintendent in this Maryland county attended some of these meetings, as did some of the music specialists in the school system. These meetings took place between January and April of 1952, and in April a group of parents representing seventeen schools organized themselves into the Parents Committee for Music in the Montgomery County Schools. Groups from thirteen other schools indicated a desire to work with the committee and did so subsequently.

(CONTINUED ON PAGE 12)

1953 Original Composition CONTEST

Deadline: June 1, 1953

Judges to be announced later.

By ELVA McMULLEN GAMBLE
National Second Vice President

THIS Contest shall consist of three divisions, as follows:

DIVISION I:

MRS. H. H. A. BEACH MEMORIAL AWARD—Open to former FIRST PRIZE WINNERS ONLY. TWO compositions, regardless of category, may be entered by any former first prize-winner. Former prize winners are eligible to enter **Division I only.** AWARD—\$50.00

DIVISION II:

Open to **Undergraduates only**—
CLASS A: *Chamber Works*—5 minutes or more, in any form for one or more instruments, or any combination of instruments and/or voices. AWARD—\$75.00

CLASS B. *Short Works*—Songs, short pieces for one or more instruments or voices. AWARD—\$50.00

DIVISION III:

Open to all other members of Mu Phi Epsilon, including alumnae, graduate students, and faculty members of active chapters—

CLASS A: *Orchestral Works*—6 minutes or more, in any form for large or small orchestra, with or without voices. AWARD—\$100.00

CLASS B: *Chamber Works*—5 minutes or more, in any form for one or more instruments, or any combination of instruments and/or voices. AWARD—\$75.00

CLASS C: *Short Works*—Songs, short pieces for one or more instruments or voices. AWARD—\$50.00

The MU PHI EPSILON LOVING CUP will be awarded to the **Chapter** of which the winner of the best compositions submitted in **Division II** is a member. This shall be held by the **Chapter** until the next Contest.

RULES

1. All contestants must be duly initiated members of Mu Phi Epsilon.
2. All manuscripts must be in the hands of the National Second Vice President, Elva B. McMullen Gamble (Mrs. Eugene E.), 9333 South Hamilton Ave., Chicago 20, Illinois, not later than June 1, 1953. **Return Postage Should be Enclosed.**
3. Only unpublished compositions may be submitted. Composers of songs and choral works must indicate that they have secured permission from authors of texts before submitting compositions.
4. Not more than one manuscript

in each class may be submitted by any one contestant with the exception of DIVISION I. Former first prize winners are eligible to submit not more than two compositions of any category in DIVISION I. Former prize winners are eligible to enter **Division I** only.

5. Manuscripts must be neatly and legibly written in ink.
6. Each manuscript must be marked with title, performance time, nom de plume, Division (I, II or III), and Class (A, B, or C).
7. Each manuscript must be accompanied by a sealed envelope containing composer's name, nom de plume, name of original chapter of initiation, present affiliation, and full address where she can always be

reached. The envelope must be marked on the **outside** with same information as rule 6. If this information does not appear on the manuscript and outside of envelope, composition may be eliminated from the contest. The envelope will be held in the Office of the National Second Vice President until after the reports—made by titles only—of the judges have been received by her.

8. Prizes may be withheld if, in the opinion of the judges, none of the compositions submitted is of caliber warranting an award. The decision of the judges will be final.
9. Whenever possible, prize winning compositions will be given a public performance at the next National Convention.

Pride of Mu Phi Epsilon

(CONTINUED FROM PAGE 10)

It is impossible to go into great detail here concerning what took place next. An over-all survey of just what music facilities were provided and of what the music program consisted was made, results tabulated, conclusions drawn, and recommendations made. Then Margery compiled the report and presented it to the County Council of PTAs which sent it to all schools and to the Superintendent of Schools and the School Board.

Margery lists the results so far: A Supervisor of Music for the county; a Supervisor of Instrumental Music; one more music specialist hired and others expected soon; music committees organized in at least 30

schools; various group piano classes, music clubs, instrument-borrowing programs, children's concerts, music festivals—all sponsored and set up by parents with the idea of showing their importance and getting them into the curriculum at a later period; monthly meetings between the music supervisor and parents.

Margery is very modest about her part in the whole business, but we are proud of her for starting such an important ball a'rolling. Though she has relinquished her leadership of the group this school year, 1952-53, she keeps in close touch.—BETH WILSON THEWLIS, *Washington, D. C., Alumnae Chapter.*

★ MORE JEWELS ★



Epsilon Rho Chapter at Montana State University

... in Our Crown ...

EPSILON RHO AT MONTANA STATE

△ EPSILON RHO CHAPTER at Montana State University was installed on November 15 by Eleanor Hale Wilson, First National Vice President, assisted by Adele Ratcliffe, National Chairman of Ritual, Seattle Alumnae; Ruth Sampson Ayers, president Spokane Alumnae; Gwendoline Harper, faculty adviser to Epsilon Iota, Cheney, and two active members from Epsilon Iota, Lenore Howell and Joyce Bippes; and Laurel Johnson (Mrs. Keith P.) from Butte, Montana, a graduate, of

Mu Zeta. Pledging ceremonies took place on Nov. 14 at the Delta Gamma House, examinations were given on the morning of Nov. 15 and the Initiation and Installation ceremonies took place later that afternoon at the home of Mrs. Bernice Ramskill, a member of the faculty. On that evening guests and members were entertained by the play, "Androcles and the Lion" which was given by the Montana State U. Drama Department. On Sunday morning a model business meeting

was held together with a discussion of purposes and possible projects for the sorority. A formal recital was held on Sunday afternoon, which was followed by a reception for guests and members in New Hall Lounge. Guests included members of the music faculty, members of Phi Mu Alpha Sinfonia and the special guests directly connected with the weekend activities.

Officers and members of Epsilon Rho are: Stella Critelli, president;

Jane Valentine, vice president; Donna Larson, recording secretary; Virginia Balkovetz, treasurer; Delores George, corresponding secretary; Marlene McKinley, alumnae secretary; Carol Critelli, historian; Betty DeJarnette, warden; Karen Whittet, chaplain; Marajean Bridenstine, chorister; Jeanne Couture, Pat Fraher, Nadine Genger, Berta Huebl, Pauline Oberg, and Arlene Werle.—CAROL CRITELLI, *Historian*.

MAUMEE VALLEY ALUMNAE CHAPTER



△ THE installation of the Maumee Valley Alumnae Chapter was held June 20, 1952, in the home of Esther West, following a dinner at the Toledo Club. Ave Comin Case, former National President, from Ann Arbor, was the installing officer. Bernice Oechsler, National Executive Secretary-Treasurer, and other members of the Toledo Alumnae Chapter also joined us on this important occasion.

An outstanding musical program followed the installation ceremony.

Rose Bruno, contralto, sang songs by John Jacob Niles and Saint-Saens, with Marana Baker as her accompanist. Janet Rankin, pianist, played numbers by Brahms and Rachmaninoff. Florence Miller, violinist, accompanied by Patricia Sourenne, played "Reflections," written for this occasion by Patricia.

Many members of this new chapter were members of Epsilon Chapter, which was installed in Toledo in 1905.—RUTH HICKERSON, *Historian*.



Eugene Alumnae Chapter of Mu Phi Epsilon was installed on May 2, 1952. Front row, left to right (officers): Roxanna Waldorf, chaplain, Dee Davidson Sigwart, treasurer; Constance Baxter Bittner, president; Eleanor Hale Wilson, installing officer; Mollie Small Hardin, recording secretary; Eunice Maier Macke, corresponding secretary; Nelle Murphey Dickson, vice president. Second row, left to right: Jane Thacher, Mary Kapp Allton, Hazel Phillips Kagy, Marjorie Scobert Wilson, Kathryn Orme Asay, Gwendolen Lampshire Hayden, Wanda K. Eastwood, Doris Burch Saunders, Ruth Hoover Nerbas, chorister. Third row: Bernice Grandquist Lomax, Rose Davenport Stacks, Frances Douglas Pickett, warden; Margaret Zimmerman Anderson, Rachel Mowry Reilly, Geraldine Hawkins Fisher, Betty Jean Revell Cornell, Juanita Oskins Rankin, Barbara Heartfield Dieterich, Constance Riddell Elkins.

EUGENE, OREGON ALUMNAE CHAPTER

△ DURING a brief but impressive candlelight installation ceremony on Friday evening, May 2, 1952, in Gerlinger Hall on the University of Oregon campus, the former Eugene (Oregon) Alumnae Club became the Eugene Alumnae Chapter of Mu Phi Epsilon. Eleanor Hale Wilson, National First Vice President, came from Seattle to be installing officer.

The entire day was a busy one for the 30 members of the new chapter. First actives (members of Nu Chapter) and alumnae entertained the

patronesses and Mrs. Wilson at an afternoon tea. Then we celebrated at a formal banquet at the Eugene Country Club, at which time Dr. Theodore Kratt, dean of the University of Oregon school of music, and Mrs. Kratt were guests of honor. The impressive installation followed, during which service Mrs. Wilson was assisted by two of our members: Nelle Murphey Dickson, a charter member of Nu Chapter back in 1913, and Jane Thacher, past national musical advisor to the sorority.

Finally, members of the new chapter presented a musical program—something we do often, as we are definitely a performing chapter, and raise money annually for scholarships through radio broadcasts and concerts. Our members have formed a quintet (strings and piano), a violin quartet, vocal trio, and piano duo, in addition to having solo singers, pianists, violinists, organists, a clarinetist, and a harpist. Our installation program included “Le Plus que Lente” (Debussy-Heifetz) by

Molly Bob Small Hardin, violin, Kathryn Orme Asay, piano; “Were I the Flaming Sun” (Lassen) and “The Witches’ May Song” (Rachmaninoff) by Margaret Zimmerman Anderson, soprano, and Mrs. Asay, piano; First movement of “Quintet in A Major” (Dvorak) and Prelude from “Le Creation du Monde” (Milhaud) by the Mu Phi Epsilon Quintet, Mrs. Hardin, violin, Constance Riddell Elkins, violin, Gwendolen Lampshire Hayden, viola, Roberta Spicer Lathrop, cello, Mrs. Asay, piano.

MIAMI, FLORIDA ALUMNAE CHAPTER



△ AFTER a year's efforts to get organized, the Miami Alumnae Chapter of Mu Phi Epsilon was installed on March 29, 1952. Following a short business meeting, we literally fired questions at our handsome National President, Ruth Row Clutcher, whom we were fortunate

enough to have as installing officer. We had already had one session in November with Eleanor Wilson, who gave us our first enthusiasm; and Ruth Clutcher, besides delighting us with her warm, friendly personality, allayed most of our fears and resolved many of our problems.

The gracious house of Athena Henkel Pitt, our Treasurer, made a perfect setting for the short but impressive ceremony of installation,

which Ruth conducts so beautifully. We all enjoyed a delicious dinner afterwards, perhaps more so because we had by unanimous agreement dispensed with “toasts,” etc. A short program followed, which included a group of songs by Louise Titcomb, accompanied by Fern Sherman; piano solos by Caroline Hayman and Mary Ellison; dances by Seda Khoyan; and a cello solo by Pat Bidwell, accompanied by Caroline Hayman.

ROCHESTER, N. Y. ALUMNAE CHAPTER



Rochester Democrat Chronicle, Nov. 10, 1952

△ THE most outstanding event in the Rochester Alumnae Chapter in many months was the installation of the Chapter by Ruth Row Clutcher and Kay Shirley on Saturday evening, Nov. 8, when the Alumnae Club became a Chapter after several years of Club status. Mrs. George S. Babcock, president, entertained Ruth and Kay as house guests following

the installation service at her home. New Officers for the year are: Frances DeWitt Babcock, president; Doris London, vice president; Har-

riet Johnson Byquist, secretary; Mildred Randall Stalker, treasurer; Grace Massey, chaplain and warden; and Margaret Gilbert, historian.—
RUTH WATANABE.

FORT WORTH ALUMNAE CHAPTER

△ FORT WORTH ALUMNAE CHAPTER was officially installed on the evening of February 29, 1952. Installing officers and special guests were Ruth Row Clutcher, National President; Olive Galloway Williams, National Third Vice President, and Kay Shirley. The following members were installed at that time:

Mmes. Clint Blackman, Winston C. Turbeville, T. Smith McCorkle, Vivian Harder Johnson, Laura Nell Mitchell; Misses Jeannette Tillett, Wanda Nelson, Jean Wessler, Laura Coupland, Edith McLeod, Ann Kammer, Kitty Neighbors, Hester Young, Lovey Cooper and Doris Jane Ray.

Phi Iota at Homecoming . . .



△ THIS float was used in Concordia College's Homecoming parade, Oct. 18, and was made by the girls of Phi Iota with the help of Betty Strand of the Art Department of the College who is also a patroness, and Wayne Wagstrom, a patron. It featured the purple and white Triangle and lettering of Mu Phi Epsilon and was covered with artificial grass and bound with purple and white satin ribbon, on which

was painted the lettering: "Mu Phi Epsilon, National Music Sorority." The girls held lyres and flutes and were gowned in white choir robes tied with purple satin ribbon. They wore wreaths of violets in their hair. Opal Mathsen, President of Phi Iota, stands in the center with the big lyre and the other actives appearing are: Sylvia Moe, Beverly Midboe, Margaret Huslegard and Monica Wildfang.

ANNUAL AWARDS

June Stokes Wins Outstanding Senior Award

△ JUNE STOKES, Mu Theta, received the annual Scholarship cash award of \$50.00 granted to the outstanding senior of the year among all chapters of the sorority. June, an outstanding pianist, played with the Houston Symphony Orchestra on two occasions before entering the University of Texas. These took place in January, 1944 (student concert series) and August, 1947 (summer series, as a result of winning first place in the Houston Symphony contest). She also won third place in the statewide piano contest in 1945. June began her piano study with Mrs. A. H. Riess of Houston, and later studied with Alvino Torres, also in Houston, and now studies with Daries Frantz at Texas University. After entering the University, June won the Minnie Sneed Wilcox contest in Austin in 1950 and performed with the Austin Symphony Orchestra. She also won one of the Dallas Civic Federation Contest Awards in 1950 and was presented in recital in Scott Hall in Dallas in 1951. She also won the Mortarboard Sophomore Scholarship cup in 1950. June is also a member of Alpha Lambda Delta, winning their 1952 Scholarship Award, the Sidney Lanier Literary Society,



President of Mu Theta of MΦE for 1952-53, President of Pi Kappa Lambda for 1952-53, and graduated in June, 1952, with highest honors and the Mu Phi Epsilon Senior Award.

Honorable mention was given to Joan Howie, Mu Rho, and Carol Eagle, Gamma. Joan is graduating this December from the University of Denver with a B.A. degree with a major in music. She is in her third year as a member of the violin section of the Denver Symphony Orchestra and this year started teaching violin at Denver University. Joan was President of Mu Rho Chapter in 1951-52 and, in October, was one of the soloists in a performance of the Vivaldi Four-Violin Concerto with the Denver Symphony.

1st

Marie Morrissey Keith Award Goes to Phi Theta at Lindenwood

△ THE newest Mu Phi Epsilon award, the Marie Morrissey Keith Chapter Scholarship Award of \$100.00, was presented to Phi Theta Chapter at the 1952 Convention.

This award is given annually to the chapter showing the greatest improvement in chapter scholarship average over the previous year. Most of our chapters have shown a keen interest in this contest and Phi Theta is to be congratulated upon their winning over so large a group of contestants.

This chapter showed not only the greatest improvement over the previous year, but also headed the list of the five chapters having the highest scholarship averages in the sorority.

The honor of having the five highest averages goes to Phi Theta of Lindenwood College, St. Charles, Missouri; Mu Epsilon at MacPhail College of Music, Minneapolis; Mu Tau, at the University of South Dakota, Vermillion; Upsilon at the Cincinnati Conservatory of Music; and Tau at the University of Washington, Seattle.

The purpose of the Marie Morrissey Keith Chapter Scholarship Award is to encourage the maintenance of the same high standards of scholarship required for entrance into Mu Phi Epsilon.

The award was named in honor of our outstanding member Marie

Morrissey Keith "in recognition and with profound appreciation of her achievement in fostering and maintaining national interest in the field of music which has reflected credit and honor upon the sorority."

Patricia Stenberg Wins at Interlochen, Mich.



△ THE Mu Phi Epsilon Scholarship for 1953 camp fees at the National Music Camp, Interlochen, Michigan, was won by Patricia Stenberg, 17, oboe player from Rives Junction, Michigan. She was named winner of the highest honors and awards from an enrollment of nearly 1,600, and won the Mu Phi Epsilon award on the basis of musicianship, character, and leadership. Patricia had the privilege of being a member of the select Honors Orchestra—Interlochen's top symphony group. Last year she was the recipient of the Foster Foundation Scholarship enabling her to study at Interlochen.

PORTLAND CHAPTER

Awards

\$100 Scholarship

to

TANA BAWDEN



△ YOUNG 18-year-old Tana Bawden of Portland, Oregon, has been awarded the Mu Phi Epsilon Scholarship of \$100.00 for this year. Each year the Portland Alumnae Chapter awards this scholarship to the winner of their young musicians' competition. The only stipulation as to its use is that it be used to further the winner's musical education. Tana is studying piano with our own Nellie Tholen whom she started with at the age of five.

Winning contests is no new experience for Tana. She has been consistently winning competitions and awards for years and is an old hand at such an activity. When she was 10 years old she won the contest to appear as soloist with the Portland Junior Symphony. She has won all the open contests of the Oregon Music Teacher Association's Festivals and last spring at the British Columbia Festival in Vancouver, B. C., she won first place in all five open competitions. She recently gave concerts in Mt. Vernon and Bellingham, Washington. At present Tana is freshman at Lewis and Clark College here in Portland.

As is customary, the winner of the scholarship is the first artist presented on the Mu Phi Epsilon Morning Musicale Series and so Tana opened our 1952-53 season last November.

The Series of three concerts is presented each year by the Portland Alumnae Chapter for its cultural interest, to present the scholarship winner in recital and (very important!) as a means of raising money for the Scholarship Fund. Two artists appear on each program and all are artist members of Mu Phi Epsilon who donate their services. Those appearing on the Series this year besides Miss Bawden are: Dorothy French, contralto, Catherine Peterson, violist; Anne Hopper Olsen, pianist; Marie Rogndahl Peake, soprano; Marilyn Reifsnnyder, violinist, and Elizabeth Bell, violinist. The Series is under the management of Jane O'Reilly.—PEARL ALLISON PETERSON, *Historian*

INTERLOCHEN DEDICATION

BY LUCY SELDEN MILLER,
Chairman, Sterling-Mathias
Memorial Dedication

△ As we stand at the very door of the 50th year of Mu Phi Epsilon, it is "altogether fitting and proper" that the dedication of our Sterling-Mathias Memorial Scholarship Lodge should be the opening peal of our Golden Anniversary changes.*

We are all eager to attend the dedication weekend or some part thereof: to listen to inspired melody composed by our sister Dorothy James for the radio broadcast Sunday concert; to know the spirit of friendship which is the very life of Interlochen; to live for a few short hours in intensified harmony with our sisters and the young people at the camp; to pay tribute to those courageous souls, the charter members of our Alpha Chapter, who were not afraid to undertake a great venture in Faith, Hope and Love.

The National Music Camp at Interlochen (named for the resemblance someone saw to the famous Swiss resort) is set in a beautiful area of pine forest in the northwest part of Michigan's lower peninsula. The lapping of water on the shores of the "lakes" and the wind whispering in the branches of the evergreens made nature's music before men brought manufactured instruments to join the symphony.

*Changes is the name given to the order in which a long peal or composition for bells is rung.

△

Lucy
Selden
Miller

Plan NOW to attend the Dedication Weekend at Interlochen, July 18-19, 1953. Arrive in time for luncheon Saturday, attend the Mu Phi musicale Saturday evening, the Dedication Service Sunday morning, and the broadcast Sunday afternoon. Swim, stroll in the woods, attend the student recitals and concerts, visit with your Mu Phi sisters—steep your souls in the heady atmosphere of inspiration there. It will be an unforgettable experience!

Make it a family holiday. There are plenty of hotels, motels and tourist accommodations nearby, and a State Park right next to the camp where lucky owners of trailers and tents may stake out. Details of the program must wait for the next issue of THE TRIANGLE. But fill in the reservation blank and mail with your check to Mrs. Martin A. Miller, 12860 West Ten Mile Road, South Lyon, Michigan, just as soon as you can. (See page 39 for Reservation Blank.)



Historians Reporting

△ △ Atlantic Province △ △

CONNECTICUT VALLEY ALUMNAE CLUB is just a year old and we feel we've made real progress. We have a wonderful group of members. To begin at the end of the year, we had our second annual summer party at the beautiful summer home of Helen Lyon Jones (Washington Alumnae Club) at Richmond, Massachusetts, on July 27. After a delicious picnic lunch up by the pond, we all went over to Tanglewood for the Concert, which was very fine. (Won't go into the program from the critic's standpoint—space does not permit that). It is a delightful occasion for all of us, our husbands and families, and, as always, Helen is a charming hostess.

The officers for the coming year were elected for a second term at the Annual Business Meeting, with Alice C. Hansen (Hartford) again President.

During the year many of our girls have performed in their various home communities, and we can only mention these. Dorothy Guion (Springfield, Massachusetts) gave a lecture-recital on "How to Listen to Contemporary Music" for the Springfield Women's Club. Elizabeth House (Fairfield) played several times in Bridgeport; Mary Frances Reid (Wallingford) played for the Women's Republican Club; Virginia Patton (Hartford) played for the Hartford Musical Club and for the D.A.R.; Madelyn Robb played for the Musical Club also, and for several programs at the Hartt School; Grace LaMar Edgar gave several programs in Westport and was soloist for the "Elijah"; Alice Hansen played for the Memorial Service for King George at Christ Church Cathedral in Hartford.

In addition, we have had excellent monthly programs for ourselves, hearing almost our entire membership during the year. We continue to add new members, and our Club now numbers 20.—MARY WHEELER, *Historian*.

PHI UPSILON began its activities on Sept. 17 with a supper meeting at the home of our president, Evelyn Castoldi, at which we set up our program and discussed plans for the year. The first event on our calendar of activities was a Coffee Hour on Sept. 30, given for those girls eligible for membership. On Oct. 10, we pledged 14 girls which together with four girls pledged last spring, makes a total of 18 pledges. The pledges will present a concert at the College of Music on Nov. 12. On the evening of Nov. 14, Mu Phi Epsilon and Phi Mu Alpha Sinfonia will join forces for their annual dance to be given in the Surrey Room of the Hotel Touraine in Boston. A tea and concert given by Beta, Boston Alumnae, and Phi Upsilon Chapters will take place on Sunday afternoon, Nov 16, at the Hotel Beaconsfield.—RENEE JOBERT, *Historian*.

WASHINGTON, D. C., ALUMNAE and the ΣAI Alumnae Chapter were co-hostesses at a luncheon meeting of the Professional Panhellenic Association of Washington, D. C., on Oct. 18. On the program a group of original songs by Helen Marcell Bellman was presented and nicely received. Ruth L. Morgan authored the words for one of the songs and the complete group was sung by Loretto Vallem Bue. During the year a series of Sunday afternoon musicals is being sponsored at the Washington International Center by the Women's Committee of the National Symphony. On Nov. 2 our alumnae chapter was hostess. Helen Bently Orbison played several piano numbers brilliantly as always, and also accompanied the violinist on the program. We celebrated Founders' Day on Nov. 8 at the beautiful Wilmington, Del., home of Helen Lyon Jones. Helen had invited us all for lunch so we chartered a bus and 25 of us went from

Washington. There were also several Mu Phis from Wilmington present. Frances Lehnerts (from New York) was in Wilmington to fulfill several singing engagements, and she sang for us in spite of a bad cold. Helen then took over and told us about her recent trip to Norway, Sweden, and Finland. Her talk was very interesting and she had many delightful souvenirs to show us. We all had a wonderful time. A complete program of original music by Benita Crowe was presented on Dec. 13 at the University Women's Club of Washington. Ruth L. Morgan sang two groups of songs and Benita played some of her piano compositions. Incidentally, Benita was recently elected a member of the Board of the Metropolitan Opera Company.—**BETH WILSON THEWLIS**, *Historian*.

NEW YORK ALUMNAE CHAPTER opened its fall meeting with Merle Montgomery, President, presiding, by requesting that each of those members in attendance rise, introduce herself, and name her original chapter . . . in this novel fashion each of us realized once again how far-flung is our Sorority and how New York is the meeting place of so many of our Sisters at one time or another in their musical lives. We were of course terribly impressed with the enthusiastic report of the Convention, given by Merle Montgomery, Doris Freichs, and Gertrude Otto. And to find that Gertrude Otto has been named National Fourth Vice President—this was the frosting to top our cake. Gertrude's initial national report appeared in *THE TRIANGLE* for November, 1952. Plans for programming this season, under the able direction of Ruth Bradley Jones include *Music of the Americas*. Elizabeth Ball Kurz again heads the WNYC monthly broadcasts, which she so ably created, and wonderful plans and dreams for the American Music Festival in February are afoot. Please, oh please, you gals throughout the land—when and if you plan to come to New York, **LET US KNOW**. A note to Merle Montgomery, care of **CARL FISCHER** will give us a chance to greet you, to meet you, and possibly to be of assistance in your work here.—**RUTH KOBART**, *Historian*.

BOSTON ALUMNAE CHAPTER'S first fall meeting, Una Allen presiding, was held at the home of Ruth Birch. A large and enthusiastic group enjoyed Geraldine Stone's report on Convention and Rose Bongiovanni's account of her trip to France and Italy. Coming home on the Ile-de-France, Rose attended a concert given by Artiss de Volt. Plans were discussed for Founders' Day and we are hoping at that time to meet Doriot Anthony, who has achieved the unparalleled distinction of being the first woman to hold a first desk position in the Boston Symphony Orchestra. A luncheon, held at the China House the first of August to welcome Gerrie and Alice Melville back from convention, was well attended. Una Allen, Harriet Harlow and Frances Ruggiero attended Marian MacDowell Day held in Peterborough on Aug. 15. They enjoyed seeing our National President, Ruth Row Clutcher and Katherine Shirley among the notables present. We are indeed proud of Virginia Cochrane, who appeared again as soloist with the Boston Pops Orchestra this summer.—**FRANCES EATON RUGGIERO**, *Historian*.

EPSILON NU is engrossed in a full schedule of musical activities for this year. On November 20, the chapter presented an evening concert for the Morgantown Women's Music Club. The program included two selections by our newly formed triple-trio. In early November, in the Student Chapel of Wesley Methodist Church, Morgantown, West Virginia, EN pledged three music majors to membership in Mu Phi Epsilon. They are Mary Virginia Monroe, Alice Roush, and Betty Jo Thorne, all pianists. A "Get Acquainted Coke Party" was given for the freshmen women and transfer students in the West Virginia University School of Music. In honor of Founders' Day, our Faculty Advisors, Mrs. Elizabeth McEnney and Mrs. Joseph Pestun, gave a banquet for the patrons, the active members, and the new pledges. Our chapter is now engaged in presenting, on every other Sunday, a 15-minute program of classical music, which can be heard over WAJR, the local affiliate of the Mutual Broadcasting Company. Members appearing

as soloists for School of Music Convocations this semester are Betty Riggensbach and Nancy Lowe Norman.—**MARY JANE BROWN**, *Historian*.

MU CHAPTER at Brenau College, Gainesville, Georgia, is helping with plans for celebrating an unforgettable year, the 75th Anniversary of Brenau College. Another highlight was a recital by Eliza Holmes Feldmann, a lifelong friend to the music students and a guiding light to all of us. Even though our chapter is small in numbers, we have many great plans for this year. We have begun work on the magazine sales and hope to have a big order at the closing date. Our president, Barbara Huie, has been a great inspiration to Mu Chapter since

she attended the National Convention. Through her we have found many helpful ways of bettering our chapter. We sold concert tickets for Atlanta Concert Series here at school and, through this, stimulated interest in the music field. This year two seniors, Barbara Huie and Jackie Haged, are giving their senior recitals. We are sorry that they will be leaving us but we are proud of them since they represent us. Here at Brenau they have received the highest honors of the school, HGH, a secret honorary organization, plus serving on Student Government and many other associations. We have many plans for the coming year and since we are all very anxious to see our chapter built up, our hopes, dreams and plans will not fail us.—**GERALDINE STONE**, *Historian*.



Great Lakes Province



PHI SIGMA CHAPTER held the initiation of new members on Oct 19, at the home of Mrs. Arthur C. Becker, faculty adviser. The new members admitted are: Phyllis Slepicka, Pat Wilder, Barbara Butler, Loretta Lisenby, Caroline Willoughby, Adele Bykowski, Jacqueline Nelson, Rosemary Schmitt. A program was given afterward and refreshments were served.

On Oct. 24 Phi Sigma held its annual scholarship concert which turned out a success in every way. On the program was featured Rosemarie Intrieri, a 14-year-old pianist who has appeared in many Chicago Fair appearances and television programs. Rosemarie appeared with the Chicago Symphony on Nov. 4. Also presented for the evening was the Do Re Mi Ferber Trio. These talented sisters are members of the student body of De Paul University and presented a most enjoyable program of cello, viola, and piano selections. The program was presented in the Recital Hall of the school where refreshments were served after the program.—**AUDREY NOWACKI**, *Historian*.

SIGMA CHAPTER is busy making plans for our annual scholarship benefit concert to take place sometime next

quarter. In addition, Barbara Fleming, pianist, will represent Mu Phi Epsilon when we join the Northwestern chapters of Sigma Alpha Iota, Delta Omicron, and Phi Beta in a Professional Panhellenic solo class for the school of music, the early part of December. The chapter has also formed a small chorus, and we plan to sing Christmas carols at various hospitals in the Chicago area. The Fine Arts Quartet is in residence here at Northwestern this year, and we are ushering for all their performances, as well as for all the faculty and orchestra recitals. Several of our girls are also taking part in the mixer for all the Chicago area chapters of Mu Phi Epsilon on Founders' Day.—**ELAINE RYBACK**, *Historian*.

IOTA ALPHA has had a very busy fall and we hope for increased activity as the school year progresses. Two rushing parties were held, the first at the home of our National Second Vice President, Elva McMullen Gamble, and the second was a theatre party at which we saw "The Royal Family." On October 27, a noon recital was given in the Little Theatre of the College at which Lucile Hertel Ringel, contralto, Jean Stern, pianist, and Maryann Kosokowski, so-

prano, performed. On Nov. 18, we sponsored a freshman women program, featuring Janice Harbison and Joyce Coash, piano for four hands, Selina Rosen, cellist, Lorraine Shultis, tuba, and Diane McDonald, harpist. On Dec. 16, we sponsored a Chicago Musical College Composer's concert, presenting the works of Willard Straight and Richard Faith, their piano and vocal music. Future plans call for a Ganz Recital in January in collaboration with Phi Mu Alpha Sinfonia. This program will feature the songs of Dr. Ganz, his piano works, and the Percussion Me'lee. Jean Stern, pianist, appeared with the Chicago Symphony on October 22, on WGN-TV. Elaine Cray, pianist, has appeared on the advanced student recital series at the College, the Chicago Public Library concerts, and the YMCA concert series, as well as teaching two days a week at the Rizzo School of Music. Lucile Hertel Ringel, contralto, appeared as soloist with the Rogers Park Chorale in May in their presentation of "Elijah" and again with the Francis Parker High School Chorus and Orchestra, as soloist in their performance of "Elijah." She is also a member of the John Halloran Choraliers who presented Honegger's "Jeanne d'Arc" in Orchestra Hall, Dec. 16.—**LUCILE HERTEL RINGLE**, *Historian*.

CHICAGO ALUMNAE CHAPTER opened its 1952-53 activities at Hawthorne Ranch, the home of Cora Knapp. In October we met with Rose Warinca. Founders' Day was celebrated by a "mixer" at the De Paul School of Music. We were assisted at this celebration by the North Shore Alumnae Chapter and all of the active chapters were guests. Our National Second Vice President, Elva Gamble, addressed us and as a tribute to Mrs. MacDowell, a very interesting tape recording of her voice was heard. This was a recorded interview made this past summer by Philip Maxwell. A gift of \$9.50 was given by us for Mrs. MacDowell's birthday party. When this letter goes to press we shall have had two more meetings—Nov. 19 at Charlotte Johnson's and Dec. 19 at Helen Maxwell's. We have plans for a future rummage sale to benefit Gads Hill. Our present membership numbers

62 loyal and ardent Mu Phis. Stop in and see us sometime and visit Gads Hill.—**CAROLYN S. WOODEN**, *Historian*.

DETROIT ALUMNAE CHAPTER held its first fall meeting at the home of Dorothy Dorjath, our president. Dorothy highlighted the evening by giving us a very enthusiastic account of the happenings at the convention in Minneapolis this past summer. Anne Keppel, as our new program chairman, is doing an excellent piece of work planning the musical portions of our evening meetings, and at the conclusion of our musical programs we often sight-read three or four secular selections. The girls feel that this is not only an entertaining but worthwhile project. Hilda Humphries has not only favored us with her vocal selections, but is directing a vocal ensemble within our group. The ensemble meets once a week at Anne Keppel's home, and is doing a very outstanding piece of work. Margaret Pyle is busy at this moment with last-minute preparations for our Founders' Day celebration. This year we are having a Founders' Day Concert which will be open to all Mu Phis and their friends. Participating in the concert will be Betty MacKenzie, soprano; Marjorie Bernat, violincello; and Ruth Dayer, piano. To conclude the concert, Hilda Humphries will direct our newly organized vocal ensemble in several selections. Dorothy Sedick and Helen Grannis will be the accompanists for the evening. Our main money-maker project for the fall has been a rummage sale, and due to the untiring efforts of Viola Sagel and the splendid coöperation of all the girls, our net profit was approximately \$200.—**DOROTHY SEDICK**, *Historian*.

MU PHI CHAPTER took a pledge class of six into their number on November 17. Our fall schedule also includes the sponsorship of a concert by Michael Heed, a contemporary English composer. He is very versatile, being a singer, pianist, and composer in a single performance. He has mastered the art of accompanying his own singing and will include on his program many of his own songs and songs by Benjamin

Britten. We have received with pleasure the acceptance of our new patroness Mrs. W. P. Jennings. She is very active in the music groups of Cleveland and she will be a great asset to our chapter.—**PATRICIA WAGNER**, *Historian*.

ANN ARBOR ALUMNAE held a district conference in October at the Michigan League, to which 9 chapters were invited. Mrs. Paul Kempf, president of Ann Arbor Alumnae, presided at a 10:00 o'clock coffee hour honoring presidents of chapters at Wayne University, Ypsilanti State Normal College, U of Michigan, and Toledo, Detroit, Maumee Valley and Ann Arbor Alumnae. Ava Comin Case led a roundtable discussion beginning at 11 o'clock. Dorothy Paton was the toastmistress at the 12:30 luncheon and Esther E. Pease, associate supervisor of Physical Education for women at the U of Michigan, gave an address on "Music and Dance." Dr. Louise Ceyler, of the University School of Music, introduced the soloists at the 2:00 o'clock musicale. Participating on the program were Lydia Courte, Ann Arbor, piano; Alice Lungershausen, Detroit, harpsichord; Marilyn Schlichu, Wayne University, flute; Gratia B. Smith, Toledo, piano; Betty Browner, Ypsilanti, soprano; Frances Hanslovski, Ann Arbor, contralto. The committee in charge of arrangements consisted of Mesdames Alfred Neumann, John Kohl, Raymond Kilgour, and Nathan Fairchild. About 100 members attended the meeting. Founders' Day was celebrated Nov. 3 at the home of Mrs. Alex Barry.—**MIRIAM McLAUGHLIN**, *Historian*.

TOLEDO ALUMNAE'S 1952 programs postponed somewhat by travel, illness, etc. consisted of a Seashore Test on Pitch, Rhythm, Harmony, Psychology, and Musical Adaptation by Bess Cunningham. Bernice Oechsler gave a report on a UNESCO meeting she attended in New York, and Mabel Brady reviewed *Life of Arturo Toscanini, the Maestro* by Howard Taubman. Lucile Heer and her husband had a 2-months trip through the west. Darrell Peterson and her husband spent a month in New Orleans, Mexico, and other southern points. Closing luncheon at Inverness in June did not shut off our activities, however.

July 7 we spent at Florence Cramer's cottage at Lakeside—had luncheon and a very interesting report by Norma Emmert of the convention. August found Bess Cunningham, Marie Whelan, Bernice Oechsler, and Ava Comin Case heading for the Maumee Valley Chapter house party at Clear Lake, Ind., for a few days' relaxation. Our program this fall will be on American Folk Music. We have four programs outlined: 1. Folklore that has Inspired Great Music; 2. Folk Music: Traditional, Southern & Mountain Ballads; 3. Western and Spanish Influence; 4. Folk Themes in Music Around the World. Participating in presenting the programs are Bess Cunningham, Ethel Thurston, Bernice Oechsler, Norma Emmert, Mabel Brady, Betty Wright, Darrell Peterson, and Florence Cramer. We had the rare privilege of entertaining our charming National First Vice President, Eleanor Wilson, and her husband at a dinner party at Norma Emmert's home in October. We are joining the Maumee Valley Chapter at dinner Nov. 13 in celebrating Founders' Day.—**MARIE B. WHELAN**, *Historian*.

CLEVELAND ALUMNAE CHAPTER opened the season with a dinner meeting at the home of Mildred Martin Christian. The program consisted of convention reports given by Viola Peterson, Esther Keller, and Miriam Spero of Phi Omicron Chapter. Merle Parker Mitchell gave a piano recital at the October meeting, at the home of Bernice Austin Huestis. A power failure added excitement and dinner was enjoyed by candlelight. On Oct. 25 Frances Koma Kelley represented the chapter at the first district conference, at Westminster College, Warren, Pa. On Oct. 22, the alumnae chapter entertained at a Karamu Theater party, enjoying performances of two operas, "The Lowland Sea," by Wilder, and "Comedy on the Bridge," by Martinu. The alumnae chapter will play hostess to Phi Omicron and Mu Phi chapters at the annual Founders' Day formal banquet, to be held at Masonic Temple, Nov. 13. An interesting program is scheduled, with Marilyn Weaver, soprano, and Marcellene Hawk, accompanist, from Mu Phi; Joyce Dunker, flute, Anne Woehrmann, oboe, and Barbara Klecka, piano, from Phi

Omicron; and an original play about the founding of Mu Phi Epsilon written by Rosaneil Reynolds Schenk, entitled "A Man's Touch," to be performed by Evelyn Treger Morgan, Norine Wines Sharp, Lucile Harley Boros, and Bernice Austin Huestis, of the Alumnae chapter. The chapter is continuing its Music in

Hospitals program under the chairmanship of Mildred Christian and Vera Otto, beginning with a formal concert at State Hospital Nov. 17, featuring Joyce Dunker of Phi Omicron, flutist, Catherine Benson Vieth, accompanist, and Merle Mitchell, pianist.—NORINE WINES SHARP, *Historian*.



East Central Province



PHI THETA CHAPTER entertained the freshman music majors and minors at a tea in the Memorial Arts Building on Oct. 14. A musical program followed a short talk about Mu Phi Epsilon by Peggy Pennel, president.

In observance of Founders' Day, the chapter was hostess at a musical reception to the college faculty and administration. An alumna of the chapter, Harriette Hudson Ritter, participated in the musical program.—MARGARET PFOFF, *Historian*.

MU PI CHAPTER started the year by electing Joan Mack president. On October 19, we entertained the women music majors at a breakfast at which Joy Kaufman sang, and Marian Chapman led in games. That afternoon we were invited to the meeting of the Columbus Alumnae Group. Two of our members, Carolyn Harer and June Dickerson, were on the program. We are now planning our Founders' Day Dinner, a Christmas party for the music department, and an inter-sorority song-fest to be held during Greek Week next March.

We have six new pledges this semester. Four members of our last year's pledge class, Joy Kaufman, Marilyn Schweitzer, Janita Riedel, and Marian Chapman, were initiated into Phi Society, sophomore scholastic honorary, November 3.—MARIANNA REIDER, *Historian*.

COLUMBUS ALUMNAE felt the usual excitement over the September reunion after the summer of the Columbus Alumnae Club at Helen Shaffer's in Grandview. We took this chance to get out of our systems the discussion of vacations, trips, grandchildren, children,

and then settled down to plans for the winter and to hear about Convention from Virginia Payne, Pres. She had brought along her scrapbook and her memories, which we shared and enjoyed vicariously. Our October meeting we felt especially successful musically because it was held at the home of Dorothy Bussard in Delaware, where we have available both an organ and a piano. The program was devoted to Bach. Maude Slawson told in her warm and pleasant way about Bach's life followed by the musical portion: Martha Bowlus playing "Triple Fugue" on the organ; Dorothy Bussard, organist, and Marguerite Gross, pianist, playing from the "Christmas Symphony" arranged by Goldsworthy; Henrietta Phelps, organist, playing "Now Let Us Sing With Joy" and finally June Dickerson, senior, Ohio Wesleyan University, Delaware, Ohio, sang "My Spirit Was in Heaviness." The fall day was superb, the attendance large, and the musical standard high.—DOROTHY KIRN COEN, *Historian*.

UPSILON CHAPTER'S Showboat was the first event sponsored by the chapter at the annual T.G.I.F. dance. The new officers, led by Caryl Jocelyn, president, proved their able guidance to all who attended. This was followed closely by letters of acceptance from Mr. Rudolph Firkusny and Mr. Paul Badura-Skoda and our beautiful installation ceremonies were held on Oct. 15 and Nov. 6. Joann Fuller was joined by Mr. Ronald Sharp in the presentation of an interesting and well performed duo-piano recital on Oct. 20, and one week later Frances Chesson appeared as

soloist with the Conservatory Band. Dr. Scott Houston, head of the theory department, and Mr. Allen Davis, were installed as patrons October 29 and a reception and program followed. Upsilon chorus, wood-wind trio, and duo-piano team joined the chosen soloists to present this program. The first Jane Froman scholarships to be awarded from the proceeds of her concert given here last spring, were given to Robert Kircher and Joyce Albrecht, and the Otto Luedeking piano scholarship was awarded to Ann Gibbons.—HELEN MARGARET PHILIPPE, *Historian*.

CINCINNATI ALUMNAE CHAPTER gathered for the first fall meeting at the home of Catherine Zumbiel. Juicy steak-burgers grilled outside and friendships renewed, made a memorable evening. On Oct. 19 our Sunday group and a good many of the members of the evening group, met at the home of Martha Siefried for dinner and a preview of the exciting pictures our traveling Mu Phis, Olga Prigge, Nell Murphy, and Mary Bennett took in Europe this summer. Dr. Biddle, supervisor of music for the Cincinnati schools and a patron, came with Mrs. Biddle, as our special guests. On Nov. 8, 5 of us traveled to Indianapolis to take part in the Indiana Mu Phi luncheon. Bertha Krehbiel and Laura Neely were speakers on the program. Founders' Day was remembered with a musicale and tea at the College of Music for which Upsilon, Mu Omicron, and our Alumnae joined for an interesting program. Louise Brettschneider and Ellen Laib were our fine representatives. We have a busy year ahead, for Goldie Taylor, general chairman of the National Music Teachers' Conference, has enlisted our aid and Laura Neely, National Chairman of Birthday Observances, says she will keep us busy. We like being busy!—HELEN GRECO.

COLUMBIA ALUMNAE CLUB met September 21, at the home of Dorothy Shofstall Caldwell. Fifteen members were present. After the business meeting, Dorothy Caldwell presented a program of piano music. Inez Bringgold Duck presided at the tea table during the social hour. The annual recital of the Columbia Alumnae Club was held

at 8 p.m., Sunday, Oct. 26, at Christian College. Nesta Lloyd Williams, Sigma, organist, Virginia Babb Sapp, Phi Delta, pianist, Jeanne Stephens Lee, Phi Theta, vocalist, Irma Tholen Wheelock, Xi, violinist, and Inez Bringgold Duck, pianist, presented the program. Margaret Dennis Sheldon, Zeta, a member of the Stephens College faculty, presented a program of vocal music in a concert at the college, Nov. 6. Ruth Goodsmith, Sigma, was granted a year's leave of absence from the Stephens College faculty to teach piano at the University of Redlands, Redlands, California.—DOROTHY J. CALDWELL, *Secretary*.

EPSILON OMICRON greets you! An Introduction to our four new pledges! Marilyn Fissgus, Jean Felix, Wilma Baker and Barbara Belew.

Musical activities thus far: Pat Gamber sang solo with the Brass Choir in Concert on Nov. 3. She also appeared as Nina in "Song of Norway" here at Indiana University this summer. Janice Pearl and Elizabeth Noack Kelle sang Blonde in the "Abduction from the Seraglio," the Spring opera, and Elizabeth sang Claire in "On the Town" this summer. Elizabeth Cecil Krueger sang in Rushville, Indiana, in October. She also sang at the National Convention last June, as did JoAnne Leatherman Hackman. Barbara Hoadley was our business representative. Lillian Miskovich had write-ups in *Musical America* and *Southwestern Musician* in July.—ELIZABETH NOACK KELLE, *Historian*.

KANSAS CITY ALUMNAE'S 32nd season of Morning Musicales got off to a good start on Oct. 7, with a program by Gladys Daniels and Charlotte Garver. Ticket sales are up this year, which means we can give more scholarships. After playing her own Sonata at National Convention, Joanne Baker was invited to play it on an American composer's program in New York. We are happy to welcome Marlys Ann Watters home after a year of voice study in Italy on a Fulbright scholarship. So far this year we have received about six new members who have transferred from other chapters.—MARGARET STANLEY HAMILTON, *Historian*.

ST. LOUIS ALUMNAE, with Theta Chapter celebrated Founders' Day at the Winston Churchill Hotel, Nov. 10. There was a delightful program in costume which was a duplication of the original Founders' Day program of the Alpha Chapter on Nov. 13, 1903. St. Louis Chapters are busy planning their Lenten Musicales which will be held at the Chase Hotel on May 2, 16, and 30. The first program will feature

△ △ North Central Province △ △

EPSILON ALPHA CHAPTER boasts a Fulbright Scholarship winner this year in the person of Nona Mary Allard. A 1950 graduate of the College of St. Catherine, she is now studying mathematics at the University of Amsterdam, The Netherlands. Various activities, besides her studies, include an audience traditionally given by Queen Juliana for foreign students, an extensive tour of the British Isles and the Continent, and the coronation of Queen Elizabeth II next June.

The Schubert Club of St. Paul presents a number of student recitals during the year. At the November 2 program, Joan Shukay performed several Chopin numbers on the piano.

With its second annual buffet supper, the college music club got off to a good start this year. A couple of the Mu Phis provided part of the entertainment for the supper; several Easthope Martin selections were sung by Bonnie Hammond, soprano, accompanied by Donna Welbes.—JOAN SHUKAY, *Historian*.

MU GAMMA members are very excited about our Founders' Day banquet, with a potentially large group of 26 alumnae, 13 actives, and two pledges to attend. Kathleen Wilson, our president, has started us off this fall with her usual enthusiasm and inspiration. Last spring our worst snowstorm of the winter blocked our plans for a concert to be given by Marilyn Schultz, University of Nebraska faculty and Mu Phi Alumnae, and Mr. Dale Gilbert, voice instructor, and wife of Lois Gilbert, also an alumnae. We are now getting ready for this same concert, planned originally to raise funds for our project at Interlochen

composer-pianist Ruth Bradley Jones of the New York Alumnae Chapter as guest artist. The second program will be a costumed recital and the third will have a religious theme. Lenten Musicales are an annual event and the purpose is to raise money for our scholarship fund. We have selected Joan Teichmann, a 16-year-old pianist, as our scholarship recipient for this year.—DOROTHY STEVENSON MILTENBERGER, *Historian*.

Music Camp in Michigan; we hope the weatherman has our interest at heart and will cooperate with us this time. We are still enjoying stories of the National Convention from our two presidents, Alice Bieberstein, Lincoln Alumnae, and Kathleen Wilson, Mu Gamma president.—VITA STONE, *Historian*.

CEDAR RAPIDS ALUMNAE is fortunate to have as new members this year Marcia Hamilton, new member of Coe College faculty, (piano and voice); Ruthmary Needham and Collette Lewis, new instructors in Cedar Rapids schools; Charlotte Lazier of the Marion, Iowa, consolidated school; and Marjorie Christiansen King, vocalist, active in church and radio work. In the enlarged and much improved Cedar Rapids Symphony Orchestra, our Virginia Ohmann Geesaman is concertmistress, and Ruthmary Needham and Kathleen Kahler Rammelsberg are members. Ruthmary Needham, a violinist, also plays with the Davenport, Iowa, Symphony Orchestra. At our Founders' Day dinner Nov. 8, we were told of their musical experiences by Myro Moj dara, a Coe College student from Thailand, Siam; by Collette Lewis, who taught at Boxholm, Iowa, last year; and by Nellie Irwin, patroness, who met Mme. Tetrazinni and other greats. Music was furnished by Luella Lazier and Janet Strang, pianists; Carole Murfield, flutist; Marjorie King, vocalist; and Virginia Geesaman, violinist.—CONSTANCE WATKINS HARDENBROOK, *Historian*.

PHI IOTA CHAPTER resumed its year's activities on Sept. 22 with a most interesting supper meeting at the home of Hildur Shaw. After the business

meeting, Mr. Halverson, an art graduate of Concordia College, who had an exhibition of his paintings in Fargo, gave us an interesting lecture on the relationship of art and music. Plans for the year were made, including a Homecoming breakfast and float for the parade. In November we are having a rummage sale and a public chapel program to introduce Mu Phi Epsilon to the freshman girls. We celebrate Founders' Day with a program and supper and initiation of 12 talented girls. Phi Iota was well represented at the National Convention with 10 members present. The girls brought back firsthand knowledge of the fine work that goes on at a convention and fired us all with renewed enthusiasm to work for our Mu Phi Epsilon.

We are proud of Hildur Shaw who is the new state president of the North Dakota Federation of Music Clubs, and of Viola Anderson, our National Music in Hospitals Chairman, who has been chosen to represent Mu Phi Epsilon at the National Music Therapy Convention in Topeka, Kans. Phi Iota is glad to welcome back two of our members who last year studied with Leonard Shure and attended Western Reserve University at Cleveland. They are Borghild Torvik of our piano faculty and Monica Gebhard Wildfang, a senior. Gertrude Szaroleta, of our piano faculty, is spending this year in New York doing graduate work at Juilliard and enjoying all the fine music New York has to offer.—Thelma Halverson, *Historian*.

OMEGA CHAPTER at Drake University has some very busy and outstanding members: Carolyn Combs is a member of Drake choir, Mu Phi trio, Theta Alpha Phi (honorary drama fraternity), University Chorus, Drake-Des Moines symphony, and received the Drake-Des Moines scholarship award. Maurine Hansen is active in the Drake-Des Moines symphony and the Mu Phi Epsilon string trio. Norma Myhr is soprano soloist in Drake Choir, Mu Phi Vocal Trio, Madrigals, University Chorus and Mu Phi music director. Patricia Noel is President of Omega Chapter, member of Drake-Des Moines symphony and Mu Phi Epsilon string trio. Janice Weir sings in the Mu Phi vocal trio, Drake

Choir, Madrigals, is soloist at First Methodist Church in Des Moines, is a member of the Mu Phi Epsilon string trio and winner of the Mu Phi Epsilon scholarship award and the Presser Scholarship. Sally Wright plays in the Drake band, sings in University Chorus and is rush chairman of Omega. Charlotte Vanicek is organist at Calvary Baptist Church, winner of the Organ Scholarship Award, sings in University Chorus and is historian for Mu Phi Epsilon.—CHARLOTTE VANICEK, *Historian*.

DES MOINES ALUMNAE opened the year with a luncheon on Sept. 13 at Des Moines Golf and Country Club. Motif and program followed the pattern of the convention luncheon planned by our group, including the decorative dolls designed by Mildred Gallatin and executed by our members. These dolls, by the way, were used in a window of our large department store to advertise the membership drive of the Drake-Des Moines Symphony. A two-day rummage sale helped replenish our coffer this fall. We have found this idea the most satisfactory in gaining extra funds. Margaret Davis, violinist, and Lenore Mudge Stull, pianist, have presented their annual recitals at Drake. Lorraine Jones, pianist, also appeared on the series with her husband, Nathan, a flutist and member of the music faculty. Our program is a varied one this year. Regular monthly meetings are preceded by buffet suppers which gives us more time for talk and planning. The patronesses are opening their homes to Omega and Alumnae for a series of Sunday evening musicales. We assisted Omega with rushing and observed Founders' Day with a supper and combined program with the actives. The varied activities of our members are too numerous to mention. Suffice it to say we are all doing something for the betterment of our community musically and for Mu Phi Epsilon.—EVELYN ZIRBEL GALLAHER, *Historian*.

PHI ZETA CHAPTER'S activities began this year with our Homecoming activities. Because of the small membership in our sorority, we have enjoyed cooperating with our brother fraternity in many ways. Our first joint project was the homecoming float. We had the

honor of having our college queen, Mary Claire Gunderson, chosen from our sorority.

Our chapter's next project was to impress the freshmen and transfer students with a tea given at Faith Woodford's home. Miss Woodford was a former member of our chapter. She is an instructor here at present. A short musical program was given.

One money making project was having charge of the food sales at the Phi Mu Alpha's annual college dance, Sinfonia Inn.

Our next endeavor is the annual ensemble recital which is to be given in the very near future.—ALLEEN LINDQUIST, *Historian*.

MINNEAPOLIS ALUMNAE CHAPTER'S fall morning musicale was held at St. Stephen's Episcopal Church in October. The contributing artists were Mr. Henry Kramer, Jr., violinist of Minneapolis Symphony, accompanied by Mrs. Paul Ivory; Patricia Hauke Staubo, soprano, accompanied by Louise Lupien Jenkins, and Lenore Engdahl, pianist. It was a most enjoyable program. Florence Reinmuth and Martha Baker are presenting some programs this fall on local TV stations.—BETTY MINAR, *Historian*.

△ △ *South Central Province* △ △

SALT LAKE CITY ALUMNAE is very proud of its progress. We were organized in the last part of October and started with a group of eleven members which has already grown to eighteen. In September we met at the home of one of our members and enjoyed an all-Baroque program with a beautiful ensemble number played by Charlotte June Burgess, flutist, Norma Lee Madsen, violinist, and Gladys Gladstone, pianist; Gladys Gladstone and Jane Tirey also presented piano solos at this program. In October we had a two-piano program with Norene Rogers and Dwan Young playing selections by Strauss and Mendelssohn, and Joyce Patterson Brown and Janyce Patterson Fisher playing Bach, Couperin, Chopin and Schubert. Founders' Day was cele-

MU ALPHA wound up a successful year with a musicale, presented in the Simpson College Little Theater. Performers were Charlotte Clark, soprano; Marilyn Higen, violinist; Arlene Holmes, contralto; Joyce Fulton and Marleta Hill, duo-pianists; and alumna guest, Marilyn Talbot Kelley, pianist. Initiated Mar. 12 were Jean Blouse, Donna Pace, and Marjorie Varley, all Simpson College music majors, and Dorothy Mumma, special music student. Norman Channel, tenor, was the 1952 winner of Mu Alpha's annual contest for Indianola High School seniors. Highlight of the first meeting of the new school year were the convention reports of chapter president, Arlene Holmes, and music delegate, Marleta Hill. On Sept. 27, Mu Alpha, with the local chapter of Phi Mu Alpha Sinfonia, entertained music students, members of college music organizations, and faculty at a tea at the home of Professor and Mrs. Sven Leberg. Another joint Mu Phi-Mu affair was the "con" picnic on Oct. 9. Founders' Day was celebrated with a dinner at the home of Lucille Snyder Fansher. Initiated that evening were Margaret Harvey, instructor in piano and organ at Simpson, and JoAnn Guthrie. Tentative plans are being made for an all-college operetta, "Down in the Valley," to be sponsored by Mu Phi Epsilon.—MARTHA DINWIDDIE, *Historian*.

brated with the active chapter in the form of a dinner at which time we welcomed six new patronesses: Mmes. A. Eugene Christensen, W. H. Felton, Harold E. Nelson, Jonas Ryser, Spencer Snow, and Miss Becky Almond. Following the dinner a program was given with Charlotte June Burgess, flutist, Marilyn Felt, violinist, and Norma MeLeod, cellist, participating. Norene Rogers was chairman for the evening and Norma Lee Madsen acted as toast-mistress. We have a full year ahead of us and hope to progress even further in membership and activity.—DWAN JACOBSEN YOUNG, *Historian*.

PHI EPSILON is busily at work at the College of Emporia in Emporia,

Kans. Each member has participated in several of the following highlighted events that have been presented by the College thus far this year: the first Vesper Service which featured both the orchestra and the chorale; the chorale's trip to Independence, Kans., where they presented music for the Synod meeting; and also the inauguration service for the new president of the College of Emporia in which the orchestra and the chorale again had a part. Mariette Simpson, violinist, presented her faculty recital on Oct. 21, and the rest of the chapter members will present their junior recitals in February. In December the presentation of Bach's "Magnificat" and Gian-Carlo Menotti's Christmas opera, "Amahl and the Night Visitors," will feature several of our members in solo parts.—MAXINE WHITE, *Historian*.

OKLAHOMA CITY ALUMNAE held their opening fall meeting at the lovely new home of Ruth Petty. Ruth, who was president last year, is president of MacDowell Club this year. Anna Grossman attended the Summer Music School at Aspen, Colo., and was a member of the orchestra. Five of our members are playing in the Oklahoma City symphony this season. Lola Jean Chaudoin is president of this district of the State Federation of Music Clubs which met here in November and Mildred Shaunnagsy is vice president. Ann Roberts sang on the program representing the Alumnae Club and another Mu Phi, Olive Abbot, sang representing the Norman Music Club. Mrs. Dwight Swain accompanied the active and alumnae chapter members. Founders' Day will be celebrated with a banquet at Oklahoma University. Ruby Payte has finished her course for Gray Ladies and is working on Music Therapy here in our state mental hospital. She feels that in the short time they have been working here, they can already detect an improvement in the group who came to their "classes." We will emphasize the drive for magazine subscriptions.—MINNIE M. HOWE, *Historian*.

TULSA ALUMNAE'S first business meeting was held October 19, 1952, at the home of Elizabeth Hamann Ruffin. Our President, Josephine Quinn Miller, delegate to the National Convention in Minneapolis last summer, gave an in-

teresting review of the highlights of the convention. One of our projects for raising money is a rummage sale to be held in November. The winners of the Helen Ringo Achievement Award were presented in a program Oct. 19 at the home of Lenore Biesterfeld McKirahan. They are Mona Glenna Stark, pianist, and Kenneth Fox, tenor, students at Tulsa University. The winners of the preceding years also performed. Elvina Truman, Mu Phi, and last year's winner, is now studying in New York City with Madame Isabelle Vengerova. Our special program plans include a unique Christmas program of advent chants, to be presented Dec. 2, by students of Monte Cassino School, directed by Sister Regina.—ELIZABETH HAMANN RUFFIN, *Historian*.

WICHITA ALUMNAE'S important news is our tremendous growth this year. We now have 43 girls affiliated with our alumnae chapter, as compared with 28 last year. In September, we had a wienner roast at the home of Thelma Ragle Coombs, at which time the following girls became affiliated with us: Marjorie Monts, Darlene Reese Brewer, Bonnie Molz Becker, Alma Nolan Sapp, Sally Clifton Starkey, Helene Sykes Barnes, Shirley Alpern Lebow, Julia Hoppes, Edla Rickard, Mary Major, Elna Clair Valine, and Mary Myrth Weatherwax. We met at the home of Carol Schowalter Holman the evening of Oct. 2 for a delightful evening of symphony previews, presented by Zoe Levenson. Zoe reviewed Dvorak's Symphony No. 4 in G Major, and "Metamorphosis on Themes of von Weber" by Hindemith. Both of these works were performed by the Wichita Symphony soon after our meeting. We are looking forward to our Founders' Day luncheon at which time Wanda Anderson Burkett, our National Third Vice President, will speak to us on "Founders' Day and What It Means." Musical numbers will be presented by Carol Schowalter Holman, flutist, who will be accompanied by Mary Frances Gresham, and Mary Myrth Weatherwax, soprano, who will be accompanied by Edla Rickard.—MARGUERITE SMITH MILLER, *Historian*.

DENVER ALUMNAE CHAPTER continued its study of contemporary mu-

sic the past year. Compositions of Hindemith, Bartok, Milhaud, Copland, Menotti, and folk songs set to music by Niles were given serious attention, along with others.

At the turn of the year, Dorothy Wasmus left us to become the wife of Dr. A. E. Ellsworth, head of the theory department at Southern Methodist University in Dallas.

Gladys Kendall journeyed to California in March to appear with her colleague, Dr. Antonio Brico, as duo-pianists on an NBC television broadcast, as well as in concert in Los Angeles, Carmel, and San Francisco.

Our annual Silver Tea-Musical was held April 20 at the lovely home of Katherine Perenyi. Participants included Joyce Orr, Beverly Simpson, and Jane McCluggage, alumnae, and Joan Howie, Greta Lea Ferris, and Alda Beeler, actives. The scholarship award was made to Marilyn Higginbottom this year.

As a part of the University of Denver's Shakespearian Festival this summer, Violette McCarthy, contralto, participated as Mistress Ford in "Falstaff" of the Shakespeare in Opera presentation.

At the summer round-up held at

Marian Baxter's resort grounds in Denver National Park, August 18, we were privileged to have our beloved Orah Ashley Lamke and Esta Pike, former Mu Rho, as our guests. Our picnic lunch and the miniature train afforded a delightful time.—JANE H. McCLUGGAGE, *Historian*.

MU THETA CHAPTER has six members who were recently initiated into Pi Lambda Kappa: June Stokes, who was also elected president for 1952-53, Joyce Gilstrap, treasurer, Shirley Van Cleave, Hettie Page Garwood, and Anita Carlton and Gladys Taylor. Lorene Michalopoulos and Joyce Gilstrap gave their senior recitals during the past summer. Joyce was also the winner in the Julia Hensinger McCall piano contest and received a \$200 award. Virginia Ratcliff, a graduate transfer student from Lindenwood College, St. Charles, Missouri, is a member of Who's Who in American Colleges and Universities. She received a graduate scholarship upon her graduation from Lindenwood. New pledges of Mu Theta Chapter are Betty Jo Taylor and Sue Sanborn. Sue received the Mu Phi Epsilon award at the University of Texas as the highest ranking freshman girl.—CLEMENTINE WHITE, *Historian*.

Pacific Province

PHI LAMBDA CHAPTER at Salem, Oregon, finished a busy year last May with the initiation of seven new members. They included Dorothea Church, Lake Grove, Oregon; Jeanette Denney, San Mateo, California; Elizabeth Gunn, Palo Alto, California; Evelyn Plog, Hood River, Oregon; Ann Shidell, Yakima, Washington; Lizabeth Shields, Castleford, Idaho; and Barbara Young, Lethbridge, Alberta, Canada.

Projects planned for the fall semester include a get-acquainted party for freshmen music majors, and the sponsoring of a benefit recital for Edna Marie Hill, pianist, and member of Phi Lambda Chapter who will begin studies at the Julliard School of Music in October.

Another student, Ann Gibbens, is going to Cincinnati Conservatory on a full scholarship.—Liz Shields, *Historian*.

EPSILON ETA CHAPTER carried on a busy year of activity on the campus of Pepperdine College with most of the members playing important parts in the cast and orchestra of Mozart's "Marriage of Figaro" and the spring production of "The Mikado."

The Opera Workshop this year was under the able direction of Esther Andreas of our chapter who is not only known for her fine capability as a voice coach but has a handsome following in her own right as an outstanding vocalist. Miss Andreas was busy this summer

presenting recitals in Laguna Beach and Los Angeles and was also heard on a 15-minute radio program sponsored by the Music Teacher's Association of Los Angeles. Mary Philips, our sponsor and also an accomplished pianist, accompanied Miss Andreas on her tour.

Early in the year we were honored by a visit from Eleanor Hale Wilson, National First Vice President, while she was on tour through the southland. Although southland floods may have dampened our spirits and plans, we were privileged to spend a very informative evening with her.

In an all-out effort to promote Mu Phi Epsilon on campus, we cooperated with Phi Mu Alpha in presenting weekly concerts in the college dining hall, selling punch and ushering at all musical functions and, in May, combined talents in a joint spring concert.

In May our annual spring banquet was held at Pierre's House of Crêpe Suzettes in San Marino. Mrs. Mary Hillecker, President of Los Angeles Alumnae Chapter, was the guest speaker. At that time, Lola Mathews, outgoing President, presented the gavel to Peggy Anne Bruce, our new President, and the new officers for the coming year were presented. Formal installation of officers was held in June at the home of Altanna Boylan.

In August a barbecue was given at the home of our sponsor, Mary Philips, and, at that time, Peggy Bruce treated us to an evening of "Convention Echoes." Peggy returned from the convention enthusiastic and filled with happy memories of those wonderful convention days. She informed us of all the business carried on at the convention and had arranged a lovely display of the many souvenirs and mementos of the convention, sharing every bit possible with the entire group. We are indeed looking forward to an eventful and inspiring year with Peggy at the helm.

New members received into the sorority this year were Darolyn Anderson, June Anderson, Janet Arbuckle, Donalee Glanville, Suzanne O'Neill, Alma Lou Shurte, and Carolyn Stevens.—ALMA LOUISE SHURTE, *Historian*.

PHI CHI CHAPTER members are busy ushering for various events. On

Oct. 20, they ushered for the opera "La Traviata," starring Lily Pons and Jan Peerce, and on Oct. 28, members ushered for the Fresno State College Symphony Orchestra Concert. On Nov. 7, an "Old-Fashion Party" was held by Mu Phi, combined with members of Phi Mu Alpha Sinfonia.—VIVIAN RYALS, *Historian*.

SACRAMENTO ALUMNAE held its first meeting with a pot-luck supper at the home of our president, Sue Campbell, who will be leaving us soon to live in San Mateo. We do regret seeing her leave since she worked so hard in organizing and carrying on the activities of our chapter. One of our recent innovations has been to give all newly-wedded girls and all new mothers miniature spoons with the Mu Phi insignia on them. One of our largest projects is beginning to take shape now. We are trying to set up a program of musical instruction for underprivileged children at the Lincoln Christian Center, which is located in an underprivileged section of town. Its purpose is to give these people a place and an opportunity to meet for recreation, Christian education, and extra-curricular activity. We are fortunate in having two of our girls, Mary Opal Crone and Eleanor Crone, on the staff at this Center. Some of our girls have volunteered to give some time to instruction in piano, violin, or other media. Working on the committee with the Crone sisters are Bertha Normington and Esther Allmendinger. More about this project at a later date. We are also planning to participate in the District Conference meeting in Stockton on Nov. 22, at the College of the Pacific. Sue Campbell will lead the round-table discussion on Fund Raising, Community Service, and Building and Maintaining Interest in the Chapter. Delores O'Neill and Mary Stout will present a violin and piano number for the afternoon musicale. A musical silver tea is being planned after January to help acquaint more people with Mu Phi Epsilon here in Sacramento.—BERTHA NORMINGTON, *Historian*.

MU ZETA is especially proud of its new Chapter Room which is now completed. It is a pleasure to gather together

in such pleasant surroundings and hard to believe that such a short time ago the room was only a sketchy inspiration toward our hopes and desires. In its completion the project fulfills the need for a room of our own and also one which can be shared with others as a listening room and a gathering place for music enthusiasts. Our Founders' Day was celebrated by a recital given in honor of the Freshmen and Faculty. The members participating on the program were: Meg Broughton, Valerie Chapman, and Nancy Owen, vocalists; Jane Allen, Nancy Bell, and Diane Dawson, pianists; Julia Graham and Carol Jean Babbitt, violists; Nancy Heggie, cellist; and Merridee Hobkirk, organist. After the recital a reception and open house was held in our new chapter room. The entire program was very successful and warmly received by the students, faculty and alumnae. We are now making plans for the participation of music in the hospitals during the Christmas Season. Caroling and a musical program for the hospitals in Walla Walla will no doubt bring cheer to many patients and Mu Zeta actives as well. Sunday afternoons are highlighted by a Mu Phi Epsilon recital given for the students as they gather before dinner. This project has become a tradition here and we hope to continue it for some time to come.—NANCY HEGGIE, *Historian*.

TACOMA ALUMNAE CHAPTER enjoyed Convention reports by President Virginia Washburn Morrison at a July luncheon. In August, rehearsals started for a cut version of Humperdinck's "Hansel and Gretel"—our money-making project. Our own Gertrude Graves Martin is directing the opera. Gertrude and Virginia are narrating, Katharine Peterson Gronen is Gretel, Esther Saager Jones, the Sandman. Hansel, Witch and the Angel Chorus are outside talent. Marie Miller Fortier, Dorothy Niles Rouse, Betty Mitchell Margelli are accompanists. Evalyn Pierpont Gill supplies violin music. Four performances have been scheduled. The annual Recognition Recital for senior high school girls will be Feb. 24 at Jason Lee Auditorium. Soloists were selected by the chapter from auditions.

Lois Chisholm Beckman, recital chairman, has charge of arrangements. A December tea will honor prospective initiates of a chapter we are sponsoring at Pacific Lutheran College. Founders' Day observance was an informal banquet at the "Top of the Ocean," with husbands, patronesses, and invited guests.—ESTHER SAAGER JONES, *Historian*.

MU BETA CHAPTER is enjoying another busy year. To add to the enjoyment of our meetings, we have a new room in the Van Doren Music Hall—complete with a fresh paint job and new curtains. We enjoyed a successful Frosh party this fall which was sponsored by Mu Phi Epsilon and Phi Mu Alpha. One of our money-making projects for this year is our ushering at all Vespers programs. We welcome four new pledges into our group: Mary Ellen Davidson, Lois Chalstrom, Eleanor Hall, and Jean LaLone. We know we will enjoy their talent and coöperation as the year unfolds. Our Founders' Day celebration this year will be a banquet held at our new student union building. We shall entertain the Cheney and Whitman college chapters, and Spokane and Pullman alumnae. Special speaker will be Mr. E. Schwartz from the University of Idaho, with entertainment provided by all the groups attending. A patroness party is planned for Dec. 6. We hope to entertain all 35 of our patronesses this year. Caroling with the Phi Mu Alphas and presenting a caroling program before Christmas vacation, will complete our activities preceding the holiday season.—BARBARA KITLAR, *Historian*.

SAN JOSE ALUMNAE CHAPTER has started a very busy season.

The first meeting was held in the home of Dorice Kelly, and our President, Edith Eagan, gave a wonderful description of the convention in Minneapolis—now we are all convention-minded for 1954.

The program of the year was outlined by Rosalie Speciale, Vice President and Program Chairman. Dorothy Fouch, our very efficient Treasurer, played a Handel Sonata for flute and was accompanied at the piano by Betty Jean Merritt, our Corresponding Secretary, who sends us our monthly newsletters.

Our money-making plan for the next meeting was really worth while—each member brought an article to be sold for one dollar. These articles included homemade cakes, hand-embroidered tea towels, walnuts, prunes, and apricots (three of our famous Santa Clara Valley products), and many other lovely and useful things. The sale took on the aspect of a bazaar and was a lot of fun. It was held at the home of Marjorie Sherman. At this meeting Frances Robinson gave a wonderful talk on European concerts which she attended during the summer. This is Frances' third trip to Europe and her travel talks are always so enjoyable. Frances manages European tours every summer and right now she is planning one to Mexico at Christmas time.

Our Founders' plans include a guest day and musical tea at the home of Rosalie Speciale on November 16. The program will consist of flute solos by Katharine Fuller Sorensen accompanied by Edith Eagan; soprano solos by Barbara Wells, accompanied by Violet Thomas; and sonata for cello and piano by Dorothy Lichty and Violet Thomas. Dorothy and Violet will also represent the San Jose Alumnae Chapter on the program at the District Conference in Stockton on November 22, when Mu Eta will act as hostess chapter to Phi Chi, Phi Mu, and Alumnae Chapters from Sacramento, Stockton, San Francisco, and San Jose.—EVABELLE LONG FULLER, *Historian*.

LOS ANGELES ALUMNAE CHAPTER will open its fall season with a luncheon at the home of our new President, Lucille Tackley. Vacation travel news of our members and a report of the convention by retiring president Marjorie Hilliker will occupy our few hours together.

This summer was the occasion of one general reunion for our group, when we picnicked at the beautiful new home of Edna Gunnar Peterson. Situated high on Pacific Palisades, the house commands a magnificent view of the Pacific. This was also the occasion for an "expecting" shower for Ramona Blair Mathewson.

Hollywood Bowl beckoned many of our sisters who remained in town, and

with many guests in native costume on "All Nations Night" we were proud to have our own Elsa Carrow as chairman of the evening.

At the meeting of the State Music Teachers in Riverside in August, Ardelia Schaub was again chosen President of the organization.

News of our \$1,000 scholarship loan fund winner, Eda Schlatter, has been received from Paris, where she is studying with F. Motte-Lacrois. She will play for the American Embassy this fall, and will give concerts in Paris, Copenhagen, and Stockholm. She has been invited to play in Nice and Cannes, and in England. Needless to say, we are proud of this alumnae chapter member. We are also happy to state that we have added \$500 to our fund by our last morning musicale.—LOUISE MILLER COOK, *Historian*.

STOCKTON ALUMNAE opened its fall season in September with a potluck supper at the home of president, Sue Norton Noland, honoring recent graduates from the College of the Pacific. Plans were made for a dessert card party to be held in October as a means of raising money for our scholarship fund. In the capable hands of Laverne Krull Caton and Betty Ashley Axup, it was a very successful party. Preparations are now being completed for our joint Founders' Day Celebration which will be held in Stockton November 22, with Sue Norton Noland as general chairman. Members from Fresno, San Jose, San Francisco and Sacramento chapters are expected. Principal speaker will be Eleanor Hale Wilson, National First Vice President. Following a 10:00 A.M. coffee hour will be a round table discussion, a luncheon at the Hutson House, and a program in which will be a participant from each chapter. A Christmas party is being planned for December. String music is the theme of our musical programs for this year.—IRVA RICKSON RAGETH, *Historian*.

BEVERLY HILLS ALUMNAE, under the capable direction of its new president, Helen Chute Dill, launched a lively fall season at the September meeting held at the home of our vice president, Harriet Payne. At this time an outstanding

convention report by Marie Erhart, our delegate and recording secretary, was given, with additional highlights by Esther Funk, past president, and Opal Hornback, treasurer. New members welcomed are Betty Donnegan, Janice Bryan Hawkinson, Evamaria Lanning, Virginia Mendenhall and Maxine Banton Strane. At our October meeting the Ways and Means Committee, chaired by Edna Glassbrook, presented plans for the year's projects to raise money for our philanthropic work. These will include some major musical activity, an illustrated travel talk by Helen Dill, "Beauty Spots from Scotland to Spain," Christmas card and fruit cake sales. Last year such projects netted the chapter \$220, with fruit cake sales alone bringing in \$90. Ruth Plough, pianist, and Harriet Payne, violist, accompanied by Carolyn Coe Gorka, furnished the evening's music. The annual Founders' Day Banquet was held at the new Statler Hotel in Los Angeles with the five local chapters and San Diego Alumnae celebrating the occasion together. The high point of our November meeting was a fascinating talk by Helen Dill on "Musical Europe Today." Helen traveled extensively in Europe this summer and attended music festivals in Edinburgh, Aix en Provence, Venice, Verona and Salzburg. Thyra Snyder, soprano, presented the musical program. We are continuing to present monthly programs at the Veteran's Hospital at Sawtelle. Lois Benedict, the devoted chairman of the Music in Hospitals Committee, is now serving as district chairman of the National Association for Music Therapy. For the use of our members we have two season tickets for the Los Angeles Philharmonic Orchestra series and also an associate membership in the Women's Lyric Club.—ELIZABETH BURR SEELY, *Historian*.

SPOKANE ALUMNAE CHAPTER began its year's activities in September, at the home of Frances Uhden. We held a successful rummage sale in October. Founders' Day celebration featured a quiz program on Gads Hill Center. Our husbands and escorts will be guests at a dinner and program in December. Thelma Langdon is the new President of the Spokane Music Teacher's Association; Betty Bell is a new instructor in

the music department of the public schools; Ruth Ayers, our president, is to install the new chapter at the University of Montana at Missoula this month. Our chapter is to be official hostess at the concert to be given by the music faculty at the State College of Washington's Art Center in Spokane. Evelyn Gutschmidt, pianist, will be our delegate at the district meeting to be held at Mu Beta chapter in Pullman, Washington.—IRMINGARD CROWDER, *Historian*.

PORTLAND ALUMNAE has not been slow about getting under way this year. The first meeting of the year was a Tea Musicale at the lovely home of Josephine Albert Spaulding. Founders' Day Banquet was attended by members of the Alumnae Chapter, and active chapters Epsilon Delta, Phi Lambda, and Epsilon Theta. It was held at the Benson Hotel and our National First Vice President, Eleanor Hale Wilson, was honor guest. The Chapter's Morning Musicales Series under Jane O'Reilly's continued management presents six of our Mu Phi artists members as well as our scholarship winner. And at our Christmas party we fancy-dressed as "Know Your Own Musical Characters." Personally speaking, Jean Harper was reelected Dean of Organists Guild, Portland Chapter, and Irene Belcher was elected President of Portland Council of PEO. Pearl Mitchell is presenting the music program at a PEO meeting next month and Dorothy French sang "Martha" in "Faust" with Portland Civic Opera this past summer.—Pearl Allison Peterson, *Historian*.

EUGENE ALUMNAE presented a study of music since 1900, "Pattern of the Present," as the first of a series of Morning Musicales. Held on the University of Oregon campus, October 16, the program was presented entirely by members and was attended by a capacity audience. The entire series consists of three morning lecture-recitals. "Pattern of the Dance," featuring the University's concert dance group under the direction of Miss Bettie Owen, will study principles and techniques of modern dance on Nov. 20. "Pattern of the Past," Jan. 15, will illustrate folk music of Oregon as collected by Mr. and Mrs. Russell Harrison (Mary Harrison, Eugene Alumnae

Chapter). Two dollar memberships were sold to the series, and all performers are donating their services so all proceeds can go towards music scholarships at the university. To date the chapter has cleared over \$300, and has awarded two \$100 scholarships and two \$60 scholarships. Scholarship winners will probably be presented in a bonus program in February. Lecturer for "Pattern of the Present" was Francis W. Bittner, assistant professor of music at the University of Oregon and husband of Constance Baxter Bittner, Eugene Alumnae Chapter's president. He made a fascinating and thoroughly comprehensible case for contemporary music, illustrated by the musical portions of the program. Coffee was served from a beautifully decorated table after the program.—BARBARA HEARTFIELD DIETERICH, *Chairman, Publicity Committee*.

SAN DIEGO ALUMNAE inaugurated our first season as a chapter when we met at the home of our president, Louise Ridgway Milner, for a business meeting, program and tea. Our vice president and program chairman, Eleanor

Hunt Godels, presented a program of delightful piano music given by Janet Richardson. Last May we were installed as a chapter by our own past National Officer, Caliste Conant Walker, at the home of Georgia Whitaker—a lovely setting for such an occasion. Mari Wagner Wise, harpist, and Margaret Wardall, violinist, gave us a beautiful program. In July, those of us who were in town enjoyed a picnic in Balboa Park. This was a just-for-fun meeting; good companionship and, of course, too much to eat. We shall celebrate Founders' Day on November 16. The Oneira Club will be opened to us through the courtesy of our Tilda Schmidt, violinist. In a few short years Tilda has made a nice niche for herself in teaching and musical circles here. Eight of her girls will play for us in string ensemble. Ruth Reynolds, soprano, who has been travelling and studying in Europe this past summer will sing for us. And Ruth Scott Christensen, soprano, who studied voice with our revered founder, Winthrop S. Sterling, will give a short history of Mu Phi Epsilon.—EDITH TREWARTHA DORSEY, *Historian*.

Reservation Blank

\$5.00 registration fee should be sent with this reservation. Make all checks payable to Lucy S. Miller, and mail to Mrs. Martin A. Miller, 12860 West Ten Mile Road, South Lyon, Mich.

I will attend the Sterling-Mathias Memorial Scholarship Lodge Dedication. Check type of accommodation preferred. Hotel service cafeteria style. Price includes meals (Sat. lunch through Mon. breakfast).

Hotel Rooms without private bath

- Single \$4.50-\$ 8.10 per day
 Double \$9.00-\$12.15 per day

Hotel Rooms with private bath

- Double only \$12.15-\$14.85 per day

Hotel Cottage Rooms with private bath

- Single \$ 7.65 per day
 Double \$11.70 per day

Deluxe Cabins

- Double \$14.85 per day

Scholarship Cottages

- Double only \$15.30-\$18.90 per day

I will not require reservations at the Camp.

Signed Chapter.....

Address

MU PHI EPSILON DIRECTORY

Founders

DR. WINTHROP S. STERLING, *Died November 16, 1943*

ELIZABETH MATHIAS FUQUA (MRS. JOHN W.), *Died May 17, 1950*

Honorary Advisory Board

- ELIZABETH MATHIAS FUQUA (MRS. JOHN W.) (Deceased).....*Alpha* 1904-05,07-08
 MYRTAL PALMER LEACH (MRS. FRANK), 2 Messervy St.,
 Salem, Mass.....*Gamma* 1905-07
 ELFRIDA LANGLOIS KENT (Deceased).....*Delta* 1908-11
 ALICE DAVIS BRADFORD PECK (MRS. ARTHUR), 40 Wilmuth Ave.,
 Wyoming, Ohio.....*Alpha* 1911-13
 ORA BETHUNE JOHNSON (MRS. J. F.) (Deceased).....*Theta* 1913-15
 MARY TOWSLEY PFAU (MRS. WILLIAM) (Deceased).....*Alpha* 1915-16
 ROXIELETTIE TAYLOR YEATES (MRS. JOHN), 1119 Rumsy Ave.,
 Cody, Wyoming.....*Theta* 1916-17
 HARRIET THOMPSON WRIGHT (MRS. WILLIAM E.), 482 Glen Ave.,
 Fresno, Calif.....*Chi* 1917-20
 DORIS BENSON (MRS. WALTER), Spikeswood Farm,
 Woodruff, Wisc.....*Iota Alpha* 1920-22
 PERSIS HEATON TRIMBLE (MRS. CHARLES M.) (Deceased).....*Mu Alpha* 1922-26
 LUCILLE EILERS BRETTSCHEIDER (MRS. AUGUST, JR.),
 3426 Morrison Place, Clifton, Cincinnati, Ohio.....*Alpha* 1926-28
 ORAH ASHLEY LAMKE (MRS. GEORGE W.), 1327 McCutcheon Road,
 Richmond Heights 17, Mo.....*Delta* 1928-30
 BERTHA M. (KING) VAN TILBURG (MRS. V.B.), R. 1, Box 194,
 Vista, Calif.....*Mu Epsilon* 1930-32, 34-40
 DOROTHY ELIZABETH PATON, Observatory Lodge, Apt. 304,
 1402 Washington Heights, Ann Arbor, Mich.....*Gamma* 1932-34
 ELIZABETH AYRES KIDD (MRS. A. EUGENE, JR.), New Trier High School,
 Winnetka, Ill.....*Mu Xi* 1940-42
 AVA COMIN CASE (MRS. LEE O.), School of Music,
 University of Michigan, Ann Arbor, Mich.....*Gamma* 1942-48
 MARGARETTE WIBLE WALKER, 2310 Scarff St., Los Angeles 7, Calif.....*Mu Nu* 1948-50
 ANCELLA M. FOX (MRS. O. S.) (Deceased).....*Iota Alpha*
 (Elected Honorary Life Member of Honorary Advisory Board
 at 1920 National Convention)

National Council—1952-54

- National President*—RUTH ROW CLUTCHER (MRS. JOHN), 21 Kent Road,
 Upper Darby, Penn.....*Omicron*
National First Vice President—ELEANOR E. HALE WILSON (MRS. P. RAYMOND),
 2800 39th Ave. West, Seattle 99, Wash.....*Tau*
National Second Vice President—ELVA B. McMULLEN GAMBLE
 (MRS. EUGENE E.), 9333 South Hamilton Ave., Chicago 20, Ill.....*Xi*

- National Third Vice President*—WANDA M. ANDERSON BURKETT
 (MRS. VICTOR N.), 6136 E. Harry St., Wichita, Kans.
National Fourth Vice President—GERTRUDE OTTO, 120 West 70th St.,
 New York 23, N. Y.
National Editor—RUTH HAVLIK, 1122 Adams St. N.E., Minneapolis 13, Minn.
National Executive Secretary-Treasurer—BERNICE S. OECHSLER (MRS. RALPH
 J.), 6604 Maplewood Ave., Sylvania, Ohio.
 NATIONAL EXECUTIVE OFFICE—6604 Maplewood Ave., Sylvania, Ohio.

National Departments

ALUMNAE BOARD

- Alumnae Adviser*—WANDA M. ANDERSON BURKETT (MRS. VICTOR N.),
 6136 E. Harry St., Wichita, Kans.
National Third Vice President
Atlantic Province—
 Mary L. Coltrane Hill (Mrs. Guy R.), 4329 Verplanck Place, Washington
 16, D. C.
 Mildred Clemons Bowker (Mrs. Everett M.), 143 Fairway Road, Chestnut
 Hill, Mass.
Great Lakes Province—
 Grace Louise Seiberling, 2006 Harrison St., Apt. 2, Evanston, Ill.
 Norma Schelling Emmert (Mrs. Geo. G.), 2906 Pembroke Road, Toledo 6, Ohio.
East Central Province—
 Helen V. Dickey Greco (Mrs. Wilson), 77 Eighteenth St., Newport, Kentucky.
 Ellen K. Goodin Graf (Mrs. Horace), 334 Tuxedo Blvd., Webster Groves 19, Mo.
North Central Province—
 Bernice M. Bonesteel, 4001 Old Marion Road, Cedar Rapids, Iowa.
 Alice Hussong Bieberstein (Mrs. Paul C.), 1549 South 23rd St., Lincoln, Nebr.
South Central Province—
 Ethel Wilkins Nicholas (Mrs. Kenneth), 2236 Forest, Denver, Colo.
 Josephine H. Quinn Miller (Mrs. Norman H.), 1729 So. Baltimore, Tulsa 5,
 Okla.
Pacific Province—
 Marjorie V. Schoeller Hilliker (Mrs. Larue), 2632 Kenwood Ave., Los Angeles
 7, Calif.
 Ruth V. Sampson Ayers (Mrs. Stephen E.), East 1003 20th, Spokane, Wash.

EDITORIAL BOARD

- Adviser*—RUTH HAVLIK, National Editor, 1122 Adams St. N.E.,
 Minneapolis 13, Minn.
Atlantic Province—
Active Representative—Helen C. Rothra, 424 University Ave., Rochester 7, N. Y.
Alumnae Representative—Elizabeth Storer Bothwell (Mrs. W. G.), 316 Beech
 St., Pittsburgh 21, Penn.
Great Lakes Province—
Active Representative—Collette V. Salon, 25120 West Roycourt, Huntington
 Woods, Mich.
Alumnae Representative—Viola Peterson, 3384 Berkeley Road, Cleveland
 Heights 18, Ohio.
East Central Province—
Active Representative—Peggy Pennel, Sibley Hall, Lindenwood College, St.
 Charles, Mo.
Alumnae Representative—Frances Collins Vanderbilt (Mrs. Donald B.), 1411
 East 77th St., Indianapolis 20, Ind.

North Central Province—

*Active Representative—*Laree McNeal, Fjelstad Hall, Concordia College, Moorhead, Minn.

South Central Province—

*Active Representative—*Katharine Jane Nelligan, 1630 Oxford Road, Lawrence, Kansas.

Pacific Province—

*Active Representative—*Ruth Freeman, 1717 E. 47th St., Seattle 5, Wash.

*Alumnae Representative—*Esther Beer Funk (Mrs. Roland), 251 So. McCarty Drive, Beverly Hills, Calif.

DISTRICT CONFERENCES

*Chairman—*SARAH A. VANCE KILGOUR (Mrs. RAYMOND L.), 513 Oswego Ave., Ann Arbor, Mich.

FINANCE

*Great Lakes Province—*DOROTHY E. PATON, *Chairman*, Apt. 304 Observatory Lodge, 1402 Washington Heights, Ann Arbor, Mich.

*Atlantic Province—*KATHARINE SHIRLEY, 21 Kent Road, Upper Darby, Penn.

*East Central Province—*EDNA S. VER HAAR DEACON (Mrs. STANLEY), 2208 West 56th St., Kansas City 2, Mo.

*North Central Province—*HELEN MELAAS CANINE (Mrs. WILLARD, JR.), 3818 Lincoln Place Dr., Des Moines, Iowa.

*Pacific Province—*CAROLYN M. A. REED TRAVIS (Mrs. JOHN A.), 9639 Bridgeport Way, S.W., Tacoma, Wash.

INTERNATIONAL MUSIC RELATIONS

*Chairman—*BERNICE AUSTIN HUESTIS (Mrs. R. A.), 3832 Kirkwood Road, Cleveland Heights, Ohio.

MAGAZINE SUBSCRIPTION AGENCY BOARD

*Chairman—*Helen McKie Ramage (Mrs. John), 15724 Turner St., Detroit 21, Mich.

*Atlantic Province—*Ruth Handbury, 4431 Spruce St., Philadelphia 4, Penn.

Great Lakes Province—

*Illinois Division—*Almira Lindgren Snyder (Mrs. K.), 2618 Lincolnwood Drive, Evanston, Ill.

*Ann Arbor Division—*Marguerite Bragg Fairchild (Mrs. Nathan O.), 1402 Hill St., Ann Arbor, Mich.

*Ohio Division—*Dorothy E. Oldham Dublo (Mrs. A. J.), 301 Herrick Ave. East, Wellington, Ohio.

East Central Province—

*Indiana Division—*Mary Moorman, 47 Bankers Lane, Apt. B, Indianapolis 1, Ind.

North Central Province—

Jean Akers, 3416 Blaisdell, Minneapolis, Minn.

*North Central Province and Northern Division of East Central Province—*Harriet G. Allen, 1855 Ashland, St. Paul 4, Minn.

*South Central Province—*Valerie Fescue (Mrs. A. W., Jr.), 3300 Milton, Dallas 5, Texas.

Pacific Province—

*Northern Division—*Lois V. Anderson Harper (Mrs. Glenn H.), 8418 South 134th St., Seattle 88, Wash.

*San Francisco Division—*Dorothy Knoles McAllister (Mrs. Erford A.), 771 Crystal Springs Road, San Mateo, Calif.

*Los Angeles Division—*Elizabeth Pond Bongard (Mrs. S. S.), 2968 West 14th St., Los Angeles, Calif.

MU PHI EPSILON SCHOOL OF MUSIC AT GADS HILL CENTER

1919 West Cullerton, Chicago, Ill.

*Director—*Winnifred R. Erickson, 1951 West Schiller St., Chicago 22, Ill.

*Treasurer—*Alma E. Grambauer, 1380 Henry St., Des Plaines, Ill.

*Representative on Settlement Board—*Carolyn H. Stubbs Wooden (Mrs. John C.), 700 Hinman Ave., Evanston, Ill.

*Publicity Chairman—*Ruth E. Earhart Werchman (Mrs. John), 725 So. Ashland Blvd., Chicago 7, Ill.

MUSIC IN HOSPITALS

*Chairman—*Viola Moen Anderson (Mrs. Henry O.), 1038 1st St. North, Fargo, N. D.

1954 CONVENTION

*Chairman—*Luna Chipman Wootten (Mrs. J. Tracey), 1650 Kengsington Ave., Salt Lake City, Utah.

PUBLIC RELATIONS BOARD

*Adviser—*GERTRUDE OTTO, National Fourth Vice President, 120 West 70th St., New York 23, N. Y.

Joanne Johnson Baker (Mrs. Russell W.), 417 W. 59th Terrace, Kansas City 2, Mo.

Eleanor Mehl Berger (Mrs. Arnold), 2 Drury Lane, Port Washington, L. I., N. Y.

Virginia J. Washburn Morrison (Mrs. Edwin A.), 1816 N. Union Ave., Tacoma 7, Wash.

Phyllis Ann Murphy, 801 South Wright, Champaign, Ill.

Kay Swinney Newman (Mrs. Hal C.), 4805 South Lindhurst, Dallas, Texas.

Marilyn Jean Norman (Mrs. Carl W.), 1918 Arthur St. N.E., Minneapolis, Minn.

RITUAL

*Chairman—*Adele Reeves Ratcliffe (Mrs. Kent E.), 3700 Cascadia, Seattle 44, Wash.

SCHOLARSHIPS

*Chairman—*Helen Chute Dill, 339 Reeves Drive, Beverly Hills, Calif.

STERLING-MATHIAS MEMORIAL

*Chairman, Sterling-Mathias Memorial Fund—*Hildur Lavine Shaw (Mrs. Wm. S.), 1319 9th St. So., Fargo, N. D.

*Chairman, Sterling-Mathias Memorial—*Ava Comin Case (Mrs. Lee O.), School of Music, Univ. of Michigan, Ann Arbor, Mich.

*Chairman, 1953 Birthday Observances—*Laura B. McNutt Neeley (Mrs. Umberto T.), 1511 Groesbeck Road, Cincinnati 24, Ohio.

*Chairman, Lodge Dedication—*Lucy K. Selden Miller (Mrs. Martin A.), 12860 West Ten Mile Road, South Lyon, Mich.

Active and Alumnae Chapters

ATLANTIC PROVINCE

*Province Governor—*GERTRUDE OTTO, National Fourth Vice President, 120 West 70th St., New York 23, N. Y.

*Beta—*New England Conservatory of Music.....Boston, Mass.
*President—*CAROL POST WALKER, 44 Chambers St., Boston, Mass.

*Mu—*Brenau College.....Gainesville, Ga.
*President—*BARBARA LOU HUIE, Delta Delta Delta House, Gainesville, Ga.

*Psi—*Bucknell University.....Lewisburg, Penn.
*President—*MIRIAM ESSLINGER, W 336, Bucknell Univ., Lewisburg, Penn.

*Mu Upsilon—*Eastman School of Music at Univ. of Rochester.....Rochester, N. Y.
*President—*DONNA MACLEAN, 424 University Ave., Rochester 7, N. Y.

*Phi Gamma—*Peabody Conservatory of Music.....Baltimore, Md.
*President—*VIRGINIA M. DIETRICH (Mrs. CARL), 5301 Brabant, Baltimore 29, Md.

*Phi Upsilon—*Boston University.....Boston, Mass.
*President—*EVELYN CASTOLDI, 55 Auburndale Ave., West Newton 65, Mass.

*Phi Psi—*Mary Washington College of the Univ. of Virginia.....Fredericksburg, Va.
*President—*VIRGINIA POOLE, Box 1474, Custis 202, M.W.C., Fredericksburg, Va.

*Phi Omega—*Westminster College.....New Wilmington, Penn.
*President—*CAROLYN LUELLA EDDY, Alpha Gamma Delta House, New Wilmington, Penn.

*Epsilon Nu—*West Virginia University.....Morgantown, W. Va.
*President—*DORIS JEAN CRAWFORD, 132 Racine Ave., Morgantown, W. Va.

Boston Alumnae Chapter—
*President—*UNA ALLEN, 53 Hancock St., Boston, Mass.

- Miami Alumnae Chapter*—
President—LOUISE STERLING BURKHART (MRS. LYNN C.), 3839 Irvington Ave., Miami 33, Fla.
- New York Alumnae Chapter*—
President—DR. MERLE MONTGOMERY, New Weston Hotel, 50th and Madison, New York 22.
- Philadelphia Alumnae Chapter*—
President—RUTH HANDBURY, 4431 Spruce St., Philadelphia 4, Penn.
- Pittsburgh Alumnae Chapter*—
President—MYRA BANCROFT OLIVE, 2510 Sylvania Drive, Pittsburgh 34, Penn.
- Rochester Alumnae Chapter*—
President—FRANCES DEWITT BABCOCK (MRS. GEORGE), 3 Inwood Dr., Rochester 10, N. Y.
- Washington Alumnae Chapter*—
President—MARY L. COLTRANE HILL (MRS. GUY R.), 4329 Verplanck Place N.W., Washington 16, D. C.
- Connecticut Valley Alumnae Club*—
President—ALICE CAROLINE HANSEN, 262 Preston St., Hartford, Conn.

GREAT LAKES PROVINCE

- Province Governor*—ELVA B. McMULLEN GAMBLE (MRS. EUGENE E.), National Second Vice President, 9333 South Hamilton Ave., Chicago 20, Ill.
- Gamma*—University of Michigan.....Ann Arbor, Mich.
President—BETTY WHITNEY ELLIS, 1520 South University, Ann Arbor, Mich.
- Iota Alpha*—Chicago Musical College.....Chicago, Ill.
President—ELAINE VIRGINIA CRAY, 1300 No. Dearborn St., Chicago 10, Ill.
- Sigma*—Northwestern University.....Evanston, Ill.
President—NANCY MAY SORENSEN, 819 Michigan Ave., Evanston, Ill.
- Phi*—Mount Union College.....Alliance, Ohio
President—LORETTA MAE DUNKERTON, 2471 Clark Ave., Alliance, Ohio
- Mu Xi*—American Conservatory of Music.....Chicago, Ill.
President—PAULINE MARGARET KASCHINS, 10920 S. Ridgeland Ave., Worth, Ill.
- Mu Phi*—Baldwin-Wallace College.....Berea, Ohio
President—MAXINE MAY FISHER, Merner-Pfeiffer Hall, Berea, Ohio
- Phi Kappa*—Wayne University.....Detroit, Mich.
President—COLLETTE VIVIA SALON, 25120 West Roycourt, Huntington Woods, Mich.
- Phi Omicron*—Western Reserve University.....Cleveland, Ohio
President—CLARE ELLEN DAVIS, 11129 Euclid Ave., Cleveland 6, Ohio.
- Phi Sigma*—De Paul University.....Chicago, Ill.
President—DELORES MACZKO, 2658 N. Mulligan Ave., Chicago 39, Ill.
- Epsilon Lambda*—Michigan State Normal College.....Ypsilanti, Mich.
President—GRETCHEN ELIZABETH PEARSON, Jones Hall, M.S.N.C., Ypsilanti, Mich.
- Epsilon Xi*—University of Illinois.....Urbana, Ill.
President—PHYLLIS ANN MURPHY, 801 South Wright, Champaign, Ill.
- Ann Arbor Alumnae Chapter*—
President—EDITH STAEBLER KEMPF (MRS. PAUL R.), 809 Oxford Road, Ann Arbor, Mich.
- Chicago Alumnae Chapter*—
President—HELEN E. PURCELL MAXWELL (MRS. H. PHILIP), 5510 Sheridan Road, Chicago 40.
- Cleveland Alumnae Chapter*—
President—VIOLA PETERSON, 3384 Berkeley Road, Cleveland Heights 18, Ohio
- Detroit Alumnae Chapter*—
President—DOROTHY O. SCHROEDER DORJATH (MRS. JOSEPH), 18197 Cornell Road, Detroit 19, Mich.
- Evanston-North Shore Alumnae Chapter*—
President—MARJORIE GALLAGHER KENNY (MRS. RICHARD E.), 5638 N. Richmond Ave., North Town, Chicago 45, Ill.
- Maumee Valley Alumnae Chapter*—
President—EILEEN DENNIS STACY (MRS. VAUGHN E.), 2670 Meadowwood Drive, Toledo 6, Ohio
- Toledo Alumnae Chapter*—
President—NORMA SCHELLING EMMERT (MRS. GEORGE G.), 2906 Pembroke Road, Toledo 6, Ohio
- Urbana-Champaign Alumnae Club*—
President—ALFRIEDA ALDRICH SLAYMAN (MRS. HUGUS W.), 905 W. Illinois, Urbana, Ill.

EAST CENTRAL PROVINCE

- Province Governor*—RUTH ROW CLUTCHER (MRS. JOHN), National President, 21 Kent Road, Upper Darby, Penn.
- Zeta*—De Pauw University.....Greencastle, Ind.
President—MARGARET ALICE MUTSCHLER, Alpha Chi Omega House, Greencastle, Ind.

- Theta*—Kroeger School of Music.....St. Louis, Mo.
President—BONNIE JEAN TROWBRIDGE (MRS. LOUIS E., JR.), 543 Warren, University City 5, Mo.
- Kappa*—Jordan College of Music of Butler University.....Indianapolis, Ind.
President—DELORES SPALDING, 1346 N. Delaware St., Indianapolis, Ind.
- Upsilon*—Conservatory of Music.....Cincinnati, Ohio
President—CARYL G. JOSCELYN, Conservatory of Music, Cincinnati 19, Ohio
- Mu Delta*—Conservatory of Music of Kansas City.....Kansas City, Mo.
President—ERMA HURLIMAN, 175th and Holmes, Grandview, Mo.
- Mu Omicron*—College of Music.....Cincinnati, Ohio
President—ROBERTA ANN SEXTON, 1228 Elm St., Cincinnati 10, Ohio
- Mu Pi*—Ohio Wesleyan University.....Delaware, Ohio
President—JOAN MACK, Mohrnett Hall, Delaware, Ohio
- Phi Theta*—Lindenwood College.....St. Charles, Mo.
President—PEGGY PENNEL, Sibley Hall, Lindenwood College, St. Charles, Mo.
- Phi Phi*—University of Kansas City.....Kansas City, Mo.
President—RUTH LORRAINE SEEK, Grandview, Mo.
- Epsilon Kappa*—Southern Illinois University.....Carbondale, Ill.
President—CAROL HENDERSON, Anthony Hall, Carbondale, Ill.
- Epsilon Omicron*—Indiana University.....Bloomington, Ind.
President—BARBARA JOAN HOADLEY, Box 23, Bloomington, Ind.
- Cincinnati Alumnae Chapter*—
President—HELEN V. DICKEY GRECO (MRS. WILSON), 77 Eighteenth St., Newport, Ky.
- Columbus Alumnae Chapter*—
President—VIRGINIA F. FOSTER PAYNE (MRS. LEIGH W.), 276 W. Southington, Worthington, Ohio
- Evansville Alumnae Chapter*—
President—KATHLEEN L. MAIN SWEENEY (MRS. WILLIAM A.), 2320 East Virginia St., Evansville, Ind.
- Indianapolis Alumnae Chapter*—
President—MADGE CATHART GERKE (MRS. FRANK E.), 3819 N. Dearborn, Indianapolis 5, Ind.
- Kansas City Alumnae Chapter*—
President—MAXINE KORFHAGE FRYE (MRS. RAYMOND V.), 4654 Penn, Kansas City 2, Mo.
- St. Louis Alumnae Chapter*—
President—ELLEN GOODIN GRAF (MRS. HORACE), 334 Tuxedo Blvd., Webster Groves 19, Mo.
- Columbia Alumnae Club*—
President—IRMA C. THOLEN WHEELOCK (MRS. WEBSTER), 31 Maplewood Drive, Columbia, Mo.

NORTH CENTRAL PROVINCE

- Province Governor*—RUTH HAVLIK, National Editor, 1122 Adams St. N.E., Minneapolis 13, Minn.
- Omega*—Drake University.....Des Moines, Iowa
President—PATRICIA NOEL, 3118 Cottage Grove Ave., Des Moines, Iowa
- Mu Alpha*—Simpson College.....Indianola, Iowa
President—ARLENE MAE HOLMES, Mary Betty Hall, Indianola, Iowa
- Mu Gamma*—University of Nebraska.....Lincoln, Nebr.
President—KATHLEEN WILSON, 405 University Terrace, Lincoln, Nebr.
- Mu Epsilon*—MacPhail School of Music.....Minneapolis, Minn.
President—MARILYN JEAN NORMAN (MRS. CARL W.), 1918 Arthur St. N.E., Minneapolis, Minn.
- Mu Tau*—University of South Dakota.....Vermillion, So. Dak.
President—ORPHA FAHRENWALD, Dakota Hall, Vermillion, S. D.
- Mu Psi*—Coe College.....Cedar Rapids, Iowa
President—CAROLE J. HAMILTON MURFIELD (MRS. NORMAN J.), 15 Marquis Court N. E., Cedar Rapids, Iowa
- Phi Zeta*—Morningside College.....Sioux City, Iowa
President—MARY ANNE RASMUSSEN, 3318 Vine Ave., Sioux City 20, Iowa
- Phi Iota*—Concordia College.....Moorhead, Minn.
President—OPAL MATHSEN, Fjelstad Hall, Moorhead, Minn.
- Phi Rho*—Minneapolis College of Music.....Minneapolis, Minn.
President—ESTHER J. O'TOOLE, 1503 Portland Ave. So., Minneapolis, Minn.
- Epsilon Alpha*—The College of St. Catherine.....St. Paul, Minn.
President—BONNIE HAMMOND, The College of St. Catherine, St. Paul, Minn.
- Cedar Rapids Alumnae Chapter*—
President—BERNICE MAY BONESTEEL, 4001 Old Marion Road, Cedar Rapids, Iowa
- Des Moines Alumnae Chapter*—
President—KATHARINE IVES MOON (MRS. M. P.), 1532 42d St., Des Moines, Iowa
- Lincoln Alumnae Chapter*—
President—ALICE E. HUSSONG BIEBERSTEIN (MRS. PAUL C.), 1549 S. 23d St., Lincoln, Nebr.
- Minneapolis Alumnae Chapter*—
President—CLEO MUNDEN HINER (MRS. JAMES), 1128 La Salle Ave., Minneapolis 3, Minn.

SOUTH CENTRAL PROVINCE

- Province Governor*—WANDA M. HENDERSON BURKETT (MRS. VICTOR N.),
National Third Vice President, 6136 E. Harry St., Wichita, Kans.
- Xi*—University of Kansas.....Lawrence, Kans.
President—KATHARINE JANE NELLIGAN, 1630 Oxford Road, Lawrence, Kans.
- Mu Theta*—University of Texas.....Austin, Texas
President—JUNE STOKES, 703-C West 23d, Austin, Texas
- Mu Kappa*—University of Oklahoma.....Norman, Okla.
President—MARGARET L. PARROTT SOREY (MRS. STEWART), 524 S. University Blvd., Norman, Okla.
- Mu Mu*—Kansas State College.....Manhattan, Kans.
President—YVONNA JEAN WHITELEY, 324 N. 15th, Manhattan, Kans.
- Mu Rho*—Lamont School of Music at the University of Denver.....Denver, Colo.
President—LOUANN JURGENS, 3874 Osceola, Denver, Colo.
- Mu Chi*—Southern Methodist University.....Dallas, Texas
President—CAROLYN WRIGHT, 3231 Greenbrier, Dallas, Texas
- Phi Epsilon*—College of Emporia.....Emporia, Kans.
President—RUTH KATHLEEN KERAUS, Dunlap Hall, Emporia, Kans.
- Phi Xi*—Baylor University.....Waco, Texas
President—PATSY FLORA McCALL, Memorial Dormitory, Waco, Texas
- Phi Pi*—University of Wichita.....Wichita, Kans.
President—ROUMAL MORFORD, 3616 E. 21st, Wichita, Kans.
- Phi Tau*—North Texas State College.....Denton, Texas
President—GRACE ADELE GRAINGER, Box 7336 N.T. Sta., Denton, Texas
- Epsilon Gamma*—Belhaven College.....Jackson, Miss...
President—GERALDINE CADE, Belhaven College, Jackson, Miss.
- Epsilon Epsilon*—Texas Christian University.....Fort Worth, Texas
President—MARGARET JEAN LINDSEY, Box 103, T.C.U., Fort Worth, Texas
- Epsilon Zeta*—Hendrix College.....Conway, Ark.
President—TOMME BARTON WILSON, Galloway Hall, Hendrix College, Conway, Ark.
- Epsilon Mu*—University of Utah.....Salt Lake City, Utah
President—NORENE ROGERS, 222 South 13th East, Salt Lake City, Utah
- Epsilon Pi*—Texas Technological College.....Lubbock, Texas
President—JOYCE RUTH CARTHEL, Box 86, Dorm. III, Lubbock, Texas
- Dallas Alumnae Chapter*—
President—GLORIA E. TURQUETTE BRYDON (MRS. RUSSELL J., JR.), 4312 Junius, Apt. 2, Dallas, Texas
- Denver Alumnae Chapter*—
President—ETHEL WILKINS NICHOLAS (MRS. KENNETH), 2236 Forest, Denver 7, Colo.
- Fort Worth Alumnae Chapter*—
President—MINERVA CUNNINGHAM BLACKMAN (MRS. CLINT C.), 3712 Somerset Lane, Fort Worth, Texas
- Oklahoma City Alumnae Chapter*—
President—RUBY N. THOMAS PAYTE (MRS. JAMES IRA), 2717 N.W. 20th, Oklahoma City 6, Okla.
- Salt Lake City Alumnae Chapter*—
President—LUNA CHIPMAN WOOTTON (MRS. J. TRACEY), 1650 Kensington Ave., Salt Lake City 5, Utah
- Tulsa Alumnae Chapter*—
President—JOSEPHINE H. QUINN MILLER (MRS. NORMAN H.), 1729 S. Baltimore, Tulsa 5, Okla.
- Wichita Alumnae Chapter*—
President—MARY A. EBY BICKFORD (MRS. CHRISTY R.), 950 N. Battin, Wichita, Kans.

PACIFIC PROVINCE

- Province Governor*—ELEANOR E. HALE WILSON (MRS. P. RAYMOND), National
First Vice President, 2800 39th Ave. West, Seattle 99, Wash.
- Nu*—University of Oregon.....Eugene, Ore.
President—BEVERLE J. GOHEENM, 2060 Agate St., Eugene, Ore.
- Tau*—University of Washington.....Seattle, Wash.
President—RUTH ALICE FREEMAN, 1717 E. 47th, Seattle 5, Wash.
- Mu Beta*—Washington State College.....Pullman, Wash.
President—NANCY VALAINE SCOLES, Kappa Delta, Pullman, Wash.
- Mu Zeta*—Whitman College.....Walla Walla, Wash.
President—JANICE STILLER, Box 716, Whitman College, Walla Walla, Wash.
- Mu Eta*—College of the Pacific.....Stockton, Calif.
President—HELEN MARIE FLAHERTY, South Hall, C.O.P., Stockton, Calif.

- Mu Nu*—University of Southern California.....Los Angeles, Calif.
President—NANCY ANN WELCH, 814 W. 28th St., Los Angeles 7, Calif.
- Phi Lambda*—Willamette University.....Salem, Ore.
President—HARRIET ANN ALLER, 1610 Court St., Salem, Ore.
- Phi Mu*—San Jose State College.....San Jose, Calif.
President—LORRAINE ALICE WOOD, 321 Rincon Ave., Campbell, Calif.
- Phi Nu*—University of California at Los Angeles.....Los Angeles, Calif.
President—JOAN VODICA ROSBACH, 392 Norcroft Ave., Los Angeles 24, Calif.
- Phi Chi*—Fresno State College.....Fresno, Calif.
President—LORNA JEAN MITCHELL, 1104 W. Clinton, Fresno, Calif.
- Epsilon Delta*—Lewis and Clark College.....Portland, Ore.
President—NANNETTE McANDIE, 3345 N.E. 79th, Portland 13, Ore.
- Epsilon Eta*—George Pepperdine College.....Los Angeles, Calif.
President—PEGGY BRUCE, 1121 W. 79th St., Los Angeles 44, Calif.
- Epsilon Theta*—Linfield College.....McMinnville, Ore.
President—DENIECE RAE HUNTINGTON, Box 313, Linfield College, McMinnville, Ore.
- Epsilon Iota*—Eastern Washington College of Education.....Cheney, Wash.
President—MARGARET STERNITZKY (MRS. A. H.), Box 402, Cheney, Wash.
- Epsilon Rho*—Montana State College.....Missoula, Montana
President—STELLA ADALINE CRITELLI, New Hall, M.S.U., Missoula, Montana
- Beverly Hills Alumnae Chapter*—
President—HELEN CHUTE DILL, 339 Reeves Drive, Beverly Hills, Calif.
- Eugene Alumnae Chapter*—
President—CONSTANCE BAXTER BITTNER (MRS. FRANCIS W.), 2760 Elinor St., Eugene, Ore.
- Los Angeles Alumnae Chapter*—
President—LUCILLE CROFT TACKLEY (MRS. MERRILL), 2250 Guthrie Drive, Los Angeles 35, Calif.
- Portland Alumnae Chapter*—
President—BELVA-JUNE MAYOR, 2945 S.E. Carlton St., Portland 2, Ore.
- Sacramento Alumnae Chapter*—
President—CATHERINE E. HEWITT HUGHES (MRS. C. P.), 2901 22d St., Sacramento, Calif.
- San Diego Alumnae Chapter*—
President—LOUISE RIDGWAY MILNER (MRS. CARL), 7903 El Capitan Drive, La Mesa, Calif.
- San Francisco Alumnae Chapter*—
President—HELENA B. MUNN REDEWILL (MRS. FRANCIS H.), 1675 Euclid Ave., Berkeley, Calif.
- San Jose Alumnae Chapter*—
President—EDITH MILLER EAGAN (MRS. THOMAS E.), 55 S. 12th St., San Jose, Calif.
- Seattle Alumnae Chapter*—
President—WINIFRED JEAN LEIGHTON, 4114 Densmore Ave., Seattle 3, Wash.
- Spokane Alumnae Chapter*—
President—RUTH V. SAMPSON AYERS (MRS. STEPHEN E.), E. 1003 20th, Spokane, Wash.
- Stockton Alumnae Chapter*—
President—SUE NORTON NOLAND (MRS. BYRON R.), 1754 Bristol Ave., Stockton, Calif.
- Tacoma Alumnae Chapter*—
President—VIRGINIA J. WASHBURN MORRISON (MRS. EDWIN A.), 1816 N. Union Ave., Tacoma, Wash.
- Honolulu Alumnae Club*—
President—LAMORA SOUVINET GARY, 332-A Royal Hawaiian Ave., Honolulu, T. H.

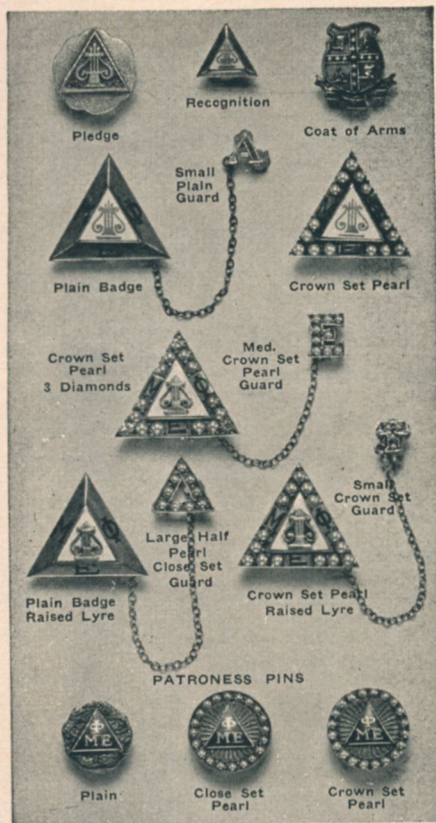
Have You Moved or Married?

YOUR prompt change of address will assure
prompt delivery of all Mu Phi mail.

Write: BERNICE SWISHER OECHSLER (MRS. RALPH J.), National
Executive Secretary-Treasurer, 6604 Maplewood Ave., Sylvania,
Ohio.

FORTY YEARS OF BALFOUR CRAFTSMANSHIP

Dedicated to Fraternity Service



As we celebrate our 40th anniversary year, the L. G. Balfour Company is proud to look back on its record of service to the fraternities and sororities. Founded on December 13, 1913, the L. G. Balfour Company was dedicated to serve the fraternities in the manufacture of their insignia, made for the first time in exact accordance with official contract specifications.

Such insignia is made from dies to give uniform gold content and exact design assuring the fact that each pin or key is identical.

Having surmounted the difficulties of two world wars providing vital defense work while serving the fraternities all the while, the L. G. Balfour Company on this 40th anniversary pauses to rededicate itself to the service and satisfaction of the fraternity men and women.

You may be proud to wear your pin or key, fastened by the skilled and experienced hands of Balfour craftsmen.

Mail Coupon for Your
FREE COPY
**1953 BALFOUR
BLUE BOOK**
40th Anniversary Edition

Write for complete price list
of your insignia

FAVORS to make your parties unusual and different.

MING CHINA, Wedding Gifts, Baby Gifts, Zoo Parade, Chapter house door plates and other gifts.

CRESTED RINGS to identify you for a lifetime.

PERSONAL JEWELRY for accessories and gifts.

Mail Coupon below—or write letter—for YOUR FREE COPY
(Please mention fraternity)

L. G. BALFOUR COMPANY
Factories at Attleboro, Massachusetts
IN CANADA . . . Contact your nearest BIRKS' STORE

L. G. Balfour Co. date
Attleboro, Mass.

Please send
 1953 BLUE BOOK Diamond Ring Booklet
 Ceramic Flyers Military Insignia Flyer

Name

Address

MΦE

**ONLY BALFOUR Gives
You This Complete
Service**

100 REPRESENTATIVES throughout the country to make **PERSONAL** chapter displays.

50 STORES from coast to coast to serve you.

...The Alumnae Chapters

1952-53 CALENDAR

SEPTEMBER—President calls meeting of chapter officers to make plans for the year.

Corresponding Secretary reports any changes in names and addresses of chapter officers to NEO (National Executive Office, 6604 Maplewood Ave., Sylvania, Ohio) and orders supplies for the year (from NEO) enclosing check and remittance blank secured from Treasurer.

SEPTEMBER 10—Historian: All material for inclusion in November TRIANGLE must be in the Office of the National Editor, Ruth Havlik, 1122 Adams St., N.E., Minneapolis 13, Minn.

OCTOBER 15—Treasurer and Corresponding Secretary prepare and send to NEO, fall membership lists (on official forms) and check with remittance blank to cover fall per capita taxes (\$1.25 per member), and Convention taxes (\$1.25 per member—for Alumnae chapters only), and TRIANGLE subscriptions for annual subscribers (\$1.00 per year).

NOVEMBER 13—Founders' Day. Forty-Ninth Anniversary.

NOVEMBER 13—Treasurer sends to NEO, check with remittance blank for Founders' Day Fund voluntary contribution of 49 pennies per member.

NOVEMBER 15—Historian's required fall newsletter due at Office of National Editor; deadline for material for January TRIANGLE.

DECEMBER 1—President writes fall report-letter to National Third Vice President, Wanda M. Anderson Burkett (Mrs. Victor N.), 6136 East Harry St., Wichita, Kans.

JANUARY 10—Historian: Deadline for material for March TRIANGLE.

FEBRUARY 1—Contestants, Musicological Research Contest: send notice of your intention to enter contest to Ardeen Burkett Casado (Mrs. Tony), 215 So. Glendale, Wichita, Kans.

MARCH 1—Closing date for entries in Mu Phi Epsilon Song Contest for 1953.

MARCH 10—Historian: Deadline for required spring newsletter and material for May TRIANGLE.

MARCH 15—Treasurer and Corresponding Secretary prepare and send to NEO, spring membership lists (on official forms) and check with remittance blank to cover spring per capita taxes (\$.75 per member), and Convention taxes (\$1.25 per member—for Alumnae Chapters only).

MARCH 15—Manuscripts for Musicological Research Contest due at Office of Ardeen Burkett Casado (Mrs. Tony), 215 So. Glendale, Wichita, Kans.

MARCH 15—President writes spring report-letter to National Third Vice President, sending copy to your own Province Governor.

JUNE 1—President, Treasurer and Corresponding Secretary send annual reports to NEO (on official forms).

JUNE 1—Manuscripts for Original Composition Contest due at office of National Second Vice President Elva B. McMullen Gamble (Mrs. Eugene E.), 9333 So. Hamilton Ave., Chicago 20, Ill.



he

*Mu Phi Epsilon
Creed*

I believe in Music, the noblest of all the arts, a source of much that is good, just, and beautiful; in Friendship, marked by love, kindness, and sincerity; and in Harmony, the essence of a true and happy life. I believe in the sacred bond of Sisterhood, loyal, generous, and self-sacrificing, and its strength shall ever guide me in the path that leads upward toward the stars.

—RUTH JANE KIRBY, *Omega*