

*The*

# *Triangle*

*of Mu Phi Epsilon*

*May, 1954*

*Golden Anniversary Year*

Active  
Chapters

# 1953-54 CALENDAR

**FIRST WEEK OF SCHOOL:** President: Call meeting of chapter officers to inspect chapter equipment, discuss fall materials received from NEO, and make plans for the year. Corresponding Secretary: Report any changes in name and address of chapter officers to NEO and order supplies for the year from NEO, enclosing check and remittance sheet received from Chapter Treasurer.

**SEPTEMBER 10**—Historian: All material for inclusion in November TRIANGLE must be in the office of the National Editor.

**NOVEMBER 13**—Founders' Day. Golden Anniversary.  
Treasurer: Send to NEO, with remittance sheet, check for Founders' Day Fund—your voluntary contribution of 50 pennies per member.

**NOVEMBER 15**—Treasurer and Corresponding Secretary: Prepare and send to NEO fall membership lists on official forms and check with remittance sheet to cover fall per capita taxes (\$1.50 per member), Convention taxes (\$1.25 per member), and TRIANGLE subscriptions for annual subscribers (\$1.00 per year).  
Deadline for material for January TRIANGLE.

**DECEMBER 15**—President: Write fall report-letter to your Province Governor concerning chapter activities and problems.

**JANUARY 10**—Historian: Required news-letter due at Office of National Editor. Deadline for all material for March TRIANGLE.

**MARCH 1**—Closing date for entries in MU PHI EPSILON Song Contest for 1954.

**MARCH 10**—Historian: Deadline for material for May TRIANGLE, Convention glossy, and biographical sketch.

**LAST WEEK OF FIRST SEMESTER** or not later than February 28—President: Appoint Nominating Committee for new chapter officers.

**FIRST MONTH OF SECOND SEMESTER**—President: Call meeting of chapter for election of new officers, who will be installed in office during second month of second semester.  
Corresponding Secretary: Report names and addresses of new chapter officers to NEO, using official forms.

**APRIL 15**—Treasurer and Corresponding Secretary: Prepare and send to NEO spring membership list on official forms, check with remittance sheet to cover spring per capita taxes (\$1.50 per member), Convention taxes (\$1.25 per member), and annual subscribers to the TRIANGLE (\$1.00 per year) not reported on November 15 list.

**APRIL 15**—President: Write spring report-letter to your Province Governor.

**JUNE 1**—President, Treasurer, and Corresponding Secretary: Send annual reports to NEO on official forms.

# The Triangle of Mu Phi Epsilon

May • 1954

## Contents

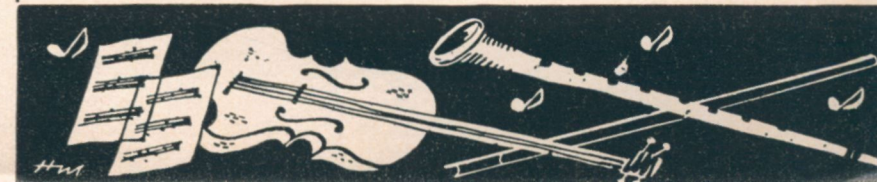
	Page
National Council Invites You to Golden Anniversary Convention.....	2
Convention Schedule.....	4
Do You Know That . . .	6
Convention Chapter Assignments.....	8
Convention Committee.....	9
They Welcome Us.....	11
Final Banquet.....	12
Women in Music.....	15
Musical Instruments Portray World Cultures.....	17
Phi Epsilon Now 25 Years Old.....	21
Sterling-Mathias Memorial Drive.....	22
Music in Hospitals Fund.....	22
The Pride of Mu Phi.....	23
In Memoriam .....	28
Convention Delegates .....	29
Notes about Mu Phis and Otherwise.....	63
Toledo Youth Orchestra.....	72
A Visit to Sable-sur-Sarthe.....	73
Directory .....	77

*Ruth Haulik, Editor*

THE TRIANGLE of Mu Phi Epsilon is published five times yearly, the first of September, November, January, March, and May, at 2642 University Ave., Saint Paul, Minnesota, by Leland Publishers, Incorporated (The Fraternity Press), for Mu Phi Epsilon, National Music Sorority. The subscription price is \$1.00 per year. Deadlines for copy: Materials for publication must reach the Editor, 1122 Adams St., N.E., Minneapolis 13, Minnesota, before the tenth of September, January, March and the fifteenth of November. Entered as second class matter at the postoffice at Saint Paul, Minnesota, under the act of March 5, 1879.

VOLUME 48

NUMBER 4





Ruth Row Clutcher, National President

# National Council

invites  
you to...

**G**olden



Eleanor Hale Wilson, National First Vice President



Elva McMullen Gamble, National Second Vice President



Wanda Anderson Burkett, National Third Vice President



Gertrude Otto, National Fourth Vice President

**A**nniversary

**C**onvention



Bernice Swisher Oechsler, National Executive Secretary-Treasurer



Ruth Havlik, National Editor

# GOLDEN ANNIVERSARY CONVENTION



*Kennecott Copper Mines*

## SCHEDULE of EVENTS



*"This Is the Place" Monument*

THE DATES: *June 22-26, 1954*

THE MAY 1954 TRIANGLE OF MU PHI EPSILON

## THE PLACE: *Salt Lake City, Hotel Utah*

### Pre-Convention, Monday, June 21

- 6:00- 8:00 P.M. DINNER, *Lion House*
- 8:30 P.M. CONCERT, *Kingsbury Hall*, "Journey of Promise" by Gladys Rich
- 10:30 P.M. SKYLINE DRIVE

### Official Opening of Convention, Tuesday, June 22

- 8:00-12:00 M. REGISTRATION, *Mezzanine Floor*
- 11:00-12:00 M. COMMITTEE MEETINGS
- 12:30- 1:45 P.M. OPENING LUNCHEON, *Lafayette Ballroom*
- 2:00- 3:15 P.M. BUSINESS SESSION, *Junior Ballroom*
- 3:30 P.M. MEMORIAL SERVICE, *Junior Ballroom*
- 4:15 P.M. MODEL INITIATION, *Lafayette Ballroom*
- 6:00- 8:00 P.M. DINNER, *Starlite Gardens*
- 8:30 P.M. ACTIVE DELEGATES CONCERT, *Assembly Hall*

### Wednesday, June 23

- 8:00- 9:00 A.M. INSTRUCTION PERIOD (required of all delegates)
- 9:15-12:30 P.M. BUSINESS SESSION, *Junior Ballroom*
- 1:00- 2:00 P.M. LUNCHEON, *University of Utah*
- 2:30 P.M. COMPOSERS CONCERT
- TOUR OF CAMPUS—Richard Hudnut Art Exhibit
- 6:00- 8:00 P.M. DINNER, *Empire Room (Hotel Utah)*
- 8:30 P.M. ACTIVE DELEGATES CONCERT, *Assembly Hall*
- 10:30 P.M. LOBBY SING (*Hotel Utah*)

### Thursday, June 24

- 8:00- 9:00 A.M. INSTRUCTION PERIOD (required of all delegates)
- 9:15-12:30 P.M. BUSINESS SESSION, *Junior Ballroom*
- 1:00- 2:00 P.M. LUNCHEON, *Lafayette Ballroom*
- 3:00- 5:00 P.M. PRESIDENT'S RECEPTION, *Governor's Mansion*
- 6:00- 7:00 P.M. DINNER, *Empire Room*
- 7:30- 8:30 P.M. TABERNACLE CHOIR CONCERT, *Temple Square*
- 8:45 P.M. ALUMNAE CONCERT, *Assembly Hall*

### Friday, June 25

- 8:00- 9:00 A.M. INSTRUCTION PERIOD (required of all delegates)
- 9:15-12:30 P.M. BUSINESS SESSION, *Junior Ballroom*
- 1:00- 2:30 P.M. LUNCHEON, *University of Utah*
- 3:00- 5:00 P.M. TOURS: *Utah State Capitol, Pioneer Museum*
- 7:00-10:00 P.M. FORMAL BANQUET, *LaFayette Ballroom*

### Saturday, June 26

- 9:15-12:00 M. BUSINESS SESSION, *Junior Ballroom*
- INSTALLATION OF OFFICERS
- CLOSING CEREMONY

### Post-Convention

TABERNACLE ORGAN RECITAL

TOURS: Brighton, Copper Mines, Great Salt Lake (swim and picnic at Saltaire), Zion National Park, Bryce National Park, North Rim of Grand Canyon, Yellowstone National Park, Glacier Park, Sun Valley, California, North West, Canada, Colorado.



# DO YOU KNOW THAT...



*Bryce Canyon, Bryce, Utah*

... Utah is known as the "beehive" state?

... At Bingham, Utah, the largest open-cut mine in North America has 42 power shovels scooping up 200,000 tons of copper a day and that the hairbreadth approach to this mine through the town's single

street is so narrow that the dogs proverbially wag their tails up and down?

... A swimmer cannot sink in the brine of Great Salt Lake, America's only "dead sea" (a comforting thought for "land-lubbers") and that granite boulders in the railroad em-

bankments weigh so little in the dense water that they literally float away during storms?

... One of the counties (San Juan) is as large as the states of Delaware, Connecticut, and Rhode Island put together?

... In any small town, the integration of church affairs and daily life is complete?

... As you travel through the big country where you "see forever," you seem to be on the rim of the world and at Crescent Junction you go over the rim and enter a new world which seems a fairyland—a technicolor fantasy?

... At Archer National monument are 88 natural arches or bridges, with Landscape Arch being the longest *natural* span in the world—291 feet?

... Uranium is one of the biggest industries in this fairyland—with oil found in country so wild that at first they had to float sketchy drilling equipment down the deep gorge of the treacherous Colorado and then cap off the oil because they had no equipment to get it out?

... There are a dozen or so canyons, among them Daniels, Red, and Horseshoe Canyons?

... Now trucks transport entire herds of sheep from one mountain range onto winter ranges in the desert instead of sheep herds trailing the highways as in the past?

... The Uinta Mountains are claimed to be the only range running east-west in the nation and here are Utah's highest mountains?

... Utah is 96 per cent scenery and only 4 per cent of its land can be cultivated?

... At Myton the honey is the best in the world because nothing

blooms in the Uinta Basin that makes bad honey: no fruit trees, not much sage—it's clover honey!

... The lakes cradled in the Uinta Mountains are a proverbial sportsman's paradise—at least 100 of the 1,000 lakes have never been fished?

... Split Mountain, near the Utah-Colorado state lines, derives its name from the Gorge of the Green river cutting through its middle from peak to base?

... Absolutely beautiful spectacles with prosaic and intriguing names like Goosenecks, Dead Horse Point, or Horseshoe Canyon take one delightfully by surprise?

... Utah has gained 25 per cent in population in the last decade.

... Cities traditionally grow westward, the east sides degenerating into slums. Just to be different, all Utah cities grow eastward.

... Brigham Young University is in Provo, Utah?

... Despite the "wildness" of much of the state, in physical layout the villages of Utah are similar to New England?

... Within one day's leisurely travel from Salt Lake are Zion National Park, where one looks up at nature's handiwork from the floor of the canyon, and Bryce Canyon National Park, where one looks down from the rim of the canyon into fabulous and colorful formations of sandstone and lime?

... At the top of Main Street hill in Salt Lake City stands Daughters of Utah Pioneers Memorial Building and that families of pioneers donated funds for showcases to hold relics of the trek across the plains and early days in Utah?

... Timpanogas Cave, near Pro-

vo, contains an underground lake?

. . . Near Brigham City, on the edge of Great Salt Lake, is Promontory Point where the 64,200-acre Bear Migratory Bird Refuge is located?

. . . Utah State Agricultural College as well as one of the finest temples owned by Latter Day Saints are at Logan?

. . . Zion's Mercantile Institution in Salt Lake City was the nation's first real department store?

. . . Six canyons surround the capitol city: City Creek, Emigration, Parley's, Mill Creek, Big Cottonwood, and Little Cottonwood.

. . . Salt Lake City is acclaimed one of the most beautiful cities in the world and that only 15 minutes' drive from the city brings you to the "This Is the Place Monument," from which place Brigham Young made that pronouncement to his 148 followers?

. . . The area surrounding this monument has been preserved as a state park?

. . . The many interesting and fascinating things to be seen, heard, and treasured wherever we may go become beautiful threads in the fabric of our experience?

## CONVENTION

### Chapter Assignments

△ Chapter members in the South Central Province (our entertaining province) are hard at work perfecting plans and making them a reality for the various events of our Golden Anniversary Convention.

△ The Lafayette Ballroom, Hotel Utah, will be the scene of our opening luncheon Tuesday, June 22. Hostesses will be EPSILON MU, SALT LAKE CITY ALUMNAE, and the Patroness Group of EM. On that evening at dinner in Starlite Gardens, PHI TAU, EPSILON PHI, EPSILON EPSILON, and FORT WORTH ALUMNAE members will be in charge of arrangements.

△ Wednesday, June 23, luncheon at University of Utah will be arranged by MU THETA and PHI XI, with dinner at the Empire Room at Hotel Utah in the hands of MU KAPPA, TULSA ALUMNAE, and OKLAHOMA CITY ALUMNAE.

△ DALLAS ALUMNAE and MU CHI will hold forth at the luncheon on Thursday at Hotel Utah, with EPSILON ZETA and EPSILON GAMMA in charge of the dinner in the Empire Room on that evening.

△ On Friday, MU RHO and DENVER ALUMNAE will arrange the luncheon at University of Utah. The final convention banquet that evening will be in the hands of XI, MU MU, PHI PI, EPSILON PHI, PHI EPSILON, KANSAS CITY, and WICHITA ALUMNAE. EPSILON MU will be in charge of the Model Initiation and the Lobby Sing will be led by Violette McCarthey.

The numbers of us who have had our "fingers in convention pies" are legion and we readily appreciate the excitement and anticipation which these chapter members are enjoying as convention time nears and their plans come closer to being a reality.

May it be said that we also appreciate the anxious moments and the very great amount of elbow grease which necessarily accompanies gigantic enterprises as national conventions. So it is with the anticipation

and joy accompanied by our understanding appreciation that we say—

SEE YOU AT CONVENTION!

## CONVENTION *Committee*



*Standing: Renee Robertson, invitations and seating; Norene Rogers, functional arrangements; Betty Gibson and Janeen Parkinson, registration; Julia Bosma, treasurer; Lois Borg, registration chairman; Charlotte June Burgess, active delegates' concerts; Karen Joseph, ushers; Dwan Young, publicity; Jeanine Heusser, printing; Pat Erickson, ushers; Katherine Perlo, pages. Seated: Helen Druke and Afton Kunz, model initiation; Luna Wootton, National Convention Chairman; Margaret Vogel, alumnae delegates' concert and hospitality. Not pictured: Norma Lee Madsen, (local) music chairman; Helen Riser, housing; Joyce Gibson, assistant treasurer; Geraldine Mariani, information; Margaret Clegg, flowers; Gladys Rosenberg, pianos and practice halls; Sally Smith, composers' concert; Helen Folland, faculty concert; Joyce Benard, transportation; Joyce Brown, meal tickets; Janyce Fisher, meal tickets; Melba Egbert and Marilyn Felt, radio and TV; Patricia Judd, housing.*

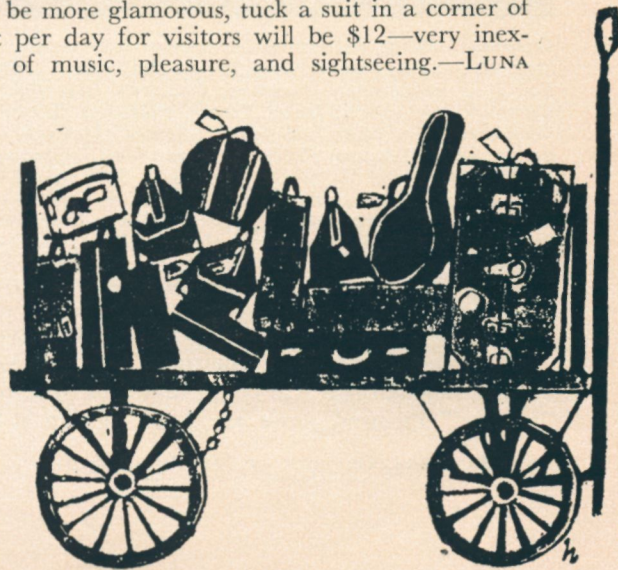
△ By the time this issue reaches you, the convention chairman and her subchairmen will be on that "last lap!" Pictured above are those sisters on whom the responsibility for the smoothly running machinery of the convention rests—the local group at Salt Lake City.



Downtown—Salt  
Lake City

*“What is so rare as a day in June  
Then if ever come perfect days—”*

△ PERFECT days is what the convention committee is planning, so summer clothes will be ideal. The banquet is formal. Saltaire furnishes bathing suits but if you would like to be more glamorous, tuck a suit in a corner of your case. Approximate cost per day for visitors will be \$12—very inexpensive for such a full day of music, pleasure, and sightseeing.—LUNA WOOTTON.



STATE OF UTAH  
OFFICE OF THE GOVERNOR  
SALT LAKE CITY

J. BRACKEN LEE  
GOVERNOR

February 9, 1954

Greetings:

The State of Utah looks forward with great pleasure to being host to the 1954 convention of Mu Phi Epsilon, which will mark the golden anniversary of this national music sorority. We feel honored that our State has been selected as the scene of this important conference; yet we think it very appropriate, not only from the standpoint of the convention's success, but also from the personal pleasure of the delegates.

Over the years Utah has been known variously as the "Center of Scenic America," and "The Friendly State." These descriptions are just as appropriate today as they were in years gone by, and they provide the clues to both the characteristics of our State and the character of its people. The scenic wonders of this State and the surrounding region are within easy driving distance, and the friendly and hospitable spirit of the people is ever present.

The people of Utah have demonstrated a deep interest in music ever since Brigham Young led his sturdy band of Mormon pioneers into the Salt Lake Valley. History records the fact that the Mormons eased the burdens of their tortuous journey across the plains by fireside singing, and this love for music and culture was later translated into the early construction of a large community theater in Salt Lake City. The passage of time has not diminished the cultural interests of our people, and today music in all its forms continues to be a favorite means of expression and enjoyment by our people.

As I have stated previously, we feel honored that Mu Phi Epsilon selected Utah as the scene of its golden-anniversary convention. We hope that our history, our people and our scenery will amply reward you for that choice. It is a pleasure for me, speaking on behalf of the 700,000 people of Utah, to extend to you a friendly welcome to our environs.

Sincerely,

JBL:mm



J. Bracken Lee  
Governor

T H E Y

SALT LAKE CITY CORPORATION

SALT LAKE CITY, UTAH

EARL J. GLADE  
MAYOR

February 24, 1954

Mu Phi Epsilon  
National Music Society,  
c/o Mrs. Luna Chipman Wootton,  
1650 Kensington Avenue,  
Salt Lake City, Utah.

Dear Friends:

Welcome to Salt Lake City, Utah as the site of your annual convention for 1954.

Surely there are no more desirable Americans than members of your own wonderful group.

Salt Lake City is acquiring an outstanding name as a music-loving center. This is no doubt due to our famous choral and symphonic instrumental organizations, which are known the country over.

Our city also has earned the reputation of being a "working convention" center. Last year we had two hundred thirty regional and national conventions here. Conventioneers like to come here because they get things done, as well as have a thoroughly good time.

We want to do every reasonable thing we can to make you feel welcome. You are coming during the loveliest month of the year in Salt Lake City, so everything should be delightfully auspicious.

As Mayor, it is my honor to reach out this word of welcome for our municipality. You, indeed, have friends in our midst.

Very sincerely yours,

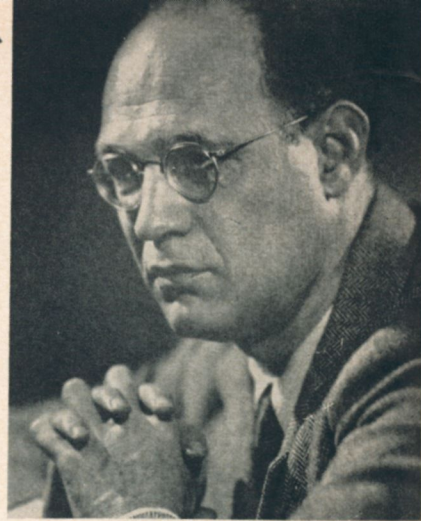
Earl J. Glade  
Mayor

Welcome  
Us!



Earl J. Glade  
Mayor

We  
Will  
HEAR  
THEM  
At Final  
Banquet



Maurice Abravanel

△ MAURICE ABRAVANEL, conductor of the Utah Symphony, has a rich musical background of international scope. Born in Salonica, Greece, of Portuguese parents, he was brought up in Lausanne, Switzerland. While studying medicine there, he was put in charge of the stage music of the Municipal Theatre, composing, playing, orchestrating, and directing an orchestra before he was 17.

At the age of 19 he went to Berlin for further music studies, having left medicine for good, and soon was assistant at the Mecklenburg Theatre, where he conducted the weekly pop concerts. Since those concerts were given without any rehearsal whatsoever, he had to develop a very clear technique of the baton that has since won him the praise of orchestra musicians all over the world. Then followed uninterrupted engagements first as Chorus Master, then as Conductor in Zwickau, Altenburg, and Kassel. At 27 he made his debut at the Berlin State Opera, where he became a frequent guest.

In 1933 and 1934 he conducted Monteux's Orchestra Symphonique de Paris, was musical director of Balanchine's *Ballet 1933* and, at the recommendation of Bruno Walter, directed Mozart performances at the Paris Grand Opera. After guest appearances in London, Rome, and Geneva, he went to Australia as director of the British National Opera Company. When the seasons in Melbourne and Sydney were over, he was retained by the Australian Broadcasting Company for an entire year, during which he conducted both symphony concerts and a series of 26 radio performances of complete operas in English.

In 1936 he accepted an invitation of the Metropolitan Opera, and was so busy during his two years' tenure that once he broke all records of that institution by conducting seven performances of five different operas in nine days. In 1938 he left the Met to conduct *Knickerbocker Holiday*, composed by his lifelong friends, Kurt Weill and Maxwell Anderson. There followed a long string of Broadway successes such as *Lady in the Dark*, *One Touch of Venus*,

*The Seven Lively Arts* and *Street Scene*, interrupted by concerts in Montreal, Toronto, Washington, Chicago's Grant Park and with the New York City Orchestra; a season with the Chicago Civic Opera, and another with the Opera National in Mexico City.

Immediately after the war, he was recalled to Australia to conduct the concerts of the Sydney Symphony Society. He found such satisfaction in developing his own orchestra there, that a year later, back in New York, he refused a five-year contract at a fabulous salary with the Radio City Music Hall to accept his present post with the Utah Symphony.

Mr. Abravanel has made the Utah Symphony distinctive. The 75 musicians, 28 of whom are women, give 45 concerts in the entire state during their five months' season. The Utah Symphony is widely heard in 13 weekly one-hour concerts, broadcast over KSL and sponsored by the Kennecott-Copper. It plays, free of charge, in every school that has a large auditorium, and has given special concerts for miners and workers in their own communities. With the

University of Utah's Combined Choruses of 350 and the Utah Symphony, Mr. Abravanel has performed Beethoven's *Ninth Symphony* and *Missa Solemnis*, Verdi's *Requiem*, Bach's *St. Matthew Passion*, Honegger's *King David*, along with performances and first-time recordings of Handel's *Judas Maccabaeus* and Leroy J. Robertson's *Oratorio from the Book of Mormon*. In recent summer festivals in the magnificent University Stadium, he has performed *Carmen*, *Faust*, *Tales of Hoffmann*, *Samson and Delilah* and Utah's own *Promised Valley* by Crawford Gates. Works by native composers have been extensively played.

Since coming to Salt Lake, Mr. Abravanel has made guest appearances with the Vancouver, B. C., Seattle, San Francisco, Pittsburgh, and Houston Symphonies. Also the Los Angeles Chamber Orchestra, the New York Philharmonic at Lewisohn Stadium and the NBC Symphony, and has been a frequent guest on the Standard Hour. In 1950 he conducted *Regina* (The Little Foxes) for which he received the Antoinette Perry Award. He is an honorary member of Phi Beta Kappa.



Elvina Truman



The Banquet  
THE DATE:  
June 25, 1954



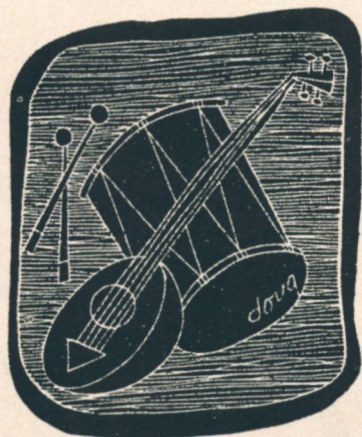
△ ELVINA TRUMAN, pianist, Mu Rho Chapter, a protégée of Tulsa Alumnae and at present a member of the New York City Alumnae group, has had two years of advanced study with the noted artist teacher and coach, Madame Isabelle Vengerova. Elvina received her early training at the University of Tulsa, where she studied piano with the late Helen C. Ringo.

Twice a finalist in National Artist Competitions, Miss Truman began to attract the attention of noted critics in 1950 when she placed as a finalist in the Patrick Hayes Award in Washington, D. C., and again in May of 1952, when she was awarded the position of first alternate in the Michaels Memorial Award in Chicago, Ill.

In the course of two years, she played over 40 concerts, appearing in 14 states, including appearances with The Chicago Symphony Orchestra, The Chicago Theater of the Air, Amarillo Symphony, and over the Mutual Network, American Broadcasting Company, and WNYC Radio Station of New York City.



△ PATRICIA JUDD was born in Salt Lake City 23 years ago. She attended the University of Utah which is where she became a member of MΦE. She has also attended the Music Academy of the West in Santa Barbara, Calif., and Los Angeles City College. Patricia graduates this spring from the Curtis Institute of Music where she is studying voice with Richard Bonelli and opera with Dr. Herbert Graf. Previously she was a student of Emma Lucy Gates Bowen in Salt Lake City. She attended the Music Academy at Santa Barbara on scholarship and is now on scholarship at Curtis. She has appeared on radio and television programs in Salt Lake and has also done work with the Utah Opera Theater and University of Utah Summer Festival. Patricia has also appeared in concert and opera in Los Angeles and appeared in the opera, *The Old Maid and The Thief*, which the Curtis Institute opera department presented in March.



Norma Lee Madsen

## in Music

△ MU PHI EPSILON chose this theme for its program in the WYNC American Music Festival series broadcast from the Carl Fischer Hall on February 18. The speaker of the evening was our national president, Ruth Row Clutcher, who spoke on the "Place of Mu Phi Epsilon in the Music World." The works heard were written by members of MΦE, several of them being prize-winning compositions.

The program opened with the first performance of *Quartet for Strings* by Dorrie Fretwell. Mrs. Fretwell studied with Nadia Boulenger at Fontainebleau and holds a master's degree from Drake University. Her quartet was played by the MΦE String Quartet from the Eastman School of Music. Blythe Owen's *Suite for Two Pianos* was given its first performance by Norma Holmes

△ NORMA LEE MADSEN, local chairman, has arranged everything musically, from planning all local music for convention, to teaching musicians, hunting up extras needed, and arranging the faculty concert. She is leading violinist in the area of Salt Lake City, playing first violin in the Utah Symphony, and has been guest artist at California colleges with exchange programs, has held the Aspen Scholarship, Santa Barbara Scholarship, and is first violinist in all ensembles.

Norma was one of the organizers of Epsilon Mu and served as its first president, being an inspiration to all of the girls. In the words of our National Convention Chairman, Luna Wootton, "when Norma is in charge, 'all goes Norma-ly!'"

# W O M E N

and Elizabeth Kurz. This composition won the 1951 prize award. Nor-

**Mu Phi Epsilon**  
NATIONAL MUSIC BONDITY NEW YORK CITY ALUMNAE CHAPTER

WNYC AMERICAN MUSIC FESTIVAL CONCERT

Featuring

ALL MU PHI EPSILON COMPOSERS  
and  
MU PHI EPSILON ARTISTS

Herman Neuman, Conductor  
Ruth Row Clutcher, Speaker

Carl Fischer Concert Hall  
165 West 57th Street
February 18, 1954  
8:30 o'clock

ma Holmes has appeared at Town Hall and with the Rochester Philharmonic Orchestra; Elizabeth Kurz has appeared with the Detroit Symphony and has received a composition prize awarded by the Lyrebird Press in Paris.

Rose Dirman, soprano, well known for her interpretations of oratorio and concert, sang these songs composed by Mu Phi: "Gazing at the Moon"—Norma Holmes; "Marlene"—Elizabeth Kurz; "Little House"—Amy Worth; "Legend of Yonah"—Bonita Crowe; and "Patchwork Quilt"—Ruth Bradley. The first two were accompanied by the composers and the final three by Ruth Bradley.

Mabel Daniels, one of the best known women composers of today with numerous compositions to her credit as well as a doctorate degree from Boston University, was represented by her "Three Observations for Woodwinds," played by Whitney Tustin, oboe; Ernest D. Bright, clarinet; Sylvia Deutscher, bassoon. The three "Observations" are (1) Ironic; (2) Canonic; (3) Tangonic. "The Mu Phi Epsilon Creed," as set to music by Joanne Baker, was sung by the sorority's choral group, with the composer at the piano. She also played her "Piano Sonata," which won the 1951 award. Joanne is in-

structor of piano at the University of Kansas City. The setting of "The Creed" was a 1953 prize winner.

Elizabeth Gould, Toledo, is the 1953 first prize winner of the MΦE Awards. She appeared with the Detroit Civic Symphony in Toledo and Chicago and on March 20 appeared as soloist in her piano concerto with the Little Symphony, with Thomas Sherman conducting. Elizabeth Gould's "Violin and Piano Sonata," with Elliot Magaziner as guest artist and the composer at the piano, was played at this time. Mr. Magaziner has appeared with leading orchestras and in recital throughout this country and Europe and is now on the music staff of CBS.

The program was climaxed by the composition which was written especially for the 50th anniversary of



*Mu Phi Epsilon String Quartet-Eastman School of Music: Doris Bogen, violin; Marjorie Cowan, violin; Alcestis Bishop, viola; Norma Marcus, cello.*



*Elizabeth Kurz, radio chairman, Esther Richardson, president of New York City Alumnae, Ruth Row Clutcher, Herman Neuman, music director of WNYC.*

MΦE—"The Golden Year" by Dorothy James. She is another of Mu Phi's talented composers and is a

(CONTINUED ON PAGE 27)

## Musical Instruments



BY ELIZABETH AYRES KIDD

*Director, Division of Musicology, New Trier Township High School, Winnetka, Illinois*

△ THE study as well as playing of musical instruments belonging to other countries and eras provides not only an a priori experience with many instruments discussed in music history courses but likewise an even more valuable asset, namely, a better understanding and appreciation of the music cultures represented by these instruments. A corollary of this deeper insight is a realization of the musical debt one's own country or culture owes the instruments and music systems, both ancient and modern, which have developed in other parts of the world.

A good example of the living music of a former era is afforded by ancient Greece. Its modes of music expression (the harmoniai) exist in much of the folk music of the world. For instance, a pair of Javanese cane



## Portray World Cultures

flutes (soeling), used on certain occasions with the native orchestra (gamelan), gives the ancient Greek Dorian and Dorian libation modes, respectively.\* A beautifully incised Celebes Island flute, with extension piece for lowering the fundamental, produces the mysterious quality of the old hypodorian mode. Whence came the violin and mandolin of the West? The national instrument of ancient Greece (kithara) set in motion the long line of development to the viol family, while the lyre (lyra), appropriated by the Western World as its symbol of music, launched the lute-mandolin pathway. On the other hand, the national instrument of the West (piano) illustrates the importance which the struck-string action, emanating from the East, has acquired—due in great part to the

\*K. Schlesinger: *The Greek Aulos*, pp. 334-36; 487-95.

influence of the dulcimer. Even today the dulcimer is a well-known and widely-distributed instrument, from the Hungarian type (cymbalom), the strings of which are vibrated by means of two padded, wooden mallets, to the Chinese form (Yangch'in), for the playing of which two resilient slivers of bamboo are employed.

There are two kinds of museums of musical instruments: "passive" and "active." Both are important. In the passive type, collections are generally locked in glass cases, informatively labeled and kept thus, in safety and on view, for all who visit the museum. In the active kind, the instruments are kept in playing condition at all times. They are frequently taken out of their repositories to be used in demonstrations for groups of people who are studying an era or country to which the music culture set forth by the native instruments can make a valuable contribution. Such is the type and function of the museum of musical instruments in the Musicology Division at New Trier Township High School. Here the musicology studio consists of a suite of three rooms, one for the office and research materials, one for the museum of approximately four hundred musical instruments gathered by the director from many parts of the world, and the other for the lecture room. This rather extensive musicological setup serves principally for lecture-demonstrations to academic classes within the school. However, it also includes, upon request, general groups from the community. Thus, not only does a museum conquer the traditional inactivity of its constituent parts but musicology puts its research materials im-

mediately to public use instead of leaving them encased, more or less indefinitely, within the archives of a library.

The musicological work is correlated regularly with the social science, foreign language, and English department of the school. However, it also permeates the work of other departments. When *Twelfth Night* was given last year by the Dramatics Department, the stage music for the play was presented by means of harpsichord, lute, recorders, tabor-and-pipe, and viola. All of these instruments, with the exception of the viola, and the student players came from the Musicology Division. At this point, a brief survey of some of the lesson procedures in two of the cooperating departments, social science and foreign language, will be given.

In the realm of social science, two music lessons of particular interest occur in the series presented for the Latin America and Far Eastern history classes: pre-Columbia and China. For pre-Columbia, the Inca music obtained from the Andean Indian is played on the kena, notched flute of the llama herder. Traditional Aztec melodies are performed on the tlapitzalli, ancient clay ocarina. Two other pre-Columbian musical instruments which emphasize the uniqueness of this culture are the Aztec drum, known as the teponaztli, and the clay whistling jar from the coastal civilizations of ancient Peru. The teponaztli is a horizontal log drum which produces two or three tones when struck by a mallet on the two or three wooden tongues left above the interior, hollowed-out space. One of the whistling jars in the musicology collection belongs to



*Latin American Musical Instruments from the collection of Elizabeth Ayres Kidd, housed in the Musicology studio of New Trier Township High School, Winnetka, Ill. Elizabeth Ayres Kidd is playing a marimba from Guatemalan highlands. Other instruments pictured are: Drums—front row (left to right): Aztec drum (teponaztli), Mexican drum, Guatemalan drum; back row: Vodoun (Voodoo) drum—Haiti, Congo drum—Cuba. Panpipes—on top of Guatemalan drum: smaller ones (made of cane)—Peruvian, long one (made of bamboo)—Guatemalan. General—on white-covered table: maracas (from Caracas)—Venezuela, ocarina (tlapitzalli)—pre-Columbia, gourd and scraper—Panama, whistling jar (Mochica culture)—pre-Columbia, two notched flutes (kena—Peru), lying on llama mat; On Steinway piano: two native Indian figurines, balsa-wood guitar—Panama. Around the studio: Orchestral chimes in back of the piano; on left, one of the cases of musical instruments; on right, music shelf (and the inevitable radiator)!*

the Mochica culture—4th to 7th Century A.D. It is, in reality, two clay jars connected at the bottom by a hollow passageway of clay and at the top by a clay handle. Each jar has a spout. Over one is the figure of a puma within which is embedded a clay whistle. The other spout is uncovered and, when blown into, forces air through the embedded whistle. Or, if water is poured into the open spout and the double-jar

tipped upwards and downwards by means of the handle, a weird breath-intake sound precedes the whistle. Is not this process of air displacement by water really the hydraulic organ principle in ultra simplicity? Another instrument which also possesses a few basic organ principles is the reed organ of China (shêng). It consists of a semicircle of bamboo pipes inserted into a wooden, teapot-shaped container. Each pipe is provided with

a free reed of brass, attached to its base by means of wax. In the Far Eastern history lessons, several successive days are devoted to the religious, folk, and theatre music and instruments of China. Native instruments such as the shêng, Buddhist gong and fish block, various modal and pentatonic flutes, two-string violins (the ravanastrons of music histories), three-string guitars, dulcimer, et alia, are demonstrated in their proper category. The class sings a simple melody to the accompaniment of one or more of these instruments. The director, when demonstrating musical instruments, plays thereon folk or popular music selections. Virtuoso playing is left to the native performer and is projected by means of disc recordings or by tape recordings made on location by the director.

In the realm of foreign languages, the Musicology Division has compiled mimeographed songbooks for the Latin, French, Spanish, and German classes. The books consist of folk, art, and popular songs as well as rounds and canons. Even the Latin books compete in up-to-date-ness with those of the other languages because of such popular songs as "Pontadoon" and "O Delectabile Mane," representing translations of "Brigadoon" and "O What a Beautiful Morning" made by the chairman of the Foreign Language Department. The language groups gain added facility in pronunciation and vocabulary by singing these songs, and they also obtain an understanding of the musical culture of the mother country by listening to vocal and instrumental recordings. As an example of the language correlation work, some of the units and materials

featured in the Virgil year will now be discussed. The first part of a Virgil class period is given over to the ancient Greek and Roman materials, which are presented by means of kithara, lyre, aulos or tibia, and syrinx. For instance, several of the excerpts of recovered music of ancient Greece are played on the kithara. Epic poetry is studied and chanted, especially that of Virgil, so that the meaning and duration of long and short syllables may be experienced vocally. In this way music is of great assistance to the uninitiated student of epic metre. There are also units on temple worship, using the famous "Hymn to Apollo," as a music example: on lyric poetry (especially the odes of Horace), featuring the ancient "Invocation to the Muse," with lyre accompaniment, as well as the modern hymn "Integer Vitae"; on the drama, both tragedy and comedy, using the music fragment from the "Orestes" of Euripides and exemplifying the ever-changing rhythms which occur in the "Mossellaria" (Haunted House) of Plautus. In order that the class may experience the Plautine rhythms musically the director has made a modal setting of Philoche's speech. Following these "ancient" units there is the usual singing of general Latin songs by the class. The final part of the class period is devoted to examples of the modern use of classical materials. For this purpose various recordings are played: the Sacrificial Dance from Stravinsky's "Rite of Spring" to show modern changing rhythms as compared with those of Plautus; Purcell's "Dido and Aeneas"; Berlioz' "The Trojans"—a beautiful, musical exposition of the

Virgil story; Randall Thompson's settings of Horace's "Odes;" and many other examples of appropriate recordings. The playing of Arensky's "Péons" at the piano gives the class a feeling of the five rhythm (Cretic metre) so favored in antiquity. During the Virgil year classical myths are reviewed. This procedure affords an excellent opportunity for the presentation of such recordings as Ravel's "Daphnis and Chloe" suites or Saint Saëns' "Omphale's Spinning Wheel." Even an Aeolian harp has a place in this part of the lesson! To summarize, then—the fourth year Latin student, through his music work, increases his understanding and appreciation of epic and lyric poetry, assimilates the true meaning of scansion, and gains not only information regarding the use still made of the ancient learning but obtains at the same time a wide knowledge of modern musical masterpieces.

The slogan of our contemporary American society is "understanding others." A study of the music and musical instruments of other cultures is an effective way of enhancing this slogan. Only through such knowledge can the young American student approach with understanding the scales, intervals, manner of singing and playing, and types of musical instruments which differ from his own. Music in connection with the classroom study—a procedure existent at New Trier Township High School for the past 15 years—heightens the perspective of the group and brings into clearer focus a universal point of view. The golden laurel wreath of the ancient Greek musician (kitharoedos) has indeed descended upon the modern music correlator, that research artist whose unheralded but significant work reaches the innermost recesses of his school!

## Phi Epsilon Now 25 Years Old



Phi Epsilon Chapter—At piano: Janice Keraus; Hildred Schmidt, president. Back row: Russelle Seeburger; Ruth Keraus; Mariette Simpson, adviser; Maxine White; Esther Longenecker.

Emporia! They are celebrating their 25th anniversary this spring, and how nice it is that they can celebrate such a meaningful event during our Golden Anniversary Year.

Included in their plans for "celebrating" is their third annual program for Newman Memorial County Hospital in Emporia. This is one of the highlights of their year. They also will sponsor the annual Mu Phi Stunt Night, proceeds of which will go for national projects of Mu Phi Epsilon and their own chapter expenses.

All good wishes to members of Phi Epsilon as they begin their second quarter of a century!

△ CONGRATULATIONS are in order to Phi Epsilon at the College of



"Any man can count the seeds in one apple, but no man can count the apples that will come from one seed."—Chinese Proverb.

△ THE Sterling-Mathias Memorial Fund Drive closes June first. Never has the call to duty been clearer nor the opportunity for useful service greater. Let's go into action now!

Mu Phi Epsilon is truly an inspiring organization which is based on well selected ideals and a firm foundation. It is these ideals which we must perpetuate and spread to all corners of the earth. We are planting seeds as we grow and we cannot help but reap a good harvest. What we do today will help these seeds grow. Will you do your part? Do you want your name placed on the Honor Roll to honor our Founders who did so much for us? You do not have to contribute a large amount—a dollar per member would help us realize our desired goal. Yes, your Chapter or Club has contributed perhaps, but what about you?

I have endeavored through letters and articles to make you feel a small gift

would be welcome. A contribution of any size, no matter how small, is worthwhile, useful, and significant. In this, my final message to you as Chairman of the Sterling-Mathias Memorial Fund, I thank you most sincerely for your excellent coöperation, interest, and inspiration. I hope the coming years in Mu Phi Epsilon will bring to you a big measure of happiness and success in all the worthwhile things of life, and much success, too, in the fine work you are doing for your sisterhood.

Don't let June, 1954, slip away until you have done your part.

Please send your contribution to our National Executive Secretary-Treasurer, Bernice Oechsler, 6604 Maplewood Avenue, Sylvania, Ohio.

*Let's go over the Top!*

*Faithfully and gratefully,*

HILDUR SHAW, National Chairman  
Sterling-Mathias Memorial Fund

## Music in Hospitals



△ HAVE you remembered our fund for MUSIC IN HOSPITALS AND MUSIC THERAPY? Mail your gifts to National Executive Office, designating whether you wish the money to be used for Music Therapy (and thus given to National Association for Music Therapy) or to be used for Music in Hospitals, as in the past. NAMT is laying plans to incorporate as a non-profit organization thereby enabling the collection of funds to establish a Research Foundation, and I believe we could find no better cause to support, at this point, than this Foundation.

Teachers—tell your high school age students of this new horizon in the field of music and the curative arts. Try to interest them in exploring the opportunities

and possibilities of the work. See that the Vocational Guidance Department of your school or college has the available literature on hand or refer them to your national chairman for it.

Remember to send me any report of hospitals activities that you carry on individually or as a group, since it is important that ALL services should be recorded in the annual report of Music in Hospitals.

Let's make this a "More in '54" year for Mu Phi—More promotion; More participation; More contributions; More reports.

VIOLA M. ANDERSON,  
National Chairman,  
Music in Hospitals  
and Music Therapy.

## Teaching Is Its Own Reward

△ THESE WORDS express the philosophy of Dr. Bess V. Cunningham, Toledo Alumnae and head of the University of Toledo's department of elementary education. She was confronted with the challenge to mould future teachers back in the "fabulous twenties," and she has been doing just that ever since.

Dr. Cunningham had interrupted her study at Teachers' College at Columbia University to journey to the West Coast to supervise the kindergarten department at the San Francisco school. Querying Dr. Frederick L. Burk, then head of California's State Teachers' College as to what he wanted her to teach, he answered: "I don't give a high whoop what you teach, just develop teachers."

Among the requisites for the successful teacher, Dr. Cunningham believes that a genuine love of people is the prime one. Among the many rewards of teaching, not the least of these is the personal satisfaction which comes with the evidence of growth and maturity in one's pupils.

Always profoundly interested in people and particularly in children, Dr. Cunningham hit upon teaching as a career from an "opportunistic" viewpoint. The university had not yet begun to offer elementary school

training, so she chose the next best course. Anxious to go to school and yet live at home, she enrolled in the Mary E. Law Kindergarten Training School and later obtained a B.S. Degree in education from Toledo University.

She urges and cautions teachers of tomorrow to treat the child as an individual and is a firm believer that tensions in international relations are related to tensions in the classrooms. She therefore urges her students to strive to parallel school life as much as possible with everyday living and to remove unnecessary tensions from the classroom. To parents who see their children off to school for the first time, Dr. Cunningham lists two of the many ways in which they can "condition" their youngsters' attitude toward school: "Encourage them to develop faith—faith in humanity as



OF MU PHI

fair and square individuals; faith in themselves and faith in the world in which they live. The 'know-how of coöperation' with others also is an asset to the child to whom going to school is a great, shining adventure."

In conjunction with Dr. Rudolph Pintner, with whom she studied at Ohio State, where she received her M.A. in psychology, she developed the Pintner-Cunningham primary intelligence test. Holder of a Ph.D. in psychology from Columbia, she also is the author of the books, *Family Behavior* and *Psychology for Nurses*. The former was the winner in 1937 of *Parent's Magazine* medal as the best book of the year for parents. She has been a frequent contributor to psychological journals and *Parent's Magazine*, serving as editor of a page in that magazine, devoted to parental problems. She was the holder of a Grace Dodge fellowship when at Columbia and at present is a fellow in both the American Psychological Association and the American Association for the Advancement of Science.

## ASCAP Composer Is Talented Mu Phi

△ THE Los Angeles Alumnae Chapter of MΦE is proud to have as a member a woman who is active in the field of composition and who is also an interesting and charming woman. Gladys Rich's song, "Tingalingaling," recently won first prize in the MΦE Song Contest for Fun Songs, and fun with music has filled her life. As a small child she moved with her parents from Philadelphia, Pa., where she was born, to Ogden, Utah, where she lived most of her life. She attended Sacred Heart



Gladys Rich

Academy in Ogden, National Park Seminary in Washington, D. C., and the New England Conservatory in Boston, Mass., where she first took up the study of music composition and joined Beta Chapter of MΦE.

Gladys served in the Entertainment Department of the YMCA in France the last year of World War I, after which she entered the University of Utah. While in school there she became associated with the well-known poet Phyllis McGinley and between them they wrote prize-winning sketches for the Annual Song Fest for Kappa Kappa Gamma sorority, all the time they were in school. These songs were later published by Carl Fischer and J. Fischer & Bros. as short one-act operettas for young people. Later they collaborated on two long operettas for schools, both of which were published by G. Schirmer.

Gladys drew upon her Mormon heritage and background when she composed the musical score for

Claire Stewart Boyer's text, *The Triumph of Faith*. In recent years she has written and produced another Mormon Cantata called *Journey of Promise*, which pictures the pioneers crossing the plains to Utah, and this cantata is to be presented on opening night of the National Convention in Salt Lake City this year. In 1939 when she visited the Hawaiian Islands, she gathered material for a colorful Hawaiian operetta called *Aloha Sugar Mill*. This operetta has been produced several times with great success, and our chapter was privileged to hear a shortened version in costume at one of our meetings. Perhaps Gladys' best known compositions are her songs, "American Lullaby," published by G. Schirmer, and "Beneath a Southern Sky," published by J. Fischer.

Now Gladys makes her home in Los Angeles and devotes most of her time to music. She is a member of ASCAP.—RAMONA B. MATHEWSON, *Historian*.

Hilda Butler Farr



## From Music to Poetry

△ THE name of this talented sister is indeed familiar to all Mu Phis who have read and enjoyed her fine poems published from time to time in THE TRIANGLE. What many of us do not know, however, is that her poems are published in internationally circulated magazines and newspapers and featured on radio and TV programs. Many thousands of people hear Hilda in her hundreds of programs from New York to Albuquerque, N. M.

Hilda Farr was born in Rochester, England,—the Charles Dickens countryside—with a great talent for music. Among prizes which she won in competition at only 14, is the famed Obermeier piano prize which she brought to this country and which is today one of her most cherished possessions. At 16 she won two scholarships and the National prize from Trinity College of Music, London. After her arrival in the United States she composed several successful operettas and piano solos. Her wide experience in music and composition made it relatively easy to turn to the soul-stirring, heart-warming, inspiring verse which has brought such full response and recognition from readers in all parts of the world. She is perhaps best known for her more than 1,000 contributions published in the "Wake of the News" column of *The Chicago Tribune*. The Wake Contributor's Banquet was originated by her in 1942 and she has continuously served since as Chairman and Toastmistress of the annual Homecoming.

Hilda Butler Farr's adaptation of Charles Dickens' immortal *The*

*Christmas Carol* has been acclaimed by critics throughout the English speaking world. Her most recent achievement is "The Life of Christ" in verse. She conducts the "Farr Horizons" column in *The South End Reporter*, widely circulated newspaper on Chicago's far South Side, and has been biographed in *Who's Who in America*. She is a member of Dickens' Fellowship Selected Honorary Member of the Eugene Field Society, National League of American Pen Women, Women's Chicago Beautiful Association, and the Chicago Alumnae Chapter of Mu Phi Epsilon. Her "Tribute to MΦE" appeared in the March TRIANGLE "Echoes of Golden Anniversary Observances."

## Top Flight

### *Is Blind Mu Phi*

△ ROCHESTER ALUMNAE CHAPTER had a special interest in observing National Week for the Blind which coincided with the Golden Anniversary celebration in November. In a joint recital with the Mu Upsilon performers they presented Helen Howe, pianist, who played "Valse Caprice" by Cyril Scott, "Album-leaf" by Scriabin, and "The Sea" by Palmgren.

Although she does not see, Helen has not let that interfere with an interesting and helpful life. She studied at the Eastman School of Music. Besides being a good pianist, she is secretary of Rochester Alumnae Chapter and is an efficient typist. Her fabulous memory for people and events and even for her secretarial reports is a constant wonder to her Mu Phi sisters.

In addition to these activities, she

maintains a very large correspondence with persons all over America and in Europe and Africa. And as if that were not enough to keep her busy, she does expert weaving and knitting in her spare time. We all join members of Rochester Alumnae in their pride of Helen.

## Own Music Store

### *In Spokane for 25 Years*

△ "You can get a pretty good idea of people from the sort of music they buy" is a reflection of Ruth Sampson Ayers, immediate past president of the Spokane Alumnae Chapter. She is currently completing the 25th year of business under her own name, and has gained recognition for her specializing as an authority in sheet music. Her freshness and enthusiasm mark the success of her many activities as well as the business in which she is engaged. She loves mail orders and helping people get what they want and enjoys opening the packages of music the store orders. "Even though we get them every day, it's always exciting to open a new package and look at the music." Her store handles sheet music, music books, and musical instruments and is a distributor over much of the northwest of the Hammond Organ. Up until 1945 it was known as the Ruth Sampson Company and since that time the firm name was changed to the Sampson-Ayers Music Company.

Ruth attended Cornish Music School as the holder of a scholarship in 1929. She coached in voice with Andre Kostelanetz, Francis E. Woodward, Lazar Samoilaff, and La Verne Kimbrough and had a summer



Ruth Sampson Ayers

course in conducting under Father Finn at Gonzaga University in 1934. She has been soprano soloist at the Westminster Congregational Church, Central Methodist Church, director of music at Temple Emmanuel, and soloist at the Cathedral of St. John the Evangelist. Ruth was also choir director at Central Methodist church and, in commenting on this, bantered, "The reason I was choir director was because I'd cook the church suppers." In the course of her long church career, she has cooked many a church supper. Smorgasbords are her specialty and she claims that she is going to run one when she closes the music business.

Ruth Ayers is now the president of the women's auxiliary to the Spokane Philharmonic, having been on the original board of the Spokane Philharmonic when it was reorganized several years ago. Until she resigned during World War II, she

was state vice president of the Federated Music Clubs. She was a member of the original Chamber of Commerce music committee that puts on the Christmas program and was its chairman when it sponsored productions of the oratorios, *Elijah* and *The Messiah*.

In addition to her musical contributions to the city, Ruth is a member of Daughters of the Nile, PEO Sisterhood, past president of Zonta, and is at present vice president of Boys and Girls Week committee, one she has served on for many years. Her husband, the Rev. Stephen Ayers, is an ordained Congregational minister and holds the rank of Commander in the Naval Reserve. His wife met him when he was stationed at Farragut Naval Training Station. And since their marriage, he has been associated with her in the business.

## *Women in Music*

(CONTINUED FROM PAGE 16)

faculty member of Ypsilanti Normal College. Dr. Herman Neuman, music director of WNYC, conducted the Choral Ensemble composed of members of MΦE and ΦMA fraternity from Columbia University in this first performance of the work in New York. The choral ensemble was composed of: Rose Dirman, Jean Westerman Gregg, Eleanor Parker, Esther Richardson, Gertrude Otto, Gladys Shafer Weiland; and Sinfonians Bernard Dulke, Charles Hummer, Richard Kezerries, Curtis King, Calvin Muller, and Jay Andrews.

We are indeed happy and proud that this event could be a part of our Golden Anniversary Celebration.

In

# MEMORIAM

Mary Morrow Doty, *Phi Nu*, died in January, 1954. Mary had been a brilliant young student and pianist when at UCLA where she was initiated into Phi Nu in 1944. Her splendid intellectual and musical abilities were evidenced in her campus appointment as Research Assistant to Dr. Walter Rubsamen during her graduate year when they worked on an Elizabethan Music project. After receiving her bachelor's and master's degrees at UCLA she accepted a county music supervision position in Northern California, with headquarters in Redding. While in recent years Mary Morrow Doty had lived several hundred miles north of Los Angeles, her many friends among the faculty and graduates of UCLA realize that a very fine young woman, as well as an excellent musician, has left us. —HELEN C. DILL, *Beverly Hills Alumnae*.

\* \* \*

Marlene McKinley, *Epsilon Rho*, died unexpectedly on January 28. She sang with the freshman women's sextette, was a frequent soloist in Opera Workshop productions, and sang in the a capella choir. She was a member of the Montana State University band and orchestra and was one of the charter members of Epsilon Rho. The chapter as a group and individual members within the chapters have contributed to a Music School Fund for a memorial to her.

Miss Jean Belcher died in Oklahoma City, June, 1953, at the age of 91 years. She was a faculty charter member of Mu Kappa Chapter at the University of Oklahoma which was established in 1922. She left an annuity for the University to set up a Jean Belcher Annual Award of \$50.00 to the junior girl in the music department who makes the highest grades.

\* \* \*

Helen Lyon Jones, *Washington Alumnae Chapter*, died suddenly in New York City on March 24, 1954. She was the wife of Joseph Holton Jones, well-known architect, of Wilmington, Delaware. Helen was the first woman to receive an International Youth's Distinguished Service Award for work in the Christian Endeavor field. She was the vice president of the Executive Committee of the World's Christian Endeavor Union. She worked hard for the Trinity Episcopal Churches of Wilmington, Del., and Lenox, Mass., and for many other churches in Wilmington. It was indicative of her splendid life that her wish was for contributions to be made to the St. Matthew's Protestant Episcopal Church for the Chinese, in lieu of flowers. Hers was a "World Love" and all faiths and creeds mourned her passing. She had a great love for music, a great zest for life and all who knew her were enriched by her life.



## Introducing OUR GOLDEN CONVENTION Delegates

MUSIC DELEGATES

Pages 29-35

BUSINESS DELEGATES

Pages 36-63

EUGENE ALUMNAE QUINTET: Kathryn Asay, piano; Mollie Hardin, violin; Constance Elkins, violin; Gwendolen Lampshire Hayden, viola; Roberta Lathrop, cello. The group was formed four years ago and has worked and performed together since that time. Much of their time has been given in performing for Mu Phi Epsilon and the scholarship fund. They have also performed considerably as an independent group. During the summer of 1953, the string quartet coached at Mills College, with Jac Gorodetsky of the Budapest String Quartet, while the quartet was in residence at the college. Before performing, the Bloch Quintet for Mu Phi Epsilon's Morning Musicales series, the quintet coached with Mr. Bloch on the work, at the composer's studio. Standing is Helen McPetridge Johnston, Mr. Bloch's secretary and pupil in composition.







JANET MARSHALL, Lincoln Alumnae



HILDRED SCHMIDT-RUTH KERAUS, ΦE



AVA COMIN CASE, Ann Arbor Alumnae



ROSE BRUNO, Maumee Valley Alumnae



MARJORIE CHRISTIANSON KING, Cedar Rapids Alumnae



DONNA NAMISNAK, Wichita Alumnae



DIXIE BENNETT, EE



JANET STEWART MARSHALL, 'cellist, was a student of Hans Hess, Luigi Silva, and Dudley Powers. She studied at Cornell College, Eastman School of Music, and in 1949 earned her Master of Music Degree at Northwestern University. She won the Young Artists Contest of Chicago as well as honors in Illinois Federation of Music Clubs, and at Northwestern appeared as soloist with the University Symphony. She taught at Ohio University for three years prior to her marriage. At present she and her husband are teaching at Nebraska Wesleyan University in Lincoln. Mrs. Marshall plays with the Lincoln Symphony and has given numerous solo and chamber music recitals throughout the Midwest.

RUTH KERAUS, a senior from WaKeeney, Kan., and HILDRED SCHMIDT, Newton, Kan., also a senior, will represent Phi Epsilon Chapter as music delegates. Ruth is majoring in oboe and

Hildred in flute and both plan to teach music after graduating with the Degrees of Bachelor of Music Education and Bachelor of Arts, respectively. Both girls play with the College of Emporia Chamber Orchestra and are members of the College of Emporia Chorale, Hildred being one of the du-piano accompanists. Their senior recitals included Hindemith's *Sonata for Oboe*, Scarlatti's *Concerto No. 1 for Oboe*, Piston's *Sonata for Flute*, and Telemann's *Suite for Flute and Strings*. Hildred is now serving as president of Phi Epsilon Chapter and Ruth held that office her junior year, attending the 1952 National Convention as a business delegate.

AVA COMIN CASE, president of the Ann Arbor Alumnae Chapter, attended Oberlin College and the University of Michigan, receiving the A.B., B.M., and M.M. Degrees from the latter institutions. She studied piano in Italy in 1937 with Arthur Schnabel and later in New York and Ann Arbor in his master classes. She has concertized extensively in the mid-west as accompanist, soloist, and as a member of a two-piano team. She has been a member of the piano faculty in Huron College in South Dakota and at the University of Michigan since 1929 and is, at present, an assistant professor in the latter institution. She has been chief adjudicator in Michigan for the certification pro-

gram of the MMTA and appeared as speaker at their forums and before music teachers' groups throughout the state. She is a member of PEO and IKA. From 1940-42 she was National First Vice President of Mu Phi Epsilon and from 1942-48 served as National President for the Sorority. From 1948-50 she was Vice President of the Professional Panhellenic Association and at present is serving on the Honorary Advisory Board of that organization. She is married to Dr. Lee O. Case, a professor in the Department of Chemistry at the University of Michigan, and is the mother of two sons, both graduates of the University.

ROSE BRUNO, contralto, received her training in Otterbein College, Westerville, Ohio, Mary Manse College, Toledo, Ohio, Chatham Square Music School in New York City and has had private study and coaching in Toledo and Chicago. She was state winner for voice, Ohio Music Teachers Association, soloist at convention of Music Teachers, soloist at Akron Art Institute in 1950, sang in the trio at the Mu Phi Epsilon Interlochen Dedication in the summer of 1953, soloist in *Messiah* performances at Van Wert, Ohio, and Bowling Green State University in 1953 and has sung on many Mu Phi Epsilon programs and Monday Musicales programs. Rose is Maumee Valley Alumnae Chapter's business and music delegate.

MARJORIE CHRISTIANSEN KING is a graduate of Drake University where she received her BME Degree. While at Drake she was soprano soloist with the Drake capella choir, men's quartet, soloist at several churches in Des Moines, and elected to National Collegiate and Campus *Who's Who* and Margaret Fuller (now affiliated with Mortar Board). She was soloist at radio station WHO and one of 13 guest soloists on the Hour of Charm program in 1944. She is president of the Cedar Rapids Mu Phi Alumnae Chapter for the new year and musical director at Kenwood Presbyterian Church.

DONNA NAMISNAK, Wichita Alumnae Chapter, studied summers with Arthur Kraft at Eastman Conservatory, Rochester, N. Y., and with Russell Holliger at Kansas City Conservatory, Kansas City, Mo., during her high school years. She was graduated from Stephens College for Women, where she studied with Ernest Cox and coached with Anna Froman Hetzler. At Stephens she was soloist with the Concert Chorus, sang every Sunday on the radio, appeared on tele-



vision in St. Louis, Mo., and was vocal soloist chosen to sing with the Burrall Symphony at graduation. She attended Northwestern and completed her study at the University of Southern California. While there, she was soloist at the Los Angeles First Presbyterian Church. In Wichita she appeared with the Wichita Symphony and 300 voices as contralto soloist in *The Messiah*. At present she is soloist at Central Christian Church.

DIXIE BENNETT, 19, cellist, a junior at Texas Christian University, Fort Worth, is Treasurer of Epsilon Epsilon Chapter. She plays with the University Symphony Orchestra, Fort Worth Civic Opera Orchestra, and the Wichita Falls Symphony Orchestra. In her junior year at high school she was named in *Who's Who* as the outstanding musician in the orchestra. She was selected two consecutive years in high school to play in "The All State High School Symphony," under the directorship of Dr. N. De Rubertis of University of Kansas, and Emanuel Wishnow of University of Nebraska. She has studied cello with Gene Baugh, Mary Louise Baker, Ira Lehn, and Lev Aranson.

GLADYS GLADSTONE, Salt Lake Alumnae, gave her first full length recital at the age of seven in Utica, N. Y. When she was 15, she received a scholarship of \$4,000 to further her musical studies in New York

City. Her studies in New York were begun under Alexander Lambert, pupil of Liszt, and later included work under Hortense Monath, Paula Kessler, Paolo Gallico, and Artur Schnabel. She won first place in national contest of Federation of Music Clubs "Young Artists' Contest" in 1943 and has appeared many times as soloist with orchestras under leading conductors such as Alfred Wallenstein and Maurice Abravanel. Recently Claudio Arrau termed her as "one of the few who are emotionally attuned to play music of any style."

LUCRETIA CRUM is a senior in the School of Fine Arts at the University of Wichita, and will receive her Bachelor's Degree this June. Music has always been the prime interest in her life, and she has appeared on and given many recitals. She will appear with the University Symphony on their Concerto-Aria concert in May. She will also play for Mr. Leonard Pennario while he is in Wichita to appear with the Wichita Symphony. Music became her profession as well as a pastime while she was still in high school, having taught piano and organ and she was a church organist for seven years. She holds an applied music scholarship at the University, and was also one of the winners of the Wichita Alumnae Chapter scholarships. She also was a recipient of a parttime work scholarship at Interlochen in



GLADYS GLADSTONE, Salt Lake City Alumnae



LUCRETIA CRUM, ΦΠ



MARJORIE ANN WEST, MM



JOANN MARTIN, ΦΤ



MARY ELLEN NEWPORT, ΦΞ



BETTY MONETTE, ΕΙ



AFTON KUNZ, ΕΜ



JOYCE SADLER ORR, Denver Alumnae



ANN PARKER, ΜΧ



FONTAINE ZIFF, ΜΘ



ANNITA POWERS, ΕΙΙ

1951. Besides her music activities on the campus she is interested in many extracurricular activities. She has held and now holds offices in many organizations: AGO, Associated Women Students, Student MENC, Alpha Tau Sigma social sorority, and Student Council.

MARJORIE ANN WEST, Mu Mu, is a graduate student in violin. Starting her musical career early, she was concertmaster of her high school orchestra. She attended the University of Tennessee, where she was soloist with the University Training Orchestra, played with the Faculty Quartette, served as music director of the university radio station, was vice president of Pi Delta Phi, and was a member of Mortar Board. She has played with the Knoxville Symphony, the Oak Ridge Symphony, and the East Tennessee Orchestra. She was graduated *cum laude* from the University of Tennessee and now is working toward a master's degree in applied violin at Kansas State College. She has studied with William Starr and currently is studying with George Leedham.

JO ANN (JODY) MARTIN was born in Waco, Texas. Her parents are Mr. and Mrs. John D. Martin, who now reside in LaPorte, Tex. Jody, a music education major at North Texas State College, Denton, is now doing her third year's work there. She was active in music, journalism,

speech, and dramatic work while in high school, and carried her interests on into her college studies. She received a vocal scholarship to NTSC and is a student of Mary McCormic. Jody has been soloist with the a capella choir, soloist with the college Grand Chorus, has held leading roles in Opera Workshop productions, and is a member of the Madrigal Singers. She is a member of Kappa Delta Sorority and is representing Phi Tau Chapter of Mu Phi Epsilon as a music delegate. Upon graduation from NTSC, Jody plans to continue her vocal studies in New York.

MARY ELLEN NEWPORT, music delegate from Phi Xi of Baylor University, is from Springfield, Mo. Her music major is in voice and academic major is in English.

BETTY MONETTE, 20-year-old contralto, was born and raised in Jackson, Miss., where she is a senior voice major at Belhaven College. During high school, she sang Lady Jane in *Patience*, the Duchess in *The Gondoliers*, alto solos in a city-wide *Messiah*, in the choruses of *Carmen* and *La Traviata*, was a Thespian, and won two National Scholastic Art Keys. At Belhaven, Betty is active in Mu Phi Epsilon, the Sextette, Chorale, "B" Club, Kappa Delta Epsilon, and was junior annual editor and class favorite. She made her debut with The Jackson Opera Guild in 1952, as Martha in

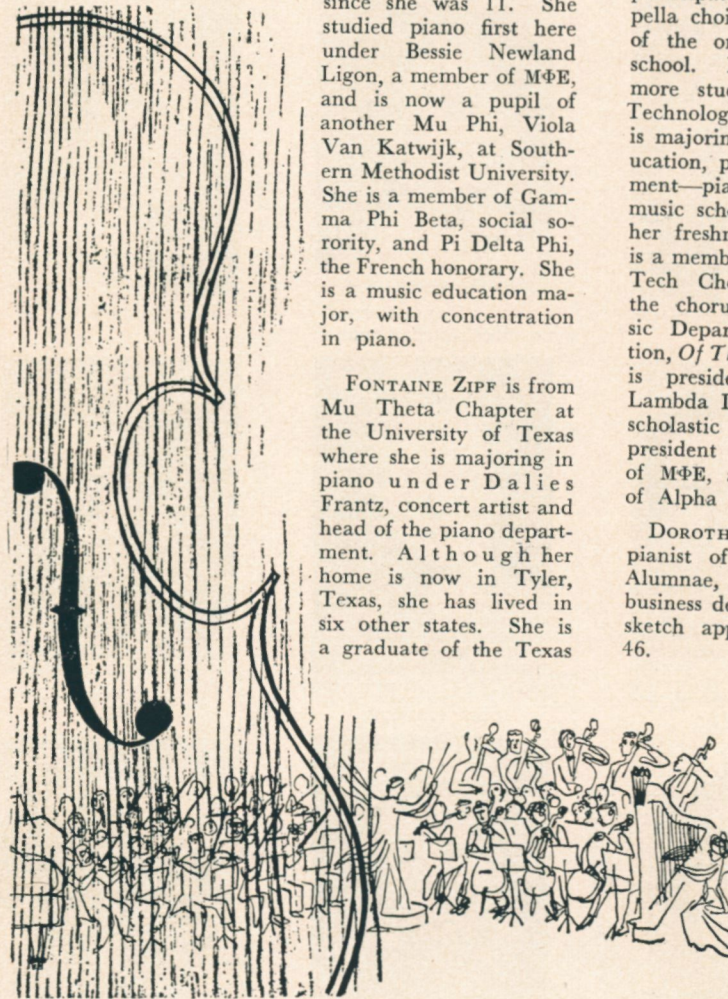
*Faust*, and sang Suzuki in *Madame Butterfly* this season.

AFTON KUNZ, many times scholarship winner, is the president of Epsilon Mu. In her last three years of high school she held student body offices and was very active in music circles. She received a music scholarship to attend her first year at Weber College and in that year she was soloist with the Weber College Orchestra in the Grieg *Piano Concerto in A Minor*. For her second year at Weber she received a scholarship from the Chi Omega sorority and was elected "Friendliest Girl on Campus." Afton was given a scholarship to attend the following year at the University of Utah and became a member of MΦE at the end of her junior year. For the past three years she has been accompanist for the Ogden Symphonic Choir and has accompanied such artists as Rafael Mendez.

JOYCE SADLER ORR, nee Joyce Irby Sadler, Denver Alumnae, was affiliated with Mu Xi Chapter of Mu Phi Epsilon while studying at the American Conservatory in Chicago. She majored in piano under Henriot Levy and



received both Bachelor and Master of Music Degrees. Joyce manages her own piano studio and has appeared as guest soloist and accompanist on various concert programs. She is active in numerous music organizations as well as serving in an official capacity in the Colorado division of the National Federation of Music Clubs and the Colorado State Music Teachers' Association.



THE MAY 1954 TRIANGLE OF MU PHI EPSILON

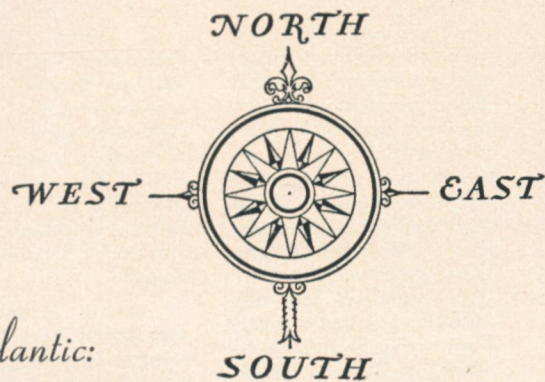
ANN PARKER was born at Texarkana, Ark., just two blocks from the border of Texas, which has been her home for the major portion of her life. She was born into a nomadic family, her father being a railroad official and her mother an art lover. With her parents, Ann has traveled all over this country, to such widely separated areas as California, Florida, Louisiana, and New York. Ann has lived in Dallas since she was 11. She studied piano first here under Bessie Newland Ligon, a member of MΦE, and is now a pupil of another Mu Phi, Viola Van Katwijk, at Southern Methodist University. She is a member of Gamma Phi Beta, social sorority, and Pi Delta Phi, the French honorary. She is a music education major, with concentration in piano.

FONTAINE ZIPF is from Mu Theta Chapter at the University of Texas where she is majoring in piano under Dalies Frantz, concert artist and head of the piano department. Although her home is now in Tyler, Texas, she has lived in six other states. She is a graduate of the Texas

Eastern School of Music and toured Alabama, Mississippi, and Tennessee with the college choir as accompanist and as solo performer. She has studied in Aspen, Colo., with the duo-pianists Vronsky and Babin and after graduation she plans to teach piano in a college.

ANNITA POWERS was graduated from Lubbock Senior High School with high honors in 1952. She participated in the a capella choir and was one of the organists of her school. Now a sophomore student at Texas Technological College, she is majoring in music education, principal instrument—piano. She held a music scholarship during her freshman year. She is a member of the Texas Tech Choir and is in the chorus of the Music Department production, *Of Thee I Sing*. She is president of Alpha Lambda Delta, honorary scholastic sorority, vice president of Epsilon Pi of MΦE, and a member of Alpha Chi Omega.

DOROTHY JENNINGS, pianist of Columbus Alumnae, is music and business delegate and her sketch appears on page 46.



*Atlantic:*



BARBARA LOU EDELMAN, B



GLADYS ROSSDEUTSCHER, Rochester Alumnae



SUE GOLDSMITH, Ψ



MARY LEE FARRAR, EN



HILDA RADEY, Philadelphia Alumnae



SYLVIA BETTS DODD, ΦΓ



ELIZABETH MOON PINKHAM, Boston Alumnae



RUTH L. MORGAN, Washington Alumnae



JESSIE YUILLE YON, Pittsburgh Alumnae



ALCESTIS BISHOP, MT

*Atlantic:*

ALCESTIS BISHOP, violinist, is a junior at the Eastman School of Music. She is from Chicago where she studied music and was the concertmistress of the All-Youth Orchestra in her last year of high school. She has appeared as soloist with the Youth Orchestra and also with the Honors Orchestra of the National Music Camp at Interlochen, Mich., where she spent several summers. At Eastman, Alcestis has been very active in orchestra and quartet work and recently performed the Brahms *Double Concerto* with one of the student orchestras. She is a member of the first violin section of the Rochester Philharmonic Orchestra.

BARBARA LOU EDELMAN, vice president of Beta, was born at Mount Pleasant, N. Y. She is now completing her second year in voice at the New England Conservatory. During high school, "Bobbi" served many times as president, editor, athlete, and soloist. She also won all-state vocal competitions, represented her county at the International Music Festival in Montreal, and sang two years as guest soloist for the Metropolitan Opera Guild concerts. After graduation, she attended Oberlin Conservatory for a year and then transferred to Boston and New England Conservatory. Last spring she toured with the Cecelia Choral Society to Paris. Her fu-

ture plans include a concert career.

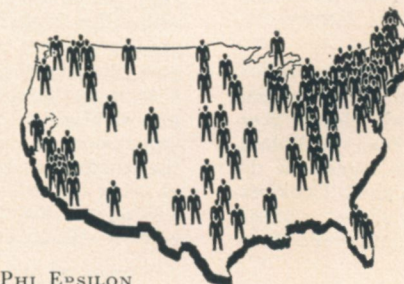
GLADYS ROSSDEUTSCHER was born in Buffalo, N. Y., and received her elementary and high school education there. She won the Jesse Ketchum silver and gold medals for scholarship in seventh and eight grades and on graduation from high school. At that time she also received the Chromatic Club award given to the high school student outstanding in the field of music. She attended University of Buffalo and then entered the Eastman School of Music, majoring in piano pedagogy. She received the MΦE Award and the George Eastman honorary scholarship. At present she is a member of the preparatory department piano faculty at Eastman School and serves as music editor for the magazine, *Highlights for Children*. She was affiliated with Mu Upsilon and is now with Rochester Alumnae.

SUE GOLDSMITH is a junior in music education at Bucknell University with piano as her major instrument. She was elected to Mu Phi Epsilon in her freshman year and since then has served as warden, magazine chairman, and program chairman. In high

school she was a member of various choral organizations and had the thrill of writing her class song in her senior year. Sue's other college activities include membership in the chapel choir, mixed chorus, and band, in which latter organization she plays french horn. She is also secretary of the Women's Glee Club, has served on the Artist Course Committee for two years, is training the chorus for the annual operetta, and at present is serving as president of the local MENC chapter.

MARY LEE FARRAR, Epsilon Nu, is now President of her chapter at West Virginia University. She is a sophomore, majoring in music education with minors in piano and voice. She is vice president of the Presbyterian Student Center and belongs to the YWCA, MENC, and church choir. Her home is in Weirton, W. Va.

HILDA MARIE RADEY, while a student at Combs Conservatory in Philadelphia, studied piano with Ruth Row Clutcher, our national president, and was initiated into Omicron Chapter. After graduation she studied for two summers with Tobias Matthey in London. Before joining the



THE MAY 1954 TRIANGLE OF MU PHI EPSILON

staff of the Philadelphia Orchestra Association, she taught a large piano class and was a church organist. With the Orchestra her activities include coordination of the Orchestra's concerts and activities for students from some 125 high schools and colleges in the Philadelphia area. She also promotes the regular Friday afternoon series among various club groups, and is currently the president of Philadelphia Alumnae Chapter.

SYLVIA BETTS DODD was born in Frederica, Delaware. She later moved to East Orange, New Jersey, and studied piano under Helen M. Lang. While at East Orange High School, she was an honor student, president of the Spanish Club and played for the school orchestra and modern dance group. She next attended George Washington University. In Baltimore she continued study with Alexander Sklarevski and was graduated from the Peabody Conservatory of Music in 1951. She is now engaged in teaching piano classes in several Baltimore County public schools and also has private piano pupils. She was formerly the corresponding secretary and is at present the president of Phi Gamma.

ELIZABETH MOON PINKHAM is Boston Alumnae's newly elected president. Born in Eldora, Iowa, she studied at the New England Conservatory of Music, graduating in music education.

Here she was initiated into Beta Chapter and into the society of Pi Kappa Lambda. At the present time her musical activities consist of private teaching, and participation in church, civic, and fraternal organizations. She has two sons in college—Thomas, a junior in engineering, and Robert, a sophomore in business administration.

RUTH L. MORGAN, now president of Washington Alumnae Chapter, soprano, choral director, and teacher of voice, has had much experience in directing large choruses of employees of various government departments as well as church choirs and small groups of women singers. Her written lyrics have been used by Washington Alumnae composers. She was graduated from George Washington University and joined former Rho Beta Chapter of Mu Phi Epsilon while at the Washington College of Music. Currently she is vice-president of the District of Columbia Professional Panhellenic Association.

JESSIE YUILLE YON began her musical studies at the Glasgow Atheneum in Glasgow, Scotland, majoring in voice with Allen McBeth. She spent two years in Glasgow, studying the second year at the Glasgow College of Music. Being the only American student in the school, she was proud of being the only student passing the Royal Academy of Music examina-

tion with distinction. Returning to spend the summer at home in Pittsburgh, Pa., she went to the Metropolitan College of Music in Cincinnati, Ohio, in the fall, studying voice with Mr. Sterling and piano with Elizabeth Mathias. Jessie was married in 1907 and had two sons and is now the proud grandmother of three grandsons and a granddaughter. After her husband's death she went to Carnegie Institute of Technology to fill the position of Hostess at Carnegie Union. The following year she was made Acting Dean of Women and the next year was appointed to the position of Dean of Women, keeping that post until she retired in 1949. She is an honorary member of Mortar Board, an honorary member of The Cwens, member of the Pennsylvania Board of the Federation of Music Clubs, member of the Tuesday Musical Club Board of Pittsburgh, and is exceedingly proud of being a Charter Member of Mu Phi Epsilon.

ESTHER BIENFANG RICHARDSON, New York Alumnae, is a pianist and teacher. She is a graduate of Lawrence Conservatory and is a charter member of Pi Chapter there. She received her Bachelor of Music from Bush Conservatory, her Master of Music from Chicago Conservatory, and studied privately with Rudolph Ganz in Chicago and Edwin Hughes in New York. She taught piano and theory at Whitman Col-

lege in Walla Walla from 1921 to 1948 and was head of the Music Department from 1935 to 1945; being affiliated with Mu Zeta Chapter. She has concertized in the West with solo performances with the Walla Walla Symphony Orchestra. She was married in 1949 to George F. Richardson and affiliated with New York Alumnae in 1951. She still does solo appearances, accompanies, and plays two-piano concerts with Ruth Bradley.

PAT MCKINNON, a music major at Brenau College from Douglas, Ga., is studying piano with Eliza Holmes Feldman. She is a member of Mu Phi Epsilon, Lorelei Club, State Music Club, Alpha Chi Omega Sorority, and is Chorus Accompanist. Pat was also active in her high school music activities. Some of these activities were music festivals, state and district, literary meets. She was also chorus accompanist.

LILLIAN BRADEN, Miami Alumnae Chapter, was initiated into Mu Phi Epsilon while a student at Lawrence Conservatory of Music, Appleton, Wis. Following graduation she joined the faculty of Lawrence Conservatory and during her eight years of college and teaching there was active in Pi Chapter, having served as president two years of that time. She studied piano and organ at the Cincinnati College of Music and American Conservatory

of Music, Chicago, taught piano classwork in the Chicago Public Schools, and was active in the Chicago Alumnae Club. She was the first Musical Director of Gads Hill Center School of Music, from 1931 to 1933. She served on National Council of Mu Phi Epsilon for five years as Vice-President and Alumnae Advisor. For the past eight years she has been residing in Miami, Fla., where she teaches piano at the Miami Conservatory of Music. In addition to her membership in Miami Alumnae Chapter of Mu Phi Epsilon, which she assisted in organizing, she is a member of Miami Music Club, Miami Music Teachers Association, and Altrusa Club.

## Great Lakes:

CHRISTINE MILES represents Mu Phi Chapter at the National Convention. "Chris" has been a very active member in Mu Phi and this year has served as Courtesy Chairman. A native of Akron, Ohio, she was graduated from Bath High School in 1951. She won a scholarship to Baldwin Wallace College and is now studying for her Bachelor of Music Degree with a piano major and a voice minor. Besides being a member of Mu Phi Epsilon, she also belongs to Alpha Gamma Delta, Delta Phi Kappa, Bach Chorus, and Opera Workshop.

EILENE WALLACE, Britton, S. D., is a member

of Sigma Chapter, Northwestern University. She is a transfer from Mu Tau Chapter at the University of South Dakota, where she was active in choir and orchestra. Upon transferring to Northwestern University she became a member of the Glee Club and was soprano soloist with the Combined Glee Clubs and orchestra ensemble, last year. Currently, she is a member of the Symphony Orchestra. She is also a member of the Music School Student Council and Professional Panhellenic. As a Mu Phi, Eilene has been magazine chairman, vice president, and rush chairman, and is president for the coming year.

ERNESTINE HANKS was born at La Crosse, Wis. Because her father is a minister, she has lived in various places—Wisconsin, Iowa, Mississippi, and Illinois. He is now serving the U. S. Air Force as a chaplain. Ernestine wrote of her early musical life: "We have always had music of some type in the family, beginning with piano lessons. I didn't begin voice lessons until my sophomore year at high school. Then I wasn't too serious about music because nursing was the main objective. But music did play an important part in my secondary school life, including various musical organizations. The decision was made in favor of a degree in music education and now in my junior year, I realize more clearly than ever

the place of music education in the schools. It is my hope and desire to teach music in such a way that the children love it and are not sacrificed for the sake of just good music."

ROSALIE BARRY, president of Mu Xi Chapter, is from Tulsa, Oklahoma. For the past three years she has been living in Chicago where she is studying piano with Rudolph Reuter and is a graduate of the American Conservatory of Music, having received both bachelor's and master's degrees there, the latter in June, 1953. She is teaching piano at the Hull House Music School and at the Ffoulkes School and is an accompanist in the voice studio of Lola Fletcher.

JANE ANN MILLER, a junior in the Music Department at Mount Union College, was born in Morristown, Ohio. She completed her first four years of grade school there with the exception of the latter part of the fourth year which was spent in a part of Pennsylvania. Her home is now in Malvern from which high school she was graduated. Jean Ann has always had a great love for music and be-



gan her piano lessons at the age of six. All through high school she accompanied groups and sang in vocal ensembles although it was not until the summer before coming to college that she had her first voice lessons. At Mount Union College she is studying piano and voice, and plays clarinet in the band and bassoon in the college orchestra. Besides being a member of the Mount Union College Choir, she serves as its secretary and is also secretary of the College Chorale. Her aspiration is to become either a music teacher in this country or a missionary teaching music abroad.

BESS V. CUNNINGHAM, educator, psychologist and writer, is a native of Ohio. She holds degrees from University of Toledo and Ohio State University and has her Ph.D. degree from Columbia University. She was initiated into Mu Phi Epsilon in 1910 and studied piano at Toledo Conservatory of Music. She also holds membership in Delta Kappa Gamma, Kappa Delta Pi, Phi Kappa Phi, educational and scholastic sororities, and Alpha Chi Omega. Dr. Cunningham has taught in the public schools in Toledo; state teachers colleges in San Francisco, Calif., and Greeley, Colo., Teachers College at Columbia University, and the University of Toledo. Textbooks which she has had published include *Family Behavior*, *Psychology for Nurses*, *Pintner-*

*Cunningham Primary Test* (in collaboration) and she has had numerous articles in psychological journals.

GRACE L. SEIBERLING, president of Chicago Alumnae Chapter, and past president of Iota Alpha, is one of Chicago's most active musicians. As pianist and teacher she is constantly in demand, and she is also vice president and program chairman of the Evanston MacDowell Society of Allied Arts. Grace studied piano with Phillippe, Ampara Iturbi, and Cortot in Paris, and with Alexander Raab in Chicago. She was the Diamond Jubilee president of the Musicians' Club of Women, and is a member of the Lake View Musical Society, Cordon Club, North Shore Musicians' Club, and the Little Music Club of Evanston. The Evanston Civic Symphony, the North Shore Community Concerts, and many other organizations have profited by her energetic promotion, her enthusiasm, her charming personality and her loyalty to a cause.

HELEN MCKIE RAMAGE, Detroit Alumnae, is a native of Edinburgh, Scotland. While secretary of a political organization, she studied piano with Charles Beswick, voice with Mrs. Scott-Riddell, and sang with the Bach Choir. She arrived in the U.S.A. in 1926 and after her marriage resumed her business career, piano and voice training. She was

## Great Lakes:



CHRISTINE MILES, MΦ



ERNESTINE HANKS, EΞ



BESS V. CUNNINGHAM,  
Toledo Alumnae



OPAL MOORE, Evan-  
ston-North Shore



EILEEN WALLACE, Σ



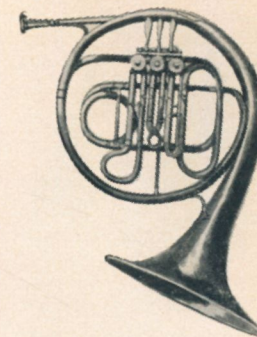
ROSALIE BARRY, MΞ



GRACE L. SEIBERLING,  
Chicago Alumnae



FRANCES KOMA KEL-  
LEY, Cleveland Alumnae



JANE ANN MILLER, Φ



HELEN MCKIE RAMAGE,  
Detroit Alumnae

## East Central:



ANN DELANEY, T



ROSEMARY DYSART, ΦΘ



GAY ENGLISH, ET



MARION ERGANIAN  
IZMIRLIAN, St. Louis  
County Alumnae



THELMA KLETT, Cin-  
cinnati Alumnae



JANITA REIDEL, MΠ



DORIS MCCALL, ΦΦ



PAULINE HOUTS, Kan-  
sas City Alumnae



VIRGINIA RICHARDSON,  
EO



MARLENE RAMM, EK



KATHLEEN MAIN SWEET-  
NEY, Evansville Alumnae



CAROLINE ANN WHITE,  
Z



GEORGIANNA TINCHER,  
Indianapolis Alumnae

graduated from the De-  
troit Conservatory of  
Music where she studied  
piano with Elizabeth  
Johnston, theoretical sub-  
jects with Dr. Wilhelm  
Middleschulte, and be-  
came affiliated with Del-  
ta Chapter. She teaches  
piano and directed the  
Fitzgerald Mother-sing-  
ers for many years, sang  
with the Madrigal Club  
under Charles Frederic  
Morse and August Mae-  
kelberghe and in the  
choir of the Woodward  
Avenue Presbyterian  
Church. She now sings  
with the Tuesday Musi-  
cale Chorus directed by  
Marion Jewell, is Na-  
tional Magazine Chair-  
man and president of  
Detroit Alumnae Chap-  
ter.

OPAL MOORE, Evan-  
ston-North Shore Alum-  
nae, was born near Arm-  
strong, Mo. She began  
the study of piano at the  
age of eight and after  
high school graduation  
went to Stephens Col-  
lege at Columbia, Mo.,  
where she studied piano  
with Ruth Goodsmith (a  
Mu Phi) and Basil D.  
Gauntlett. She continued  
her education, with a  
major in piano and  
minor in theory, at  
Northwestern University  
where she studied with  
Charles J. Haake. She  
was initiated into Sigma  
Chapter and received her  
Bachelor of Music De-  
gree from Northwestern  
and later, Master of  
Music from the American  
Conservatory of Music.  
She has taught piano and  
theory at Cottey College,  
Nevada, Mo., and at  
Missouri Valley College,  
Marshall, Mo. In the  
summer of 1936 she

came to Chicago to study  
piano with Edward Col-  
lins. Since the fall of  
that year she has been in-  
structor in piano and  
theory at North Park  
College in Chicago. She  
was affiliated with Mu  
Xi at the American Con-  
servatory for several  
years and is now with  
the Evanston-North  
Shore Alumnae.

FRANCES KOMA KEL-  
LEY, chapter president,  
is not only a native  
Cleveland but has re-  
ceived all of her training  
in Cleveland, having  
been awarded a piano  
scholarship at Cleveland  
Institute of Music and  
the Ranney Fellowship at  
Western Reserve Univer-  
sity, where she earned  
her master's degree in  
Music. She studied voice  
under Lila Robeson, pi-  
ano with Dorothy Price,  
and theory and history  
with Arthur Loesser,  
Herbert Elwell, Ward  
Lewis, and Arthur Shep-  
herd. Her musical ac-  
tivities have included  
teaching in the Cleveland  
schools and Fenn College,  
church organist, radio  
and TV appearances,  
and adult music appreci-  
ation classes. She is in  
wide demand in north-  
ern Ohio for her "Opera  
Pre-Vues." She serves  
on the Symphony Music  
Appreciation Committee,  
Membership Committee  
of the Three Arts Club  
of Lakewood, and also  
belongs to the Lakewood  
College Club and the  
Junior Board of the  
Lakewood Hospital.  
Frances shares many  
sports with her physician  
husband and two sons,  
Jimmie, aged 12, trum-  
pet player and baseball

star in the Rosky River  
Little League, and Tom-  
my, aged 8, who studies  
piano and dancing and  
is dubbed by his family  
as "The Little Ham."

JOANNE HANSON is the  
new President of Epsilon  
Lambda. She has been a  
faithful member for two  
years, and during the  
past year she was Vice-  
President. Joanne went  
to National Music Camp,  
at Interlochen, Michigan,  
and last July 18, partici-  
pated in the Mu Phi Ep-  
silon dedication of the  
Memorial Scholarship  
Lodge, by performing  
Debussy's "Reflets dans  
l'eau," on the piano on  
one of the programs  
given at that memorable  
occasion.

### East Central:

ANN DELANEY, newly  
elected president of Up-  
silon Chapter at the Cin-  
cinnati Conservatory of  
Music, is from Montours-  
ville, Pa. She will re-  
ceive her Bachelor of  
Music Degree in June,  
and plans to work on her  
master's degree next year.  
A piano major, she has  
studied with Robert  
Gold sand and Ilona  
Voorm since coming to  
the Conservatory. She  
minors in organ. During  
high school, Ann played  
cello in the Williamsport  
Civic Symphony and she  
taught piano besides ap-  
pearing on the radio, and  
in recitals as piano solo-  
ist. Also in high school,  
she was elected to the  
National Honor Society.  
At the Conservatory, Ann  
has played on television,  
in solo recitals, group  
recitals, and has done  
duo piano work. She is

vice president of the senior class, and a member of Student Senate. She was Upsilon's corresponding secretary for two years.

ROSEMARY DYSART, President of Phi Theta, is not only an active Mu Phi but also very active on campus. Better known on campus as "Ronni," she is a junior at Lindenwood College and is majoring in music education with an emphasis on voice. She has held the office of Secretary in Phi Theta in addition to the Presidency and has represented it on the annual Vesper concert and Founders' Day Tea. Last fall Ronni presided over the Golden Anniversary regional conference held on campus. Ronni has been a member of the choir, Chorales, and the girls' trio, has been a soloist in the Christmas and Spring concerts, appeared in recitals and appeared in her diploma recital in April. She has entertained at various college functions, has sung on television several times and is a finalist in the Miss Missouri contest, which is emphasizing talent this year. Ronni has been on the Dean's Honor Roll each semester, received the President's Scholarship two successive years, appeared in the freshman beauty court and also the all-school May beauty court. She has been on the Freshman Council, president of the sophomore class, treasurer of the all-campus Student Christian Association, and entertainment chairman for the Athletic Association.

JANITA RIEDEL began her study of music at Old Fort School, Old Fort, Ohio, where she was an active member of the glee club and orchestra, played in various ensembles and did some solo work. Each week she traveled to Findlay where she took private violin lessons. Here she made a contact which opened to her the opportunity of playing violin in the Findlay Civic Symphony Orchestra for two years before entering college at Ohio Wesleyan University, Delaware, Ohio. Here her main interest as a beginner in the field of music education is one of promoting the study of strings in the public schools. She is now working with a beginning string class in Delaware, Ohio. A violin major, she plays in a string ensemble and in the college orchestra of which she is librarian. Janita accompanied the Ohio Wesleyan University Glee Club as violin soloist on the annual concert tour this spring. She has held the office of treasurer and is now president of Mu Phi Chapter.

MARLENE RAMM is in her junior year at Southern Illinois University and has been a member of MΦE for three years. During her sophomore year she served as treasurer, has just finished a term as president of the local chapter of Mu Phi, and has recently been elected alumnae secretary for the coming year. She was a vocal entry in the Chicagoland Music Festival before attending



college. Marlene is a member of the university touring choir, the madrigal singers, and is accompanist for the a cappella choir. She plays in the university marching and varsity bands and the orchestra. Her major is in music education with concentration in piano, and she has a class of private piano pupils.

GAY ENGLISH, newly elected president of the Epsilon Tau Chapter at Washington University, St. Louis, is a senior in the College of Liberal Arts, majoring in music, and an active member of the Washington University Opera Theater there. Early this season, Gay appeared as soprano soloist with the St. Louis Symphony Orchestra. Other St. Louis appearances have included numerous television performances with the Laclede Little Symphony, leading roles in St. Louis Little Symphony programs, and productions of the St. Louis Grand Opera Guild, St. Louis Light Opera Guild and the outdoor summer Municipal Opera. Early in her professional career Gay appeared in four Broadway musicals. Other professional work, which takes her to various parts of the country, has recently included concert appearances in Little Rock, Ark., and Davenport, Ia.



DORIS MCCALL, a scholarship student for the past four years at the University of Kansas City, was elected president of Phi Phi Chapter, having previously served a year as Recording Secretary, and another, as Treasurer. She is a senior at the University where her music studies include piano and organ, and where she has appeared on Phi Phi music programs, and has sung in choral concerts sponsored by the various music groups on the campus. Her other student activities include membership in the Student Christian Club; secretary-treasurer of the Order of Torch and Scroll; scholastic honor society; and vice president of the Professional Panhellenic Association. Doris is an excellent student, unassuming, cheerful and dependable. She is a diligent worker in anything she undertakes to do, and has never missed a chapter meeting, which are held bi-weekly.

KATHLEEN MAIN SWEENEY (Mrs. William) was initiated into Mu Phi Epsilon, Zeta Chapter, November, 1947. A year later she served as its President. A music major at De Pauw University, she taught a year in East Chicago schools after graduation, and after her marriage she came to Evansville where she teaches music in schools of

Perry Township and plays violin in the Evansville Philharmonic Orchestra. She served as President of the Evansville Club in 1952-53 when the group attained chapter status. She is a member of Pi Kappa Lambda.

MARIAN ERGANIAN IZMIRLIAN began studying in St. Louis with Miss Marjorie Broesel and Leo C. Miller. She studied at Juilliard School of Music and received two year scholarships each to Christian College, Columbia, Mo., and Northwestern University, Evanston, Ill. At Northwestern she received her degree of Bachelor of Music and received the Young Artist's Contest sponsored by the Women's Association of the St. Louis Symphony, was elected to Pi Kappa Lambda, honorary music fraternity, and appeared as soloist with the Northwestern Symphony Orchestra.

PAULINE KEMPE HOUTS holds a BM Degree from the Kansas City Conservatory of Music where she became affiliated with Mu Delta Chapter of MΦE. She was a piano major and her teachers included Dr. John Thompson, Daniel Ericourt, and Dr. Victor Labunski. She has appeared on the Alumnae Chapter's successful Mu Phi Morning Musicale Series. Besides

being president of the Alumnae Chapter, she is a member of the Kansas City Musical Club, Musical Art Club, PEO, director of the Junior Choir at the Ward Parkway Presbyterian Church and is the mother of two boys.

CAROLINE WHITE was encouraged in the musical field because her parents had an active interest in music. She started piano lessons in the first grade, and in the seventh grade started playing the trumpet. She was quite active in high school in both musical groups and other activities, and was editor of the yearbook and played first chair trumpet in the band. In her senior year she decided to take up music education in college, and chose DePauw after coming in contact with several of the faculty members at the National Music Camp, Interlochen, Mich. She is now in her sophomore year and is eager to get into the field of teaching. She is a member of the band and orchestra at DePauw and is also active in Canterbury Club, the Episcopalian student group on campus.

THELMA KLETT is a graduate of University of Cincinnati and Cincinnati Conservatory of Music. She holds degrees from these institutions in voice, piano, and public school music. Thelma teaches vocal music in Cincinnati schools and is director of a 74-voiced children's choir in Hyde Park Community Church, Cincinnati. She works



especially with children's choirs in the schools and has assisted with the large children's choruses for the Cincinnati May Festival. In addition to her membership in MΦE, she is also a member of Alpha Chi Omega and Delta Kappa Gamma, national honor fraternity in education. At present she is chairman of the Sunday group of Mu Phi Alumnae in Cincinnati.

VIRGINIA RICHARDSON, Epsilon Omicron, is majoring in church music and music education at Indiana University. She has studied piano for 12 years and played trumpet for seven years, winning many honors in contests. A scholarship student in college, she has played in several student organ recitals and has given a solo recital, studying with Harry Gay and Oswald Ragatz.

GEORGIANA ROCKWELL TINCHER, president of Indianapolis Alumnae, was initiated into Kappa Chapter, and has been a member of the Cleveland Alumnae, Kansas City Alumnae Chapters, and was president of the latter. Before her marriage she taught piano at the Arthur Jordan College of Music in Indianapolis. Georgiana is state treasurer of the Indiana Federation of Music Clubs, a member of Alpha Chi Omega, and the Indianapolis Matinee Musicale. She has one daughter, Elizabeth June.

DOROTHY BORSCHEL JENNINGS, Marion, Ohio, has enjoyed a happy and varied musical life, serving the cause of music as

piano soloist, accompanist, teacher, and as a member of musical, cultural, and civic organizations. Following her graduation from Eastman School of Music, Rochester, N. Y., where she earned both bachelor and master degrees, she taught at two private schools in Philadelphia, and then became head of the Music Department at Huntington College in Indiana. Recently Dorothy became a life member of the Ohio Federation of Music Clubs. She is second vice president of the Lecture-recital Club, a member of MAUW, Quest Club, Columbus Chapter of MΦE, and accompanist for the Marion Civic Chorus. A devoted wife and mother of two small children, Dorothy is also an ardent worker in the First Presbyterian Church.

MARIE BURKE, pianist, organist, and president of the St. Louis Alumnae Chapter, received her Bachelor of Music Degree from Illinois Wesleyan University and also completed the post-graduate course at Kroeger School of Music of St. Louis. At present she is organist at St. Cronan's Church, a member of the faculty of Kroeger School and choral director of the Jewish Hospital Nurses' Chorus. She is past president of the Piano Teachers' Round Table and of Theta Chapter of Mu Phi Epsilon (now St. Louis County Alumnae Chapter).

WILLENA BOURQUEIN is from Harrison, Ohio,

where she has always participated in the community, church, and school affairs. She has been studying music for 13 years and at college she is a piano major and an organ minor. While in high school she played trumpet in the school band, sang in vocal ensembles, was band librarian in her junior year, its president as a senior. In 1951 she was sent to Buckeye Girls State where she was elected mayor of a city. She also helped promote the music activities there. This year she was a representative to the Panhellenic Association and was photographer for the College Annual. Though only a sophomore, Willena has already contributed much to MΦE at Cincinnati College of Music.

CONSTANCE JACKSON, Gamma, a junior at the U. of Michigan School of Music, hails from Miami Beach, Fla. She has been studying piano since the age of 10 and her "high school summers" were spent at the Florida State University Music Camp, Tallahassee. She is affiliated with Sigma Delta Tau and is a member of Wyvern, junior women's honorary.

### North Central:

JOAN SWANSON, president of Phi Rho, was born in Omaha, Neb. She participated in a capella choir and operetta in high school and voice class, but did not begin taking private voice lessons until in her junior year in high school when she began



CONSTANCE JACKSON, Γ



DOROTHY B. JENNINGS, Columbus Alumnae



MARIE BURKE, St. Louis Alumnae

### North Central:



JOAN SWANSON, ΦΡ



INTA GAIDE, ΦΙ



ADELAIDE PORTS SPURGIN, Lincoln Alumnae



MARY ANN DELONG, MT



JANET AUGUSTINE, MA



FLORENCE REIMUMTH, Minneapolis Alumnae



MIRIAM BIERBAUM, Ω



JOYCE HANSEN, ME

studying voice and piano with Mrs. Henry Hoyer at the Omaha City Mission. There she participated in an organization known as The Omaha City Mission Choir and Players which has received some renown in Omaha, as the group performed for many clubs and organizations. In high school Joan was a member of the girls' quartet which sang in a workshop at Omaha University, with Ralph Williams as judge. During her senior year in high school she also sang with her church senior choir. Under Mrs. Hoyer, she also studied some dramatics and harmony and teaches at the Omaha City Mission during summer vacations. Joan began her studies at Minneapolis College of Music in September, 1952, and joined Phi Rho Chapter in 1953. She has made these comments: "... I feel it a great honor to belong to such a fine sorority. . . . Since I have received my training at a community school, it is good to be able to belong to an organization which, among other things, provides many such opportunities for other aspiring young musicians."

INTA GAIDE, Phi Iota, was born in Riga, Latvia (capital city of Latvia and about the size of Minneapolis and St. Paul), where her father was superintendent of schools. Inta began piano at the age of six but after one year she had to give it up because the war came and their piano was taken by the

army. She and her family left Latvia when she was 10 (1944) and went to Germany where they lived for six years in DP camps. Latvian schools were organized in these camps and she finished grade school there but she had to go through the eighth grade again because she was too young to be accepted into high school. In May, 1950, she and her family came to the United States by boat and traveled by train from New York to Williston, N. Dak., where her parents found work and she and her younger brother entered high school. In Williston, Inta began taking piano lessons and became very much interested in music. She went to Concordia College upon being offered a special foreign student scholarship and is now a junior, majoring in music. She studies piano with Roy Stahl and has received two MΦE scholarships and the Agnes Jardine Scholarship. She became a member of ΦI at the end of her freshman year and has held the office of Corresponding Secretary and is now President. She is also president of the Girls' Choir at Concordia and plans to teach music in public schools after graduation and hopes to go on to further study. Inta tells us that she has found it quite easy to adapt to American ways and that some of her most thrilling moments are those spent in Mu Phi. She says: "In Mu Phi I've found many friends, and we all have

in common that one wonderful thing—music, 'which knows no barrier, and speaks from heart to heart.'"

ADELAIDE PORTS SPURGIN is president of Lincoln Alumnae Chapter, Minister of Music at First Methodist Church, soprano soloist in concert and radio, a participant in local professional groups: Morning Musical Review, Musical Art, American Guild of Organists and Lincoln Music Teachers Association, active in PEO (Chapter DK) and OES. She received her undergraduate degree from Cornell of Iowa and her MME degree from Drake University where she was initiated into Omega Chapter. Adelaide was head of the voice department at Doane College the latter part of World War II when her husband (LCDR) was on foreign duty. She has two children, Victoria and Barry. Her home has been in Lincoln since 1947.

MARY ANN DELONG, Mu Tau, of Brookings, S. D., is a music education major in her sophomore year at the University of South Dakota. She has been studying both piano and viola for several years. She was active in music contests and other extra-curricular activities in high school. At the University she is president of Alpha Lambda Delta, a member of Guidon and of the University choir, an officer of her dormitory, and plays the viola in the University orches-

tra. She is very active in the Methodist Church, sings in the choir, and is editor of the *Wesley Reporter*. She held the office of vice-president of Mu Tau of MΦE before becoming President of Mu Tau this semester.

JANET AUGUSTINE, president of Mu Alpha, is a sophomore in the music education department of Simpson College at Indianola, Iowa. Her home is near Creston, Iowa, and she attended high school in Orient, Ia., and was very active in the music department, winning the music award medal at her graduation. As the daughter of a music teacher who also attended Simpson College and was a member of Mu Phi Epsilon, she has been interested in music since a very early age. Besides her work in Mu Phi Epsilon, she is a member of Alpha Chi Omega, social sorority, Women's Recreation Association, and YWCA.

FLORENCE REINMUTH, president of Minneapolis Alumnae, has originated and designed the MELODIO GAME SYSTEM OF MUSIC FUNDAMENTALS which she has made into a method for teaching small children. She is now offering normal courses for teachers in the method. She studied science, literature, and arts at Carleton College, and piano and harmony with Frederick Locke Lawrence. She holds a teachers certificate from Northwestern Conservatory and a Bachelor of Music Degree from MacPhail School of Music.

She studied creative writing at University of Minnesota and is now teaching at the MacPhail School of Music. Florence edited *Mu Phi Mews*, humor publication, for two Minneapolis conventions of Mu Phi Epsilon, and is a member of Minneapolis Writers' Workshop. She has played with her stringed-orchestra in three national parks: Yellowstone, Glacier, and Jasper. Other engagements with the stringed-orchestra include an annual appearance at the Minnesota State Fair in the Women's Activities Building. Florence also owned and operated an entertainment bureau for 15 years, supplying the Northwest with talent programs for state, national, and international gatherings. Hobbies include fishing and traveling, and one of her longer and unusual trips recently was to Alaska.

MIRIAM BIERBAUM is the daughter of Mr. and Mrs. Roy Bierbaum of Griswold, Iowa. She attended Griswold High School and participated in the following: choir, glee club, band, saxophone quartet, trio, sextet, madrigal, accompanying, Annual editor, reporter, class officer, student conductor, band president, class valedictorian, and winner of the National Arion Music Award. Miriam is a sophomore at Drake University, majoring in piano. She is a member of the University Chorus, Concert Band, saxophone quartet, Alpha Lambda Delta, one of the three

winners of the Des Moines Alumnae Chapter's 1953-54 special awards, and president of Omega Chapter of Mu Phi Epsilon.

JOYCE HANSEN was graduated from MacPhail School of Music with a Bachelor of Music Degree and is studying post-graduate work at the University of Minnesota and MacPhail. During her undergraduate work at MacPhail Joyce was awarded the MΦE scholarship pin award for the highest ranking freshman of her class, the \$100 Mu Epsilon Chapter award and the \$100 Mu Phi Epsilon Alumnae Chapter scholarships in her sophomore and junior years, respectively. She has studied with Avismeri MacGaffey, Elizabeth Greibenow, Bertha Marron King, and Edna Lund, all Mu Phis, and at present is studying with Vera Narrengang, chapter faculty advisor. Joyce is now on the piano faculty of the MacPhail School.

EVELYN ZIRBEL GALLAGHER received a bachelor's degree in music education from Drake University in 1936 where she studied piano with the late Gertrude Hutton Nourse. Following two years of teaching public school music, she returned to Drake as secretary to the dean of the Fine Arts College. During the war she served as an army hostess at Camp Dodge, Ia., and Jefferson Barracks, Mo. She is president of the Des Moines Alumnae Chapter of Mu Phi Epsi-

## South Central:



EVELYN ZIRBEL GALLAGHER, Des Moines



BILLIE CROFT, MT



EILEEN STEENSON, Dallas Alumnae



REBECCA BREINING, ΦT



JOYCE MILLER, EΠ



BARBARA BAKER, MX



SYLVIA JENWYL COLEMAN, EZ



MARTHA STEWART, EE



MARY NEITA JOHNSON, Fort Worth Alumnae



JOAN DODSON, ΦΠ



HELEN DRUKE, EM



lon, a member of Fort-nightly Musical Club and PEO, and the mother of two children, Tim and Melinda.

BILLIE CROFT, Mu Gamma, is a sophomore in the teachers college of University of Nebraska, and has a percussion major and piano minor in the music school. She is percussionist with the Lincoln Symphony, U of Nebraska Orchestra, first chair drummer, and only woman officer in the University of Nebraska ROTC Concert Band. Billie has her own dance band trio called the "Billie Croft Trio" with which aggregation she plays drums. She is student conductor and librarian with the U of Nebraska chorus, a board member of the University Branch of the Red Cross, board member of U of Nebraska Student Union Activities, and is panhellenic officer for Pi Beta Phi. She taught the percussion ensemble at the three weeks' music course for high school students called "all state" and last year was awarded the \$40 Fine Arts Scholarship based on interest and musicianship. This winter she was awarded the \$50 Mu Phi Scholarship given by Lincoln Alumnae.

## South Central:

EILEEN STEENSON is a graduate of Columbia University where she majored in French and received a master's degree. In New York she studied with Josef and Rosina Lhevinne, and in Fontainebleau, France, at

the American Division of the Paris Conservatory with Robert and Gaby Casadesus. Eileen served one year in the Concert Division of the USO, touring Army and Navy bases and hospitals in North Africa as well as the United States. One year she held the position of instructor in French at Columbia University. Since September, 1952, she has been a member of the faculty of the School of Music at Southern Methodist University.

REBECCA (BECKY) BREINING was born in Pampa, Texas. Her parents are Mr. and Mrs. W. C. Breining, of Lefors, Texas. It was in Lefors where Becky attended school for the first 12 years, graduating as valedictorian of her class. In high school Becky was active in Future Homemakers of America; was a member of the Annual staff; and during her senior year edited the school newspaper, was elected District President of the Methodist Youth Fellowship, and received the all-school Citizenship Award. Becky is now a junior at North Texas State College, Denton, where she is a music education major. She is President of Phi Tau Chapter and represents that chapter as business delegate. She is corresponding secretary of Kappa Delta Sorority, and is a member of a cappella choir, MENC, and Alpha Chi, national honorary society.

JOYCE MILLER was graduated from Friona

High School, Texas, as valedictorian of the 1952 class. She was a member of band and choir throughout high school and received the school music award twice during that time. She is now a sophomore at Texas Tech. She sings in the Tech Choir, Tech Madrigal Singers, and a girls' barbershop quartet, the Harmodears. She is in the chorus of the Music Department production *Of Thee I Sing*. She is a member of Alpha Lambda Delta, scholastic sorority.

BARBARA (BEE) BAKER, president of Mu Chi, was born in Kalamazoo, Mich., and lived in Milwaukee, Wis., until college career at Southern Methodist University. She began her musical training on the piano and in the fifth grade began the study of clarinet and in a year played first clarinet in the "all-school orchestra." At the end of the sixth grade, she switched to violin and from then on, changed instruments as often as one was needed in the orchestra, playing violin, cello, flute, and string bass in grade school. Barbara played flute, viola, oboe, violin in high school and accompanied the high school choir. At SMU she is majoring in music education with violin concentration, studying under Philip Williams.



SYLVIA JENWYL COLEMAN is from Malvern, Ark. A junior in Hendrix College, Conway, Ark., she majors in piano, minors in organ. Her other instrumental interests include violin in the Hendrix string ensemble, and bass clarinet in the concert band. Her original compositions have appeared on student programs for two years. She has arranged music for the college's annual minstrel show, and does accompaniment work for recitals and student productions. This year she designed stage sets for *The Marriage of Figaro*, sponsored by Mu Phi Epsilon and Phi Mu Alpha. Sylvia is vice president of Epsilon Zeta Chapter.

MARTHA STEWART, Epsilon Epsilon, is a junior at Texas Christian University and president of her chapter. She is majoring in music education and minoring in piano. Her preparatory piano study was done with Louise Turbeville at Arlington State College in her home town of Arlington, Texas. After graduating as valedictorian of her senior class, she entered TCU and is studying piano with Lilita McCorkle. She has performed for the past two years on the piano program of the TCU Annual Fine Arts Festival. While serving as a student accompanist, she is doing preparatory piano teaching. Other activities include: president of the student chapter of Music Educators National Conference, secretary

of the Fine Arts Council, Alpha Chi, the university chorus, the TCU Symphony Orchestra, as well as Mu Phi Epsilon. At present she is pianist for Westcliff Methodist Church, Fort Worth.

MARY NEITA JOHNSON, Fort Worth Alumnae, was graduated from Texas Christian University in 1952 with a Music Education Degree and minor in cello. She spent all four college years in Epsilon Epsilon Chapter, two of them as vice president and president. Her teaching has been in public school elementary music in Houston, Texas, and now in Fort Worth. Her mother, Vivian Harder Johnson, was a charter member of the Fort Worth Alumnae Chapter.

JOAN ELIZABETH DODSON, a piano major in the School of Fine Arts, at Texas Tech is working for her Bachelor's Degree and hopes someday to receive a Master of Music Degree also. Her musical activities have always been of vital interest to her and her background has been composed of the study of piano, organ, and violin. At present she is studying piano with Dr. Terwieger and organ with Wallace Dunn, both of the music faculty. She was initiated into Phi Pi in her sophomore year and has served in various offices on campus groups and is assistant secretary and alumnae secretary of Phi Pi. During her sophomore year Joan received the Preser Foundation Award, the recipient of which is chosen by the music faculty.

HELEN DRUKE is a junior enrolled in the College of Education at University of Utah, with a major of a teaching composite in music. She began the study of piano at the age of five with Fidelia Duncan in Phoenix, Ariz., and continued her studies with her aunt and uncle, Helene Druke and Walter Shaw. She now studies piano with Dr. Helen Kolland. Helen's home is in Phoenix, Ariz., and she headed northward to college because she is a Latter-Day Saint and because of relatives in Salt Lake City. Helen writes: "I enrolled in the College of Chemistry upon entering college because I thought I would just look terrific in a lab apron and behind dozens of test tubes. I just didn't fit the role, so I switched to music education and am now well into my major field which I love."

MILLICENT AKIN (Mrs. Don H.) was graduated from Oklahoma College for Women with the degree of Bachelor of Music Education and a diploma in voice, was instructor of music in the public schools of Oklahoma City, serving as head of the vocal department at Taft Junior High School. She studied voice with Hilda Butler and piano with Lois Bennett of Oklahoma College for



Women, studied with Ellen Carrier Hart and Samuel G. Hart of Oklahoma City. She has been heard over the state as well as in Pinehurst, N. C., and Louisville, Ky., singing soprano solos in performances of the major oratorios. Millicent served as vice president of the Oklahoma City Alumnae Chapter of MΦE; is soloist at St. Paul's Cathedral, Oklahoma City. She is a member of Chapter DF, PEO, Ladies' Music Club, Solo Division, and MacDowell Club.

BETTY LOU GUENTHER is a junior at University of Denver, having transferred in 1952 from Colorado College. She is majoring in voice and minoring in elementary education, planning to teach upon graduation in 1955. Betty Lou has recently been elected to the Presidency of Mu Rho and is also a member and secretary of Lamont Singers, a semi-professional Choral Group. Her first love is music but being a native Coloradoan, she also loves winter and summer sports. Skiing, swimming, fishing, hunting, and horseback riding rate high on her list of activities.

BOBBY McCRANEY is the business delegate of Phi Xi from Baylor University. She comes from Tyler, Texas. Her major is in organ and she is minoring in piano.

VIRGINIA PORTER FISER, Wichita Alumnae, has held the offices of music in hospitals chairman, corresponding secretary, treasurer, vice-president and program chairman, is at present acting president, and will be president for 1954-55. She is chairman of the six Kansas chapters for Convention arrangements, and will preside at the final banquet. The various awards she has received include at Kansas University the Innes Award, Luella F. Stewart Award, Miller Hall Scholarship, and Elizabeth Watkins Scholarship. She was valedictorian of her senior class in Cherryvale, Kan., has won several awards as a flutist, and previously directed a teen-age girls' choir. In Wichita her other activities include MΦE representative to the Community Arts Council, Saturday Afternoon Musical Club treasurer for 1954-56, Wichita Garden Club where she has won numerous prizes in floral arranging, Cub Scout Den Mother, and Wichita Symphony Orchestra membership drive assistant. Her CPA husband is a member of Phi Mu Alpha. They have two sons, Frederick and Kurt.

LOIS WENTWORTH JACKSON spent girlhood in State Center, Iowa. She attended Tabor College, studying music, and received a B.A. Degree. She then taught English and piano at Bacone College, Muskogee, Okla. She studied summers in a master class, returned

to Iowa and attended Drake University where she received her B.M. Degree and majored in piano, teaching part time. Here she became a member of Omega Chapter, Mu Phi Epsilon. She married P. E. Jackson, moved to Ames, Iowa, where they reared their family. Having been active in music from an early age, she continued after marriage to perform and teach, played in several churches, and helped in local and state music contests many years. The Jacksons have three children: a son studying for the ministry, two daughters who are members of Mu Phi Epsilon — Barbara Jackson Miller, violinist, and Jeanne Jackson Margolis, cellist. In 1949 the Jacksons moved to Tulsa, where Lois, who has become busy with a large number of piano student, accompanying, is a pianist at John Knox Presbyterian Church, president of the Women's Association of John Knox Presbyterian Church of Tulsa, and president of Tulsa Alumnae Chapter of MΦE.

CHARLOTTE-JUNE STEVENSON BURGESS was initiated into the Mu Theta Chapter in November, 1941, at the University of Texas, where she studied public school music and flute. After receiving a B.M. Degree in 1943, she attended the Eastman School of Music where she was a member of the Mu Upsilon Chapter. In 1944 she received an MM with a major in



MILLICENT AKIN, Oklahoma City Alumnae



BETTY LOU GUENTHER, MP



BOBBY McCRANEY, ΦΞ



VIRGINIA FISER, Wichita Alumnae



LOIS WENTWORTH JACKSON, Tulsa Alumnae



CHARLOTTE JUNE STEVENSON BURGESS, Salt Lake City Alumnae



JANE COMPTON, MM



SARAH EMILY KERSH, ΕΓ



JANICE KERAUS, ΦΕ



SARA WEST WINTERS, Denver Alumnae



BARBARA SWISHER, Ε



theory. From 1945-48 when she was assistant professor of flute and theory at Texas Christian University in Fort Worth she helped organize the Epsilon Epsilon Chapter. Now she is teaching privately in Salt Lake City, Utah, and is the business delegate representing the Salt Lake City Alumnae chapter.

JANE COMPTON, Mu Mu, is the newly elected chapter president. Although majoring in child welfare, she has included much music in her curriculum. A member of the Organ Guild, she has served as church organist and has sung in college chorus and church choir. She participated four years in the State Federated Music Club Contest as a pianist, and held for one year the Manhattan Music Club scholarship awarded for outstanding musicianship. She is a member of Omicron Nu and Chimes, recording secretary of Pi Beta Phi, officer of Kappa Phi, president of the Child Welfare Club, state secretary of the Kansas Methodist Student Movement, and new president of the YWCA. Honored by Mortar Board as one of the top three freshmen women, Jane is now an outstanding junior.

SARAH EMILY KERSH is the business delegate for the Epsilon Gamma Chapter of Mu Phi Epsilon at Belhaven College, Jackson, Miss. She is 20, a senior voice major, and is from Brandon, Miss. She was in high school dramatics,

band, was choir soloist, and gave a recital at Allison's Wells her junior year. At Belhaven she participates in Mu Phi Epsilon and was 1953-54 chapter president, in the Sextette, choral, "B" Club, Kappa Delta Epsilon, Alpha Psi Omega, Sock and Buskin, was chapter music delegate to the St. Louis Observance, understudy for Marguerite and chorus member of *Faust* in 1952. She was awarded a music scholarship this year by SPEBSQSA, Inc., she also directs the Youth Choir at the First Presbyterian Church in Jackson, Miss.

JANICE KERAUS is a sophomore at the College of Emporia and is from WaKeeney, Kan. She is planning to major in music with minors in history and English. She has taken part in the various music activities of the college, playing flute in the orchestra and band, accompanying for student recitals, and is one of the duo-accompanists for the chorale. She is now serving on the Student Commission of The College of Emporia, the House Government Association Council of Dunlap Hall, and will be president of Phi Epsilon Chapter during the coming year.

SARA WEST WINTERS studied piano with the Edgar Stillman Kellys at Western College for Women, and was initiated into Mu Pi Chapter of Mu Phi Epsilon at Ohio Wesleyan University, graduating in 1929. She did graduate work

in music education at New York University and Ohio State University, and was supervisor of vocal music in the public schools of Massillon, Ohio, and Delaware, Ohio, for a number of years. She left the field of education upon coming to Denver in 1945, where she is employed at the Colorado Fuel and Iron Corporation. Sara is a member of the World Trade Club of Denver, deputy corresponding secretary of Kappa Alpha Theta alumnae, and has been secretary, vice-president, and now president of the Denver Alumnae Chapter of Mu Phi Epsilon. Her sister, Mrs. Earl Engle is a patroness of Mu Rho, and her daughter, Marilyn, is a music major at the University of Denver and a Mu Rho pledge.

BARBARA SWISHER, Xi Chapter, has been an active Mu Phi Epsilon member for the past three years. Barbara was elected president of her pledge class, and since then she has held the offices of Corresponding Secretary and Rush Chairman. Recently Barbara was elected to serve her chapter as president for the coming year. A junior at the University of Kansas, Barbara is majoring in general music education and plans to teach public school music after completion of her college work. Barbara admits that making plans for the convention is tremendously exciting, and she is anxiously awaiting the day when she will be "Salt Lake City bound."

CAROL HILL, Epsilon Phi, is a charter member of this, one of our newer chapters. She is outstanding on campus scholastically, musically, and socially. Carol began her musical activities in high school where she was active in choir and small vocal ensembles. During her junior and senior years she was contralto soloist in a performance of the *Messiah*. She is now Vice President of Epsilon Phi, a member of the famous "Singing Quakers Symphonic Choir" at Friends University, and small vocal and piano ensembles. She has a solo scholarship at Hillside Christian Church.

## Pacific:

CORA DEE PETERSON, Mu Zeta, is a junior at Whitman College at Walla Walla, Wash. She is a piano major and newly elected president of Mu Zeta. She has also served as secretary (recording and corresponding) of Mu Zeta, is vice president of the junior class of Whitman College, general chairman of the 1954 all-campus Choral Contest, a member of National Spurs, past secretary of Panhellenic Council, and is a member and secretary of Delta Gamma.

MARY LOU TEAGUE has lived all of her 20



years in Eugene, Ore. With some piano background, she began studying voice in the eighth grade and continued throughout high school. During this time she took part in a number of concerts and musical productions while soloing at her church. At the end of her junior year she attended College of the Pacific Music Camp at Stockton, Calif., for six weeks. She received the MΦE cup of recognition and the Maude Densmore Scholarship upon graduation. During the following summer, she was awarded a \$500 scholarship with the title of "Miss Oregon-1952" and competed at Atlantic City. Entering the University of Oregon School of Music in the fall of that year, she became a Mu Phi the last of her freshman year. She will be of junior standing when resuming her studies this fall and will wield the gavel in Nu Chapter. A Bachelor of Music Degree in music education with a voice option is the present object of her endeavors.

ETHEL BLANCHARD, Mu Eta, is a junior at the College of the Pacific. Her home town is Dallas, Ore., and she was graduated as valedictorian of her high school class. She received a scholarship from Linfield College at McMinnville where she studied two years as a piano major. She was initiated into Epsilon Theta in 1952 and served as vice president in 1953. In the fall of 1953 Ethel

transferred to the College of the Pacific to major in musical therapy. Here she affiliated with Mu Eta and served as warden and magazine chairman. She is now vice president of the group. She is presently studying under a Rosenberg Fellowship and plans to achieve a Bachelor of Music Degree with a major in Musical Therapy by June, 1955.

ROSEMARY WEAVER calls Bogota, Colombia, South America, her home, but at heart she is a true Oregonian, especially after having lived in Grants Pass, Ore., most of her 21 years. For the past three years Willamette University, Salem, has been proud to have "Rosie" as a student and leader on the campus. Aside from the time she devotes to her studies in music education, she is busy presiding over Phi Lambda Chapter. Her position as Business Manager of the School of Music of Willamette entitles Rosie to a seat on the Financial Board of the University. Musically, Rosemary's interests are in the clarinet and the viola, and somehow she manages to find time to participate in the University band, orchestra, and a capella choir. Her ambition—to help other people experience and love music.

HARRIET PAYNE, violist and composer, is a graduate of the American Conservatory of Music from which school she holds a M.M. Degree.

THE MAY 1954 TRIANGLE OF MU PHI EPSILON

## Pacific:



CORA DEE PETERSON, MZ



ROSEMARY WEAVER, ΦA



NORMA JO MILLER, Spokane Alumnae



LUCILE CARMICHAEL LUNDBERG, San Francisco Alumnae



MARY LOU TEAGUE, N



HARRIET PAYNE, Beverly Hills Alumnae



PETRA ONELLA LEE, ES



WILLA MAE COLVETT, EH



ETHEL BLANCHARD, MH



MARY ELLEN DAVIDSON, MB



CAROLYN REED TRAVIS, Tacoma Alumnae



She has been a member of the Cincinnati and Indianapolis Symphony orchestras, having been first violist of the latter. She has given recitals in many parts of the United States and now is a member of the recording orchestra for Universal-International Pictures. Harriet has taught at Interlochen, Jordan Conservatory, University of Southern California, and Los Angeles Public Schools. She has won the Mu Phi composition cup, and first prize for former winners; her compositions have been performed by the Rochester, Pittsburgh, and Indianapolis Symphony Orchestras and by chamber music groups and soloists.

MARY ELLEN DAVIDSON, Mu Beta Chapter's business delegate to the National Convention, is a junior from Aberdeen, Wash., majoring in music education, minoring in voice. Mary Ellen is a very active girl on campus with school events as well as musical projects. She is a member of the Madrigal Singers, the college choir and has played in the college orchestra. Also she does a good deal of solo work, having sung leads in various productions of the music department.

NORMA JO ANDERSON MILLER is president of the Spokane Alumnae Chapter. She was initiated into Mu Beta Chapter in 1940 and was graduated from Washington State College in 1941 with a BA in music education and voice. A

mezzo-soprano, she has sung in several choirs and at present gives informal piano and vocal programs for small groups. Her hobbies are fashion modeling and fishing.

PETRA ONELLA LEE was born at Bellingham, Wash., and raised on the Lummi Indian Reservation six miles out of Ferndale, Wash. She attended the Ferndale schools. When she was seven years old, her sister, Anna, taught her the notes, and that was her beginning on the piano. The first piece she taught herself was "By a Broom." Onella showed a lot of talent. Her first teachers were Mrs. Abbie Raymond and Miss Marjorie Brighthouse of Bellingham. She is now attending Pacific Lutheran College, a piano major, studying with Professor Karl Weiss. Onella is president of Epsilon Sigma Chapter of Mu Phi Epsilon at Pacific Lutheran College, Parkland, Wash.

CAROLYN REED TRAVIS writes: "My early musical training began at the age of seven and was continued irregularly throughout high school. In my senior year, I was selected to perform at the National Piano Contest. Two years in Valparaiso University, Indiana, started my public school music training and this was completed at the University of Southern California where I became a member of Mu Nu Chapter. After one year of graduate work, I was on the staff of the



Los Angeles Conservatory of Music as a piano instructor and also taught third and fourth grades in Long Beach. Three years in Spokane brought wonderful associations with Mu Phi. At the close of the war, my husband and I moved to Germany. We enjoyed concerts in Munich, Salzburg, London, and Paris. Now I am teaching privately and am a member of the Washington State Music Teachers Association."

LUCILE CARMICHAEL LUNDBERG received her B.M. Degree from College of the Pacific, Stockton, Calif., majoring in piano and public school music. Following graduation she taught in elementary, junior high, and high schools. In 1935 she married Olof Lundberg who reorganized the accounting department of the University of California and later became comptroller, which important post he held until his sudden death a few months ago. Lucile is extremely active in university and civic affairs. She is vice president of the University YWCA and on its board of directors; is also serving on the directorate boards of Alpha Gamma Delta (her social sorority at UC); the Berkeley Community Chest; the Young People's Symphony Orchestra; and is a committee member of the



BARBARA DIETRICH,  
Eugene Alumnae



PATRICIA LEE, EI



FRANCES HUFF BUTLER,  
Seattle Alumnae



MARILYN THORN, MN



PEARL ALLISON PETERSON,  
Portland Alumnae



SARA MAE PETERSON, T



LUCILLE CROFT TACKLEY,  
Los Angeles



LENORA GEBBETT,  
Sacramento Alumnae



JEANNE MOORE, ΦN



ROSALIE V. SPECIALE,  
San Jose Alumnae



MARGERY P. MCINTOSH,  
San Diego

Women's Auxiliary of Herrick Hospital and of the Foreign Students at International House on the Berkeley campus. She is again teaching full time in the Oakland Public Schools. A busy lady, Lucile! So thinks her teen-age daughter, Karin, of Berkeley High School.

WILLA MAE COLVETT is a junior at George Pepperdine College in Los Angeles. She is a native of Chicago where she attended Northwestern University Evening School and Chicago Musical College. She enrolled at Pepperdine upon receiving a scholarship from that college, and is a music major, working toward a B.A. Degree. She was initiated into MΦE in 1953 and has served her chapter as chorister. She is an active member of the college chorus and madrigal group and has appeared in Opera Workshop productions of *The Mikado*, *Down in the Valley*, *Bastien and Bastienne*, *The Magic Flue*, *Hansel and Gretel*, Mozart's *Marionettes*, *Dido and Aeneas*, and *Little Red Riding Hood*.

BARBARA HEARTFIELD DIETERICH grew up in New York state and Baltimore, was graduated from Wellesley College in 1944 as a music major. In college, afterwards while doing radio writing in Boston, and at Longy School of Music, Cambridge, she studied voice with Mme. Olga Averino. She moved to Eugene in 1946, working

as newspaper music critic and in a music store, taking graduate work at University of Oregon where she was initiated into Nu Chapter. She married Milton Dieterich, professor, cellist, composer, organist, choir-master, in 1948 and is busy now with sons aged 4 and 2, church choir and other singing, and Mu Phi Epsilon.

MARILYN THORN, a junior at USC, majors in piano. She is now President of Mu Mu Chapter of MΦE and is treasurer of the Music Council at the University. She studies with Hans Lampl and teaches privately.

Marilyn's honors and scholarships have been in the field of fine arts. She won one of the Scholastic Achievement Keys in the Scholastic Art Award Contest in 1948 and attended the Chouinard Art Institute on scholarship concurrent with her last years in high school. This year she sang in the chorus of *The Merry Wives of Windsor* under the direction of Carl Ebert and Dr. Walter Ducloux. Marilyn teaches and runs an elevator part time, and these things together with her work in Mu Nu Chapter leave little time for outside activities and hobbies. She herself says, "Mu Phi Epsilon has been my honor, hobby, and outside activity!"

LENORA GEBBETT is a charter member of Sacramento Alumnae Chapter. She served as secretary of the chapter in

1952-53 and as president, 1953-54. Upon graduating from the Sacramento Junior College she was the recipient of the Bertha Elkus Music Award, an award presented to the outstanding music major. She was also a member of Phi Theta Kappa scholarship society. While attending College of the Pacific, where she obtained B.A. and B.M. Degrees, she was pledged to Mu Eta Chapter of MΦE. She has also done graduate work at Columbia University and special work in choral music under Peter Wilhousky. At present, she teaches music (choral and theory) at C. K. McClatchy Senior High School, Sacramento. Traveling is her hobby, and it has been her privilege to visit many countries and to attend some of the European music festivals.

PATRICIA LEE, born in Odessa, Wash., attended school in Odessa, Cheney, and Rosalia, graduating from West Valley High School, Spokane, in 1951. A voice scholarship student at Eastern Washington College of Education, Cheney, she is on the honor roll, and a member of Key Student Honorary. First flutist with the EWCE Band, and soprano soloist of the Collegiate Chorale, she is also president of the Collegiate Chorale, and Epsilon Iota Chapter of Mu Phi Epsilon.



PEARL ALLISON PETERSON, Portland Alumnae, was formerly a member of Phi Nu at UCLA. She received her Bachelor of Education Degree at UCLA and later her master's degree at the University of Oregon. She studied piano with Vernon Spencer and Thile Becker and theory and harmony with Carolyn Alchin. She taught music and dramatics in a Los Angeles high school for 10 years, then married and moved to Portland, Ore., where she has since lived and been active with the alumnae chapter. She has composed many songs for children, and many have been used in local public performance. She has three children who are studying on five music instruments, and Pearl claims it is harder on her than on them. She is Portland Alumnae Chapter president for next year and is also president of the Board of Directors of Parkrose Children's Theater.

JEANNE MOORE, new president of the Phi Nu Chapter, will continue her music education major as a graduate this fall, working to complete her general secondary teaching credential in addition to her special secondary. In addition to studying voice, Jeanne has an active interest in drama and theater production. Her minor is theater arts, and while at Pasadena City Col-

lege she was active as a director and actress. Since she has been at UCLA, she has been a member of Zeta Tau Alpha and has served in Mu Phi Epsilon as vice-president and rush and pledge chairman.

FRANCES BUTLER was initiated into Omega Chapter, affiliated with Mu Xi, and is now a member of Seattle Alumnae Chapter, serving her second term as president. She holds B.A. and B.M. Degrees from Drake University with majors in violin and piano, M.A. from the University of Chicago with a major in music criticism. She was a scholarship student with Herbert Butler of the American Conservatory of Music and formerly taught at the Starrett School for Girls in Chicago. She taught violin and piano at the American Conservatory in Chicago and was head of the South Side School of the same institution. She directed the Mu Phi Epsilon School of Music at Gads Hill and now teaches privately in Seattle and directs the choir of the Lake Forest Park Presbyterian Church in Seattle. She is a member of two local music clubs, Ladies Musical Club and Seattle Musical Art, and also is a PEO and a member of Kappa Delta Pi, national education honor fraternity. She is active in the Young Adult Program as a lay leader at the Downtown Branch of the Seattle YMCA where her husband, Jerry, is the Youth Director and Membership Secretary.

This will be the sixth National Convention of MΦE that Frances has attended.

SARA MAE PETERSON was born and reared in Yakima, Wash. While in high school she was very active in the National Honor Society, student government, sports, and music. She was a member of the Advanced Choir and The Madrigal Singers and appeared in many operettas and plays. She was also Worthy Advisor and a Grand Officer in Rainbow. Sara Mae is now a junior at the University of Washington, majoring in voice. She has served as recording secretary of Tau and is now serving as president. She participates in a number of campus activities, among them being The Madrigal Group, appears in campus operatic productions, and is also a member of KKT.

ROSALIE SPECIALE, one of the winners in the Musicological Research Contest of the past year, received her BA from San Jose State College, with general elementary and special secondary in music teaching credentials. She received her MA from Stanford University in August, 1952, and has studied piano with Benning Dexter, now on the faculty of the University of Michigan, and with Dr. William L. Crosten of Stanford, under whom she wrote her MA thesis. She has taught in elementary schools in the San Jose area and at present is teaching private piano



pupils in San Jose and Palo Alto, directs the choir at Holy Family Church in San Jose, and is a teaching associate at Stanford.

LUCILLE CROFT TACKLEY is descended from John Carver who came to America on the Mayflower, but she lived originally in Lincoln, Neb., and came to Los Angeles in 1923. After two years at girl's boarding school in Adrian, Mich., she attended the University of Nebraska where she received in the same month at the age of 21 two degrees—Bachelor of Fine Arts and Bachelor of Music. Lucille and her twin sisters, Irma Jean Croft and Miriam Croft Moeller, are all three members of Mu Phi Epsilon and Kappa Kappa Gamma. After graduation she taught piano on the faculty of the University of Nebraska Conservatory and has taught piano privately and in private schools since then. Twice Lucille has served two-year terms as president of the Los Angeles Alumnae Chapter.

MARGERIE MCINTOSH received her Bachelor of Music and Master of Music Degrees from the University of Washington where she was a member of Tau Chapter. The field of psychology then captured her interest and she has been a school psychologist, a research psychologist with the Air Forces, and at present is director of guidance in La Mesa, a suburb of San Diego, California. Her Doctor of Education

Degree is from Stanford. Undergraduate affiliations include Phi Beta Kappa and Delta Zeta. Present affiliations include AAUW, American Psychological Association, Soroptimists, and San Diego Association of Psychologists and Psychiatrists.

DORA WATSON was born in Santa Cruz, Calif., and attended schools in Vallejo, Calif.; Phoenix, Ariz.; and Madera, Calif. She is currently attending Fresno, Calif., State College. She studied violin privately for three years and played the violin in elementary school for eight years. She also studied trumpet privately for one year. In high school she changed from trumpet to French horn but had no training in it. She began serious study on the French horn in 1951 with James H. Winter at Fresno State College and at present she plays in the Fresno State Symphony Orchestra and is first horn in the Band and the Brass Choir of the college. She was initiated into MΦE in the spring of 1952 and in 1953 she was elected to the office of chorister which arranges the Music Department's monthly programs. This spring she holds the office of president of the Phi Chi Chapter of Mu Phi Epsilon.

CRYSTAL CAMPBELL is a junior majoring in music at Linfield College, McMinnville, Ore. She is president of Epsilon Theta and presented a

piano recital in April. Crystal is also active in other activities on campus and has been an officer in Spurs, the sophomore honorary, Christian Student Union, and in her social sorority. Crystal's home is in Pocatello, Ida., and summer will find her again assuming her duties as director of Christian Education at the First Baptist Church of Pocatello. Crystal is planning to combine music with education and enter the field of music education.

VERNA RAE HARKEY, Long Beach Alumnae, holds a BA Degree from George Pepperdine College and during her school years was one of the charter members of Epsilon Eta Chapter, at which time she was an active member of the school chorus and other musical affairs. Since graduation she has been teaching piano and has been associated with a Musical Writers Guild, has held the office of president in the Long Beach a capella singers, and is one of the charter members of the Long Beach Alumnae Chapter.

AVA COMIN CASE, Ann Arbor Alumnae, and ROSE BRUNO, Maumee Valley Alumnae, are music and business delegates. See page 31.

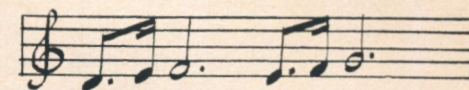
The following are representing their chapters as business delegates:

SUZANNE SMILAX, Epsilon.

MARIE GORSUCH, Mu Theta.

RAMONA GONZALES, Epsilon Upsilon.

# NOTES



## About Mu Phis and Otherwise

△ SPRING finds us all on somewhat of a veritable merry-go-round. This is particularly true of college students and instructors with end-of-school activities, recitals which may or may not be required, to say nothing of the myriad reports, etc., which must be in before such and such a time. There is an excitement in the stepped-up tempo of activities which seems to permeate the very buildings themselves. Active chapter letters reflect this feeling in comments about graduation recitals, losing valued members through graduation. To sisters who find themselves finishing one phase of life—that of completing college—we wish fulfillment of hopes and dreams and our best! . . . The National Music Council has awarded its Annual Conductor Citation for the season 1952-53 to Guy Fraser Harrison, conductor of the Oklahoma City Symphony Orchestra; this citation is given each year to a conductor of a major symphony orchestra for the presentation of important American compositions on the regular subscription series of concerts in the orchestra's home city. . . . Epsilon Xi Chapter presents weekly radio programs over radio station WILL. For the most part the programs consist of selections by one member of the chapter, thus providing experience for the performer as well as an effective way to publicize MΦE. The

chapter feels fortunate to have an alumnae group in Urbana which is so interested in their work. MΦE, ΦMA and ΣAI combined to present an excellent concert in Smith Music Hall at the U of Illinois with solo selections by members of all groups and choral numbers sung by a combined chorus of the members. Their three remaining charter members are graduating in June: Phyllis Murphy, a member of Mortar Board, will sing a leading rôle in a forthcoming Opera Workshop production; Connie Ogan, member of U of I Orchestra and Sinfonietta, will play her senior violin recital; Nancy Popel, member of Mortar Board and student director of Illini Union Department of Cultural Affairs, will present her senior pipe organ recital. . . . Arturo Toscanini, eminent conductor of the NBC Symphony, conducted his final concert on April 4, 1954. Without any fanfare, the 87-year-old maestro left his post, making no special occasion of his last concert which was an all-Wagner program in Carnegie Hall. The NBC Symphony Orchestra was created especially for his use 17 years ago and is continuing to the end of the season under guest conductors after which time it will be disbanded. The thrilling performances by this great orchestra and maestro are cherished memories for many of us. . . . Epsilon Delta now has 22 active members;

the chapter held winter and spring concerts and Virginia Bitar, soprano, gave her senior recital in the early spring. Bonnie Newburgh Hensley received the honor of being selected to sing with the Seattle Symphony orchestra in December. Epsilon Delta and members of Phi Mu Alpha enjoyed a Christmas caroling party and Maude Bohlman, instructor in voice, offered her room as a permanent meeting place for the chapter. A bulletin board in the form of a triangle has been hung in the hall of the theatre to announce meetings and activities. . . . The John Philip Sousa March Competition award of \$1,000 was recently presented to Col. Carl W. Hoffman, graduate of Drake University; his composition was entitled "Esprit de Corps March" and the award was made by the Armed Forces-American Society of Composers, Authors and Publishers. Mrs. Hoffman is the former Ruth Allene Mehrens, Omega, who received a bachelor of music education degree from Drake. . . . Indianapolis Alumnae vocal ensemble, directed by Charlotte Moore, presented two short cantatas, *The Birth of Christ* by Richter and *Rex Gloriam* by Gaines at their Christmas party and dinner. Wanda Stewart Wheeler gave a program in January on "An Illustrated Visit to European Music Shrines," showing pictures taken by her and her husband while he was stationed at Ulm, Germany; their February meeting featured the Shortridge High School Madrigal Singers in a program of songs, and Marjorie Gaston lead a discussion on "Concerning Contemporary American Musicians." In March the alumnae chapter had a joint meeting with Kappa Chapter and later that month entertained

Kappa members and pledges at a buffet supper. The pledges presented a delightful skit of a television weather forecast show, with songs and dances pertaining to the different weather conditions throughout the United States. . . . Upsilon chorus has presented many programs during the year and chapter members were well represented on December 7 in a recital of works by student composers at Cincinnati Conservatory. A piano composition by Louise Ellis and a flute and piano composition by Mayree Jennings were performed. Two new patrons are Harvey Wilson, supervisor of vocal music in Cincinnati Public Schools and Leonard Rose, celebrated cellist. Chapter members presented a recital on March 14 at the renowned Taft Art Museum. . . . Aaron Copland's first opera, *The Tender Land*, received its first performance at the New York City Center early in April. . . . *The Musical Courier* in "A Bit of Nostalgia" reminisced about the opening of Carnegie Hall on May 5, 1891, with Walter Damrosch conducting and Peter Iljitch Tschaikowsky as guest conductor in his first American appearance. . . . Among the "doings" of Phi Omicrons are: Eunice Podis performed Gershwin's Rhapsody in Blue to a capacity audience in Severance Hall with the Cleveland Orchestra at a Sunday afternoon concert; she also assisted a Chamber Music Program of Cleveland Friends of Music sponsored by a Mu Phi patron, Dr. Jerome Gross, playing the Shostakovich *Piano Quintet* and the Brahms *Horn Trio*. Eunice also assisted the Knitzer Quartet in the Schumann Quintet at the Cleveland Art Museum. Mary Simons, soprano, sang

Schubert's "Winterreise" in Severance Chamber Music Hall with Leonard Shure at the piano. These two artists also performed this same work very successfully in Pittsburgh recently. Phi Omicrons playing in the Cleveland Symphony Orchestra, conducted by George Szell, include Marion Brown and Muriel Carmen in the viola section and a pledge, Shirley Trepel, in the cello section. Shirley performed the Lalo *Cello Concerto* with the Cleveland Philharmonic on January 17. Hazel Kerlin, violist, is a member of the Erie Symphony Orchestra. Jeanette Drinkall, violinist, was selected by Leopold Stokowski in a nationwide audition to be a member of his All-American Collegiate Orchestra. She appeared as soloist in the Bach *A minor Concerto* with Western Reserve University orchestra in November and also played a program in February for the Music and Drama Club of Cleveland. Joan Terr Ronis, pianist, gave a recital in January in the West Shore Concert Series; Joan Kleinfeld, violinist, gave a joint recital with her husband, George, baritone, in February at Lake Erie College for Women. Muriel Carmen, violist, played the Arnold Bax *Sonata for Viola and Piano* and a *Sonata for Clarinet, Oboe, and Viola* by Alvin Etler, former Clevelander, at Cleveland Institute of Music. In May she will assist the Knitzer Quartet in the Brahms *Quintet* at Cleveland Institute. Ann Stevenson is teaching music at the Sight Saving Schools in Cleveland and in May she is supervising a play on Schumann in the elementary division for these schools. . . . Connecticut Valley Alumnae held a dinner meeting in February for members and husbands.

An interesting program on contemporary music was presented by Dorothy Guion of Springfield. A program was given in April at the Hartford School of Music and featured club members, invited guest performers and a group from Boston Alumnae. . . . Walter Hendl, distinguished conductor, has been informed that the Philippines Committee on Annual Awards for 1953 Music Personalities chose him "Visting Musician of 1953" as a result of his tour of the Philippines last October and November. He will also be awarded the honorary degree of Doctor of Music by College of Music of Cincinnati in June. . . . San Jose Alumnae's March meeting was a special event when husbands joined wives for an entertaining musical evening. Duos were played by Edith and Tom Eagan, Katherine and Wayne Sorensen, Pat and Stephen Graves, and Lorraine and Gene Dorais. Rosalie Speciale showed interesting pictures of her last summer's European trip. In April a white elephant sale aided their coffers. Two outstanding community programs were given by Violet Thomas, assistant professor of music at San Jose State College, consisting of French piano music and a discussion of various styles in music and their parallels in the field of art. Mary Ann Sanfilippo, pupil of Adolph Baller, gave a fine recital at Villa Montalvo which featured Beethoven's *Piano Concerto No. 1*; Edith Eagan assisted. Competition has been running high for the cash prize to be awarded the division chapter excelling in magazine sales, with San Jose and San Francisco Alums running "neck 'n' neck"! . . . Epsilon Mu has pledged nine new girls and

chapter members are busily working on the National Convention. . . . Lawrence Tibbett was feted at a dinner in February commemorating the 30th anniversary of his Metropolitan debut. . . . Joseph Szigeti's autobiography "With Strings Attached" is in its third printing and is now being translated into Spanish and Hebrew. . . . Evansville Alumnae invite local patronesses to join the group to share in the program which follows their monthly business meetings after these sessions have adjourned. All members participated in a program given in April at Hillcrest Home for children. Maryland Blackburn was MC; Bettye Kraemer presented Indian music; Lucille Sieber presented Pilgrim music; Neva Barnard sang music of Stephen Foster, accompanied by Helen Jasper; Jazz was performed by a trio composed of Maud Saum, pianist; Maurine Taylor, violist; and Kathleen Sweeney, violinist. Contemporary music was presented by Rossanna Enlow and Mayme Dufford. The chapter looks forward to the return of three former members who will return soon to increase the chapter's ranks. . . . From Cincinnati Alumnae, Laura Neeley, who was chairman of the 1953 Birthday Observances, writes in retrospect: "Everyone on whom I called for help gave unsparingly of her time and effort. My committee made up of Bertha Krehbiel, Emma Strubbe, Alma Geiser and Alma Findlay was of untold value to me. Our meetings, fraught as they were with the difficult problems of choosing the proper materials, etc., became sources of deep pleasure, for we revived for a time, the golden past and relived again

precious moments; the first skit that was evolved was truly based on loving memory. The skits were given in the auditorium of the same College of Music where Professor Sterling studied and taught. Would that we could once again see the cast in their sweeping skirts and tucked up hair-dos! Would that we could once again see Doris Wulff teaching a rhythm to her slightly shocked but highly intrigued sorority sisters! The closing words of the second skit came from Alma Geiser, typifying, as she does, the sisterly spirit that animates MΦE, that 'with music to soothe us, with friendship to warm us, surely harmony will always be ours.' With lovely instrumental and vocal music, I think we all felt again for a time the gentle, benign influence of our beloved Founder." . . . Denver Alumnae sponsored a recital program in January of two-piano numbers by Ollie Jane Stohman and Gloria Brown. A buffet supper and musicale honored Wanda Burkett who was on her inspection tour; at this time music delegate nominees to convention presented the program featuring Mu Phi composers among whom were represented: Mildred Hunt Harris, Blythe Owen, Joyce Sadler Orr, Ollie Dungan, Harriet Ware, and Mildred Tyson. Performing these were: Joyce Sadler Orr and Jane McCluggage, pianists, and Violetta McCarthy, contralto, accompanied by Gladys Kendall. "Nature in Music" was the theme at the March program featuring Henrietta Sheldon, and Dorothea Seeman, pianists and Emily Joy, soprano. "There is a Green Hill Far Away" set the atmosphere for the April program. Their annual scholarship tea was held at University of Den-

ver to climax the year's music efforts. . . . Lincoln Alumnae are proud of Irene Barber, who will represent the Women of the Midwest Conference of the Chamber of Commerce at the U. S. Chamber of Commerce National Convention in Washington, D. C., the last week in April. Many alumnae members are serving faithfully on the Board of the Lincoln Symphony Orchestra. Much of their effort has been devoted to making the life of Mu Gamma members happier for having become a Mu Phi, thereby in turn inspiring these girls to attain much well deserved publicity and to have the largest pledge class possible that Mu Gamma has ever had. In February, Adelaide Ports Spurgin, president and Minister of Music in the First Methodist Church, presented to Billie Croft, their annual \$50.00 Scholarship for her outstanding ability and active interest in the promotion of Music. Billie is the daughter of Helen Hille Croft, former Mu Gamma. Late in April the alumnae chapter held a Musicale for the benefit of the local treasury. . . . Epsilon Rho at Montana State University sponsored a luncheon for Igor Gorin, his wife, and his accompanist when he appeared in Missoula. Their first meeting of the year was highlighted with talks by Carol Critelli and Delores George about experiences at Interlochen last summer. A successful money-making project was launched in distributing and selling laundry soap in the living groups at MSU. Six new members have been initiated and plans being made for a Contemporary Music Recital and a reception for James Melton after his Community Concert there. EP and ΦMA

members have had joint meetings and a Christmas Party for the School of Music. Tragedy and sorrow struck members of the chapter when four girls were involved in a serious accident on the way to a nearby town to give a formal concert on Nov. 20. They were seriously injured and spent considerable time in the hospital recovering. . . . An important chapter of televised opera closed with the NBC-TV performance of *The Marriage of Figaro*, sung in English early this spring. . . . International relations are further being promoted with the appearance in New York of the Azuma Kabuki Dancers from Japan. Their New York appearance marked the first one given outside Japan and was the beginning of a world tour. . . . A forgotten work "Taillefer" by Richard Strauss was given its first performance in the United States in February by the Eastman School of Music Chorus and Orchestra. . . . Russell Lanning has written a new book, *Bach Ornamentation*. . . . Sigma has pledged seven girls and welcomed four transfers to their midst. Irene Siebens, organist, represented the chapter in the Professional Panhellenic assembly in January and has appeared in vesper concerts at the First Methodist Church in Evanston. Virginia Vosper and Marilyn Halley, pianists, presented their senior and graduate recitals; Irene Taylor, violinist, played in several string quartets at the Composers Symposium consisting of student compositions; several chapter members participated in presenting Bach *Cantatas Nos. 65 and 11* at the MENC Convention. In celebration of our 50th Anniversary, Sigma, in collaboration with Evanston-North Shore Alum-

nae, gave a scholarship recital in April in Lutkin Hall which featured two prominent Mu Phis in the Chicago area: Francon Gilbert, pianist, and Elizabeth Wisor, contralto, who has toured extensively in concert and opera both in this country and abroad and now on Northwestern's faculty and Sigma's faculty adviser. . . . New York City Alumnae members Maria Yauger and Betty Lou Scandling, sang in the Michael Todd production of *A Night in Venice* at Jones Beach last summer; a unique series of programs which have been successful have been given by a group called the "Intimate Concerts Association," of which Mary Gale Hafford, violinist, is the musical director. Its programs are devoted to rarely heard chamber music works. Mary Gale also appeared recently in a concert at the Brooklyn Museum as part of the American Music Festival. . . . Epsilon Chapter has as new pledges Janice Stromwall and Eilene Duck. Bernice Oechsler, Mrs. Vaughn Stacy, and Dr. Bess Cunningham were honor guests at a banquet for these pledges in March. . . . June Hook, Stockton Alumnae, delighted audiences with her "Susanna" in the College of Pacific production of *The Marriage of Figaro*. Gladys Crane had her first experience conducting Gilbert and Sullivan *The Mikado*; Margaret Spring has kept Stockton Alumnae members renewing or starting magazine subscriptions to help in our Gads Hill project effort. . . . Long Beach Alumnae members had the privilege of participating in the project of giving the radio broadcast on April 1 which went overseas to men in service. . . . Ernest Bloch received two awards from New York Music

Critics Circle; it was the first time in history that two awards have gone to one composer—these for his *Concerto No. 2* and *String Quartet No. 3*; a third award went to Jacob Avshalomoff for his new choral work *Tom O'Bedlam*, his first Critics Circle Award. . . . Leonard Bernstein has consented to write his first film score for *On the Waterfront*. . . . the Pittsburgh Symphony, directed by William Steinberg, gave its second annual concert saluting Pittsburgh area labor and industry with piano soloist Hazel Scott. . . . Mu Upsilon's Karen Maesch, cellist, appeared on the program at the Atlantic Province Anniversary Observance; each year the Eastman School honors those students who are most outstanding in their fields by awarding them the Performer's Certificate. Included in the award is the privilege of soloing with the Eastman-Rochester Symphony Orchestra. This year four members of the chapter won this certificate: Donna Geis, flute; Jo Ann Haynes, horn; Karen Maesch, cello; and Kathryn Silber, piano. . . . Boston Alumnae held a Spring Tea for junior and senior members of Beta and Phi Upsilon in March; their annual Progressive Dinner Party, with their husbands and other guests attending, proved to be its usual gala affair. Eugenia Frothingham Lombard composed a special choral composition for the Christmas service at the Arlington Street Church in Boston which was so well received that it will be used each year as part of their Christmas service; in February Harriet Harlow presented two vocal concerts at Dana Hall of Wellesley College, Francis Eaton Ruggiero, violinist, and Harriet Hayes Buckingham, soprano,

teachers at the Music Guild Studios in Natick, Mass., presented an afternoon musicale for the Natick Women's Club. . . . Mu Epsilon finds candy sales to be successful at MacPhail College of Music, having had several during the school year. On March 27 their annual Open Program consisted of Ancient to Modern Music, including Pre-Bach to Schoenberg. Those participating were: Marjorie Bolton and LaDon Dusbabek, sopranos, accompanied by Marilyn Singsaas and Sigrid Enbom, and pianists Joan Fuller, Marilyn Ronning and Sigrid Enbom. . . . Columbia (Mo.) Alumnae, in a January meeting, enjoyed a program "Music Directors meet the Mu Phi Press." Nesta Williams gave an organ recital in Stephens College auditorium in January; two members of the club presented papers at the West Central Division convention of the MTNA at Omaha in February: Geneva Young gave a paper entitled "The properties of Tone as Related to the Voice," and Nesta Williams one on "Teaching the Beginning Organ Student," each given in their respective sectional meetings. Betty Fretz Mulchy, cellist, appeared in a concert given by the U of Missouri String Quartet on March 11. . . . Phi Theta pledged six girls this spring and two of their pledges, Nita Steed and Kay Sherwood, won the Young Artists contest in piano; they performed in the MΦ Vesper Concert on March 21 with vocalists Suzi Null and Rosemary Dysart. Suzi, Iris Altrogge, and Jacqueline Lyerly were soloists in the choir's presentation of *The Creation* in March, and Molly Peterson played the organ for a children's radio program in St. Louis and sang solos in the

choir. . . . Mu Xi has initiated nine girls this spring; the chapter presented two of its patrons, Bernard Izzo, baritone, and Robert Jones, pianist, in a joint recital at the American Conservatory in February; both men are faculty members and their program included compositions by Cesti, Handel, Mozart, Bach, Schumann, Chopin, Fischer, Fenner, Ivy Herbert, MacGimsey and Prokofieff. Ruth Lowry Sawyer, soprano, was heard in the Chamber Opera's presentation of Menotti's *Amahl and the Night Visitors*. Evelyn Fagg and Pansyetta Glaser are appearing in performances of the Opera Workshop and the Oratorio group of the American Conservatory. . . . Budapest String Quartet are playing their second tour of Japan and played for the Emperor and Empress of Japan. Their first appearance was a combined radio and TV program and celebrated the first year of television in Japan. . . . The eighth annual Music and Drama festival is being planned by Edinburgh. . . . Dimitri Shostakovitch has been nominated to receive the Stalin prize for his new *Tenth Symphony*. . . . on March 12, 1954, the world premiere of Arnold Schoenberg's opera, *Moses and Aron*, took place at Hamburg Music Hall in Germany. . . . Mu Beta sponsored a tea honoring their patronesses with a program provided by new initiates. The chapter held its annual Silver Tea in April, an event which was well attended by campus and townspeople alike. . . . Beverly Hills Alumnae held their annual Christmas Tea for Mu Phis and their friends, featuring Marguerite Ebel, soprano, and Harriet Payne, violist. In January Harriet Rice shared her experiences of her

summer spent in Hawaii and showed treasures and colored slides in illustration; Elfrieda Dolch gave a talk illustrated by slides, on "Historic German Organs" in April. Chapter members have held monthly musicals for hospitalized veterans and find this work very rewarding. A fund raising project besides their regularly successful Christmas cake sale, was that of an evening of three book reviews given by Dr. Russell Squire, Music Department Head at Pepperdine, at the home of the President of the College, Dr. Hugh Tiner; choral numbers were provided by Epsilon Eta. Williametta Spencer is in Paris on a Fulbright Scholarship. . . . Mu Delta Chapter presented a convocation at the Kansas City Conservatory with Beverly Ligon, Beverly Evans, Verna Brackinreed, Chai Ok Lee, and their guest, Chai Sin Lee, on the program. . . . Mu Phi Chapter presented its annual assembly program on February 18; the same program was also presented for several high schools to raise money for the Sterling-Mathias Memorial Fund. MΦ and ΦMA held their annual formal on April 4 with a predominating theme of "Southern Hospitality;" decorations featured a fountain, spanish moss and dogwood trees. Five new members were initiated in April and a musical program ended a busy season. . . . Fresno State College sponsored a solo and small ensemble festival for elementary and high school students in March with several Phi Chi members serving as judges' aides. Phi Chi pledges performed on a recital program March 14 and Pauline Oneto presented her senior recital in March. Appearing on the February departmental recital were: Dora

Watson, horn; Yvonne Krikorian, piano; Emily Berenson, kontralto. . . . Philadelphia Alumnae Chapter was very creditably represented by Delphine Desio, cellist, at a lovely dinner meeting given by the newly formed Philadelphia chapter of PPA in connection with "Music for the Blind month." In their joint musical program in February with ΣAI, Patricia Judd, soprano, and Adelia Cubbon, cellist, accompanied by Margaret Thomas Weyand and Edith Kimple Edminster, respectively, represented Philadelphia Alumnae. Several members appeared in a program on February 18 at the Home for Incurables. . . . Phi, at Mount Union College, presented their annual fall-winter recital in November. Each year at Christmas-time the choirs and orchestra of Mount Union College combine to present *The Messiah* and a Christmas program. It has become the custom for Phi members to sell refreshments at the combined rehearsals. Another annual project is that of providing the service and refreshments at the "Pop" concerts, thus providing publicity and financial returns for MΦE. . . . Wichita Alumnae have just completed their auditions for the annual scholarships at each university in Wichita where we have chapters with Lucretia Crum and Carol Burchett being the winners. Virginia Fiser has taken over the duties of the presidency upon their losing Mrs. John Hopkins, who has moved to San Diego. . . . Spokane Alumnae met in January at the Sampson-Ayers Co. at which time Arthur Biggs demonstrated the Hammond organ. A program given for Veteran Hospital patients was given by Mary Jane Yantis, clarinetist, Bar-

bara Comeaux and Frances Uhden, violinist and flutist, Dorothy Murray, Margery Halverson, pianists, and Betty Bell sang several songs. . . . Chicago Alumnae Chapter enjoyed a luncheon at the Oak Park Country Club in December at which time a Christmas sale was held of hand-made ornaments, etc. Among members to win distinction recently are: Edith Anthony, flute soloist with Florida Symphony; Brenda Baum and Mary Stearns, pianists, Chicago Public Library concert presented by the Musicians Club of Women; Octavia Gould, whose "Winter Adeau" has been chosen as one of the three suggested numbers for women's voices for the 25th annual Chicagoland Music Festival; Blythe Owen won the Mrs. H. H. A. Beach Award for the third time and also the American Penwomen first prize for a trio of women's voices; Mae Doelling Schmidt was heard in a Latin-American program at Peoples Church and her "Enchanted Garden in Gnomeville" is to be given as a benefit performance for the Chicago Women's Musical Club; Grace Wisner won the membership award for her three-part Women's Chorus (American Penwomen). . . . WNYC premiered its new "Speaking of Music" series on March 7 with its host on the first show being the noted violinist, Joseph Szigeti; other hosts scheduled to give unrehearsed talks and introduce music on the program are Antal Dorati, music satirist, Anna Russell, and violinist-conductor, Alexander Schneider. . . . RCA Victor has released important discs, *William Kapell in Memoriam*. . . . Carl Friedberg, world-famous pianist, friend of Johannes Brahms and pupil of Clara Schumann, has, for the first time during his long lifetime, re-

corded compositions of Schumann and Brahms under the Zodiac label. The recording is a living monument of an era in music of which Mr. Friedberg is one of the last exponents. . . . The fortieth biennial May Festival at Cincinnati will take place in Music Hall during the first week in May. Among the works to be heard will be a contemporary work by Franz Schmidt, *The Book With Seven Seals*, based on a text taken from the *Book of Revelations* by St. John. This performance will mark its first performance in this country and its first performance in English. The 1954 Festival will also introduce to Cincinnati one of the ranking conductors of the day, Josef Krips. . . . A new Charles Wakefield Cadman scholarship, in composition, will be made at the University of Redlands upon the opening of the annual Spring Festival of Arts. Mr. Cadman was a patron of MΦE. Funds for this scholarship are being donated by music clubs and individuals in the country under the sponsorship of NFMFC. . . . Heitor Villa-Lobos, Brazilian composer, received a honorary degree of Doctor of Music from University of Miami in February in recognition of his contributions to music as a composer of international acclaim as well as to music education in his own country. . . . Oklahoma City Alumnae and ΣAI held their annual joint meeting at the home of Ruth Petty; a current issue of *Musical America*, in an article on new records, gives Mildred Andrews, organist, a four star rating on her two new recordings of modern composers. Two stars were given to records made by the University Trio whose membership is composed of Mu Phi patrons, Keith Wallingford, pianist, Robert Gerle, violinist, and Gabriel

Magyar, cellist. . . . Mu Kappa initiated Sylvia Zaremba, pianist and new faculty member at Oklahoma University, who will be one of the soloists with the Oklahoma City Symphony next season. . . . Nu Chapter members have been of service in the U of Oregon school of music, beginning with assistance in pre-registra-

tion, and serving in the capacity of ushers and performers. In December a Christmas Prelude was given jointly with Phi Beta and ΦMA local chapters. . . . Rochester Alumnae Chapter enjoyed Alma Jackson's colored films of her recent European trip and a short musical program given by Hazel Duncan, pianist. . . .

## Toledo Youth Orchestra

△ "It was a children's crusade of more import than was generally realized when the Toledo Youth Orchestra took off for Detroit to play for the Music Teachers National Association (East Central Division) and the American String Teachers Association in February convention.

"The 58 young musicians sounded a triumphal note, flew a brave banner, symbolizing the full and complete emergence of Toledo's musical life from dark ages of depression and war that had all but rendered the highly industrialized community a musical wilderness.

"Under their conductor, Miss Cecile Vashaw, they captivated a Statler ballroom audience that could hardly have been more critical (and likewise sympathetic) in an hour's program that would have credited many a conservatory or community orchestra. They played Handel,

Mendelssohn, Vivaldi (the concertmistress soloing), and for moderns, the American Quincy Porter's *Music for Strings*, and Julia Smith's *Texas Idyle*, her *Folkways Symphony*.

"Their feat crowns a five-year plan operated hand-in-glove by the adult Toledo Orchestra and the Toledo public schools. In this period the adult orchestra has achieved a new stable basis of performance and support under the baton of Wolfgang Stresemann, and the schools have enjoyed a new dispensation at the hands of Miss Vashaw, instrumental supervisor and assistant to veteran Clarence Ball who heads the music department and had the vision to install a vigorous postwar program of instrumental instruction as fast as teachers become available."

—ALINE JEAN TREANOR, former music critic and arts editor, *The Toledo Blade*.



Cecile Vashaw, Maumee Valley Alumnae, with the Toledo Youth Orchestra

## A Visit to Sable-sur-Sarthe, THE MONKS OF SOLESMNES

△ VIRGINIA SHORT, a member of the Stockton Alumnae Chapter since her return in September of 1953 from a sabbatical year in Europe and the British Isles, has been a constant guest speaker before interested groups and classrooms, entralling them with her ability to recreate her experiences. Miss Short's accomplishments and experiences were numerous, devoting a major portion of her study on European architecture as a direct tie-in with her Stockton College and College of The Pacific classes in music history and music appreciation.

Miss Short shares one of her musical experiences with us in this article as she recalls her visit to Sable-sur-Sarthe in France.

"Yesterday we had a 200 mile ride clear across the Brittany Peninsula, from Concarneau on the sea to the Village of Sable-Sarthe near Angers. You are wondering why we came to this village. The pot of gold at the end of this rainbow was to hear the Monks of Solesmes sing the Gregorian Chant for which they are so famed. And to think I never would have known where this Benedictine Abbey was if it hadn't been for a timid suggestion made by the young French M.D. we met at the Edinburgh Festival.

"We arrived at the Abbey about quarter of 10. You go through a gate where there is a lay father in attendance and across a small garden into the Abbey Church. It is medium sized, rather narrow Romanesque architecture, and the

simplest Catholic church I have ever been in. The inside was a light grey stone—quite without decoration. The main altar was a simple wooden rail with some brownish velvet hanging behind it. The windows on the east side—the only ones—over the choir were simple glass for they let in the morning sunlight uncolored.

"As we entered I saw immediately that there was a casket—covered with black—standing just outside the first rail of the altar with six huge dark tan beeswax candles in big iron holders on the floor around it. I didn't know whether it was real—or whether that might have been a part of the contemplation on man's short life.

"Almost immediately the bell began to ring and then two young acolytes in white robes with monks'



Virginia Lanham Short

caps down the back, came in and lit the candles around the bier and six similar ones on the altar. And then came the monks. From the left side—entering in front of the altar rail, they came in pairs all in long black robes with the same pointed cap down the back (and all in rubber soles so it was almost soundless except for the swish of their robes.) Their heads were all shaven leaving the crown of their heads bare and they walked with fingertips together and up the rather long choir in pairs, and after a deep genuflection, separated and filled the rows of stalls on either side (we couldn't see any but part of the front row from where we sat). I tried my best to count—but I'm sure there were at least 70 of them.

"And then the chanting began. I don't know what it was—but it was something not in the book we were watching—at least not in that part. They sang the same short chant over and over in the most beautiful soft tone you can imagine. It was incredible to think that there were 70 men singing. I have never heard such a gentle release at the end of those descending phrases.

"And then from the right side the officiating clergy appeared. The two young men in white preceded them, then a monk in white with a black hood as first assistant and then the three priests. I have never seen such simple and yet such beautiful vestments. There was a design in embroidered orange and yellow on a black vestment worn over a white robe (and white hoods). The third priest had one in the center back. The second had two with long lines running the full length down the back and the priest who read the mass had the same emblem, large

and on a heavy center band. Just as the end of the service—before they came out to bless the dead, he was re-robed, and this second one had the design enclosed in a triangle, and the robe was lined with purple. But there was no gold and absolutely nothing ornate.

"After a few responses the real Mass started and at the beginning of the Kyrie about 10 monks came out from the stalls and stood in the center of the choir—right back of the altar and sang it. The larger group only coming in on the responses. They came forward each time for the special number.

"Imagine hearing that wonderful long *Dies Irae* sung by this group, and just as Father Boyle taught us—there were those beautiful crescendos on every rising phrase and a diminuendo on the descending one. And such purity of tone. At least half of the monks were old, too. But no cracked, quavering voices here. And the adjective I want to use over and over is *gentle*. It had an ethereal quality and one of grave reverence. But no tragedy in their tones ever, if the deceased was one of their number—as he must have been. There was dignity and great drama in the long, absolute silences. And then when the incense wafted straight up and across and through the bars of sunlight cutting across the chancel, it was like a prayer.

"At the close of the Mass proper they formed a procession and came out and stood around the bier for the blessing consecration of the body. The young priest we saw clearly then; he couldn't have been more than 35. This over, they marched out and so did we, into welcome, *warm* sunlight, after one of the thrills of my life."

## Registration Blank

Mu Phi Epsilon South Central Province Convention

Hotel Utah, Salt Lake City, Utah

June 22-26, 1954

Fill out and mail to

HELEN HUNTER RISER, Registrar

239 South Twelfth East, Salt Lake City, Utah

Applications should be in by May 31, 1954

Name .....	Business Delegate <input type="checkbox"/>
Address (after June 1).....	Music Delegate <input type="checkbox"/>
City .....	Visitor <input type="checkbox"/>
Chapter .....	
Day and Time of Arrival.....	
(Indicate—Transportation—Train, Bus, Plane, Car).....	
Day and Time of Departure.....	
Room Reservation..... (Preference of room mate)..... (Limited number of single rooms)	
Initiated in..... Chapter..... Date.....	
Conventions attended .....	
National Offices held.....	

## General Information—Visitors

**Accommodations**—Hotel Utah.

**Rates**—\$6.00 per day (two in room). Limited twin beds and singles.

**Registration Fee**—\$2.00.

**Expenses**—Meals—\$26.00, exclusive of breakfasts.  
\$52.00 will include Pre-Convention event, meals, and hotel room.

See next page for Pre-Convention information

## Pre-Convention

Pre- and Post-Convention events are not included in delegates entertainment. Advance reservations must be made for Monday evening's dinner at historic Lion House, 6:00 p.m., Monday, June 21, at \$2.00 per plate.

Fill out and Return by May 21, 1954

Return to Helen Hunter Riser  
239 South Twelfth East, Salt Lake City, Utah

### Monday Evening—June 21—Complimentary

University of Utah presents: "Journey of Promise," cantata by Gladys Rich, MΦE composer, and Faculty Concert at Kingsbury Hall at 8:30 p.m.

I EXPECT TO ATTEND THE DINNER. I ENCLOSE \$2.00

(make checks payable to Helen Hunter Riser).

NAME .....CHAPTER.....

DELEGATE.....VISITOR.....

I AM INTERESTED IN CITY TOURS (Please check).

MOUNTAIN & SKI RESORTS

COPPER MINES

GREAT SALT LAKE

Please arrange at registrar's desk on arrival for these trips.

# MΦE

# DIRECTORY

## Founders

DR. WINTHROP S. STERLING, *Died November 16, 1943*

ELIZABETH MATHIAS FUQUA (Mrs. JOHN W.), *Died May 17, 1950*

## Honorary Advisory Board

- |   |  |
|---|--|
| ELIZABETH MATHIAS FUQUA (Mrs. JOHN W.) (Deceased), <i>Alpha</i> 1904-05, 07, 08               | AUGUST, JR.), 3426 Morrison Place, Clifton, Cincinnati, Ohio, <i>Alpha</i> 1926-28   |
| MYRTAL PALMER LEACH (Mrs. FRANK), 2 Messervy St., Salem, Mass., <i>Gamma</i> 1905-07          | ORAH ASHLEY LAMKE (Mrs. GEORGE W.), 1327 McCutcheon Road, Richmond Heights 17, Mo., <i>Delta</i> 1928-30   |
| ELFRIDA LANGLOIS KENT (Deceased), <i>Delta</i> 1908-11  | BERTHA M. (KING) VAN TILBURG (Mrs. V. B.), 1901 Alessandra Trail, Vista, Calif., <i>Mu Epsilon</i> 1930-32, 34-40                                |
| ALICE DAVIS BRADFORD PECK (Mrs. ARTHUR), 40 Wilmoth Ave., Wyoming, Ohio, <i>Alpha</i> 1911-13 | DOROTHY ELIZABETH PATON, Observatory Lodge, Apt. 304, 1402 Washington Heights, Ann Arbor, Mich., <i>Gamma</i> 1932-34                            |
| ORA BETHUNE JOHNSON (Mrs. J. F.) (Deceased), <i>Theta</i> 1913-15                             | ELIZABETH AYRES KIDD (Mrs. A. EUGENE, JR.), New Trier High School, Winnetka, Ill., <i>Mu Xi</i> 1940-42  |
| MARY TOWSLEY PFAU (Mrs. WILLIAM) (Deceased), <i>Alpha</i> 1915-16                             | AVA COMIN CASE (Mrs. LEE O.), School of Music, University of Michigan, Ann Arbor, Mich., <i>Gamma</i> 1942-48                                    |
| ROXIELETTIE TAYLOR YEATES (Mrs. JOHN), 1119 Rumsey Ave., Cody, Wyoming, <i>Theta</i> 1916-17  | MARGARETTE WIBLE WALKER, 2310 Scarff St., Los Angeles 7, Calif., <i>Mu Nu</i> 1948-50  |
| HARRIET THOMPSON WRIGHT (Mrs. WILLIAM E), 482 Glen Ave., Fresno, Calif., <i>Chi</i> 1917-20   | ANCELLA M. FOX (Mrs. O. S.), (Deceased), <i>Iota Alpha</i> (Elected Honorary Life Member of Honorary Advisory Board at 1920 National Convention) |
| DORIS BENSON (Mrs. WALTER), Spikeswood Farm, Woodruff, Wisc., <i>Iota Alpha</i> 1920-22       |  |
| PERSIS HEATON TRIMBLE (Mrs. CHARLES M.) (Deceased), <i>Mu Alpha</i> 1922-26                   |  |
| LUCILLE EILERS BRETTSCHEIDER (Mrs.  |  |

## National Council—1952-1954

- |   |  |
|---|--|
| <i>National President</i> —RUTH ROW CLUTCHER (Mrs. JOHN), <i>Omicron</i> , 21 Kent Road, Upper Darby, Penna.                            | TOR N.), <i>Phi Pi</i> , 6136 E. Harry St., Wichita 17, Kans.  |
| <i>National First Vice President</i> —ELEANOR E. HALE WILSON (Mrs. P. RAYMOND), <i>Tau</i> , 2800 39th Ave. West., Seattle 99, Wash.    | <i>National Fourth Vice President</i> —GERTRUDE OTTO, <i>Theta</i> , 120 West 70th St., New York 23, N. Y.                               |
| <i>National Second Vice President</i> —ELVA B. McMULLEN GAMBLE (Mrs. EUGENE E.), <i>Xi</i> , 9333 South Hamilton Ave., Chicago 20, Ill. | <i>National Editor</i> —RUTH HAVLIK, <i>Phi Rho</i> , 1122 Adams St. N.E., Minneapolis 13, Minn.   |
| <i>National Third Vice President</i> —WANDA M. ANDERSON BURKETT (Mrs. VIC-  | <i>National Executive Secretary-Treasurer</i> —BERNICE S. OECHSLER (Mrs. RALPH J.), <i>Epsilon</i> , 6604 Maplewood Ave., Sylvania, Ohio |
| <b>NATIONAL EXECUTIVE OFFICE</b> —6604 Maplewood Ave., Sylvania, Ohio.  |  |



# National Departments

## ALUMNAE BOARD

Alumnae Adviser—NATIONAL THIRD VICE PRESIDENT

*Atlantic Province*—MARY L. COLTRANE HILL (MRS. GUY R.), 4329 Verplanck Place, Washington 16, D. C. MILDRED CLEMONS BOWKER (MRS. EVERETT M.), 143 Fairway Road, Chestnut Hill, Mass.

*Great Lakes Province*—GRACE LOUISE SEIBERLING, 2006 Harrison St., Apt. 2, Evanston, Ill. NORMA SCHELLING EMMERT (MRS. GEO. G.), 2906 Pembroke Road, Toledo 6, Ohio.

*East Central Province*—HELEN V. DICKEY, 188 Grandview Ave., Conneaut Ohio. ELLEN K. GOODIN GRAF (MRS. HORACE), 334 Tuxedo Blvd., Webster Groves 19, Mo.

*North Central Province*—BERNICE M. BONESTEEL, 4001 Old Marion Road, Cedar Rapids, Iowa. ALICE HUSSONG BIEBERSTEIN (MRS. PAUL C.), 1549 South 23rd St., Lincoln, Nebr.

*South Central Province*—ETHEL WILKINS NICHOLAS (MRS. KENNETH), 2236 Forest, Denver, Colo. JOSEPHINE H. QUINN MILLER (MRS. NORMAN H.), 1729 So. Baltimore, Tulsa 5.

*Pacific Province*—VERA P. HULSE EUBANK (MRS. JAMES), 15047 Marble Drive, Sherman Oaks, Calif. RUTH V. SAMPSON AYERS (MRS. STEPHEN E.), East 1003 20th, Spokane, Wash.

## EDITORIAL BOARD

Advisor—NATIONAL EDITOR

*Atlantic Province*—HELEN C. ROTHRA, Active Representative, 424 University Ave., Rochester 7, N. Y. ELIZABETH STORER BOTHWELL (MRS. W. G.), Alumnae Representative, 316 Beech St., Pittsburgh 21.

*Great Lakes Province*—COLLETTE V. SALON, Active Representative, 25120 West Roycourt, Huntington Woods, Mich. VIOLA PETERSON, Alumnae Representative, 3384 Berkeley Road, Cleveland Heights 18, Ohio.

*East Central Province*—PEGGY PENNEL, Active Representative, Sibley Hall, Lindenwood College, St. Charles, Mo. FRANCES COLLINS VANDERBILT (MRS.

DONALD B.), Alumnae Representative, 1411 East 77th St., Indianapolis 20, Ind.

*North Central Province*—LAREE MCNEAL, Active Representative, Fjelstad Hall, Concordia College, Moorhead, Minn.

*South Central Province*—KATHARINE JANE NELLIGAN, Active Representative, 1630 Oxford Road, Lawrence, Kansas.

*Pacific Province*—RUTH FREEMAN, Active Representative, 1717 E. 47th St., Seattle 5. ESTHER BEER FUNK (MRS. ROLAND), Alumnae Representative, 251 So. McCarty Drive, Beverly Hills, Calif.

## DISTRICT CONFERENCES

Chairman—SARAH A. VANCE KILGOUR (MRS. RAYMOND L.), 513 Oswego Ave. Ann Arbor, Mich.

## FINANCE

*Great Lakes Province*—DOROTHY E. PATON, Chairman, Apt. 304 Observatory Lodge, 1402 Washington Heights, Ann Arbor, Mich.

*Atlantic Province*—KATHARINE SHIRLEY, 21 Kent Road, Upper Darby, Penna.

*East Central Province*—EDNA S. VER

HAAR DEAGON (MRS. STANLEY), 2208 West 56th St., Kansas City 2, Mo.

*North Central Province*—HELEN MELAAS CANINE (MRS. WILLARD JR.), Box 151, Glidden, Iowa.

*Pacific Province*—CAROLYN M. A. REED TRAVIS (MRS. JOHN A.), 9639 Bridgeport Way, S.W., Tacoma, Wash.

## INTERNATIONAL MUSIC RELATIONS

Chairman—BERNICE AUSTIN HUESTIS (MRS. R. A.), 3832 Kirkwood Road, Cleveland Heights, Ohio

## MAGAZINE SUBSCRIPTION AGENCY BOARD

Chairman—HELEN MCKIE RAMAGE (MRS. JOHN), 15724 Turner St., Detroit, 21, Mich.

*Atlantic Province*—MARGARET H. JOHNSON DANNALS (MRS. LELAND E.), 41 Cooke St., Waterbury, Conn.

*Great Lakes Province*—ILLINOIS DIVISION—ALMIRA LINDGREN SNYDER (MRS. K.), 1091 Pflugsten Road, Northbrook, Ill.; ANN ARBOR DIVISION—LUCY K. SELDEN MILLER (MRS. MARTIN A.), 12860 W. Ten Mile Road, South Lyons, Mich.; OHIO DIVISION—DOROTHY E. OLDHAM DUBLO (MRS. A. J.), 301 Herrick Ave. East, Wellington, Ohio.

*East Central Province*—INDIANA DIVISION—MARY MOORMAN, 47 Bankers Lane, Apt. B, Indianapolis 1, Ind.; MISSOURI DIVISION—LUCILLE M.

COOK GEWINNER (MRS. JULES), 500 Crofton Ave., Webster Groves 19, Mo.

*North Central Province*—GWENDOLYN KIRK WELLS (MRS. RALPH B.), 2508 47th St., Des Moines, Iowa.

*South Central Province*—VALERIE FOSQUE (MRS. A. W., JR.), 3300 Milton, Dallas 5, Texas.

*Pacific Province*—NORTHERN DIVISION—LOIS V. ANDERSON HARPER (MRS. GLENN H.), 8418 So. 134th St., Seattle 88, Wash.; SAN FRANCISCO DIVISION—SUE JONES CAMPBELL (MRS. BRUCE J.), 530 Fairfax Ave., San Mateo, Calif.; LOS ANGELES DIVISION—EVAMARIA MORITZ LANNING (MRS. EDGAR), 3819 Westwood Boulevard, Culver City, Calif.

## MU PHI EPSILON SCHOOL OF MUSIC AT GADS HILL CENTER

1919 West Cullerton, Chicago, Ill.

Director—WINNIFRID R. ERICKSON, 1951 West Schiller St., Chicago 22, Ill.

Treasurer—ALMA E. GRAMBAUER, 1380 Henry St., Des Plaines, Ill.

Representative on Settlement Board—

MARIE MUELLER WALLERICH (MRS. GEORGE W.), 511 Forest Ave., Oak Park, Ill.

Publicity Chairman—RUTH E. EARHART WERCHMAN (MRS. JOHN), 725 So. Ashland Blvd., Chicago 7, Ill.

## MUSIC IN HOSPITALS AND MUSIC THERAPY

Chairman—VIOLA MOEN ANDERSON (MRS. HENRY O.), 1038 1st St. North, Fargo, N. D.

## 1954 CONVENTION

Chairman—LUNA CHIPMAN WOOTTON (MRS. J. TRACEY), 1650 Kensington Ave., Salt Lake City 5, Utah

## PUBLIC RELATIONS BOARD

Advisor—NATIONAL FOURTH VICE PRESIDENT

JOANNE JOHNSON BAKER (MRS. RUSSELL W.), 417 W. 59th Terrace, Kansas City 2, Mo.; BEATRICE MACCUE (MRS. HUGH COSGROVE), 5 Patsy Place, Great Neck Village, L. I., N. Y.; PHYLLIS ANN MURPHY, 801 South Wright, Cham-

paign, Ill.; KAY SWINNEY NEWMAN (MRS. HAL C.), 4805 South Lindhurst, Dallas, Texas; MARILYN JEAN NORMAN (MRS. CARL W.), 3229 Buchanan St. N.E., Minneapolis 18, Minn.

## RITUAL

Chairman—ADELE REEVES RATCLIFFE (MRS. KENT E.), 3700 Cascadia, Seattle 44, Wash.

## SCHOLARSHIPS

Chairman—HELEN CHUTE DILL, 339 Reeves Drive, Beverly Hills, Calif.

## STERLING-MATHIAS MEMORIAL

Chairman, Sterling-Mathias Memorial Fund—HILDUR LAVINE SHAW (MRS. WM. S.), 1319 9th St. So., Fargo, N. D.

Chairman, Sterling-Mathias Memorial—AVA COMIN CASE (MRS. LEE O.), School of Music, Univ. of Michigan, Ann Arbor, Mich.

# Official Insignia

Manufactured and  
Guaranteed  
by Balfour

Your badge is a beautiful symbol of your membership and a lifetime investment. As your official jeweler, Balfour pledges highest quality, friendly service, and a sincere desire to please.

### PRICE LIST

Plain badge .....	\$5.00
Close set pearl badge.....	10.00
Crown set pearl badge.....	15.00
Crown set pearl, three diamonds.....	39.00
Recognition pin, 10K gold.....	1.75
Pledge pin, sterling.....	.75
Patron or Patroness Pins:	
Nugget border.....	4.00
Crown set pearl.....	13.50
Close set pearl.....	10.75

Write for your complete price list.

10 per cent Federal Tax and any State Tax are in addition.

Orders for official insignia should be placed with Mu Phi Epsilon National Executive Office.

L. G. Balfour Company .... date  
Attleboro, Mass.

Please send:                      Samples:

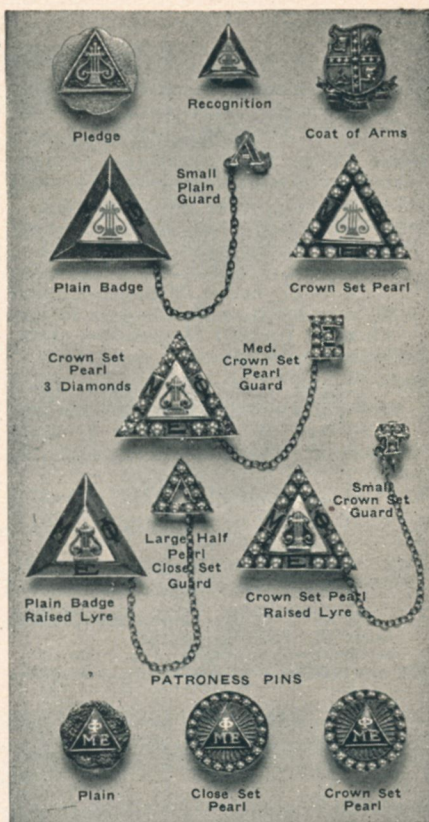
- |   |                                      |
|---|--------------------------------------|
| <input type="checkbox"/> Blue Book        | <input type="checkbox"/> Stationery  |
| <input type="checkbox"/> Ceramic Flyers   | <input type="checkbox"/> Invitations |
| <input type="checkbox"/> Badge Price List | <input type="checkbox"/> Programs    |

Name .....

.....

.....

MΦE



## New Edition 1954 BALFOUR BLUE BOOK

A complete catalog featuring new party favors and gifts—rings, bracelets, cuff links, jewel cases, mother of pearl gifts.

Mail coupon for free copy.

L. G. *Balfour*  
COMPANY  
Attleboro, Massachusetts

In Canada . . . Contact your nearest  
BIRKS' STORE.

Alumnae  
Chapters

# 1953-54 CALENDAR

**SEPTEMBER**—President: Call meeting of chapter officers to make plans for year. Corresponding Secretary. Report any changes in names and addresses of chapter officers to NEO. Also order supplies for the year from NEO, enclosing check and remittance sheet secured from Chapter Treasurer.

**SEPTEMBER 10**—Historian: All material for inclusion in November TRIANGLE must be in the Office of the National Editor.

**OCTOBER 15**—Treasurer and Corresponding Secretary: Prepare and send to NEO fall membership list on official forms, check with remittance sheet to cover fall per capita taxes (\$.75 per member), Convention taxes (\$1.25 per member—alumnae chapters only pay this tax), and subscriptions to the TRIANGLE for all annual subscribers (\$1.00 per year).

**NOVEMBER 13**—Founders' Day. Golden Anniversary.

Treasurer: Send to NEO, with remittance sheet, check for Founders' Day Fund—your voluntary contribution of 50 pennies per member.

**NOVEMBER 15**—Historian: Deadline for material for January TRIANGLE.

**DECEMBER 1**—President: Write fall report-letter to National Third Vice President.

**JANUARY 10**—Historian: Deadline for material for March TRIANGLE.

**MARCH 1**—Closing date for entries in Mu Phi Epsilon Song Contest for 1954.


**MARCH 10**—Historian: Deadline for material for May TRIANGLE, Convention glossy, and biographical sketch.

**MARCH 15**—Treasurer and Corresponding Secretary: Prepare and send to NEO spring membership list on official forms, check with remittance sheet to cover spring per capita taxes (\$.75 per member), Convention taxes (\$1.25 per member—Alumnae Chapters only), and subscriptions to TRIANGLE for annual subscribers not reported on November 15 membership list (\$1.00 per year).

**APRIL 15**—President: Write spring report-letter to National Third Vice President.

**JUNE 1**—President, Treasurer and Corresponding Secretary: Send annual reports to NEO on official forms.

The  
Mu Phi Epsilon  
Creed

 BELIEVE in Music, the noblest of all the arts, a source of much that is good, just, and beautiful; in Friendship, marked by love, kindness, and sincerity; and in Harmony, the essence of a true and happy life. I believe in the sacred bond of Sisterhood, loyal, generous and self-sacrificing, and its strength shall ever guide me in the path that leads upward toward the stars.

—RUTH JANE KIRBY, Omega