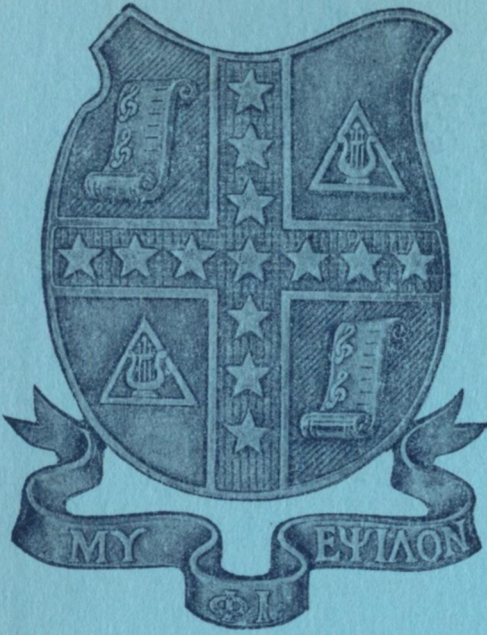


4, 50 # 4



The

Triangle

of Mu Phi Epsilon

May, 1956

1955-56
Calendar

ACTIVE CHAPTERS

FIRST WEEK OF SCHOOL: PRESIDENT: Call meeting of chapter officers to inspect chapter equipment, discuss fall materials received from NEO, and make plans for year.

CORRESPONDING SECRETARY: Report to NEO any changes in name and address of chapter officers; order supplies for the year from NEO, enclosing remittance sheet and check made payable to: MU PHI EPSILON.

SEPTEMBER 10: HISTORIAN: All material for the November TRIANGLE, other than newsletter, must be in the office of the National Editor. New address of National Editor: 532 S.E. Fifth St., Apt. A, Minneapolis 14, Minn.

NOVEMBER 10: HISTORIAN: Deadline for material for January TRIANGLE. Send newsletter either November 10th or January 10th.

NOVEMBER 13: FOUNDERS DAY: TREASURER: Send to NEO, with remittance sheet, check made payable to: MU PHI EPSILON, for Founders Day Pennies—your contribution of 52 pennies per member.

NOVEMBER 15: TREASURER and CORRESPONDING SECRETARY: Prepare and send to NEO fall membership list on official forms, with remittance sheet and check made payable to: MU PHI EPSILON, to cover fall per capita tax (\$1.50 per member), convention taxes (\$1.25 per member), and TRIANGLE subscriptions for annual subscribers (\$1.50 per year).

DECEMBER 1: PRESIDENT: Write fall report-letter to your Province Governor, concerning chapter activities and problems.

JANUARY 10: HISTORIAN: Required newsletter due at office of National Editor (if not sent November 10th). Deadline for all other material for March TRIANGLE.

FIRST MONTH OF SECOND SEMESTER, BUT NOT LATER THAN FEBRUARY 28: PRESIDENT: Hold election of new officers, who will be installed in office in March.

CORRESPONDING SECRETARY: Report names and addresses of new chapter officers to NEO, using official form.

MARCH 10: HISTORIAN: Deadline for glossy and biographical sketch of convention delegate(s) to be sent to National Editor, and any other material for May TRIANGLE.

APRIL 1: PRESIDENT: Write spring report-letter to your Province Governor.

APRIL 15: TREASURER and CORRESPONDING SECRETARY: Prepare and send to NEO spring membership list on official forms, with remittance sheet and check made payable to: MU PHI EPSILON, to cover spring per capita tax (\$1.50 per member), convention tax (\$1.25 per member), and TRIANGLE subscriptions for annual subscribers (\$1.50 per year) not reported on November 15th list.

JUNE 1: PRESIDENT, TREASURER, and CORRESPONDING SECRETARY: Send annual reports to NEO on official forms.

The Triangle of Mu Phi Epsilon

May • 1956

Contents

	Page
Your Convention Invitation from National Council.....	2
Come to Rochester, the Flower City.....	4
Schedule of Events.....	5
Chapter Assignments	6
Among Notables to Be Heard.....	7
Music for the Philippines.....	9
Omeegas in Europe.....	10
More MΦE Mothers and Daughters.....	13
Chapter Sforzando	17
The Pride of MΦE.....	21
We Salute Eugene Alumnae MΦE Husbands.....	25
On Campus	26
Convention Delegates	29
Music Delegates	29
Business Delegates	35
Notes About Mu Phi.....	66
In Memoriam	72
Statistically Speaking	73
Convention Registration Blank.....	75
Pre-Convention Registration Blank.....	76
Mu Phi Epsilon Directory.....	77

Ruth Haulik, Editor

THE TRIANGLE of Mu Phi Epsilon is published five times yearly, the first of September November, January, March, and May, at 2642 University Ave., Saint Paul, Minn., by Leland Publishers, Incorporated (The Fraternity Press), for Mu Phi Epsilon, National Music Sorority. The subscription price is \$1.50 per year. Deadlines for copy: Materials for publication must reach the Editor, 532 S.E. Fifth St., Apt. A, Minneapolis 14, Minn., before the 10th of September, January, March, and November. Entered as second class matter at the postoffice at Saint Paul, Minn., under the act of March 5, 1879.

POSTMASTER: Send all changes of address to 6604 Maplewood Ave., Sylvania, Ohio.

VOLUME 50

NUMBER 4





*Eleanor Hale Wilson
National President*



*Rosalie Speciale
National First Vice President*



*Norma Lee Madsen
National Second Vice President*



*Pauline James Baker
National Third Vice President*

Your Convention



*Elizabeth Storer Bothwell
National Fourth Vice President*

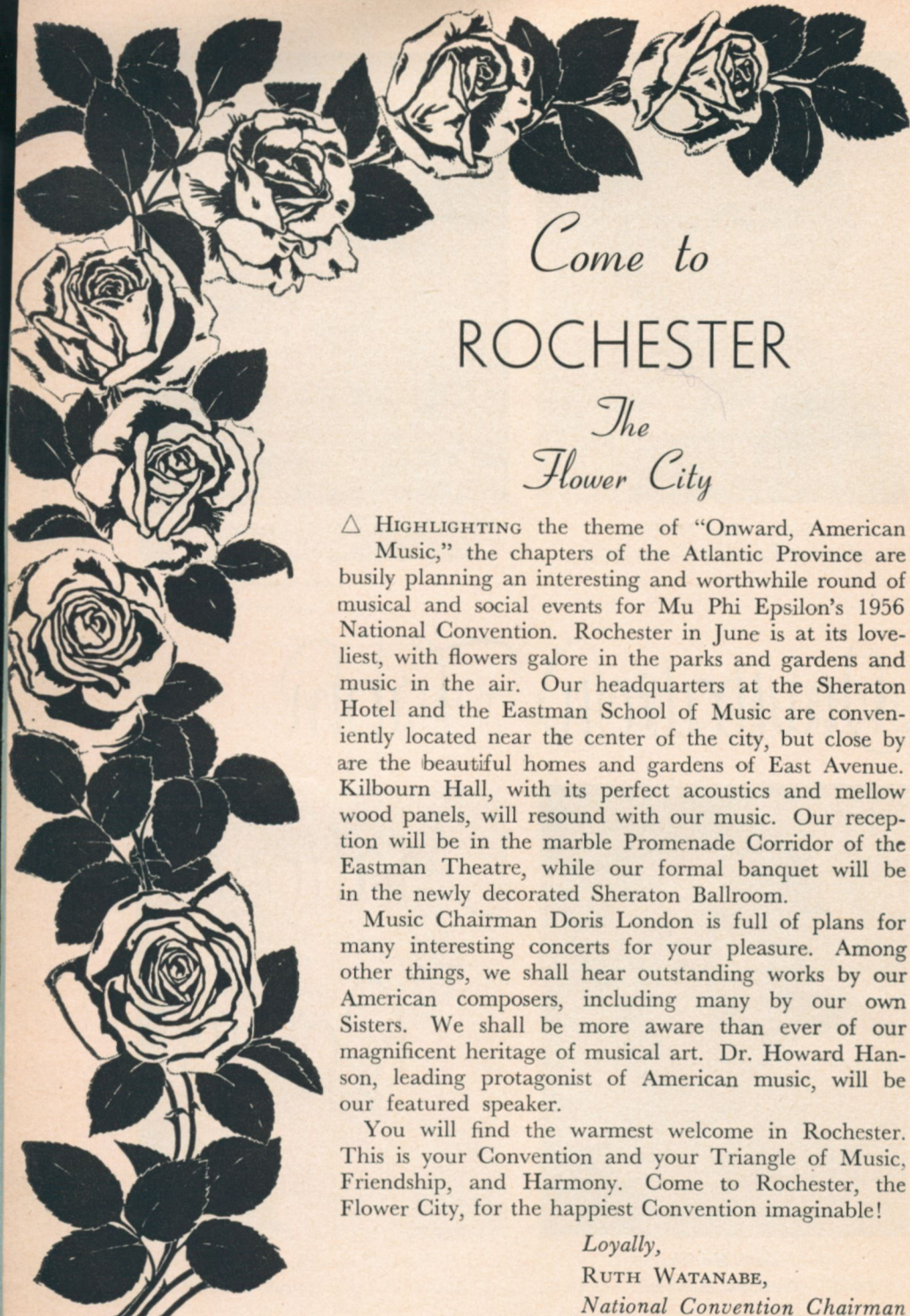


*Bernice Swisher Oechsler
National Executive Secretary-Treasurer*



*Ruth Havlik
National Editor*

Invitation From National Council



Come to
ROCHESTER
The
Flower City

△ HIGHLIGHTING the theme of "Onward, American Music," the chapters of the Atlantic Province are busily planning an interesting and worthwhile round of musical and social events for Mu Phi Epsilon's 1956 National Convention. Rochester in June is at its loveliest, with flowers galore in the parks and gardens and music in the air. Our headquarters at the Sheraton Hotel and the Eastman School of Music are conveniently located near the center of the city, but close by are the beautiful homes and gardens of East Avenue. Kilbourn Hall, with its perfect acoustics and mellow wood panels, will resound with our music. Our reception will be in the marble Promenade Corridor of the Eastman Theatre, while our formal banquet will be in the newly decorated Sheraton Ballroom.

Music Chairman Doris London is full of plans for many interesting concerts for your pleasure. Among other things, we shall hear outstanding works by our American composers, including many by our own Sisters. We shall be more aware than ever of our magnificent heritage of musical art. Dr. Howard Hanson, leading protagonist of American music, will be our featured speaker.

You will find the warmest welcome in Rochester. This is your Convention and your Triangle of Music, Friendship, and Harmony. Come to Rochester, the Flower City, for the happiest Convention imaginable!

Loyally,
 RUTH WATANABE,
National Convention Chairman

Schedule of Events

... Monday, June 18 ...

Registration for early-comers. *Sheraton Mezzanine lobby*
 6:30 Buffet Supper. *Hutchison House*
 8:15 Photographic Museum Tour, Movie. *Eastman House*

... Tuesday, June 19 ...

7:30- 9:15 Registration. *Sheraton Mezzanine*
 8:30- 9:15 Committee Meetings. *Suites* (to be designated)
 9:30-12:00 Opening Session. *Roof meeting room, Sheraton*
 12:30- 2:00 Luncheon. *Roof dining room, Sheraton*
 2:15- 4:00 Afternoon Session. *Roof meeting room*
 4:15- 4:45 Memorial Service. *Roof meeting room*
 4:45- 5:30 Nominating Committee. *Parlors* (to be designated)
 6:00- 8:00 Dinner. *Roof dining room*
 8:30- Active Chapters Concert. *Kilbourn Hall, Eastman School*

... Wednesday, June 20 ...

8:00- 9:00 Instruction. *Roof meeting room*
 9:00-10:30 Business Session. *Roof meeting room*
 10:30-12:00 Round Table. *To be designated*
 12:30- 2:00 Luncheon. *Roof dining room*
 2:15- 3:45 Composers Concert. *Kilbourn Hall*
 4:30- 5:00 Model Initiation. *Kilbourn Hall*
 5:00- 5:30 District Meetings. *Suites* (to be designated)
 6:15- 8:15 Dinner. *Rochester Club*
 8:30-10:00 Alumnae Concert. *Kilbourn Hall*
 10:15- Reception for Council. *Promenade Corridor, Eastman*

... Thursday, June 21 ...

8:00- 9:00 Instruction. *Roof meeting room*
 9:15-11:00 Business Session. *Roof meeting room*
 11:00-12:00 Round Table. *To be designated*
 12:30- 2:00 Luncheon. *Roof dining room*
 2:15- 3:00 Business Session. *Roof meeting room*

3:00- 4:00	Discussion Groups.	{ <i>Sheraton Room</i> { <i>Victorian Room</i> { <i>Starlite Roof</i> { <i>Bamboo Room</i> { <i>Sagamore Room</i>
4:00- 5:00	Province Meetings.	{ <i>Victorian Room</i> { <i>Starlite Roof</i> { <i>Tent Room</i>

5:00- 6:00 Films. *To be designated*
 7:00- Banquet. *Sheraton Ballroom*

... Friday, June 22 ...

8:00- 9:00 Voting. *Roof meeting room*
 9:15-11:30 Business Session and Installation. *Roof meeting room*
 11:30- Brunch. *Sheraton*

Chapter Assignments

LUNCHEON, TUESDAY, JUNE 19.

"Welcome to Convention." Chaired by the Rochester Alumnae Chapter.

DINNER, TUESDAY, JUNE 19.

Chaired by Washington Alumnae Chapter.

Speaker: Mr. Richard Bales, Director of Music at the National Gallery in Washington.

LUNCHEON, WEDNESDAY, JUNE 20.

Chaired by the Philadelphia Alumnae Chapter. Pennsylvania Dutch theme.

DINNER, WEDNESDAY, JUNE 20

Chaired by New York Alumnae Chapter.

Speaker: Dr. Sigmund Spaeth.

"STEPHEN FOSTER" LUNCHEON, THURSDAY, JUNE 21

Chaired by Pittsburgh Alumnae Chapter.

Banquet: Boston Chapters



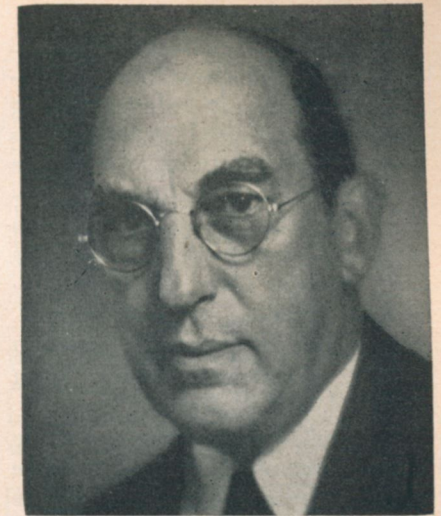
Air View of Rochester Memorial Bridge

Dr. Sigmund Spaeth, 'America's Tune Detective,' Is To Speak at Dinner On June 20

△ DR. SIGMUND SPAETH, president of the Louis Braille Music Institute, has been called "America's most popular speaker and writer on music." Recently, he became editor-in-chief of the widely read magazine, *Music Journal*, and his weekly column, "Music for Everybody," now appears in a number of newspapers all over the United States.

Eugene Ormandy, conductor of the Philadelphia Orchestra, declares that Sigmund Spaeth "has done as much as any man living (or perhaps in all history) to bring good music to a mass audience." To his books, magazine articles, broadcasts, and motion pictures, Dr. Spaeth has now added a series of half-hour television programs on film.

He has been for 16 years a regular member of the Metropolitan Opera Quiz and was for 9 years president of the National Association for American Composers and Conductors and a member of ASCAP since 1925. He has won the Henry Hadley Medal for "distinguished services to American music and citations from the Army, the Red Cross, and the Treasury Department for his wartime activities. Recently he was the recipient of tributes from NFMC and the Louis Braille Music Institute on his completion of fifty



Dr. Sigmund Spaeth

years in music. Known as the world's leading "Tune Detective," Sigmund Spaeth appears in court to testify in plagiarism and infringement suits concerning musical copyrights.

European Acclaimed Claudette Sorel Is to Be Pianist At Banquet, June 21

△ CLAUDETTE SOREL, just returned from her first and notably successful concert tour in Europe, will be our soloist at the final banquet. This young and gifted sister in MΦE is already a veteran of three New York recitals and 30 guest performances with orchestras including the New York Philharmonic, The Little Orchestra Society, the Philadelphia,

Among Notables to be Heard

Cincinnati, New Orleans, and NBC Symphony Orchestras. She has appeared in recital in countless leading cities of the United States and has appeared at the Aspen Festival, the Berkshire Festival and the Chautauqua Musical Festival. Born in France, Claudette has studied in this country with Olga Samaroff Stokowski, Serkin, and Horszowski. She is also the youngest musician ever to receive the NFMC Young Artists Award (1951).

The following excerpts from the critics' comments abroad describe the enthusiasm with which the press and the public received her in the tour just completed: "A delightful phenomenon among young American pianists visiting Europe, is Claudette Sorel, who in the large hall of the Volksbildungsheim captured us with all the advantages of a fresh, gracefully light, and very precise piano playing. With skillful musical spirituality, she reproduced the style of all compositions from Beethoven to Rachmaninoff. Rousing applause rewarded her." (*Frankfurter Abendpost*); CONCERT IN MUNICH (headline): "She performed Beethoven, Brahms, Chopin—here more the vigorous, the chivalrous, and the effervescent than the lyric-sentimental—and finally she glittered with the virtuoso pieces of Scriabin, Rachmaninoff, and Prokofieff" (*Munchner Merkur*); 146TH ANNIVERSARY OF CHOPIN (headline): "We have to admit that the usually cold British public received this time with great enthusiasm the *Sonata in B minor*, Op. 58, which Miss Sorel performed like a master." (*The Polish Daily and Soldiers Daily* in London). "One of the best piano recitals in Wigmore Hall



Claudette Sorel

in London was the concert of the very young Claudette Sorel who gave a rich program, every composition performed in its individual style and color of tone. . . . There was no end to the bravos and curtain calls." (*Narodowiec*—Democratic Polish Newspaper printed in Paris.) "Miss Sorel's scarlet dress emphasized visually the Amazonian tenacity by which she tackled these exacting sonatas. She possesses an indisputable sense of music together with a blameless technical skill and brilliant style. . . . All told, absolutely an agreeable acquaintance." (*Stockholm Morgon Tidningen*.)

Claudette has already been invited back to Europe next season and has our continued best wishes.



Eastman's Kilbourn Hall

"Reams of Praises on Our Efforts in Music for the Philippines"

△ THESE WORDS, contained in a letter Adelaide Spurgin received recently from Mimi Palmore, give further emphasis and impetus to the worthwhileness of our International Relations Directive. The accompanying program and the picture of its participants can be of real interest to all chapters.

not of special interest to Mu Phi Epsilon until they know that the music on the recital was all sent in MΦE boxes at some time during the year—and the violin Mr. Lopez played is the one sent by the Philadelphia Alumnae. . . . It was our first evening back on the campus, the recital was lovely, and to find at the end



Zoe Lopez, violinist
Albert Faurot, pianist

Mimi described this recital: "When we arrived on the campus on the morning of Sept. 30, 1955, we received an invitation to a music recital—one of the regular faculty recitals held during the school year—for that evening. So we went. I am enclosing a program of that recital and a picture of the performing artists taken at the end of the recital. These in themselves are

of it that all the music and even the violin had come from my Mu Phi sisters made my heart swell with pride. . . . So much excellent music has come! Some brand new music. The organ music has given us a wonderful library. It's my privilege to train organists for the church, so I am particularly grateful for things sent for organ. The University orchestra is using music from Mu

SILLIMAN UNIVERSITY	
SCHOOL OF MUSIC	
presents	
ZOE LOPEZ, Violinist	
ALBERT FAUROT, Pianist	
Beethoven	Sonata in A, Op. 12, No. 2
Allegro vivace	
Andante, piu tosto Allegretto	
Allegro piacevole	
Franch	Sonata in A
Allegro ben moderato	
Allegro	
Recitativo-Fantasia	
Allegretto poco mosso	
Joaquin Nin	Songs from Spain
Montañesa (Castilian Mountain Song)	
Tonada Murciana (Song from Murcia)	
Saeta (Andalusian religious song, sung in Holy week Processions)	
Granadina (Andalusian Song and Dance)	
at the Faurot Studio	
Friday, Sept. 30, 1955, 7:30 p.m.	

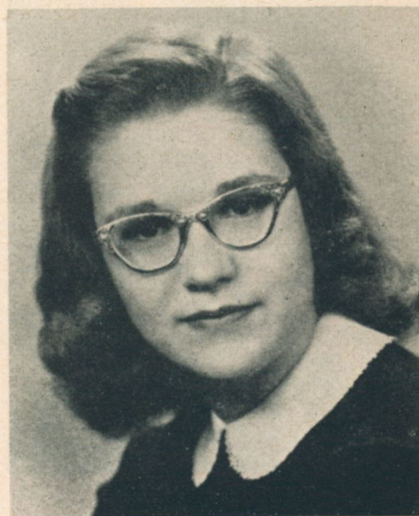
Phis. . . the piano and violin and voice students at last have unlimited choice for their new pieces . . . the sacred music sent for solos and choir has been most gratefully received. Copies of anthems which are in excess of our need here on the campus have been given to graduate students who are in turn training choirs in other towns on other islands. . . . My husband just came home from the office this afternoon

to tell me that another box of music had arrived. Each one is like a Christmas gift from Mu Phis to Filipino music students, and I do wish that each one of you could be here to see the good you are doing. . . . My personal thanks for the privilege of being your agent in distributing this music." Thus one opportunity opens many more to make for a constantly enlarging sphere for service through music.

OMEGAS *in Europe*

△ ALTHOUGH Miriam Bierbaum and Marianne Schneider were with two entirely different groups and Marianne had been a Fulbrighter in Germany almost a year, the two girls met for a brief and happy reunion last summer. The following are their impressions of the countries they visited, the people they met, the music they heard and "made." Miriam writes:

First, perhaps I should explain a little about the type and purpose of the group with which I traveled. Our group consisted of 20 students, representing almost 20 states, and the respective Lutheran student groups from that many colleges and universities. Arrangements and plans for the tour were made by European representatives of an international ecumenical organization—the Lutheran World Federation. Our purpose was to observe the religious, social, political, and academic life as we found it in the various European countries, in an effort to gain a better understanding of the problems of these people. The major portion of our time as a group was concentrated in two countries—Norway and Germany. At intervals throughout the summer, however, we had sufficient free time to do the other independent traveling that we wished to do.



Miriam Bierbaum

After meeting a few days early in New York City for sight-seeing and getting acquainted, we left Idlewild Airport on June 13 for Oslo, Norway, making stops in Labrador and Iceland. The greater part of our month's stay in Norway was spent in Oslo and Bergen, often with Norwegian families or students; and in touring by bus and train the mountainous northern regions of the country. Thus we could actually become quite well acquainted with the people of the country, in addition to

seeing more than the usual tourist attractions.

Due to the nature of our group we often began each day's activities with a chanted Matins service at a convenient cathedral, or by contrast, a nearby village chapel. Being one of the two people in the group with a professional interest in music, I therefore had many opportunities to play church organs of all descriptions. The Norwegian church musicians were quite eager to have us become acquainted with their particular instruments, and the church and national music programs. One of the most interesting instruments we saw was a comparatively new, very small baroque organ, all the pipes of which were square



Marianne Schneider

and constructed of rather lightweight wood. It was installed in a tiny rural stave church dating from the 13th century, and also built entirely of wood, thereby preserving the completely harmonious effect.

While in Bergen, although it was not the concert season, we did spend an evening at the home of the concert-mas-

ter of the Bergen Symphony Orchestra, with the opportunity to enjoy some informal chamber music. We also attended a sacred music concert in one of the relatively new churches in the city, and heard organ and vocal works of Buxtehude, Schutz, Bach, and Distler. Another music highlight in Norway was our visit to the home of Edward Grieg, and hearing there a short concert of Grieg's music on Grieg's own flygel.

After visiting Sweden and Denmark we arrived in Germany for our second month of travel. We toured three weeks by bus, staying most often in cities or towns containing the leading universities. This gave us an opportunity to hear some of the choral and instrumental groups at the university level, as well as many fine organists. We also visited the birthplace and home of Beethoven while at the University of Bonn. While in Munich we attended a concert by the St. Olaf Choir from Northfield, Minn., a rather unusual place, it seemed to us, to hear a fellow American touring group. A definite high spot of the week we spent in Berlin was the visit to the West Berlin State Opera House to hear an evening performance of Puccini's *La Boheme*.

When thinking back over our last two weeks of independent travel in Belgium, The Netherlands, England, France, Switzerland, Italy, and Austria, the events of musical interest which come to mind first are: the magnificent organ, and choirs, particularly the tenor section, in Westminster Abbey; the traditional, and so typical, gondola singers in Venice; and the visit to La Scala Opera House in Milan. My trip was greatly enriched by music. Without a background in our musical heritage from the European continent, second only, in my impressions, to our European religious heritage, many of my activities of the summer would have been much less meaningful.

Marianne writes of her experiences:

It never occurred to me last year as I faced Schwäbisch village audiences or travelled along the Autobahn by moonlight in an Amerika Haus limousine, that it would ever be necessary to

use my diary as a memory refresher for such fantastic and wonderful experiences! However, an equal part of nostalgia accompanies this account for my Mu Phi sisters. I was a Fulbright grantee to Germany, 1954-55, studying voice in Stuttgart when I received the opportunity to perform through the Amerika Haus Field Program in Germany, an organ of the United States Information Service. I appeared both as a singer and accompanist during my year's stay.

Participation in these concerts came about by a freak stroke of fate. A young American baritone who had been assigned a field tour the spring before we Fulbrighters arrived, succumbed to an attack of infectious hepatitis four days before his first concert. Since my American roommate and I were the closest thing which the frantic Amerika Haus personnel could summon on such short notice, we inherited the tour until our friend recovered. Two sopranos didn't promise to be a terribly interesting program; however, our obliging German accompanist agreed to fill in with some Hindemith. We arrived in Leonberg the evening of the concert full of doubts, and feeling somewhat thrown together. I had uncovered a group of English and American songs and the Ravel *Scheherazade*; my roommate had assembled a Schubert and a Brahms group, with "Dich teure Halle" added for good measure. We had our qualms about the programming, since it is unheard of for a fine German artist to include more than two composers on a Lieder recital, let alone the heresy of an aria; and to sing songs in a "foreign language" without a printed translation was highly questionable. But in spite of these irregularities the concert was received surprisingly well; so well in fact that the Field Director who had asked us in desperation relaxed his concern over our strange combination.

Among the several surprises I received that evening, the biggest jolt came when I walked out on the stage for my first group. I was greeted not with the customary darkened auditorium, but with blazing lights which left no detail of room or audience to the imagination. Small wonder that the critic referred to

my momentary consternation as Lampenfieber (stage-fright), although there was undoubtedly an element of that present!

One freezing cold November evening we found ourselves singing in a quaint medieval town, in the castle. This castle was really authentic, complete with stone wall, cobblestone courtyard, fountain, winding staircase, and no heat. The obliging local director saw us shivering in our strapless gowns (only Americans would have been this foolish) and provided us with a little heater which shed its warm rays a total distance of three feet. Luckily my roommate had along a black woolen shawl which we used alternately. The audience probably thought they were seeing things. We sang mainly to keep warm that evening; and the next day the newspaper critic of the town expressed his regrets that there was no encore from either of us.

I shall never forget the warm July evening of our last concert, one month before I was to sail for home. I was the accompanist that evening. We performed in the Gustav-Siegle Haus in Stuttgart, as beautiful and modern an auditorium as Germany possesses, to an audience of the general public and friends, including GI's, members of the Foreign Service, and international acquaintances we had known at the Musikhochschule and Technical School in Stuttgart. The program included a French group, a Gluck aria, and a group each of Brahms, Wolf, and Barber; by this time nobody minded such a combination. Afterwards we were greeted backstage by our friends and several of our Hochschule professors. Last in line was our little Putzfrau, our cleaning woman Maria, all dressed up in a new formal gown; she very proudly handed us a small bouquet of flowers and a box of candies accompanied by a note of congratulation which I shall always cherish. Afterwards we all congregated at an outdoor cafe under a beautiful moon and enjoyed some Rheinwein, Apfelsaft and Kuchen, savouring the few times we had left together. It was a sad young woman who tumbled into her featherbed that night.

I have found so much to remember! The night we performed in an exquisite little cure resort, secluded high in the Schwäbisch Albs—the concert we gave

in a refugee camp near Ulm to people with saddened faces—the gifts of flowers and local wine at curtain calls—the detachment we tried to display upon seeing posters announcing our concerts. I felt a very humble pride that we had had the chance, not of singing in great halls, but of bringing music to people

who needed it as much as we in America need to laugh, yet cannot afford television or many recordings. I treasure these experiences among the most valuable ones of my life. They signify the tremendous powers of music; and they have shown me its unerring capacity to bind human hearts together.

More MU PHI EPSILON Mothers and Daughters



Sandra Bernat, Joanne Bernat Hackman,
and Marjorie Von Staden Bernat

THE BERNATS

△ MARJORIE VON STADEN BERNAT, a member of the Detroit Alumnae Chapter, and her two daughters, Joanne and Sandra, are proud members of MΦE, each having been initiated into Upsilon Chapter at the Cincinnati Conservatory of Music: Marjorie in 1926, Joanne in 1950, and Sandra in 1955. Marjorie graduated from the Conservatory with cello as her major, also serving as assistant to Karl Kirksmith, principal cellist of the Cincinnati Symphony Orchestra. She went to Leipzig for study with the world famous cellist, Prof. Julius Klengel, at the Leipzig Konservatorium. Returning to the States, she played with the Indianapolis Symphony Orchestra, concertized and appeared with various musical organizations both

as pianist and cellist. In 1931 she was married to Saul Bernat, violinist, and moved to Birmingham, Mich., where she teaches a large class in the Detroit area. Mr. Bernat is assistant manager of the Detroit Symphony Orchestra.

Joanne Bernat Hackman began the study of cello with her mother at an early age. She entered the Cincinnati Conservatory in 1950, married Willis Hackman, trombonist, and both became members of the Alabama Symphony Orchestra for the 1951-52 season. They then entered Indiana University and while there, were members of the Indianapolis Philharmonic Orchestra and also taught in that city. Service with the U. S. Air Force Band in New Foundland has interrupted their program. Joanne is the mother of two fine boys.

Sandra, like her sister, began the study of violin at an early age with her father, and at the age of 14 she was a member of the San Diego, Calif., State College Orchestra. After moving to Birmingham, Mich., with her parents, she won the High School Talent Award, the Matinee Musical Award, the Kate Chase Award given by the National Federation of Music Clubs, for study at

Chautauqua, N. Y., and a scholarship from the Eastman School of Music. She has appeared as soloist with the Detroit Symphony Orchestra and is now completing her junior year at the Cincinnati College-Conservatory of Music where she is a member of the String Quartet and other groups, also playing viola.—HAZEL MARK SMITH, *Historian*.

THE SCAMMONS

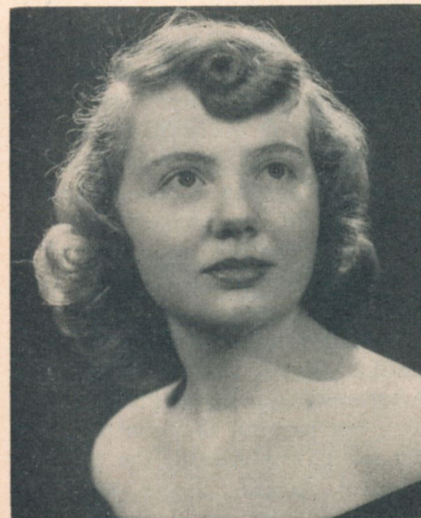
△ SACRAMENTO ALUMNAE CHAPTER points with pride at its first mother-daughter combination. This year, Ann Blundell Scammon is serving as president of Sacramento Alumnae Chapter, while her daughter, Mimi, has the distinction of being one of the charter members of Epsilon Omega Chapter at San Francisco State College. She is also serving as one of the officers of this new chapter.

Ann Blundell Scammon was born in Sparks, Nev., and began her

musical career with the study of piano and violin. After graduating from Sparks High School she attended the U. of Nevada for one year and then completed her studies at the College of the Pacific, Stockton, Calif., graduating with honors. While attending COP Ann was a member of the college orchestra and a cappella choir; honorary organizations included MΦE, Pi Kappa Lambda, and Phi Kappa Phi. She was also a member of Gamma Phi Beta and Alpha Theta Tau.

Currently, Ann's activities include membership in the P.E.O. sisterhood, Sacramento Saturday Club Board of Directors, All Saints Memorial Church (Episcopal) Memorial and Altar Guilds. She also serves as soprano soloist with the church choir.

Mimi Scammon was born in Susanville, Calif. She received her early education there. After graduating from C. K. McClatchy Senior High School, Sacramento, Mimi attended COP for one year, major-



Mimi Scammon



Ann Blundell Scammon



Janet Sillars



Evelyn Fort Sillars

ing in piano. Although Mimi will graduate from San Francisco State College in June, 1956, with a B.A. degree and general elementary teaching credential, she has continued her piano study throughout all of her college years. She has performed in programs at the Crocker Art Gallery, Sacramento, as well as in recitals at COP and San Francisco State, one of her last performances being Epsilon Omega's installation program.

Both Ann and Mimi attended the Fred Waring Choral Workshop and are making plans to attend the National Convention in Rochester, New York. — LENORA GEBBETT, *Historian*.

THE SILLARS

△ EVELYN FORT SILLARS, a major in organ and piano, taught in the piano department of Monmouth College for four years following her

graduation there in 1921. In 1926 Evelyn moved to St. Louis where she was soon busy teaching piano and organ as well as acting as accompanist at the Bernard Ferguson Voice Studio. After coming to St. Louis she was initiated into Theta Chapter. In the meantime Evelyn had married and when her husband died in 1948, she took over his activities in the printing business in order to support herself and their daughter, Janet. However she has managed to maintain a nice balance between music and business. After serving for 12 years as organist and choir director at the Independent Congregational Church of St. Louis, she is now in her fourth year in the same capacity at the Richmond Heights Presbyterian Church.

Evelyn has not neglected the piano under the pressures of business, but is much sought after as an accompanist because of her unusual sensitivity and her ability to read

rapidly music of all styles and schools. As a performer in her own right, she and Beulah Dieckman have been kept busy appearing in their interesting duo-piano recitals. In fact, this duo presented two groups of compositions on the first program in our Lenten Musicales this year.

Janet has inherited her mother's talent as well as her love of music. Now a sophomore at Washington University, St. Louis, she was initiated into Epsilon Tau Chapter in 1955. Besides maintaining a high academic average last year, Janet participated in so many campus activities that she was made a member of Sophomore Commission, national honor society. The flute is Janet's chosen instrument and under the guidance of her teacher, Albert Tipton, first chair flutist of the St. Louis Symphony Orchestra, she has developed into an excellent performer. Janet won partial scholarships to Aspen Music Camp in 1953 and 1954 and expects to return there this summer. Last year she won the \$300 Tanglewood Scholarship offered by the Women's Association of the St. Louis Symphony Society. In February of this year Janet was selected to represent the Music School of Washington University on a program of MTNA during their Des Moines meeting. While a senior in high school Janet was selected to participate in programs originating from KETC, an educational television station. Since entering college she has appeared much oftener. This year she has had charge of the orchestra connected with the Opera Workshop at the Music School. This ambitious MΦ and a young harpist have given a number of concerts for

church groups and on TV this season. There are also recitals when the Sillars—Evelyn and Janet—form a team as they did for the concert sponsored by the Women's Auxiliary of Christ Church Cathedral.—JULIA K. MURRAY, *Historian*.

EPSILON GAMMA'S MΦE FAMILY

△ EPSILON GAMMA takes pride in its Mu Phi mother-daughter-father combination, the latter being a MΦE patron and a Sinfonian. These three musicians are adopted Southerners as they were all born in Iowa. Elaine, mezzo-soprano and a senior at Belhaven this year, has spent most of her life in the deep South and has led a very busy life playing, singing, acting, and trying to hold her coveted place as top marksman in archery. She is a member of Alpha Psi Omega, national drama fraternity, president of Women's Recreation Association, a member of P.E.O. sisterhood and was elected to *Who's Who in American Colleges and Universities* this year. Elaine has just appeared as soloist with the New Orleans Philharmonic Symphony Orchestra in the Music Festival of the South. She has been soloist and assistant organist in Central Presbyterian Church and the Christian Science Church. Last summer she was chosen as one of 15 apprentices for summer stock at Flat Rock, N. C., with the Vagabond Players and has been asked to return this coming summer. During college she has been a pupil of Mrs. J. T. Caldwell, Sr., who is also a member of MΦE.

Helen Travis Avery is from Marshalltown, Iowa. She was



Harold, Helen, Elaine Avery

initiated into Omega Chapter at Drake U., graduating with a diploma in voice and public school music. A soprano, she was a pupil of Genevieve Wheat Baal. Helen also studied in New York City with Estelle Leibling and Katherine Bellamann and did some special study with Dr. Arthur Westbrook while at the U. of Nebraska. She has sung leading roles in the Jackson Opera Guild, and has been soloist in church and radio work. She has been a teacher of singing for many years and at present is acting as alumni secretary at Belhaven College. Helen was instrumental in organizing and petitioning for a chapter of MΦE at Belhaven and helped to install Epsilon Gamma. She is a member of Alpha Chi Omega, national social sorority, P.E.O. sisterhood, and DAR.

Harold Avery, born in Albia,

Iowa, is director of the Fine Arts Department at Belhaven College. He received a diploma in piano at Drake U. under Paul Stoye and later received his Master's degree at the U. of Nebraska. Other graduate work was done at the U. of California and Juilliard School of Music. Since coming to Mississippi he has been instrumental in beginning the State High School Choral Festival of which he was the first musical director. He is conductor of the Jackson Opera Guild which has finished its successful 10th season, and this year took a leave of absence to devote more time to the newly established two-day Music Festival of the South which is in its second year. The New Orleans Philharmonic Symphony and Belhaven College have collaborated to make this a permanent music festival. Mr. Avery's Belhaven Chorale, which tours regularly, has established a reputation throughout the entire Southland as an outstanding singing group. As guest conductor with the Chorale and the New Orleans Philharmonic he had the thrill of performing a Debussy work for women's voices and orchestra, "Salut Printemps," for the first time in America. This spring Elaine will give her senior recital and included on her program are three songs written by her father.



Chapter sforzando!

△ LOS ANGELES ALUMNAE Chapter sponsored three musicales this spring. The first one presented

Heinz Blankenburg, baritone, who has recently completed his first season with the San Francisco Opera

Company and has appeared with the Philharmonic Orchestra, Hollywood Bowl Symphony Orchestra, and in recital.

The second concert was an all Mu Phi program presenting Patti Paull, soprano, with Shirley Curtis as accompanist and Marie Monahan, cellist, with Pearl Kaufman as her accompanist. Patti has come to Southern California from the Northwest where she is well known for her work in opera, oratorio, radio, television, and recital. Marie, a graduate of University of Southern California where she received her Masters degree was a Mu Phi Scholarship winner. She was soloist at the Bach Festival in Carmel and has had many solo and ensemble appearances in Southern California. She was chosen by Leopold Stokowski to appear in the Pacific Coast Music Festival last September.

The final concert presented Eda Jameson, pianist, one of our own members who has recently returned from Europe where she studied for a year. While there she appeared in concert on radio and TV in France, England, Sweden, Austria, Denmark, and Switzerland. In Vienna she introduced several new American works with great success. Eda has by her accomplishment in recital, orchestral appearances, and radio broadcasts arrived at a place of importance among the young artists of the music world and the Los Angeles Alumnae Chapter feels it is an honor to have had the opportunity of presenting her in concert.—VIVIAN P. JOHNSON, *Historian*.

△ SEATTLE ALUMNAE Artists Concerts Series was inaugurated in 1951 at the suggestion of Eleanor

Hale Wilson, who felt that with so much musical talent in our group it would be better to sponsor three or four concerts a year and make use of the abilities of our members in that way rather than through cookie sales, teas, and other methods we had previously employed to raise money for scholarships. We already had two scholarship funds, the Frances Dickey Memorial fund and the Aura Morrison fund, but there still seemed to be a great need to help many fine young musicians who might otherwise be deprived of the opportunity to continue their studies.

Through the fine spirit and cooperation of artists who were asked to perform, the gracious generosity of Dr. Stanley Chapple and the U of Washington School of Music in allowing free use of the fine auditorium in the University, and the untiring work of the program and ticket chairmen, the series each year has been most successful. We do not accept admission to individual concerts, but sell memberships to our season scholarship fund and before the concerts begin, all the tickets are sold. The price is \$2.00 for the season, which is an extremely low price for the good music to be heard, and nearly all the purchasers repeat for the next year's concerts.

We try to feature a variety of music in our concerts: singers, violinists, pianists, flutists, choral ensembles, string ensemble, and so on. Our first program was given November 6, 1951, and featured the MΦE String Ensemble under the direction of Vilem Sokol; Gwendolyn Remy, pianist; Nona Zimmerman, contralto. Our last one was held Feb. 20, 1956, with the following artists performing: Gwendolyn

Remy, pianist; Dwan Weyand, cellist, Ed Mignon, pianist, Irene Bostwick, harpsichordist, Eva Heinitz, cello continuo, and Miriam Terry, director of the Choral Group. It played to a packed theatre, and all the artists received tremendous applause.

We have had appreciative comment from the city's music editors as well. Louis R. Guzzo, writing in *The Seattle Times*, Jan. 30, 1955, said in part: "If I were trying to impress a visitor with the advantages of residing in Seattle, this is one of the weeks I would have him be my guest. . . . A good warm up for the week ahead should be the MΦE concert at the U of Washington's Music Building tomorrow evening. The music sorority has some very competent performers in its membership. Four of them will do the honors tomorrow evening—Adele Meisner Sterry, soprano, who won the sorority's 1954 scholarship; Margaret Holm, clarinetist, and Helen Belvin and Mildred Smith, pianists." JESSIE GREER, *Historian*.



Minneapolis' Virginia Krumbiegel



Rubi Wentzel, Minneapolis Alumnae

△ THREE MEMBERS of Minneapolis Alumnae Chapter have been concertizing in and around the Twin Cities this past winter with much success. Rubi Wentzel, cellist, and Virginia Krumbiegel, pianist, have been appearing in recital and in a series of eight sonata programs which have been broadcast over KUOM, the University of Minnesota radio station. Among the works featured by this competent pair were the Richard Strauss *Sonata in F Major* and the Dimitri Shostakovich *Sonata*.

Rubi Wentzel has played with the following orchestras throughout the country: Dallas Symphony, Wisconsin Symphony, Mt. Vernon Symphony, and the New York City Center Opera Company Orchestra. While in New York, she taught in a private studio there and played in recital a great deal, particularly for MΦE activities in the city and in broadcasts over WNYC. In Minneapolis she is an active member of Thursday Musical, plays for the

Women's Institute in St. Paul, the Summer Pops Orchestra and other professional groups. She has four children and this past year the family has enjoyed having an exchange student from Germany. Rubi is Secretary of the Minneapolis Alumnae Chapter. Her accompanist, Virginia Krumbiegel, is well-known in the Twin Cities as soloist and accompanist and has long been identified as accompanist for various choral groups, among them being the Cecelian Singers. She is also a member of Thursday Musical, and has a 16-year-old stepdaughter. Recently Rubi and Virginia played a program for a scholarship benefit program for ΦP Chapter at Minneapolis College of Music.

△ LENORE ENGDahl, pianist, played the Liszt *Hungarian Fantasy* with the Minneapolis Symphony Orchestra at one of the Twilight Concerts in January. It was brilliant playing of a work that calls for just that, and we were all proud to hear one of Minneapolis' own in the solo spot with the orchestra.

△ SAN FRANCISCO Alumnae regret to report the departure of Helena Redewill from Berkeley, her home for many years. Her husband, Dr. Redewill, one of San Francisco's well known physicians, retired in January and they have bought a home in Whittier, Calif., where their son practices medicine. Helena was for many years Editor of THE TRIANGLE and is still an active and most enthusiastic member of MΦE.

△ SAN FRANCISCO ALUMNAE CHAPTER'S Guest Day, April 8, was a noteworthy success with Mr. and Mrs. Charles Mel of Berkeley as hosts. The Mel residence, adjoining

that of Admiral Nimitz, is on a hillside and, as one guest expressed it, is so contrived as to let the outdoors in and the indoors out since garden, terrace, and living quarters all communicate so invitingly.

The program opened with the playing by Alice Redewill Miller of Chopin's *Sonata* opus 58. Following this Louise Gentry, with Gilbert Crane as accompanist, sang a group of Dvorak's *Biblical Songs*. Elizabeth and Edward Bell played a *Sonata for viola and piano* by Milhaud. The program concluded with songs in French and English interpreted with artistry by Fred Beardsley with Virginia Beardsley, our president, at the piano.

During the refreshment period at the close of the program Elizabeth Bell related something of her experiences as first violist with the Portland Symphony and of her European trip as a member of a concert unit with USO Camp Shows. Alice Miller gave an interesting word picture of the difference in approach between Harold Bauer and Leopold Godowsky when criticizing the performance of a pupil. When Alice went to Paris to study with Bauer she played the Chopin *Sonata in B minor* for him. He laughed good-naturedly and told her it reminded him of the Indians and Mexicans he had seen in Arizona because, like them, it moved so sluggishly. He proceeded to illustrate at the piano with a highly amusing demonstration of her effort. Later, at the Vienna Conservatory while studying with Godowsky she had been selected to try out for a concert performance of the Grieg *Concerto*. Something she did annoyed Godowsky and he called out to her, "Do you think you



Alice Redewill Miller

are a genius?" Irritated in turn, Alice retorted that if she considered herself a genius she wouldn't be there. She was told to remain after class, and expected the worst. But Godowsky merely invited her to walk with him while he explained quite patiently that even a genius needs training. Alice played the concerto at the concert.—ALICE HOWATT, *Historian*.

PREPAREDNESS

*For all your days prepare,
And meet them ever alike:
When you are the anvil, bear—
When you are the hammer, strike.*

MARKHAM

... Great Thoughts ...

THE MUSIC-MAKERS

*We are the music-makers,
We are the dreamers of dreams,
Wandering by lone sea-breakers,
Sitting by desolate streams.*

—A. O'SHAUGHNESSY

*Heard melodies are sweet, but those
unheard
Are sweeter; therefore, ye soft
pipes, play on,
Not to the sensual ear, but more
endeared,
Pipe to the spirit ditties of no tone.*

—From *Ode to a Grecian Urn*

By KEATS

The art of living is the art of using experience—your own and other people's.—THE RIGHT HONORABLE VISCOUNT SAMUEL.

*There are two ways of exerting
one's strength; one is pushing down,
the other is pulling up.*—BOOKER T. WASHINGTON.

Good teachers cost more, but poor teachers cost most.—WAURINE WALKER.



OF MΦE

JOAN METCALF SCHAEFER

△ JOAN METCALF SCHAEFER, initiate of Epsilon Chapter in To-

ledo, O., is now fulfilling the position of Dean of Women at the U of Southern California. Joan is busy sponsoring women's service organi-

THE MAY 1956 TRIANGLE OF MU PHI EPSILON

21

zations, doing personal and academic counseling, promoting public relations in the Southern California area, promoting and helpfully advising professional and social sororities, serving on committees to help solve individual and student problems, and giving innumerable talks to the university, the faculty, and the family groups. In spite of her many duties at the university, Joan finds time to enjoy a happy home life with her husband, Mr. William A. Schaefer, director of bands at USC, and to sing in the Angelica Lutheran Church choir, which he directs.

Joan received her B.S. in education with a major in music at Miami University in Oxford, O. There she was president and secretary of Associated Women Students and a Mortar Board member, member of Delta Zeta sorority, Kappa Delta Pi member (education honorary), violinist in the orchestra and in a string quartet, and vocalist in the choir and the madrigal group. Her first position in teaching was as mu-



Joan M. Schaefer

sic supervisor, both instrumental and vocal, in the village of White House, Ohio. She later became music supervisor in Sylvania, O., at which time she became affiliated with the Cleveland Ohio Alumnae Chapter. She has also acted as Dean of Women at Carnegie Institute of Technology in Pittsburgh, Pa. There, Mr. Schaefer directed the famous Kiltie Band and taught courses in conducting, brass instruments, and methods of teaching instrumental music.

Joan's favorite pastime activity is attending concerts with her husband. She enjoys all forms of art, especially contemporary art, also drama, the reading of books and poetry, and playing records.

Because of her love of music and her background in music, which has occupied the major part in her life, Joan is especially interested and keenly aware of the many musical activities for girls at USC. Furthermore, she has most willingly given her services and inspiration to Mu Nu Chapter at SC.—LYDIA LOUISE DUFF.

ELIZABETH JONES KUTSCHBACH

△ ELIZABETH JONES KUTSCHBACH of Epsilon Epsilon recently gave her graduate recital leading to a master of music degree in piano from Texas Christian University. Included in her recital was "Chromatic Fantasy and Fugue" by Bach, the Beethoven "Waldstein Sonata," works of Brahms and Chopin, and Ravel's "Le Tombeau de Couperin." Previous to this recital Elizabeth played the *Concerto No. 2 in A Major for Piano and Orchestra* by



Elizabeth Jones Kutschbach

Liszt, whose performance was applicable toward a Master's degree. A critic said of this performance: "Mrs. Kutschbach addressed herself to the work with a certain elation of spirit which enhance the uplift of the piece with the hearer. The technical approach was assured and confident, accounting for clean delivery of brilliant passages, and her bright tone carried through the orchestra."

Elizabeth's home is in Weatherford, Texas, where she joined the faculty of the Weatherford Junior College in 1954 and became the head of the music department.

She began her study of piano at the age of five and gave her first piano recital at the age of 10, under the direction of Hugh T. Huffmaster at Houston. During her senior at San Jacinto High School at Houston, she appeared with the Houston Symphony under the direction of Ernest Hoffman, going on a tour with the orchestra to six major cities in Texas during the 1940-41 season. She received her Bachelor of Music degree, piano major, in 1946, studying piano under Dalies Frantz. She then took post-graduate work in piano from Arthur Newstead in New York, at the Juilliard School of Music in 1946-47.

In June, 1954, she entered TCU to begin study on her Master of Music degree, with piano study under Keith Mixon. This summer Elizabeth plans to study with Robert Casadesus at the American Conservatory of France in Fontainebleau.—NORMA J. MCPHERSON, *Historian*.

JO ANN CROSSMAN STENBERG

△ JO ANN CROSSMAN STENBERG was born in San Mateo and received her early training with her mother. Later she was a pupil of Harold Logan in San Francisco. Her schools include the U. of Southern California, where she appeared as soloist with the University Symphony, San Jose State College, and Sherwood Music School in Chicago where she received her BM degree. Jo Ann was a special initiate into Mu Xi Chapter at the American Conservatory while in Chicago. Jo Ann was also a student of Leo Podolsky in Chicago, and now coaches with Adolph Baller of San Francisco. In 1951 she attended the Aspen Institute, studying under Rudolf Firkusny, and met her husband, baritone Donald Stenberg. After their marriage they made numerous appearances throughout the Midwest in joint recital under management of the late Harry Culbertson. She also performed with the Chicago Symphony and for two consecutive years won first place in the International Recording Festival.

Since their return to California, Jo Ann and her husband have both given a San Francisco debut recital and have each performed as soloist with the Peninsula Symphony. Under local management they have

been doing joint recitals for various clubs and organizations as well as several radio broadcasts.

Of their daughter, Cheryl Ann, aged 1 year, 7 months, Jo Ann comments: "She shows remarkable talent for banging the piano and sleeping soundly through my three-hour daily practice sessions."

BRUNETTA MAZZOLINI

△ PORTLAND ALUMNAE CHAPTER takes great pride in soprano Brunetta Mazzolini who has been invited by Bruno Walter to sing the soprano solo in the Mozart *Requiem* performance to be given in the Hollywood Bowl during the 1956 summer concert series.

Brunetta, who was born in St. Johns, Mich., began to study voice as a senior in high school. In auditions at the Curtis Institute, she was one of six chosen for study there from 125 applicants. After Curtis, Brunetta studied in Los Angeles with Tilly DeGarmo and Fritz Zweig. She also coached with Lotte Lehman. Her first break came when she was guest soloist with Sigmund Romberg in a Hollywood concert. Subsequently she had a weekly TV show in Los Angeles. In 1949 she came to Portland to teach at the U. of Portland. While in the Northwest, she has sung on the Standard Hour on three occasions, with the San Francisco Symphony, Bruno



Brunetta Mazzolini

Walter conducting, at the Ojai, Calif., music festival with Thor Johnson conducting, and also at Ojai in a Mozart recital with William Steinberg conducting.

Last summer Brunetta went to Europe to audition for various European opera companies. Her brother, a tenor, is singing in Rome. She has opportunities to go abroad again but says she prefers for now to stay at home and be Mrs. Ray Spurgeon.

Word has recently been received of the exciting news that Brunetta will be soloist with the Chicago Symphony Orchestra, Bruno Walter conducting, in three performances of the Brahms *Requiem* next January.

We Welcome Her Into Our Sisterhood

△ PHI SIGMA CHAPTER is very happy to welcome Rose Goldberg Klowden as a new member of MΦE. She has gained recognition through her many recital appear-

ances as a gifted young pianist. Most of her training has been in Chicago under the direction of Sergei Tarnowsky. Rose received her Bachelor and Master of Music

degrees from DePaul University. In the East, Rose studied with Robert Casadesus. She made her debut in Chicago in November, 1937, and has appeared as soloist with the Illinois Symphony and with nearby community orchestras. With the Illinois Symphony Orchestra, Rose presented the first Chicago performances of the Radie "Britain Fantasie," the Bartok "Rhapsody,"

and the Tscherepnine *Concerto in F*. Rose appeared as accompanist with Maria Kurenko in the 1951 University of Chicago concert series. She has taught piano for 15 years, beginning her career as an undergraduate, is a faculty member of the DePaul University School of Music, and in June will receive a Master of Arts degree in education from the University of Chicago.

We Salute Eugene Alumnae MΦE Husbands

△ SURELY when our husbands do as much for MΦE as do many of ours of the Eugene Alumnae Chapter, we can refer to them as our "better halves." And we're not even including their patient (we trust) jobs as babysitters during our long evening's absence once a month for Mu Phi meetings.

Without doubt the husband with the most unique position is our Barbara Dieterich's Milton. He is the sole male adviser to a college chapter in the United States, while Barbara is the alumnae adviser to Nu Chapter. Milton is on the faculty at the U. of Oregon, teaching 'cello and theory, is a church organist and choir director, a symphony player, and a composer! In fact his new choral works "Benedictus" and "Sanctus" were premiered at a Morning Musicales, "Music U.S.A.," in October, 1955. In addition he was commentator for "Musical chronology—organ" in 1953.

Connie Bittner's Francis also is on the University faculty as teacher of piano and theory, is current presi-

dent of the Eugene District of the Oregon Music Teachers' Association, and is a composer, two of whose works have been presented on a Morning Musicales. He was commentator for "Pattern of the Present" in 1952 and "Focus on Piano" in 1954.

Both of these husbands have weathered through their wives' terms as president of the Alumnae Chapter as our Mollie Hardin's Hal is now cheerfully doing. For that alone he deserves credit—but more too! He participated in our "Music U.S.A." Musicales, and plays double bass in the Eugene-Springfield Symphony Orchestra of which our Mollie is concertmaster.

Mary Harrison's Russell is department head of music at the Eugene High School. Together, Mary and Russ presented a concert in our series.

Bernice Lomax's Ken is another of our faithfuls. As radio announcer he has given us fine publicity for our worthy scholarship projects.

For two Christmas parties our

husbands have taken part in madrigal singing and caroling. Participating in addition to those already mentioned were Marjory Wilson's Bob, Doris Saunder's Dick, Kathryn Asay's Frank, and Connie Elkin's Bill. Connie is one of our "workingest members," and also plays in the symphony.

Gwen Hayden's Jess teamed with Frank Asay in helping with transportation for our girls at convention. Gwen is the one author in our group, and plays viola in the symphony. Incidentally, Frank and Bob Wilson are past presidents' husbands.—
CONSTANCE BAXTER BITTNER, *Historian*.

On Campus . . .

At Brigham Young University

▲ BRIGHAM YOUNG UNIVERSITY, home of one of our newest chapters, Epsil Chi, is located on Temple Hill overlooking the city of Provo, Utah, and has as its backdrop mighty Mt. Timpanogos and beautiful Utah Lake. The moun-

tains surrounding Utah Valley are called the Alps of America. BYU was founded nearly 78 years ago by Brigham Young and was organized and established as an academy in the name of the Church of Jesus Christ of Latter-Day Saints. Karl G. Maeser, German-born convert to the Church, was the school's first president and set the pattern in educational philosophy which is still maintained. The school has grown from 29 students to more than



Brigham Young University's Madrigal Singers



A scene from "Capriccio" by Richard Strauss in its first American performance on April 2, 1954, given by Juilliard School. (See page 28.)

7,500 and from a one-room schoolhouse to a 200-acre university campus. BYU provides for administration of student activities through a democratic student body organization. Among the student activities are the following: Concert Band and Symphony Orchestra, which offer qualified musicians professional training and ample activity during the school year; the Opera Workshop, which has gone far in the perfection of classic and contemporary operas with student casts, averaging three operas per year; the a cappella Choir, Madrigal Singers, and other choruses, open to qualified singers. They sing many concerts during the year and are featured at the April conference of the Church; ambitious student assembly schedule of two University-wide assemblies held in the George Albert Smith Fieldhouse each week are heavily attended.

These groups are directed by noted musicians: Dr. Don L. Earl, musical director of the Opera Workshop; Newell B. Weight, director of the a cappella Choir; Lawrence Sardon, conductor and musical director of the BYU Symphony Orchestra; and Ralph G. Laycock, conductor of the Concert Band. Dr. Crawford Gates, one of the judges for our Original Composition Contest is well-known for his compositions and arrangements, and is a member of the music faculty. Dr. John R. Halliday, chairman of the Department of Music, organized The Madrigal Singers in 1952. The fine work of this group has been widely acclaimed wherever it has toured. Dr. Halliday conducted the Salt Lake Tabernacle Choir in 1937 and the following year he went to Eastman School of Music where he taught and studied until 1941. He received the first Ph.D. in Music

Theory in America that same year and returned to BYU where he has remained since except for a year's leave of absence to study in Paris and Rome.

And at Juilliard School of Music

▲ JULLIARD SCHOOL OF MUSIC in New York City, home of Epsilon Psi, this year is celebrating the 50th anniversary of its founding. The present School is actually an amalgamation of the Institute of Musical Art, which was founded in 1905 by Frank Damrosch and James Loeb, and the Juilliard School of Music, founded in 1924. The principal purpose of both schools was to make available to American music students musical education comparable to the best in Europe. To realize this goal such eminent European teachers as Ernst von Dohnanyi, Alexander Siloti, Marcella Sembrich, Paul Kochanski, Anne Schoen-Rene, and Josef Lhevinne were brought to America to teach. It is interesting to note that during the 50 years of the School's existence, the trend of young American musicians traveling to Europe to finish their education has been to a great degree reversed, and at present approximately 10% of the 575 students in the Regular School at Juilliard come from foreign countries in every part of the world.

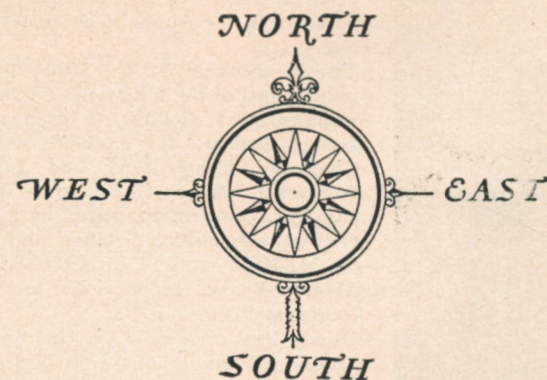
Another salient development in American music during this last half

century has been the emergence of a vital and varied group of American composers. In contrast to the early years of the School's history when few American composers were presented on its programs, the Festival of American Music will commemorate the fiftieth anniversary with 35 composers' works, especially commissioned for the occasion.

The Preparatory Division of the School has grown from an enrollment of 17 in 1916 to 524 last year. The Dance Department was established in 1951 and through its curriculum offers comprehensive training in modern dance and ballet. Under the leadership of William Schuman, who assumed the presidency of Juilliard in 1945, and in accord with his strong belief that a musician must not only achieve great technical proficiency, but must also be equipped to contribute, through his profession, to the development of music as a constructive force in contemporary life, the Academic department of the School has been enlarged and strengthened.

Among the major awards won by Juilliard students during the school year 1954-55 are the Walter W. Naumburg Musical Foundation Award by Mary MacKenzie, contralto; the Edgar M. Leventritt Award by John S. Browning, Jr., pianist, and Betty Jean Hagen, violinist; John Hay Whitney Opportunity Fellowships won by Masa Kitigawa, pianist, and Carl Darrow White, baritone; and John Simon Guggenheim Memorial Fellowships won by Hall Overton, composer and alumnus of the School and two faculty members, Dr. Bernard Stambler and Mr. Henry Brant.

From . . .



ON TO ROCHESTER

Presenting our Music Delegates



BARBARA ELLEN
MILLER
Phi Gamma



FRANCES EATON
RUGGIERO
Boston



BEVERLY COLLINS
Epsilon Nu



ELIZABETH WILLIS
STANTON
Phi Psi



LORRAINE ADAMS
Phi Omega



CELY CARRILLO
Epsilon Psi



RACHEL BOOTHROYD
Indianapolis



SHIRLEY MERRILL
Psi Upsilon



SHIRLEY VAN CLEAVE
Fort Worth



VIOLET THOMAS
San Jose



JANICE SEWARD
BROADHURST
Wichita



MARLYS WATTERS
Kansas City

THE Beverly Hills trio, composed of Leola Blair, clarinet, Harriet Payne, viola, and Frances Wishard, piano, will be heard in the Alumnae Delegates Concert.

THE Washington, D. C., String Quartet is composed of the following: GENEVIEVE FRITTER, first violinist, a graduate of Judson College, did graduate work at Cincinnati Conservatory and Juilliard Summer School at Chautauqua, N. Y.; has won composition prizes in a MΦE original composition contest and from the MFMC, published by Schirmer.

MARION PEASE, second violin, graduated from Ohio Wesleyan U.

DORIS PREUCIL, viola, is an Eastman School of Music graduate; at present she is playing with the National Symphony Orchestra.

JEAN ROBBINS, cello, graduated from Western Reserve U, where she was a pupil of Diran Alexanian.

BETA

CORRINNE CURRY, a senior at the New England Conservatory of Music, is a student of Mme. Marie Sundelius. She is soprano soloist at the 2nd Church in Dorchester, Mass. She received the following awards and scholarships: Rhode Island Federation of Music Clubs and WEAN scholarship for two consecutive years; Monday Morning Musical Society of Rhode Island scholarship award; Walker Scholarship presented by NEC. Corinne has given recitals in Massachusetts and Rhode Island, and participated in concerts sponsored by NEC and in broadcasts from WEAN in Rhode Island. She has been awarded a contract to sing with the Rhode Island Philharmonic Orchestra, conducted by Francis Madeira, for the 1956-57 season.

MU

PATRICIA MCKINNON is enrolled in Brenau College as a junior. She is a music major, her major instruments being piano and organ, along with a French minor and elementary education minor. Before entering college, Patricia was outstanding in all musical events, as she attended Music Festivals in Piano, receiving superior rating and therefore going on to State Festivals. Pat entered Brenau College in 1953 upon receiving an honor scholarship. Along with her studies, Pat has become a teacher in the Brenau Piano

Preparatory Department, teaching 13 students as part of her scholarship. Among her other activities at Brenau, Pat has been on the Dean's List every semester since enrolled, is a member of Key Club, Lorelei Club (junior Federated Music Club of Georgia), Sigma Pi Alpha (language honorary fraternity), Head Chapel Monitor, Chorus Accompanist, and first vice-president of Alpha Chi Omega social fraternity. Her interests center around those elements in the Music Department and MΦE for which she has worked to build membership and strength.

PSI

JANE ARNOLD, Psi, is a violin major at Bucknell University. She has studied for 13 years and because she lives near Philadelphia, she was able to study with Dr. Spantz at the Musical Academy in that city, where she also played with the Mainline Community Orchestra. Jane belongs to the Chapel Choir, Women's Glee Club, and the orchestra, in which she serves as concertmaster. She has participated in the musical shows presented at Bucknell: in the chorus in *Carousel*; and this year had a lead part in *Oklahoma*. She belongs to Kappa Delta Epsilon, national education honorary. She is majoring in violin with a piano and voice minor and has been studying viola this year. After her graduation in June she plans to teach.

MU UPSILON

Piano Quartette

BARBARA ROARK, violinist, is a sophomore at the Eastman School of Music. From Spokane, Wash., she attended Eastern Washington College in Cheney. She was a member of Epsilon Iota Chapter. In Spokane, she was a recipient of The Young Artist Award and soloist with the Spokane Philharmonic. She is a student of Joseph Knitzer at The Eastman School.

RHODA LEE RHEE, violinist, is from Oak Ridge, Tenn. She is a sophomore at The Eastman School of Music and a student of Francis Tursi. She is also a member of The Rochester Philharmonic.

POLLY COMSTOCK, cellist, is from Hastings-on-the-Hudson, N. Y. She attended the New York State Music Camp where she was cello teacher and a counselor. A sophomore, at present she is studying with Georges Miquelle at The Eastman School of Music.

MARY ANN WIX, pianist from Harrisburg, Pa., is at present a senior at The Eastman School of Music where she is a student of Orazio Frugoni. She has been a member of Mu Upsilon Chapter for 3 years and served as chorister during the year 1955-56.

PHI GAMMA

BARBARA ELLEN MILLER is a sophomore at the Peabody Conservatory. She was initiated into Phi Gamma in 1955 and is in

music education with a major in clarinet, studying with Sidney Forrest. She attended Fairfax, Va., High School and was a member of the band for four years, being student director for two years. For three years she was a member of the Virginia All-State Band and the National Honor Society. She has appeared in solo and ensemble recitals at Peabody and was on a radio broadcast produced by Phi Gamma. In 1953 she attended the National Music Camp in Interlochen.

PHI UPSILON

SHIRLEY MERRILL, Phi Upsilon, studied piano with her mother until five years ago when she began her studies with Jules Walfers, Boston critic and assistant Dean at the Boston University School of Music. She is now 3rd-year senior at BU with a piano major. Shirley has studied concerto playing with Arthur Fiedler and has had master sessions with Heinrich Gebhard. She has appeared in over 50 recitals, 20 radio broadcasts and 14 TV programs throughout New England. In March of this year she was soloist at the Isabella Stewart Gardner Museum, soloist with the Boston U Symphonic Band in their Boston concert and on their spring tour. Shirley is corresponding secretary of Kappa Kappa Gamma.

PHI PSI

ELIZABETH WILLIS STANTON is a sophomore at Mary Washington Col-

lege of the University of Virginia, with a major in music education. For the past 4 years she has studied voice and had previously taken piano lessons for 7 years. She attended Virginia Music Camp at Massanetta Springs, Virginia, for three summers where she participated as soloist in student music programs. During the summers of 1953 and 1954 she attended the summer sessions of Westminster Choir College in Princeton, New Jersey, and represented Mary Washington College in an All-State Chorus for the associational meeting of the Virginia Board of Educators. While in high school she was a member of the Glee Club and the Girl's Ensemble and was a participant in the All-State Eastern Chorus in Richmond, Va. Her musical activities on campus include solo work, Madrigal Singers, Mary Washington College Choir, of which she is vice president, and church choirs.

MARIE ANNE CHERRY, 20, of Falls Church, Va., is a music major at Mary Washington College of the University of Virginia. She started studying piano at the age of seven and is now a pupil of Levin Houston of Mary Washington College. Marie has received superior ratings from the NFMC contests in which she participated. Among the many musical activities in which she participated while in high school were the Madrigal Singers, A Cappella

Choir, and was the accompanist for the other musical groups. She participated in the Talbott Music Festival at Westminster Choir College in Princeton, N. J. At Mary Washington, Marie is a member of the Madrigal Singers. She has also participated in musical programs on radio and TV.

PHI OMEGA

LORRAINE ADAMS, Phi Omega, is an organ major at Westminster College, New Wilmington, Pa. She first studied organ with W. Robert Huey, Jr., and is an organ pupil of Arthur A. Birkby at Westminster. For four summers Lorraine has studied with Claire Coci. She played sophomore and junior recitals and last year played in an organ recital sponsored by AGO in Youngstown, O. In October she took part in the Regional Competition of AGO Young Organist Contest in Louisville. During her four years in college she has been in the College Band, Vesper Choir, Concert Choir, Mermaids (swimming group), Alpha Gamma Delta, Cwens, Pi Sigma Pi, Mortar Board, May Court, and was recently elected to *Who's Who in American Colleges and Universities*. In her junior year she was elected the Outstanding Junior Woman. For three years she has been organist and choir director at the Neshannock Presbyterian Church in New Wilmington. Aside from her musical activities, Lorraine enjoys swimming and sailing.

EPSILON NU

BEVERLY COLLINS is Epsilon Nu's music delegate.

EPSILON PSI

CELY CARRILLO, Epsilon Psi, made her operatic debut in Manila, Philippines, in 1948 as "Gilda" in *Rigoletto*, at the age of 13. She has been a scholarship student at the Juilliard School of Music in New York City since 1951 and was graduated with a Bachelor of Science and Master of Science degrees in 1954 and 1955, respectively. She has performed in numerous concerts and operas at Juilliard, has concertized in Nashville, Tenn., performed for Voice of America, and radio WNYC, sang with the City Symphony Orchestra, and had the title role in the world premiere of Bernard Rogers' "The Nightingale" with the Punch Opera Company in New York City. She has recently made a film for TV with Raymond Massey in the series, "I Spy."

EPSILON UPSILON

DIANA PACINI, Epsilon Upsilon, did solo and accompaniment work at Dormont High School, and gave a recital at the Baldwin Piano Co. in Pittsburgh upon graduation in June, 1954. She studied piano with Mrs. Lotta Galbraith of Dormont for 7 years, and at present studies with Louis Pollock at Duquesne University. Diana is a sophomore in Music Education and recently performed in a

student recital at the Duquesne University School of Music. In addition to this, she has played for various hospitals and organizations in and around Pittsburgh.

BOSTON

FRANCES EATON RUGGIERO, native of Mason, N. H., started her violin studies at an early age with Alma Metcalf, now the wife of conductor Howard Mitchell. She was chosen to represent her high school for three consecutive years in the New England Music Festival Orchestra. In 1937-1938 she studied at the Peabody Conservatory of Music and played in the Baltimore Women's Symphony Orchestra. The following year she transferred to the New England Conservatory of Music where she studied with Harrison Keller, graduating in 1941. Her summers were spent doing church and concert work at Edgartown, Martha's Vineyard. During the summer of 1941 she played in the NYA orchestra under Arthur Fiedler. She is now actively engaged in teaching, performing, and bringing up three active boys ranging from the age of 3 to 14. Her husband, Louis, also a graduate in violin from the Conservatory, is well known in musical circles around Boston. Their leisure time is spent doing ensemble and orchestra work. One of her greatest thrills came last year when she performed with the Boston University Orchestra and chorus un-

der Leopold Stokowski, first in Symphony Hall in Boston and two days later in Carnegie Hall.

INDIANAPOLIS

RACHEL BOOTHROYD, Indianapolis Alumnae, is originally from the state of Washington where she attended the U. of Washington after a summer at USC. Later she attended the U. of Idaho and graduated from Chicago Musical College with a Bachelor of Music degree. Rachel studied harp with Alberto Salvi, Joseph Vito, and Marcel Grandjany. She was initiated into Iota Alpha Chapter, which she represented at the 1942 National Convention as a business delegate, and formerly was a member of the Chicago Civic Orchestra. She is now employed at Finance Center, U. S. Army, where she is an instructor in various clerical and technical subjects.

KANSAS CITY

MARLYS WATERS, Kansas City Alumnae Music Delegate, was president of Mu Delta Chapter and was their delegate to the 1948 convention. While a student at Kansas City Conservatory of Music she studied with Latonia Barnett, also a Mu Phi, and had her own radio and TV shows at that time. Marlys has been soloist with the Charlotte (N. C.) Symphony Orchestra on their first TV appearance, with the Jacksonville, Trenton, Brooklyn Philharmonia, Kansas City Philharmonic, and Philadelphia

Symphony Orchestras. The latter performance was under Eugene Ormandy in Mahler's *Second Symphony*. She has also appeared many times in solo in *The Messiah* and *Elijah* and has had lead parts in such operas as *Lucia de Lammermoor*, *Rigoletto*, *Pagliacci*, *Don Pasquale*, *Les Contes d'Hoffmann* and *Così fan Tutte*. She has appeared many times in concert throughout the United States and Canada and was soloist at Radio City Music Hall and on "I Am an American Day" at the Central Park Mall in New York City. Marlys was a Fulbright scholarship winner for study, concert, and operatic appearances in Italy. In 1954 she was awarded the Blanche Thebom Scholarship.

FORT WORTH

SHIRLEY VAN CLEAVE, vice president of Fort Worth Alumnae Chapter for next year, received a Bachelor of Music degree with highest honors from the University of Texas in 1953, and a Master of Music degree in 1954, majoring in music theory. While at the University, she was a teaching fellow in theory and piano, and studied piano with Dalies Frantz. She was a member of Pi Kappa Lambda, honorary music fraternity. She studied at the University of Colorado in the summer of 1953. For the past 2 years she has taught piano and theory at Arlington State College.

JOYCE GILSTRAP JONES, pianist, is part of the 2-piano team to be Fort Worth's contribution to our Alumnae Delegate Concert. (See page 56.)

WICHITA

JANICE SEWARD BROADHURST, lyric-coloratura, received her Bachelor of Music Education degree from the U. of Wichita. During the summer of 1954 she studied at the Conservatory of Music, Fontainebleau, France. While there she received the top honor in the annual vocal auditions. As recipient of this award, the song "Dirge In Woods" by Aaron Copland was dedicated to her. Last spring Janice was chosen as the only vocalist in the student auditions to sing at the NFMC Convention in Miami. On March 6, 1956, she was the vocal winner in the women's division at the National Association of Teachers of Singing in Denton, Texas.

SAN JOSE

VIOLET THOMAS, San Jose, received her early musical training with Mabel Webster - Osmer and part of her college work at the American Conservatory of Music in Chicago. She then entered San Jose State College where she received her A.B. degree. At Teachers College, Columbia University, New York, she did graduate study and received her M.A. degree. While in New York she also studied pipe organ

and is now serving as organist in First Church of Christ, Scientist, Los Gatos, Calif. Recently she has studied piano in California with Bernhard Abramowitsch and Egan Petri. Violet teaches in the music department of San Jose State College where she is an assistant professor of music. She has appeared on MΦE programs as well as faculty recitals at the college. She was initiated into the collegiate Phi Mu Chapter there as a charter member and now serves as its faculty adviser. Violet also takes an active part in San Jose Alumnae Chapter and was previously associated with the alumnae chapters of San Francisco and New York. After convention she will go back to Columbia University for the summer where she is working on her Ed. D. degree.

CEDAR RAPIDS

RUTH CARLSON, pianist, Cedar Rapids Alumnae. (See page 51.)

MINNEAPOLIS

RUBI WENTZEL, cellist and VIRGINIA KRUMBIEGEL, pianist, will represent Minneapolis Alumnae. (See page 51.)



Introducing Our Business Delegates

ATLANTIC



DOROTHY LOWRY
Mu



ANNA MAE DERSHEM
Psi



PATRICIA HURST
Mu Upsilon



SYLVIA BETTS DODD
Phi Gamma



FLORENCE SCAPPATICCI
Phi Upsilon



ROMAINE GARDNER
Phi Omega



SALLY ARMENTRAUT
Epsilon Nu



CAMILLE BUDARZ
Epsilon Psi



LOUISE B. WHENMAN
Boston



LOUISE TITCOMB
Miami



GWENDOLYN THOMAS
New York



KATHARINE SHIRLEY
Philadelphia

BANNETTE GUAY, chapter president, is in her junior year at the New England Conservatory of Music where she is a pupil of Lucille Monaghan. She attended Rhode Island College of Education for two years before winning the Frances Phetteplace Fry scholarship to NEC—a full scholarship amounting to between \$1,200-1,700 per year. Annette received a full tuition scholarship to Tanglewood in ensemble in the summer of 1955, the Chopin Club \$200 award for outstanding pianist in the Student Musician Club, and the Chopin Club incentive awards in 1952 and 1955. She has participated in various concerts and recitals in Rhode Island and Massachusetts, both as soloist and accompanist. A former member of the Handel and Haydn Choral Society of Massachusetts, Tanglewood Festival Chorus, and the NEC chorus, Annette frequently participates on radio broadcasts in Providence. She has also studied cello, participated in an 8-piano team in the Rhode Island Federation of Music



MARY JANE HARVEY
Pittsburgh

Clubs Festival Concert, and was a member of the chorus in Boris Goldovsky's New England Opera Theater production of Berlioz' *The Trojans* in 1955.

MDOROTHY LOWRY is a junior enrolled in Brenau College. She recently was reelected chapter vice-president. Among her activities at Brenau, she is treasurer of Recreation Association Board, treasurer of Senior YWCA Cabinet, Key Club, President of Brenau Chorus, Lorelei Club (junior club of Georgia Federation of Music Clubs), president of Zeta Tau Alpha social fraternity, Panhellenic, Cotillion Club, and participated in all intramural sports. Along with all these activities, Dorothy finds time to teach two piano students as part of her scholarship work. Before attending college, she was president of Junior Music Club of Orlando, member of church choir, Sunday School pianist, and Grand Musician of the Order of Rainbow Girls at Convention.



MARGARET MCCAULEY
Washington

ΨARNA DERSHEM, MΦE president at Bucknell, was most active in music while in high school and during those years studied privately at Bucknell. She was both president and assistant director of her high school chorus and worked with her Student Government as class representative for three years. Arna has always been active in the music of her church and is organist and choir director at the present time. She is working toward a Music Education degree and studies French horn, piano, and voice. Groups in which she participates include band, orchestra, Glee Club, and MΦE. Besides the demands of college life and its many activities, Arna is working her way through college.

MY PATRICIA HURST, Chapter president, is a native of Jackson, Miss. She began her musical study in Jackson as a piano student soon after entering one of the elementary schools, and, continuing with this instrument, added the violin to her mu-

sical study shortly before completion of the fifth grade. As a seventh grader, Patricia became the youngest member in the Jackson Symphony Orchestra. She remained as violinist in the orchestra until her graduation from high school. Other orchestral experiences included membership in the first violin section of the 1948 High School All-Southern Orchestra, meeting in Tampa, Fla.; the Transylvania Music Camp Orchestra in 1950; and the Jackson Opera Guild Orchestra from 1949 to 1953. In 1951 and again in 1953 Patricia appeared with the Mississippi All-State orchestra as violin soloist. She was an active participant in the Junior Division of NFMC contests. She received a national recognition certificate for winning superior ratings for three successive years in the concerto division for piano. In 1951-52 she was elected state vice-president of the National Federation of Music Clubs, and in 1952-53 was elected president of the local club of this organization. While in high school, Patricia was accompanist for two years for the district High School choral festivals held in Vicksburg, Miss., and accompanied two years for Jackson's city-wide production of *The Messiah*. Her senior year she became student director of the Central High School 60-voice A Cappella Choir. Through opportunities for singing in her church, Patricia became interested in

studying voice, and was able to study for a short while before her graduation. A junior this year at the Eastman School of Music, Patricia is majoring in piano. During her freshman and sophomore years she studied voice and violin and played in one of the school's orchestras. This year she is emphasizing voice as her additional applied music, is in the school chorus, and plays violin in the Phi Mu Alpha Symphonette. Patricia was the conductor for this year's Christmas choral program of MT.

ΦΓ SYLVIA BETTS DODD is a native of Frederica, Dela. She studied piano with Helen M. Lang while living in East Orange, N. J., and while at East Orange High School played for the school orchestra and modern dance groups. She attended George Washington University and in Baltimore continued study with Alexander Sklarevski at the Peabody Conservatory of Music. She is teaching piano privately and in classes and was the 1956 chairman of the annual Piano Class Festival for Baltimore county.

ΦΥ FLORENCE SCAPATICCI is a junior at Boston University College of Music with a major in Music Education. Valedictorian of her high school class in Franklin, Mass., she took part in many varied activities in high school: hockey, basketball, badminton, softball, pianist for annual school show, Girls' Glee Club, and

was the Yearbook staff literary editor. In college she is a member of Sigma Alpha Chi, service sorority, Newman Club, Theta Phi Alpha, the Choral Art Society, on the Student Health Committee and last year was Dormitory House Care Committee Chairman. Florence teaches piano at the present time.

ΦΨ NANCY ELECTRA BRODGEN, chapter president, is a junior at Mary Washington College of the U of Virginia. She was graduated from Saint Catherine's School for Girls in Richmond where she was in the Glee Club and did some solo work. In college she is a member of the choir, the Madrigal Singers, the Guild Student Group of AGO, and Alpha Phi Sigma, national honorary scholarship fraternity.

ΦΩ ROMAINE GARDNER was born in Pittsburgh, Pa. Her home is in Glenshaw, Pa., where she received her education at the Shaler Township schools. She studied piano for 10 years, voice for 9 years, and Hammond organ for 2 years. In 1953 she won the North Hills Women's Club Music Scholarship for 2 years.

At present she is a junior Music Education major at Westminster College. Her applied music major is voice (soprano) and minor is piano.

During her three years at Westminster she has



been a member of the vesper choir, concert choir, Christian Youth Fellowship, YWCA, student chapter of National Education Association, past president of Quadrangle (women's independent organization), past secretary of the Christian Service Group, present president of Phi Omega Chapter and director and soloist at the West Middlesex United Presbyterian Church.

EY ELAINE RIORDAN is a junior in Duquesne University's School of Music; her major is Music Education with the study of organ as a main interest. Elaine attended Meadville, Pa., high school and has done a great deal of accompanying for soloists, choral, and dance groups, and at the present time teaches folks dancing at Elizabeth Seton high school, is Duquesne U chapel organist, and teaches organ and piano privately. She plans to teach in elementary schools after graduating.

EY CAMILLE BUDARZ began piano studies at the age of 5; she studied privately in Pittsburgh, and on scholarship from Irene Kaufmann Settlement Music School. After graduation from high school, she was admitted to Juilliard, where she is currently a scholarship student in her third year, working toward a B.S. degree. She performed often on radio and TV in Pittsburgh, plus many recitals and won contests of Pittsburgh Concert Society in 1953 and 1955. She had a

study scholarship for summer 1955 at Chautauqua, with Katherine Bacon. She has given recitals in New York for private organizations, over radio WNYC, Mu Phi Epsilon programs, and at Juilliard. She participated in Pennsylvania District and State Choruses, 1952 and 1953, as soprano soloist.

BOSTON: LOUISE BEACH WHENMAN, graduate of the New England Conservatory, taught voice and piano at Stanstead College, Stanstead, Quebec, two years, became head of the Voice Department, Wilson College, Chambersburg, Pa., and was married in June, 1929. Living in Boston, she continued study in opera, light opera, and oratorio, appeared as soloist with leading symphonies and choral societies, sang lead roles in several light operas, ("Theatre in the Woods," Norwalk, Conn.) and won two major state radio auditions, resulting in guest artist appearances on Atwater Kent and Kate Smith's Hour over Columbia and NBC coast to coast networks from New York. She sang twice at the New York World's Fair. Choir, choral, and operetta directing are her activities now, and she will resume teaching next season while her two children are away at school.

CONNECTICUT VALLEY: MARY FRANCES RYAN REID, chapter past president, was born in Waco, Tex., and started piano lessons as a child under her mother, Virginia Ryan, and also Miss

Georgia Kober of the Sherwood School in Chicago. Mary came to New York in 1922 and continued her studies under Varetta Stepanoff, one of the foremost concert pianists of Europe, and also with Franklin Cannon and Edwin Hughes, all of whom were Leschetizky pupils. She was initiated into Tau Alpha in 1939. She is now living in Wallingford, Conn., where she is teaching locally and bringing up her two young daughters.

MIAMI: LOUISE CAROL TITCOMB was initiated into Lambda Chapter and currently is president of Miami Alumnae. An honor graduate in organ of New England Conservatory, she received her B.M. degree from Ithaca College (Westminster Choir School) with a major in voice. She studied in Fontainebleau and Paris and is a Fellow, American Guild of Organists. Her Master's thesis from Cornell University won the MΦE Musicological Research Contest in 1943. After being active in college teaching and recital work for many years, she is now organist at First Church of Christ Scientist, Miami, and has a private class in voice, organ, and piano.

NEW YORK: GWENDOLYN THOMAS, president, was born and grew up in Seattle, Wash., where she became a member of Tau Chapter at the University of Washington. Following graduation she went to New York to

continue her musical studies and teach. She studied piano with Sascha Gorodnitzki and Ladislav Helfenbein. After getting a Master's degree in Music Education from Teachers' College, Columbia University, she made two overseas tours with the Concert Division of USO Camp Shows. Upon returning to New York she resumed her teaching at the Ann-Reno Teacher Training Institute and at Teachers' College. At present, in addition to her teaching, performing and MΦE activities, she is working toward a Doctor's degree in education.

PHILADELPHIA: KATHARINE SHIRLEY was initiated into Beta Chapter in 1918. After attending Vassar College she continued her musical education at the New England Conservatory of Music, studying piano with Richard Stevens and voice with her father, Clarence B. Shirley. She held positions in two suburban Boston church choirs, one as soprano soloist and the second

in a quartette choir. She was active in the Boston Alumnae Chapter from 1924 to 1950, and during this period served as secretary, treasurer, and president, and also acted as alumnae advisor to Beta Chapter for several years. She was secretary to the principal of Miss Farmer's School of Cookery in Boston for 22 years and for 6 years was associated with the New England Deaconess Hospital. She came to Philadelphia in 1950 to act as secretary to Ruth Row Clutcher during her term of office as National President of MΦE. She affiliated with the Philadelphia Alumnae Chapter in 1952 and has served this chapter as treasurer and will begin her second term as president for the season 1956-57.—VELMA D. SHIPP, *Historian*.

PITTSBURGH: MARY JANE HARVEY, president, first became affiliated with MΦE as a member of Mu Phi Chapter at Baldwin-Wallace College at Berea, O., where she majored in piano with

minors in organ and Spanish. She received her Bachelor of Music degree in June, 1950. Since graduation, she has appeared in recitals both as soloist and accompanist and is active in musical circles throughout the Pittsburgh district. At present she teaches piano in Mt. Lebanon. She is a member of the Mt. Lebanon Women's Club and The Tuesday Musical Club. Mary Jane also enjoys knitting and reading as hobbies.

WASHINGTON: MARGARET MCCAULEY graduated from Arthur Jordan Conservatory of Music and Butler University. She received an assistantship at Ohio University and did graduate work there, followed by teaching in Ohio until her marriage in 1942. The McCauleys moved to Washington in 1950, and Margaret has continued to teach piano, sing in her church choir, and is active in other church work. Three-year-old Kenny monopolizes the rest of Margaret's time.



JUDY HUBER
Gamma



MARY LOU MANE
Phi

GREAT LAKES



MARILYN SOBBE
Mu Xi



JEANETTE DRINKALL
Phi Omicron



LILLIAN JANICKI
Epsilon Lambda



JOAN MCLETCHIE
Epsilon Xi



JANE C. MCARTOR
Ann Arbor



CATHERINE BLY
BENNETT
Chicago



ALICE T. JERABEK
Cleveland



BETTY DARNELL MOORE
Detroit



GRATIA SMITH
Maumee Valley



MABEL HICKS BRADY
Toledo



MARY E. KELLY
Urbana-Champaign



Γ JUDY HUBER, chapter president at the U. of Michigan, is a junior in music education, studying voice with Arlene Sollenberger, and piano with John Kollen. In high school, at Ionia, Mich., Judy won three first-division ratings for piano solos in State Solo Contests. For two summers she attended the three-week music sessions for high school students at Michigan State University, studying flute. At the U. of Michigan, Judy sings with the Choral Union, which performed the *Dauidde Penitente* by Mozart, and the *Gurre-Lieder* by Schonberg, in Ann Arbor's May Festival. During spring vacation she toured the state with the Michigan Singers. Judy is also a member of the Presbyterian Church Choir. As a counselor at Wolverine Girls' State, last summer, she directed a chorus of sixty high school girls. Judy wrote music for the annual Junior Girls' play, and she trained the singing choruses. She also sings in a quartet for "Festival of Song," a music education radio broadcast for Michigan rural schools, directed by a Mu Phi on the University faculty, Edythe Albert. Judy has served

Kappa Delta sorority as both secretary and editor.

Φ MARY LOU MANE was born in Alliance, O., where she attended high school. She belonged to the orchestra, girls' chorus, mixed chorus, Fine Arts, and participated in an operetta and various programs. After her graduation she entered Mount Union College where she is working toward her Bachelor of Music Education degree with a major in voice and minors in violin and piano. She has had about four years of voice, five of violin, and three of piano and has given recitals in her sophomore and junior years. Mary Lou belongs to the Madrigal Group, the orchestra, chorale, a cappella choir, and has participated in presentations of *The Messiah* and *The Childhood of Christ*. She also belongs to the Woman's Independent Society and sings in the choirs of First Christian Church.

ME MARILYN SOBBE, chapter president, has been studying piano with Helen Rauh at the American Conservatory of Music for nine years. She received the degree of Bachelor of Music from the conservatory in June, 1955. She has held several offices in her chapter during the past years including treasurer, vice president, warden, and chorister. Marilyn has appeared on numerous chapter and interchapter Mu Phi Epsilon

concerts. Her current activities include teaching piano at a south side Chicago music school, and accompanying.

MΦ BONZIE GILBERT, a bachelor of Music Education major with concentration on clarinet, is from Norwalk, O. While at Baldwin-Wallace, Bonzie has been very active in musical organizations. She has been a member of the marching band and concert band for 3 years, and sings in the Bach Chorus and Methodist Church choir. Her other campus activities include membership in Kappa Phi, national Methodist college women's club, and she serves as secretary-treasurer for the B-W Red Cross Chapter. As a member of the Intercollegiate Band in 1955 which played for the MENC regional convention in Cleveland, Bonzie played first chair in the second clarinet section. This busy girl also teaches private clarinet lessons and in her "spare time" likes to collect stamps and odd coins.

ΦO JEANETTE DRINKALL, chapter president, is a violinist, who received her training at Western Reserve University with a major in music. Her busy schedule includes private teaching and work at the Cleveland Music School Settlement, where she is the assistant to Josef Gingold, head of the violin department. Jeanette has played in a number of concerts throughout the



city during this season and recently was soloist with the Cleveland Women's Orchestra in the Mozart *Concerto in A Major*. She is also actively engaged in counselling work with the juvenile section of the Fortnightly Musical Club of Cleveland.

ΦΣ ELEANOR WAYMEL, chapter president, completes her junior year at DePaul University in June. She is kept busy and happy teaching piano at Gads Hill, attending music and liberal arts classes, and doing vocal student teaching in the first, second, third, and fourth grades at St. Alphonsus School; she was historian for Phi Sigma last year, and treasurer for the Intersorority Council. Eleanor experienced interesting choral music and drama in high school and hopes to use some of these experiences in her future as a teacher.

ΕΛ LILLIAN LAURINE JANICKI is a junior at Michigan State Normal College, and is working for a BME degree, her major being voice. In high school, she performed as soloist in recitals and at various community functions. She took part in junior and senior class plays and had the lead in the school's production of an operetta. She was a member of a mixed choral group and another select group

known as the "triple-trio" and played flute in the band. In her freshman year at Michigan Normal, Lillian took part in the annual Senior Musical. She has held the position of music chairman for her dormitory for two years, is a valuable member of the college choir and choral union, and has appeared many times as soprano soloist in the music department's public recitals.

ΕΕ JOAN MCLETCHIE, chapter president at the U. of Illinois, is from Oak Park, Ill. While in high school, she studied piano and cello at the Cosmopolitan Conservatory of Music in Chicago, was a member of the Chicago Civic Orchestra, and was principal cellist of the Youth Orchestra of Greater Chicago in her last year of high school. After graduation, she attended Northwestern University on scholarship. Upon transferring to Illinois, she became a member of the University Symphony Orchestra and Sinfonietta and is now studying cello with Peter Farrell. She has served as treasurer of Epsilon Xi, is a member of the Fine Arts Council, and has won University Honors.

ANN ARBOR: JANE CALVERT McARTOR was born and reared in Alliance, O., and graduated from high school there. She received her Bachelor of Public School Music from Westminster College and her Master

of Music Education from U of Michigan. She was initiated into Gamma Chapter and after graduation was supervisor of vocal music in Minerva, O., public schools. She has also taught music in Methodist Sunday School, was a Brownie troop leader, active in Girl Scouts, taught music at Day Camp, and was troop committee member and music consultant for Northside School area. She plays the piano and sings in ensembles and for several years has had a small group of piano pupils. She is a member of Kappa Delta, Lucile B. Conger group of the Michigan Alumnae, Ann Arbor Private Music Teachers Association, Northside PTA, and president of Ann Arbor Alumnae. She has three daughters, all with evidence of musical talent.

CHICAGO: CATHRYN BLY BENNETT at present is organist at Peoples Church, Chicago (Dr. Preston Bradley is the minister), and is heard in broadcasts each Sunday over WJJD. She is a soprano, composer, and arranger. She plays and sings with her husband's company, known as the Frank Bennett Singers. They have sung on TV and radio for many years and have traveled extensively in concert and theatre.

CLEVELAND: ALICE TORBET JERABEK, president, believes that all the nicest things in her life have been connected in some way with her love

for music. She began to study singing at the age of 12 with Opal Hemler. At this time she joined a church choir, and has been singing in church choirs ever since. She continued her musical studies at the conservatory of Ohio Wesleyan University under the guidance of Marcel Roger de Bouzon. There she became a member of Mu Pi Chapter. After a year of post-graduate study at the Cleveland Institute of Music and Western Reserve, she became for several years a music supervisor and high-school teacher. A musical husband and 5 children have kept her very busy since, although she occasionally finds time to further her study at the Institute, coaching with Reuben Caplin. Alice has been a member of the Cleveland Orchestra Chorus since its inception, the "Summer Pops" chorus and the Vesper Hour choral group. A leader of 16 lively Intermediate Scouts, an associate editor of her church paper and active in its life, she usually finds her days brimming over.

DETROIT: BETTY DARNELL MOORE was initiated into Phi Kappa Chapter in 1937. She received her Bachelor of Arts degree from Wayne University and life certificate in Education in 1939, and was a member of the Gold Key and Karyatides, women's honor societies. She was a teacher in the public schools until her marriage in 1943 and now has a

son and daughter. She is active in PTA, being music and program chairman, and is also den mother for the Cub Scouts. Her enthusiasm and keen interest are conveyed to our large alumnae membership.

MAUMEE VALLEY: GRATIA BOICE SMITH, from Toledo, Ohio, began piano lessons in the third grade with Marian Wood Arndt. Then she studied with Emma Endres Kountz. Her first two years in college were spent at Sweet Briar College, Va. During the summers, she continued piano with Mrs. Kountz. She graduated from the U. of Michigan Music School with a Bachelor of Music degree in June, 1949. A piano major, her teacher was Marian Owen. The next three years she taught piano in a private music school in Toledo. During this time she performed often, worked toward her master's degree from the University of Michigan, and was married.

TOLEDO: MABEL HICKS BRADY was born in Toledo and was initiated into Mu Phi Epsilon in 1911. She has had a long, interesting, and exciting career. She began her training in piano and voice at Denison University, Oxford College for Women, and the Toledo Conservatory of Music. She also studied voice with Herbert Witherpoon at Chicago Musical College and George Street in New York. She has been continu-

ously active in music and musical circles since her marriage in 1911. She was soprano soloist in First Congregational Church, then Epworth Methodist and then St. Paul's Methodist Church covering a period continuously from 1911 to 1956. She was also soloist with the Toledo Choral Society, the May Festival at Bowling Green State University, sang with the Elks Quartette for 15 years, the Masonic Quartette for 10 years, and has been a member of the Eurydice club and Monday Musicale for many years.

URBANA - CHAMPAIGN: MARY ELIZABETH WILSON KELLY was active throughout her school years as soloist and performer with many musical organizations. She was concertmaster of the All-State Orchestra and was a scholarship student at Interlochen in 1932 and 1933. From there Mary received a scholarship to the College of Music in Cincinnati and graduated with honors. She is now the wife of Robert Kelly, a composer on the faculty of the U. of Illinois, and has three sons. She is president of the Urbana-Champaign Alumnae Chapter, first violinist of the Community Arts Quartet, and an active member of a music club.



EAST CENTRAL



MIMI ANGSTER
Zeta



MARY M. HAGOPIAN
Kappa



GLORIA LANE
Mu Delta



META ANN KNECHT
Phi Phi



MARILYN RAINS
Epsilon Kappa



JUDY BENSIK
Epsilon Tau



MARY ELLEN SECHLER
Alpha Alpha



HELEN TUTTLE EHLERS
Cincinnati



RUTH GOODSMITH
Columbia



GLORIAN THOMAS
Columbus



MAMIE ERICSON
DUFFORD
Evansville



PHOEBE HARRINGTON
Kansas City



MARJORIE HICKMAN
DROZDA
St. Louis



ANNETTE N. ALBRIGHT
St. Louis County

Z MIMI ANGSTER, chapter president at DePauw U., is from Highland Park, Ill. She studied piano for 12 years under Ethel Marley, graduate of Chicago Conservatory, before she began her college education. She has studied with Glen Sherman and Jean Graham as a piano major at DePauw University. She is a member of motet choir and chapel choir, and is also an active participant in other campus activities. She is a member of YWCA, a board member of Women's Recreational Association, treasurer of her social sorority, Kappa Kappa Gamma, and director of live music for the DePauw radio station, WGRE.

K MARY M. HAGOPIAN, chapter president, is a junior voice major at Jordan College of Music of Butler U., and as a freshman and sophomore she was awarded the MΦE honor medals presented annually to the girl with the highest average in her class in the music school. Her interest in voice began

in high school, and through the aid of scholarships and part-time secretarial work she is working her way through school. She is a member of the Jordan Chorale and Opera Workshop, and soprano soloist at the First Congregational Church. Although the voice curriculum requires only a graduation recital, Mary prepared and was presented last year in a joint recital with an instrumentalist and is currently preparing a full recital for her junior year, which is scheduled for early spring. She has performed for a number of clubs and societies, local TV, and MΦE activities. Mary is also an active member of a local music study club.

MA GLORIA LANE began her vocal studies at the age of 16 with Marguerite LaBlanc in Moncton, N. B., Canada, and placed first in Moncton Music Festival in 1950. She continued her studies at the Conservatory of Music of Kansas City for the past 3 years with

Latonia Barnett. She placed in finals at the Metropolitan Regional Auditions at Tulsa, Okla., in January and was chosen to sing the roles of "Barbarina" in *The Marriage of Figaro* and "Countess Cetrano" in *Rigoletto* in the Spring Opera Festival sponsored by the Kansas City Philharmonic Association. Gloria has also sung in radio, TV, in recitals and at present is soloist at the Country Club Congregational Church in Kansas City.

ΦΘ TILLIE MICHELLETT, chapter president, from Collinsville, Ill., is a junior, majoring in music education with an emphasis in voice. She is a member of MENC, holds the Theodore Presser Music Scholarship and has also been awarded the President's Scholastic Scholarship for the year 1956-57. She is president of the Lindenwood Choir and secretary-treasurer of the Student Council. In 1953, Tillie was a runner-up for the Miss Illinois Title, and was given an award from the

St. Louis Shriners for outstanding work in raising funds for the Crippled Children's hospital.

ΦΦ META ANN KNECHT completed her academic work in January. In June she will receive a Bachelor of Science in dental hygiene. She has been in MΦE for 4 years and this is her second term as president, having served as secretary prior to her election to this office. She is currently a voice student of Stanley Deacon, and has studied with Hardin Van Deursen and Arthur Hackett. She is a member of the Professional Panhellenic Council, a past president of her social sorority and was listed in *Who's Who in American Colleges and Universities* in 1954-55 and 1955-56.

ET ANN DAVIS, chapter vice president, is a junior with a voice major. In high school, at Clinton, Miss., Ann was active in the Beta Club, band, and glee club. She has sung in the stage chorus of the Jackson Opera Guild's annual productions since she was 16. At present, Ann sings quite frequently on local TV programs. She has had 3 shows of her own, and is now soloist with one of the Jackson churches and the Belhaven Chorale. Also, she has directed the Youth Choir at the First Presbyterian Church in Jackson. After graduation next year, Ann plans to continue her study in New York.

EK MARILYN RAINS, chapter president, from West Frankfort, Ill., is a junior at Southern Illinois U., Carbondale. Her major is business in the School of Business and Industry, and she is also working on a 2-year certificate in Music in Liberal Arts and Science. Some of her extra-curricular activities include band, chorus, flute trio, woodwind quintet, Angel's Flight, Commerce Club (secretary), and Vending Machine Board (secretary). On week-ends she teaches flute and directs the Junior Choir at the First Baptist Church in West Frankfort.

ET JUDY BENSIEK, chapter president, is a pianist and cellist, and has won many musical and scholastic honors. She graduated from Normandy High School in St. Louis County as salutatorian of her class. At that time she also received a Missouri U. award as a "student of outstanding scholastic promise." She won a 4-year honor scholarship to Washington U. and this year is also the recipient of the MΦE scholarship. As a pianist, she was a winner of the Young Artists Contest sponsored by the Women's Association of the St. Louis Symphony Society. She has given solo recitals on radio and TV, and in 1955 appeared as soloist at one of the MΦE Lenten Musicales. As a cellist, Judy has played in the Washington University

chamber and opera orchestras and also in the St. Louis Philharmonic Orchestra. She was a member of the orchestra for the American premiere of Britten's "Let's Make an Opera." With her parents and sisters, the Carl Bensiek Family Ensemble, Judy has performed for many religious, civic, and cultural groups in the St. Louis Area. The family appeared at the 1955 MTNA Convention in St. Louis.

AA MARY ELLEN SECHLER, chapter president, is from Warren, O. She entered the Cincinnati Conservatory of Music (now the College-Conservatory of Music) in 1953, was initiated into Upsilon Chapter which recently merged with Mu Omicron of the College of Music to form Alpha Alpha. She was awarded the Otto Luedeking woodwind scholarship (1953) and the Cincinnati Women's Club award (1955). She played with the Youngstown Philharmonic Orchestra (1952-1953). She is studying for the Bachelor of Science and Bachelor of Music degrees in flute with Robert Cavally, and piano with Karin Dayas. She is president of the Women's Council and former corresponding secretary of Alpha Alpha.



CINCINNATI: HELEN TUTTLE EHLERS was a vocal student of Dr. W. S. Sterling and during his residence in Florida, coached with Alma Geiser. She attended the University of Cincinnati and was branch librarian for some years before her marriage. She has served MΦE as president of Alpha Chapter, and over the past 10 years has been elected twice to the office of president of Cincinnati Alumnae.

COLUMBIA: RUTH GOODSMITH was the winner of the 1953 Mu Phi Epsilon \$100 first-prize with the tone poem, "God's Rider," for orchestra and chorus. Her opera, *Lolita*, received special mention at the Ohio Opera Workshop. Published works include "And in the Hanging Gardens" for mixed chorus and orchestra; *Concerto in A Minor* for violincello; several piano solos; du-piano compositions, "Quicksilver" and an arrangement of "Polo-vetsian Dances." A member of the Stephens College music department, she studied at Fontainebleau, New York City, and Milan, Italy. She has degrees from the American Conservatory of Music, Chicago, and Northwestern U. School of Music. She is a member of the National Guild of Piano Teachers,



PEO, Phi Kappa Lambda, and the American Association of University Professors.

COLUMBUS: GLORIAN BUTLER THOMAS is a graduate of the music school of the U. of Washington. She has specialized in harpsichord and has studied with Mme. Isabel Nef at the Conservatoire in Geneva, Switzerland, and attended classes of Mme. Landowska. Glorian's husband, associate director of Battelle Memorial Institute, goes abroad frequently and she has accompanied him on several trips. A recent acquisition is a 2-manual Neupert harpsichord from Germany. She has played with various chamber music groups and last season, along with faculty members of the Ohio State University, presented a Vivaldi concerto for four harpsichords and strings. Glorian's affiliations include the Women's Music Club of Columbus, National Society of Arts and Letters, and AAUW.

EVANSVILLE: MAMIE ERICSON DUFFORD, chapter president, did her undergraduate work at Northwestern U., majoring in piano and history. She joined the Phi Delta Chapter in Columbia, Mo., in 1933. Further formal study included composition with Cecil T. Smith and Robert Delaney, and organ with Charles Galloway, James T. Quarles and Edward Eigenschenk which culminated in a Master's degree from The Ameri-

can Conservatory with a major in theory and organ. She also has the Associate degree in AGO. Along with her teaching and homemaking for her husband and three daughters, who are now grown, she has always been active in civic music affairs. She was organist and choir director at the Sacred Heart Church in Columbia, Mo., at The First Christian Church in Marshall, Mo., and is present with The First Community Congregational Church in Evansville. She has taught at Stephens College at Columbia, Mo., Missouri Valley College at Marshall, Mo., and is now with the music department at Evansville College where her husband is chairman of the physics department.

INDIANAPOLIS: HELEN BINKLEY, chapter president, worked for several years in Chicago and in California as a legal secretary before getting her degree in music at Butler University in Indianapolis. While in Chicago she studied at the American Conservatory and at the Chicago College of Music. She was initiated into Kappa Chapter in 1950 and held the office of treasurer. At the present time she is a member and on the Board of Directors of Indianapolis Matinee Musicale Chorale Section. She has done accompanying in Chicago and in Indianapolis. She enjoys traveling, particularly by ship, and has done some painting.

KANSAS CITY: PHOEBE MOSMAN HARRINGTON, chapter president, received her diploma from the Conservatory of Versailles, Frances. She was a pupil of Maurice Dumesuil and Carl Pryer of Kansas U. She appeared as soloist with the Kansas City Symphony Orchestra under the direction of N. De Rubertro, and has also been heard in concerts sponsored by the Kansas City Alumnae and Mu Delta chapters on their Morning Musical series.

ST. LOUIS: MARJORIE HICKMAN DROZDA is a well-known pianist and has done radio work and accompanying. She was

initiated into Phi Theta Chapter at Lindenwood College where she took her Bachelor degree in piano. She also studied with Elsie Gerak and Leo Miller in St. Louis. She and her husband, who is also musical, have been active supporters of the Civic Music League for several years. They have three musical children: Clifford III, who is a violinist; Marjorie, a dancer; and Jimmie who, at the age of 10, has begun his career as an organist.

ST. LOUIS COUNTY: ANNETTE N. ALBRIGHT, newly elected president of the chapter, is a

violinist, and a music educator, currently teaching in 12 elementary schools in the St. Louis area. She received her Bachelor's degree in Music Theory from Fontbonne College in St. Louis, was initiated into Theta Chapter, then went to the Eastman School of Music for her Master's degree in Music Education. Annette is very active in the musical life of the city of St. Louis: teaching, practicing, studying, and participating in two civic orchestras—the St. Louis Philharmonic, and the Kirkwood Symphony. She is married to a member of the St. Louis Symphony Orchestra.

NORTH CENTRAL



GERAYNE SWANSON
Mu Gamma



SHARRON HILGENBERG
Omega



MARLENE SCHLUETER
Mu Epsilon



MARY MARGARET HOOD
Mu Alpha



PATSY DENLINGER
Mu Tau



SONDRA SHIELDS
Phi Zeta



RUTH CARLSON
Cedar Rapids



AVANELLE POEBLER
Minneapolis



AUDREY HUGELÉN
Phi Iota



LORRAINE JONES
Des Moines



DOROTHY LUNDQUIST
Richfield



ERMA MATTHEIS
Phi Rho



MARGARET WAGGENER
Lincoln

Ω SHARRON J. HILGENBERG, chapter president and a native of Des Moines, will be a senior in music education at Drake U next fall. Her music major is violin, and her academic minors, English, French,

and drama. She was a member and secretary of Alpha Lambda Delta, freshman women's honorary scholastic sorority. She plays first stand of the second violins in the Drake-Des Moines Symphony, gives private vio-

lin lessons, and has won Mu Phi Epsilon, Drake Symphony, and Drake honor scholarships. Composition is a favorite interest, and last year she won honorable mention for a choral work in the Mu Phi Epsilon national composition contest. In addition to her music, she is active in the drama department, and has appeared in four Drake plays.

MA MARY MARGARET HOOD, chapter president, is a Music Education major at Simpson College in Indianola, Iowa. She was born in Mount Ayr,

Iowa, and has studied music since childhood. During high school she studied voice at Grace-land College in Lamoni, played percussion in her school band for eight years, and was in many vocal groups. She received a Div. I rating at the State Contest for her vocal solos for two years. In her freshman and sophomore years at Simpson she gave a vocal recital each year and among college activities are the following: Choir and executive choir council; YWCA; Black-friars; Social Life Committee; Religious Life Committee; Alpha Chi Omega. In addition to her musical activities, Mary Margaret has participated in many dramatic presentations.

MG GERAYNE SWAN-SON, chapter president, is a junior in the U of Nebraska School of Music, majoring in vocal music in education. Her home town is North Platte, Neb. Gerayne has served as historian and corresponding secretary of Mu Gamma. She is active in campus affairs as well as musical groups. Her activities include Pi Beta Phi, music chairman and song director; Alpha Lambda Delta, secretary; Pi Lambda Theta; University Singers; and Collegiate Band. She has also served as a section head for the *Cornhusker* and has worked in the YWCA.

ME MARLENE SCHLUETER began studies at MacPhail

College of Music in February of 1954. She is majoring in Music Education with a minor in both voice and piano. In the past two years, she has received two scholarships from MacPhail College and one Bertha King Scholarship from Mu Epsilon Chapter. She has sung in the MacPhail chorus for two years and has been active in other school and civic activities.

MT PATSY DENLINGER, chapter president, is an applied piano major from Pier-son, Iowa. She transferred to the U of South Dakota as a sophomore and had previously attended Iowa State Teachers College. Patsy has held the office of historian in Mu Tau. She received the Barkle Memorial Scholarship last fall, which is awarded on the basis of ability, scholarship, and need and is given to an upper classman each year. She is also active in the University Choir, Wesley Club, Kappa Phi, and Independents Student's association. Patsy plans to teach vocal music in high school on graduation from college.

MΨ KAY BRUHN is a junior at Coe College and chapter president, received her primary and secondary education at the Preston Consolidated School, Preston, Ia. She enrolled as a student in Coe College and has participated in the following activities: Colonial Ball program, May Fete, YWCA,

Vesper Choir and *Oklahoma* musical. She has served on the YWCA cabinet and the Voorhees House Council (of which she is now vice president). Kay is majoring in music and minoring in French and social studies. Honors conferred upon her while at Coe have been: the Freshman Theory Award given by Mu Psi Chapter of MΦE, Alpha Lambda Delta, Freshman Tenth, Sophomore Honors, and Junior Honors.

ΦZ SONDRAS SHIELDS, vice president of her chapter, is a sophomore at Morningside College Conservatory of Music and her major is in Music Education with a piano major and voice minor. Sondra is an active member of the college choir, band and the Madrigal Singers.

ΦI AUDREY LAVERNE HUGELN, in her junior year at Concordia College, is majoring in music education with a minor in English. She also finds time to devote to her literary society, one of the school choirs, and several piano pupils. Audrey began studying piano at an early age and has won both the freshman and sophomore MΦE scholarships as well as a piano scholarship offered by one of the Fargo music dealers. She has served ΦI as corresponding secretary this year and is looking forward to teaching high school choral music

after graduation next year.

ΦP ERMA MATTHEIS, chapter president, is originally from Hazen, N. D. She started her musical career at the age of 9 by poking out hymns on her grandfather's old reed organ, and started her formal piano training at 14. In high school she was active in chorus and accompanied the Junior High Chorus and girl's sextet. She is now majoring in applied piano at the Minneapolis College of Music, sings in a church choir, and works in the library of *The Minneapolis Star Tribune* at night.

CEDAR RAPIDS: RUTH CARLSON began private piano study at the age of six and continued through high school and college. She graduated from Concordia College, where she was initiated into ΦI chapter, receiving a Bachelor of Music degree with a major in piano, minor in voice. In each of her three last years in college Ruth gave a piano and vocal recitals. She received her Master of Arts degree from U of Iowa and then taught public school music in Stambaugh, Mich., and later, piano in the music department of Duluth (Minn.) State Teachers' College. Her husband is a high school vocal music instructor in Cedar Rapids and they do many programs together at church, school, and in the city. Ruth is a church organist, gives private piano les-

sons, and is a member of the Beethoven Club.

DES MOINES: LORRAINE ZEEUW JONES received her B.Mus. (organ) and M. Mus. (organ) from the U of Michigan and was a member of Gamma Chapter. She studied organ with Freda O'pt Holt Vogan, Palmer Christian, Edwin Hill, Robert Baker, Marshall Bidwell, Frederick Marriott, Charles Peaker, and Carl Weinrich. She studied piano with Mabel Ross Rhead Field. At the U she received a four-year Regents Alumni Scholarship, and was appointed Oliver Ditson Scholar. She was also recipient of the Theodore Presser Award, Mu Phi Epsilon Award, Sigma Alpha Iota Award, and was elected to Pi Kappa Lambda and Alpha Lambda Delta. Before moving to Des Moines, Lorraine served as organist at the Church of Our Father in Detroit. She is at present the organist at St. Paul's Episcopal Church in Des Moines. Her husband, Nathen Jones, flutist, is head of the Band Department at Drake University and Choirmaster at St. Paul's Church.

LINCOLN: MARGARET WAGGENER, chapter president, received her vocal training at the University of Nebraska School of Music, being initiated into MΦE in November, 1935; she later studied at Columbia University. After her marriage in 1938 to Dr. Donald T. Waggenger she moved to

Rochester, Minn., where she took an active part in music and church affairs. While her husband was overseas during World II she taught choral music and science. In 1948 they moved to Lincoln where Margaret took an interest in civic and community affairs. She is Past Matron of Electra chapter No. 8 OES; Grand Adah at Grand chapter session 1955; corresponding secretary of her chapter of PEO; a Lady Deacon in the First Presbyterian Church; active member of the Lincoln Garden Club, and a life member of the Lincoln Women's Club; a member of YWCA; and on the Advisory Board of the Salvation Army; she has also reviewed current books and plays, directed numerous groups in plays, choral reading, choruses and choirs of women singers, and has been a church soloist.

MINNEAPOLIS: AVAN-ELLE JACKSON POEHLER, chapter president, was initiated into Sigma Chapter at Northwestern University. A delegate from Sigma at the Convention at Mills College in 1936, she continued as president of Sigma for another year until her marriage and move to Minneapolis. She became a member of the faculty of MacPhail School and affiliated with Mu Epsilon Chapter. The advent of "junior" cut short the term as president, and she affiliated with the Minneapolis Alumnae chapter 13 years ago. She keeps

more than busy with a little teaching, church work, accompanying and playing, not to mention keeping up with son, Jack, 16, and daughter, Jill, 13, and a husband who is often on the "go." Avanelle holds a Bachelor of Music degree with a major in piano and is a member of Pi Kappa Lambda and Alpha Chi Omega.

RICHFIELD: DOROTHY LUNDQUIST, chapter pres-

ident, studied dancing, dramatics, and piano as a child. At the age of 14, an aunt recognizing she also had vocal talent, took her to a voice teacher. This step marked the beginning of her singing career. Berthold Busch, former leading baritone with the German State Opera, was one of her first teachers. Later, she studied with Maria Montana, former European Opera Star. Dorothy was initiated into Phi

Iota Chapter at Concordia College. She was soloist with the Concordia Choir, Paul Christianson, director, on their European tour as well as on their tour of the eastern states. For three years Dorothy was Minnesota State Chairman Junior Division of Federation of Music Clubs. She sings in Minneapolis and St. Paul Civic Opera Companies and frequently concertizes.



SUE GEWINNER
Xi



JOANN WHITE
Mu Mu

**SOUTH
CENTRAL**



ANN PRINDIVILLE
Mu Rho



JANICE PATTISON
Mu Chi



VERLA JEAN HOKE
Phi Epsilon



BETTY BOB DOVE
Phi Xi



LILLIAN JONES
Phi Tau



CAROL SCRUGGS
Epsilon Epsilon



JOAN ROBERTS
Epsilon Mu



SANDRA HEMMLE
Epsilon Pi



SARAH JANE HERRON
Dallas



BEVERLY NORD
SIMPSON
Denver



JOYCE JONES
Fort Worth



SARASTELLE SIGREST
Oklahoma City





JOYCE GIBSON
Salt Lake City



GEORGIA FULHAGE
Tulsa



LUCINDA SILCOTT
Wichita

II SUE GEWINNER, chapter president, is a junior at the U. of Kansas. She is a cello major and also is piano accompanist for other cellists. In 1952 at a state string clinic Sue was awarded a scholarship to the National Music Camp at Interlochen in the high school division. She returned in 1954 to be on the staff and to play in the university orchestra there. This summer Sue will repeat her experience of last year—counselling at the Midwestern Music Camp on the K U campus where she will also continue to study and give lessons to camp students. Her mother is a member of St. Louis Alumnae and her sister, also a MΦE, is a member of the Kansas City Philharmonic Orchestra.

MK ELAINE GEORGE is a sophomore organ major at the U. of Oklahoma. She studied piano 9 years and graduated from Classen High School in Oklahoma City. She has appeared as organ soloist on numerous programs in the city

and at the University and has participated in the University's variety show, Career Conference, All-University Sing, Now or Never Week, Wesley Foundation, and the YWCA. Other affiliations include Chi Omega and Alpha Lambda Delta, and she is Mu Kappa president.

MM JOANN WHITE, chapter president, is a junior in Music Education at Kansas State College. Joann's major instrument is the piano and she studies with Clarice Painter. Joann is also a member of the college band and orchestra and plans to attend summer school after returning from convention.

MP ANN PRINDIVILLE was born in Manchester, N. H. She graduated from Manchester High School West, where she was pianist for the school orchestra and a member of the girl's glee club. After she moved to Denver, she attended Central Business College and is now a junior at the Lamont School of Music

of the University of Denver, where she is majoring in music education. Her major instrument is piano. She also plays the clarinet in the DU Varsity Band is a member of Lamont Singers and Alpha Lambda Delta. For almost two years Ann has been treasurer of Mu Rho and has recently been elected as president. In addition to music her hobbies are ice skating, tennis, and swimming.

MX JANICE PATTISON is a music education major with concentration in organ at Southern Methodist University. She gave her organ recital in March. Janice serves as vice president of Mu Chi and is also the music school representative to the Student Council.

ΦE VERLA JEAN HOKE, chapter president, is a sophomore at the College of Emporia, where she is a candidate for a B.M.E. degree with a major in voice. She is also studying piano and organ. Her musical activities in-

clude: playing cornet in brass choir and band, playing violin in string ensemble, singing in Chorale and Madrigal group, and accompanying soloists. In addition to being ΦE secretary Verla has served this year as treasurer of her dormitory, secretary of Chorale, and a member of FTA and was the Homecoming Queen's attendant for the sophomore class this past October. Verla's home is Humboldt, Kans.

ΦΞ BETTY BOB DOVE is a native of Waco and will be a senior piano major at Baylor University this fall. She has served as recording secretary for MΦE this past year and will be chorister next year. Last fall she was Phi Xi's musical representative to the District Conference in Denton. In high school Betty Bob received the Paderewski award for 10 years' participation in the National Piano Teachers' Auditions. A pupil of Dean Daniel Sternberg, she accompanies the Baylor Oratorio Chorus and has appeared on many radio and TV programs. She has also served as organist in 2 Waco churches.

ΦT LILLIAN JONES, chapter president, Fort Worth, Texas, is a junior music education student, concentration in piano at North Texas State College School of Music. She holds the position of secretary in the school's chapter of MENC and is a member of Kappa Delta Pi,

national education honorary society. Lillian hopes to teach vocal music in public schools and desires eventually to teach private piano. Her interests other than music include camping and similar outdoor activities.

EE CAROL SCRUGGS, chapter president, is a junior music education major at Texas Christian U. Carol graduated from Highland Park High School in Dallas, Texas, after carrying a major singing role in their production of "The Three Musketeers." Early vocal study was done with Frank Hunter and Rosemary Lawlor, as well as work at Westminster Choir College. At TCU Carol has been active in music with appearances in *Hit the Deck*, *Princess and the Pea*, *Bad Boys in School*, and *One Touch of Venus*; as well as the Fort Worth Civic Opera Association presentations of *Faust*, *Die Fledermaus*, and *La Boheme*. She is a member of the opera workshop and the University Choral Club and is a voice student of John Brigham. As well as having served as treasurer of EE, Carol is now serving as president of the student chapter of MENC. Active in church work, Carol now directs the children's choir at Ridglea Presbyterian Church, Ft. Worth. In addition to her music activities Carol is a member of Alpha Delta Pi, Association for Childhood Education and Sociae, an organization

for junior and senior women.

EM JOAN ROBERTS, chapter president, is a violinist and has studied with Norma Lee Madsen at the U. of Utah. She has played with the U. of Utah Symphony and with the chamber music ensemble. This past year has also found her organizing music for the blind on the campus. Joan received scholastic recognition through membership in Alpha Lambda Delta, and also received the Exchange Club Scholarship which is awarded to a woman of high scholarship who has served her college with distinction. As a campus leader she was president of the sophomore women's service honorary, Spurs, and is currently a member of Cwean, junior women's honorary. Besides her musical activities, Joan is now organizing an advisory service for out-of-town girls and reorganizing the AWS program.

EP SANDRA HEMMLE was born in Dallas, Texas. She graduated from Arlington High School with honors. She was chosen Girl of the Month, received the Arion Music Foundation Award, was student director and president of the choir, and held offices in various organizations. At Texas Tech Sandra is a sophomore music education and voice major. She is a member of the Tech Choir and served as its

secretary last year. She is also a member of Alpha Lambda Delta. Last year she represented MΦE at Tech leadership retreat in Cloudercroft, N. M. At present she is organist at Church of Christ, Scientist and assistant organist at St. John's Methodist Church. In addition to voice her musical training has included piano, organ, and French horn.

EX CAROL PART-
RIDGE, chapter president and charter member of Epsilon Chi, studied piano throughout grammar school but found special satisfaction in the choral groups which performed operettas and music festivals. By the time she reached high school Carol reached completely to vocal development and she had lead parts in the school operettas over a four-year period. In her senior year she performed in a daily TV show in Phoenix after school hours. On graduation from Mesa (Arizona) high school Carol accepted a scholarship from Brigham Young U. and was selected to sing in the A Cappella Choir in her first year, going on tour with the group through neighboring states, to Omaha's Centennial, and for the annual April Conferences of the Latter-Day Saint Church in Salt Lake City. Carol is a member of a quartet which toured last summer through eastern and north-central states as guests artists

with the Delta Phi Chorus. The group will again repeat the show this summer in the deep South for two weeks. She will receive her B.A. degree in Elementary Instruction with a com-posite-minor in Applied Music and German in 1957.

DALLAS: SARAH JANE HERRON's musical career began at her birth-place in Las Animas, Colo. All through junior high and high school she was kept busy playing solos and accompaniments and being organist at First Presbyterian Church. In 1945 Sarah Jane was at the Eastman School of Music, Rochester, N. Y., where four years later she received her B.M. degree with distinction in both organ and piano. Her teachers were Catharine Crozier and George MacNabb. She was awarded the George Eastman Honorary Scholarship and the Rochester Prize Scholarship, and while working on her Master's (in music literature) she held a graduate fellowship. During most of her college years Sarah Jane was organist at the Brighton Presbyterian Church. Mary Hardin-Baylor College in Belton, Texas, was her first teaching position. Here she presented a weekly half-hour piano recital over the college radio station and was pianist in the faculty trio. After two years of teaching at the Knox School in Cooperstown, N. Y., Sarah Jane returned to Texas, locating at the

Hockaday School in Dallas. Here since 1953 she has been active in the Alumnae Chapter, and last year served as co-chairman for the series of Sunday afternoon recitals presented at the Museum of Fine Arts by the MΦE Alumnae Chapter. She is doing advanced piano study with Bomar Cramer of Dallas. In addition to being organist at First Presbyterian Church Sarah Jane is active in the Dallas concert life, giving frequent solo recitals and participating in chamber music programs.

DENVER: BEVERLY NORD SIMPSON, a native of Minnesota, was initiated into Omega Chapter at Drake U. where she majored in voice with Genevieve Wheat Baal. In college she was an active member of music groups, music director of the college radio station, and had her own radio program over a Des Moines station. Following graduation Beverly taught in the public schools of Des Moines and Denver. She has sung solo parts with the Denver Post summer opera, in church choirs and for clubs. She is recording secretary of Delta Zeta, music chairman of The Park Hill Woman's Society, vice president and president-elect of Denver Alumnae. She is the mother of a daughter, Heidi Jill.

FORT WORTH: JOYCE GILSTRAP JONES, president of the Fort Worth Alumnae Chapter, received a Bachelor

of Music degree with highest honors from the University of Texas in 1952, and Master of Music in 1953, majoring in organ. She was a teaching fellow in organ and piano, and a member of Pi Kappa Lambda. She studied organ two summers with Claire Coci, and last summer studied at the Organ Institute in Andover, Mass. In 1953, she was the national first place winner in the organ division, Student Auditions, of the NPMC.

OKLAHOMA CITY: SARASTELLE JONES SIGREST is a graduate of Belhaven College in Jackson, Miss., where she studied with Miguonne Howell Caldwell. She was soloist for the Chorale Ensemble, a member of the Trio and Sextet graduating with honors in voice. In Oklahoma City she has been soloist for her church choir and has sung for many clubs. She is a member of Music and Drama Club and has served as vice president of Oklahoma City Alumnae for 2 years.

SALT LAKE CITY: JOYCE GIBSON, chapter president, was initiated into Epsilon Mu in 1952. She began her musical training with piano lessons as her 7th birthday present. She later studied the cello and the baritone horn because, "the piano just isn't played often enough in the orchestra, and is played very seldom in the concert band." During her high

school and college years she was active as a soloist and accompanist in both Ogden and Salt Lake City Music circles. In her junior year in college she was awarded the Emma Lucy Gates Bowen Memorial Scholarship for further musical training. She received her degree in 1953 from the U. of Utah with a music major and also an elementary and secondary school teaching certificate. Since graduation she has studied the organ and recently gave a recital in the Assembly Hall on world-famous Tabernacle Square. She has taught school in Salt Lake City and at the present time she is in charge of the vocal department of the Lewis Junior High School in Ogden and also has a class of private pupils. She is organist and director of the youth chorus in one of the wards of the Latter-day Saints Church.

WICHITA: LUCINDA BEARD SILCOTT attended Southwestern College at Winfield, Kans., and studied voice under Levi O. Dees. From there she went to the University of Wichita in the position of secretary to Walter Duerksen, head of the School of Music, and studied voice under Harold A. Decker. She joined Phi Pi Chapter at the University. After affiliating with the Wichita Alumnae Chapter, she served 2 years as treasurer. The past year she has been vice president and will be president for the coming

year. She is married and has a two-year-old daughter.

TULSA: GEORGIA MAY DANIELS-FULHAGE, chapter president, majored in piano, with a minor in public School music, at Kansas State College. She has spent most of her time in the business field as a secretary, in Des Moines, Iowa; Wichita, Kans.; and Tulsa, devoting her spare time to the promotion of music activities. She and her husband have two daughters, one an architectural engineer practicing in Dallas, and one a student of architecture at Oklahoma A. & M. College.

PACIFIC



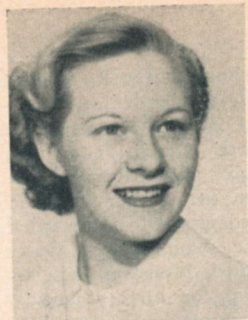
SHARON PEDERSON
Nu



ANN NILSSON
Tau



ELLEN FRANZEN
Mu Beta



PATTY LOU LLOYD
Mu Eta



ELLEN BARNARD
Mu Nu



BARBARA ANDERSON
Phi Lambda



BETTY SWANSON
Phi Mu



JOAN INDIA WOOD
Phi Nu



JOY LARAE FUGATE
Epsilon Eta



MIRIAM BEAL
Epsilon Theta



JUNE PATTON
Epsilon Rho



VOLA GRIBBLE
Los Angeles



HELEN HARPER
CALDWELL
Palo Alto



MARION E. SMALE
Pasadena



JEAN HARPER
Portland



DORIS G. HALE
Salem



VETA R. RIEGEL
San Diego



VIRGINIA S. BEARDSLEY
San Francisco



ROBERTA O'CONNELL
San Jose



SYLVIA TAYLOR
Seattle



BETTINA TAFT
Spokane



DOLORES CORRA
Stockton



EVELYN E. VOTH
Tacoma

SHARON PEDERSEN, chapter president, is a native of Portland, Ore., and became interested in music at about the age of 9 when she began taking piano lessons. In high school she

continued piano study with Lillian Pettibone, a Mu Phi, and outstanding pianist and teacher, giving a recital in her junior and senior years. While in high school she was president of two

clubs, secretary of the Honor Society, and a member of the A Capella Choir. She won music scholarships to Willamette U. and Whitman College, accepting the latter. There she studied piano

with John Ringgold and auditioned to play with the Spokane Symphony. At Whitman she became a member of MΦE. She transferred in her sophomore year to the U. of Oregon as she decided to go into music education. Sharon is also a member of Alpha Phi.

T ANN E. NILSSON began piano lessons at the age of 5. She studies with Berthe Poncy Jacobson at U. of Washington and has performed with the Seattle Symphony Orchestra and the Seattle Philharmonic as well as in solo recitals during her sophomore and junior years in college. Her first solo recital was given at the age of 11 and earlier teachers are Mrs. John Tenwick, Aberdeen, Wn., and Stephen Balogh at Cornish School in Seattle. Ann is much interested in church work, sings in the choir, teaches Sunday school and participates in Lutheran Student Assn. activities. Scholarships which have been awarded to her are: John Hopper Award, Seattle Symphony Orchestra Award, and Lions Club Award. Other affiliations include W-Key (activities honorary), Sigma Epsilon Sigma (grade honorary), and Kappa Kappa Gamma. She plans to graduate as a piano major and then work for a master's degree.

MB ELLEN FRANZEN, chapter president at Washington State College, Pullman, is

from Walla Walla. Her major is humanities, under which music (piano) is the main field of interest, and philosophy the minor. At college Ellen is a member of Kappa Kappa Gamma. After graduation she plans to visit Europe for a while, studying in Vienna if possible.

MH PATTY LOU LLOYD was born in Dayton, Wash. She attended the first through the fourth years of school at Pullman, Wash., after which her family moved to Richmond, Calif., where she continued through school, graduating from Richmond Union High School in June, 1953. She has always enjoyed music and is now in her junior year at the College of the Pacific. She is active in opera, A Cappella Choir—this was her third year on tour—and Mu Phi Epsilon.

MN ELLEN BARNARD, chapter vice president, is a voice-accompanying major in the School of Music at U. of Southern California. A contralto, she is a pupil of Ruth Chamlee, sings with the S. C. Madrigals and A Cappella Choir, and belongs to Alpha Lambda Delta. Ellen lived in southern Iowa until September, 1953, when she moved to Los Angeles. She holds a voice scholarship at S. C. and also had a scholarship to Aspen last summer.

ΦΛ BARBARA ANDERSON is a junior

music education major at Willamette U. On campus, she is MΦE president, song leader of her social sorority, active in the university choir, and in the University Singers. She also entertains various organizations in Salem with vocal solos.

ΦM BETTY SWANSON, chapter president, was born in San Jose, Calif. She studied piano for 9 years with Earl Stimpson of Fresno, Calif. While in high school Betty was a member of A Cappella Choir, Orchestra, and acted as an accompanist. She received the Bank of America gold cup for Fine Arts in the field of music; she also received the Business and Professional Women's Club scholarship to help her musical career. She was also a member of CSF, Worthy Advisor of the Madera Assembly Order of Rainbow For Girls, Grand Musician for the Order of Rainbow for Girls, and is presently a junior music major at San Jose State College, studying piano with William E. Erlendson. Betty has made appearances in many student recitals and in Mu Phi Epsilon's concerts. She is a member of the College A Cappella Choir and is the accompanist for the Men's Glee Club. Other activities include: Kappa Phi, college Methodist Women's Club, Sigma Kappa, and MENC.

ΦN JOAN INDIA WOOD, chapter president at UCLA, is a

sophomore music major, specializing in general secondary education. She plays bassoon in the UCLA Concert Band, and was a member of the All-California High School Orchestra for 2 years. Her duties as assistant director of music at the Westwood Hills Congregational church entail almost a full-time job in themselves. She directs the two children's choirs, and sings in the young people's choir, the adult choir, and the Church quartet. Joan was awarded a gold cup, Bank of America award in high school for being the "outstanding senior in the field of fine arts."

ΘX JUDY SMITH CLARK, chapter president, is a junior at Fresno State College, majoring in Elementary Music Education. She is a native of Fresno, Calif., and was married in August, 1954, to Richard Clark, also a student at Fresno State. Her performance fields are voice and piano, and she is working for a General Elementary Teaching Credential, along with her music major. She has been active in choral work at Fresno State and was a member of the College Girl's Octet for two years. She plans to continue working in the choral music field after graduation.

EΔ CONNIE NEWTON, chapter president at Lewis and Clark College, is an accomplished clarinetist and pianist, having taken part in many high school activi-

ties which included Portland Junior Symphony, and All-State Band. She is a junior and is a member of the college orchestra, band, pep band, and chapel choir. Her other student activities include Amicans, a service honorary, Theta Kappa sorority, and she also served as treasurer of EΔ this past year. Connie hopes to combine her musical interests with Christian missionary work in some way, either with music in missions or in community work.

EH JOY FUGATE, a native of Los Angeles, has always been a music enthusiast. She attended Catholic Girls' High, where she was elected president of the Orchestra and twice was awarded first place cups in flute competition. She was also selected to participate in the All-City Catholic High School Orchestra. Music was not her sole interest however; she was not only a charter member, but held the office of vice president in the Science Club. Two certificates of merit were received by her in annual Science Fairs. She was also a member of the honor service organization. Upon graduation, she attained the high honor of receiving the much coveted Music Medal. Joy is now attending college on a music scholarship. She has represented Pepperdine for 2 years in the Hollywood Bowl Starlight Club and on the Executive Committee of the Philhar-

monic College Forum. She has been both treasurer and vice president of the Epsilon Eta. Her other activities include memberships in the MENC, Calif. Student Teachers' Association, Chemistry Club, Women's Associated Council, Band, Theta Sigma Chi, and the office of treasurer in Chorus. She is now well on her way to attaining a B.A. degree and a Special Secondary Credential in Music.

EΘ MIRIAM BEAL, junior music education major at Linfield College, is from McMinnville, Ore. Miriam has been vice president and is now Epsilon Theta's president. She is a voice and piano student, planning to teach choral music in public schools. She is in the college a capella choir, madrigal singers, and church choir; she is an officer in her social sorority, active in Future Teachers of America; she was a Spur, national sophomore women's honorary, and was chosen Junior Adviser to the 1955-56 Spurs; and is a secretary in the Religion Department of the college.

EP JUNE PATTON, chapter president, lives in Missoula, where she was very active in choral groups and in solo work throughout high school. Now a sophomore at Montana State U., June is in music education, with a vocal major; she is a member of the a capella choir and "Jubileers" (a 20-voice entertainment en-

semble); she is song leader for her sorority, and her other activities include Alpha Phi sorority, Alpha Lambda Delta, and Tanan of Spur (sophomore service honorary). Her main hobby is horseback riding. After graduation, she plans to teach music, preferably in the grades.

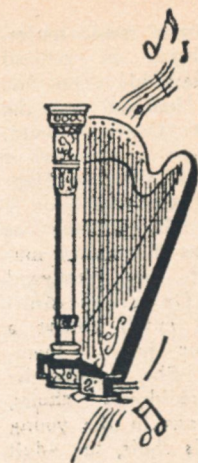
ES PATRICIA GARRING has been active in MΦE since her sophomore year at Pacific Lutheran College. She was president of Epsilon Sigma last year. Her home town is in Burbank, Calif., and during her years at John Burroughs High School in Burbank, she was active in music circles. She was the recipient of a music scholarship from the Mother Singers organization in her home town, and for the past three years has received scholarships from the Helms Foundation. Pat is a junior and is majoring in music with a minor in psychology. For 2 years she was accompanist for the PLC concert chorus. At this time she is singing in the PLC Choir of the West, a 60-voice a cappella group which this year made an extensive tour of California. She is organist for the student body and also for the PLC student congregation. She sings in a small vocal ensemble known on campus as the "Eighth Notes."

EQ ELAINE ANN DUCKERING, chapter president, was born in Escondido, Calif., but moved to San Francisco at an early age

with her family where she then began studying violin under Michael Wexler at the age of 8. She is, at the present time, studying with Naoum Blinder, concertmaster of the San Francisco Symphony Orchestra. She was a member of the Marin Symphony Guild Orchestra under the direction of the late Gastone Usigli. Elaine is now assistant concertmaster of the San Francisco State College Symphony orchestra. A sophomore, she is studying music and elementary education.

BEVERLY HILLS: MARIE ERHART is a graduate of Arizona State Teachers' College, Flagstaff, and of the U of Southern California. She has been a member of MΦE for many years, joining Beverly Hills Alumnae a year after its installation. She is the president of the Beverly Hills Chapter. Marie is a teacher in the Los Angeles City Schools, is a member of MENC and is active in Music Educator's circles in Southern California. She is a past-president of Eta Chapter of Pi Kappa Lambda, a member of Pi Lambda Theta and of Phi Kappa Phi. Marie is not a newcomer at conventions, as she has attended 2 previously. She devotes much time to her musical interests.

EUGENE: MOLLY SMALL HARDIN, reelected to the chapter's presidency, is a fireball of energy and enthusiasm. Oregon-born, she is a graduate of the Oregon



School of Music where she was affiliated with Nu Chapter. In addition to being the mother of three lively youngsters, Molly is very active in Eugene music activities: She pilots the course of the Alumnae chapter, is concertmaster of the Civic Symphony, and plays first violin in the Mu Phi Epsilon Alumnae Quartet. This quartet performed with piano at the last national convention of MΦE in Salt Lake City.—JANET KELSEY, *Historian*.

LONG BEACH: MARIAN PECK VIERSEN, president, joined Phi Pi Chapter at the U of Wichita which she attended for 2 years. She transferred to the U of Nebraska and demitted to the Mu Gamma Chapter of which she was president in her senior year. At Nebraska U Marian studied flute, joined Pi Lambda Theta, Pi Kappa Lambda, met her husband-to-be, received her Master of Music degree, and was married—in 1947.



LOS ANGELES: VOLA GRIBBLE, president, is co-owner and managing editor of *Music of the West Magazine*. She is a contralto soloist having sung in oratorio, opera, radio, and concert. She also teaches a limited number of voice students. Vola has a Bachelor of Music degree from the Chicago Conservatory of Music and a Master of Music degree from the U of Southern California. She is a member of Phi Kappa Lambda, the MTNA, National Association Teachers of Singing, and the Music Teachers' Association of California.

PALO ALTO: HELEN HARPER CALDWELL, reelected president, is a native of Portland, Ore. She studied violin with Franck Eichenlaub at U of Oregon where she affiliated with Nu Chapter of MΦE and with Alpha Delta Pi. She taught and concertized with the Lyceum Tours. She has also taught violin at Berkeley Hall School in Beverly Hills, coached violin with Jan Kubelik and Josef Pistro, and stage department with Josephine Dillon. During the war she was executive chairman of

Children's Aid Division of British War Relief and founded and was president of The Officers and Cadets Club at The Ambassador Hotel. In New York she affiliated with the New York City Alumnae, taught and concertized in Maine four years, and was an active member of the Portland (Maine) Rossini Club. Residing in the San Francisco Peninsula area since 1952, she has been affiliated with San Jose and San Francisco Alumnae Chapters and helped organize the Palo Alto Alumnae Chapter. She is president of Beaux Arts Society, Army and Navy Women's Club, is MΦE representative at Veteran's Administration Hospital, is on the Board of Veterans Administration Voluntary Services as coordinator of all music programs at the hospital and is actively engaged in Music Therapy, Church and Sunday School work.

PASADENA: MARION E. SMALE is the first president of this newly installed chapter. She was initiated into Mu Iota Chapter at the Columbia School of Music in Chicago and is a graduate of Rockford College, Ill. Marion is a staff member at Occidental College and is also engaged in private piano teaching. She is a member of the Tuesday Musicales and Music Arts Clubs in Pasadena and was formerly an officer in the Los Angeles Alumnae Chapter of Mu Phi Epsilon.

PORTLAND: JEAN HARPER, reelected president, majored in piano and organ at the University of Oregon, where she was a member of Nu Chapter. She was an instructor of piano and organ at Pacific University for 3 years. In 1935-36, as president of Portland Alumnae, she attended the MΦE convention as delegate at Mills College. During her 2 years as Dean of the Oregon chapter of AGO, renowned organists Catharine Crozier, Virgil Fox, David Craighead, and George Markey were presented in recitals. She attended the AGO convention in San Francisco as delegate. She is an active church organist, having played in Central Presbyterian Church, Sixth Church of Christ, Scientist, Westminster Presbyterian, and is now at Eighth Church of Christ, Scientist. Besides playing the organ, she teaches piano and organ and devotes much time to her chapter activities. She is a member of Alpha Delta Pi, Beaux Arts Society, and the Eastern Star.

SACRAMENTO: ANN BLUNDELL SCAMMON was born in Sparks, Nev., and began her musical career with the study of piano and violin. After graduating from Sparks High School she attended the U of Nevada for one year and then completed her studies at the College of the Pacific, Stockton, Cal., graduating with honors. While attending COP Ann was

accorded membership in Mu Phi Epsilon, Pi Kappa Lambda, and Phi Kappa Phi. Currently, Ann's activities include membership in the P.E.O. Sisterhood, Sacramento Saturday Club Board of Directors, All Saints Memorial Church Guilds and choir; she is also serving as president of Sacramento Alumnae Chapter. (See page 14.)

SALEM: DORIS GEORGE HALE graduated with a BM degree in piano from Willamette U in 1954 under Ralph Dobbs, after her triplets completed college. At 5 years she began her study of piano and ballet at New England Conservatory of Music, later planning to go abroad to study for the concert stage. But her plans changed when she entered the professional field with her sister Phyllis as a dance team known as "The George Sisters," playing theatres in the larger cities over the United States. At present she teaches piano and musical theory in her private music studio to children from 6 to 16 years. Work on her Master's in piano has begun at Lewis and Clark College under David Campbell. Doris is an ardent worker in MΦE projects, and is serving as first president of the new Salem Alumnae Chapter of Oregon.

SAN DIEGO: VETA R. RIEGEL has lived most of her life in Kansas. She studied at Southwestern College in Winfield and

taught in elementary schools in Garden City. She then attended the U. of Kansas, receiving her B.S. in Education with a music major in 1940 and her M.M.E. in 1941. She was initiated into Xi Chapter while at KU. Veta has attended San Diego State College, taught music at Escondido for two years, and more recently is teaching boys and girls choruses and general music at Dana Jr. High School in San Diego. She has served as secretary, vice president, and president of San Diego Alumnae.

SAN FRANCISCO: VIRGINIA SACK BEARDSLEY, president, is a graduate of the College of the Pacific with a Bachelor of Music degree, and was initiated into Mu Eta Chapter there, where she also was elected to Pi Kappa Lambda. As a teacher of piano, accompanist, and organist, she has been pursuing her career until recently, but now mainly accompanies her infant son, which isn't so musical! Since her husband is a tenor soloist, they appear together in the San Francisco Bay area, and have built their home with music and acoustics in mind.

SAN JOSE: ROBERTA WHITE O'CONNELL, president, is a native of San Jose where she started her musical training at the age of 6. By the time she was 12 she had decided to be a teacher of public school music. As a member of her high school A Cap-

PELLA Choir she attended the National MENC Convention in Los Angeles and sang in the massed chorus of choirs from every state under Max Krone. Roberta graduated from San Jose State College with a BA degree and Special Secondary Credentials having majored in voice and minored in piano. While there she was a member of the A Cappella Choir under William Erlendson and the Madrigal Singers under Maurine Thompson with whom she studied voice. There also she became a member of Phi Mu Chapter. She is now director of the choir and soloist at the First Methodist Church of Campbell, member and past president of the Peninsular Women's Chorus, member of the Las Jardineras Garden Club and teaches piano. Her husband, who also sings and plays the violin, and two lovely daughters, Maureen and Sharon, round out the family group.

SEATTLE: SYLVIA TAYLOR, pianist, teacher, and accompanist, is a graduate of the U. of Washington in music education. Here she was initiated into Tau chapter. She taught on the Jr. High School level for several years before teaching privately. She studied piano with Paul Pierre McNeely, Berthe Poncy Jacobson, and Edith Woodcock. She was a winner of Frances Dickey Memorial Scholarship. Her affiliations include Pi Lambda Theta,

Ladies Musical Club, and Musical Art Society. At present she is doing music therapy work in the Pre-School Spastic Clinic. She was Tau Chapter delegate at the 1940 Cincinnati convention. Mother of 2, she is the wife of a high school instrumental music director.

STOCKTON: DELORES CORRA was graduated from elementary and secondary schools in Ventura. She was active in orchestra and dance band in Junior and Senior High School, playing string bass. She also played bassoon and participated in band and Girls' Glee Club. She graduated from College of the Pacific with a B.A. major in music and General Elementary Credential. Activities in college included: Opera, Band, Orchestra, Mixed Chorus, A Cappella Choir, Women's Choir, Bach Festival Orchestra, Woodwind Ensemble, Pacific Theatre and Orchestras. She is now teaching second grade and vocal and classroom music in Linden Elementary School. Her hus-

band is instrumental music instructor for seven San Joaquin County Schools.

SPOKANE: BETTINA BERKEY TAFT received her early training in Spokane, studied harp at the National Music Camp (Interlochen, Mich.) with Henry J. Williams of the Minneapolis Symphony, and during summers with Alfred Kastner of the Los Angeles Philharmonic. Her Bachelor of Arts in Public School Music and Bachelor of Education degrees were received from Washington State College. Summer vacations were spent on the staff of Radio Station KXLY in Spokane and as featured soloist during dinner hours at the Davenport Hotel. She now has three children: Connie, Stan, Jr., and Pennie. Her husband is head of the Music Department of North Central High School, and Bettina is back teaching again, being employed at Bemiss School.

TACOMA: EVELYN EUSTACE VOTH, presi-

dent, was initiated into Xi Chapter at the U. of Kansas. She started piano lessons with her mother at the age of 5 and continued until entering the University where she studied piano with Carl Preyer and organ with Lee S. Green and Charles S. Skilton. During high school she played flute in the orchestra, sang in Girls' Glee Club, accompanied Boys' Glee Club, and played a piano solo in the Kansas State music competition. She has taught music in public and private schools of Kansas. At the Bournemouth School of Music in England she studied piano under Elsie Hankins, protegee of Solomon, for one winter and four summer sessions. Evelyn has been an active member of Tacoma Chapter since its beginning and chartering at the Seattle convention. In addition to performing the myriad duties of two-fold motherhood she teaches piano and flute privately, is organist at McChord Air Force Base Chapel where husband Rudy is choir director, and is an active member of PEO.

The following represent their chapters as business delegates:

ROCHESTER ALUMNAE: Gladys Rossdeutscher

PHI KAPPA: Carol C. Clark

SIGMA: Marcia Dietz, vice president

EVANSTON-NORTH SHORE ALUMNAE: Elaine Carter

MU PI: Althea Speelman

EPSILON ZETA: Kay McCastlain

EPSILON PHI: Estelle Gish

EPSILON IOTA: Jean Carder

ALPHA BETA: Cheril Slayton

NOTES



About Mu Phis . . .

PHI GAMMA held a musicale in February at the home of Mrs. C. Albert Kupers and two of our patrons' compositions were performed in observation of National Music Week. The two composers, Mrs. Katherine Lucke and Mr. Howard Thatcher, were honored at the "Parade of American Music" festival sponsored by the Baltimore Music Club. In January another musicale was held at the home of Dr. and Mrs. Reginald Stewart. We are looking forward to co-hosting the opening night of the convention. Ann Lane Wilson gave a violin recital at the Mount Vernon Place Methodist Church in the Chamber Music Series sponsored by the church. . . . **PHI UPSILON** sponsored an interesting concert on Feb. 23 by Edith Stearns, pianist, which included the first performance of the *Christopher Suite*, Opus 23, by Klaus George Roy (of the faculty). From the proceeds we were able to contribute to the Blind and Gads Hill projects. The reception which followed was given by our patronesses, Mrs. Norden and Mrs. Arslanian. Our annual program of American music was given on April 25, and featured many compositions by Blythe Owen. Shirley Merrill, Mary Ellen Cunningham, Phyllis Feer, and Ruth Foss will give Senior Recitals in piano this spring. Helen Coska gave a recital on Feb. 25 in Litchfield, Conn., and Regina Lopes performed in New Bedford, Mass., on March 16. Several chapter members recently toured with Boston U Glee Clubs and with the Choral Art Society.—**RUTH FOSS**, *Historian*. . . . **PHI OMEGA** had as their guest speaker on Feb. 1, Mr. Huyck, a voice instructor at Westminster College who spoke to the group on opera, stressing Puccini. On March 7 the program of American Music was given, with Florence Craig in charge. The program centered around Aaron Copland and the *Appalachian Spring*. April 4 was the date for our

outside service project, and on April 24, the annual Spring Recital was held. The year will end with a picnic at the home of Mrs. Lois Hopkins, one of our patronesses. Besides these group activities, many of our members have been participating in individual recitals. Three of our members attended Pennsylvania Collegiate Chorus Festival at Drexel U Feb. 25-27. The week of Feb. 27 to March 2 was Mozart week here on campus, and Mozart programs were presented in chapel each day. Lorraine Adams, Florence Craig, Marilyn Elkins, Sydne Falk, Roberta Foster, Carol Gallwits, Romaine Gardner, Mary Alice Hakes, and Margaret Ihnat participated in these chapels.—**BARBARA M. RANKIN**, *Historian*. . . . **PHI OMICRON** members met at the home of Edith West on Feb. 13 where plans were made for the coming Rush Tea. Our tax stamp chairman, Margaret Heller, reported that we had received \$35.00 for tax stamps. This really can prove to be an excellent source of revenue. Our program at this meeting was especially interesting. Dr. Edward G. Evans, of Western Reserve U., talked on "Trends in Modern American Music." We were each given a mimeographed sheet showing how the Schoenberg 12-tone system of writing can be used. On Feb. 19 our Rush Tea took place at the Music House on the campus. Irene Meyer and Mary Eileen Fogarty sang an operatic duet, accompanied by Gretchen Garnett, and Jeanette Drinkall played a group of violin solos, accompanied by Gladys Gingold. We pledged 11 new members on March 19 at the home of Margaret Heller. Electra Dukas Cardona will be moving to Pittsburgh at the end of this school year. Her husband has joined the faculty of Chatham College in that city where he will teach languages. There must be many Mu Phis in Cleveland, for whenever a musical program is planned it so often includes members. On Jan. 27 the Three Arts

Club met in Lakewood at the Clifton Club and the program was entirely MΦE without any afthought. Helen Leino Cartmell sang two groups of solos accompanied by Joan Terr Ronis and Jeanette Drinkall played two violin solo groups accompanied by Gladys Gingold, all Mu Phis!—**GLADYS GINGOLD**, *Historian*. . . . **EPSILON LAMBDA** is presently planning and working on its Spring American Music Concert. One selection on the program was written by Dorothy James, Chapter Adviser. Another highlight of the concert will be the numbers commemorating Stephen Foster. The pledging this semester started with a very successful open house. A week later an informal party was given and everyone came in musical costume. The chapter is adding a large number to its group this spring. Epsilon Lambda, serving others through music, has been visiting the Veterans Hospital near the college quite often. The girls sang in the wards there at Christmas-time and since then have returned regularly. There is much satisfaction, we find, in this kind of service. In February, at the Stoic Honor Organization banquet, a MΦE woodwind trio provided the after dinner entertainment.—**GRACE GRISSEL**, *Historian*. . . . **EVANSTON-NORTH SHORE ALUMNAE** find that one of their successful sources of revenue comes from their White Elephant Sale at which Laura Thompson is usually the auctioneer. Elizabeth Kidd is back from her year's leave where she studied primitive music in Greece, interviewing shepherds in the fields and tape recording their playing and singing. She also brought their quaint instruments home for demonstrations. Helen Shockley is "half" of the fine piano team she makes with her husband, an instructor at Northwestern U. When she isn't teaching strings at Lincoln School in Skokie, Ill., Irene Taylor refinishes antique furniture. Ruth Thomas presented her A Cappella group from Lake Forest College in a program of early English Madrigals on TV at Christmas. Harriet Moe taught a course in Renaissance Music at the U of Chicago this past year. Laura Thompson still has vivid memories of her visit to Beethoven's home in Bonn

and to Wagner's home "Tribshen" in Lucerne and hearing *Rigoletto* in an outdoor amphitheatre in Naples last summer.—**LAURA THOMPSON**. . . . **MU DELTA'S** Beverly Evans, soprano, appeared in senior recital Jan. 15 in Russell Stover Memorial Auditorium of Grant Hall at the Conservatory. Mu Delta sisters are women of many talents. Shirley Frisbey Generaux recently appeared in the role of "Titania," queen of the fairies, in the performance of Shakespeare's *Midsummer Night's Dream*, presented by the drama department of the Conservatory. Also appearing was Patricia Wooster as "Puck." Patricia has since been pledged to Mu Delta. One of the highlights of the scholastic year was our "American Music" program, presented in the form of a morning convocation at the Conservatory Feb. 8. Our best fortune of the year has been the pledging of seven lovely girls. Mu Delta was privileged to be asked to assist in the sponsorship of a recent benefit concert given by the head of the Conservatory violin department, Mr. Eugene Stoia. In so doing, we also share in the "Scholarship Profits." Participating in the assisting ensemble were pledges Shirley Decker and Patricia Stinecipher. On March 20 the yearly production of the opera workshop was given and included Act III of *Rigoletto*, Act II of *Carmen*, and Act III of *Tales of Hoffman*. Appearing in major roles were Claire Jones, Shirley Generaux, Mary Anna Seuser, actives, and pledge Billie Stoenner. Patricia Wooster, soprano, was selected during recent auditions, to take two minor roles in the forthcoming opera festival in Kansas City. One of these will be "Barbarina" in *The Marriage of Figaro* and the other the "Page" in *Rigoletto*. Pat will also be heard in junior recital in May of this year. Shirley Decker, violinist, a recent pledge, assisted David Dodds, tenor, in graduate recital at Friends U., Wichita, April 7. The annual Conservatory orchestra program



included numbers by Beverly Evans and Mary Anna Seuser, mezzo-soprano. Mary Anna will also be heard on May 6 in solo recital as partial requirement for the degree Master of Music. Mu Delta has been active in support of all alumnae functions, especially the Morning Musicals. Following each program this season, chapter members have assisted in the serving of a luncheon in the Conservatory cafeteria, and as a result, shared in the profits.—MARY ANNA SEUSER, *Historian*. . . . OMEGA Chapter gave a tea honoring 15 to 20 foreign students who were on the Drake U. campus as a part of the International Foreign Students Weekend Feb. 11, 1956. A short musical program was presented by Eileen Damman, newly initiated active, piano; Carol Larsen, senior, voice; Shirley Anderson, junior, bassoon; and Marianne Schneider, graduate, voice. Mary Beth Soth, president, led a discussion on how music contributes to the campus activities and college life at Drake University, kinds of activities and projects a professional group does and then there was a guided tour of the Fine Arts College and other buildings of interest on the Drake campus. Three members of active chapter at Drake University in Des Moines, Iowa, have been awarded \$50 Scholarships by the Des Moines Alumnae Chapter. The girls are Carol Larsen, Sharon Hilgenberg, and Gay Stevenson. The awards given on the basis of outstanding service to the chapter and individual merit, are presented annually by the alumnae chapter at a tea given in honor of the Omega Chapter. Carol Larsen, a senior, is a voice major who will receive a Bachelor of Church Music degree this spring. She is a member of the Drake Choir and University Chorus and not only this year but in previous years has had roles in "Night of Opera." Last fall Carol appeared as guest soloist with the Phi Mu Alpha Chorus at their Fall Recital in singing the Brahms "Contralto Rhapsody" and Schubert's "Ständchen." Sharon Hilgenberg, a junior, is a violin major working toward a Bachelor of Music Education degree. She received honorable mention for her choral work in the Mu Phi Epsilon national composition contest.

Sharon plays in the Des Moines Symphony and in chamber groups which make numerous appearances here in the city. Gay Stevenson, a junior, is a voice major working toward a Bachelor of Music Education degree. She is a member of the Drake Choir and University Chorus and had a role in this spring's production "Night of Opera." . . . MU PSI has recently pledged five girls of whom it is very proud: Mavee Lubbers, Emma Lou Wiels, Fran Chaloupka, Marilyn Schneider, and Sharon Long. Along with magazine subscriptions they are collecting music for another bundle to be sent later this spring to the Far East. . . . MINNEAPOLIS ALUMNAE is proud of Mary Ellen Jenkins who won the 1956 Regional Metropolitan Auditions in February. Mary Ellen's mother-in-law, Louise Lupien Jenkins, a patroness of ME and long prominent in musical circles in Minneapolis, is also Mary Ellen's teacher and accompanist, and was at the piano both in Minneapolis and New York. On Feb. 16 Mary Ellen performed on a Thursday Musical program and that evening was soloist at a Mozart Festival at the Minneapolis Institute of Arts. She has had lead roles in both Minneapolis and St. Paul Civic Opera Companies and in St. Paul has had her name placed in the Hall of Fame of Names. A mother of two small children, she is now at home carrying on with her many singing jobs plus caring for her family. Orpha and Leonard Galloway are a husband and wife team who are fairly new in Minneapolis. Orpha, a pianist, has been busy composing an Easter Cantata which is to be sung by a South Dakota group on its completion. She and her husband, a tenor soloist, performed together extensively as a team on radio, TV, and Campus Shows at the U. of South Dakota. . . . XI Chapter's American Music recital consisted of: Woodwind quintet—"Fuging Tune" by Luuning; "Flute Sonatina" by Stevens, played by Mary Sharon Cole; piano solo by Dello Joio, Shirley Brown; cello solo by Dello Joio, Sue Gewinner; clarinet and bassoon duet, "Prelude and Fugue" by Mrs. K. Mulky Warren. This was written especially for this chapter by our former adviser. It was performed

by Mary Ella Symes and Mary Mason; a vocal ensemble sang several numbers written by John Pozdro and George Green, who are on the faculty at Kansas U. They also wrote these numbers especially for Xi Chapter. At the present time Xi has 22 members and seven to be initiated. Our president, Sue Gewinner, has just recently entered a contest in Tulsa sponsored by the Tulsa Philharmonic Society. A cello major from Webster Grove, Mo., Sue was a finalist in the string division and therefore won a cash prize of \$100. Her accompanist was Mary Ann Le Moine. Her instructor is Raymond Stuhl, associate professor of cello at Kansas U. Our chapter has been active during the past few months to carry out our "five point program." We have given several programs for the mental patients at Winter General Hospital in Topeka, have sent a considerable amount of music overseas, and various things of this nature. Merrilyn Coleman had the lead in *Carousel* which was given at the University in February. Many of our girls were in the cast and orchestra and several others were in the cast for *Così fan Tutte* which was presented in April.—MARY ANN LE MOINE, *Historian*. . . . MU RHO had a "musical" costume party as one of the features of Rush Week. There were many interesting costumes, such as "Carmen," "Pagliacci," "Curly" from *Oklahoma*, "Annie" in *Annie Get Your Gun*, "Madame Butterfly," "Siebel" from *Faust*, etc. During this quarter, the chapter has been selling coffee at intermissions of the Senior and Faculty Recitals, and also are ushering for the recitals. We have also ushered for all of the University Theatre productions. One of our requirements this quarter was that all Mu Rho girls must attend the Careers Day speech given by Mrs. Herbert Witherspoon whose husband was General Manager of the Metropolitan Opera for many years. Mrs. Witherspoon is now head of the Witherspoon-Grimes Enterprise, Inc., Denver. The following gave Junior Recitals during Spring Quarter: Peggy Sharp, Ann Prindiville, Judy Willson, and Sally Manion, all pianists; Charlotte Worley and Mary Di Pilla, clarinet; and Marilyn Winters, voice. Juanita Dieterich will give her senior

organ recital during Summer Quarter. Five pounds of music was sent to the Philippines during Winter Quarter. Some music was also sent to organ student Eva-Maria von Falkenstein in Wurttemberg, Germany. Juanita Dieterich enjoyed a brief visit with her teacher, internationally famed harpist Mildred Dilling, in March. Dolly Simmerman was among the 18 girls and 12 boys from Denver U. who were named to *Who's Who in American Colleges and Universities*.—JUANITA E. DIETERICH, *Historian*. . . . PHI TAU has instituted a free tutorship program of music for children of the Cumberland Presbyterian Children's Home, Denton, Texas, who desire private instruction in piano and voice. The program is under the direction of Lillian Jones, newly-elected president of the group, and John Thornberry, faculty sponsor. Tutors chosen from the sorority are Nancy McWilliams, piano; Alta Mullins and Joan Shiflet, vocalists. Other members of the chapter will furnish transportation and literature for the teaching project. Shortly after the opening of the spring semester Phi Tau held a retreat and officer's installation and training period at the home of Lillian Jones in Ft. Worth. During a workshop period following the installation, plans were laid for spring rush. It was decided that a small booklet should be made concerning MΦE and its meaning and importance to the professional musician to better enable rushees to understand our sorority. Nancy McWilliams, senior music education major, has set the MΦE Creed to four-part close harmony. The group also has been working toward the formation of a MΦE chorus which will perform American music.—ALTA MULLINS. . . . MU BETA and the Washington State College chapter of Phi Mu Alpha Sinfonia combined resources for an American music concert. Soloists performed numbers by composers that ranged from Griffes to Foster. One interesting number was the Sonata for Trombone and Piano written by George McKay, an alumnus of WSC. To finish the program nicely was a combined chorus of Mu Phi and Phi Mu directed by Dr. Kemble Stout, chairman of the Department of Music. One of these

three numbers, a four-part madrigal by Don Truesdell of the music faculty, "Summer Soon," made its first public appearance. Pat Franklin, soprano, gave a senior recital on Feb. 21, accompanied by Ted Rehl, a newcomer to the music faculty. Pat will travel to Vienna in August for further study. An added attraction this year was a reception given in honor of Arthur Fiedler, the Boston Pops Orchestra, and Ruth Slenczynska, piano soloist with the group. The function followed a concert sponsored by the Pullman Community Concert Association and the Associated Students of the State College of Washington. Over 200 attended the informal coffee hour to chat with Mr. Fiedler, Miss Slenczynska, and the orchestra members. In the course of the afternoon Mr. Fiedler, an ardent fireman, was made an honorary member of both the Pullman and campus fire departments by the Pullman mayor, Mr. Kester Grimes. On April 10, a silver tea was given featuring a 45-minute program by members of Mu Beta. An unusual attraction was a clarinet ensemble composed of three B^b clarinets and one bass clarinet.—WILMA RAYMOND SPRAGUE, *Historian*. . . . MU NU Chapter held its Patrons' Tea at the home of Chancellor Rufus B. von Klein-Smid in February. Later this spring the chapter sponsored a \$100 scholarship which was given to a girl of outstanding musical performance. The chapter also gave their annual program of American music, featuring the compositions of students and faculty of USC. Twenty-four new girls have been initiated into Mu Nu, among whom is the outstanding artist, Muriel Kerr, who performed Chopin's *Piano Concerto No. 2 in F Minor* with the Los Angeles Philharmonic last March. Many of the girls are in such honoraries as Pi Kappa Lambda, music honorary, Alpha Lambda Delta, freshman girls' honorary, Pi Lambda Theta, education honorary, and Phi Kappa Phi. Also eight members have given student recitals this year. Linda Johnston, Mu Nu treasurer, will be choir counselor at the Idlewild light opera workshop this August. Nasrin Farrokh, international student from Persia, was soloist at the Philharmonic United Nations program last October. Lili

Lampl, wife of an SC music professor, teachers the recorder at SC. Ann Clark is a member of the Rudy Saltzer Singers, which group is famed for the Nativity Play in Santa Monica, Calif., at Christmas. Virginia Bitar, student of William Vennard, has been extremely active in the SC operas. She sang "Carmela" in *The Saint of Bleeker Street* by Menotti, "Despina" from Mozart's *Così fan Tutte*, and "Zerlina" from *Don Giovanni* by Mozart. As of this year the Mu Nu Chapter has grown to an active membership of 40 girls. . . . PHI LAMBDA enjoyed learning more of the work M^ΦE is doing at Gads Hill when visited by Rosalie Speciale. At Christmas time a recital sponsored by Phi Lambda featured various members of the music school. Ushering for Willamette's Distinguished Artists concert series and holding receptions following student recitals have been two projects enjoyed this year. Seven members of Phi Lambda participated in the contemporary music program held March 12.—DIANE BURKLAND, *Historian*. . . . LOS ANGELES ALUMNAE enjoyed a visit from Rosalie Speciale at the February meeting. It was a pleasure to have her with us and we enjoyed as well as gained much information from her talk on Gads Hill. The program presented by Clara Benson, chairman, was a tribute to Mozart. Scenes from his *Così fan Tutte* were given in costume by sopranos Esther McQuie, Lois Craft, and Meg Seno with Ethel Gabriel doing the narrations and Edith Hibig and Clara Benson at the piano. We are especially grateful to Esther McQuie who came all the way from Texas to sing for us.—VIVIAN P. JOHNSON, *Historian*. . . . SACRAMENTO ALUMNAE have enjoyed a year of many activities and experiences. Our activities began with a pot-luck supper and swimming party at the home of Marjorie Lawrence. A preview of plans for the year was presented by our president, Ann Scammon. In November, we were pleased to welcome Rosalie Speciale while she was on her official inspection tour. The day's activities included an informal luncheon for all officers followed by an afternoon meeting, musical, and tea. The musical was presented by our two excellent

harpists, Mary Bremner and Murette Henderson. Special guests for the tea were Dr. and Mrs. Frederick Westphal. He is the chairman of the Music Department, Sacramento State College. Other highlights should include the celebration of the chapter's birthday in January. Members attended a dessert party and then a concert given by the Sacramento Philharmonic Orchestra and Sacramento Choral Society to mark this occasion. Further social activities for the balance of the year include an informal dinner party and musical at which time husbands and friends will be guests, and the annual June luncheon for members only. The five-point program has been largely carried out through various means and will be supplemented between now and the summer. We presented a program of all-American music at one of our spring meetings.—LENORA GEBBETT, *Historian*.

. . . TACOMA ALUMNAE members were the first group to carol during the Christmas season at our new Mary Bridge Children's Hospital. A short business meeting and coffee hour followed at the home of Bette Margelli, with Virginia Birkeland assisting. In January we met at the home of Joy Patching with Evelyn Voth assisting. Jacques Radant accompanied by Bette Margelli played several flute solos. Our February meeting was held prior to the annual Recognition Recital which is now sponsored by the Tacoma Arts for Youth Council. We attended the recital as a group. Music of the Romantic Period was described and sung by Margaret Myles at our March meeting in the home of Mary Buchanan. We are looking forward to several summer meetings and the report of our president on Convention. — VIRGINIA MORRISON, *Historian*.



Epsilon Xi Chapter officers and Mrs. David Dodds Henry, wife of the President of the U. of Illinois, on the occasion of her installation as a patroness of Epsilon Xi.

In

MEMORIAM

MARGARET NOTZ STEINMETZ



△ MARGARET NOTZ STEINMETZ, Portland Alumnae, died in Portland on Dec. 20, 1955, as a result of a cerebral hemorrhage. She was professor of piano at Lewis and Clark College, having joined the staff in 1940 when it was known as Albany College, and continuing until 1953 when illness forced her retirement. Her guidance inspired the organization of women music students and it was at her home in March, 1947, that the first pledge class of Epsilon Delta Chapter was initiated. She served as faculty adviser to the chapter, giving unstintingly of her time, thought, and hospitality at all times.

She studied pipe organ with William Robinson Boone of Portland, then went to New York City where

she studied with Abby Whiteside and Josef Lhevinne. For several seasons in New York City and in Europe she assisted Yeatman Griffith, vocal teacher. She was nationally known as voice coach and accompanist, having assisted many leading singers during their concert tours in the Northwest. Plans are being made to have a room dedicated in her name in the new John Stark Evans Music Building now under construction on the Lewis and Clark College campus. In addition to Mu Phi Epsilon, she was an active member and a past president of the Portland Beaux Arts Society.

In the words of her family, "We shall miss her, more than words can tell, but we are sincerely grateful to have shared so intimately her devotion and love, and we, like all others who have received her guidance and affection, are better equipped to fulfill our earthly missions." These are the thoughts of all who knew her, and especially her sisters in Mu Phi Epsilon.

MME. GILDEROY SCOTT

△ MME. GILDEROY SCOTT, Washington, D. C., Alumnae, died in Washington on Dec. 31, 1955. Born in London, Mme. Scott formerly sang with the Moody-Manners Opera Company and was vocal soloist for churches in New York, Chicago, and the District of Columbia. She was initiated into Mu Gamma Chap-

ter in May, 1920, and in private life was Mrs. Adrian Newens.

MAURINE WHITE FISHER

△ MAURINE WHITE FISHER, Mu Alpha initiate in 1935, died on Sept. 24, 1955, in Glendale, Calif.

HELEN FOOTE MUELLER



△ HELEN FOOTE MUELLER died in Minneapolis on March 14, 1956. A gifted, loyal member of MΦE, she served her beloved sorority in many ways and places. Initiated into Iota Alpha Chapter in Chicago,

she transferred to Pi Chapter in Appleton, Wis., when she joined the voice and music history faculty of Lawrence College there. Later, in Minneapolis, while teaching voice in the MacPhail School of Music and the Minneapolis College of Music, she was a member of Mu Epsilon Chapter and later of the Minneapolis Alumnae Chapter. Helen served on the National Council of MΦE as National Vice President—served with enthusiasm, loyalty, and efficiency which defies description. To the writer, her National President, she was always a tower of strength, a beautiful source of wisdom, infallible good judgment and of deep and sympathetic understanding.—BERTHA (KING) VAN TILBURG.

EDITOR'S NOTE: Memories that we in the Twin Cities treasure about Helen is her modesty, her keen mind, wonderful sense of humor, and her willingness to lend a helping hand. Her interest in the progress of the college chapters was always much appreciated. We are proud to remember that she was largely responsible for instigating what we now know as our Musicological Research Contest and we look back fondly on our Founders Day Banquets which were not considered complete without Helen acting as toastmaster. Memorials are being received by Minneapolis Alumnae Chapter for the Helen Mueller Scholarship Fund.

... Statistically Speaking ...

MARRIAGES

MU NU: Joyce Armor to Franz Worth, June, 1955. Anne Clements to Knute Clark, December, 1955. Dorothy Huang to Henry Hwang, June, 1955. Esther Kaplan to Malcolm Rosenbaum, Au-

gust, 1955. Donna Risley to Charles Morgan, December, 1954. Carol Rives to David Leighton, September, 1955. PHI GAMMA: Sandra Cohen (Mrs. Lerner), December, 1955. Ellen Barlag

(Mrs. Donald King), February 10, 1956. Irene James (Mrs. Raymond Hardy), December 17, 1955.
EPSILON DELTA: Loris Loree to Roy

Shearer. Shirley Nelson to Lawrence Morrell. Marie Edmundson to William Dieter. Diane McKenzie to Roy Marvin. Patricia Madden to Warren Able.

BIRTHS

PHI SIGMA: A daughter, Diane Marie, to Mr. and Mrs. Ray M. Wainwright (Nelly B. Walter), Oct. 15, 1955.

EPSILON THETA: A son, Mark Allen, to Mr. and Mrs. John W. Carlson (Ellen Louise Stone), Dec. 29, 1955.

PHILADELPHIA ALUMNAE: A daughter, Kimberly, to Mr. and Mrs. Albert M. Warner (Maryjane Albright), Oct. 20, 1955.

CEDAR RAPIDS ALUMNAE: A daughter, Sarah, to Mr. and Mrs. Harold Atkins (Kathleen Kahler Rammelsberg), Atkins, Iowa, in July. A son, James Harlen, to Mr. and Mrs. W. H. King (Marjorie Christiansen), in October. A son to Mr. and Mrs. Keith Whitmer (Barbara Teeters), in December.

CLEVELAND ALUMNAE: A daughter, Julie Ann, to Mr. and Mrs. George (Sophie Soeffker) Herzberger, on June 5, 1955.

SAN JOSE ALUMNAE: A daughter, Jan Karen, to Mr. and Mrs. W. Wayne Sorensen (Katharine Fuller), at San Jose, Calif.

WICHITA ALUMNAE: A son, Donald Charles, to Mr. and Mrs. Pete Poschen (Dorothy Hurst), Oct. 9, 1955. A daughter, Susan Leslie, to Mr. and Mrs. James Starkey (Sally Clifton), July 25, 1955. A daughter, Vanessa Ruth, to Mr. and Mrs. Corwin Smith (Phyllis Danielson).

PHI GAMMA: A daughter, Eva Marie, April 24, 1955, to Mr. and Mrs. J. M. Anderson (Eva Frantz).

PHI OMICRON: A daughter, Feb. 13, 1956, to Mr. and Mrs. Edwin Homburg (Clare Davis).

INDIANAPOLIS ALUMNAE: A daughter, Gaylon Sue, November 26, 1955, to Mr. and Mrs. Regis Decker (Barbara Jean McDonald).

Song of Convention

by

ELLEN K. GRAF

*We come to meet new sisters,
We come to greet the old,
We come for song and love and work,
For tears and fun all told.
We hail from all four corners
Of our beloved land,
Linking together heart to heart
While joining, hand in hand.
To help all girls of Mu Phi
Grow stronger year by year
In faith and hope and charity,
These things bring us here.*

Without going you can get nowhere.—Chinese Proverb.

A Glowing of God's Morning

by

RUTH SCHEER

*When a glowing of God's morning
Comes in creeping blazingly,
And gleams in golden glory
Through all space exultantly,
To ponder past the darkness,
Chasing night's black mystery—
Out of every corner
With its bright audacity!
My soul awakens to a presence
Full of majesty,
Rejoicing with God's sunbeams
Just to live and love and be!*

WHEN music and courtesy are better understood and appreciated, there will be no war.—CONFUCIUS

THE MAY 1956 TRIANGLE OF MU PHI EPSILON

Registration Blank

Mu Phi Epsilon Atlantic Province Convention

Sheraton Hotel, Rochester, N. Y.

June 19-22, 1956

Applications should be in by May 31, 1956. Please fill out and mail to RUTH WATANABE, Eastman School of Music, Rochester 4, N. Y.

NAME

ADDRESS (after June 1)

CITY

CHAPTER

Signify whether BUSINESS DELEGATE

MUSIC DELEGATE

VISITOR

Day and time of arrival

INDICATE TRANSPORTATION: Train, bus, plane, car

Day and time of departure

Room reservation Preference of room-mate
(There will be some single rooms.)

INITIATED IN CHAPTER DATE

National offices held

Conventions attended

General Information for Visitors

ACCOMMODATIONS: Sheraton Hotel

RATES: Single rooms \$6.85-10.85; double rooms \$9.85-12.85; twin rooms \$11.85-15.85.

NOTE: The Sheraton Hotel has given us a special rate of \$5.25 per girl in twin bedded rooms provided their registration is in by May 31, 1956.

REGISTRATION FEE: \$3.00

MEALS, exclusive of breakfasts: about \$24.00 for entire convention.

ROOMS (single) with lavatory are available at \$2.00 per day exclusive of meals at the Munro Dormitory of the Eastman School of Music. Munro is within walking distance of the Hotel and the Eastman School.

THE MAY 1956 TRIANGLE OF MU PHI EPSILON

Pre-Convention Events

Pre- and Post-Convention events are not included in the delegates' entertainment. Advance reservations must be made for Monday evening's dinner (Monday, June 18) at \$2.00 per person. Please fill out and mail to RUTH WATANABE, *Eastman School of Music, Rochester 4, N. Y.*, by May 19, 1956.

I expect to attend the Monday night Pre-Convention dinner.

NAME

CHAPTER

DELEGATE OR VISITOR

Monday evening, June 18, complimentary

Tour and showing of historic film at Eastman House, photographic museum and Dryden Theatre.

Post-Convention Tours (please check)

NIAGARA FALLS

CORNING GLASS WORKS

EASTMAN KODAK CO.

Arrangements for these tours may be made at the registration desk.

MΦE

DIRECTORY

Founders

DR. WINTHROP S. STERLING, *Died November 16, 1950*
ELIZABETH MATHIAS FUQUA (MRS. JOHN W.), *Died May 17, 1950*

Honorary Advisory Board

- ELIZABETH MATHIAS FUQUA (MRS. JOHN W.), A, (Deceased), 1904-05, 07, 08
MYRTAL PALMER LEACH (MRS. FRANK), I, 2 Messervy St., Salem, Mass., 1905-07
ELFRIDA LANGLOIS KENT (Deceased), A, 1908-11.
ALICE DAVIS BRADFORD PECK (MRS. ARTHUR (Deceased), A, 1911-13.
ORA BETHUNE JOHNSON (MRS. J. F.) (Deceased), O, 1913-15
MARY TOWNSLEY PFAU (MRS. WILLIAM) (Deceased), A, 1915-16
ROXIELETTIE TAYLOR YEATES (MRS. JOHN), O, 1119 Rumsey Ave., Cody, Wyo., 1916-17
HARRIET THOMPSON WRIGHT (MRS. WILLIAM E.), X, 482 Glen Ave., Fresno, Calif., 1917-20
DORIS BENSON (MRS. WALTER), IA, Spikeswood Farm, Woodruff, Wisc., 1920-22
PERSIS HEATON TRIMBLE (MRS. CHARLES M.) (Deceased), MA, 1922-26
LUCILLE EILERS BRETTSCHEIDER (MRS. AUGUST, JR.), A, 3426 Morrison Place, Clifton, Cincinnati, Ohio, 1926-28
ORAH ASHLEY LEMKE (MRS. GEORGE W.), A, 1327 McCutcheon Rd., Richmond Heights 17, Mo., 1928-30
BERTHA M. (KING) VAN TILBURG (MRS. V. B.), ME, 1901 Alessandro Trail, Vista, Calif., 1930-32, 34-40
DOROTHY ELIZABETH PATON, I, Observatory Lodge, Apt. 304, 1402 Washington Heights, Ann Arbor, Mich., 1932-34
ELIZABETH AYRES KIDD (MRS. A. EUGENE, JR.), ME, New Trier High School, Winnetka, Ill., 1940-42
AVA COMIN CASE (MRS. LEE O.), I, School of Music, University of Michigan, Ann Arbor, Mich., 1942-48
MARGARETTE WIBLE WALKER, MN, 2310 Scarff St., Los Angeles 7, Calif., 1948-50
RUTH ROW CLUTCHER (MRS. JOHN), O, 21 Kent Rd., Upper Darby, Penna., 1950-54
ANCELLA M. FOX (MRS. O. S.) (Deceased), IA (Elected Honorary Life Member of Honorary Advisory Board at 1920 National Convention)

National Council 1954-1956

- National President*—ELEANOR HALE WILSON (MRS. P. RAYMOND), T, 2800 39th Ave. West., Seattle 99, Wash.
National First Vice President—ROSALIE V. SPECIALE, ΦM, 560 N. First St., San Jose 12, Calif.
National Second Vice President—NORMA LEE MADSEN, EM, 2809 Connor St., Salt Lake City 6, Utah.
National Third Vice President—PAULINE JAMES BAKER (MRS. PAUL W.), O, 2 Homestead Acres, St. Louis 24, Mo.
National Fourth Vice President—ELIZABETH STORER BOTHWELL (MRS. WILLIAM G.), MII, 316 Beech St., Edgewood, Pittsburgh 18, Penna.
National Editor—RUTH HAVLIK, ΦP, 532 S.E. Fifth St. Apt. A, Minneapolis 14, Minn.
National Executive Secretary-Treasurer—BERNICE S. OESCHLER (MRS. RALPH J.), E, 6604 Maplewood Ave., Sylvania, Ohio.
NATIONAL EXECUTIVE OFFICE—6604 Maplewood Ave., Sylvania, Ohio.

Mu Phi Epsilon National Committees

AMERICAN MUSIC

Chairman—AMY ALDRICH WORTH (Mrs. H. I.), T, 1614 35th Ave., Seattle 22, Wash.

MAGAZINE SUBSCRIPTION AGENCY BOARD

Chairman—HELEN MCKIE RAMAGE (Mrs. JOHN A.), Δ, 15724 Turner Ave., Detroit 38, Mich.

Magazine Agency Treasurer—SUE M. JONES CAMPBELL (Mrs. BRUCE J.), MΞ, 530 Fairfax Ave., San Mateo, Calif.

Atlantic Province—MARGARET H. JOHNSON DANNALS (Mrs. LELAND E.), Ω, 41 Cooke St., Waterbury, Conn.

Great Lakes Province—ANN ARBOR DIVISION: LUCY K. SELDEN MILLER (Mrs. MARTIN A.), ΦK, 12860 W. Ten Mile Rd., South Lyon, Mich.; DETROIT DIVISION: HELEN MCKIE RAMAGE (Mrs. JOHN A.), Δ, 15724 Turner Ave., Detroit 38, Mich.; ILLINOIS DIVISION: MARY G. GOTTMAN STEARNS (Mrs. HARRY C., JR.), 292 Olmsted Rd., Riverside, Ill.; OHIO DIVISION: VERA DRAGISICH ZUGICH (Mrs. ALEXANDER), 15713 Delaware, Lakewood 7, O.

North Central Province: GWENDOLYN KIRK WELLS (Mrs. RALPH B.), Ω, 2508 47th St., Des Moines, Iowa.

East Central Province—INDIANA DIVISION: MARY MOORMAN, K, 47 Bank-

ers Lane, Apt. B, Indianapolis, Ind.; MISSOURI DIVISION: LUCILLE M. COOK GEWINNER (Mrs. JULES), Θ, 500 Crofton Ave., Webster Groves 19, Mo.

South Central Province—COLORADO DIVISION: JANE HINKLE MCCLEGGAGE (Mrs. ZIMRI I.), 3885 Quay, Wheatridge, Colo.; TEXAS DIVISION: VALERIE FOSCUE (Mrs. A. W., JR.), MX, 3300 Milton, Dallas 5, Texas.

Pacific Province—LOS ANGELES DIVISION: EVAMARIA MORITZ LANNING (Mrs. EDGAR), ΦN, 3819 Westwood Blvd., Culver City, Calif.; NORTHERN DIVISION: KATHRYN H. ORME ASEY (Mrs. FRANK), P.O. Box 653, 73 Morningside Dr., Eugene, Ore.; SAN FRANCISCO DIVISION: SUE M. JONES CAMPBELL (Mrs. BRUCE J.), MΞ, 530 Fairfax Ave., San Mateo, Calif.

INTERNATIONAL MUSIC RELATIONS

Chairman—ADELAIDE PORTS SPURGIN (Mrs. MURRAY S.), Ω, 3450 Dudley St., Lincoln, Nebr.

MUSIC IN HOSPITALS AND MUSIC THERAPY

Chairman—VIOLA MOEN ANDERSON (Mrs. HENRY O.), ΦI, 1038 First St., North, Fargo, N. D.

DISTRICT CONFERENCES

Chairman—FRANCES KOMA KELLEY (Mrs. RALPH W.), MΦ, 2798 Hampton Rd., Rocky River 16, Ohio

FINANCE

Chairman—DOROTHY E. PATON, Γ, Apt. 304 Observatory Lodge, 1402 Washington Heights, Ann Arbor, Mich.

MU PHI EPSILON SCHOOL OF MUSIC AT GADS HILL CENTER
1919 West Cullerton, Chicago, Ill.

Director—WINNIFRID R. ERICKSON, MI, 1951 W. Schiller St., Chicago 22, Ill. Representative on Settlement Board—
Treasurer—ALMA E. GRAMBAUER, MΞ, 1380 Henry St., Des Plaines, Ill. MARIE MUELLER WALLERICH (Mrs. GEORGE W.), IA, 511 Forest Ave., Oak Park, Ill.

NEW YORK CITY RADIO

Chairman—ELIZABETH BALL KURZ (Mrs. I. J.), Δ, 140 E. 95th St., New York, N. Y.

RITUAL

Chairman—LORRAINE M. ASENDORF (Mrs. WILLIAM FRED), MA, 1846 N. 38th, Kansas City, Kans.

STERLING-MATHIAS MEMORIAL SCHOLARSHIPS

Chairman—AVA COMIN CASE (Mrs. LEE O.), Γ, School of Music, Ann Arbor, Mich.
1956 NATIONAL CONVENTION

Chairman—RUTH WATANABE, MN, Eastman School of Music, Rochester, N. Y.

National Affiliations

NATIONAL FEDERATION OF MUSIC CLUBS	NATIONAL MUSIC COUNCIL
MUSIC TEACHERS NATIONAL ASSOCIATION	NATIONAL ASSOCIATION FOR MUSIC THERAPY (Sustaining member)
MUSIC EDUCATORS NATIONAL CONFERENCE	NATIONAL GUILD OF COMMUNITY MUSIC SCHOOLS (Auxiliary member)
NATIONAL ASSOCIATION SCHOOLS OF MUSIC	BRILLE INSTITUTE OF AMERICA COUNCIL OF ORGANIZATIONS
PROFESSIONAL PANHELLENIC ASSOCIATION	

Annual Scholarships

EDWARD MACDOWELL ASSOCIATION	NEIGHBORHOOD MUSIC SCHOOL, Los Angeles, Calif.
NATIONAL MUSIC CAMP, Interlochen, Mich.	COMMUNITY MUSIC SCHOOL, INC., St. Louis, Mo.
FRIENDSHIP HOUSE, Washington, D. C.	

Change of Name and Address

Must be sent not later than the first day of month of issue of TRIANGLE to the NATIONAL EXECUTIVE OFFICE, 6604 Maplewood Ave., Sylvania, Ohio.

Post Office will not forward copies unless extra postage is sent. Duplicate copies cannot be issued to those who fail to send notice of their change of name or address.

USE THIS FORM

Chapter of Initiation..... Date of Initiation.....

Name at time of initiation.....

Present Name (Family) (First) (Middle)

Husband's Name, if married..... (Family) (First) (Middle)

Former Address (Number) (Street)

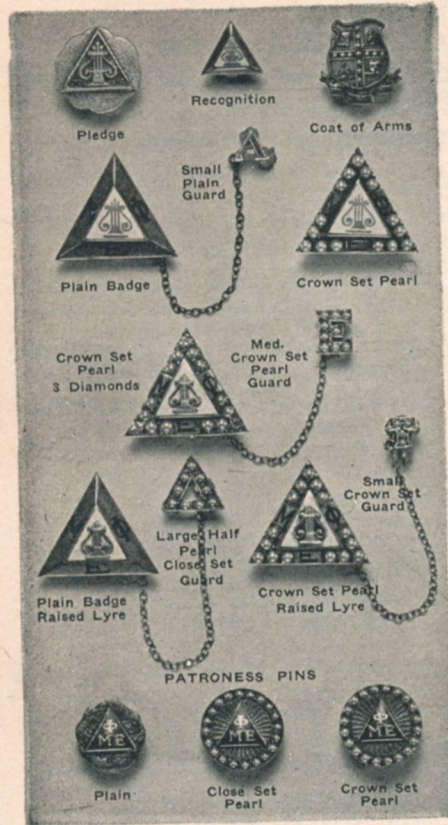
Former Address (City) (State)

New Address (Number) (Street)

New Address..... (City) (State)

WEAR YOUR MU PHI EPSILON BADGE

Wherever You
May Go



Wear your pin with pride. It will identify you wherever you go and may be the means of recognition and new friendships.

Select your pin from the list here or send for your complete illustrated price list.

INSIGNIA PRICE LIST

BADGES:

Plain, raised lyre.....	\$ 6.75
Plain, flat lyre.....	5.50
Close set pearl.....	11.00
Crown set pearl.....	15.75
Crown set pearl, 3 diamonds....	41.00
Crown set pearl, 6 diamonds....	65.00
Crown set all diamond.....	134.00
Crown set with 3 amethysts and 2 pearls in each corner.....	17.25
Crown set with 2 amethysts and 3 pearls in each corner.....	16.75
*Raised Lyre on badges, addi- tional	1.25
Crown set pearl.....	14.25
Close set pearl.....	11.75

GUARD PINS:

	Single Letter	Double Letter
Plain	\$2.75	\$ 4.25
Close set pearl.....	5.50	9.25
Crown set pearl....	7.75	14.00

White gold guards:
\$1.00 additional for plain guards.
2.00 additional for jeweled guards.

White gold badges—\$2.00 additional for plain badges.
\$3.00 additional for jeweled badges

Recognition pin, 10K gold..... 1.75
Pledge pin, sterling silver..... 1.00
Music award charm, sterling..... 2.00
Music award charm, 1/10 10K gold filled 3.00

PATRON OR PATRONESS PINS:
Nugget border 4.50

TAXES: Add 10% Federal Tax and any State Tax to the prices listed.

NOTE: Orders for official insignia must be placed with the Mu Phi Epsilon National Executive Office.

L.G. Balfour COMPANY
ATTLEBORO, MASSACHUSETTS

Official Jeweler to
Mu Phi Epsilon

THE MAY 1956 TRIANGLE OF MU PHI EPSILON

ALUMNAE CHAPTERS

1955-56 Calendar

SEPTEMBER: PRESIDENT: Call meeting of chapter officers to make plans for year.

CORRESPONDING SECRETARY: Report to NEO any changes in names and addresses of chapter officers. Order supplies for year from NEO, enclosing remittance sheet and check made payable to: MU PHI EPSILON.

SEPTEMBER 10: HISTORIAN: All material for the November TRIANGLE, other than newsletter, must be in the office of the National Editor. New address of National Editor: 532 S.E. Fifth St., Apt. A, Minneapolis 14, Minn.

OCTOBER 15: TREASURER and CORRESPONDING SECRETARY: Prepare and send to NEO fall membership list on official forms, with remittance sheet and check made payable to: MU PHI EPSILON, to cover fall per capita tax (\$0.75 per member), convention taxes (\$1.25 per member), and TRIANGLE subscriptions for annual subscribers (\$1.50 per year).

NOVEMBER 10: HISTORIAN: Deadline for material for January TRIANGLE. Send newsletter either November 10th or January 10th.

NOVEMBER 13: FOUNDERS DAY: TREASURER: Send to NEO, with remittance sheet, check made payable to: MU PHI EPSILON, for Founders Day Pennies—your contribution of 52 pennies per member.

DECEMBER 1: PRESIDENT: Write fall report-letter to National Third Vice President, sending copy to your Province Governor.

JANUARY 10: HISTORIAN: Required newsletter due at office of the National Editor (if not sent November 10th). Deadline for all other material for March TRIANGLE.

NOT LATER THAN FEBRUARY 28: PRESIDENT: Hold election of new officers, to be installed at annual business meeting.

MARCH 10: HISTORIAN: Deadline for glossy and biographical sketch of convention delegate to be sent to National Editor, and any other material for May TRIANGLE.

MARCH 15: TREASURER and CORRESPONDING SECRETARY: Prepare and send to NEO spring membership list on official forms, with remittance sheet and check made payable to: MU PHI EPSILON, to cover spring per capita tax (\$0.75 per member), convention taxes (\$1.25 per member), and TRIANGLE subscriptions for annual subscribers (\$1.50 per year) not reported on October 15th list.

APRIL 1: PRESIDENT: Write spring report-letter to National Third Vice President; send copy to Province Governor.

MAY 1: CORRESPONDING SECRETARY: Send names and addresses of new officers to NEO.

JUNE 1: PRESIDENT and TREASURER: Send annual reports to NEO on official forms.

The
Mu Phi Epsilon
Creed



I BELIEVE in *Music*, the noblest of all the arts, a source of much that is good, just, and beautiful; in *Friendship*, marked by love, kindness, and sincerity; and in *Harmony*, the essence of a true and happy life. I believe in the sacred bond of *Sisterhood*, loyal, generous and self-sacrificing, and its strength shall ever guide me in the path that leads upward toward the star.

—RUTH JANE KIRBY, Omega