

V. 53 #4

SPRING  
1959

The



# Triangle

of MU PHI EPSILON



1958-59  
Calendar

# COLLEGIATE CHAPTERS

N.E.O. Address: 1139 N. Ridgewood Dr., Wichita 14, Kans.

National Editor Address: 532 S.E. Fifth Street, Apt. A, Minneapolis 14, Minn.

### FIRST WEEK OF SCHOOL: President:

Call meeting of chapter officers to inspect chapter equipment, give chapter officers materials sent from N.E.O., and make plans for the year. Corresponding Secretary: Return official form *immediately* to N.E.O. giving address changes of chapter officers and other chapter members. Order supplies for the year, Form No. 3. Send name of Chapter Magazine Chairman to Marjorie Bernat, 785 Pierce, Birmingham, Mich.

**NOVEMBER 1:** Deadline for sending in fall stationery orders.

**NOVEMBER 13:** Founders Day. Treasurer send voluntary contribution of 55c per chapter member to N.E.O., enclosing Form No. 3.

**NOVEMBER 15:** Treasurer and Corresponding Secretary. **DEADLINE** date for mailing fall national taxes to N.E.O. Send check and 2 copies of Form No. 2. Send TRIANGLE subscription renewals to N.E.O., using Form No. 1.

**DECEMBER 1:** President: Write fall report letter to your Province Governor concerning chapter activities and problems. Send copy to Nat'l 5th VP. Set date for work party with District Director.

**FEBRUARY 1:** Contestants, Musicological Research Contest. Send notice of your intention to enter contest to Jane McCluggage, 3885 Quay, Wheatridge, Colorado.

**FIRST MONTH OF SECOND SEMESTER OR NO LATER THAN FEBRUARY 28:** Elect new chapter officers. Corresponding Secretary: Send names and addresses of new officers immediately to N.E.O., returning 8

copies of official forms. **NO EXCEPTIONS.** Chapter: Plan Work Party, on date set with District Director.

**MARCH 1:** Treasurer and Corresponding Secretary: **DEADLINE** for paying spring taxes to N.E.O. Send check and two copies of Form No. 2. Send additional renewals of TRIANGLE subscriptions to N.E.O., using Form No. 1.

**MARCH 15:** Manuscripts for Musicological Research Contest due at office of Jane McCluggage.

**APRIL 1:** **DEADLINE** for ordering stationery for spring delivery.

**APRIL 1:** President: Write spring report letter to your province governor, with copy to Nat'l 5th vice president.

**MAY 31:** Before this date send all contributions for national projects to N.E.O.

**JUNE 1:** Manuscripts for Original Composition Contest due at office of: Glorian Butler Thomas, 326 Walhalla Road, Columbus 2, Ohio

**JUNE 1:** President, Corresponding Secretary, Treasurer and Faculty Adviser: **DEADLINE** for returning annual reports to N.E.O. on official forms.

**HISTORIAN:** The following are deadline dates for TRIANGLE materials. Send newsletter and other materials at least once during year to National Editor.

December 1—For Winter issue of THE TRIANGLE.

March 1—For Spring issue of THE TRIANGLE. Deadline for required newsletter.

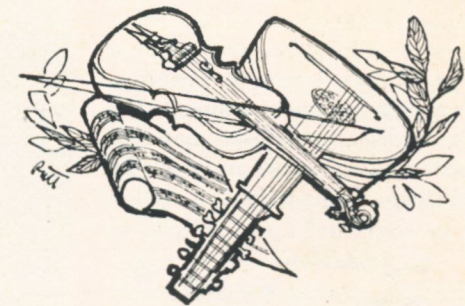
August 1—For Fall issue of THE TRIANGLE.

# The Triangle of Mu Phi Epsilon

SPRING • 1959

# MΦE

	Page
Music Traditions in Sitea, Crete Island .....	2
It Took a Miracle .....	5
Introducing our Musicological Research Judges .....	7
An Indomitable Woman—Agi Jambor .....	9
A Day for the Organists .....	10
More Jewels in Our Crown .....	13
Silence—Space—Privacy, The MacDowell Colony .....	18
Pride of Mu Phi Epsilon .....	20
20th American Music Festival at WNYC .....	25
Spotlight on Frances Robinson .....	26
Mu Phis Husbands and Wives .....	28
In the Picture Parade .....	30
To Dorothy with Love .....	31
Dr. Spaeth is Honored .....	32
MΦE Students in Europe .....	33
MΦE Award Winners .....	35
MΦE Sponsor for NFMC Music Week .....	37
Worthy of Note .....	38
In Memoriam .....	40
Sharps and Flats .....	45



**RUTH HAVLIK, Editor**

THE TRIANGLE of Mu Phi Epsilon is published four times yearly, in Summer, Fall, Winter and Spring, at 2642 University Ave., Saint Paul, Minn., by Leland Publishers, Incorporated (The Fraternity Press), for Mu Phi Epsilon, National Music Sorority. The subscription price is \$1.50 per year. Deadlines for copy: Materials for publication must reach the Editor, 532 S.E. Fifth St., Apt. A, Minneapolis 14, Minn., before the 1st of August, December and March. Entered as second class matter at the postoffice at Saint Paul, Minn., under the act of March 5, 1879.

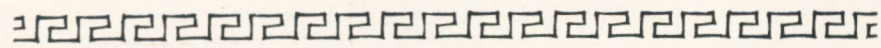
**POSTMASTER:** Send all changes of address to 1139 No. Ridgewood Drive, Wichita 14, Kansas.

VOLUME 53

SINGLE COPIES—35c

NUMBER 4





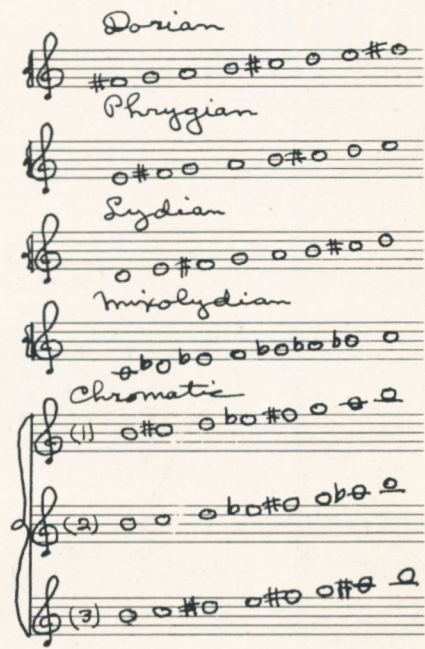
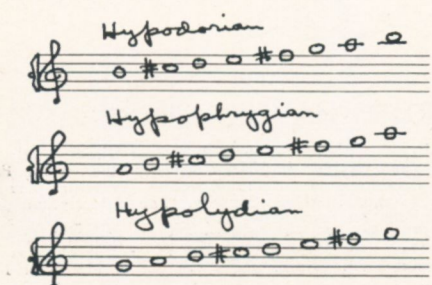
# Music Traditions in Sitea Crete Island Greece

by ELIZABETH AYRES KIDD,

New Trier Township High School,  
Winnetka, Illinois

Central Chicago Alumnae Chapter

△ During our sojourn in the lovely village of Sitea on the northeast coast of Crete my husband and I had the privilege of a visit with Mr. and Mrs. John Delivasilis in their home which affords a beautiful view of the sea and the hillside villages to the north. Mr. Delivasilis is the well-known composer of Sitea whose interest in folk music has led him to employ traditional melodies in some of his orchestral suites. He played the modal scales for us on his mandolin, after which his wife sang a number of folk songs to her husband's mandolin accompaniment. We tape recorded this music material. The scales, in the order in which he played them, are as follows:

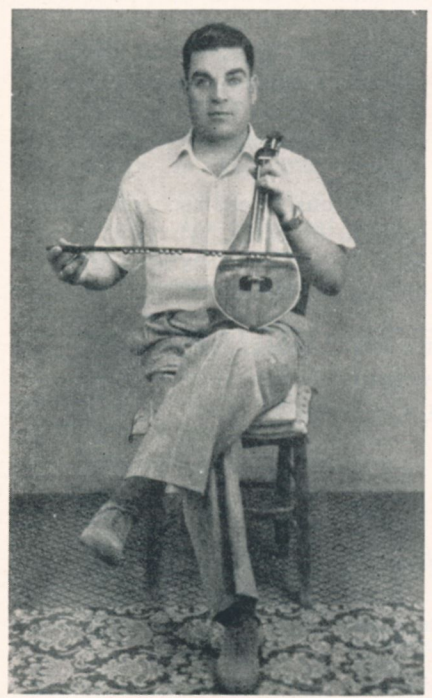


Later in the afternoon the renowned lyra player of Sitea dropped in to participate in the musical performance. He is Mr. John Dermitzakis, famous for his ballad poems (Kritikes Mantinades), the words and music of which he has composed. He sang some verses for us, accompanying himself on the lyra with much instrumental improvisation. The Cretan lyra—described by me in detail in a former TRIANGLE article entitled “Music Excursions in Greece” (January, 1957)—is a small,

rebec-type violin tuned to A, D, G of the western violin and played with a bow on which are hung little brass bells. We also made tape recordings of his musical performance. The poems consist of rhymed couplets of approximately fifteen syllables per line. One group, entitled “Philosophy of Life,” has 40 couplets; another group, entitled “Differences,” has 102 couplets.

On our way back to the hotel we heard music emanating from a small shop nearby. We stopped in to listen. Mr. Dermitzakis, who had returned to his store after leaving the Delivasilis home, was playing dance melodies on his lyra, accompanied by a guitar player and a drummer. The bystanders, who quickly joined in the dance rhythms, showed us the steps of such types as the Cretan circle dance (choros syrtos) and the leap

John Dermitzakis



or war dance (choros pyrrichios or chaniotikos). These dances still show some resemblance to those described in Homer and Lucian.

One of the most famous literary products of Venetian Crete is the romantic epic known as the “Erotokritos.” It is a heroic epic attributed to Vitzentzos Kornaros of Sitea. The Kornaros family of Sitea like that of the Bach family of Thuringia had a distinguished lineage. In fact, five Kornaros families existed from the end of the 15th to the end of the 16th century. The first edition of the epic was printed in Venice in 1713. Professor S. A. Xanthoudides, a Cretan, in his text of 1915 concludes that the poem must have been written between 1550 and 1669, whereas John Mavrogordato's edition of 1929 gives the date as 1645 A.D. However, at the conclusion of the story, the poet identifies himself as Vitzentzos, by family Kornaros, born and brought up in Sitea where he wrote the poem. Of course, this addendum could have been written by the editor of a later edition.

The epic consists of five scenes or acts. It is written in the usual political (common or bourgeois) verse of 15 syllables per line and in rhymed couplets. The language is the Cretan dialect of modern Greek. The story is probably based on several traditional episodes gathered together by the author and molded into an epic drama. The principal characters in the Erotokritos are: Aretousa, daughter of the king (Hera-kles) and queen (Artemis); Rotokritos, son of the favorite councillor of the king; Polydoros, the constant friend of Rotokritos; Phrosyne, nurse to Aretousa; and the mother of Rotokritos (no name given). The narrative resembles that of *Romeo and*



Juliette, Aucassin et Nicolette, and also that of the Inca epic, *Ollantay*.

The story of the epic, in brief, is as follows:

*Rotokritos has fallen in love with Aretousa, but the king objects to this romance because the suitor is not of royal blood. Nevertheless, Rotokritos would take his lute and play and sing very beautifully under the palace windows. But the king wishes his daughter to marry the royal Byzantium suitor. There is a tournament, the winner of which is Rotokritos. Soon thereafter Rotokritos is banished and Aretousa is cast into prison because of her refusal to marry the man of her father's choice. Finally, a war breaks out between Vlahia and Athens. Rotokritos comes forth as a champion of Athens and wins the battle. In gratitude, the king gives his realm to Rotokritos for inheritance. Rotokritos and Aretousa are married and rule wisely for a long time.*

The following music selection (Melodia Erotokritou) is from a collection of Cretan dance tunes (Kritikoi Choro) published at Athens in 1937. The volume is in the public library at Iraklion (Herakleion), capital city of Crete.

An almost identical melody occurs

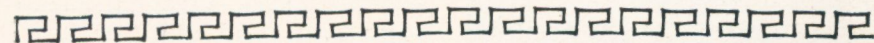
in the Athens 1952 re-issue of S. A. Xanthoudides' edition. We, our-



selves, also obtained a tape recording of some music used in connection with the Erotokritos and played by a small ensemble of musicians.

The political verse is likewise the ballad metre of the Cretan drama of love and death known as the "Erophile," written in the early 17th century by George Chortatzis and first published at Venice in 1637, after the author's death. In this tragedy, short odes, in iambic trimeter cat-alectic, are sung by a chorus of maidens attendant upon the heroine. A short ode to Eros, an ode to the sun, and a chorus of devils are featured.

And thus, at the conclusion of our sojourn in Sitea, we had become fully cognizant of its long tradition of literary and musical achievements!



#### THE TEACHER

*Passing through this world like a  
flame,  
I have warmed,  
I have seared,  
I have illumined.  
Tell me, before I flicker into  
darkness,  
Is there somewhere a torch  
That I have kindled?*

—SIBYL SCHNELLER, *SF Alumnae*

# It Took A Miracle

△ I CAN'T believe it! Four years are almost gone. Yet, not gone . . . for the past is ever present with us, and God has placed in us the wonderful ability to store up memories and somehow as they are sifted in time, we find what we have left is a store-house, a cup "running over" with blessings! And so it is, as I look back on four years of college in America.

Four years ago, sitting behind my secretarial desk in my hometown of Beirut (Lebanon), college was a dream, and the United States a mere fantasy, far removed from the realm of possibility; then Katy, a "Junior Year Abroad" student, came into my life, an unpredictable bundle of something, and my life never was the same after meeting her! Challenged by her enthusiasm and her faith that God is able to "provide my every need" I started corresponding with her college in Emporia, Kansas (where, incidentally, I was initiated into Mu Phi Epsilon) and started witnessing how God can work and overthrow obstacles that seem impossible. I suppose I could write a book about the way I came to America, how difficulties were overcome, how financial needs were met at every turn, and how for four years, I have stood back and watched miracle

after miracle take place in my life because I trusted God to do it.

But even back in Lebanon, music had a strong hold on my heart, and I seldom passed an opportunity to sing in choirs, solos, madrigals, operettas, etc. Naturally, when I came to college, I did not hesitate to declare my major, and I can't say I have ever regretted it. It really thrilled me to discover how much indeed music was a universal language, speaking to the heart and mind of Arab and American alike.

College days for me have been quite unique. Faced with a new culture, different from my own, my first reaction was a condemning one, and so the manners and ways of fellow collegians were sharply criticized. Then came the anti-reaction to condone and tolerate all things. But in neither lies the answer that satisfies. It is rather a matter of evaluating, weighing the issues, learning the facts, placing those facts in the light of what God's standards are—for there only can I understand the truth and bridge the gap between cultures. The most thrilling experience anyone could wish to have, is to spend a couple years living, talking, thinking, with a person or group from another culture. We know so little about one another in this world,





that it seems ironical to me that we are trying to reach the moon, before reaching across an ocean.

Before I came to the United States, my image of your country was all out of focus. Most people in other lands do not know, for they have no way of knowing, what America really is. It is more than just a place of pop-corn, libertine teen-agers, crazy jazz, Hollywood scandals, wealthy Texans, and obnoxious tourists! They seldom get a deeper view of American life, mainly because it is not presented to them—so is it any wonder that their eyes turn elsewhere? I found out that they had cars in Kansas, not Indians on horseback, and my surprise was matched if not surpassed, by my Kansas friends, when they found out my father was working for the Ford agency—not camel caravans. Things as simple as that we did not know about each other. I had little understanding of democracy, labor unions, even American family life—for I had seen this only through the eternal triangle of Hollywood productions! So a happy home with children in America was a new revelation to me, and a very precious and pleasant discovery. The genuine generosity and love of the American people in general has completely overwhelmed me—and of all the things I will ever remember about the United States, this wonderful characteristic stands out above all others: Your compassion, your eagerness to help, your willingness to share what you have with me and others.

I have learned much subject matter in four years; I have run for Student Body Office, have experienced the solitude and quiet (?) of

dormitory living, the “joy” of meeting deadlines, the pressure of studies, the challenge of responsibilities. But through all this, the things I value most as I look back, are the lessons of self-discipline, the ability to know, love and understand another person, the ability to evaluate activity in the light of worthwhile action. These are the things that counted for me.

---

### *About the Author*

WADAD SABA, an initiate of Phi Epsilon Chapter, was born in Jerusalem, Palestine. She left Palestine in 1948 as a consequence of the Arab-Israeli war, and became a Lebanese citizen in 1951. She came to The College of Emporia, Emporia, Kansas, in the fall of 1955 on a one-year scholarship and remained there until the spring of 1957. She then transferred to Whitworth College, Spokane, Washington, and is now a Senior, majoring in Music, minoring in English Literature. Wadad plans to return this summer to Beirut, where she hopes to teach music while working on some graduate course. This year she has been the recipient of a tuition scholarship from Whitworth College, and a \$700 International Peace Scholarship granted by P.E.O. For spending money she has a part-time campus job.

*Wadad is the second in a family of four girls.*

*She is listed in WHO'S WHO IN AMERICAN COLLEGES AND UNIVERSITIES this year.*

---

# Introducing . . .

## Our Musicological Research Contest Judges

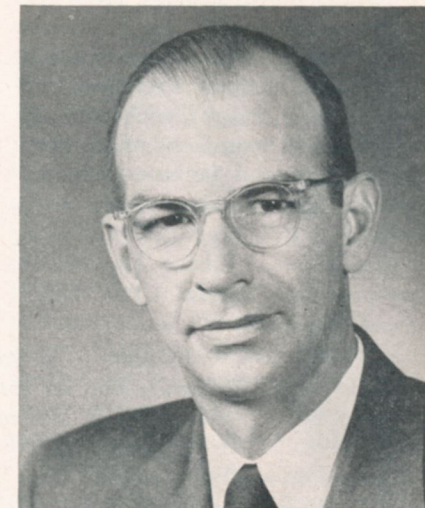
△ DR. PAULINE ALDERMAN, Professor of Music History at the University of Southern California, graduated with a Bachelor of Arts degree from Reed College, after which she secured her Master's degree at the University of Washington. She continued her graduate study at the University of Edinburgh and the University of Strasbourg and received her Ph.D. at the University of Southern California. Dr. Alderman taught at Pomona College and the University of Washington before coming to the University of Southern California.

Besides being a member of Mu Phi Epsilon, Dr. Alderman is a member of the American Musicological Society, the Music Library Association, MENC, Phi Beta Kappa, Pi Kappa Phi, and Pi Kappa Lambda.

Dr. Alderman is the author of *A Study Guide for NVC Radio Music Appreciation Course*, *Pioneers of Music*, *Introduction to Concert Music* and *A Music Appreciation Syllabus*. She has also written operettas, one of which received an award presented by the American Society of Composers and Authors.



*Dr. Pauline Alderman*



*Dr. Robert Warner*



DR. ROBERT WARNER, Associate Professor in Music at the University of Michigan, received his Bachelor's degree from Iowa State Teachers' College at Cedar Falls, Iowa. Continuing in graduate work at Eastman School of Music, he received his Master's degree in music theory. In 1938, he went to Eastern Illinois State College where he taught string instruments and theory and directed the orchestra.

Dr. Warner served three years in an army air force band during World War II. From 1946 to 1949, he worked on his Ph.D. in musicology while in residence at the University of Michigan. Returning to Eastern Illinois State College in 1949, he again taught until returning in 1956 to the University of Michigan in the fields of musicology and theory.

Dr. Warner is active in the MTNA, was First Vice-President for the East Central Division from 1954 to 1956, has twice been chairman of the Musicology Committee and at present is Chairman of the National Committee on Musicology. He is also a member of the American Musicological Society, the American Association of University Professors and the American String Teachers' Association. His main field of research has been on John Jenkins, 17th century English chamber music composer.

MUSIC is so bound up with our nature that we could not do without it even if we wished to.—Boetus (475-524 A.D.)

DR. JAN LARUE, Professor of Music in the graduate school of Arts and Sciences at New York University, graduated *magna cum laude* from Harvard in 1940. In 1942, he received the Master of Fine Arts degree at Princeton and his Ph.D. at Harvard in 1952. Dr. LaRue taught at Wellesley College for several years before coming to New York University in 1957.

In 1954-56, Dr. LaRue did research on the 18th century symphony, working as a Fulbright Research Professor and a Faculty Fellow, and made thematic catalogues of the holdings of more than 80 European libraries. In the summer of 1958, after serving as delegate to the International Musicological Congress in Cologne, he made extensive investigations in Scandinavian libraries. He has developed a sideline of manuscript analysis, particularly paper and watermark identification.

Dr. LaRue has had articles in many publications, including *Musical Quarterly*, *Journal of the American Musicological Society*, *Notes*, *Music and Letters*, *Monthly Musical Record*, *Music Review*, *Fontes Artis Musicae*, *Oesterreichische Musik Zeitschrift* and *American Anthropologists*.



## An Indomitable Woman

AGI JAMBOR

△ AGI JAMBOR, Philadelphia Alumnae, made musical history in Philadelphia this past month when she performed the six piano concertos of Johann Sebastian Bach with a chamber group of members of the Philadelphia Orchestra conducted by Nicholas Harsanyi. These six concerti were scheduled for performance in two programs, the first time in this country that all six have been programmed for consecutive performances. The Musical Fund Society of Philadelphia, the oldest American musical society in continuous existence, presented these concerts in commemoration of the 274th Anniversary of the birth of the composer.

Critics were unanimous and eloquent in their praise, as indicated in these excerpts: "Agi Jambor is a joy to watch and to hear. She is a superb architect and a performer of distinctive and refined artistry. . . . One wishes for space to describe the authority and beauty all on stage lent to their (concerti) performances. It will have to suffice to say that it was

a night when works of one of the greatest composers were performed with exquisite artistry. . . . Mme. Jambor, a dedicated artist, is a small, wiry woman of inexhaustible energy who can summon tremendous power or play with a feathery touch. . . . It was an evening of unalloyed musical pleasure, and if highlights must be chosen, they might be the bustling closing movement of the Concerto in D, which was repeated as an encore; the richly ornamented Siciliano of the Concerto in E, and—well, all of the Concerto in G minor." Critics in Europe have warmly praised Agi Jambor: The Toccata by Bach rose from under her fingers like a Gothic masterpiece of high arch, massive pillar and reverberating space, stretching, bridge-like, between heaven and earth. . . . It was as though Bach himself had returned to hear it."—*Aftontidningen*, Stockholm. "Her merits can best be described by the statement that she towers above most virtuosi of the piano."—*Le Bien Public*, Brussels.

Agi Jambor was born in Budapest, where her mother, a skilled teacher, was the founder of that country's first private school of music. At



seventeen she went to Berlin where Edwin Fischer had invited her for study. She remained there five years concertizing throughout Germany and Switzerland, and exploring the broad field of musicology with Kurt Sachs.

In 1933 she married one of Hungary's outstanding scientists, Dr. Imre Patai, inventor of the colloid coated cathode used in almost all radio tubes. She founded a chamber orchestra in Budapest which she conducted from the piano, and gave countless performances, mostly of Bach. Meanwhile, she had earned her Master's Degree in piano at the Academy and founded and conducted choirs in Holland and Hungary.

The dark days of the war saw the death of her son. In 1947, her hus-

band was invited to America. But weakened by concentration camp ravages, Dr. Patai died two years after reaching this country. His widow went on to make a new life for herself. She did a series of radio broadcasts in Washington with Donald L. Engle as the commentator. She became a teacher at American University and soon fulfilled a series of engagements with Howard Mitchell and the National Symphony. She has given many recitals and has appeared with Eugene Ormandy and the Philadelphia Orchestra. She now holds a full professorship at Bryn Mawr College. While in Washington, she gave benefit concerts for Phi Gamma Chapter. All of us join in a salute to this outstanding artist and sister in Mu Phi Epsilon!

## A Day For The

△ THE St. Louis Alumnae Chapter thinks so much of its organists that a special program is devoted to them each year, when one or more participate. This regularly occurs in January.

The program is usually held at the Third Baptist Church, one of St. Louis' largest churches, located at one of the busiest intersections of the city where, day and night, cars rush by in all directions. Katherine Carmichael is organist and director of the four choirs there, and has received many wonderful gifts from the congregation. On Sundays before each service, she plays the hymn that has become the "theme song" of that church, "Where Cross the Crowded

Ways of Life," and the chimes ring out into the streets, inviting the wayfarer in. The Sunday morning service is broadcast over the radio, and the words of this hymn are sung by the choir as they go on the air. Also, the words of the first verse are engraved on one side of the church building.

Katherine went there as a substitute more than 30 years ago. She was supposed to play only one Sunday. Now, after all these years, she is still frequently and lovingly called their "substitute organist." The story is told that when Dr. C. Oscar Johnson, who came there as pastor more than 27 years ago, heard they had a woman organist, he said, "Well, I'll

soon get rid of her!" But at the dinner celebrating her 30th anniversary with them, when he himself was about to retire, he jokingly told the audience, "I couldn't get rid of her, so now I'm leaving, myself."

Another of our well-beloved organists is Doyne Neal, who directs three choirs at Central Presbyterian Church. She has been there for more than 35 years, and this past summer the congregation gave her and her husband a trip to Europe where they visited eleven countries. Doyne has also been on the faculty of Fontbonne College for 17 years, and she is on the National Board of Examiners for the American Guild of Organists. Some of her former choir members have become famous, such as Jean Madeira and Virginia

## Organists

Haskins, both Mu Phis, and James Wainner, now a New York opera tenor who sang on the Firestone Hour last year and is a member of the Marble Collegiate Choir in New York.

One who might be called the dean of our organists is Marie Burke, who has played at St. Cronin's Catholic Church for 40 years. During this time she has noticed the growth of the liturgical movement in all Catholic churches, and that there is more lay participation than formerly. One of the most beautiful and impressive services at Marie's church is the two-hour vigil service on Holy Saturday Eve. Marie belongs to the Catholic Organists'

Guild as well as the American Guild of Organists. Among her choir members are several of the sons and daughters of the ones with whom she started long ago. Marie's choir seems to be a fertile field for the god of love, for the young men who join frequently become interested in the girls with whom they sing, and when a couple marries and moves to another parish, she loses two singers instead of just one. It happened so often a few years ago that Marie became worried about what would become of her choir.

Among our members who have organs in their homes is Adele Fredrich, a charter member of Theta. Until a hip injury a year or so ago, she was organist at the Ladue Lutheran Church for a number of years. In a tribute to her which was printed by the church, were these words: "An organist is the VIP to the worship services. It is the organist who must lead the congregation in the order of service and be ever on the alert to keep things running smoothly. Hours of practice are necessary, and how many times in passing the church, only the organist's car alone is on the parking lot."

Helen Babcock also has an organ in her home, and when we hold our Christmas meetings there the organ and piano can be combined in lovely Christmas music. Another member, Lola de Valpine, was organist at a number of churches for several years but now she has a studio, with seven teachers under her, which takes all of her time. Musical examinations lasting all day are given annually to more than 200 students. Still another organist who does not have a church position, but plays as a substitute at weddings and funerals, is Cleo Milligan. In 1939, when a new



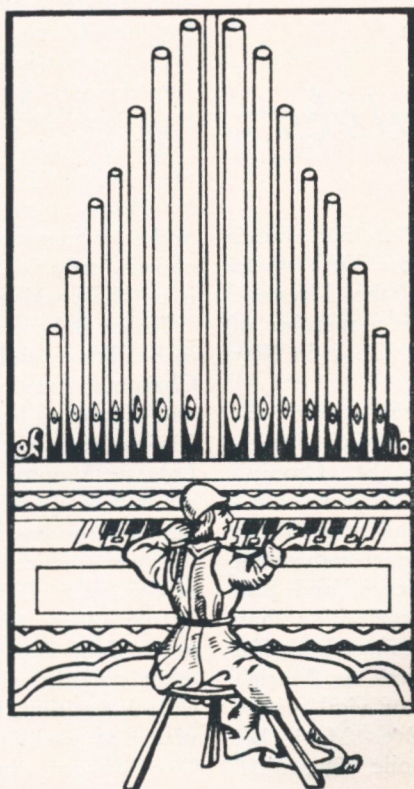
hymnal, called Christian Worship, was published, one of the hymns chosen was "For All the Nations, Lord" the music of which was written by Cleo.

Edith Parker has played at various churches since grammar school days and is now organist at Kirkwood Methodist Church, where she directs four choirs. Edith says church music is getting better through the years as organists and ministers cooperate in trying to raise the standard of their church music. Much depends upon an organist to make the service uplifting, and Edith tries to establish the mood in the first hymn.

But many things can happen during a service that can be frustrating or embarrassing, such as when the

music falls to the floor or the organist turns to the wrong page. One of Edith's most frightening moments came when the alto absent-mindedly took over the soprano solo in an anthem, leaving the soprano with her mouth open. Edith and the rest of the choir wondered if the alto would be able to hit the high note. She did. Edith believes that the final hymn and the postlude are most important, "because," she says, "I like to give the congregation an uplifted feeling as they leave the church."

And, so each year, the St. Louis Alumnae Chapter pays tribute to its organists, and to say that we love them is putting it mildly. May each one of them reach and pass the golden anniversary of her career.—  
RUTH ROGERS JOHNSON, *Historian*.



THE SPRING 1959 TRIANGLE OF MU PHI EPSILON

# More Jewels / in Our Crown

## Alpha Epsilon

### *College of the Holy Names*



president; Eleanor Heide, recording secretary; Marian Rago, corresponding secretary; Sonia Ulrich, treasurer; Annie Chang, historian; Luz Guerra, warden; Betty Jean Bloom, chaplain; Therese Miller, chorister; Colleen Loughman, Alumnae secretary; Anne Wuelfing, parliamentarian.

Faculty members are: Sister Josepha Mary, Music Department chairman, Sister M. Theresa Agnes, MΦE faculty adviser, Sister M. Paul Bernard, Sister M. Angela Louise, and Yaada Weber.

Other members are: Marie Papendick, Lo-Etta Fredinburg, Marjorie Perrelli, Edith Vitale, Mary Ellen Alsing, Leona Snow Derheim, Arlene Senger and Leonora Gillard.

△ ALPHA EPSILON was installed at College of the Holy Names, Oakland, Calif., on Sunday, March 1, 1959, in Durocher Hall. Rosalie Speciale, national president of Mu Phi Epsilon, conducted the ceremony, assisted by Virginia Beardsley, District Director; Muriel Tuttle, president of San Francisco Alumnae Chapter, and members of Alpha Delta Chapter at Sacramento State College. Patrons and patronesses were installed immediately after.

After the ceremony a dinner was served in the students' dining room. A concert given by members of the newly established Alpha Epsilon chapter concluded the evening.

The officers are: Helen Kramm, president; Geraldine O'Malley, vice-

## Alpha Zeta

### *Radford College*

△ ALPHA ZETA CHAPTER at Radford College, Radford, Virginia, had the honor of having Rosalie Speciale, National President, as presiding officer and Rosamond Davis, National First Vice President, as her assistant at their initiation and installation activities March 5 and 6. These and the preceding ceremonies took

THE SPRING 1959 TRIANGLE OF MU PHI EPSILON



place in Lucas Hall of the college. Other members of neighboring alumnae chapters assisting in the pledging and initiation services, included Jane Lancefield, Falls Church, Va., Beth Thewlis, Silver Springs, Md., Bernice Eubank, Lynch Station, Va., and Eleanor Tiplady, Roanoke, Va.

A luncheon in honor of visiting guests and the music faculty of the college was held in the "Colonial Room" of the Governor Tyler Hotel. The new chapter presented its first musical program March 6 for the music faculty, patrons and patronesses, and the visiting guests. Sorority activities concluded with a reception in the Chateau of Bolling Hall.

Officers of the new chapter are:

Ann Cecil Smith, president; Julia Johnson, vice president; Rose Marie Houck, recording secretary; Louise Rexrode, treasurer; Joie Lee Young, historian; Elizabeth Highnote, warder; Ann H. Clark, chaplain; Jenneth Banner, chorister; Betty Lou Russell, Alumnae secretary; and Jean Bird Einstein and Mildred Heimlich, faculty advisers. Other charter members include Winifred Carper, Joan Fanning, Roberta Gibson, Judy Lynn Wampler, and Velva Worsham.

Alpha Zeta Chapter extends heart-felt appreciation and gratitude to all who worked so diligently to make our ceremonies such an inspiring experience.—JOIE LEE YOUNG, *Historian.*



Members of Alpha Zeta Chapter as they concluded pledge ceremonies of the new chapter in Lucas Hall. Front row, left to right: Ann Clark, Louise Rexrode, Julia Johnston, Ann Cecil Smith, Elizabeth Highnote, Joie Lee Young. Second row, left to right: Jean Bird Einstein (faculty adviser), Joan Fanning, Winifred Carper, Judy Wampler, Jenneth Banner, (seated), Rose Marie Houck, (seated), Rosalie Speciale, Nat'l President, Rosamond Davis, Nat'l First Vice President, Roberta Gibson, Alicia Apperson, Mildred Heimlich, (faculty adviser) and Velva Worsham.



Alpha Eta Chapter members are shown with Vera Neely Ross, Rosalie Speciale, Rosamond Davis, and Evelyn Swarouth Hayes.

A MUSIC PROGRAM BY MEMBERS  
OF  
ALPHA ZETA CHAPTER

Organ

Prelude and Fugue.....Bach  
Judy Lynn Wampler

Voice

Tell Me Fair Ladies.....Mozart  
Into the Night.....Edwards  
Roberta Gibson

Mr. Nicolo LoMascolo—Accompanist

Violin

Idyl .....MacDowell  
Minuet from The Military  
Symphony .....Haydn  
Rosemarie Houck  
Betty Dollman—Accompanist

Piano

Allegro from Sonata in G.....Beethoven  
Players .....Granados  
Ann H. Clark

Vocal Trio

Flower of Dreams.....Clokey  
Roberta Gibson  
Winifred Carper  
Phyllis Maggard  
Judy Lynn Wampler—Accompanist

Alpha Eta  
*American University*

△ ALPHA ETA Chapter of Mu Phi Epsilon at American University, Washington, D. C., was installed on March 14, 1959, by Rosalie Speciale, National President, assisted by Rosamond Davis, National First Vice President; Vera Neely Ross and Evelyn Swarouth Hayes, faculty advisers; and members of Phi Psi and Phi Gamma Chapters. A buffet supper given by Ruth Morgan, former PPA local president, honored Rosalie Speciale before the installation ceremonies.

For the pledge ceremony and musical program, hostesses were Kate Fisher and Rosamond Davis respectively. Assisting with ceremony were members of the Washington Alumnae Chapter, led by Edith Athey.

Initiation luncheon and Installation ceremonies were held at the



Walter Reed Officers' Club Saturday, March 14, with 72 members of Mu Phi Epsilon present. Two vocal duets were presented by members of the new chapter. Following the luncheon, Beth Thewlis, Washington Alumnae Chapter president, introduced the Faculty Advisers, Vera Neely Ross and Evelyn Swarhout Hayes; District Director, Eloise Hill; Officers Nadine Smith and Joyce Ann Moore and Carolyn Owens; Shirley Schleter and Carol Wagner, of the Washington Alumnae Chapter; Hostess Sarah Hill Heaton; and special guests, Rosalie Speciale and Rosamond Davis.

Those initiated were: Nadine Smith, President; Marion Dieste, Vice President; Rosalie Gutride, Recording Secretary; Patricia Ann Walker, Corresponding Secretary; Harriet Hunter, Historian; Maxine Boulter, Treasurer; Sylvia Faye Shaw, Warden Chaplain; Nancy Dryden, Chorister; Janet Babigan, (Faculty Member); Peggy Burgess, Carolyn Owens, Jo Ann Romano, Ruth Ann Seabright, Alumnae Secretary; Helen F. Shehan, Chaplain; Sally Ann Stretton; Jane Wiest.

### Gainesville Alumnae

#### *Gainesville, Georgia*

△ GAINESVILLE Alumnae Chapter of Mu Phi Epsilon was installed on Founders Day, by Pauline Baker, past National Third Vice President.

Twenty-five Alumnae from the City and vicinity, with several mem-

bers from Mu Chapter, Brenau College, attended the banquet at the Dixie Hunt Hotel with Pauline Baker honor guest and speaker.

Following the banquet the group gathered at the home of Marguerite Ringo to enjoy a beautiful program of piano numbers played by Eliza Holmes Feldmann.

During the Installation Pauline was assisted by Martha Winn, President of Mu Chapter, Polly Hodges, Joan Harrill and Marie O'Kelley, all of Brenau College.

The Officers installed were: President—Marguerite Ringo; Vice President—Martha Stratton; Secretary—Anne Jackson; Treasurer—Ann Fuller; Publicity—Eliza Feldmann.

Members were: Annadel Moore, Jane Rudolph, Emily Dunlap, Barbara Webster, Grace Cushman, Doris Dodd, Virginia Stallworth, Margaret Carroll, Sara Houser, Ernestine Hosch, Janice Martin, Joye Adams, Frances Shaw, Frances Nalley, Elizabeth Hutchins, Marilyn Brown, and Patricia McKinnon.

After a short business meeting a social hour was enjoyed with Mrs. Van Giesen presiding. — MARGUERITE RINGO.

ARCHITECTURE is frozen music.—  
*Goethe*

MUSIC is imagination which has  
taken definite form.

EMOTION is fuel for accomplish-  
ment, but must have the direction  
of the mind for best results.

*Announcing*  
THE MU PHI EPSILON  
*Scholarship*  
AT THE  
ASPEN MUSIC FESTIVAL  
ASPEN, COLORADO

*for:* 1959 Season (June-July-August)

*to include:* \$180 partial tuition scholarship

*open to:* any initiated member of Mu Phi Epsilon

*For Information and Application, write to:*

NORMAN SINGER, *Dean*

MUSIC ASSOCIATES OF ASPEN, INC.

*161 West 86th Street*

*New York 24, N. Y.*





*Silence . . .*

*Space . . .*

*Privacy . . .*

△ SILENCE and Space—Privacy—  
an infinite spectrum of color  
provided by the colorful landscape  
surrounding the MacDowell Colony  
at all seasons of the year—these  
necessary qualities towards creative-  
ness fulfill Edward MacDowell's  
desire that other workers in the arts  
might enjoy the isolation and free-  
dom from interruption that he found  
in the cabin built for him by his  
wife on their Peterborough, N. H.,  
farm. After his death, Mrs. Mac-  
Dowell traveled throughout the  
country giving piano recitals of his  
works in order to raise money and  
win support for the idea of an ar-  
tist's colony. Founded in 1907, the  
watchword of the colony remains  
today as it was in Mrs. MacDowell's  
time: *the veneration of the artist  
and the fulfillment of his need.*

Many men and women, noted in  
the fields of literature and the arts,  
have been colonists. Among more  
recent colonists is Halim El-Dabh,  
the most celebrated of Egypt's mod-  
ern composers. Of his experience at  
the Colony, Mr. El-Dabh expressed  
himself in this manner: "It was  
here I really learned to think . . .  
Here, I mastered my thoughts." The  
serenity expressed by him seem in  
sharp contrast to the fiery music  
which the world is beginning to  
know; yet, in this silence and space,  
he learned to capture on paper the  
surging tide of strange, modern-  
ancient sounds that welled up in his  
consciousness during the days at this  
mountain idyll. "The technique of  
selective thinking and mental dis-  
cipline that I learned at the colony  
made the creation of 'Clytemnestra'  
possible," said this composer of the  
work which was given thunderous  
acclaim in its world premiere in New

*The*

*MacDowell*

*Colony*

York by the Martha Graham dance  
group last year.

So complete is the privacy at the  
Colony that nobody bothers the ar-  
tists when they are at work. Their  
lunch is left in a basket at the door  
of their individual studios. There  
are 26 studios in all and no two  
studios are visible to one another.  
Even a former colonist like Mr. El-  
Dabh is unable to break through the  
"privacy barrier." With the tele-  
phone on the desk of the director,  
Mr. George M. Kendall, being the  
only telephone in the entire colony,  
a series of notes slipped surreptiti-  
ously under studio doors was the  
system used to contact some of the  
colonists in order that Mr. El-Dabh  
visit with kindred spirits. Among  
those were composer Nikolai Lapat-  
nikoff (one of the judges for the  
MΦE Composition of 1957) whose  
works have been celebrated on both  
sides of the Atlantic. From another

studio came Mrs. Lopatnikoff,  
known professionally as Sara Hen-  
derson, a poetess of national stature.  
An outstanding biographer, Eliza-  
beth Shepley Sargent, talked over  
highlights of her many years at the  
colony. At present she is busily at  
work on a biography of Robert  
Frost. Artist, Gregorio Prestopino,  
another colonist, has risen to the top  
level of his profession. This past  
year alone he had won many awards,  
including a prize for a series of  
paintings in *Life magazine* and a  
Venice film festival award for an  
art movie known as "Harlem Wed-  
nesday."

Thus, the dream of an indomita-  
ble woman continues to provide the  
atmosphere so necessary to creative  
achievement. No private fortune  
launched it, no benefactor of great  
wealth sustains it today. From its  
beginning, it has depended on the  
wide recognition of many for its  
subscriptions.

*Great Thoughts*

*That man is a success who has  
lived well, laughed often, and loved  
much; who has gained the respect  
of intelligent men and the love of  
children; who has filled his niche  
and accomplished his task; who  
leaves the world better than he  
found it, whether by an improved  
poppy, a perfect poem, or a rescued  
soul; who never lacked apprecia-  
tion of earth's beauty or failed to  
express it; who looked for the best  
in others and gave the best he had.*  
—Robert Louis Stevenson.

Where you are is of no moment,  
but only what you are doing there.  
—Petrarch.



# Pride of Mu Phi Epsilon

## JOYCE MALICKY

△ JOYCE MALICKY, an active member of Xi Chapter at Kansas University had a leading role in one of the finest productions Kansas University has ever given. She played "Anna" in *The King and I* for five sell-out nights. When the curtain went down after the first night the box office man announced that every ticket was sold for the four following nights in the big, new auditorium which seats around 1200 people.

Joyce received "rave reviews" for her performance from over seven reviewers of the Lawrence and Topeka area. Some of the comments were: "she was the indubitable star of the show and exuded that special stellar aura which almost eclipsed every one else on the stage," from the *Lawrence Journal World*: "Joyce Malicky, a Baldwin sophomore, was the brightest spot in the entire production,

singing and playing Anna Leonowens, the English schoolteacher in the Siamese palace, to near perfection," from a different reviewer in the *Lawrence Daily Journal World*. To top all this the K.U. Alumni Magazine came out with a two page spread on the show. In the article it said, "One enthusiastic spectator praised the performance highly and told a friend, 'And the only professional is the girl who plays Anna!' The lady was wrong. Joyce Malicky, a sophomore from Baldwin, was cast as Anna."

K.U. is still talking about the show, and Joyce Malicky's performance is still being praised by friends and strangers. Two other Xi girls were in the production as Siamese wives. The two were Marva Lou Powell, Xi's president and Zoe Ann Kelley, Xi's warden.

Joyce is a second year voice and theatre major in the School of Fine Arts. She has had one summer's professional work in the Dallas State Fair Musicals singing chorus. Last year she played the role of "Assunta" in *The Saint of Bleecker Street* and had the leading role of "Ann" in *Man and Superman*. She definitely wants to try her turn at professional show business. She sings because she likes to sing, acts because she likes to act and as she says, "My only hope is to make people happy in my work."—MARIANNE MARSHALL, Xi Chapter President.



Nasrin Farrokh

## NASRIN FARROKH

△ IRANIAN NASRIN FARROKH, after seven years in California, will soon be leaving for Rome and the Santa Cecilia Academia to continue her vocal study.

Most of her residence having been spent at the University of Southern California, she attended Anna Head School, Berkeley, and the San Francisco Conservatory of Music while finishing her high school and college education.

Since moving to Los Angeles and U.S.C., Nasrin has been active in the Intercultural Club, which she helped organize, and many Mu Phi Epsilon and Amazon projects while earning her Bachelor of Arts and Bachelor of Music degrees. She gained professional experience by appearing in plays at the Stop Gap theatre as an actress and with the Los Angeles Philharmonic at the Wilshire Elbell Theater, Hollywood Bowl and on television as a singer and dancer.

The most recent of Nasrin's engagements included an appearance on Jack Douglas' "Seven League Boots", a starring tour of five states for the American Friends of the

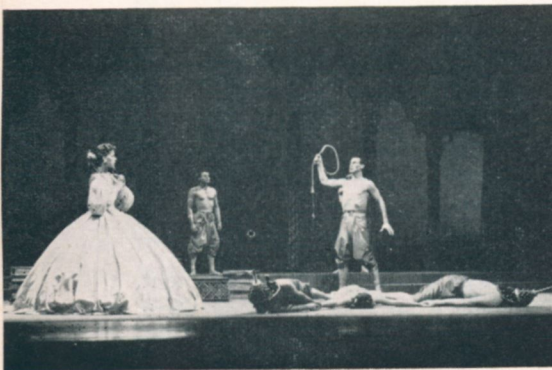
Middle East, presenting her country's music and dance to the American public, and an invitation to perform before the Shah of Iran in Minneapolis, for the Iranian Students' convention.

Nasrin also has written and performed numerous tableaux taken from Persian poetry and presented them both in San Francisco at the International Institute and on the U.S.C. campus. At present, Nasrin is studying at Juilliard School of Music in New York City before leaving for Rome.

Nasrin's goal upon completing her education in Rome is to spread knowledge of the development of Iranian drama and music to the western world through Persian literature.

## RUTH STEPHENSON

△ RUTH STEPHENSON is a soprano soloist of which Lincoln Alumnae Chapter is so proud. Ruth was initiated into Gamma chapter at the University of Michigan. She is a graduate of Colorado Women's College and did graduate work at Michigan University where she earned her Master of Music Degree. While at the U of Michigan she did a great deal of outstanding opera work. Ruth is a former member of the faculty and voice teacher at Lawrence College in Appleton, Wisconsin.







Ruth Stephenson

sin. She had many solo appearances in both Appleton and Oshkosh, Wisconsin, appearing with the Men's Choral group. Lincoln Alumnae chapter has been very fortunate to have several programs by Ruth including a scholarship concert.

On February 17, Ruth appeared As "Cio Cio San" in *Madam Butterfly* with the Omaha Civic Opera Society, Inc. The opera was given at Joselyn Memorial in Omaha and accompanied by the Omaha Symphony Orchestra.

At present Ruth's busy schedule includes private teaching, gardening and cooking, acting as soloist at First Presbyterian Church and most important, her two-year-old daughter Susie, a Mu Phi legacy.

### RUTH LYON MULLER

△ It is with great pride that the Evanston-North Shore Chapter of Mu Phi Epsilon shares with you our beloved and talented Ruth Lyon



Ruth Lyon Muller

Muller. A native Texan and daughter of a piano teacher, Ruth was soloist in concert and radio in her teens. Her B.A. degree from Texas Christian University was financed by a daily program for three years on the local NBC outlet station. Ruth then attended the Eastman School of Music on a Fellowship where she received her Master of Music degree and where she was initiated into Mu Phi Epsilon. She received a scholarship to the David Mannes College of Music in New York City where she studied with William Kroll. In New York City she appeared in over fifty regularly scheduled television network programs. In 1955 the Muller family and her mother moved to Wilmette, Illinois, a North Shore suburb of Chicago. Ruth was soon recognized as one of the leading violinists in the area. She served as President of the Evanston-North Shore Alumnae Chapter for two years. Under her very capable and imaginative leadership the Chapter has enjoyed outstanding

achievement and recognition. We were proud to have her represent us at the convention in Detroit. We wish you might all know her as we do—the beautiful artist, the devoted wife and mother of three small children, the loyal friend, the true Mu Phi.—MARGARET McARTHUR, *Historian*.

### VIRGINIA DUXBURY

△ LINCOLN ALUMNAE CHAPTER is proud of Virginia Rolles Duxbury. A Mu Gamma Chapter initiate, she is a graduate of Stephens College and received her Bachelor of Music degree from University of Nebraska. Virginia's professional experience has been varied and exciting. She has sung with the Burrell Symphony and New Orleans Summer Pops Symphony. She played the leading role in *Barber of Seville* at Columbia, Mo., with male leads from the Metropolitan Opera and City Center. Radio and TV appear-

Virginia Duxberry



THE SPRING 1959 TRIANGLE OF MU PHI EPSILON

ances in Kansas City, St. Louis, Lincoln, Mobile, Alabama, and New Orleans have been numerous. One of the highlights of her TV experience in Lincoln has been her own program "The Music Room." Virginia has appeared as soloist at St. Matthews Episcopal Church in *Elijah*, which was presented on CBS network, she has had leading roles in four Pinewood Bowl Operettas in Lincoln, was guest soloist with U of Nebraska's presentation of Haydn's *Mass in D Minor* and she appeared on Arthur Godfrey's "Talent Scout" program. She represented Lincoln Alumnae Chapter in February when Mu Phi Epsilon, Delta Omicron and Sigma Alpha Iota Alumnae Chapters presented a joint concert.

### ROSALIND REES

△ ROSALIND REES, a former Vice-President of Phi Omicron Chapter at The Cleveland Institute of

Rosalind Rees





Music and a graduating senior, has achieved an outstanding place in music during her four years at the Conservatory. Her scholastic rating is very high which is evident by the list of scholarships she has won. She has held The Lecture Recital Club Scholarship, a special Fortnightly Musical Club Scholarship, a scholarship from The Ranney Foundation and aid from The Cleveland Institute of Music Scholarship Fund. The latter two were given to her for three successive years. At the Institute, she has performed solo works in the 1958 and 1959 Collegium Musicum programs, sung with the Institute Symphony Orchestra, and has had leading roles with the Institute Opera Workshop during the past two summers. She has also given recitals for The Cleveland Friends of Music, and the Manuscript Section of The Fortnightly Musical Club, where she performed works by outstanding Cleveland composers, among whom were Bain Murray and Herbert Elwell, two of Cleveland's music critics. Last June she was Phi Omicron's music delegate at the National Convention held in Detroit. One of her public performances this year was her appearance as soloist with the Greenville Symphony Orchestra, Greenville, Pa. In spite of her busy schedule, she is the regular soprano soloist at the East Cleveland Baptist Church.

### DELORES McCANN

△ DELORES McCANN will receive a Bachelor of Music degree in voice from The Cleveland Institute of Music this June. She already holds

a Bachelor of Science Degree from Virginia State College. Delores is a member of Phi Omicron Chapter of Mu Phi Epsilon. During the two years she has been in Cleveland her public appearances include: the contralto solo role in The Cleveland Institute of Music's production of *King David* by Honegger, the contralto solos in the *Messiah* performed with the Erie Philharmonic Orchestra, Erie, Pa., and has made numerous local television appearances. She has given several benefit recitals and sings with the Antioch Baptist Church Choir. Delores is also the proud winner of many scholarships. Among them is The Beryl Rubinstein Scholarship for 1957, the Philharmonic Glee Club Scholarship, a Fortnightly Musical Scholarship, a scholarship from The Ranney Foundation and aid from the Cleveland Institute of Music Scholarship Fund. Phi Omicron is proud of Delores for contributing so much to the musical life of Cleveland.

Delores McCann




---

# 20<sup>th</sup> American Music Festival at WNYC

New York Alumnae made a notable contribution to an important anniversary: WNYC's Twentieth American Music Festival. The program was enthusiastically received and the appearance of composers Paul Creston, Mu Phi Epsilon's own Ruth Bradley, and poet Norma Sparlin, added luster to this event. Presented on February 14, the program was as follows:

*Prologue* (text by Eugene Hochman) by Elizabeth Gould\*

Ruth Northrup Tibbs, piano; Luanne Gewinner, violin; Darlene Dugan, flute, Eugene Dupin, narrator.

*Second Sonata*—Ned Rorem, played by Dorothy Domonkos, pianist.

Memory, Hither Come (text by William Blake)—Sergius Kagen

Lacquer Prints (text by Amy Lowell)—Dorothy James\*  
If You Had Only Come (text by Alastair Reid)—Frederic Hart

Away from Me (text by Alastair Reid)—Frederic Hart  
sung by Jan DeGaetani, soprano, Lynn Clarke, pianist.

*Suite for Violin and Piano, Op. 18*—Paul Creston  
Mary Gale Hafford, violinist; Juliette Arnold, pianist.

*Prince Toto II* (text by Norma Sparlin)—Ruth Bradley\*

sung by members of the Choir of Park Avenue Christian Church, Ted Turner, baritone with the composer at the piano in this first performance.

\*Members of Mu Phi Epsilon.



# Spotlight on

## Frances Robinson

△ FRANCES ROBINSON, Conductor of the forthcoming Mu Phi Epsilon European Tour, has in the past vividly described highlights from the many tours which she has conducted in Europe, the Orient and South America. We now turn the tables, so to speak, and mention notable highlights about Frances' career.

★ In 1949, Frances Robinson, violinist, became Frances Robinson, principal violist. She was a gracious pinch-hitter when the San Jose Civic Symphony needed a "first chair" viola. During that season she appeared with the orchestra as soloist, playing the cello *Concerto in A minor* by Saint-Saens as transcribed for viola by Rene Pollain.

★ Also in 1949, Frances toured Europe on her own, attending music festivals there. Her greatest thrill was that of hearing Furtwaengler conduct the Vienna Philharmonic in Beethoven's opera *Fidelio*, with Kirsten Flagstad in the featured role.

★ The summer of 1950 found her in Europe again. Seeing the opera in Paris and an audience with the Pope in Rome are the things she remembers most.

★ Her third tour of Europe in 1952 found Frances assisting two Temple University faculty members who were conducting the annual Temple University music study tour. The itinerary included Rome, England, Spain, Scandinavia, Paris and the famous music festivals at Salzburg, Lucerne and Edinburgh.

★ Frances Robinson again assisted in conducting the annual Temple U music study tour in the summer of 1953. This fourth tour included Spain and Austria in addition to countries visited previously. An inveterate traveler, Frances spent her Christmas vacation in Mexico that year!

★ Fall of 1955: San Jose State College campus was "invaded" by Frances Robinson's sky-blue Messerschmitt. Acquired after seeing these brightly-colored cabin scooters whizzing along on highways in Germany, Frances drove it to and from classes. Hitting a top speed of 50 M.P.H., its mileage rate was approximately 100 miles to a gallon of gasoline.

★ Frances Robinson conducted her first tour of the Orient in 1957. Tokyo, Hong Kong, Bang-

kok, Singapore, Manila and Honolulu were among the "ports of call" in this unusual tour.

★ The final concert of the 1957-58 season of San Jose State College Symphony featured Frances as viola soloist in Berlioz's *Harold in Italy*.

★ Summer, 1958: Frances Robinson conducted a 30-day tour of South America. Included in the tour were the ruins of Machu-Picchu in the Andes, Peru, Chile, Buenos Aires, Uruguay, the great industrial city of Sao Paulo, Venezuela, Puerto Rico and the Virgin Islands.

★ September, 1958, found Frances "pinch-hitting" again. This time she reviewed the West Coast debut of Mu Phi Epsilon's Irene Dalis, in San Francisco. The occasion marked the first San Francisco Opera Company's performance of Verdi's *Don Carlo* and was for Irene Dalis a sensational and brilliant debut.

Within a few short weeks, Frances Robinson will again be strolling the Champs Elysees in Paris in company with fortunate Mu Phis and their friends. To all of them we say—"bon voyage!"

Last Call! For reservations write Katherine White, Vagabond Cruises and Travel Service, 1331 3rd Avenue, Seattle 1, Washington.



FRANCES ROBINSON

*Frances Robinson is a graduate of the University of Kansas with Bachelor and Master of Music degrees in violin. She studied in New York at the Julliard School of Music with Sacha Jacobsen and was also privileged to study with the great Leopold Auer, who developed a whole generation of concert violinists. Additional training includes chamber music with Samuel Gardner. She has studied viola with Ferenc Molnar, principal violinist of the San Francisco Symphony, and with Philip Burton, violist of the Griller Quartet. Frances has taught at the State Normal College of University of Montana where she organized a Little Symphony Orchestra and conducted a chorus of nearly 100 voices for several years. She teaches violin, and viola at San Jose State College. During the war she conducted the college symphony on several occasions when her students soloed with the orchestra.*



# Mu Phi / Husbands & Wives

## LILLIAN & SAUL GOODMAN

△ "HALF of the musical Goodman family gave a program last night in Carnegie Recital Hall. She was Lillian Rehberg Goodman and she played the cello. Her husband, Saul Goodman is the celebrated tympanist of the New York Philharmonic and he was in a back row chewing his fingernails. Mrs. Goodman is no stranger to the concert hall having won a Naumberg award, toured the country and appeared with orchestras . . . One felt she was predominantly a lyric artist happy when she could pass her bow over the strings in a long delicate phrase . . . her phrasing in the Beethoven was the product of a very thoughtful musician."\*

Born in Chicago, Lillian was a student of Hans Hess and Alfred

Wallenstein, a product of the American Conservatory and the Chicago Musical College. A prodigy of Wallenstein's she subsequently continued her studies with Wallenstein in New York. She was a member of the Kneisel quartet and a winner of the first prize ever awarded to a cellist by the National Federation of Music Clubs.

Saul, her husband, was born in Brooklyn and joined the New York Philharmonic Symphony orchestra at the age of nineteen. He was a student of Alfred Frieze, former tympanist of the Philharmonic. Considered almost a child prodigy on this instrument, he quickly rose to his present position. Saul has played under the world's foremost conductors including a decade with Toscanini. He has written a book on Modern Method for Tympani, and plays on kettledrums of his own de-

\*Excerpts from the New York Times, April 19, 1958.



THE SPRING 1959 TRIANGLE OF MU PHI EPSILON

sign. A member of the Juilliard School of Music faculty since 1940, he was recently made a member of ASCAP for the compositions he has written for percussion.

Saul and Lillian have twin daughters, Ruth and Helen.

On a recent occasion Saul conducted two works by Villa Lobos written for eight celli, played by Lillian's students at Carnegie Hall. They both teach extensively in addition to performing publicly.—GLADYS SHAFER WIELAND, *New York City Alumnae Chapter*.

## JANICE & CHARLES BROADHURST

△ JUST recently having returned from entertaining on a Caribbean cruise, Janice Seward Broadhurst, soprano, and her husband, Charles Broadhurst, tenor, are back in New York City engaged in their professional music activities.

Janice is presently under the management of the National Music League, Inc., and is completing an

active season, having given a solo concert at the National Art Gallery in Washington, D. C.; she was soloist in Stravinsky's *Pulcinella* in Washington Square; performed with the Schola Cantorum under the direction of Hugh Ross; sang the role of "Micaela" with orchestra in Saginaw, Michigan. In addition, she is soloist at the First Presbyterian Church, Brooklyn, New York, and the Community Synagogue, Rye, New York.

This past year Charles has been touring with the "Men of Song," Male Quartet under National Concert Artist Corp., and the "New York Sextet" under Columbia Artist Management.

Both Janice and Charles are Kansas-born, Kansas-raised, and Kansas-trained. They are graduates of the University of Wichita where they obtained their Bachelor of Music Education Degrees, and both are winners of the Aristo Artist Awards, and each was presented in concert at Town Hall.—GLADYS SHAFER WIELAND, *Historian*.



THE SPRING 1959 TRIANGLE OF MU PHI EPSILON



# In The Picture Parade



Indiana University Singing Hoosiers and Queens who traveled through Europe (summer 1958) singing for the military installations under auspices of USO and Department of Defense. This group includes four members of Epsilon Omicron: Ellen Mahin, Janice Zimmerman, accompanists, and Betsy Kemmer and Jean Maiyo, soprano soloists.

Mr. George Krueger was the director of the Singing Hoosiers and Queens on their European trip. Mr. Krueger who is a professor at Indiana University Music School is one of the patrons of Epsilon Omicron chapter of Mu Phi Epsilon.



Kansas City Evening Alumnae Chapter: Seated, L. to R.: Doris McCall, Helen Swartz, Mary Ann Hanschu, Helen Mount, Georgie Lee Stutesman, Nancy Thompson. Standing: Roberta Younts, Meta Ann Knecht, Lucile Partridge, Dolores Mae Waters, Anita Strumillo.



# To Dorothy with Love



Dorothy Paton

During the war she was Mu Phi Epsilon's National Co-ordinator of the Department of Wartime Activities. An article by Dorothy (Dec. 1942 issue of THE TRIANGLE) made mention of the fact that "many chapters have already registered with the CDVO, USO, Red Cross, or some other service groups. Chapters are responding to calls from these groups for programs. Many concerts and entertainments for men in the armed forces are being given in camps and flying fields in various parts of the country." In 1943 Dorothy accepted a position with the War Department with its Tank Automotive Center of the Ordnance Department. Her title: Supervisor of the Requirements and Statistics Section of the Manufacturing Branch in Detroit.

△ It is with deep regret that National Council announces the resignation of Dorothy Paton as Finance Chairman, accompanied by a feeling of gratitude for long and loyal service to the sorority and appreciation of many services rendered.

Long and varied service to our beloved sorority marks the many fine contributions made by Dorothy Paton. Dorothy was convention chairman for the fabulous 1930 National Convention which was held at Mackinac Island. She was National President during the biennium of 1932-34. It was during her term of office that the plan for instruction class for all delegates was formulated and inaugurated at the 1934 convention. Also during this term, the post-convention council meeting for both past and newly elected national officers was authorized.

Dorothy has been National Finance Adviser for over ten years. Members of Councils past and present have always been amazed by her ability to present a budget for the ensuing year and to keep her fingers on the "financial pulse" of the sorority with such a high degree of accuracy. Dorothy often commented, "it was always a thrill to work out the proposed budget and then to come closely within it at the end of the year." Dorothy's genial and kindly spirit, her loyalty and invaluable advice and counsel, have played an important and lasting part in the structures and policies of Mu Phi Epsilon. Now, at the time of her resignation as our National Finance Chairman, we say our heartfelt thanks to a gallant woman and outstanding Mu Phi.



# Dr. Spaeth is Feted

△ Dr. Sigmund Spaeth, eminent musician, author, broadcaster, and speaker, is this year celebrating his Golden Anniversary in music. Many honors have been bestowed on Dr. Spaeth; including the Henry Hadley Medal and Phi Mu Alpha Sinfonia's "Man of Music" award. He helped found Community Concerts and for the first three years was managing director; he is a charter member of the National Music Council, a member of ASCAP, The National Committee for the Musical Arts, past president of NAACC, Phi Beta Kappa, Phi Mu Alpha, the University Glee Club, the Dutch Treat Club and the Bohemians. He has served for the past four years as president of the Braille Music In-

stitute and since 1955 has served as editor-in-chief of *Music Journal*. *Music Journal* will pay tribute to "America's Man of Music" with a special issue this spring. An entire section of the April-May issue will be devoted to articles and commentary on various aspects of his long and still active career. There will also be an opportunity for the friends of Dr. Spaeth to express their appreciation of his unselfish work for the advancement of music in the advertising columns of this issue. Mu Phi Epsilon will be listed among "Friends of Sigmund Spaeth." A substantial portion of this income will be used to establish scholarship funds at leading music schools and given to favorite charities.

## Mu Phi / Here 'n There

△ GENEVIEVE DAVISSON FRITTER won first prize in the Composition Contest for 1958 sponsored by the Friday Morning Music Club, of Washington, D. C. Her numerous compositions have been played and sung by several Washington Mu Phi for years, and she is always ready to compile a musical number "on occasion." Not only is she one of our top concert violinists in the District, but is also a very fine accompanist.

JANICE CARLANDER DOWNS, San Jose Alumnae, was violin soloist with the San Jose Symphony on February 7, 1959. An artist of great talent, she played Milhaud's *Second Concerto*.

ANN WETZEL, Evansville Alumnae, plays cello with the Evansville Philharmonic and in addition, travels over 2,000 miles to play a full season with the Nashville, Tennessee, Symphony Orchestra.

THE SPRING 1959 TRIANGLE OF MU PHI EPSILON

# MΦE Students In Europe

△ THIS summer Marna Adams of Omega Chapter was privileged to participate in a European Study Seminar in England, made up of students from Iowa colleges and universities.

Her first week abroad was spent in London attending such musical events as concerts by Van Cliburn and Zino Francescatti and the opera *Tristan Und Isolde*. A week of travel through northern England, Scotland and Wales followed. The end of the week found her in Oriel College, Oxford University beginning a month of study in a Social Science seminar. The month was filled with lectures, discussions and tours, helping the group learn more about the world and its problems. The next month she spent touring the continent by bus. First stop was the Brussels World's Fair, then through the Netherlands, Western Germany, Switzerland, Italy and France, ending the tour in Paris. In Verona, Italy, Marna saw *Aida* performed in a ruined coliseum by a cast of thousands.

Marna is now back at Drake with many lasting and wonderful memories of her summer abroad.—ROSALEE POINTS, *Historian*.

△ ELAINE GEORGE, winner of a Fulbright scholarship, is spending a year in Paris studying organ. At Oklahoma University, where she received her Bachelor of Music degree in organ, June, 1958, she studied with Miss Mildred Andrews.

Some of Elaine's activities and honors are Pi Kappa Lambda music society, Oklahoma Music Teachers Association, American Guild of Organists, Tassels, Mortar Board, Women's Choral Club, YWCA, Wesley Foundation, and of course Mu Phi Epsilon, of which she is past president. Elaine was named by Mortar Board as one of eighteen outstanding coeds on campus, a BWOC, and was on the 1957-58 list of Who's Who in American Colleges and Universities. Elaine has served as assistant organist for St. John's Episcopal Church, was the organist for the Orchestral club's presentation of "The Juggler of Notre Dame" and has given free instruction on the carillon chimes of the student union building.

Last spring, Elaine presented a concert in Shreveport, sponsored by the local chapter of the American Guild of Organists. In June, 1957, she won the regional competition in Fort Worth, sponsored by the Guild. In June, 1958, she competed in the national finals.

One of four organists in Paris on Fulbrights, Elaine is now studying organ with Pierre Cochereau, who is organist at Notre Dame. Elaine is also finding time for studying improvisations and French conversation as well as plenty of sight-seeing.

△ LOELLA SANSING received the degree of Master of Music in voice from the University of Oklahoma in 1955. Her teacher was

THE SPRING 1959 TRIANGLE OF MU PHI EPSILON



Joseph Benton. She has studied in Milan, Italy, since September of 1955 with Maestros Sernicoli and Simonetto. The latter is Leading Conductor of the National Radio and Television Symphony Orchestra of Italy. During the spring and early summer of 1957, she studied oratorio under Mr. Roy Henderson, Fellow of the Royal Academy, in London, England.

Loella made her concert debut in Rome, December 1, 1957, for the Society of the Friends of Music. She gave a completely different program the following month at the coveted "Presentation Concert" series at the Royal Conservatory G. Verdi in Milan and since that date she has been busy in Venice, Como, Milan and Rome. October 21, 1958, she was presented in a full evening's program by the Newspapermen's Union (Circolo della Stampa) in Milan. (Since this organization is made up of the greatest newspapers in Italy, to be engaged for a concert on their winter concert program is one of the highest honors that can come to a young musician—or to an experienced one.) In November, Loella sang a recital in Venice, featuring works of Mozart.

In February, Loella will return to the United States for auditions in New York and concerts in various cities until the spring of 1960 when she will return to Italy to be married

to a young chemist, Paolo Scarpa, in his home church in Venice.—  
NANCY STAGG, *Historian*.

△ MARTHA MILLEN of Omega Chapter set sail for the British Isles in September, 1957. After a quick tour of England, she reported to the University of Edinburgh in Scotland where she studied music for the entire academic school year. The Reid School of Music is only one small department or "faculty" as they are called, of the University, and is composed of about 45 students.

Martha was a violinist in the Reid orchestra, a semi-professional group as well as playing in the student orchestra and in a string orchestra which the violist of the New Edinburgh Quartet organized and conducted. She studied violin with the first violinist of this Quartet. Martha says, "All in all, I had a full academic year and enjoyed my courses immensely. Living among the Scottish people and doing things the way they do was an education in itself."

During vacations she caught glimpses of the Continent. Christmas she spent skiing in Norway and during the summer she toured Austria, France, Italy, and Germany among others.

Martha is now completing her senior year at Drake and is already making plans for a return trip.—  
ROSALEE POINTS, *Historian*.



THE SPRING 1959 TRIANGLE OF MU PHI EPSILON

# THE MΦE AWARD WINNERS

△ EACH year Mu Phi Epsilon awards to its outstanding collegiate chapter members and chapter service awards to collegiate and alumnae chapters. We are always proud of the achievements of individuals and chapters who through their excellence merit these awards.

**COLLEGIATE CHAPTER SERVICE AWARD:** *Gamma Chapter*. Honorable mention certificates were given to *Mu, Mu Beta, Mu Tau* and *Epsilon Mu*.

**ALUMNAE CHAPTER SERVICE AWARD:** *Los Angeles Alumnae* and *Kansas City Alumnae* tied for the award, with equal cash awards being received. Honorable mention certificates were given to *Ann Arbor, Fargo, Pittsburgh,* and *Wichita Alumnae chapters*.

**SENIOR ACHIEVEMENT AWARD** was won by NELITA ANN TRUE, *Gamma Chapter*, and carried with it the \$50 cash award and an Achievement Medal. In recognition of their leadership, achievement and scholarship, DORACE WEST, *Epsilon Kappa*; RUTH BARTLETT, *Mu Tau*; SALLY CALDWELL, *Mu Kappa*; SHARRON McCABE, *Nu*; BARBARA ROARK, *Mu Epsilon*; and BARBARA ENGLISH, *Epsilon Xi* were given honorable mention, receiving Achievement medals.

**MARIE MORISSEY KEITH \$100 AWARD:** *Phi Phi Chapter*. Next in order in improvement in grade averages over the previous year were: *Epsilon Upsilon, Phi Nu, Phi Omega, Phi Epsilon* and *Phi Sigma*.



## District Conference No. 10

△ An enthusiastic group representing the six chapters of District No. 10 met on the campus of Concordia College, Moorhead, Minn., on March 14, 1959.

A "get acquainted" tea at the home of Fargo Alumnae president, Hildur Shaw, was followed by initiation ceremonies conducted by Phi Iota chapter, which in turn was followed by a model pledging ceremony. The business meeting provided ample opportunity for a lively exchange of ideas, with Avanelle Poehler, District Director, presiding. Business delegates were: Ruth Langemo, Phi Iota; Louise Rardin, Mu Epsilon; Rita Andrescik, Phi Rho; Clara Anderson, Richfield Alumnae; Lucille O'Connell, Minneapolis Alumnae; Hildur Shaw, Fargo Alumnae.

A banquet by candlelight was followed by the program held at the Fine Arts Club in Fargo. Music delegates to the conference presented these groups of numbers: "Elizabeth's Prayer"—Wagner, "Twilight," "Gentle Greeting," "The Divine Ship," "Little Stone" from *Quiet Airs* by Ernst Bacon—Jeannette Courteau, soprano from Phi Rho chapter, accompanied by Ruth Havlik. Joan Freschett, Mu Epsilon, played Bach's *Italian Concerto* for piano. Lenita Chadima, contralto from Phi Iota chapter, sang: "Immer leiser Wird mein Schlummer-Brahms; "Maus fallen Spruchlein"—Hugo Wolf; "Nocturne"—Samuel Barber; she was accompanied by

Peter Nygard. Evalynn Rieke Shenk, violinist, and Margaret Schmitt, pianist, Minneapolis Alumnae, played the Brahms *Sonata in G Major*; Mary Margaret Poore, Richfield Alumnae, accompanied by Avanelle Poehler, sang a group of songs: "Mein madel hat einen Rosamund"—Brahms; "O Mio Babbino Caro"—Puccini; "Beau Soir"—Debussy; "Wild Geese"—Rogers; "The K'e"—Dougherty. Sigvald Thompson, violinist, accompanied by Faith Halverson, closed the program with Porpora-Kreisler's "Minuet" and "Rondo" by Mozart. A tea closed the day's festivities.

### 2 MU PHIS IN MET FINAL TRYOUTS

△ Former Washington State College students and members of Mu Beta Chapter of Mu Phi Epsilon Lily Carter and Frances Raymond Eickhoff were two of the three finalists chosen in a Metropolitan opera tryout for the Seattle-Tacoma area.

Lily Carter has had no additional training since graduating from WSC and is in her first semester of teaching. Frances Eickhoff married before graduating from WSC. She has four boys under six plus 35 music students and two choirs.

With much ambition, both girls tried out and were selected for the Western States Finals for the Metropolitan Opera Company.

## MΦE Sponsor for NFMC National Music Week

△ THE 36th annual observance of National Music Week will take place May 3-10, 1959. Sponsored by the National Federation of Music Clubs, schools, colleges, amateur and professional music groups, service clubs, educators and musicians in all phases of the profession will join in the celebration. Centered around the theme "There's Magic in Music," the objectives are to use music to demonstrate its pleasures and value to inspire amateur participation in music, to increase musical knowledge through study, and to develop more extensive understanding and appreciation of music. President Eisenhower has given his encouragement to National Music Week in the following message to Mrs. Ronald Dougan, president of NFMC: "The spirit and quality of music add much to the enjoyment of life. During National Music Week, extra attention can be given to strengthening

the standards and creative sources of music among our people."

Three famous musical anniversaries occurring in 1959 will be noted during Music Week: the bicentennial of the death of George Frederick Handel; the centenary of the birth of Victor Herbert; and the 150th anniversary of the birth of Felix Mendelssohn. Music of these composers will be featured in oratorio, operetta and orchestral concerts.

National Music Week was founded 36 years ago by C. M. Tremaine, of Westfield, N. J. Now approaching his 89th birthday, Mr. Tremaine is as enthusiastic about Music Week as he was in starting it. In looking to the future, he says, "Some day there will be a truly International Music Week as a harmonizing influence in the world's discords." Mu Phi Epsilon is proud to be among Contributing Sponsors for this important musical event.



Mu Phi Epsilon's contribution for the promotion of National Music Week is presented to Mrs. Ronald A. Dougan, right, president of the National Foundation of Music Clubs by Gertrude Otto, former National Fourth Vice President of MΦE.



# Worthy of Note



Beatrice Budinszky and Madelyn Robb

△ Connecticut Valley Alumnae has joined the growing list of alumnae chapters which are actively interested in giving their local collegiates support and encouragement. Proceeds from a concert given by the group have been used for the first of the annual scholarships to be given to Alpha Beta Chapter at Hartt College, to be awarded for musicianship and contribution to Alpha Beta Chapter. The presentation was made by Madelyn Robb, president of Connecticut Valley Alumnae, to Beatrix Budinszky, of Alpha Beta.

NEVA BARNARD, Evansville Alumnae, is director of the Oakland City College Glee Club, which sang at the Indiana Music Educators' Association Conference in November with distinct success. She is also vice president of the Indiana Federation of Music Clubs and Chairman of the Indiana Composers' Guild.

△ YVONNE SUNNEN, member of St. Louis County Alumnae Chapter, received the Sunnen Merit Award of the Sunnen Products Company, manufacturers of precision honing machines and automotive reconditioning equipment. Yvonne has directed a male quartet and a choral group made up of employes for the past four years and was given the merit award for her many hours of voluntary work. The vocal groups have sung at dinners of church groups, P.T.A. meetings, Cub Scout and Girl Scout banquets, and at monthly programs at the Old Folks Homes in the St. Louis area. Yvonne's husband, Eugene, is a member of both the quartet and chorus.



Yvonne Sunnen is here shown receiving the Sunnen Merit Award.



Back Row, left to right: Clarice Janssen, Betty Moorhead, Lorna Endersby, Ruth Partlo, Mary Beth Allen, Sheree Dee Weverstad, Patricia Miller, Kay Myron.  
Front Row, left to right: Sylvia Johansen, Theo Rayburn, Nancy Givson, Carol Lehman, and Dorothy Gurney.

Mu Tau  
Chapter  
Chorus  
At  
U of  
South  
Dakota

Mu Phi Epsilon Luncheon at MTNA Convention



Kansas City Alumnae were hostesses at a luncheon during the convention of the Music Teachers National Association in February. Pictured here are: Irene Sees, vice president of Kansas City Alumnae; Meta Ann Knecht, District Director (#12); Virginia Matthews, president of K.C. Alumnae; Mr. A. Walter Kramer, composer, editor, music critic; Merle Montgomery Kramer, president of New York Federation of Music Clubs and Educational Consultant for Oxford University Press; Ava Comin Case, concert pianist, professor of Music at U of Michigan and past national president of MΦE.



# In Memoriam

## ALMA STERLING FINDLAY



△ Alma Sterling Findlay, one of the thirteen charter members of Mu Phi Epsilon, died on November 20, 1958, in Cincinnati. Born in Cincinnati, she was graduated from the Cincinnati College of Music as a Gold Medal student in piano in 1902. She then studied voice and organ with Dr. W. S. Sterling, her uncle, at the Metropolitan College of Music where our beloved sorority was founded in 1903. She taught piano and voice privately for a number of years and was organist at a number of churches in Cincinnati and in Columbus, Ohio. Alma was a devoted member of her church and

a faithful organist for many years at the children's hospital. She is survived by a son, John, a grandson, and four sisters, two of whom are members of Mu Phi Epsilon.

## HELEN L. SCHWIN

△ HELEN L. SCHWIN, charter member of Central Chicago Alumnae Chapter, died on May 29, 1958. Initiated into Mu Phi Chapter at Baldwin-Wallace College, Helen was for several years active in the Cleveland Alumnae Chapter. Her undergraduate work was done at Oberlin College and Western Reserve University. She obtained her Master's Degree at Iowa University. For many years Helen was supervisor of music in the Cleveland elementary schools where she pioneered in the development of piano classes. At the same time she taught music education at Western Reserve U. She had as her prime interest that of training future teachers and in 1949 she was called to Chicago to become chairman of the Music Education Department of Roosevelt University. Respected and admired by students and colleagues alike, one of her former students has said of her: ". . . She imparted to her students a certain strength of understanding, perception, a sense of humor, graciousness, and dignity. Her seminars were a real inspiration and we left each class with greater confidence in ourselves. She always urged us to use individual creative initiative along with high technical

standards." In addition to MΦE, Helen was a member of Pi Lambda Theta, PEO, Delta Kappa Gamma, MENC, and American Childhood Education Association.

## LEOLA LOWRY



△ LEOLA LOWRY, Des Moines Alumnae, died in the latter part of August, 1958. We miss her gracious beauty, charm and willing service greatly. Whenever we had questions about rules of order, traditions, etc., Leola was always ready with the answer and helping in every situation. Leola majored in Music Education at Simpson College, Indianola, Iowa, where she became affiliated with Mu Alpha chapter. She did graduate work at Northwestern University and the U of Wisconsin. Leola taught in the public schools of Griswold and Indianola and also was on the staff of Simpson College. She became associate director of music in the Des Moines public schools until

her marriage. She helped her husband found the firm, "Service Photoprint" in 1946. Leola belonged to the Soroptimist Club and was the Des Moines representative to the American Federation of Soroptimist Clubs in New York in 1936. She was past president of Des Moines Alumnae of MΦE, a member of the Des Moines Women's Club, and the Home Builders Association Auxiliary. She was national president of her social sorority, Theta Upsilon, and also served as national chaplain and national vice president. She was more recently the chairman of its national advisory board and was Theta Upsilon's official delegate to National Panhellenic Conference.—GENEVA CARMAN.

## MABEL SHARP HERDIEN

△ MABEL SHARP HERDIEN, 79, died October 30 at the home of her son, Walter L., in Denver, Colo. Mabel was soprano soloist for 25 years with the Sunday Evening and the Apollo Clubs of Chicago. She was a member of the faculty of the Chicago Musical College for 35 years where she was a charter member of Iota Alpha chapter of Mu Phi Epsilon in that school. She also served as music supervisor of the Chicago Public Schools Americanization and Adult Education programs. She is survived by her son and three grandchildren.

Born in Kewanee, Mabel spent most of her professional life in Chicago where she was soloist many times with the Chicago Symphony and with other organizations and music festivals. She had lived with her son for the last four years.

She was devoted to Mu Phi Epsilon and was active with the Chicago



Alumnae chapter for many years and also maintained her interest in the activities of the Denver Alumnae, who visited her regularly and kept her informed of the sorority's activities there until the time of her death. Mabel was particularly proud of the Mu Phi Epsilon Gads Hill School of Music and considered it one of our most worthwhile projects. The Chicago Alumnae chapter is honoring her with a gift to the Gads Hill Memorial Fund.

### LUCRETIA JONES VALENTINE



△ LUCRETIA JONES VALENTINE, Cleveland Alumnae, died in June, 1958. Lucretia began her career as soprano soloist at Euclid Avenue Temple in Cleveland. She received her musical education in Cleveland, New York, Germany and other musical centers. In Germany an illness affected her voice and she then became accompanist for Johanna Gadski, Kitty Cheatham and other noted singers with whom she toured.

In Cleveland she organized the music department of YWCA and supervised sight saving classes in public schools. She was music director and piano teacher at Hawkin's school and Laurel School. Her club activities included Fortnightly Musical Club, Women's Music Teacher's and Ohio Federation of Music Clubs. She was also a member of the Finance Committee of NFMCA. Lucretia was greatly interested in young student groups and music therapy. Her talent for friendship brought her friends from all over the United States. Many Mu Phis will remember Lucretia as mistress of ceremonies at the national convention banquet in Cleveland.

### MARIE STRAIT TROTTER



△ MARIE STRAIT TROTTER died in Colorado Springs, December 25, 1958, after several months' illness. Although she had not lived in St. Louis for the past three years, the St. Louis Alumnae Chapter felt that she had never really left us in spirit.

Marie was initiated into Alpha Chapter, and in 1925, when moving to St. Louis with her husband, Bascom Trotter, and their daughter,

Betty Ann, she affiliated with the St. Louis Chapter. Until she moved to Colorado Springs, her home, filled with beautiful antiques inherited from her grandparents, was always at the disposal of the St. Louis Chapter for its meetings. As a singer and pianist, Marie was an excellent entertainer.

A famous English woman, Maude Royden, once said that in the French translation of the Sermon on the Mount, the third Beatitude was translated as, not "meek," but "Blessed are the debonair." This word perfectly describes Marie Trotter. With a debonair spirit she met the problems of life, and in the same way she met the knowledge of impending death. Her only wish was that she might live to spend Christmas with her family, and that wish was granted. She died Christmas night.—RUTH ROGERS JOHNSON, *Historian*.

### CHARLOTTE HULTHURST HUMMEL

△ CHARLOTTE HULTHURST HUMMEL, Lincoln Alumnae, died in Lincoln in December, 1958. Charlotte was a graduate of the University of Nebraska and American Conservatory of Music in Chicago. One of Lincoln's outstanding contraltos, she had sung for many years in quartets and was soloist at St. Paul's Methodist Church, Jewish Temple, First Baptist Church, First Presbyterian Church, Holy Trinity and First Plymouth Congregational Churches. Lincoln musical organizations had known Charlotte's fine participation and support for many years and she taught voice and piano at the University School of Music. She was a member of Matinee Musical and

Musical Arts Club and was chairman of the Music department of the Lincoln Women's Club. Charlotte also gave generously of her time and devotion to Westminster Presbyterian Church, Chapter K of P.E.O. and the Y.W.C.A.—JANESE RIDELL, *Lincoln Alumnae*.

### LISBETH TODD

△ FUNERAL rites for Lisbeth Todd, one of the last survivors of the original faculty at Southern Methodist University, were held Friday afternoon November 28, 1958. Lisbeth Todd died in a Dallas hospital following a heart attack. She began teaching in the music school at SMU with her husband, the late Harold Hart Todd, when the university was opened in 1915. They served some 35 years on the faculty before retiring. A native of Germany, Mrs. Todd was a direct descendant of Franz Gruber, the composer of "Silent Night." She came to the United States in 1910 and to Dallas shortly before joining the SMU faculty. She was a charter member of Mu Chi Chapter.

### HELEN TITUS

△ HELEN TITUS, Ann Arbor Alumnae, died in December, 1958. Untiring in her efforts to help any one with personal or musical problems, many sought her advice and through her encouragement and understanding, they invariably felt more confident to deal with their problems. Helen was initiated into Phi Epsilon at Emporia, Kansas. She served as supervisor of music in the Concordia, Kansas, public schools in 1929-33; was instructor in piano at the Foxhollow School for Girls in





Literature" in collaboration with Alice M. Kern—an outstanding contribution to the field of teaching. Her colleagues at the university and her many friends are deeply grateful to have had such a friend and sister in MΦE.—*MARIAN OWEN, Ann Arbor Alumnae.*

### HELEN S. LEAVITT

△ HELEN S. LEAVITT, Brookline, Massachusetts, died at her home in August. A pioneer teacher, lecturer, author, publisher, Helen was a "helping hand" to hundreds of students and well known for her many publications.

△ Miami Alumnae regrets to report the deaths of two Mu Phi Epsilon members; MYRTLE ENGLISH ASHWORTH, on September 21, 1958.

MARION HUTCHINSON McCRUDY, on October 24, at Coral Gables. Marion was soloist with many church and concert appearances. She was very active in musical circles in greater Miami.

Lenox, Mass. (1933-36); and at the Claremont Graduate School, California (summer 1941). She joined the U of Michigan faculty in 1936 as an instructor, was promoted to Assistant Professor in 1943 and to Associate Professor in 1954. Helen gave many solo and chamber music recitals, radio broadcasts and piano workshops. In 1954 she published "The Teacher's Guidebook to Piano



# Sharps and Flats

## ATLANTIC

BETA: As a Christmas activity, Beta Chapter at New England Conservatory, Boston, offered a concert in Mansfield, Mass. The program was given at the Mansfield Catholic Women's Club on December 11, 1958. It was organized and conducted by the secretary of Beta, Patricia Slattery. The chorus, under the direction of Patricia, sang, in our presentation of Christmas music, selections from Benjamin Britten's *Ceremony of Carols*. The program also included piano selections: "Danse," by Debussy, and Poulenc's *Sonate for Four Hands*. The former was performed by Patricia Slattery and the latter by Violetta de la Mata and Rosita Casonover, our two Beta girls from Puerto Rico. On the same program, Joseph Roche, violinist from Bombay, India, and Linda Dunlap, pianist, were guest performers from New England Conservatory of Music. Their interpretations of some violin and piano duets was warmly received by those in attendance.—*ROSITA CASONOVER, Historian.*

PSI CHAPTER: Last spring, Psi chapter at Bucknell University collected old music from patronesses and alumnae and sent it to Silliman University in the Philippines. This fall we received in return a book of Philippine folk songs. Early in October we held a tea in honor of the freshman girls interested in music and had an informal party during which we sang these Philippine songs. On Nov. 13, we celebrated Founders Day at the home of one of our patronesses, Mrs. Karl D. Hartzell. We presented an evening of varied entertainment which included a stringed ensemble and a speech by our past president, Ann Blake, who told us about her experiences at the national convention last summer. On Dec. 10, Psi combined with the Student American Guild of Organists in offering a Christmas program to Bucknell students and faculty members. Phyllis Gersbach, junior, B.S. in music, represented MΦE at

the dedication of a new building at Bucknell—Coleman Hall—on January 17. She sang a group of songs on this occasion.—*NANCY MOSHER, Historian.*

MU UPSILON CHAPTER has had a very busy and successful year so far. Besides the regular annual events, we have added some new ones. One of these new ventures was a joint concert with Phi Mu Alpha on October 17. It was a choral concert, offering Copland's *In the Beginning*. Another new idea was our Bohemian-style rush party entitled "Café Bohemia," which provided lots of fun and laughs for all the pledges (as well as the members)! Five new sisters were initiated on December 14. They are Sally Counts, Joan Harter, Joanne Lyman, Beverly McKay, and Doris Mohlie. Another new addition to the chapter is a quartet consisting of two violins, a flute, and a cello. The members are Doris Mohlie, Joan Harter, Sally Counts, and Tanya Lesinsky. On October 28 we held our annual Halloween party for the children of the Baden Street Settlement, and on December 11, our annual Christmas concert at the Presbyterian Old People's Home. Many of our members have been performing often, both here in Rochester and in other cities. Among them are Rosemary Crawford, soprano, who was soloist with the Rochester Civic Orchestra, and Jocelyn Sack, contralto, who sang with the Savannah Symphony in March. Members receiving the Performers Certificate this year are: Alice Gordon, oboe; Gail Guseman Barber, harp; Helen Bobbjerg, voice; Helen Shaffer, voice; Joanne Dickenson, flute; and Carol Luikart, organ. Our activities in the near future include a concert at the First Presbyterian Church here in Rochester, a concert at the University of Rochester river campus, and the annual dinner-dance on March 7 at the Rochester Club.—*LAURIE BOLVIG, Historian.*

PHI GAMMA CHAPTER presented their own musicale for their patrons on February 8. Those participating were: Bar-



bara Schurr, Suzann Meintzes, Estelle Edwards, Barbara Georg, chorister (who planned this event), Joanne Cohen, and Janet Rayburn. Another chapter project is our monthly radio program over the NBC affiliate—this under the direction of Barbara Schurr. The pledges enjoyed their project, which was performing at the Maryland School for the Blind. Several chapter members will be giving full recitals this year and Joanne Cohen will be soloist with the Peabody Orchestra.—KATHERINE PANAGOKAS, *Historian*.

PHI UPSILON CHAPTER began its fall activities by giving two programs for the children at the North Bennett School. On Nov. 13 our chapter joined with Beta and Boston Alumnae chapters for observance of Founders Day. Carol Fine, violinist, accompanied by Patricia Donnelly, and Patricia Flanagan, soprano, accompanied by Dorothy Govoni, represented our chapter in the program. Edith Stearns, faculty adviser, was the featured performer. Early in December our chapter, in collaboration with Phi Mu Alpha, gave a benefit concert for the Lucia Saylor Hersey scholarship fund, which featured Wilma Thompson and Edith Stearns as soloists. On Dec. 17 both fraternities and sororities of our school combined their talents to give a moving performance of the *Lord Nelson Mass* by Haydn. The two women soloists were Mu Phis Margaret Danford and Sylvia Marlette. Shortly before Christmas Phi Upsilon and the Phi Mu Alpha chapter combined to sing Christmas carols at the New England Medical Center.—ANNA LISA CHASIN, *Historian*.

PHI PSI CHAPTER began the new semester with the election of officers and pledges, who will be tapped next month. Phi Psi Chapter is very proud to announce that our sister Joyce Ann Moore will be president for the coming year. Eloise Hill, our district director, met with us on March 6 and 7 for the Work Party at which time the newly elected officers were installed. During this month some of the sisters of Phi Psi Chapter will have the honor of being present at the installation of a new Mu Phi Epsilon chapter at American University in Washington, D. C. Many of our sisters have been participat-

ing in the monthly student recitals. The next one will be March 16. Phi Psi Chapter is also planning the auditions next month for our Chapter scholarship in applied music.—MARY JANE FITZPATRICK, *Historian*.

PHI OMEGA began the school year with a get acquainted party for the women of the conservatory. Group singing and games started the evening's fun. This was followed by a skit depicting the student days of a typical music major at Westminster College in the form of a "This Is Your Life" program. The party was concluded with an explanation of the ideals of Mu Phi Epsilon and the serving of refreshments. We celebrated Founders Day with the Founders Day ceremony and a short musical program. Selections were presented by Betty Jean Casebar, Sheila Neely, Marilyn Moyer, Sandra Myers, Judy Webb, Judy Eckelmeier, and Carolyn Lance. The members have been kept busy selling magazine subscriptions and sang a Christmas carol program for shut-ins of the community. Our American music program was given for all of the students of the music department early in January.—SANDRA MYERS, *Historian*.

BOSTON ALUMNAE CHAPTER has had a colorful and interesting season. The first meeting of the fall was held at the home of Mae Reinstein. In observance of the Puccini Centennial a particularly delightful program was presented by Barbara Wallace, soprano, accompanied by Ruth Birch at the piano. In October Maria Pia Antonelli was the accompanist at the Harvard Club Library Concert when excerpts of Puccini's Operas were presented. A benefit recital was given at Boston University in November for the Lucia Saylor Hersey Scholarship Fund by two faculty members, Edith Stearns and Wilma Thompson, a charter member of Phi Upsilon. Una Allen, originally a member of Xi Chapter, was official representative for the University of Kansas at the inauguration of Robert L. Bertoli as President of the Massachusetts School of Arts. In January, Mae Reinstein gave a discourse and colored slide showing of the Benjamin Britten Opera, *Der Kleine Schornsteinfeger* (The Little Chimney Sweep).

This was of particular interest, as the pictures were taken during her son's performance in a leading role in this Opera in Munich, Germany, in 1957. This Opera was presented in English in December, 1950, at the John Golden Theatre, in New York City.—MAE REINSTEIN, *Historian*.

MIAMI ALUMNAE CHAPTER is in a unique position, geographically speaking, being over eight hundred miles from the nearest collegiate or alumnae chapter and hence not assigned to a district. The membership is made up of Mu Phis from many different schools, different sections of the country and now living in three counties of south Florida—Dade, Broward and Palm Beach. Most of the members are very active in music; five are church organists and teachers, three of them directing from two to four choirs. Louise Titcomb is dean of Miami Chapter of A.G.O. Other members teach piano or voice or public school music. Five are violinists and one has a dance studio. With all this talent available we are able to have some excellent programs. One of these was given in January when we entertained Alumnae Chapter of Sigma Alpha Iota at Athena Pitts home with the following: Fantasia for flute—Gaubert—Mary Lou Weaver, accompanied by Mary Ellison; Clown Dance by Grieg—Pupil of Louise Burkhardt; Three vocal numbers by Peggy Baster, pupil of Louise Titcomb who accompanied her; Dance Group—Circus Ballet; a group of piano solos by Francelle Bellenger.

The program of music by American composers at Zilpha Friedman's home in February follows: Two Preludes—George Gershwin by Zilpha Friedman; "The Spirit Flower"—Campbell-Tipton, "Goodnight, my Someone"—Meredith Willson, "Song of the Open"—Frank LaForge, sung by Carol McKinnon, soprano, Louise C. Titcomb at the piano; Caprice antique—Erno Balogh, "Allegro molto," from *Excursions*—Samuel Barber, by Mary Ellison; Poems No. 1 & 2 (after Omar Khayyam)—Arthur Foote, played by Louise C. Titcomb.

In March music and recordings by Mu Phis was featured and in April we will have our annual student recital. We observed Founders Day, have had music at

all meetings and have sent much music to the Philippines. Mu Phis vacationing in South Florida are always welcome and should contact our President for meeting dates.—ANNA OVERMAN SUHR, *Historian*.

ROCHESTER ALUMNAE CHAPTER began its 1958-59 season in October. At that time Margaret Guilbert entertained us at her home and Mildred Stalker gave a complete report on the Detroit convention. In November we celebrated Founders Day by having a dinner at the Sheraton Hotel and, following the dinner, those of us who had tickets, attended a violin recital given by Isaac Stern. Mrs. Harriet Read of Brockport, N. Y., entertained us in December and we had a most delightful Christmas party. Mr. Carl Wirth talked on the Rochester Community Music Program. At the January meeting which took place at the home of Helen Ferris, Gladys Rosseutscher and Ruth Watanabe showed pictures of the European tour which they took last summer. Hazel Duncan was to have had our February meeting at her home and the program was to include piano numbers by Miss Helen Howe and Mrs. Duncan was to play some recordings she had available. Unfortunately inclement weather necessitated cancellation. An extra business meeting took place February 18. In March Ruth Watanabe gave a talk on madrigals. In April we will have our annual silver tea and our annual picnic will take place in May.—HELEN HOWE, *Historian*.

## GREAT LAKES

GAMMA CHAPTER at the U. of Michigan concluded the Fall semester with the annual Christmas-Patroness Musicales which was held December 14. The musical portion of the program consisted of two Brahms songs, "Longing at Rest" and "Virgin's Cradle Song," sung by Mimi Barndt, soprano, accompanied by Nancy Farrand, viola, and Barbara Barclay, piano; J. C. Bach's *Sonata in B Major*, Linda Lundquist, piano; "Before the Paling of the Stars" by A. Walter Kramer—Marianne Davidson, soprano, accompanied by Mimi Barndt; and the Gamma choir, directed by Helga Frank



and accompanied by Marlane Paxson, which performed Gaul's "Christ of the Snow" and Kountz's "The Sleigh." The speaker for the evening was Dr. Louise Cuyler of the Musicology Department at the University.

The second semester began with initiation February 8. The new officers were elected at a business meeting on March 18. Following the meeting the new initiates presented a musicale which included "Chant Slave" by Barat played by Sandy Hosmer, clarinet, accompanied by Karen Klipec; three Schumann songs—Karen Klipec, soprano, accompanied by Nancy Hallsten; and the first public performance of *More Limericks*, a set of songs by Wallace Berry of the University Theory Department sung by Frances Tollas, soprano, accompanied by Dr. Berry. A reception for the new initiates with refreshments served by the Alumnae Chapter followed the Musicales.

District Director Katherine Newhouse paid her first visit to Gamma on Saturday, March 21. After the formal business meeting, the chapter gave a Musicales which consisted of "Chant Slave" by Barat played by Sandy Hosmer, clarinet, accompanied by Laurie Lindemulder; Chopin's "Ballade in A-flat" played by Caryl Miller; and two Bellini songs sung by Janet Ast, soprano, accompanied by Nelita True. The new initiates then presented *The Plain Princess and the Lazy Prince*, a music-drama by Nancy Crawford, a graduate student in music education. This skit had originally been given at the Children's Psychiatric Ward of University Hospital as a pledge project. Coming events for Gamma include installation of officers, March 8; the American Musicales, March 22, with Dr. H. Wiley Hitchcock of the Music Literature Department as guest speaker; and the Freshman Musicales honoring all freshman women in the School of Music to be held April 19.—MARIANNE DAVIDSON, *Publicity*.

EPSILON has had a busy and successful year. We began our calendar of events with a rush tea in October, at the home of Gratia Smith, one of our advisers. Included on the program were vocal solos by Barbara Ginther and Mary Ann Kramer, accompanied by Ester West, our second faithful adviser. We later

held pledging at Ester West's home at which time three girls pledged. The high point of November for Epsilon was our joint celebration of Founders Day with the Toledo Alumnae Chapter. The bonds between our active chapter and the alumnae chapter were certainly strengthened that evening. In December pledges and chapter members gave a Christmas program at the Crippled Children's Hospital in Toledo, singing well-known Christmas carols and songs for the children. I don't know who was made happier by the program, the children or we. It certainly gladdened our hearts to see the joy we brought to them. We also held a holiday date party during December for pledges, actives, and dates.

Several members of the Toledo Alumnae Chapter graciously offered to assist at the Initiation of Ann Makowski and Ruth Frey. We were pleased to have with us Rose Bruno, Roberta Steinberg, Ruth Hickerson, Gratia Smith, and Ester West. Our calendar of planned events for this spring is full. Included on our schedule of events are a Rush Luncheon on March 6, Pledging March 15. District Conference April 11 at the University, Initiation April 26, and a Senior Banquet and public program. Our spirits and enthusiasm are high, and we are looking forward to an even better year next year.—BARBARA GINTHER.

PHI CHAPTER has had success in all projects and undertakings. Our Mu Phi activities thus far this year include collecting and sending music overseas; selling Christmas cards; selling refreshments after the final *Messiah* rehearsal to members of the chorus and orchestra; and bringing some pleasant musical experiences to a class of young retarded children here in Alliance. This last project in particular has given many of us who are future music teachers an opportunity to really utilize what we have learned here at Mount Union, as well as bringing some enjoyment and inspiration into the lives of these handicapped children. In addition to these previously mentioned projects, our chapter always takes care of all receptions preceding orchestra and band concerts, faculty and student recitals. Our first Mu Phi recital of the year was presented on the after-

noon of November 16, after which we had a tea in honor of two new patronesses, Mrs. Steven Malycke and Mrs. Howard Pearsol. One of Phi chapter's members, Nancy Beck Naefie, presented her Senior Recital this year—half her program performed on the violin and the other half on the piano. Judith Warren also presented her Junior Voice Recital. Another member, Sue Risher, will present her Senior Voice Recital in May. In the spring Phi Chapter will present its second recital of the year consisting wholly of contemporary music. Also this year, we were so happy to be asked by the chapel committee to provide music for one of the college chapel programs.—JUDY WARREN, *Historian*.

MU XI has held successful rush parties, one of which was held in the home of Helen Maxwell. Barbara Cariato, soprano, sang at the Panhellenic Tea and marimbist, Joan Wilson, played her own arrangement of folk songs at the formal party held in the Fine Arts Building. We are proud to report the pledging and initiation of four new talented sisters. Our annual Scholarship Benefit Concert will be given by our adviser, Edith Aamodt, teacher of piano at the American Conservatory of Music, and Peggy Smith, soprano. Edith Aamodt will play selections by Brahms, Grieg and Ravel; Peggy will sing selections from the new song cycle "Songs of Innocence" by Norman Curtis, with the composer at the piano. A capacity audience is expected at the Lyon-Healy Concert Hall.—BARBARA CARIATO, *Historian*.

MU PHI CHAPTER at Baldwin-Wallace College gave a tea in the fall for the freshmen and an installation ceremony for our new patrons and patronesses. On Feb. 5 we joined with Phi Mu Alpha Sinfonia to give an assembly program. Each group sang several numbers separately and then combined voices into an eight-part religious work entitled *The Peaceable Kingdom* by Randall Thompson. Gloria Taylor was Mu Phi's very able director. Sceola Whipkey, Margaret Phillips, Betty Joslyn, Sandra Watson, and Sally Stout had roles in the B-W opera presentation, Mozart's *The Marriage of Figaro*. A work party and in-

stallation ceremony for officers was held on March 2. We were privileged to sing on March 3 for the Martha Rest Home in Berea. A spring conservatory formal is being planned with ΦMA for April 3. This is a big annual event for music majors and is open to anyone who has taken at least one credit hour in music.—NANCY CALLAWAY, *Historian*.

PHI OMICRON CHAPTER initiated ten members on January 11, 1959: Sheila Braidech, Janis Grumbles, Donna Hurley, Anita Johnston, Magda-Lynn Kachmar, Faye Liebman, Delores McCann, Anne Mulholland, Joan Sesnack, and Vernell Taylor. Following the initiation ceremony, a musical program was given by the initiates. Another highlight of our winter season was a combined program with the Cleveland Heights Alumnae Chapter, which took place on February 10, 1959. The Phi Omicrons who participated were vocalists: Faye Liebman, Virginia Allen, Magdo-Lynn Kachmar, Rosalind Rees, Anita Johnston, Delores McCann, Joan Sesnack, and Juliann Luiza. Their selections ranged from songs by Schumann, Brahms, Puccini, and early English to Debussy and contemporary folk music. Phyllis Pozar and Patricia O'Brien were the accompanists. Music by Faure and Telemann was played by Roberta Strawn and Edith Kornfeind, violinists. In February, our chapter shared in an interesting program with the Cleveland Institute of Music and the Cleveland Institute of Art. Each of the arts presented a brief summary and examples of what their particular fields had done to alter, and in turn to be altered by the patterns of history. This experimental program is one of many, which both student bodies hope will bring more understanding and a better relationship between the two institutions. Our two harpists, Janis Grumbles and Vernell Taylor, participated in the Mid-Western Harp Festival, held at Ball State College in Muncie, Indiana. Late winter and early spring spell recital time. Our calendar is as follows: Senior recitals: Joan Sesnack, a Western Reserve University voice major; Rosalind Rees, soprano; Delores McCann, contralto. Another senior graduating this year is Cecelia Sobocki, a theory major, who is already engaged in a very active teaching career. Junior recitals:



Roberta Strawn, violin; Juliann Luiza, soprano; Virginia Allen, contralto, assisted by Phyllis Pozar, piano; Edith Kornfeind, violin; Rose Kocina, violin. Spring also brings the annual Collegium Musicum, given at The Cleveland Institute of Music. Many of our sisters will participate. Edith Kornfeind, Roberta Strawn, and Rose Kocina will blend their strings in a small ensemble. Rosalind Rees, Juliann Luiza, and Faye Liebman have solos in *Psalm 112* by Haydn. Phyllis Pozar will exhibit her talents at the harpsichord, and many of our sisters will sing in the Institute Chorus.—MAGDA-LYNN KACHMAR, *Historian*.

**EPSILON XI CHAPTER:** The spring semester began with the election of new officers. They are Lois Doniger, president; Nancy Knosher, vice-president; Elizabeth McHose, secretary; Deanne Africk, treasurer; Elaine Holmes, historian; and Donna Tredrea, chaplain. Attending our installation of officers and work party on February 21 was our district director, Camilla Ayers, who gave us many wonderful suggestions for our rush parties. The following day we gave a scholarship musicale with the Urbana-Champaign Alumnae Chapter at the home of President and Mrs. David Dodds Henry. Nancy Jo Williams, soprano, Donna Tredrea, violinist, Elaine Holmes, pianist, and Nancy Knosher, cellist, were the collegiates who performed on the program. Epsilon Xi's annual Freshman Achievement Award was presented to Judith Morse at the Music School Convocation on February 26. Our rush parties were held in March. We plan to have our new pledges appear on a series of radio programs over university station WILL.—ELAINE HOLMES, *Historian*.

**CENTRAL CHICAGO ALUMNAE CHAPTER:** Among our members we are proud to have a well-known and very erudite musicologist, an orchestra conductor and a composer who carries off many important national prizes. Our musicologist, Elizabeth Kidd, gave a talk on the "Music and Musical Instruments of Modern Greece" at the Society of Ethnomusicology at Harvard University on December 30, 1958. She exhibited Indo-

nesian musical instruments and materials of Indonesia at the YMCA International Exhibit at the McCormick Building in Chicago on November 16, 1958. Lillian Poenisch is the conductor of the West Side Symphony Orchestra (Chicago) and recently conducted a very fine performance at La Follette Park, programming among other compositions Beethoven's Fourth Symphony. On November 14 her orchestra gave a concert at Maria High School. Among other numbers presented were excerpts from Rimsky-Korsakoff's "Scheherazade" and Sibelius' "Finlandia." Our composer, Blythe Owen, entertained our members and guests in her home on Valentine's day. We persuaded her to present some of her compositions. The program included trios, performed by Glennis Stout, flute; Lillian Poenisch, clarinet; and Blythe Owen, piano. Miriam Knauf sang some of Blythe's songs with Mary Ruth Craven at the piano. Marian Hall and Blythe played some delightful two-piano numbers. Cara Verson is departing somewhat from the general field of modern music, in which she has been interested for so long, and is concentrating on that of Spain. She gave a Causerie recital of Spanish music, all by Spanish composers, some of whom employed dance forms using the folk rhythms. On February 22, 1959, we participated in the annual inter-chapter program at the Mu Phi Epsilon School of Music at Gads Hill Center. Miriam Knauf represented us, singing two of Blythe Owen's songs in her group. Mary Ruth Craven was at the piano.—CARA VERSON, *Historian*.

**CHICAGO ALUMNAE CHAPTER:** The Christmas Season was ushered in at our December meeting held at the home of Cathryn Bennett. Our distinguished guest was Dr. Rudolph Ganz, a nation patron of Mu Phi Epsilon, who reminisced of his experiences with musicians and music. This was followed by jubilant singing of Christmas carols. At the January meeting at the Cordon Club, the following patronesses were installed. Mrs. Frederick Herrschner, Mrs. Harold Moran, Mrs. J. J. Kilgallen, and Mrs. Joseph Mikolas. Among the celebrated guests of the day were Marie Morrisey Keith, Mrs. Philip Maxwell, Mrs. Hugo Dalmar

(a patroness of long standing), and Dr. Rudolph Ganz. The program consisted of Mary Stearns, pianist and Shirley Norberg, violinist. An American music program was presented by Leila Smith, soprano, and Evelyn Russell, pianist at the February luncheon. Several of our members participated in the activities of the 1958 Chicagoland Music Festival, presented at Soldier's Field in August. Mu Phi Epsilon was represented by a complete table at the luncheon preceding the Festival, at the Grand ballroom of the Conrad Hilton Hotel. Carol Smith, contralto, was a soloist on the program. Paula Doerring was one of the judges for the Festival contestants, Cathryn Bennett accompanied one of the soloists and also played *Our Triangle* when Helen Maxwell was introduced. Another of our members performing in the Chicago area was Malvina Hoffmann, who played violin solos at the Arche Club. Eugenia Anderson is President of the Chicago Club of Women Organists, which is composed of Women Church and concert organists of the Chicago Metropolitan area.—MRS. WILLARD NORBERG.

**THE EVANSTON-NORTH SHORE ALUMNAE CHAPTER** is drawing to a close, one of its most interesting and constructive years. This has been a very special year for us as it has marked our tenth anniversary. At our first meeting in October held at the home of Elizabeth Ayres Kidd we celebrated our very important birthday in a most fitting way and the presence of our beloved and honored President, Rosalie Speciale, added very much to the pleasure and glamour of the occasion. Monthly business meetings and programs have been held. Many new sisters have been warmly welcomed into our Chapter. As in the past our members have continued to participate in musical projects, recitals, and have gained recognition in cultural circles. We have continued our service of music in hospitals, Homes for older people and in every way have endeavored to promote the very real and valuable aspects of Mu Phi Epsilon. Our hearts were saddened by the very sudden death of our beloved sister, Agathe Haenel, but the lovely memories of her life, her charac-

ter and her music will forever be a beautiful harmony in our minds. For all the beautiful ideals of Mu Phi Epsilon and for their lasting values we are ever increasingly grateful.—MARGARET MCARTHUR, *Historian*.

**CHAMPAIGN-URBANA ALUMNAE CHAPTER** began the fall season with a picnic to which members of Epsilon Xi and patronesses were invited. Our Founders Day program was highlighted with the installation of a new patroness—Mrs. Frederick Seitz, an outstanding pianist and wife of the head of the Physics Dept. at the U of Illinois. At our December Christmas party we were privileged to see the slides taken by Dorothy Bowen during her sabbatical leave in 1958. Alumnae and collegiates appeared at the Champaign County Nursing Home during the season. In addition to the musical portions of each regular meeting, our chapter is presenting two guest programs. The first was held Feb. 22 at the home of President and Mrs. David Dodds Henry. This was a project for raising money for our scholarship fund with collegiates participating. Those appearing were: Nancy Jo Williams, soprano, Donna Iredea, violinist; Elaine Holmes, pianist, Nancy Knosher, cellist; Dorothy Bowen, soprano, Mrs. Paul Rolland, pianist; Mrs. Robert Kelly, violinist; Mrs. L. Thomas Fredrickson, pianist. The scholarship is presented by both collegiates and alumnae chapters each year to the freshman woman music major with the highest all-university grade average. Our second guest program will be held in April when we will have as our guests members of the alumnae chapter of SAI. We enjoy this custom of sharing programs with them. We look forward to the annual buffet supper in May for the graduating senior of Epsilon Xi.—MARGARET KHACHATURIAN, *Historian*.

## EAST CENTRAL

**ZETA CHAPTER** held its Founders Day Ceremony and Banquet on Nov. 13 at the Student Union Building with nearby alumnae present. Following the banquet a report on the 1959 National Conven-



tion was given by Trish Myers who was our chapter representative at Detroit. The initiation of Barbara Michie and Helen Glyod took place on Nov. 21. A banquet was held in their honor on the following Sunday. Our 1958 fall pledges included Barbara Stevenson, Karen Tyler, Jo-Ann Riechers and Sara Copeland of DePauw's School of Music, and Tucky Monroe and Dianne Moore, both in the college of Liberal Arts. These girls presented a Mu Phi Epsilon Recital on the afternoon of Feb. 18 and were initiated that evening. In November, Lynn Anderson, a senior Mu Phi performed the third movement of Rachmaninoff's *First Piano Concerto* with the DePauw Symphony Orchestra. Lynn also performed this work on the fall orchestra tour. Zeta, together with the DePauw chapters of Phi Mu Alpha and Pi Kappa Lambda, sponsored a harpsichord recital on December 6 given by performer-lecturer Mr. George Lucktenburg. In February DePauw's Opera Workshop presented Gian-Carlo Menotti's *Saint of Blecker Street*. Tucky Monroe and Barbara Stevenson sang leading roles. Several other members of Zeta Chapter took part in this production.—PATTI FOGLE, *Historian*.

KAPPA CHAPTER began the year with a Panhellenic reception for the freshman girls. The musical program given by members of MΦE and SAI was enjoyed by all. On Oct. 19, we held our fall fiesta, an informal rush party at the home of Marion Betty, MΦ alumna. Five chapter members gave a recital of their students on Oct. 25. The program included piano, violin and clarinet solos as well as duets. Founders Day was observed together with Indianapolis Alumnae and the Patroness group. Perla Zulueta, Kappa, played two piano solos for the program. Our formal rush was held at the home of a patroness, Mrs. Allen B. Conant. The program centered around the life and music of Rachmaninoff. Mary Hagopian and Dorothy Munger of the Alumnae chapter performed this music and Mrs. M. O. Ross, patroness, and wife of Butler University's president, reviewed Rachmaninoff's life in an enjoyable and informative manner. Our final rush party was held on Feb. 8 at which time our rushees performed for us. The schedule for the remaining months of

school includes initiation and banquet, an American Music recital with Sigma Alpha Iota and Phi Mu Alpha, and a gay party to close the year—"June Frolic."—JOYCE TAYLOR, *Historian*.

MU DELTA: Having the National Music Teachers Association Convention in Kansas City this year gave Mu Delta Chapter the honor, and opportunity to entertain and perform. The Opera Work Shop of the Conservatory of Music presented Gian-Carlo Menotti's *The Medium*. Mu Delta was represented by our Recording Secretary, Judy Volkowitz, who sang the role of "Monica" and by our Treasurer, Marilyn Muir, who sang the role of "Mrs. Gobineau." We opened the season with a Morning of Music Convocation held on December 17, 1958. It was our annual Convocation held in Grant Hall, Russel Stover Auditorium. Appearing on the program were: Barbara Adams—vocal selections by Ernest Charles, Albert Hay Mallott, and Gian-Carlo Menotti; Phyllis Petkoff—three piano sonatas by Scarlatti; Judy Volkowitz—vocal selections by G. Donizetti, and Riccardo Drigo; Verna Brackenreed (faculty advisor)—piano selections by Debussy; Denise Morand (cello)—member of the Kansas City Philharmonic. All were accompanied by Pearl Roemer Kelly. Mu Delta held their Rush Party at the Carriage Club of Kansas City. There was an excellent attendance, with several patronesses and alumnae present. After the dinner and program, our president, Phyllis Petkoff, welcomed the guests. Joanne Baker of Phi Phi Chapter delivered a small talk. One of our new pledges, Nancy Elaine Rusk, has been chosen to appear on a forthcoming Ted Mack television program. Mu Delta is proud of Marlys Watters, former member of Mu Delta, who is starring in the *West Side Story*. We are looking forward to Phyllis Petkoff's Senior Recital at the piano, and to Shirley Decker's Senior Violin Recital, both of these to be given late this spring.—JUDY VOLKUWITZ.

PHI THETA CHAPTER was represented by its president Elizabeth Butler at the National Convention in Detroit last summer. Also in June, Mu Phi members Mary Ellen Wall, Elizabeth Butler, and Elaine Lunt participated in the vocal en-

semble which sang a program for the National Convention of Presbyterian Women at Purdue University. All music majors in the freshman class were invited to an informal rush party in October. In November, our Founders Day Tea was held for all faculty members. Elizabeth Butler, Elizabeth Bohn, Mary Ellen Wall, and Mary Kay Pagel presented the program after the introduction of our special guest, Elizabeth Buck, District Director. Phi Theta Chapter attended and took part in the program at the Founders Day Dinner given by the St. Louis Alumnae Chapters at the La Chateau in St. Louis. In December Nancy Ordelleheide, a member of the chorus of the Bach Society of St. Louis, participated in the annual Christmas concert. Several Mu Phis appeared in a special, all-school convocation recital in January: Elizabeth Butler, Elizabeth Bohn, Mary Taylor, Mary Kay Pagel. Elizabeth Butler sang for the wedding of a graduating Mu Phi sister, Mary Ellen Wall; members of Phi Theta participated in the reception. Karen Glaser, pianist, represented Phi Theta in the Lenten Musicale, presented in February by the St. Louis Alumnae chapters at Washington University. February 20, we initiated three pledges, Shirley Lee, Cynthia Krueger, and Hiroko Fujiwara. At an informal party after the initiation, new officers were elected. Elizabeth Butler was a winner in the vocal division of the Young Artist Contest in St. Louis. She will appear in concert with the other winners in April. An informal buffet supper for our patrons is scheduled for March along with a work party with Elizabeth Buck and the new officers. February 27, we pledged a senior Music education major, Martha Hard, who was initiated in March. Our annual spring concert will be presented May 24.

Phi Theta Alumna, Elaine Lunt, is studying in Germany at the University of Heidelberg; another alumna Grete Rehg is studying at the University of Iowa.

Mary Green received the '58-'59 Presser award in the Music Department.

EPSILON GAMMA CHAPTER at Belhaven College received a special treat for Valentine's Day. Elizabeth Buck, our Dis-

trict Director, joined us at a Work Party during which plans were made for the coming year and the coming pledging period. At dinner after the short working session, we were able to know another Mu Phi much better. Again, we were grateful for the association we have with such interesting people through our sorority. Belhaven College is celebrating her Seventy-fifth Anniversary this year. In honor of the Diamond Jubilee year and Alumnae Day, five Belhaven alumnae presented a beautiful recital. All of these being Mu Phis, they are continuing their musical endeavors in their respective communities. Sara Ruth Cole, the mother of two boys, a piano teacher in Moss Point, Mississippi, and a member of the local music club, played "General Lavine—Eccentric," Debussy; "The Maid With the Flaxen Hair," Debussy; and "Fantasie Impromptu," Chopin. Betty Monette White, who is doing work with the New Orleans Opera Company and the Experimental Opera Company and is the soloist for two churches in New Orleans, sang "Im Herbst," Franz; "Die Mainacht," Brahms; "Mon Coeur S'ouvre a ta Voix," Saint-Saens; "Stride La Vampa," from *Il Trovatore*, Verdi; and "Through the Years," Youmans. She was accompanied by Edith McDaniel, a former piano teacher at Belhaven College who is now teaching privately. Cynthia Knight Bogdahn, the mother of three children, president of the Music Club in Pascagoula, Miss., a Member of the Philanthropic Educational Organization, and a piano teacher, played *Sonata XVI*, Mozart; and "Ballade in G minor," Chopin. Sarastelle Sigrest, the mother of three children, a full-time artist for the Mississippi Highway Department, sang "Regnava nel Silenzio" from *Lucia di Lammermoor*, Donizetti; "Hymn to the Sun" from *Le Coq d'Or*, Rimsky-Korsakoff; and "Tell Me, Oh Blue, Blue Sky," Giannini. A lovely reception followed the recital for which the Jackson alumnae members were hostesses.—ROXANN COX, *Alumnae Secretary*.

EPSILON OMICRON: Four members of Epsilon Omicron, Janis Zimmerman, Ellen Mahin, Betsy Kemmer, and Jean Maiyo were chosen to travel with the Singing Hoosiers and the Queens on their European tour last summer. During the year



its members have participated in presentations of *The Masked Ball*, *Madame Butterfly*, *Don Giovanni*, and many of the girls were in the chorus that sang Beethoven's Ninth Symphony with the IU Symphony and Rachmaninoff's *The Bells* with the Indianapolis Symphony. Skaidrite Lidmus, one of our past Presidents, sang the female lead in the Latvian operetta *Mucenīeks un Muceniece*. She traveled across the country singing 15 performances in all. The operetta is the first Latvian operetta written and also the first performed in America. Skaidrite, who was born in Latvia and moved to the United States in 1950, is a senior at IU. During the year several of our members have sung their senior recitals. Those included are: Virginia Aldridge, Carole Boyd, Betty Ledman, Jean Maiyo, and Myrna Trowbridge. Ellen Mahin was the musical composer for the show to be given this year for the Jordan River Review.—VIRGINIA ALDRIDGE, *Epsilon Omicron*.



Skaidrite Lidmus

ALPHA ALPHA began the year by meeting with the two local Alumnae chapters; at that time, convention reports were given and entertainment was provided by the alums. In October, we gave a recital in concert hall and in November we started a series of Lecture-Recitals to be given

at the school. The first in the series was a folk-music recital with narration and musical examples presented by the girls. Also in November, we had a Founders Day Tea with the alums; the collegiate chapter provided entertainment and Janet Lindecker spoke. We also had an installation of patrons and plans were made to install Maestro and Mrs. Max Rudolf as patron and patroness of Alpha Alpha. In December, we gave a joint recital with Phi Mu Alpha, Sinfonia; it gave an opportunity for much ensemble work and a jointly sponsored reception was given afterward. At the request of the alumnae, the collegiate chapter provided a program of vocal music for the MRS Club of the University of Cincinnati and the Hyde Park W. S. C. S. On February 2, our annual rush party was held at the home of Miss Natalie Robinson; our theme was history of music and there were 70 rushees, alums and patrons in attendance. On February 8, we had formal pledging for 13 girls into Alpha Alpha Chapter.

We are now busy planning money making projects for the spring. We are also planning two more lecture-recitals—one on the evolution of opera, presented in March; the other on the music of Debussy—to be presented in April. These recitals will be given, plus our pledge recital, which will be open to the public this year. On the 14th of February, our new officers were installed, headed by Phyllis Willis, our new president—MARILYN TURNER, *Historian*.

ALPHA GAMMA CHAPTER opened its 1958-59 season with two parties. The first was an informal get-together for members to get better acquainted with the rushees. Next was a tea given for the rushees to learn more about Mu Phi. From this we gained six new pledges. Plans are now under way for spring rushing of freshmen and transfer students. The theme of our party will be "An Oriental Garden," and the menu, decorations, and costumes are being planned accordingly. Our musicals got under way with a closed program by several of our members at the end of the fall quarter. This gave us an opportunity to practice for our juries and also to hear other members perform. Our second musical

was given by George Imbraglio, a member of our piano faculty. He presented an excellent hour of enjoyment with compositions by Schumann, Pinto, Debussy, and Chopin. Four other musicals have been planned for the remainder of the year, including a joint recital with the Eta Phi Chapter of Phi Mu Alpha Sinfonia. The theme of this program will be "American Music." Our main fund-raising project, which is selling food on an assigned night in the girls dormitories, has been quite successful. In early December, we sold Christmas cards and this proved to be a most rewarding project. On Feb. 19, new officers were installed. After installation service, a work party was held at which our District Director, Betty Buck, took inventory of our chapter. Refreshments were served afterward and a short musical program was given by several of our pledges. One of the delightful numbers presented was an original composition entitled "There Ain't Nothin' Like Mu Phi," written by two of our senior pledges.—REBECCA RAMSEY, *Historian*.

KANSAS CITY EVENING ALUMNAE: The chapter has recently added three new members: Earlene Strong, Bonnie Tumino, and Anita Strumillo. Each chapter meeting this year has included a program by one or more of our members. The January program was given by Mary Ann Hanschu and Georgie Lee Stutesman who gave a résumé of the methods they use in teaching school music. Mary Ann teaches elementary school music and Georgie Lee junior high music. Georgie Lee also brought four girls from her school, a trio and their accompanist, who sang two numbers. Our February meeting featured organ music.—DORIS McCALL, *Historian*.

## NORTH CENTRAL

MU TAU CHAPTER of Mu Phi Epsilon began its year's activities with a get-acquainted watermelon Feed and S'more's Party for the Music Department. This party was jointly sponsored with Phi Mu Alpha (Sinfonia). On October 22 we pledged three girls who were initiated in January. They are: Nancy Gibson, Clarice Janssen and Sheree Dee Weverstad.

THE SPRING 1959 TRIANGLE OF MU PHI EPSILON

Following the initiation ceremony, our faculty advisor, Miss Truran, had a tea at her home in honor of the new initiates. A chorus composed of MΦE and Phi Mu Alpha members sang a group of songs composed by South Dakota composers for a meeting of the South Dakota Music Teachers Association in November which was held here on our campus. This chorus also sang a group of songs on a convocation program sponsored by these two organizations later in the month. The joint convocation featured solos and ensemble numbers performed by members of both groups. We held our Founders Day Tea on November 9. This tea was also a Rushing Tea and was very well attended. Our representative to the National Convention spoke to us on her experiences at the convention and shared with us some of the enthusiasm she had taken home with her from the convention. The Tea was highlighted by a short musicale. February 12 was the date of our Annual Spring Recital of American Music. Both vocal and instrumental selections were included on the program. We pledged seven girls in a ceremony held on February 25. They were: Marlene Gutzman, Charlene Hofer, Sharon Parker, Nellene Pilliard, Bonnie Raasch, Joan Radeke and Elizabeth Towne. Miss Janese Ridell, our district director, visited us on February 27. We had our installation of new officers at that time and a work party. The day was concluded by a dinner and musicale at the home of one of our alumna. On March 15 our group went to Sioux City to give a program at a Children's Home. This event was followed by a dinner for the entire chapter. During the year we have taken several musical programs to our local nursing home to entertain the patients. Our year's activities will be concluded with initiation ceremonies for our new pledges in the late spring.—RUTH PARTLO, *Historian*.

PHI ZETA CHAPTER has been very busy these past few months. During pledging the chapter voted to change Hell Week to Help Week. The pledges held bake sales, cleaned our room and generally helped the collegiates; and every day they were responsible for knowing the dates of an assigned composer, some of



his works and be able to hum themes from a few of these works. We found that this method of activating the pledges helped the chapter to become more strongly unified, with everyone working for one goal—the building of a stronger chapter. We are proud to tell you that we are helping the alumnae group by providing the music for all of their monthly meetings. This spring the conservatory is presenting the Brahms *Requiem* and Phi Zeta is participating one-hundred percent. Those who aren't singing will be playing with the Sioux City Symphony who will be accompanying.—JULIA KEYS, *Historian*.

DES MOINES ALUMNAE held their first meeting of the year in September at which time Myrtle Stewart gave a book review. In October a new member of our group, Betty Ogg, sang a lovely group of selections, accompanied by our president, Delores McDonald. Betty is on the faculty of Grandview College in Des Moines. Our American Music program was held in November. Harriet Moore, music delegate to convention in June, sang selections by Griffes, Barber, Menotti, and Edwin MacArthur. Delores McDonald, her accompanist, played a sonata by Ray Green. We always begin the year in January with our combined meeting of patronesses and Omega chapter. Omega members presented the program which was very fine and ended with special work by their chorus. The good attendance made this combined meeting enjoyable and worthwhile.—GENEVA CARMAN, *Historian*.

RICHFIELD ALUMNAE CHAPTER: On Tuesday evening, March 3, the Richfield Alumnae Chapter met for a business and program meeting at the home of Aldys Nelson. Ruth Heinen, organist, presented the program. Marjorie Christensen will be very busy in March and April as the accompanist for Carl Palangi, bass-baritone soloist, being presented in concert by the Civic Music Association. Concerts will be given in Ashland, Eau Claire, and Marshfield, Wisconsin, and in Wadena, Minnesota. Marjorie has also worked with artists Betty Allen, mezzo-soprano, Maurice Wilk violinist, Frank Miller, 'cellist, and Maria

Montana soprano. Ruth Upstad, youth choir director at Central Lutheran Church, presented her children's group as the demonstration choir at the Augsburg Publishing House Music Clinic.—CLARA E. ANDERSON, *Historian*.

## SOUTH CENTRAL

XI CHAPTER held a work party Sunday, February 22, at which time sixteen new girls were pledged. They are Jean Ayers, Lita Bach, Lynne Coberly, Delores Dummermuth, Susan Eggleston, Cynthia Fite, Pepper Garrison, Jan Krehbiel, Karen McKinsey, Lorinda Neville, Mary Elda Scarth, Miriam Schwartzkopf, Betty Shoemaker, Sharon Tebbenkamp, Carolyn Throop and Janet Woody. After the pledging ceremony, the members attended a formal business meeting and installation of the following new officers: Marianne Marshall, president; Patricia Duerksen, vice-president; Carolyn Bradley, recording secretary; Diane Hoisington, corresponding secretary; Sandra Harding, treasurer; Jane Carr, rush chairman; Judy Gorton, alumnae secretary; Loretta Johnson, historian; Carol Riedmiller, chaplain; Barbara Wendel, warden; Lavena Brown, chorister. Both actives and pledges then enjoyed a time of refreshments and visiting. The entire day's events were attended by the district director, Meta Ann Knecht. Xi has had a busy year so far, one of its main events being the district conference which it hosted in November. An important chapter project was the sending of forty pounds of music to Japan. An event of the future is the performance of Handel's *Ode to Saint Cecilia* for chorus and orchestra, to be presented with the two other music groups on the campus.—JANETH AUER.

MU KAPPA chapter began its activities with its annual fall reception for faculty and new women students in the music school. Nancy Holland, Linda Jolly and Chlorica Stephens Warkentin presented a musical program for the event. Our Founders Day luncheon was held in Oklahoma City this year, with alumnae from Tulsa and Oklahoma City. As a highlight of the program, Carol Christenberry related to us some exciting experi-

ences she had while working with the Kansas City Starlight Theater last summer. Others on the program were Frances Worrell and Merrily Adams. Mu Phi served as hostesses for a reception at the annual NATS Convention here on the O. U. campus. Our money making project, ticket sales for the Oklahoma City Symphony season and the Great Artist Series, was well received. Five Mu Kappas attended District Conference in Lawrence, Kansas, last fall. They were Frances Worrell, Bonnie Harrell, Janice Hunter, Nancy Stagg, and Carol Christenberry. Elizabeth Parham, our former faculty advisor, had a lovely Christmas party for us in her home. On March 22, we are joining the SAI's and Phi Mu Alpha's in an annual scholarship concert. Piano soloists in "Le Carnaval Des Animaux" will be Chlorica Stephens Warkentin and Nancy Stagg. The rest of the program will consist of a group of madrigals and selections from *The Student Prince*. Mortar Board elected Rhett Reynolds one of ten outstanding freshmen women. Linda Jolly was soprano soloist in the Haydn Concert, given by the O. U. Symphony Orchestra and Chorus. She will also sing the leading role of "Lauretta" in the opera, *Gianni Schicchi*. Nancy Holland will sing the role of "La Vecchia" in the same opera, and she was soloist in the Christmas Concert given by O. U. choral groups. Carol Christenberry was soloist in the Spring Symphony Orchestra concert, and will sing the leading role of "Maurya" in the opera, *Riders to the Sea*. She recently won first place in the voice division of the OMTA All-State Young Artists contest. Peggy Hancock won first place in the piano division, and will represent O. U. at the State Convention of the Federated Clubs at Shawnee April 6.—NANCY STAGG, *Historian*.

MU RHO: Early in October Mu Rho Chapter were hosts for Sunday afternoon tea at the home of Alice Robertson, honoring all new women music students at the University of Denver. A short program was provided by Ruth Allen, pianist; Shirley Rider, soprano; and Jean Hart, accordionist. Several of our members performed for the Music Teacher's Association this past fall. Participating

were Dorothy Nazareus, accordionist; Shirley Rider, soprano; Sharon Holdaway, soprano; Ruth Allen, pianist, and Yvonne Clark, baritone horn. This same program was given in recital on campus for the music students and faculty. Jean Hart, accordionist and Alice Robertson, soprano, represented our chapter in a short program for the November meeting of the Denver Alumnae Chapter. Our Chapter was honored with a lovely Christmas Party by the Patroness Club at the home of Mrs. A. Hiner, Jr. The University of Denver A Capella Choir under the direction of Daniel Moe journeyed to Southern, Eastern and Western parts of Colorado in concert tour this winter. Those of our Chapter who happily by-passed a week's studies to participate were Joyce James, Sharon Holdaway, Carol McClaughlin, Shirley Rider, Jan Cumbie and Neill Keller. The Choir is scheduled early in March to present Mr. Moe's composition "The 150th Psalm" in concert with the Denver Symphony Orchestra. Shirley Rider will sing the part of "Adele" when Opera Workshop presents this Spring's production of *Die Fledermaus*.

On the agenda for Spring is the Spring Musicales which is to be a product of the combined efforts of Collegiate and Alumnae Chapters and the Patroness Club, featuring solo performers from each group. Despite near blizzard conditions we had a good turn-out for a Rush Party at the home of Mrs. R. D. Fee, wife of the director of the School of Music and a member of our Patroness Club. As a result of the Rush Party, we are proud to include in our Chapter our three new pledges, Marilyn Manassee, Pat Campbell and Jan Cumbie and look forward to their contributions of music and friendship.—ALICE ROBERTSON.

PHI XI CHAPTER held an initiation service on December 9, 1958, for nine new pledges: Judy Stewart, Jerry Carter, Ruth Glaspey, Martha Wofford, Sylvia Edwards, Gail Bennett, Martha Varnell, Beverly Bush, and Jo Ann Godec. On December 14, a musical Christmas program was presented at the Waco State Home and at the Children's Hospital in Waco. Later in the month an affiliation ceremony was held for Mary Guemple



who has come to our chapter from Phi Phi Chapter at the University of Kansas City. Plans are now being completed for our American Music Program which will be presented on April 23, 1959. On February 14, a work party was held for the purpose of presenting training for the new officers, having a formal business meeting, and enjoying a musical program. New Officers installed are as follows: Ann Owens, President; Gloria Young, Vice President; Martha Wofford, recording secretary; George Ann Beaver, corresponding secretary; Beverly Bush, alumnae secretary; Jo Ann Godec, treasurer; Carolyn Bowline, historian; Ruth Glaspay, warden; Gail Bennet, chorister; and Sylvia Edwards, chaplain.—CAROLINE BOWLINE.

PHI EPSILON'S first service activity this year was to serve refreshments at an all-school reception and dance at the end of Orientation Week. At Homecoming the Mu Phis were responsible for planning the ceremonies presenting the queen and her attendants at half-time. In November we gave a rush party at the home of one of our patronesses, and our entire chapter attended the district conference in Lawrence. Early in the second semester we welcomed Meta Ann Knecht, our district director, who was here for the installation of our new officers and our work party; we had fun with rounds and madrigals afterwards. In March we presented a program of American music in convocation, part of which we later took to the two local hospitals. For the third successive year, our Mu Phi-Phi Mu chorus furnished music for the Good Friday church service of the combined local churches. We finally got our music for the Philippines mended, packed, and sent. Our money-making projects were a dime dance after a football game and our annual Stunt Night. Three of our members presented senior recitals during the second semester, two gave junior recitals, and four have been playing in the newly organized civic orchestra.—MARIETTE SIMPSON, *Historian*.

PHI PI CHAPTER is continuing a tradition begun last year—that of a "Greek Sing" in collaboration with Phi Mu Alpha. In

the second semester of last year we had nine pledges who gave a recital on April 15 and were initiated April 29. Three members of our chapter were tapped for Mortarboard: Sue Newsome, Mary Lee Scott and Colleen Round. First semester of this year we started off with a "Come as You Are Breakfast" for prospective pledges. We pledged eighteen in October. Founders Day was observed on campus with members from Friends University and alumnae attending. On Nov. 18, pledges gave their recital, being initiated on Nov. 25. Our American Music recital was given in December.—JANICE HUPP, *Historian*.

PHI TAU CHAPTER at North Texas State College presented its annual Christmas Vespers on December 15, with Phi Mu Alpha and Sigma Alpha Iota. This year in addition to the traditional Christmas carols, Mu Phi and SAI presented Benjamin Britten's *Ceremony of Carols*. Kristin Webb, a member of Phi Tau directed the work. After the concert, the three groups went caroling around the campus. Then the group attended a reception at the home of Dr. and Mrs. Kenneth Cuthbert, new Dean of the Music School. Kristin Webb, flutist, gave a junior recital on February 2. It was given jointly with a member of Phi Mu Alpha, Don Wilkins, clarinetist.

A work party was held on February 7 with our district director, Mrs. Roxelyn Rhymer. At this meeting the new officers for this year were installed. Our informal rush party had a Greek theme. Members and rushees wore Greek costumes and decorations included Greek columns and lyres made from cardboard and a mural of ancient figures on the wall. Invitations were written in the form of scrolls and favors were a MΦ oracle for each rushee. The formal coffee was held in the same week. Jane Shands and Kristin Webb performed the "Aria" with flute obligato from Bach's *St. Matthew Passion*. Lynn Hutter played the Brahms "Rhapsody in E-flat." Kristin also performed a solo. Several of the alumnae members and patrons attended the coffee. As a result of a very successful rush season, we now have ten new pledges. They are: Anna Henny, Carolyn Petering, Virginia Rice, Fern

Greenhaw, Barbara Schooling, Beverly Ward, Linda Duck, Johnnie Cardinale, Angelica Garris and Sue Shoemaker. Sue Erdmann, a member of Phi Tau, is currently starring in "The Boyfriend," a stage production in its fourth week in Dallas. Phi Tau is to have an exchange program with the Ft. Worth Alumnae chapter on March 9 at the Fort Worth Conservatory of Music. Members of our chapter and members of their chapter will perform.—MADGE WATERSTON, *Historian*.

EPSILON EPSILON chapter is especially proud of two of its members, Sarita Gattis and Leta Thomason. Sarita was elected president of the Texas Association of German Students and Leta is listed in *Who's Who in American Colleges*. Again this year we celebrated Founders Day in conjunction with the alums. For our share of the program Betty Foy played a piano selection and Carol Calmus sang some songs by modern composers.

One of the highpoints of any semester is pledging and initiating of new members. We initiated two this fall: Linda Jeanne Craugh and Lorraine Forman. Another of the things we especially enjoyed was singing Christmas carols for some of the patients at the U. S. Public Health Hospital. We also continued our annual custom of placing a Christmas tree in the lobby of the Fine Arts Building in cooperation with Phi Mu Alpha. This year we began donating books for a special MΦE shelf in our Fine Arts library.—BRENDA BLACK, *Historian*.

EPSILON MU Chapter began its season with a Kathleen Hart Foster Memorial Concert presented on October 28, 1958, in memory of the highly esteemed Mu Phi, teacher and friend. One of the highlights of the year was our annual American Music Concert performed on February 15, 1959. The concert included two double-piano duets by Deon Eldredge and Janet Sprouse, several vocal soloists, Maxine Miner and Lindsay Pearce. Lindsay Pearce has recently returned from studying at Juilliard School of Music. The program also included a

string quartet written by a student of the University of Utah, Robb Russon, and performed by Mu Phi Carolyn Young, Katherine Grundmann, Joyce Lowry and Carol Manwaring, two piano solos by Kay Hicks and Gail Froerer and a flute solo by Myrna Brown. The program was concluded with a chorus consisting of most of the members in the chapter. During the past year Epsilon Mu Chapter received a certificate of Honorable Mention, and won the Collegiate Chapter Service Award. Myrna Brown was elected to Phi Beta Kappa, a National Scholastic Honor Society. In the May 19, 1958 Hall of Fame, Sherie Howell won several honors. Sherie was also honored in the U. of U. paper in the "This Week We Honor" column. She was also commencement speaker this last year, the first student speaker in the history of the University. Kay Hicks was elected Student Education Queen for 1958. Two members who participated in the newly organized Opera Workshop were Judith Baur and Maxine Miner. Maxine Miner also performed five original songs to harp, oboe, and clarinet accompaniment. The songs were written by Jay Welch, with words from Robert Browning's "Pippa Passes." A stereo tape and score were sent to the Robert Browning Memorial Institute. Valerie Jackman was elected Education Affairs Vice-chairman of the Utah State National Students Association. Mortar Board members chosen included Mu Phis, Su Bennett and Maureen Derrick. Traveling with the L. D. S. Tabernacle Choir were Valerie Jackman and Judith Baur.—KATHERINE GRUNDMANN, *Historian*.

EPSILON PI CHAPTER, Texas Technological College, Lubbock, Texas, began the Spring semester with a dinner honoring our district director, Roxelyn Robbins Reimer. Following the dinner, the new officers for 1959-1960 were installed. After the installation, a musical program was presented. First on the program was a solo, "Plague of Love" by Arne, sung by Mary Pfingsten. Next was a piano duo of *Brahms's Variations on a Theme by Haydn* played by Yvonne Skinner and Kathleen Lamar, and then Dorothy Pijan sang an aria from the Vaughn Williams opera, *Riders to the Sea*. On February





Members of Epsilon Pi rehearsing the kneeling scene in "Riders to the Sea."

20, we had a rush party based around a George Washington's birthday theme. Also keeping us occupied this semester are the rehearsals for an opera; we are doing the chorus parts for *Riders to the Sea* by Vaughn Williams. This is being done in coöperation with the Tech Opera Theatre and the Tech Orchestra. Also, two of our members have leading roles. Dorothy Pijan sings the part of Maurya and Karen Frack sings the part of Nora. These rehearsals have been lots of fun even though the music is difficult and we are all looking forward to the performance. Thursday night, February 27, we held a pledging ceremony for our new pledges in the Music Building. Our new pledges are Pat Buckley, Diana Blake, Linda Beene, Dee Dorset, Jane Ann Henry, Judy Harper, and Nancy Russell. We were saddened by the death of one of the most beloved of our faculty members, Mrs. Myrtle Dunn Short. In honor of Mrs. Short, our chapter along with Zeta Sigma chapter of Phi Mu Alpha, has established a scholarship for a deserving music student here at Tech. We have already contributed \$25.00 to the scholarship and we are planning some money making projects to raise some more money for it. We are planning to hold a dance for the music students and charge admission with the proceeds go-

ing to the scholarship fund.—KAREN FRACK, *Historian*.

EPSILON PHI chapter at Friends University opened its 1958 spring semester with election of officers and a surprise rush breakfast for prospective pledges. The initiation service in May was followed by a formal banquet. Hayrides and coke parties were given for music majors and minors. Members of MΦE with the Phi Mus gave an American music recital in April. A program for the student body was given in October. Other chapter musical events included senior recitals by Dorothy Sandquist, pianist; Erma Jean Dunn, organist; and Cleo Wilson, organist. Charmaine Ioerger, soprano, and Vivian Fleming, contralto, were featured as soloists in the 1958 presentation of Bach's *Christmas Oratorio*. Winner of the 1958-59 scholarship presented by the Wichita Alumnae was Cleo Wilson, president of Epsilon Phi. Profitable and interesting money-making schemes this year included recording singing commercials for a local chain of stores and caroling at the stores during the Christmas season. Top recognition was given last spring to one of our members, Eddie Handkins, when she was crowned 1958 May Queen. Several of our chapters, as members of "The Singing Quakers" participated in the production of *Madam Butterfly* by Puccini given by the Wichita Symphony in February. Small solo parts were taken by Charmaine Ioerger and Joan Lisenby. Service on the campus this year included providing ushers for all musical events and sponsoring a reception following the Bach *Christmas Oratorio*.—MARY EMILY PERISHO, *Historian*.

DALLAS ALUMNAE CHAPTER opened the fall meeting at the home of Ruth Vick. Anna Woodruff gave an interesting and informative report of the convention held in Detroit. President Patricia Crenshaw outlined the programs for the year which included Founders Day at Fincher's Parlors in the School of Business at Southern Methodist University, with Mu Chi Chapter and the alumnae giving a joint program. Also in Fincher's Parlors the Open Musicale with Sigma Alpha Iota was given February 10. The program was

a string quartet composed of Katherine Riddle, Dundee Dillard—Mu Chis and Ruth Burton and Louise Mueller—Sigma Alpha Iotas. Also Julia Hermann—S.A.I. played a group of numbers on her harp. Ruth Rankin Rutherford (Mu Chi) closed the program with piano selections. The meeting in April will be held with the Fort Worth Alumnae Chapter in Fort Worth. The program of MΦE compositions will be in May. The Museum Recitals under the direction of Tennie Lengel and Doris Allbright have been held each Sunday afternoon at four o'clock at the Dallas Museum of Fine Arts. This series runs from October 26 to May 31st. We feel this is a definite contribution to the musical culture of Dallas. Our chapter was saddened at the sudden death of our beloved member 'Lisbeth Todd, charter member of Mu Chi and former instructor of piano at S.M.U.—VALERIE GOULD FOSCUE, *Historian*.

DENVER ALUMNAE CHAPTER: Hazeltine Larson, Alumnae President, took an enforced leave-of-absence due to a serious illness. We all look forward to her return to health and our chapter soon. Jeanne Kostelic performed as guest soloist with the Missoula Civic Symphony Orchestra on March 1. Her program included "Alleluia" from Mozart's Motet, *Exsultate Jubilate*; "Mi chiamano Mimi" from *La Boheme* by Puccini; "Ah, fors 'e lui" from Verdi's *La Traviata*, and a group of numbers from Broadway shows. Virginia Rigg, Dorothea Seeman, and Corinne Japhet attended the national convention of the Music Teachers National Association held in Kansas City, Missouri, in February. While there, they were guests at a lovely luncheon given by the members of the Kansas City Alumnae Chapter. Beverly Christiansen, the soprano soloist in Denver's Christmas performance of Handel's *The Messiah*, received second place in the regional Metropolitan Auditions singing Puccini's "Vissi d'Arte." Sunny Van Eaton received an honorable mention with an aria from Boito's *Mefistofele*. The judges included Richard Crooks, Robert Bromley and the local committee headed by Mrs. Herbert Witherspoon, a member of the Denver Patroness Club.—GRETA LEA FERRIS JOHNSON, *Historian*.

FORT WORTH ALUMNAE elected the following new officers at the February meeting: President, Lillian Eley; Vice President, Vera Linder; Recording Secretary, Mary Nita Werner; Corresponding Secretary, Louise Bohannon; Historian, Sue Corder; Chaplain, Helen Keith; Warden, Connie Quiet; Chorister, Loretta Montgomery. The speaker for the evening was Mrs. L. R. Elliot, wife of the retired head librarian at Southwestern Baptist Theological Seminary, who discussed the life of Albert Sweitzer. Recently we have set up a Scholarship Fund for Phi Tau at North Texas State College in Denton. Our plans for the spring include the District Conference on March 7, a meeting with Phi Tau in March, a meeting with the Dallas Alumnae Chapter in April, and a May Banquet.—SUE CORDER, *Historian*.

OKLAHOMA CITY ALUMNAE members are doing important work in the community. Ruby Payte is continuing her outstanding work in music therapy at Central State Hospital. Mu Phis Anna Grossman, violist, Catherine Paulu, oboeist, are heard with the Oklahoma City Symphony orchestra; Janet Abel this year is leader of Oklahoma City Ladies Music Club Choral Group. Wilda Griffin, vocal teacher at Oklahoma U, is on a year's leave and is spending it in Europe. Our annual meeting with SAI is always a pleasure. This year a fine part of the program was given by our MΦE Scholarship student from the collegiate chapter.—ELIZABETH LINDQUIST, *Historian*.

TULSA ALUMNAE CHAPTER started the season with National Convention Reflections by our president, Frances Hassler. This report was very interesting and informative. Charlotte Krumpeln, violinist, and student at the University of Tulsa, received the Helen Ringo Achievement Award. Charlotte will favor us with a recital in April. In November we had our annual rummage sale and cleared approximately one hundred dollars. Dorothy Tate ably represented us as a business delegate, and Elsie Starr was our music delegate to the District Conference which was held in Lawrence, Kansas. A concert of two piano selections by Sister M. Regina and Frances Hassler, was very well received at the Monte Casino meet-



ing in January. Our February program was very unique, consisting of selections by pupils of Mu Phi Epsilon teacher-members. The first program of this kind was so well received last year that we decided to make it an annual affair. Joan Carlson delighted the group in March with a music appreciation lecture illustrated with high-fidelity recordings. Elizabeth Ruffin and Arleta Monahan were hostesses to our hilarious spring party for husbands. After a sumptuous dinner we were treated to some vocal duets from operas by Harriet and Gilbert Chancey, who are members of the Tulsa Opera Club.—JOSEPHINE QUINN-MILLER, *Historian*.

## PACIFIC NORTHWEST

MU CHAPTER at the U of Oregon has had a busy year. Last May, Sharon McCabe gave her senior violin recital after which the Mu Phi's honored their past president with a reception. May 28 was the informal rush party at Mrs. Edblom's home. Later that season, five girls, Patricia Miles, Nina Sackett, Susan Mimura, Eleanor Dixon, and Rosalie Basset, became members. This summer Sue Helfrecht was our delegate to National Convention. Fall term saw the return of Anne Morris who had spent the previous year in Europe. We were all glad to have her back. Following the initiation of Donna Baker and Roberta Clemmens on November 11, we attended the Founders Day banquet held in the dining room of the Lutheran Church. Mr. Jerome Jelinek, cello instructor at U. of Oregon, was the guest speaker, and entertainment was provided by MΦE alums. Also present were the Eugene Patronesses. The home of Mrs. Charles Teague was the scene of the winter term informal rush party. Eleven of the fifteen present pledged Mu Phi, including Sharon Anderson, Doree Taylor, Roberta Horning, Helen Brown, Ruth Hancock, Judy Davis, Sabine Phelps, Sona de Toit, Karen Kincaide, Marianne Woodson, and Margaret McDonald. One of our pledges, Sona de Toit, is from South Africa. On January 26, three Mu Phis entertained at the Patroness' installation. They included Lolita Watson Phelps, violinist, Mira

Frohnmayr, vocalist, and Eleanor Dixon, pianist. Eleanor also accompanied Mira and Nina Sackett accompanied Lolita. Installation of officers was held February 24, with Pearl Peterson, our District Director, as our special guest. This year at the annual Music Educators Conference held at the U. of O., Mu Phi had a booth at which were sold coffee, doughnuts, and candy bars. This proved most successful and has added to our treasury somewhat. Once a month, members of Mu Phi prepare and give a program at the children's hospital in Eugene as part of our service project. Other services include ushering at symphony concerts, recitals, etc. Mr. John Hopkins, professor of piano, has come to us as our new faculty advisor, replacing Mr. Milton Dieterich. We welcome Mr. Hopkins and appreciate his interest in MΦE. Many Mu Phis have participated in the Morning Musicales. At our winter musicale, Dr. Edmund Cyckler spoke about his recent trip to Europe and directed the participants in presenting representative folk songs of some of the European countries. Mu Phis who have appeared in student recitals this year include: Eleanor Dixon and Nina Sackett, pianists; Mira Frohnmayr, Sabine Phelps, Roberta Clemmens, and Doree Taylor, vocalists; and Laura Spray at the organ. Laura also had some of her original compositions presented this year.

MU BETA CHAPTER: The pledges, Beverly Kirkwood, Jeannette Stein, Joan Williamson, Sharon Konicek, Marilyn Murison, Ann Brasil, Nancy Pierson and Sandra Gillette, were initiated January 21. Afterwards, everyone went to the home of Dr. Stout, the head of the Music Department, and listened to his player piano and were served refreshments. February 21, our District Director attended our work party and checked through the records and observed the initiation of the new officers. They are: President—Jeannette Stein, Vice President—Georgine Steigner, Recording Secretary—Sandra Gillette, Corresponding Secretary—Sandra Gillette, Treasurer—Joan Williamson, Historian—Marilyn Murison, Warden—Nancy Pierson, Chaplain—Beverly Kirkwood, Chorister—Rosalie Taylor. Also on February 21, Ros-

alie Taylor and Ann Brasel sang for a convention dinner at the Compton Union Building. The Silver Tea, held at Scott Hall February 28, at 2:30, was a great success. The money donated provides for a scholarship fund for outstanding freshman women music majors. Those who performed were: Marilyn Murison and Ann Brasel—vocal solos; Sandra Gillette—violinist; Jeannette Stein—oboeist; Beverly Kirkwood—pianist; Linda Mathewson—bass clarinet. Refreshments were served after the program.—MARILYN MURISON, *Historian*.

MU ZETA CHAPTER is proud of its members. Three of our seniors, Mary Ellen Gowing, Anna Petrashek, and Joan Armstrong are members of Mortar Board. Joan Armstrong was selected this year for *Who's Who Among Students in American Colleges and Universities*. Anna Petrashek was tapped for Phi Beta Kappa in her junior year. All of the Mu Zeta members are teaching piano lessons through the College Conservatory of Music. MΦE gives a reception for the recitals that the students of the Mu Phi teachers present. Six Mu Phis are members of the Whitman College Choir—Ardeth Barnfield, new president of the chapter, Mary Ellen Gowing, Marian Bailey, Pat Keeney, Evelyn Bubnar Haggard and Joan Armstrong. Four of our members are members of the Walla Walla Symphony Orchestra: Anna Petrashek, first chair flute; Joan Armstrong, first chair bassoon; and Mary Ellen Gowing, percussion. Mrs. Beulah Long, our advisor and member of the Whitman Conservatory of Music faculty, is concert mistress of the Walla Walla Symphony.

We have been helping in a city-wide campaign to have more classical and semi-classical music on our two local radio stations. We are planning an entire American Music Concert for our annual spring silver tea. The proceeds from this goes to a \$75 scholarship we give each year to a deserving music student here on campus. We recently enjoyed the visit of our District Mu Phi Director, Dorothy Murray and almost the entire Chapter is planning to attend the District Conference in Spokane, on March 7. We continue in our responsibility of providing a reception following all the re-

citals held in the Conservatory.—JOAN ARMSTRONG.

EPSILON DELTA had a busy winter, beginning with the annual Lewis & Clark College Winter Concert in December. Participating were: Carol Fogdall, Carol Jean Short, Donna Long, Elizabeth Barker, Carol Hussong, Dorene Horn, Janice Bjerke, Dorothy Wymore, Linda Bruno, Diane Carlson, and Sue Fiscus. Installation of Spring officers was held January 27th, with Mary Hetzel of Anacortes, Washington, installed as President. The work party, February 10th, was directed by Pearl Peterson. Also in February the Chapter initiated the following new members: Janice Bjerke, Carol Fogdall, Frances Cook and Alice Siegfried, following which all members enjoyed dinner at the Anchorage restaurant. Dorothy Wymore, presented her Senior voice recital on March 1, accompanied by Alice Siegfried. She is a student of Josephine Spaulding. Closing our calendar of events was the initiation of the following 11 pledges: Mary Bovey, Mary Ellis, Virginia Derickson, Margaret Hetzel, Marilyn Poole, Rosemary Douglas, Myung Soon Woo, Winnie Espina, Donna Wick, Patricia Miller, and Donna Russell.—DOROTHY WYMORE, *Historian*.

EPSILON IOTA CHAPTER highlighted spring quarter of 1958 with an American Music Concert in which all members and pledges took part. The chapter initiated two pledges during this quarter. At the annual Awards Con Neena Bussard was named the outstanding choir member for the year. We are very proud of Neena. Several of our members were married this summer. Neena Bussard became Neena Bussard Miller, Deanna Davis became Deanna Davis Hamilton, and Marritta Bundy became Marritta Bundy Davis. On November 9, 1958, we gave a successful Rush Party for interested girls. We ended the year by helping put on a Christmas Pageant with Phi Mu Alpha, (Sinfonia) E. W.C. Band, Collegiate Chorale and the Sinfonietta.—KATHLEEN WAMSLEY, *Historian*.

EPSILON RHO at Montana State University highlighted their Fall Quarter of 1958 with their annual Music School Christmas Party. A Christmas tree was



placed in the Music School lobby, with the ornaments for it being furnished by the music students and faculty as their admission to the party. Most of these are homemade and give the tree a personal character. The actual party consisted of entertainment, furnished by the students and faculty, in a very light style, gifts with a special significance for each faculty member given out by Santa Claus (Dean of the Music School), refreshments, and dancing. The project Epsilon Rho tackled for Winter Quarter, 1959, to help us financially is that of selling coffee and cookies each Monday afternoon following our weekly Student Recital. Both faculty and students respond eagerly to this. Epsilon Rho has new officers as of February 15, their installation being special in that it was combined with a work party for old and new officers which was attended by Dorothy Murray, District No. 15 Director, from Spokane, Washington. Following the installation, Florence Reynolds, Epsilon Rho's advisor, gave a thirty minute cello concert which was followed by refreshments and a friendship hour. Alumnae from the local community were invited to join us during this special occasion. Many honors have been achieved by chapter members. Three senior recitals have been given to date: a piano recital by Rulee Matsuoka, a duo-piano recital by Frances Carden and a Sinfonia member, and a recital by Donna Kerber, mezzo-soprano. A Faculty Recital was given by our advisor, Florence Reynolds, cellist. Ursula Davis and Willie Ambrose had the lead in the presentation of the "Marriage of Figaro" by Mozart. These two girls plus Pat Robinson and Jean Schlicht are members of "Jubileers," a select singing group of twenty voices who provide entertainment for schools and clubs throughout the state and always go on tour during Spring Vacation. Chamber Band, a select band of forty players from the Symphonic Band claims our Rulee Matsuoka, Marie Vance, and Linda Copley. On the Fall Quarter Honor Roll were the following MΦE members: Coleen Hilden, Ursula Davis, Rulee Matsuoka, Linda Copley, Karen DuVall, Marie Vance, Donna Kerber, Betty Stephenson, Betty Jumper, Miriam Leib Patterson, Carol and Lorraine Peterson. —LINDA COPLEY, *Historian*.

EPSILON SIGMA CHAPTER has had a full and interesting year. Last spring we initiated five new members: Audrey Betts, Ruth Berhow, Gaye Hughes, Gwen Thomas and Barbara Olsen. During June, our president, Mardell Soiland, attended the national convention in Detroit. In September we were invited to a chili feed at the home of Audrey Betts, and later the same month we held our annual rush party, "Autumn Nocturne." October found us making and selling doughnuts on campus and enjoying a spaghetti dinner with Janet Emilson, our former vice-president. November 12 was the date of our Founders Day banquet with the Tacoma Alumnae Chapter. On February 7 we presented our annual concert. Those participating were: Ruth Berhow, Audrey Betts, Sandra Schierman, Gwen Thomas, Sheila Knutson, Mary Lou Engen, Peg Byington and Sylvia Fylling. February 11 Sheila Knutson and Margaret Evanson joined our chapter. At present we are preparing for the district conference to be held on our campus in April.—SANDRA LUCAS OLSON, *Historian*.

THE EUGENE ALUMNAE CHAPTER started their meetings for the 1958-1959 Season in September with a meeting in the home of Olive Green. Our president, Ruth Nerbas, gave such an interesting account of the Convention last summer that we all wished we had been there, too. Founders Day was celebrated with a joint banquet, together with Nu Chapter members and the Patronesses. Featured speaker was Jerome Jetinek of the University faculty. Members of both collegiate and Alumnae chapters presented the program. Selections from *Carmen* were given by Mrs. G. George French in costume accompanied by Mrs. Robert Wilson. Concerto for flute and harp (Mozart) Alex Hibbard, Mrs. Windsor Calkins and Sue Helfrecht. *Trio No. 7* (Mozart), by Lolita Watson, Audrey Irvin, Eleanor Dixon. The Theme of our Morning Musicales is "Musical Travelogues." France was first, followed by "A Visit with Bach." Commentators were two members of the University faculty, Max Risinger and George Boughton. The comments about Johann Sebastian Bach

were augmented by musical programs of his works.

Following the Theme the second concert-lecture was entitled "A Musical Tour of Central Europe" with Dr. Edmund A. Cykler of the University faculty as the lecturer. This featured folk songs of Germany and Austria by Mrs. Bruce Kitts, Mrs. Keith McMilan and Mrs. Milton Dieterich in costume as the first group. The second group comprised a visit to the schools with musical illustrations and third group was church music, including works of Bach, Disstler, Praetorius and Mozart. A small group of our members comprised the Choral. The last Musical will be held March 5 on France. We had a lovely Christmas party at the home of Mrs. Lester Edbloom with a swim party in an indoor swimming pool first.—DELIA D. SIGWART, *Historian*.

PORTLAND ALUMNAE: Headgear depicting song titles was worn by those attending the Christmas Mu Phi alumnae meeting which was held at the studio-home of Jean Williams and Nellie Tholen. Lovely music was given by duopianists Margaret Boswell Gabriel and Beulah Gore Musben. In January we met at the home of Anna Marie Blinkenstaff where we enjoyed vocal and piano selections by Margaret Rugh Wiltse and Marjorie Heermans Hangerud. The first hour of our February meeting was held by candle and flash light, when the dark stormy night caused an electrical "outage" shortly after we arrived at the home of Jean Sturm. Serena Rubin gave a most interesting résumé of the facilities and services available at our public library where she is music librarian. The following officers were unanimously elected. We are trying an afternoon meeting in March to accommodate those who prefer daytime to evening meetings. It will be at the home of June Coad who will present a program of American Organ music on her own organ. Our patronesses are special guests. We are deep in plans for our spring scholarship concert to be given April 13th. Adell Hanson, violinist and last year's scholarship winner and David Johnson, bass-baritone will be guest artists. Our own Lillian Pettibone, pianist, completes the

list of performing artists. Adell Hanson has just won a Tanglewood Scholarship entitling her to six weeks of advanced study at the Berkshire Music Center maintained by the Boston Symphony at Lenox, Mass. Since Oregon is celebrating its centennial this summer, beads, cotton and crinoline are the rage and the centennial will be the theme of our reception following our concert. Belva-June Mayor will be in charge. We welcome any Mu Phi who may come West to help us Oregonians celebrate the Centennial.—KATHLEEN EUSTACE THOMAS, *Historian*.

SEATTLE ALUMNAE CHAPTER'S November meeting was held at the home of Beulah Silvain. Carol Jean Babbitt Brown, violinist, and Beatrice Kauffman Higman, pianist, played DeBussy's *Sonata* and De Falla's "Danse Espanol." Also we read five SSA songs by MΦE composers, including one by our own Amy Worth. This was led by Harriet Charlton. We met in January at the home of Jeanne Martinelli Hansen, and the music was performed by Jane MacGowan, violinist, accompanied by Beatrice Higman at the piano. They played Beethoven's "Romance in G," and Turina's *Sonata No. 2*. In addition, Mildred Hunt Harris, composer and teacher, gave a most interesting talk on "Composition Techniques for Young Children with Illustrations." We are proud to have affiliated these girls: Roberta Stanley Diesner, Jeanne Martinelli Hansen, Barbara James, Ann Nilsson Kluksdahl, Takiko Miyauchi, all from Tau chapter, Juaneta Read Caldwell from Kappa, Gweneith B. Schweppe from Mu Beta, and Carol Jean Babbitt Brown from Mu Zeta. We are proud of Harriett Westling Shank, cellist, who performed with the Bremerton Symphony in January. She played *Concerto in A Minor* for Violoncello and Orchestra by Saint-Saens. Eva Heinitz, member of the U. of Washington music faculty and well-known as a cellist and performer on the viola da gamba, was soloist when the Seattle Little Orchestra began its season of four concerts in January. Eva was presented in a faculty recital at Meany Hall on the campus in November and played works of Vivaldi, Beethoven, Kodaly, Bach, Dvorak, Schubert-Cassado



and Senaille. The Northwest Music Educators Conference met at the Olympic Hotel on March 7 with Clemwell MacKenzie in charge. The second of our Artist-Program Series was presented February 6 in the Music Building of the University of Washington. Featured were our scholarship winners of 1958, Anita Hornstein, pianist, Emilie Berendsen, contralto, and Marilyn Gordon, clarinetist, as well as Shirley Weaver, violinist, and Henrietta Mastenbrook, pianist. 1959 scholarship tryouts were held at our February meeting and we are pleased to announce that Katherine Murray, pianist, was the winner of the Frances Dickey Memorial Scholarship.—JANET POHLMAN SAWYERS, *Historian*.

TACOMA ALUMNAE CHAPTER began a series of very interesting meetings in September with a report of the National convention by its president, Bette Margelli. In October, Margaret Myles who sings in the quartet at the Beth Israel Temple, presented them in recital and gave informative commentary about the Jewish service and Holy days. In November, Founders Day was observed with Epsilon Sigma Chapter of Pacific Lutheran College with a dinner meeting at Wellmans. Epsilon Sigma presented the musical portion of the program. Among the performers was Betty Meseus, pianist, our scholarship winner for this year. Bette Margelli, Persis Shook and Dorothy Patterson presented the Founders Day ritual. The speaker of the evening was Dr. Margaretta Walker, former national President. Margaretta has affiliated with our chapter since joining the staff of the College of Puget Sound as Dean of Students. In December, we gathered at the Mason Methodist church for an organ recital by Bette Margelli. The Madrigal Singers from Stadium High School offered several numbers. In January, Marie Fortier, who teaches music at Hudtloff Junior High, opened her home to us and also presented the program of the evening. She discussed the problems and procedures of teaching junior high music and also demonstrated the same with group of her students. In February Lillie Carter, soprano, sang a beautiful group of negro spirituals. The District Conference is scheduled for April 25, to be held on the campus of Pacific

Lutheran College. We will close the year with the May meeting at which time the new officers will be installed and Dorothy Gilmore, soprano, will present Dvorak's *Biblical Songs*.—DOROTHY PATTERSON, *Historian*.

## PACIFIC SOUTHWEST

MU NU CHAPTER started the year with a successful rush tea and another one of our fun-spaghetti rush dinners—the kind with candlelight, peasant girls, and red and white checkered tablecloths. Our chapter pooled its efforts with those of the SC chapters of Sigma Alpha Iota and Phi Mu Alpha Sinfonia to completely clean up a newly-inherited joint "chapter room." Later in the year we plan to furnish it effectively and make curtains for it. At the Founders Day Banquet our chapter was represented, among others, by its President Judy Hubbard, who was in charge of the Founders Day Ceremony. After Christmas vacation we had a dinner meeting in the chapter room with Dr. Pauline Alderman, head of the music history and literature department in the SC School of Music, and Joan Schaefer, dean of women at SC (both MΦ's) as our guests. We discussed the MΦE district conference which Mu Nu hosted Feb. 21. At the conference there was a panel of speakers—including SC's Muriel Kerr, pianist and professor, and Joan Meggett, SC music librarian—each discussing her own special part of the profession. Then we met for lunch, at which time Mr. John Crown, head of the piano department in the SC School of Music, talked about music—with a new approach. After lunch there were discussion meetings and a musical program. We just recently had another dinner meeting, with Mrs. Ralph Rush, Mu Nu sponsor, and Harriet Payne, our district director, present. Mu Nu is preparing for the spring rush events, and is also planning for the annual MΦE concert of contemporary compositions to be given in April on the SC campus.—SHARON DAVIS, *Historian*.

PHI NU CHAPTER at U.C.L.A. began an eventful year last February, 1958, by helping in the presentation of the Joy

Kim Concert. The proceeds, in the form of a scholarship, was given to vocalist, Virginia Needles, now a pledge of our chapter. Next, the successful annual Spring Concert was given. A few of the participants were: Doris Seeley, Joyce Shanks, Barbara Terry, Mary Lou Anderson, Ann Turner, Diane Hodson, and Virginia Marvelli. Phi Mu Alpha joined us in participating in U.C.L.A.'s yearly Spring Sing, in which we won 1st place in Novelty Division. Mary Wallenberg, Ann Turner, Donna Quan, and Nancy Oliver are proud members of the Gregg Smith Singers, who during their concert tour this past summer, were warmly received across the United States and in seven European countries. Another Mu Phi, Joyce Shanks, won the local division honor in the National Arts and Letters Contest. Other members are in the Roger Wagner choir, school symphony orchestra, madrigal singers, or opera work shop. Ann Turner was the leading lady in the school production of "The Mighty Casey." Thelma Street, President, announces a membership of thirty, including six pledges who are: Alice Field, Mary Cooper, Virginia Needles, Donna Quan, Julie Raskin, and Bonnie Schub. Initiation will take place January 11th. Founders Day ceremony was held at the Glenaire Country Club; Virginia Needles was guest soloist. An informal rush party with a Hawaiian theme was fun for all. Phi Mu Alpha and Mu Phis combined in caroling and a Christmas party. Both groups planned snow trips in February.—VIRGINIA MARVELLI, *Historian*.

EPSILON ETA CHAPTER has been busy this semester sponsoring a new program at Pepperdine College called "Coffee Time Concerts." The concerts are a weekly event. After the program our Vice President Jo Ann Van Dalen assisted by chapter members serve hot coffee and cookies in the foyer of the auditorium. Selling Christmas cards and bright gift wrapping paper enabled our chapter to raise \$75.00 to award as a scholarship to an incoming freshman girl majoring in music. We welcomed the Holiday Season with a Christmas Program at school in which all of our members participated. The program ended with the audience joining in the singing

of Christmas Carols. Epsilon Eta gave two long playing records to the Blind Institution of Los Angeles. On December 23 Epsilon Eta and members of Phi Mu Alpha Sinfonia held a Christmas Party at the home of our Vice President Jo Ann Van Dalen. After a wonderful time and delicious refreshments we went to the homes of several teachers from our College to bring Christmas joy by singing carols to them and their families. We welcomed this semester into our sorority a new sister Judy Landry, who is an excellent violinist. Vola Gribble is doing a wonderful job as our new sponsor. She is a special friend to all of us and we are proud to have her.—SUE DI JERLANDO, *Historian*.

BEVERLY HILLS CHAPTER, opened the fall social calendar in September with a delightful informal supper at the home of our vice-president Betty Yaeger where plans for the ensuing busy year of regular meetings and special events were laid. Founders Day, a colorful formal dress affair was a joint dinner meeting of eight local active and alumnae chapters at the Glenaire Country Club with San Fernando Chapter in charge of the arrangements including the musical program.

Thirty-five members and guests gathered in December at the new and beautiful home of Esther Funk, one of our past presidents, where tea, conversation and a Christmas music program celebrated our tenth anniversary. Esther Wiedower accompanied Zaruhi Elmassian, guest artist, in a group of Christmas numbers. Bea Carpenter, Ways and Means Chairman, engineered a charming Fashion Show, Tea and Bridge at the University of Southern California YMCA in January. This was not only a social success but a financial one as well. Opal Skolnick and Chapter member models left us drooling when they modeled new clothes which Altana Boylan described and priced. Phyllis Tarpley commanded the kitchen and two of our scholarship participants presented the musical program. On February 21, Dr. Pauline Alderman chaired the Mu Phi District conference at Saunders Hall, USC. Luncheon was followed by a round table discussion of sorority business. Assisting



were Muriel Kerr, Edith Kritner, Joan Meggett, Helen Dill, and Elizabeth May. All eyes were focused on March 30 when the big annual scholarship fund concert sponsored by all local chapters took place at the Ebell Club. Artists generously contributing the benefit program were Gabor Rejto, cellist and Adolph Baller, pianist, who gave a recital of five Beethoven sonatas.

We are happy to tell you that Billie Riggo and a former member, Dr. Margaretta Walker, our past National President, were selected for Who's Who in America. Billie, a pianist and composer, presented a broadcast on March 1 over KFAC with other artists.

Our rummage sale, by no means the least of our efforts, is scheduled for April 18. Bea Carpenter deserves a medal for her continued efforts on this yearly project which brings considerable revenue for our scholarship project.—EDNA L. GLASSBROOK, *Historian*.

LOS ANGELES ALUMNAE CHAPTER has been having a stimulating season under the wise and understanding guidance of Martha Day, our president. Since two chapters have been formed from ours, we often have homecoming visits from our Pasadena sisters and those from the San Fernando Valley. We enjoy these calls and our members return the calls.

Perhaps the most heart-warming program of 1958 was our Christmas celebration. It was a musical given by two generations of musicians. Dorothy Spencer Remsen (a harpist of note) played the piano accompaniment for her son Eric, who played the flute. Emily Williams Sullivan and her ten-year-old daughter, Emily Ann, looked like pictures as they played their harp, the small girl playing her mother's concert harp. For their second number they played a composition of Emily Ann's. The only daughter who played the piano was June Evers, daughter of Darleen Williams Evers, who was one of the hostesses for the afternoon. Michelle Latta, with her violin and her mother, Frances Price Latta, at the piano; and Alice Swan with her cello, and her mother Ruth Taylor at the piano gave all the sixty guests pleasure.

The January meeting featured Margery

Knapp MacKay, mezzo-soprano, accompanied by her husband, Harper MacKay. Margery was recently a "runner up" in the Metropolitan Opera area auditions. She sings with the Harper MacKay Ensemble that in January gave a concert at California Institute of Technology. She is soon to sing with the Cosmopolitan Opera in San Francisco in the mezzo-soprano roles in *Madam Butterfly*, *La Traviata*, *Rigoletto*. The February program was given at the Mount Hollywood Congregational Church. Vola Gribble, contralto, Minabel Hunt and Frances Latta, organists, gave a beautiful program in the spirit of the Lenten season.

The district conference for this area was held at the University of Southern California. In spite of the rainy weather the attendance was good and the cordial and alert spirit of Mu Phi Epsilon was present.—EMMA SKILLMAN STONE, *Historian*.

PALO ALTO ALUMNAE CHAPTER revealed its gay, holiday spirit at a Christmas party held at the home of Marian Everson. Marian and her family, with the aid of four-month old Stevie Nemeth, son of Eunice Nemeth, portrayed the Christmas scene, while Marian, soprano, sang a Christmas lullaby. The Mu Phi Choral Group sang under the direction of Marian Everson, which was followed by musical games. Since the party was held between Christmas and New Year's Day, we closed with the singing of Auld Lang Syne.

At our January meeting, Sue Campbell, soprano, performed four operatic arias, contrasting American and European operas and also sang selections of contemporary American composers. Esle Faust, Music Consultant in the San Carlos Elementary School District, discussed public school music methods, including performance by the group on various Latin American percussion instruments. Annual scholarship auditions were held February 23 at the home of Marjory Sherman.

The winner of our \$200 scholarship which is presented annually to a Stanford University undergraduate student, was freshman music major Walter Moore, pianist, who performed *Sonata in*

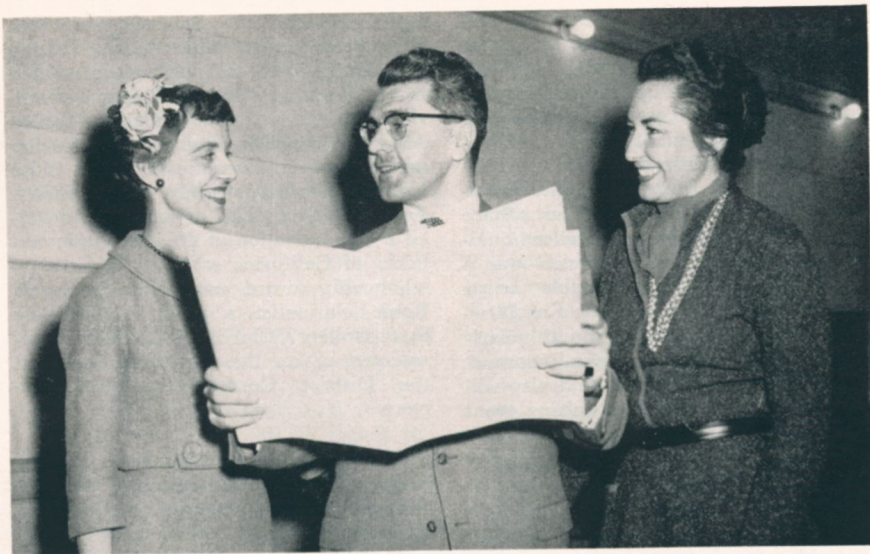
*D major*, K. 576: 1st movement by Mozart; *Variations on the name Abegg* by Schumann; and "Jardins sous la Pluie" by Debussy. Runner-up and recipient of a \$100 scholarship given generously by Marjory and Harold Sherman was Constance Seeley, pianist, performing "Funerailles" (No. 7 from *Harmonies poetiques et religieuses*) by Franz Liszt. Since the program displayed an excellent quality of musicianship, the decision was a close one. The other capable artists were Robert Bowman, pianist; Kay Newhouse, violoncellist; James Smith, clarinetist and Barbara Bowman, soprano. Walter Moore and Constance Seeley will perform at our annual fund-raising event for this scholarship, The Matinee Musicale, to be held in April.—VERNA HAGEN ELIAS, *Historian*.

SAN JOSE ALUMNAE began the fall season with a meeting at the home of Barbara Hector. Violet Thomas gave a detailed report of the national convention held in June. The yearbook for 1958-59 was written and assembled by Arline Cox, chairman, Marjory Morgan, Edith Eagan, and Roberta O'Connell. Our theme for the year is "Living with Music" in organizations, travel, community Christmas traditions, Home Schools, Folklore, church and literature. At each monthly meeting a phase of the theme is developed. At the October meeting Frances Robinson, violinist and San Jose College faculty member, gave the program: "Living with Music Around South America" with slides and lecture. "Living with Music in the Community" was the November meeting theme at which time we observed Founders Day with Phi Mu Chapter. Carol Cox, violinist, accompanied by Arline Cox, represented our chapter by playing *Sonata in D* by Leclair. Katherine Sorensen played *Sonata No. 2* for flute, by La Vibray, accompanied by Edith Eagan. A Christmas party was held at the home of Edith Eagan. "Living with Music in Christmas Traditions" was presented by Roberta O'Connell. A choral ensemble sang carols with piano and flute accompaniment. Eva Bell Fuller gave a reading. The January meeting featured the theme "Living with Music in the Home" and was developed by the Thomas Eagan family, the Wayne

Sorensens, and the Shelden daughters. The February meeting theme "Living with Music in the Schools" was presented by Arline Cox, director of music education in Alum Rock Unified District, Alice Shelden, Marjory Morgan, teacher and supervisor of music of Santa Clara Co. Schools respectively, and Dorothy Fouch, teacher. This presentation included a demonstration of the new music text books of California schools. The annual scholarship award was given to Carole Rome, clarinetist, a junior at San Jose State College. Clorinda Di Lonardo represented us on the musical program at the District Conference.—ALMA ANDREWS, *Historian*.

STOCKTON ALUMNAE CHAPTER: In February, College of the Pacific, Stockton College, Stockton Chorale and local instrumentalists combined to present a full scale production of *Aida* in English. Mu Phi alumnae participating in the opera were Nadine Stuhlmuller Salonites as "Aida"; Frances Groves Perry as "Amenis"; June Hook Spencer as the high priestess; Sheila Gillen, Fay Lowes, Dorothy Sandelius—chorus; Debbie Corra, Virginia Howe, Alice Martin, Irva Rageth, Jane Roberts—orchestra. On March 2nd, June Spencer was guest soloist with the Stockton symphony at their 4th concert of the season. She sang "Depuis le jour" from *Louise* and "Adele's Laughing Song" from *Die Fledermaus*. A carload of Stockton Alums attended the regional conference in San Mateo on March 14th. Part of our February meeting was spent addressing envelopes to 300 former Mu Eta girls inviting them to a "reunion" on April 25th honoring Wilhelmina Harbert, Mu Eta counselor and head of the music therapy at C.O.P.—on her retirement. The collegiate and alumnae chapters are working together and are hoping for a large attendance and the opportunity to again meet many old friends. On April 28th a group will present our yearly musical program at the State Farm annex. At that time magazines collected for their use will be delivered. Our final meeting in May will be a potluck dinner with Mu Eta members. Installation of officers will be held with Dorothy Sandelius heading the roster of officers for the coming year.—IRVA RAGETH, *Historian*.





△ ROSALIE SPECIALE, National President of Mu Phi Epsilon, discusses the New York Premiere of Carlisle Floyd's new opera WUTHERING HEIGHTS, given April 9, at the New York City Center with Julius Rudel, Conductor, and Phyllis Curtin (right), who had the leading soprano role.

The New York Chapter of Mu Phi Epsilon, Adelaide Adams, President, took a block of tickets for this opening performance with a two-fold purpose: to help advance American music and to secure funds for a scholarship which will be given to a student who attends the Juilliard School of Music next fall.

## Nine Abstractions—Words & Music by Mu Phis

△ CAMILLE ANDERSON wrote the words in her book of abstract poems entitled "Abstractions 101" and RUTH BRADLEY has set them to music as follows: "Nine Abstractions" soon to be published in New York City; "Eight Abstractions," "Seven Abstractions," "Six Abstractions" with "Five," "Four," "Three," "Two" to follow. The last "one" is done—it was at first written as the

final one of "Eight." The "Eight" and "Seven" were performed at Carnegie Recital Hall on October 28 and then at the New York City Alumnae Chapter's Founders Day meeting on November 10, they performed the "Nine Abstractions." Also included that evening was the song on which these talented sisters collaborated and which appears in the new Mu Phi Epsilon Songbook.

YOUR ATTENTION, PLEASE . . .

## *There's Still Time!*

We want to make this the best year ever in our magazine subscription sales. Our national project in maintaining the music school at Gads Hill is dependent on the coöperation of every Mu Phi. So, let's make a concerted effort by May 31.

*Get your magazine subscriptions in  
to the National Magazine Chairman,*

MARJORIE BERNAT

*785 Pierce St., Birmingham, Michigan*

## FRIENDSHIP CORNER

*with its varied, interesting articles,  
invites and merits your patronage.*

Investigate and invest today. You will thereby take an active part in helping the Friendship Fund grow. We are depending on YOU to send orders to:

LUCILE FERRIS  
629 West 70th Terrace  
Kansas City, Missouri



# Directory of Mu Phi Epsilon

## FOUNDERS

DR. WINTHROP S. STERLING, *Died November 16, 1943*  
 ELIZABETH MATHIAS FUQUA (Mrs. JOHN W.), *Died May 17, 1950*

## HONORARY ADVISORY BOARD

ROXIELETTIE TAYLOR YEATES (Mrs. JOHN), 9, 1119 Rumsey Ave., Cody, Wyo., 1916-17  
 HARRIET THOMPSON WRIGHT (Mrs. WILLIAM E.), X, 482 Glen Ave., Fresno, Calif., 1917-20  
 DORIS BENSON (Mrs. WALTER), IA, Spikeswood Farm, Woodruff, Wisc., 1920-22  
 LUCILLE EILERS BRETTSCHEIDER (Mrs. AUGUST, JR.), A, 3426 Morrison Place, Clifton, Cincinnati, Ohio, 1926-28  
 ORAH ASHLEY LAMKE (Mrs. GEORGE W.), Δ, 1327 McCutcheon Rd., Richmond Heights 17, Mo., 1928-30  
 BERTHA M. (KING) VAN TILBURG (Mrs. V. B.), ME, 1485 Sunrise Dr., Vista, Calif., 1930-32, 34-40  
 DOROTHY ELIZABETH PATON, I, Observatory Lodge, Apt. 304, 1402 Washington Heights, Ann Arbor, Mich., 1932-34  
 ELIZABETH AYRES KIDD (Mrs. A. EUGENE, JR.), MΞ, New Trier High School, Winnetka, Ill., 1940-42  
 AVA COMIN CASE (Mrs. LEE O.), I, School of Music, University of Michigan, Ann Arbor, Mich., 1942-48  
 MARGARETTE WIBLE WALKER, MN, 224 N. "G" St., Tacoma 3, Wash., 1948-50  
 RUTH ROW CLUTCHER (Mrs. JOHN), O, 21 Kent Rd., Upper Darby, Penna., 1950-54  
 ELEANOR HALE WILSON (Mrs. P. RAYMOND), T, 2800 39th Ave., W., Seattle 99, Wash.

## NATIONAL COUNCIL 1958-1960

*National President*—ROSALIE SPECIALE, ΦM, 560 North First, San Jose 12, Calif.  
*National First Vice President*—ROSA-MOND MARTINDALE DAVIS, MΞ, 3223 Beech St. N.W., Washington 15, D. C.  
*National Second Vice President*—GLORIAN BUTLER THOMAS, T, 326 Walhalla Road, Columbus 2, Ohio  
*National Third Vice President*—JANE HINKLE MCCLUGGAGE, T, 3885 Quay St., Wheatridge, Colo.  
*National Fourth Vice President*—HELEN PURCELL MAXWELL, Z, 5510 Sheridan Road, Chicago 40, Ill.  
*National Fifth Vice President*—HILDA HUMPHREYS, Σ, 241 Glendale Ave., Highland Park 3, Mich.  
*National Editor*—RUTH HAVLIK, ΦP, 532 S.E. Fifth St., Apt. A, Minneapolis 14, Minnesota

## NATIONAL EXECUTIVE OFFICE

1139 N. Ridgewood, Wichita 14, Kans.

*National Executive Secretary-Treasurer*—VIRGINIA PORTER FISER (Mrs. VAN E.), Ξ, 1139 N. Ridgewood Dr., Wichita 14, Kans.

## MU PHI EPSILON NATIONAL CHAIRMEN

BY-LAWS: ELEANOR WILSON (Mrs. P. R.), 2800 39th Avenue West, Seattle, 99, Wash.  
 FRIENDSHIP CORNER: LUCILE FERRIS (Mrs. CARL R.), 629 West 70 Terrace, Kansas City, Mo.  
 MAGAZINE SUBSCRIPTION AGENCY: MARJORIE BERNAT (Mrs. SAUL), 785 Pierce, Birmingham, Mich.  
 CURTIS REPRESENTATIVE: HELEN RAMAGE (Mrs. JOHN A.), 15724 Turner Ave., Detroit 38, Mich.  
 MARIE MORISSEY KEITH SCHOLARSHIP AWARD AND ELIZABETH MATHIAS HONOR AWARD: EILENE RISEGARI (Mrs. SILVIO), 4102 37th N.E., Seattle 5, Wash.  
 MΦE ARTIST MEMBERS: DORIS FRERICHS, 227 Claremont Road, Ridgewood, New Jersey  
 MΦE SCHOOL OF MUSIC AT GADS HILL CENTER: *Director*: WINIFRID ERICKSON, 1951 W. Schiller St., Chicago 22, Ill.  
*Treasurer*: ALMA E. GRAMBAUER, 1380 Henry St., Des Plaines, Ill.  
*Representative on Settlement Board*: MARIE MUELLER WALLERICH (Mrs. GEORGE W.), 511 Forest Ave., Oak Park, Ill.  
 MUSIC LIBRARIAN: DR. RUTH WATANABE, Sibley Library, Eastman School of Music, Rochester, N. Y.  
 MUSIC THERAPY: VIOLA ANDERSON (Mrs. HENRY O.), 1038 First St. N., Fargo, N. D.  
 NATIONAL CONVENTION: MARTHA DAY, 822 S. Longwood Ave., Los Angeles 5, Calif.  
*Music Chairman*: HARRIET PAYNE, 2628 E. Santa Ysabel, Fullerton, Calif.  
 RITUAL: LUCILLE BRETTSCHEIDER (Mrs. AUGUST, JR.), 3426 Morrison Place, Clifton, Cincinnati, Ohio.  
 STERLING-MATHIAS SCHOLARSHIPS AT INTERLOCHEN: MIRIAM McLAUGHLIN (Mrs. R. H.), 1714 Hermitage Rd., Ann Arbor, Mich.

## DISTRICT DIRECTORS

DISTRICT No. 1: JOYCE GIBSON, 600 W. 111th St., 9-C, New York 25, N. Y.  
 DISTRICT No. 2: ELOISE HILL, 206 Main St., Clayton, N. J.  
 DISTRICT No. 3: MARY JANE HARVEY, 215 Lebanon Ave., Pittsburgh, Penna.  
 DISTRICT No. 4: EVELYN MORGAN (Mrs. J. E.), 908 Roanoke Road, Cleveland Heights 21, Ohio.  
 DISTRICT No. 5: KATHRYN NEWHOUSE, 3321 Stoezenfeld, Warren, Mich.  
 DISTRICT No. 6: RUTH LUCE (Mrs. DONALD), 5300 Donjoy Drive, Cincinnati 27, Ohio.  
 DISTRICT No. 7: HELEN BINKLEY (Mrs. L. S.), 4120 Ruckle St., Indianapolis 5, Ind.; MARIAN LAUT BATTY (Mrs. BERNARD), 1477 E. 77th St., Indianapolis, Ind.  
 DISTRICT No. 8: CAMILLA AYERS, 634 Neff Road, Grosse Pointe 30, Mich.  
 DISTRICT No. 9: BETTY BUCK (Mrs. W. E., JR.), 750 Cherry Tree Lane, St. Louis 24, Mo.  
 DISTRICT No. 10: AVANELLE POEHLER (Mrs. J. A.), 3928 Richfield Rd., Minneapolis 10, Minn.

THE SPRING 1959 TRIANGLE OF MU PHI EPSILON



- DISTRICT No. 11: JANESE RIDELL, 2945 South 42 St., Lincoln, Neb.  
 DISTRICT No. 12: META ANN KNECHT, 1308 East 81st Terrace, Kansas City, Mo.  
 DISTRICT No. 13: ROXELYN ROBBINS RHYMER (Mrs. TRUETT), 6507 Anita St., Dallas 14, Texas.  
 DISTRICT No. 14: MARILYN COOK, 848 E. S. Temple, Salt Lake 2, Utah.  
 DISTRICT No. 15: DOROTHY MURRAY (Mrs. DONALD), 1021 E 28th, Spokane, Wash.  
 DISTRICT No. 16: JANET WILKIE (Mrs. R. F.), 5744 34th N.E., Seattle 5, Wash.  
 DISTRICT No. 17: PEARL PETERSON (Mrs. H. W.), 13548 N.E. Glisan St., Portland 30, Ore.  
 DISTRICT No. 18: VIRGINIA BEARDSLEY (Mrs. FRED), 439 Mountain Blvd., Oakland 11, Calif.  
 DISTRICT No. 19: HARRIET PAYNE, 2628 E. Santa Ysabel, Fullerton, Calif.

## ANNUAL SCHOLARSHIPS

- |  |  |
|--|--|
| EDWARD MACDOWELL ASSOCIATION           | NEIGHBORHOOD MUSIC SCHOOL, LOS ANGELES, CALIF. |
| NATIONAL MUSC CAMP, Interlochen, Mich. | COMMUNITY MUSIC SCHOOL, INC., St. Louis, Mo.   |
| FRIENDSHIP HOUSE, Washington, D. C.    |  |

## NATIONAL AFFILIATIONS

- |                                       |   |
|---------------------------------------|---|
| NATIONAL FEDERATION OF MUSIC CLUBS    | NATIONAL ASSOCIATION OF AMERICAN COMPOSERS AND CONDUCTORS             |
| MUSIC TEACHERS NATIONAL ASSOCIATION   | NATIONAL MUSIC COUNCIL  |
| MUSIC EDUCATORS NATIONAL CONFERENCE   | NATIONAL ASSOCIATION FOR MUSIC THERAPY ( <i>Sustaining member</i> )   |
| NATIONAL ASSOCIATION SCHOOLS OF MUSIC | NATIONAL GUILD OF COMMUNITY MUSIC SCHOOLS ( <i>Auxiliary member</i> ) |
| PROFESSIONAL PANHELLENIC ASSOCIATION  | BRILLE INSTITUTE OF AMERICA COUNCIL OF ORGANIZATIONS                  |

## ATLANTIC PROVINCE

*Province Governor*—NATIONAL FIRST VICE PRESIDENT

- |  |   |
|--|---|
| BETA—New England Conservatory of Music, Boston, Mass. <i>President</i> —Patricia Slattery, 290 Huntington Ave., Boston, Mass.                                | Barbara Schurr, 103 Monument St., Baltimore, Md.  |
| MU—Brenau College, Gainesville, Ga. <i>President</i> —Marie O'Kelly, 537 Academy St., Gainesville, Ga.   | PHI UPSILON—Boston University, Boston 16, Mass. <i>President</i> —Gretchen Dirksmeyer, 290 Main St., Winthrop 52, Mass.   |
| PSI—Bucknell University, Lewisburg, Pa. <i>President</i> —Katherine Taylor, Box W-66, Bucknell University, Lewisburg, Pa.                                    | PHI PSI—Mary Washington College of the University of Virginia, Fredericksburg, Va. <i>President</i> —Joyce Anne Moore, Box 1912, College Station, Fredericksburg, Va. |
| MU UPSILON—Eastman School of Music of the University of Rochester, Rochester, N. Y. <i>President</i> —Laurie Bolvig, 424 University Ave., Rochester 7, N. Y. | PHI OMEGA—Westminster College, New Wilmington, Pa. <i>President</i> —Marilyn Moyer, Ferguson Hall, Westminster College, New Wilmington, Pa.                           |
| PHI GAMMA—Peabody Conservatory of Music, Baltimore 2, Md. <i>President</i> —   |   |

- |   |   |
|---|---|
| EPSILON NU—West Virginia University, Morgantown, W. Va. <i>President</i> —Betsy Miller, 2925 University Ave., Morgantown, W. Va.            | BOSTON ALUMNAE CHAPTER— <i>President</i> —  |
| EPSILON UPSILON—Duquesne University, Pittsburgh 19, Pa.— <i>President</i> —Dolores A. Grabowski, 110 Bellanca Ave., Pittsburgh 27, Pa.      | CONNECTICUT VALLEY ALUMNAE CHAPTER— <i>President</i> —Madelyn Robb (Miss), 187 Broad St., Hartt College of Music, Hartford, Conn. |
| EPSILON PSI—Julliard School of Music, New York 27, N. Y. <i>President</i> —   | MIAMI ALUMNAE CHAPTER— <i>President</i> —Mary Lou Weaver (Mrs. George), 3621 N.W. 15th St., Miami, Fla.                           |
| ALPHA BETA—Hartt College of Music, Hartford, Conn. <i>President</i> —Elizabeth Richardson Sagebeer, 189 Wood Pond Rd., West Hartford, Conn. | NEW YORK ALUMNAE CHAPTER— <i>President</i> —Bettylou Scandling, 62 West 56th, New York 19, N. Y.                                  |
| ALPHA ZETA—Radford College, Radford, Va. <i>President</i> —Ann Cecil Smith, Box 511, Radford College, Radford, Va.                          | PHILADELPHIA ALUMNAE CHAPTER— <i>President</i> —Adelia A. Cubbon, 326 Old Forrester Rd., Carroll Park, Philadelphia 31, Pa.       |
| ALPHA ETA—American University, Washington, D. C. <i>President</i> —Nadine Smith, 808 Quackenbos St., N.W., Washington 11, D. C.             | PITTSBURGH ALUMNAE CHAPTER— <i>President</i> —Barbara Rankin, 235 Summit Ave., Pittsburgh 2, Pa.                                  |
| BALTIMORE ALUMNAE CHAPTER— <i>President</i> —Nyla Wright Ruppberger (Mrs. G. A.), 954 Dulaney Valley Rd., Apt. 2, Towson 4, Md.             | ROCHESTER ALUMNAE CHAPTER— <i>President</i> —Gladys Rossdeutscher, 691 E. Main St., Rochester 5, N. Y.                            |
|   | WASHINGTON ALUMNAE CHAPTER— <i>President</i> —Shirley Schleter (Mrs. J. C.), 4704 Strathmore Ave., Garrett Park, M.D.             |

## GREAT LAKES PROVINCE

*Province Governor*—NATIONAL FIFTH VICE PRESIDENT

- |   |  |
|---|--|
| GAMMA—University of Michigan, Ann Arbor, Mich. <i>President</i> —Marlane Paxson, 3509 E. Couzens Hall, University of Michigan, Ann Arbor, Mich. | PHI OMICRON—Cleveland Institute of Music, Cleveland, O. <i>President</i> —Julian Luiza, 918 Helmsdale Rd., Cleveland 12, O.  |
| EPSILON—University of Toledo, Toledo 6, O. — <i>President</i> —Ann Makowski (Mrs. Joseph), 1625 Campus Rd., Toledo 6, O.                        | PHI SIGMA—De Paul University, Chicago, Ill. <i>President</i> —Carol Miller, 1725 North Shore Ave., Chicago 26, Ill.          |
| SIGMA—Northwestern University, Evanston, Ill. <i>President</i> —Barbara Maslow, 1121 Manor Drive, Wilmette, Ill.                                | EPSILON LAMBDA—Eastern Michigan College, Ypsilanti, Mich. <i>President</i> —Nancy Cook, 10010 Rawsonville Rd., Willis, Mich. |
| PHI—Mount Union College, Alliance, O. <i>President</i> —Janice Black, Elliot Hall, Mt. Union College, Alliance, O.                              | EPSILON XI—University of Illinois, Urbana, Ill. <i>President</i> —Lois Doniger, 1005 S. Lincoln, Urbana, Ill.                |
| MU XI—American Conservatory of Music, Chicago 4, Ill. <i>President</i> —Patricia Miller, 410 S. Michigan Ave., Chicago 5, Ill.                  | ANN ARBOR ALUMNAE CHAPTER— <i>President</i> —Miriam McLaughlin (Mrs. Rowland), 1714 Hermitage Road, Ann Arbor, Mich.         |
| MU PHI—Baldwin-Wallace College, Berea, O. <i>President</i> —Marcia Kinder, Findley Hall, Baldwin-Wallace College, Berea, O.                     | CENTRAL CHICAGO ALUMNAE CHAPTER— <i>President</i> —Mary Ruth Craven, 1423 E. 53rd St., Chicago 15, Ill.                      |
| PHI KAPPA—Wayne State University, Detroit, Mich. <i>President</i> —Beverly Adams, 16538 Normandy, Detroit 21, Mich.                             | CHICAGO ALUMNAE CHAPTER— <i>President</i> —Eugenia Wright Anderson (Mrs. R. S.), 7 Lawndale Ave., Hammond, Ind.              |
|   | CLEVELAND ALUMNAE CHAPTER— <i>President</i> —Evelyn Treger Morgan (Mrs.  |



J. E.), 908 Roanoke Rd., Cleveland Heights 21, O.

CLEVELAND HEIGHTS ALUMNAE CHAPTER—*President*—Eunice Podis Weiskopf (Mrs. R.), 2653 Ramsey Rd., Cleveland 24, O.

DETROIT ALUMNAE CHAPTER—*President*—Ellen Jones (Mrs. Robert), 18475 Maryland, Detroit 41, Mich.

EVANSTON-NORTH SHORE ALUMNAE CHAPTER—*President*—Mary Carter

## EAST CENTRAL PROVINCE

*Province Governor*—NATIONAL SECOND VICE PRESIDENT

ZETA—De Pauw University, Greencastle, Ind. *President*—Margaret McElwain, 202 E. Hanna, Greencastle, Ind.

KAPPA—Jordan College of Music of Butler University, Indianapolis, Ind. *President*—Roberta E. Nay, 5153 Atherton North Drive, Indianapolis 19, Ind.

MU DELTA—Conservatory of Music of Kansas City, Kansas City, Mo. *President*—Shirley Decker, 4420 Warwick, Kansas City, Mo.

MU PI—Ohio Wesleyan University, Delaware, O. *President*—Gloria Fox, Monnett Hall, Ohio Wesleyan University, Delaware, O.

PHI THETA—Lindenwood College, St. Charles, Mo. *President*—Karen Glaser, Lindenwood College, St. Charles, Mo.

PHI PHI—University of Kansas City, Kansas City 10, Mo. *President*—Sue Harris, 6816 Montgall, Kansas City, Mo.

EPSILON GAMMA—Belhaven College, Jackson, Miss. *President*—Martha Jo Sumrall, Belhaven College, Jackson, Miss.

EPSILON ZETA—Hendrix College, Conway, Ark. *President*—Sara Carl Lee, Hendrix College, Conway, Ark.

EPSILON KAPPA—Southern Illinois University, Carbondale, Ill. *President*—Mary Jo Cozad, Woody Hall, C-215, Southern Illinois University, Carbondale, Ill.

EPSILON OMICRON—Indiana University, Bloomington, Ind. *President*—Elizabeth Kemmer, 1018 E. 3rd St., Bloomington, Ind.

Jenkins (Mrs. T. A.), 1319 Gregory Ave., Wilmette, Ill.

MILWAUKEE ALUMNAE CHAPTER—*President*—Virginia Renner, 2825 E. Newberry Rd., Milwaukee, Wis.

TOLEDO ALUMNAE CHAPTER—*President*—Ruth Werchman (Mrs. John), 648 Winthrop St., Toledo 10, O.

URBANA-CHAMPAIGN ALUMNAE CHAPTER—*President*—Marian Emilie Soule (Mrs. Don M.), 1207 W. Park Ave., Champaign, Ill.

EPSILON TAU—Washington University, St. Louis 5, Mo. *President*—Kathryn Walker Huelster (Mrs. Richard), 5116 Delmar Blvd., Apt. 8, St. Louis 8, Mo.

ALPHA ALPHA—The College-Conservatory of Music, Cincinnati, O. *President*—Phyllis Willis, College-Conservatory of Music, Cincinnati 19, O.

ALPHA GAMMA—Mississippi Southern College, Hattiesburg, Miss. *President*—Peggy Lewis, Station A, Box 758, Mississippi Southern College, Hattiesburg, Miss.

CINCINNATI ALUMNAE CHAPTER—*President*—Roma Carpenter (Mrs. Edwin), 6161 Dryden, Cincinnati 13, O.

COLUMBIA ALUMNAE CHAPTER—*President*—Marjorie M. Orton, 1607 Amelia St., Columbia, Mo.

COLUMBUS ALUMNAE CHAPTER—*President*—Agnes Thompson Wolfrom (Mrs. M. L.), 168 Fallis Rd., Columbus 14, O.

DAYTON ALUMNAE CHAPTER—*President*—Wilma Jean Meckstroth (Mrs. Robert), 2500 Parklawn Dr., Dayton 40 (Kettering), O.

EVANSVILLE ALUMNAE CHAPTER—*President*—Claudia Hyde (Mrs. Melvin), 1700 Lincoln Ave., Evansville, Ind.

GAINESVILLE ALUMNAE CHAPTER—*President*—Marguerite Ringo (Mrs. B. Buckner), 452 N. Prior St., Gainesville, Ga.

INDIANAPOLIS ALUMNAE CHAPTER—*President*—Rachel Boothroyd, 732 E. 33rd St., Indianapolis 5, Ind.

KANSAS CITY ALUMNAE CHAPTER—*President*—Irene Haynes Sees (Mrs.

Emil A.), 435 W. 58th Terrace, Kansas City 13, Mo.

KANSAS CITY EVENING ALUMNAE—*President*—Dolores Mae Waters, 3220 Karnes Blvd., Kansas City 11, Mo.

ST. LOUIS ALUMNAE CHAPTER—*Presi-*

*dent*—Dorothy Smutz (Mrs. Harold T.), 619 Hollywood Place, Webster Groves 19, Mo.

ST. LOUIS COUNTY ALUMNAE CHAPTER—*President*—Laura Marriott, 436 Carrswold Drive, Clayton 5, Mo.

## NORTH CENTRAL PROVINCE

*Province Governor*—NATIONAL FOURTH VICE PRESIDENT

OMEGA—Drake University, Des Moines, Ia. *President*—Beth Jasper, 2700 University, Des Moines, Ia.

MU ALPHA—Simpson College, Indianola, Ia. *President*—Mary Louise Krabel, Mary Berry Hall, Simpson College, Indianola, Ia.

MU GAMMA—University of Nebraska, Lincoln, Neb. *President*—Cynthia Hansen, 1619 "R" St., Lincoln, Nebr.

MU EPSILON—MacPhail College of Music, Minneapolis, Minn. *President*—Gloria Mattson (Mrs. Kenneth), 5424 27th Ave. So., Minneapolis, Minn.

MU TAU—University of South Dakota, Vermillion, S. D. *President*—Betty Moorhead, East Hall, State University of South Dakota, Vermillion, S. D.

MU PSI—Coe College, Cedar Rapids, Ia. *President*—Wilma Cox, Voorhees Hall, Coe College, Cedar Rapids, Ia.

PHI ZETA—Morningside College, Sioux City, Ia. *President*—Carol Anne Nickel, 3318 Vine Ave., Sioux City, Ia.

PHI IOTA—Concordia College, Moorhead, Minn. *President*—Ruth Langemo, Box

356, Concordia College, Moorhead, Minn.

PHI RHO—Minneapolis College of Music, Minneapolis, Minn. *President*—Rita Andrescik, 60 So. 11th St., Minneapolis, Minn.

CEDAR RAPIDS ALUMNAE CHAPTER—*President*—Mardean Holveck (Mrs. F. C.), 1014 Maplewood Dr. N.E., Cedar Rapids, Ia.

DES MOINES ALUMNAE CHAPTER—*President*—Frances Wellman (Mrs. Russell), 3848 River Oaks Drive, Des Moines, Ia.

FARGO ALUMNAE CHAPTER—*President*—Hildur Shaw (Mrs. W. S.), 1319 S. 9th St., Fargo, N. D.

LINCOLN ALUMNAE CHAPTER—*President*—Irene Barber (Mrs. De Witt), 2315 S. 14th St., Apt. D, Lincoln, Neb.

MINNEAPOLIS ALUMNAE CHAPTER—*President*—Estelle Wylie (Mrs. E. C.), 6030 Upton So., Minneapolis 10, Minn.

RICHFIELD ALUMNAE CHAPTER—*President*—Aldys Nelson, 6701 1st Ave. So., Minneapolis 23, Minn.

## SOUTH CENTRAL PROVINCE

*Province Governor*—NATIONAL PRESIDENT

XI—University of Kansas, Lawrence, Kans. *President*—Marianne L. Marshall, 1528 W. 22nd St. Terrace, Lawrence, Kans.

MU THETA—University of Texas, Austin, Tex. *President*—Emma Frances DeShong, 205 Carothers Dormitory, Austin, Tex.

MU KAPPA—University of Oklahoma, Norman, Okla. *President*—Carol Ann Cook, 736 S. Lahoma, Norman, Okla.

MU MU—Kansas State College, Manhattan, Kans. *President*—Carol Kori-nek, Southeast Hall, Kansas State College, Manhattan, Kans.

MU RHO—Lamon School of Music at the University of Denver, Denver, Colo. *President*—Sharon Holdaway, 2290 So. Vinc. #728, Denver 10, Colo.

MU CHI—Southern Methodist University, Dallas, Tex. *President*—Lou Ann Williams, 5519 Matalee, Dallas, Tex.



PHI EPSILON—College of Emporia, Emporia, Kans. *President*—Sofia Strand, Dunlap Hall, College of Emporia, Emporia, Kans.

PHI XI—Baylor University, Waco, Tex. *President*—Ann Owens, 218 Allen Hall, Baylor University, Waco, Tex.

PHI PI—University of Wichita, Wichita, Kans. *President*—Shirley Gilley, 1950 S. Main, Wichita, Kans.

PHI TAU—North Texas State College, Denton, Tex. *President*—Jamie Eloise Ray, Bruce Hall, Box 5639, North Texas Station, Denton, Tex.

EPSILON EPSILON—Texas Christian University, Ft. Worth, Tex. *President*—Rubyrae Foster, Box 862, Texas Christian University, Ft. Worth, Tex.

EPSILON MU—University of Utah, Salt Lake City, U. *President*—Judith Baur, 1387 E. First South, Salt Lake City, Utah

EPSILON PI—Texas Technological College, Lubbock, Tex. *President*—Betty Ann Townsend, Box 350, Weeks Hall, Texas Technological College, Lubbock, Tex.

EPSILON PHI—Friends University, Wichita, Kans. *President*—Charmaine

Louise Ioerger, R.R. #2, Cheney, Kans.

EPSILON CHI—Brigham Young University, Provo, U. *President*—Jean Nesbitt, 150 E. 7th North, Provo, U.

DALLAS ALUMNAE CHAPTER—*President*—Patricia Crenshaw, 1523 Cedar Hill, Dallas, Tex.

DENVER ALUMNAE CHAPTER—*President*—Hazeltime Larson (Mrs. Wilbur), 3795 Eudora St., Denver, Colo.

FORT WORTH ALUMNAE CHAPTER—*President*—Lillian J. Eley (Mrs. H. O.), 5212 Trail Lake Dr., Fort Worth 15, Tex.

OKLAHOMA CITY ALUMNAE CHAPTER—*President*—Jennie Cleaver (Mrs. William), 1301 S.E. 41st St., Oklahoma City, Okla.

SALT LAKE CITY ALUMNAE CHAPTER—*President*—Charlotte June Burgess (Mrs. C. E.), 2259 Downington, Salt Lake City, Utah

TULSA ALUMNAE CHAPTER—*President*—Frances Manning Hassler (Mrs. A. R.), 2148 So. Urbana, Tulsa 14, Okla.

WICHITA ALUMNAE CHAPTER—*President*—Virginia Randle Loveland, 434 Lexington, Wichita 8, Kans.

## PACIFIC NORTHWEST PROVINCE

*Province Governor*—NATIONAL EDITOR

NU—University of Oregon, Eugene, Ore. *President*—Mira Fronmayer, 791 E. 15th, Eugene, Ore.

TAU—University of Washington, Seattle 5, Wash. *President*—Lou Ann Wernli, 7224 29th N.E., Seattle, Wash.

MU BETA—Washington State College, Pullman, Wash. *President*—Jeanette Stein, Regent's Hill Dormitory, State College of Washington, Pullman, Wash.

MU ZETA—Whitman College, Walla Walla, Wash. *President*—Ardeth Barnfield, Whitman College, Walla Walla, Wash.

PHI LAMBDA—Willamette University, Salem, Ore. *President*—Barbara Rich Dixon, Alpha Chi Omega, Willamette University, Salem, Ore.

EPSILON DELTA—Lewis and Clark College, Portland 1, Ore. *President*—Mary

Evelyn Hetzel, Akin Hall, Rm. 27, Lewis and Clark College, Portland 19, Ore.

EPSILON THETA—Linfield College, McMinnville, Ore. *President*—Janet Good, 1005 S. Davis, McMinnville, Ore.

EPSILON IOTA—Eastern Washington College of Education, Cheney, Wash. *President*—Katheryn Patricia Bannister (Mrs. D'Arcy), 819 Elm St., Cheney, Wash.

EPSILON RHO—Montana State University, Missoula, Mont. *President*—Marie Vance, 601 Daly Ave., Missoula, Mont.

EPSILON SIGMA—Pacific Lutheran College, Parkland, Wash. *President*—Ruth Berhow, North Hall C-16, Pacific Lutheran College, Tacoma 44, Wash.

EUGENE ALUMNAE CHAPTER—*President*—Ruth Nerbas (Mrs.), 1400 Villard St., Eugene, Ore.

PORTLAND ALUMNAE CHAPTER—*President*—Nellie Tholen, 315 N.E. 41st Ave., Portland, Ore.

SALEM ALUMNAE CHAPTER—*President*—Edith Fairhour Gunnar (Mrs. Peter), 1225 Hillendale, North Salem, Ore.

## PACIFIC SOUTHWEST PROVINCE

*Province Governor*—NATIONAL THIRD VICE PRESIDENT

MU ETA—College of the Pacific, Stockton, Calif. *President*—Dorothy Busher, Epsilon Lambda Sigma, College of the Pacific, Stockton, Calif.

MU NU—University of Southern California, Los Angeles, Calif. *President*—Judy Hubbard, 666 W. 36th St., Los Angeles 7, Calif.

PHI MU—San Jose State College, San Jose, Calif. *President*—Karen Becker, 342 S. 11th, Apt. 4, San Jose, Calif.

PHI NU—University of California at Los Angeles, Los Angeles, Calif. *President*—Carol Bigenho (Mrs. Ed.), 5750 W. 74th, Los Angeles 45, Calif.

PHI CHI—Fresno State College, Fresno, Calif. *President*—Rita Weeks, 414 Fifth St., Clovis, Calif.

EPSILON ETA—George Pepperdine College, Los Angeles, Calif. *President*—Joanne Van Daalen, 6381 W. 78th St., Los Angeles 45, Calif.

EPSILON OMEGA—San Francisco State College, San Francisco, Calif. *President*—Marilyn Wilbur, 415 Shields St., San Francisco 27, Calif.

ALPHA DELTA—Sacramento State College, Sacramento, Calif. *President*—Patricia Dolores Wittig, 5535 "C" St., Sacramento 19, Calif.

ALPHA EPSILON—College of the Holy Names, Oakland, Calif. *President*—Helen Kramm, 3500 Mountain Boulevard, Oakland 19, Calif.

BEVERLY HILLS ALUMNAE CHAPTER—*President*—Thyra Snyder, 2818½ W. 85th St., Inglewood 4, Calif.

FRESNO ALUMNAE CHAPTER—*President*—Jane C. Bird (Mrs. C. Wesley), 617 E. Pine, Fresno, Calif.

SEATTLE ALUMNAE CHAPTER—*President*—Billie McCleary Jones (Mrs. W. M.), 2814 W. Lynn, Seattle 99, Wash.

SPOKANE ALUMNAE CHAPTER—*President*—Jean Chisholm Weekes (Mrs. John L.), E 3510 16th Ave., Spokane, Wash.

TACOMA ALUMNAE CHAPTER—*President*—Persis Reynolds Shook (Mrs. James E.), 915 N. Washington, Tacoma 6, Wash.

LONG BEACH ALUMNAE CHAPTER—*President*—Jeanne Roodhouse (Mrs. Ben), 3719 Roxanne Dr., Long Beach 8, Calif.

LOS ANGELES ALUMNAE CHAPTER—*President*—Edith Reeves Habig (Mrs. F. A.), 228 So. Occidental Blvd., Los Angeles 57, Calif.

PALO ALTO ALUMNAE CHAPTER—*President*—Sue Jones Campbell (Mrs. B. J.), 530 Fairfax Ave., San Mateo, Calif.

PASADENA ALUMNAE CHAPTER—*President*—Louise Paulson (Mrs. A. B.), 2017 Milan Ave., South Pasadena, Calif.

SACRAMENTO ALUMNAE CHAPTER—*President*—Jane Schlosser Cox (Mrs. John R.), 1411 Las Salinas Way, Sacramento 25, Calif.

SAN DIEGO ALUMNAE CHAPTER—*President*—Louise Ridgway Milner (Mrs. Carl), 4315 Maple Ave., La Mesa, Calif.

SAN FERNANDO VALLEY ALUMNAE CHAPTER—*President*—Mary Anna Essel (Mrs. Donald J.), 19518 Schoolcraft St., Reseda, Calif.

SAN FRANCISCO ALUMNAE CHAPTER—*President*—Muriel Tuttle, 7135 Gladys St., El Cerrito, Calif.

SAN JOSE ALUMNAE CHAPTER—*President*—Violet Thomas (Miss), 319 So. 5th, Apt. 5, San Jose, Calif.

STOCKTON ALUMNAE CHAPTER—*President*—Dorothy Sandelius (Mrs. Stanley), 2034 W. Inman St., Stockton, Calif.



# Balfour: The Mark of Elegance

## in Fine Jewelry

Your insignia, created by the skilled hands of Balfour craftsmen, is the mark of elegance and excellence. Wear your pin proudly to identify you with your fraternity.

### Price List

BADGES	
Plain, raised lyre.....	\$ 6.75
Plain, flat lyre.....	5.50
Close set pearl.....	11.00
Crown set pearl.....	15.75
Crown pearl, 3 diamonds.....	41.00
Crown pearl, 6 diamonds.....	65.00
Crown set all diamond.....	134.00
Crown set with 3 amethysts and 2 pearls in each corner.....	17.25
Crown set with 2 amethysts and 3 pearls in each corner.....	16.75
*Raised Lyre on badges, additional.....	1.25
White gold badges:	
\$2.00 additional for plain badges.	
\$3.00 additional for jeweled badges.	
Recognition pin, 10K gold.....	1.75
Pledge pin, sterling.....	1.00
Greek letter monogram pendant, 10K gold: no chain.....	2.25
with gold filled chain.....	3.00
PATRON OR PATRONESS PINS	
Nugget border.....	4.50
Crown set pearl.....	14.25
Close set pearl.....	11.75
Music Award Charm, sterling.....	2.00
18" sterling neck chain.....	1.00
Music Award Charm, 1/10K gold filled.....	3.00
18" 1/20 10K gold filled chain.....	1.50
18" 10K gold chain.....	3.50

GUARD PINS		
	Single Letter	Double Letter
Plain gold.....	\$2.75	\$ 4.25
Close pearl.....	5.50	9.25
Crown pearl.....	7.75	14.00

White gold guards:  
 Miniature cofa guard, 10K.....\$2.75  
 \$1.00 additional for plain guards.  
 \$2.00 additional for jeweled guards.

Orders for official insignia should be placed with Mu Phi Epsilon National Executive Office.  
 NOTE: The small size guards are no longer available.

10% Federal Tax must be added to the above prices, as well as any State Tax in effect.

Official Jeweler to  
 Mu Phi Epsilon

**L.G. Balfour COMPANY**  
 ATTLEBORO, MASSACHUSETTS

In Canada . . . L. G. Balfour Co., Ltd.  
 Toronto and Montreal



### Balfour Favor Catalog

A special new catalog of party favors illustrates many new and exclusive Balfour favors in a wide price range.

Write for FREE copy indicating your chapter office.

Available to chapter officers and social chairmen.

### The Balfour Blue Book

A completely new catalog presenting in color a special selection of rings and fine gift items.

Select your gifts for all occasions as well as personal accessories from this beautiful catalog.

L. G. Balfour Co. ....Date  
 Attleboro, Mass. .... Mu Phi Epsilon  
 Blue Book  
 Ceramic Flyer  
 Knitwear Flyer  
 Paper Napkin Flyer  
 Favor Catalog (note chapter office)

Name.....

Address.....

1958-59  
 Calendar

## ALUMNAE CHAPTERS

N.E.O. Address: 1139 N. Ridgewood Dr., Wichita 14, Kans.

National Editor Address: 532 S.E. Fifth, Apt. A, Minneapolis 14, Minn.

**SEPTEMBER:** President: Call meeting of chapter officers to make plans for year. Corresponding Secretary: Report immediately to N.E.O. address changes of all officers and chapter members, on official form. Order supplies for year. Send name and address of chapter Magazine Chairman to Marjorie Bernat, 785 Pierce, Birmingham, Mich.

**NOVEMBER 1:** DEADLINE for ordering stationery for fall delivery.

**NOVEMBER 13:** Founders Day, Treasurer: Send voluntary contribution of 55c for each chapter member to N.E.O., enclosing Form No. 3.

**DECEMBER 1:** President: Write fall report letter to National Third Vice President with a copy to your Province Governor.

**JANUARY 15:** Treasurer and Corresponding Secretary. DEADLINE for sending annual national taxes (\$5.00 ea.) to N.E.O., enclosing 2 copies of Combined Forms No. 1 and No. 2. Renew TRIANGLE subscriptions for chapter members on that form also.

**FEBRUARY 1:** Contestants, Musicological Research Contest. Send notice of your intention to enter contest to Jane McCluggage, 3885 Quay, Wheatridge, Colo.

**FEBRUARY:** Elect new chapter officers. (Officers do not need to be installed until May.)

**MARCH 1:** DEADLINE for returning to N.E.O. on official forms, 8 copies of list of new chapter officers. NO EXCEPTIONS.

**MARCH 15:** Manuscripts for Musicological Research Contest due at office of: Jane McCluggage, 3885 Quay, Wheatridge, Colo.

**APRIL 1:** DEADLINE for ordering stationery for spring delivery.

**APRIL 1:** President: Write spring report letter to National Third Vice President with a copy to your Province Governor.

**MAY 31:** Before this date, send all chapter contributions for national projects to N.E.O.

**JUNE 1:** President, Corresponding Secretary and Treasurer. DEADLINE for returning annual reports to N.E.O.

**JUNE 1:** Manuscripts for Original Composition Contest due at office of: Glorian Butler Thomas, 326 Walhalla Road, Columbus 2, Ohio

**HISTORIAN:** The following are deadline dates for TRIANGLE materials. Send newsletter and other materials at least once during year to National Editor.

December 1—For Winter issue of THE TRIANGLE required newsletter due.  
 March 1—For Spring issue of THE TRIANGLE.  
 August 1—For Fall issue of THE TRIANGLE.



# The Mu Phi Epsilon Creed



*BELIEVE in Music, the noblest of all the arts, a source of much that is good, just, and beautiful; in Friendship, marked by love, kindness, and sincerity; and in Harmony, the essence of a true and happy life.*

*I believe in the sacred bond of Sisterhood, loyal, generous and self-sacrificing, and its strength shall ever guide me in the path that leads upward toward the stars.*

—RUTH JANE

KIRBY,  
Omega