

V. 54 #1

SUMMER  
1959

The



# Triangle

of MU PHI EPSILON

1959-60  
Calendar

# COLLEGIATE CHAPTERS

N.E.O. Address: 1139 N. Ridgewood, Wichita 14, Kan.

National Editor Address: 532 S.E. Fifth Street, Apt. A, Minneapolis 14, Minn.

**FIRST WEEK OF SCHOOL:** President: call meeting of chapter officers to inspect chapter equipment, give chapter officers materials sent from N.E.O., and make plans for the year. Corresponding Secretary: Return official form *immediately* to N.E.O. giving address changes of chapter officers and other chapter members. Order supplies for the year, Form No. 3. Send name of Chapter Magazine Chairman to Katharine Shirley, 21 Kent Road, Upper Darby, Pa.

**NOVEMBER 1:** Deadline for sending in fall stationery orders.

**NOVEMBER 13:** Founders Day. Treasurer send voluntary contribution of 56c per chapter member to N.E.O., enclosing Form No. 3.

**NOVEMBER 15:** Treasurer and Corresponding Secretary. DEADLINE date for mailing fall national taxes to N.E.O. Send check and 2 copies of Form No. 2. Send TRIANGLE subscription renewals to N.E.O., using Form No. 1.

**DECEMBER 1:** President: Send fall report form to your Province Governor concerning chapter activities and problems. Send copy to National Fifth Vice President. Set date for Work Party, write District Director.

**FIRST MONTH OF SECOND SEMESTER OR NO LATER THAN FEBRUARY 28:** Elect new chapter officers. Corresponding Secretary: Send names and addresses of new officers immediately to N.E.O., returning eight copies of official forms. NO EXCEPTIONS. Chapter: Plan Work Party on date set with District Director.

**MARCH 1:** Treasurer and Corresponding Secretary: DEADLINE for paying spring taxes to N.E.O. Send check and two copies of Form No. 2. Send additional renewals of TRIANGLE subscriptions to N.E.O., using Form No. 1.

**APRIL 1:** DEADLINE for sending glossy, and official form of chapter Convention Delegate to Esther Wiedower, 737 S. Hill Street, Los Angeles, Calif.

**APRIL 1:** DEADLINE for ordering stationery for spring delivery.

**APRIL 1:** President: Send spring report form to your province governor, with copy to National Fifth Vice President.

**MAY 31:** Before this date send all contributions for national projects to N.E.O.

**JUNE 1:** President, Corresponding Secretary, Treasurer and Faculty Adviser: DEADLINE for returning annual reports to N.E.O. on official forms.

**HISTORIAN:** The following are deadline dates for TRIANGLE materials. Send newsletter and other materials at least once during year to National Editor.

August 1—For Summer issue of THE TRIANGLE

October 1—For Fall issue of THE TRIANGLE

December 1—For Winter issue of THE TRIANGLE

March 1—For Spring issue of THE TRIANGLE. Deadline for required newsletter.

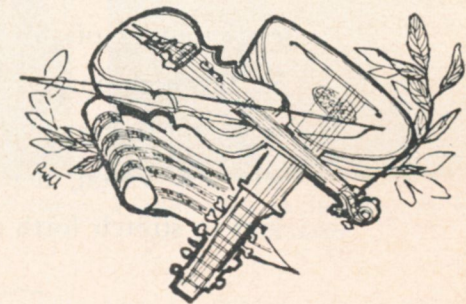
# The Triangle

## of Mu Phi Epsilon

SUMMER • 1959

# MΦE

	Page
Founders Day Message.....	2
About Silliman University.....	3
Stained Glass Artists .....	8
Wilhelmina Harbert Honored .....	10
Our First Aspen Scholarship Winner.....	12
Meet Our Award Winners for 1959.....	15
Announcing U.S.C. Mu Phi Epsilon Scholarship.....	19
Seattle Alumnae Honor George F. McKay.....	20
Alumnae Chapters present benefit concerts.....	21
Mu Phis in Notable Firsts.....	22
More Jewels in Our Crown.....	25
Announcing MΦE Music Therapy Scholarship.....	27
Let's Visit Friendship Corner.....	28
Pride of Mu Phi Epsilon.....	30
Here 'n There .....	32
Of Honors and Distinctions .....	33
We Welcome Them to Our Official Family.....	36
In the Picture Parade.....	38
In Memoriam .....	40
The Sounding Board .....	41



RUTH HAVLIK, Editor

THE TRIANGLE of Mu Phi Epsilon is published four times yearly, in Summer, Fall, Winter and Spring, at 2642 University Ave., Saint Paul, Minn., by Leland Publishers, Incorporated (The Fraternity Press), for Mu Phi Epsilon, National Music Sorority. The subscription price is \$1.50 per year. Deadlines for copy: Materials for publication must reach the Editor, 532 S.E. Fifth St., Apt. A, Minneapolis 14, Minn., before the 1st of August, October, December and March. Second class postage paid at Saint Paul, Minn.

POSTMASTER: Send all changes of address to 1139 No. Ridgewood Drive, Wichita 14, Kansas.

VOLUME 54

SINGLE COPIES—40c

NUMBER 1

# FOUNDERS

# DAY

# MESSAGE

# 1959

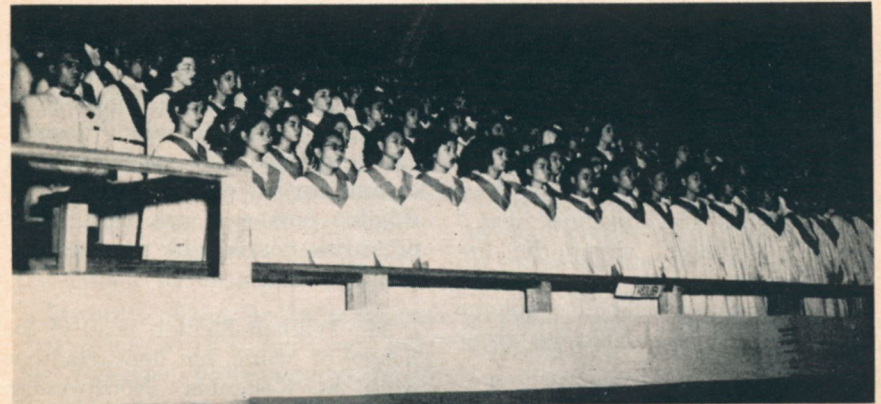
ON November 13, 1903, MU PHI EPSILON, national music sorority, was a dream in the minds of our Founders, of a new life for music students based on mutual help. Such a worthy purpose quickly attracted followers, so that today, that dream is a reality, and MU PHI EPSILON is known in schools and communities of this country and of the world for this high purpose of help to others. . . . Let us now and forever live that dream, that still gives us "new vision, new stimulus to work, to do, and to stretch forth a helping hand to others."

*Roslie V. Speciale*

National President



# Our Help at Silliman is Well Used



*A Silliman festival chorus in the gymnasium.*



*Scene from "Love of Four Chicos" original one-act opera produced by the school of music.*



*A piano class at Silliman. A. Faurot, teacher.*

. . . and

# Still Vitally Needed

△ MU PHI EPSILON has for several years been contributing to the work of Silliman University which is located on the Island of Negros in the Philippines.

It was Eleanor Wilson, then President of MΦE, who suggested that I visit Silliman when recently I accompanied my husband to take up temporary residence in Manila. It was in response to the cordial invitation of Mr. William Pfeiffer, head of the Silliman School of Music, to spend the weekend of March 2 on their campus at Dumaguete that I learned first-hand about the fine contribution to music being made under excessively difficult conditions by a talented and dedicated group of musicians.

Mu Phi Epsilon is well known to the people of Silliman because of the greatly appreciated assistance it has provided, and Mu Phi Epsilon is represented on the faculty in the person of Mimi Palmore, one of the leading spirits in building the School of Music. One of the first of my many surprises at Dumaguete, however, was to learn that I was the first member of MΦE within the memory of the faculty ever to visit their campus. People interested in music education who tour this part of the world without visiting Silliman are missing something important.

A Philippine Air Lines 4-motored tubro jet will take you from Manila to Cebu, the metropolis of the Visayas in about an hour, and another flight of 40 minutes in a two-motored plane will land you in Dumaguete where, if you are lucky as I was, Mr. Pfeiffer and members of his staff will meet you, and you will

have begun a stimulating experience.

Silliman University, established in 1901 by a Presbyterian missionary couple, has a present enrollment of 2,500 students ranging from kindergarten through four years of college and graduate school. The low tuition and the opportunities for part time work, together with the continuity of grades from beginning to completion of advanced degrees, make possible the realization of dreams for an education for many Filipino boys and girls who would otherwise not be able to complete their education.

Mr. William Pfeiffer, head of the School of Music, has done graduate work at Columbia, Northwestern and Rutgers, and has been on the faculty of the University of Wisconsin and Westminster Choir School. The able assistant to Mr. Pfeiffer is Mrs. Pfeiffer, an excellent musician.

The music faculty consists of 8 teachers, 3 of whom are Americans and 5 Filipinos. One of the faculty members is a Silliman graduate—Ruth Imperial, who has an M.A. from Union Theological Seminary, and teaches organ, piano, theory and choral conducting.

Other graduates in music who are making distinguished records include Angelita Layague, who is a Juilliard scholarship sophomore, and Priscilla Magdamo, who has made the only authoritative collection of Visayan folk music (published in six volumes) and has since completed one semester at Yale and one semester at the University of Indiana on a Fulbright-Smith-Mundt scholarship.

Since the innate musical ability of the average Filipino (natural rhythm, accuracy of pitch, tone quality, general aptitude) is great, the music teachers deplore the fact that students from the provinces have had, in most cases, absolutely no musical training. Most of them can sing in unison, but few of them have ever seen a written note, and few have had any instruction from a teacher with previous music training. The reason is, of course not hard to find. There is little or no music published in the Philippines; written music is practically unobtainable in the provinces; and there are few, pitifully few, public school music teachers.

Members of the faculty point out that as late as 1956 there were only two full-time, professionally-trained music teachers in the public elementary and high schools of Manila, the capital, and by all odds, biggest (Population: 2 million) city of the archipelago.

The lack of printed music is one of the painful handicaps of the people at Silliman. It is an unhappy fact that students simply cannot obtain music and must do all of their work with music that is loaned to them by the school. Acquisition of music by the students is negligible because it is not on the market locally; to obtain it from abroad takes many weeks; because of the cost of imported music, the typical student at Dumaguete could not afford it anyway.

It is partly because of this great need for music that Silliman is so genuinely grateful to Mu Phi Epsilon. Mr. Pfeiffer said, "It is almost impossible to imagine how we could have carried on a teaching program of acceptable quality in the School

of Music had we not received so much assistance in the form of printed music from Mu Phi Epsilon."

Music students at Silliman have impressive opportunity for performance. The active music organizations include a 20-voice Folk Art Ensemble; two 70-voice choirs, each of which sings for one service per week; a 60 to 70-voice high school choir; 35-voice glee club (campus choristers); an R.O.T.C. band; and a 40-piece student and faculty orchestra.

Among the selections performed by one or more of the above groups in recent months are *The Seven Last Words* by Dubois; *Elijah* by Mendelssohn; and St.-Saens *Christmas Oratorio*. They have also performed many numbers based on researches in native music, including *Visayan Suite* by Peregrino T. Aledia, member of the faculty and head of Theory and Composition; and have presented some 50 concerts intended to make the people of the Philippines aware of the rich sources available to them in the collected folk music of the Visayas.

An excellent opportunity for musical experience is afforded by the university radio station which is maintained by the Philippine Federation of Christian Churches, in cooperation with the University. The radio station is not a property of the School of Music, but its Director of Music is Mimi Palmore, and recitals of students and faculty, individuals and groups, are broadcast each week.

I have already alluded to one of the outstanding contributions of Silliman University school of music. It is a research project in native Visayan music made with the assist-



Violin class at Silliman.



The Silliman orchestra.

ance of a grant in aid from a large foundation in the United States. Two research workers were kept in the field for 18 months making recordings and gathering data. Thus far, over 700 songs of the Visayan Islands (central part of the Philippine archipelago), plus many hours of recording of non-Christian tribal music have been accumulated, classified and made available for music students. This work constitutes a vast treasure of source material for composers, and already 20 choral arrangements have taken their themes from this collection. Eliseo Pajaro, a composer at the University of the Philippines, based his *Himig Bisaya*, a suite for solo voice and piano, on three songs recorded by these researchers.

On the record, what staff members and students at this music school are doing seems big enough, but viewed in perspective with what they have to work with, it appears monumental.

Music instruments are greatly needed because new ones in the Philippines are hard to get and impossibly expensive for a typical student. Instruments simply must be supplied by the school, and there is not money to buy them. A magnifi-

cent contribution would be to collect some of the used instruments lying around in U. S. attics and send them to Silliman.

The school has access to a small church organ, but it is not available for class use and practicing. At the time I was there, they were in distressing need of 2 oboes, a baritone horn, an A and B flat clarinet.

They need scholarships for outstanding students; student aid loans and work opportunities. They need endowment of a chair of composition for a composer in residence to capitalize on some of the excellent ideas developing from the current researches.

Mr. Pfeiffer and his staff believe, with many other thoughtful people throughout the world, that international interest in and creation of music forges a bond between peoples that makes for peace and understanding.

They also believe it important that Filipinos be provided with the tools and then allowed to develop their own wonderful aptitude for music. One of the faculty people expressed it thus: "The School of Music must build with the tradition of the country an indigenous music along with European and American

music. National self-respect is stimulated when free people offer something new and worthwhile to the world."

What I saw and heard was a revelation to me of how much can be accomplished by earnest and capable people with inadequate facilities and funds. The contributions thus far made by Mu Phi Epsilon have been splendidly used. Their work is only begun and their needs are so great as to discourage teachers of ordinary enthusiasm, but I saw no evidence that this group of teachers is likely to become discouraged. I left their campus with great confidence that when in good time more contributions come, they also will be well used.—MARGARET ARNESON.



Peregrino T. Aledia, playing the bassoon bought from Mu Phi Epsilon funds.

---

## About the Author

Margaret Arneson was initiated into Mu Beta Chapter at Washington State University, Pullman, Washington. She graduated with majors in Piano and Music Education. In 1938 Margaret received her M.A. degree with a major in Conducting. She was head of the Music Department at Lincoln High School, Tacoma, Washington, for 25 years. Her outstanding choir at this school performed at many regional music conferences and at the National Conference in St. Louis in 1938. She was also regional choral adjudicator for the Northwest Region. Margaret was married to Gus Arneson in 1955 and went with him to the Philippines two years ago, where he is a technical adviser to a Philippine firm developing national resources.

---

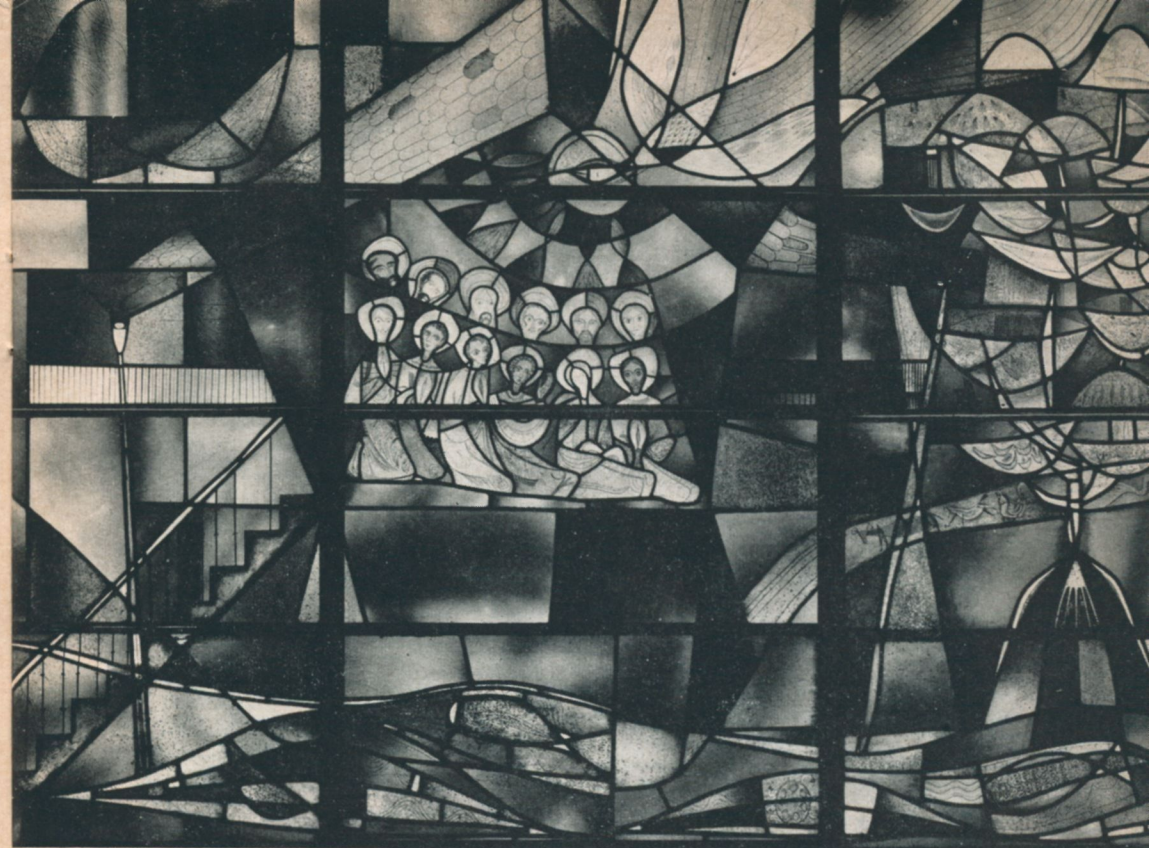
# STAINED GLASS ARTISTS

△ LAST APRIL the St. Louis Alumnae Chapter had the rare privilege of being permitted to tour the stained glass studio of Emil Frei, husband of our own member, Alice Betz Frei. The tour was made on the day of our regular meeting, and had been planned some months before by Dorothy Smutz, our program chairman at that time. Since Mu Phi are well aware of the use of music in the churches, it was thought to be of great interest to study another facet of beauty in our houses of worship.

As far as is known, colored glass for windows was first used in England in the latter part of the seventh century and was restricted to cathedral windows. The use of stained glass reached its peak in the 11th, 12th and 13th centuries. For hundreds of years, churches were the most influential patrons of all the arts, and in some of the medieval cathedrals of Europe are windows

of great value, which were the designs of great artists and were finished with a perfection which has not been equaled until the present time. Then a period of austerity began, and music and art declined. Now the churches are again encouraging all arts, and today the United States leads the world in the manufacture of stained glass.

Emil Frei's father, Emil Senior, started his stained glass studio in St. Louis about 60 years ago. He came from Germany where he had learned the craft. His work was conventional, but when Emil Jr. took charge he began experimenting in contemporary work. He went abroad several times to study some of Europe's ancient stained glass, and has given numerous lectures all over the country. His firm now leads in contemporary work, and its stained glass windows are to be seen in churches in almost every state in the union. In two large St. Louis



*The window for the First Methodist Church in New Haven, Indiana, called "The Upper Room."*

churches, St. Francis Xavier Catholic Church and St. Michael and St. George Episcopal Church, the firm installed the medieval type of windows, but in St. Ann's Catholic Church of Normandy, St. Mark's Episcopal Church in St. Louis, and St. Peter's Catholic Church in Kirkwood the windows are of contemporary design and caused so much discussion at the time they were installed that articles about them were published in national magazines. The Frei Company is now working on windows of contemporary design for St. Luke's Methodist Church in Oklahoma City, one of which is 24 feet high and a still larger one is yet to be made. These windows are made for both exterior and interior effect,

as are also the ones installed recently in St. Paul's Episcopal Church in Peoria.

Jules Gewinner, husband of our own member, Lucille Cook Gewinner, is vice president of the company and has been associated with Emil Frei and his work almost all of his life. He it was who escorted our group through the shop, explaining the work in detail.

The first step in the making of ornamental windows is the design. A small sketch is made, which is then enlarged to the full size of the window and properly colored. The pattern, or working drawing, is cut into sections, and pieces of glass are cut out like the sections in the pattern, each one selected of the chosen color.

When a figure, a face, a flower, a monogram or some other design is to be painted in the window, the designs are applied to the pieces of glass with a special pigment, after which the glass pieces are taken to the kiln and fired. In joining the pieces together, a frame of lead is made for each piece and is grooved on each side. As each piece is leaded it is placed over the pattern until the window is assembled as a whole.

Six artists work in this shop, and one might call them "craftsmen in living light." Since the treasures of time are unlimited, many more windows will be made for future generations. The arts go hand in hand, and the St. Louis Alumnae members are grateful for this opportunity to see behind the scenes into the making of another form of beauty in this world.—RUTH ROGERS JOHNSON, *Historian*.

## WILHELMINA HARBERT HONORED



*Dorothy Busher, Wilhelmina Harbert and Jane Roberts*

△ WILHELMINA HARBERT was honored at a reunion held on April 25th by Mu Eta Chapter and the Stockton Alumnae Chapter in Jackson Hall of the Unitarian Church in Stockton, California. She is retiring from her position as professor of public school education and music therapy at College of the Pacific. In 1932 she was initiated into Mu Eta, and joined the Pacific faculty in

1937; in 1940 she became faculty adviser to the collegiate group. Nationally known as a pioneer in the field of music therapy, Wilhelmina has directed the activities of Mu Eta, counseled the coeds, and helped make scholarship appointments. In the line for the reception were Margaret Cake, general chairman for the event; Wilhelmina Harbert; Jane Roberts, Stockton Alumnae president; and Dorothy Busher, Mu Eta President. Pouring during the afternoon were Miriam Burton; Mrs. J. Russell Bodley, wife of the Dean of the College of the Pacific Conservatory; Miss Rachael Keniston, Mrs. Harbert's sister; and Virginia Short. Letters were sent to more than 300 Mu Eta members and many letters and cards of greeting were received in response which were put into a memory book and presented to the guest of honor. A loan fund in Wilhelmina Harbert's name to assist Mu Eta girls was set up by the two chapters and contributions amounting to \$435 were sent in by the many members invited to the gathering.



*Members of the Mu Phi Epsilon National Council who met in June at Santa Monica are: seated, Helen Purcell Maxwell, fourth vice president, Glorian Butler Thomas, second vice president; Rosalie Speciale, president, Eloise Hill, first vice president; Virginia Porter Fiser, secretary-treasurer. Standing, Hilda Humphreys, fifth vice president; Jane Hinkle McCluggage, third vice president and Ruth Havlik, editor.*

### *Music . . .*

*How many of us ever stop to think  
Of MUSIC as a wondrous magic link  
With GOD? Taking sometimes the place of prayer,  
When words have failed us 'neath a weight of care,  
MUSIC, that knows no country, race or creed,  
But gives to each according to his need.*



About  
the First  
Winner  
of our  
Aspen Scholarship

Maribel Meisel as "Frasquita" in *Carmen*.

△ MARIBEL MEISEL, Mu Xi chapter initiate, is a native of Fairmont, West Virginia, where she participated in musical activities in school and church. She spent her first two college years at Cottey College, Nevada, Mo., where she took part in chorus, orchestra, operetta, and was a member of Mu Sigma Epsilon, junior college music honorary. After receiving her Associate in Arts Diploma from Cottey, she attended Oberlin College, where she received her B.A. in Sociology in 1957. While at Oberlin she was a member of several orchestras and the Musical Union. During her senior year here she became interested in singing. Maribel had played both piano and cello, but it was her voice

that brought her to music as a life work. In the summer of 1957, she came to Aspen where she studied voice with Jennie Tourel in addition to studying cello. After working in the Y.W.C.A. in Elgin, Ill., for a year and studying privately in Chicago at the American Conservatory with Frances Ernest, Maribel decided to enter the Conservatory as a degree course student. During the summer of 1958 she was a member of the Opera Chorus at Chautauqua, New York. This past winter she was a member of the Bach Choir of Evanston and was "Frasquita" in the Opera Theatre of Chicago production of *Carmen* in May.

This summer at Aspen she has been a member of the Opera Workshop and participated in productions of *Don Pasquale* and *Hansel and*

*Gretel* (Act II) for their Opera Studio Evening. As a member of the Aspen Music School Chorus, she participated in several of the Festival Programs in the tent. In the fall she will return for her senior year at the Conservatory. We wish Maribel much success and pleasure in the making and sharing of music.

c/o Aspen Music School  
Aspen, Colorado  
June 30, 1959

National Executive Office of Mu Phi Epsilon  
1139 North Ridgewood  
Wichita 14, Kansas

DEAR SISTERS IN MU PHI:

Special Greetings to you from Aspen, the cultural center of the West. My thanks certainly go out to Mu Phi Epsilon for making it possible for me to come to Aspen again and to be a part of the marvelous musical experience available here.

I have only been here a little over a week and I have attended three concerts, two lectures, recitals, not to mention my classes in diction, acting, vocal repertoire, chorus rehearsal, and my sessions of Opera Workshop, which is my major concentration here.

I have been assigned the role of Gretel in the second act of *Hansel and Gretel*, which will probably be performed the fifth week of the session. It certainly is inspiring to work among so many talented students and teachers and it presents quite a challenge to a person seriously interested in music.

Before I leave Aspen I hope to take some voice lessons with either Miss Tourel or Miss Olga Ryss, who teaches in conjunction with her. Mr. Singer found me an excellent part-time job selling concert tickets on week-ends at the Hotel Jerome here, which will pay for the lessons in addition to my Opera Workshop studies.

Of course all is not work here. I have enjoyed exchanging views with all the students here from different parts of the country and have also enjoyed the wonderful Colorado scenery. Especially enjoyable was the ride on the ski lift, which we all took on Monday.

Again, the part that Mu Phi has played in enabling me to come here this summer is very much appreciated. I hope that I shall be worthy of this honor and I shall try to make this summer one of the most worthwhile I have ever spent.

Sincerely,  
MARIBEL MEISEL





## MEMBERS AT ASPEN



Front row (l. to r.) Jeanne Pachaly (student of Jennie Tourel, voice); Carol Crichton (Fulton, violin); Myrra Mosher (Totenberg, violin); Anna Grossman (member of Aspen Festival Orchestra, violin); Maribel Meisel (Opera Workshop). Left to right (back row): Katherine E. Burke (Goldberg, violin); Margaret Allan (Babin, piano); Mary Lee Scott (Fulton, violin); Sharon Davis (J. Graudan, piano); Rosemary McCaul (Goldberg, violin). Besides Anna Grossman, Carol Crichton and Myra Mosher also perform in the Aspen Festival Orchestra. Rosemary McCaul is a pledge at Concordia College, North Dakota.

### Great Thoughts:

There was a child went forth every day,  
And the first object he look'd upon,  
that object he became,  
And that object became part of him  
for the day or a certain part  
of the day.  
Or for many years or stretching  
cycles of years . . .

—WALT WHITMAN

"Soft tones  
Of music,  
Words of poetry  
And colors,  
Are the fingers of God  
Which touch the hearts of men"

—FLORENCE HUTCHINGS, Atlanta.

△ EACH YEAR Mu Phi Epsilon presents awards and honorable mentions to its outstanding members and chapters. Inasmuch as so many of our collegiate members distinguish themselves on campus and in their communities, it is often difficult to choose the one winner and the traditional honorable mention from each province. We are pleased to present to you the winner and honorable mentions of the Senior Achievement Award for 1959:

NANCY THOMAS FARRAND, Gamma Chapter, is the winner of the Senior Achievement Award. Nancy has held offices of Vice Presi-



Nancy Farrand

dent, Pledge Class President, MΦE Radio Program Performer, and has performed for Mu Phi Epsilon activities.

Among campus honors and activities are the following: Member of Music Literature Honors Program; Phi Beta Kappa (senior year); Phi Kappa Phi (junior year); member of University Symphony in the viola section; the Bach Choir; the Michigan Singers; the Gilbert and Sullivan Orchestra; the Musket Orchestra; and Opera Orchestra. She received the Oreon E. Scott Award in her freshman year and the Theodore Presser Award in her senior year. Nancy is a performer in recital ensembles, and a James B. Angell Scholar (an All-A record for two consecutive semesters). In addition to these outstanding activities, she has had the responsibility of programming six hours of radio for WUOM each week and is soloist for First Congregational Church Choir in Ann Arbor. Nancy is a "Mu Phi Daughter," her mother being Glorian Butler Thomas, National Second Vice President.

THEO RAYBURN, Tau Chapter, graduated from University of South Dakota *summa cum lauda* in June. She served Mu Phi Epsilon as Historian and President (for two years) of Tau Chapter. Campus activities include: Mortar Board; Pi

Meet Our Award  
Winners for 1959



Theo Rayburn



Marie Holifield

Beta Phi; Guidon (Junior women's honorary); Alpha Lambda Delta; University Choir accompanist; MENC student chapter president; AWS Legislative Council; A.G.O. Student group; Lutheran Student Association; Madrigal group; Convocation Committee. Theo received the Alpha Lambda Delta scholarship award for maintaining a 3.5 average for all four years of school. She was organist at First Baptist and Trinity Lutheran churches during her school years and was choral accompanist for three summers at National Music Camp, Interlochen. Theo presented organ recitals during her freshman and junior years and piano recitals in her sophomore and senior years. She has appeared as accompanist for student and faculty recitals and was music delegate to the District Conference in Lincoln last spring.

MARIE HOLIFIELD, Epsilon Kappa Chapter, has held the offices of Alumnae Secretary, chorister, and

was a member of the chapter bulletin board committee. Campus activities include: Angel Flight, ROTC Honorary Girl's Auxiliary with membership in its singing group called "Angel-aires"; Military Ball Queen; Chairman of MΦE and ΦMA Greek Sing; she conducted all musical performances throughout her junior year, including trips to Sunset Haven Rest Home, Christmas Caroling and program for Mme. Nadia Boulanger; she was elected to Sphinx Club (honorary for outstanding senior men and women), Mortar Board, Phi Kappa Phi, chairman of Southern Illinois University's Honor Day, and was Homecoming Queen.

Marie was musical representative at the District Conference in her area, represented Epsilon Kappa at the Spring Leadership Conference, and participated in MΦE recitals as part of a two-piano team.

Among honors received are the Normal School Scholarship in her

freshman year, winner of the Presser Foundation Scholarship, she was chosen the most outstanding junior music student at S.I.U., and performed a piano work for Mme. Boulanger when she visited the campus. Marie was finalist in the piano division of the St. Louis Symphony Young Artist Contest. She was accompanist for the Opera Workshop, sang in the University A Capella Choir, Madrigal Singers, and S.I.U. Oratorio Society, and was also a member of the S.I.U. Symphony and Sinfonietta.

LETA NELLE THOMASON, Epsilon Epsilon, graduated from Texas Christian in June with a double major: Bachelor of Music and Bachelor of Music Education. Chapter offices held include Alumnae Secretary, Recording Secretary and President. During her term as president the chapter more than quadrupled in membership, the treasury rose from \$5.00 to \$100 and the chapter established a scholarship fund which is still growing.



Leta Nelle Thomason



Ann M. Blake

Campus activities include: MENC Student Chapter secretary; Fallis Players; Alpha Chi; Select Series Committee; University Symphony with which group she appeared as soloist in 1958 and also served as their secretary during that year; Horned Frog Band; *Who's Who in American Colleges*; Frogettes (freshman year); Leti (sophomore organization). Leta taught preparatory flute at T.C.U. for 2½ years.

Leta won the schoolwide Research Paper Contest in 1955. She has played in the Fort Worth Symphony since its organization in 1957, the Fort Worth Opera Association Orchestra, Cecilian Club, and was soloist with A F of M orchestra on a Project Concert in June 1959. Leta also represented T.C.U. as recitalist at the Texas Music Teachers Association Convention at Houston in June.

ANN M. BLAKE, Psi Chapter, is an organist, pianist, and accompanist. She served in capacities of vice

president, president (delegate to Detroit convention), served on various committees such as the chapter drive for Music for the Far East and poster making. Ann was a member of the Women's Glee Club and organized their tour of Western Pennsylvania; she was a member of the Mixed Chorus, Chapel Choir, and played viola in the orchestra. She is a member of Delta Zeta and was their panhellenic council representative, she served as secretary and president of Kappa Chi Lambda; Alpha Lambda Delta (freshman women's honorary); Christian Association; A.G.O. student group which she helped to found on campus; member of the cabinet of University Players; representative to the Senate of Women's Student Government Association; cabinet member of the Student-Faculty Congress.

Prior to college, Ann gave four hour-long organ recitals in Westbury Methodist Church on Long Island and during her school years she was assistant organist in the Methodist Church Choir. She gave her professional senior organ recital this past spring.

**LAURA RHOADES**, Nu Chapter, has held the offices of Historian and President in her chapter. She has performed in numerous MΦE programs and has had compositions played on these programs. Her compositions have also appeared on the Creative Arts Program and other School of Music programs and she composed and directed the music for the University Theater production of "The Tempest" in the spring of 1959.

Laura has performed in school of music recitals and in the community as pianist, accompanist, organist and



Laura Rhoades

harpsichordist. She is a member of the Student Guild of A.G.O. and performed twice for the Eugene A.G.O. chapter. She was selected by the U of Oregon faculty as outstanding woman music student in her class each year and won the Associated Women Students Award for this. Laura also received the State Board of Higher Education and MΦE School Patroness scholarships and in her sophomore year appeared on the Honors Program for U of Oregon. She has been assistant organist at First Congregational Church in Eugene and also directed the Junior Choir there.

**BEVERLY COTTINGHAM**, Epsilon Omega, served as treasurer, chaplain and president of her chapter. She also took an active part in ushering at recitals and concerts, and singing at Letterman's Hospital and Laguna Honda Home. Campus activities include the presidency of the Roger Williams Fellowship, mem-

bership in MENC student chapter, National Educational Club. She won the Creative Arts Scholarship and the Mu Phi Epsilon Sacramento Alumnae Scholarship. Beverly is a church choir director, has appeared as alto soloist for Harmonizers and several church choirs, and gave her senior recital this past spring.



Beverly Cottingham

**COLLEGIATE CHAPTER SERVICE AWARD:** Xi Chapter. Honorable mention certificates were given to Alpha Alpha, Epsilon Eta, Phi Iota, Epsilon Xi and Mu Zeta.

**ALUMNAE CHAPTER SERVICE AWARD:** Seattle Alumnae. Honorable mention certificates were given to New York, Cleveland Heights, Des Moines, Indianapolis, Denver, and Los Angeles Alumnae chapters.

**ELIZABETH MATHIAS AWARD** went to Mu Epsilon Chapter for having the highest average for the year. Next in order were: Phi Omicron, Mu Kappa, Epsilon Xi, and Zeta.

**MARIE MORRISEY KEITH AWARD** was given to Epsilon Epsilon, for the greatest improvement in grade average over last year. Next in order were: Phi Iota, Mu Nu, Epsilon Zeta, Epsilon Gamma, and Mu Xi.

## Announcing the U.S.C. Cello Scholarship

The auditions for the cello scholarship given by the Los Angeles area chapters of Mu Phi Epsilon to the University of Southern California, will be held at Clark House, U.S.C., Saturday, December 19, 1959.

The judges: the String Faculty of the U.S.C. School of Music.

The scholarship is open to a woman under 30 years of age, who has high academic standing and who is eligible for admission toward a degree objective in the U.S.C. School of Music. Her performance ability must be outstanding.

The musical performance stipulations are: a Sonata and two contrasting movements of the Bach Suites.

Information may be obtained by writing the School of Music, U.S.C., University Park, Los Angeles 7, California.

## Seattle Alumnae Honor

### George Frederick McKay



George Frederick McKay

△ THE SEATTLE ALUMNAE CHAPTER of Mu Phi Epsilon paid tribute to Professor George Frederick McKay, for thirty years a distinguished member of the University of Washington music faculty, on April 17, in the music building on the campus. The retrospective concert of the composer's works was enthusiastically received by an audience of more than two hundred.

The concert of compositions for small ensembles and vocal groups

began with the "April Poem," composed in 1927, for flute, string quartet and piano. Also performed were "Six Robert Frost Songs" sung by Iris Jones; three children's songs sung by a children's chorus; "Missouri Harmony" for string ensemble, and *In Green Ways*, a suite for women's voices, directed by Miriam Terry. Professor McKay composed the *Suite for Eight Celli*, which was directed by Vilem Sokol, especially for this concert. The cellists included Eleanor Hale Wilson, Joyce Barnum, Carol Canfield, Judy Farrington, Eva Heinitz, Harriett Shank, Iris C. Smith, and Betty Swanson. Roberta Stanley Diesner, pianist, presented *Dance Suite No. 2*.

A commentary on Professor McKay's career and methods was offered by a School of Music colleague, Professor Hazel Gertrude Kinscella.

This was the final program of the scholarship benefit series for the year.—JANET POHLMAN SAWYERS, *Historian*.

*We are the music-makers*

*We are the dreamers of dreams,  
Wandering by lone sea-breakers,  
Sitting by desolate streams.*

—A. O'SHAUGHNESSY

## ALUMNAE CHAPTERS PRESENT BENEFIT CONCERTS

### BALTIMORE ALUMNAE

△ THE BALTIMORE ALUMNAE CHAPTER presented William Kroll, violinist, and Julio Esteban, pianist, in a benefit recital for the chapter's scholarship fund. The program was given in the Concert Hall of the Peabody Conservatory of Music on Sunday evening, April 19, 1959.

Mr. Kroll, founder of the well-known Kroll Quartet, used his exquisite "Ernst" Stradivarius in the playing of the three sonatas of Mozart, Beethoven and Prokofieff. His able collaborator was pianist Mr. Esteban, a member of the Peabody faculty and former head of the Conservatory of Music of the University of Santo Tomas in Manila (now a patron of the Baltimore Alumnae Chapter).

To quote the next morning's reviews: "The evening reached its peak in a masterful presentation of one of this century's most appealing works, and one of its finest—Prokofieff's *Sonata in D Major*. It is sensitive music but in a masculine, outgoing way. This very character of the work suited the style of last night's players perfectly, and their empathy with the sonata was complete." "The entire evening was 'out of the top drawer' in chamber music."

Because of the graciousness of these two artists in contributing their talents, the Baltimore Alumnae Chapter was able to once again give

their annual \$250.00 scholarship to Peabody Conservatory.

Following the concert, a delightful reception for the two artists was presented by the patron group, with Mrs. Paul Taylor and Dr. Lubov Keefer as hosts.

### ROCHESTER ALUMNAE

△ ROCHESTER ALUMNAE CHAPTER presented Jeffrey Hollander, pianist, in the third Marion Weed Scholarship Benefit Recital, on June 10, 1959, at Kilbourn Hall at the Eastman School of Music. A pupil of Jose Echaniz at the Eastman School, Jeffrey Hollander is a junior at the school. He was the youngest scholarship winner in the preparatory department of the Eastman School of Music, won the McCurdy scholarship, and is a holder of the Rochester National Scholarship. He has been piano soloist with the Eastman School orchestra and the Rochester Civic Orchestra in addition to his solo appearances. He recently was awarded first place in the nation in the junior collegiate division of the national biennial piano recording festival.

The program included Beethoven's *Sonata in E minor*, Opus 90; Chopin's *Sonata in B minor*, Opus 58; "Andante Spianato and Grande Polonaise Brillante, Opus 22," Chopin; "Evocation," Albeniz; and "Mephisto Valse," Liszt.

Marion Weed, in whose memory



Jeffrey Hollander, Mildred Stalker, president, Rochester Alumnae, and Jose Echaniz

these concerts are given, was a native of Rochester and became internationally famous as an operatic soprano. A pupil of the great Lilli Lehmann, with whom she studied in Berlin, she was a member of the Metropolitan Opera Company for five years and sang the role of "Kundry" in the first performance of *Parsifal* in New York City. She sang at the Bayreuth Festivals and traveled throughout the world as concert performer and operatic guest artist. When the Eastman School of Music opened in 1921 she joined the faculty as operatic coach and teacher of German diction, and later became Dean of Women. She was a charter member of Rochester Alumnae Chapter.

## Mu Phi in Notable Firsts



Emma Lou Diemer

△ EMMA LOU DIEMER, Mu Phi Epsilon composer, is the only woman among twelve young American composers to be awarded fellowships to serve in twelve different high school systems during the coming school year under a Ford Foundation grant. These awards are the first in a two-year series being supported by the Foundation. The National Music Council is associated with the Foundation in the administration of these fellowships.

The fellowships were awarded on the recommendation of a panel of musical leaders from a list of 123 applicants. These composers, ranging in age from 23 to 35 years of age, will write music for performance by the high school orchestras, bands,

choruses, and other musical groups. Individual stipends amount to \$5,000 plus dependency allowances. The purposes of the project are to relate composers to the musical life of communities and to expand the repertory of secondary school music throughout the United States. W. McNeil Lowry, director of the Foundation's program in Humanities and the Arts has said that "the school systems selected have demonstrated outstanding musical quality through a well-balanced program of musical organization." Emma Lou will take up residence in the school system of Arlington County, Virginia, in September.

The committee which reviewed the applications of composers and the qualifications of school systems was composed of the following: Norman Dello Joio, chairman; Jacob Avshalomov, conductor of Portland, Oregon, Junior Symphony; Oliver Daniel, Director, Contemporary Music Projects for BMI; Vittorio Giannini, Juilliard School of Music; Howard Hanson, Eastman School of Music; Wiley Housewright, Florida State University; George Howerton, Northwestern University; Vanette Lawler, MENC; Robert Marvel, State University of New York (Fredonia); Peter Mennin, Peabody Conservatory; Douglas Moore, Columbia University; James Neilson, Oklahoma City University; Ralph Rush, University of Southern California.

*Emma Lou Diemer was initiated into Mu Delta Chapter. She received her training at Central Missouri State College and Yale University, receiving her Master's degree in composition with honors from the latter school. She studied in*

*Brussels, Belgium, on a Fulbright Scholarship during the year 1952-53. During the season of 1955 she was the first feminine composer to achieve the distinction of being selected by the Louisville Symphony orchestra for four performances of her original composition, Suite for Orchestra. She was one of ten young composers to be selected for this honor, and this was the second year of these awards.*

## MARJORIE GORDON



△ RESIDENTS OF DETROIT have had a unique cultural experience this past spring. "Detroit Adventure in the Arts" was organized by Wayne State University, The Detroit Public Library, The Detroit Institute of Arts, and fifteen other cultural and educational organizations in connection with the Central Business District Association. Producer and director of the spring music festival which was a part of this Adventure in the Arts, was Marjorie Gordon, leading soprano of the New York City Opera and now a member of

Detroit Alumnae Chapter. The first of the three programs was "An Adventure in Chamber Opera" featuring *The Telephone* by Menotti and Mozart's *The Impresario*. Marjorie Gordon appeared in the latter work in the role of "Madame Lubovna." The second program was "An Adventure in Chamber Music" and "An Afternoon of Music for Chamber Orchestra" ended this unique series of adventures. The concerts were distinguished by first rate performances and capacity crowds attended them. The great success of this spring music festival has inspired hope that it will grow and develop to include many musical experiences and become a permanent factor in the life of Detroit.

Marjorie Gordon, lyric-coloratura soprano, began piano study at the age of four. She was graduated with honors at the age of eighteen from Hunter College. In 1949 she made her symphonic debut with the Chautauqua Symphony Orchestra under Franco Autori. She has since appeared with many orchestras including New York Philharmonic "Pops," NBC Symphony under Toscanini, Little Orchestra Society under Thomas Scherman, National Orchestral Association. Marjorie Gordon has appeared in recital throughout the United States and was winner of "Stars of Tomorrow" contest, co-starred with Jan Peerce and Felix Knight on Duquesne Showtime (Pittsburgh), appeared in Metropolitan Opera Auditions of the Air, the CBS Music in the Air, Omnibus CBS-TV, Opera Cameos TV. She was assistant professor of voice at Duquesne University, Pittsburgh from 1956-59. In opera, she made her debut as "The Doll" in

*Tales of Hoffman* in 1955 with the New York City Opera. Marjorie has also appeared with her husband, Nathan Gordon, violist, in joint recitals.

Glowing press notices describe her in this manner: ". . . The interest of the work lay principally in Miss Gordon's excellent performance of Olympia . . . exemplary clearness and brilliance . . . something to relish and admire . . ."—Olin Downes in the *New York Times*; ". . . Miss Gordon was superb . . . warm and accurately placed voice soared . . . in even and rich tones . . ."—*Pittsburgh Post Gazette*.

Marjorie Gordon is doing leading operatic roles in the midwest and Chautauqua, New York, during the summer of 1959. In November, she will appear as soloist with the Detroit Symphony Orchestra directed by Paul Paray.

### ALICE LUNGERSHAUSEN

△ ALICE LUNGERSHAUSEN, Detroit Alumnae, was featured performer with The Baroque Ensemble in the first Handel Commemoration program to be given by a group in Detroit. A well-known harpsichordist, Alice organized this group composed of Arno Mariotti, oboe, Paul Olefsky, cello, and Faye Turner, soprano. The two men in the ensemble are first chair members of the Detroit Symphony Orchestra.

Included in this outstanding Handel program in May were: *Concerto in G minor* for Oboe and Harpsichord; *Suite No. X* for Harpsichord; *Suite No. V* for Harpsichord (Air and variations); Three German Songs for Soprano, Oboe, Cello and

Harpsichord; *Sonata in B Flat Major* for Cello and Harpsichord; and Arias from *Julius Caesar* for Soprano, Oboe, Cello and Harpsichord.

Impressive press notices followed this outstanding concert. Typical comments are expressed in this excerpt from the *Detroit Free Press*: "Mrs. Lungershausen's performance of the Suite No. 10 was a revelation in technical and expressive mas-

tery. . . . The program was a matter of intense musical interest. . . . One was at once impressed by the variety and catholic scope of the writing of the 18th Century composer."

Adding to the charm of this concert was its being performed by candlelight in the grand salon of Grosse Pointe War Memorial Center.

## More Jewels / in Our Crown



### JACKSON ALUMNAE

△ A BANQUET in the Marine Room of the Rotisserie, with Jane Hinkle McCluggage, installing officer, as honored guest, began festivities which culminated in the installation of Mu Phi Epsilon's first alumnae chapter in Mississippi.

Following the banquet, the group adjourned to the home of Mrs. John

T. Caldwell, for a musicale. The program was presented by Mrs. W. F. Goodman, Jr., who sang "The Black Swan" from *The Medium* by Menotti and "Un Bel Di" from *Madame Butterfly* by Puccini; Mrs. Tom Nash, played "Nocturne" by Woodman and "The Butterfly" by Lavallee; and Mrs. John Menist, sang "Mon coeur s'ouvre a'ta voix" from *Samson et Dalila* by Saint-Saëns,

"Ich bin eine Harfe" by Erich Wolff, and "Late Summer" by Burnet Tut-hill.

After the musical, the Jackson Alumnae Chapter of Mu Phi Epsilon was officially installed by Jane McCluggage. Members of the Belhaven chapter, Epsilon Gamma, assisted in the installation ceremony.

Guests from Belhaven College included Lynda Byrd, Roxann Cox, and Martha Jo Sumrall.

Officers for 1959-60 include Mrs. M. L. Sigrest, President; Mrs. Harold Avery, Vice-President; Betty Ann Storer, Corresponding and Recording Secretary; Mrs. Richard B. Powell, Treasurer; Mary Anne Martin, Warden; Mrs. J. N. Brock, Historian; and Mrs. John T. Caldwell, Chaplain. Mary Anne Martin, Mrs. Harold Avery, and Mrs. Richard B. Powell were also charter members of the Epsilon Gamma collegiate chapter at Belhaven.

## ATLANTA ALUMNAE

△ THE installation ceremony for the ATLANTA ALUMNAE CHAPTER of Mu Phi Epsilon was held on Sunday afternoon, May 24, at three o'clock at the home of Mrs. Wallace Alston. Jane Hinkle McCluggage, National Third Vice-President, was the installing officer. The officers who were installed were: President—Mrs. Robert S. Lawrance, Jr.; Vice-President—Mrs. R. O. Harris; Secretary—Mrs. H. A. Park; Treasurer—Mrs. Roger W. Allen; Historian—Mrs. J. L. Longino; Warden and Chaplain—Mrs. P. O. Lewis.

Immediately following the installation a tea was given for Jane McCluggage. On Monday, May 25, she was honored by the officers of the Chapter with a luncheon at the Coach House. Monday night she was a guest of the North Fulton Special Choir.—MARIEL S. LONGINO, *Historian*.

## Here 'n There

△ MARILYN NEELEY and JOANNA DE KEYSER, Mu Nu Chapter, are flying to Geneva on September 13 where they will enter two divisions in the International Competition for Musician Performers. Together they are entering the "Sonata for Piano and Cello division" and Marilyn is also entering the "Piano division."

PHYLLIS GERSBACH, NANCY ROGERS, RACHEL ROBBINS and ANN BLAKE, all from Psi Chapter at Bucknell, are part of the scene at Beaverbrook Music Camp at Pocono Pines, Pennsylvania. Ann is one of our honorable mentions for the Senior Achievement Award and is head counselor at Beaverbrook this summer.

JOANN CROSSMAN STENBERG appeared as piano soloist with the summer San Francisco Symphony under the direction of Arthur Fiedler on July 18, 1959. JoAnn played MacDowell's *Second Concerto in D minor*. She is a concert pianist of repute, having studied with Firkusny, Baller and Podolsky, and has also appeared extensively in concerts with her husband, Donald Stenberg.

# Mu Phi Epsilon Friendship Fund's \$500 SCHOLARSHIP FOR GRADUATE STUDY IN MUSIC THERAPY

for the school year 1960-1961  
to be awarded at

NATIONAL CONVENTION, Santa Monica, California, 1960

ELIGIBILITY: Candidate must hold a Bachelor's degree with a major in Music Therapy from a school approved by the National Association of Schools of Music and have successfully completed all clinical training requirements.

QUALIFICATIONS: Scholarship and musicianship—proficiency and promise of future success as a music therapist.

Personality—versatility, patience, emotional stability, imagination; leadership ability, and ability to work with groups.

APPLICATION: Should be received by the Chairman of the Committee before March 15, 1960, and include:

1. A transcript of college grades
2. Letters of recommendation from:
  - (a) Faculty adviser from school granting degree
  - (b) Supervisor of clinical training
  - (c) If employed—director of Music Therapy program
  - (d) Character reference from a responsible individual of Long-time acquaintance
3. A personal statement giving a brief review of musical activities such as group participation in choirs, band, orchestra
4. A statement of specific reasons for doing graduate work and stating school at which this work will be done

## MU PHI EPSILON MUSIC SCHOLARSHIP COMMITTEE:

Viola M. Anderson (Mrs. H. O.)  
National Chairman Music Therapy, MΦE  
1038 1st Street North, Fargo, North Dakota

Esther B. Richardson (Mrs. George F.)  
8 South Brookwood Drive, Montclair, New Jersey

Mr. Robert F. Unkefer  
Michigan State University  
East Lansing, Michigan

THE SUMMER 1959 TRIANGLE OF MU PHI EPSILON

# FRIENDSHIP CORNER . . .

Mu Phi Epsilon's Friendship Corner offers useful and decorative items for sale among sorority members and interested friends.

ORDERS SHOULD BE SENT TO:

Mrs. Carl R. Ferris, MΦE Friendship Corner Chairman  
629 West 70th Terrace, Kansas City 13, Missouri

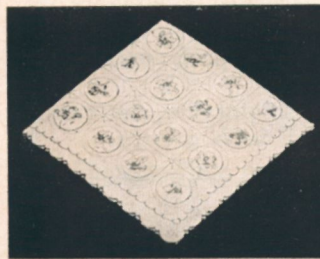
accompanied by check or money order to—Mu Phi Epsilon . . . Be sure to mention the name of your chapter.



#101 NOTE PAPER  
Grey paper with dark purple violets and musical design. 10 in pack.  
per pack .....70c



#102 POST CARDS  
White card with scattered violets. 12 in pack.  
per pack .....60c



PAPER NAPKINS  
Quality paper, scalloped edges, all-over violet design. Made in Denmark. 18 in pack.

#103 Tea or cocktail size, per pack .....40c  
#104 Luncheon size, per pack .....60c

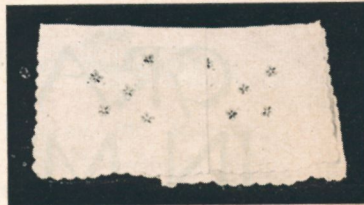


#105 PAPER TOWELS  
White absorbent paper with violet design. 12 in pack, per pack .....50c

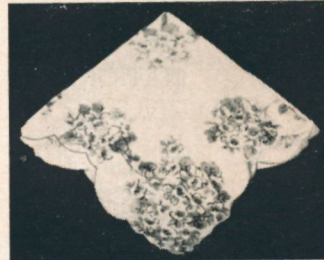
#106 ADDRESS LABELS  
Personalized address labels for letters, books, music, etc.  
600 .....\$2.00

#107 TILES  
Heavy ceramic, white with MΦE crest in purple. 6" square. Felt back, for hot dishes. Each.....\$3.00

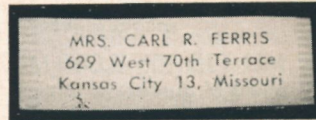
## HANDKERCHIEFS



#108 Sheer white linen with embroidered purple violets in each corner, scalloped edge.  
Each .....\$1.25



#109 White background hankie with all-over design of purple violets. Each .....75c



#110 T-SHIRTS  
White cotton, short-sleeve with MΦE lettering and crest in purple. Sizes small, medium and large. Each ....\$2.50

#111 SWEATERS  
Heavy combed cotton, long sleeve with MΦE lettering and crest in purple. Sizes small, medium and large. Each...\$4.50

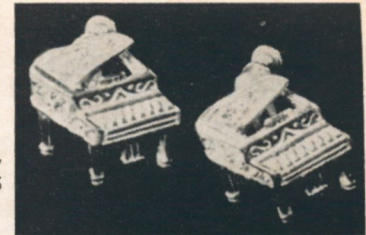


#112 SKULL CAPS "BEANIES"  
Purple felt with MΦE in white.  
Each .....\$2.00

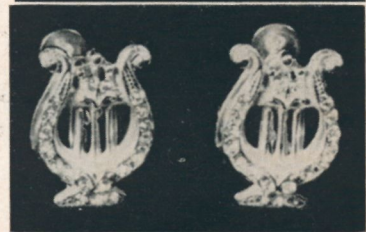
#113 PENNANTS  
5"x12". White MΦE letters on purple felt. Colorful, decorative. Make good pledge party favor.  
Each .....75c



#116 VIOLIN EARRINGS  
Gold set with rhinestones, screw on. Drop type.  
Pair .....\$1.25



#114 PIANO EARRINGS  
Gold set with rhinestones, screw on. Pair .....\$1.25



#115 LYRE EARRINGS  
Gold set with rhinestones, screw on. Pair .....\$1.25

## BRACELETS

#117 Yellow, nine musical charms. Each ....\$1.50



#118 Sterling silver, five musical charms, hanging.  
Each .....\$5.00



#119 Sterling silver, six musical symbols on staff.  
Each .....\$5.00



#120 Sterling silver note pin. Each...\$1.95

All profits help to build the Friendship Fund of Mu Phi Epsilon, established to support projects in the field of:

Music Therapy, Music for the Blind  
International Music Relations  
MΦE School of Music at Gads Hill

Postage paid by Mu Phi Epsilon

All orders given prompt attention

Tax is included in the price quoted on all items.



# Pride of Mu Phi Epsilon

## HAZEL VOLKART



△ HAZEL VOLKART, Kansas City Alumnae, began her career at the early age of three years in her hometown of Iola, Kansas when she astounded acquaintances by exhibiting her natural pianistic ability. "A little girl of three years has aroused wonder and admiration by her remarkable ability to play the piano," reported the Iola Daily Register. "The little girl knows nothing of the meaning of the printed note nor of the conventional method of fingering, yet she plays the piano and plays it well."

From this remarkable beginning, Hazel progressed through high school winning varied awards for her pianistic ability. Her first college years were spent at The Oklahoma

College for Women. Later, she received music scholarships at the Kansas City Conservatory of Music, where she studied with Dr. John Thompson, Sir Carl Busch, and Bertha Hornaday.

Hazel has composed educational teaching pieces for children published by such houses as Mills Music Publishers, Shattinger Music Company, Theodore Presser, and Shroeder and Gunther. She has recently had six new pieces for beginning piano students published by Mills Music Publishers.

Her two compositions entered in a MΦE Original Composition contest several years ago both received "honorable mention" and she received second place in the 1957 Original Composition Contest for her *Sonatina in D Major* which was performed at National Convention last year.

Hazel composed a larger work, "The Victory Entree March" orchestrated for 50 pieces which was played by the late Dr. DeRubertis's orchestra on the summer park concert program of her city. She also composed the official school song for a new junior high school in her area.

She belongs to many music clubs and was president of the Federated Music Teachers several years ago. She teaches piano privately and composes in her spare time. She is married and the mother of a charming teen-age daughter who is also very musically talented and studies

voice and violin under scholarships at the Conservatory of Music of Kansas City.

Hazel Volkart is another example of a dedicated Mu Phi whose life has centered around her beloved music.

## CAROLYN STREET AUSTIN



△ ANN ARBOR ALUMNAE CHAPTER of Mu Phi Epsilon has been proud of and grateful to its gracious and energetic president, Carolyn Street Austin. She has provided the group with strength and good leadership for the past two years.

Carolyn's home town is Sante Fe, New Mexico. Although she attended Colorado Women's College in Denver, the major part of her collegiate work was done at the University of Michigan. There she received her Bachelor of Music and Master of Music degrees, and was initiated into Gamma Chapter of MΦE.

After participating actively in many opera productions on the University campus, Carolyn continued

to pursue her musical activities in New York City, where she studied voice with Estelle Liebling, Martial Singher, and Eugene Morgan. At the same time she was guest soloist on the Phil Spitalny "Hour of Charm" radio broadcasts and actively participated in several choral groups.

Later, Carolyn and her husband Henry (also a singer and actor) joined the National company of "Oklahoma!" touring the United States and Canada for two seasons. Carolyn played the parts of "Kate" and "Giggling Gertie," and Henry portrayed "Judd."

The Austins returned to Ann Arbor when Henry became a member of the University of Michigan department of radio and television. They now have two sons, Henry, Jr., and William Gordon. Presently, Carolyn gives vocal recitals over the University radio station, WUOM. She also has been guest soloist with the Plymouth Michigan Symphony Orchestra. Her contribution to our Mu Phi Epsilon musical therapy program at the Veterans' Hospital has been outstanding.

## BARBARA SMITH

△ BARBARA BARNARD SMITH, graduate of Eastman School of Music, Rochester, N. Y., with a Master of Music degree in Music Literature, is a member of Mu Phi Epsilon who is making a name for herself as a student of Asian music and musical instruments by travel and study in many oriental countries.

In 1956 Barbara received a Rockefeller grant for travel in Asia to study the koto, a 13 stringed, six-foot long Japanese instrument, played by plucking. Travel included

the Philippines, Japan, Korea, Okinawa, Taiwan, Hong Kong, Malaya, Singapore, Indonesia, Ceylon, Thailand, India and Pakistan. In many of these countries, she had conferences with outstanding musicologists and collected a library of Asian books, music and recordings. She was piano soloist with the Republic of Korea Navy Orchestra and played a koto recital in Japan.

With the second Rockefeller grant now in progress, Barbara is developing teaching materials in Asian music. Courses being given at the University of Hawaii include "Music of the Far East," "Pacific and Asian Music in Education," "Japanese Dance" and "Dances of the Pacific." During the summer of 1958, a third Rockefeller grant permitted travel in Europe to observe comparative music. While there Barbara presented a paper, recordings and slides of "Folk Music in Hawaii" at the 11th Annual Conference of the International Folk Music Council in Belgium.

Last year Barbara gave 14 lecture-recitals on Asian music and dance at the University of Hawaii, the Honolulu Academy of Arts, Morning Music Club and various organizations. Work on the Folk Music Festival this spring emphasizes materials within the school curriculum from pre-school through college. During the Christmas Holidays, Barbara presented a talk in Boston to the Society for Ethnomusicology on "Traditional Hawaiian Music."

In addition to learning and teaching the techniques of making traditional Hawaiian instruments, Barbara also performs on the shakuhachi, (a vertical bamboo flute); the taiko, (big drum used for Bon

dances); the Butterfly harp, (a zither); the Korean Chang-Ku, (drum), and several ancient Hawaiian instruments.

## Here 'n There.



△ RUTH JO ROSSER, Kappa Chapter, is the winner of the \$50 cash award given at the end of each semester by Indianapolis Alumnae Chapter. This award is given to the member of Kappa Chapter who has the highest scholastic rating. This is the fifth time Ruth Jo has won the award during her college career. She is a member of Mortar Board, Phi Kappa Phi, Kappa Delta Pi, Tau Beta Sigma, is listed in *Who's Who in American Colleges and Universities*, and is past president of Kappa Chapter. Ruth Jo worked three summers as student assistant to the Music Therapist at Central Mental Hospital in Indianapolis and she teaches violin and clarinet privately. She graduated from the Jordan College of Music at Butler University in June and plans to teach.

# Of Honors & Distinctions

△ Awards and special honors were given to many members of Mu Phi Epsilon throughout the country in this past year. We take great pride in their achievements and are happy to present them to you:

### FULBRIGHT SCHOLARSHIPS

CONNIE COWAN, *Omega*, DIANE WAGNER, *Mu Beta*, BETH MOSHER, *Mu Nu*, and CAROLYN BROWN, *Mu Nu*, have been awarded Fulbright Scholarships for the coming year, the latter three for study in Germany. JESS EWERT, *Phi Epsilon*, has been named an alternate for a Fulbright Scholarship.

### NATIONAL SCHOLARSHIPS

Scholarships from national foundations were awarded this past year to the following:

THEODORE PRESSER SCHOLARSHIPS—NANCY FARRAND, and MARIANNE DAVIDSON, *Gamma*, University of Michigan, Ann Arbor, Mich.; SONIA COPENHAVER, *Mu Gamma*, University of Nebraska, Lincoln, Nebr.; RULEE MATSUOKA, and MARIE VANCE, *Epsilon Rho*, Montana State University, Missoula, Mont.;

YOUNG MUSICIAN FOUNDATION AWARDS—JOANNA DE KEYSER and MARILYN NEELEY, *Mu Nu*, University of Southern California, Los Angeles, Calif.

PITTSBURGH MUSICIANS CLUB CONTEST—A scholarship of \$200 and the ENOLA M. LEWIS

SCHOLARSHIP of \$1,200 from the Tuesday Musical Club of Pittsburgh were won by GEORGETTA GATTO, *Epsilon Upsilon*, Duquesne, University, Pittsburgh, Pa.

CARL PREYER SCHOLARSHIP—offered by Lawrence Kansas Music Clubs, was awarded to MARIANNE MARSHALL, *Xi*, University of Kansas, Lawrence, Kans.

LOS ANGELES VOICE ASSOCIATION SCHOLARSHIP—MYRNA LEE, *Mu Nu*, University of Southern California, Los Angeles, Calif.

NATIONAL FEDERATION OF MUSIC CLUBS AWARD OF MERIT IN THE 1959 PARADE OF AMERICAN MUSIC was won by Mu Tau Chapter, University of North Dakota, for their American Music Recital.

WILLENE AMBROSE, *Epsilon Rho*, Montana State University, won a Shakespearian Scholarship to summer school in Canada; MARY LOU GALEN, *Alpha Beta*, Hartt College of Music, won a full tuition scholarship to Aspen this past summer; HARRIETT ALOGIAN, *Phi Chi*, Fresno State College, won a scholarship to the Interlochen Opera Summer School.

Among nominees for the WOODROW WILSON AWARD were: LETA THOMASON, *Epsilon Epsilon*, Texas Christian University, and DENIESE MAGNESS, *Epsilon Pi*, Texas Technological College.

#### COLLEGIATE HONORS

Seven members of MΦE were chosen for Phi Beta Kappa, national collegiate scholastic honor society; 34 coeds were tapped by Mortar Board, composed of senior women chosen for both high scholarship and campus activities; Phi Kappa Phi, national all-university scholastic honor society, chose nine girls at various schools; Alpha Lambda Delta, national honorary scholastic society, honored eight young women.

Other national honor societies which chose members of MΦE included 41 in Pi Kappa Lambda; one in Kappa Delta Pi, Education Recognition Society; two in Kappa Delta Phi, Professional Education; four in Pi Gamma Mu, Science Honorary; two in Pi Lambda Theta, Professional Education; Delta Kappa Gamma, international honor society for women educators, invited one of our members into membership. Fourteen were listed in *Who's Who in American Colleges and Universities*.

#### GRADUATE FELLOWSHIPS

Graduate fellowships are being used for study this year by VENONA ROCK, *Phi Zeta*, Morningside College, at Louisiana University; MARIE KUMER, *Epsilon Tau*, at Washington University.

#### PROFESSIONAL APPEARANCES

*By Collegiates:* JOAN GOODWIN, *Phi Mu* at San Jose State College, was piano soloist with the San Jose Symphony; ALICE ROBERTSON and SHARON HOLDAWAY, *Mu Rho*, University of Denver, sang with the Central City Opera; MARILYN NEELEY, *Mu Nu*, University of Southern California, was piano soloist with the Pasadena Symphony Orchestra.

*By Alumnae:* DR. HAZEL NOHAVEG MORGAN, represented the American delegation to the International Educators Conference in Denmark in August. WANDA PAUL, pianist, presented a Fullerton Hall recital in downtown Chicago in May. RUTH MULLER, violinist, gave a recital on the Lake Forest Concert Series in November; ELIZABETH AYRES KIDD, musicologist, was presented at Harvard University in February. These alumnae are all members of Evanston-North Shore Chapter. Dallas Alumnae members GLORIA TURQUETTE BRYDON sang the alto solo role in the *Bach B Minor Mass* with the Houston Symphony; PATRICIA CRENSHAW sang the role of "Delilah" in a concert version of the opera in First Methodist Church, Dallas; and RUTH NORTON MEADE sang the soprano solos in a Haydn *Mass* with the Southern Methodist University Choral Union. MARY BURNET WHEELER, Connecticut Valley Alumnae, was appointed Music consultant for the National Y.W.C.A. EUNICE PODIS performed the Tschai-kowsky *Piano Concerto in B Flat minor* with the Cleveland Suburban Orchestra in May, the Rachmaninoff *Second Piano Concerto* with the Cleveland Summer Pops in addition to other concerts and recitals. SUE THOMAS SILFIES, Cleveland Heights, appeared as guest pianist with the Cleveland Woodwind Quintette and the Clarinet Art Ensemble and also plays viola in the Cleveland Philharmonic. MARY FOGARTY, Cleveland Heights, had a featured role in Matt Doran's opera *The Committee* as part of the Cleveland Festival of Contemporary Music. RAMONA ROCKWAY GRIM, Palo Alto alumnae, sang the role of "Guioletta" in

*Tales of Hoffman* and "Zita" in *Gianni Schicchi*, both West Bay Opera Company productions. Also prominent in the same opera company is Palo Alto member RUTH KRUSE PETERS, contralto, who sang the role of "Hata" in *The Bartered Bride*. BRUNETTA MAZZOLINI, Portland, Ore., Alumnae, was soprano soloist with the Portland Symphony in the Brahms *Requiem* and with the Seattle Symphony in the Verdi *Requiem*. JEANETTE TILLET, Fort Worth Alumnae, won first prize for her "T.C.U. Alma Mater" in a contest for a new school song. HILDUR SHAW, Fargo Alumnae, was elected to the National Board of National Federation of Music Clubs and has been made a life member of N.F.M.C. by the State Federation of North Dakota. Hildur is also Northern Lights District Chairman of Marie Morrisey Keith Scholarship of N.F.M.C. Two Denver Alumnae members made debuts with the Denver Lyric Theatre: JANET FEE STARK sang the role of "Silverpeal" in Mozart's *Impressario* and DOLORES SNYDER was "Suzanne" in Wolf-Ferrari's *Secret of Suzanne*. VIOLETTE MCCARTHY and JEANNE KOSTELIC are singing lead roles in Benjamin Britten's *Albert Herring* in connection with the Colorado Centennial and Jeanne has also been soloist with the Denver Symphony in the orchestra's panoramic production of Haydn's *Creation* at the Red Rocks Theatre.

## Honors Potpourri

JEAN PRESTON, Salt Lake Alumnae, won first place in the regional finals of San Francisco Opera debut auditions. . . . DOROTHY PIJAN, Epsilon Pi, sang the lead in *Riders to the Sea* at Texas Tech. . . . YVONNE SKINNER, Epsilon Pi, was "Miss Lubbock of 1958" and also "South Plain's Maid of Cotton". . . . PATRICIA BOSTWICK, Epsilon, had the lead role in Toledo Theatre's first musical production *Finian's Rainbow*. . . . SHIRLEY REINGK, Mu Gamma, was finalist in Sigma Chi Sweetheart contest on campus. . . . MARY ALICE DAMMANN, Epsilon Epsilon, was Phi Mu Alpha Sinfonia Sweetheart on T.C.U. campus. . . . DIANE RAGAINS, Epsilon Omicron, was selected to tour Europe this summer with the "Belles" of Indiana University. . . . JEAN MAIJO, Epsilon Omicron, was chosen to teach in Netherlands Centilles. . . . BONNIE RAASCH, Mu Tau, played "Eileen" in U of South Dakota's production of *Wonderful Town*. . . . PAT MITCHELL, Phi Xi, was campus president of the Y.W.C.A. . . . Two other other "Pats" from Phi Xi, PAT PATILLO and PAT SULLIVAN, were Baylor Beauties. . . . JOYCE ANN MOORE, Phi Psi, was appointed by the Virginia Baptist Student Union as Student Summer mission worker in music in New Mexico. . . . KAY MYRON, Mu Tau, sang the role of "Lucy" in the campus production of *The Telephone*. . . . All of the foregoing graphically brings out the fact that the leaders in the profession, on campus, and in the community are Mu Phis, serving with enthusiasm and distinction.

## We Welcome Them To Our Official Family



Eloise Hill

△ National Council is pleased to announce the appointment of the following to fill vacancies created during this past year:

ELOISE E. HILL, former District Director of District No. 2, is now National First Vice President replacing Rosamond Davis. A native of Pennsylvania, Eloise is a graduate of Bucknell University where she was initiated into Psi Chapter of MΦE. She has done graduate work at Pennsylvania State University and Middlebury College in Vermont. Long affiliated with Philadelphia Alumnae Chapter, Eloise has served in capacities of president, vice president, secretary and magazine chairman.

ELEANOR HALE WILSON, past National President, has been appointed National Finance Chairman replacing Dorothy Paton. She served as National First Vice President for two terms previous to her two terms as National President, was convention chairman at National Convention in



Eleanor Hale Wilson



Katharine Shirley

Seattle, and had held many chapter offices in Seattle Alumnae Chapter.

KATHARINE SHIRLEY, National Magazine Chairman, replacing Marjorie Bernat, has served Mu Phi Epsilon in various capacities. She was secretary to Ruth Row Clutcher during her two terms as National President and had also served on the Finance Committee for a number of years. Katharine has long been affiliated with Philadelphia Alumnae, and has served as its president quite recently.

Mu Phi Epsilon is deeply grateful to the retiring officers for their work on behalf of the sorority, and extends its good wishes to those assuming new duties.

### Here 'n There

△ ELIZABETH MOSHER and CAROLYN BROWN have recently been awarded Fulbright Scholarships for study in Germany. Elizabeth is a graduate in the vocal department at U.S.C., having received her B.M. in 1957 and her M.M. in 1958. A student of Mrs. Chamlee, she coached with Gwendolyn Kodolfsky, and sang several leading soprano roles in U.S.C. opera department productions, among them the role of "Elizabeth" in Verdi's *Don Carlos*. She also sang with the U.S.C. Symphony and won the Young Artist's Contest in 1958. Elizabeth is a member of Pi Kappa Lambda in addition to MΦE. On graduation, she was awarded the *Alumni Award* (School of Music) and *Voice Department Award*. She won a Fulbright Scholarship for study in Hamburg, Germany for 1958-59 and is remaining in Europe this coming year to gain

further experience in professional opera.

CAROLYN BROWN, pianist, received her B.M. in 1958 and her M.M. this past spring. A student of Muriel Kerr (on scholarship), she is a member of Pi Kappa Lambda, Phi Kappa Phi, National All-University Scholastic Honorary, in addition to MΦE. On graduation she was awarded the *Alumni Award* and *Piano Department Award*. Her Fulbright Scholarship is for piano study at Stootliche Hochschule fur Musik, Frankfort, Germany, for the coming year.



Carolyn Brown

RUTH ROGERS JOHNSON, St. Louis Alumnae, won first prize in the short story contest sponsored by the Missouri Federation of Women's Clubs. It was a Christmas story "commissioned" by the St. Louis Alumnae chapter and written for their December meeting. Our congratulations!

# In The Picture Parade

MU PHI EPSILON LUNCHEON—APRIL 19, 1959: 30th Biennial Convention of National Federation of Music Clubs, San Diego, California. (back row): Ruth Bradley, Myrta Bonnett, Marie Lowry, Ruth Christensen, Janet Richardson, Florence Freed (guest), Bessie Ogden, Mary Halliday Walker, Mary Ellen Woodhouse, Merle Montgomery, Lavina Mueller, Constance Virtue, Gladys Johnston, Harriet Payne, Hildur Shaw, Leona Du Paul; (middle row): Helen Dill, Eleanor Godels, Martha Day, Neva Barnard, Ethel Croft, Barbara Sterling Remington, Louise Milner, Rosalie Speciale, Mary Caldwell, Bertha Van Tilburg; (front row): Margery McIntosh, Luna Wootten, Edith Dorsey, Marjorie Sherman, Veta Riegel, and Ollie Gant.



and Barbara Sterling Remington, daughter of Dr. Winthrop Sterling, our founder.

THE SAN DIEGO ALUMNAE CHAPTER was privileged to entertain Mu Phis who were attending the 30th Biennial Convention of the National Federation of Music Clubs (held the week of April 19th, 1959) at a luncheon held at the Cafe del Rey Moro in Balboa Park. Greetings were extended by Mary Caldwell, San Diego Alumnae Chapter President, and replies were made by Rosalie Speciale, National President; Bertha King Van Tilburg, past National President; Hildur Shaw, past National Third Vice President; Harriet Payne, District Director; Martha Day, 1960 Convention Chairman;



Irene Chambers, St. Louis Alumnae, is shown with Jan Peerce after one of his concerts in London.

THE SUMMER 1959 TRIANGLE OF MU PHI EPSILON



Rosalie Speciale, National President, presents a \$1,000 check to Dean Raymond Kendall, U of Southern California, for a cello scholarship given by Los Angeles area MΦE chapters.

Jean Madeira is shown with Sandy McLarty, Mu Nu chapter president. Jean starred in Carmen at the Hollywood Bowl under the direction of Andre Kostelanetz in July.



ARDELLA SCHAUB, Los Angeles Alumnae, was honored at a luncheon by San Mateo Mu Phis at the time of her lectures at Notre Dame College in Belmont this past summer. Ardelta is co-author of a piano method for teaching beginners and is on the faculty of the Los Angeles Conservatory.

SYLVIA MEYER, Washington Alumnae, was guest of honor at the National Symphony Orchestra Association Women's Committee luncheon in May. She has been the symphony harpist for 25 years and was presented with an engraved cigarette box on this occasion.

## 3 New Choral Numbers

By

RUTH BRADLEY

1. *Abraham Lincoln Walks at Midnight*  
A Cantata for Mixed Chorus, with Piano, (Vachel Lindsay)
  2. *Bleecker Street Market*  
For Mixed Chorus—a cappella (Emily Barto)
  3. *Prince Toto II*  
A short Cantata for Baritone or Mezzo-Sop. Solo and Women's Chorus and piano (Norma Sparlin)
- Order from:  
The Composers Press, Inc.  
Henri Elkan  
1316 Walnut Street  
Philadelphia 7, Pa.

THE SUMMER 1959 TRIANGLE OF MU PHI EPSILON

# In Memoriam

## LOUISE VAN OGLE

△ LOUISE VAN OGLE, Seattle Alumnae, former concert pianist and assistant professor at the University of Washington School of Music, died April 21, 1959. Born in Gloucester, England, she studied there and abroad under the eminent musicians Leopold Godowsky, Harold Bauer, and Josef Lhevinne. Louise went to Tacoma in 1893 and came to Seattle in 1895, teaching music and music appreciation on the campus until her retirement in 1947. She lectured in the West and Midwest and traveled extensively throughout the world. She collected folk music from almost every country and had much of it recorded. During her travels Louise attended concerts and operas in which the world's leading musicians performed. Once in Paris she went to hear the concert of a little boy in knee pants, now the great violinist, Jascha Heifetz. She was entertained by Jean Sibelius near Helsinki, Finland, and spent the winter of 1913-14 and 1938 in Russia. In all, she crossed the Atlantic 24 times. Louise Van Ogle helped compile the Seattle Public Library's original collection of opera scores, and her own collection has been willed to the library.—JANET POHLMAN SAWYERS, *Historian*.

## CHARLOTTE RUEGGER

CHARLOTTE RUEGGER, Toledo Alumnae, died in June, 1959. Char-

lotte was a member of the music department at the University of Toledo, where she organized the chorus and orchestra. Since her retirement in 1950, she had taught and composed. Born in Switzerland, she lived in Belgium before coming to this country in 1913 to head the violin department at Oberlin College. Returning to Belgium the following year, she was caught up in World War I and remained as a Red Cross worker until 1918. She served alongside Queen Elizabeth of Belgium in the trenches and was a lifelong friend of the queen. The Belgian queen and king later decorated her for her service. The Germans sentenced her to be shot for treason, but the sentence later was commuted, for what reasons she never knew.

She returned to this country to head the music department of Meredith College in North Carolina. She also taught at Albion College, Michigan, and had a career as a concert violinist and recitalist. A Brussels Conservatory of Music graduate, Charlotte became a member of MΦE at the Toledo Conservatory of Music. She was also a member of the American String Teachers Association and in 1954 the Ohio Division granted her its first recognition award for outstanding contributions to the advancement of string teaching in Ohio. She was also a member of the Ohio Music Teachers Association, the Toledo Archaeological Society and St. Mark's Episcopal Church in Toledo.

# the Sounding Board

## GREAT LAKES

PHI SIGMA: One of the first events of the year was the dinner and reception in Evanston, honoring our National President, Rosalie Speciale, which was attended by Joan Pallasch and Sandra Sinkler. Our first initiation was held at the home of patroness, Mrs. Arthur C. Becker. Gloria Lewis and Joy Gleason were the first initiates for this year.

Marjorie Kenney, faculty adviser, was hostess for the dinner in honor of Camilla Ayers, District Director. This was followed by chapter inspection and installation of officers: Carol Miller, president; Sandra Sinkler, vice-president; Mary Lou Mackowiak, treasurer; Gloria Lewis, corresponding secretary; Joy Gleason, recording secretary; Caryl Sonnenburg, warden; Mary Schiavone, historian; Eleanor Waymel, alumnae secretary. Our second initiation at the home of our president Carol Miller, brought us additional new members—Mabel Morrison, Marie Colosso, Mary Lou Johnson. Our members outdid themselves on their visit to the Veterans Research Hospital and the ensuing entertainment. At another such visit to Marine Hospital, Joy Gleason, accompanied by her mother at the piano, sang a program of light operatic arias, classical music and folk songs. Since Joy could not resist the appeals of the enthusiastic audience for "just one more" and "would you sing . . .," it is easily understandable that the program was prolonged for an hour and a half. At the District Conference at the Cordon Club, our Hsien Ming Tcherepnin's husband, Alexander Tcherepnin, pianist and composer of note, was the guest speaker. This was a very gratifying day for those of us who took part in the model initiation and pledging ceremony. Joy Gleason was accompanied by Carol Miller in the program which closed the conference.

The highlight at the close of the Conference was the evening program in the Grand Ballroom of the Conrad Hilton Hotel, for which Carol Miller had the

honor of playing the Liszt *Concerto in Eb Major* with the DePaul Symphony Orchestra, conducted by Paul Stassevitch of the Music School faculty.—MARY SCHIAVONE, *Historian*.



Carol Miller

Carol Miller, president of Phi Sigma chapter, presented a recital in DePaul University's Lewis Center Auditorium last spring. A pupil of Katja Andy, noted concert pianist, Carol's program was composed of the following:

*Italian Concerto*, Bach; *Thirty-Two Variations in C Minor*, Beethoven; *Etude in D Flat Major*, Liszt; *Valse Oublie*, Liszt; *Roumanian Dance, No. 1, Opus 8A*, Bartok; *Suite Pour Le Piano*, Debussy; *Etude in C Minor, Opus 25, No. 12*, Chopin; *Scherzo in B Minor, Opus 20*, Chopin.

PHI KAPPA: On March 25, 1959, the chapter went to the Franklin Settlement in East Detroit to give a program. It was a rewarding experience and we hope to be asked again. Phi Kappa Chapter is planning to do something new in the Fall. It is the brainchild of Barbara Phillips, a senior in Liberal Arts. She

feels that since most of us will soon be planning our own programs, we ought to know a few of the "whys" and "hows" of programing. Therefore our chapter is going to sponsor a Program Seminar. There will be four meetings. The discussions will include: (1) printing of programs; (2) ways of printing the numbers (composer first, title first, etc.); and (3) periods of music and how they relate to programing. The proposed speakers are Valter Poole, Associate Conductor of the Detroit Symphony Orchestra, who will speak on the programing of instrumental music; Dr. Ruth Wylie, new head of our music department, who will speak on the programing of contemporary music; Dr. Seldon, musicologist, who will speak on the history of music and how it relates to programing; and a printer who will give us prices and different ways that printing may be done. These seminars will be open to our student body and should help us to overcome our future program problems.—ELLEN WHEELER, *Historian*.

ANN ARBOR ALUMNAE CHAPTER has had a busy year on two counts. First, thanks to our efficient vice-president, Sieglinde Onderdonk, live and living music has been first and foremost on the program. Second, the joint activities with Gamma Chapter at the U of Michigan have been happy and productive. Ava Comin Case opened our year's activities by performing an evening of music by Bach. We welcomed her back after a sabbatical leave during which she had studied Bach's music with Mme. Alice Ehlers in Los Angeles. Another outstanding evening of the year was a program of contemporary American music. We were lucky enough to hear beautiful performances by sister Mu Phis and assistants; and present for the occasion were two of the composers, Leslie Bassett and Wallace Berry, faculty members of the University of Michigan.

Gamma Chapter's pledging and initiation were joint occasions for us, and thanks to the hospitality of Mrs. Charles Sink a lovely supper for the seniors of Gamma Chapter was held late in April. Our annual May Festival luncheon closed the year. We are looking forward to another productive program for next season.—HELENE HITCHCOCK, *Historian*.

CHICAGO ALUMNAE: Our eventful Spring season began with the March meeting at which time Elekta Tideman from the North Shore-Evanston chapter presented an inspiring group of piano solos. On April 26th our Award Tea and Musicales was held in the French room of the Drake Hotel. The winner of this year's Mu Phi of the Year Award is Eva Wright, soprano. Originally from Dubuque, Iowa, she now resides in Evanston, Ill., where she graduated from Northwestern University and was initiated into Sigma chapter. She served as assistant director of the University Chapel Choir and was coach and accompanist in the opera work shop. She appeared as soloist with the Northwestern University Chamber Orchestra and has spent the last two summers as a member of the Starlight Theatre in Kansas City, Mo. At present she is a pupil of our own Lola Fletcher and also a member of the newly organized Musica Sonora, which is a recording group soon to press its first recording of the works of Heinrich Schmitz. Eva sang a beautiful program of works ranging from opera to modern compositions. She was accompanied by Donna Roupas and assisted by Don Meacham, flutist. Shirley Norberg, violinist, assisted on the program with two groups of solos accompanied by Rose Willits.

Our Annual meeting was held in May at the home of Charlotte Johnson. We were delighted to affiliate three new members: Ann Koenigseken Wiczorowski, an organist and contralto formerly from Ohio Wesleyan; Mary Metcalf Hayden, pianist from Phi Zeta at Morningside College; and Sidney Cooley Ullrich, contralto from Iota Alpha Chapter. We are privileged to have installed four additional patronesses: Mrs. Charles Clark, Mrs. Leroy Kramer, Mrs. Peter Master-son, and Mrs. Henry Porter. Peggy Smith, soprano, and our last year's Mu Phi of the Year Award winner, gave an outstanding program, accompanied by Rhea Shelters. Our outgoing president, Brenda Baum, was presented with a gift in appreciation of devoted service to the chapter. Newly elected officers were installed by Helen Maxwell: Eugenia Wright Anderson, president; Mary Gottmann Stearns, vice president; Irene Theodore Antonion, secretary. We regret

that our treasurer, Zaida Luthey is leaving our group. This past Spring she directed the LaGrange Women's Club Chorus in a one-act musical, entitled "Following Foster's Footsteps," which she composed.—SHIRLEY NORBERG, *Historian*.

## NORTH CENTRAL

PHI ZETA CHAPTER at Morningside College, has been very busy this summer redecorating their chapter room. A new couch, draperies, rugs and other pieces of furniture, are among the new acquisitions which have been badly needed and we are thrilled to finally be able to finance this. Last spring we had a fine initiation dinner to which we invited a group of alumnae as special guests. Musical contributions from members of both alumnae and collegiate groups comprised the musical program for our eleven new initiates. Our four graduates will be teaching in various areas this fall. JEANINE ARNOLD, *Historian*.

## SOUTH CENTRAL

MU MU CHAPTER'S Spring Recital was a highlight of the Spring's activities. The biannual Recital of American composers was presented by Yvonne Hodges, Jo Ellen Cooley, Martha Evans, Leslie Dole, Nancy Irvine, Carolyn Lilly, Donna Turner, Betty Larkin, Jean Harper, Carol Korinek, Barbara Strahm, and Kay Reboul. A party was given after the recital, for prospective pledges, alumnae, and chapter members.

The officers elected for the 1959-1960 school year were Carol Korinek, president; Jo Ellen Cooley, vice-president; Betty Larkin, secretary; Jean Harper, treasurer; Martha Evans, historian; Leslie Dole, chaplain; Barbara Strahm, warden; and Betty King, chorister. Marion Pelton is our faculty adviser. Two new initiates were honored at a dinner given by faculty wives, Mrs. Thomas Steunenberg and Mrs. Luther Leavengood, and Miss Pelton. Mr. Thomas Steunenberg, Mr. Luther Leavengood, and Mr. Charles Stratton of the Kansas State University Music Department were special guests. The initiates, Sharon Toburen, soprano, and Glenna Eaton, piano, presented a

recital later in the evening. Mu Mu chapter selected Yvonne Hodges for its outstanding senior award.—MARTHA EVANS, *Historian*.

EPSILON PHI of Friends University, ended the school year with a busy schedule. We were honored by the visit of Meta Ann Knecht, our District Director. She was present at our Work Party, installation of officers, and a dinner was given in her honor. Our chapter initiated nine new members in the 1958-59 school year. They are Nancy Jackson, Ruth Ann Reagan, Marcia Johns, Janice Ann Johns, Leora Harner, Glenda Dye, Rosetta Stands, Norma Montgomery, and Ardath Bruner. Among the performances in which our members participated at the close of the year, were two senior recitals, presented by Charmaine Iorger, soprano, and Joan Lisenby, soprano. Several of our members performed in the *Symphony of Spring*, presented by the "Singing Quakers." We are proud of our members who received honors at the close of the school year. Charmaine Iorger and Marcia Johns were named in *Who's Who in American Colleges and Universities*. Dorothy Sandquist, Ruth Ann Reagan, and Marcia Johns graduated with honors and became members of the Friends University Order of the Tower. Mary Emily Perisho, Erma Jean Dunn, Cleo Wilson, and Jonnie June Barton received pins for being in the Singing Quakers three years. This summer Dorothy Addy presented an organ recital in Wichita Falls, Texas.—MARCIA LORRAINE JOHNS, *Historian*.

## PACIFIC NORTHWEST

EPSILON RHO: Spring quarter at Montana State University was a busy one for members of Epsilon Rho. We made and sold cookies, coffee, and lemonade at the all-state music festival and also assisted the adjudicators. The various members participated in band, symphonette, choir, brass ensemble, and Jubilee tours; one was guest singer on the band tour, and during the symphonette tour, two of the girls played concerti. We also had members who participated in the Madrigal singers, and the Missoula Civic Sym-

phony. Eleven new members were initiated in June. The president and secretary-treasurer of symphonette, the treasurer of band, and the two student representatives of the Civic Symphony council are MΦE members. Our members were prominent in the various plays and operas. One member, a Montana Masquer, played the leading role in *The Trojan Women*, and the leads in *The Medium* were portrayed by Mu Phis. One of these two placed third in the Miss MSU contest, while the other one was selected to take part in the Shakespearean Festival in Ashland, Oregon, this summer. This summer in the MSU opera workshop production of *The Boyfriend*, there will be five members participating. EP had fifteen (half) members on the spring quarter honor roll. Of the ten University students who graduated with highest honors, four were Mu Phis, and two others graduated with honors. To earn money, we sold coffee and cookies every Monday afternoon after the student recital. This also provided an enjoyable relaxation period for both students and teachers. This fall we plan to form a joint executive committee with ΦMA Sinfonia and also hope to sponsor a picnic with them this fall for the freshman music majors.—SONYA STIMAC, *Historian*.

## PACIFIC SOUTHWEST

EPSILON OMEGA CHAPTER: Three seniors, Lestelle Johns, coloratura soprano, Beverly Cottingham; soprano, and Marilyn Riley, violinist, presented senior recitals this spring. Pledge activities were numerous and were accomplished with great enthusiasm. Among these were a concert at the San Francisco Senior Center and a noon recital for ΦMA Sinfonia. Chapter members ushered for the Artist Series, a San Francisco State College activity, and for the Capella di Musica, a San Francisco Chamber Music Group, supported in part by Epsilon Omega members. Marilyn Wilburn, chapter president, was cast in the lead role of "The Duenna," given its American premiere on campus. Dawn Lowe, Sally Thompson, Frances Riley, Karen Muhly, Clyde Osterhaus, Evelyn Perkins, Penny Lorenz, Kathy Hewlitt and Marilyn Riley were members of the



Epsilon Omega members sing at San Francisco Senior Center.

cast and orchestra. The award for outstanding service and scholarship was presented to Patricia Doolittle and Beverly Cottingham. Both girls graduated with honors from S.F.S.C. and a plaque bearing their names was presented by our chapter at S.F.S.C.'s First Honor Convocation. Pat will continue studies at the Boston Conservatory of Music while Beverly will join her husband in Washington, D. C. In the fall we will present a Faculty Concert which will feature many of our faculty and give our new chapter year a fine start.—MEG STUART, *Historian*.

BEVERLY HILLS ALUMNAE CHAPTER viewed, in April, the San Fernando Valley lights from the beautiful new hillside home of our sister Evamaria Lanning whose husband had spent all of his free time building. Dr. Elizabeth May illustrated a talk by showing slides on "Japanese Children's Music Before and After Contact With the West." In May we met at the home of Wilhelmina Lindquist who now spends a great deal of her time at her Nevada cattle ranch. "Billie" Rizzo and husband Ross performed as a musical team presenting some of "Billie's" own modern compositions. Our annual installation of officers took place at Julie's Restaurant June 6. The following officers were installed for the coming year: President Thyra Snyder; Vice President Beatrice Carpenter; Corresponding Secretary Leola Blair; Recording Secretary Francis Wishard; Treasurer Esther Wiedower; Historian Edna Glassbrook; Chorister Virginia Mendenhall; Chaplain Gloria Franzen; Warden Ruth Anne McKean. Under the able leadership of Martha Day of the Los Angeles Chapter, we are making

preparation for the National Convention to be held in June 1960.—EDNA L. GLASSBROOK, *Historian*.

PALO ALTO: The recipient of our \$200 annual scholarship, Walter Moore, was featured on our matinee-musical in April. The concert itself was preceded by the traditional luncheon held in the dining room of the Stanford Union Residence. Luncheon hour music was provided for the sell-out affair by this trio: Joanne Jones and Barbara Harris, violinists, and Dorothy Reel, pianist.

After the luncheon, Mu Phis and their guests proceeded to nearby Dinkelspiel Auditorium where the concert took place. Comprising the program were:

Margo Armbruster, organist and last year's scholarship winner; Constance Seeley, pianist and runner-up for this year's scholarship; and our own alumnae chapter's instrument trio: Christine McCann, violinist; Maurine Cornell Stowe, cellist; and Ramona Rockway Grimm, pianist. They played Schubert's *Trio No. 1 in B flat Major, Opus 99*.

The concert was concluded by Walter Moore who performed the following: "Variations on the Name 'Abege'", Schumann; "Jardins sous la Pluie," De Bussy; "Sonatine," Bartok; "Preludes in B Major and D minor," Chopin.

After the busy period of preparation for the Musicales, Palo Alto Mu Phis relaxed with the refreshing program planned for them at their May meeting held at the home of Mrs. D. R. Gardener in San Mateo. Mae Cedargreen, soprano, sang in costume a group of enchanting Swedish folk songs, accompanied by Frances Woodin. Group singing was led by Mrs. R. E. Rawlins, who used her own choral arrangements which she also used during the past year with her Palo Alto Mother Singers group.

Highlight of this meeting was the installation of new officers for the coming term wherein Mrs. Charles W. Woodin turned her gavel over to Sue Campbell. Sue Campbell comes to us from Carleton College where she majored in voice and piano. A specialist in liturgical music and oratorio she has appeared under Alfred Wallenstein and Fritz Berens. In San Mateo, she has been soloist and choirmaster of Hillsdale Methodist

Church as well as taking part in numerous social activities.

Our June meeting featured a patio potluck supper and our annual white elephant sale, the proceeds of which are given to the national Friendship Fund. Palo Alto Alumnae Chapter now looks forward with expectation to the coming year during which our theme will be "Accent on the Ensemble." Each program will feature an ensemble effort by members who will be performing compositions which they have not previously studied or are performing with new partners. The programs include trios, a quartet, two pianos, organ, organ and piano, organ-voice-violin, and original compositions for chorus or vocal quartet by members of the chapter.—DOROTHY PETTY REEL, *Historian*.

SAN DIEGO ALUMNAE CHAPTER held its annual White Elephant sale in January. This always brings us a very good return. At the February meeting the following officers were elected: Louise Milner, Pres., Janet Richardson, V.P., Veta Riegel, Cor. Secy., Ethel Croft, Rec. Secy., Marjorie McIntosh, Treas., Ruth Christensen, Historian; Lois Meiers, violin, and Josephine Hutchinson, piano, furnished the program. In March we had our open meeting with Sigma Alpha Iota at the home of Pauline Hughes, S.A.I. The program was given by Mu Phis Norvada Smedley, voice, Bernice Huestis, piano, and Pauline Hughes, violin, S.A.I. The April meeting was a luncheon given for Mu Phis attending the National Federation of Music Clubs Convention. May was our annual business meeting and installation of officers by Bertha Van Tilburg. Eleanor Godels gave a program of piano solos. Barbara Sterling Remington, our Founder's daughter, is recovering from serious eye surgery. . . Bertha Van Tilburg is gaining slowly. . . Veta Riegel is on a South Sea Isles tour. . . Mary Caldwell attended the District Conference in February.—RUTH S. CHRISTENSEN, *Historian*.

STOCKTON ALUMNAE: An annual event is the potluck dinner held by the Alumnae to which the collegiate chapter is invited. On May 7th the members gathered in the yard of Mrs. Eugene Lancelle for this occasion. The number attending the dinner this year was 40. Following the dinner a program of piano numbers



was presented by Mrs. Charles Schilling, alumnae member. She played Faure's "Second Nocturne" and three selections from Hindemith's *Ludus Tonalis*. At the business meeting of the Alumnae the following officers were installed: Mmes. Stanley Sandelius, president; Archie Grenz, vice-president; Charles Roberts, secretary; Alfred Rageth, treasurer; Charles Schilling, historian; Joseph Martin, chaplain; and Robert Corra, warden. The Senior Breakfast, honoring graduating senior members of Mu Eta Chapter of the College of the Pacific, was held in the garden of Mrs. Lucas Underwood and attending were Mu Eta members, Alumnae Chapter members, patronesses,

and visiting mothers. Wilhelmina Harbert spoke briefly concerning the deep meaning of the sorority: MUSIC—we live and give through it; FRIENDSHIP between members; HARMONY—we should try to build more among ourselves and for others, through service we give on campus and in life, for doing things for others is what stands out most in life. Scholarships and loans were then announced by her for Mu Eta Chapter and then the president of the Alumnae Chapter, announced those of that group. Cynthia Lindhe received a Rhea Norton loan scholarship of \$100 and Tanya Desatoff received a gift of \$25 from the Alumnae.—SARAH SCHILLING, *Historian*.

Members of Mu Phi Epsilon who come to New York are urged and invited to call Circle 6-7310, the Mu Phi Epsilon number; they will receive a warm welcome from sister Mu Phis in that city.

## Remember MΦE In Your Will

### FORM OF BEQUEST

*I bequeath to Mu Phi Epsilon\* the sum of (insert amount) dollars.*

(If the gift is real estate, write "devise" instead of "bequeath" and if both real property and personal property are to be included in the gift, say "devise and bequeath.")

(If it is desired that the gift shall be exempt from inheritance or estate taxes, use this alternative form:)

*I bequeath (or "I devise and bequeath," if real estate is included in the gift) to Mu Phi Epsilon, the sum of (insert amount) dollars.*

*\*Incorporated under the Laws of the State of Ohio, May 18, 1905.*

# Directory of Mu Phi Epsilon

## FOUNDERS

DR. WINTHROP S. STERLING, *Died November 16, 1943*

ELIZABETH MATHIAS FUQUA (MRS. JOHN W.), *Died May 17, 1950*

## PAST NATIONAL PRESIDENTS

ELIZABETH MATHIAS FUQUA (Deceased), A, 1904-05, 07, 08.

MYRTAL PALMER LEACH (Deceased), I, 1905-07

ELFRIDA LANGLOIS KENT (Deceased), Δ, 1908-11

ALICE DAVIS BRADFORD PECK (Deceased), A, 1911-13

ORA BETHUNE JOHNSON (Deceased), Θ, 1913-15

MARY TOWNSLEY PFAU (Deceased), A, 1915-16

ROXIELETTIE TAYLOR YEATES (MRS. JOHN), Θ, 1119 Rumsey Ave., Cody, Wyo., 1916-17

HARRIET THOMPSON WRIGHT (MRS. WILLIAM E.), X, 482 Glen Ave., Fresno, Calif., 1917-20

DORIS BENSON (MRS. WALTER), IA, Spikeswood Farm, Woodruff, Wis., 1920-22

PERSIS HEATON TRIMBLE (Deceased), MA, 1922-26

LUCILLE EILERS BRETTSCHEIDER (MRS. AUGUST, JR.), A, 3426 Morrison Place, Clifton, Cincinnati, Ohio, 1926-28

ORAH ASHLEY LAMKE (MRS. GEORGE W.), Δ, 1327 McCutcheon Rd., Richmond Heights 17, Mo., 1928-30

BERTHA M. (KING) VAN TILBURG (MRS. V. B.), ME, 1485 Sunrise Dr., Vista, Calif., 1930-32, 34-40

DOROTHY ELIZABETH PATON, I, Observatory Lodge, Apt. 304, 1402 Washington Heights, Ann Arbor, Mich., 1932-34

ELIZABETH AYRES KIDD (MRS. A. EUGENE, JR.), ME, New Trier High School, Winnetka, Ill., 1940-42

AVA COMIN CASE (MRS. LEE O.), I, School of Music, University of Michigan, Ann Arbor, Mich., 1942-48

DR. MARGARETTE WIBLE WALKER, MN, 224 N. "G" St., Tacoma 3, Washington, 1948-50

RUTH ROW CLUTCHER (MRS. JOHN), O, 21 Kent Rd., Upper Darby, Pa., 1950-54

ELEANOR HALE WILSON (MRS. P. RAYMOND), T, 2800 39th Ave. W., Seattle 99, Wash., 1954-58

## NATIONAL COUNCIL 1958-1960

*National President*—MISS ROSALIE SPECIALE, ΦM, 560 North First, San Jose 12, Calif.

*National First Vice President*—MISS ELOISE E. HILL, Ψ, The Berkshire, 801 W. Fourth St., Williamsport, Pa.

*National Second Vice President*—GLORIAN BUTLER THOMAS (MRS. BERT), T, 326 Walhalla Road, Columbus 2, Ohio

*National Third Vice President*—JANE

HINKLE McCLUGGAGE (MRS. ZIM I.), T, 3885 Quay St., Wheatridge, Colo.

*National Fourth Vice President*—HELEN PURCELL MAXWELL (MRS. PHILIP), Z, 5510 Sheridan Road, Chicago 40, Ill.

*National Fifth Vice President*—MISS HILDA HUMPHREYS, Σ, 241 Glendale Ave., Highland Park 3, Mich.

*National Editor*—MISS RUTH HAVLIK, ΦP, 532 S.E. Fifth St., Apt. A, Minneapolis 14, Minn.

## NATIONAL EXECUTIVE OFFICE

1139 N. Ridgewood, Wichita 14, Kans.

National Executive Secretary-Treasurer—VIRGINIA PORTER FISER (Mrs. Van E.),  
E, 1139 N. Ridgewood Dr., Wichita 14, Kans.

## MU PHI EPSILON NATIONAL CHAIRMEN

FINANCE: ELEANOR WILSON (Mrs. P. R.), 2800 39th Avenue West, Seattle 99, Wash.

FRIENDSHIP CORNER: LUCILE FERRIS (Mrs. Carl R.), 629 West 70 Terrace, Kansas City, Mo.

MAGAZINE SUBSCRIPTION AGENCY: MISS KATHARINE SHIRLEY, 21 Kent Road, Upper Darby, Pa.

CURTIS REPRESENTATIVE: HELEN RAMAGE (Mrs. John A.), 15724 Turner Ave., Detroit 38, Mich.

MARIE MORISSEY KEITH SCHOLARSHIP AWARD AND ELIZABETH MATHIAS HONOR AWARD: EILENE RISEGARI (Mrs. Silvio), 4102 37th N.E., Seattle 5, Wash.

MΦE ARTIST MEMBERS: MISS DORIS FRERICH, 227 Clermont Road, Ridgewood, New Jersey

MΦE SCHOOL OF MUSIC AT GADS HILL CENTER: *Director:* WINIFRID ERICKSON, 1951 W. Schiller St., Chicago 22, Ill.

*Treasurer:* ALMA E. GRAMBAUER, 1380 Henry St., Des Plaines, Ill.  
*Representative on Settlement Board:* MARIE MUELLER WALLERICH (Mrs. George W.), 511 Forest Ave., Oak Park, Ill.

MUSIC LIBRARIAN: DR. RUTH WATANABE, Sibley Library, Eastman School of Music, Rochester, N. Y.

MUSIC THERAPY: VIOLA ANDERSON (Mrs. Henry O.), 1038 First St. N., Fargo, N. D.

NATIONAL CONVENTION: MISS MARTHA DAY, 822 S. Longwood Ave., Los Angeles 5, Calif.

*Music Chairman:* MISS HARRIET PAYNE, 2628 E. Santa Ysabel, Fullerton, Calif.

RITUAL: LUCILLE BRETTSCHEIDER (Mrs. August, Jr.), 3426 Morriss Place, Clifton, Cincinnati, Ohio.

STERLING-MATHIAS SCHOLARSHIPS AT INTERLOCHEN: MIRIAM McLAUGHLIN (Mrs. R. H.), 1714 Hermitage Rd., Ann Arbor, Mich.

## DISTRICT DIRECTORS

DISTRICT No. 1: MISS JOYCE GIBSON, 600 W. 111th St., 9-C, New York 25, N. Y.

DISTRICT No. 2:

DISTRICT No. 3: MISS MARY JANE HARVEY, 215 Lebanon Ave., Pittsburgh, Pa.

DISTRICT No. 4: EVELYN MORGAN (Mrs. J. E.), 908 Roanoke Road, Cleveland Heights 21, Ohio.

DISTRICT No. 5: MISS KATHRYN NEWHOUSE, 3321 Stoezenfeld, Warren, Mich.

DISTRICT No. 6: RUTH LUCE (Mrs. Donald), 5300 Donjoy Drive, Cincinnati 27, Ohio.

DISTRICT No. 7: MARIAN LAUT BATTY (Mrs. Bernard), 1477 E. 77th St., Indianapolis, Ind.

DISTRICT No. 8: MISS CAMILLA AYERS, 634 Neff Road, Grosse Pointe 30, Mich.

DISTRICT No. 9: BETTY BUCK (Mrs. W. E., Jr.), 750 Cherry Tree Lane, St. Louis 24, Mo.

DISTRICT No. 10: AVANELLE POEHLER (Mrs. J. A.), 3928 Richfield Rd., Minneapolis 10, Minn.

DISTRICT No. 11: MISS JANESE RIDELL, 2945 South 42 St., Lincoln, Neb.

DISTRICT No. 12: MISS META ANN KNECHT, 1308 East 81st Terrace, Kansas City, Mo.

DISTRICT No. 13: ROXEYLYN ROBBINS RHYMER (Mrs. Truett), 6507 Anita St., Dallas 14, Texas.

DISTRICT No. 14: MARILYN COOK PYLE (Mrs. Harold), 1986 South 2600 East Salt Lake City, Utah

DISTRICT No. 15: DOROTHY MURRAY (Mrs. Donald), 1021 E 28th, Spokane, Wash.

DISTRICT No. 16: JANET WILKIE (Mrs. R. F.), 5744 34th N.E., Seattle 5, Wash.

DISTRICT No. 17: PEARL PETERSON (Mrs. H. W.), 13548 N.E. Glisan St., Portland 30, Ore.

DISTRICT No. 18: VIRGINIA BEARDSLEY (Mrs. Fred), 439 Mountain Blvd., Oakland 11, Calif.

DISTRICT No. 19: MISS HARRIET PAYNE, 2628 E. Santa Ysabel, Fullerton, Calif.

## ANNUAL SCHOLARSHIPS

EDWARD MACDOWELL ASSOCIATION  
NATIONAL MUSIC CAMP, Interlochen,  
Mich.  
FRIENDSHIP HOUSE, Washington, D. C.

NEIGHBORHOOD MUSIC SCHOOL, LOS ANGELES, CALIF.  
COMMUNITY MUSIC SCHOOL, INC., St. Louis, Mo.

## NATIONAL AFFILIATIONS

NATIONAL FEDERATION OF MUSIC CLUBS  
MUSIC TEACHERS NATIONAL ASSOCIATION  
MUSIC EDUCATORS NATIONAL CONFERENCE  
NATIONAL ASSOCIATION SCHOOLS OF MUSIC  
PROFESSIONAL PANHELLENIC ASSOCIATION

NATIONAL ASSOCIATION OF AMERICAN COMPOSERS AND CONDUCTORS  
NATIONAL MUSIC COUNCIL  
NATIONAL ASSOCIATION FOR MUSIC THERAPY (*Sustaining member*)  
NATIONAL GUILD OF COMMUNITY MUSIC SCHOOLS (*Auxiliary member*)  
BRAILLE INSTITUTE OF AMERICA COUNCIL OF ORGANIZATIONS

## ATLANTIC PROVINCE

*Province Governor*—NATIONAL FIRST VICE PRESIDENT

BETA—New England Conservatory of Music, Boston, Mass. *President*—Patricia Slattery, 290 Huntington Ave., Boston, Mass.

MU—Brenau College, Gainesville, Ga. *President*—Marie O'Kelly, 537 Academy St., Gainesville, Ga.

PSI—Bucknell University, Lewisburg, Pa. *President*—Katherine Taylor, Box W-66, Bucknell University, Lewisburg, Pa.

MU UPSILON—Eastman School of Music of the University of Rochester, Rochester, N. Y. *President*—Laurie Bolvig, 424 University Ave., Rochester 7, N. Y.

PHI GAMMA—Peabody Conservatory of Music, Baltimore 2, Md. *President*—Tinka Knopf, 12 E. Madison St., Baltimore, Md.

PHI Upsilon—Boston University, Boston 16, Mass. *President*—Gretchen Dirksmeyer, 290 Main St., Winthrop 52, Mass.

PHI Psi—Mary Washington College of the University of Virginia, Fredericksburg, Va. *President*—Joyce Anne Moore, Box 1912, College Station, Fredericksburg, Va.

PHI Omega—Westminster College, New Wilmington, Pa. *President*—Marilyn Moyer, Ferguson Hall, Westminster College, New Wilmington, Pa.

Epsilon Nu—West Virginia University, Morgantown, W. Va. *President*—Betsy Miller, 2925 University Ave., Morgantown, W. Va.

Epsilon Upsilon—Duquesne University, Pittsburgh 19, Pa.—*President*—Dolores A. Grabowski, 110 Bellanca Ave., Pittsburgh 27, Pa.

Epsilon Psi—Juilliard School of Music, New York 27, N. Y. *President*—Lois Woolman, 435 W. 119th, Apt. 5-H, New York 27, N. Y.

Alpha Beta—Hartt College of Music, Hartford, Conn. *President*—Elizabeth Richardson Sagebeer, 189 Wood Pond Rd., West Hartford, Conn.

Alpha Zeta—Radford College, Radford, Va. *President*—Ann Cecil Smith, Box 511, Radford College, Radford, Va.

Alpha Eta—American University, Washington, D. C. *President*—Nadine Smith, 808 Quackenbos St., N.W., Washington 11, D. C.

Alpha Theta—Penn. State Univ., Univ. Park, Pa. *President*—Mary Rohrbeck, 501 E. Hamilton, State College, Pa.

## GREAT LAKES PROVINCE

*Province Governor*—NATIONAL FIFTH VICE PRESIDENT

Gamma—University of Michigan, Ann Arbor, Mich. *President*—Marlane Paxson, 3509 E. Couzens Hall, University of Michigan, Ann Arbor, Mich.

Epsilon—University of Toledo, Toledo 6, O. —*President*—Ann Makowski (Mrs. Joseph), 1625 Campus Rd., Toledo 6, O.

Sigma—Northwestern University, Evanston, Ill. *President*—Dolores Normann, 726 University, Evanston, Ill.

Phi—Mount Union College, Alliance, O. *President*—Janice Black, Elliot Hall, Mt. Union College, Alliance, O.

Atlanta Alumnae Chapter—*President*—Willia B. Lowrance (Mrs. Robt.), 1184 Hancock Drive N.E., Atlanta 6, Ga.

Baltimore Alumnae Chapter—*President*—Nyla Wright Ruppensberger (Mrs. G. A.), 954 Dulaney Valley Rd., Apt. 2, Towson 4, Md.

Boston Alumnae Chapter—*President*—Virginia Sellars Cochrane (Mrs. Robert), 22 Borland St., Brookline, Mass.

Connecticut Valley Alumnae Chapter—*President*—Madelyn Robb (Miss), 187 Broad St., Hartt College of Music, Hartford, Conn.

Gainesville Alumnae Chapter—*President*—Marguerite Ringo (Mrs. B. B.), 452 N. Prior St., Gainesville, Ga.

Miami Alumnae Chapter—*President*—Mary Lou Weaver (Mrs. George), 3621 N.W. 15th St., Miami, Fla.

New York Alumnae Chapter—*President*—Bettylou Scandling, 62 West 56th, New York 19, N. Y.

Philadelphia Alumnae Chapter—*President*—Adelia A. Cubbon, 326 Old Forrest Rd., Carroll Park, Philadelphia 31, Pa.

Pittsburgh Alumnae Chapter—*President*—Barbara Rankin, 235 Summit Ave., Pittsburgh 2, Pa.

Rochester Alumnae Chapter—*President*—Gladys Rossdeutscher, 691 E. Main St., Rochester 5, N. Y.

Washington Alumnae Chapter—*President*—Shirley Schleter (Mrs. J. C.), 4704 Strathmore Ave., Garrett Park, Md.

Mu Xi—American Conservatory of Music, Chicago 4, Ill. *President*—Patricia Miller, 410 S. Michigan Ave., Chicago 5, Ill.

Mu Phi—Baldwin-Wallace College, Berea, O. *President*—Marcia Kinder, Findley Hall, Baldwin-Wallace College, Berea, O.

Phi Kappa—Wayne State University, Detroit, Mich. *President*—Beverly Adams, 16538 Normandy, Detroit 21, Mich.

Phi Omicron—Cleveland Institute of Music, Cleveland, O. *President*—Julian Luiza Burke, 2029 E. 40th St., Apt. 405, Cleveland, O.

Phi Sigma—De Paul University, Chicago, Ill. *President*—Carol Miller, 1725 North Shore Ave., Chicago 26, Ill.

Epsilon Lambda—Eastern Michigan College, Ypsilanti, Mich. *President*—Nancy Cook, 10010 Rawsonville Rd., Willis, Mich.

Epsilon Xi—University of Illinois, Urbana, Ill. *President*—Lois Doniger, 1005 S. Lincoln, Urbana, Ill.

Ann Arbor Alumnae Chapter—*President*—Miriam McLaughlin (Mrs. Rowland), 1714 Hermitage Road, Ann Arbor, Mich.

Central Chicago Alumnae Chapter—*President*—Mary Ruth Craven, 1423 E. 53rd St., Chicago 15, Ill.

Chicago Alumnae Chapter—*President*—Eugenia Wright Anderson (Mrs. R. S.), 7 Lawndale Ave., Hammond, Ind.

Cleveland Alumnae Chapter—*Presi-*

*dent*—Evelyn Treger Morgan (Mrs. J. E.), 908 Roanoke Rd., Cleveland Heights 21, O.

Cleveland Heights Alumnae Chapter *President*—Eunice Podis Weiskopf (Mrs. R.), 2653 Ramsey Rd., Cleveland 24, O.

Detroit Alumnae Chapter—*President*—Ellen Jones (Mrs. Robert), 18475 Maryland, Detroit 41, Mich.

Evanston-North Shore Alumnae Chapter—*President*—Mary Carter Jenkins (Mrs. T. A.), 1319 Gregory Ave., Wilmette, Ill.

Milwaukee Alumnae Chapter—*President*—Eunice Groth (Mrs. Waldemar), 4824 W. Townsend, Milwaukee 16, Wis.

Toledo Alumnae Chapter—*President*—Ruth Werchman (Mrs. John), 648 Winthrop St., Toledo 10, O.

Urbana-Champaign Alumnae Chapter—*President*—Marian Emilie Soule (Mrs. Don M.), 1207 W. Park Ave., Champaign, Ill.

## EAST CENTRAL PROVINCE

*Province Governor*—NATIONAL SECOND VICE PRESIDENT

Zeta—De Pauw University, Greencastle, Ind. *President*—Margaret McElwain, 202 E. Hanna, Greencastle, Ind.

Kappa—Jordan College of Music of Butler University, Indianapolis, Ind. *President*—Roberta E. Nay, 5153 Atherton North Drive, Indianapolis 19, Ind.

Mu Pi—Ohio Wesleyan University, Delaware, O. *President*—Gloria Fox, 249 No. Washington St., Delaware, O.

Phi Theta—Lindenwood College, St. Charles, Mo. *President*—Karen Glaser, Lindenwood College, St. Charles, Mo.

Epsilon Gamma—Belhaven College, Jackson, Miss. *President*—Linda Byrd, Belhaven College, Jackson, Miss.

Epsilon Zeta—Hendrix College, Conway, Ark. *President*—Sara Carl Lee, Hendrix College, Conway, Ark.

Epsilon Kappa—Southern Illinois University, Carbondale, Ill. *President*—

Mary Jo Cozad, Woody Hall, C-215, Southern Illinois University, Carbondale, Ill.

Epsilon Omicron—Indiana University, Bloomington, Ind. *President*—Elizabeth Kemmer, 1018 E. 3rd St., Bloomington, Ind.

Epsilon Tau—Washington University, St. Louis 5, Mo. *President*—Kathryn Walker Huelster (Mrs. Richard), 5560 Clemens, 3 South, St. Louis 12, Mo.

Alpha Alpha—The College-Conservatory of Music, Cincinnati, O. *President*—Phyllis Willis, College-Conservatory of Music, Cincinnati 19, O.

Alpha Gamma—Mississippi Southern College, Hattiesburg, Miss. *President*—Peggy Lewis, Station A, Box 758, Mississippi Southern College, Hattiesburg, Miss.

Jackson Alumnae Chapter—*President*—Sarestelle Jones Sigrest (Mrs. M. L.), Flora, Miss.

CINCINNATI ALUMNAE CHAPTER—*President*—Roma Carpenter (Mrs. Edwin), 6161 Dryden, Cincinnati 13, O.

COLUMBIA ALUMNAE CHAPTER—*President*—Marjorie M. Orton, 1607 Amelia St., Columbia, Mo.

COLUMBUS ALUMNAE CHAPTER—*President*—Agnes Thompson Wolf from (Mrs. M. L.), 168 Fallis Rd., Columbus 14, O.

DAYTON ALUMNAE CHAPTER—*President*—Wilma Jean Meckstroth (Mrs. Robert), 2500 Parklawn Dr., Dayton 40 (Kettering), O.

EVANSVILLE ALUMNAE CHAPTER—*President*—Claudia Hyde (Mrs. Melvin), 1700 Lincoln Ave., Evansville, Ind.

INDIANAPOLIS ALUMNAE CHAPTER—*President*—Rachel Boothroyd, 732 E. 33rd St., Indianapolis 5, Ind.

ALPHA KAPPA—Conservatory of Univ. of Kansas City—*President*—

KANSAS CITY ALUMNAE CHAPTER—*President*—Irene Haynes Sees (Mrs. Emil A.), 435 W. 58th Terrace, Kansas City 13, Mo.

KANSAS CITY EVENING ALUMNAE—*President*—Dolores Mae Waters, 3220 Karnes Blvd., Kansas City 11, Mo.

ST. LOUIS ALUMNAE CHAPTER—*President*—Dorothy Smutz (Mrs. Harold T.), 619 Hollywood Place, Webster Groves 19, Mo.

ST. LOUIS COUNTY ALUMNAE CHAPTER—*President*—Laura Marriott, 436 Carrswold Drive, Clayton 5, Mo.

## NORTH CENTRAL PROVINCE

*Province Governor*—NATIONAL FOURTH VICE PRESIDENT

OMEGA—Drake University, Des Moines, Ia. *President*—Beth Jasper, 2700 University, Des Moines, Ia.

MU ALPHA—Simpson College, Indianola, Ia. *President*—Mary Elouise Krabel, Mary Berry Hall, Simpson College, Indianola, Ia.

MU GAMMA—University of Nebraska, Lincoln, Neb. *President*—Cynthia Hansen, 1619 "R" St., Lincoln, Nebr.

MU EPSILON—Minneapolis College—MacPhail School of Music. *President*—Gloria Mattson (Mrs. Kenneth), 5424 27th Ave. So., Minneapolis, Minn.

MU TAU—University of South Dakota, Vermillion, S. D. *President*—Betty Moorhead, East Hall, State University of South Dakota, Vermillion, S. D.

MU PSI—Coe College, Cedar Rapids, Ia. *President*—Wilma Cox, Voorhees Hall, Coe College, Cedar Rapids, Ia.

PHI ZETA—Morningside College, Sioux City, Ia. *President*—Carol Anne Nickel, 3318 Vine Ave., Sioux City, Ia.

PHI IOTA—Concordia College, Moorhead, Minn. *President*—Ruth Langemo, Box 356, Concordia College, Moorhead, Minn.

CEDAR RAPIDS ALUMNAE CHAPTER—*President*—Mardean Holveck (Mrs.) F. C.), 1014 Maplewood Dr. N.E., Cedar Rapids, Ia.

DES MOINES ALUMNAE CHAPTER—*President*—Frances Wellman (Mrs. Russell), 3848 River Oaks Drive, Des Moines, Ia.

FARGO ALUMNAE CHAPTER—*President*—Hildur Shaw (Mrs. W. S.), 1319 S. 9th St., Fargo, N. D.

LINCOLN ALUMNAE CHAPTER—*President*—Irene Barber (Mrs. De Witt), 2315 S. 14th St., Apt. D, Lincoln, Neb.

MINNEAPOLIS ALUMNAE CHAPTER—*President*—Estelle Wylie (Mrs. E. C.), 6030 Upton So., Minneapolis 10, Minn.

RICHFIELD ALUMNAE CHAPTER—*President*—Aldys Nelson, 6701 1st Ave. So., Minneapolis 23, Minn.

## SOUTH CENTRAL PROVINCE

*Province Governor*—NATIONAL PRESIDENT

XI—University of Kansas, Lawrence, Kans. *President*—Marianne L. Marshall, 2301 Massachusetts, Lawrence, Kans.

MU THETA—University of Texas, Austin, Tex. *President*—Emma Frances DeShong, 205 Carothers Dormitory, Austin, Tex.

MU KAPPA—University of Oklahoma, Norman, Okla. *President*—Carol Ann Cook, 736 S. Lahoma, Norman, Okla.

MU MU—Kansas State College, Manhattan, Kans. *President*—Carol Korinek, Southeast Hall, Kansas State College, Manhattan, Kans.

MU RHO—Lamont School of Music at the University of Denver, Denver, Colo. *President*—Sharon Holdaway, 2290 So. Vinc. #728, Denver 10, Colo.

MU CHI—Southern Methodist University, Dallas, Tex. *President*—Lou Ann Williams, 5519 Matalee, Dallas, Tex.

PHI EPSILON—College of Emporia, Emporia, Kans. *President*—Sofia Strand, Dunlap Hall, College of Emporia, Emporia, Kans.

PHI XI—Baylor University, Waco, Tex. *President*—Ann Owens, 218 Allen Hall, Baylor University, Waco, Tex.

PHI PI—University of Wichita, Wichita, Kans. *President*—Shirley Gilley, 1950 S. Main, Wichita, Kans.

PHI TAU—North Texas State College, Denton, Tex. *President*—Jamie Eloise Ray, Bruce Hall, Box 5639, North Texas Station, Denton, Tex.

EPSILON EPSILON—Texas Christian University, Ft. Worth, Tex. *President*—Rubyrae Foster, Box 862, Texas Christian University, Ft. Worth, Tex.

EPSILON MU—University of Utah, Salt Lake City, U. *President*—Judith Baur, 1387 E. First South, Salt Lake City, Utah

EPSILON PI—Texas Technological College, Lubbock, Tex. *President*—Betty Ann Townsend, 2416 3rd St., Lubbock, Tex.

EPSILON PHI—Friends University, Wichita, Kans. *President*—Charmaine Louise Ioerger, R.R. #2, Cheney, Kans.

EPSILON CHI—Brigham Young University, Provo, U. *President*—Jean Nesbitt, 150 E. 7th North, Provo, U.

ALPHA IOTA—Midwestern Univ., Wichita Falls, Tex. *President*—Ann Amour, 4682 University Ave., Wichita Falls, Tex.

DALLAS ALUMNAE CHAPTER—*President*—Patricia Crenshaw, 1523 Cedar Hill, Dallas, Tex.

DENVER ALUMNAE CHAPTER—*President*—Hazeltine Larson (Mrs. Wilbur), 3795 Eudora St., Denver, Colo.

FORT WORTH ALUMNAE CHAPTER—*President*—Lillian J. Eley (Mrs. H. O.), 5212 Trail Lake Dr., Fort Worth 15, Tex.

OKLAHOMA CITY ALUMNAE CHAPTER—*President*—Jennie Cleaver (Mrs. William), 1301 S.E. 41st St., Oklahoma City, Okla.

SALT LAKE CITY ALUMNAE CHAPTER—*President*—Charlotte June Burgess (Mrs. C. E.), 2259 Downington, Salt Lake City, Utah

TULSA ALUMNAE CHAPTER—*President*—Frances Manning Hassler (Mrs. A. R.), 2148 So. Urbana, Tulsa 14, Okla.

WICHITA ALUMNAE CHAPTER—*President*—Virginia Randle Loveland, 434 Lexington, Wichita 8, Kans.

## PACIFIC NORTHWEST PROVINCE

*Province Governor*—NATIONAL EDITOR

NU—University of Oregon, Eugene, Ore. *President*—Mira Fronmayer, 791 E. 15th, Eugene, Ore.

TAU—University of Washington, Seattle 5, Wash. *President*—Lou Ann Wernli, 7224 29th N.E., Seattle, Wash.

MU BETA—Washington State College, Pullman, Wash. *President*—Jeanette Stein, Regent's Hill Dormitory, State College of Washington, Pullman, Wash.

MU ZETA—Whitman College, Walla Walla, Wash. *President*—Ardeth Barnfield, Whitman College, Walla Walla, Wash.

PHI LAMBDA—Willamette University, Salem, Ore. *President*—Barbara Rich Dixon, Alpha Chi Omega, Willamette University, Salem, Ore.

EPSILON DELTA—Lewis and Clark College, Portland 1, Ore. *President*—Mary Evelyn Hetzel, Akin Hall, Rm. 27, Lewis and Clark College, Portland 19, Ore.

EPSILON THETA—Linfield College, McMinnville, Ore. *President*—Janet Good, 1005 S. Davis, McMinnville, Ore.

EPSILON IOTA—Eastern Washington College of Education, Cheney, Wash. *President*—Katheryn Patricia Bannister (Mrs. D'Arcy), E. 1615 Joseph, Spokane, Wash.

EPSILON RHO—Montana State University, Missoula, Mont. *President*—Marie Vance, 601 Daly Ave., Missoula, Mont.

EPSILON SIGMA—Pacific Lutheran College, Parkland, Wash. *President*—Ruth Berhow, North Hall C-16, Pacific Lutheran College, Tacoma 44, Wash.

EUGENE ALUMNAE CHAPTER—*President*—Ruth Nerbas (Mrs.), 1400 Villard St., Eugene, Ore.

PORTLAND ALUMNAE CHAPTER—*President*—Nellie Tholen, 315 N.E. 41st Ave., Portland, Ore.

SALEM ALUMNAE CHAPTER—*President*—Edith Fairhour Gunnar (Mrs. Peter), 1225 Hillendale, Salem, Ore.

SEATTLE ALUMNAE CHAPTER—*President*—Billie McCleary Jones (Mrs. W. M.), 2814 W. Lynn, Seattle 99, Wash.

SPOKANE ALUMNAE CHAPTER—*President*—Joan Chisholm Weeks (Mrs. John L.), E 3510 16th Ave., Spokane, Wash.

TACOMA ALUMNAE CHAPTER—*President*—Persis Reynolds Shook (Mrs. James E.), 915 N. Washington, Tacoma 6, Wash.

## PACIFIC SOUTHWEST PROVINCE

*Province Governor*—NATIONAL THIRD VICE PRESIDENT

MU ETA—College of the Pacific, Stockton, Calif. *President*—Dorothy Busher, Epsilon Lambda Sigma, College of the Pacific, Stockton, Calif.

MU NU—University of Southern California, Los Angeles, Calif. *President*—Sandy McLarty, 1527 Shenandoah St., Los Angeles 35, Calif.

PHI MU—San Jose State College, San Jose, Calif. *President*—Karen Becker, 342 S. 11th, Apt. 4, San Jose, Calif.

PHI NU—University of California at Los Angeles, Los Angeles, Calif. *President*—Carol Bigenho (Mrs. Ed.), 5750 W. 74th, Los Angeles 45, Calif.

PHI CHI—Fresno State College, Fresno, Calif. *President*—Rita Weeks, 414 Fifth St., Clovis, Calif.

EPSILON ETA—George Pepperdine College, Los Angeles, Calif. *President*—Joanne Van Daalen, 6381 W. 78th St., Los Angeles 45, Calif.

EPSILON OMEGA—San Francisco State College, San Francisco, Calif. *President*—Marilyn Wilbur, 415 Shields St., San Francisco 27, Calif.

ALPHA DELTA—Sacramento State College, Sacramento, Calif. *President*—Patricia Wittig Wood, 2409 58th St., Sacramento, Calif.

ALPHA EPSILON—College of the Holy Names, Oakland, Calif. *President*—Helen Kramm, 3500 Mountain Boulevard, Oakland 19, Calif.

ALBUQUERQUE ALUMNAE CHAPTER—*President*—Ruthmary Crowell (Mrs. Norton B.), 10901 Ralph Ave., Albuquerque, N. M.

BEVERLY HILLS ALUMNAE CHAPTER—*President*—Thyra Snyder, 2818½ W. 85th St., Inglewood 4, Calif.

FRESNO ALUMNAE CHAPTER—*President*—Jane C. Bird (Mrs. C. Wesley), 617 E. Pine, Fresno, Calif.

LONG BEACH ALUMNAE CHAPTER—*President*—Jeanne Roodhouse (Mrs. Ben), 3719 Roxanne Dr., Long Beach 8, Calif.

LOS ANGELES ALUMNAE CHAPTER—*President*—Edith Reeves Habig (Mrs. F. A.), 228 So. Occidental Blvd., Los Angeles 57, Calif.

PALO ALTO ALUMNAE CHAPTER—*President*—Sue Jones Campbell (Mrs. B. J.), 530 Fairfax Ave., San Mateo, Calif.

PASADENA ALUMNAE CHAPTER—*President*—Louise Paulson (Mrs. A. B.), 2017 Milan Ave., South Pasadena, Calif.

SACRAMENTO ALUMNAE CHAPTER—*President*—Jane Schlosser Cox (Mrs. John R.), 1411 Las Salinas Way, Sacramento 25, Calif.

SAN DIEGO ALUMNAE CHAPTER—*President*—Louise Ridgway Milner (Mrs. Carl), 4315 Maple Ave., La Mesa, Calif.

SAN FERNANDO VALLEY ALUMNAE CHAPTER—*President*—Mary Anna Essel (Mrs. Donald J.), 19518 Schoolcraft St., Reseda, Calif.

SAN FRANCISCO ALUMNAE CHAPTER—*President*—Muriel Tuttle, 7135 Gladys St., El Cerrito, Calif.

SAN JOSE ALUMNAE CHAPTER—*President*—Violet Thomas (Miss), 319 So. 5th, Apt. 5, San Jose, Calif.

STOCKTON ALUMNAE CHAPTER—*President*—Dorothy Sandelius (Mrs. Stanley), 2034 W. Inman St., Stockton, Calif.

## PLEASE NOTE:

MEMBERS MAY REQUEST COPIES OF THE BUSINESS ISSUE BY WRITING TO N.E.O.

## Change of Name and Address

*Must be sent to N.E.O.—1139 North Ridgewood Drive, Wichita 14, Kansas*  
 Post Office will not forward copies unless extra postage is sent. Duplicate copies cannot be issued to those who fail to send notice of their change of name or address.

### USE THIS FORM

Chapter of Initiation..... Date of Initiation.....

Name at time of initiation.....  
 (Family) (First) (Middle)

Present Name .....  
 (Family) (First) (Middle)

Husband's Name, if married.....  
 (Family) (First) (Middle)

Former Address .....

New Address .....

# Balfour: The Mark of Elegance



## Balfour Favor Catalog

A special new catalog of party favors illustrates many new and exclusive Balfour favors in a wide price range.

Write for **FREE** copy indicating your chapter office.

Available to chapter officers and social chairmen.

## The Balfour Blue Book

A completely new catalog presenting in color a special selection of rings and fine gift items.

Select your gifts for all occasions as well as personal accessories from this beautiful catalog.

-----Date  
 L. G. Balfour Co. ..... Mu Phi Epsilon  
 Attleboro, Mass.  
 Blue Book  
 Ceramic Flyer  
 Knitwear Flyer  
 Paper Napkin Flyer  
 Favor Catalog (note chapter office)  
 Name .....  
 Address .....

## in Fine Jewelry

Your insignia, created by the skilled hands of Balfour craftsmen, is the mark of elegance and excellence. Wear your pin proudly to identify you with your fraternity.

### Price List

BADGES		
Plain, raised lyre.....	\$ 6.75	
Plain, flat lyre.....	5.50	
Close set pearl.....	11.00	
Crown set pearl.....	15.75	
Crown pearl, 3 diamonds.....	41.00	
Crown pearl, 6 diamonds.....	65.00	
Crown set all diamond.....	134.00	
Crown set with 3 amethysts and 2 pearls in each corner.....	17.25	
Crown set with 2 amethysts and 3 pearls in each corner.....	16.75	
*Raised Lyre on badges, additional.....	1.25	
White gold badges:		
\$2.00 additional for plain badges.		
\$3.00 additional for jeweled badges.		
Recognition pin, 10K gold.....	1.75	
Pledge pin, sterling.....	1.00	
Greek letter monogram pendant, 10K gold: no chain.....	2.25	
with gold filled chain.....	3.00	
PATRON OR PATRONESS PINS		
Nugget border.....	4.50	
Crown set pearl.....	14.25	
Close set pearl.....	11.75	
Music Award Charm, sterling.....	2.00	
18" sterling neck chain.....	1.00	
Music Award Charm, 1/10K gold filled.....	3.00	
18" 1/20 10K gold filled chain.....	1.50	
18" 10K gold chain.....	3.50	
GUARD PINS		
	Single Letter	Double Letter
Plain gold.....	\$2.75	\$ 4.25
Close pearl.....	5.50	9.25
Crown pearl.....	7.75	14.00
White gold guards:		
Miniature cofa guard, 10K.....	\$2.75	
\$1.00 additional for plain guards.		
\$2.00 additional for jeweled guards.		

Orders for official insignia should be placed with Mu Phi Epsilon National Executive Office.  
 NOTE: The small size guards are no longer available.  
 10% Federal Tax must be added to the above prices, as well as any State Tax in effect.

Official Jeweler to  
 Mu Phi Epsilon

*L. G. Balfour Company*  
 ATTLEBORO, MASSACHUSETTS

In Canada . . . L. G. Balfour Co., Ltd.  
 Toronto and Montreal

1959-60  
 Calendar

# ALUMNAE CHAPTERS

N.E.O. Address: 1139 N. Ridgewood, Wichita 14, Kan.

National Editor Address: 532 S.E. Fifth, Apt. A, Minneapolis 14, Minn.

**SEPTEMBER:** President: Call meeting of chapter officers to make plans for year. Corresponding Secretary: Report immediately to N.E.O. address changes of all officers and chapter members, on official form. Order supplies for year. Send name and address of chapter Magazine Chairman to Katharine Shirley, 21 Kent Road, Upper Darby, Pa.

**NOVEMBER 1:** DEADLINE for ordering stationery for fall delivery.

**NOVEMBER 13:** Founders Day, Treasurer: Send voluntary contribution of 56c for each chapter member to N.E.O., enclosing Form No. 3.

**DECEMBER 1:** President: Return fall report letter to National Third Vice President with a copy to your Province Governor.

**JANUARY 15:** Treasurer and Corresponding Secretary. DEADLINE for sending annual national taxes (\$5.00 ea.) to N.E.O., enclosing 2 copies of Forms Nos. 1 and 2. Renew TRIANGLE subscriptions for chapter members on that form too.

**FEBRUARY:** Elect new chapter officers. (Officers do not need to be installed until May.)

**MARCH 1:** DEADLINE for returning to N.E.O. on official forms, eight copies of list of new chapter officers. **NO EXCEPTIONS.**

**APRIL 1:** DEADLINE for sending glossy, and official form of chapter Convention Delegate to Esther Wiedower, 737 S. Hill Street, Los Angeles, Calif.

**APRIL 1:** DEADLINE for ordering stationery for spring delivery.

**APRIL 1:** President: Send spring report form to National Third Vice President with a copy to your Province Governor.

**MAY 31:** Before this date, send all chapter contributions for national projects to N.E.O.

**JUNE 1:** President, Corresponding Secretary and Treasurer. DEADLINE for returning annual reports to N.E.O.

**HISTORIAN:** The following are deadline dates for TRIANGLE materials. Send newsletter and other materials at least once during year to National Editor.

August 1—For Summer issue of THE TRIANGLE

October 1—For Fall issue of THE TRIANGLE

December 1—For Winter issue of THE TRIANGLE. Deadline for required newsletter.

March 1—For Spring issue of THE TRIANGLE

# The Mu Phi Epsilon

# Creed



*BELIEVE in Music, the noblest of all the arts, a source of much that is good, just, and beautiful; in Friendship, marked by love, kindness, and sincerity; and in Harmony, the essence of a true and happy life.*

*I believe in the sacred bond of Sisterhood, loyal, generous and self-sacrificing, and its strength shall ever guide me in the path that leads upward toward the stars.*

—RUTH JANE  
KIRBY,  
Omega