

401.57 # 1

the  
**TRIANGLE**  
of  
**MU PHI EPSILON**



Janese Ridell

**OCTOBER 1962**

Winthrop S. Sterling  
Elizabeth Mathias Fuqua

NOVEMBER 3, 1903

Living in you now are the ideals of our Founders who created for us the ideal of a life dedicated to others through music.

More enduring than architectural edifices of the world is the heritage of Music, Friendship and Harmony given to us by Winthrop S. Sterling and Elizabeth Mathias. Your loyalty and service to others through Music will be projected into the future and live forever.

You are the heir to the purposes and aims of our sorority given to us by our Founders.



# The Triangle

OCTOBER • 1962  
VOLUME 57 • NUMBER 1

## OF MU PHI EPSILON

### Contents . . .

	PAGE
Accomplishments of 36th National Convention . . . . .	2
Sterling Achievement Winner . . . . .	5
Province Achievement Medalists . . . . .	6
Awards . . . . .	8
Gads Hill Travels to Convention . . . . .	10
New Council 1962-64 . . . . .	12
Convention Delegates . . . . .	14
"Echoes" . . . . .	18
Convention Artists and Programs . . . . .	20
"If it were not for Song" . . . . .	24
"A Mu Phi Epsilon Chorale" by June Weybright Reeder . . . . .	25
Sing Along With Mu Phi . . . . .	28
Europe Bound . . . . .	29
Alla Breve . . . . .	30
Book Shelf . . . . .	32
More Convention Music . . . . .	34
Music Therapist Initiated . . . . .	36
Desk Memo . . . . .	37
Chapter Newsletters . . . . .	38
Directory . . . . .	44
Shopping List . . . . .	46
Collegiate Chapter Calendar . . . . .	47
Alumnæ Chapter Calendar . . . . .	48

PEARL ALLISON PETERSON • NATIONAL EDITOR

THE TRIANGLE of Mu Phi Epsilon, national professional music sorority, is published quarterly, in October, January, March and May. George Banta Company, Inc., is official printer and publisher at Curtis Reed Plaza, Menasha, Wisconsin. The subscription price is \$1.50 a year, single copies, 40 cents. All copy is to be sent to the Editor, Pearl Allison Peterson, 13548 N.E. Glisan, Portland 30, Oregon, observing deadlines which are the 15th day of July, October, December and March. Business Correspondence and Subscriptions to be sent to National Executive Office, 1139 N. Ridgewood Drive, Wichita 8, Kansas.

Second class postage paid at Menasha, Wisconsin. Printed in the United States of America. Application for transfer of location of original second class entry from St. Paul, Minn., to Menasha, Wisconsin has been made.

POSTMASTER: Send all changes of address to 1139 N. Ridgewood Drive, Wichita 8, Kansas.

# Accomplishments of 36th National Convention

- New Projects

- Grants

*By coming together at Convention . . .  
for seeking out  
giving to  
learning from each other  
may we discover through the power of  
music and friendship,  
the ways to help others . . .  
. . . to know and enrich ourselves . . .  
and may this bring the peace and wisdom  
of the spheres . . .*

With these words from the presiding officer, Rosalie V. Speciale, national president of Mu Phi Epsilon 1958-62, the 36th National Convention was launched in the Memorial Union of the University of Indiana, Bloomington, Indiana, on June 26.

Over four hundred delegates, national officers, and member visitors were inspired by the *Spheres of Music*

theme as they experienced four and a half days of business sessions, music, luncheons, instruction periods, dinners, more music, panel discussions, guest speakers, and yet more music. Satisfaction was experienced in the development of new undertakings, the continued support of established projects, and the granting of recognition for scholastic and service attainments. It

- Funds Established

- Honors

is with pride that we review the accomplishments of the delegate body which represented over 24,000 members of Mu Phi Epsilon.

seas stop arriving seattle fair shalom kasi."<sup>2</sup>

#### GRANTS AND AIDS

A subscription of \$1,000 was approved for the Lincoln Center For Performing Arts now in construction in New York City. A non-profit organization has been created to plan, build, and operate this Center for the performing arts. There will be five buildings which will house the New York Philharmonic, the Juilliard School, the Metropolitan Opera, and the newly formed Repertory Theater Association. It will also include a theater for the dance and operetta, a chamber music and recital hall, and a Library-Museum for the Performing Arts.

The cost will approximate \$142 million of which \$102 million will be raised through private gifts from individual corporations and foundations. Mu Phi Epsilon is proud to be among the early contributors.

#### APPROVAL OF INTERNATIONAL CHAPTER

Extension of our sorority into the international area was approved by the Convention when it voted to charter a Mu Phi Epsilon chapter at the Philippine Women's University in Manila. This will be our first international one, and the installation is planned for November. Arrangements will be in charge of Lucrecia Kasilag,<sup>1</sup> Dean of the College of Music and Fine Arts at that institution. Lucrecia, an initiate of Mu Upsilon, was on tour with the famed Bayanihan Dancers at the time of Convention, and when word reached her in Israel her reply to the delegates was immediate: "Heartiest greetings wishes for fruitful convention profound thanks approval manila chapter hope worthy bearer mu phi creed over-

<sup>1</sup> TRIANGLE, January, 1962, pp. 19-20.

<sup>2</sup> "Peace to you" (Hebrew).

The first of the five buildings to be completed will be the Philharmonic Hall now under construction with opening date expected this year. Completion of the Center is planned for 1964.

\$1,000 was approved as a contribution to the National Cultural Center in Washington, D.C. This will be a national monument dedicated to music and the arts. Mu Phi Epsilon will have permanent recognition in this Center. It is still in the planning stage.

A \$1,000 contribution was also approved for the Los Angeles Music Center, also in the planning stage.

The Institute of Logopedics in Wichita, Kansas, will receive \$300. This is a new Music Therapy contribution from Mu Phi Epsilon.

#### MEMORIAL FOUNDATION ESTABLISHED

By combining the former Memorial Fund and the Friendship Fund, what will be known as a MEMORIAL FOUNDATION was established by vote of the Convention. There are many advantages to be gained by the new set-up and more details will be given in the near future. Contributions will be made, designated and disbursed in the same way as previously under the former funds.

#### STUDENT DEVELOPMENT FUND

Delegates approved the establishment of a Student Development Exchange Fund for the purpose of giving our young artists wider performance opportunities. This being a new departure the project will take time to develop.

#### PROJECTS EXPANDED

Our project at Silliman University in the Philippines received an additional \$500 allotment. Charlotte Reidesel, Φ Ω, who spent the past year at Silliman, gave an interesting and meaningful report, concluding with a group of native songs. In the past year over half a ton of music has been sent to Silliman, and 254 books have gone to "Books for Asia" from our chapters. Gads Hill School of Music, our first philanthropy, continues to receive our support, mainly through our magazine agency.



CHARLOTTE RIEDESEL, Φ Ω  
in Philippine dress.

#### HONORS

Citations of Merit were presented at the Honors Dinner to the following:

OLGA KOUSSEVITSKY—for her outstanding contribution to American Music through her directorship of the International Music Fund.

AMY WORTH—for her outstanding contributions to Mu Phi Epsilon and to the world of music through her compositions.

HERMAN B. WELLS—retiring president of Indiana University, who has contributed much to the cultural life of America through his encouragement, recognition, and advancement of the inestimable values of the Fine Arts.

THE SOCIETY FOR THE PUBLICATION OF AMERICAN MUSIC—in recognition of the significant part it has played since its founding in 1919, and its publishing of chamber music by American composers.

## Sterling Achievement Award

To Senior for outstanding scholarship and professional activity selected from province nominees, cash award to each nominee.

#### Member of:

Boston Univ. Symphony (principal)  
Boston Univ. Chamber Orchestra  
(principal)  
Fine Arts Chamber Orchestra  
Brockton Civic Symphony Orchestra  
Boston Univ. Graduate String Quartet  
New York City Symphony Orchestra

#### Soloist:

Boston Univ. Symphony  
in recital  
Boston TV

#### Honors:

Deans List  
Senior Achievement Award from Boston  
Professional Panhellenic Assn.  
Graduated cum laude from Boston Univ.  
School of Fine and Applied Arts  
scholarship (four years)

#### Organizations:

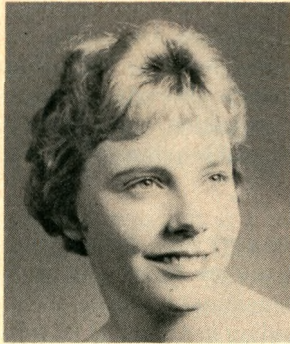
Mu Phi Epsilon (president)  
Pi Kappa Lambda  
Honor Dormitory  
MENC

#### Miscellaneous:

three Student Body Chairmanships  
dormitory counselor  
chapter program planning  
student government  
cello teacher



Winner: MARGARET P. BARSTOW  
Phi Upsilon, Boston Univ.  
Atlantic Province  
Cellist



ELIZABETH HAAN  
M T  
St. U. So. Dakota  
North Central Province

## Achievement Winners

The outstanding candidate of each Province receives this award and this year East Central had a tie. While Scholarship average was high for all, Lois Fry Hochstetler, Mu Phi, graduated magna cum laude with a 3.89 in a class of 282.

Participation in campus music organizations listed orchestra, band, choral groups, special ensembles, accompanying, and outstanding solo performances. Beth Haan, Mu Tau, played violin in orchestra, tenor saxophone in band, sang in choir when she wasn't accompanying it, was church organist, and directed the 1962 Swing-out. Ann Lord, Epsilon Omicron, was an outstanding church organist. Sharon Tebbencamp, Xi, sang lead roles in three campus productions. Barbara Allen, Alpha Gamma, sang in cast of several shows and was stage manager for three operatic productions.

Outstanding piano soloists were Sharon Zlatnik, Mu Zeta, who performed with Twin Falls, Ida., Symphony, and Marilyn Mangold, Mu Nu, who was soloist with the Kern, Calif., Philharmonic.

All but one served as chapter president in addition to holding one or two previous offices and/or chairmanships.

Membership was listed in the following honorary and professional organizations: Phi Beta Kappa (scholastic), Pi Kappa Lambda (music), Alpha Lambda Delta (freshman women), Tau Beta Sigma (band, women), Phi Kappa Phi (scholastic), Mortar Board (leadership), Arrows (freshman women), Spurs (sopho-

more women), AGO (organists), Deans List, Honors, and MENC. Barbara Allen and Sharon Zlatnik were listed in *Who's Who in American Colleges and Universities*.

Student Body and Student Affairs offices and chairmanships were held by several and all were active in community and civic affairs, giving programs for clubs, churches, hospitals, etc. Sharon T. was member of USO tour to Berlin and Belgrade and Barbara was chosen representative to England, Ireland, and Scotland by the Girl Scouts in 1960.

In the field of music composition Beth performed at a South Dakota Original Composition Contest and Sharon Z. composed background music for campus production of "Romanoff and Juliet," and wrote a piano sonata for her honors thesis.

Ann, Beth, Marilyn, Barbara, and Sharon T. were recipients of contest awards, achievement awards, prizes, and scholarships. Sharon T. won the Metropolitan Opera auditions twice in District.



SHARON ZLATNIK  
M Z  
Whitman Coll.  
Pacific Northwest Province



SHARON TEBBENCAMP  
E  
U. Kansas  
So. Central Province



LOIS HOCHSTETLER  
M Φ  
Baldwin-Wallace Coll.  
Great Lakes Province



MARILYN MANGOLD  
M N  
U. So. California  
Pacific Southwest Province



BARBARA ALLEN  
A Γ  
Mississippi So. Coll.  
East Central Province



ANN LORD  
E O  
Indiana U.  
East Central Province

## AWARDS



### ASPEN SCHOLARSHIP \$360

Winner: Janet Rayburn, Φ Γ, cello



### INTERLOCHEN AWARDS \$250 each

Jane Logan, violin  
Rochester, Minn.

Catherine Meints, cello  
Hinsdale, Ill.

Nina Tobias, cello  
Glencoe, Ill.

Susan Petard, violin  
Knoxville, Tenn.

Robin Chadwick, piano  
Mercer Is., Wash.

### ELIZABETH MATHIAS AWARD

Winners: (shown below, l. to r.)

Karen Nelson accepting for PHI OMI-  
CRON  
Cleveland Institute of Music  
(conservatory-type school)

Norma Lewis accepting for EPSILON  
XI  
University of Illinois  
(large university)

Elizabeth Ann Bricker accepting for  
PHI THETA  
Lindenwood College  
(small college)

### MARIE MORISSEY KEITH AWARD

Winner: EPSILON GAMMA  
(Belhaven College)  
(shown below, l. to r.)  
Marsha Rowland, E Γ

Helen Jackson Eisele, Φ E, Honorable  
mention



## COLLEGIATE CHAPTER SERVICE AWARDS

Co-winners: front row, l. to r.

Kathleen Healy, EPSILON DELTA,  
Lewis and Clark College, Pacific  
Northwest

Carolyn Jo Funk, MU NU, University  
of Southern California, Pacific South-  
west



Honorable Mention: back row

Miriam Davis, MU PHI, Baldwin-  
Wallace College, Great Lakes

Anne Smith, ALPHA XI, Women's  
College of U. of North Carolina,  
Atlantic

Kay Ferguson Forkner, PHI IOTA, Con-  
cordia College, North Central

Pat Cantrell, ALPHA MU, Southwest  
Missouri St. College, East Central

Not present: ALPHA NU, West Texas  
St. College, South Central

## ALUMNÆ CHAPTER SERVICE AWARDS

Co-winners: standing l. to r.

Marjorie Bernat, DETROIT, Michigan,  
Great Lakes

Edla Hilt, WICHITA, Kansas, South  
Central

Honorable Mention: seated

Ruth Berge, FARGO, North Dakota,  
North Central

Joyce Gibson, NEW YORK CITY,  
Atlantic

Not present: ST. LOUIS COUNTY, Mo.,  
East Central

EUGENE, Oregon, Pacific Northwest

PALO ALTO and SAN JOSE, California,  
Pacific Southwest



SCRAP-BOOK recognition was won by:

EPSILON PI, Texas Tech. College  
BALTIMORE ALUMNÆ, Baltimore, Md.

YEARBOOKS recognition was won by:

SAN JOSE ALUMNÆ, San Jose, Calif.  
ST. LOUIS AREA, St. Louis, Mo.

CHAPTER REPORTS recognition won by:

FARGO, Fargo, N.D.  
CLEVELAND HTS., Cleveland, Ohio  
XI, University of Kansas



# GADS HILL TRAVELS TO *Convention*

Front row, left to right: Kenneth Gardner, Diana Lopez, Barbara Wenderski, Betsy Krch, Cathy Gardner, Karen Runge, Marilyn Kowalski, Therese Kurpieski. Second row: Jacob Krch, Francine Kotz, Trudy Gorecki, Rita Bomba, June Kalina, Judy Stelmachowski, Jim Gorecki. Third row: Mary Palonis, Gregory Malo, Margaret Kurpieski, Patricia Snoble, Celeste Garstka, Charlene Guzake, Janet Augustyne, Susan Zaura.



Directors  
ALMA GRAMBAUER  
WINNIFRID ERICKSON



## WE THANK YOU, MU PHI EPSILON

"Practising for the concert seemed like a big job, but as I played on the stage that afternoon, I realized that all the practising was important and that I was proud to be a representative of Gads Hill Music School. I send my thanks to Mu Phi Epsilon. . . . I will always mark the trip to the University of Indiana one of the most interesting highlights of my life" . . . such were some of the letters sent the School after the visit and performance at Convention. 6-year old Cathy thanks us and amenities over, adds: "The luncheon was delicious and I especially liked the swimming pool." Her 9-year old brother had more to say: ". . . and to play before a big audience. It gave me a feeling of self-confidence. And it gave me a greater desire to continue my study of Music. Thanks for inviting me. The motel accommodations were fabulous."

For the youngsters it was a trip of the sublime to the practical. Mary V. Schiavone, Mu Phi, piano and theory

teacher at the School, writes that on the bus trip to Bloomington all the cows on both sides of the road were enthusiastically counted. Kinship of Moo and Mu, no doubt. Excitement over playing on a "real stage" and the delight of such an added bonus as a motel swimming pool were overwhelming. Truly the group meant every word of their closing "We thank you, Mu Phi Epsilon," set to the tune of "Around the World in Eighty Days."

On the return trip all were determined to extend their instrumental study into new fields such as violin, cello, flute, clarinet, saxophone, brass, and percussion, in that order. That the School lacked an adequate supply of instruments to meet their ambitions bothered them not at all. They are confident that where there is a Mu Phi, there is a way. Truly this Mu Phi Epsilon Music School at Gads Hill is a credit to our Chicago chapters and our sisterhood. Now do you want to take out that extra magazine subscription?

. . .

## Dean Swarthout

To the many men and women whose lives he touched with music, the memory of Donald Malcolm Swarthout will forever be a rich one. His life was filled with music. He was one of the foremost music educators in the country and served as president of both the National Association of School Music and the Music Teachers National Association. At the University of Kansas he was Dean of the School of Fine Arts from 1932 until 1950. His famed a cappella choir memorable Christmas programs will long be remembered by both performer and audience. . . . Dean Swarthout was a good friend of Mu Phi Epsilon. His Mu Phi daughter, Evelyn, Mrs. Patrick Hayes, is a concert pianist, and his niece, Mrs. Frank Chapman, is better known as mezzo Gladys Swarthout. He is survived by his wife and two daughters.

## FACULTY



INTER-CHAPTER GROUP—1961

CHORAL GROUP—1962



NATIONAL COUNCIL OF M Φ E 1962-64

Left to right: Opal Skolnick, Janet Wilkie, Beth Shafe, Virginia Fiser, Janese Ridell, Edna Mae Sila, Lois Gordon, Bettylou Scandling. Not present: Virginia Hoogenakker, Pearl Peterson.

## New Council 1962-64

Convention delegates approved the addition of two Vice-Presidents to National Council. The offices of President and Editor were relieved of their Province Governor responsibilities, and the duties of the former 1st and 2nd Vice-Presidents were divided and assigned to new Vice-Presidents. The numbering according to duties was also changed.

JANESE RIDELL remains on Council, formerly 5th Vice-President, is now President.

BETTYLOU SCANDLING remains on Council as 1st Vice-President, Extension officer and Atlantic Province Governor.

JANET WILKIE remains on Council, formerly 2nd Vice-President, now 6th Vice-President, Contests officer and Pacific Northwest Adviser.

VIRGINIA FISER remains as Executive Secretary-Treasurer.

New Council members are:

LOIS AYERS GORDON, 2nd Vice-President, Collegiate Adviser and South Central Province Governor. . . . Lois was a Φ II initiate, and is a member of Wichita Alumnæ. She has been a cellist with Wichita Symphony Orchestra since its inception, resigning this summer to devote full time to Mu

Phi Epsilon. She was instructor of cello at University of Wichita for ten years. She is a choir director, past-president of Saturday Afternoon Musical Club, vice-president and president of Wichita Alumnæ M Φ E, and District Director #12. . . . Her husband sings tenor in her choir, she has a son in Denver, a daughter married to a music teacher in Kansas, and a daughter who was at Convention as a delegate of Ξ chapter.



VIRGINIA HOOGENAKKER

EDNA MAE KRIZ SILA, 3rd Vice-President, Alumnæ Adviser and North Central Province Governor. . . . Edna Mae was M Ψ initiate, and is member of Cedar Rapids Alumnæ. She was a piano and organ major at Coe College and is now a private piano teacher. She was a charter member of both her collegiate and alumnæ chapters, being first president of the latter. She has held offices in the Iowa Federation of Music Clubs and was on the Executive Board of Iowa Music Teachers Assn. She has been active in various other music clubs, her social sorority, Delta Zeta, and the Order of the East-ern Star.

BETH KALMBACH SHAFE, 4th Vice-President, Music Adviser, and Great Lakes Province Governor. Beth was a Φ K initiate and now a member of Detroit Alumnæ. She was a scholarship winner for two years' study on harp and cello. She has been active in Detroit area for over twenty years in instrumental trio work. She is also a member of the Double Quartet in church. She has been instrumental teacher in Detroit public schools. She was president of both collegiate and alumnæ chapters, was Music Chairman of 1958 Convention in Detroit, and wrote the Prospectus for M Φ E in 1950-51. She now directs the Primary Choir at church and teaches vocal music in elementary school.

VIRGINIA HOOGENAKKER, 5th Vice-President, Academic Adviser, and East Central Province Governor. Virginia is Associate Professor of Music at Belhaven College, an initiate of E T and now their adviser, and a member of Jackson Alumnæ. She is very active on college committees outside of the music department. She is director of three choirs at Trinity Lutheran Church and active in the church program.

Principal of the second violin section of the Jackson Symphony, she is also a member of the Jackson Opera Guild orchestra. Space is too limited to enumerate the many civic, college, and music organizations which enjoy her active membership. Her B.M. cum laude, is from Belhaven, and her M.M. is from Chicago Musical College. She has taken graduate work in a number of other colleges and special music schools.

OPAL HORNBACK SKOLNICK, 7th Vice-President, Public Relations officer, and Pacific Southwest Province Governor. Opal is a M N initiate and a member of San Diego Alumnæ. She attended the University of Southern California and Pepperdine College, where she received her degree. She held a Ford Foundation Grant in the Teacher Training Project during her graduate year at USC. She was president of Beverly Hills Alumnæ where she was a member for ten years. She has attended Convention five times, once as a delegate. She has had wide experience in college and civic public relations work.

PEARL ALLISON PETERSON, Editor. Pearl was an initiate of Φ N and has been a member of Portland Alumnæ for over twenty years. She has held various chapter offices including the presidency. She founded and edited the chapter newsletter for seven years and was first chairman of *Metronome*. She received her Bachelor's degree from UCLA and her Master's degree from U. of Oregon. Her teaching has been in secondary schools in Music, English, and Social Studies. She is active on civic and church committees, is part-time organist at St. Matthews Episcopal, and president of local chapter of American Field Service. Her two sons and daughter are in college at the present time.



## Delegates



*atlantic  
province*

*Front Row, l. to r.:* Alice Gray Harrison, Atlanta; Anne-Marie Di Giacomo, Φ T; Elisabeth Infante, E Ψ; Florence Aquilina, M T; Helen Thomas, Baltimore; Eleanor Le Beau, Miami; and Donna Hearn, Φ T. *Row Two:* Velma Graham, Philadelphia; Bettylou Scandling, Province Governor; Irene K. Volz, A Θ; Ruth Tobin, A H; Barbara Gross, Ψ; Gail S. Carson, B; Becky Johnston, Φ Ω; Nancy Fox, E N; Sylvia Smith, M; and Antoinette Tucci, E T. *Row Three:* Marian McNabb, Washington; Esther Osborne, Φ Ψ; Ann Smith, A Ξ; Janet B. Semnowski, A B; Joyce Gibson, New York City; Helen Hubbard, Connecticut Valley; Mary Jane Harvey, Pittsburgh; Adele Holevas, Boston; Nancy Vance, A Z; and Suzanne Clayton, Rochester.

*north  
central  
province*



*Front Row, l. to r.:* Patricia Lynch, M E; Kristi Metcalf, Ω; Carol Ann Bigelow, M A; Gail Galloway, M T; Muriel Smith, Φ Z. *Row Two:* Edna Mae Sila, Cedar Rapids; Vida Cowin, Minneapolis; Ruth Havlik, Province Governor; Florence Kyle, Sioux City; Elaine Benson, M Ψ. *Row Three:* Ruth Berge, Fargo; Ruth Heinen, Richfield; Kay Ferguson Forkner, Φ I; Ruth Howe, Des Moines; Joan Marshall Reist, Lincoln; and Raeanna Taake, M T.

## Delegates



*great  
lakes  
province*

*Front Row, l. to r.:* Elizabeth Ayres Kidd, Marjorie Bernat, Detroit; Joann Miottel, Φ K; Karen Nelson, Φ O; Rosalie Barry, Central Chicago; Arlene Neugart, Evanston-North Shore. *Row Two:* Diana Baskovitz, M Ξ; Ruth Hicker-son, Toledo; Norma Lewis, E Ξ; Linda Stickney, E Δ; Cynthia Shoemaker, Φ; Helen McNamara, Milwaukee; Marion Snell, T; Helen Purcell Maxwell, Province Governor; and Ann Mason, Urbana-Champaign. *Row Three:* Pauline Crocker, Ann Arbor; Adah Hill, Cleveland; Irene Antoniou, Chicago; Mary Eileen Fogarty, Cleveland Heights; Pamela D. Brown, A O; Leora N. Dretke, Alliance; Ann Buc, Φ Σ; Miriam Davis, M Φ; and Jane Zbindin, E.

*pacific  
northwest  
province*



*Front Row, l. to r.:* Mildred Harris, Seattle; Sue Berger, T; Coralie Balch, E Σ; Lou Elsa Voegtly, N; Mary Lynne Cramer, E I. *Row Two:* Kathleen Healy, E Δ; Barbara Hindman, E Θ; Nancy Stewart, Φ A; Persis Shook, Tacoma; Arlene Cooley, A Δ; Janet Wilkie, Province Governor. *Row Three:* Mary Lou Van Rysselberghe, Eugene; Kathleen Thomas, Portland; Patsy McClain, E P; Peggy MacGown, M Z; Norma Gettman, M B; Alice Rose Jones, Salem; and Marie Rodkey, Spokane.

## Delegates



*pacific  
southwest  
province*

*Front Row, l. to r.:* Sarah Schilling, Stockton; Frances Hein, Fresno; Patricia Moore, E Ω; Rosalie Speciale, Province Governor; Agnes Helgesson, Palo Alto; Nancy Daggett, Φ M; Beverly Peterson, Φ X. *Row Two:* Helen Butt, Pasadena; Sylvia Bush, San Jose; Sima Mannick, Los Angeles; Bess C. Redman, Albuquerque; Bernice Huestis Hisken, San Diego; LaVerne Cardoza, A E; Mary Martin, M H; June Weybright Reeder. *Row Three:* Harriet Payne, Long Beach; Mary Bremner, Sacramento; Lois Flenner, Berkeley; Lois Banke, San Fernando Valley; Lorna Volkert, A Δ; Carolyn Jo Funk, M N; Leola Blair, Beverly Hills; Anne Marbury, E H; Cynthia Grayson, Φ N.

*east  
central  
province*



*Row One, l. to r.:* Evelyn Sillars, St. Louis County; Neva Barnard, Evansville; Marguerite Harper, Kansas City; Olga E. Prigge, Cincinnati; Pat Cantrell, A M; Beth Bricker, Φ Θ; Irene McSwegin, M II; Marsha Rowland, E Γ; Linda Dawn Burnett, E Γ (music). *Row Two:* Neva Owens, A A; Janese K. Ridell, Province Governor; Molly Paulk, E Z (music); Linda Street, Φ Θ (music); Rachael Calhoun, E K; Priscilla Niermann, E K (music); Lillie Britton, K; Madeline McDonald, E O (music); Carolyn Brockhuis, A A (music); Jean Kelley, E O; Dorothy M. Schlotzhauer, Columbia; Marjorie McKinnon, E Z; Wilma Meckstroth, Dayton. *Row Three:* Charlotte Moore, District Director; Georgia Fillingham, A Γ; Sharon Pettit, A K; Rebecca Thompson, A K (music); Georgia Grise, K (music); Melva Crain, Indianapolis; Marylyn Sexton, Z; Gail Rumford, Z (music); Ched Hieronymus, St. Louis; Dorothy Brasfield, Jackson; Dolores Mae Waters, Kansas City Evening; Dale K. Beeson, Columbus; and Suzanne Niemann, E T.

## Delegates



*south  
central  
province*

*Front row, l. to r.:* Loretta Harner, E Φ; Barbara Dalling, Salt Lake City; Grace Peyton, Denver; Rosemary Stehlik, A I; Kay Curry, Φ T; Linda Sue Henesey, Φ II; Charlotte Davis, M M; Roberta Gober, A Σ. *Row Two:* Vera Linder, Fort Worth; Phyllis Marie Owen, Φ Ξ; Virginia Porter Fiser, National Executive Secretary-Treasurer; Janis Richardson, E II; Elizabeth Marie Collins, A II; Lois Ayres Gordon, District Director; Nancy Walker, M P; Marla Lehman, A P; Millicent Akin, Oklahoma City; Elva Schietinger, M Θ; Mary Ann Bulla, M K; Mary Frances Gresham, Province Governor. *Row Three:* Helen Jackson Eisele, Φ E; Edith Pfautsch, Dallas; Dorothy McNeil, Wichita (National Magazine Chairman); Frances Carr, Austin; Edla Hilt, Wichita; Mary Johnson, Tulsa; Linda Adams, A N; Patricia Ellis, M X; Beatrice Gordon, Ξ; Judy Beckstead, E M; Martha Watson, E E.



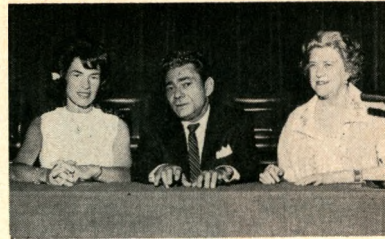
*national  
council  
1962*

*L. to R.:* Ruth Havlik, Helen Purcell Maxwell, Mary Frances Gresham, Janet Adams Wilkie, Virginia Porter Fiser, Janese K. Ridell, Bettylou Scandling, Rosalie V. Speciale, and National Convention Chairman, Madge Cathcart Gerke. This picture was taken shortly after presentation of stereo records was made to Council by Indianapolis Alumnae.

# "Echoes"

Dr. I. Lynd Esch, President of Indiana Central College, Indianapolis, speaker at final banquet: "No other medium of expression is so universal as music in point of time and space. . . . Where there is music there is harmony, and harmony is what we need more than anything else. . . . We need to understand rather than to be understood. With understanding there comes appreciation, and with appreciation there comes tolerance. . . . The challenge to the world's musicians is to utilize it for the development of harmony all over the world in all relationships. . . . Because music knows no language barrier, it moves people closer in understanding than any other medium of communication. Good music properly used can cross any man-made barrier of the world for the creation of harmony. . . . Lift up your heart, America, and Sing!"

"Future of Women in Music," a panel discussion, moderated by Izler



PODIS, SOLOMON, MONTGOMERY



KIDD, WILSON, BRETTSCHEIDER, SPECIALE, CLUTCHER

BEULAH COLE, Alpha 1904, greeted by ROSALIE SPECIALE at Reception for Council.



40-50  
year  
members

From left to right, row 1: Jessamine Barkley Fitch, Martha Washburn Wells, Nell McMurtrey, Dorothy Hiatt, Pearl M. Dedeth, Beulah Garrett Cole, Alma M. Geiser, Bertha Krehbiel, Ruth Row Clutcher, Gertrude H. Wagenseller, Kathryn S. Maish and Jeannette C. Sayre. . . . Row 2: Edith Parker, Charlotte Lieber, Ila M. Sink, Helen Butt, Mabel Comfort, Sarah Oakes Stout, Emma Coleman Strubbe, Clara W. Youmans, Velma Talmadge Graham, Lucile Miller Ferris and Lucille E. Brettschneider. . . . Row 3: Pauline Baker, Brett Schneider, Frances Wichard, Asel Spellman Stitt, Georgia Eva Lockenour, Alta H. Bartchy, Mary Stephan, Katharine Shirley, Revena Trezise Wright, Helen Keller McNamara, and Mary E. Bennett.

Solomon, director of Indianapolis Symphony Orchestra, and with Eunice Podis, concert pianist, flanking him on his right and Dr. Merle Montgomery, music consultant and editor, flanking him on his left, made lively hearing for the delegates and visitors.

Rosalie V. Speciale, presiding officer, addressing the Convention: "*Enthusiasm* is worth more than almost any other factor in building a successful organization. . . . Chapters who have members who are interested, active, enthusiastically involved in chapter affairs are fortunate indeed, for with these characteristics there is no limit to the achievement possible. . . . *Enthusiasm* puts you in motion, in touch, in contact with others. It opens the door to new ideas. . . . *Enthusiasm* builds confidence . . . to do more, to achieve heights of satisfaction beyond our highest hope. . . . *Enthusiasm* instinctively reaches toward the highest goals and standards, discarding the mediocre and calling on every resource to reach a high point of achievement." *Enthusiasm*, optimism, involvement with chapter affairs "can spell the difference between a fair chapter and a great one. . . . *Enthusiasm* is a personal, an individual contribution. It must be given freely, as a spontaneous action on the part of each one; it cannot be forced or demanded. . . . It can change your whole life. . . . It opens the doors to new ideas, . . . can bring you the lasting satisfaction derived from doing and giving. Through it you will discover the eternal truth that happiness comes only from giving and striving in a worthwhile cause. There is a way to achieve that satisfaction—do get involved in Mu Phi Epsilon activities, do be enthusiastic!"

Several Pupils of our founder, Dr. W. S. Sterling, attended Convention: Alma Geiser, his assistant on the faculty of Metropolitan College of Music, Beu-

lah G. Cole, an early pupil, Kathryn Sterling Maisch, a niece of Dr. Sterling, Jeanette Sayre and Mary Stephan, also pupils of his.

## Did You Know

that over \$6,500 was given in scholarships by chapters throughout the country?

that 107 of the 156 chapters have purchased items from Friendship Corner?

Charlotte Riedesel,  $\Phi \Omega$ , who spent last year at Silliman U., "You can imagine what would happen if we stopped sending music to Silliman. . . . So much of their music program hinges on our support for its continuance that through our participation in this important work, we are in the role of 'Bridge Builders.'" She plans to return to the Philippines in the future and work in the field of Philippine hymnody.

Sigma Alpha Iota Alumnae chapter in Bloomington gave a reception for our Convention in the Faculty Club lounge. Another gesture of Hoosier Hospitality.

Indianapolis Patroness Club hosted a pre-Convention party which included a tour of beautiful Brown County and a chicken dinner.

Four Past-Presidents of Mu Phi Epsilon attended the Convention: Lucille Brettschneider, from Cincinnati, Ohio, Elizabeth Ayres Kidd, from Glenview, Ill., Ruth Row Clutcher, from Selinsgrove, Pa., and Eleanor Hale Wilson, from Seattle, Wash.

Registered Under "Visitors" was Alice Green from Caracas, Venezuela, formerly M  $\Psi$  and Detroit Alumnae.

Pauline Baker of St. Louis, past National third Vice President, notched her 14th Convention this year. She was a former National Council member.

## Convention Artists



GILBERT REESE  
DOROTHY MUNGER  
DR. I. LYND ESCH



ALUMNÆ  
CONCERT



COLLEGIATE  
PERFORMERS



FACULTY  
CONCERT

When Fritz Kreisler was paid tribute on his 75th birthday it was written of his great artistry, "It is better to be alive for having heard him play." Such is the privilege of musicians, to inspire emotion, to challenge, to lift to the heights, to wring from the listener ecstasy or sorrow. Such was the music of the three Convention concerts that again, "it was better to be alive

## for having heard them play"

### ALUMNÆ CONCERT

- Strike It Up, Tabor ..... Weelkes  
God's Time Is the Best (from Cantata No. 106) ..... J. S. Bach  
MYLA LUESSOW, accompanist  
Balulalow ..... Benjamin Britten  
MARTHA PEARSON, soprano soloist  
This Little Babe (Both from "A Ceremony of Carols") ..... Benjamin Britten  
RUTH THRASHER, harp accompaniment  
Now Sleeps the Crimson Petal ..... Gustav Holst  
(Words from "The Princess" by Tennyson)  
JUNE GWYN, soprano soloist  
Pueri Hebraeorum ..... Randall Thompson  
Choral Ensemble, Indianapolis  
ELSIE MARSHALL, director  
Sonata for Two Pianos ..... Shirley Munger  
JANICE ZIMMERMAN, St. Louis  
ELAINE EDWARDS, Bloomington  
Sonata No. 3 in E flat Major, Opus 12, No. 3 ..... Beethoven  
SHIRLEY NORBERG, Chicago, violin  
FLORENCE HENLINE, Central Chicago, piano  
Willow Song (from Ballad of Baby Doe) ..... Douglas Moore  
Elfenlied ..... Wolf  
Der Hölle Rache kocht in meinen Herzen (from "Die Zauberflöte") ..... Mozart  
JEANNE KOSTELIC, Denver, Lyric Colorature  
MARIE KELLER, Indianapolis, accompanist  
Elegie ..... Fauré  
Vite ..... \*Nadia Boulanger  
Georgian Song ..... Tcherepnin  
Tartar Dance ..... Tcherepnin  
INDIA ZERBE, New York City, cello  
MARIAN DAS, Indianapolis, accompanist  
\* Nadia Boulanger is an Honorary Member of Mu Phi Epsilon  
Sonata No. 2 ..... Hindemith  
Prelude No. 4 ..... Elizabeth Gould  
ELIZABETH GOULD, Toledo, piano

## Banquet Program

### Fitting Finale

Ending as always on a satisfying and inspirational note the 1962 Convention climaxed its festivities with a distinguished program by Gilbert Reese, cellist, and Dorothy Munger, pianist.

Mr. Reese is principal cellist of the Indianapolis Symphony Orchestra. He has been active in European as well as American music circles as a soloist and also as a member of Chamber Music groups.

Dorothy, a K initiate, hardly needs

an introduction to her M Φ sisters, as she is well known in the midwest and east on the concert stage both as a soloist and an ensembler. She is also pianist for the Indianapolis Symphony and a board member of Indiana Federation of Music Clubs.

To create the right atmosphere for the Banquet's Grecian theme, Elizabeth Ayers Kidd played on one of the ancient instruments in her famous collection.

#### BANQUET

"In a Grecian Court of the Muses"

Friday, June 20, 1962 Frangipani Room  
 Hostess: INDIANAPOLIS ALUMNÆ  
 Toastmistress: MAXIE CLEERE SCHNICKE  
 A Grace for Mu Phi Epsilon ..... Marjorie Dean Gaston, Indianapolis  
 Indianapolis Alumnæ Choral Ensemble  
 Welcome ..... MELVA SHULL CRAIN  
 President, Indianapolis Alumnæ Chapter  
 "Music of the Spheres" ..... DR. I. LYND ESCH  
 President, Indiana Central College, Indianapolis

#### CONCERT

GILBERT REESE, cello  
 DOROTHY MUNGER, piano

Sonata in A Minor ..... Schubert  
 Allegro moderato  
 Adagio  
 Allegretto  
 Sonata for Violoncello and Piano ..... Chopin  
 Allegro moderato  
 Scherzo  
 Largo  
 Allegro

#### INTERMISSION

Sonata for Violoncello and Piano ..... Debussy  
 Prologue  
 Serenade et Finale  
 Murciana ..... de Falla  
 Asturiana ..... de Falla  
 Polo ..... de Falla  
 Danse Rituelle de Feu ..... de Falla  
 Steinway Piano

## Faculty Concert

### Ultimate In Dazzling Artistry

D. RALPH APPELMAN, associate professor of voice, B.M.E., M.M., Northwestern University, Ph.D., Indiana University, has been heard with Dallas, Jackson (Miss.), and Indianapolis Symphonies, and has been associated with faculties of several institutions before joining the Indiana U. staff.

ELEANOR G. MILLER, assistant professor of piano, received her A.B. at Cornell College and is a graduate of Juilliard School of Music. She has concertized throughout the East and Middle West, and received a Fulbright Grant in 1953. She is member of Bloomington Alumnæ.

ELIZABETH WRANCHER, is a graduate of Indiana U. and was in Europe on a Fulbright Grant. In Germany she concertized and was choral director of an Episcopal church in Munich. She will return to Germany this year when she will be the leading soprano at Augsburg's Stadtschke Buhnan.

BEAUX ARTS TRIO: DANIEL GUILLET, BERNARD GREENHOUSE, and MENAHEM PRESSLER all have long, enviable credits in solo and ensemble and orchestral experience.

I wakened and I listened—I heard—  
 Voices joining together in the early dawn  
 Man made instruments blending in harmony  
 Inspired compositions of the composer's art  
 Songs of the wayfarer and the folkway  
 Thrilling strains of the Bridal Chorus  
 The measured sounds of the Funeral Dirge  
 The majestic chords of the ceremonial rites  
 The martial strains of our country's songs  
 The happy rhythms as we join in the dance  
 A Mother's lullaby singing a child to sleep  
 Children's voices raised in song  
 The gift from God of the artist's inspiration  
 The organized sound of the concord of sweet sounds  
 A living, changing language universally understood  
 The expression of our life's experience in sound  
 The touch of these on the disturbed and restless soul

These—These Myriad Sounds—I Believe are—  
 the Spheres of Music

—MADGE CATHCART GERKE

#### GROUP I

Nachtlied ..... Mendelssohn  
 Stornello ..... Cimara  
 Pilgrim's Song ..... Tchaikovsky  
 Old Mother Hubbard ..... Hutchinson  
 D. RALPH APPELMAN, bass  
 CHARLES WEBB, piano

#### GROUP II

Impromptu Opus 25, No. 1 ..... Fauré  
 Nocturne Opus 63, No. 6 ..... Fauré  
 Impromptu Opus 31, No. 2 ..... Fauré  
 ELEANOR G. MILLER, piano

#### GROUP III

Three Songs ..... Eugene Goossens  
 Melancholy  
 The Appeal  
 Philomel  
 In questa reggia (Turandot) .. Puccini  
 Ich bin verliebt (Clivia) ..... Dostal  
 ELIZABETH WRANCHER, soprano  
 WILLIAM HARPE, piano

#### GROUP IV

Trio in D Minor ..... Mendelssohn  
 BEAUX ARTS TRIO

# "... If it were not for Song"

FRANCES WILLIAMS came to the New York chapter from Seattle, to study at the Juilliard Graduate School (Scholarship), studying piano with James Friskin and Composition with Rubin Goldmark. Previously she had attended the Cornish School of Music in Seattle, and had studied with Anna Grant Dall and Calvin Brainerd Cady. At that time she was also an accompanist for singers, many of whom were trying out for Juilliard. New York had always been her goal, and when the adjudicator for Juilliard tryout heard her play for some of the competitors, he asked her why she didn't try for a scholarship. She did, and won, later graduating from Juilliard to become a professional musician.



As a composer Frances has more than 200 published works to her credit, mostly choral, secular and sacred, including "Give Thanks," "Holy Lord of All," "In Bethlehem's Lowly Manger," "Christ, the Risen Lord" (Easter cantata), "To the Dawn," etc. One of her best known works is "Let There Be Music" which is sung throughout the United States in colleges, schools, concerts, and churches, and by the Associated Male Glee Clubs of America in Milwaukee, Detroit, Toronto (Massey Hall), and in 1961 at the International Concert, Memorial Hall, Kitchener, Ontario. Also by Texaco Chorus, IBM Choruses, Dow Chemical Chorus, and for the White House Conference for Youth. Many recordings have been made of this number by col-

lege and male groups, and it has been heard over national TV and networks.

She is a member of ASCAP, and director of two choirs; also guest clinician at clinics for music educators and choir directors. Starting out as a manuscript reader for Harold Flammer, Inc., Music Publishers, Frances is now music Editor-in-Chief for the firm.

Frances is the Editor of our new National Song Book, which made its first appearance at National Convention. We are here presenting one of the songs from that book.

Council approved the purchase of a gift of choral music by Frances to be sent to Silliman University as a token of our appreciation for her work in editing this new Mu Phi Epsilon Songbook.

## A Mu Phi Epsilon Chorale

(SSA)

Words and Music by  
June Weybright Reeder  
Theta, San Francisco

Largo (M.M. ♩ = 80)

*mf*

Sop. I  
\*1. Mu - sic, first of all the arts, we come to thee in—  
2. Mu - sic, great - est of the arts, we bring to thee our—

Sop. II  
1. Mu - sic, first of all the arts, we come to thee in  
2. Mu - sic, great - est of the arts, we bring to thee our

Alto  
1. Mu - sic, first of all the arts, we come to thee in  
2. Mu - sic, great - est of the arts, we bring to thee our

Largo (M.M. ♩ = 80)

*mf*

*p* *mf*

song, Hear Mu Phi Ep - si - lon! Hear our ear - nest  
song, Hear Mu Phi Ep - si - lon! Hear our wish to

*p* *mf*

song, Hear Mu Phi Ep - si - lon! Hear our ear - nest  
song, Hear Mu Phi Ep - si - lon! Hear our wish to

*p* *mf*

song, Hear Mu Phi Ep - si - lon! Hear our ear - nest  
song, Hear Mu Phi Ep - si - lon! Hear our wish to

\*Either or both verses of this Chorale may be used as the occasion demands.

*cresc.*

sup - pli - ca - tion, our re - quest of thee. Our re - quest would  
share thy beau - ty, share with all man - kind, Help him beau - ty

*cresc.*

sup - pli - ca - tion, our re - quest of thee. Our re - quest would  
share thy beau - ty, share with all man - kind, Help him beau - ty

*cresc.*

sup - pli - ca - tion, our re - quest of thee. Our re - quest would  
share thy beau - ty, share with all man - kind, Help him beau - ty

*cresc.*

*p*

*mf* *cresc.*

be: Lead us to full un - der - stand - ing of thy power so -  
find; Show him love and tol - er - a - tion, make our lives a -

*mf* *cresc.*

be: Lead us to full un - der - stand - ing of thy power so -  
find; Show him love and tol - er - a - tion, make our lives a -

*mf* *cresc.*

be: Lead us to full un - der - stand - ing of thy power so -  
find; Show him love and tol - er - a - tion, make our lives a

*mf* *cresc.*

*ritard* *ff* *mf a tempo*

all com - mand - ing. Mu - sic, first of all the arts, we  
ded - i - ca - tion. Mu - sic, great - est of the arts, we

*ritard* *ff* *mf a tempo*

all com - mand - ing. Mu - sic, first of all the arts, we  
ded - i - ca - tion. Mu - sic, great - est of the arts, we

*ritard* *ff* *mf a tempo*

all com - mand - ing. Mu - sic, first of all the arts, we  
ded - i - ca - tion. Mu - sic, great - est of the arts, we

*ritard* *ff* *mf a tempo*

*p rit.*

come to thee in song, Mu Phi Ep - si - lon.  
bring to thee our song, Mu Phi Ep - si - lon.

*p rit.*

come to thee in song, Mu Phi Ep - si - lon.  
bring to thee our song, Mu Phi Ep - si - lon.

*p rit.*

come to thee in song, Mu Phi Ep - si - lon.  
bring to thee our song, Mu Phi Ep - si - lon.

*p rit.*



JUNE WEYBRIGHT REEDER was initiated by Theta chapter, and has been member of various Alumnae chapters, the present one being San Francisco. She is well-known as a composer, lecturer, and music educator. At Convention she was Resolutions Chairman, and was accompanist for her "Chorale" when it was sung during the Song-Fest.

## Sing Along With Mu Phi . . .

The Convention Song Fest was conducted by Dean Wilford C. Bain, head of the Music Department of Indiana University. The delegates sang selections from Wagner's "Flying Dutchman" with three members of the University's summer production cast present to sing the solo passages. The new Mu Phi Epsilon Song Book was introduced by Janet Wilkie, and a number of songs from it were sung. Several were accompanied by their composers; among them were June Weybright Reeder, San Francisco, Carolyn Brockhuis, A A, Marjorie Dean Gaston, Indianapolis, and Bettylou Scandling, New York City. . . . It was the privilege of one of the 40-year members, Emma Coleman Strubbe, Alpha initiate and Cincinnati, to accept the new book for her daughter-in-law, Virginia Wheeler Strubbe, M O, a voice major, active in radio and TV, who was composer of one of the songs in the book.

## Europe Bound



EDITH KILBUCK

EDITH KILBUCK, Portland alumna, has received the first annual Lillian and Paul Petri Award for European Study, and left in August for Vienna to spend a year in private study in piano and accompanying. In the fall she and Nona Pyron will join forces to appear on European TV and radio. They will make a concert tour through Europe, performing in Stuttgart, Oslo, Rome, Florence, Venice, Turin and Trieste in a series of cello-piano sonata programs.

Edith, a 1952 graduate of Lewis and Clark College where she was a member of Epsilon Delta, received her Master of Science degree at Juilliard, and subsequently taught piano, coached and accompanied in New York City. Later she taught at the University of Miami in Florida, and recently has been instructor in piano at Lewis and Clark and the University of Portland.

(Continued on page 36)

NONA PYRON, who will concertize with Edith Kilbuck in a series of cello-piano sonata recitals this fall in Europe, is an Associate Professor of Music on the faculty of Willamette University in Salem, Oregon. A native of California, she received her B.A. Music and Masters degrees at U.C.L.A. She also attended Eastman where she was initiated into Mu Upsilon. In 1957 she studied in Munich, Germany, under the German Government Study Grant. Last April she was chosen to be one of eight cellists to work with Pablo Casals in his master class in Berkeley, California.

The past three years Nona has been a member of the Festival Orchestra of the Alaska Music Festival, and this past summer was a member of the Willamette University String Trio which was featured at the Festival.

Before joining Edith, Nona was in charge of a group of U.S. students

(Continued on page 36)

NONA PYRON





## Alla Breve . . .

NADINE SALONITES, Sacramento, was given the award as "most outstanding singer of season" by East Bay Opera League after performances in Bellini's "Norma."

MARJORIE FENNELL LENTZ, Cleveland, lectures on the lute and lute music, assisted by her recorder-playing son.

In the 120-member Cleveland Orchestra and Chorus which performed at the 6th Annual Festival Casals in Puerto Rico in June were six Mu Phis: ALICE JERABEK (and husband, Paul), CORDETTA GROSSEN VALTHOUSER, MARGARET PHILLIPS, BETTY MOREY, JOAN SESNICK, and REGINA McCONNELL. MARTHA DALTON was member of the Cleveland Orchestra which toured Russia and Europe.

The Eastman Philharmonia toured 18 European countries last spring; included in the personnel were six Eastman Mu Phis: STEPHANIE SLOBODZIAN, DAYNA LARASON, SYLVIA LUDWIG, SUSAN ROSENBLUM LEVITIN, MARGIE CLARKE, and MARY JANE LANG.

JANET DAVIS DAY sang Tuptim in Portland Civic Theater production of "King and I" causing critic Bob Walters to write, "—has a marvelous singing voice—characterization leaves nothing to be desired."



JANET DAVIS DAY

Newly appointed chairmen:

GERTRUDE OTTO, N.Y., "Metronome"  
HILDA HUMPHREYS, Detroit, "Opus"  
Both are former National officers.

Robert Riley in *Christian Science Monitor* devoted several hundred words to MARILYN NEELEY's April recital at U of California.

CAROL SMITH moved a San Diego critic to write "—alto—full, ripened, lambent quality, rich in color, faultless in pitch, control so perfect—." The production was the Los Angeles Philharmonic Orchestra's presentation of Mahler's "Song of the Earth."

CAROLYN "KAY" FOOS sang Maddelena in "Rigoletto" performance at Portland State College whose principals were young local artists.

HEDDA hadda quote in her column about movie producer Manulis' reaction to SHIRLEY VERRETT-CARTER after hearing her at Festival of Two Worlds in Spoleto, Italy, one of "—two wonderful, new American artists."

BRUNETTA MAZZOLINI sang Papagena in "Magic Flute" for six performances during Vancouver, B.C., Festival.

MARY FRANCES ALVAREZ, A A, will take a year away from Portland State College to teach English and music in the Instituto America in Chihuahua, Mexico.

When the Bayanihan Dancers appeared at Seattle World's Fair they drew raves from the critics. One called the musical directorship of LUCRECIA KASILAG "in itself a delight." The summer tour included 15 countries.

MARJORIE GORDON, general director of Detroit Opera Theater (operas in English) was also one of principals in "Masquerade," world premier of Strauss' "Die Fledermaus."

*Musical Courier* for August, 1962, in an article on Collegiate Honorariums includes the name of Mu Phi Jean Demos, retiring faculty member at New England Conservatory of Music—she was Dean of the Graduate Students—who was honored at commencement exercises.

. . .

### ANNOUNCEMENT: NATIONAL AUDITIONS for PIANISTS

*Auspices:* Friday Morning Music Club Foundation  
Incorporated, Washington, D.C.

#### DEADLINES:

Postmark March 15, 1963, tape recordings  
May 3, 1963, semi-final and final auditions in Washington

#### REQUIREMENTS:

American citizenship  
Registration fee \$5.00, no refund  
Age 16 through 22nd year.  
Restrictions on use of award money and repertoire

#### SCHOLARSHIP AWARDS: *For information and application blank write:*

1st—\$1,500	KATHRYN HILL RAWLS, Chairman of Auditions
2nd—\$750	1805 37th St., N.W.
3rd—\$500	Washington 7, D.C.
	Telephone: FE 3-2634

# BOOK SHELF

THE TEXTURE OF MUSIC: From Purcell to Brahms by Ivor Keys, London, Dennis Dobson, 1961 (112 pp., 102 mus. illus., \$2.95)

*The Texture of Music* is one of many in the Student's Music Library. Though a small book, it scans a wide arc of European music. Ivor Keys, M.A., Mus.D., F.R.C.O., is Professor of Music in the University of Nottingham, England. An editor's Foreword informs, "Professor Keys has two guiding principles: that music should be heard rather than seen; and that full understanding of the art of composition can only be learned from the methods of the great composers." In his introduction Dr. Keys states that the chosen time-span from Purcell to Brahms would appear to be, "well-nigh unmanageable," but that, "in dealing with the materials of harmony and counterpoint subdivision has been impossible." He finds no dividing lines between classical and romantic music, "there appears to be no 'romantic' harmony which Bach and Handel have not used between them."

Dr. Keys defines and illustrates the basic scale and chord materials of music, contending that, "with all harmony, it depends on what comes next." By this means he points up the "texture of music" resulting from the tonal combinations chosen by the individual composer. Each of the ten chapters is well supplied with illustrative music excerpts and each closes with relevant exercises for original composition and for playing. "Listen acutely," he urges, "to everything you do. Proceed by trial and error with your ear the only judge."

A HISTORY OF MODERN MUSIC by Paul Collaer; Translated from the French by Sally Abeles, Cleveland, Ohio, The World Publishing Co., 1961 (xv + 413 pp., 134 mus. illus., \$6.50)

*A History of Modern Music* is a translation from the second edition of a French text, published in Brussels, by Elsavier, 1955. Paul Collaer, its author, is a Belgian,

educated in music and chemistry with a doctorate in the latter. Eventually he became a professional music promoter and since 1956 has been Professor of Music History at the Chapelle Musicale de la Reine Elisabeth. He has also published other books on music. Chronology, the first compendious chapter, is a miniscule history in itself. In it are listed composers and their works for a period of 70 years; a chronology of birth-dates; and an exposition of characteristic musical trends and techniques as of certain years.

The Vienna "Triad of composers" Schoenberg, and his two pupils, Berg and Webern are given first discussion. These are followed by a chapter on Stravinsky. Dr. Collaer appraises these two musical Titans, "Schoenberg built a system. His construction took shape and proceeded to perfect itself from one work to another." "Not so with Stravinsky. The world sought in vain to understand his development. No work resembled the work preceding or following it." The four chapters following survey French music after Debussy, including Satie, The Six, and their successors. "In French music man is considered a function of his association with other beings, feeling their infinite and multiple radiations and sending his own out to them." Next comes Music in Soviet Russia, growing out of the contrast between the earlier Moscow and St. Petersburg schools of composers which generated modern art. The chapter is brief and deals principally with Shostakovich and Prokofiev with passing mention of lesser composers. German music after Richard Strauss discusses Hindemith in detail with briefer attention to Weill, Haba, and other less eminent Germans. The concluding chapter, Nationalism and Eclecticism is a long one, inclusive of many races and nationalities. Its final paragraph is: "The only conclusion we can make of their works is their lack of effective range, of communicating power and the absence of necessity—qualities which are innate in composers of the first rank." The work closes with 134 subjoined Musical Examples from numbered references in the text; a brief Appendix on Modern Music and Lyric Theater; and a composer and author Index.

MUSIC IN NEW HAMPSHIRE, 1623-1800 by Louis Pichierri, New York, Columbia University Press, 1960 (xv + 297 pp., \$6.00)

Dr. Louis Pichierri is Director of Music for the public schools of Providence, R.I. "The Sonneck Memorial Fund in the Library of Congress provided funds toward" the publication of the book. Dr. Oscar G. Sonneck contributed greatly to studies of early American music and is one of the sources used by Dr. Pichierri in his protracted and exhaustive research. New Hampshire was created by royal grant of King James I in 1622. It was overshadowed by the larger, more powerful Massachusetts Bay Colony, its neighbor. The characteristic difference between these two lay in the fact that the settlers of Massachusetts had come to the New World "in quest of religious asylum," whereas the New Hampshire colonists had sought "the acquisition of wealth through fishing, fur-trapping, and trading with the Indians." In New Hampshire there were "no legal restrictions on music, per se" such as were enforced in Massachusetts.

The colonists had brought with them musical instruments and songs from the home lands. During their term as a royal colony, English and French troops were quartered in New Hampshire and their military bands were staffed with wind instrument players far beyond the local groups or the Continental Army fife and drum corps. The colonies were often visited by foreign theatrical companies who played the leading New Hampshire towns, Portsmouth, Exeter, and Concord. Eventually European-trained performers established themselves, sold and repaired musical instruments, and offered their services as teachers. Their advertisements in the local press are amusing but denote a very serious attitude toward music.

The clergy, generally Church of England or Congregational, were "men of distinct erudition and scholarly attainment. Most of them were graduates of colleges that had been founded in New England for the 'expressed purpose of providing an educated clergy' such as Harvard, Yale and Dartmouth." These community leaders served as pastors, teachers, lawyers, even physicians. At first simple psalm-singing was used in church but eventually European religious music was introduced and instruments added to enrich the services, though not without vigorous protests from conservative members. Public events gave opportunities for concerts. The greatest of these galas was the visit of General George

Washington to Portsmouth which evoked a frenzy of social and musical activity. Local self-taught composers began to write and publish their works. Teachers presented their "young Ladies and Gentlemen" in recitals. The organization of local singing schools became the beginning of music education and improved choir singing to the extent that the famous choral societies of New England were organized. After the Revolutionary War the Latin Schools were supplanted by the academy movement, which was co-educational and taught music seriously. Although opera met with opposition from some, it flourished in New Hampshire before and after the Revolution. The book closes with three voluminous appendixes which include Teacher's Advertisements; Opera Programs; extensive Chapter Notes and Bibliography; ending with complete topical and composer Index.

THE MODERN CONDUCTOR by Elizabeth A. H. Green, Englewood Cliffs, New Jersey; Prentice-Hall, 1961 (xii + 308 pp., 114 mus. illus., \$9.00)

Elizabeth A. H. Green is Associate Professor of Music Education at the University of Michigan. She teaches conducting and is in great demand by school music festivals and orchestra clinics. As a concertmaster she has done numerous orchestral arrangements and original compositions as well as a book, *Orchestral Bowings and Routines*. Her book, *The Modern Conductor*, is intended for use as a college text. It is based on the principles of the eminent conductor, Dr. Nicolai Malko as set forth in his *The Conductor and His Baton* (Copenhagen, Wilhelm Hansen, 1950). Dr. Malko was a pupil of Rimski-Korsakov, later moving to London and finally to Chicago.

Miss Green's book is organized into three main sections: The Manual Technique; Score Study; and Mastery. Each is well illustrated with diagrams, photographs, and excerpts from scores of various types. The text concludes with seven extensive appendixes and two indexes. Section I contains eight chapters concerned with the fundamental patterns of time-beating; "expressive gestures"; development of the left hand. Every chapter has exercises for practice and specific sections from suggested bibliography. Chapter V, "Expressive Gestures" lists the Malko classification as ac-

(Continued on page 43)

## Throughout the day

When is "incidental music" not incidental? When it is specifically programmed, of course, and an integral part of a luncheon or other unit activity of the Convention schedule. Such was the music performed by host chapter music delegates and members. At the Tuesday luncheon was heard:

*Invocation*: "Father We Praise Thee," 13th Century arr. . . . . Dearmer  
EPSILON OMICRON ENSEMBLE

and later:

The Monk and His Cat . . . . . Samuel Barber  
The Children's Hour . . . . . Charles Ives  
Go Way from My Window . . . . . John Jacob Niles  
I Hear An Army . . . . . Samuel Barber

GAIL RUMFORD, Z, soprano  
JEANETTE KARRAKER, Z, accompanist

Sonatina . . . . . Jon Polifrone

GEORGIA GRISE, K, saxophone  
RUTH THRASHER, Indianapolis Alumnae, accompanist

These Delights If Thou Can Give . . . . . Handel  
(from "L'Allegro")

Sanctus (from "The Requiem") . . . . . Gabriel Fauré, arr. T. F. H. Candlyn  
Ave Maria . . . . . Zoltan Kodaly  
The 137th Psalm . . . . . Liszt

EPSILON OMICRON ENSEMBLE  
KAREN WILSON, mezzo soprano  
LINDA JUST, violin  
MADELINE McDONALD, piano  
KAREN SHAW, piano  
GEORGE F. KRUEGER, director

At the Memorial Service Bonnie Jeanne Trowbridge, violin, and Evelyn M. Sillars, piano, performed the background music for the reader, Mabel M. Henderson, and chaplain, Ann G. Nissing, of St. Louis County Alumnae chapter, and the Indianapolis Alumnae Choral Ensemble sang,

Lift Thine Eyes . . . . . Mendelssohn  
Lord's Prayer . . . . . Josephine Forsythe, T A (deceased)

The music for the Honors Dinner that evening included:

*Invocation*: "A Grace" . . . . . Gladys Rich

MARILYN COBURN, soprano  
RUTH BADER, contralto  
LUCILLE BRETTSCHEIDER, accompanist  
CINCINNATI ALUMNAE

Ballade in A Flat Major . . . . . Chopin  
CAROLYN BROCKHUIS, A A, pianist

Ave Maria . . . . . Dr. Winthrop S. Sterling

CINCINNATI ALUMNAE ENSEMBLE  
RUTH BADER, director  
LUCILLE BRETTSCHEIDER, accompanist  
DR. THOMAS A. KEITH, baritone soloist  
DOROTHY SACHS, violin obligato

At the "Plantation Daze" luncheon on Wednesday, the selections were: "Bruyères," by Debussy, and "Six Rumanian Dances," by Bartok, played by Molly Paulk, E Z, piano, and "La Soirée dans Grenade" by Debussy, played by Linda Dawn Burnett, E T, piano.

Program at the evening dinner:

Fantasies, Opus 116, Nos. 1, 6, and 7 . . . . . Brahms  
LINDA STREET, Φ Θ, piano

Sonata in A Major . . . . . Vivaldi

Nigun . . . . . Bloch

Hora Staccato . . . . . Dinicu-Heifetz

Gypsy Airs . . . . . Sarasate

LINDA JUST, E O, violin  
CHARLES WEBB, accompanist

On Thursday the featured music was:

Let Me Wander Not Unseen . . . . . Handel

By a Lonely Forest Pathway . . . . . Griffes

Bergerette . . . . . Recli

Tu che di gel sei cinta (Turandot) . . . . . Puccini

REBECCA ANN THOMPSON, A K, soprano  
SHARON PETTIT, A K, accompanist

Prelude to a Young Dancer . . . . . Dello Joio

Prelude to a Young Musician . . . . . Dello Joio

LUCILE RODEE, M II, piano

And at the evening dinner time:

La Terrasse des audiences au clair de lune . . . . . Debussy

Feux d'artifice . . . . . Debussy

KAROLYN REBECCA SCHMITT, A M, piano

The White Peacock . . . . . Griffes

VINCENTINE PIAZZA, piano

At the last luncheon, on Friday, these numbers were heard:

Capriccio Agitato, Canzonetta and Toccata . . . . . P. Ben-Haim  
(from Five Pieces for Piano)

PRISCILLA NIERMANN, E K, pianist

Three Songs from William Shakespeare . . . . . Williametta Spencer

ANNETTE JOHNSON ROWELL, Bloomington Alumnae, soprano

VERA SCAMMON, Bloomington Alumnae, soprano

LEWIS ROWELL, accompanist

COMING in January issue:  
Coverage of the Convention talk by Allen Winold, "They Shall Have Music," the Wichita Institute of Logopedics, our newest sphere of interest, with other Music Therapy material will appear in January issue. "Future of Women in Music" Convention panel will be reported in March issue.

Our deep and heartfelt thank-you to all of the chapters of the East Central Province who made the 36th National Convention a memorable one. And a special congratulation to Madge Cathcart Gerke and her marvelous Convention Committee. It was indeed Happy Hoosier Hospitality!

## Music Therapist Initiated

Alpha Lambda chapter at Portland State College announces with great pride the Special Election last spring of Hazel Lindsay, music therapist at Morningside Hospital, Portland. Mrs. Lindsay is one of three registered music therapists in the Northwest. (The other two are men.)

She was an organist for many years, her first professional training being under Harrison Wild in Chicago. She studied accompanying with Frank La Forge and piano with Ernesto Berumen in New York. For a number of years she was active as an accompanist, organist and choir director. Later she came out to San Francisco where she taught music in the secondary schools for twenty years. During the latter part of that time she got a leave of absence and went to Chicago Musical College where she took a course in what was a new field—Music Therapy.

At that time there were no positions open for music therapists in state hospitals, so she returned to teaching until the time came when a nation-wide examination was offered by the state. This she took and passed and then held positions as therapist at Patton State Hospital and Sonoma State Hos-



HAZEL LINDSAY

pital for the Retarded, both in California. After ten years the compulsory retirement age of sixty-five forced her to resign. She came to Portland and after a year of retirement, could stand it no longer, so accepted an appointment as music therapist at Morningside, where she stayed for five years, retiring this past summer on well-earned laurels. A year ago she spent several months in Europe, traveling and visiting a son in Germany.

Hazel will be one of the principal speakers at the fall District Conference in Eugene. She is now active with the Portland Alumnæ.

### KILBUCK

(Continued from page 29)

Mr. and Mrs. Petrie, for whom the Award is named, taught music for many years at Oregon State University in Corvallis, and left their entire estate for the Award, which is restricted to an Oregon musician.

JEAN CRITES COMPTON

### PYRON

(Continued from page 29)

participating in "Experiments in International Living" in Germany. In December she will go to Puerto Rico to study for a month with Casals before returning to Willamette spring term.

CLORINDA TOPPING

## MEMO from DESK

It is with pleasure and a measure of trepidation that I take over the duties of Editor of TRIANGLE. It will be a real challenge to follow the fine work of my predecessor, Ruth Havlik, but with the continued interest and support from all of you I am sure we will not let her down. This desk welcomes contributions and suggestions so don't hesitate to write both.

Loyally,

PEARL PETERSON  
National Editor TRIANGLE



Pearl Peterson (Mrs. Howard), TRIANGLE editor, is shown while visiting the George Banta Company, with Harold Bachmann, Service Director, left, and Richard Machamer, head of the Art Department, right.

## Magazine Agency Headed by Dorothy McNeil

New Magazine Agency Chairman is Dorothy McNeil (Mrs. Tom) of Wichita, Kansas. Her home town was Moberly, Mo., where she received her early musical and business training, and two years of Jr. College. She then went to the Conservatory of Music in Kansas City, Mo., where she majored in voice. She has taught voice and worked for a number of business firms, and been very active in civic activities, Wichita Alumnæ, School Board, Music Club and Church.

Her husband sings and her daughters both study piano and flute. Dorothy sings with the Wichita Mu Phi Chorus.



DOROTHY MCNEIL

# Chapter NEWSLETTERS

## ATLANTIC PROVINCE

### BETA New England Conservatory of Music

Beta chapter has had a very successful and eventful year. We initiated six pledges: Valerie Peacock, Leah Tuchinsky, Michale Dibner, Judy Olsen, Elaine Rosen, and Virginia Van Ham.

Valerie and Cathy Nadon gave voice recitals this semester, and Cathy was elected into Pi Kappa Lambda. We are all very proud of her for this distinction.

The Music Educator's National Conference in Chicago in March was represented by two Mu Phis: Cathy Nadon and Diane Cullington. They attended a Mu Phi dinner while there. We are proud to award our Freshman Achievement Award to Frances Zak, and presented the award to her at the Annual School Banquet. Diane Cullington was kind enough to invite the whole sorority to her house for a tea for the final event of the year. Our three new top officers are Charlotte Mesuse, President, Leah Tuchinsky, Vice-President, and Linda Doell, Treasurer. Our new faculty adviser is Sonia Klosek Vlavecic.

GAIL S. CARSON

### BALTIMORE

In March Jean Sharp sang with the Handel Choir of Baltimore, and Bonnie Lake performed a Vivaldi piccolo concerto with the Baltimore Symphony, of which she is a member. At our March 18 musicale we celebrated the birthdays of two of our patrons: Mr. Joseph Imbrogulio and Mr. Julio Esteban.

"James' Birthday," a one-act play by Ellen Rider Blake was presented by her French class at PTA.

On May 8 our annual scholarship recital was given with Hugh Thompson, American baritone and former Metropolitan star, presenting a program of exceptional merit. He was accompanied by one of our patrons, the

noted pianist, Julio Esteban. The recital was given in the Peabody Concert Hall and was followed by a reception in the Peabody Library, hosted by three of our patronesses, Mrs. Charles Austrian, Dr. Lubov Keefer, and Mrs. Paul M. Taylor. Later in May we joined with Phi Gamma chapter in a musical program at the home of Mr. and Mrs. Imbrogulio. This marked the 35th anniversary of Phi Gamma.

We presented a program by Baltimore composers for the College Club on Sunday, May 27. A patron, Mr. Howard Thatcher, accompanied some of his compositions at this time. Mrs. Paul Thomas was the outgoing president of this Club. Margaret Carroll went on extended trip to Europe. Helen Thomas, our Convention delegate, entertained chapter members on her return. Her enthusiasm was shared by Sylvia Dodd who attended as a visitor.

SYLVIA BETTS DODD

### ROCHESTER

Talented, young, energetic members, an enthusiastic corps of appreciative listeners, a dedicated group of planners and organizers, and interested participating patrons have made this year one of the most successful in the chapter's history.

Pianists Adele Tilson Kent, Jane Sylliasen Will, Gladys Rosseutscher, Dr. Gertrude Miller, Hazel Sampson Duncan, Helen Howe, Martha Stonequist, Mildred Randall Stalker, and patrons Lois Phelps Lines and Dorothy Scott, presented a wide variety of excellent piano music throughout the year in addition to appearing with our instrumental performers in ensemble.

Lorene Carpenter Field, Dorothy Pund Allen, violinists, and Carol Kaiser Oliver, cellist, delighted audiences with professional solo and ensemble appearances. Althea Speelman in addition to performing her flute "Soliloquy," which received a Mu Phi composition award in 1956, has by relating her performing experiences at Gads Hill, inspired us to take a new look at the magazine sales program. Marilyn Smith, musical therapist on the staff of Strong Memorial

Hospital, is scheduled for a repeat informative discussion of the work she is doing here in Rochester hospitals.

Charlene Chadwick Cullen, soprano, Mirta Borges Knox, contralto, Suzanne La Grandeur Clayton, mezzo-soprano, and Frances De Witt Babcock, soprano, in solo and ensemble have added pleasant variety to the program.

In joint programs with Mu Upsilon at Eastman School, the following presented programs: Masako Ono Toribara, who spent last year studying music and flower arranging in Japan, played and illustrated the musical history of the Koto, Japanese harp, sang Japanese songs, and showed slides of points of interest. Patron Belle S. Gitleman, pianist, composer, artist, and poet, illustrated with famous paintings and piano music "A Survey and Comparison of Music and Art from 1400 to Modern Times." Dr. Ruth Watanabe showed slides of her recent trip to the Scandinavian countries. Jocelyn Macy Sloan, Patron, read her original poetry and that of Patron Mabel Olney from the recent edition of the Gleam, publication of the Rochester Poetry Society. A Kilbourn Hall Recital, the first by Rochester Alumnae, is considered the high point of our professional programs this year. Adele Tilson Kent, pupil of Rudolf Ganz, played Schumann's "Papillons," Mirta Borges Knox sang "Seven Songs" by Da Falla, Lois Phelps Lines played Chopin's "Fantasy" and a Brahms' "Rhapsodie." The Ravel "Trio" climaxed the Sunday afternoon concert. Playing were Lorene Carpenter Field, violin, Carol Kaiser Oliver, cello, and Adele Tilson Kent, pianist. Illness prevented them from repeating at Convention.

By opening their lovely home for "Husbands invited" parties, Dorothy Pund Allen, Mr. and Mrs. Richard Myers, Jane Allen Gray, and Marguerite Baker Watts provided a congenial atmosphere for fine performance. Alma Kruse Jackson, Adjudicator for Garden Clubs, provided spectacular floral arrangements, and President Adelaide Tweedel Waring, assisted by the following, made possible the well-planned year: Harriet Balcom Reed, Virginia O'Brien Ritz, Doris La Due Dodge, Carol Frank Clement, Helen Wilson Ferris, Alleen Lindquist Fraser, Margaret Lafferty Gilbert, Barbara Shattuck Tellier, Elizabeth Twadell, Edna Baldwin Cooley, and Carol Ladrach Zajkowski.

From Pittsburgh we welcome Miriam

Mirret and Elizabeth Henderson. All of our performers enjoyed presenting a wide variety of fine music in homes for the aged during the winter months. Children of Jane Sylliasen Will (Beatrice, flute), and Lorene Carpenter Field (Richard, violin, Heidi, cello, and Dianne, piano) appeared under our sponsorship at the Episcopal Home for the Aged.

SUZANNE CLAYTON

## GREAT LAKES PROVINCE

### GAMMA U of Michigan

Gamma held its spring musicale in the home of Mrs. Robert Noehren on April 29. New patronesses were installed. Patronesses for the coming year are: Mrs. Millard H. Cates, Mrs. Albert Cohen, Mrs. Ralph Herbert, Mrs. William P. Malm, Mrs. Gyorgy Sandor, and Mrs. Allan F. Smith.

Gamma girls who were cast members of the School of Music Opera Department's production, "The Merry Wives of Windsor," were Elizabeth Bowman Olsen, Karen Klipic, Donna Newman, Sharon Dierking, and Georgia Griffith. Carol Jewell and Penelope Lint were members of the orchestra. New officers are: Marian Snell, Rosaleen Dawes, Merilee Gauthier, Beverly Karanovich, JoAnn Deabler, Georgia Griffith, Kathryn Shaffer, Sandra Wilson, Alberta Cohan, Alma Henderson, Sharon Dierking, and Julia Arment. Recitals were given in the spring by Grace Zetterstrom, organist, and Elizabeth Olsen, soprano, accompanied by Patricia Parker.

Mu Phi Seniors were honored with a fine breakfast at the home of our president, Marian Snell. A gift and a poem were given to each senior.

KATHRYN A. SHAFFER

### EPSILON U of Toledo

This has been a full and rewarding year for all of the Toledo Mu Phis. The year began with a rush party at Esther West's lovely home in south Toledo. Another Toledo alumna, Mrs. Florence Miller, was on hand for the party to tell the new girls about Mu Phi Epsilon. The party was very successful and everyone enjoyed Mrs. West's

piano playing. A short month later, every girl who attended the party pledged Mu Phi Epsilon.

Epsilon chapter is proud of her members and can boast of having every music major or minor except one in her membership. This year we hope to achieve 100% membership of the girls in music at the U. of Toledo. With the wonderful help and support that we get from our close association with our alumnae, we can accomplish anything we wish. Mrs. Miller, president of the alumnae here, had our spring initiation in her home. Both Esther West and Florence Fisher Miller have been real sisters to our whole chapter here in Toledo.

Helen Bay was our graduating senior this year. On her senior recital she played a Grade "Fantasy Piece," Pierne "Serenata," and sonatas by Wanhel and Brahms. We all attended the recital and ushered at all of the senior recitals, also the musical convocations at the University. New initiates this year were Dianne Clark, Madonna Heinze, Rachel Newcomb, Dorothy Simlax, and Jane Zbindin.

We have been asked to perform next year in the annual Women's Songfest but will not compete for prizes. We have many musical organizations on campus and there is a Mu Phi musically active in every one of them.

In May our president, Pat McGee, and Helen Bay sang in a concert with the University Madrigal Singers to entertain a delegation from Toledo, Spain. Pat is also prominent in Toledo as a soloist in various churches. Jeanine Zaugg sang the lead role in the University's production of "Oklahoma!" this year. She also sings with the Toledo Opera Chorus. Dianne Clark, our only freshman, and Dorothy Simlax were winners of full scholarships from the U. of Toledo for their music abilities this year. Helen Bay and Pat McGee won Mu Phi Epsilon achievement awards at May Honors Day, and Rachel Newcomb was the winner of the Mu Phi Epsilon scholarship. Our congratulations to all of them.

DIANE CLARK

### CLEVELAND

Cleveland Alumnae have followed their dinner meetings with interesting programs by members. Two guest concerts have also

been given. Meetings have been held in the homes of president Adah Hill, Frances Kelley, Thelma Goldsword, and Ruth Kaiser. September's "Evening with MacDowell" included a review by Adah and music by Carol Hann, Dixie Holden, and Enola Burdick. An Executive Board dinner at home of Catherine Vieth in honor of Province Governor Helen Maxwell preceded the October meeting. Gretchen Garnett sang Schubert's "Die Hirt auf dem Felsen" with clarinet obbligato by Norine Sharp, three "Elizabethan Songs" by Arnold Freed and the soprano arias from "Susannah" by Carlisle Floyd. Frieda Schumacher and Francis Grant played Beethoven's Sonata for Cello and Piano. In November the husbands of Nada Crews, violinist, and Marian Schenk, cellist, joined them in playing the "Concerto Grosso" by Geminiani and Mozart's "Fantasia." This string ensemble has given public programs, too. Elizabeth Taylor, contralto, accompanied by Lucile Boros, sang the "Eliland" song cycle by von Fielitz.

A lovely Mother-Daughter program was given in December by Estelle Miller, playing "Papillons" by Schumann. She also accompanied her daughter, Barbara, soprano, in Christmas music by Bach, Schubert, Eric Fogg, and Herbert Elwell. March featured Ruby Carroll and Thelma Goldsword at twin Steinways, and Norine Sharp and Lucile playing Mendelssohn's Sonata for Clarinet and Piano. The spring guest concert included Evelyn Morgan, soprano, Mary Lou Hunger, piano, Virginia Jennings, clarinet, Marian Davis, flute, and Barbara Rankin, piano, and was most enjoyable. Our continuing project of selling coupon books for the summer Pops Concerts of the Cleveland Orchestra makes possible our annual awards of \$50 each to an outstanding performer of Phi Omicron and Mu Phi chapters. Recent marriages: Cordetta Grossen to Joseph Valthausen and Margaret Perry to Manford M. Mondt.

Cleveland's music system lost Mabel McNary and Helen Nannen who have retired. Mabel has gone to Garnett, Kans., to care for parents, and Helen continues playing violin in Cleveland Women's Symphony and ensembles, and teaching at Cleveland Music School Settlement. Just returned from third European trip, Wilda Morey Donegan is her successor. Wilda directed All-City Elementary Orchestra at Ohio Music Educator's Convention here whose Chairman was Dixie

Holden, Cleveland Music Supervisor. Dixie conducts weekly television music appreciation classes for the schools and was pianist with the Schoolmasters' Quartet performances of Dohnanyi's "Quintet in C minor" at the Public Library.

Our two Alumnae Achievement Award winners were: Louise Anderson, organ, from Mu Phi, and Gayle Horn Ebert, harp, from Phi Omicron.

CATHERINE BENSON VIETH

### NORTH CENTRAL PROVINCE

#### LINCOLN

Lincoln Alumnae along with Mu Gamma will long remember June, 1962, as the month of our orbit to happiness and good fortune. For it was "rare as a day in June" that we won the right to be the 1964 Convention hostess and our Janese became National President. We surely can sit down and count our blessings—we knew all along she would be—we feel Mu Phi is mighty lucky and we are bursting with pride over her—she is one of the best!

But we can't sit too long. There are plans to be a-making, and our first get-together was at our annual July swim and picnic at the home of Dr. and Mrs. Hiram Hilton. They are Patrons of Lincoln Alumnae, and noted for their good food! Thirty members came with filled baskets, and we heard all about Convention, past and future, and made plans for the ensuing year.

We lost our President to Denver, but she left us in good hands, and there are always Mu Phi sisters coming back, or moving to Lincoln, so we'll have a busy season. Alice Bieberstein gave her home for a lovely tea in honor of departing ones, and to meet those members in town for the summer. It was a joyous reunion.

One of the summer's popular recital evenings was given by Audrey Cadwallader's eighteen piano students, ranging in age from six to fourteen, and they performed beautifully Brahms to Thompson. Our first fall meeting will be a Country Club luncheon. Our goal: Every Lincoln Mu Phi a member, and every member busy.

IRMA JEAN CROFT

### SOUTH CENTRAL PROVINCE

#### EPSILON EPSILON Texas Christian U

Epsilon Epsilon concluded its spring semester activities by initiating seven new members. To raise project money the spring pledges sold sandwiches in the girls' dorms and coffee and doughnuts in the Fine Arts Building lobby on Saturday mornings. An outstanding pledge was named and given an engraved charm in honor of her efforts.

The principal fund-raising project of the entire chapter was a picnic for all music students and music faculty members and their families. In a reverse action on the faculty (who require attendance of students at recitals), the Mu Phi members "required" faculty attendance at the picnic. Those teachers not attending were given the penalty of playing an instrument other than their own on a recital.

Closing activities for graduating seniors of chapter included a party with Phi Tau (North Texas State University) seniors given by Fort Worth Alumnae Chapter.

RANDIE JEAN GUENTHER

#### DALLAS

The Dallas Alumnae Chapter had varied and interesting programs for its spring meetings. In March we heard a lecture on Music Therapy by Dorothy Brin Crocker. Mrs. Crocker teaches Music Therapy at SMU and works with the children at Shadybrook School for the Mentally Retarded. She is also a Past President of the National Assn. of Music Therapy.

The program at our April meeting was presented by Tennie Lengel and Mary Jean Cook, pianists. April 3rd was our spring pupils recital in which sixteen students of ten teachers in our group participated.

We had the rare privilege of hearing our organists in a program in May at Perkins Chapel on the SMU campus. Joan DeArmond and Anna Marie Martinez, organists, and Mary Elinor Wayne, soprano, presented a very outstanding program.

Our year ended with a "tasting party" for members and guests at the home of Imogene Williams. Each member brought a

special dish, and our supper consisted of tastes of delicious gourmet dishes for a fee. The recipes were sold, also. It was a great success as a fun party for all, and a satisfying boost to our treasury.

CYNTHIA BLAIR WADLEY

## PACIFIC NORTHWEST PROVINCE

### PORTLAND

Highly successful in terms of enjoyment, attendance, and receipts was the twelfth annual Scholarship Musicale presented by the Portland Alumnae on March 27 at Trinity Episcopal Great Hall. Performers were Gloria Chan, winner of 1961 scholarship and member of Epsilon Delta chapter, who played the Beethoven Piano Sonata, Opus 53; Serena Rubin, violinist, Patricia Miller, violist, Julie Stone Underwood, cellist, and Aurora Potter Underwood, pianist, playing the Schumann Piano Quartet, Opus 47; Madelon Adler Petroff, pianist, Brahms' Waltzes, Opus 39; and a vocal ensemble giving Debussy's "The Blessed Damozel." Soloists for this were Carolyn Faulkner Foos and guest artist Anne Kathrens (substituting for Janet Davis Day). Members of the ensemble were Mary Lou Cosby, Doris Hilts Lavelly, Audrey Shirley Prindle, alumnae, and Kathleen Healy, Rosemary Douglas, Julane Rodgers, Linda Morgan from Epsilon Delta chapter. Director and accompanist was Catherine Dando Miller. Carolyn Foos was chairman of the concert, with Josephine Albert Spaulding in charge of the reception which followed. Due to the financial success of the concert, a second place award of \$50 was added to the usual \$100 and \$25 scholarships, and an additional sum was set aside for next year's fund. The \$25 scholarship was called the Marjorie Shanafelt Scholarship in honor of the donor, a member of the chapter.

The 1962 scholarship contest was held June 17 at the studio-residence of Aurora Underwood and the first place winner was Anne Kaufman, pianist and member of Phi Lambda chapter. Second and third place winners were Joanne Kollas, clarinetist and Charlotte Pye. Sharon Pedersen Gilbert was in charge of contest arrangements.

Bess Allen Butler was hostess for the March meeting at her Lake Oswego home, where Janet Davis Day sang several operatic arias, accompanied by Madelon Petroff, and Maxine Cady Barnes played Flor Peters' "Modale Suite" for organ, followed by her amusing impression of a young piano student.

In April at the home of Josephine Spaulding the program was given by guest artist Marie DeRungs who played Kodaly's unaccompanied cello Sonata, and then gave a most interesting demonstration of the music of the viola de gamba. She is on the faculty of Lewis and Clark College, and plays with the Portland Symphony.

May meeting was at the home of Betty Bennett Cramer. Florence Kinney, Mu Phi from McMinnville, and Extended Area member of Portland Alumnae, played numbers by Haydn and Brahms. Florence is Professor of Music at Linfield College. Audrey Prindle closed the program with a group of art songs and folk songs and spirituals.

Our annual summer picnic was held on August 7 at the Tualatin River home of the parents of Lois Roeder Critchlow. Pearl Allison Peterson received delighted congratulations upon her new appointment to National Council as Editor of "TRIANGLE." Pearl has held various offices in the chapter including presidency, produced the chapter newsletter for seven years, has been District Director #17, and chairman of "Metronome."

JEAN CRITES COMPTON

## PACIFIC SOUTHWEST PROVINCE

### PHI NU

### U.C.L.A.

The spring semester began with a formal rush tea at which Judy Klinger sang Mussetta's "Valse" and Mary Macdonald played the Liszt "Etude after Paganini" in g minor. Our outstanding pledge class was initiated in April: Patricia Morris, flute, Nancy McCord, Diana Conway, Helen Peel, piano, and Nancy Graham, music history. As a pledge project they prepared a program for the Veterans' Administration Hospital, a monthly activity of Phi Nu. A highlight of

the April spring concert was the performance of two works by Lee Smit, noted composer on the U.C.L.A. music faculty. Among the other compositions presented were "Il est doux, il est bon" by Massenet, sung by Verna Wetherbee and some delightful French bergerettes performed by Judy Klinger. Both are singers in the U.C.L.A. Opera Workshop. Phi Mu Alpha shared the program.

On April 15 we were guests of SAI and performed with them in a Musicale. The emphasis was on Mozart. Pamela Pepkin and Mary Macdonald played the F Major Sonata for Piano, four hands, Beth Temkin sang "Das Veilchen" and Judy Klinger sang Cherubine's arias from "Marriage of Figaro."

A highly festive and successful afternoon coffee hour was given in April for the students and faculty of the music department. Later in the month we were hostesses at a reception for the Composers' Symposium for which student-composers were selected from many California colleges and invited to present and discuss their works.

The annual Mu Phi Epsilon trophy for the most original choral arrangement was presented by Jacqueline Doyle to the winning Spring Sing entry at the Hollywood Bowl. The last of the semester's events was the May dinner meeting, at which the guest speaker was Dr. Jan Pepper, opera conductor, pianist and raconteur. It was a memorable evening with performances by our own members and superb accompaniments by Dr. Pepper. The spring candy sale was a very successful one and will make possible our fall plans. We are very grateful to our President, Cynthia Grayson, for her dynamic leadership in initiating new ideas and in coordinating the many activities of the semester.

LINN EADES

### PASADENA

Our spring activities included the two concerts produced by Evelyn Moller Tannehill: the oratorio, "Elijah," and "An Evening of Opera," assisted by her daughter, Jane.

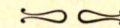
Williametta Spencer, twice winner of the national Mu Phi contest for original compositions, was honored with a tea-reception at Sue Campbell's home, with president, Helen Matsinger Butt, receiving. Creative

hobbies featured our exciting April meeting. Original compositions by Bernice Gerrish, Charlotte Bond Packard, and Grace Gross Wilkins were performed by various members. Dress creations, paintings, sculpture, plastics, and metal-crafts were displayed to an enthusiastic group.

Marjorie Duff and Louise Paulson are president and secretary, respectively, of Music-Arts Club.

Gail Ann Higgins, pianist, is a new member of Mu Nu chapter, USC. She is daughter of Elsie Standing Higgins, a nationally known teacher of wide experience.

MABEL COCHRAN HEITSCHMIDT



## BOOK SHELF

*(Continued from page 33)*

tive and passive. Active gestures are characterized by "impulse of will," defined as, "the vital quality of the conductor, upon it depend . . . definition of rhythmic beat . . . leadership of the conductor . . . realization of the conductor." "Interpretative technique takes in more than the science of time-beating."

Section II, Score Study, opens with Chapter nine, which explains clefs and transposition with great clarity. The following three chapters contain "Mechanics" of Choral, Orchestral, and Band scores with three more corollary chapters on "Interpretation" of the same. Valuable instruction is provided the conductor on memorization of score and preparation for performance. Section III, Mastery, is a consummation of technique into actual conducting, placing the conductor on the podium, with discussion of "melded gestures," "psychological and creative conducting." "If, in addition to this he is making music as a conductor," he may then be ready for "creative conducting," which "centers the leader's own individual personality" and "is safe only when a state of genuine poise and confidence has arrived." Wise advice in closing, "Keep modest, work hard, and do not forget the composer." The voluminous appendixes and indexes are very valuable.

ALMA LOWRY WILLIAMS  
*M.Mus., Prof. Emeritus,  
San Jose State College  
San Jose, California*

# Directory

MU PHI EPSILON was founded at the  
Metropolitan College of Music in Cincinnati, Ohio, on November 13, 1903

## FOUNDERS

DR. WINTHROP S. STERLING, died November 16, 1943  
ELIZABETH MATHIAS FUQUA (Mrs. John W.), died May 17, 1950

## PAST NATIONAL PRESIDENTS

Elizabeth Mathias Fuque (deceased), A, 1904-05, 07, 08  
Myrtal Palmer Leach (deceased), I, 1905-07  
Elfrida Langlois Kent (deceased), Δ, 1908-11  
Alice Davis Bradford Peck (deceased), A, 1911-13  
Ora Bethune Johnson (deceased), Θ, 1913-15  
Mary Towsley Pfau (deceased), A, 1915-16  
Roxielettie Taylor Yeates (Mrs. John), Θ, 1119 Rumsey Ave., Cody, Wyo., 1916-17  
Harriet Thompson Wright (deceased), X, 1917-20  
Doris Benson (Mrs. Walter), IA, Spikeswood Farm, Woodruff, Wis., 1920-22  
Persis Heaton Trimble (deceased) MA, 1922-26  
Lucille Eilers Brettschneider (Mrs. August, Jr.), A, 3426 Morrison Place, Clifton, Cincinnati, Ohio, 1926-28  
Orah Ashley Lamke (Mrs. Geo. W.), Δ, R.R. 3, Box 422-D, Golden, Colo., 1928-30  
Bertha M. (King) Van Tilburg (Mrs. V. B.), ME, 1485 Sunrise Dr., Vista, Calif., 1930-32, 34-40  
Dorothy Elizabeth Paton, I, Observatory Lodge, Apt. 304, 1402 Washington Heights, Ann Arbor, Mich., 1932-34  
Elizabeth Ayres Kidd (Mrs. A. Eugene, Jr.), MΞ, 1553 Hawthorne Lane, Glenview, Ill., 1940-42  
Ava Comin Case (Mrs. Lee O.), I, School of Music, University of Michigan, Ann Arbor, Mich., 1942-48  
Dr. Margaret Wible Walker, MN, California Western Univ., San Diego, Calif., 1948-50  
Ruth Row Clutcher (Mrs. John), O, R.D. 1, Selinsgrove, Pa., 1950-54  
Eleanor Hale Wilson (Mrs. P. Raymond), T, 2800 39th Ave. W., Seattle 99, Wash., 1954-58  
Rosalie V. Speciale, ΦM, 560 North First, San Jose 12, Calif., 1958-62

## NATIONAL COUNCIL 1962-1964

*National President:* Janese K. Ridell, MI, 1141 Eldon Dr., Lincoln 10, Neb.  
*Nat'l First Vice-President, (Extension):* Bettylou Scandling, IA, 62 West 56 St., New York, 19, N.Y.  
*Nat'l Second Vice-President, (Collegiate Adviser):* Lois Ayres Gordon (Mrs. Russell E.), ΦII, 225 S. Poplar, Wichita 11, Kan.  
*Nat'l Third Vice-President, (Alumnæ Adviser):* Edna Mae Kriz Sila (Mrs. Louis H.), MΨ, 1017 21st St., SE, Cedar Rapids, Iowa  
*Nat'l Fourth Vice-President, (Music Adviser):* Beth Kalmbach Shafe (Mrs. Fred J.), ΦK, 14811 Ashton Blvd., Detroit 23, Mich.  
*Nat'l Fifth Vice-President, (Academic Adviser):* Virginia Hooganakker, EI, 3304 W. Capitol St., Jackson, Miss.  
*Nat'l Sixth Vice-President, (Contests Adviser):* Janet Adams Wilkie (Mrs. Richard F.), T, 5744 34th NE, Seattle 5, Wash.  
*Nat'l Seventh Vice-President, (Public Relations Officer):* Opal Hornback Skolnick (Mrs. S. I.), MN, 1047 Sycamore Ave., Vista, Calif.  
*Nat'l Editor:* Pearl Allison Peterson (Mrs. Howard M.), ΦN, 13548 NE Glisan, Portland 30, Ore.

## NATIONAL EXECUTIVE OFFICE

*Nat'l Executive Secretary-Treasurer:* Virginia Porter Fiser (Mrs. Van E.), Ξ, 1139 N. Ridge-wood Dr., Wichita 8, Kans.

## NATIONAL CHAIRMEN

*Friendship Corner:* Lucile Ferris (Mrs. Carl R.), 629 West 70 Terrace, Kansas City, Mo.  
*Magazine Subscription Agency:*

Dorothy Miles McNeil (Mrs. Tom E.), 4132 Vesta Dr., Wichita 8, Kans.  
*Marie Morissey Keith Scholarship Award and Elizabeth Mathias Honor Awards:*  
Eilene Risegari (Mrs. Silvio), 4102 37th NE., Seattle 5, Wash.  
*M Φ E Artist Members:* Dorothy Barr Lemon, 21 Claremont Ave., New York 27, N.Y.  
*M Φ E School of Music at Gads Hill Center:*

Director: Winifrid Erickson, 6620 N. Oshkosh Ave., Chicago 31, Ill.  
Treasurer: Alma E. Grambauer, 1380 Henry St., Des Plaines, Ill.  
Representative on Settlement Board: Marie Mueller Wallerich (Mrs. George W.), 511 Forest Ave., Oak Park, Ill.  
*Music Librarian:* Esther Wiedower, 2913 Swan Pl., Los Angeles 26, Calif.  
*Music Therapy:* Viola Anderson (Mrs. Henry O.), 1038 First St. N., Fargo, N.D.  
*National Convention:* Frances Bolton Hallett (Mrs. Sheldon), 3434 S. 28th, Lincoln, Neb.  
*Ritual:* Mabel McCoy Henderson, Gatesworth Manor, 245 Union Blvd., St. Louis 8, Mo.  
*Sterling-Mathias Scholarships at Interlochen:* Miriam McLaughlin (Mrs. R. H.), 1714 Hermitage Rd., Ann Arbor, Mich.

## DISTRICT DIRECTORS

### District

- Joyce Gibson, 390 Riverside Dr., #12AB, New York 25, N.Y.
- Adele Bouricius, 649 Valley Forge Rd., King of Prussia, Pa.
- Mary Jane Harvey, 215 Lebanon Ave., Pittsburgh, Pa.
- 
- Camilla Ayres, 634 Neff Rd., Grosse Pointe 30, Mich.
- Willena Schlueter, 2022 Arrowood Place, Cincinnati 31, Ohio
- Annette Albright, 3212 Amherst, Muncie, Ind.
- Maribel Meisel, 5424 S. Cornell, Chicago 15, Ill.
- Cecile Coombs, 545 Washington Place, East St. Louis, Ill.
- Borghild Torvik, 1019 9th Ave. S., Moorhead, Minn.
- Janet Robinson, 1136-26th St., Des Moines 11, Iowa
- Mariette Simpson, 926 Grand, Emporia, Kan.
- Martha Barkema, 919 S. 8th, Waco, Tex.
- Mary Ruth McCulley, 2119 Jackson, Amarillo, Tex.
- Shirley Johnson, 4257 S. Lincoln, Englewood, Colo.
- 
- Rachel Welke (Mrs. Walter), 5607-16th NE, Seattle, Wash.
- 
- Ann Scammon, 4695 Frances Ct., Sacramento 18, Calif.
- 
- Barbara Allen, 3211-A Fifteenth St., Gulfport, Miss.
- Willa Lowrance, 1184 Hancock Dr., NE, Atlanta 6, Ga.

## ANNUAL SCHOLARSHIPS

Edward MacDowell Association	Neighborhood Music School, Los Angeles, Calif.
National Music Camp, Interlochen, Mich.	Community Music School, Inc., St. Louis, Mo.
Aspen Festival and School, Aspen, Colo.	
Friendship House, Washington, D.C.	

## NATIONAL AFFILIATIONS

National Federation of Music Clubs	National Ass'n of American Composers and Conductors
Musicians National Association	National Music Council
Musical Educators National Conference	National Ass'n for Music Therapy (sustaining member)
National Association Schools of Music	National Guild of Community Music Schools (auxiliary member)
Professional Panhellenic Association	
The Council of Organization of Music for the Blind, Inc.	



# GADS

# HILL!

MAGAZINES . . . FOR GIFTS  
FOR YOURSELF

## THINKING About Your *Christmas* Shopping List?

With Mu Phi handy, you face no fuss  
Relax and leave your Shopping to us . . .

From N.E.O. may we suggest:

*For a Mu Phi sister:*

- 1—A year's subscription to "TRIANGLE" (credit ahead can be given) only \$1.50
  - 2—A M Φ recognition pin—" \$1.75
- send orders through chapter Treasurer or write N.E.O. direct.

From Friendship Corner: through chapter representative or direct to  
LUCILE FERRIS, 629 WEST 70TH TERRACE, KANSAS CITY, MO.

*For a Mu Phi or a non-Mu Phi:*

- 1—A M Φ Tea Tile—#107—just \$3.00 for table or wall
  - 2—Note Paper or Post Cards
  - 3—Copper, Silver or Rhinestone music symbol jewelry
- see catalogue at chapter for order number and prices*

*For a M Φ Patroness:*

- 1—A "TRIANGLE" subscription, Friendship Corner item or a Patroness pin, under \$5.00

*For Collegiate M Φ:*

M Φ E Sweater (\$4.50), jewelry, stationery—recognition pin—refer to Friendship Corner catalogue.

*For music pupils:* Awards pins @ 50¢, violin or piano, see catalogue

FOR ANYONE—Mu Phi, non-Mu Phi—male or female—

A Magazine Subscription or Renewal through chapter Magazine Chairman

**CHRISTMAS IS SOONER THAN YOU THINK**  
(there are birthdays, too)

## 1962-63 *Collegiate Chapter Calendar*

N.E.O. Address: 1139 N. Ridgewood Dr., Wichita 8, Kansas  
National Editor Address: 13548 N.E. Glisan, Portland 30, Oregon

### FIRST WEEK OF SCHOOL:

*President:* Call meeting of chapter officers to inspect chapter equipment, give officers materials sent from N.E.O. and make plans for year.  
Return official form *immediately* to N.E.O. giving address changes of officers and members of chapter.  
Order supplies for year, Form #3.  
Send name of chapter Magazine Chairman to Dorothy McNeil, 4132 Vesta Dr., Wichita, Kansas.

**NOVEMBER 1:** *Deadline* for sending in fall stationery orders.  
**13:** FOUNDERS DAY  
*Treasurer:* Send voluntary contribution of 59¢ per chapter member to N.E.O., enclosing Form #3.

### DECEMBER 1:

*{Treasurer:* *Deadline* date for mailing annual national taxes to N.E.O.  
*{Corresp. Secy.:* Send check and 2 copies of Form #2.  
Send TRIANGLE subscription renewals to N.E.O., use Form #1.  
*President:* Send fall report form to your Province Governor concerning chapter activities and problems.  
Send copy to National 2nd Vice President, Lois Gordon.  
Set date for Work Party, write your District Director.

### FIRST MONTH OF SECOND SEMESTER or NO LATER THAN FEB. 28, 1963:

*President:* Elect new chapter officers.  
*Corresp. Secy.:* Send names and addresses of new officers *immediately* to N.E.O., returning 10 copies of official forms. NO EXCEPTIONS.  
*Chapter:* Plan Work Party for date set with District Director.

### MARCH 31:

*Magazine Chairman:* Magazine Agency fiscal year ends; to qualify for commissions on this year's sales, send orders *before this date* to Dorothy McNeil.

### APRIL 1:

*President:* *Deadline* for ordering stationery for spring delivery. Send spring report form to your Province Governor, with copy to National 2nd Vice President, Lois Gordon.

### MAY 1:

*Treasurer:* *Deadline* for sending spring initiations to N.E.O.  
**31:**  
*Treasurer:* *Before this date* send all contributions for national projects to N.E.O.  
*President:* One week after TRIANGLE bundles received, return TRIANGLE tape to N.E.O.

### JUNE 1:

*Deadline* for manuscripts for Original Composition Contest being mailed to National 6th Vice President, Janet Wilkie, 5744-34th N.E., Seattle 5, Washington.

### HISTORIANS:

*Deadlines* for sending material and chapter letters to TRIANGLE editor:  
JULY 15 (for Oct. issue), OCTOBER 15 (for Jan. issue)  
DECEMBER 15 (for March issue), MARCH 15 (for May issue).

# 1962-63 Alumnae Chapter Calendar

N.E.O. Address: 1139 N. Ridgewood Dr., Wichita 8, Kansas  
 National Editor Address: 13548 N.E. Glisan, Portland 30, Oregon

## SEPTEMBER, 1962:

*President:* Call meeting of chapter officers to make plans for year.  
*Corresp. Secy:* Report *immediately* to N.E.O. address changes of all officers and chapter members, on official form.  
 Order supplies for year.  
 Send name and address of chapter Magazine Chairman to Dorothy McNeil, 4132 Vesta Dr., Wichita, Kansas.

## NOVEMBER 1: 13:

*Treasurer:* **FOUNDERS DAY.**  
 Send voluntary contribution of 59¢ per chapter member to N.E.O., enclosing Form #3.

## DECEMBER 1:

*President:* Return fall report letter to National 3rd Vice President, Edna Mae Sila, with a copy to your Province Governor.

## JANUARY, 1963:

15:  
*Treasurer:* *Corresp. Secy.:* **Deadline** for sending annual national taxes (\$5.00 each) to N.E.O., enclosing 2 copies of Forms #1 and #2.  
 Renew TRIANGLE subscriptions for chapter members on that form too.

## FEBRUARY:

Elect new chapter officers. (Officers do not need to be installed until May.)

## MARCH 1:

**Deadline** for returning to N.E.O. on official forms, 10 copies of list of new chapter officers. NO EXCEPTIONS.

31:

*Magazine Chairman:* Magazine Agency fiscal year ends; to qualify for commissions on this year's sales, send orders *before this date* to Dorothy McNeil.

## APRIL 1:

*President:* **Deadline** for ordering stationery for spring delivery.  
 Send spring report form to National 3rd Vice President, Edna Mae Sila, with a copy to your Province Governor.

## MAY 31:

*Before this date*, send all chapter contributions for national projects to N.E.O.

## JUNE 1:

**Deadline** for sending manuscripts for Original Composition Contest to National 6th Vice President, Janet Wilkie, 5744-34th N.E., Seattle 5, Washington.

## HISTORIANS:

*Deadlines* for sending material and chapter letters to TRIANGLE editor:

JULY 15 (for Oct. issue), OCTOBER 15 (for Jan. issue)

DECEMBER 15 (for Mar. issue), MARCH 15 (for May issue).

# Wear Your Pin with Pride...

IT IS A MARK OF DISTINCTION AND REFLECTS THE RICH TRADITIONS OF YOUR LIFE.

## MU PHI EPSILON

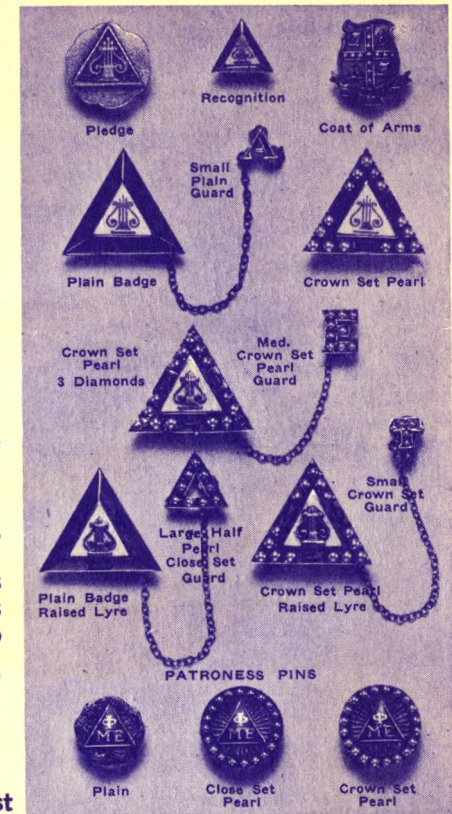
### INSIGNIA PRICE LIST BY YOUR OFFICIAL JEWELER

Recognition pin, 10K gold .....	\$ 1.75
Pledge pin, sterling silver .....	1.00
Plain badge, flat lyre .....	5.50
Plain badge, raised lyre .....	6.75
Close set pearl badge, raised lyre .....	12.25
Crown set pearl badge, raised lyre .....	17.00

GUARD PINS	Single	Double
	Letter	Letter
Plain yellow gold .....	\$2.75	\$ 4.25
Close set pearl .....	5.50	9.25
Crown set pearl .....	7.75	14.00

10% Federal Tax and any State or City Taxes in addition to all prices.

Write for complete insignia price list



*L. G. Balfour Company*  
**ATTLEBORO MASSACHUSETTS**

IN CANADA L. G. BALFOUR COMPANY, LTD. MONTREAL AND TORONTO

INSIGNIA LISTED above and carried in stock for immediate delivery, is of yellow gold. If white gold is preferred, add \$3.00 for plain badge and \$5.00 for jeweled badge. White gold insignia is special, requiring three weeks for manufacturer.

REGULATIONS—Orders for official insignia should be placed with the Mu Phi Epsilon National Executive Office.

YOUR GUARANTEE OF...

- UNMATCHED QUALITY
- PERFECT SATISFACTION

Postmaster: Please send undeliverable copies to Mrs. Van Fiser, 1139 North Ridgewood Drive, Wichita 8, Kansas

## THE MU PHI EPSILON CREED

I BELIEVE IN MUSIC,  
the noblest of all the arts,  
a source of much that is  
good, just, and beautiful;  
    IN FRIENDSHIP,  
marked by love, kindness, and sincerity;  
    AND IN HARMONY,  
the essence of a true and happy life.

I BELIEVE IN THE SACRED BOND OF SISTERHOOD,  
loyal, generous, and self-sacrificing,  
and its strength shall ever guide me  
in the path that leads upward  
toward the stars.

Ruth Jane Kirby, Omega