

U. 59 #1

the
TRIANGLE
of
MU PHI EPSILON



SEPTEMBER 1964

Message For Founders Day

On November 13, 1903, our Founders, Winthrop S. Sterling and Elizabeth Mathias, entrusted to thirteen young girls the ideals of service through music and the bonds of sisterhood. That same trust has been given in equal measure to each of us through the six decades since. It joins us now, as the candles we light in their memory brighten our path to greater achievements.

Janet A. Wilkie
National President

THE TRIANGLE of Mu Phi Epsilon, international professional music sorority, is published quarterly, in September, December, February, and May. George Banta Company Inc., is official printer and publisher at Curtis Reed Plaza, Menasha, Wisconsin. The subscription price is \$1.50 a year, single copies, 40 cents. All copy is to be sent to the Editor, Pearl Allison Peterson, 220 Greenstone Dr., Reno, Nevada 89503, observing deadlines which are June 15, September 10, November 1, and February 1. Business Correspondence and Subscriptions to be sent to National Executive Office, 1139 N. Ridgewood Drive, Wichita, Kansas 67208.

Second class postage paid at Menasha, Wisconsin. Printed in the United States of America. Application for transfer of location of original second class entry from St. Paul, Minn., to Menasha, Wisconsin has been made.

POSTMASTER: Send all changes of address to 1139 N. Ridgewood Drive, Wichita, Kansas 67208.

The Triangle

SEPTEMBER • 1964
VOLUME 59 • NUMBER 1

OF MU PHI EPSILON

Contents . . .

	PAGE
Message for Founders Day	<i>Inside Front Cover</i>
Mu Phi Epsilon International Activities, 1963-1964	2
Memorial Foundation—Sterling Staff Concert Series	4
National Music Council Presents Conductor Citations	6
Konkombaland	<i>Gretchen Weed</i> 7
Convention Hosts Plan Early	12
Haworth Bequest Memorial to Gail Martin Haake	<i>Alma E. Grambauer</i> 13
<i>Bach Suites</i> Manuscripts Found by Markevitch	14
The Fabulous Bayanihan	15
Tribute—Verna Straub	16
Collegiate Tempo	17
Scholarships and Honors	18
Performances	22
Chapter and Campus, 92 <i>Alpha Chi</i> Welcome	26
Service	29
Alumnæ Tempo	33
Riverside Becomes 70th Alumnæ Chapter	34
Cincinnati Alumnæ Golden Anniversary	35
Creativity	36
Service	43
Interlochen Winners of Mu Phi Epsilon Scholarship	46
Music Therapy Gains New Dimensions in Salem	<i>Myra Brand</i> 48
Leadership	51
“. . . our inner shrine is ever bright . . .”	53
Awards, Contests, Competitions	55
Directory	56
Collegiate Calendar	63
Alumnæ Calendar	64

Acknowledgment to following for use of pictures: Victor Rácz, Allen Park, Michigan; H. Hewett, Cleveland, Ohio; Somerville, Williamsport, Pennsylvania; Bruno, Hollywood; Stuckey's Arlington, Virginia; Don Bierman, Urbana, Illinois; PHOTO-GRAPHIC, Beaverton, Oregon; Des Moines Register and Tribune.

MU PHI EPSILON INTERNATIONAL MUSIC ACTIVITIES FOR 1963-1964

*report from
national president*

by JANET A. WILKIE

During 1963-1964 MU PHI EPSILON has continued its international music activities and interest, long an important element of the sorority's endeavors.

Following is a résumé of the most significant contributions by the sorority during the past season:

Gifts of Music Materials Sent Abroad by Chapters

Gifts of varied music materials totaling 2,389 pounds were collected by individual chapters and sent by them to organizations and individuals abroad. Of this total 591 pounds were sent by collegiate chapters, and 1,798 pounds were sent by alumnae chapters. Recipients were the School of Music of Silliman University, Dumaguete, P.I., *Alpha Tau* chapter, Philippine Women's University, Manila, P.I.—for their newly-formed lending library—and Our Africa Music In-

stitute in Roodepoort, Transvaal, South Africa. In addition, a gift of music books was sent to the Books for Asian Students project.

Gifts of Music Materials Sent Abroad by the National Organization

A library of choral music totaling 2,500 pounds was shipped to four overseas groups. This music, no longer required for its library, was made available to MU PHI EPSILON by the New York Federation of Music Clubs. The sorting, packaging, financing and shipping were done by MU PHI EPSILON. This catalogued library of choral music in multiple copies was distributed as follows: 231 pounds to *Alpha Tau* chapter; 1,529 pounds to Silliman University; 750 pounds to Our Africa Music Institute; and 14 pounds to People to People Program, Formosa, Free China.



GERTRUDE OTTO and DR. MERLE MONTGOMERY viewing some of the 2,500 pounds of music done up in 11-pound packages.

Service Through Music By Collegiate Chapter Abroad

Alpha Tau chapter of MU PHI EPSILON, established in 1962, at the Philippine Women's University, Manila, has contributed to the musical welfare of the school and community by

- 1 establishing a music-lending library at the Philippine Women's University with materials received from MU PHI EPSILON chapters in the United States, and
- 2 giving programs at the School of Deaf and Blind and at the National Orthopedic Hospital in Manila, in addition to the usual public concerts every chapter gives.

Services to Foreign Music Organizations and Individuals

Throughout their five-month U.S. tour in the spring of 1964, members of the Bayanihan Philippine Dance Company were welcomed and entertained by chapters of MU PHI EPSILON across the United States.

By assisting with expenses, MU PHI EPSILON is making it possible for Ruth Buot, graduate of Philippine Women's University and first president of *Alpha Tau* chapter there, to attend the National Convention in August, 1964.

Outstanding Contributions By Members Abroad

Dr. Lucrecia R. Kasilag, Dean of Music and Arts of Philippine Women's University, has been an international ambassador of good will through music, by her work as composer and educator, music director of the world-famed Bayanihan Philippine Dance Company, and board member of the International Society for Music Education.



PORTLAND ALUMNAE with Bayanihan sisters: HILDA ALICER, *Alpha Tau*, MARGARET GABRIEL, LUCRECIA R. KASILAG, Manila, PEARL PETERSON, *National Editor*, BERTHA MACDOUGALL, ROSA PUERTOLLANO, *Alpha Tau*, and JEAN HARPER.

Miriam Palmore, Professor of Music at Silliman University, Dumaguete, P.I., plays an important part in the music life of the school and community.

Faye G. Schick Smith, organist, teacher, lecturer and writer, and co-founder of Our Africa Music Institute until recently located in Roodepoort, Transvaal, South Africa, published a music magazine there and is teaching music to South Africans, including many blind students.

These activities in the area of international music are but a continuation of MU PHI EPSILON's many contributions in this field, which in past years have included such other things as gifts of instruments, music and money to Music for Youth Association in Japan, a grant of \$1,000 to a foreign music student attending a university in the United States, and a gift of \$1,000 in the past four years to Silliman University for the purchase of a piano and other needs.

MU PHI EPSILON is proud to make this report, on their request, to the U.S. National Commission for UNESCO as a member organization of National Music Council.

Mu Phi Epsilon

Memorial Foundation

Sterling Staff Concert Series

a new project for a new organization

When the MU PHI EPSILON MEMORIAL FOUNDATION was established in 1963, it inaugurated as its first project the Sterling Staff Concert Series. This was the name given to a plan that is unique in professional sorority activities.

It aims to give performance opportunities to young, talented members of MU PHI EPSILON, so that they may be heard outside of their own area. It grew out of perhaps the greatest need facing musical life in America today—finding a way for talented performers to be heard. The development of talent has reached a high point of excellence in the standards of instruction of colleges, universities, and schools of music. The greatest teachers are found in this country, and the center of music in the world today is without doubt New York City. While in school, student talent is brought to a high level of proficiency by careful teaching and constant performance. Scholarships and awards do much to further develop skillful and artistic

performers. But after graduation the opportunities for concert performance on the professional level, except for the very few (and, regrettably, for women performers, these are even fewer), are very scarce. Outside of the commercially managed concerts there is a great void between the talent waiting to be heard and audiences to listen.

This is the aim of the Sterling Staff Concert Series—to do its share to bring together the outstanding talent of the sorority and those waiting and willing to hear them. It aims to do this by utilizing the national scope of the sorority through its chapters located throughout the country. It hopes to enlist the help of chapters to provide outlets for talented members to be heard. Chapters are being urged to sponsor talented artist members in concerts in their local areas. These concerts may be benefit recitals for scholarships, formal recitals, or the kind of event best suited to the locality for bringing together young artists and

local audiences. Travel expenses for the performing artists to the sponsoring chapters will be paid by the Memorial Foundation; local expenses will be paid by sponsoring chapters.

The search to find the talented artists between the ages of 18 and 25 was begun in the spring of 1964. Preliminary auditions discovered five members eligible to perform in final auditions. Those selected were: Ann Rylands, violinist, from *Epsilon Psi* at Juilliard School of Music, New York; Virginia Marks, pianist, from *Alpha Eta* at American University, Washington, D.C.; Lynn Lewis, pianist, from *Mu Nu* at University of Southern California, Los Angeles; Sharon Powell, contralto, from *Phi Xi* at Baylor

University, Waco, Texas; Mariza Fishinger, mezzo-soprano, from *Phi Sigma* at De Paul University, Chicago.

Winners of final auditions, held in Lincoln, Nebraska, during the National Convention, will be available for the 1964-66 biennium.

Aiding this new project will afford the opportunity for chapters to be part of a unique service never before attempted by a professional music sorority. It will also carry forward the aim of Founder Winthrop S. Sterling, for whom the project was named, who said, "The possibilities for doing good by such an organization are indeed many, but it may mean some sacrifice to do that good for, and to be of that service to others."

send contributions

to

Mrs. Agnes Helgesson

26925 St. Francis Dr.

Los Altos Hills,

California

*Contributions may be specified for the
John F. Kennedy Memorial Fund.*

Remember

the

Mu Phi Epsilon

Memorial
Foundation

through it the

fine work

of

this sorority

will

Grow and Grow

National Music Council presents Conductor Citations

At the annual meeting of the National Music Council, held on May 14, in New York City, Dr. Howard Hanson, president, presented Conductor Citations to Richard Korn and Thor Johnson "For Outstanding Services to American Music."

Richard Korn, conductor of the Orchestra of America, was honored for his "catholicity of taste" in presenting American music of the present and past. A list of 95 works by 75 composers which have been performed by this orchestra in four years disclosed but one woman's name, Alice Hunt Sokoloff.

Thor Johnson has personally commissioned over 200 works by almost that many American composers.

Results of a study made by a National Music Council committee on better ways to award these citations was given. While these citations as given have been excellent and well-deserved, it was felt that not only con-

ductors but any individual or organization which has performed a unique service for American music should be considered. Under the new plan, to be described later, any member organization may make documented nominations, and the burden of proof will be on the person or group which does the nominating. Two examples of documentation were distributed. One was a list of American works performed at the National Gallery in Washington, D.C., by the composer-conductor, Richard Bales. His special contribution extends into the emphasis on music directly connected with United States and its history. This list contains the names of MU PHI EPSILON members Mabel Daniels (*Digressions for Strings*) and Emma Lou Diemer (*Symphony No. 2 on American Indian Themes*) and at least two other women composers. The second list enumerated 97 performances of 63 compositions by 36 American composers in one month of 24-hour a day broadcasting by a radio station which performs all works without pause. Dr. Hanson asked how unique this is and how many stations are doing this good a job. He asked members to report any similar station achievements, since a job of this nature is done in the face of enormous economic odds.

•

*December Issue: Convention—1964—
Full Report—Pictures—Stories—Speeches*

•

This story comes from a member now living in Ghana, working in the missionary field of linguistics, and observing, through her own musicianship, the musical scene of this fascinating part of our world. It is told with such warmth and enthusiasm that TRIANGLE did not feel it should be condensed, but, rather, be given in two parts. Part I will tell of the people with whom she is working, and Part II, in the next issue, will tell of their music.

Konkombaland

by Gretchen Weed
Epsilon Iota

Excerpt from letter to Lois Thomas Iller:

"I played my trombone for the Police Band in Accra. What an experience! They nearly put me on radio Ghana, but I made it to the tribe first."

WHEN I CONSIDERED HOW to tell of a Mu Phi on the mission field, it seemed rather a difficult task. Music has been a part of my life since childhood and more specifically after beginning the trombone at eleven. MU PHI EPSILON became important to me in my first year at Eastern Washington State College (then Eastern Washington College of Education), and I cannot explain how truly initiated I felt the day that I vowed to be a loyal member of MU PHI EPSILON. The mission field became a part of my life after another event that caused me to be something new—that was the day I realized and believed in the deity of Jesus Christ and that therefore He has the power to forgive sin and the ability to empower a person to live a new life.

After college I taught music in a small town. Now I live in a very different small town and I am the student. I am learning an unwritten language by the process of descriptive linguistics which means writing what

I hear phonetically and then analyzing the language patterns. Later an alphabet, which will be acceptable to the people and to officials, must be drawn up, then in future years we will be producing a dictionary and a grammar. In due time, too, we will begin literacy work with its primers, story books, books of a helpful nature (such as hygiene, first-aid, and arithmetic), and perhaps a little monthly newspaper. We seek to work closely with the University and Government agencies and our Summer Institute of Linguistics¹ is affiliated to the Institute of African Studies of the University of Ghana.

My missionary goal is the translation of the New Testament into the Konkomba language. This is my part of the purpose of the Wycliffe Bible Translators who desire to see the New Testament in all of the remaining unwritten languages of the world. (You may have visited our Pavilion of 2,000 Tribes at the World's Fair in New York City.)

GRETCHEN and AUDIENCE



Our language work takes place in a Konkomba village two miles off a second class road. The surrounding area is a flat almost treeless plain in the savanna grassland. From November to May it is very hot, dry, windy, and dusty; moreover, the lack of water is a serious problem at this time. From June to October it is still hot but very humid as the torrential rains come then, turning everything green. At no time, however, does it ever resemble anything like a jungle. Barren might be the best description.²

The Konkomba people live in isolated villages and spend most of their time farming yams (a massive root potato), and Guinea corn (sorghum). Maize, millet, rice, black-eyed beans, and peanuts also are grown and there is some hunting and fishing. We have seen only one vegetable, okra, and no fruit. There are some wild berries occasionally, and various tree leaves which are used in soup. The lush tropical fruits just do not grow here (but we are tenderly and hopefully watering some paw paw trees with our bathwater.) We intend to grow a vegetable garden in the wet season to supplement all the canned foods, yams, and Guinea corn that we eat. Fresh eggs and meat are hard to obtain; also, we may raise a few chickens.

A Konkomba compound (home) consists of a cluster of round rooms with thatched conical roofs. These rooms are joined together by walls into a rough circle. Always facing south is the entrance hall. The people very graciously offered to build our compound, and the local council (county government) helped, too, by supplying some wood, tin roofing and cement. I am afraid we do not look like a "typical" Konkomba household but it is close. The rooms are all built

of mud and plastered with cow dung to make them waterproof. (Was it a coincidence that on the day the women were plastering our kitchen my partner served ox tail soup for lunch?) The walls need to have a good rock foundation and be thick enough to withstand the flooding of the rainy season. These lessons came home to us when we saw our own hall collapse! We learned one more thing—the roofing grass must be tied down securely. During a terrific wind storm one of our roofs peeled off like an onion skin.

We are trying to identify with the people as much as possible, by learning their language, by having a house like theirs, by eating most of their foods. When it comes to clothes it is more difficult as the women usually wear only a wrap around skirt. The men wear shorts. On market day (every six days) we see their best clothes. The women put on gay print cloths with matching blouses and stoles in which they carry their babies on their backs. On their heads they balance their goods in their finest enamel pans. The men don Northern smocks and berets (a rather medieval look) or flowing Biblical-type robes.

Though the Konkombas are lean from their harsh environment, they are hard workers, friendly, and generous. In the group they appear independent and egalitarian but to outsiders they present a united and somewhat reserved front. For some reason they are one of the most feared tribes in Ghana—perhaps because they used to have a reputation for fierce hand to hand combat coupled with the fact that they have not as yet become a part of the nation's mainstream. Most Konkombas are animists and would never think of becoming Mohammedans, as their bitter enemies, who

drove them from their original lands, follow that faith. There are some Christians, though, and our village has a little church that was started some time ago.

We have made a map of the village and desire to get to know everyone by going out on daily visits. Many people come by to greet us or to get medicine. Then, too, when work parties arrive (men building the hall and women plastering it) we circulate among them using what language we know, and helping a bit where we can. Usually we serve mugs (tin cans) of tea to them all. Lately a new way of getting to know the people has presented itself in evening story-telling sessions.

In our daily informant hour we each have an older man and a school boy to help us. Sometimes we ask for phrases or words we need to know, or get the meaning of material we have heard and written down throughout the day. In addition, we practice what we know, and perhaps have the adult tell us a story which the school boy assists in translating. Later we analyze it, trying to decide on the functions of those little words that do not translate. Occasionally I ask for songs. Before the next day we go through this material, practice it, and file as much of it as possible.

Any new language presents the difficulty of remembering the right word at the right time, and particularly so if it is a tone language where a slight difference in *pitch* can mean a totally unrelated word. Sheep and women are just such a pair of words. Imagine saying, "and when he putteth forth his own women, he goeth before them, and the women follow him for they know his voice," instead of, "and when he putteth forth his own sheep,

he goeth before them, and the sheep follow him for they know his voice," (John 10:4). One day a woman came to us for medicine and we thought she said a scorpion bit her on the nose. It seemed an astonishing thing until we found out later that the word for scorpion is also a phrase for sinus trouble!

We have been able to help the people a bit with a small-scale clinic that we have trained our house boy to run. Our most effective medicines are anti-malarial drugs, eye-drops, and dysentary mixture. We give out a lot of aspirin for all kinds of things and occasionally my partner pulls a tooth! During the wet season our boy did a lot of dressings as that seems to be the time for tropical ulcers. A mobile clinic comes regularly in the dry season to give shots and other professional help.

We have seen no snake bite cases yet, but we have seen plenty of snakes around our compound. One week we found three—one in our kitchen. The next week we killed a cobra (our technique is to have one person pin it down with the shovel while the other beats its head with a club). There are many more scorpions than snakes and we find them in all kinds of places. Once I dug into our dish box only to find a scorpion sitting right in the middle of the cup I intended to pick up. Other pests include rats and termites. We put an end to the rats by getting a cat, but the termites are an unsolved problem.

Last year during the leanest of food seasons, when the millet was finished and the yams were not yet ready, we were able to distribute some free milk, flour, and oil that the Church World Service supplied. We used this occasion as a house warming. It was a

wonderful opportunity to meet the elders (oldest man of each household) since we had just moved in. The chief assembled them outside our hall and called them in one at a time. After greeting them we wrote down their names and then our house boy (really a jack-of-all-trades) gave each their portion and their young boys carried it away.

The MU PHI EPSILON Alumnae Chapter of Spokane, Washington, was responsible for one other public service I have been able to render. The group sent 60 copies of a Christmas Carol booklet to be presented to the head teacher of the local primary school in Wapuli two miles from here. Though group singing has a real part in their school program, all the songs have been learned by rote so this was the *first* printed music the students had ever seen. I took the occasion to show them how to use the books and taught them "O Come All Ye Faithful." The head teacher was very pleased with the books. It is almost impossible to buy staff paper or music of any kind other than hymnals and a few beginning piano books here.

Getting news of the outside world can sometimes be a frustrating experience. Recently our radio went out for the third time, and then there is the usual lag of about a month's time in our mail reception. Our Post Office is 27 miles away so about every two weeks we send our boy on the overnight journey to post letters and return with what has accumulated for us. Our magazines and packages come in at Accra, so every five months we get a whole stack! The Post Office is not the only convenience that is miles away. We are two miles from a second class road, 15 miles from the nearest

white person, 27 miles from a hospital, and 90 miles from the main road and shopping center of the North, Tamale. A trip there involves a two mile walk to the road, a long wait for a "mammy lorry" to Yendi, and then a change of lorries or perhaps an overnight stop before reaching our destination. A "mammy lorry" is like a pick-up truck with rows of wooden benches set too close for comfort and a wooden roof that is too low for the bumps the truck goes over. Every lorry has a proverb painted on it, such as, "Never Despair," or "Had I Known," or "God is Love." One time we got on a lorry that had a load of kapok. Although we sat up front with the driver we were covered with fuzz and spent the ride with our eyes and mouths closed and scratching our noses.

¹ Time, Sept. 27, 1963, p. 25.

² Tait, David. *The Konkomba of Northern Ghana* (London: Oxford Univ. Press, 1961).

(To be concluded in next issue)

Gretchen Weed is a young woman of exceptional ability and enthusiasm. Her interest in music made itself known at an early age. While in high school, in Spokane, Washington, she was judged the outstanding trombonist in the Northwest, and on her graduation she was the class valedictorian. She then entered Eastern Washington College of Education, later Eastern Washington State College, as a music major, and was initiated into Epsilon Iota chapter of MU PHI EPSILON. Her trombone was still a major interest, and she commuted to Spokane regularly to perform in the Spokane Symphony. She graduated with B.A. degrees in both music and education.

(Continued on page 15)

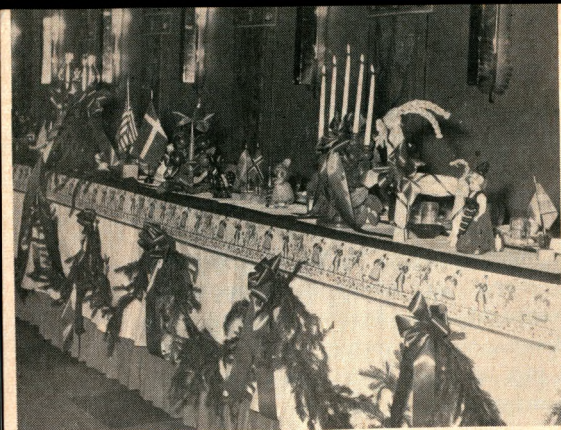
Convention Host Chapters Plan Early

Convention, for the host chapters of North Central Province, started long before August 21. There were meetings and discussions to pick the theme for their luncheon or dinner, or to plan the decoration for the table.

Sioux City powwowed over totem poles, tepees and tea as they picked the Siouxland for their theme. *Phi Zeta* and *Mu Tau* joined them in sending out the smoke signal, "Come and smoke our peace pipe with us in Friendship, Music and Harmony."

Minneapolis, *Mu Epsilon* and *Richfield* developed the Convention theme of "Stairway to the Stars" by choosing "Star of the North" for their decor. Minnesota is known as the North Star State; the state flower is the moccasin and these beautiful flowers were used in driftwood arrangements, and also made up in corsages. Star candle holders surrounded the centerpiece.

Tall-stemmed sherbet glasses filled with white violets, with everything else green, were the decorations developed by *Des Moines*. *Fargo* and *Phi Iota* drew on the Scandinavian influence in their part of the country to give them their theme, "A Step from Scandinavia in a Festive Mood." *Hildur Shaw* was Mistress of Ceremonies presenting the theme in an effective manner. *Eileen Preston* sang folk songs, and a trio, sang "Norwegian Table Prayer," original music setting by *Sylvia Moe Dyrhaug* in memory of her mother, *Carolyn Moe*, who, until early this year, was a member of *Fargo Alumnæ*.



Fargo



Hildur Shaw
of Fargo



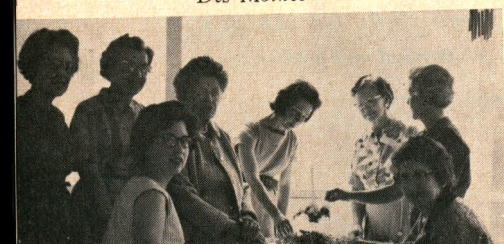
Minneapolis



Minneapolis
Mu Epsilon
Richfield



Sioux City



Des Moines

Haworth Bequest Memorial to Gail Martin Haake

by Alma E. Grambauer

Mu Phi Epsilon's School of Music at Gads Hill has been the recipient of a bequest of \$1,000 from Mrs. Blanche Haworth, who has stipulated that it be a memorial to Gail Martin Haake, founder of the School.

Mrs. Haworth was a friend of Gail Haake and taught with her over 25 years ago. The money is to be used to "pay for piano lessons for underprivileged children who would be otherwise unable to take lessons."

It was decided to offer a scholarship in open competition. There were six entries. The contest was held at Gads Hill on November 10, with MU PHI EPSILON members from Chicago as judges.

At the same time two scholarships were given to the School by two Alumnae chapters in the Chicago area: *Chicago Alumnæ* and *Evanston-North*

Shore Alumnæ. These were for \$60 each, and were given in honor of Founders Day.

The Gail Martin Haake Scholarship was won by Mary Palonis, and the two Founders Day Scholarships were won by Kenneth Gardner and Cathy Gardner.

These winners and other students from the Music School performed on the inter-chapter Concert, honoring Founders Day and 60th Anniversary of Mu Phi Epsilon. The program took place on November 24, 1963. The Chicago area chapters participating in this 14th annual Inter-Chapter Concert were: *Phi Sigma*, with Mary Sholtis, pianist; *Sigma*, with Martha Edwards, soprano; *Mu Xi*, with Diana Baskovitz, mezzo soprano; representation from *Alpha Omicron*, pianists

(Continued on page 62)

MARY PALONIS



CATHY and KENNETH GARDNER



Bach Suites Manuscripts Found By Markevitch

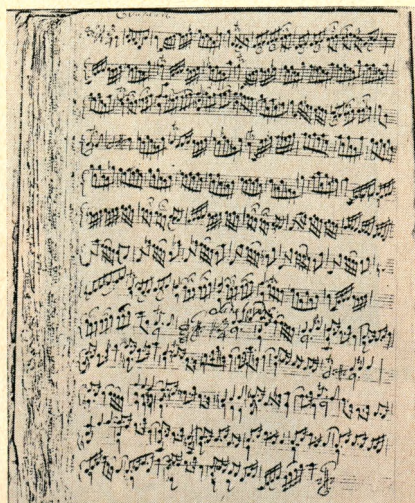
DIMITRY
MARKEVITCH



Dimitry Markevitch, 'cellist, has located two manuscripts of the *Six Bach Suites for 'Cello Solo* that have eluded musicologists for over a century. The manuscripts, written by two disciples of Bach, Kellner and Westphal, are the most accurate known versions of Bach's original composition. Only the discovery of the *Suites* written in Bach's own hand would top Markevitch's find. From these manuscripts, Markevitch has prepared an edition of the *Suites* that he will play at Carnegie Hall in October.

Markevitch located the manuscripts by an indirect route. A chance meeting with Luigi Silva, also a scholar-'cellist, provided the spark that began Markevitch's intensive search for the Kellner and Westphal Manuscripts. After what seemed more like

The Courante and Sarabande of Kellner's writing of the 4th Suite.



detective work than musicology, tracing one lead after another, Markevitch received a small box from the Marburg-Am-Lahn Library, a part of the Prussian State Library, in response to a letter. It was a microfilm of the manuscripts.

The Kellner and Westphal copies have been known to exist for well over a century. The first edition of the *Suites*, for example—by Probst, done in 1825—is based on Westphal's copy. The Bach Gesellschaft of 1879, which mentions the two manuscripts, has many elements of Kellner's version, though it is based primarily on Anna Magdalena Bach's manuscript. The copy of Kellner, a friend and follower of Bach whose manuscripts have saved for us so many of Bach's works, is 25 pages in length and, except for 64 bars of the *Fifth Suite Gigue*, is complete. The copy of Westphal, a Hamburg organist who was a student of Bach, is 42 pages long; it is extremely clear and omits nothing.

Considering the general consistency between the two manuscripts and knowing the relationship of the authors to Bach, it is very likely that Kellner and Westphal made their copies from Bach's original. Unlike Anna Magdalena's copy, which is in so many aspects unplayable, the Kellner and Westphal manuscripts are practical ones, obviously the work of very competent musicians.



Wedding Dance
Northern Luzon



Kuntao-Silat
Muslim Festival



Singkil
Muslim

The Fabulous Bayanihan

"... shimmering . . .," "... glittering . . .," "... delicate . . .," "... glamorous . . .," "... authentic. . . ." These are among the words most used by critics as they follow the sparkling footsteps of the Bayanihan across the country. The repertoire of the Company introduces the audience into a fairyland of music, color and movement that casts a spell of utter enchantment.

As all Mu Phi Epsilon members know, the music director and one of the founders is Lucrecia R. Kasilag, *Mu Upsilon*, and Dean of the College of Music and Arts of Philippine Women's College, Manila. She is also an outstanding music educator in Asia. In the Company this year were Hilda Alicer and Rosa Puertollano, *Alpha Tau* members. Hilda is a dancer and soprano soloist and Rosa is a member of the *Rondalla*, a string ensemble of Philippine instruments, all plucked. All of the dancers are university and college students from Manila.

There are no stars or star billings in Bayanihan. The Tagalog word means the ancient custom of "working together." Bayanihan is the real star of the show.

Konkombaland

(Continued from page 11)

The next four years she taught school in Chewelah, Washington, during which period she pursued graduate work in the summertime in California. It was there that she learned of the Wycliffe program which led her to

three years of graduate work which included jungle camp training in Mexico and a trip to Ghana.

She has been chosen to represent the Wycliffe translators during the summer of 1965, at their Pavilion of 2,000 Tribes at the New York World's Fair.

We are indebted to Lois Thomas Ilder, Spokane Alumnae, for her help in presenting this material.

Tribute . . .



VERNA STRAUB

"You'll like her! She's a brick!" So exclaimed a former student of Miss Verna Straub to a new member of her class in Music Theory. This same description, though not always expressed so succinctly, was given by all who have had the good fortune to know Miss Straub, now completing her sixth year as Faculty Advisor of the *Phi Omicron* Chapter at the Cleveland Institute of Music.

More than any other teacher many had known, Miss Straub has taken a genuine personal interest in each student, fellows and girls alike, treating them as individuals, as adults, and as valuable friends, maintaining a high standard of excellence in the classroom, and encouraging equally high personal goals. She is thus beloved over many years for her ability to instruct, guide, counsel and inspire.

Verna Straub is a graduate of Lake-

wood, Ohio, High School and the Cleveland Institute of Music, with degrees in Theory and Piano. She was appointed to the Institute Faculty in 1935, and was head of the undergraduate Theory Department from 1955-1964. She is a member of the Fortnightly Music Club, the *Cleveland Alumnae* Chapter of M Φ E, and was elected Faculty Advisor of *Phi Omicron* Chapter as it was organized, the installation taking place in March, 1958.

During the years since, she has served this chapter not only in sorority matters but also in personal problems, faithfully and with devotion. In the words of the present members of the chapter, "Miss Straub has certainly been a very dear person and friend to all of us, and we felt very honored in having her for our faculty advisor."

—Alice P. Jerabek

TRIANGLE is saddened to have to add that word has been received of Verna Straub's death in June, 1964.

Collegiate Tempo 1963-1964

Scholarship—Honors Chapter—Campus Performances Service

Omega Chorus



Scholarships and Honors

MU PHI—Baldwin Wallace: Playing at the *Cleveland Alumnæ* Sterling Scholarship Tea in April were: Marilyn Meier, soprano, Judith Herlevi, trombonist, and Linda Riddles, oboist. Accompanists were Shirley Anderson and Sharon Olwert. Linda was winner of the Alumnæ Scholarship. . . . *Laurels*, for outstanding junior and senior women, selected Judith Herlevi and Ellen Coleman. Lavinia Rink Pye became a member of Dayton C. Miller Gold Key Society (Dean's List for 6 quarters). Elected as officers of *Tau Beta Sigma* (band) were Joan Horine, president, and Kathy Gadus, vice-president. Jane Beckett was our own Outstanding Senior.

OMEGA—Drake U: We are proud to report that Kristi Metcalf received a Fulbright Fellowship to Germany for a year's vocal study. She is a past president of *Omega*, and a winner in 1962 and 1964 of the Des Moines Young Artists competition in the voice division.

KRISTI METCALF—Ω



EPSILON IOTA—Eastern Washington State: The activities of our members outside of chapter are many and varied. Wanda Kanzler is president of *Tau Beta Sigma* (band), and newly tapped to *Golden Circle*, Senior Women's honorary, were Mary Lee Krause and Nancy Luther. Karen Richardson and Joan Pomada were in Metropolitan Opera Auditions and Karen was in the Greater Spokane Music Festival. She was also named to the American Association of University Women and received our chapter achievement award. Judy Barton also graduated with high honors.

PHI UPSILON—Boston U: Awards were received by: Gail Fuller—Dean's List, Worcester County Young Artist Award, Dean's Recognition Dinner Award; Janet King—Awards Assembly "outstanding achievement in student teaching," Dean's List and Special Recognition, *Pi Kappa Lambda*; Rosalind Knowles—Dean's List and Theodore Presser Award; Jerrilyn Miller—Rhode Island State Scholarship covering 4 years at B.U.; Andrea Minyard—Dean's List, National Methodist Scholarship, Organ Recital, M.I.T.; Pamela Parker—Boston U. Scholarship, and one given by All Souls Church (Lowell, Mass.); Leslie Saffer—Worcester County Young Artist Award and Dean's List; Beverly St. Laurent—Trustee Scholarship from B.U.; also on Dean's List: Erica Brown, Arline Plummer, Betsy Leland and Special Recognition to Sally Morrison.

MU UPSILON—Eastman: Sandra Bush, our former president, was

named one of two recipients of the twenty-first annual McCurdy Senior Scholarship Award. The grant will be applied toward one year of advanced study at Eastman.

PHI NU—U. of California, Los Angeles: Academic honors went to Diana Conway and Mary MacDonald when they were elected to Mortar Board. *Alpha Nu Gamma*, foreign language honorary, elected to membership Diana (in Spanish), Mary (in French and Italian), and Nancy Oslin (in German).

MU NU—University Southern California: Elizabeth Anne Matesky received a Fulbright Scholarship.

EPSILON MU—Utah: Our new chapter president and vice-president, Linda Brown and Barbara Morr, were recipients this spring of our \$150 chapter scholarships. . . . At the Award Evening Suzi Anderson was presented with the \$300 Associated Women Students award, and Arnel Burris received the \$300 Z.C.M.I. Scholarship. . . . Tapped for Spurs: Loi Ann Bailey and Eileen Ellis. Selected to Cwen: LeAnn Later, Nancy Mann, and Arnel. Mortar Board tapped Jann Ellison. Winner of annual Congress of Strings Competition was Loi Ann Bailey with Mary Lindblom chosen first alternate. Our past president, Mary Anne Koller Anderson, won the Alumnæ Award. Mary Anne and Julia Bryson Clayton were elected to *Phi Kappa Phi*. . . .

EPSILON OMICRON—Indiana U: Bouquets to Bonita Bachman, recipient of 1964 M Φ E Scholarship. Bonita is a senior transfer from *Phi Zeta*, Morningside College.

EPSILON NU—West Virginia U: Mortar Board tapped Kathleen Hardy and the Sophomore honorary, Li-Toon-Awa, selected Susan Brown, Anne



KAREN ARNESON, MARJORIE LAWRENCE,
A Δ, Sacramento

Dreisinger, and Tona Renforth.

ALPHA DELTA—Sacramento State: Karen Arneson received the M Φ E Alumnæ (*Sacramento*) Scholarship at a luncheon in the Del Paso Country Club.

PHI GAMMA—Peabody: At Commencement Exercises the following members received awards: Jeanette Walters, voice, received a Certificate, a Bachelor of Music, and an Artist Diploma; Anne Dahl, violin, a Certificate; Bachelor of Music degrees were given to Patricia Ann Melcher, in composition, and in music education to Gertrude Bassford, Barbara Blake, and Barbara Ann Crum; in violin to Joanne Taylor; in voice to Patsy Jane Snow. The Master of Music degree was conferred on Jeanne Cohen, violin, and Eileen Foulk, voice, of *Baltimore*, and Carol Tarr, 'cello, of *Washington*. Margaret Knopf received a Doctor of Musical Arts degree in piano.

ALPHA IOTA—Midwestern U: At the close of spring semester, Bobbie Jean Martin was chosen for Who's Who on Midwestern campus. She is an



ROXANNE MEDLEY
SUSAN ANDERSON
ALICE ROORK
JUNKO ELLIS
BARBARA BERNHART
—A A

organ major, full-time student, teacher of piano and organ, and mother of four. We congratulate her!

ALPHA LAMBDA—Portland State: Patron scholarships were won by Luanne Clark, and Gail Williams. . . . Luanne was also on the Dean's List. . . . The Certificate of Distinction given by the Music Department was won by Gail Rosebraugh. . . . Barbara Bernhart received a scholarship from Juilliard where she will go in the fall. She is a flutist. . . . Susan Anderson, clarinetist, won first place in the woodwind division of the Portland Rose Festival Music Competition and also a Scholarship to Aspen from the Portland Junior Symphony. . . . Roxanne Medley was runner-up (2nd place) in the string category of the Rose Festival Competition.

PHI TAU—North Texas State U: Recent Awards: Presser Foundation Award—to Carol Reglin, flutist, and to Margaret Mitchell, organist. Carol also is *Phi Kappa Lambda* and Outstanding Senior Woman Music Major. Ellen Smith, pianist, is *Phi Kappa Lambda* and Outstanding Sophomore Woman Music Major.

ALPHA MU—Southwest Missouri State: We are proud to say that five of our seniors were elected to Who's Who: Connie Bilyeu, Pat Cantrell, Marilyn Whitlow, Mary Wilson, and Linda Henley. . . . Connie Bilyeu received the Lynn Farrar Award which

is voted and decided on by the Music faculty.

EPSILON PI—Texas Tech: Mortar Board tapped Barbara Sperberg, Tommie Allen, and Nan Nall. . . ; Junior Council, Vicki Pharr. Fifteen of our members received recognitions at the 18th All-College Recognition Service in March.

PHI LAMBDA—Willamette U: At the Senior Awards Chapel, Mary Sue Gellatly was given one of the 25 keys presented to seniors who have contributed most to the University during their college tenure. . . . Wendy Hunt won the first Scholarship given for Music Therapy work. It was given by our patrons.

PHI MU—San Jose State: *San Jose Alumnae* Scholarship was won by Nancy Daggett, and the *Palo Alto Alumnae* Scholarship was awarded to Jennifer Chase. . . . At the Music Department Honors Assembly these members were honored: Camilla Shelden, Nancy Daggett, Alice Ellsworth, Eunice Moore, Sharon Gilbert, Jennifer Chase, Cheryl Melott, and Carolyn Butts. . . . Symphony Auditions were won by Camilla Shelden, Joan Bridges, Karen Brandon, and Jennifer Jones. These were the only Audition winners, and all from *Phi Mu*.

KAPPA—Jordan College of Music, Butler: Lenore Colin and Judy Brown are *Phi Kappa Phi*.

EPSILON TAU—Washington U., St. Louis: We are proud to announce the following honors: Nyla Grosse: Chimes, national Junior Women's honorary and \$550 Music Scholarship from the University. . . . Leah Littlefield: Mortar Board, Dean's Honor List and Presser Foundation and University \$1,000 Scholarship. . . . Marie Ann Heiberg: Full Graduate Tuition Remission and Elliot Honors Assembly. . . . Christina Mordhorst: Full Tuition Scholarship, Washington U. . . . and Carole Godwin: Soloist with St. Louis Philharmonic Orchestra and St. Louis Symphony; presented in Reviewed Recital by Artists Presentation Society, St. Louis; sang roles of Cherubino, St. Louis Grand Opera Guild production of *Figaro*, Elizabeth Procter in *The Crucible*.

NU—U. of Oregon: Carla Garrison graduated *Phi Beta Kappa*. . . . Carol Ferguson received the Senior Achievement Award. . . . Sandra Olson, JoAnn Briggs, and Vicki King won the Patron Scholarships.

ALPHA ETA—American U: We have been quite active in competition and performances in and around Washington, D.C. area. Virginia Marks, pianist, was awarded the *Washington Alumnae* Scholarship Award, and also was regional winner of the National Federation of Music Clubs competition. . . .

PHI OMICRON—Cleveland Insti-



NANCY HAZELTON—Φ O

tute of Music: Nancy Hazelton was the recipient of the \$50 Alumni Achievement Award of 1964, for her superior performance of *Milbaud Sonata #2 for viola and piano*. Nancy has also been awarded the \$500 scholarship from the Three Arts Scholarship Fund. She has appeared on many programs in Cleveland and is a teacher of viola and violin. She is also principal violist in the C.I.M. Orchestra.

EPSILON DELTA—Lewis and Clark: Ann Haworth was elected to Quesitor, a Senior Honor Society, and graduated *summa cum laude*. She will spend the next year in Vienna, studying violin. She has been playing in the violin section of the Portland Symphony Orchestra.

EPSILON PI—Texas Tech: At the AWS Banquet in April, the following received scholarships and awards: scholarships by Barbara Short, Barbara Sperberg and Lola Page; awards were won by Lola, *Delta Gamma* award, Barbara Sperberg, *Phi Mu* award, and Tommie Allen, *Sigma Kappa* award. Tommie also got the City Panhellenic scholarship for arts and sciences.

VIRGINIA MARKS—A H



Performances

ALPHA GAMMA—U. of Southern Mississippi: In January, several of our members had the marvelous experience of singing under the baton of Warner Torkanowsky with the University Singers and the New Orleans Symphony in a joint performance of Ravel's *L'Enfant et Les Sortilèges*. Three solo parts were sung by **Memrie Johnson** and **Diane Roshto** and the daughter of our chapter adviser, **Elaine Avery**. The opera was sung in French and our French coach was none other than our patron, Mr. Thomas Chisholm. . . . A special recital was given in April which included **Jenny Bryant**, piano; **Nancy Osborne**, French horn; and a choral work by all M Φ E members.

OMEGA—Drake: We observed Founders Day by presenting our annual fall recital on November 13. In honor of the date, a large violet drape with the crest on it was hung on stage. The *Omega* Chorus sang a group of numbers, led by **Betty Borgeson**, chorister, and accompanied by **Marilyn Jeffers**. They are pictured on page 17.

EPSILON MU—Utah: Lynn Sanders sang the role of one of the lovers in the University production of *Gianni Schicchi*. . . . This year we varied our usual American Composers Concert to the extent that we featured the compositions of our own Utah composers, and specifically faculty or students at the University. All the composers were men, and one, Mr. Ralph Sheffield, dedicated his two numbers *Spring Grass* and *Peace, Night, Sleep* to MU PHI EPSILON for this occasion.

ALPHA IOTA—Midwestern U: Late in January, our University Choir went

on tour to Monterrey, Mexico, where we gave six performances in three days in conjunction with the Mexican Northamerican Institute of Cultural Relations. The Choir was assisted by **Suzanne Lofton**, pianist, and **Jo Lynn Waller**, soprano, accompanied by **Georganna Fitzgerald**. We appreciated so much the Mexican hospitality. . . . During the Festival of Contemporary Arts held in March, Mr. Vincent Persichetti, eminent composer, spent several days at Midwestern as a guest lecturer. Two recitals of Contemporary Piano Music For Children were scheduled at this time. Pianists participating in them were **Carol Aboussie**, **Jo Lynn Waller**, **Georganna Fitzgerald**, **Jeanine Griggs** and **Janette Wineinger**. . . . The Choir gave a concert during the annual Fine Arts Festival. In May the Choir journeyed to Pasadena and Bay City, Tex.

NU—Oregon: Margaret Gates was chosen to compete in the Metropolitan Opera Northwest Regional Auditions in February. The only other woman chosen to compete from Oregon was **Martha Hill**, a *Nu* alumna, who placed second. . . . Two operas given this year were *The Consul* and *Dido and Aneneas*. The women's roles were almost exclusively held by *Nu* members. **Carol Stewart** and **Sandra Olsen** had leading roles.

MU UPSILON—Eastman: On February 27 and 28, the Eastman School Opera Theater presented Rossini's comic opera *L'Italiana in Algeri*. **Elsie Siebert** played Isabella; **Barbara Ross** and **Sandra Bush** shared the role of Zulma; **Linda Ascationo**, **Judith Caldwell**, **Linda Cowles** and **Cassandra Havens** were in the ensemble. . . . **Ann Rishell** gave two recitals this year, a piano recital and double bass recital.

PHI MU—San Jose State: In the Opera Workshop presentation of *Sister Angelica* and *Gianni Schicchi*, **Jennifer Chase**, **Sharon Gilbert**, and **Maureen Schino** were featured in the former, while **Hollie Geller**, **Sue Hinshaw**, and **Donna Lauer** sang in the comic opera. **Sharon Gilbert**, vocalist, shared the spotlight with **Nancy Dagggett**, pianist, in the college Symphony's season concert. **Nancy** was featured in Chopin's *Concerto No. 2 in F minor, Op. 21*, while **Sharon** sang selections from Puccini, Massenet, and Wagner. **Nancy**, a past president, was also accepted to study with Mme. Lhevinne at Aspen, Colorado, during the summer after she graduated with distinction in June.

PHI IOTA—Concordia: We combined with the *Fargo-Moorhead Alumnae* chapter to give the annual American Music program. Numbers by Persichetti, Roy Harris and Menotti were given as well as several compositions by Concordia students.

MU RHO—U. of Denver: Master Classes were presented by the celebrated **Grant Johannesen** last February at our Lamont School of Music. *Mu Rho* girls performing in his classes were: **Paulette Haupt**, **Cheryl Benjamin**, **Susan Finch**, and **Kathryn Runnalls**.

ALPHA NU—West Texas State: We completed our year by participating in the City Arts Festival in which some of us played in a recorder group led by our adviser, **Ilah Dixon**.

ALPHA LAMBDA—Portland State: **Mary Alvarez** gave a half hour demonstration of Flamenco dancing on a recent TV (educational) program. . . . The second annual Peter Britt Festival in Jacksonville will have performing: **Katherine Fischer**, pianist, **Gail Rosebraugh**, violist, and **Vicki Poulette**, flutist. **Vicki** is now attending Oberlin on scholarship. . . . **Gail Williams** sang at the Inter-Collegiate Winter Carnival, representing Portland State. . . . In the Music Department's annual solo concert for P.S.C.'s most promising musicians, **Kathy Fischer** played Beethoven's *Emperor Concerto*, and **Donna Bennet** sang the *Jewel Song* from *Faust*. . . . On a musical tour through the U.S., Nassau and the Bahamas is **Alice Roorck**, singing in a choir called the "Continental"; it is a choir sponsored by Youth For Christ. They will give approximately 70 concerts in 70 days. . . . **Donna Bennet** played the role of the second lady in *Magic Flute* produced by Theater Arts Opera Company. . . .

GAIL ROSEBRAUGH—A A

PAULETTE HAUPT, SUSAN FINCH, KATHRYN RUNNALLS, CHERYL BENJAMIN with GRANT JOHANNESSEN—M P.





LINDA NAGER—E Ψ

MU PHI—Baldwin-Wallace: The opera, *Susannah*, by Carlisle Floyd, performed on March 6 and 7, included Rebecca Cotterill, Janelle Cole and Pam Curry in the Chorus; Joan Horine, Deidre Haag, Jane Beckett and Linda Baurer were in the orchestra. Helen Hodil was in charge of costumes. Helen was also in the play, "House of Bernarda Alba." . . . The 32nd Annual Bach Festival in May included: Bonnie Adams, Rebecca Cotterill, Sylvia Curl, Judith Herveili, Marilyn Meier, Lavinia Pye, Barbara Lukes, and Barbara Preamble in the Festival Chorus. In the Festival Orchestra were Linda Baurer, Deidre Haag, Joan Horine, Lynn Bowen and Linda Riddles. Rebecca, Sylvia, Kathy Gadus, Barbara Howe, Pam Pyles, Bonnie Beth Blank, Barbara Blau-man, Janelle Cole, Pam Curry, Charlotte Koch, and Etta Lyons sang in the College Choir. Judith and Kathy were in the Brass Choir. . . . Sharon Olwert was one of three pianists to play with Peter Nero on the TV Peter Nero Hour. They played a 4-piano arrangement of *The Ritual Fire Dance*.

MU BETA—Washington State U: Linda McClellan and Sandy Walberg gave a program for the *Phi Kappa Phi* meeting.

EPSILON PSI—Juilliard: We had a very active concert season with at least fifteen members performing in recitals and concerts at Juilliard, in the Metropolitan area, and throughout the country. Our president, Linda Nager, performed piano recitals at the Toledo Museum of Art and at Michigan State University, as part of their Kellogg Center Series. She also appeared with the Allen Park Symphony Orchestra in Rachmaninoff's *Rhapsody On a Theme of Paganini*. . . . Another outstanding artist was Jamesetta Holliman who played at New York City's Town Hall as a winner of the Concert Artists Guild competitions. She was also a winner of the Hour of Music, Inc. Club. Two other members, Anne Fisher, and Frances Riley, appeared on a color TV program at the World's Fair RCA Exhibit, presented by the *New York Alumnae* chapter. A large audience viewed the performance and tapes will be used on closed circuit TV on many RCA outlets at the Fair.

EPSILON NU—West Virginia U: We were proud to claim all five of the girls on the program of the annual Young Artists Concert held in April. Those performing were: Nancy Fox, soprano; Kathleen Hardy, flutist; Sylvia Hare, soprano; Suzie Kidd, pianist; and Alice Manning, cellist. A reception was held after the concert.

PHI NU—U. California, Los Angeles: Lois Varga had roles in *Traviata* and the *Magic Flute* with the Los Angeles Opera Company. Pauline Law, who was on a concert tour in Germany this spring, will sing her fourth season at the Bach Festival at Carmel.

TAU—U. Washington: Our Mothers

Day Concert was given jointly with *Phi Mu Alpha Sinfonia*.

ALPHA PHI—Maryhurst: Carol Schnell and Judy Hood, violinists, recently played for the Derthick Club, and were accompanied by Sister Anne Cecile, who had made the arrangement of the Mozart *Rondo in G* especially for them. Both the arrangement and the performance were brilliant.

PHI KAPPA—Wayne State: Sharon Burmaster and Linda Newcomb were soloists for Beethoven's *Mass in C Major*, given in March. A music critic wrote, "The combination of their voices in a quartet in a portion of the *Credo* was one of the outstanding moments of the performance."

ALPHA PI—Southwest Texas State: Members of this chapter took part in San Antonio's Grand Opera Festival last March. One highlight was singing with Dorothy Kirsten in *Love of Three Kings*.

PHI—Mt. Union: On May 16, *Phi* chapter presented a recital of wedding music. This was a "different" kind of program, but one highly appropriate to the season. A narration was interspersed between numbers giving the criteria for selecting correct music and reasons why certain numbers are not suitable. A sample of a printed wedding service was furnished and the selections given included *Be Thou With Them*, by J. S. Bach, *Processional on O Perfect Love* by Clokey, *Aria in Classic Style for Harp and Organ* by Marcel Grandjany, and *Psalm XIX* by Marcello. Our faithful patron, Mrs. Thelma Pearsol, gave the reception following the program.

EPSILON OMICRON—Indiana U: Caren Goodin represented us at the Indiana Federation of Music Clubs state convention, playing music by Ravel.



JUDY HOOD, SISTER M. ANNE CECILE, CAROL SCHNELL—A Φ.

EPSILON LAMBDA—Eastern Michigan U: Joan Bosca was one of the stars on the program at the Italian Festival and Outdoor Fair. . . .

In November, our fall concert was highlighted by the first public performance of *Four Short Tone-Row Pieces* by our advisee, Dorothy James.

ALPHA ETA—American U: A new concert series was started in January by this chapter. In an attempt to familiarize students with MU PHI EPSILON and its members, a musical program was presented at the Clendenon Theater. Sara Bostwick opened the program with a beautiful reading of her own work followed by Helen Shehan, pianist; Elsa Zipp and Martha Langston, flutists; Betty Dove, guitarist; Yvonne Sabine, soprano; and Virginia Marks, pianist.

ALPHA PI MEMBERS WITH DOROTHY KIRSTEN.



Chapter and Campus

92 Alpha Chi Welcome

The ninety-second collegiate chapter of MU PHI EPSILON, Alpha Chi, was installed on the campus of Southwestern College, Winfield, Kansas, on March 8, 1964. The installing officer was Janet A. Wilkie, National President, of Hyattsville, Md., She was assisted by Lois Ayres Gordon, Collegiate Advisor and South Central Province Governor, Virginia Porter Fiser, National Executive Secretary-Treasurer, both of Wichita, Kansas, and Mariette Simpson, Director of District #12, Emporia, Kansas.

Rachel York was installed as president of the new chapter for which Marie Burdette, member of the Southwestern College Fine Arts Faculty, is adviser. Dr. W. B. Wooldrige, Chairman of the Music Department, was installed as one of the patrons for this new chapter.

Participating in the ceremonies were members of the MU PHI EPSILON Alumnae chapter of Wichita, Xi at the University of Kansas, Epsilon Phi at Friends University, Wichita, and Phi Pi at the University of Wichita.

ALPHA CHI—Southwestern College: Ground-breaking ceremonies for the new Fine Arts Building on our campus were held early this spring. Our chapter was represented by our president, Rachel York.

EPSILON PI—Texas Tech College:

The annual interfraternity sing-song, sponsored by *Phi Mu Alpha-Sinfonia*, was held April 30. Nine sororities and four fraternities competed. At the close of the program MU PHI EPSILON and *Phi Mu Alpha* presented selections from *Camelot* assisted by a combo. The girls wore their matching dresses, and the boys all wore their blazers. The total picture was successful both musically and visually. . . . **Barbara Sperberg** is president of Doak Hall and **Tommie Allen** is chairman of Presidents Hostesses. . . . Tommie, our president, and **Janis Carthel**, Alumnae Secretary, were M Φ E delegates to the Board of Student Organizations retreat February 28-29 in Santa Fe. They took part in discussion groups on student leadership and campus problems. At Sunday worship service Tommie gave an inspiring devotional, assisted by Janis, vocalist, and **Vicki Pharr**, pianist.

ALPHA GAMMA—University of Southern Mississippi: In cooperation with *Sinfonia*, we sold drinks at the USM music department production of the *Magic Flute* to provide funds for a campus-wide coffee and conversations with the guest artists Basil Rathbone, here for our Shakespeare Festival, and Bernhard Heiden, here for the Composers' Forum. . . . We had seven graduating this year, but we had initiated thirteen so we came out all right in member strength.

NU—U. Oregon: In May, MU PHI EPSILON and *Phi Beta* gave a joint reception for Mrs. Exine Bailey, of the music faculty, following her spring vocal recital. . . . Our Girls of the Month, **Bev Maddy** and **Margaret Gates** (for April), each wore the honor pin for one month. The pin was given to the chapter by the family of a deceased Mu Phi.

ALPHA LAMBDA—Portland State: The Founders Day Dessert and program was held on our campus with three collegiate chapters in the city (*Epsilon Delta*, *Alpha Lambda* and *Alpha Phi*), *Portland Alumnae* and some from *Epsilon Theta* (in McMinnville) all participating. We celebrated on November 19 which is also our chapter birth date.



RUTH ANNE BECKLEY—A A

TAU—U. of Washington: A Parisian rush party this spring proved very successful. Members were in French costume and entertained the guests with a Parisian song. This type of party makes getting acquainted fun and easy.

ALPHA MU—Southwest Missouri State: At the end of the year we had our annual banquet with *Phi Mu Alpha Sinfonia*, and there we announced that **Linda Henley** was our outstanding senior, and **Brian Elhard** was our Mr. Music. Linda was also chosen by *Phi Mu Alpha* to be their sweetheart.

MU UPSILON—Eastman: **Joanne Richards** was elected New York State student president of the MENC.

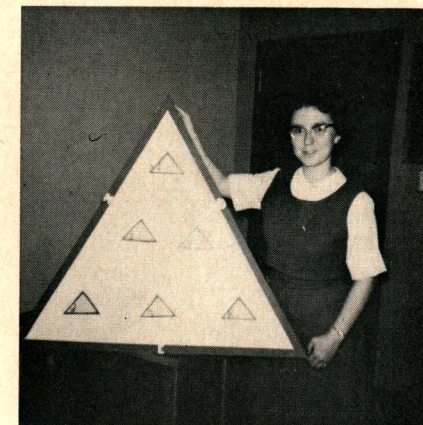
MU BETA—Washington State U:

"Music in Spaceville" was the theme for the first party of the year, given by *Mu Beta* with *Phi Mu Alpha* and MENC. Our guests were new and old music majors and faculty. Our main entertainment was a take-off written by Max McKee on the John Gage piece for twelve radios. The faculty members ran the phonograph, transistors, and radios.

EPSILON MU—Utah: Three of our new officers for this year are regular members of the Utah Symphony: president **Linda Brown**, violinist, warden **Kathy Tadjji**, violist, and chaplain **Camille Lamoreaux**, harpist.

EPSILON LAMBDA—Eastern Michigan U: During spring Orientation Week, we again set up an exhibit of our scrapbook and other materials. We were ranked second among the sororities on campus for our fine display. We have been proud to exhibit this year our new triangular-shaped bulletin board made by **Kay Marie Hill**. The border is painted purple with lettering in white. The board hangs in the main hall of the music building.

KAY MARIE HILL—E A



EPSILON PSI—Juilliard: Highlight of this year was the installation of Dr. Peter Mennin, President of Juilliard School of Music, as a patron of MU PHI EPSILON. The ceremony was held in the faculty lounge and a reception for Dr. Mennin followed. He graciously answered questions regarding his plans for Juilliard when it moves to



LINDA NAGER with DR. PETER MENNIN

Lincoln Center. . . . We are looking forward to sponsoring a special M Φ E concert at Juilliard next year, and it is our hope to have one of our distinguished alumnae back as guest artist. . . . We continued our cultural exchange program with Columbia U by presenting a series of concerts at Woolman Auditorium of Columbia.

MU RHO—U. of Denver: Kathy Knight was chosen as May Day Queen and this gave her the added distinction

of being the representative of the school in the Miss Colorado contest.

EPSILON NU—West Virginia U: Our busy year started with a German Root Beer Party for the freshmen. Members were in costume, and all had a lot of fun. Later in September, at a formal reception, the freshmen learned the meaning and purposes of MU PHI EPSILON, and the projects and activities of the local chapter. . . . Following our May initiation ceremonies our patrons held a buffet supper for us at the home of Mrs. Clifford Brown. The initiates presented a skit and we gave a program for the patrons. . . . At the Hawaiian party honoring the graduating seniors, later in May, each girl received a lei and the chapter's best wishes for a successful career. **Karen McFarland** was presented with the award for being the most outstanding senior.

KAPPA—Jordan College of Music, Butler: Following the banquet that was held in February after spring pledging, we presented Mr. and Mrs. Fred Koehn with a gift of appreciation. Mrs. Koehn is our chapter adviser and Mr. Koehn is a *Phi Mu Alpha*. He has done much to help our chapter. . . . Our pledges raised \$60 selling chocolate bars as their pledge project.

PHI KAPPA—Wayne State: We sponsored a highly successful jazz lecture and concert last January.

OMEGA—Drake U: Our president, **Merrily Watkins**, won the "Miss Des Moines" contest.

MERRILY WATKINS—Ω
"Miss Des Moines"



Service

ALPHA GAMMA—U. of Southern Mississippi: Our most outstanding money-making project was a recital given by Susan Walters, 11-year old pianist from Hattiesburg who has been recently granted a scholarship from Curtis Institute of Music.

TAU—U. of Washington: Many successful events combined to make this past year an outstanding one for *Tau* Chapter at the University of Washington. One of the most successful activities is our monthly visit to Fir Crest, an institution for the mentally ill. Here the members of *Tau* Chapter present an enjoyable musical program which often ends with singing, thus including all the patients. . . . Our most successful event was the pledge money raising project this spring quarter. Our pledges organized a week-long cookie sale on the main floor of the music building, with all members participating in the selling. This project was very remunerative and unified not only the pledge class but the whole chapter.

KAPPA—Butler: This year we made a trip to the Indianapolis School for the Blind with an hour's program. . . . We ushered at the Alumnae chapter's Spring Chamber Music Festival.

EPSILON PI—Texas Tech: On Sunday, April 19, we presented one of our most successful programs, a wedding clinic, "Wedding Music for your Selection." More than 300 people crowded into St. Paul's Episcopal Church. The pre-nuptial recital consisted of organ and vocal solos and vocal duets. A mock wedding ceremony followed with the wedding party dressed in traditional form. The bride and groom were, appropriately enough, Mr. and Mrs. Randall McGee. *Phi Mu*

Alpha Sinfonia members acted as groomsmen and ushers. The ceremony was followed by a reception with wedding cake and punch and a string quartet. All of the chapter members wore identical blue dresses (which were also worn for sing-song). **Tommie Allen**, our president, was the narrator, assisted by **Barbara Sperling**. The local paper's comment had this to say, "The young women are to be commended upon their efforts to present such a clinic as a service to the community."

NU—Oregon: For a music therapy project the girls have been working at the Pearl Buck School for Mentally Retarded Children. . . . In January Nu chapter made \$50 selling coffee and doughnuts at the MENC Convention. . . . We have been ushering at concerts all year. . . . We earned \$19 washing cars on May 2. \$10 was donated to the Memorial Foundation.

MU BETA—Washington State U: To raise money for the two one-hundred-dollar scholarships we give to upperclass music majors for girls and the fifty-dollar scholarship we give to a freshman music major, we gave a Tasting Bee. The alumnae and patrons helped us put this on. **Sandy Walberg**, **Sharon Mills**, and **Linda McClellan** gave the program. From this money we have started a fund for a gift for our music building now being built.

EPSILON LAMBDA—Eastern Michigan U: This year our chapter has undertaken three new projects. One is our Rackham project, reported by **Sandra Schultz**, another is ushering at all the music events put on by the Music Department, and a third is promoting a candy sale. The proceeds from this will go to our Scholarship Fund and for music to be sent to the Silliman University in the Philippines.

Rackham

The hour is 12:30, the place, the Rackham School of special education at Eastern Michigan University. An audience of children, some who cannot talk, others who cannot move their feet and hands, others who hold their bodies limply, are all waiting patiently for the arrival of **Wilbie Lester**, a senior in the music department who is chairman of a special project sponsored by *Epsilon Lambda* chapter, MU PHI EPSILON, International Music Sorority.

They remember the songs they had been taught previously and the piano solos by various musicians along with numerous other things such as learning about the drums, flute, trumpet, oboe, English horn, bassoon and trombone. Yes, even the lovely solos sung by members of the sorority and other members of the music department.

Today they are going to learn more about string instruments, for this week they will attend the Children's Concert given by the University orchestra. Through the programs held twice a month by MU PHI EPSILON they will understand better how each instrument is played and the sounds each one is capable of making.

We of *Epsilon Lambda* are very proud of the program that has been started here. It has not only widened the musical background of these unfortunate children, but it has also disclosed potentialities of some children that were not noticed before. For this reason, starting September, 1964, the program will be expanded.

—Sandra Shultz
Epsilon Lambda

ALPHA NU—West Texas State: A Benefit Concert was given by chapter members in April for our Kathryn Hines Scholarship Fund. Nine girls performed in piano, vocal and instrumental numbers. . . . Three days later we sponsored a Wigs and Wiglets demonstration for the public for the benefit of our Fund.

PHI CHI—Fresno State: Music Therapy, planned with the co-operation of the Fresno Juvenile Hall is on the agenda. Proven to have been very successful and rewarding in the past, we hope to do an even better job this

year. For this program three of our members go to the Hall each Thursday—alternating each week so that each has the opportunity to participate. For 45 minutes they present a program of community singing, music appreciation, and the introduction of a musical instrument.

EPSILON NU—West Virginia U: During the Lenten season, the chapter sang hymns at various hospitals around Morgantown. . . . As a service project, our new members cleaned and organized the opera workshop's costume room.

CONVENTION COVERAGE DECEMBER ISSUE

PHI OMICRON—Cleveland Institute of Music: A special poster was made showing Gads Hill pictures, and this was displayed at our Annual Spring Concert on May 25. The concert presented our thirteen graduating seniors in a program that included piano, flute, harp, voice and trumpet. We asked for contributions toward the support of this oldest of M Φ E philanthropies. The poster featured a black-sprayed design, and the red lettering on the white background was eye-catching. Consequently, many people stopped to look at the other Gads Hill material surrounding the poster. The display included the weekly schedule at the School, programs given by the Gads Hill students, pictures of them, programs of the interchapter concerts given there by the Chicago Area M Φ E chapters. The donations will be sent to the Gads Hill national project.

Φ O: GADS HILL POSTER.



MU UPSILON—Eastman: The sorority, being interested in Music Therapy, has presented several programs along with Alumnae chapter members under the direction of **Dr. Gertrude Miller**. The Presbyterian Home and St. John's Home for the Aging and the Rochester State Hospital were a few of the places visited. **Ellen Nivert** and **Althea Speelman** helped to organize these programs. **Nancy Howe** played the flute and **Mary Brigid Callan** accompanied **Sandra Bush** and **Barbara Ross** on the Irish harp while they sang old English airs.

ALPHA IOTA—Midwestern U: Our spring pledges surprised us with an evening of entertainment at the home of **Jeanine Griggs** at which time they announced their collection of pounds and pounds of music they had packed and mailed to the Philippines. . . . During the annual High School Choir Festival held at Midwestern, our pledges sold hot cocoa and cookies. . . . Before Christmas, we spent a gratifying afternoon directing a music program at the State Hospital for some 150 patients. Refreshments were served which the Alumnae members graciously furnished.

MU PHI—Baldwin-Wallace: On May 26, we assisted at the dedication of the new organ at the Lindsey-Crossman Memorial Chapel, and throughout the year ushered for the Great Artist Series.

EPSILON PSI—Juilliard: The concerts at the various homes for the aged in New York City were continued and expanded to include a concert by the newly pledged members. These concerts became a source of added income for the chapter.

EPSILON OMICRON—Indiana: We cleared \$70 profit from a candy sale project.

1965 MU PHI EPSILON

European Music Tour

SHARE with other Mu Phis and friends in this especially-planned tour which will include the **BEST** in travel, the **BEST** in music, the **BEST** in leadership. You will visit: Portugal—Spain—Principality of Monaco—Italy—Austria—Germany—France—England

You will thrill to these special events:

Lisbon—the "Fado"

Madrid—Attend "Zambra" (typical gypsy dances)

Granada—Attend Festival of Music and Dance

Siena—Visit Chigi Academy of Music

Rome—Opera at Baths of Caracalla

Spoletto—Festival of Two Worlds

Venice—Evening Gondola Serenade

Vienna—Operetta

Salzburg—Festival of Music and Famous Marionettes

Bayreuth—Wagner Festival

Coblenz—Operetta on the Rhine

Paris—Folies Bergere

London—Royal Albert Hall Concert

Stratford-on-Avon—Shakespearean Play

Conducted by our own FRANCES ROBINSON (14th European Tour)

Travel arrangements by Katherine White (MΦE Travel Agent)

Summer 1965 . . .

Full information and brochure will be sent by writing to

Katherine White

Vagabond Cruises and Travel Service

Suite 206 Logan Bldg., 500 Union St.

Seattle, Washington 98101

THINKING OF VACATION FOR 1965?

THINK BIG

THINK EUROPE

Alumnae

Tempo

1963-1964

Creativity Service Leadership



**70
Alumnae
Chapters
Welcome
New
Members**

Gloria Wane, president of *Portland Alumnae* chapter, welcomes 1964 graduates: Anita DuBravac, AΦ-Marylhurst, Julane Rodgers and Patti McQuade, EΔ-Lewis and Clark.

Riverside Becomes 70th Alumnae Chapter

Bringing the total to 70, the Riverside (California) Alumnae chapter was installed on April 8, 1964, by Dr. Margarette Walker, former National President of Mu Phi Epsilon. The installation was held at the home of Beth Landis, and assisting in the ceremonies were Sue Campbell, District Director, Ann Stout, Vice-President of Fullerton Alumnae chapter, and Sandra Patton, member of San Diego Alumnae chapter.

Officers installed were: president, Sylvia Shepherd; vice-president, Betty

Bown; recording secretary, Peggy McClellen; corresponding secretary, Joanne Clarke; chaplain and warden, Shirley Stover; historian, Bernice Richmond; and treasurer, Gladys Uhl.

A program was given by Phyllis Cavellin, contralto, Sylvia Shepherd, pianist, and Joanne Clarke, soprano. Guests included Adella Vyskocil, Fullerton Alumnae, and sister of Edna Mae Sila, National Third Vice-President and Alumnae Adviser, and Grace Holden from the Pasadena chapter.



Front row, left to right: Gladys Uhl, Wilhemina Peterson.

Second row: Peggy McClellen, Dr. Margarette Walker, Sylvia Shepherd, Bernice Richmond.

Third row: Joanne Clarke, Shirley Stover, Beth Landis, Phyllis Cavellin.

*watch for
Convention Issue in December*

Cincinnati Alumnae

Golden Anniversary

The Cincinnati Alumnae Chapter celebrated its fiftieth birthday on April 16, 1964, at the home of Virginia Wheeler Strubbe, with Doris Mohlie Borsch and Ruth Painter Bader as assistant hostesses.

The program and skit had been planned and written by Emma Coleman Strubbe, Past National Historian, based on the original minutes of Alpha chapter and the Cincinnati Alumnae chapter. The Alpha chapter minutes has been given to Emma by Alma Sterling Findlay* many years ago for safe-keeping. Recently Lillian Schaefer Simmons, a plus-fifty-year member of Alpha, turned over the original minutes to Cincinnati Alumnae chapter to Emma and with this wealth of material for reference an entertaining and amusing skit was planned and written by Emma for the program on the birthday.

The program followed the form used in 1914. The old secret ceremonies were used and roll call was answered with quotations from Shakespeare. Those who had been early members of Alpha provided the musical program, singing and playing solos and duets of the 1914 period. Bertha Krehbiel, Alma Massman Geiser, Elizabeth Sterling Pierle*, Katherine Sterling Maisch, Clara Wilhelmy Youmans and Emma Coleman Strubbe were the (at times) hilarious performers.

The hostesses wore costumes of the period—black velvet neckbands with

cameo locket, white shirtwaists, ankle length skirts and fancy aprons. The menu was copied exactly from one served back in the early days. The main dish was a concoction made of kidney beans and cheese, which was served on crackers because there was no easy way to make toast in the chapter room of 1914. The main dish was easily prepared in chafing dishes.

A huge birthday cake decorated with violets and music notes and thirteen candles was the centerpiece at the dining room table where the fifty-year-members and past national officers were seated. Bouquets of violets decorated the smaller tables. The hostess committee carried out the 1914 theme down to the most minute detail in the table appointments. Heavy monogram damask table cloths and monogrammed napkins were borrowed from the Mu Phi brides of yesteryear. Ginnie Strubbe used her grandmother's old Haviland china which is decorated with violets. Clara Youmans provided handpainted china for the remaining service. Only old flat silver was used (borrowed from the fifty-year-members) and only Mu Phi Epsilon sterling spoons.

Thirty members were present and it would be difficult to say which generation enjoyed it more—the fifty-year-members or the ten-year members.

* Niece of Dr. Winthrop Sterling.

Creativity

meetings

chapter programs

ALBUQUERQUE: Our year's programs were planned as the "Log of the U.S.S. Mu Phi Epsilon." Included were: a Bon Voyage Party, Italia Night, Accent on France, Christmas Music of Mexico, Musique Internationale (joint program with Sigma Alpha Iota Alumnæ), Music of Israel, Folk Music of Ireland, British Music from the 16th to the 20th Centuries, and American Hootenanny.

BALTIMORE: On May 26 we were fortunate in having National President **Janet A. Wilkie** present for a delightful reception given in her honor by the *Phi Gamma* and *Baltimore Alumnæ* chapters. This was held in the Peabody Institute Library following an exhibition concert of the Peabody Orchestra. Dean Ray Robinson of the Peabody, Mr. and Mrs. **Richard Wilkie**, Mr. and Mrs. **W. Arthur Ross** (Vera is District Director), and **Virginia Lee Stiegler** (president of *Baltimore Alumnæ*) were in the receiving line. It was a pleasure to have Mr. and Mrs. **James E. Faust** (Lola is president of *Washington Alumnæ*) present also.

EVANSTON-NORTH SHORE: For a number of years we have met for our first meeting in the fall at the

home of former National President **Elizabeth Kidd**, each member privileged to bring a guest for the program. Elizabeth, who is a well-known ethnomusicologist, presented the program which informed us of her most recent travels and research. This year the theme was "Around the World" and Elizabeth played many of the primitive instruments she had collected and sang some of the native songs. She also played some of the "on the scene" tapes of native songs. Later we were invited to look at her large collection of instruments on display.

PALO ALTO: Our February program featured flutist **Delsie Finch**, and vocal duets were sung by **Nadine** and **Dale Flinders**. This was a change of pace programming in departing from our theme for the year, piano. In May, **Mary Lee Shepard** gave a piano program of Schumann and Mendelssohn . . . **Marjorie Sherman** hosted in her beautiful Los Altos Hills home the annual pot luck dinner culminating this chapter's busy year. Parodies and community singing, led by **Joan Lomax**, entertained all who were present.

ANN ARBOR: We gave a joint musicale with Sigma Alpha Iota alumnæ in February and representing MU PHI EPSILON were: **Carol Kenney**, piano; **Geraldine Preston**, violin; **Carolyn Austin**, soprano; **Glennis Stout** and **Marie Clark**, flute (in a flute quartette); and, in a combined ΜΦΕ-ΣΑΙ choral ensemble, **Carolyn, Jane Blanchard, Marie, Cynthia Dybdahl, Lisbeth Johnson**, and **Marjorie Leach**. The chorus was directed by **Emily Lowe** and accompanied by **Anne Emley**. Carol's piano number was written by **Elizabeth Davies Gould** who was

winner in our recent Composition Contest. We feel especially close to Elizabeth as she is a former *Gamma* member. . . . **Anne Emley's** harp solo (accompanist, **Jane Blanchard**) and the organ-piano duo, **Elaine Jacobson** and **Carol Kenney**, gave us an unusual and delightful program in March. **Sarah Kilgour's** home with an organ and a piano made this happily possible. . . . **Marjorie Leach** and **Lisbeth Johnson** performed two-piano numbers at our meeting in April, and the chorus sang, with **Patricia Parker** and **Janice Clark**, duo-pianists, as accompanists. . . . Our reunion luncheon was held in May at the Michigan League when Dr. Joseph Maddy talked about "New Dimensions in Music Education." The development of the Interlochen Arts Academy as an outgrowth of the National Music Camp at Interlochen was incorporated into his interesting talk.

STOCKTON: Two potluck "get-togethers" with *Mu Eta* were part of this year's activities. Our association with the collegiate chapter is made closer by these informal affairs.

SEATTLE: At our March meeting we heard Verne Sugamele, flutist, accompanied by **Waneta Caldwell**, and **Dorothy McFadden**, pianist. Present as guests were Verne's two sisters, **Joyce** and **Phyllis**, and mother, all *Mu Phis*! In April over 50 members attended the last meeting of the year despite the fact it was the next night following our last Artists Series concert. We were rewarded with a delightful program by a trio, **Jeanne**, flute, and **Edward Hansen**, organ, and **Peggy Bardarson**, 'cello, playing *Trio Sonata in G Minor* by Popusch; **Lynn**

Dupin, voice, and three numbers by **Beulah Russell**, organ, and **Phyllis Roberts**, piano. **Dorothy McPhaden** was Lynn's accompanist.

INDIANAPOLIS: Meetings this year have included a program by our scholarship winners and a Panhellenic reception for freshman girls in early fall. In October we also enjoyed an interesting and instructive visit from our Province Governor, **Virginia Hoogenakker**, and in November we celebrated Founders Day with other chapters at District Conference at De



RUTH THRASHER, DORTHY MUNGER,
and WANDA WHEELER

Pauw University. . . . It was Guest Night in December for husbands and escorts at Holcomb Gardens at Butler University, with our Money Tree. In January it was a Guest Program with Sigma Alpha Iota at Lilly Hall on the Butler campus.

KANSAS CITY EVENING: We presented a Musicale on March 10, followed by a reception. Soloists in-

cluded Mary Anne Stern, Dolores Mae Waters, and Violet Orloff, vocalists; Anita Strumillo and Roberta Young, pianists; and Florence Lockridge, flutist. The chapter Choral Ensemble sang four numbers under the direction of Rhea Cooley.

TOLEDO: Special chapter programs for this year were given at the Toledo Museum of Art and the University of Toledo. At the former, on November 3, the Vocal Ensemble from *Epsilon*

chapter performed, and former National President Ava Comin Case was guest pianist. Esther West, pianist, and Florence Fisher Miller, violinist, completed the program which was followed by a reception and tea at the home of Margaret Rinderknecht. Later in the month, on November 17, Founders Day was observed with a program by the same *Epsilon* ensemble, Gladys Chisholm and Esther West, pianists, and Florence Miller, violinist. At a number of meetings reviews from "100 Years of Music in America," by Paul Henry Lang, were given.

Twins at Twin Pianos

Last year Faith and Hope Lawson, twin duo-pianists, appeared in their home town of Williamsport, Pennsylvania, in a Benefit Concert for the Educational Fund for A.A.U.W., winning a well deserved ovation.

Since the age of ten the twins have been performing together, and they have appeared extensively in New York and Pennsylvania, as well as elsewhere, for the National Federation of Music Clubs, colleges and civil organizations.

They have received Bachelor of Science and Master of Science degrees from Juilliard where they studied piano on scholarships and with Gordon Stanley, Joseph Bloch, and Sascha Gorodnitzki. They also held scholarships at the Chautauqua Summer School of Music. At Juilliard they were initiated into *Epsilon Psi*. They have appeared over station WNYC, New York, in a MU PHI EPSILON broadcast. Faith, Mrs. Richard P. Karnan, is now living in Los Gatos, California, where her husband is a real estate broker, and Hope, Mrs. William E. Creighton, lives in Dayton, Ohio, where her husband is a hospital administrator. Both girls teach privately and practice individually until the time prior to their scheduled engagements.



FAITH
LAWSON

HOPE
LAWSON

BOSTON: Members who have performed at our chapter meetings this spring have been Virginia Cochrane, vocalist, accompanied by Stella Levenson, and Adele Trytko, pianist. In April the Wellesley College Chamber Music Society gave us a fascinating program of early works written for consorts of viola de gamba and recorder. We were also given the opportunity to have a close look at these rare and beautiful instruments. . . . Our Spring Concert was held on March 11 and honored the 60th anniversary of the founding of MU PHI EPSILON. Our performers were Therese Mueller, harpist; Frances Eaton Ruggiero and Ruth Rockafellow Birch, playing Brahms' *Sonata Op. #100* for violin and piano; and the piano duo of Anne Marie Digiacoimo Häussler and John Sebastian Häussler performing works by J. C. Bach and Poulenc. . . .

SAN DIEGO: During the year we have had programs given by a string trio, Josephine Hutchinson, Lois Miers and guest Marjorie Misbeck; Mabelle Lilburn and Caroline Lasker, playing Beethoven's *Sonata #5* for violin and piano; organ and piano numbers by Connie Virtue, Judith Pershing and Virginia Cox; and a delightful piano program by Barbara Sterling Remington.* The latter was on the occasion of our Founders Day celebration and Barbara played compositions by her father, our Founder, Dr. Sterling, as well as some of her own. Children of our members gave the program at our Christmas Tea which was held at president Jeanne Roodhouse's home. In late spring we gave a public program with Sigma Al-

pha Iota which was very successful. November 1 our chapter had a table at the Musical Merit Foundation "Command performance" dinner and concert, and Bernice Hisken was one of the judges for the preliminary auditions . . . later in the month five of our members—Jeanne Roodhouse, Margaretta Walker, Opal Skolnick, Maxine Harlow and Mary Caldwell attended the 60th Anniversary banquet in honor of Founders Day in Pasadena.

MIAMI: Bettylou Scandling, our Province Governor, was with us for our Founders Day Celebration, held at the home of Doris Quinn. Doris and Marjorie Herrick, guest violinist, gave us a lovely program, and Louise Sterling Burkhart read the composite letter by her father, our Founder, issued from National.

PASADENA: Our theme for meeting has been "A Brunch and a B," and we have heard talks and music of "Sons of Bach," Britten, Bernstein, Bloch and Bartok. Ann Stout, Whittier Alumnae chapter, gave us a stimulating musical experience with Bartok. Illustrating his piano compositions she played in tone clusters, half-steps apart; in Polytonality, Polymeter, Polyrhythm, nine-tone scales in exotic mode, 9/8 major and minor, and a pattern of 4 plus 5. The effects of these mathematical gymnastics were amazing to the ear, even pleasing, with pictorial or storytelling suggestions.

CONNECTICUT VALLEY: In March we met at the home of Nancy Dewing. The musical program was given by Ursula Warren, oboist, from *Alpha Beta* chapter. Ursula is this

* Daughter of Dr. Winthrop Sterling.

year's recipient of our Scholarship Award. We also honored graduating seniors of *Alpha Beta* chapter with a reception at this time. . . . Our final meeting and musicale of the year was held at the home of **Rose Mende**.

CENTRAL CHICAGO: As a means of celebrating MU PHI EPSILON's 60th Anniversary our chapter presented **Elizabeth Kidd**, noted ethno-musicologist and former National President, in one of her inspiring lecture-demonstrations, featuring her world wide collection of native instruments and folk songs. Elizabeth has a collection of more than 300 instruments. She not only plays them but sings many of the native songs. Among those which she demonstrated on April 16, were a Peruvian whistling jug, an African hour-glass drum, an Indonesian *angklung*, a moon guitar from China, flutes from Thailand and India, a Greek bagpipe, and a Cretan violin. . . .

SACRAMENTO: Grayce Kent Clark will be among those honored at the National Convention in August for her 40 years of loyal membership in MU PHI EPSILON. She was graduated from Drake University, was National Chairman of Magazine Agency, National Editor, 1949-51, and president of Des Moines Alumnae.

PASADENA: Our April Concert was part of the Pasadena Festival of Arts. Performing were **Pauline Law**, mezzo-contralto, our scholarship award winner and now on concert tour in Europe; **Marjorie Duff**, **June Nelson** and **Sima Mannick**, pianists, and **Doris Henry**, flute.

performers and performances

SEATTLE: Members of the Mu Phi Epsilon String Ensemble appeared in a television broadcast on March 18. Performing the Brahms *Sextet, Op. 36*, were **Donna Weller** and **Phyllis Rowe**, violins; **Sigrid Lonidier** and **Jane von Harten**, violas; **Eleanor Wilson** and **Juliet Cunningham**, 'celli. With them on the program was **Gwendolyn Remy**, pianist. **Rachel Welke**, chapter president, was the announcer and commentator.

ALBUQUERQUE: **Darlene Evers** sang the mezzo-soprano part in the Verdi *Requiem* presented in the spring by the University of New Mexico Chorus and Orchestra.

EVANSTON-NORTH SHORE: Many of our members have been appearing in public performances. Appearing as soloists with orchestras have been **Wanda Paul** and **Electa Tideman**. **Ruth Siebel**, accompanied by **Electa**, gave an outstanding performance in the J. S. Bach *Cantata No. 52* at the North Shore Musicians Club, and **Elizabeth Wysor** appeared in the Faculty Recital at Northwestern. **Evelyn Bray**, **Harriet Glass** and **Helen Keith** have all presented excellent school choral groups.

DETROIT: **Emily Austin Adams**, concertmaster of the Detroit Women's Orchestra, played the Mendelssohn *E Minor Concerto* on their April concert. Detroit Alumnae chapter sponsored the Afterglow following the concert.

Lorene Michalopoulos

Lorene Michalopoulos, who is lecturer in music (voice) at the University of Texas, has had professional experience in opera, oratorio, recital, as church soloist and choir director, and soloist with symphony orchestras.

She has appeared in Austin, Dallas, Milwaukee, New York, Chicago, Pittsburgh, Philadelphia, to name a few.

She is a graduate of the University of Texas and Columbia University, receiving a B.Mus. in Voice from the former and a M.A. in Music Education from the latter.

In March the Austin Alumnae presented Lorene in a program entitled "Music in Greece" in which she included Greek folk songs and folk dances as well as a film, "On Mediterranean Shores." During the previous spring Lorene had spent six weeks in Greece. Her work as soloist and choir director in several Greek Orthodox Churches has given her close contact with Byzantine music, and she is now compiling a hymnal of Byzantine Chant in English for use by the choir of St.



LORENE MICHALOPOULOS

Elias Syrian Orthodox Church in Austin where she is at present the choir director. This work entails transcribing and arranging as well.

In the field of opera Lorene appeared this year with the Houston Grand Opera Association, was *Tosca* in the University opera production on stage and TV, and sang *Carmen* with the San Angelo Symphony Orchestra. She also performs on piano, violin and viola. *Austin Alumnae* chapter is proud to claim Lorene as one of their very active members.

At the Bach Festival in Carmel, California, 1963, MU PHI EPSILON instrumentalists were active in solo and ensemble performances. In picture at left, seated in front is **Eva Heinitz**, *Tau-Seattle*, viola de gamba and 'cello. Standing in back are **Rosemary MacNamee Waller**, *Mu Nu*, violin, who was concert mistress of the Festival Orchestra; **Doris Henry**, *Phi Nu*, flute; **Norma Lee Madsen**, *Epsilon Mu-Salt Lake City*, violin, a member of Utah Symphony and String Quartet; **Carolyn Jo Funk**, *Mu Nu*, 'cello.

Mu Phi Epsilon Instrumentalists at Carmel



composers

Emma Lou Diemer

WASHINGTON: Emma Lou Diemer, one of MU PHI EPSILON's nationally known composers, had the world premiere of her *Concerto for Flute and Orchestra* performed by the Omaha Symphony Orchestra on February 17-18, 1964, with Mark Thomas, flutist, and under the distinguished baton of Joseph Levine.

The *Concerto* was written for presentation by the Omaha Symphony and is dedicated to Mr. Thomas. It was written in May and June of 1963, and orchestrated in July. "The intent of the composer," writes James B. Peterson in the program notes, "is to present music that is lyrical and melodic as well as rhythmically vital."

Emma Lou received her degree in composition from Yale School of Music, and her Ph.D. from Eastman School of Music. Under a Fulbright Scholarship she continued her studies in Brussels, Belgium, and the Berkshire Music Center. She has won many composition awards and has been commissioned to write specific compositions. At present she is the Ford Foundation composer-in-residence at Arlington, Virginia.

MIAMI: A musical play, "Peace on Earth," written by Rosalind Wallach, was published in the *Grade Teachers Magazine*. . . . Carolyn Davenport recently won first place in the Florida Federation of Music Clubs composition contest with her *Toccata Espanol*.

PORTLAND: The *C Major Concerto* for piano written by Jean Williams



DR. EMMA LOU DIEMER

was performed this past spring by a young pupil of Maude Stehn, assisted by a Youth Orchestra. Jean's music is used by Nellie Tholen in her pedagogy courses as examples of what to look for in interesting harmonies and rhythms when choosing music for the student. . . . Sister Teresine of Marylhurst College was commissioned by the Gregorian Institute of America to write a setting of the Ordinary of the Mass in the vernacular. . . . Jean Margaret Sharp's *Concerto for String Orchestra* was performed by the Portland Chamber Orchestra under Boris Sirpo. It was the winning composition in the 1962 contest sponsored by that orchestra.

LOS ANGELES: Ramona Blair Mathewson's *Three Sentimental Songs: Love, If You Must Go, One More Spring and Firefly Nocturne* were sung by Bernice Mathison in a benefit concert for the Lincoln Memorial Congregational Church Building Fund in June, Ramona at the piano. The poems set to music are from "Brief Aprils" by Edythe Hope Genée.

Service

scholarships

CLEVELAND: Annually we give a \$50 scholarship to a MΦE senior at Baldwin-Wallace Conservatory and to one at Cleveland Institute of Music. This year the auditions were heard at a Silver Scholarship Musicales and Tea. Three girls from each school participated and the two winners were Linda Riddles of *Mu Phi* chapter at Baldwin-Wallace, and Nancy Hazelton of *Phi Omicron*, Cleveland Institute.

AUSTIN: Our chapter presented Helen Haupt in concert, followed by a Silver tea, for the benefit of our scholarship fund. Helen is well known as a concert pianist and is Associate Professor of Music at the University of Texas.

ALBUQUERQUE: A benefit bridge was given this year for our annual scholarship fund raising affair, and our scholarship award went to Martha Ann Sargent, organist, of the University of New Mexico.

SEATTLE: Two concerts were scheduled for our Artist Program Series. On April 6, we presented Dr. Stanley Chapple, pianist, former director of the University of Washington School of Music; Byrd Elliot, violinist, and Harriet Westling Shank, 'cellist, in a program of Beethoven, Respighi, and Shostakovich. On April 27, Donald and Patricia Smith, duo-pianists, gave

the premiere performance of *Sonata for Two Pianos* (1963) by Paul Tufts, University faculty member. Compositions by W. F. Bach, Stravinsky, and Reger completed their program held in Meany Hall on campus. This series benefits our Scholarship program.

WICHITA: Our annual Musiganza Concert Tea was attended by a large crowd. \$350 was raised for four collegiate scholarship awards.

STOCKTON: During the annual breakfast at the University of the Pacific, which is in honor of the graduates and their mothers, our chapter awarded the traditional scholarships to deserving and outstanding collegiate members from *Mu Eta*.

BALTIMORE: 150 tickets were sold for an April Saturday night "pop" concert by the Baltimore Symphony. One-third profit was realized by our chapter for our Scholarship fund. We also received \$1 from each one listed as patron for the concert. . . . Joanne Cohen was awarded a Fulbright scholarship for study in Rome this year.

DETROIT: Our Young Artists Concert of last fall in which we presented Dolores Dardarian and Linda Nager, made it possible for us to give each of them a check for \$228.85 with which to continue their studies. Patricia Craven was chairman of the successful affair.

DENVER: The Progressive Piano Series Scholarship was won by Ruth Reese. She attended a seminar at the Mozarteum in Salzburg this summer as a result of it.

PORTLAND: Our Spring Musicale in April included members from five Oregon chapters: **Katherine Fischer**, Λ Δ -*Portland State*, pianist, and **Barbara Dollowitch**, Λ Φ -*Marylhurst*, soprano, our two fall Scholarship winners; **Suanne Hower**, Φ Δ -*Willamette*, 'cellist; **Doris Helen Calkins**, *Eugene Alumnae*, and her daughter, **Sally Maxwell**, *Portland Alumnae* harpists, performing as a harp duo. The large audience enthusiastically approved the variety and brilliance of the program which included Bach to Britten and Mozart to Kodály.

Mother and Daughter—Heavenly Duo

It was seventeen years ago last Mother's Day that **Doris Helen Calkins**, *Eugene Alumnae*, and her daughter, **Sally Maxwell**, *Portland Alumnae*, made their debut as a harp duo. Since that time they have made many public performances.

A harp duo is rare, especially that of a mother and daughter. The past season has been successfully eventful for Doris Helen and Sally, as they appeared on the University of Ore-

DORIS HELEN CALKINS AND SALLY CALKINS MAXWELL



KANSAS CITY: Performing on our third Scholarship program were: **Ruth Griffith**, pianist; **Sharon Sooter**, mezzo-soprano; **R. Edward Sooter**, tenor, accompanied by Robert Hiller; a string trio consisting of **Joanne Baker**, piano, **Alice Decker**, violin, and **Jay Decker**, 'cello. The fourth and final program presented **Nelita True**, pianist, and **Gary Sigurdson**, first flutist of the Kansas City Philharmonic, accompanied by **Walter Cook**. . . . The proceeds from the four concerts went into five scholarships to *Kappa Alpha* girls, totaling \$525.

gon campus in a recital for the Association of Performing Arts, in Portland for the MU PHI EPSILON Scholarship concert, and at the University again, playing Hindemith's *Concerto for Piano, Two Harps and Brass*. Their debut had been at their church in Eugene, and it is there that they return annually to play for Christmas and Easter services. Returning to the University campus is a pleasure, for it was there that both had, in their time, been president of *Nu* chapter.

Doris Helen and Sally live 120 miles apart, in Eugene and Lake Grove, near Portland, but they often get together to practice. Friends jokingly accuse them of practicing by long distance telephone!

Doris Helen started her career at an early age in Portland with Ruth Lorraine Close, later continuing her studies with Kajetan Attl in San Francisco. Recently she has studied with Mlle. Henriette Renié, famous French harpist, and Marcel Grandjany of Juilliard. Sally's first teacher was her mother. Later she studied in France with Mlle. Renié.

Benefit Tea at Embassy of Spain Brilliant Affair

WASHINGTON: His Excellency, Antonio Garrigues, Ambassador of Spain, graciously permitted the *Washington Alumnae* chapter to use the Embassy of Spain for a Benefit Tea to raise funds for scholarship purposes for music students at the American University in this city.

The beauty of a crisp fall afternoon was matched by the beauty of the exquisitely furnished and decorated Embassy. The Ambassador and Senora Emilio Garrigues, sister-in-law of the Ambassador, who served as his hostess, with **Bettylou Scandling**, National First Vice-President, **Lola Faust**, president, and other officers of the chapter, greeted the several hundred guests who enjoyed the sumptuous Tea while strolling through the rooms of the Embassy and the fascinating glass-enclosed tiled patio.

A two-part program of unusually brilliant music was furnished by **Rilla Mervine**, contralto, accompanied by George Manos and Regis Ferruzza, guitarist.

The scholarship committee, headed by **Norma Bird** and **Beth Thewlis**, was delighted to receive over \$1,100 from the memorably successful event.

CONNECTICUT VALLEY: Our Scholarship Concert in February was given by **Lee Venora**, well known in concert field and opera. We followed the concert with a reception in her honor. This chapter gives an annual award to an outstanding member of *Alpha Beta*. Miss Venora was initiated by *Alpha Beta*.

M
W
P
H
S
E
P
I
S
O
N

Under the honorary sponsorship of
Mrs. Kennedy
and
His Excellency, the Ambassador of Spain
The Washington Alumnae Chapter
Ala Phi Epsilon
International Professional Music Society

cordially invites you to attend
A Scholarship Benefit

Embassy of Spain
2801 16th Street, Northwest

Saturday, October 25th, 1963
Four to six o'clock

R.I.P.

INDIANAPOLIS: Our Spring Chamber Music Festival of three concerts opened in March with a program at Indiana War Memorial, given by the Indianapolis Symphony String Quartet. This series supports our Scholarship program. The second concert was given by our own **Dorothy Munger**, pianist, assisted by Polly Floyd, flute, Ernest Floyd, 'cello, and Elaine Norwood, soprano. The third concert was held at Butler University with the Jordan College Faculty Woodwind Quintet giving the program. One of the members of the Quintet is **Rosemary Lanz**, clarinetist.

SAN DIEGO: Individual members raised scholarship fund donations by holding a "garage sale" for their neighborhood consumption. They don't sell the garage, but do sell things they accumulate and that friends give them in a "miniature rummage" sale. These have been going over very successfully.

Interlochen Winners of MΦE Scholarships

Winners of the MU PHI EPSILON 1964 Scholarships for Summer Session at National Music Camp, Interlochen, Michigan, are Linda Moss, from Midland, Michigan, and Erica Goodman, of Toronto, Ontario. These young girls attended the Music Camp last summer, thus becoming eligible for the \$300 scholarships given by the sorority.

The awards were presented to the girls at the close of the 1963 session by Dr. Joseph E. Maddy, president and founder of the National Music Camp and Interlochen Arts Academy.

Linda held the first viola chair in the National High School Symphony Orchestra and has attended the camp for the past three summers. She plans to become a music teacher.

LINDA MOSS—ERICA GOODMAN



Erica was first harpist in the National High School Symphony Orchestra and has attended the Music Camp for the past seven summers. She plans to become a concert performer.

Selection of Scholarship winners is based on musicianship, character and campmanship.

The 1963 Summer Session was the 36th season for the world's largest and most famous summer music camp. Eight symphony orchestras, five bands, and twelve choral groups presented nearly 350 concerts during the summer session.

Remember the Memorial Foundation

TOLEDO: We have three generations connected with our chapter. Mrs. Alfred Fisher is a patron, and we honored her birthday with an orchid corsage at our supper in May. Her daughter, Florence Fisher Miller, is a fine violinist and one of our most active chapter members. Florence's daughter, Susan Miller Loebs, was a member of *Gamma* chapter and graduated from the University of Michigan *cum laude*, *Phi Beta Kappa*, *Phi Kappa Phi* and *Pi Lambda Theta*. She is now living in Wichita Falls, Texas, where her husband is stationed at the air base. Patricia Sourenne presented violin and viola students in a program, "Music for Young String Players." All of the numbers were written by Patty.

The Brewster-Allison \$1,000 Piano Award is offered biennially in spring, and the winner appears with the Austin Symphony the following fall. The Award is so-named in honor of Mrs. Few Brewster and Dr. and Mrs. Irl Allison.

Myra Kilpatrick Brewster, *Mu Theta-Austin Alumnæ*, is a well known pianist, and has been long associated with the National Federation of Music Clubs and Texas Federation of Music Clubs. Dr. and Mrs. Irl Allison were founders of the National Guild of Piano Teachers, of which Dr. Allison is president.

Myra was president of the Texas Federation of Music Clubs in 1946-1948 and also served as Program Chairman during six administrations. For the National Federation of Music Clubs she was the Chairman of the Course of Study and Program Building from 1949-1953, and Chairman of the Department of Education in 1953-1955, which included the former.

Myra has judged National Guild of Piano Teachers Auditions in cities of Virginia, Florida, New Mexico, Iowa, Illinois, Missouri and all over Texas. She has also judged recordings for the Guild and for many Federation Festivals.

For her outstanding service in the Federations and Piano Teachers Guild the *Austin Alumnæ* Chapter proudly nominates **Myra Brewster** for

Recognition

For Christmas Gifts:

FRIENDSHIP CORNER and
MAGAZINE SUBSCRIPTIONS

SACRAMENTO: At a luncheon held in the Del Paso Country Club on June 6, we presented the winner of our scholarship, Karen Arneson, *Alpha Delta*. A picture of our president, Marjorie Lawrence, and Karen is on page 19 of this issue.

PALO ALTO: This year we awarded scholarships of \$200 each to Jennifer Chase, *Phi Mu*, contralto, and Christine Heilbron, *Epsilon Omega*, pianist, and presented them at our annual Scholarship Luncheon at the Cabana Hotel. Merrilee Stucke, *Epsilon Omega*, our last year's winner, completed the program. Mary Beth Morris was chairman for the affair, a high point of the spring.

Don't be a DROP-OUT
DROP IN—and join your
nearest Alumnæ chapter.

projects

WICHITA: A benefit concert was given to assist the Wichita Art Association in September. Bea Pease performed with the Wichita String Quartet and Julianne McLean was solo pianist. We sent 39 pounds of music to *Alpha Tau* chapter in Manila, 97 pounds of music and books elsewhere in the Philippines, and 5 pounds of books to Asian Students. The \$18.75 mailing and shipping cost was well spent. . . . For help at home, we made ten new robes for *Epsilon Phi* chapter. . . . We presented Music in Hospital programs at five Hospitals and Homes. Three programs were also given at the Institute of Logopedics by six of our members. Marjorie Monts donated 21 hours of individual instruction there, and equipment donated for them included record players, records, percussion instruments and albums. . . . To help the new Kansas chapter, *Alpha Chi* at Southwestern College, Winfield, our chapter gifted them with their charter fee. . . .

ANN ARBOR: The annual fund raising Tea and Musicale for the Music Therapy program at Veterans Hospital was held in May at the Women's City Club. The musical program preceding the tea was presented by David Yeaomans, one of Gyorgy Sandor's Doctoral students and a Teaching Fellow at the University. The therapy program is headed by Gerald Spry, a senior at Michigan State University's School of Music. Mr. Spry is under the guidance of Dr. Robert Unkefer, faculty adviser for music therapy. Approximately \$650 was realized by the affair.



GERALD SPRAY, center, with patients

PALO ALTO: Over 100 pounds of music and instruments were collected and sent by this chapter to Silliman in the Philippines, with Peg Oram as chairman.

KANSAS CITY: Joan Harper, Music Therapy chairman, and ten other members have donated 1½ hours a week for five months to the Psychiatric Receiving Center at the General Hospital. They encourage the patients to sing around the piano. The girls have been invited back next year.

COLUMBUS: Dorothy Jewett, our president, gave a piano in memory of her parents to the psychiatric department at Riverside Hospital. She works with the patients there once a week. . . . Doris Scherziz, symphony violinist, does much work in therapy in hospitals and like institutions.

Music Therapy Gains New Dimensions in Salem

by Myra Brand
Phi Lambda-Salem

Music Therapy takes on new dimensions this fall in Salem, Oregon, involving Oregon State Hospital, Willamette University's College of Music, *Phi Lambda*, Salem Alumnæ, and *Phi Lambda* Patrons of MU PHI EPSILON.

Courses in Music Therapy at Willamette were first offered in the fall of 1963 when Professor Maurice Brennen returned from a leave of absence spent at Michigan State University studying Music Therapy. He had been sent on a financial grant from the University. This program at Willamette has become a reality initially through the efforts of Dean Melvin Geist of the College of Music, who has worked to stimulate activity in this field since 1948.

Beginning in the fall of 1964 a four year course of study, working toward a Bachelor of Music degree

with a major in Therapy, will be offered. This will include courses in Psychology of Music, The Influence of Music on Behavior, Music Therapy Techniques, and Hospital Orientation, as well as general music major courses. Emphasis will be on sociology, psychology, and anatomy. Six months of internship at the Oregon State Hospital in Salem, will be required for graduation. However, a full time registered Music Therapist is needed at the Hospital before this internship

(Continued on page 54)

Regarding the pictures on this page:
Below: Fig. 1—CHARLOTTE CASTILLO, president of $\Phi \Lambda$; GLADYS COE, president of Salem Alumnæ; Maurice W. Brennen, Associate Professor of Music. Mr. Brennen: "Two instruments which are very useful in Music Therapy are the Recorder and the Autoharp. Their structured character makes them valuable for use with psychiatric patients. The quiet quality of each one blends well with vocal music. The Recorder can play a moving descant or obbligato, and the Autoharp provides a quietly strummed choral accompaniment." Fig. 2—WENDY HUNT, winner of the Patrons' Scholarship for Music Therapy. Fig. 3—EDWINA WILLS, with choir. Fig. 4—BETTY ANDERSON, left, with group of

FIG. 1.



FIG. 2.



FIG. 5.



FIG. 3.



FIG. 4.



patients in a singing game. Fig. 5—MRS. MAURICE BRENNEN, president of Patrons of $\Phi \Lambda$; DR. MELVIN GEIST, Dean of College of Music, Willamette University; MRS. A. A. SCHRAMM, past president of Patrons of $\Phi \Lambda$.

Dr. Merle Montgomery, *New York Alumnae* chapter, was honored on June 7, when she received a 1964 Alumni Citation at the Commencement exercises of the University of Rochester. The Citation recognized "the remarkable range of her professional activities. Now associated with the Department of Music at Oxford University Press, she has variously succeeded as author, composer, teacher, editor, musicologist and administrator."

Merle graduated from the University of Oklahoma, spent two years in France, studying with Isador Philipp and Nadia Boulanger, and on returning home entered the Eastman School of Music, University of Rochester, where she received her M.A. and Ph.D.

Merle is a member of the Board of Directors and Executive Committee of the National Federation



DR. MERLE MONTGOMERY

of Music Clubs, Educational Director of the Music Department of the Oxford University Press, and a past president of the *New York Alumnae* chapter of MU PHI EPSILON. This chapter proudly nominates Merle for

Recognition

community

COLUMBUS: Glorian Thomas, former National Vice-President, was president of the Women's Music Club of Columbus. She also gave several chamber concerts. You all know her specialty, I am sure, the harpsichord. . . . Agnes Wolfrom is president of the Women's Association of the Columbus Symphony Orchestra which includes 30 units. . . . Juanita Harrison has organized a "Bell Choir" for which she does the arrangements. She also directs several youth choirs.

DENVER: Dorothea Seeman, Assistant Professor of Music at Denver University, was elected president of the

Colorado State Music Teachers Association. . . . On the Board of Judges for the Regional San Francisco Opera Auditions this spring was Ada Belle Spencer, also Donna Schoep's husband, Dr. Arthur Schoep. . . .

SAN FRANCISCO: June Weybright Reeder was General Chairman of the California Federation of Music Clubs Convention in Carmel last June.

PALO ALTO: Ramona Grim has been busy in Westbay Opera, and Barbara Welch and Joyce Berthiaume have been active in the Peninsula Symphony. . . . A double trio

has entertained us at meeting and also sang the invocation at the state convention of the California Federation of Music Clubs in Carmel. Members are: Margaret Douglas, Marian Everson, Ruth Peters, Helen Price, Dorothy Reel, and Marjorie Sherman. Accompanist is Marilyn Reid.

DETROIT: Hilda Humphreys, former National Vice-President, is president of the Detroit Society for the Prevention of Blindness.

BOSTON: On January 22, Georgene Rasmussen and Janet Nevling appeared with selected members of Chorus Pro Musica, New England Conservatory Chorus, and Harvard Radcliffe Glee Clubs in a Memorial performance of the Mozart *Requiem* for the late president, John F. Kennedy. They were accompanied by the Boston Symphony Orchestra directed by Eric Leinsdorf, and the performance was televised from Holy Cross Cathedral.

" . . . our inner shrine is ever bright . . . "

CALLAN, Betty, Phi Pi, Wichita Alumnae

Wichita Alumnae chapter deeply regrets to report the death of Betty Callan in March, 1964, at the age of 47. Nine years ago she was initiated into *Phi Pi* chapter at Wichita University as a special election candidate.

Betty did an outstanding job this year as creator and co-editor of our monthly newsletter, "The Score." She and Angela Kennedy received national recognition for their clever format in the March issue of *TRIANGLE*.

Besides caring for five children, Betty was violinist in the Wichita Symphony and the M Φ E string quartet. She was active in P.T.A., the University Dames, and Holy Savior Catholic Church. She was always willing to do any job asked of her, and often gave of her talents at our meetings. She is survived by her husband, Edward, and five children.

The world and Mu Phi Epsilon are better for the life and service of Betty Callan.

COSBY, Anne Lee, Mu Theta Gamma, Austin Alumnae

Lee died in Austin on April 12, 1964, after a brief illness. She had lived for a number of years a quiet life after retirement among the rare and beautiful flowers which she was very successful in bringing to bloom. Also, she was successful and known for her talent for friendships, starting them and developing them through the years. In music

she made her mark in central Texas communities as a teacher of dancing (Interpretive Dancing in the Department of Physical Education, University of Texas), and later as a teacher of piano. She maintained a large studio in both fields. During World War II years, and after, her teaching associate was the famous Polish pianist and teacher, Walter Gilewicz.

FORBES, Barbara Louise, Epsilon Theta, Sacramento Alumnae

The Sacramento Alumnae chapter is saddened by the loss of Barbara Forbes, who died from injuries received when her automobile overturned on March 16, 1964.

Barbara, who was 25 at the time of her accident, received her Bachelor's degree at Linfield College in Oregon, and her Master's degree from Cornell University in New York. A tireless worker, her many activities included teaching home economics, and girls' physical education at Hiram Johnson Senior High School, public performances with local ensemble groups (she was a flutist), leading youth groups, and active participation in our chapter as our vice-president.

HIRTH, Elaine, Toledo

Elaine, a Toledo high school English teacher for forty-two years, died in February, 1964.

Music Therapy—Salem *(Continued from page 49)*

plan can be realized. The state is interested in this program, and has expressed hope that budget difficulties will not prevent an early realization of this need.

The Patrons of *Phi Lambda* chapter have awarded a \$50 scholarship to Wendy Hunt, past president of *Phi Lambda* and 1964 graduate, who will continue this fall with the special courses now offered in Music Therapy.

Salem Alumnae received a Merit Award in recognition of outstanding service in music therapy activities in June of 1962. We are continuing our endeavors in this field with two major programs being carried on at present. Betty Anderson is continuing a weekly program of volunteer work at the State Hospital with group musical activities including singing and dancing games. She tells of one woman in her group who has a Polish hymn book, and whenever they sing a hymn that can be found in her book she sings along in Polish. Betty says the women's ward seems to respond readily to music therapy direction, but in the men's ward many hold books and will attempt to sing. One man whistles everything and another keeps on singing after the music is finished, so there is participation and interest, and the doctors feel this is very valuable. Other Alumnae members have contributed by giving programs on various occasions at the hospital.

Our second major endeavor in music therapy is through the work of Edwina Wills, who is carrying on a proven beneficial program of integrating hospital patients into the life of her church, the West Salem Methodist, of which her husband is the minister. Each week at least fifteen

patients are brought to the church through the cooperation of the head chaplain at the hospital and the church authorities. These people sing in the choir, pour at coffees, participate in pot luck suppers and other church activities. This program was begun last fall, a year ago, in 1963, with patients who had been hospitalized for over fifteen years, and who the officials felt would always be residents there. By the spring of this year, five patients were released and more are being helped all the time.

The most rewarding and warming experience to our chapter was the part we had in the rehabilitation of a M Φ E sister. A few years ago through Edwina, who was then the choir director at the State Hospital church service, a member of MU PHI EPSILON was discovered at the hospital who had been there for twenty-eight years. She held both a Bachelor's and Master's degree and had been a most promising young teacher. She was invited to Alumnae meetings, with approval of the authorities, and welcomed into our activities. In two years she was released from the hospital, was settled in another city not far away, and will soon be self-supporting. She belongs to a MU PHI EPSILON Alumnae chapter, and gives MU PHI EPSILON recognition for having opened the door to a new life.

The Music Therapy program at Willamette has not yet reached the point where an evaluation and correlation can be made between the course of study and MU PHI EPSILON activities in that area at the Hospital. When a registered therapist at the Hospital is acquired, it will open the

(Continued on page 62)

Awards Contests Competitions

Madge Carthcart Gerke
National Sixth Vice-President

FRIDAY MORNING MUSIC CLUB FOUNDATION, INC. OF WASHINGTON, D.C. Auditions for strings, singers and pianists (rotating). Cash prizes. Semi-finalists and finalists judged by three nationally known in the respective fields. April 30, 1965—singers, Spring of 1966—pianists. First award \$1,000. Additional awards. Apply: Kathryn Hill Rawls, Chairman of Auditions, 1805 37th St., N.W., Washington, D.C.

NATIONAL GUILD PIANO TEACHERS: VAN CLIBURN AWARD of \$10,000 given quadrennially. Apply N.G.P.T. Office, Box 1113, Austin, Texas. (Also) **BREWSTER-ALLISON AWARD** of \$1,000 given biennially to a pianist under 25 and an American. \$500 to winner with additional \$500 at time of subsequent guest performance with Austin Symphony. This award honors Mrs. Few Brewster (Myra), member of Mu Phi Epsilon Alumnae Chapter of Austin. Apply to her, 2000 Schulle Ave., Austin.

WILLIAM MORRIS AGENCY FOUNDATION, INC. SCHOLARSHIP & MAY CO. FOR STRINGS: \$1,000 grant for excellence in Performing and Creative Arts, available to degree and special studies. Apply: Dean Clement A. Miller, Cleveland Institute of Music, 11021 East Boulevard, Cleveland 6, Ohio.

MIDWEST UNIVERSITY, WICHITA FALLS, KANSAS: Graduate appointments. Persons selected teach two courses and enroll in two graduate courses. Awards \$1,500 to \$1,800 for nine months. Apply: Dr. Walter L. Wenner, Chairman Department of Music.

BROADCAST MUSIC, INC.: Thirteenth Annual Student Composer's Award. Applicant must be under 26 on Dec. 31, 1964. Prizes total \$14,500; \$250 to \$2,000. No limitations as to instrument or length. Inquiries: Oliver Daniel, Director SCA Project, Broadcast Music, Inc., 589 Fifth Ave., New York, N.Y. 10017.

UNIVERSITY OF COLORADO: Fellowships, Scholarships, Assistantships, Loans (\$500 to \$1,000). Inquire: Dean Warner Imig, College of Music, University of Colorado, Boulder, Colorado.

MICHAELS AWARD OF RAVINIA FESTIVAL: Candidates in voice, strings, or piano (amateur or professional); age 18 to 30 inclusive; American citizen. Preliminary auditions during April-May in New York, San Francisco and Chicago. Winner \$1,500 to further career and will appear with several large symphonies. Apply: Michaels Award of Ravinia Festival, 108 North State St., Chicago, Illinois 60602.

KATE NEAL KINLEY MEMORIAL FELLOWSHIPS: Candidates to present creative works. Apply: Dean Allen S. Weller, College of Fine and Applied Arts, Room 110, Architecture Building, University of Illinois, Urbana, Illinois.

TRINITY PRESBYTERIAN CHURCH HYMN CONTEST: Prize of \$100 for the best musical setting of a hymn text, in connection with a Festival of Church Music to be held in the spring of 1965. *Deadline:* December 1, 1964. For a copy of the rules of the contest and of the chosen hymn text, write to: Trinity Presbyterian Church Hymn Contest, 3003 Howell Mill Road N.W., Atlanta, Georgia 30327.

NATIONAL COMPETITION FOR GRASS ROOTS OPERA: Offered by Michigan Federation of Music Club. *Deadline:* January 1, 1965. Award: \$200 for an unpublished one-act score using women's voices with or without chorus. Dr. Barre Hill, Interlochen, Michigan.

Directory

MU PHI EPSILON was founded at the
Metropolitan College of Music in Cincinnati, Ohio, on November 13, 1903

FOUNDERS

DR. WINTHROP S. STERLING, died November 16, 1943
ELIZABETH MATHIAS FUQUA (Mrs. John W.), died May 17, 1950

PAST NATIONAL PRESIDENTS

Elizabeth Mathias Fuqua (deceased), A, 1904-05, 07, 08
Myrtal Palmer Leach (deceased), F, 1905-07
Elfrida Langlois Kent (deceased), A, 1908-11
Alice Davis Bradford Peck (deceased), A, 1911-13
Ora Bethune Johnson (deceased), Θ, 1913-15
Mary Towsley Pfau (deceased), A, 1915-16
Roxielette Taylor Yeates (Mrs. John), Θ, 1119 Rumsey Ave., Cody, Wyo., 1916-17
Harriet Thompson Wright (deceased), X, 1917-20
Doris Benson (Mrs. Walter), IA, Spikeswood Farm, Woodruff, Wis., 1920-22
Persis Heaton Trimble (deceased) MA, 1922-26
Lucille Eilers Bretschneider (Mrs. August, Jr.), A, 3426 Morrison Place, Clifton, Cincinnati, Ohio, 1926-28
Orah Ashley Lamke (Mrs. Geo. W.), Δ, R.R. 3, Box 245-D, Golden, Colo., 1928-30
Bertha M. (King) Van Tilburg (Mrs. V. B.), ME (deceased), 1930-32, 34-40
Dorothy Elizabeth Paton, F, 999 Center St., Douglas, Mich. 49406, 1932-34
Elizabeth Ayres Kidd (Mrs. A. Eugene, Jr.), MΞ, 1553 Hawthorne Lane, Glenview, Ill. 60025, 1940-42
Ava Comin Case (Mrs. Lee O.), F, School of Music, University of Michigan, Ann Arbor, Mich. 48108, 1942-48
Dr. Margarette Wible Walker, MN, 1675 Sunset Cliffs Blvd., San Diego, Calif. 92107, 1948-50
Ruth Row Clutcher (Mrs. John), O, R.D. 1, Selinsgrove, Pa. 17870, 1950-54
Eleanor Hale Wilson (Mrs. P. Raymond), T, 2800 39th Ave. W., Seattle, Wash. 98199, 1954-58
Rosalie V. Speciale, ΦM, 560 North First, San Jose, Calif. 91512, 1958-62
Janese K. Ridell, MF, 1141 Eldon Dr., Lincoln, Neb., 68510, 1962-64

NATIONAL COUNCIL 1964-1966

National President, Janet Adams Wilkie (Mrs. Richard F.), T, 7011 Highview Terrace, Apt. 304, Hyattsville, Maryland 20782
Nat'l First Vice-President (North Central Province Governor and Extension); Willa Beckham Lowrance (Mrs. R. S., Jr.), M Ω, 1184 Hancock Dr., N.E., Atlanta, Ga. 30306
Nat'l Second Vice-President (South Central Province Governor and Collegiate Adviser); Lois Ayres Gordon (Mrs. Russell E.), Φ II, 321 N. Woodlawn, Wichita, Kan. 67208
Nat'l Third Vice-President (Great Lakes Province Governor and Alumnae Adviser); Madge Cathcart Gerke (Mrs. Frank E.), K, 5003 N. Seville Dr., Indianapolis, Ind. 46208
Nat'l Fourth Vice-President (Pacific Southwest Province Governor and Music Adviser); Ann Blundell Scammon (Mrs. E. W.), M E, 4695 Francis Ct., Sacramento, Calif. 95822
Nat'l Fifth Vice-President (East Central Province Governor and Eligibility Adviser); Virginia Hoogenakker, E F, 3304 W. Capitol St., Jackson, Miss. 39209
Nat'l Sixth Vice-President (Pacific Northwest Province Governor and Contests Adviser); Viola M. Anderson (Mrs. Henry O.), Φ I, 1038 North First St., Fargo, N.D. 58102
Nat'l Seventh Vice-President (Atlantic Province Governor and Public Relations); Dr. Merle Montgomery, M T, 120 East 36th St., New York, N.Y. 10016
Nat'l Editor: Pearl Allison Peterson (Mrs. Howard M.), Φ N, 220 Greenstone Dr., Reno, Nev. 89503

NATIONAL EXECUTIVE OFFICE (N.E.O.)

Nat'l Executive Secretary-Treasurer: Virginia Porter Fiser (Mrs. Van E.), Ξ, 1139 N. Ridge-wood Dr., Wichita, Kans. 67208

MU PHI EPSILON MEMORIAL FOUNDATION

President: Rosalie V. Speciale, 560 North First, San Jose, Calif. 91512
Secretary-Treasurer: Agnes Helgesson (Mrs. Leslie A.), 26925 St. Francis Dr., Los Altos Hills, Calif. 94022
Chairman, Board of Directors: Bettylou Scandling, 35 Sutton Pl., New York, N.Y. 10022

DISTRICT DIRECTORS

District—Province—Director

- 1—(Atlantic) Therese Mueller, 28 Indiana Terr., Newton, Mass. 02164
Beta, Phi Upsilon, Epsilon Psi, Alpha Beta, Boston, Connecticut Valley, New York.
- 2—(Atlantic) Vera Neely Ross (Mrs. W. Arthur), 4628 Brandywine St., Washington 16, D.C.
Phi Gamma, Phi Psi, Alpha Zeta, Alpha Eta, Baltimore, Philadelphia, Washington, D.C.
- 3—(Atlantic) Mary Jane Harvey, 215 Lebanon Ave., Pittsburgh 28, Pa.
Psi, Mu Upsilon, Phi Omega, Epsilon Nu, Epsilon Upsilon, Alpha Theta, Rochester, Pittsburg.
- 4—(Gr. Lakes) Alice Patterson Jerabek (Mrs. Paul), 3000 Haddon Rd., Euclid, Cleveland 17, Ohio.
Phi, Mu Phi, Phi Omicron, Alliance, Cleveland, Cleveland Heights.
- 5—(Gr. Lakes) Camilla Ayers, 634 Neff Rd., Grosse Point 30, Mich.
Gamma, Epsilon, Phi Kappa, Epsilon Lambda, Ann Arbor, Detroit, Toledo.
- 6—(E. Cent.) Willena Schlueter (Mrs. Donald E.), 2022 Arrowood Pl., Cincinnati 31, Ohio.
Mu Pi, Alpha Alpha, Cincinnati, Columbus, Dayton.
- 7—(E. Cent.) Melva Crain, 3524 E. 10th, Indianapolis, Indiana.
Zeta, Kappa, Epsilon Omicron, Bloomington, Evansville, Indianapolis.
- 8—(Gr. Lakes) Pauline Kaschins, 10920 S. Ridgeland Ave., Worth, Ill.
Sigma, Mu Xi, Phi Sigma, Epsilon Xi, Alpha Omicron, Central Chicago, Chicago, Evanston-North Shore, Milwaukee, Urbana-Champaign.
- 9—(E. Cent.) Marian Davidson, 306 W. Parkway, Columbia, Mo.
Phi Theta, Epsilon Kappa, Epsilon Tau, St. Louis, St. Louis County, Columbia.
- 10—(N. Cent.) Virginia Shaw (Mrs. Earle H. 5340 X. Fremont Ave., Minneapolis, Minn. 55419
Mu Epsilon, Phi Iota, Fargo, Minneapolis, Richfield.
- 11—(N. Cent.) Mardean Holveck (Mrs. F. C.), 1014 Maplewood Dr., N.E., Cedar Rapids, Iowa
Omega, Mu Alpha, Mu Gamma, Mu Tau, Mu Psi, Phi Zeta, Cedar Rapids, Des Moines, Lincoln, Sioux City.
- 12—(S. Cent.) Mariette Simpson, 926 Grand, Emporia, Kansas.
Xi, Mu Mu, Phi Epsilon, Alpha Kappa, Alpha Mu, Kansas City.
(E. Cent.) *Alpha Kappa, Alpha Mu, Kansas City, Kansas City Evening.*
- 13—(S. Cent.) Martha Barkema, 919 S. 8th, Waco, Texas.
Mu Theta, Mu Chi, Phi Xi, Alpha Pi, Dallas, Austin.
- 14—(S. Cent.) Judith Haddon, 4810 Danberry, Wichita Falls, Texas.
Phi Tau, Epsilon Epsilon, Epsilon Pi, Alpha Iota, Alpha Nu, Alpha Sigma, Albuquerque, Fort Worth.
- 15—(S. Cent.) Ilah Dixon, Rt. 7, Box 423, Springfield, Mo. 65802.
Mu Kappa, Mu Rho, Phi Pi, Epsilon Phi, Alpha Rho, Alpha Chi, Denver, Oklahoma City, Tulsa, Wichita.
- 16—(Pac. N.W.) Jean Stevens (Mrs. H. K.), W. 508 Clover, Cheney, Wash. 99004.
Mu Beta, Mu Zeta, Epsilon Iota, Epsilon Rho, Spokane.
- 17—(Pac. N.W.) Eilene French Risegari (Mrs. S.), 4102 37th N.E., Seattle, Wash. 98105.
Tau, Epsilon Sigma, Seattle, Tacoma.
- 18—(Pac. N.W.) Doris George Hale (Mrs. Paul), 1286 Hillendale Dr. SE, Salem, Oregon.
Nu, Phi Lambda, Epsilon Delta, Epsilon Theta, Alpha Lambda, Alpha Phi, Eugene, Portland, Salem.
- 19—(Pac. S.W.)
Mu Eta, Phi Mu, Phi Chi, Epsilon Mu, Epsilon Omega, Alpha Delta, Alpha Epsilon, Fresno, Palo Alto, Sacramento, Salt Lake City, San Francisco, San Jose, Stockton, Berkeley.
- 20—(Pac. S.W.) Sue Jones Campbell (Mrs. Bruce), 1416 Linda Vista Dr., Whittier, Calif.
Mu Nu, Phi Nu, Epsilon Eta, Beverly Hills, Long Beach, Los Angeles, Pasadena, San Diego, San Fernando Valley, Fullerton, Riverside.

DISTRICT DIRECTORS

- 21—(E. Cent.) Sarah Emily Kersh, 1935 Peabody, Memphis, Tenn.
Epsilon Gamma, Epsilon Zeta, Alpha Gamma, Jackson.
 22—(Atlantic) Georgie Lee Fitz Stutsman, 808 Catalina Pl., Coral Gables, Fla.
Mu, Alpha Xi, Alpha Upsilon, Atlanta, Miami.

PROFESSIONAL PANHELLENIC ASSOCIATION

President: Mrs. Roxine B. Petzold, *Delta Omicron*, R.F.D. 2, Newark Valley, New York.
Secretary: Mrs. Ordry P. Ray, *Phi Chi Theta*, 1945 Lebanon Dr., NE., Atlanta 9, Ga.

NATIONAL CHAIRMEN

- Finance:* Eleanor Hale Wilson (Mrs. P. Raymond), 2800 39th Ave. W., Seattle, Wash. 98199
Assistant Finance: Beth Kalmbach Shafe (Mrs. Fred J.), 14811 Ashton Blvd., Detroit, Mich. 48223
Magazine Subscription Agency:
 Dorothy Niles McNeil (Mrs. Tom E.), 4132 Vesta Dr., Wichita 8, Kan.
Friendship Corner: Lucile Ferris (Mrs. Carl R.), 629 West 70 Terrace, Kansas City, Mo.
Marie Morissey Keith Scholarship Award and Elizabeth Mathias Honor Award:
 Virginia C. Jarvis (Mrs. George B.), R.R. 17, Box 500, Indianapolis, Ind. 46254
Mu Phi Epsilon Artist Members:
 Dorothy Barr Lemen (Mrs. M. F.), 21 Claremont Ave., New York 27, N.Y.
Mu Phi Epsilon School of Music at Gads Hill Center:
Director: Winifrid Erickson, 6620 N. Oshkosh Ave., Chicago 31, Ill.
Treasurer: Alma E. Grambauer, 1380 Henry St., Des Plaines, Ill.
Representative on Settlement Board: Mrs. Charlotte Johnson, 2622 Lincolnwood Dr. Evanston, Ill.
Music Librarian: Esther Wiedower, 2913 Swan Pl., Los Angeles 26, California.
Music Therapy: Dorothy Brin Crocker, 7506 Midbury, Dallas, Texas.
Ritual:
Sterling-Mathias Scholarships at Interlochen:
 Miriam McLaughlin (Mrs. R. H.), 1714 Hermitage Rd., Ann Arbor, Mich.
Editor "Metronome," Alumnae Newsletter:
 Gertrude Otto, 120 West 70 St., New York 23, N.Y.
Editor "Opus," Collegiate Newsletter:
National Convention 1966: Lillian Pettibone, 2034 N.E. 37th Ave., Portland, Ore. 97212

ANNUAL SCHOLARSHIPS AND GIFTS

- | | |
|---|--|
| Edward MacDowell Association | Neighborhood Music School, Los Angeles, Calif. |
| National Music Camp, Interlochen, Mich. | Community Music School, Inc., St. Louis, Mo. |
| Aspen Festival and School, Aspen, Colo. | |
| Friendship House, Washington, D.C. | |

NATIONAL AFFILIATIONS

- | | |
|--|--|
| National Federation of Music Clubs | National Ass'n of American Composers and Conductors |
| Music Teachers National Association | National Music Council |
| Music Educators National Conference | National Ass'n for Music Therapy (sustaining member) |
| National Association Schools of Music | National Guild of Community Music Schools (auxiliary member) |
| Professional Panhellenic Association | |
| The Council of Organization of Music for the Blind, Inc. | |

(please print) CHANGE OF ADDRESS—mail to N.E.O.

Name
Old Address
New Address

CHAPTER PRESIDENTS

ATLANTIC PROVINCE

- Collegiate:*
 BETA—New England Conservatory of Music, Boston, Mass. Rosalind Chua, 33 Gainsborough St., Boston, Mass. 02115
 MU—Brenau College, Gainesville, Nancy Pringle, Alpha Chi Omega House, Brenau College, Gainesville, Ga.
 PSI—Bucknell University, Lewisburg, Pa. Susan Kay Clark, Box W-437, Bucknell University, Lewisburg, Pa.
 MU UPSILON—Eastman School of Music, University of Rochester, N.Y. Joanne Richards, 424 University Ave., Rochester, N.Y. 14607
 PHI GAMMA—Peabody Conservatory of Music, Baltimore, Md. Fotini Filis Arnas, 81 Willow Spring Rd., Baltimore, Md. 21222
 PHI UPSILON—Boston University, Boston, 16, Mass. Leslie Saffer, 275 Babcock St., Boston, Mass.
 PHI PSI—Mary Washington College of the University of Virginia, Fredericksburg, Va. Agnes Erskine Bush, Box 2034, College Sta., Mary Wash. Coll., Fredericksburg, Va.
 PHI OMEGA—Westminster College, New Wilmington, Pa. Jeanne E. Sewall, 309 Mission Meade Dr., New Castle, Pa.
 EPSILON NU—West Virginia University, Morgantown, W.Va. Kathy Hardy, 299 Prospect St., Morgantown, W.Va.
 EPSILON UPSILON—Duquesne University Pittsburgh 19, Pa. Patricia Kelly, 12114 Garland Dr., Pittsburgh, Pa. 15235
 EPSILON PSI—Juilliard School of Music, New York 27, N.Y. Ann Rylands, 435 W. 119th St., Apt. 8-C, New York, N.Y. 10027
 ALPHA BETA—Hartt College of Music, Hartford, Conn. Betty Marion Lienthal, 12 Hill Farm Rd., Bloomfield, Conn.
 ALPHA ZETA—Radford College, Radford, Va.
 Edith Norma Foley, Box 343, Radford, Va. 24142
 ALPHA ETA—American University, Washington, D.C. Marsha Langston, 709 Skyline Court., N.E., Vienna, Va.
 ALPHA THETA—Pennsylvania State University, University Park, Pa. Margaret Shobert, 107 McKee Hall, University Park, Pa. 16802
 ALPHA XI—Women's College, University of North Carolina, Greensboro, N.C. Delores Ann Hahn, Box 3274 S. Reynolds, U.N.C., Greensboro, N.C.
 ALPHA UPSILON—Furman University, Greenville, So. Carolina. Harriet Dora Wilson, Box 28215, Furman U., Greenville, S.C.
Alumnae:
 ATLANTA—Verdery Rosenbusch Boyd (Mrs. S.), 2630 Habersham Rd., N.W., Atlanta, Ga. 30305
 BALTIMORE—Virginia Lee Stiegler (Mrs. Geo. H., Jr.), 6 Lake Circle, Ellicott City, Md. 21043
 BOSTON—Therese Mueller, 28 Indiana Terrace, Newton Upper Falls, Mass. 02164
 CONNECTICUT VALLEY—Charlotte Bagnall (Mrs. Jos. N.), 17 Beaverbrook Rd., Simsbury, Conn.
 MIAMI—Merle Carter Frost (Mrs. Jack), 628 N.W. 1st St., Miami 36, Fla.
 NEW YORK—Dorothy French (Mrs. George), 6 Country Rd., Mamaroneck, N.Y.
 PHILADELPHIA—Marguerite J. Watson (Mrs. A. E.), 671 Knox Rd., Wayne, Pa.
 PITTSBURGH—Mary Jane Harvey, 215 Lebanon Ave., Pittsburgh, Pa. 15228
 ROCHESTER—Gertrude B. Miller (Mrs. H. H.), 27 Del Rio Dr., Rochester, New York 14618
 WASHINGTON—Lola Faust (Mrs. J. E.), Apt. 209, 5425 Connecticut Ave. N.W., Washington D.C. 20015

GREAT LAKES PROVINCE

- Collegiate:*
 GAMMA—University of Michigan, Ann Arbor, Mich.—Mercej Jeanne Wilson, Box 364, Alice Lloyd, Ann Arbor, Mich.
 EPSILON—University of Toledo, Toledo, 6, Ohio. Susan E. Wachter, 3217 Island Ave., Toledo, Ohio 43614
 SIGMA—Northwestern University, Evanston, Ill. Sharon L. Novak, Zeta Tau Alpha, 721 University Place, Evanston, Ill.
 PHI—Mount Union College, Alliance, Ohio. Mary K. Falconer, 118 McMaster Hall, Mt. Union College, Alliance, Ohio 44601
 MU XI—American Conservatory of Music, Chicago 4, Ill. Laura Landon, 9545 S. Oakley, Chicago 43, Ill.
 MU PHI—Baldwin-Wallace College, Berea, Ohio. Judy Herlevi, Findley Hall, Baldwin-Wallace College, Berea, Ohio 44017
 PHI KAPPA—Wayne State University, Detroit, Mich. Sharron Freeman, 1121 W. Canfield, Apt. 1680, Detroit 2, Mich.
 PHI OMICRON—Cleveland Institute of Music, Cleveland, Ohio. Linda Wilson, 1686 Magnolia Dr., Cleveland 6, Ohio
 PHI SIGMA—De Paul University, Chicago, Ill. Leona Palilunas, 6901 W. Linden Dr., Palos Heights, Ill.
 EPSILON LAMBDA—Eastern Michigan University, Ypsilanti, Mich. Dorothea L. Schuler, 113 Jones E.M.U., Ypsilanti, Mich.
 EPSILON XI—University of Illinois, Urbana, Ill. Paulette Meyer, 1202 W. Nevada, Urbana, Ill. 62269
 ALPHA OMICRON—Roosevelt University, Chicago, Ill. Carol Peterson, 5316 S. Dorchester, Apt. 209, Chicago 15, Ill.
Alumnae:
 ALLIANCE—Alta Bartchy, 152 E. Milton, Alliance, Ohio
 ANN ARBOR—Carol Kenney (Mrs. Donald), 3645 Eli Rd., Ann Arbor, Mich.
 CENTRAL CHICAGO—Edith Aamodt, 701 N. Michigan, Chicago, Ill.
 CHICAGO—Charlotte Johnson (Mrs. A. G.), 2622 Lincolnwood Ave., Evanston, Ill.
 CLEVELAND—Rosaneil Schenk (Mrs. R. B.), 880 Nelaview Dr., Cleveland Hgts 12, Ohio
 CLEVELAND HEIGHTS—Mary Eileen Fogarty, 1089 E. 64th St., Cleveland 3, Ohio
 DETROIT—Victoria Balser (Mrs. W. E.), 1318 Hollywood, Grosse Point Woods, Mich. 48236
 EVANSTON-NORTH SHORE—Mildred Broemel (Mrs. Richard), 2513 Asbury, Evanston, Ill.
 MILWAUKEE—Alice D. Jones (Mrs. R. W.), 2422 E. Newberry Blvd., Milwaukee, Wis. 53211
 TOLEDO—Helen Baer (Mrs. Norman F.), 4048 Wetzler Rd., Toledo, Ohio 43612
 URBANA-CHAMPAIGN—Ann Wetzel (Mrs. Roger), 2022 Cynthia, Champaign, Ill.

EAST CENTRAL PROVINCE

Collegiate:

ZETA—DePauw University, Greencastle, Ind. Mary Lynn Landis, Delta Zeta, DePauw University, Greencastle, Ind. 46135
 KAPPA—Jordan College of Music, Butler University, Indianapolis, Ind. Margaret Krider, 809 W. Hampton, Indianapolis, Ind.
 MU PI—Ohio Wesleyan University, Delaware, Ohio, Gretchen Neal, Stuyvesant Hall, Delaware, Ohio 43015
 PHI THETA—Lindenwood College, St. Charles, Mo. Bonnie Zummo, Lindenwood College, St. Charles, Mo.
 EPSILON GAMMA—Belhaven College, Jackson, Miss. Tana Harwood, 2346 Clay St., Vicksburg, Miss.
 EPSILON ZETA—Hendrix College, Conway, Ark. Judy Carlee, Box 268, Hendrix College, Conway, Ark.
 EPSILON KAPPA—Southern Illinois University, Carbondale, Ill. Margaret Bartels, 418 W. Monroe, Apt. 8, Carbondale, Ill. 62906
 EPSILON OMICRON—Indiana University, Bloomington, Ind. Martha S. Johnson, Read Hall, I-310, Bloomington, Ind. 47406
 EPSILON TAU—Washington University, St. Louis 5, Mo. Leah Littlefield, Lee Hall, Washington U., 6515 Wydown, St. Louis, Mo. 63105
 ALPHA ALPHA—The College-Conservatory of Music, Cincinnati, Ohio. Alice Daniels, Conservatory of Music, Cincinnati 19, Ohio
 ALPHA GAMMA—University of Southern Mississippi, Hattiesburg, Miss., Sylvia Teasley, 327 N. 25th St., Hattiesburg, Miss.
 ALPHA KAPPA—Conservatory of Music of Uni-

versity of Kansas City, Kansas City, Mo. Janet Johnson, 4525 Walnut, Kansas City, Mo. 64111
 ALPHA MU—Southwest Missouri State College, Springfield, Mo. Marilyn Stephens Farmer, 937 E. Lombard, Springfield, Mo. 65804

Alumnae:

BLOOMINGTON—Eleanor Miller (Mrs. Robert A.), 1316 Nancy, Bloomington, Ind.
 CINCINNATI—Martha Seifried, 3117 Portsmouth, Cincinnati, Ohio 45208
 COLUMBIA—Marian Bowker Davidson (Mrs. M.), 307 W. Parkway Dr., Columbia, Mo. 65201
 COLUMBUS—Dorothy Jewett, 5360 Linworth Rd., Worthington, Ohio
 DAYTON—Florence Houpt (Mrs. K. E.), 341 Aberdeen Ave., Dayton 6, Ohio.
 EVANSVILLE—Lorene Kirchgessner (Mrs. James), 105 Riverview Dr., Henderson, Ky. 42420
 INDIANAPOLIS—Wheeler, Wanda S. (Mrs. J. R.), 5708 Carvel, Indianapolis 20, Ind.
 JACKSON—Martha Jo White (Mrs. S. H. Jr.), 5901 Medallion Dr., Jackson, Miss.
 KANSAS CITY—Meta Ann White (Mrs. P. A. Jr.), 412 E. 108th Terr., Kansas City, Mo. 64131
 KANSAS CITY EVENING—Jo Ellen Baucke (Mrs. T. C.), 9613 E. 67th Terr., Raytown, Mo.
 ST. LOUIS—Betty Dodd Moore (Mrs. T. D.), 12532 Starspur, Creve Coeur, Mo. 63141
 ST. LOUIS COUNTY—Ann Nissing (Mrs. B. J.), 8505 Grantshire Lane, Affton, Mo. 63123

NORTH CENTRAL PROVINCE

Collegiate:

OMEGA—Drake University, Des Moines, Iowa. Merrill Watkins, 1414 30th St., Des Moines, Iowa 50311
 MU ALPHA—Simpson College, Indianola, Iowa. Grace Blaschke, 235 Kresge Hall, Simpson College, Indianola, Iowa.
 MU GAMMA—University of Nebraska, Lincoln, Neb. Lois Abbuhl, 1246 N. 46th, Lincoln, Neb.
 MU EPSILON—Minneapolis College-MacPhail School of Music, Minneapolis, Minn. Sharon Ann Walter, 1536 La Salle, Minneapolis, Minn.
 MU TAU—University of South Dakota, Vermillion, S.D. Elna L. Juffer, Rm. 305, Burgess Hall, U.S.D., Vermillion, S.D. 57069
 MU PSI—Coe College, Cedar Rapids, Iowa. Ellen Nuechterlein, Voorhees Hall, Coe College, Cedar Rapids, Iowa.
 PHI ZETA—Morningside College, Sioux City,

Iowa. Jeraldine Lee Sloan, 2312 S. Lemon, Sioux City, Iowa 51106
 PHI IOTA—Concordia College, Moorhead, Minn. Phyllis Sorensen, 1002 S. 7th St., Moorhead, Minn.

Alumnae:

CEDAR RAPIDS—Collette Frederick (Mrs. Leo), Mt. Vernon, Iowa.
 DES MOINES—Miriam Piper Ryan (Mrs. Earl), 2939 Cottage Grove, Des Moines, Iowa.
 FARGO—Eileen Rudd (Mrs. M. E.), Rt. #2, River Oaks, Moorhead, Minn. 56560
 LINCOLN—Joan Marshall Reist (Mrs. Wesley), 801 Driftwood Dr., Lincoln, Neb. 68510
 MINNEAPOLIS—Marilyn Norman (Mrs. C. W.), 5713 Deerwood Dr., Hopkins, Minn.
 RICHFIELD—Virginia Shaw (Mrs. Earle), 5340 Fremont Ave. S., Minneapolis, Minn. 55419
 SIOUX CITY—Karen Wolff (Mrs. Jack), 1830 Whitehouse, Sioux City, Iowa.

SOUTH CENTRAL PROVINCE

Collegiate:

XI—University of Kansas, Lawrence, Kan. Ineta Williams, 1506 Lilac Lane, Lawrence, Kan.
 MU THETA—University of Texas, Austin, Tex. Sharon Mason, Blanton 119, Austin 5, Tex.
 MU KAPPA—University of Oklahoma, Norman, Okla. Sharon Quaid, Brooks House, Norman, Okla.
 MU MU—Kansas State College, Manhattan, Kan. Judy Poppe, 1436 Laramie, Manhattan, Kan.
 MU RHO—Lamont School of Music at the University of Denver, Colo. Frances Ann Scott, 2280 S. Race #624, Denver, Colo. 80210

MU CHI—Southern Methodist University, Dallas, Texas. Linda Kay Geismar, Box 784, S.M.U., Dallas, Texas.
 PHI EPSILON—College of Emporia, Emporia, Kan. Kathryn Marie Asbury, Music Dept., College of Emporia, Emporia, Kan. 66801
 PHI XI—Baylor University, Waco, Texas. Sylvia Crawford, 427 Alexander, Waco, Texas.
 PHI PI—Wichita State University, Wichita, Kan. Roberta Brown, 1525 Fairmount, Wichita, Kan.
 PHI TAU—North Texas State College, Denton, Texas. Carla Faye Potter, Box 8384 NTSU, Denton, Texas.

EPSILON EPSILON—Texas Christian University, Fort Worth, Texas. Stuart Smith, P.O. Box 30758, TCU Station, Fort Worth, Texas 76129
 EPSILON MU—University of Utah, Salt Lake City, Utah. Linda Brown, 33 S. Wolcott St., Salt Lake City, Utah 84102
 EPSILON PI—Texas Technology College, Lubbock, Texas. Tommie Allen, 357 Weeks Hall, Lubbock, Texas 79406
 EPSILON PHI—Friends University, Wichita, Kansas. Ada Jerree Pitts, Women's Residence Hall, Friends Univ., Wichita 13, Kansas.
 ALPHA IOTA—Midwestern University, Wichita Falls, Texas. Jo Lynn Waller, Midwestern University, Wichita Falls, Texas.
 ALPHA NU—West Texas State College, Canyon, Texas. Dorothy Ann Higdon, Box 56, Canyon, Texas. 79015
 ALPHA PI—Southwest Texas State, San Marcos, Texas. Sherry Ayers Moore, 316 Vista, Apt. 3, San Marcos, Texas 78666
 ALPHA RHO—Phillips University, Enid, Okla. Nancy Jane Kyle, 325 Lakeview Dr., Enid, Okla.
 ALPHA SIGMA—Abilene Christian College, Abi-

lene, Texas. Carolyn Knight, 3133 Columbia, Abilene, Texas 79605
 ALPHA CHI—Southwestern College, Winfield, Kansas. Rachel York, 1804 Warren, Winfield, Kansas.

Alumnae:

AUSTIN—Alma Jean Ward (Mrs. F.), 1420 Red Bud Trail, Austin, Texas.
 DALLAS—Cynthia Wadley (Mrs. D.), 9131 Larchwood, Dallas, Texas.
 DENVER—Margaret F. Dougherty (Mrs. H. L.), 8240 Turnpike Dr., Westminster, Colo.
 FORT WORTH—Jeanette Stearns Keim (Mrs. Arthur R.), 1324 Washington, Ft. Worth, Texas.
 OKLAHOMA CITY—Jennie Means Cleaver (Mrs. W. R.), 2709 N.W. 56, Oklahoma City, Okla. 73112.
 SALT LAKE CITY—Verkler, Carolyn Gibson (Mrs. M. L.), 50 W. 1300 South, Bountiful, Utah.
 TULSA—Joanne Carlson (Mrs. J. H.), 5415 E. 39th St., Tulsa, Okla.
 WICHITA—Lois B. Hubbard (Mrs. Max), 1010 Emerson, Wichita, Kansas.

PACIFIC NORTHWEST PROVINCE

Collegiate:

NU—University of Oregon, Eugene, Oregon. Beverly Maddy, 945 E. 19th, Apt. 5, Eugene, Oregon.
 TAU—University of Washington, Seattle 5, Washington. Jane Evelyn Ayer, 4545 17th N.E., Seattle 5, Wash.
 MU BETA—Washington State University, Pullman, Washington. Geraldine Keller Cummins, Box 355 C.S., Pullman, Wash. 99163
 MU ZETA—Whitman College, Walla Walla, Washington. Kathryn Marcia Hall, Box 349, Whitman College, Walla Walla, Washington.
 PHI LAMBDA—Willamette University, Salem, Oregon. Charlotte Castillo, Lee House, Willamette Univ., Salem, Ore.
 EPSILON DELTA—Lewis and Clark College, Portland, Oregon. Jodyne Lucile Eastwood, Ruth Odell Hall, Lewis & Clark College, Portland 19, Ore.
 EPSILON THETA—Linfield College, McMinnville, Oregon. Mildred Ann Johnson, Box 652, Linfield College, McMinnville, Ore. 97129
 EPSILON IOTA—Eastern Washington College of Education, Cheney, Washington. Mary L. Krause, E. 12105 22nd, Spokane, Wash. 99206
 EPSILON RHO—Montana State University, Mis-

soula, Montana. Mary L. Nelson, 501 University, Missoula, Mont.
 EPSILON SIGMA—Pacific Lutheran University, Parkland, Washington. Joann Denny, South B-15, P.L.U., Tacoma, Wash.
 ALPHA LAMBDA—Portland State College, Portland, Oregon. Mary Flora Ross, 1536 S.E. 35th Ave. Portland, Ore.
 ALPHA PHI—Marylhurst College, Marylhurst, Oregon. Judy Hood, Marylhurst College, Marylhurst, Oregon.

Alumnae:

EUGENE—Marjorie Carlson Ogle (Mrs. R. E.), 192 Fetlock Ct., Eugene, Ore.
 PORTLAND—Jean Crites Compton (Mrs. David R.), 6445 S.W. Park Hill Way, Portland, Ore. 97201
 SALEM—Gladys Coe (Mrs. Curtis), 1980 Chemawa Rd. N.E., Salem, Oregon 97303.
 SEATTLE—Rachel Welke (Mrs. W. C.), 5607 16th Ave. N.E., Seattle 5, Wash.
 SPOKANE—Carmen Hagman (Mrs. Robert), Box 62 A., Rt. 1, Spokane, Wash.
 TACOMA—Carolyn Hoover (Mrs. Lon A.), 816 N. Stadium Way, Tacoma 3, Wash.

PACIFIC SOUTHWEST PROVINCE

Collegiate:

MU ETA—University of the Pacific, Stockton, Calif. Ruth Annette Milbrandt, Covell Hall, Univ. of Pacific, Stockton, Calif.
 MU NU—University of Southern California, Los Angeles, Calif. Linda Matthews, 915 W. 30th, Los Angeles 7, Calif.
 PHI MU—San Jose State College, San Jose, Calif. Maureen Fay Schino, 1520 De Anza Way, San Jose, Calif. 95125
 PHI NU—University of California at Los Angeles, Los Angeles, Calif. Paula Todd, 4056 McLaughlin, Los Angeles 66, Calif.
 PHI CHI—Fresno State College, Fresno, Calif. Judith A. Romero, Box 105B, Baker Hall, F.S.C., Fresno, Calif.
 EPSILON ETA—George Pepperdine College, Los Angeles, Calif. Dianne Brooks, 13243 S. McKinley, Los Angeles, Calif. 90059.

EPSILON OMEGA—San Francisco State College, San Francisco, California. Judith Monson, 2600 Noriega, San Francisco, Calif. 94122.
 ALPHA DELTA—Sacramento State College, Sacramento, Calif. Karen Arnesen, 2684 Cottage Way, Apt. 94, Sacramento, Calif.
 ALPHA EPSILON—College of the Holy Names, Oakland, Calif. Maria Fatima daRozza, 3426 Dimond, Oakland, Calif.

Alumnae:

ALBUQUERQUE—Bess Cury Redman, 2108 Gold Ave. S.E., Albuquerque, N.M.
 BERKELEY—Lucile Lundberg (Mrs. O.), 1423 Walnut St., Berkeley, Calif.
 BEYERLY HILLS—Joan Meggett, 4401 Griffin Ave., Los Angeles, Calif. 90031
 FRESNO—Olga Quercia, 5438 E. McKenzie, Fresno, Calif.

FULLERTON—Beverly Runkle Benson, 623 Heatherstone Dr., Orange, California.
 LONG BEACH—Helen Johnstone (Mrs. Ralph), 5026 Knoxville, Lakewood, Calif.
 LOS ANGELES—Helen Conoway Wiedel (Mrs. Arthur J.), 8759 S. LaSalle Ave., Los Angeles 47, Calif.
 PALO ALTO—Helen Price (Mrs. G. W.), 1179 Orilla Ct., Los Altos, Calif.
 PASADENA—Grace Holden (Mrs. M.), 1085 East Mariposa St., Altadena, Calif. 91001
 RIVERSIDE—Sylvia Newton Shepherd (Mrs. R. Ernest), 271 Barrett Rd., Riverside, California 92507.

SACRAMENTO—Marjorie Lawrence (Mrs. C. K.), 3511 Curtis Park Dr., Sacramento, Calif. 95818
 SAN DIEGO—Jeanne Roodhouse (Mrs. Ben), 5035 San Aquario Dr., San Diego 9, Calif.
 SAN FERNANDO VALLEY—Barbara A. Gribble (Mrs. Robt.), 13623 Morrison St., Sherman Oaks, Calif. 91403
 SAN FRANCISCO—June Weybright Reeder (Mrs. Leland R.), 109 Skyview Way, San Francisco, Calif. 94131.
 SAN JOSE—Ina Mae S. Holt (Mrs. F. E.), 2256 Sunny Vista Dr., San Jose, Calif. 95128.
 STOCKTON—Faye Lowes (Mrs. Gary), 2914 Delaware Ave., Stockton, Calif.

INTERNATIONAL

Collegiate:

ALPHA TAU—Philippine Women's University, Manila, P.I. Jean M. Serafica, c/o College of

Music & Fine Arts, Philippine Women's Univ., Taft Ave., Manila, P.I.

Music Therapy—Salem

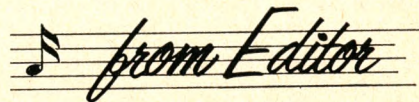
(Continued from page 54)

door to much more concentrated activity in this field.

Both Dean Geist and Professor Brennen feel that the program has the uniquely advantageous position of having the Hospital and other state institutions in close proximity with Willamette's course of study, thus facilitating ready observation and experimentation. Willamette is the only school in the Northwest where Music Therapy is offered as a major, and prospects for rapid development of a superior program at this institution, worthy of national recognition, are very bright.

Dean Geist believes that "the need for trained music therapists exceeds the number of candidates available," and feels that the College of Music at Willamette University has embarked on a challenging program.

We volunteers—collegiates, alumnae and patrons—are proud to be an integral part of this program.



It was wonderful meeting so many of you at National Convention in Lincoln. Remember, the chapter historian is a reporter to TRIANGLE. I look forward to material and suggestions from her.

Also note new deadlines given on Calendar pages. *Tempo* material will appear in September issue, deadline in mid-June. Only one chapter Newsletter will be used during the year with a maximum of 300 words, please.

I have a new address. Please use 220 Greenstone Dr., Reno, Nev. 89503.

Haworth Bequest

(Continued from page 13)

Evelyn Russell from *Chicago*, Edith Aamodt and Miriam Knauf from *Central Chicago*, Sally Sheirer from *Evans-ton-North Shore* and Elizabeth Wy-sor, contralto, from the same chapter.

1964-65 Collegiate Chapter Calendar

N.E.O. Address: 1139 N. Ridgewood Dr., Wichita, Kansas 67208

National Editor Address: 220 Greenstone Dr., Reno, Nevada 89503

SEPTEMBER—OCTOBER 1964

Order supplies replacements Form #3.
 Return Fall Report of changes of officers, addresses and members.
 Hear delegate's report of National Convention.
 Urge magazine subscriptions.

NOVEMBER 13

FOUNDERS DAY. Special observance.
 Send voluntary contributions (61¢ per member) to N.E.O. Form #3.
 Urge magazine subscriptions.

DECEMBER 1

Deadline: National taxes due N.E.O. Send check and 2 copies Form #2 (National Tax Payment) and send check for TRIANGLE subscriptions, Form #1.
DUE: President's report of chapter activities and plans.
 Set Work Party date with District Director.
 Remind: Original Composition Contest.

JANUARY—FEBRUARY 1965

First month of second semester, or no later than Feb. 28, 1965:
 Election of new officers.
 Work Party with installation of new officers, supervision of District Director.
Due from Corresp. Sec'y: new officers list to N.E.O. on required forms, 10 copies.

APRIL 1

Due: President's report of chapter's spring activities.

MAY 1

Due from Vice-President and Treasurer: Initiates' record sheets etc. for spring initiation to N.E.O.
Due from Faculty Adviser: Chapter grade averages M.M.K. Award and E.M. Honor Award to National Chairmen. Use form.
Chapter: Select outstanding senior. Send name to Province Governor. Use form. Plan suitable presentation of Senior Achievement Award check.
Due from Treasurer: Before May 31, send chapter contributions for National philanthropies to MU PHI EPSILON Memorial Foundation Treasurer.
Due from Magazine Chairman: Before May 31, send final magazine renewals and subscriptions to National Chairman.

JUNE 1

Deadline: for sending manuscripts for Original Composition Contest to National 6th Vice-President.

TRIANGLE: Historians send material to National Editor, address, top of page.

Deadlines:

September 10 for December issue
 November 1 for February issue
 February 1 for May issue
 June 15 for September issue

OPUS material is sent to Opus Editor, listed under National Chairmen.

SUBSCRIBE MAGAZINES

Send change of name and/or address to N.E.O. immediately. Use form, page 58.

1964-65 Alumnae Chapter Calendar

N.E.O. Address: 1139 N. Ridgewood Dr., Wichita, Kansas 67208
 National Editor Address: 220 Greenstone Dr., Reno, Nevada 89503

SEPTEMBER—OCTOBER 1964

Order supplies for year, Form #3.
 Return Fall Report of changes of officers, addresses and members.
 Hear delegate's report of National Convention.
 Urge magazine subscriptions.

NOVEMBER 13

FOUNDERS DAY. Special observance. Send voluntary contributions (61¢ per member) to N.E.O. Form #3.
 Urge magazine subscriptions.

DECEMBER 1

Due: President's report of chapter activities and plans.
 Remind: Original Composition Contest.

JANUARY—FEBRUARY 1965

Deadline: January 15, National taxes due N.E.O., 2 copies Forms #1 and #2.
 Renew TRIANGLE subscriptions on same form.
 February: election of new officers.

MARCH 1

Deadline: Return to N.E.O. new officers list, 10 copies, use forms.

APRIL 1

Due: President's report of chapter's spring activities.

SUBSCRIBE MAGAZINES

Send change of name and/or address to N.E.O. immediately. Use form, page 58.

MAY

Due from Treasurer: Before May 31, send chapter contributions for National philanthropies to MU PHI EPSILON Memorial Foundation Treasurer.

Due from Magazine Chairman: Before May 31, send final magazine renewals and subscriptions to National Chairman.

JUNE 1

Deadline: for sending manuscripts for Original Composition Contest to National 6th Vice-President.

TRIANGLE: Historians send material to National Editor, address, top of page.

Deadlines:

September 10 for December issue
 November 1 for February issue
 February 1 for May issue
 June 15 for September issue

METRONOME material is sent to Metro-nome Editor, listed under National Chairmen.

**SUPPORT FRIENDSHIP CORNER
 CONTRIBUTE TO M Φ E
 MEMORIAL FOUNDATION**

Triumph of the Jewelers Art

**YOUR BADGE —
 a triumph of skilled
 and highly trained
 Balfour craftsmen
 is a steadfast and
 dynamic symbol in
 a changing world.**



**WEAR YOUR PIN WITH PRIDE AS
 IT REFLECTS THE RICH TRADITIONS
 OF YOUR SORORITY LIFE**

Recognition pin, 10K Gold.....	\$ 1.75
Pledge pin, sterling silver.....	1.00
Plain badge, flat lyre.....	5.75
Plain badge, raised lyre.....	7.00
Close set pearl badge, raised lyre.....	12.25
Crown set pearl badge, raised lyre.....	18.75

10% Federal Tax and any State or City Taxes in addition to prices quoted.

Insignia listed above is carried in stock for immediate shipment. Badges are carried in stock in yellow gold.

Write for complete insignia price list

OFFICIAL JEWELER TO MU PHI EPSILON



L. G. Balfour Company
 ATTLEBORO MASSACHUSETTS

IN CANADA L. G. BALFOUR COMPANY, LTD. MONTREAL AND TORONTO

Mrs. Van Fiser
1139 North Ridgewood Drive
Wichita, Kansas 67208
RETURN POSTAGE
GUARANTEED



1903 Mu Phi Epsilon 1963-4