

v. 60 # 1

the  
**TRIANGLE**  
of  
**MU PHI EPSILON**



**SEPTEMBER 1965**

# THE MU PHI EPSILON CREED

I BELIEVE IN MUSIC,  
the noblest of all the arts,  
a source of much that is  
good, just, and beautiful;  
IN FRIENDSHIP,  
marked by love, kindness, and sincerity;  
AND IN HARMONY,  
the essence of a true and happy life.  
I BELIEVE IN THE SACRED BOND OF SISTERHOOD,  
loyal, generous, and self-sacrificing,  
and its strength shall ever guide me  
in the path that leads upward  
toward the stars.

Ruth Jane Kirby, Omega

THE TRIANGLE of Mu Phi Epsilon, international professional music sorority, is published quarterly, in September, December, February, and May. George Banta Company Inc., is official printer at Curtis Reed Plaza, Menasha, Wisconsin. The subscription price is \$1.50 a year, single copies, 40 cents. All copy is to be sent to the Editor, Pearl Allison Peterson, 220 Greenstone Dr., Reno, Nevada 89503, observing deadlines which are June 15, September 10, November 1, and February 1. Business Correspondence and Subscriptions to be sent to National Executive Office, 1139 N. Ridgewood Drive, Wichita, Kansas 67208. Second class postage paid at Menasha, Wisconsin. Printed in the United States of America.

POSTMASTER: Send all changes of address to 1139 N. Ridgewood Drive, Wichita, Kansas 67208.

# The Triangle

SEPTEMBER • 1965  
VOLUME 60 • NUMBER 1

## OF MU PHI EPSILON

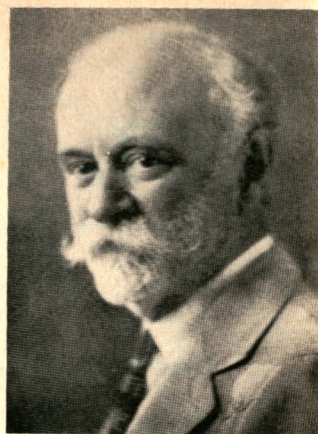
### Contents . . .

	PAGE
Message for Founders Day . . . . . <i>Janet A. Wilkie</i>	2
Mu Phi Epsilon Award Winners for 1964-65 . . . . .	3
Collegiate Tempo 1964-1965 . . . . .	5
<i>Tau</i> Honored . . . . .	6
Welcome to New Collegiate Chapters . . . . .	7
<i>Recognition</i> —Patricia Wise—Sandra Walberg . . . . .	10
Here and There . . . . .	13
<i>Recognition</i> —Asuncion Deiparine . . . . .	15
Alumnæ Tempo 1964-1965 . . . . .	17
<i>Toledo Alumnæ</i> , Golden Anniversary . . . . .	18
Welcome to New Alumnæ Chapters . . . . .	19
<i>Recognition</i> —Bertha Krehbiel . . . . .	22
<i>Recognition</i> —Marie Rodkey . . . . .	24
<i>Recognition</i> —Diane Bish . . . . .	27
Patron Profile—Mrs. Stanley Partridge . . . . .	29
". . . our inner shrine is ever bright . . ." . . . . .	31
Friendship Corner . . . . .	32
Beauty of Oregon Captivates Council . . . . .	34
For Music and Youth, MΦE Memorial Foundation . . . . .	35
Board of Directors Meets in Portland . . . . .	36
Sterling Staff Concert Series, Instruction Sheet . . . . .	38
Sterling Staff Concert Series, Repertoire Requirements . . . . .	40
Chapters Sponsor SSCS Artists . . . . .	43
Honorary Board of Directors . . . . .	44
Book Shelf . . . . . <i>Trudi Sorensen</i>	51
Record Review . . . . . <i>Margaret Claire Motter</i>	53
Awards, Contests, Competitions . . . . . <i>Viola Moen Anderson</i>	54
Directory . . . . .	56
Collegiate Calendar . . . . .	63
Alumnæ Calendar . . . . .	64

NATIONAL EDITOR—PEARL ALLISON PETERSON



ELIZABETH  
MATHIAS FUQUA



DR. WINTHROP S.  
STERLING

## Message for Founders Day

Sixty-two years ago on November 13, 1903, Dr. Winthrop S. Sterling and Elizabeth Mathias founded MU PHI EPSILON with but eight members in *Alpha* Chapter.

We warmly welcome the nearly 1,000 new initiates of the past year and the six new chapters who for the first time in 1965 join in our tradition of commemorating Founders Day.

With these newest sisters as well as our oldest let us honor the memories of our beloved Founders. Let us again renew the bonds of friendship and the vows which we all have shared through all the years. Let us rededicate ourselves to uphold those same standards, and to work together ever more effectively for that same advancement of music in America and throughout the world which our Founders envisioned as the basis of our sorority.

JANET A. WILKIE  
National President

### FOUNDERS DAY—1903

one chapter  
eight members

### FOUNDERS DAY—1965

96 collegiate chapters  
75 alumnae chapters  
more than 26,000 initiated members

## Mu Phi Epsilon Award Winners for 1964-65 announced by National Council

### Sterling Achievement Award

The winner of the Sterling Achievement Award receives \$50, a medal, and a certificate. She is chosen by National Council as the most outstanding senior member of the year. This year tie awards were given.

#### CAREN DEE GOODIN

*Epsilon Omicron*  
University of Indiana  
East Central Province

Caren Dee Goodin: major, piano . . . GPA, 3.6 . . . Caren was initiated by *Kappa*, Butler University, later affiliating with *Epsilon Omicron*, Indiana University . . . *Activities*: Performer with Butler Orchestra, 1958, 1962 . . . Winner of Little Symphony contest . . . Performer, NFMC Convention, 1960, 1964 . . . Recital debut at Indianapolis, 1965 . . . Chapter vice president . . . Representative to NFMC Convention, 1964 . . . Winner, District #7 Song Contest, 1965 . . . At Oberlin: 7th in freshman class, performer and choreographer for Modern Dance Club . . . At Butler: Winner MΦE Sophomore and MΦE Patron Awards . . . At Indiana: Indianapolis Matinee Musicale Scholarship, Dean's List, Pi Kappa Lambda.

#### ANN RISHELL

*Mu Upsilon*  
Eastman School of Music  
Atlantic Province

Ann Rishell: major, double bass, piano . . . GPA, 3.66 . . . *Activities*: Rochester Philharmonic Orchestra, four years, Rochester Civic Orchestra, one year, Eastman Philharmonic, three years. Double bass concerto with Civic Orchestra . . . Interlochen, four summers . . . Tanglewood . . . Chautauqua accompanist . . . Chapter rush and social chairman, accompanist and soloist for chapter programs . . . Rochester National Scholarship, four years; George Eastman Scholarship, four years . . . Performer's Certificate, with diploma.



The outstanding nominee in each of the other provinces is traditionally given

### *Honorable Mention*

Great Lakes Province—Ellen Coleman, *Mu Phi*, Baldwin Wallace College

North Central Province—Gwen Waldo, *Mu Gamma*, U. of Nebraska

South Central Province—Tommie Louise Allen, *Epsilon Pi*, Texas Technological College

Pacific Northwest Province—Fay Gonsior, *Epsilon Rho*, Montana State U.

Pacific Southwest Province—Carol Oaks, *Phi Chi*, Fresno State College

### *Collegiate Chapter Awards*

**MARIE MORRISEY KEITH CHAPTER SCHOLARSHIP AWARD**—\$100 for the greatest improvement in chapter scholastic average over previous year.

*winner:* Alpha Nu, West Texas State College

**ELIZABETH MATHIAS HONOR AWARDS**—\$50 each for having highest scholastic averages for the year.

*winner:* Epsilon Nu, West Virginia U.; Mu Upsilon, Eastman School of Music; Phi Iota, Concordia College.

**COLLEGIATE CHAPTER SERVICE AWARD**—\$25 and a certificate.

*winner:* Alpha Beta, Hartt College of Music, Atlantic Province

*honorable mention certificates:* Phi, Great Lakes; Alpha Alpha, East Central;

Phi Iota, North Central; Phi Tau, South Central; Alpha Phi, Pacific Northwest; Phi Chi, Pacific Southwest; Alpha Tau, International.

### *Alumnae Awards*

**ALUMNÆ CHAPTER SERVICE AWARD**—\$25 and a certificate.

*winner:* St. Louis County Alumnae, East Central Province

*honorable mention certificates:* Washington, D.C. Alumnae, Atlantic; Toledo Alumnae, East Central; Minneapolis Alumnae, North Central; Salt Lake City Alumnae, South Central; Spokane Alumnae, Pacific Northwest; Berkeley Alumnae, Pacific Southwest.

**CIRCLE OF WINNERS AWARD**—\$25 and a certificate for being the most outstanding chapter among previous winners of the Alumnae Chapter Service Award.

*winner:* Wichita Alumnae, South Central Province

**ORAH ASHLEY LAMKE DISTINGUISHED ALUMNA AWARD**—This Award, created at the National Convention in 1964, was given posthumously to Ava Comin Case, who passed away in December 1964.

# Collegiate Tempo 1964-1965

## Scholarship—Honors Chapter—Campus Performances Service

*Phi Pi*, Wichita State U. working in Music Therapy at Institute of Logopedics under direction of patron, MRS. WELSBACHER, music therapist



## Tau Honored by Seattle Alumnae on 50th Anniversary

The role of MU PHI EPSILON in the musical life of Seattle was illustrated through an historical exhibit displayed at the Golden Anniversary Tea celebrating the May 1915, installation of *Tau* Chapter at the University of Washington.

Highlights of the exhibit—which contained souvenirs, extracts from scrapbooks, programs and photographs—were: a photostat of the University of Washington "Daily" of May 13, 1915, describing the installation ceremony held in the "president's residence;" snapshots and programs of charter members (wherein a baritone assisted at one of the senior recitals by singing *Pluck This Little Flower*); a portrait of Frances Tanner, '24, in the beaded chiffon "chemise" she designed and made to wear for her appearance as a performing delegate to the National Convention in Minneapolis in 1924; press clippings of Byrd Elliot's command performance at the White House before President and Mrs. F. D. Roosevelt, and clippings of Janet Adams' (Wilkie) election to the presidency of *Tau* Chapter in 1935; a program of a performance by the U of W Madrigal Singers conducted by the group's founder, faculty member Helen Hall, *Tau*; pictures and press clippings of the National Convention in Seattle in 1950 showing Eleanor Hale Wilson as chairman; press notices of Amy Worth's compositions and

honors bestowed for *The Blessed Damozel*, the latter featuring Rose Bampton in the first performance; programs of retrospective concerts in *Seattle* chapter's Artist Program Series spotlighting works of U of W composers George Frederick McKay, John Verrall, James Beale, Gerald Kechley and Henry Leland Clarke.

Musical entertainment at the tea was provided by the U of W Madrigal Singers conducted by Professor Kechley. (The performance had special meaning to Prof. Helen Hall, the group's founder, watching Kechley, her former student and member of the Madrigal Singers under her direction.)

Charter members in the reception line were Etha Cook Clark '18, Emma Schmitz Hartman '15, Mary Wright McCauley '16, and Eilene French Rise-gari '16. Receiving with them were Rachel Swarner Welke, president of *Seattle Alumnae* chapter, Beatrice Kauffman Higman, president-elect, and Janet Lavers, president of *Tau* Chapter.

Former national officers Louise Benton Oliver, one of MU PHI EPSILON's early "Province Presidents", and Eleanor Hale Wilson, past National President, were honored as pourers, as were Kathleen Munro, professor emeritus of the U of W School of Music, and Professor Edith Woodcock, faculty adviser to *Tau* Chapter.

—Jewelyn Carvalho Impett

93rd

Alpha Psi

Whitworth College  
Spokane, Wash.  
February 28, 1965



## Welcome to New Collegiate Chapters

94th

Alpha Omega

Stephen F. Austin State  
College, Nacogdoches, Tex.  
April 4, 1965



Beta Alpha

95th

California State College  
at Fullerton, Calif.  
April 10, 1965



Beta Beta

Jacksonville University  
Jacksonville, Fla.  
April 20, 1965

96th



## Scholarships and Honors

**ALPHA NU—West Texas State U:** Our president, Marilyn Mitchell, won the Amarillo Symphony Young Artist Audition and sang with the Symphony in February . . . Nancy Barker received the Kathlyn Hines Scholar-Award as the most outstanding freshman woman in music . . . Virginia Ransom has a graduate assistantship in Opera Workshop at SMU, where she will be doing graduate work on her master's degree in voice . . . Jo Hendricks is going to University of Houston as a graduate assistant to get her master's degree in percussion . . . Noreen Putnam is a graduate assistant in piano at WT this fall. . . . Joan Wallace was a teaching assistant in voice at WT this last spring . . . Mila Beth Gibson received the Outstanding Senior Recital Performance Award at the Awards Assembly and Outstanding Student Recital Performance Awards were given to Jean Gray, Marilyn Mitchell, Joan Wallace, Jerilyn Laramore and Nancy Barker . . . Dorothy Higdon received the Sterling Achievement nomination, Sandy Snelling, the Pauline Brigham Award . . . Dorothy was nominated by the Canyon American Association of University Women and chosen as one of the Outstanding Young Women in America. . . . Noreen Putnam and Pat Tucker were elected to *Who's Who in American Colleges and Universities*. . . . Another honor we are proud of has been received by our adviser, Miss Mary Ruth McCulley, who has been appointed as music consultant to the Juilliard Research Project for 1965-66. In this capacity she will work with two other

consultants and six school music directors in developing an expanded curriculum for elementary music.

**PHI UPSILON—Boston U:** Chosen as one of twenty young violinists in the country to study at Tanglewood was Erica Brown.

**EPSILON IOTA—Eastern Washington State:** Past president Mary Lee Crouse, member of Golden Circle, scholarship honor society, tapped current president Judith Powell, which seems to have become a habit with MΦE chapter presidents the last few years. Carol Biernback was also tapped and Elin Hamalainen was elected to Spurs.

**EPSILON NU—West Virginia U:** Our president, Alice Manning, was tapped by Mortar Board, and the junior honor society, Chimes, tapped Susan Brown and Tona Renforth.

**EPSILON XI—U. of Illinois:** Barbara Skully, harp, won the annual scholarship award of \$200 given by the *Chicago Alumnæ*. She was presented at a tea on April 25. . . . Karene Vallandigham, flute, earned the honor of "Outstanding Woodwind Instrument Performer" for fall semester, winning by vote of the wind division faculty.

**PHI PSI—Mary Washington College, U. of Virginia:** Maureen Jagoe, president, was winner of the chapter's vocal scholarship. Mortar Board tapped Judith Wells. . . . Nancy Hamilton won the Organ Guild competition and received the chapter's outstanding senior musician award. . . . Agnes Bush was voted outstanding senior member; was on the Dean's List. She and Donna Drake were elected president and vice president of the Chorus.

**PHI PI—Wichita State U:** In the May Day Festivities Mortar Board tapped Roberta Brown, Mary Duerksen, Kathy Hall, Karen Johnson Hamilton and Besse Welsh for the year 1964-5, followed by Cynthia Nestor and Linda Higgins. Spurs tapped Barbara Bunting and Kathy Hofer. . . . Gwin Cassity won the Naftzer Young Artist Award for Kansas and will, as a result, appear with the Wichita Symphony next season. She is a pianist. Susan Hollowell won the MU PHI EPSILON scholarship in the vocalists' division. Carol Bowling won the Sigma Alpha Iota Scholarship in the pianists' division. Besse Welsh, last year's Aspen Scholarship winner, was winner of the chapter Achievement Award. . . . Graduating *cum laude* with a bachelor of music education degree were Roberta Brown, Gwin Cassity, Mary Duerksen, Kay Gardner, Carolyn Howe and Cyndee Shank Ragland. Gwin performed as piano soloist on the Commencement program.

**KAPPA—Jordan College of Music, Butler:** Marcia Dickerson and Carolyn Crane were elected to Kappa Delta Pi, education honorary.

**EPSILON OMEGA—San Francisco State:** For the fourth consecutive year a member of this chapter has won the *Palo Alto Alumnæ* Scholarship in competition with three other Bay area collegiate chapters. The winner was Chris Heilbron, and Helen Dilworth was the recipient of a scholarship given by two *Palo Alto* members. Eleanor Biondi won a scholarship offered by Sigma Alpha Iota. Two of the larger grants for scholarships come from the May T. Morrison and Carla Roed funds, and recipients have been Marna

Walline, Judy Monson, Estrellita Manaois, Jenifer Thompson, Renata Scharf, Delia Eagle and Karen Cummings. Delia also received a California Congress of Parents and Teachers, Inc. Scholarship.

**ALPHA XI—Woman's College, U. of North Carolina:** Kay Wharton and Mary Alice Watson were co-winners of the August and Charlotte Borgstrom Scholarship (in honor of our adviser's parents). Funds for this were raised by the chapter. . . . Seniors inducted into Pi Kappa Lambda were: Delores Hahn, Sandra Whitener, Anne Starr Minton, Jodi Rush, Nancy Kredel and Carol Thacker. II K Δ Scholarship awards went to Rennie Peacock, junior, and Rebecca Bradley, sophomore. . . . Mary Gilley won a Fulbright Scholarship to Germany, and scholarships to various institutions were won by Joan Fuerstman, Nanette Minor, Henrietta Nance, Sandra Whitener, Jodi Rush, Connie Hughes and Anne Starr Minton. . . . Joan won the Young Artist Award for the Greensboro Symphony Orchestra with Mary Gilley as first runner-up.

EQ: CHAUMONDE SALADIN presents chapter's "Outstanding Senior" cup to HELEN DILWORTH.



PATRICIA WISE, *Xi*, was rated tops among the 30 contestants at the Miss Lawrence-KU Pageant. For the talent portion Pat sang *Sempre Libera* from *La Traviata*. She received personal gifts plus \$125 in scholarships. Pat declined the opportunity to go on to the state competition, announcing that she would be one of the twelve apprentice artists to appear with the Santa Fe Opera Company during the summer.

Patricia is an outstanding student, active in student government, was song-leader for her Alpha Delta Pi chapter, and was recognized by Alpha Kappa Lambda fraternity for her beauty when they chose her their "AKL Sweetheart."

Pat has appeared in University Theater productions *Madame Butterfly* and *West Side Story* (the starring role, Anita.) This fall she will sing the role of Eliza in the School of Fine Arts production of *My Fair Lady*.

*Xi* wishes to nominate this talented sister whom they consider an outstanding representative of MU PHI EPSILON for

### Recognition



SANDRA WALBERG, *Mu Beta*, Washington State University, is an active chapter member both as piano soloist and accompanist. She attends WSU on a scholarship and recently won the Spokane Alumnæ Scholarship Award.

In these achievements Sandy is like other MU PHI EPSILON sisters who perform, and win scholarships. But when Sandy transcribes the notes she takes in class with her tape recorder, she does them in Braille typescript.

Sandy lost her sight at the age of three and was orphaned at sixteen when her father died. She lived in Vancouver, Washington, where she attended and later graduated from the State School for the Blind and Hudson Bay High School. On a scholarship she entered Lewis and Clark College in Portland where she was initiated into MU PHI EPSILON by *Epsilon Delta*. Her sophomore and junior years were at WSU where she is presently a senior. She carries a full academic program and recently won recognition as one of the four top performers in a recent campus-wide talent contest.

Sandy hopes to continue with graduate work. Her "major" interests are performance and teaching, and her self-termed "minor" obstacle is in no way deterring her ambition to achieve in her chosen field of music. Her chapter has no doubt of her future. It is as bright as the smile on her lips. *Mu Beta* proudly nominates Sandy for

### Recognition



## Chapter and Campus

**MU KAPPA—U. of Oklahoma:** Mary Anne O'Connell was selected as Miss OU and represented the university in the Miss Oklahoma pageant, where she reached the semi-finals. . . . Karen Acord was a finalist for Homecoming Queen, and Cathey Hangs for Yearbook Beauty. . . . We are proud of a MU PHI EPSILON alumna who is one of our faculty members, Celia Mae Bryant. She was elected Second Vice President of Music Teachers National Association. She is the first woman to hold this position which will ultimately lead to the presidency.

**TAU—U. of Washington:** We were proud of Kippy Brinkman who was this year's "Miss Washington." Kippy is a cheerleader and has been re-elected for next year. She is also song leader for Pi Beta Phi. . . . Early in fall quarter we gave a "Hello" party for prospective pledges and all new students and with faculty as guests. Phi Mu Alpha was our co-host. . . . During fall and spring quarters our pledge projects were cookie sales, successful and profitable. . . . A big thrill was the celebration of our chapter's 50th anniversary when *Seattle Alumnæ* honored us with a tea on May 23. . . . We presented Miss Eva Heinitz with a gift on the eve of her sabbatical leave. She is a distinguished cellist. She plans to spend her leave in Europe.

**ALPHA EPSILON—College of Holy Names:** Alpha Epsilon was proud to present Frederic Balazs in concert, following it with a reception. Mr. Balazs is a noted violinist, com-

poser and conductor of the Tucson Symphony Orchestra. The audience was captivated and enthusiastic.

**ALPHA GAMMA—U. of Southern Mississippi:** When June Weybright, from San Francisco, held a piano workshop in Hattiesburg we gave a tea in her honor. . . . Bonnie Craig was elected Sinfonia Sweetheart. . . . We voted to choose a "Big Brother" each year for our chapter. He is to help in our chapter activities and will be recognized at our annual banquet. Our first one is James Sclater, a theory-composition major and member of Sinfonia. . . . The MU PHI EPSILON—Phi Mu Alpha Sinfonia concert celebration of American Day of Music and the spring banquet in April were highlights of the year. The theme of the latter was "Sphere of Music," and guest speaker and honored guest was Virginia Hoogenakker, National Fifth Vice President. The May joint concert was a large scale effort and contained compositions written by students. Every member was an active participant in some way.

**EPSILON PHI—Friends U:** This chapter edited a booklet on "Music for the Wedding Service" in which was included a Foreword, telling the nature of the contents; sections on "What is Appropriate?" "Be Creative, It's Your Wedding," "Plan With Variety," and

FREDERIC BALAZS at AE reception



lists of appropriate vocal music, hymn material, organ preludes, processional and recessional music; also a list of music for various combinations of instruments. The program given included 18 numbers. A wedding party was featured in the presentation.

**PHI XI—Baylor:** Dr. Howard Hanson, retired dean of Eastman School of Music and famous American composer, was lecturer on Baylor's distinguished lecture series December 10, 1964. We were proud to honor him with a reception which was attended by our patrons, our sponsors, members of Phi Mu Alpha, members of the lecture series committee and the faculty. . . . In October *Phi Xi* held her musicale, followed by the installation of new patrons and a reception for them. . . . Also in October a Homecoming breakfast was held with members of MU PHI EPSILON, Phi Mu Alpha, Tau Beta Sigma and Kappa Kappa Psi as special guests. Pledges of the organizations entertained with skits and songs. . . . Our chapter adviser, **Mrs. Walter Corrie**, and her husband entertained members, pledges and patrons at a Christmas buffet on December 17. **Betty Edmonson**, accompanied by **Linda Coffman**, sang Christmas songs. . . . In January, *Phi Xi* presented Lynna Harbison, 14-year-old blind pianist, in concert. Lynna is a pupil of **Dorothy Brin Crocker**, *Dallas Alumnae*. Her program consisted of her own original compositions, including improvisations on three short themes in the classical, romantic and modern styles. The themes were submitted by volunteers in the audience. . . . On March 28 we were proud to present the Sterling Staff Concert Series winner, **Lynn Lewis**, in concert, and a reception was held in her honor.

She performed magnificently, and her program included numbers by Bach, Beethoven, Chopin, Ravel and Debussy. . . . Representing *Phi Xi* at the installation of *Alpha Omega* chapter on April 4 were **Janne Suggs**, **Rebecca Holt** and **Nancy Stubblefield**. Our two advisers, **Martha Barkema** and **Mrs. Corrie**, were also present. . . . The theme of the annual MU PHI EPSILON-Phi Mu Alpha spring banquet was "Rhapsody in Blue." Held on April 10, about 150 members, dates and special guests attended. **Rebecca Holt**, soprano, and **Don Bennett**, tenor, provided the entertainment, and pledges from both presented a skit, "The Grasshopper Opera."

**ALPHA SIGMA—Abilene Christian:** Our six pledges last year were enthusiastic and full of energy. They collected coat hangers, coke bottles and newspapers to sell as a fund-raising project. They cleaned out the record cabinets in the music literature record room. They were joined by others in the chapter in collecting scrap iron. Another project was more glamorous, a Beethoven Birthday Party. This was done in cooperation with the music literature class under Mrs. **Mina Coleman**, (our adviser.) **Judy Brown** and **Marilyn Litton** decorated with cartoons of "Shroeder", the pianist in the "Peanuts" comic strip, and blackboard admonitions "Vive le Beethoven!" Mrs. Coleman expressed the same sentiments on the blackboard in German! There were other decorations including the traditional birthday balloons, paper hats (newspaper hats,) with tassels, of course. Music by Beethoven was played and a cake was served, with frosted legend: "Happy Birthday, Ludwig." *Happiness is a Beethoven Birthday Party.*

## Here and There

District #19  
Sacramento, Calif.



ANN SCAMMON, National Fourth Vice President; ROBERTA O'CONNELL, District Director; ROSALIE V. SPECIALE, president MΦE Memorial Foundation; MARJORIE LAWRENCE, president *Sacramento Alumnae*.

*Portland Alumnae* host Mildred Andrews, following her concert. LILLIAN PETTIBONE, JEAN COMPTON, JEAN HARPER, MILDRED, BERTHA MACDOUGALL, FRED A BEACH.



District #13  
Austin, Tex.



MARTHA BARKEMA, District Director; DR. H. B. DIETZ, U. of Texas, luncheon speaker; SHARON MASON, MΦ, chairman.

CAROL ROBERTS, *Epsilon Phi*, crowned May Queen at Friends University.



District #7  
Bloomington, Ind.

MELVA CRAIN, District Director; CAREN DEE GOODIN, chairman





## Performances

**EPSILON MU—U. of Utah:** Our annual scholarship concert on May 3 included several instrumental ensembles. Thuille's *sextet, Op. 6* with Gaye Ann Harris, piano, Sylvia Jackson, oboe, Diana Ovard, flute, Anna Rose Laveder, clarinet, Dorothy Thomson, bassoon, and guest Jim Atkinson, French horn; Debussy's *Sonata for Flute, Viola and Harp* with Karen Perkins, Kathy Tadge and Shru De Li Smith; and Beethoven's *Quartette in E major, Op. 74 ("Harp")*, two movements, with Loi Ann Bailey and Linda Brown, violin I and II, Suzanne Wright, viola, and Mary Lindblom, 'cello. Also performing were Barbara Morr, pianist, last year's scholarship winner, Pamela Richardson, violinist, and guest performers from *Salt Lake Alumnae* Lynn Sanders Nelson, soprano, with Cherry Walker at the piano. Loi Ann was Miss Utah.

**ALPHA ETA—American U:** On February 28 we presented an annual program which included the first performance of a group of songs by Winifred Hyson, sung by Yvonne Sabine, soprano, accompanied by Gail Loveland. Chamber music was represented by a trio, Carol Laikin, violin, Judy Thomas, flute, and Marjorie Miller, piano. Elssa Zipp and Marsha Langston played Sara Bostwick's *Divertimento for Two Flutes*, which she originally wrote for them. Duo pianists Gail Loveland and Diana Richman, soprano Sandra Perlman, and SSCS winner Virginia Marks completed the program. . . .

Virginia has had a lot of engagements other than her SSCS recital commitments. Among them have been: so-

loist with the Fairfax Community Symphony Orchestra on March 1; and recitalist for one of the events in the Concert Series of the University of Virginia, February 15. She was finalist for a grant from the Martha Baird Rockefeller Foundation for Music. She won the Concert Artists Guild audition in New York City, which means a joint recital in Town Hall during 1965-66 season. She opened the Young Artists Series at Georgetown University on July 7 and received glowing reviews in the Washington papers. She was one of five young artists selected to appear on this new Series. In August she played at the Matthay Festival at University of Maryland. Winner of the Young Artists Competition entitled her to appear as guest artist at Brevard Music Camp during the summer. . . . Elssa Zipp, flutist, performed with the National Ballet Orchestra of Washington, D.C., in town, on tour and at the Arena Stage here in May. . . . Sandra Perlman, soprano, Yvonne Sabine, soprano, and Inga-Britta Braunlich, coloratura, were principals in the University production of *The Golden Apple*.

**PHI GAMMA—Peabody:** Jeannette Walters Brown, soprano, was presented on the Georgetown Young Artists Series in concern on August 11. As a regional winner of the Metropolitan Opera Auditions, she also attended a summer seminar on Mozart opera, directed by George Schick, one of the Met's conductors.

**XI—U. of Kansas:** The Departments of Fine Arts and Theater presented, in English, Mozart's *Marriage of Figaro* with Martha Randall as Susanna and Doris Peterson as Cherubino. Figaro was portrayed by Mr. Norman Abelson

of the voice faculty. Martha is an assistant instructor of voice at K.U., and Doris is president of Xi. Six other members were in the production: Linda Nemeth and Patty McGrew, chorus; Rebecca Rogers and Linda Judd, University Little Symphony; Leann Hillmer and Shirley Williams, production crew. The production was an outstanding success. . . . We are proud to announce that five Xi women were elected to perform on the Spring Honor Recital: Linda Judd, 'cello, Jo Archer and Leann Hillmer, piano, Ineta Williams and Patricia Wise, soprano.

**ALPHA PI—Southwest Texas State:** Chapter members sang in the College Choir for the inauguration of the new college president, James H. McCrocklin, on November 29. President and Mrs. Lyndon B. Johnson were present as were a number of officials from Washington, D.C. . . . Some of our chapter members were in the College



*Marriage of Figaro,*  
DORIS PETERSON, NORMAN  
ABELSON, MARTHA RANDALL

Band which led the Presidential Inauguration Parade for the inauguration of President Lyndon B. Johnson in January, 1965. . . . *Alpha Pi* members in Choir participated in the chorus of the San Antonio Grand Opera during their Festival in March. . . .

---

Born in Cebu, Philippines, ASUNCION DEIPARINE, mezzo soprano, received her B.A. from St. Theresa's College there in 1961. In the same year she came to the United States as a participant in the Experiment in International Living Program. A performer on radio, TV and in concert in her native land, Asuncion in this country has appeared publicly for schools, organizations and in concerts over WNYC.

In 1963 she was Program Director at Zion National Park, Utah. Just previous to that appointment she gave a solo concert at International House.

Asuncion is a scholarship student at Juilliard and holds one of the first two International House Fellowships. As

winner of competitive auditions at Juilliard, Asuncion appeared as soloist with the Juilliard Theater Orchestra on December 18, 1964, in Mahler's *Kindertotenlieder*.

She has brought honor to MU PHI EPSILON and to her chapter, *Epsilon Psi*, which proudly nominates her for

## Recognition



## Service

**ALPHA BETA—Hartt College of Music:** We helped Phi Mu Alpha Sinfonia with their annual Jazz Concert, and they in turn helped us with our smorgasbord supper. This latter was a project to help a school organization, the Chorale, to buy new robes. The food was donated by the girls, the patrons and the alumnæ. We presented the director with the check for \$100. . . . Other money-raising projects we carry on throughout the school year are cake and sandwich sales, and the funds go to supporting donations, loans and scholarship help. . . . This year we sent 40 pounds of books and music to the Philippines. . . . In our magazine subscriptions drive, the pledges were responsible for a minimum of one order per girl. . . . We presented our school library with a check for \$50 for the purchase of new books and supplies.

**PHI EPSILON—College of Emporia:** We have had two service-through-music projects during the last year. Twice a week two or more members have led musical games and activities at the Retarded Children's Center in Emporia. Every Sunday afternoon some member has gone to the geriatrics department of the County Hospital to play and sing hymns with the patients.

SELENA PETERSON, JEANETTE MURRAY and  
MARIETTE SIMPSON



**NU—U. of Oregon:** We took on the project of cooking a ham dinner for between 400-500 music educators who attended their Conference here in Eugene last spring. 75% of the profit went into our scholarship fund.

**EPSILON OMICRON—Indiana U:** The music-for-the-Philippines project gained much response, and we will be sending a large supply of music overseas. . . . One of our projects is to help orient the new music students to their surroundings and curriculum at I.U. Each member will wear a banner when she is around the music building to be of assistance in answering questions or guiding anyone.

**MU ETA—U. of Pacific:** Several of our members give free lessons to children unable to pay for them. In the spring the students are presented in a recital to which friends and relatives are invited.

**TAU—U. of Washington:** Marcia Keene has been working with the blind at the Northwest Rehabilitation Center for the Blind. She teaches violin and autoharp and reads for music therapy. . . . Judi Evans has taught piano there and was in charge of the evening program given by *Tau* for the blind. . . . *Tau* also goes to Fircrest once a month and entertains for the mentally and physically retarded of all ages.

Blind patient with MARCIA KEENE



## Alumnae

# Tempo

# 1964-1965

## Creativity Service Leadership

CECILE VASHAW, Toledo



## Toledo Alumnae

### Golden Anniversary

The arrival of a Golden Anniversary gives Toledo Alumnae chapter the opportunity to survey the past and present accomplishments and envision a program of future contributions to the development of music locally, nationally and internationally.

Members of this chapter are active in the following fields of music:

*Monday Musicale:* honorary members, two; active, ten; associate, two; officers, four; and committee chairmen, three.

*Toledo Piano Teachers Association:* honorary members, two; active, ten; and committee chairmen, two.

*Ohio Music Teachers Association:* active members, thirteen.

*Toledo Symphony Orchestra:* players, four; and secretary of the Orchestra.

*Toledo Youth Orchestra:* conductor, Cecile Vashaw. The Orchestra is rated one of the finest Youth Orchestras in the United States.

*Tolora Quartet:* plays concerts in the public schools: member, one, 'cellist.

*Toledo Little Orchestra:* plays concerts in the public schools. A recent concert was attended by 3,500 children under ten years of age. It featured a seven-year-old pianist who performed *Games*, written by her teacher, MΦE Composition Contest winner Elizabeth Gould.

Church organists number four, with two chorus and choir directors and one church soloist. One member has contributed many hours of service to music in hospitals and is accompanist

for the Senior Citizens Chorus. Students of ten members have received numerous scholarships in leading music schools.

Three of our members are recognized composers: Elizabeth Gould, Cecile Vashaw and Patricia Saurenne. In international music Elizabeth has had compositions commissioned and performed in Germany, Spain and Latin America.

Cecile, Marana Baker and Ruth Werchman have performed at the Puerto Rico String Festival and with the Symphony Orchestra of Puerto Rico.

Our budget for the year 1964-65 for scholarships and philanthropies was \$495. It covered allotments to scholarships (two, \$100 each), and donations to MΦE Memorial Foundation, University of Michigan and Toledo University Library in memory of Ava Comin Case and Bess Cunningham; the Toledo University Music Department (\$200); Toledo Museum of Art Business Fund (which transports children to music and art classes); Toledo Museum of Art; and Toledo Symphony Orchestra.

We give chapter programs each month and two open programs; we have two patron events each year and assist *Epsilon* chapter in initiation ceremonies and chapter events.

These are many facets of musical activity and are living proof that Toledo Alumnae chapter is truly dedicated to music—"the noblest of all the arts" and is following along the pathway that "leads upward to the stars."

73rd

Lewisburg  
Pa.



Welcome  
to New  
Alumnae  
Chapters



75th

St. Petersburg  
Fla.

74th

New Orleans  
La.



# Creativity

## meetings chapter program

**NEW YORK:** Following the November concert by the New York Orchestral Society with **Ann Rylands** as soloist, a reception was given in honor of Ann and our National President, **Janet A. Wilkie**, here for the occasion. Hostesses were members of the chapter's Executive Board and the affair was given in the home of **Adine Morgan**. Former National President **Eleanor Wilson** was also an honored guest, stopping over on her way to Africa (a tour, not residence!). At this time Janet Wilkie presented **Gertrude Otto**, former National Vice President, with a past officer's pin. . . . A memorial service for **Ruth Bradley** was given on November 15. **Adelaide Adams** and **Theresa Bruner** played four-hand music by Brahms and Schubert, and **Lucretia Ferre**, accompanied by **Clara New**, sang five songs by Ruth Bradley, one of which, *A Mother's Question* was set to words by **Elizabeth Lamb** of this chapter. . . . Closer co-operation between *alumnæ*, collegiates and patrons was stressed this year with active, mutual participation in recitals, teas, meetings and publicity.

. . . . Approximately one hundred *alumnæ*, collegians, patrons and guests attended the spring luncheon and program given on May 8. **Joan Milkson** and **Ann Rylands**, violinists, and **Margaret Harris** and **Helen Benham**, pianists, of *Epsilon Psi* gave the program. Among the honored guests

were past president **Adelaide Adams** and the Reverend Dr. Hampton Adams, who had recently retired as pastor of the Park Avenue Christian Church. A month later Dr. Adams passed away, and we shall miss him greatly. He was a long-time familiar and beloved figure at our concerts, meetings and affairs. . . . We are also grieved over the passing this summer of **Edwin Hughes**, husband of **Jewell Hughes**, and long-time friend, supporter and patron of MU PHI EPSILON. The world of music and music educators will feel his loss deeply. . . .

**MINNEAPOLIS:** Christmas music from many lands featured our December program with Britten's *Ceremony of the Carols*, directed by **Estelle Wylie**, a high point. . . . In January **Ruth Havlik**, former National Editor, gave an informative talk on Braille notation.

### Citation for Orah

**DENVER:** "Accompanied by Fashions" was the theme for the annual luncheon-fashion show held in February. More than eighty members and guests were present to see the "fashions suitable for all musical occasions" modeled by **Greta Lea Johnson**, **Phyllis Johnson**, **Virginia Ludwick** and **Carole Murfield** from the *alumnæ* and **Kathy Knight**, "Miss Colorado," from *Mu Rho*. **Billie Grace**, drums, **Yvonne Clark**, bass, and **Julie Hudson**, piano, provided background music. The highlight of the affair was the presentation of the framed Citation, the "Orah Ashley Lamke Distinguished Alumna Award," to **Orah Lamke**. **Margaret Daugherty**, president of *Denver*

*Alumnæ* chapter, made the presentation in the name of the sorority. Those of us who attended felt very privileged to have participated in thus honoring our beloved Orah. With Orah, as honored guest also, was her daughter, Mrs. John Ahlborg.

**ST. LOUIS COUNTY:** For the past two years we have made a practice of including ensembles on our chapter meeting programs. In most cases, these ensembles, instrumental and vocal, have been formed and practiced by our members expressly for the occasion. . . . In addition to our regular meetings, we had two supper meetings, beginning and ending the year, and a Christmas party. . . . At one meeting our guest speaker was Dr. Leigh Gerdine, chairman of the department of music, Washington University, and member of the Missouri Governor's Committee on the Fine Arts. His wife, **Alice Gerdine**, is a member of *Epsilon Tau*. . . . Other special programs included a book review and a piano duo with **Margaret Brunell** and **Mildred Fisher**, patron of *Kansas City Alumnæ*.

**CINCINNATI:** We had a large group of members in the opera audience when **Jean Madeira** appeared in *Il Trovatore* last fall. The chapter presented her with a sterling silver charm of the Tyler-Davidson Fountain, a Cincinnati landmark.

**SEATTLE:** In May, the Seattle MU PHI EPSILON String Ensemble, directed by **Rachel Swarner Welke**, performed works by Mozart, Purcell, Handel and Quincy-Porter. Members of the ensemble were: first violins, **Phyllis Rader Rowe** and **Donna Durgan Weller**; second violins, **Laila Hammond Uhlman** and **Rosemary**

**Hollister Folan**; violas, **Winifred Leighton** and **Sigrid Brodine Lonider**; 'celli, **Juliet Brodine Cunningham** and **Marilyn Alderman Swafford**.

**SAN DIEGO:** Toastmistress for our District Conference was National Past President **Dr. Margarette Walker**. **Dr. Mary Kathryn Philips** of California Western University was the principal luncheon speaker. . . . **Marilyn Horne's** concert on November 14, sponsored by the San Diego Community Concert Series, was truly beautiful. Our chapter presented her with a corsage and greetings at the close of her concert. . . . Four of our most interesting meeting-programs were nationalistic in nature, Slavic, Scandinavian, Central European and American. . . . In December the program was given by children of members, followed by group singing of Christmas music.

### "The Case for Live Music"

**BLOOMINGTON:** One of our best meetings of the year was the one in March, at which time Mr. **Tibor Kozma**, conductor of the Indiana University Symphony and formerly at the

TIBOR KOZMA



Metropolitan Opera, was our speaker. He spoke with wit, knowledge and conviction on "The Case for Live Music" which was both controversial and stimulating. His talk will appear as an article in a future issue of "Your Musical Cue," School of Music, Indiana U. magazine.

**SPOKANE:** Chapter activities have included a "Husbands' Party" which was a terrific success. . . . **Carmen Hagman** had the pleasure of entertaining **Sylvia Ocsio**, *Alpha Tau* and *Ep-*

**BERTHA KREHBIEL**, *Alpha*-initiated and presently a member of the *Cincinnati Alumnae* chapter, is an alumna of the Cincinnati College of Music. Because of her outstanding work as a pianist she was awarded the Springer Gold Medal with distinction. She has served as a delegate, both music and business, to a number of MU PHI EPSILON National Conventions. Two former editors of *TRIANGLE* have been proud to have her serve with them as co-editor.

Her great interest in students and her generous assistance to them brought to her an appointment to the Board of Trustees of the Cincinnati College of Music. Later, following the uniting of the College of Music and the Conservatory, she was appointed to the Board of the new College Conservatory.

For a number of years Bertha has been president of the Matinee Musical Club, the professional music club of Cincinnati, which boasts of an associate membership of over a thousand members. Their subscription series presents artists of the highest caliber, both nationally and internationally.

*silon Iota*, during interim between end of school session and beginning of a summer session. They toured the Northwest seeing such attractions as Grand Coulee Dam, Wenatchee Valley, Seattle, Victoria and Vancouver, B.C. They also visited Carmen's home in Cashmere and while there they played and sang for the Cashmere Rotary Club. Sylvia received her master's degree in August and returned to the Philippines to teach at Notre Dame College in her home town of Catabato City.

The College Conservatory conferred upon her the honorary degree of Doctor of Humanities at their 1961 exercises. Another honor has been her appointment to the Honorary Presidency of the Women's Symphony Committee.

Because her abilities are great, her loyalties are deep, and her integrity is high, MU PHI EPSILON in Cincinnati is proud to nominate Bertha for

### Recognition



## performers and performances

**NEW YORK:** The 26th annual WNYC Festival of American Music was broadcast on February 17 and was performed by MΦE artists. Heard in first public and first radio appearance were: *Sonata for Piano* by Vittorio Gianinni and *Suite for Children: Gavotte, Gigue, Invention, Serenade* by **Emma Lou Diemer**, played by **Judith Alstadter Hersen**. Heard in first New York and first radio performance were *Theme and Variations* by **Edwina Wills**, played by **India Zerbe**, 'cello, accompanied by Catherine Burton. *Four Entr'acte Interludes (from Act I, Sartre's "Nekassov")*: **Irma By the Seine, Jules' Newspaper Office, The Pursued Swindler, and George's de Valera's Plan by **Annetta Lockhart**, played by **Annetta**, piano, **Ruth Muller**, violin, and **Charlotte Owen**, clarinet; and *Caprice* by **Gladys Fisher**, played by **Judith**. **Shirley Munger's** *Procession of the Magyars* was also played by **Judith**. Other American compositions were four songs by **Charles Ives** and *Duo for Violin and Piano* by **Leon Kirchner**. Tapes of the broadcast were made and are available on request to the *New York Alumnae* president, **Dorothy French**. . . . National President, **Janet Wilkie**, was present on MU PHI EPSILON Day at the Worlds Fair, July 24, when a program and reception were given at the Penthouse of the Women's Hospitality Center of the Better Living Pavilion. On the program were **Annetta Lockhart**, Philadelphia, **Charlotte Owen**, Berwyn, Pa., **Ruth Muller**, Cherry Hill, N.J., **Yvonne Sabine**,**

**McLean, Va.**, and **India Zerbe**, Cedar Grove, N.J. . . . **Bettylou Scandling**, Chairman of the Board of Directors of the MΦE Memorial Foundation, was soloist in an uncut presentation of Bach's *St. Matthew's Passion* with the Santa Fe Civic Chorus and Orchestra on Palm Sunday and Good Friday. On Easter Sunday she was soloist for **Frances Williams' Easter Cantata** at Grace M. E. Church in Brooklyn. . . . **Frances Yeend** sang two "firsts" in her career this last spring, *Lohengrin* in March in San Antonio, and *Suor Angelica* the month before in Fort Worth. Last fall she and **Mario del Monaco** sang in *Othello* with the Philadelphia Grand Opera Company. . . .



MARIO DEL MONACO—FRANCES YEEND

**SPOKANE:** Mezzo-soprano **Carmen Greenstreet Hagman**, last year's president, was a soloist for the Central Methodist Temple Choir concert on January 24. Her brother, **Vernon Greenstreet**, was the guest organist.

VERNON GREENSTREET  
CARMEN HAGMAN



Mr. Greenstreet is director of vocal music in the junior and senior high schools of Oak Harbor, Washington. It was the first time in almost ten years that the brother and sister had appeared together in a formal concert. . . . Carmen was also soloist for the local presentation of *Elijah* last November. . . . An outstanding performance not to be forgotten was the February presentation in concert form of *La Traviata* by the Spokane Symphony with Frances Yeend, *New York*, as Violetta, and Marie Rodkey, *Spokane*, as Flora. Both women are initiates of *Mu Beta*.

MARIE RODKEY—FRANCES YEEND



One of Spokane's most active members is **MARIE RODKEY**, graduate of Washington State College (now University) and initiated member of *Mu Beta*. She was a major in music education with a minor in voice, and has since taught both public school music and privately.

She has been active in church choral work as a soloist and a director. She was soloist for the Civic presentation of the *Messiah* for five years and has been soloist for other oratorios as well.

In February she sang the role of Flora with Frances Yeend as Violetta in the Spokane Symphony concert performance of *La Traviata*.

Marie has held the office of president of this chapter at two different times. During her first term the chapter changed from club to chapter status and *Epsilon Iota* was installed. During her second tenure the music therapy program was established on a regular basis and the scholarship award was increased. In 1962-63 she served **MU PHI EPSILON** as District Director.



MARIE RODKEY

Her husband is principal of the North Central High School and they have two daughters and a son.

For her distinguished activity in the development of the Spokane area chapters and her public appearances which have brought honor to **MU PHI EPSILON** the *Spokane Alumnae* chapter nominates Marie for

### Recognition



MYRA BRAND



JANET DAY

EWAN MITTON

**SALEM:** Ewan Mitton and Myra Brand sang the roles of Rosalinda and Adele in the Portland Opera Association's production of *Die Fledermaus* and received excellent reviews by the Portland critics. This is the first time Salem singers have taken leading roles in a Portland Opera Association production. A few months later, in February, Ewan sang Mimi in the same company's production of *La Boheme*, with Janet Day, *Portland*, as Musetta. Both of the women drew high praise from the critics.

**DAYTON:** **MU PHI EPSILON** and Sigma Alpha Iota gave a joint program of Elizabethan music, commemorating the 400th anniversary of Shakespeare, on November 8, 1964. Guest artist was Glorian Thomas, **MU PHI EPSILON** member from Columbus, Ohio, and former National Vice President. Gloria is well known as a harpsichordist. The program was given at the Dayton Art Institute.

**KANSAS CITY EVENING:** Violet Orloff and Dolores Waters sang light operatic duets for several weeks in a Kansas City restaurant. . . . During the year Anita Strumillo and Dolores did

accompanying for the Circle Theater of Kansas City, and Dolores was musical director for *Once Upon a Mattress*.

**PORTLAND:** Last winter Janet Day, well known to Northwest audiences, won highest honors as "Singer of the Year" in a competition held by the National Association of Teachers of Singing.

**SACRAMENTO:** Our third biennial recital was held at the Crocker Art Gallery on March 14. The program included Schumann's *Papillons*, played by Kathleen Fourness; an aria from Verdi's *Othello*, Nadine Salonites; music by Scarlatti, Bach and Telemann played on two harpsichords, Doreen Mauk and Frances Savage; and four songs by Brahms for women's voices with two French horns and harp, Joseph and Betty Axup and Mary Bremner. The 14-voice ensemble, directed by Jean Kopf, included Lenore Cross, Gene Halbrook, Donna Clump, Alice Kurotori, Marjorie Lawrence, Esther Allmendinger, Shirley Broadhurst, Jane Cox, Sharlene Rawlinson, Eileen Carness, Adele Mars, Ann Scammon and Norma Stephenson.

## Composers

**SEATTLE:** For the first time in the Artist Program Series, an entire concert was devoted to the works of three of MU PHI EPSILON's nationally known Seattle composers: Mildred Hunt Harris, Dorothy Cadzow Hokanson and Sister Harriet Mary, SNJM. The concert—a retrospective of each composer—showed the wide range of performing media for which they have written. The works for chamber ensembles featured voice and piano; clarinet and piano; violin and piano; voice, flute and piano; two flutes; string quartet unaccompanied women's vocal ensemble; and women's vocal ensemble and organ.



SISTER HARRIET MARY, DOROTHY HOKANSON, MILDRED HARRIS

**SPOKANE:** Commissioned by the Eastern Washington Historical Society to write a number as a tribute to Spokane on its 75th anniversary as a city, Sister Harriet Mary, *Seattle*, produced her *Lyric Sonata* for violin, cello and piano. It was performed last January on the Museum Series. Sister Harriet Mary has been winner in our MΦE

## Original Composition Competitions.

**WASHINGTON:** United Nations Day was honored at the National Gallery of Art on October 25, 1964, with a program by the National Gallery Orchestra, Richard Bales conducting, which offered two premieres. One was the *Third Symphony, "Antique,"* by Emma Lou Diemer. . . . Peg Hoenack has developed her own teaching materials for instrumental work with five and six-year-olds in her newly published book, "Songs I Can Play." Another book should be off the press by the time you read this. . . . At the final meeting this year an interesting program of her own compositions was given by Alma Grayce Miller.

**BERKELEY:** Mary de Garmo, a full time volunteer Braille music transcriber, has completed the only solo accordion music now available in the United States. All of her transcriptions are in the Library of Congress. At a recent Berkeley chapter meeting Mary gave a talk on Braille music, and how a blind person reads music. On the program with Symeta Kuper, pianist, and Carol Ann Smith, violist, was fourteen-year-old Bruce Bresloer, a blind clarinetist, who uses music transcribed by Mary. They played the Mozart *Trio in E*. (See The Triangle, March 1963, pp. 16-17, for article by Mary).

**DETROIT:** Mary LeBow Eriksen is co-author of a book on music education, "Music for Today's Boys and Girls," Allyn and Bacon, publishers.

**PALO ALTO:** Original compositions by Gladys Lawlor were played at our March meeting.

DIANE BISH, *Wichita*, is now at the University of Amsterdam, Holland, on a Fulbright Grant. She will be studying organ and harpsichord with the internationally famous Gustav Leonhardt and also composition.

Diane received her bachelor and master of music degrees from the University of Oklahoma. The past year she has been working for a degree in education at Wichita State University. An honor student at OU with a cumulative grade-point of 3.7, Diane has been the winner of many contests, awards and competitions, among them the National Organ Competition and the MU PHI EPSILON Original Composition Contest for 1963.



Diane has studied organ with Dorothy Addy of Wichita and Mildred Andrews, David Ross Boyd professor of music at University of Oklahoma, who has taught more Fulbright scholarship winners than any other teacher. Diane is her eighth student to receive the grant since 1962. Diane is a member of Pi Kappa Lambda and Delta Gamma. She has appeared as soloist with the Oklahoma City Symphony Orchestra and has been organist for a number of Wichita churches. Diane won the student competition at the Regional American Guild of Organists' Convention in Tulsa, Oklahoma. The

award was \$100 and she gave a recital at the convention and was the region's representative to the AGO National Convention in Atlanta last June.

For her distinguished record in scholarship and performance, and for the honor she was brought to MU PHI EPSILON, the chapters she has been affiliated with, *Mu Kappa*, *Phi Pi* and *Wichita Alumnae*, nominate Diane for

## Recognition

**SAN FERNANDO:** On May 2 we presented Yoriko Takahashi, pianist, and Zina Schiff, violinist in a concert. Yoriko is a member of our chapter. She received her B.A. from Tokyo University and was a scholarship student at Juilliard. She is now doing graduate work at UCLA, is teaching assistant with the Opera Workshop,

and has—as winner of the Atwater-Kent Award—been soloist with the UCLA Symphony. She has also won the Sigma Alpha Iota Annual Scholarship Award and several others. . . . Zina is a sister of Eileen Schiff Wingard and is considered a young violinist with great promise. Her first lessons were from her sister.

## Service projects

**ANN ARBOR:** In the December 1964 issue of Triangle (page 50) we told you of the "Piano Project" undertaken here by MU PHI EPSILON and Sigma Alpha Iota. It is a pleasure to report that twelve months from its inception, the plan to provide our Women's City Club with a Steinway piano was fulfilled. Through a series of six Morning Musicales, featuring among others MU PHI EPSILON's own **Nelita True**, pianist, plus a gala formal dinner and concert in April, the final payment on the new piano was made. Ann Arbor now has an added concert facility, and continuation of the Musicales has been assured by the enthusiasm with which they were received in this debut year. These concerts also provide a much needed outlet for locally talented performers.

**CEDAR RAPIDS:** We presented an autoharp to the Jane Boyd Community House. A girl's worker, Jane Costello, will receive instruction in playing the instrument and will use it for accompaniment to group singing at the Community House; also, she will teach others to play the instrument.

**INDIANAPOLIS:** Our traditional decorating of a Christmas tree with gifts to the Indianapolis Symphony Maintenance Fund resulted in a substantial contribution. . . . During the year it has been our pleasure and privilege to be of service to a Mu Phi sister from Pittsburgh, **Elsa Stockmann**. She is a patient in the Barton Nursing Home, and she has enjoyed the loyal

and loving support of MΦE sisters previously unknown to her. Through this association we are experiencing the true meaning of MU PHI EPSILON friendship and service.

**CINCINNATI:** Our work in music therapy has been outstanding this year. Eleven members have given over *two hundred and forty hours*. We are proud of those who gave so generously of their time and talent to help others.

**ST. LOUIS COUNTY:** Our chapter provided the \$100 installation fee in order that *Alpha Omega* might be formed. . . . Some of our members provided homes for *Epsilon Tau* activities and, alternating with *St. Louis Alumnae*, provided lunches for *Epsilon Tau* girls who held their meetings during the noon hour. . . . Some of our music therapy programs for old folks' homes became family affairs as members took along children and husbands to participate. **Betty Buck** and her daughter, **Phyllis Wofford** and her husband and daughter, and **Yvonne Sunnen** and her husband were among those who performed as family groups. More, planned for next year.

**CENTRAL CHICAGO:** **Clara Orwig**, music therapist, has completed 104 hours in music therapy work in Chicago.

**DETROIT:** **Doris Houghton** gave more than 50 hours to the Service Through Music program, reading to a blind music student. **Doris, Dorothy Lamb, Elenora Skillman** and **Elaine Symons** have given programs at the Arnold Home. . . . **Helen Ramage** and **Bessie Potts** go on a regular basis to the Detroit Music Settlement School.

## patrons

**DETROIT:** Our gratitude is expressed here to our patron, **Bertha Seifert**, who not only made arrangements for the Spring Concert, but, as in the past two years, assumed the cost of the facilities at Kingswood for the concert and the Afterglow.

**NEW YORK:** References to composers have been made elsewhere, but we wish to add here our congratulations to

**Ruth Coleman**, patron, whose arrangement of the old Bohemian carol, *Shepherds Were Watching*, for treble voices with piano or organ, is now available. English text by Sigmund Spaeth was used. Her *Song Cycle for the Young* was given on MU PHI EPSILON's program over WNYC-American Music Festival several years ago.

**KANSAS CITY:** Our 1964-65 season opened with a lovely Coffee Hour for the patrons at the home of Mrs. E. M. Douthat on October 6.

## Patron Profile

*Palo Alto* chapter is proud to introduce its distinguished patron, Mrs. Stanley Partridge. Mrs. Partridge graduated in nursing from Cornell University, where she was elected to Phi Beta Kappa. She won a scholarship in brain surgery at the Peter Bent Brigham Hospital in Boston and was scrub nurse for the late famous brain surgeon, Dr. Harvey Cushing. Later, as nurse in the Army Nursing Corps she was stationed in London, Paris, Berlin, Hawaii, and finally, at Letterman Hospital in San Francisco where she married Col. Stanley Partridge in 1941. They have since resided in Los Altos.

It would be difficult to do justice to all of her activities in so short an ar-

ticle. Her talents have ranged through hobbies in ceramics, mosaics, painting, sketching and genealogy. In the latter instance she has been commissioned to do a research paper for the California Genealogical and Historical Society's magazine. In the field of art she designed the familiar name-o-gram stationery: a girl's name worked into the lines of the full skirt of the dainty figure. Using this idea, she designed for the *Palo Alto Alumnae* chapter's exclusive use the print which we use on our yearbook cover and our Scholarship Luncheon program, with the name, MU PHI EPSILON, cleverly designed as part of a lovely harp.

MRS. STANLEY PARTRIDGE



Palo Alto Alumnae Chapter



## Leadership

honors

education

community

**TOLEDO:** Cecile Vashaw has resigned as director of the Toledo Youth Orchestra which she has conducted since founding it fifteen years ago. She was commended by the president of the board of the Toledo Orchestra Association which co-sponsors the young musicians' group with the Toledo Board of Education. Cecile leaves this post because of her responsibilities as director of music for the Toledo public schools, teacher of instrumental music, composer and collaborator in writing a series of books on teaching instrumental music. *Toledo* chapter is proud of this distinguished member. As was announced in the May 1965 issue of **THE TRIANGLE** Cecile had the thrill of hearing her composition, written in collaboration with Julia Smith, *Remember the Alamo*, played by the U.S. Navy Band preceding the inaugural ceremonies for President Lyndon Johnson. The number was dedicated to him.

### Treasure Mountain Festival of Arts

**SALT LAKE CITY:** Four members of *Salt Lake City Alumnæ* are actively engaged in the operation of the Treasure Mountain Festival of Arts whose season was July 25 to August 22. **Norma Lee Madsen**, former National Vice President, is registrar and business administrator; **Sally Peck Lentz**

is the chamber music coordinator, and both are on the faculty which also includes **Gladys Gladstone** and **Lennox Larson**. This is Sally's 14th year as principal violist with the Utah Symphony, and she teaches violin and viola at the University of Utah. **Norma Lee** is also a member of the Utah Symphony, violin section, and on the faculty at the University. **Gladys** is head of the piano department there and **Lennox** is also a member of that faculty. There are 18 instructors on the faculty of the Treasure Mountain Festival of the Arts, each of them associated with the Utah Symphony, University, or is a graduate of the University. The location is Park City, about 30 minutes from Salt Lake City, and which was once an old mining town. Offered is a four-week course of study with recitals and concerts, a Festival Orchestra and Faculty Ensembles. There will be more about this new Festival in an early issue of **TRIANGLE**. Watch for it.

**INDIANAPOLIS:** We are honored to have in our membership leaders in local, state and national musical organizations. These members include: **Lucille Lockman Edington**, National Vice Chairman of the National Music Week of the National Federation of Music Clubs; **Betty Cook**, State President of the Indiana Federation of Music Clubs; **Madge Gerke**, National Third Vice President of Mu Phi Epsilon; **Ruvine Coleman Jones**, President of District I of the Indiana Federation of Music Clubs; **Charlotte Moore**, Dean of the Indiana Chapter of the American Guild of Organists and **Ruby Winters**, President of the Indianapolis Matinee Musicale.

*NEO needs your Zip Code*

"... our inner shrine is ever bright ..."

**ANNE PARSONS BENDER**, *New York Alumnæ*, April 1965

**CLARA DUEA BENSON**, *Phi Iota, Los Angeles Alumnæ*, March 1965

**MARVEL GARBERSON BLEASDALE**, *Omega, Palo Alto Alumnæ*, April 1965

**AGNES CLARK BURCHFIEL**, *Mu Eta*, 1964

**MILDRED W. McALLISTER FOLTS**, *Nu*, 1964

**MARGIE KEELIN GRIFFITH**, *Mu Omega*, July 1965

**FRIEDA GAGEL HARRINGTON**, *Delta, Detroit Alumnæ*, April 1965

**IRENE LEFTWICH HARRIS**, *Mu, Atlanta Alumnæ*, 1965

**MARY C. LINDAUER**, *Phi Sigma*, December 1964

**GERTIE AMELIA LOBBEN**, *Phi Iota*

**URSULA ANDERSON McDONOUGH**, *Phi Iota*

**ZELLA PRICE MORFORD**, *Delta*

**MARJORIE K. PIDDUCK**, *Tau, Seattle Alumnæ*, February 1965

**EDNA PRICE**, *Delta*

**ELNA SHERMAN**, *Boston*, September 1964

**MARY ISABEL SHORT**, *Mu Beta, Spokane Alumnæ*, August 1964

**LUCILLE SKINNER**, *Upsilon, Cincinnati Alumnæ*, May 1965

**ISABEL THOMAS**, *Columbus Alumnæ*, December 1964

**BERENICE WILSON WIERS**, *Gamma, Ann Arbor*, June 1965

**JEAN WILLIAMS**, *Theta, Portland Alumnæ*, July 1965

### MARIE MORRISEY KEITH—In Memoriam

The passing of **Marie Morrisey Keith** on March 4, 1965, has brought sorrow and loss to the world of music of which she was so much a part. Marie was the sixteenth national president of the National Federation of Music Clubs, 1947-51, during which years outstanding achievements were accomplished.

Marie made her debut in Town Hall

in 1915 and enjoyed a distinguished artistic career.

For her artistic achievements, her leadership, her interest in young artists and the honor she brought her sorority, the Marie Morrisey Keith Award was established and is given each year to the collegiate chapter showing greatest improvement in their own scholastic average during the year.

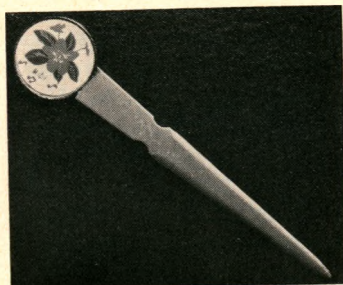
# FRIENDSHIP CORNER

*Helps*

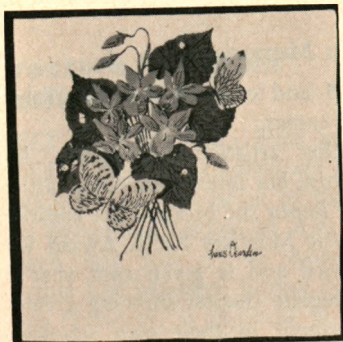
## MΦE Memorial Foundation



#137—emblem



#220\*—letter opener



#146\*—napkins

Orders to be sent to  
Mrs. Walter Stephenson  
MΦE Fr. Cor. Orders Chrm.  
2424 Bradfield Dr.  
Lincoln, Neb. 68502

Profits from sales of items  
from this catalogue benefit  
The MU PHI EPSILON  
MEMORIAL FOUNDATION  
Make check or money order to  
MU PHI EPSILON  
Mention name of your chapter.

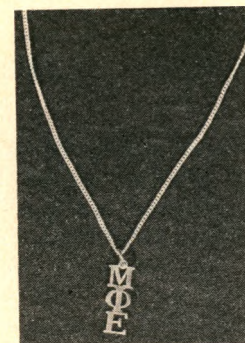
*Items with MΦE motif:*

#107	tile, white ceramic	\$3.50
111	sweat shirt (S-M-L)	4.50
113	pennant, 5" × 12"	1.00
137	emblem, white felt	2.00
200	car window stickers (10)	1.00
202	pen, purple ink	.75
209	crest cut	1.75
210	place cards (20)	1.00
220	letter opener, gold and white*	1.25*
230	pendant necklace, s.s.*	3.00*
235	pendant necklace, 10K gold*	4.00*

*Personalized items:*

#106	address labels (1,000)	2.00
------	------------------------	------

\* indicates new items  
s.s.—sterling silver



#230-#235—necklace

*Items with violet motif:*

#101	note paper	\$ .50
105B	paper guest towels*	.35*
108	handkerchief, linen	1.25
142	gift-wrap paper	.25
142B	purple ribbon	.25
145	tea napkins (25)	.40
146	luncheon napkins (15)*	.35*

*Jewelry, musical motif:*

120	music note pin, s.s.	1.95
120B	music note earrings, s.s.	1.50
124	G clef pin, s.s.	1.95
124B	G clef earrings, s.s.	1.50
133	piano award pin, gold color	.50
134	violin award pin, gold color	.50
143	jeweled note pin, rhinestones	2.95
144	bracelet, s.s.	5.00

add 10% for postage



#908, #916—charm bracelet\*

#908	bracelet, s.s.*	\$2.00
916	charm bracelet, s.s.* (heavier)	2.95

*Charms:*

251	treble clef, s.s.	2.50
62	French horn, s.s.	4.25
338	baritone, s.s.	2.00
157	16th-note, s.s.	2.95
325	violin, s.s.	2.00
301	crest charm, s.s.	4.50
302	crest charm, 10K gold	11.50

For listing of other charms, many  
only \$2.00, write to Friendship Cor-  
ner.



#111—sweat shirt



Seated, left to right: VIRGINIA HOOGENAKKER, WILLA LOWRANCE, JANET WILKIE, MADGE GERKE, LOIS GORDON, ANN SCAMMON. Standing, left to right: ELEANOR WILSON, national finance chairman; VIRGINIA FISER, national executive secretary-treasurer, VIOLA ANDERSON, PEARL PETERSON.

## Beauty of Oregon Captivates Council

National Council met in Portland, Oregon, from June 21-27, 1965, to conduct their annual meeting. Present were the nine officers of Council, the National Executive Secretary-Treasurer and The National Finance Chairman. A full report on the business transacted by Council appears in the 1965 Business Issue of Triangle sent to each chapter. Individual members may obtain a copy by writing the National Executive Office.

Following the meeting of Council, the Board of Directors of the MU PHI EPSILON Memorial Foundation held their annual meeting.

The National Chairman of the 1966 National Convention, Lillian Pettibone, and her steering committee entertained Council and officers at a luncheon at the famed Timberline Lodge, high on the slopes of Mt. Hood, following it with a conference concerning the arrangements for the coming Convention.

On the last day of the meeting the Portland Alumnae, assisted by members of Portland collegiate chapters and patrons, greeted Council members, officers and Memorial Foundation Board members at a reception and tea held in the beautiful Manor House of the Lewis and Clark College.

ACKNOWLEDGMENT is hereby made of photographers of pictures used in this issue: Alfred A. Monner, Portland, Oregon; United Press International, Austin, Texas; Wichita Eagle, Wichita, Kansas; Orval Hixon, Lawrence, Kansas; Sweitzer Studio, Milton, Penna.; C. Joseph Malott, Cincinnati, Ohio; Louise Neuman; Al Winters, Wenatchee, Washington; Chateau Studio, Spokane, Washington; Norton and Peel, Minneapolis, Minnesota; Helen Merrill, Boosey-Hawks; Office of News Services, University of Washington, Seattle; Frances McLaughlin Gill, New York City; Conway Studios Corp., New York City; McLaren and McLaren, Inc., Fredonia, New York; Louis Ouzer, Rochester, New York; Carl Mydens.

## MU PHI EPSILON MEMORIAL FOUNDATION

*for Music  
and Youth...*



**the philanthropic  
services of the  
Memorial Foundation  
include  
grants, donations  
scholarships  
awards**

*Lincoln Center*

*John F. Kennedy  
Cultural Center*

*Los Angeles Music  
Center*

*Sterling Staff  
Concert Series*

*MΦE School of Music  
Gads Hill*

*International Music  
Relations*

*Music Therapy*

*Music for the Blind*

*Aspen*

*Brevard Music Center*

*Music Academy  
of the West*

## Board of Directors Meets in Portland



Important business of the Mu Phi Epsilon Memorial Foundation was conducted by its Board of Directors at a meeting held in June, in Portland, Oregon. The following Directors of the Foundation attended:

*Chairman of the Board:* Bettylou Scandling, New York City

*Vice Chairman:* Lois Ayres Gordon, Wichita, Kansas

*President of the Board:* Rosalie V. Speciale, San José, California

*Vice President:* Beth Kalmbach Shafe, Detroit, Michigan

*National Chairman, Sterling Staff Concert Series:* Claudette Sorel, New York City

*National President, Mu Phi Epsilon:* Janet Adams Wilkie, Seattle, Washington

Also attending the meeting were Agnes W. Helgesson, Los Altos Hills, California, the Secretary-Treasurer of the Foundation, and Eleanor Hale Wilson, Seattle, Washington, Chair-

man of the Finance Committee of the Foundation.

The Memorial Foundation Board allocated a grant of \$1,000 to the Alaska Music Festival for the preparation of study tapes of materials used in the Festival seminars on Eskimo and Indian music. These seminars are conducted at the Alaska Festival each year by Lorraine Koranda, *Tau*, who has collected much of the material. By means of this new MΦE grant, study tapes of this material will be made available to colleges and universities throughout the country.

New scholarships will be offered to members of the sorority at the Brevard Music Center in North Carolina and at the Music Academy of the West at Santa Barbara, California. The scholarship at Aspen will continue to be given.

Plans were set for the 1966 preliminary and final national auditions of the Sterling Staff Concert Series, and for

*Seated, left to right:* ROSALIE SPECIALE, BETTYLOU SCANDLING, JANET WILKIE, CLAUDETTE SOREL; *standing:* BETH SCHAFE, AGNES HELGESSON, LOIS GORDON



announcement of instructions to chapters and members of the sorority. (see page 38)

The Charter Subscriber Plan, announced in the brochures distributed by the Foundation, was further developed. This plan, aimed to allow as many as possible to participate in support of the Foundation, accepts contributions and memorial gifts from chapters, members and friends of the sorority. These contributions may be made in four categories; to make these categories clearer and easier to remember, colors have been assigned to each:

Benefactor . . .	\$1,000 and over	.Gold
Sponsor . . . . .	\$500-\$999	. . . . .Black
Donor . . . . .	\$100-\$499	. . . . .Purple
Friend . . . . .	Any amount less than \$100	. . . . .White

The Charter Subscriber Plan is a cumulative plan covering all contributions and memorial gifts made during the

entire 1964-66 biennium. All amounts given through the biennium will build toward a total amount. A chapter may thus become a contributor in the second year of the biennium, or add to contributions given during the first year and thus build to a higher category.

Individual members, patrons and other friends of the sorority may assign contributions and memorial gifts to the chapter of their choice. At the end of the biennium, all amounts given—either as contributions or as memorial gifts—will be totalled and chapters listed in the category reached. At the August 1966 National Convention the delegate of each chapter will wear the color of its category. By the active support of chapters and friends in spreading knowledge of the work of the Foundation, the continuation and expansion of its services for music and youth may be assured.

### **\$1,000 to Alaska Festival of Music**

Two members of the Board of Directors of the Memorial Foundation attended the tenth anniversary of the Alaska Festival of Music in Anchorage, Alaska, in July. They were Bettylou Scandling, chairman of the board, and Lois Gordon. Lois, a 'cellist with the Wichita Symphony Orchestra, played with the Festival Orchestra. At the conclusion of the last night's concert Bettylou presented a check for \$1,000 to Mr. D. M. Murphy, board chairman of the Festival, and Mary Hale, founder of the Festival and a member of MU PHI EPSILON. The money is for continued research and further study of Eskimo music.

D. M. MURPHY, MARY HALE, BETTYLOU SCANDLING



# MΦE MEMORIAL FOUNDATION

## Sterling Staff Concert Series

### Instruction Sheet 1966

#### PURPOSE

1. To offer opportunities for performance to outstanding young artist members of Mu Phi Epsilon ready for a concert career, as a way to bridge the gap between musical studies and the professional performing field.
2. To allow chapters of the sorority throughout the country opportunity to become acquainted with sorority talent, and give needed experience to these young American artists by sponsoring them in concert appearances.

#### ORGANIZATION

Preliminary and Final National Auditions

#### AWARDS

1. Concert appearances sponsored by chapters of Mu Phi Epsilon throughout the country; all travel expenses paid by the Memorial Foundation and local expenses paid by sponsoring chapters; no fee attached for the performer, but local and national publicity guaranteed.
2. Winners perform at the National Convention of Mu Phi Epsilon in Portland, Oregon, August 27, 1966.

#### ADJUDICATION

1. Preliminary Auditions, judged from tapes, determine which applicants qualify for hearing at Final National Auditions.
2. Judges of high professional caliber select the winner(s) of the Final National Auditions one day prior to the Mu Phi Epsilon Convention.
3. The Memorial Foundation is in no way responsible for the decision of the judges. Therefore, no award(s) will be made if no winner(s) is declared by the judges.

#### ENTRANCE RULES

1. Eligibility
  - a. Auditions open to any initiated member of Mu Phi Epsilon in good standing, except those now under contract with professional management.
  - b. Entrants must be between 18 to 25 years of age (vocalists 18 through 28).
  - c. Entrant must have appeared in solo recital or with orchestra before the public in her community or elsewhere.
  - d. Past National Sterling Staff Concert Series winners are ineligible.
2. Application
  - a. Entrant must file with the National Chairman of the Sterling Staff Concert Series, by midnight, March 15, 1966, the official application blank completely filled and signed, together with:

- (1) a tape recording of at least 30 minutes duration chosen from Repertoire Requirements listed at the end of this outline (should not include concerto requirement for piano and string entrants)
- (2) a glossy photo of the entrant
- (3) a list of concert appearances of the entrant with examples of programs (original programs or typed copies)
- (4) a written recommendation by her teacher indicating entrant is prepared and available to accept professional engagements which may be offered by chapters during the 1966-68 biennium
- (5) entrance fee of \$5.00
- (6) five (5) typewritten copies of complete repertoire chosen from Repertoire Requirements

#### 3. Performance Requirements

- a. Entrant must perform from memory at auditions (except for ensemble work).
- b. Entrant must furnish own accompanist for preliminary auditions, but accompanists will be available in national auditions.
- c. Judges may ask applicants to perform any part of music submitted.

#### PROCEDURE

1. Preliminary National Auditions
  - a. Deadline for submitting tapes to National Chairman is March 15, 1966.
  - b. All applicants will be notified of judges' decisions by May 15, 1966.
2. Final National Auditions
  - a. Will be held in Portland, Oregon, August 27, 1966.
  - b. Auditionists will be notified of having qualified to perform at National Final Audition, with travel and living expenses paid; each will be sent travel checks and room reservations.
  - c. Final winners are to perform during National Convention, August 28, with living expenses extended through performing night.
  - d. Auditions are open to the public.
  - e. Winners are obligated to include acknowledgment of Sterling Staff Concert Series in their publicity.

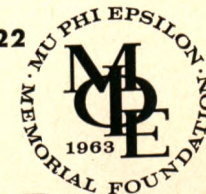
**TO: MU PHI EPSILON MEMORIAL FOUNDATION**  
**26925 St. Francis Drive, Los Altos Hills, Calif. 94022**

I am enclosing a check for \_\_\_\_\_.  
Please list me as a  Benefactor;  Sponsor;  Donor;  Friend  
in the Charter Subscriber list.

I pledge the amount of \$ \_\_\_\_\_ chapter credit \_\_\_\_\_

to be paid in \_\_\_\_\_ installments beginning \_\_\_\_\_

NAME \_\_\_\_\_ ADDRESS \_\_\_\_\_



## STERLING STAFF CONCERT SERIES - 1966

### Instruction Sheet—Repertoire Requirements

#### PIANO

- A. A set piece required of all contestants is:  
One Chopin **Etude** chosen from the following:  
Opus 10 No. 2, 4, 5, 7, 8, 12 *or*  
Opus 25 No. 1, 2, 6, 9, 11
- B. A work of Bach chosen from the following:  
A **Prelude and Fugue** from the Well-Tempered Clavier  
A **Toccat**a  
A **Partita**  
An **English Suite**
- C. A complete **Sonata** of Beethoven chosen from the following:  
Opus 2 No. 3, Opus 10 No. 2, Opus 10 No. 3, Opus 28,  
Opus 31 No. 2, Opus 31 No. 3, Opus 53, Opus 57, Opus 81a,  
Opus 90, Opus 109, Opus 110, Opus 111
- D. A Romantic work chosen from the following:  
Chopin, or Schumann, or Brahms, or Mendelssohn, or Liszt
- E. A **Concerto** of the contestant's choice:  
Either the first movement or the entire work.
- F. An American work to be assigned to the contestant.

#### STRINGS—VIOLIN AND 'CELLO

- A. A set piece required of all contestants is:  
A Paganini **Caprice**—*for Violinists*  
Tschaikowsky's *Rococo Variations*—*for 'Cellists*
- B. A work of Bach:  
At least two movements of any **Sonata**, or **Suite**
- C. A complete **Sonata** by:  
Mozart, or Beethoven, or Brahms *for Violinists*  
Sammartini or Boccherini *for 'Cellists*
- D. A work of the contestant's choice.

(continued)

## STERLING STAFF CONCERT SERIES - 1966 (continued)

### Instruction Sheet — Repertoire Requirements

#### (STRINGS, continued)

- E. A **Concerto** of the contestant's choice:  
Mozart, Viotti, Beethoven, Brahms, Mendelssohn, Bruch,  
Wieniawski, Paganini, Vieuxtemps, etc. *for Violinists*  
Saint-Saens, Dvorak, Haydn, Lalo, Schumann, etc. *for 'Cellists*  
Either the first movement *or* the entire work.
- F. An American work to be assigned to the contestant.

#### WOODWINDS—FLUTE AND OBOE

##### FLUTE

- A. Two **Etudes**—from Anderson, Karg-Elert, Jeanjean, Gariboldi,  
or Voxman, etc.
- B. One **Concerto** chosen from the following:  
Mozart—*Concerto in D or G*  
Boccherini—*Concerto in D*
- C. One **Sonata** by Bach, or Handel, or Loeillet, or Gluck, or  
Hindemith, etc.
- D. A work of the contestant's choice:  
such as the *Suite in A minor* by Telemann or  
*Poems* by Griffes or  
*Sonatine* by Dutilleux etc.
- E. An American work to be assigned to the contestant.

##### OBOE

- A. Two **Etudes**—from Andraud, Barret, Ferling, Loyou, Vade-Mecum,  
or Sabon
- B. One **Concerto** chosen from the following:  
Handel—*Concerto in G minor* or *Concerto Grosso No. 8*  
Guilhaud—*First Concertino*  
De Grandval—*Concerto Op. 7*

(continued)

STERLING STAFF CONCERT SERIES - 1966 (continued)

Instruction Sheet — Repertoire Requirements

(OBOE, continued)

C. One Solo work such as:

- Godard—*Legend Pastorale*
- Handel—*Sonata*
- Loeillet—*Sonata*
- Paladilhe—*Solo de Concert*

D. A work of the contestant's choice

E. An American work to be assigned to the contestant.

VOICE

A. One Aria chosen from the following (must be sung in original key and original language):

1—Coloratura Soprano

- "Bel raggio lusinghier" (*Semiramide*) Rossini
- "Je suis Titania" (*Mignon*) Thomas
- "Der Hölle Rache" (*Die Zauberflöte*) Mozart

2—Lyric Soprano

- "Visse d'arte" (*Tosca*) Puccini
- "Depuis le jour" (*Louise*) Charpentier
- "Leise, leise, fromme Weise" (*Der Freischütz*) Weber

3—Dramatic Soprano

- "Pace, pace, mio Dio" (*La Forza del Destino*) Verdi
- "Divinites du Styx" (*Alceste*) Gluck
- "Dich teure Halle" (*Tannhäuser*) Wagner

4—Mezzo-soprano

- "O don fatale" (*Don Carlos*) Verdi
- "Mon coeur s'ouvre a ta voix" (*Samson et Dalila*) Saint-Saëns
- "Adieu forets" (*Jeanne d'Arc*) Tchaikowsky

5—Contralto

- "Stride la vampa" (*Il Trovatore*) Verdi
- "Che faro senza Euridice" (*Orfeo ed Euridice*) Gluck
- "Seguidilla" (*Carmen*) Bizet (continued)

STERLING STAFF CONCERT SERIES - 1966 (continued)

Instruction Sheet — Repertoire Requirements

(VOICE, continued)

B. An Aria from any of the following:

1. Any Bach **Cantata**
2. Bach: *B minor Mass, St. Matthew Passion*
3. Handel: *Messiah*
4. Haydn: *Creation*
5. Mendelssohn: *Elijah*

C. Two selections in the original language from each group of songs:

1. Italian: by composers such as Durante, Carissimi, Caccini, Cesti, Leo, Paisiello, Pergolesi, Monteverdi, Scarlatti
2. French: from the works of Chausson, Debussy, Duparc, Lully, Faure, Ravel, Poulenc, Milhaud
3. German: from the works of Beethoven, Brahms, Franz, Schubert, Schumann, Wolf, Mahler, R. Strauss

D. An aria or song of the contestant's choice.

E. An American work to be assigned.

Chapters Sponsor SSCS Artists

Congratulations to the seventeen chapters who helped launch the Sterling Staff Concert Series by presenting the first two winners, Lynn Lewis and Virginia Marks, in concerts the first year of the Memorial Foundation's project. These chapters were:

- |  |                            |
|--|----------------------------|
| <i>Omega</i> , Drake University                    | <i>Albuquerque</i>         |
| <i>Mu Theta</i> , University of Texas              | <i>Atlanta</i>             |
| <i>Pi Xi</i> , Baylor University                   | <i>Cincinnati</i>          |
| <i>Alpha Eta</i> , American University             | <i>Fresno</i>              |
| <i>Alpha Iota</i> , Midwestern University          | <i>Kansas City Evening</i> |
| <i>Alpha Mu</i> , Southwest Missouri State College | <i>Miami</i>               |
| <i>Alpha Nu</i> , West Texas State College         | <i>Milwaukee</i>           |
| <i>Alpha Pi</i> , Southwest Texas State College    | <i>Riverside</i>           |
| <i>Alpha Xi</i> , University of North Carolina     |                            |

Nineteen additional chapters have engaged the young pianists for recitals the coming year, and requests are still being filled. To become a SSCS Sponsoring Chapter, write now for a booking to:

Claudette Sorel, National Chairman  
 333 West End Avenue, New York, N.Y. 10023  
 Deadline: December 15, for January through May bookings.

# MΦE MEMORIAL FOUNDATION

## Honorary Board of Directors



WILLIAM BERGSMA

**WILLIAM BERGSMA**, composer, educator  
 B.A., M.A., Eastman School of Music . . . Phi Beta Kappa . . . Associate Dean of Juilliard School of Music, 1961 . . . **Director of School of Music, University of Washington, 1963—** . . . Two Guggenheim Fellowships; Columbia Records Chamber Music Award; Bearn's Prize, Columbia University; Citation from Music Library Association; James D. Phelan Award; Grant from National Institute of Arts and Letters and American Academy of Arts and Letters . . . Board of Directors of the Composers Forum; Advisory Council, American Music Center.



MRS. ANTHONY A. BLISS

**MRS. ANTHONY A. BLISS**  
 University of Washington; Columbia University . . . Actress of screen, stage, radio, television . . . Vice president of Greater New York Chapter, Inc., American National Theatre and Academy, 1962; Board of Directors, American National Theatre and Academy, 1965; President, Long Island Little Orchestra Society; Chairman of Board of Associate Trustees, Long Island Arts Center, Inc., 1964 . . . Trustee, Hofstra University, 1965 . . . Wife of Anthony A. Bliss, President of Metropolitan Opera Association, New York City.



JOHN BROWNLEE

**JOHN BROWNLEE**, baritone, educator  
**Director of Manhattan School of Music, 1956—** . . . Mus. D. College-Conservatory of Cincinnati . . . Distinguished international career in opera . . . President, American Guild of Musical Artists; Committee on Music, UNESCO, of National Music Council; Central Opera Service; Advisory Committee on the Arts; International Cultural Exchange Program Committee.

**PAUL CRESTON**, composer, organist

**Organist at St. Malachy's, New York City, 1934—** . . . Guggenheim Fellowship for composition, 1938-39; Citation of Merit, National Association American Composers and Conductors 1941, 1943; Music Award American Academy of Arts and Letters, 1943; New York Music Critics Award, 1943; Alice M. Ditson Award, 1945; Federation of Music Clubs Award, 1947; Music Library Association Award, 1948 . . . Life Fellow International Institute of Arts and Letters; President, National Association of American Composers and Conductors; Board of Directors ASCAP, 1960; National Music Council Executive Committee . . . Composer of more than thirty orchestral compositions . . . Lecturer at universities and colleges in United States and abroad. . . Author of text books, "Principles of Rhythm," "Creative Harmony." . . . Latest collection of rhythmic studies, "Rhythmicon."

PAUL CRESTON



**HOWARD HANSON**, composer, conductor, educator

Mus.B., Northwestern University . . . Phi Beta Kappa . . . Dean of Conservatory of Fine Arts, College of Pacific, 1919-21 . . . Director of Eastman School of Music, University of Rochester, 1924-64. . . Dr. Hanson holds honorary degrees from twenty-six universities, colleges and conservatories including: Mus.Doc. (*honoris causa*) from Northwestern University, 1924; Syracuse University, 1928; University of Nebraska, 1935; American Conservatory of Music, 1939; Columbia University, 1946; Hartt College of Music, 1952; New England Conservatory of Music, 1956; Temple University, 1958; Newcomb College, Tulane University, 1959; University of Michigan, 1960 and Boston University, 1964. . . His honors and awards have been many and have included: Winner, first American Prix de Rome Competition, 1921; Fellow, Royal Academy of Music in Sweden 1938; Pulitzer Prize for Symphony No. 4, Opus 34, 1944; Alice M. Ditson Award 1945; George Foster Peabody Award 1946; Rochester Civic Medal, Rochester Museum of Arts and Science 1948; Freedom Award for radio series 1956; National Federation of Music Clubs Citation 1957; Laurel Leaf awarded by American Composers Alliance 1957; Huntington Hartford Foundation Award 1959; Annual Music Medal of Honor of National Arts Club, 1962; Citation from Music Educators National Conference 1962; Citation from Mu Phi Epsilon 1964 and Phi Beta Kappa Visiting Scholar, 1964-65. . . He has served as officer and member of numerous committees including: President, National Association of Schools of Music (8 years), Music Teachers National Association, National Music Council (since 1944); U.S. Commission for UNESCO, 1946-48, 1957-59, 1960-62; Consultant, U.S. Department of State; Advisory Committee of the Arts of the National Cultural Center, Washington, D.C., 1960; American Academy of Arts and Science, 1961 and Executive Committee for UNESCO, 1961. . . Dr. Hanson has been guest conductor for many symphony and philharmonic orchestras in the United States and abroad.



HOWARD HANSON





WALTER HENDL

**WALTER HENDL**, conductor, pianist, educator

Mr. Hendl is a graduate of the Curtis Institute of Music . . . Faculties of Sarah Lawrence College and Juilliard School of Music . . . **Director, Eastman School of Music, University of Rochester**, 1964— . . . Honorary Doctorate from Cincinnati Conservatory of Music, 1954 . . . Conductor of Dallas Symphony Orchestra, 1948-58, Chautauqua Symphony Orchestra, 1953—, Chicago Symphony's Youth Concerts; Associate Conductor of Chicago Symphony under Reiner; Assistant Conductor New York Philharmonic under Rodzinski . . . Music Director of Ravinia Music Festival, and Caramoor (N.Y.) Festival . . . Guest conductor of many of the leading orchestras in United States and abroad . . . Conducted the NBC Symphony's 1955 tour of the Far East under State Department sponsorship . . . Alice M. Ditson Award, 1954 . . . As a pianist Mr. Hendl has appeared with leading symphony orchestras and has recorded for RCA.

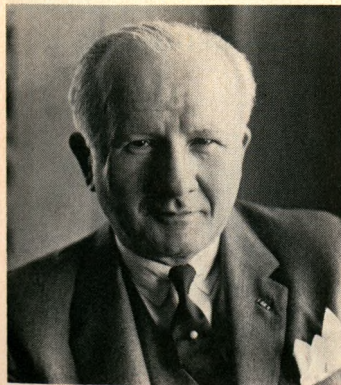


MRS. LYTLE HULL

**MRS. LYTLE HULL**

Director of Lincoln Center for the Performing Arts, N.Y.C. . . . Director and vice president of City Center of Music and Drama, N.Y.C. . . . Director of New York Philharmonic Orchestra . . . Director of Musicians Emergency Fund.

WILLIAM HITZIG



**WILLIAM MAXWELL HITZIG, M.D.**, internist

A.B., Columbia College; M.D., Cornell University Medical College . . . Fellow of the Academy of Medicine, Fellow of the American College of Physicians . . . Police Surgeon of the City of New York . . . American Heart Association, American Society of Internists, American Medical Association . . . Associate Attending Physician of the Mount Sinai Hospital, N.Y.C., Assistant Professor of Clinical Medicine, Columbia University . . . Consultant to the Hiroshima Atomic Bomb Treatment Council, Consultant to the Ravensbrueck Lapins Project, Consultant to the Flushing Hospital, N.Y.C. . . . Author of many medical articles and lecturer . . . Physician with a local, national and international practice whose patients have included Nehru, King Peter of Yugoslavia, Albert Schweitzer, Pablo Casals etc.

**MME. OLGA KOUSSEVITZKY**

President, Koussevitzky Music Foundation, 1951; President, American International Music Fund, 1956; President, Musicians Club of New York, 1961 . . . Medal of Honor, National Arts Club of New York, 1953 . . . Contributed articles on Serge Koussevitzky to Ed Murrow, 1951; Saturday Review of Literature, 1954 . . . Sketches of musicians in *Bravo*, 1962-63 . . . Illustrations of "Little Night Music" by Sam Chotzinoff, Harpers, 1964 . . . Born Olga Naumoff, in Russia, came to United States in 1929 and was naturalized in 1941; married Serge Koussevitzky in 1947.

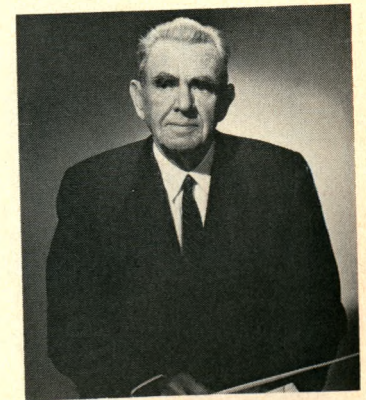
MME. KOUSSEVITZKY



**JOSEPH EDGAR MADDY**, educator

Honorary Doctor of Music degrees from Cincinnati Conservatory of Music, 1930, University of Rochester, 1959, Baldwin-Wallace College, 1960, University of Michigan, 1964; Honorary Doctor of Fine Arts from Hillsdale College, 1964; Honorary Doctor of Laws from Franklin College, 1964 . . . Professor of Music, University of Michigan, 1924-1962 . . . Fellow, International Institute of Arts and Letters, 1962 . . . President, Music Educators National Conference, 1936-38 . . . Received "The American Education Award for 1959" by Associated Exhibitors of the National Education Association; Finlandia Foundation Arts and Letters Award, 1962 . . . Member of National Music Council, Michigan Cultural Commission, Music Executive Committee, President's "People-to-People," Program 1961 . . . Founded **National Music Camp**, Interlochen, Michigan, 1928; established **International Arts Academy**, 1962; initiated Michigan Youth Arts Festival, 1963 . . . Has been cited for outstanding service to American Youth and American Music by seven national organizations, including the National Federation of Music Clubs, 1957 and ASCAP, 1963 . . . Developed first complete symphony orchestra in any American high school (Richmond, Indiana,) 1920-24; organized and conducted All-State high school orchestras and bands in 30 states since 1923; conceived, organized and conducted first National High School Orchestra, Detroit, 1926, followed in succeeding years by others . . . Developed many innovations in teaching of instrumental music and music subjects in public schools . . . Invented aluminum violin and string bass, 1929-30 . . . Conceived, edited and published numerous textbooks and materials used in music education, 1922-61.

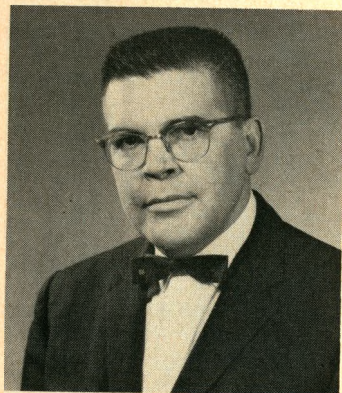
JOSEPH E. MADDY



**MRS. KATHRYN STERLING MAISH**

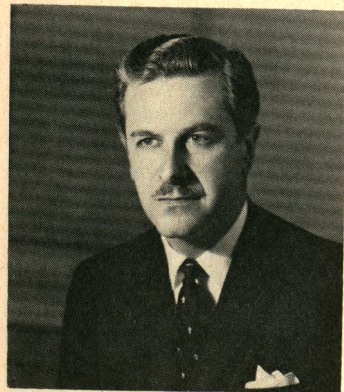
Distinguished member of Alpha chapter of MU PHI EPSILON and niece of MΦE founder, Dr. Winthrop S. Sterling. . . Mrs. Maish did much to further the sorority in its early days.

ROBERT MARVEL



**ROBERT MARVEL**, composer, educator

B.A., University of San Antonio; M.A., Ph.D., Eastman School of Music, University of Rochester . . . **Director of Music Department, State University of New York, Fredonia, N.Y.** . . . His chamber music compositions are widely performed, and his orchestral works have been programmed by the Eastman-Rochester Symphony, the Erie Philharmonic and the Montreal Symphony . . . For two years a member of the consulting committee for the Ford Foundation-National Music Council Young American Composers Project . . . Is active in music educators' organizations; is President of the Eastern Division of M.E.N.C. for biennium 1963-65.



PETER MENNIN

**PETER MENNIN**, composer, educator

B.M., M.M., 1945, Ph.D., 1947, Eastman School of Music, University of Rochester . . . **President, Juilliard School of Music, 1962—** . . . Director, Peabody Conservatory of Music, 1958-1962 . . . His compositions are widely performed and commissions include Koussevitzky Music Foundation; Coolidge Foundation-Library of Congress; League of Composers; ABC and NBC networks; Juilliard Musical Foundation; National Federation of Music Clubs; Cleveland, Louisville and Dallas Symphony Orchestras; Women's Committees of Major Symphony Orchestras and others . . . Honors: first recipient of Gershwin Memorial Award; American Academy of Arts and Letters; Guggenheim Memorial Foundation; Naumburg American Music Recording Award; Columbia Records Chamber Music Award; Centennial Citation from University of Rochester; Bears Prize and others . . . Board of Directors, American Music Center; Composers Forum; President, Walter W. Naumburg Foundation; member, Lincoln Center Council.

**HERMAN NEUMAN**, conductor

Associated with the Municipal Broadcasting System of the City of New York for many years; conceived idea for famed "Masterwork Hour," the first recorded serious music program of its kind, thus making WNYC a pioneer in "good music" . . . Pioneered in International Music Exchange with "Hands Across the Sea" . . . Honors: Order of Dannebrog, Denmark; St. Olaf Medalion, Norway; Order of Vasa, first class, Sweden; Order of the Finnish Lion, Finland . . . Conductor of American Music programs with radio Symphony Orchestras of Norway, Sweden, Denmark, Finland, Poland, Czecho-Slovakia, Austria and others . . . Co-ordinator of annual WNYC American Music Festival . . . President, National Association for American Composers and Conductors.



HERMAN NEUMAN

**MRS. ELIZABETH STERLING PIERLE**

Distinguished member of Alpha chapter of MU PHI EPSILON and niece of MΦE founder, Dr. Winthrop S. Sterling. . . Mrs. Pierle did much to further the sorority in its early days.



GYORGY SANDOR

**GYORGY SANDOR**, pianist, educator

Attended Ferenc Liszt Conservatory, Budapest, 1927-1933; student of Bartok and Kodály . . . Came to United States in 1938, naturalized in 1943 . . . Directs doctoral program in performance (piano) at University of Michigan . . . Honors: "Grand Prix du Disque" for his recording of "the entire oeuvre of piano music" by Bartok . . . Concertizes extensively and internationally; has made numerous recordings as soloist and with various Symphony Orchestras.

WILLIAM SCHUMAN

**WILLIAM SCHUMAN**, composer, educator

B.S., 1935, M.A., 1937, Columbia University . . . **President, Lincoln Center for Performing Arts, 1962—**; President, Juilliard School of Music, 1945-1962; faculty, Sarah Lawrence College, 1935-1945; Special Publications Consultant to G. Schirmer, Inc., 1945-1951; Director of Publications, G. Schirmer, Inc., 1944-45 . . . Honorary degrees: Doctor of Music from nine colleges and universities including Columbia University, 1954, and New York University, 1962; Honorary Member, Royal Academy of Music, 1959; Doctor of Humane Letters: Colgate University, 1960, Brandeis University, 1962, Dartmouth College, 1962; Doctor of Fine Arts, Adelphi University, 1963, Northwestern University, 1963 . . . Fellow, National Institute of Arts and Letters; American Academy

(continued)



of Arts and Sciences . . . Director, Koussevitzky Music Foundation; Walter W. Naumburg Foundation; Composers Forum . . . Chairman, Board of Judges, Student Composers Awards- Broadcast Music, Inc.; vice chairman, United States Delegation, UNESCO . . . Many prizes and citations, including: Guggenheim Fellowship 1939-1941, 1950-51; New York Critics Circle Award, 1941-42; first Pulitzer Prize for Music, 1943; Award, National Institute of Arts and Letters, 1944; first Brandeis University Creative Arts Award in Music, 1957, etc. . . . Mr. Schuman's many compositions include orchestral, choral, chamber music, band, piano, and theater (dance, opera and film) works, and among those recorded are *Symphonies Nos. 3, 6, 8*; *String Quartet No. 3*, and *Judith*. Commissions have been from the Elizabeth Sprague Coolidge Foundation-Library of Congress; Koussevitzky Music Foundation, Inc.; United States National Commission for UNESCO through the Department of State; Ford Foundation for Leonard Rose; and a number of symphony orchestras.

GIDEON WALDROP



**GIDEON WALDROP**, composer, educator

B.M., Baylor University; M.M., Ph.D., Eastman School of Music, University of Rochester . . . Assistant to the President of Juilliard School of Music, 1961-63; **Dean, Juilliard School of Music**, 1963— . . . Compositions include orchestral, choral, chamber and vocal works . . . Commissions from San Antonio Symphony Society . . . Editor, *Musical Courier*, 1953-58 . . . Music Consultant, Ford Foundation, Young Composer- Public School Project, 1958-1961.



GENE BRUCK

**GENE BRUCK**

A.B., Columbia University . . . **Coordinator of Concert and Symphonic Repertory, ASCAP** . . . Studied oboe and piano at Juilliard School of Music . . . Lecturer in Contemporary Music at New York University . . . Critic for *High Fidelity-Musical America* . . . Host, national radio program "Musicians Backstage." . . . Board member of the Composers Forum, Composers Recordings, Inc., and Music in Our Times . . . Board of Advisers for the American Music Center, New York Choral Society, and American Symphony Orchestra . . . Vice president of the National Association of American Composers and Conductors . . . he was formerly Music and Program director of WBAI-FM (Pacific Foundation), New York; music director of WGBH-FM (Lowell Institute), Boston; director, Phototapes, Inc., N.Y.Cy.

# Book Shelf

Trudi Sorensen

Phi Iota—San Francisco

**AM I TOO LOUD?** By *Gerald Moore*. Macmillan, 1962 (288 pp., \$4.95)

Once again Gerald Moore, distinguished English musician and world-famous accompanist, treats us to his literary talent. "Am I Too Loud?" is a cleverly written autobiography, abounding in humor and wit as well as knowledge. The reader will emit many an audible chuckle as he reads of the experiences of Mr. Moore, as for instance, when he became cinema organist in Toronto with the stipulation that the tremolo stop, which he hated, was to be used at all times. "Coupled with the *vox humana*, it produced a noise like the bleatings of a flock of sheep. I employed this combination *ad nauseam* . . . I held down this job for months and months. Everyone was delighted with me. You cannot go wrong with the tremolo and the *vox humana*."

To the English singer, John Coates, Moore gives his highest tribute: the man who "taught me all I know about accompanying." As his accompanist, he went through a rigid routine of work and tongue-lashing, learning the meaning of the piano part and how to express it.

Much of the book consists of miniature biographies of the great musicians with whom he has worked. These are wonderful little insights into their lives and character. Solomon "was my hero, the ideal pianist—on whom I modeled myself." Rheinhold von Warlich sang everything in so low a tonality that "I shifted it (piano stool) six inches below dead center of my keyboard for greater comfort." Chaliapin, a rather egotistical tyrant, was known to have even walked off the stage while his pianist was playing the postlude of a Schumann lied. Elena Gerhardt, on the contrary, treated the accompanist as the supporting artist he must be. "Never be too discreet . . . the voice and piano in these songs are of equal importance." Maggie Teyte, Elisabeth Schwarzkopf, John McCormack, Dietrich Fischer-Dieskau, Kathleen Ferrier, Joseph Szigetti—so the list continues.

Moore's experiences in the recording industry are not only amusing but also historical, following the development from cylinder to disc, from trumpet to microphone.

The book reveals the attributes and requirements of an accompanist. He must know when to advise and when to accept advice, "when to attack and when to retreat." He must be a diplomat. He must be a critic. He must have the technical know-how to achieve the desired result. And he must have the ability to transpose. Moore tells a marvelous story of having to transpose a song a tone down for a singer who was frightened of a top A flat. It was not difficult except for a middle section of constant modulation. "At the performance I embarked on the transposed song with quiet confidence, but when I approached this dark forest of quick-moving double-sharps and double-flats, I became nervous—in fact, I lost myself. I beat and hacked my way through the undergrowth and got entangled. When I emerged breathless into the clearing I found, to my horror, that I was now playing the accompaniment not one tone *lower*, but one tone *higher* than the original key. This nearly killed my colleague, for he now had to sing a top B flat instead of the G flat he had bargained for. A nasty, guilty feeling still steals over me when I recollect his bulging eyes, swelling neck, and the awful noise he made as he flung himself, like a fish out of water, at a note that was beyond his reach. This was the end of a beautiful friendship." Don't resist reading this book!

## STRÉTTO

**FIVE OPERAS AND RICHARD STRAUSS.** By *Lotte Lehmann*. (Translated from the German by Ernst Pawel). Macmillan, 1964 (209 pp., \$5.)

This is a delightful book full of personal reminiscences, anecdotes, and discussions of the five operas in which Mme. Lehmann took leading roles: *Die Frau ohne Schatten*, *Der Rosenkavalier*, *Ariadne auf Naxos*, *Arabella*, and *Intermezzo*. Under the composer's tutelage, insights into the personality of the characters and their relationships to each other, thus giving the musical world stirring, inspiring performances of works by a great twentieth century composer and conductor.

**A LITTLE NIGHT MUSIC.** By *Samuel Chotzinoff*. Harper, 1964 (151 pp., \$5.)

As music critic and creator of the NBC Opera Company, Mr. Chotzinoff has put together a charming little book for both the music lover and the student. By way of conversations, the personalities, feelings, opinions and ideas about music of some of our famous musicians are revealed: Leontyne Price, Richard Rodgers, Jascha Heifetz, Vladimir Horowitz, to mention but a few.

**A HISTORY OF WESTERN MUSIC.** By *Donald J. Grout*. Norton, 1964 (515 pp., \$7.75)

Here is a shortened edition of the original 1960 standard history of musical style. Illustrations, musical examples and bibliographies have been partially eliminated or condensed in order to keep most of the text, and the reader's interest.

**THIS IS MUSIC.** By *David Randolph*. McGraw, 1964 (274 pp., \$6.50)

Another book for the young adult or layman who wants to know more about serious music. Mr. Randolph, well-known choral conductor and lecturer, urges the reader to enjoy music simply for itself. However, as a guide to listening, he does elaborate on the five elements of music: melody, harmony, rhythm, tone color and form.

**WHITE SPIRITUALS IN THE SOUTHERN UPLANDS.** By *George Pullen Jackson*. (Intro. by Don Yoder). Folklore Assoc., 1964 (444 pp., \$10.)

As the sub-title of the book states, this is the "Story of the Fasola Folk, Their Songs, Singing and 'Buckwheat Notes'." Mr. Jackson's research took him from New England origins to Negro spirituals, a fascinating trek.

**TOM GLAZER'S TREASURY OF FOLK SONGS.** By *Tom Glazer*, composer. (Illus. in color by Art Seiden). Grosset, 1964 (253 pp., \$4.50)

If you have a need for some hootenanny material, perhaps this book can fill the bill. The collection has variety plus, and includes notes on the origins of the songs. For children in grades 3-6.

### For the Early Christmas Shopper

**The Magic Bagpipe** by *Gerry and George Armstrong*. Albert Whitman. 1964 (\$2.75) (Grades 2-4)

**Folk Songs of China, Japan, Korea** ed. by *Elisabeth Dietz and Thomas Park*. Day. 1965 (47 pp. & phonodisc; \$4.50) (Grades 4-6)

**Horns** by *Larry Kettelkamp*. Morrow. 1964 (48 pp; \$2.75) (Grades 4-7)

**Anvil Chorus: The Story of Giuseppe Verdi** by *Helen L. Kaufman*. Hawthorne. 1964 (185 pp; \$2.95) (Grades 5-7)

**The Ring** by *John Updike*. Music by Richard Wagner. Knopf. 1964 (30 pp; \$3.50) (Grades 5-8)

**Treasury of Folk Songs** comp. by *Tom Glazer*. Grosset. 1964 (253 pp; \$4.95) (For all ages)

**Frederic Chopin** by *Victor Seroff*. Macmillan. 1964 (118 pp; \$3.50) (Grades 5-9)

Books for Junior High and up:

**Pablo Casals, Cellist For Freedom** by *Aylesa Forsee*. Crowell. 1965 (256 pp; \$4.50)

**The Waltz King: Johann Strauss, Jr.** tr. by *Theodore McClintock*. Rand. 1965 (168 pp; \$3.50)

**Wolfgang Amadeus Mozart** by *Victor Seroff*. Macmillan. 1965 (128 pp; \$3.50)

**Seven Stages** by *Geoffrey Trease*. Vanguard. 1965 (192 pp; \$3.95)

**American Modern Dancers: The Pioneers** by *Olga Maynard*. Little. 1965 (218 pp; \$4.50)

**Famous Instrumentalists** by *David Ewen*. Dodd. 1965 (160 pp; \$3.25)

**Musical Instruments Of Africa** by *Betty Dietz and Michael Olatunji*. John Day. 1965 (128 pp.)

(continued on page 55)

## Record Review

Margaret Claire Motter  
*Mu Delta—Wichita*

**SCARLATTI:** Horowitz plays Scarlatti. Twelve Sonatas selected by Horowitz. MS 6658, Stereo, ML 6058, Mono.

A Horowitz recording is a history-making recording. In the words of the composer, "show yourself more human than critical, and then your pleasure will increase." Horowitz chose these 12 *Sonatas* from 550. This is not the cream of the crop, but the whipped cream. Every mood of Scarlatti is represented, moods which are not ordinarily attributed to him. The Horowitz touch displays every emotion which the composer wished interpreted. Originally written for harpsichord it is evident that the piano can be an authentic interpreter of this type of music without losing the identity of harpsichord music. This is concert music which for so long was not used by artists. The prediction by Chopin that Scarlatti would be used on the concert stage has arrived, and Horowitz has confirmed this prediction with these sonatas.

**KHACHATURIAN:** Piano Concerto  
**BLOCH:** Scherzo Fantastique Hollander, Previn, Royal Philharmonic Orchestra. RCA Victor LSC 2801 Stereo, LM 2801 Mono.

Lorin Hollander has more than arrived in his playing of this concerto under the conducting of Andre Previn. Two new artists on the RCA label. Hollander is the young giant of the keyboard when he plays and interprets as he does in this recording that leaves not a note unplayed. The premier recording of the *Scherzo* lets us know that we have been missing something in modern piano literature.

**DEBUSSY:** Pelléas et Mélisande Erna Spoorenberg, Camille Maurane, George London, Ansermet and Orch. Suisse Romande. London OSA 1379 Stereo, A 4379 Mono.

Of all the recordings of this opera, this is probably the superb edition. Spoorenberg



*Wichita Alumnae* Scholarship winners: SUSAN HOLLOWELL, ΦII, RACHEL YORK, AX, CHARLOTTE SOOTER, ΕΦ, GWIN CASSITY, ΦII.



*Wichita Alumnae* Chapter Chorus

is a singer you will want to hear more of, her recordings and interpretations, if this is a sample of her artistry. The other members of the cast meet her standards.

May I introduce you to a budget line, the Nonesuch label, retailing at \$2.50, Stereo or Mono. The music literature is baroque, but they are now beginning to release other types. The unusual can be found, the recordings are of good quality, and the artists are of the best.

**ROBERT SCHUMANN:** Konzertstück in F for 4 Horns and Orchestra, Opus 86. Konzertstück for Piano and Orchestra in G Major, Opus 92. H 71044 Stereo, H 1044 Mono.

Highly recommended. Compositions for French Horns are rarely recorded. This one is fiery and also melodious.

## Awards Contests Competitions

Viola Moen Anderson  
National Sixth Vice-President

**GRASS ROOTS OPERA NATIONAL COMPETITION:** Michigan Federation of Music Clubs, in recognition of "Grass Roots Opera" suitable for use in music clubs. For unpublished one-act score using women's voices, with or without chorus. Dr. Barre Hill, Interlochen, Mich.

**BRUSSELS INTERNATIONAL CONTEST FOR SINGERS:** May 1966. Solos, men and women. Age limit 32 at date of contest. Last date of application, February 1, 1966. Les Amis de Mozart, 39, rue Fritz-Toussaint, Bruxelles 5 Belgium.

**BROADMAN PRESS ANTHEM COMPETITION:** Composers to direct their abilities toward choral music for the average church. Broadman Anthem Corporation, 127 Ninth Avenue, N., Nashville 3, Tenn.

**BROADCAST MUSIC, INC.:** Student Composer's Award. Applicant must be under 26 on December 31, 1964. No limitations as to instrument or length. Oliver Daniel, Director SCA Project, Broadcast Music, Inc., 589 Fifth Avenue, New York, N.Y. 10017.

**AMERICAN OPERA AUDITIONS:** Talented American singers to appear as principals in a debut opera performance in Milan, Italy. American Opera Auditions, 4511 Carew Tower, Cincinnati, Ohio.

**AMERICAN ACADEMY IN ROME:** A limited number of Fellowships for mature students and artists for musical composition. American Academy in Rome, 101 Park Ave., N.Y., N.Y.

**MEDORA A. FEEHAN CATHOLIC CHURCH MUSIC AWARDS:** Copies of the proposed texts and official entry forms can be secured from the Liturgical Music Commission, 111 Boulevard of the Allies, Pittsburgh, Pa. 15222

**NATIONAL FEDERATION OF MUSIC CLUBS:** For the many competitions, scholarships and prizes offered write to the NFMC office, 600 So. Michigan Ave., Suite 1215, Chicago 5, Ill.

**VAN CLIBURN INTERNATIONAL PIANO COMPETITION:** September 26, 1966, Fort Worth, Texas. Mrs. Grace Ward Lankford, 2211 West Magnolia Ave., Fort Worth, Texas. 76110

**SPOLETO FESTIVAL COMPETITION FOR CREATIVE ARTS:** New chamber music work. Spoleto Festival Competition, Boston University, School of Fine Arts, 855 Commonwealth Ave., Boston 1, Mass.

**JOHN SIMON GUGGENHEIM MEMORIAL FOUNDATION:** Fellowships to scholars and artists for musical research. John Simon Guggenheim Memorial Foundation, 551 Fifth Ave., N.Y. 17, N.Y.

**MARJORIE MERRIWEATHER POST STUDENT COMPETITION:** For piano, violin. Write M. Robert Rogers, National Symphony Orchestra, 2101 16th S. N.W., Washington, D.C.

**HUNTINGTON HARTFORD FOUNDATION COMPOSITION FELLOWSHIPS:** Fellowships in Musical Composition open to U.S. citizens and foreign-born permanent

residents who have applied for citizenship. Huntington Hartford Foundation, 2000 Rustic Canyon Rd., Pacific Palisades, Calif.

**SALZBURG OPERA PRIZE:** For full information write Herrn Wilfried Scheib, Executive Secretary, Internationales Musikzentrum-Wien, Lotringerstrasse 18, Vienna III, Austria.

**ROTH ORCHESTRA COMPETITION CONTEST:** Sponsored by the National School Orchestra Association. Sam Mages, NSOA Composition Contest Chairman, 1229 Ash St., Winnetka, Ill.

**HATTIE M. STRONG FOUNDATION:** Student loan fund. Students must be within two years of their final degree from college: must be American or naturalized students staying in this country. Fields unrestricted. Hattie M. Strong Foundation, 409 Cafritz Building, 1625 Eye Street N.W., Washington, D.C. 20036.

**NATIONAL DEFENSE PROGRAM:** Student Loan Programs. Fields unrestricted. Write Student Financial Aid Branch, Division of College and University Assistance, Office of Education, U.S. Department of Health, Education and Welfare, Washington, D.C. 20202.

**DANFORTH FOUNDATION:** *Kent Fellowships.* Open to men and women, preferably under thirty, who have completed some graduate study and seek the doctorate, and who intend to teach at the college level. Fields unrestricted. Dr. James Swift, 607 North Grand Boulevard, St. Louis 3, Mo.

**ILLINOIS OPERA GUILD AUDITIONS OF THE AIR:** Sponsored by WGN Radio Station, Chicago. Nationwide competition for operatic vocal artists (20-35 years of age). Deadline for entries October 15, 1965. Write for details, rules and audition blanks: Opera Guild Auditions Board, WGN, Inc., 2501 Bradley Place, Chicago, Ill. 60618.

*Further information may be obtained from the address of each.*

**EDITOR'S NOTE:** Collegiate and Alumnae Tempo sections will continue in December issue.

### BOOK SHELF

*(continued from page 52)*

Books for Young Adults & Adults

**A Little Nightmusic** by Samuel Chotzinoff. Harper. 1964 (151 pp; \$5.00)

**This Is Music** by David Randolph. McGraw. 1964 (274 pp; \$6.50)

**Albert Schweitzer's Gift Of Friendship** by Erica Anderson. Harper. 1964 (152 pp; \$4.95)

**The Life And Death Of Tin Pan Alley: The Golden Age Of Popular Music** by

Katherine White, *Seattle*, MPE travel consultant, is arranging pre- and post-convention tours to Alaska and Honolulu. 1966 Convention location is part way to either place. Details in next issue. Plan now.

**David Ewen. F. & W.** 1964 (380 pp; \$4.95)

**The Jazz Story: From The '90's To The '60's** by Dave Dexter, Jr. Prentice-Hall. 1964 (176 pp; \$4.95)

**The Joan Baez Songbook** arr. and intro. by Elie Siegmeister. Ryerson Pub. distr. by Crown. 1964 (189 pp; \$5.95. Paper \$3.95)

**The Songs We Sang: A Treasury Of American Popular Music** ed. by Theodore Rapp. Barnes 1964 (406 pp.)

# Directory

MU PHI EPSILON was founded at the  
Metropolitan College of Music in Cincinnati, Ohio, on November 13, 1903

## FOUNDERS

DR. WINTHROP S. STERLING, died November 16, 1943  
ELIZABETH MATHIAS FUQUA (Mrs. John W.), died May 17, 1950

## PAST NATIONAL PRESIDENTS

Elizabeth Mathias Fuqua,\* A, 1904-05, 07, 08  
Myrtal Palmer Leach,\* F, 1905-07  
Elfrida Langlois Kent,\* Δ, 1908-11  
Alice Davis Bradford Peck,\* A, 1911-13  
Ora Bethune Johnson,\* Θ, 1913-15  
Mary Towsley Pfau,\* A, 1915-16  
Roxielettie Taylor Yeates (Mrs. John), Θ, 1119 Rumsey Ave., Cody, Wyo., 1916-17  
Harriet Thompson Wright,\* X, 1917-20  
Doris Benson (Mrs. Walter), 1A, Spikeswood Farm, Woodruff, Wis., 1920-22  
Persis Heaton Trimble,\* MA, 1922-26  
§Lucille Eilers Brettschneider (Mrs. August, Jr.), A, 3426 Morrison Place, Clifton, Cincinnati, Ohio, 1926-28  
Orah Ashley Lamke (Mrs. Geo. W.), Δ, R.R. 3, Box 245-D, Golden, Colo., 1928-30  
Bertha M. (King) Van Tilburg, ME, 1930-32, 34-40  
§Dorothy Elizabeth Paton, F, 999 Center St., Douglas, Mich. 49406, 1932-34  
Elizabeth Ayres Kidd (Mrs. A. Eugene, Jr.), ME, 1553 Hawthorne Lane, Glenview, Ill. 60025, 1940-42  
Ava Comin Case,\* 1942-48  
Dr. Margarette Wible Walker, MN, 1675 Sunset Cliffs Blvd., San Diego, Calif. 92107, 1948-50  
Ruth Row Clutcher (Mrs. John), O, R.D. 1, Selinsgrove, Pa. 17870, 1950-54  
Eleanor Hale Wilson (Mrs. P. Raymond), T, 2800 39th Ave. W., Seattle, Wash. 98199, 1954-58  
§Rosalie V. Speciale, ΦM, 560 North First, San Jose, Calif. 91512, 1958-62  
Janese K. Ridell, MT, 1507 29th Ave. Court, Greeley, Colo., 1962-64

§ Honorary Advisory Board, Executive Committee

\* deceased

## NATIONAL COUNCIL 1964-1966

National President, Janet Adams Wilkie (Mrs. Richard F.), T, 5744 34th Ave. N.E., Seattle, Wash. 98105  
Nat'l First Vice-President (North Central Province Governor and Extension); Willa Beckham Lowrance (Mrs. R. S., Jr.), M Ω, 1184 Hancock Dr., N.E., Atlanta, Ga. 30306  
Nat'l Second Vice-President (South Central Province Governor and Collegiate Adviser); Lois Ayres Gordon (Mrs. Russell E.), Φ II, 321 N. Woodlawn, Wichita, Kan. 67208  
Nat'l Third Vice-President (Great Lakes Province Governor and Alumnae Adviser); Madge Cathcart Gerke (Mrs. Frank E.), K, 5003 N. Seville Dr., Indianapolis, Ind. 46208  
Nat'l Fourth Vice-President (Pacific Southwest Province Governor and Music Adviser); Ann Blundell Scammon (Mrs. E. W.), M E, 4695 Francis Ct., Sacramento, Calif. 95822  
Nat'l Fifth Vice-President (East Central Province Governor and Eligibility Adviser); Virginia Hoogenakker, E F, 3304 W. Capitol St., Jackson, Miss. 39209  
Nat'l Sixth Vice-President (Pacific Northwest Province Governor and Contests Adviser); Viola M. Anderson (Mrs. Henry O.), Φ I, 1038 North First St., Fargo, N.Dak. 58102  
Nat'l Seventh Vice-President (Atlantic Province Governor and Public Relations Adviser); Dr. Merle Montgomery, M T, 120 East 36th St., New York, N.Y. 10016  
Nat'l Editor: Pearl Allison Peterson (Mrs. Howard M.), Φ N, 220 Greenstone Dr., Reno, Nev. 89503

## NATIONAL EXECUTIVE OFFICE (N.E.O.)

Nat'l Executive Secretary-Treasurer: Virginia Porter Fiser (Mrs. Van E.), Ξ, 1139 N. Ridge-wood Dr., Wichita, Kans. 67208

## MU PHI EPSILON MEMORIAL FOUNDATION

President: Rosalie V. Speciale, 560 North First, San Jose, Calif. 91512  
Secretary-Treasurer: Agnes Helgesson (Mrs. Leslie A.), 26925 St. Francis Dr., Los Altos Hills, Calif. 94022  
Chairman, Board of Directors: Bettylou Scandling, 35 Sutton Pl., New York, N.Y. 10022  
Chairman, Sterling Staff Concert Series: Claudette Sorel, 333 West End Ave., New York, N.Y. 10023  
Other directors: Janet A. Wilkie, Lois A. Gordon, Beth K. Shafe.  
Honorary Board of Directors: William Bergsma, Mrs. Anthony A. Bliss, Gene Bruck, John Brownlee, Paul Creston, Howard Hanson, Walter Hendl, William Maxwell Hitzig, Mrs. Lytle Hull, Mme. Olga Koussevitzky, Joseph E. Maddy, Robert Marvel, Mrs. Kathryn Sterling Maish, Peter Mennin, Herman Neuman, Mrs. Elizabeth Sterling Pierle, Gyorgy Sandor, William Schuman, Gideon Waldrop.

## DISTRICT DIRECTORS

### District

- 1—Theresa Wagenknecht (Mrs. R. E.), 9 Colonial Village Dr., Apt. 10, Arlington, Mass. 02174.  
*Beta, Phi Upsilon, Epsilon Psi, Alpha Beta, Boston, Connecticut Valley, New York.*
- 2—Vera Neely Ross (Mrs. W. Arthur), 4628 Brandywine St., NW, Washington, D.C. 20016.  
*Phi Gamma, Phi Psi, Alpha Zeta, Alpha Eta, Baltimore, Philadelphia, Washington, D.C.*
- 3—Mary Jane Harvey, 215 Lebanon Ave., Pittsburgh, Pa. 15228.  
*Psi, Mu Upsilon, Phi Omega, Epsilon Nu, Epsilon Upsilon, Alpha T beta, Lewisburg, Pittsburgh Rochester.*
- 4—Alice Patterson Jerabek (Mrs. Paul), 3000 Haddon Rd., Euclid, Cleveland, Ohio 44117  
*Phi, Mu Phi, Phi Omicron, Alliance, Cleveland, Cleveland Heights.*
- 5—Camilla Ayers, 634 Neff Rd., Grosse Pointe, Mich. 48236.  
*Gamma, Epsilon, Phi Kappa, Epsilon Lambda, Ann Arbor, Detroit, Toledo.*
- 6—Willena Schlueter (Mrs. Donald E.), 2022 Arrowood Pl., Cincinnati, Ohio 45231.  
*Mu Pi, Alpha Alpha, Cincinnati, Columbus, Dayton.*
- 7—Melva Crain (Mrs. W. M.), 3524 E. 10th St., Indianapolis, Ind. 46201.  
*Zeta, Kappa, Epsilon Omicron, Bloomington, Evansville, Indianapolis.*
- 8—Pauline Kaschins, 10920 S. Ridgeland Ave., Worth, Ill. 60482.  
*Sigma, Mu Xi, Phi Sigma, Epsilon Xi, Alpha Omicron, Central Chicago, Chicago, Evanston-North Shore, Milwaukee, Urbana-Champaign.*
- 9—Marian Davidson, 306 W. Parkway, Columbia, Mo. 65201.  
*Phi Theta, Epsilon Kappa, Epsilon Tau, Columbia, St. Louis, St. Louis County.*
- 10—Virginia Shaw (Mrs. Earle H.), 5340 S. Fremont Ave., Minneapolis, Minn. 55419.  
*Mu Epsilon, Phi Iota, Fargo, Minneapolis, Richfield.*
- 11—Mardean Holveck (Mrs. F. C.), 1014 Maplewood Dr., N.E., Cedar Rapids, Iowa 52402.  
*Omega, Mu Alpha, Mu Gamma, Mu Tau Mu Psi, Phi Zeta, Cedar Rapids, Des Moines, Lincoln, Sioux City.*
- 12—Mariette Simpson, 926 Grand, Emporia, Kans. 66801.  
*Xi, Mu Mu, Phi Epsilon, Alpha Kappa, Alpha Mu, Kansas City, Kansas City Evening.*
- 13—Martha Barkema, 919 S. 8th, Waco, Tex. 76706.  
*Mu T beta, Mu Chi, Phi Xi, Alpha Pi, Alpha Omega, Dallas, Austin.*
- 14—Judith Haddon, 4810 Danberry, Wichita Falls, Tex. 76308.  
*Phi Tau, Epsilon Epsilon, Epsilon Pi, Alpha Iota, Alpha Nu, Alpha Sigma, Albuquerque, Fort Worth, Wichita Falls.*
- 15—Ilah Dixon, Rt. 7, Box 423, Springfield, Mo. 65802.  
*Mu Kappa, Mu Rho, Phi Pi, Epsilon Phi, Alpha Rho, Alpha Chi, Denver, Oklahoma City, Tulsa, Wichita.*
- 16—Jean Stevens (Mrs. H. K.), W. 508 Clover, Cheney, Wash. 99004.  
*Mu Beta, Mu Zeta, Epsilon Iota, Epsilon Rho, Alpha Psi, Spokane.* (continued)

- 17—Eilene French Risegari (Mrs. S.) 4102 37th N.E., Seattle, Wash. 98105.  
*Tau Epsilon Sigma, Alpha Psi, Seattle, Tacoma.*
- 18—Doris George Hale (Mrs. Paul), 1286 Hillendale Dr. SE, Salem, Ore. 97302.  
*Nu, Phi Lambda, Epsilon Delta, Epsilon Theta, Alpha Lambda, Alpha Phi, Eugene, Portland, Salem.*
- 19—Roberta O'Connell (Mrs. J. F.), 1097 Arnott Way, Campbell, Calif. 95008.  
*Mu Eta, Phi Mu, Phi Chi, Epsilon Mu, Epsilon Omega, Alpha Delta, Alpha Epsilon, Berkeley, Fresno, Palo Alto, Sacramento, Salt Lake City, San Francisco, San Jose, Stockton.*
- 20—Sue Jones Campbell (Mrs. Bruce), 1416 Linda Vista Dr., Whittier, Calif. 90602.  
*Mu Nu, Phi Nu, Epsilon Eta, Beta Alpha, Beverly Hills, Fullerton, Long Beach, Los Angeles, Palos Verdes Peninsula, Pasadena, Riverside, San Diego, San Fernando Valley.*
- 21—Helen Avery (Mrs. Harold), 336 Emerson Dr., Hattiesburg, Miss. 39401.  
*Epsilon Gamma, Epsilon Zeta, Alpha Gamma, Jackson, New Orleans.*
- 22—Georgie Lee Fitz Stutsman, 808 Catalina Pl., Coral Gables, Fla. 33134.  
*Mu, Alpha Xi, Alpha Upsilon, Beta Beta, Atlanta, Miami, St. Petersburg.*

### NATIONAL CHAIRMEN

- Finance:** Eleanor Hale Wilson (Mrs. P. Raymond), 2800 39th Ave. W., Seattle, Wash. 98199
- Assistant Finance:** Beth Kalmbach Shafe (Mrs. Fred J.), 14811 Ashton Blvd., Detroit, Mich. 48223
- Magazine Subscription Agency:**  
Dorothy Niles McNeil (Mrs. Tom E.), 4132 Vesta Dr., Wichita, Kan. 67208.
- Friendship Corner:**  
**Orders:** Ruth Stephenson (Mrs. Walter), 2424 Bradfield Dr., Lincoln, Neb. 68502  
**Accounts:** Irene Barber (Mrs. D. G.), 1900 F St., Apt. B7, Lincoln, Neb. 68510
- Marie Morrissey Keith Scholarship Award and Elizabeth Mathias Honor Award:**  
Virginia C. Jarvis (Mrs. George B.), R.R. 17, Box 500, Indianapolis, Ind. 46254
- Mu Phi Epsilon Artist Members:**  
Dorothy Barr Lemen (Mrs. M. F.), 21 Claremont Ave., New York, N.Y. 10027
- Mu Phi Epsilon School of Music at Gads Hill Center:**  
**Director:** Winifrid Erickson, 6620 N. Oshkosh Ave., Chicago, Ill. 60631  
**Treasurer:** Alma E. Grambauer, 1380 Henry St., Des Plaines, Ill.  
**Representative on Settlement Board:** Charlotte Johnson, 2622 Lincolnwood Dr., Evanston, Ill. 60201
- Music Librarian:** Esther Wiedower, 2913 Swan Pl., Los Angeles, California 90026
- Music Therapy:** Dorothy Brin Crocker, 7506 Midbury, Dallas, Tex. 75230
- Ritual:** Pauline James Baker (Mrs. Paul W.), 4605 Lindell Blvd., St. Louis, Mo. 63108
- Sterling-Mathias Scholarships at Interlochen:** Janice Clark, 1000 Huron, Ann Arbor, Mich. 48604
- Editor "Metronome," Alumnae Newsletter:**  
Gertrude Otto, 120 W. 70 St., New York, N.Y. 10023
- Editor "Opus," Collegiate Newsletter:** Bea Kirkham (Mrs. John E.), 711 Prairie Park Rd., Wichita, Kans. 67218
- National Convention 1966:** Lillian Pettibone, 2034 N.E. 37th Ave., Portland, Ore. 97212

### PROFESSIONAL PANHELLENIC ASSOCIATION

- President:** Mrs. Roxine B. Petzold, *Delta Omicron*, R.F.D. 2, Newark Valley, N.Y. 13811.
- Secretary:** Mrs. Ordry P. Ray, *Phi Chi Theta*, 1945 Lebanon Dr., NE., Atlanta, Ga. 30324.
- Standing Committee Chairmen:**  
**City Area Panhellenic:** Virginia Porter Fiser (Mrs. Van E.), *Mu Phi Epsilon*, 1139 N. Ridgewood Dr., Wichita, Kan. 67208  
**Publicity:** Ruth Morgan (Mrs. Charles G.), *Mu Phi Epsilon*, Apt. 514B, 4000 Cathedral Ave., Washington, D.C. 20016

### ANNUAL SCHOLARSHIPS AND GIFTS

- |  |   |
|--|---|
| Edward MacDowell Association                     | Neighborhood Music School, Los Angeles, Calif.  |
| National Music Camp, Interlochen, Mich.          | Community Music School, Inc., St. Louis, Mo.    |
| Aspen Festival and School, Aspen, Colo.          | Brevard Music Center, N.C.                      |
| Music Academy of the West, Santa Barbara, Calif. | Detroit Music Settlement School, Detroit, Mich. |

### NATIONAL AFFILIATIONS

- |   |  |
|---|--|
| National Federation of Music Clubs          | National Ass'n for American Composers and Conductors |
| Music Teachers National Association         | National Music Council                               |
| Music Educators National Conference         | National Ass'n for Music Therapy                     |
| National Association of Schools of Music    | National Guild of Community Music Schools            |
| Professional Panhellenic Association        |  |
| National Council on the Arts and Government |  |

*Help the Memorial Foundation*

*buy from Friendship Corner*

*Help Gads Hill MΦE School of Music*

*buy Magazine Subscriptions*

IMPORTANT! To meet Post Office bulk-mail requirements for non-profit organizations, N.E.O. must change nameplates of all subscribers to include ZIP CODES. Please be sure to report your Zip Code to your Corresponding Secretary. If you are unaffiliated, please send your name, address AND ZIP CODE number to N.E.O. immediately.

### CHANGE OF ADDRESS

(please print)

Maiden Name (in full) .....

Married Name .....

Chapter of initiation .....  
(and date, if possible)

Old Address .....

New Address .....

Add ZIP CODE ..... (Imperative)

Present Chapter of affiliation .....

THE TRIANGLE OF MU PHI EPSILON / SEPTEMBER, 1965

59





ALPHA RHO—Phillips University, Enid, Okla. Marylind Jane Troska.  
 ALPHA SIGMA—Abilene Christian College, Abilene, Texas. Linda Adrian.  
 ALPHA CHI—Southwestern College, Winfield, Kansas. Carol Ann Wallingford.  
 ALPHA OMEGA—Stephen F. Austin State College, Nacogdoches, Texas. Mary Nell Lackman.  
*Alumnae:*  
 AUSTIN—Lillian Curran, 606 Fairfield Lane, Austin, Texas.  
 DALLAS—Cynthia Wadley (Mrs. D.), 9131 Larchwood, Dallas, Texas. 75238.  
 DENVER—Meredith Dalebout (Mrs. G. H.), 6290 S. Uinta St., Englewood, Colo. 80030

### PACIFIC NORTHWEST PROVINCE

*Collegiate:*  
 NU—University of Oregon, Eugene, Oregon. Marlyn Potampa.  
 TAU—University of Washington, Seattle 5, Washington. Janet Elaine Lavers.  
 MU BETA—Washington State University, Pullman, Washington. Margaret Claire Dezell.  
 MU ZETA—Whitman College, Walla Walla, Washington. Elizabeth Dawson.  
 PHI LAMBDA—Willamette University, Salem, Oregon. Jane Bonnington.  
 EPSILON DELTA—Lewis and Clark College, Portland, Oregon. Cheryl Rose Droege.  
 EPSILON THETA—Linfield College, McMinnville, Oregon. Mildred Ann Johnson.  
 EPSILON IOTA—Eastern Washington College of Education, Cheney, Washington. Judy Powell.  
 EPSILON RHO—Montana State University, Missoula, Montana. Mary Ellen Dasenbrock.  
 EPSILON SIGMA—Pacific Lutheran University, Parkland, Washington. Kathryn Ann Czychold.

### PACIFIC SOUTHWEST PROVINCE

*Collegiate:*  
 MU ETA—University of the Pacific, Stockton, Calif. Louise Abbott Longley.  
 MU NU—University of Southern California, Los Angeles, Calif. Jeri Brown.  
 PHI MU—San Jose State College, San Jose, Calif. Kathryn Schenk.  
 PHI NU—University of California at Los Angeles, Los Angeles, Calif. Michele Meyers Slavich.  
 PHI CHI—Fresno State College, Fresno, Calif. Carol Oaks.  
 EPSILON ETA—George Pepperdine College, Los Angeles, Calif. Jean Lowry Ward.  
 EPSILON OMEGA—San Francisco State College, San Francisco, Calif. Chaumonde Saladin.  
 ALPHA DELTA—Sacramento State College, Sacramento, Calif. Kaye Frye.  
 ALPHA EPSILON—College of the Holy Names, Oakland, Calif. Diane Louise Petersen.  
 BETA ALPHA—California State College at Fullerton, Calif. Catherine Inglis.  
*Alumnae:*  
 ALBUQUERQUE—Darlene Maher Evers (Mrs. J. J.), 6232 Hannett N.E., Albuquerque, N.M.  
 BERKELEY—Carolyn Farmer (Mrs. E. S.), 5240 Tehama Ave., Richmond Annex, Calif.  
 BEVERLY HILLS—Gloria Franzen (Mrs. Orvil), 855 S. Windsor Blvd., Los Angeles, Calif.  
 FRESNO—Ardelle Bakkegard (Mrs. Ben), 5710 N. Flora, Fresno, Calif.

FORT WORTH—Jeanette Stearns Keim (Mrs. Arthur R.), 1324 Washington, Ft. Worth, Texas.  
 OKLAHOMA CITY—Jennie Means Cleaver (Mrs. W. R.), 2709 N.W. 56, Oklahoma City, Okla. 73112.  
 SALT LAKE CITY—Joyce Trowbridge Benard, (Mrs. Lee), 92 West Center, Bountiful, Utah.  
 TULSA—Joann Carlson (Mrs. J. H.), 5415 E. 39th St., Tulsa, Okla.  
 WICHITA—Lois B. Hubbard (Mrs. Max), 1010 Emerson, Wichita, Kansas.  
 WICHITA FALLS—Margaret Crosslin (Mrs. Harold), 1310 Fillmore, Wichita Falls, Texas.

ALPHA LAMBDA—Portland State College, Portland, Oregon. Katherine Fischer George.  
 ALPHA PHI—Marylhurst College, Marylhurst, Oregon. Catherine Rice.  
 ALPHA PSI—Whitworth College, Spokane, Wash. Mary Ann Maddux.  
*Alumnae:*  
 EUGENE—Marjorie Carlson Ogle (Mrs. R. E.), 192 Fetlock Ct., Eugene, Ore.  
 PORTLAND—Jean Crites Compton (Mrs. David R.), 6445 S.W. Park Hill Way, Portland, Ore. 97201  
 SALEM—Ruth Campbell Geist (Mrs. Melvin), Rt. #1, Orchard Heights Rd. N.W., Salem, Ore.  
 SEATTLE—Beatrice Kauffman Higman, (Mrs. L. J.), 8621 41st Ave. S.W., Seattle, Wash. 98116  
 SPOKANE—Lois Thomas Iller (Mrs. Robt.), E. 9404 Nixon, Spokane, Wash.  
 TACOMA—Margaret Tubbs Barton (Mrs. William), 1436 N. Winnifred, Tacoma, Wash.

FULLERTON—Ann Gibbons Stout (Mrs. Clifton), 2513 Hartford Ave., Fullerton, Calif.  
 LONG BEACH—June L. Sams (Mrs. Cecil J.), 4248 Keever Ave., Long Beach, Calif. 90807  
 LOS ANGELES—Helen Conaway Wiedel (Mrs. Arthur J.), 10702 8th Pl., Inglewood, Calif. 90303  
 PALO ALTO—Jane Kanzler Lancefield (Mrs. R. L.), 41546 Chadbourne Dr., Fremont, Calif.  
 PALOS VERDES PENINSULA—Neeltje Gingerich, 5025 Carmen St., Torrance, Calif. 90503  
 PASADENA—Ruth Mellon McCall, 1265 N. Holliston Ave., Pasadena, Calif.  
 RIVERSIDE—Sylvia Newton Shepherd (Mrs. R. Ernest), 271 Barrett Rd., Riverside, Calif. 92507.  
 SACRAMENTO—Jean Torvend Kopf (Mrs. Robt.), 3181 Mountain View, Sacramento, Calif. 95821  
 SAN DIEGO—Maxine Roche Harlow (Mrs. Neal), 1351 Cary Way, San Diego, Calif. 92109  
 SAN FERNANDO VALLEY—Eva Marie Moritz Lanning (Mrs. Edgar), 3749 Limestone Pl., Sherman Oaks, Calif.  
 SAN FRANCISCO—Eleanor Knuth (Mrs.), 660 Corbett Ave., San Francisco, Calif.  
 SAN JOSE—Ina Mae S. Holt (Mrs. F. E.), 2256 Sunny Vista Dr., San Jose, Calif. 95128  
 STOCKTON—Frieda Boyer Morgan (Mrs. Frederick), 1040 Vernal Way, Stockton, Calif.

# 1965-66 Collegiate Chapter Calendar

N.E.O. Address: 1139 N. Ridgewood Dr., Wichita, Kansas 67208  
 National Editor Address: 220 Greenstone Dr., Reno, Nevada 89503

## SEPTEMBER—OCTOBER 1965

Order supplies replacements Form #3.  
 Return Fall Report of changes of officers, addresses and members.  
 Urge magazine subscriptions.

## MAY 1

*Due from Vice-President and Treasurer:* Initiates' record sheets etc. for spring initiation to N.E.O.  
*Due from Faculty Adviser:* Chapter grade averages M.M.K. Award and E.M. Honor Award to National Chairman. Use form.  
*Chapter:* Select outstanding senior. Send name to Province Governor. Use form. Plan suitable presentation of Senior Achievement Award check.  
*Due May 15:* President's report of chapter activities.  
*Due May 15:* Deadline for sending entries for Musicological Research Contest to National 6th Vice President.  
*Due from Treasurer:* Before May 31, send chapter contributions for National philanthropies to MU PHI EPSILON Memorial Foundation Treasurer.  
*Due from Magazine Chairman:* Before May 31, send final magazine renewals and subscriptions to National Chairman.

## NOVEMBER 13

FOUNDERS DAY. Special observance.  
 Send voluntary contributions (62¢ per member) to N.E.O. Form #3.  
 Urge magazine subscriptions.

## DECEMBER 1

*Deadline:* National taxes due N.E.O. Send check and 2 copies Form #2 (National Tax Payment) and send check for TRIANGLE subscriptions, Form #1.  
*Dec. 15:* President's report of chapter activities and plans.  
 Set Work Party date with District Director.  
 Remind: Musicological Research Contest.

## JANUARY—FEBRUARY 1966

*First month of second semester, or no later than Feb. 28, 1966:*  
 Election of new officers and Convention delegate and alternate.  
 Work Party with installation of new officers, supervision of District Director.  
*Due from Corresp. Sec'y:* new officers list to N.E.O. on required forms, 10 copies.  
 Also names of delegate and alternate.

**TRIANGLE:** Historians send material to National Editor, address, top of page.  
*Deadlines:*  
 September 10 for December issue  
 November 1 for February issue  
 February 1 for May issue  
 June 15 for September issue  
 OPUS material is sent to Opus Editor, listed under National Chairmen.

## 38th National Convention—Portland, Oregon August 28-September 1, 1966 Sheraton Motor Inn

Send change of name and/or address to N.E.O. immediately. Use form, page 59.  
 Be sure to include ZIP CODE

# 1965-66 Alumnae Chapter Calendar

N.E.O. Address: 1139 N. Ridgewood Dr., Wichita, Kansas 67208  
 National Editor Address: 220 Greenstone Dr., Reno, Nevada 89503

## SEPTEMBER—OCTOBER 1965

Order supplies for year, Form #3.  
 Return Fall Report of changes of officers, addresses and members.  
 Urge magazine subscriptions.

## NOVEMBER 13

FOUNDERS DAY. Special observance. Send voluntary contributions (62¢ per member) to N.E.O. Form #3.  
 Urge magazine subscriptions.

## DECEMBER 15

*Due:* President's report of chapter activities and plans.  
 Remind: Musicological Research Contest.

## JANUARY—FEBRUARY 1966

*Deadline:* January 15, National taxes due N.E.O.  
 Renew TRIANGLE subscriptions on same form.  
 February: election of new officers.  
 Election of Convention delegate and alternate.

## MARCH 1

*Deadline:* Return to N.E.O. new officers list, 10 copies, use forms. Also report Convention delegate and alternate.

## SUBSCRIBE MAGAZINES

## MAY

*Due May 15:* President's report of chapter activities.  
*Due May 15:* Deadline for sending entries for Musicological Research Contest to National 6th Vice President.  
*Due from Treasurer:* Before May 31, send chapter contributions for National philanthropies to MU PHI EPSILON Memorial Foundation Treasurer.  
*Due from Magazine Chairman:* Before May 31, send final magazine renewals and subscriptions to National Chairman.

**TRIANGLE:** Historians send material to National Editor, address, top of page.

### *Deadlines:*

September 10 for December issue  
 November 1 for February issue  
 February 1 for May issue  
 June 15 for September issue

METRONOME material is sent to Metro-  
 nome Editor, listed under National Chair-  
 men.

## SUPPORT FRIENDSHIP CORNER

## CONTRIBUTE TO M Φ E MEMORIAL FOUNDATION

**38th National Convention—Portland, Oregon**  
**August 28-September 1, 1966**  
**Sheraton Motor Inn**

Send change of name and/or address  
 to N.E.O. immediately. Use form, page 59.  
 Be sure to include ZIP CODE

# Triumph of the Jewelers Art

**YOUR BADGE —  
 a triumph of skilled  
 and highly trained  
 Balfour craftsmen  
 is a steadfast and  
 dynamic symbol in  
 a changing world.**



**WEAR YOUR PIN WITH PRIDE AS  
 IT REFLECTS THE RICH TRADITIONS  
 OF YOUR SORORITY LIFE**

Recognition pin, 10K Gold .....	\$ 2.00
Pledge pin, sterling silver .....	1.00
Plain badge, flat lyre .....	6.00
Plain badge, raised lyre .....	7.25
Close set pearl badge, raised lyre .....	14.25
Crown set pearl badge, raised lyre .....	20.00

Any State or City Taxes in addition to prices quoted.  
 Insignia listed above is carried in stock for immediate  
 shipment. Badges are carried in stock in yellow gold.

**Write for complete insignia price list**  
**OFFICIAL JEWELER TO MU PHI EPSILON**



*L.G. Balfour Company*  
 ATTLEBORO MASSACHUSETTS

IN CANADA L. G. BALFOUR COMPANY, LTD. MONTREAL AND TORONTO

Mrs. Van Fiser  
1139 North Ridgewood Drive  
Wichita, Kansas 67208  
RETURN POSTAGE  
GUARANTEED



1903 Mu Phi Epsilon 1963-4